



# Full wwPDB X-ray Structure Validation Report ⓘ

May 16, 2020 – 04:21 pm BST

PDB ID : 3OMQ  
Title : Fragment-Based Design of novel Estrogen Receptor Ligands  
Authors : Moecklinghoff, S.; van Otterlo, W.A.; Rose, R.; Fuchs, S.; Dominguez Seoane, M.; Waldmann, H.; Ottmann, C.; Brunsveld, L.  
Deposited on : 2010-08-27  
Resolution : 1.97 Å(reported)

This is a Full wwPDB X-ray Structure Validation Report for a publicly released PDB entry.

We welcome your comments at [validation@mail.wwpdb.org](mailto:validation@mail.wwpdb.org)

A user guide is available at

<https://www.wwpdb.org/validation/2017/XrayValidationReportHelp>

with specific help available everywhere you see the ⓘ symbol.

---

The following versions of software and data (see [references ⓘ](#)) were used in the production of this report:

MolProbity : 4.02b-467  
Mogul : 1.8.5 (274361), CSD as541be (2020)  
Xtriage (Phenix) : 1.13  
EDS : 2.11  
buster-report : 1.1.7 (2018)  
Percentile statistics : 20191225.v01 (using entries in the PDB archive December 25th 2019)  
Refmac : 5.8.0158  
CCP4 : 7.0.044 (Gargrove)  
Ideal geometry (proteins) : Engh & Huber (2001)  
Ideal geometry (DNA, RNA) : Parkinson et al. (1996)  
Validation Pipeline (wwPDB-VP) : 2.11

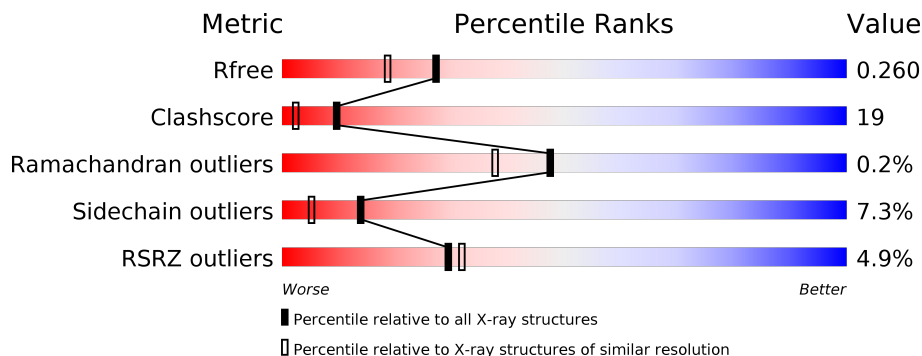
# 1 Overall quality at a glance

The following experimental techniques were used to determine the structure:

*X-RAY DIFFRACTION*

The reported resolution of this entry is 1.97 Å.

Percentile scores (ranging between 0-100) for global validation metrics of the entry are shown in the following graphic. The table shows the number of entries on which the scores are based.



Metric	Whole archive (#Entries)	Similar resolution (#Entries, resolution range(Å))
$R_{free}$	130704	11647 (2.00-1.96)
Clashscore	141614	1014 (1.98-1.98)
Ramachandran outliers	138981	1006 (1.98-1.98)
Sidechain outliers	138945	1006 (1.98-1.98)
RSRZ outliers	127900	11410 (2.00-1.96)

The table below summarises the geometric issues observed across the polymeric chains and their fit to the electron density. The red, orange, yellow and green segments on the lower bar indicate the fraction of residues that contain outliers for  $\geq 3$ , 2, 1 and 0 types of geometric quality criteria respectively. A grey segment represents the fraction of residues that are not modelled. The numeric value for each fraction is indicated below the corresponding segment, with a dot representing fractions  $\leq 5\%$ . The upper red bar (where present) indicates the fraction of residues that have poor fit to the electron density. The numeric value is given above the bar.

Mol	Chain	Length	Quality of chain
1	A	240	 5% 68% 22% 5% 5%
1	B	240	 5% 65% 25% 7% 7%
2	C	19	 21% 26% 5% 47%
2	D	19	 32% 16% 5% 47%

## 2 Entry composition [i](#)

There are 4 unique types of molecules in this entry. The entry contains 4132 atoms, of which 0 are hydrogens and 0 are deuteriums.

In the tables below, the ZeroOcc column contains the number of atoms modelled with zero occupancy, the AltConf column contains the number of residues with at least one atom in alternate conformation and the Trace column contains the number of residues modelled with at most 2 atoms.

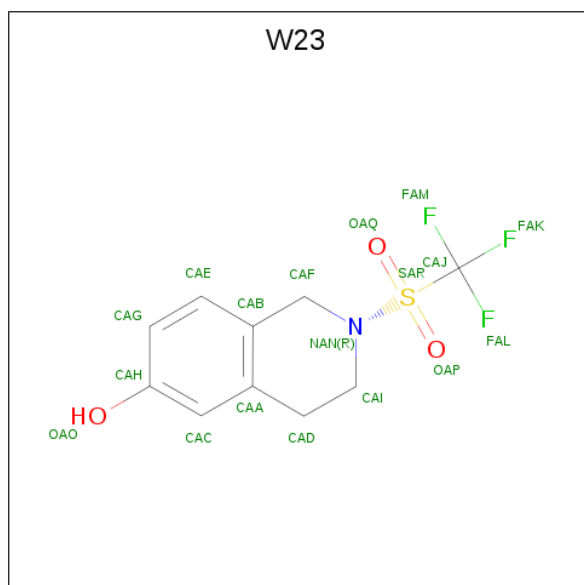
- Molecule 1 is a protein called Estrogen receptor beta.

Mol	Chain	Residues	Atoms					ZeroOcc	AltConf	Trace
			Total	C	N	O	S			
1	A	229	Total 1821	C 1171	N 304	O 326	S 20	0	2	0
1	B	224	Total 1766	C 1141	N 293	O 312	S 20	0	0	0

- Molecule 2 is a protein called Nuclear receptor coactivator 1.

Mol	Chain	Residues	Atoms				ZeroOcc	AltConf	Trace
			Total	C	N	O			
2	C	10	Total 88	C 56	N 21	O 11	0	0	0
2	D	10	Total 88	C 56	N 21	O 11	0	0	0

- Molecule 3 is 2-[(trifluoromethyl)sulfonyl]-1,2,3,4-tetrahydroisoquinolin-6-ol (three-letter code: W23) (formula: C<sub>10</sub>H<sub>10</sub>F<sub>3</sub>NO<sub>3</sub>S).



Mol	Chain	Residues	Atoms					ZeroOcc	AltConf	
3	A	1	Total	C	F	N	O	S	0	0
			18	10	3	1	3	1		
3	B	1	Total	C	F	N	O	S	0	0
			18	10	3	1	3	1		

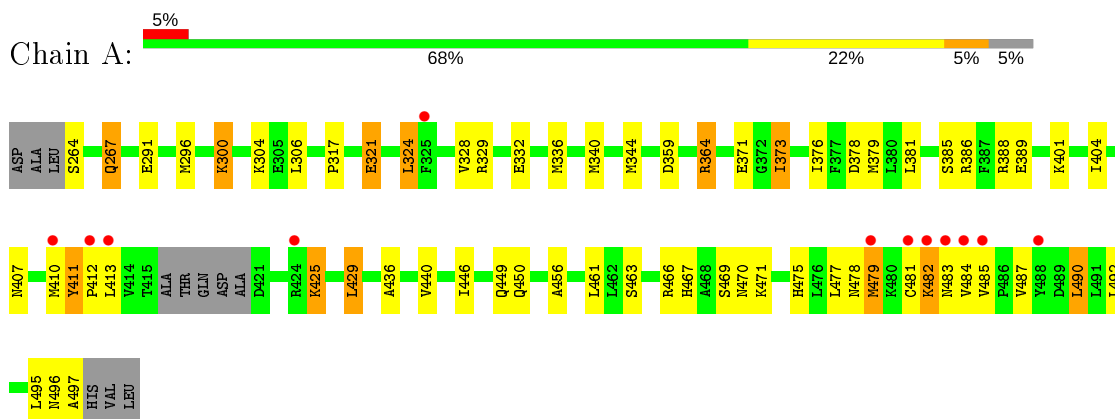
- Molecule 4 is water.

Mol	Chain	Residues	Atoms		ZeroOcc	AltConf
4	A	164	Total	O	0	0
			164	164		
4	B	161	Total	O	0	0
			161	161		
4	C	5	Total	O	0	0
			5	5		
4	D	3	Total	O	0	0
			3	3		

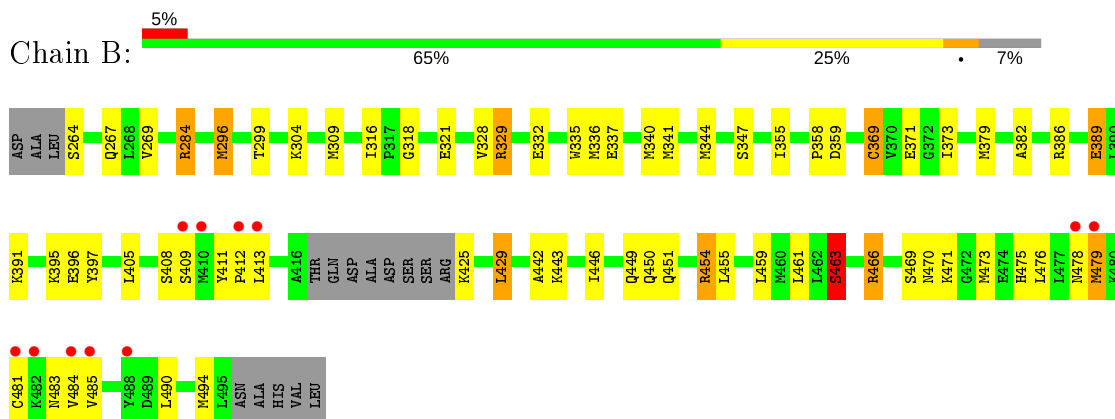
### 3 Residue-property plots [i](#)

These plots are drawn for all protein, RNA and DNA chains in the entry. The first graphic for a chain summarises the proportions of the various outlier classes displayed in the second graphic. The second graphic shows the sequence view annotated by issues in geometry and electron density. Residues are color-coded according to the number of geometric quality criteria for which they contain at least one outlier: green = 0, yellow = 1, orange = 2 and red = 3 or more. A red dot above a residue indicates a poor fit to the electron density ( $RSRZ > 2$ ). Stretches of 2 or more consecutive residues without any outlier are shown as a green connector. Residues present in the sample, but not in the model, are shown in grey.

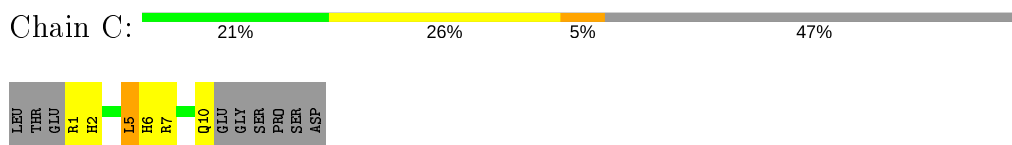
- Molecule 1: Estrogen receptor beta



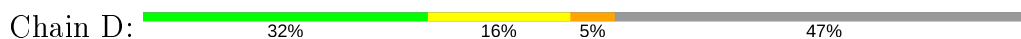
- Molecule 1: Estrogen receptor beta



- Molecule 2: Nuclear receptor coactivator 1



- Molecule 2: Nuclear receptor coactivator 1



LEU	THR	GLU	R1	R2	I5	H6	Q10	GLU	GLY	SER	PRO	SER	ASP
-----	-----	-----	----	----	----	----	-----	-----	-----	-----	-----	-----	-----

## 4 Data and refinement statistics

Property	Value	Source
Space group	P 31	Depositor
Cell constants a, b, c, $\alpha$ , $\beta$ , $\gamma$	70.59Å 70.59Å 110.09Å 90.00° 90.00° 120.00°	Depositor
Resolution (Å)	19.55 – 1.97 19.55 – 1.97	Depositor EDS
% Data completeness (in resolution range)	100.0 (19.55-1.97) 97.6 (19.55-1.97)	Depositor EDS
$R_{merge}$	0.05	Depositor
$R_{sym}$	(Not available)	Depositor
$\langle I/\sigma(I) \rangle$ <sup>1</sup>	1.81 (at 1.97Å)	Xtriage
Refinement program	REFMAC 5.5.0109	Depositor
R, $R_{free}$	0.205 , 0.260 0.205 , 0.260	Depositor DCC
$R_{free}$ test set	2114 reflections (5.00%)	wwPDB-VP
Wilson B-factor (Å <sup>2</sup> )	19.3	Xtriage
Anisotropy	0.053	Xtriage
Bulk solvent $k_{sol}$ (e/Å <sup>3</sup> ), $B_{sol}$ (Å <sup>2</sup> )	0.35 , 31.3	EDS
L-test for twinning <sup>2</sup>	$\langle  L  \rangle = 0.50$ , $\langle L^2 \rangle = 0.34$	Xtriage
Estimated twinning fraction	0.022 for -h,-k,l 0.480 for h,-h-k,-l 0.024 for -k,-h,-l	Xtriage
$F_o, F_c$ correlation	0.94	EDS
Total number of atoms	4132	wwPDB-VP
Average B, all atoms (Å <sup>2</sup> )	22.0	wwPDB-VP

Xtriage's analysis on translational NCS is as follows: *The largest off-origin peak in the Patterson function is 7.37% of the height of the origin peak. No significant pseudotranslation is detected.*

<sup>1</sup>Intensities estimated from amplitudes.

<sup>2</sup>Theoretical values of  $\langle |L| \rangle$ ,  $\langle L^2 \rangle$  for acentric reflections are 0.5, 0.333 respectively for untwinned datasets, and 0.375, 0.2 for perfectly twinned datasets.

## 5 Model quality i

### 5.1 Standard geometry i

Bond lengths and bond angles in the following residue types are not validated in this section: W23

The Z score for a bond length (or angle) is the number of standard deviations the observed value is removed from the expected value. A bond length (or angle) with  $|Z| > 5$  is considered an outlier worth inspection. RMSZ is the root-mean-square of all Z scores of the bond lengths (or angles).

Mol	Chain	Bond lengths		Bond angles	
		RMSZ	# $ Z  > 5$	RMSZ	# $ Z  > 5$
1	A	1.02	0/1854	1.01	4/2506 (0.2%)
1	B	1.06	4/1799 (0.2%)	1.09	5/2432 (0.2%)
2	C	0.87	0/89	1.00	0/118
2	D	0.80	0/89	1.07	0/118
All	All	1.03	4/3831 (0.1%)	1.05	9/5174 (0.2%)

All (4) bond length outliers are listed below:

Mol	Chain	Res	Type	Atoms	Z	Observed(Å)	Ideal(Å)
1	B	369	CYS	CB-SG	-6.43	1.71	1.82
1	B	463	SER	CB-OG	-5.75	1.34	1.42
1	B	284	ARG	CD-NE	-5.58	1.36	1.46
1	B	397	TYR	CD2-CE2	5.18	1.47	1.39

All (9) bond angle outliers are listed below:

Mol	Chain	Res	Type	Atoms	Z	Observed(°)	Ideal(°)
1	B	454	ARG	NE-CZ-NH2	-17.19	111.71	120.30
1	A	364	ARG	NE-CZ-NH1	15.30	127.95	120.30
1	B	284	ARG	NE-CZ-NH1	-14.90	112.85	120.30
1	B	284	ARG	NE-CZ-NH2	13.79	127.19	120.30
1	A	364	ARG	NE-CZ-NH2	-13.02	113.79	120.30
1	B	454	ARG	NE-CZ-NH1	12.04	126.32	120.30
1	A	479	MET	CB-CG-SD	5.91	130.12	112.40
1	B	479	MET	CB-CG-SD	5.83	129.88	112.40
1	A	388	ARG	NE-CZ-NH2	-5.39	117.60	120.30

There are no chirality outliers.

There are no planarity outliers.



## 5.2 Too-close contacts

In the following table, the Non-H and H(model) columns list the number of non-hydrogen atoms and hydrogen atoms in the chain respectively. The H(added) column lists the number of hydrogen atoms added and optimized by MolProbity. The Clashes column lists the number of clashes within the asymmetric unit, whereas Symm-Clashes lists symmetry related clashes.

Mol	Chain	Non-H	H(model)	H(added)	Clashes	Symm-Clashes
1	A	1821	0	1889	80	0
1	B	1766	0	1843	75	0
2	C	88	0	96	8	0
2	D	88	0	96	5	0
3	A	18	0	10	0	0
3	B	18	0	9	0	0
4	A	164	0	0	9	0
4	B	161	0	0	15	0
4	C	5	0	0	0	0
4	D	3	0	0	0	0
All	All	4132	0	3943	150	0

The all-atom clashscore is defined as the number of clashes found per 1000 atoms (including hydrogen atoms). The all-atom clashscore for this structure is 19.

All (150) close contacts within the same asymmetric unit are listed below, sorted by their clash magnitude.

Atom-1	Atom-2	Interatomic distance (Å)	Clash overlap (Å)
1:B:267:GLN:HB3	4:B:124:HOH:O	1.06	1.24
1:A:300:LYS:O	1:A:300:LYS:HE3	1.38	1.19
1:A:470:ASN:OD1	1:B:470:ASN:OD1	1.60	1.15
1:B:309:MET:SD	4:B:109:HOH:O	1.99	1.14
1:A:463:SER:O	1:B:466:ARG:NH1	1.81	1.13
1:B:425:LYS:N	4:B:177:HOH:O	1.83	1.11
1:A:336:MET:HG3	1:A:340:MET:HE2	1.35	1.07
1:A:296:MET:HG3	4:A:31:HOH:O	1.54	1.05
1:A:336:MET:HG3	1:A:340:MET:CE	1.86	1.05
1:A:340:MET:HE1	1:A:469:SER:HA	1.06	1.03
1:A:470:ASN:HB3	4:A:540:HOH:O	1.58	1.01
1:A:449:GLN:HG3	4:A:99:HOH:O	1.59	1.00
1:A:364:ARG:HD2	1:A:378:ASP:OD1	1.62	0.99
1:A:340:MET:HE1	1:A:469:SER:CA	1.92	0.99
1:A:332:GLU:OE2	2:C:2:HIS:CD2	2.14	0.99
1:A:329:ARG:NH1	1:A:410:MET:O	1.97	0.98
1:B:284:ARG:HD2	4:B:29:HOH:O	1.63	0.98

*Continued on next page...*

*Continued from previous page...*

Atom-1	Atom-2	Interatomic distance (Å)	Clash overlap (Å)
1:A:332:GLU:OE2	2:C:2:HIS:NE2	1.97	0.98
1:A:340:MET:CE	1:A:469:SER:HA	1.96	0.94
1:A:463:SER:C	1:B:466:ARG:HH12	1.69	0.93
1:A:482:LYS:HB3	1:A:484:VAL:HG23	1.52	0.92
1:A:264:SER:CB	1:A:267:GLN:HE22	1.83	0.92
1:B:332:GLU:OE2	2:D:2:HIS:CD2	2.23	0.91
1:B:409:SER:O	4:B:530:HOH:O	1.89	0.90
1:A:264:SER:HB3	1:A:267:GLN:HE22	1.37	0.89
1:A:264:SER:HB3	1:A:267:GLN:NE2	1.87	0.88
1:B:329:ARG:NH2	1:B:411:TYR:O	2.08	0.86
1:A:410:MET:O	1:A:411:TYR:O	1.93	0.86
1:A:329:ARG:NH2	1:A:410:MET:O	2.08	0.86
1:B:340:MET:CE	1:B:469:SER:HB2	2.05	0.86
1:A:329:ARG:CZ	1:A:410:MET:O	2.25	0.83
1:A:463:SER:C	1:B:466:ARG:NH1	2.30	0.81
1:B:332:GLU:OE2	2:D:2:HIS:NE2	2.14	0.81
4:A:540:HOH:O	1:B:470:ASN:HB3	1.82	0.80
1:B:296:MET:HE2	4:B:175:HOH:O	1.80	0.79
1:B:429:LEU:HG	4:B:515:HOH:O	1.82	0.79
1:B:408:SER:HB2	4:B:530:HOH:O	1.83	0.78
1:B:340:MET:HE1	1:B:469:SER:HA	1.64	0.78
1:B:329:ARG:HD3	1:B:413:LEU:HD11	1.64	0.78
1:A:300:LYS:HE3	1:A:300:LYS:C	2.06	0.75
1:A:385:SER:O	1:A:389:GLU:HG3	1.87	0.74
1:A:336:MET:HG3	1:A:340:MET:HE1	1.70	0.73
1:B:340:MET:HE3	1:B:469:SER:HB2	1.72	0.72
1:A:328:VAL:HG22	2:C:5:LEU:HD13	1.73	0.70
1:A:329:ARG:HD3	1:A:410:MET:SD	2.32	0.68
1:B:340:MET:CE	1:B:469:SER:HA	2.24	0.68
1:A:328:VAL:O	1:A:332:GLU:HG3	1.94	0.67
1:B:425:LYS:CA	4:B:177:HOH:O	2.34	0.67
1:A:304:LYS:CB	4:A:259:HOH:O	2.43	0.66
1:B:336:MET:HG3	1:B:340:MET:HE1	1.77	0.66
1:B:340:MET:HE1	1:B:469:SER:CA	2.24	0.66
1:B:328:VAL:HG22	2:D:5:LEU:HD13	1.77	0.66
1:B:340:MET:CE	1:B:469:SER:CA	2.73	0.66
1:A:306:LEU:HB3	1:A:490:LEU:HD13	1.77	0.66
1:B:466:ARG:HG2	1:B:466:ARG:HH11	1.60	0.65
1:B:304:LYS:CB	4:B:510:HOH:O	2.45	0.65
1:B:340:MET:CE	1:B:469:SER:CB	2.74	0.65
1:A:478:ASN:O	1:A:481:CYS:HB2	1.98	0.64

*Continued on next page...*

*Continued from previous page...*

Atom-1	Atom-2	Interatomic distance (Å)	Clash overlap (Å)
1:A:329:ARG:HD2	1:A:413:LEU:HD11	1.79	0.64
1:A:376:ILE:HA	1:A:379:MET:HE2	1.79	0.64
1:A:485:VAL:HG23	4:A:81:HOH:O	1.97	0.64
1:A:449:GLN:CG	4:A:99:HOH:O	2.27	0.63
1:B:340:MET:HE1	1:B:469:SER:HB2	1.81	0.62
1:A:264:SER:CB	1:A:267:GLN:NE2	2.52	0.61
1:A:450:GLN:NE2	4:A:99:HOH:O	2.33	0.61
1:B:340:MET:HE1	1:B:469:SER:CB	2.30	0.61
1:B:328:VAL:O	1:B:332:GLU:HG3	2.00	0.61
1:A:467:HIS:HB2	1:B:466:ARG:NH1	2.17	0.60
1:A:386:ARG:HG2	1:A:461:LEU:HD21	1.83	0.60
1:A:482:LYS:HB3	1:A:484:VAL:CG2	2.31	0.58
1:A:379:MET:HE1	1:A:471:LYS:HG3	1.85	0.58
1:A:364:ARG:HG3	1:A:381:LEU:HD12	1.86	0.58
1:A:470:ASN:ND2	4:A:225:HOH:O	2.37	0.57
1:B:328:VAL:HG21	2:D:6:HIS:CD2	2.39	0.57
1:A:340:MET:CE	1:A:469:SER:CA	2.70	0.57
1:A:379:MET:CE	1:A:471:LYS:HG3	2.34	0.57
1:A:300:LYS:O	1:A:300:LYS:CE	2.32	0.57
1:A:321:GLU:HA	1:A:321:GLU:OE2	2.05	0.57
1:B:329:ARG:NH2	1:B:411:TYR:N	2.52	0.57
1:B:264:SER:HB3	1:B:267:GLN:OE1	2.06	0.56
1:A:321:GLU:HB2	1:A:425:LYS:HE2	1.88	0.55
1:A:482:LYS:HD3	1:A:484:VAL:CG2	2.36	0.55
1:B:337:GLU:HA	1:B:340:MET:HE2	1.88	0.55
1:B:299:THR:HG22	1:B:476:LEU:HD11	1.87	0.55
1:A:467:HIS:HB2	1:B:466:ARG:HH11	1.71	0.55
2:D:6:HIS:O	2:D:10:GLN:HG3	2.07	0.55
1:B:386:ARG:NH1	1:B:389:GLU:OE1	2.36	0.55
1:A:482:LYS:NZ	1:A:484:VAL:HG22	2.22	0.54
2:C:1:ARG:HD3	2:C:2:HIS:CE1	2.41	0.54
1:B:340:MET:HE3	1:B:469:SER:CB	2.37	0.54
1:A:411:TYR:O	1:A:412:PRO:C	2.43	0.54
1:A:340:MET:HE3	1:A:469:SER:HB2	1.88	0.54
1:B:484:VAL:O	1:B:484:VAL:HG12	2.07	0.54
1:B:267:GLN:CB	4:B:124:HOH:O	1.92	0.53
1:B:341:MET:HA	1:B:344:MET:HE2	1.91	0.53
1:A:336:MET:O	1:A:340:MET:HE2	2.10	0.52
1:B:316:ILE:HD12	1:B:405:LEU:CD2	2.40	0.52
1:B:466:ARG:CD	4:B:87:HOH:O	2.58	0.51
1:B:386:ARG:HG3	1:B:461:LEU:HD11	1.92	0.51

*Continued on next page...*

*Continued from previous page...*

Atom-1	Atom-2	Interatomic distance (Å)	Clash overlap (Å)
1:B:309:MET:HE3	1:B:335:TRP:HA	1.92	0.51
1:B:309:MET:CE	1:B:335:TRP:HA	2.41	0.50
1:A:364:ARG:HG3	1:A:381:LEU:CD1	2.42	0.50
1:A:496:ASN:O	1:A:497:ALA:HB3	2.11	0.50
1:B:485:VAL:HG23	4:B:43:HOH:O	2.11	0.50
1:B:408:SER:CB	4:B:530:HOH:O	2.51	0.50
1:A:291:GLU:OE1	1:A:371[A]:GLU:HG2	2.12	0.49
1:A:482:LYS:CB	1:A:484:VAL:HG23	2.33	0.48
1:A:446:ILE:HD12	1:A:450:GLN:HB3	1.94	0.48
1:B:321:GLU:HG3	4:B:188:HOH:O	2.13	0.48
1:A:463:SER:HB3	1:B:466:ARG:CZ	2.44	0.47
1:B:379:MET:CE	1:B:471:LYS:HG3	2.44	0.47
1:A:496:ASN:O	1:A:497:ALA:CB	2.61	0.47
1:A:436:ALA:O	1:A:440:VAL:HG23	2.15	0.47
1:B:336:MET:HB2	1:B:473:MET:HE1	1.96	0.47
1:B:299:THR:CG2	1:B:476:LEU:HD11	2.44	0.47
1:B:347:SER:HA	1:B:355:ILE:HG12	1.96	0.47
1:B:490:LEU:O	1:B:494:MET:HG2	2.15	0.47
1:A:475:HIS:CE1	1:A:479:MET:SD	3.08	0.46
1:B:411:TYR:O	1:B:412:PRO:C	2.52	0.46
1:A:264:SER:OG	1:A:267:GLN:NE2	2.45	0.46
1:B:318:GLY:HA3	1:B:429:LEU:HD11	1.97	0.46
1:A:411:TYR:HB3	1:B:382:ALA:HB2	1.99	0.45
1:A:466:ARG:HH21	1:B:463:SER:HB3	1.81	0.44
1:B:475:HIS:CE1	1:B:479:MET:CG	3.00	0.44
1:B:340:MET:HE3	1:B:469:SER:CA	2.46	0.44
2:C:7:ARG:NH1	2:C:7:ARG:HG2	2.31	0.44
1:B:296:MET:HB3	1:B:296:MET:HE2	1.86	0.44
1:B:386:ARG:HG2	1:B:461:LEU:HD21	2.00	0.43
1:A:407:ASN:CG	1:A:407:ASN:O	2.57	0.43
1:B:371:GLU:HG3	1:B:371:GLU:O	2.18	0.43
1:B:446:ILE:HD12	1:B:450:GLN:HB3	2.01	0.43
1:A:401:LYS:HA	1:A:404:ILE:HD12	2.02	0.42
1:A:482:LYS:HZ3	1:A:484:VAL:HG22	1.83	0.42
1:B:396:GLU:OE2	1:B:454:ARG:HD3	2.19	0.42
1:A:482:LYS:HD3	1:A:484:VAL:HG21	2.00	0.42
1:A:456:ALA:HA	1:B:459:LEU:CD1	2.49	0.42
1:B:269:VAL:CG1	1:B:395:LYS:HG3	2.50	0.41
1:A:487:VAL:HG12	1:A:492:LEU:HB2	2.01	0.41
1:B:329:ARG:HH21	1:B:411:TYR:N	2.19	0.41
1:B:466:ARG:NH1	1:B:466:ARG:HG2	2.32	0.41

*Continued on next page...*

Continued from previous page...

Atom-1	Atom-2	Interatomic distance (Å)	Clash overlap (Å)
2:C:6:HIS:O	2:C:10:GLN:HG3	2.21	0.41
2:C:7:ARG:HH11	2:C:7:ARG:HG2	1.85	0.41
1:A:317:PRO:O	1:A:429:LEU:HD21	2.21	0.41
1:A:373:ILE:HG21	1:A:373:ILE:HD12	1.75	0.41
1:A:340:MET:O	1:A:344:MET:HG3	2.21	0.41
1:A:324:LEU:HD21	2:C:10:GLN:HE21	1.86	0.41
1:B:455:LEU:O	1:B:459:LEU:HG	2.21	0.41
1:A:340:MET:CE	1:A:469:SER:CB	2.99	0.41
1:A:410:MET:C	1:A:411:TYR:O	2.58	0.40
1:B:442:ALA:HA	1:B:451:GLN:OE1	2.21	0.40

There are no symmetry-related clashes.

## 5.3 Torsion angles [i](#)

### 5.3.1 Protein backbone [i](#)

In the following table, the Percentiles column shows the percent Ramachandran outliers of the chain as a percentile score with respect to all X-ray entries followed by that with respect to entries of similar resolution.

The Analysed column shows the number of residues for which the backbone conformation was analysed, and the total number of residues.

Mol	Chain	Analysed	Favoured	Allowed	Outliers	Percentiles	
1	A	227/240 (95%)	214 (94%)	12 (5%)	1 (0%)	34	22
1	B	220/240 (92%)	211 (96%)	9 (4%)	0	100	100
2	C	8/19 (42%)	7 (88%)	1 (12%)	0	100	100
2	D	8/19 (42%)	7 (88%)	1 (12%)	0	100	100
All	All	463/518 (89%)	439 (95%)	23 (5%)	1 (0%)	47	38

All (1) Ramachandran outliers are listed below:

Mol	Chain	Res	Type
1	A	411	TYR

### 5.3.2 Protein sidechains [i](#)

In the following table, the Percentiles column shows the percent sidechain outliers of the chain as a percentile score with respect to all X-ray entries followed by that with respect to entries of similar resolution.

The Analysed column shows the number of residues for which the sidechain conformation was analysed, and the total number of residues.

Mol	Chain	Analysed	Rotameric	Outliers	Percentiles	
1	A	208/215 (97%)	195 (94%)	13 (6%)	18	7
1	B	201/215 (94%)	185 (92%)	16 (8%)	12	3
2	C	9/18 (50%)	8 (89%)	1 (11%)	6	1
2	D	9/18 (50%)	8 (89%)	1 (11%)	6	1
All	All	427/466 (92%)	396 (93%)	31 (7%)	14	5

All (31) residues with a non-rotameric sidechain are listed below:

Mol	Chain	Res	Type
1	A	267	GLN
1	A	300	LYS
1	A	321	GLU
1	A	324	LEU
1	A	359	ASP
1	A	373	ILE
1	A	425	LYS
1	A	429	LEU
1	A	477	LEU
1	A	482	LYS
1	A	483	ASN
1	A	490	LEU
1	A	495	LEU
1	B	296	MET
1	B	329	ARG
1	B	358	PRO
1	B	359	ASP
1	B	369	CYS
1	B	373	ILE
1	B	389	GLU
1	B	391	LYS
1	B	429	LEU
1	B	443	LYS
1	B	449	GLN

*Continued on next page...*

*Continued from previous page...*

Mol	Chain	Res	Type
1	B	463	SER
1	B	466	ARG
1	B	478	ASN
1	B	481	CYS
1	B	483	ASN
2	C	5	LEU
2	D	5	LEU

Some sidechains can be flipped to improve hydrogen bonding and reduce clashes. All (5) such sidechains are listed below:

Mol	Chain	Res	Type
1	A	267	GLN
1	A	394	HIS
1	A	470	ASN
1	B	407	ASN
2	C	10	GLN

### 5.3.3 RNA [i](#)

There are no RNA molecules in this entry.

## 5.4 Non-standard residues in protein, DNA, RNA chains [i](#)

There are no non-standard protein/DNA/RNA residues in this entry.

## 5.5 Carbohydrates [i](#)

There are no carbohydrates in this entry.

## 5.6 Ligand geometry [i](#)

2 ligands are modelled in this entry.

In the following table, the Counts columns list the number of bonds (or angles) for which Mogul statistics could be retrieved, the number of bonds (or angles) that are observed in the model and the number of bonds (or angles) that are defined in the Chemical Component Dictionary. The Link column lists molecule types, if any, to which the group is linked. The Z score for a bond length (or angle) is the number of standard deviations the observed value is removed from the expected value. A bond length (or angle) with  $|Z| > 2$  is considered an outlier worth inspection. RMSZ is the root-mean-square of all Z scores of the bond lengths (or angles).

Mol	Type	Chain	Res	Link	Bond lengths			Bond angles		
					Counts	RMSZ	# Z  > 2	Counts	RMSZ	# Z  > 2
3	W23	B	1	-	19,19,19	2.65	8 (42%)	28,30,30	2.41	11 (39%)
3	W23	A	1	-	19,19,19	2.74	6 (31%)	28,30,30	2.38	9 (32%)

In the following table, the Chirals column lists the number of chiral outliers, the number of chiral centers analysed, the number of these observed in the model and the number defined in the Chemical Component Dictionary. Similar counts are reported in the Torsion and Rings columns. '-' means no outliers of that kind were identified.

Mol	Type	Chain	Res	Link	Chirals	Torsions	Rings
3	W23	B	1	-	-	0/15/24/24	0/2/2/2
3	W23	A	1	-	-	0/15/24/24	0/2/2/2

All (14) bond length outliers are listed below:

Mol	Chain	Res	Type	Atoms	Z	Observed(Å)	Ideal(Å)
3	B	1	W23	OAQ-SAR	6.79	1.51	1.42
3	A	1	W23	SAR-NAN	6.70	1.71	1.59
3	A	1	W23	OAP-SAR	5.98	1.50	1.42
3	B	1	W23	SAR-NAN	5.38	1.68	1.59
3	A	1	W23	OAQ-SAR	4.41	1.48	1.42
3	A	1	W23	CAJ-SAR	-3.76	1.74	1.83
3	B	1	W23	OAP-SAR	3.69	1.47	1.42
3	A	1	W23	CAD-CAA	3.63	1.57	1.51
3	B	1	W23	CAD-CAA	3.51	1.57	1.51
3	B	1	W23	CAJ-SAR	-2.92	1.76	1.83
3	A	1	W23	CAI-CAD	2.83	1.57	1.51
3	B	1	W23	CAI-CAD	2.30	1.56	1.51
3	B	1	W23	CAF-CAB	2.25	1.56	1.51
3	B	1	W23	CAF-NAN	2.06	1.50	1.47

All (20) bond angle outliers are listed below:

Mol	Chain	Res	Type	Atoms	Z	Observed(°)	Ideal(°)
3	A	1	W23	FAK-CAJ-SAR	-6.72	98.76	110.58
3	B	1	W23	FAK-CAJ-SAR	-6.41	99.32	110.58
3	A	1	W23	OAP-SAR-CAJ	5.77	113.28	104.35
3	B	1	W23	OAP-SAR-CAJ	5.41	112.73	104.35
3	B	1	W23	CAJ-SAR-NAN	4.22	109.88	104.65
3	A	1	W23	OAQ-SAR-OAP	-4.21	112.90	120.87
3	B	1	W23	OAQ-SAR-OAP	-3.66	113.93	120.87
3	A	1	W23	CAJ-SAR-NAN	3.65	109.17	104.65
3	B	1	W23	CAB-CAF-NAN	-3.56	105.23	110.58

*Continued on next page...*



*Continued from previous page...*

Mol	Chain	Res	Type	Atoms	Z	Observed(°)	Ideal(°)
3	A	1	W23	FAM-CAJ-SAR	-3.30	104.78	110.58
3	B	1	W23	FAL-CAJ-FAK	2.78	119.97	107.45
3	A	1	W23	FAL-CAJ-SAR	-2.75	105.74	110.58
3	A	1	W23	FAL-CAJ-FAK	2.71	119.66	107.45
3	A	1	W23	OAQ-SAR-CAJ	-2.70	100.17	104.35
3	B	1	W23	FAM-CAJ-SAR	-2.70	105.84	110.58
3	B	1	W23	OAP-SAR-NAN	-2.65	106.92	109.74
3	B	1	W23	CAH-CAC-CAA	-2.48	118.08	120.83
3	A	1	W23	CAB-CAF-NAN	-2.46	106.89	110.58
3	B	1	W23	CAE-CAB-CAA	2.20	121.68	118.98
3	B	1	W23	CAG-CAH-CAC	2.07	122.44	120.17

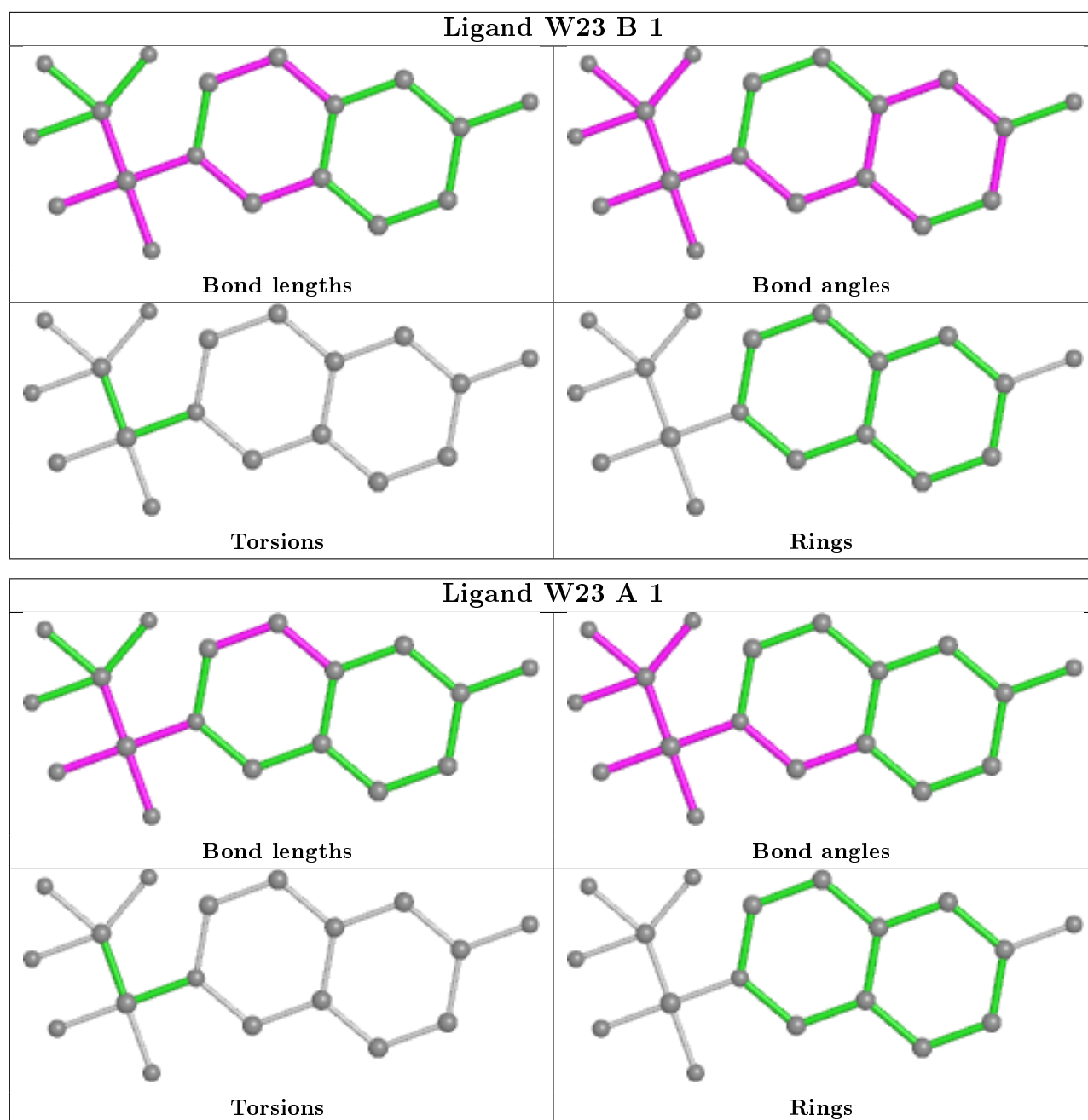
There are no chirality outliers.

There are no torsion outliers.

There are no ring outliers.

No monomer is involved in short contacts.

The following is a two-dimensional graphical depiction of Mogul quality analysis of bond lengths, bond angles, torsion angles, and ring geometry for all instances of the Ligand of Interest. In addition, ligands with molecular weight > 250 and outliers as shown on the validation Tables will also be included. For torsion angles, if less than 5% of the Mogul distribution of torsion angles is within 10 degrees of the torsion angle in question, then that torsion angle is considered an outlier. Any bond that is central to one or more torsion angles identified as an outlier by Mogul will be highlighted in the graph. For rings, the root-mean-square deviation (RMSD) between the ring in question and similar rings identified by Mogul is calculated over all ring torsion angles. If the average RMSD is greater than 60 degrees and the minimal RMSD between the ring in question and any Mogul-identified rings is also greater than 60 degrees, then that ring is considered an outlier. The outliers are highlighted in purple. The color gray indicates Mogul did not find sufficient equivalents in the CSD to analyse the geometry.



## 5.7 Other polymers [i](#)

There are no such residues in this entry.

## 5.8 Polymer linkage issues [i](#)

There are no chain breaks in this entry.

## 6 Fit of model and data

### 6.1 Protein, DNA and RNA chains

In the following table, the column labelled ‘#RSRZ> 2’ contains the number (and percentage) of RSRZ outliers, followed by percent RSRZ outliers for the chain as percentile scores relative to all X-ray entries and entries of similar resolution. The OWAB column contains the minimum, median, 95<sup>th</sup> percentile and maximum values of the occupancy-weighted average B-factor per residue. The column labelled ‘Q< 0.9’ lists the number of (and percentage) of residues with an average occupancy less than 0.9.

Mol	Chain	Analysed	<RSRZ>	#RSRZ>2	OWAB(Å <sup>2</sup> )	Q<0.9
1	A	229/240 (95%)	-0.05	12 (5%) 27 29	9, 18, 37, 45	0
1	B	224/240 (93%)	-0.03	11 (4%) 29 32	9, 18, 34, 40	0
2	C	10/19 (52%)	0.67	0 100 100	29, 35, 40, 47	0
2	D	10/19 (52%)	0.67	0 100 100	28, 34, 42, 47	0
All	All	473/518 (91%)	-0.01	23 (4%) 29 32	9, 18, 37, 47	0

All (23) RSRZ outliers are listed below:

Mol	Chain	Res	Type	RSRZ
1	A	484	VAL	10.6
1	B	484	VAL	8.1
1	A	412	PRO	5.7
1	B	410	MET	5.3
1	A	479	MET	5.2
1	B	479	MET	5.0
1	A	485	VAL	4.6
1	B	412	PRO	4.6
1	B	485	VAL	4.3
1	A	482	LYS	3.9
1	A	410	MET	3.7
1	B	409	SER	3.6
1	A	483	ASN	3.3
1	B	481	CYS	3.1
1	A	413	LEU	3.1
1	A	481	CYS	2.8
1	B	413	LEU	2.7
1	B	482	LYS	2.7
1	B	488	TYR	2.6
1	A	488	TYR	2.5
1	A	424	ARG	2.4

*Continued on next page...*

*Continued from previous page...*

Mol	Chain	Res	Type	RSRZ
1	A	325	PHE	2.3
1	B	478	ASN	2.0

## 6.2 Non-standard residues in protein, DNA, RNA chains [i](#)

There are no non-standard protein/DNA/RNA residues in this entry.

## 6.3 Carbohydrates [i](#)

There are no carbohydrates in this entry.

## 6.4 Ligands [i](#)

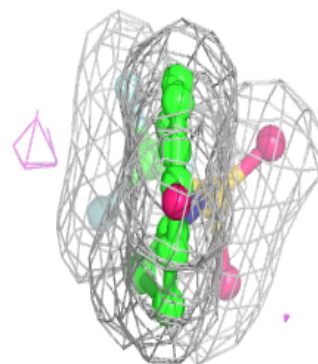
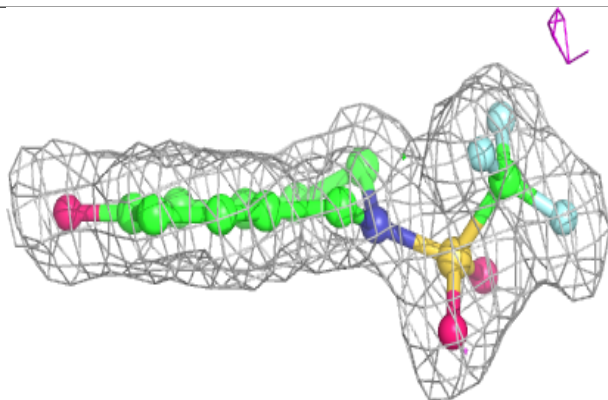
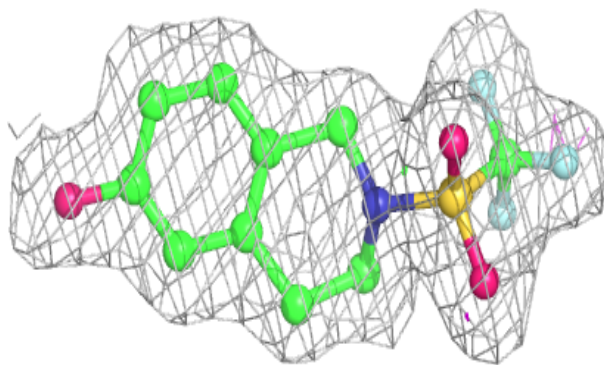
In the following table, the Atoms column lists the number of modelled atoms in the group and the number defined in the chemical component dictionary. The B-factors column lists the minimum, median, 95<sup>th</sup> percentile and maximum values of B factors of atoms in the group. The column labelled 'Q< 0.9' lists the number of atoms with occupancy less than 0.9.

Mol	Type	Chain	Res	Atoms	RSCC	RSR	B-factors(Å <sup>2</sup> )	Q<0.9
3	W23	B	1	18/18	0.96	0.08	9,16,22,23	0
3	W23	A	1	18/18	0.96	0.09	10,15,23,26	0

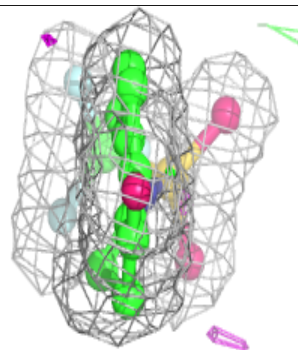
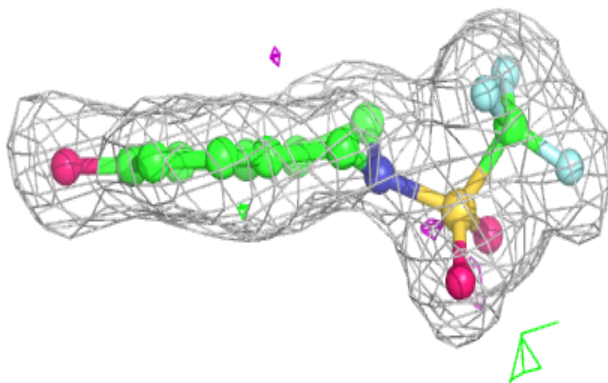
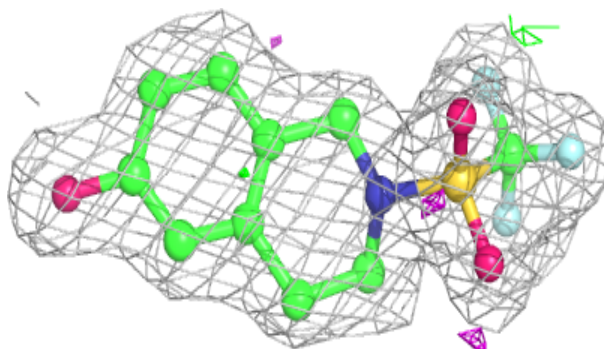
The following is a graphical depiction of the model fit to experimental electron density of all instances of the Ligand of Interest. In addition, ligands with molecular weight > 250 and outliers as shown on the geometry validation Tables will also be included. Each fit is shown from different orientation to approximate a three-dimensional view.

**Electron density around W23 B 1:**

$2mF_o-DF_c$  (at 0.7 rmsd) in gray  
 $mF_o-DF_c$  (at 3 rmsd) in purple (negative)  
and green (positive)

**Electron density around W23 A 1:**

$2mF_o-DF_c$  (at 0.7 rmsd) in gray  
 $mF_o-DF_c$  (at 3 rmsd) in purple (negative)  
and green (positive)



## 6.5 Other polymers [i](#)

There are no such residues in this entry.