



wwPDB X-ray Structure Validation Summary Report ⓘ

Aug 30, 2023 – 01:02 AM EDT

PDB ID : 3NOX
Title : Crystal structure of human DPP-IV in complex with Sa-(+)-(6-(aminomethyl)-5-(2,4-dichlorophenyl)-7-methylimidazo[1,2-a]pyrimidin-2-yl)(morpholino) methanone
Authors : Klei, H.E.
Deposited on : 2010-06-25
Resolution : 2.34 Å(reported)

This is a wwPDB X-ray Structure Validation Summary Report for a publicly released PDB entry.

We welcome your comments at validation@mail.wwpdb.org

A user guide is available at

<https://www.wwpdb.org/validation/2017/XrayValidationReportHelp>

with specific help available everywhere you see the ⓘ symbol.

The types of validation reports are described at

<http://www.wwpdb.org/validation/2017/FAQs#types>.

The following versions of software and data (see [references ⓘ](#)) were used in the production of this report:

MolProbity : 4.02b-467
Mogul : 1.8.5 (274361), CSD as541be (2020)
Xtriage (Phenix) : 1.13
EDS : 2.35
buster-report : 1.1.7 (2018)
Percentile statistics : 20191225.v01 (using entries in the PDB archive December 25th 2019)
Refmac : 5.8.0158
CCP4 : 7.0.044 (Gargrove)
Ideal geometry (proteins) : Engh & Huber (2001)
Ideal geometry (DNA, RNA) : Parkinson et al. (1996)
Validation Pipeline (wwPDB-VP) : 2.35

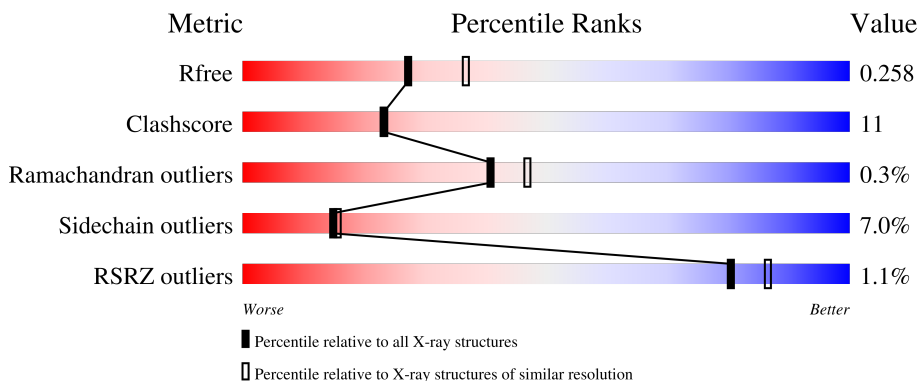
1 Overall quality at a glance

The following experimental techniques were used to determine the structure:

X-RAY DIFFRACTION


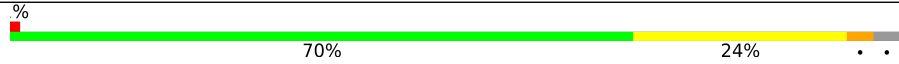

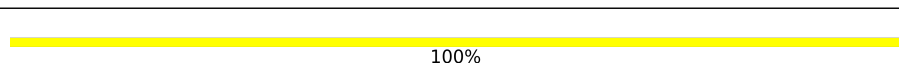
The reported resolution of this entry is 2.34 Å.

Percentile scores (ranging between 0-100) for global validation metrics of the entry are shown in the following graphic. The table shows the number of entries on which the scores are based.



Metric	Whole archive (#Entries)	Similar resolution (#Entries, resolution range(Å))
R_{free}	130704	2096 (2.36-2.32)
Clashscore	141614	2193 (2.36-2.32)
Ramachandran outliers	138981	2159 (2.36-2.32)
Sidechain outliers	138945	2160 (2.36-2.32)
RSRZ outliers	127900	2067 (2.36-2.32)

The table below summarises the geometric issues observed across the polymeric chains and their fit to the electron density. The red, orange, yellow and green segments of the lower bar indicate the fraction of residues that contain outliers for ≥ 3 , 2, 1 and 0 types of geometric quality criteria respectively. A grey segment represents the fraction of residues that are not modelled. The numeric value for each fraction is indicated below the corresponding segment, with a dot representing fractions $\leq 5\%$. The upper red bar (where present) indicates the fraction of residues that have poor fit to the electron density. The numeric value is given above the bar.

Mol	Chain	Length	Quality of chain
1	A	753	 72% 22%
1	B	753	 70% 24%
2	C	2	 50% 50%
2	D	2	 100%

The following table lists non-polymeric compounds, carbohydrate monomers and non-standard residues in protein, DNA, RNA chains that are outliers for geometric or electron-density-fit criteria:

Mol	Type	Chain	Res	Chirality	Geometry	Clashes	Electron density
3	NAG	B	1501	X	-	-	-

2 Entry composition i

There are 6 unique types of molecules in this entry. The entry contains 12620 atoms, of which 0 are hydrogens and 0 are deuteriums.

In the tables below, the ZeroOcc column contains the number of atoms modelled with zero occupancy, the AltConf column contains the number of residues with at least one atom in alternate conformation and the Trace column contains the number of residues modelled with at most 2 atoms.

- Molecule 1 is a protein called Dipeptidyl-peptidase 4 (CD26, adenosine deaminase complexing protein 2).

Mol	Chain	Residues	Atoms					ZeroOcc	AltConf	Trace
			Total	C	N	O	S			
1	A	727	5940	3817	973	1124	26	0	0	0
1	B	727	5943	3819	977	1121	26	0	1	0

There are 50 discrepancies between the modelled and reference sequences:

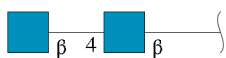
Chain	Residue	Modelled	Actual	Comment	Reference
A	37	GLU	-	expression tag	UNP Q53TN1
A	38	PHE	-	expression tag	UNP Q53TN1
A	767	PRO	-	expression tag	UNP Q53TN1
A	768	LEU	-	expression tag	UNP Q53TN1
A	769	GLU	-	expression tag	UNP Q53TN1
A	770	GLN	-	expression tag	UNP Q53TN1
A	771	LYS	-	expression tag	UNP Q53TN1
A	772	LEU	-	expression tag	UNP Q53TN1
A	773	ILE	-	expression tag	UNP Q53TN1
A	774	SER	-	expression tag	UNP Q53TN1
A	775	GLU	-	expression tag	UNP Q53TN1
A	776	GLU	-	expression tag	UNP Q53TN1
A	777	ASP	-	expression tag	UNP Q53TN1
A	778	LEU	-	expression tag	UNP Q53TN1
A	779	ASN	-	expression tag	UNP Q53TN1
A	780	SER	-	expression tag	UNP Q53TN1
A	781	ALA	-	expression tag	UNP Q53TN1
A	782	VAL	-	expression tag	UNP Q53TN1
A	783	ASP	-	expression tag	UNP Q53TN1
A	784	HIS	-	expression tag	UNP Q53TN1
A	785	HIS	-	expression tag	UNP Q53TN1
A	786	HIS	-	expression tag	UNP Q53TN1
A	787	HIS	-	expression tag	UNP Q53TN1
A	788	HIS	-	expression tag	UNP Q53TN1

Continued on next page...

Continued from previous page...

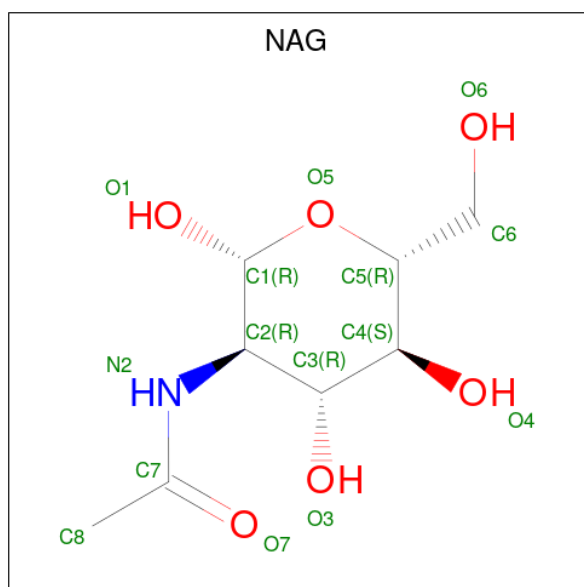
Chain	Residue	Modelled	Actual	Comment	Reference
A	789	HIS	-	expression tag	UNP Q53TN1
B	37	GLU	-	expression tag	UNP Q53TN1
B	38	PHE	-	expression tag	UNP Q53TN1
B	767	PRO	-	expression tag	UNP Q53TN1
B	768	LEU	-	expression tag	UNP Q53TN1
B	769	GLU	-	expression tag	UNP Q53TN1
B	770	GLN	-	expression tag	UNP Q53TN1
B	771	LYS	-	expression tag	UNP Q53TN1
B	772	LEU	-	expression tag	UNP Q53TN1
B	773	ILE	-	expression tag	UNP Q53TN1
B	774	SER	-	expression tag	UNP Q53TN1
B	775	GLU	-	expression tag	UNP Q53TN1
B	776	GLU	-	expression tag	UNP Q53TN1
B	777	ASP	-	expression tag	UNP Q53TN1
B	778	LEU	-	expression tag	UNP Q53TN1
B	779	ASN	-	expression tag	UNP Q53TN1
B	780	SER	-	expression tag	UNP Q53TN1
B	781	ALA	-	expression tag	UNP Q53TN1
B	782	VAL	-	expression tag	UNP Q53TN1
B	783	ASP	-	expression tag	UNP Q53TN1
B	784	HIS	-	expression tag	UNP Q53TN1
B	785	HIS	-	expression tag	UNP Q53TN1
B	786	HIS	-	expression tag	UNP Q53TN1
B	787	HIS	-	expression tag	UNP Q53TN1
B	788	HIS	-	expression tag	UNP Q53TN1
B	789	HIS	-	expression tag	UNP Q53TN1

- Molecule 2 is an oligosaccharide called 2-acetamido-2-deoxy-beta-D-glucopyranose-(1-4)-2-acetamido-2-deoxy-beta-D-glucopyranose.



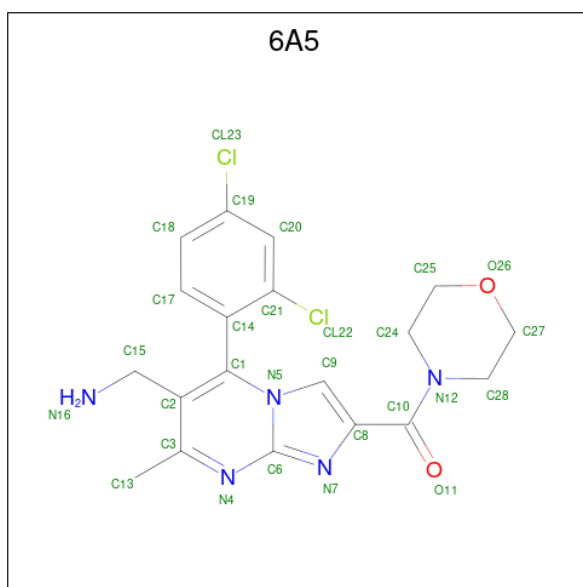
Mol	Chain	Residues	Atoms			ZeroOcc	AltConf	Trace	
2	C	2	Total	C	N	O	0	0	0
			28	16	2	10			
2	D	2	Total	C	N	O	0	0	0
			28	16	2	10			

- Molecule 3 is 2-acetamido-2-deoxy-beta-D-glucopyranose (three-letter code: NAG) (formula: C₈H₁₅NO₆).



Mol	Chain	Residues	Atoms				ZeroOcc	AltConf
			Total	C	N	O		
3	A	1	14	8	1	5	0	0
3	A	1	14	8	1	5	0	0
3	A	1	14	8	1	5	0	0
3	A	1	14	8	1	5	0	0
3	A	1	14	8	1	5	0	0
3	B	1	14	8	1	5	0	0
3	B	1	14	8	1	5	0	0
3	B	1	14	8	1	5	0	0
3	B	1	14	8	1	5	0	0
3	B	1	14	8	1	5	0	0

- Molecule 4 is Sa-(+)-(6-(aminomethyl)-5-(2,4-dichlorophenyl)-7-methylimidazo[1,2-a]pyrimidin-2-yl)(morpholino)methanone (three-letter code: 6A5) (formula: C₁₉H₁₉Cl₂N₅O₂).



Mol	Chain	Residues	Atoms				ZeroOcc	AltConf	
4	A	1	Total	C	Cl	N	O	0	0
			28	19	2	5	2		
4	B	1	Total	C	Cl	N	O	0	0
			28	19	2	5	2		

- Molecule 5 is GLYCEROL (three-letter code: GOL) (formula: $C_3H_8O_3$).



Mol	Chain	Residues	Atoms			ZeroOcc	AltConf
5	B	1	Total	C	O	0	0
			6	3	3		

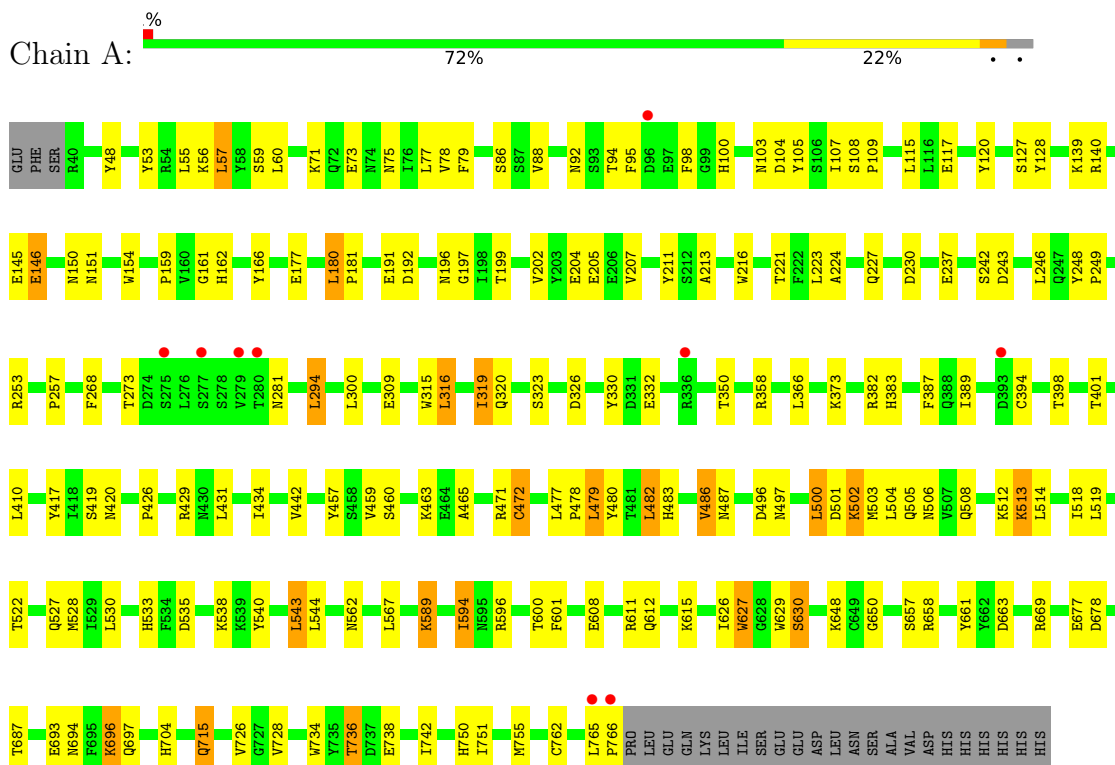
- Molecule 6 is water.

Mol	Chain	Residues	Atoms		ZeroOcc	AltConf
6	A	224	Total 224	O 224	0	0
6	B	255	Total 255	O 255	0	0

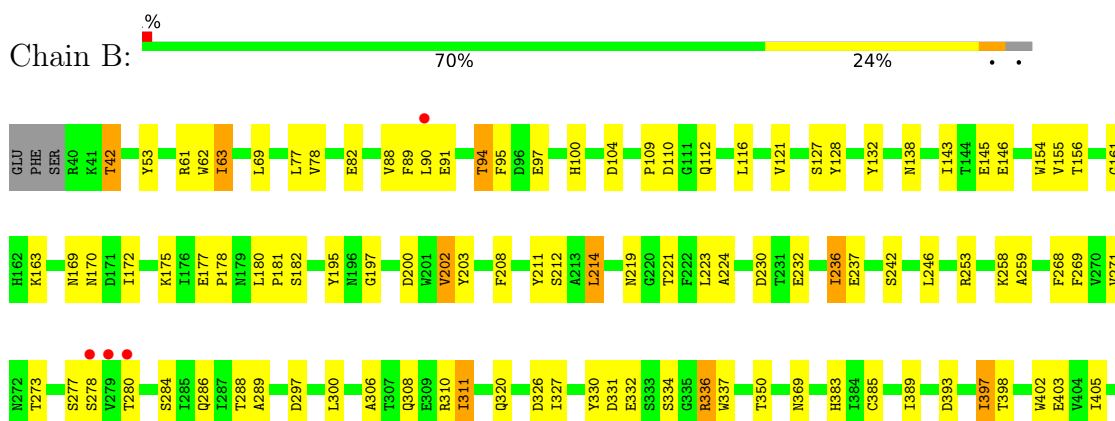
3 Residue-property plots [i](#)

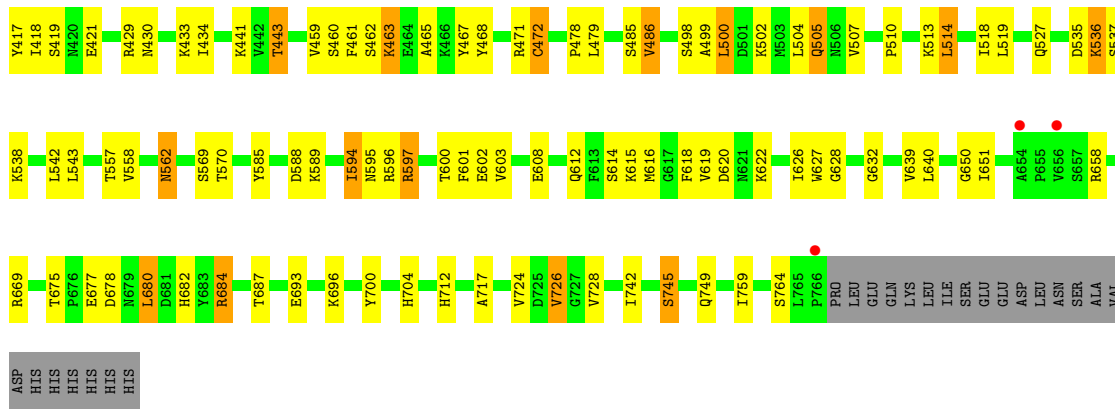
These plots are drawn for all protein, RNA, DNA and oligosaccharide chains in the entry. The first graphic for a chain summarises the proportions of the various outlier classes displayed in the second graphic. The second graphic shows the sequence view annotated by issues in geometry and electron density. Residues are color-coded according to the number of geometric quality criteria for which they contain at least one outlier: green = 0, yellow = 1, orange = 2 and red = 3 or more. A red dot above a residue indicates a poor fit to the electron density ($RSRZ > 2$). Stretches of 2 or more consecutive residues without any outlier are shown as a green connector. Residues present in the sample, but not in the model, are shown in grey.

- Molecule 1: Dipeptidyl-peptidase 4 (CD26, adenosine deaminase complexing protein 2)



- Molecule 1: Dipeptidyl-peptidase 4 (CD26, adenosine deaminase complexing protein 2)





- Molecule 2: 2-acetamido-2-deoxy-beta-D-glucofuranose-(1-4)-2-acetamido-2-deoxy-beta-D-glucofuranose

Chain C: 50%

MAG1
MAG2

- Molecule 2: 2-acetamido-2-deoxy-beta-D-glucofuranose-(1-4)-2-acetamido-2-deoxy-beta-D-glucofuranose

Chain D: 100%

MAG1
MAG2

4 Data and refinement statistics i

Property	Value	Source
Space group	P 21 21 21	Depositor
Cell constants a, b, c, α , β , γ	65.45Å 67.07Å 420.44Å 90.00° 90.00° 90.00°	Depositor
Resolution (Å)	35.62 – 2.34 35.62 – 2.34	Depositor EDS
% Data completeness (in resolution range)	86.1 (35.62-2.34) 86.1 (35.62-2.34)	Depositor EDS
R_{merge}	0.11	Depositor
R_{sym}	(Not available)	Depositor
$\langle I/\sigma(I) \rangle$ ¹	2.98 (at 2.34Å)	Xtrriage
Refinement program	PHENIX (PHENIX.REFINE: DEV_446)	Depositor
R, R_{free}	0.196 , 0.264 0.192 , 0.258	Depositor DCC
R_{free} test set	1540 reflections (2.24%)	wwPDB-VP
Wilson B-factor (Å ²)	34.3	Xtrriage
Anisotropy	0.603	Xtrriage
Bulk solvent k_{sol} (e/Å ³), B_{sol} (Å ²)	0.33 , 39.4	EDS
L-test for twinning ²	$\langle L \rangle = 0.44$, $\langle L^2 \rangle = 0.27$	Xtrriage
Estimated twinning fraction	0.049 for k,h,-l	Xtrriage
F_o, F_c correlation	0.95	EDS
Total number of atoms	12620	wwPDB-VP
Average B, all atoms (Å ²)	42.0	wwPDB-VP

Xtrriage's analysis on translational NCS is as follows: *The largest off-origin peak in the Patterson function is 2.80% of the height of the origin peak. No significant pseudotranslation is detected.*

¹Intensities estimated from amplitudes.

²Theoretical values of $\langle |L| \rangle$, $\langle L^2 \rangle$ for acentric reflections are 0.5, 0.333 respectively for untwinned datasets, and 0.375, 0.2 for perfectly twinned datasets.

5 Model quality

5.1 Standard geometry

Bond lengths and bond angles in the following residue types are not validated in this section: NAG, 6A5, GOL

The Z score for a bond length (or angle) is the number of standard deviations the observed value is removed from the expected value. A bond length (or angle) with $|Z| > 5$ is considered an outlier worth inspection. RMSZ is the root-mean-square of all Z scores of the bond lengths (or angles).

Mol	Chain	Bond lengths		Bond angles	
		RMSZ	# Z >5	RMSZ	# Z >5
1	A	0.42	0/6112	0.57	0/8316
1	B	0.43	0/6118	0.60	0/8324
All	All	0.42	0/12230	0.58	0/16640

There are no bond length outliers.

There are no bond angle outliers.

There are no chirality outliers.

There are no planarity outliers.

5.2 Too-close contacts

In the following table, the Non-H and H(model) columns list the number of non-hydrogen atoms and hydrogen atoms in the chain respectively. The H(added) column lists the number of hydrogen atoms added and optimized by MolProbity. The Clashes column lists the number of clashes within the asymmetric unit, whereas Symm-Clashes lists symmetry-related clashes.

Mol	Chain	Non-H	H(model)	H(added)	Clashes	Symm-Clashes
1	A	5940	0	5633	134	0
1	B	5943	0	5639	136	0
2	C	28	0	25	0	0
2	D	28	0	25	0	0
3	A	70	0	65	4	0
3	B	70	0	65	1	0
4	A	28	0	19	1	0
4	B	28	0	19	0	0
5	B	6	0	8	1	0
6	A	224	0	0	6	0
6	B	255	0	0	5	0
All	All	12620	0	11498	266	0

The all-atom clashscore is defined as the number of clashes found per 1000 atoms (including hydrogen atoms). The all-atom clashscore for this structure is 11.

The worst 5 of 266 close contacts within the same asymmetric unit are listed below, sorted by their clash magnitude.

Atom-1	Atom-2	Interatomic distance (Å)	Clash overlap (Å)
1:A:273:THR:HB	6:A:805:HOH:O	1.49	1.12
1:B:177:GLU:HB2	1:B:180:LEU:HD23	1.40	1.03
1:B:600:THR:HG22	1:B:601:PHE:H	1.31	0.95
1:B:600:THR:HG22	1:B:601:PHE:N	1.83	0.93
1:A:319:ILE:HD12	1:A:319:ILE:H	1.34	0.92

There are no symmetry-related clashes.

5.3 Torsion angles [i](#)

5.3.1 Protein backbone [i](#)

In the following table, the Percentiles column shows the percent Ramachandran outliers of the chain as a percentile score with respect to all X-ray entries followed by that with respect to entries of similar resolution.

The Analysed column shows the number of residues for which the backbone conformation was analysed, and the total number of residues.

Mol	Chain	Analysed	Favoured	Allowed	Outliers	Percentiles
1	A	725/753 (96%)	680 (94%)	42 (6%)	3 (0%)	34 38
1	B	726/753 (96%)	688 (95%)	37 (5%)	1 (0%)	51 62
All	All	1451/1506 (96%)	1368 (94%)	79 (5%)	4 (0%)	41 47

All (4) Ramachandran outliers are listed below:

Mol	Chain	Res	Type
1	A	389	ILE
1	A	146	GLU
1	A	242	SER
1	B	242	SER

5.3.2 Protein sidechains [i](#)

In the following table, the Percentiles column shows the percent sidechain outliers of the chain as a percentile score with respect to all X-ray entries followed by that with respect to entries of similar resolution.

The Analysed column shows the number of residues for which the sidechain conformation was analysed, and the total number of residues.

Mol	Chain	Analysed	Rotameric	Outliers	Percentiles	
1	A	646/677 (95%)	604 (94%)	42 (6%)	17	19
1	B	646/677 (95%)	597 (92%)	49 (8%)	13	13
All	All	1292/1354 (95%)	1201 (93%)	91 (7%)	15	16

5 of 91 residues with a non-rotameric sidechain are listed below:

Mol	Chain	Res	Type
1	B	246	LEU
1	B	472	CYS
1	B	311	ILE
1	B	393	ASP
1	B	505	GLN

Sometimes sidechains can be flipped to improve hydrogen bonding and reduce clashes. 5 of 15 such sidechains are listed below:

Mol	Chain	Res	Type
1	A	612	GLN
1	B	505	GLN
1	A	697	GLN
1	B	562	ASN
1	B	169	ASN

5.3.3 RNA [i](#)

There are no RNA molecules in this entry.

5.4 Non-standard residues in protein, DNA, RNA chains [i](#)

There are no non-standard protein/DNA/RNA residues in this entry.

5.5 Carbohydrates i

4 monosaccharides are modelled in this entry.

In the following table, the Counts columns list the number of bonds (or angles) for which Mogul statistics could be retrieved, the number of bonds (or angles) that are observed in the model and the number of bonds (or angles) that are defined in the Chemical Component Dictionary. The Link column lists molecule types, if any, to which the group is linked. The Z score for a bond length (or angle) is the number of standard deviations the observed value is removed from the expected value. A bond length (or angle) with $|Z| > 2$ is considered an outlier worth inspection. RMSZ is the root-mean-square of all Z scores of the bond lengths (or angles).

Mol	Type	Chain	Res	Link	Bond lengths			Bond angles		
					Counts	RMSZ	# Z > 2	Counts	RMSZ	# Z > 2
2	NAG	C	1	2,1	14,14,15	0.56	0	17,19,21	0.73	0
2	NAG	C	2	2	14,14,15	0.46	0	17,19,21	1.26	1 (5%)
2	NAG	D	1	2,1	14,14,15	0.59	0	17,19,21	1.24	1 (5%)
2	NAG	D	2	2	14,14,15	0.72	1 (7%)	17,19,21	1.79	5 (29%)

In the following table, the Chirals column lists the number of chiral outliers, the number of chiral centers analysed, the number of these observed in the model and the number defined in the Chemical Component Dictionary. Similar counts are reported in the Torsion and Rings columns. '-' means no outliers of that kind were identified.

Mol	Type	Chain	Res	Link	Chirals	Torsions	Rings
2	NAG	C	1	2,1	-	0/6/23/26	0/1/1/1
2	NAG	C	2	2	-	0/6/23/26	0/1/1/1
2	NAG	D	1	2,1	-	0/6/23/26	0/1/1/1
2	NAG	D	2	2	-	1/6/23/26	0/1/1/1

All (1) bond length outliers are listed below:

Mol	Chain	Res	Type	Atoms	Z	Observed(Å)	Ideal(Å)
2	D	2	NAG	O5-C1	-2.07	1.40	1.43

The worst 5 of 7 bond angle outliers are listed below:

Mol	Chain	Res	Type	Atoms	Z	Observed(°)	Ideal(°)
2	D	2	NAG	O5-C1-C2	-4.69	103.88	111.29
2	C	2	NAG	C1-O5-C5	4.14	117.80	112.19
2	D	1	NAG	C2-N2-C7	-3.24	118.29	122.90
2	D	2	NAG	C3-C4-C5	3.08	115.73	110.24
2	D	2	NAG	C4-C3-C2	2.32	114.42	111.02

There are no chirality outliers.

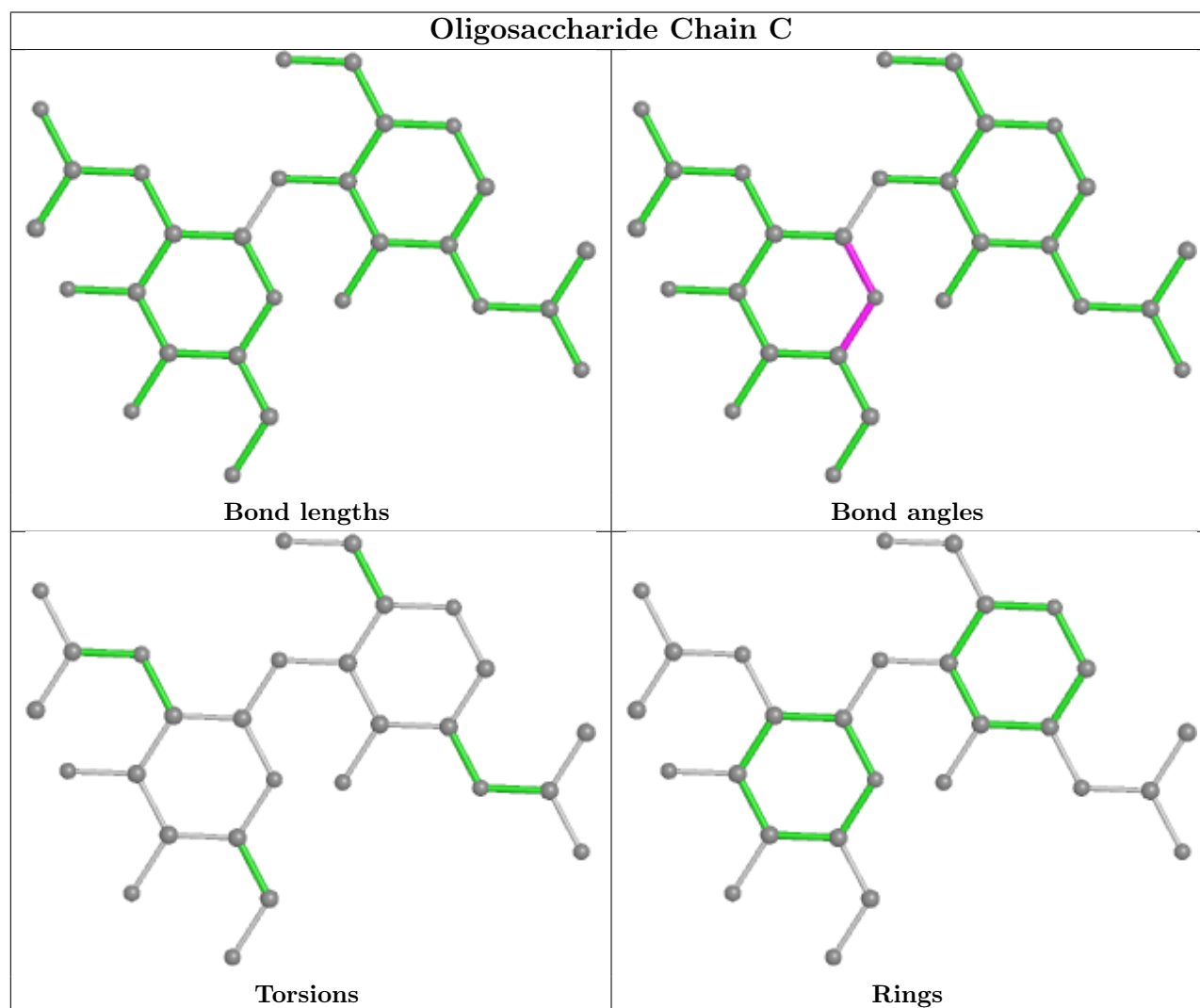
All (1) torsion outliers are listed below:

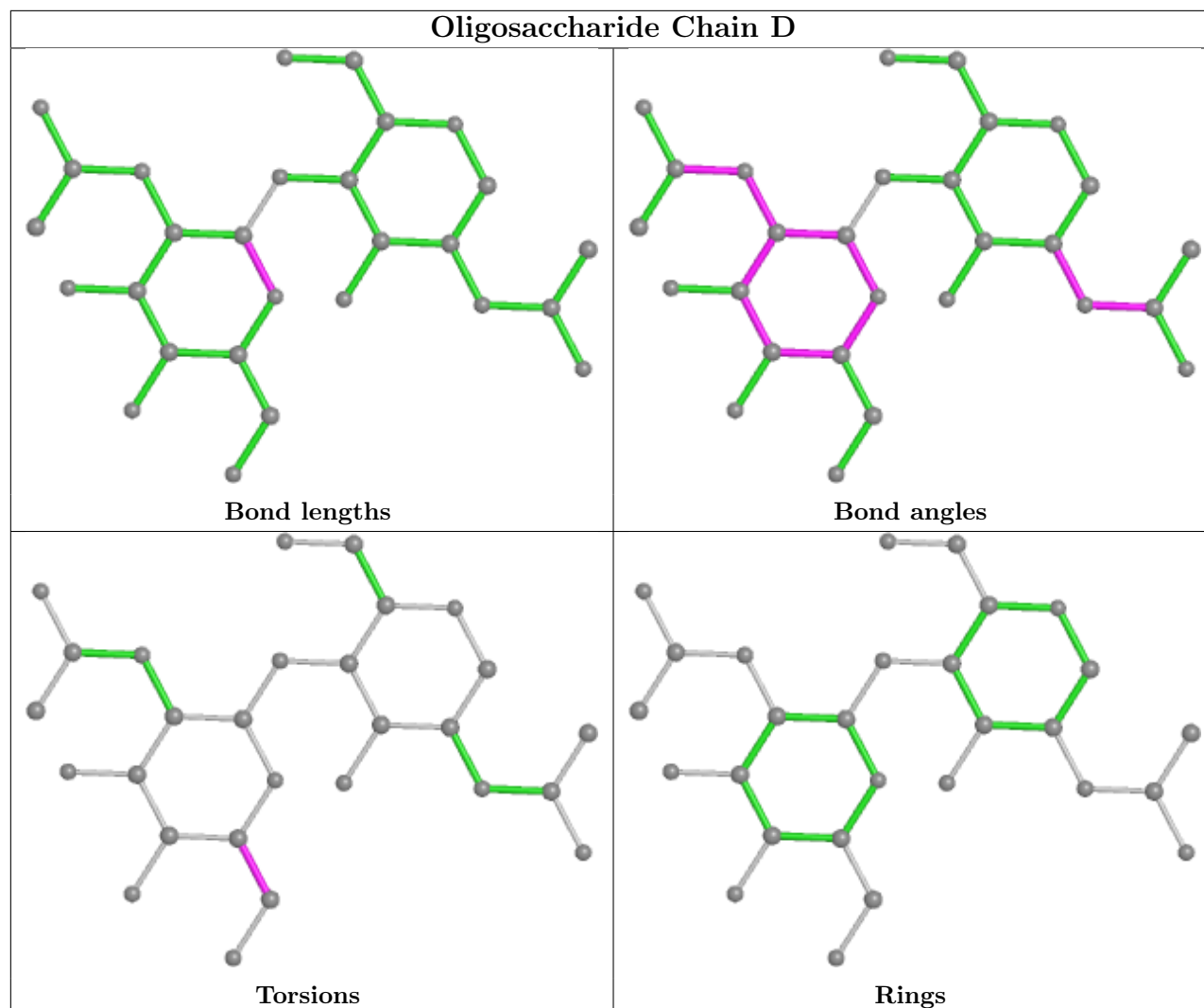
Mol	Chain	Res	Type	Atoms
2	D	2	NAG	C4-C5-C6-O6

There are no ring outliers.

No monomer is involved in short contacts.

The following is a two-dimensional graphical depiction of Mogul quality analysis of bond lengths, bond angles, torsion angles, and ring geometry for oligosaccharide.





5.6 Ligand geometry [i](#)

13 ligands are modelled in this entry.

In the following table, the Counts columns list the number of bonds (or angles) for which Mogul statistics could be retrieved, the number of bonds (or angles) that are observed in the model and the number of bonds (or angles) that are defined in the Chemical Component Dictionary. The Link column lists molecule types, if any, to which the group is linked. The Z score for a bond length (or angle) is the number of standard deviations the observed value is removed from the expected value. A bond length (or angle) with $|Z| > 2$ is considered an outlier worth inspection. RMSZ is the root-mean-square of all Z scores of the bond lengths (or angles).

Mol	Type	Chain	Res	Link	Bond lengths			Bond angles		
					Counts	RMSZ	$\# Z > 2$	Counts	RMSZ	$\# Z > 2$
3	NAG	B	1501	1	14,14,15	0.75	0	17,19,21	1.66	3 (17%)
3	NAG	A	1501	1	14,14,15	0.50	0	17,19,21	1.30	3 (17%)
5	GOL	B	1	-	5,5,5	0.34	0	5,5,5	0.37	0

Mol	Type	Chain	Res	Link	Bond lengths			Bond angles		
					Counts	RMSZ	# Z > 2	Counts	RMSZ	# Z > 2
4	6A5	B	2	-	26,31,31	1.65	5 (19%)	30,45,45	1.76	9 (30%)
3	NAG	B	851	1	14,14,15	0.53	0	17,19,21	1.31	2 (11%)
3	NAG	B	5201	1	14,14,15	0.61	0	17,19,21	1.18	1 (5%)
4	6A5	A	1	-	26,31,31	1.48	4 (15%)	30,45,45	1.33	3 (10%)
3	NAG	A	851	1	14,14,15	0.58	0	17,19,21	0.91	0
3	NAG	A	2191	1	14,14,15	0.56	0	17,19,21	1.30	2 (11%)
3	NAG	A	5201	1	14,14,15	0.46	0	17,19,21	1.16	2 (11%)
3	NAG	B	2191	1	14,14,15	0.63	0	17,19,21	1.01	1 (5%)
3	NAG	B	921	1	14,14,15	0.44	0	17,19,21	0.99	2 (11%)
3	NAG	A	2811	-	14,14,15	0.60	0	17,19,21	1.40	3 (17%)

In the following table, the Chirals column lists the number of chiral outliers, the number of chiral centers analysed, the number of these observed in the model and the number defined in the Chemical Component Dictionary. Similar counts are reported in the Torsion and Rings columns. '-' means no outliers of that kind were identified.

Mol	Type	Chain	Res	Link	Chirals	Torsions	Rings
3	NAG	B	1501	1	1/1/5/7	3/6/23/26	0/1/1/1
3	NAG	A	1501	1	-	1/6/23/26	0/1/1/1
5	GOL	B	1	-	-	2/4/4/4	-
4	6A5	B	2	-	-	0/4/22/22	0/4/4/4
3	NAG	B	851	1	-	0/6/23/26	0/1/1/1
3	NAG	B	5201	1	-	3/6/23/26	0/1/1/1
4	6A5	A	1	-	-	2/4/22/22	0/4/4/4
3	NAG	A	851	1	-	0/6/23/26	0/1/1/1
3	NAG	A	2191	1	-	2/6/23/26	0/1/1/1
3	NAG	A	5201	1	-	2/6/23/26	0/1/1/1
3	NAG	B	2191	1	-	4/6/23/26	0/1/1/1
3	NAG	B	921	1	-	2/6/23/26	0/1/1/1
3	NAG	A	2811	-	-	2/6/23/26	0/1/1/1

The worst 5 of 9 bond length outliers are listed below:

Mol	Chain	Res	Type	Atoms	Z	Observed(Å)	Ideal(Å)
4	B	2	6A5	C8-C10	-3.58	1.44	1.50
4	B	2	6A5	C19-CL23	-3.50	1.66	1.74
4	A	1	6A5	C2-C1	-3.33	1.37	1.43
4	B	2	6A5	C2-C1	-2.94	1.38	1.43

Continued on next page...

Continued from previous page...

Mol	Chain	Res	Type	Atoms	Z	Observed(Å)	Ideal(Å)
4	B	2	6A5	C1-N5	-2.81	1.36	1.41

The worst 5 of 31 bond angle outliers are listed below:

Mol	Chain	Res	Type	Atoms	Z	Observed(°)	Ideal(°)
4	B	2	6A5	C8-C9-N5	-4.59	103.07	107.84
3	B	1501	NAG	O5-C1-C2	-4.39	104.36	111.29
4	A	1	6A5	C2-C3-N4	3.49	126.03	122.00
3	B	1501	NAG	C4-C3-C2	3.42	116.03	111.02
4	B	2	6A5	C2-C3-N4	3.38	125.89	122.00

All (1) chirality outliers are listed below:

Mol	Chain	Res	Type	Atom
3	B	1501	NAG	C1

5 of 23 torsion outliers are listed below:

Mol	Chain	Res	Type	Atoms
3	B	921	NAG	C8-C7-N2-C2
3	B	921	NAG	O7-C7-N2-C2
3	B	1501	NAG	C8-C7-N2-C2
3	B	1501	NAG	O7-C7-N2-C2
3	A	2811	NAG	C8-C7-N2-C2

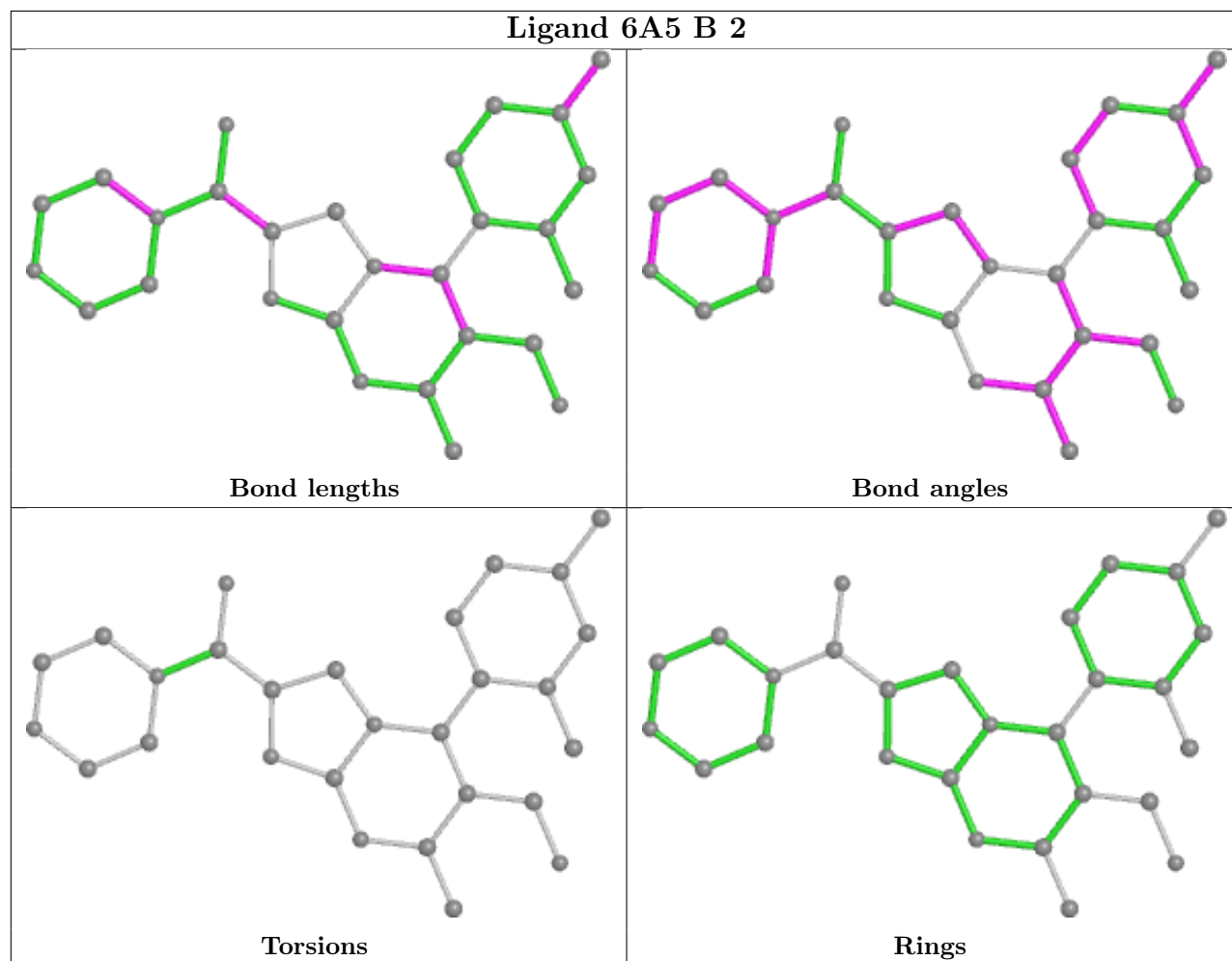
There are no ring outliers.

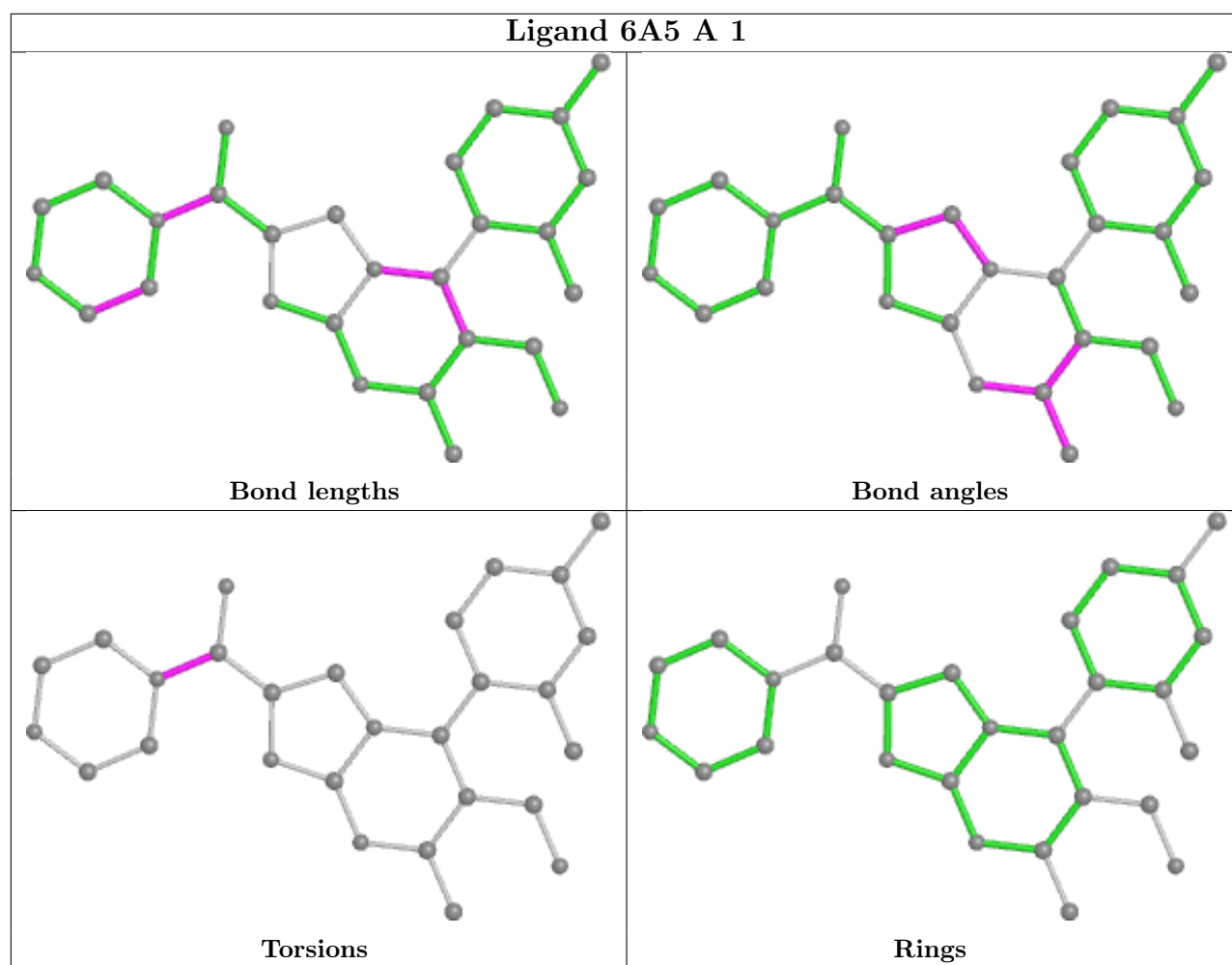
5 monomers are involved in 7 short contacts:

Mol	Chain	Res	Type	Clashes	Symm-Clashes
5	B	1	GOL	1	0
4	A	1	6A5	1	0
3	A	2191	NAG	1	0
3	B	2191	NAG	1	0
3	A	2811	NAG	3	0

The following is a two-dimensional graphical depiction of Mogul quality analysis of bond lengths, bond angles, torsion angles, and ring geometry for all instances of the Ligand of Interest. In addition, ligands with molecular weight > 250 and outliers as shown on the validation Tables will also be included. For torsion angles, if less than 5% of the Mogul distribution of torsion angles is within 10 degrees of the torsion angle in question, then that torsion angle is considered an outlier. Any bond that is central to one or more torsion angles identified as an outlier by Mogul will be highlighted in the graph. For rings, the root-mean-square deviation (RMSD) between the ring

in question and similar rings identified by Mogul is calculated over all ring torsion angles. If the average RMSD is greater than 60 degrees and the minimal RMSD between the ring in question and any Mogul-identified rings is also greater than 60 degrees, then that ring is considered an outlier. The outliers are highlighted in purple. The color gray indicates Mogul did not find sufficient equivalents in the CSD to analyse the geometry.





5.7 Other polymers [i](#)

There are no such residues in this entry.

5.8 Polymer linkage issues [i](#)

There are no chain breaks in this entry.

6 Fit of model and data [i](#)

6.1 Protein, DNA and RNA chains [i](#)

In the following table, the column labelled ‘#RSRZ > 2’ contains the number (and percentage) of RSRZ outliers, followed by percent RSRZ outliers for the chain as percentile scores relative to all X-ray entries and entries of similar resolution. The OWAB column contains the minimum, median, 95th percentile and maximum values of the occupancy-weighted average B-factor per residue. The column labelled ‘Q < 0.9’ lists the number of (and percentage) of residues with an average occupancy less than 0.9.

Mol	Chain	Analysed	<RSRZ>	#RSRZ>2	OWAB(Å ²)	Q<0.9
1	A	727/753 (96%)	-0.17	9 (1%) 79 85	27, 40, 65, 78	0
1	B	727/753 (96%)	-0.26	7 (0%) 82 88	26, 38, 59, 78	0
All	All	1454/1506 (96%)	-0.21	16 (1%) 80 86	26, 39, 62, 78	0

The worst 5 of 16 RSRZ outliers are listed below:

Mol	Chain	Res	Type	RSRZ
1	B	279	VAL	5.0
1	A	279	VAL	4.4
1	B	766	PRO	4.2
1	B	278	SER	3.6
1	A	765	LEU	3.0

6.2 Non-standard residues in protein, DNA, RNA chains [i](#)

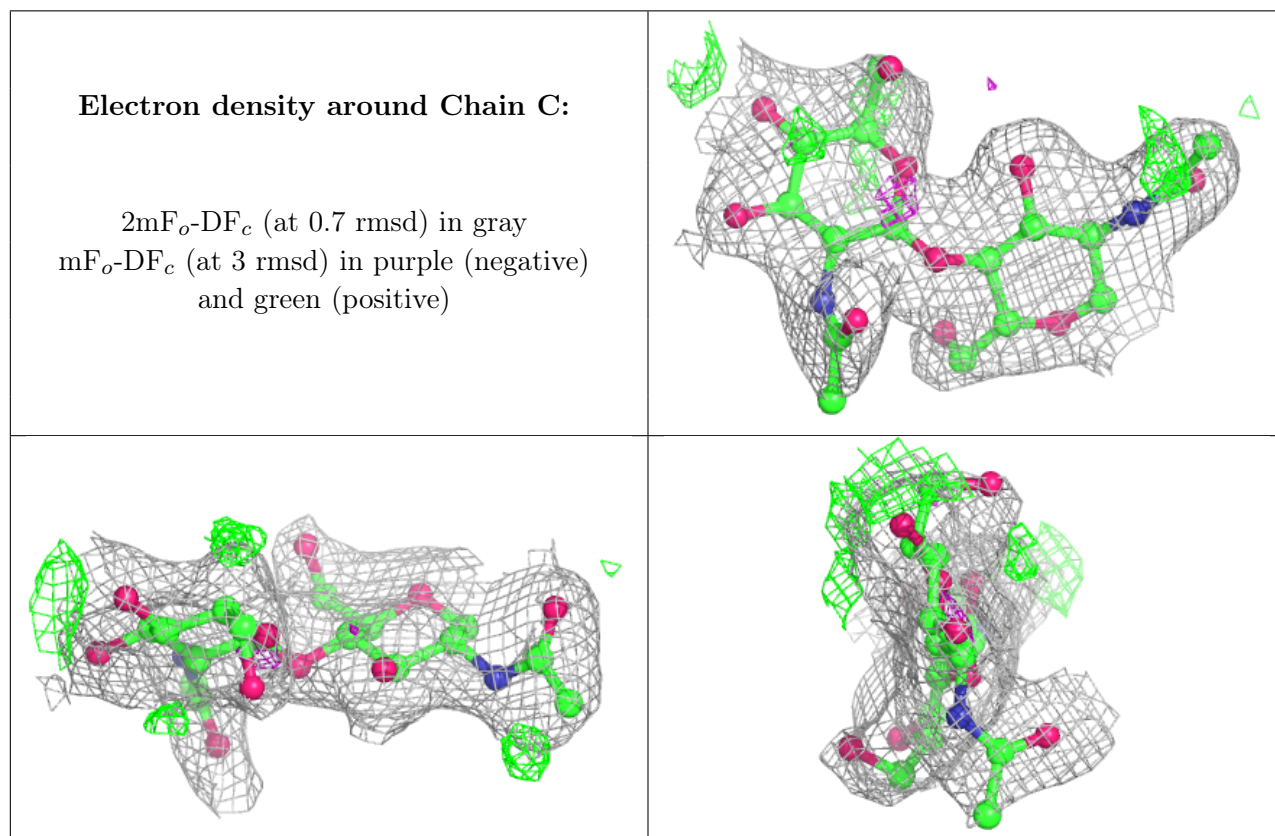
There are no non-standard protein/DNA/RNA residues in this entry.

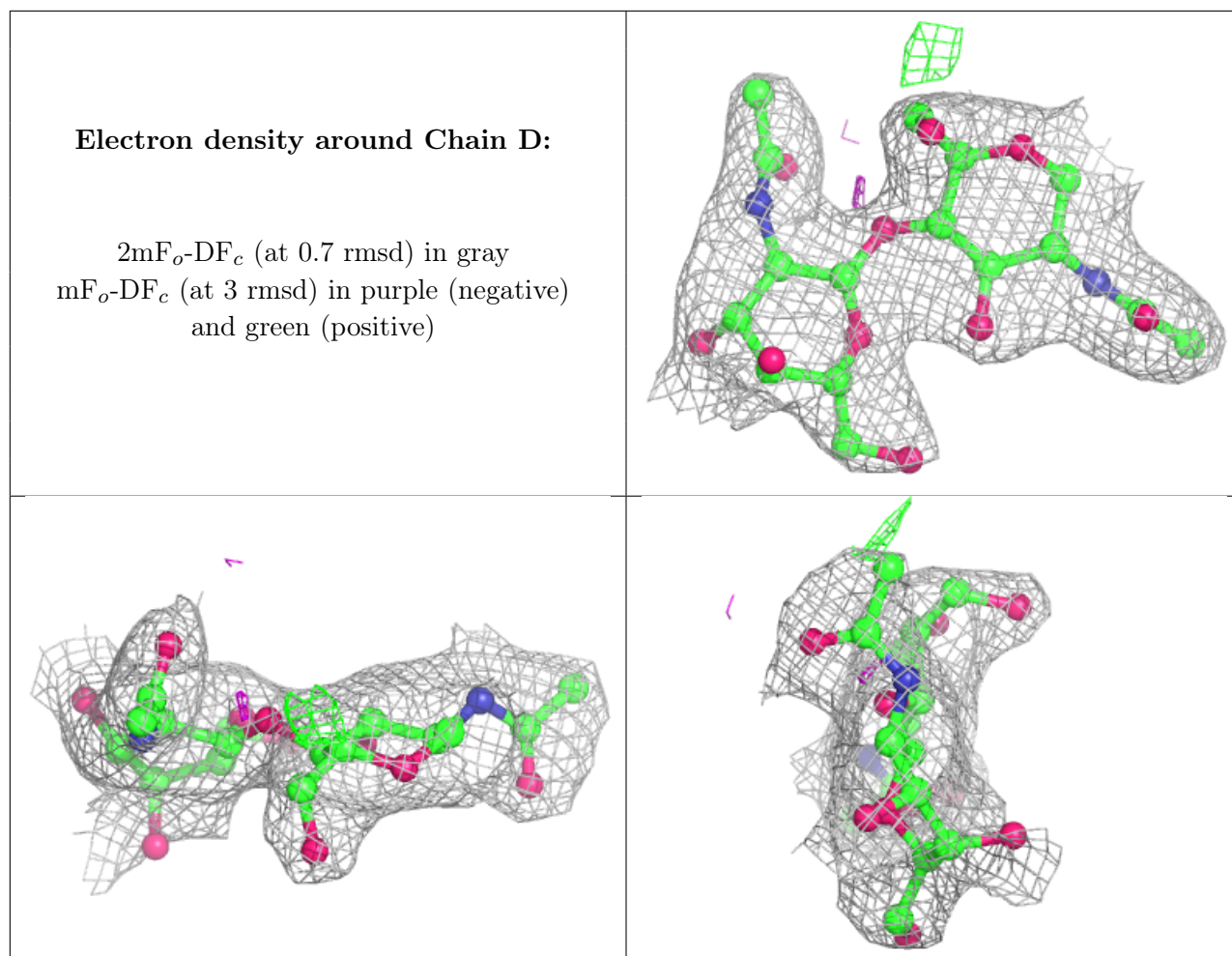
6.3 Carbohydrates [i](#)

In the following table, the Atoms column lists the number of modelled atoms in the group and the number defined in the chemical component dictionary. The B-factors column lists the minimum, median, 95th percentile and maximum values of B factors of atoms in the group. The column labelled ‘Q < 0.9’ lists the number of atoms with occupancy less than 0.9.

Mol	Type	Chain	Res	Atoms	RSCC	RSR	B-factors(Å ²)	Q<0.9
2	NAG	C	2	14/15	0.84	0.28	63,67,73,74	0
2	NAG	D	1	14/15	0.91	0.13	43,54,67,72	0
2	NAG	D	2	14/15	0.91	0.25	61,71,80,84	0
2	NAG	C	1	14/15	0.92	0.11	41,51,56,60	0

The following is a graphical depiction of the model fit to experimental electron density for oligosaccharide. Each fit is shown from different orientation to approximate a three-dimensional view.





6.4 Ligands [i](#)

In the following table, the Atoms column lists the number of modelled atoms in the group and the number defined in the chemical component dictionary. The B-factors column lists the minimum, median, 95th percentile and maximum values of B factors of atoms in the group. The column labelled 'Q< 0.9' lists the number of atoms with occupancy less than 0.9.

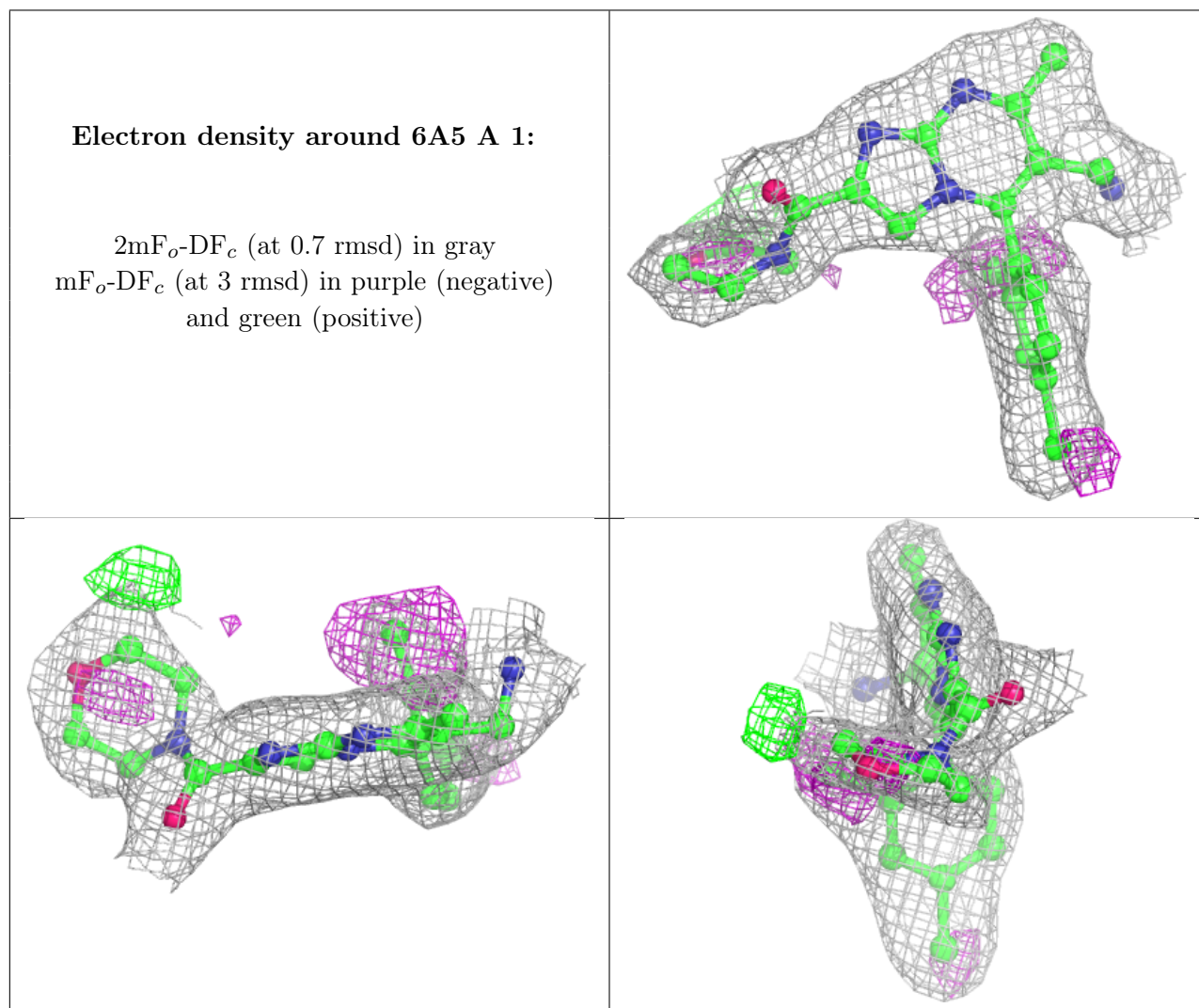
Mol	Type	Chain	Res	Atoms	RSCC	RSR	B-factors(Å ²)	Q<0.9
3	NAG	A	2191	14/15	0.69	0.34	70,76,80,82	0
3	NAG	A	5201	14/15	0.82	0.34	58,75,83,87	0
3	NAG	B	1501	14/15	0.82	0.22	60,74,85,91	0
5	GOL	B	1	6/6	0.82	0.17	43,52,57,64	0
3	NAG	B	5201	14/15	0.84	0.30	50,62,81,84	0
3	NAG	A	2811	14/15	0.86	0.26	65,75,79,81	0
3	NAG	B	921	14/15	0.87	0.21	70,75,82,82	0
3	NAG	B	2191	14/15	0.87	0.33	57,66,72,72	0
3	NAG	A	1501	14/15	0.88	0.17	69,75,84,85	0
4	6A5	A	1	28/28	0.90	0.17	31,40,49,58	0

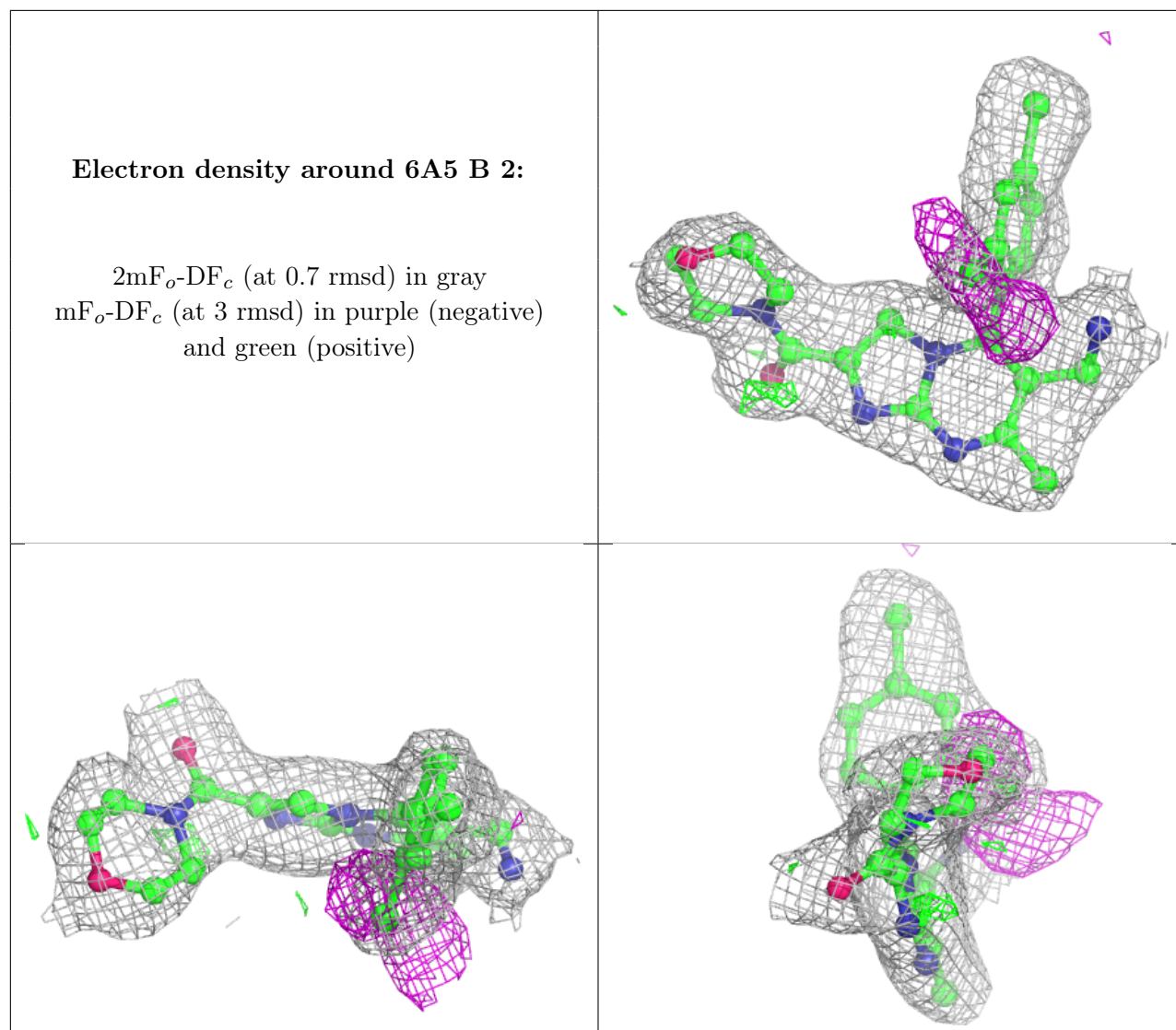
Continued on next page...

Continued from previous page...

Mol	Type	Chain	Res	Atoms	RSCC	RSR	B-factors(\AA^2)	Q<0.9
4	6A5	B	2	28/28	0.93	0.16	30,40,52,61	0
3	NAG	B	851	14/15	0.97	0.08	30,39,42,42	0
3	NAG	A	851	14/15	0.97	0.07	39,41,45,45	0

The following is a graphical depiction of the model fit to experimental electron density of all instances of the Ligand of Interest. In addition, ligands with molecular weight > 250 and outliers as shown on the geometry validation Tables will also be included. Each fit is shown from different orientation to approximate a three-dimensional view.





6.5 Other polymers [i](#)

There are no such residues in this entry.