



Full wwPDB X-ray Structure Validation Report ⓘ

Feb 14, 2024 – 08:52 PM EST

PDB ID : 3NA0
Title : Crystal structure of human CYP11A1 in complex with 20,22-dihydroxycholesterol
Authors : Strushkevich, N.V.; MacKenzie, F.; Tempel, W.; Botchkarev, A.; Arrowsmith, C.H.; Edwards, A.M.; Bountra, C.; Weigelt, J.U.; Park, H.; Structural Genomics Consortium (SGC)
Deposited on : 2010-05-31
Resolution : 2.50 Å(reported)

This is a Full wwPDB X-ray Structure Validation Report for a publicly released PDB entry.

We welcome your comments at validation@mail.wwpdb.org

A user guide is available at

<https://www.wwpdb.org/validation/2017/XrayValidationReportHelp>

with specific help available everywhere you see the ⓘ symbol.

The types of validation reports are described at

<http://www.wwpdb.org/validation/2017/FAQs#types>.

The following versions of software and data (see [references](#) ①) were used in the production of this report:

MolProbity : 4.02b-467
Mogul : 1.8.5 (274361), CSD as541be (2020)
Xtrriage (Phenix) : 1.13
EDS : 2.36
buster-report : 1.1.7 (2018)
Percentile statistics : 20191225.v01 (using entries in the PDB archive December 25th 2019)
Refmac : 5.8.0158
CCP4 : 7.0.044 (Gargrove)
Ideal geometry (proteins) : Engh & Huber (2001)
Ideal geometry (DNA, RNA) : Parkinson et al. (1996)
Validation Pipeline (wwPDB-VP) : 2.36

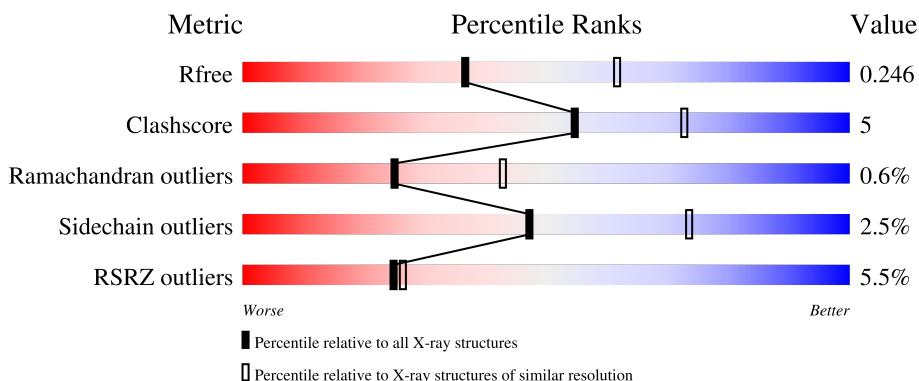
1 Overall quality at a glance

The following experimental techniques were used to determine the structure:

X-RAY DIFFRACTION

The reported resolution of this entry is 2.50 Å.

Percentile scores (ranging between 0-100) for global validation metrics of the entry are shown in the following graphic. The table shows the number of entries on which the scores are based.



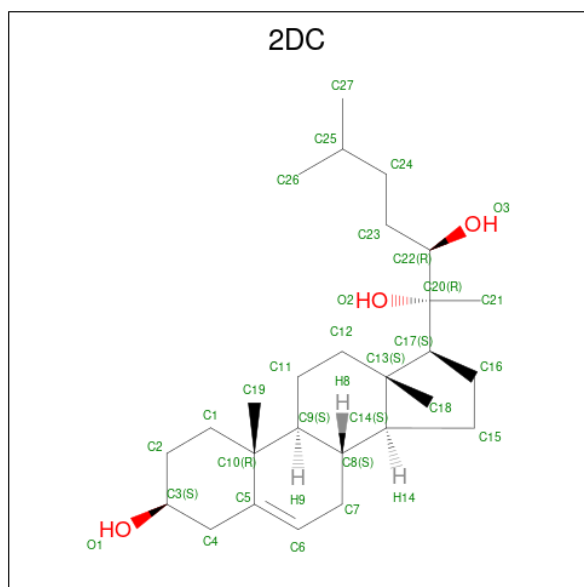
Metric	Whole archive (#Entries)	Similar resolution (#Entries, resolution range(Å))
R_{free}	130704	4661 (2.50-2.50)
Clashscore	141614	5346 (2.50-2.50)
Ramachandran outliers	138981	5231 (2.50-2.50)
Sidechain outliers	138945	5233 (2.50-2.50)
RSRZ outliers	127900	4559 (2.50-2.50)

The table below summarises the geometric issues observed across the polymeric chains and their fit to the electron density. The red, orange, yellow and green segments of the lower bar indicate the fraction of residues that contain outliers for ≥ 3 , 2, 1 and 0 types of geometric quality criteria respectively. A grey segment represents the fraction of residues that are not modelled. The numeric value for each fraction is indicated below the corresponding segment, with a dot representing fractions $\leq 5\%$. The upper red bar (where present) indicates the fraction of residues that have poor fit to the electron density. The numeric value is given above the bar.

Mol	Chain	Length	Quality of chain
1	A	471	
1	B	471	
2	C	68	
2	D	68	

Mol	Chain	Residues	Atoms				ZeroOcc	AltConf	
3	A	1	Total	C	Fe	N	O	0	0
			43	34	1	4	4		
3	B	1	Total	C	Fe	N	O	0	0
			43	34	1	4	4		

- Molecule 4 is (3 α ,8 α ,22R)-cholest-5-ene-3,20,22-triol (three-letter code: 2DC) (formula: C₂₇H₄₆O₃).



Mol	Chain	Residues	Atoms			ZeroOcc	AltConf
4	A	1	Total	C	O	0	0
			30	27	3		
4	B	1	Total	C	O	0	0
			30	27	3		

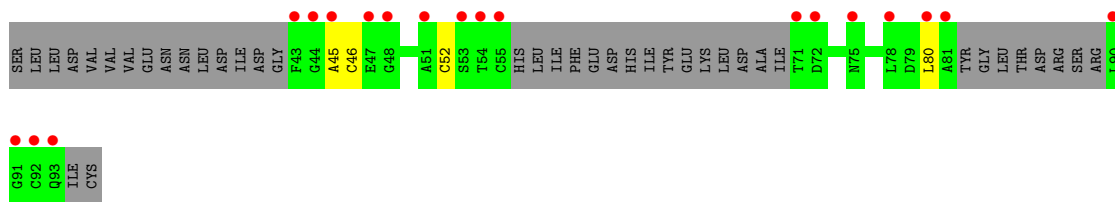
- Molecule 5 is FE2/S2 (INORGANIC) CLUSTER (three-letter code: FES) (formula: Fe₂S₂).



Mol	Chain	Residues	Atoms			ZeroOcc	AltConf
5	C	1	Total	Fe	S	0	0
			4	2	2		
5	D	1	Total	Fe	S	0	0
			4	2	2		

- Molecule 6 is water.

Mol	Chain	Residues	Atoms		ZeroOcc	AltConf
6	A	152	Total	O	0	0
			152	152		
6	B	138	Total	O	0	0
			138	138		
6	D	1	Total	O	0	0
			1	1		



4 Data and refinement statistics i

Property	Value	Source
Space group	P 1 21 1	Depositor
Cell constants a, b, c, α , β , γ	82.81Å 114.72Å 85.72Å 90.00° 101.78° 90.00°	Depositor
Resolution (Å)	50.00 – 2.50 47.35 – 2.50	Depositor EDS
% Data completeness (in resolution range)	98.2 (50.00-2.50) 98.2 (47.35-2.50)	Depositor EDS
R_{merge}	0.10	Depositor
R_{sym}	(Not available)	Depositor
$\langle I/\sigma(I) \rangle$ ¹	1.68 (at 2.48Å)	Xtrriage
Refinement program	REFMAC 5.5.0102	Depositor
R, R_{free}	0.201 , 0.245 0.202 , 0.246	Depositor DCC
R_{free} test set	2718 reflections (5.07%)	wwPDB-VP
Wilson B-factor (Å ²)	28.5	Xtrriage
Anisotropy	0.049	Xtrriage
Bulk solvent k_{sol} (e/Å ³), B_{sol} (Å ²)	0.35 , 40.4	EDS
L-test for twinning ²	$\langle L \rangle = 0.50$, $\langle L^2 \rangle = 0.33$	Xtrriage
Estimated twinning fraction	0.220 for l,-k,h	Xtrriage
F_o, F_c correlation	0.93	EDS
Total number of atoms	8583	wwPDB-VP
Average B, all atoms (Å ²)	29.0	wwPDB-VP

Xtrriage's analysis on translational NCS is as follows: *The largest off-origin peak in the Patterson function is 4.40% of the height of the origin peak. No significant pseudotranslation is detected.*

¹Intensities estimated from amplitudes.

²Theoretical values of $\langle |L| \rangle$, $\langle L^2 \rangle$ for acentric reflections are 0.5, 0.333 respectively for untwinned datasets, and 0.375, 0.2 for perfectly twinned datasets.

5 Model quality [i](#)

5.1 Standard geometry [i](#)

Bond lengths and bond angles in the following residue types are not validated in this section: HEM, FES, 2DC

The Z score for a bond length (or angle) is the number of standard deviations the observed value is removed from the expected value. A bond length (or angle) with $|Z| > 5$ is considered an outlier worth inspection. RMSZ is the root-mean-square of all Z scores of the bond lengths (or angles).

Mol	Chain	Bond lengths		Bond angles	
		RMSZ	# Z >5	RMSZ	# Z >5
1	A	0.50	0/3982	0.59	1/5403 (0.0%)
1	B	0.49	0/3982	0.60	1/5403 (0.0%)
2	C	0.48	0/195	0.64	0/259
2	D	0.48	0/195	0.63	0/259
All	All	0.49	0/8354	0.60	2/11324 (0.0%)

Chiral center outliers are detected by calculating the chiral volume of a chiral center and verifying if the center is modelled as a planar moiety or with the opposite hand. A planarity outlier is detected by checking planarity of atoms in a peptide group, atoms in a mainchain group or atoms of a sidechain that are expected to be planar.

Mol	Chain	#Chirality outliers	#Planarity outliers
1	A	0	1

There are no bond length outliers.

All (2) bond angle outliers are listed below:

Mol	Chain	Res	Type	Atoms	Z	Observed(°)	Ideal(°)
1	A	499	LEU	CA-CB-CG	-5.52	102.60	115.30
1	B	499	LEU	CA-CB-CG	-5.46	102.75	115.30

There are no chirality outliers.

All (1) planarity outliers are listed below:

Mol	Chain	Res	Type	Group
1	A	192	GLY	Peptide

5.2 Too-close contacts [i](#)

In the following table, the Non-H and H(model) columns list the number of non-hydrogen atoms and hydrogen atoms in the chain respectively. The H(added) column lists the number of hydrogen atoms added and optimized by MolProbity. The Clashes column lists the number of clashes within the asymmetric unit, whereas Symm-Clashes lists symmetry-related clashes.

Mol	Chain	Non-H	H(model)	H(added)	Clashes	Symm-Clashes
1	A	3872	0	3842	45	0
1	B	3872	0	3842	35	0
2	C	197	0	169	6	0
2	D	197	0	169	6	0
3	A	43	0	30	2	0
3	B	43	0	30	2	0
4	A	30	0	46	0	0
4	B	30	0	46	0	0
5	C	4	0	0	0	0
5	D	4	0	0	1	0
6	A	152	0	0	3	0
6	B	138	0	0	1	0
6	D	1	0	0	0	0
All	All	8583	0	8174	86	0

The all-atom clashscore is defined as the number of clashes found per 1000 atoms (including hydrogen atoms). The all-atom clashscore for this structure is 5.

All (86) close contacts within the same asymmetric unit are listed below, sorted by their clash magnitude.

Atom-1	Atom-2	Interatomic distance (Å)	Clash overlap (Å)
1:A:247:MET:HE3	1:A:263:TRP:HB2	1.38	1.04
1:B:331:THR:HG21	1:B:471:GLU:OE2	1.70	0.92
1:A:349:GLN:HE21	1:A:353:ARG:HH22	1.22	0.88
1:A:457:TRP:HD1	2:C:80:LEU:HD13	1.43	0.82
1:B:349:GLN:HE21	1:B:353:ARG:HH22	1.25	0.82
1:A:349:GLN:HE22	1:A:485:VAL:H	1.29	0.79
1:B:71:THR:HG22	6:B:567:HOH:O	1.82	0.78
1:B:349:GLN:HE22	1:B:485:VAL:H	1.27	0.77
1:A:457:TRP:CD1	2:C:80:LEU:HD13	2.20	0.76
1:B:457:TRP:HD1	2:D:80:LEU:HD13	1.53	0.72
1:A:386:ARG:NH2	1:A:432:PRO:O	2.25	0.70
3:A:601:HEM:HBB2	3:A:601:HEM:HMB2	1.75	0.69
1:B:428:PHE:O	1:B:451:ARG:NH1	2.26	0.68
1:A:311:MET:HE2	1:A:315:ASP:HB3	1.75	0.68

Continued on next page...

Continued from previous page...

Atom-1	Atom-2	Interatomic distance (Å)	Clash overlap (Å)
1:A:247:MET:CE	1:A:255:PHE:HB3	2.25	0.67
2:C:74:GLU:HG3	2:C:90:LEU:HD12	1.77	0.66
1:B:457:TRP:CD1	2:D:80:LEU:HD13	2.31	0.65
1:B:488:GLN:O	1:B:490:LEU:N	2.30	0.64
3:B:601:HEM:HBB2	3:B:601:HEM:HMB2	1.88	0.56
1:A:155:ASN:HB3	2:C:49:THR:HG21	1.87	0.56
1:A:429:PHE:CZ	1:A:451:ARG:HD2	2.40	0.56
1:A:186:ILE:HG23	1:A:193:ASN:H	1.71	0.55
1:A:247:MET:HE3	1:A:263:TRP:CB	2.26	0.55
1:A:295:HIS:HB2	1:A:299:ARG:HD2	1.90	0.54
1:B:120:ARG:NH2	1:B:460:ARG:HG2	2.23	0.54
1:B:457:TRP:HE1	2:D:80:LEU:HB3	1.73	0.53
1:A:247:MET:HE1	1:A:255:PHE:CD1	2.45	0.52
1:B:461:GLN:NE2	1:B:465:ARG:HH11	2.07	0.52
1:A:247:MET:HE2	1:A:255:PHE:HB3	1.92	0.51
2:D:52:CYS:O	5:D:150:FES:S1	2.69	0.51
1:A:411:ALA:O	1:A:412:LYS:HB2	2.10	0.50
1:A:349:GLN:NE2	1:A:353:ARG:HH22	2.02	0.50
3:A:601:HEM:HBB2	3:A:601:HEM:CMB	2.42	0.50
1:B:417:VAL:HG12	1:B:419:ILE:HD12	1.94	0.50
1:B:429:PHE:CZ	1:B:451:ARG:HB3	2.47	0.49
1:A:392:VAL:HG13	1:A:501:LEU:HD21	1.94	0.49
1:A:295:HIS:HB3	1:A:297:ASP:OD1	2.13	0.48
1:A:461:GLN:NE2	1:A:465:ARG:HH11	2.11	0.48
1:B:411:ALA:O	1:B:412:LYS:HB2	2.13	0.48
1:B:450:PHE:HA	2:D:80:LEU:CD2	2.43	0.47
1:A:244:SER:HB3	1:A:499:LEU:HD13	1.95	0.47
1:A:484:ARG:HH21	1:A:514:PHE:HE1	1.62	0.47
1:B:233:PHE:CE2	1:B:237:ILE:HD11	2.51	0.46
1:A:249:ASN:ND2	6:A:640:HOH:O	2.41	0.46
1:B:129:TYR:CZ	1:B:270:TRP:HB3	2.52	0.45
1:A:311:MET:HE1	1:A:319:ASN:HD22	1.81	0.45
1:A:383:GLU:CD	1:A:386:ARG:NH1	2.70	0.45
1:A:450:PHE:HA	2:C:80:LEU:CD2	2.46	0.45
1:B:444:ASP:HB3	1:B:447:ILE:HD12	1.99	0.45
1:B:461:GLN:HE22	1:B:465:ARG:HH11	1.65	0.45
1:A:165:LYS:NZ	6:A:541:HOH:O	2.50	0.44
1:B:459:VAL:HG11	2:D:45:ALA:HB3	1.99	0.44
1:B:353:ARG:NH2	1:B:483:PHE:O	2.49	0.44
1:A:341:GLU:OE2	1:A:344:ARG:NH1	2.50	0.44
1:A:244:SER:CB	1:A:499:LEU:HD13	2.47	0.44

Continued on next page...

Continued from previous page...

Atom-1	Atom-2	Interatomic distance (Å)	Clash overlap (Å)
1:B:126:TRP:CZ2	1:B:499:LEU:HD22	2.53	0.44
1:B:429:PHE:HZ	1:B:451:ARG:HB3	1.83	0.44
1:A:278:ASP:OD1	1:A:317:LYS:HD3	2.18	0.43
1:B:252:PRO:HA	1:B:255:PHE:CE2	2.52	0.43
1:A:129:TYR:CE2	1:A:270:TRP:HB3	2.54	0.43
1:A:139:VAL:HG22	1:A:147:TRP:CD1	2.53	0.43
1:A:208:GLU:OE2	1:A:219:GLN:HB2	2.18	0.43
1:A:247:MET:HE1	1:A:255:PHE:CG	2.53	0.43
1:B:349:GLN:NE2	1:B:353:ARG:HH22	2.05	0.43
1:A:186:ILE:HG23	1:A:193:ASN:N	2.34	0.43
1:A:233:PHE:CE2	1:A:237:ILE:HD11	2.54	0.42
1:A:129:TYR:CE2	1:A:135:ARG:HG3	2.54	0.42
1:A:129:TYR:CZ	1:A:270:TRP:HB3	2.54	0.42
1:B:246:PRO:O	1:B:259:ARG:HD2	2.19	0.42
1:B:327:GLY:HA2	3:B:601:HEM:HMC2	2.02	0.42
1:B:341:GLU:OE2	1:B:344:ARG:NH1	2.53	0.42
1:A:123:ILE:HA	1:A:124:PRO:HD3	1.90	0.42
1:B:53:SER:HB2	1:B:90:ARG:HG3	2.02	0.42
1:A:247:MET:CE	1:A:255:PHE:CG	3.03	0.41
1:B:123:ILE:HD13	1:B:499:LEU:HD21	2.01	0.41
1:B:208:GLU:OE2	1:B:219:GLN:HB2	2.21	0.41
2:C:74:GLU:HG3	2:C:90:LEU:CD1	2.49	0.41
1:B:129:TYR:CE2	1:B:270:TRP:HB3	2.55	0.41
1:A:195:SER:HA	1:A:509:PHE:O	2.22	0.40
1:B:252:PRO:HA	1:B:255:PHE:CZ	2.56	0.40
1:A:344:ARG:HD2	6:A:606:HOH:O	2.21	0.40
1:B:448:THR:HA	1:B:451:ARG:HG3	2.04	0.40
1:A:251:PRO:HD2	1:A:254:LEU:HD12	2.03	0.40
1:A:295:HIS:CB	1:A:299:ARG:HD2	2.50	0.40
1:A:353:ARG:NH2	1:A:483:PHE:O	2.55	0.40
1:B:123:ILE:HA	1:B:124:PRO:HD3	1.89	0.40

There are no symmetry-related clashes.

5.3 Torsion angles

5.3.1 Protein backbone

In the following table, the Percentiles column shows the percent Ramachandran outliers of the chain as a percentile score with respect to all X-ray entries followed by that with respect to entries of similar resolution.

The Analysed column shows the number of residues for which the backbone conformation was analysed, and the total number of residues.

Mol	Chain	Analysed	Favoured	Allowed	Outliers	Percentiles	
1	A	468/471 (99%)	450 (96%)	16 (3%)	2 (0%)	34	54
1	B	468/471 (99%)	447 (96%)	17 (4%)	4 (1%)	17	31
2	C	22/68 (32%)	18 (82%)	4 (18%)	0	100	100
2	D	22/68 (32%)	20 (91%)	2 (9%)	0	100	100
All	All	980/1078 (91%)	935 (95%)	39 (4%)	6 (1%)	25	43

All (6) Ramachandran outliers are listed below:

Mol	Chain	Res	Type
1	A	292	GLY
1	B	292	GLY
1	B	488	GLN
1	B	489	HIS
1	A	144	SER
1	B	442	SER

5.3.2 Protein sidechains [i](#)

In the following table, the Percentiles column shows the percent sidechain outliers of the chain as a percentile score with respect to all X-ray entries followed by that with respect to entries of similar resolution.

The Analysed column shows the number of residues for which the sidechain conformation was analysed, and the total number of residues.

Mol	Chain	Analysed	Rotameric	Outliers	Percentiles	
1	A	418/419 (100%)	410 (98%)	8 (2%)	57	80
1	B	418/419 (100%)	407 (97%)	11 (3%)	46	72
2	C	22/59 (37%)	20 (91%)	2 (9%)	9	18
2	D	22/59 (37%)	21 (96%)	1 (4%)	27	51
All	All	880/956 (92%)	858 (98%)	22 (2%)	47	73

All (22) residues with a non-rotameric sidechain are listed below:

Mol	Chain	Res	Type
1	A	289	ARG
1	A	317	LYS

Continued on next page...

Continued from previous page...

Mol	Chain	Res	Type
1	A	347	LYS
1	A	392	VAL
1	A	408	MET
1	A	446	ASN
1	A	447	ILE
1	A	499	LEU
1	B	71	THR
1	B	158	VAL
1	B	276	LYS
1	B	317	LYS
1	B	331	THR
1	B	377	LEU
1	B	392	VAL
1	B	395	GLN
1	B	445	LYS
1	B	490	LEU
1	B	499	LEU
2	C	49	THR
2	C	78	LEU
2	D	46	CYS

Sometimes sidechains can be flipped to improve hydrogen bonding and reduce clashes. All (13) such sidechains are listed below:

Mol	Chain	Res	Type
1	A	295	HIS
1	A	338	HIS
1	A	349	GLN
1	A	416	GLN
1	A	434	ASN
1	A	461	GLN
1	A	488	GLN
1	B	72	HIS
1	B	338	HIS
1	B	349	GLN
1	B	434	ASN
1	B	461	GLN
1	B	488	GLN

5.3.3 RNA

There are no RNA molecules in this entry.

5.4 Non-standard residues in protein, DNA, RNA chains [i](#)

There are no non-standard protein/DNA/RNA residues in this entry.

5.5 Carbohydrates [i](#)

There are no monosaccharides in this entry.

5.6 Ligand geometry [i](#)

6 ligands are modelled in this entry.

In the following table, the Counts columns list the number of bonds (or angles) for which Mogul statistics could be retrieved, the number of bonds (or angles) that are observed in the model and the number of bonds (or angles) that are defined in the Chemical Component Dictionary. The Link column lists molecule types, if any, to which the group is linked. The Z score for a bond length (or angle) is the number of standard deviations the observed value is removed from the expected value. A bond length (or angle) with $|Z| > 2$ is considered an outlier worth inspection. RMSZ is the root-mean-square of all Z scores of the bond lengths (or angles).

Mol	Type	Chain	Res	Link	Bond lengths			Bond angles		
					Counts	RMSZ	# Z > 2	Counts	RMSZ	# Z > 2
3	HEM	B	601	1	41,50,50	1.95	7 (17%)	45,82,82	1.75	9 (20%)
3	HEM	A	601	1	41,50,50	1.98	7 (17%)	45,82,82	1.99	11 (24%)
5	FES	C	150	2	0,4,4	-	-	-	-	-
4	2DC	B	602	-	33,33,33	0.58	0	53,53,53	1.10	3 (5%)
5	FES	D	150	2	0,4,4	-	-	-	-	-
4	2DC	A	602	-	33,33,33	0.64	0	53,53,53	0.95	5 (9%)

In the following table, the Chirals column lists the number of chiral outliers, the number of chiral centers analysed, the number of these observed in the model and the number defined in the Chemical Component Dictionary. Similar counts are reported in the Torsion and Rings columns. '-' means no outliers of that kind were identified.

Mol	Type	Chain	Res	Link	Chirals	Torsions	Rings
3	HEM	B	601	1	-	1/12/54/54	-
3	HEM	A	601	1	-	0/12/54/54	-
5	FES	C	150	2	-	-	0/1/1/1
4	2DC	B	602	-	-	0/17/75/75	0/4/4/4
5	FES	D	150	2	-	-	0/1/1/1
4	2DC	A	602	-	-	0/17/75/75	0/4/4/4

All (14) bond length outliers are listed below:

Mol	Chain	Res	Type	Atoms	Z	Observed(Å)	Ideal(Å)
3	B	601	HEM	C3D-C2D	7.68	1.53	1.36
3	A	601	HEM	C3D-C2D	7.38	1.52	1.36
3	A	601	HEM	C3C-C2C	-4.84	1.33	1.40
3	B	601	HEM	C3C-C2C	-4.30	1.34	1.40
3	A	601	HEM	FE-ND	3.82	2.15	1.96
3	B	601	HEM	C3C-CAC	3.39	1.54	1.47
3	A	601	HEM	C3C-CAC	3.10	1.54	1.47
3	B	601	HEM	FE-ND	3.04	2.11	1.96
3	B	601	HEM	CAB-C3B	2.92	1.55	1.47
3	A	601	HEM	CAB-C3B	2.91	1.55	1.47
3	A	601	HEM	FE-NB	2.54	2.09	1.96
3	B	601	HEM	CMB-C2B	2.33	1.55	1.50
3	A	601	HEM	CMB-C2B	2.18	1.55	1.50
3	B	601	HEM	FE-NB	2.09	2.07	1.96

All (28) bond angle outliers are listed below:

Mol	Chain	Res	Type	Atoms	Z	Observed(°)	Ideal(°)
3	A	601	HEM	C4D-ND-C1D	6.97	112.27	105.07
3	B	601	HEM	C4D-ND-C1D	6.21	111.49	105.07
3	A	601	HEM	C4B-CHC-C1C	4.50	128.49	122.56
3	B	601	HEM	C4B-CHC-C1C	4.35	128.30	122.56
3	A	601	HEM	C4C-CHD-C1D	3.68	127.41	122.56
4	B	602	2DC	O2-C20-C22	-3.26	101.93	106.83
3	A	601	HEM	CBA-CAA-C2A	-3.19	107.17	112.62
3	A	601	HEM	C2C-C3C-C4C	3.18	109.12	106.90
3	A	601	HEM	CMD-C2D-C1D	3.15	129.84	125.04
3	B	601	HEM	CBA-CAA-C2A	-3.01	107.49	112.62
4	B	602	2DC	O2-C20-C17	2.78	113.23	108.85
3	A	601	HEM	CAD-C3D-C4D	2.78	129.51	124.66
3	A	601	HEM	C1B-NB-C4B	2.73	107.89	105.07
3	B	601	HEM	CMD-C2D-C1D	2.70	129.16	125.04
4	A	602	2DC	O2-C20-C17	2.56	112.88	108.85
3	A	601	HEM	CBD-CAD-C3D	-2.55	105.55	112.63
3	B	601	HEM	C1B-NB-C4B	2.52	107.68	105.07
3	B	601	HEM	CAD-C3D-C4D	2.48	129.00	124.66
3	B	601	HEM	C4C-CHD-C1D	2.36	125.67	122.56
4	A	602	2DC	C4-C5-C10	2.34	119.53	116.42
3	B	601	HEM	CBD-CAD-C3D	-2.26	106.34	112.63
4	B	602	2DC	C4-C5-C10	2.22	119.37	116.42
4	A	602	2DC	C4-C5-C6	-2.16	117.50	120.61
3	A	601	HEM	C3C-C4C-NC	-2.15	106.88	110.94
3	A	601	HEM	CMA-C3A-C4A	-2.07	125.29	128.46

Continued on next page...

Continued from previous page...

Mol	Chain	Res	Type	Atoms	Z	Observed(°)	Ideal(°)
4	A	602	2DC	O2-C20-C22	-2.05	103.75	106.83
4	A	602	2DC	C7-C8-C9	2.03	112.17	109.71
3	B	601	HEM	C2C-C3C-C4C	2.00	108.30	106.90

There are no chirality outliers.

All (1) torsion outliers are listed below:

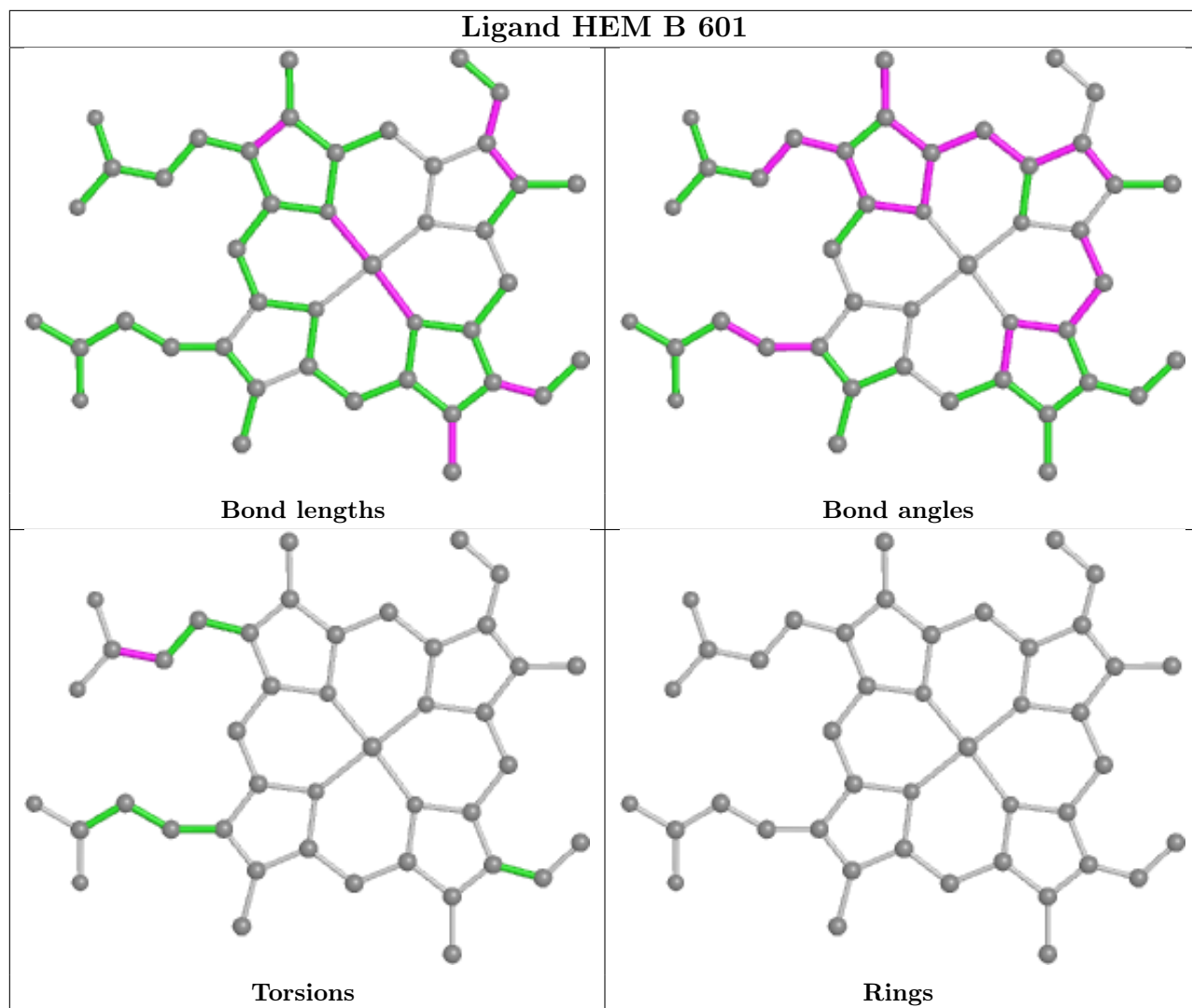
Mol	Chain	Res	Type	Atoms
3	B	601	HEM	CAD-CBD-CGD-O2D

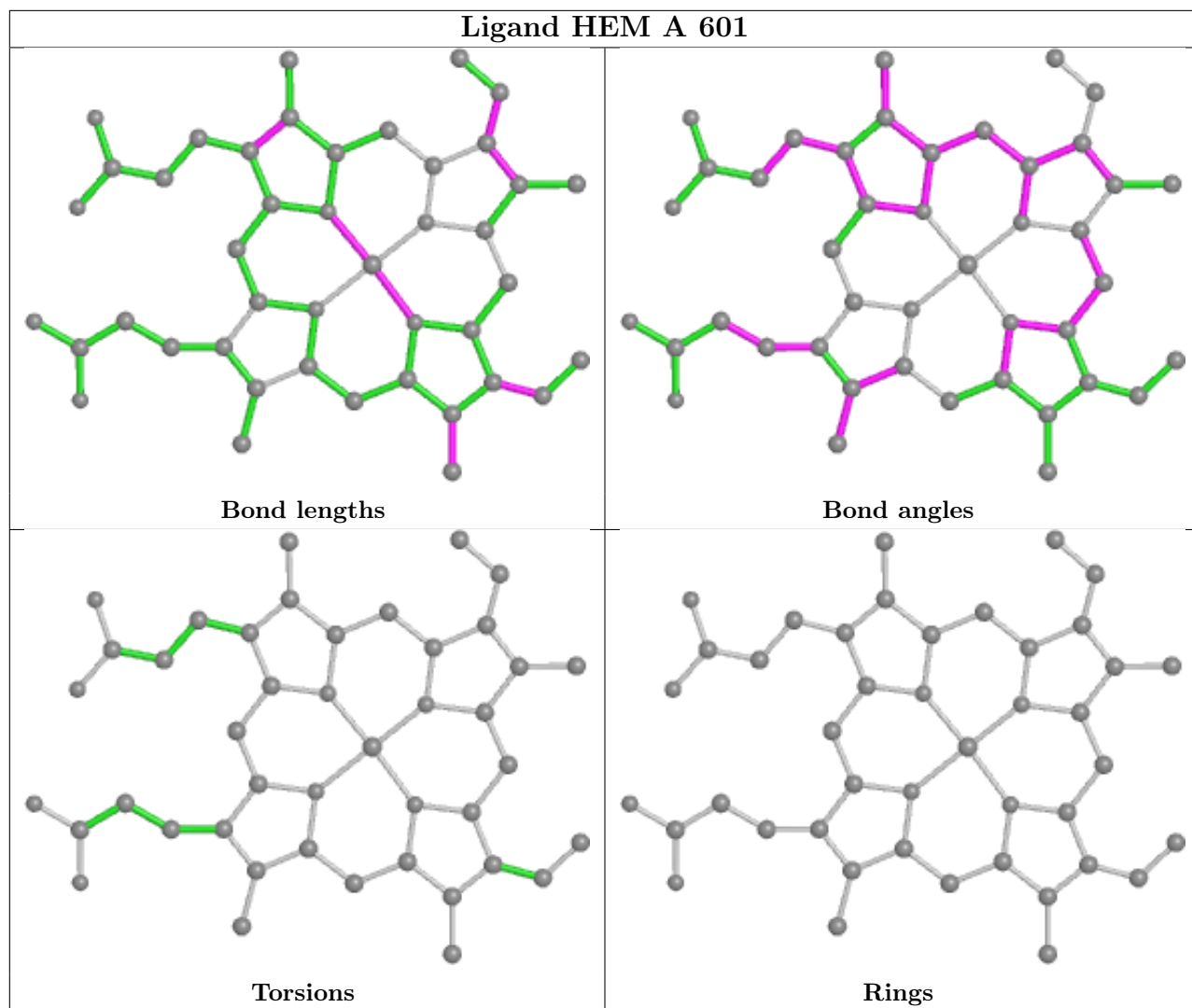
There are no ring outliers.

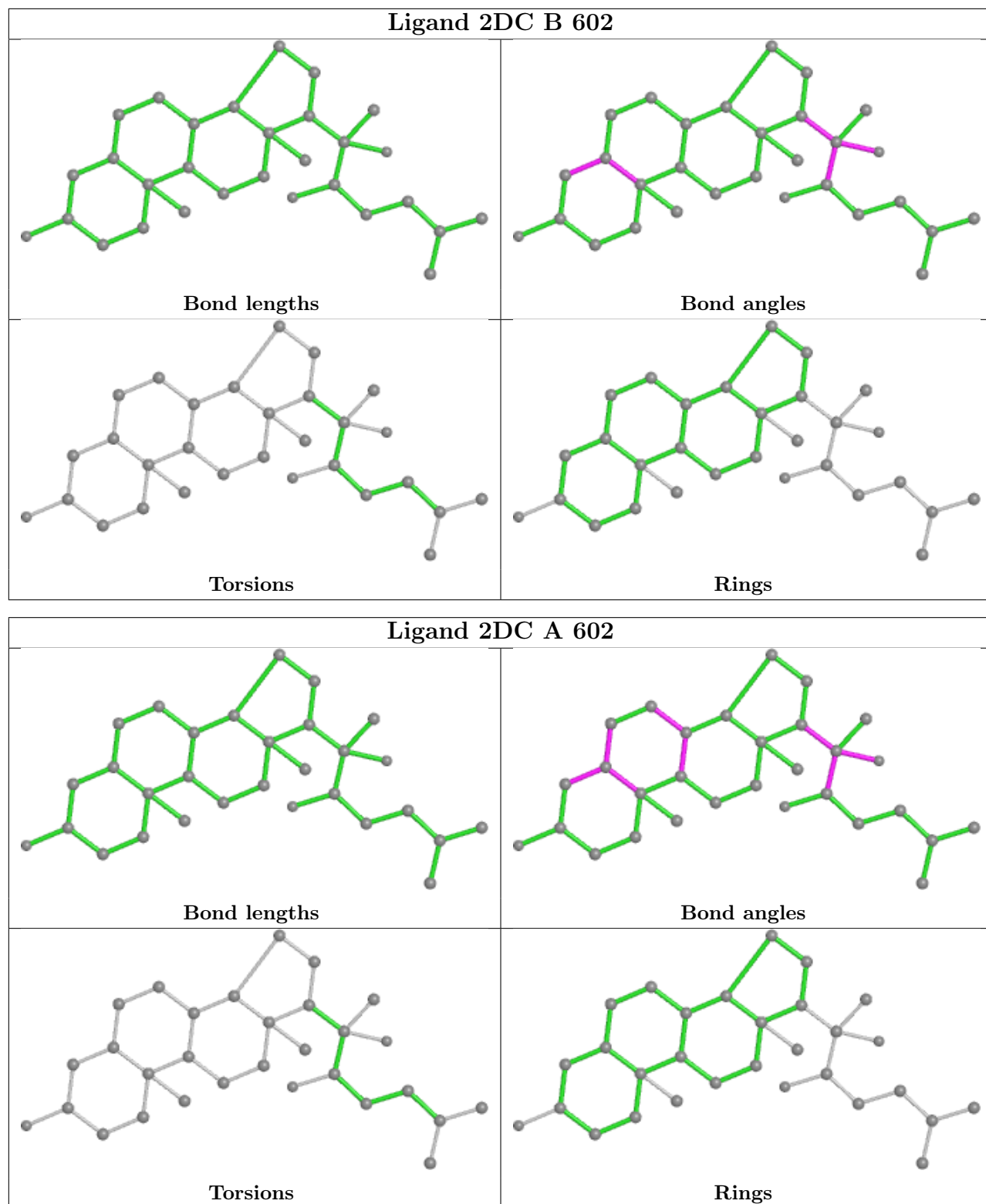
3 monomers are involved in 5 short contacts:

Mol	Chain	Res	Type	Clashes	Symm-Clashes
3	B	601	HEM	2	0
3	A	601	HEM	2	0
5	D	150	FES	1	0

The following is a two-dimensional graphical depiction of Mogul quality analysis of bond lengths, bond angles, torsion angles, and ring geometry for all instances of the Ligand of Interest. In addition, ligands with molecular weight > 250 and outliers as shown on the validation Tables will also be included. For torsion angles, if less than 5% of the Mogul distribution of torsion angles is within 10 degrees of the torsion angle in question, then that torsion angle is considered an outlier. Any bond that is central to one or more torsion angles identified as an outlier by Mogul will be highlighted in the graph. For rings, the root-mean-square deviation (RMSD) between the ring in question and similar rings identified by Mogul is calculated over all ring torsion angles. If the average RMSD is greater than 60 degrees and the minimal RMSD between the ring in question and any Mogul-identified rings is also greater than 60 degrees, then that ring is considered an outlier. The outliers are highlighted in purple. The color gray indicates Mogul did not find sufficient equivalents in the CSD to analyse the geometry.







5.7 Other polymers [\(i\)](#)

There are no such residues in this entry.

5.8 Polymer linkage issues

There are no chain breaks in this entry.

6 Fit of model and data

6.1 Protein, DNA and RNA chains

In the following table, the column labelled ‘#RSRZ > 2’ contains the number (and percentage) of RSRZ outliers, followed by percent RSRZ outliers for the chain as percentile scores relative to all X-ray entries and entries of similar resolution. The OWAB column contains the minimum, median, 95th percentile and maximum values of the occupancy-weighted average B-factor per residue. The column labelled ‘Q < 0.9’ lists the number of (and percentage) of residues with an average occupancy less than 0.9.

Mol	Chain	Analysed	<RSRZ>	#RSRZ>2	OWAB(Å ²)	Q<0.9
1	A	470/471 (99%)	-0.07	9 (1%) 66 69	14, 26, 41, 59	0
1	B	470/471 (99%)	-0.08	11 (2%) 60 63	14, 26, 41, 58	0
2	C	28/68 (41%)	2.81	16 (57%) 0 0	71, 72, 87, 88	0
2	D	28/68 (41%)	3.14	19 (67%) 0 0	69, 79, 84, 84	0
All	All	996/1078 (92%)	0.10	55 (5%) 25 26	14, 27, 70, 88	0

All (55) RSRZ outliers are listed below:

Mol	Chain	Res	Type	RSRZ
2	D	43	PHE	7.0
2	C	92	CYS	6.9
2	C	91	GLY	6.7
2	D	92	CYS	6.7
1	B	489	HIS	6.6
2	C	43	PHE	6.3
2	D	44	GLY	6.0
2	C	90	LEU	5.9
2	D	53	SER	5.6
2	D	91	GLY	5.5
1	A	293	SER	5.4
2	C	44	GLY	4.8
1	A	294	VAL	4.6
2	D	93	GLN	4.6
2	C	93	GLN	4.4
2	C	53	SER	4.1
1	B	443	LYS	4.0
1	B	490	LEU	3.9
2	C	71	THR	3.9
2	D	78	LEU	3.8
2	C	78	LEU	3.6

Continued on next page...

Continued from previous page...

Mol	Chain	Res	Type	RSRZ
2	D	54	THR	3.6
1	B	293	SER	3.6
1	A	443	LYS	3.5
2	D	90	LEU	3.5
2	C	55	CYS	3.4
2	D	45	ALA	3.4
1	A	292	GLY	3.3
2	C	54	THR	3.2
2	D	51	ALA	3.2
2	D	71	THR	3.2
2	D	55	CYS	3.0
2	D	72	ASP	3.0
2	D	75	ASN	2.9
2	D	48	GLY	2.8
1	B	308	ASP	2.6
1	A	296	HIS	2.6
1	B	47	PRO	2.5
2	C	75	ASN	2.4
2	C	48	GLY	2.3
1	B	292	GLY	2.3
1	A	406	ASP	2.3
2	C	47	GLU	2.3
1	A	308	ASP	2.3
1	A	67	ARG	2.3
2	D	81	ALA	2.3
1	B	296	HIS	2.2
1	B	225	VAL	2.2
1	A	47	PRO	2.2
1	B	294	VAL	2.2
2	D	80	LEU	2.2
2	D	47	GLU	2.2
2	C	49	THR	2.1
2	C	45	ALA	2.1
1	B	488	GLN	2.0

6.2 Non-standard residues in protein, DNA, RNA chains [\(i\)](#)

There are no non-standard protein/DNA/RNA residues in this entry.

6.3 Carbohydrates [i](#)

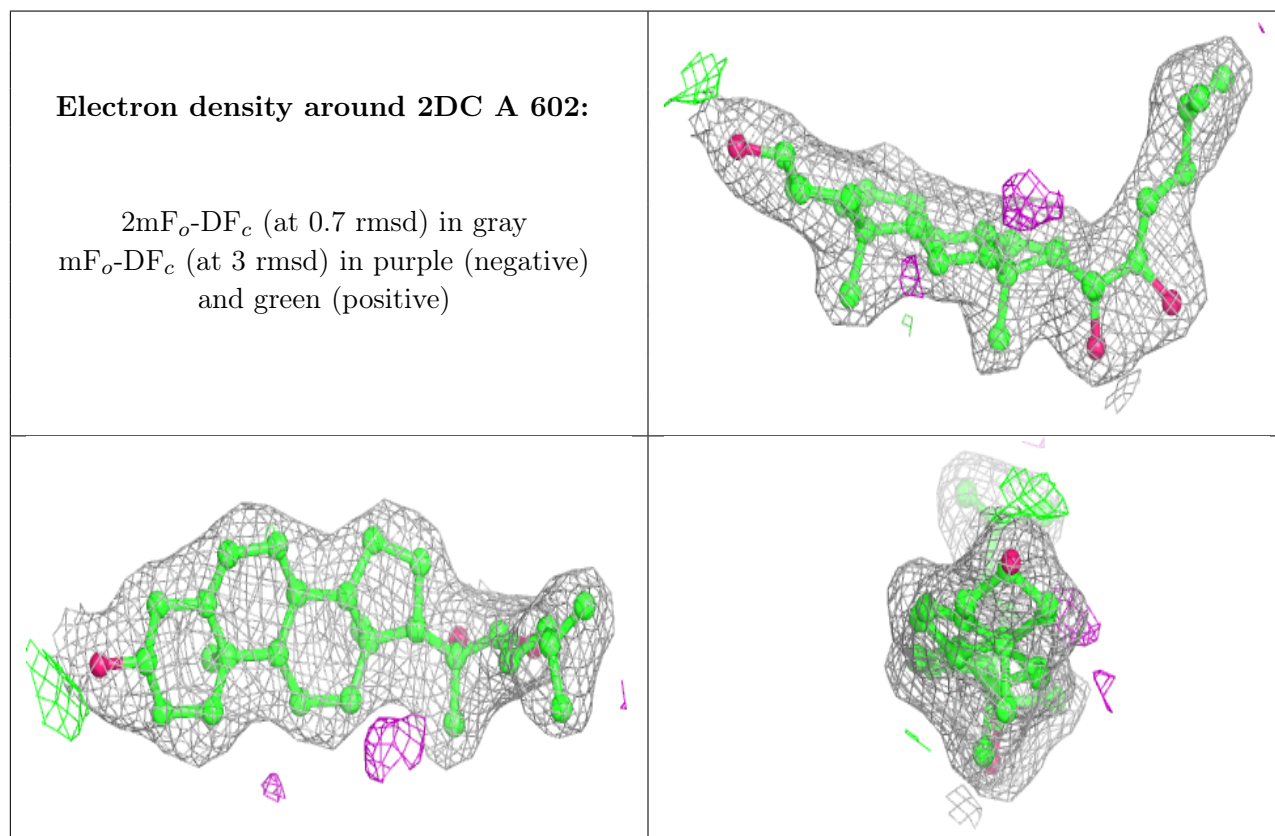
There are no monosaccharides in this entry.

6.4 Ligands [i](#)

In the following table, the Atoms column lists the number of modelled atoms in the group and the number defined in the chemical component dictionary. The B-factors column lists the minimum, median, 95th percentile and maximum values of B factors of atoms in the group. The column labelled 'Q< 0.9' lists the number of atoms with occupancy less than 0.9.

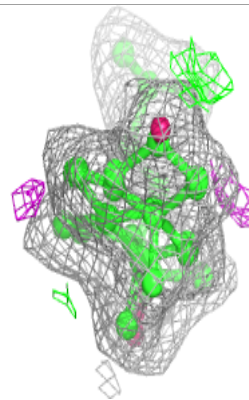
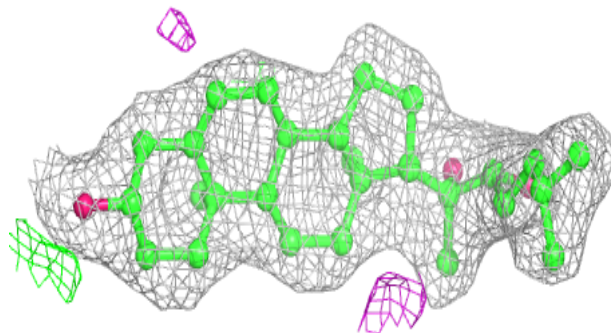
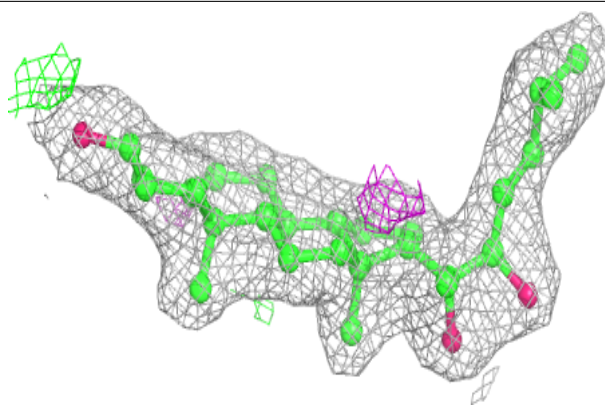
Mol	Type	Chain	Res	Atoms	RSCC	RSR	B-factors(Å ²)	Q<0.9
5	FES	C	150	4/4	0.89	0.14	82,83,84,84	0
5	FES	D	150	4/4	0.91	0.14	85,86,86,87	0
4	2DC	A	602	30/30	0.97	0.18	13,17,20,21	0
4	2DC	B	602	30/30	0.97	0.16	10,13,20,22	0
3	HEM	A	601	43/43	0.98	0.18	16,18,23,26	0
3	HEM	B	601	43/43	0.98	0.17	16,18,24,27	0

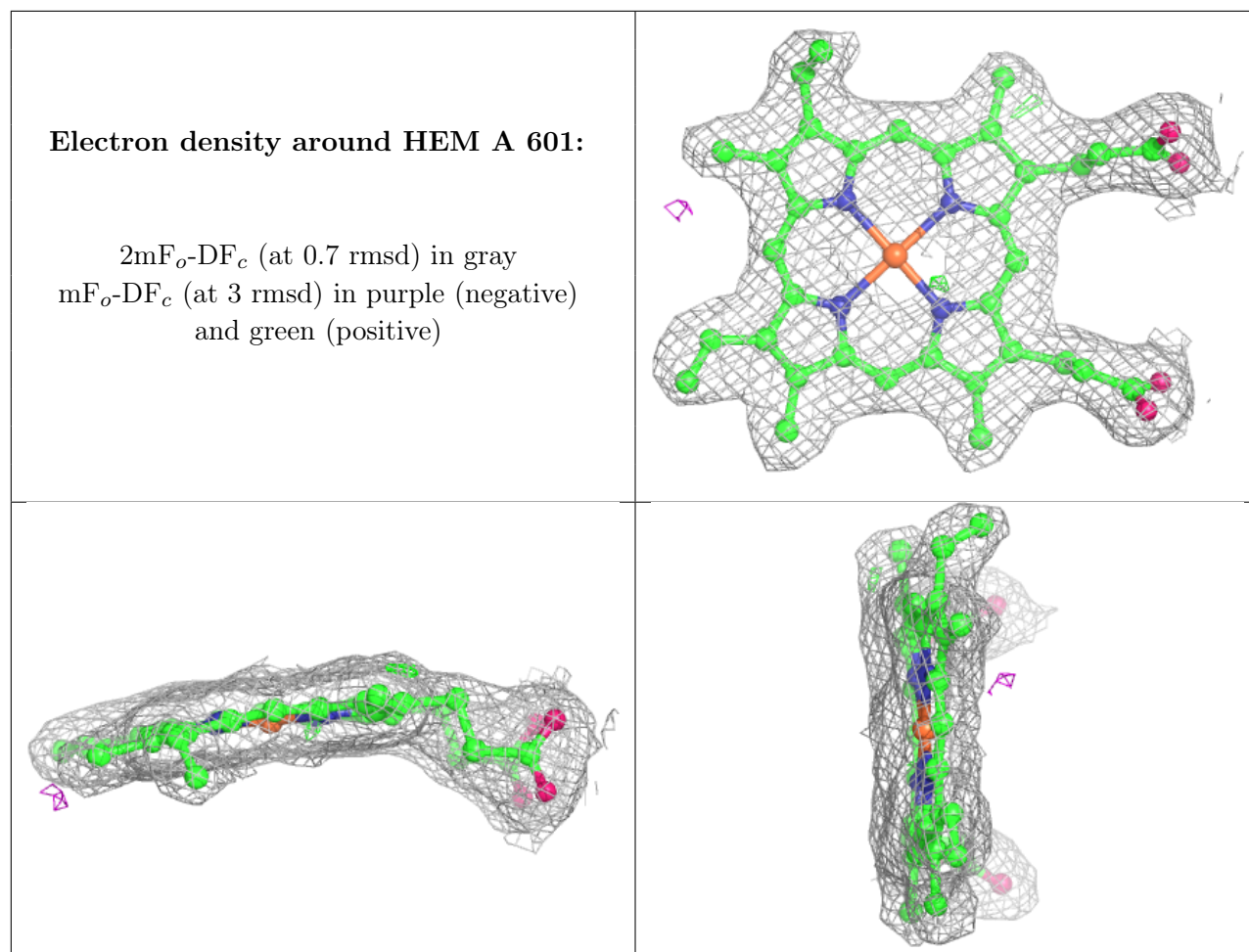
The following is a graphical depiction of the model fit to experimental electron density of all instances of the Ligand of Interest. In addition, ligands with molecular weight > 250 and outliers as shown on the geometry validation Tables will also be included. Each fit is shown from different orientation to approximate a three-dimensional view.

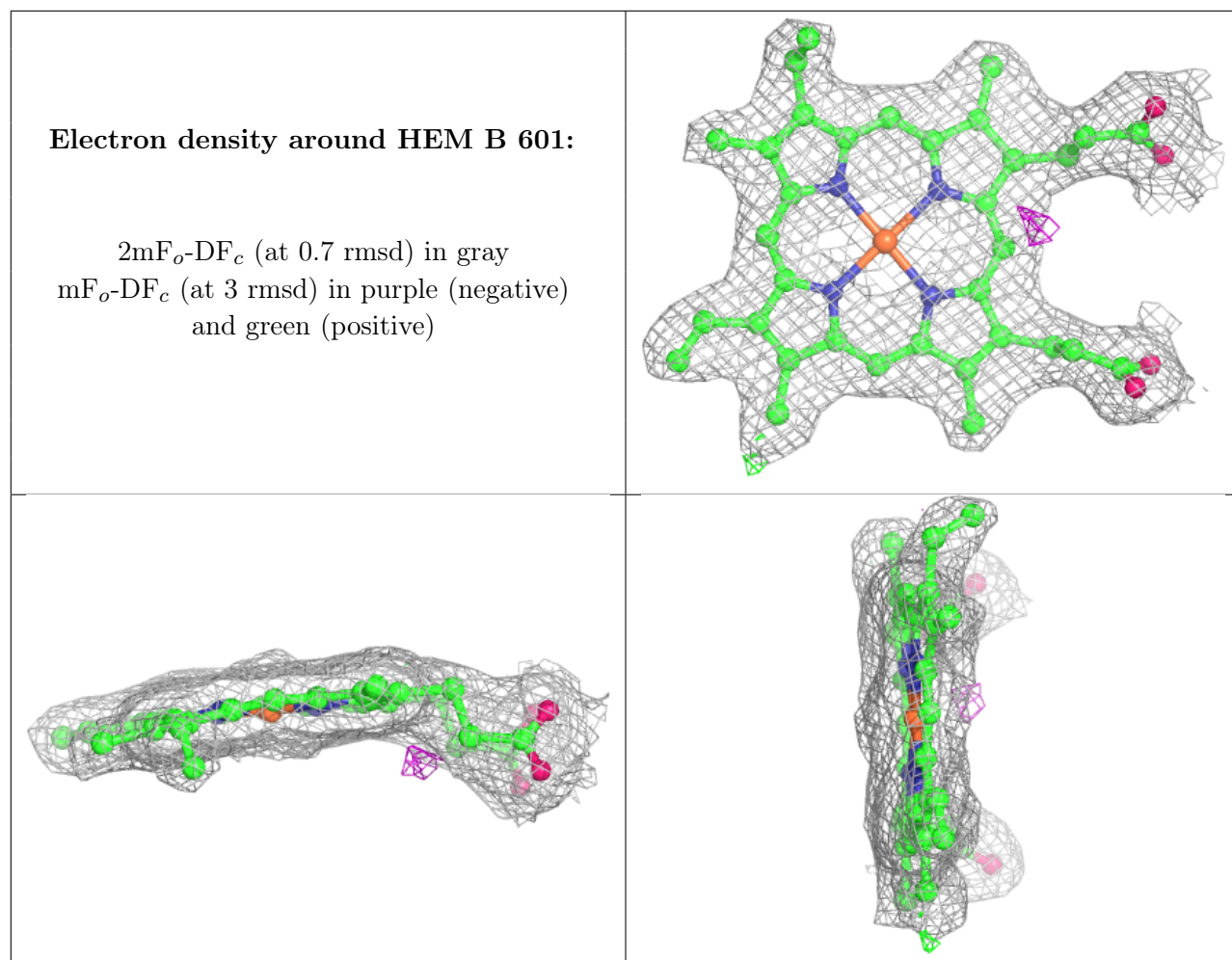


Electron density around 2DC B 602:

$2mF_o-DF_c$ (at 0.7 rmsd) in gray
 mF_o-DF_c (at 3 rmsd) in purple (negative)
and green (positive)







6.5 Other polymers [i](#)

There are no such residues in this entry.