



Full wwPDB X-ray Structure Validation Report ⓘ

Jun 17, 2024 – 11:03 AM EDT

PDB ID : 3LVU
Title : Crystal structure of ABC transporter, periplasmic substrate-binding protein SPO2066 from *Silicibacter pomeroyi*
Authors : Chang, C.; Chhor, G.; Clancy, S.; Joachimiak, A.; Midwest Center for Structural Genomics (MCSG)
Deposited on : 2010-02-22
Resolution : 1.79 Å(reported)

This is a Full wwPDB X-ray Structure Validation Report for a publicly released PDB entry.

We welcome your comments at validation@mail.wwpdb.org

A user guide is available at

<https://www.wwpdb.org/validation/2017/XrayValidationReportHelp>

with specific help available everywhere you see the ⓘ symbol.

The types of validation reports are described at

<http://www.wwpdb.org/validation/2017/FAQs#types>.

The following versions of software and data (see [references ⓘ](#)) were used in the production of this report:

MolProbity : 4.02b-467
Mogul : 2022.3.0, CSD as543be (2022)
Xtriage (Phenix) : 1.20.1
EDS : 2.37.1
Percentile statistics : 20191225.v01 (using entries in the PDB archive December 25th 2019)
Refmac : 5.8.0158
CCP4 : 7.0.044 (Gargrove)
Ideal geometry (proteins) : Engh & Huber (2001)
Ideal geometry (DNA, RNA) : Parkinson et al. (1996)
Validation Pipeline (wwPDB-VP) : 2.37.1

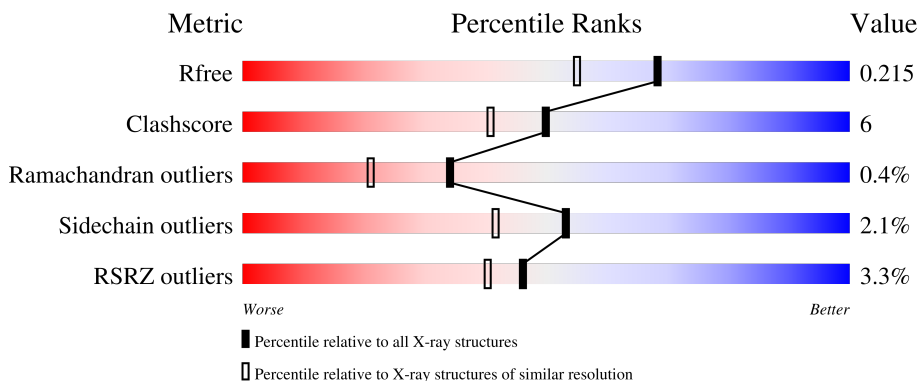
1 Overall quality at a glance i

The following experimental techniques were used to determine the structure:

X-RAY DIFFRACTION

The reported resolution of this entry is 1.79 Å.

Percentile scores (ranging between 0-100) for global validation metrics of the entry are shown in the following graphic. The table shows the number of entries on which the scores are based.



Metric	Whole archive (#Entries)	Similar resolution (#Entries, resolution range(Å))
R_{free}	130704	5950 (1.80-1.80)
Clashscore	141614	6793 (1.80-1.80)
Ramachandran outliers	138981	6697 (1.80-1.80)
Sidechain outliers	138945	6696 (1.80-1.80)
RSRZ outliers	127900	5850 (1.80-1.80)

The table below summarises the geometric issues observed across the polymeric chains and their fit to the electron density. The red, orange, yellow and green segments of the lower bar indicate the fraction of residues that contain outliers for ≥ 3 , 2, 1 and 0 types of geometric quality criteria respectively. A grey segment represents the fraction of residues that are not modelled. The numeric value for each fraction is indicated below the corresponding segment, with a dot representing fractions $\leq 5\%$. The upper red bar (where present) indicates the fraction of residues that have poor fit to the electron density. The numeric value is given above the bar.

Mol	Chain	Length	Quality of chain
1	A	258	 3% 91% 8%
1	B	258	 2% 87% 11%
1	C	258	 % 90% 9%
1	D	258	 6% 88% 11%

The following table lists non-polymeric compounds, carbohydrate monomers and non-standard

residues in protein, DNA, RNA chains that are outliers for geometric or electron-density-fit criteria:

Mol	Type	Chain	Res	Chirality	Geometry	Clashes	Electron density
4	EDO	B	605	-	-	X	-

2 Entry composition [i](#)

There are 6 unique types of molecules in this entry. The entry contains 9093 atoms, of which 0 are hydrogens and 0 are deuteriums.

In the tables below, the ZeroOcc column contains the number of atoms modelled with zero occupancy, the AltConf column contains the number of residues with at least one atom in alternate conformation and the Trace column contains the number of residues modelled with at most 2 atoms.

- Molecule 1 is a protein called ABC transporter, periplasmic substrate-binding protein.

Mol	Chain	Residues	Atoms					ZeroOcc	AltConf	Trace
			Total	C	N	O	Se			
1	A	258	2064	1290	379	388	7	0	9	0
1	B	257	2110	1315	392	397	6	0	13	0
1	C	258	2066	1292	378	390	6	0	8	0
1	D	258	2051	1282	375	388	6	0	6	0

There are 12 discrepancies between the modelled and reference sequences:

Chain	Residue	Modelled	Actual	Comment	Reference
A	311	SER	-	EXPRESSION TAG	UNP Q5LRQ9
A	312	ASN	-	EXPRESSION TAG	UNP Q5LRQ9
A	313	ALA	-	EXPRESSION TAG	UNP Q5LRQ9
B	311	SER	-	EXPRESSION TAG	UNP Q5LRQ9
B	312	ASN	-	EXPRESSION TAG	UNP Q5LRQ9
B	313	ALA	-	EXPRESSION TAG	UNP Q5LRQ9
C	311	SER	-	EXPRESSION TAG	UNP Q5LRQ9
C	312	ASN	-	EXPRESSION TAG	UNP Q5LRQ9
C	313	ALA	-	EXPRESSION TAG	UNP Q5LRQ9
D	311	SER	-	EXPRESSION TAG	UNP Q5LRQ9
D	312	ASN	-	EXPRESSION TAG	UNP Q5LRQ9
D	313	ALA	-	EXPRESSION TAG	UNP Q5LRQ9

- Molecule 2 is IODIDE ION (three-letter code: IOD) (formula: I).

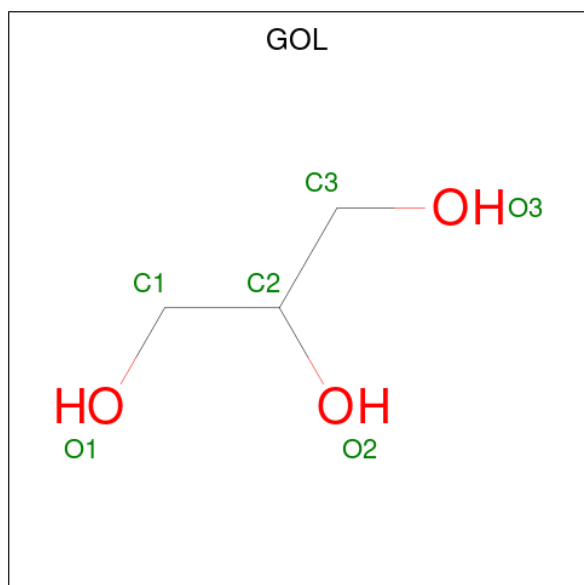
Mol	Chain	Residues	Atoms		ZeroOcc	AltConf
2	A	3	Total 3	I 3	0	0
2	B	4	Total 4	I 4	0	0

Continued on next page...

Continued from previous page...

Mol	Chain	Residues	Atoms	ZeroOcc	AltConf
2	C	3	Total I 3 3	0	0
2	D	4	Total I 4 4	0	0

- Molecule 3 is GLYCEROL (three-letter code: GOL) (formula: $C_3H_8O_3$).



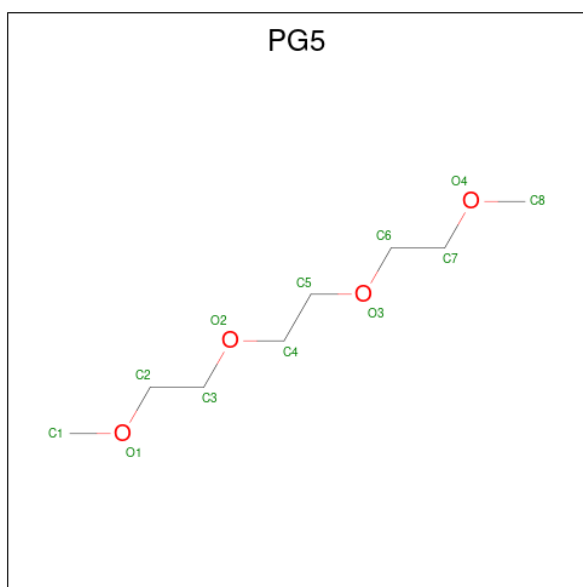
Mol	Chain	Residues	Atoms	ZeroOcc	AltConf
3	A	1	Total C O 6 3 3	0	0
3	B	1	Total C O 6 3 3	0	0
3	C	1	Total C O 6 3 3	0	0

- Molecule 4 is 1,2-ETHANEDIOL (three-letter code: EDO) (formula: $C_2H_6O_2$).



Mol	Chain	Residues	Atoms	ZeroOcc	AltConf
4	B	1	Total C O 4 2 2	0	0
4	B	1	Total C O 4 2 2	0	0
4	B	1	Total C O 4 2 2	0	0
4	B	1	Total C O 4 2 2	0	0
4	C	1	Total C O 4 2 2	0	0

- Molecule 5 is 1-METHOXY-2-[2-(2-METHOXY-ETHOXY)]-ETHANE (three-letter code: PG5) (formula: C₈H₁₈O₄).



Mol	Chain	Residues	Atoms	ZeroOcc	AltConf
5	B	1	Total C O 12 8 4	0	1
5	B	1	Total C O 12 8 4	0	1

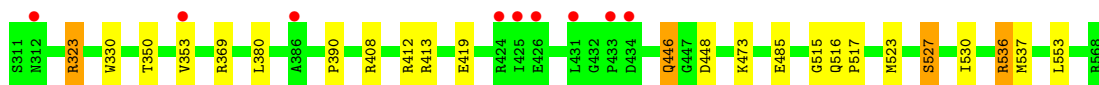
- Molecule 6 is water.

Mol	Chain	Residues	Atoms	ZeroOcc	AltConf
6	A	194	Total O 194 194	0	0
6	B	189	Total O 189 189	0	0
6	C	169	Total O 169 169	0	0
6	D	174	Total O 174 174	0	0

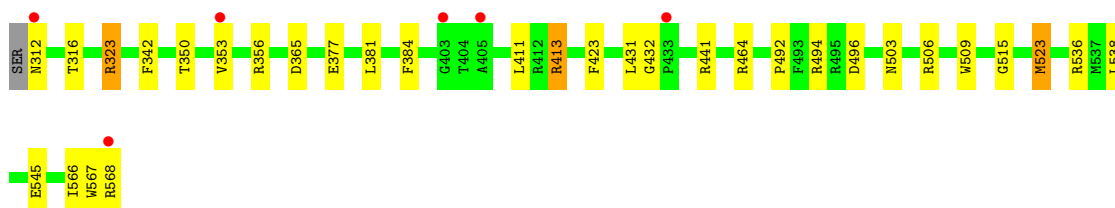
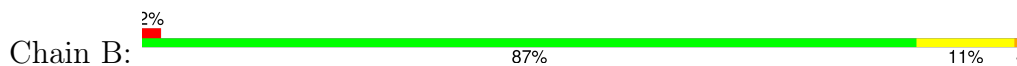
3 Residue-property plots [i](#)

These plots are drawn for all protein, RNA, DNA and oligosaccharide chains in the entry. The first graphic for a chain summarises the proportions of the various outlier classes displayed in the second graphic. The second graphic shows the sequence view annotated by issues in geometry and electron density. Residues are color-coded according to the number of geometric quality criteria for which they contain at least one outlier: green = 0, yellow = 1, orange = 2 and red = 3 or more. A red dot above a residue indicates a poor fit to the electron density ($RSRZ > 2$). Stretches of 2 or more consecutive residues without any outlier are shown as a green connector. Residues present in the sample, but not in the model, are shown in grey.

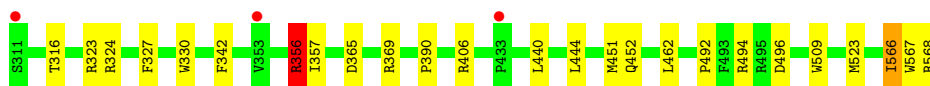
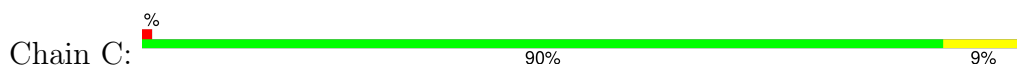
- Molecule 1: ABC transporter, periplasmic substrate-binding protein



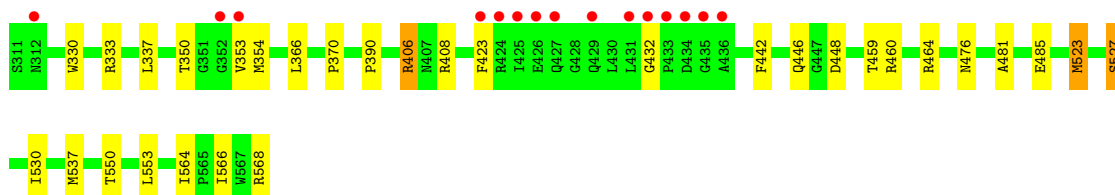
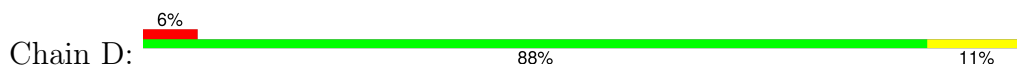
- Molecule 1: ABC transporter, periplasmic substrate-binding protein



- Molecule 1: ABC transporter, periplasmic substrate-binding protein



- Molecule 1: ABC transporter, periplasmic substrate-binding protein



4 Data and refinement statistics

Property	Value	Source
Space group	P 1	Depositor
Cell constants a, b, c, α , β , γ	47.38Å 75.52Å 78.48Å 82.63° 80.29° 77.42°	Depositor
Resolution (Å)	50.00 – 1.79 38.50 – 1.79	Depositor EDS
% Data completeness (in resolution range)	95.8 (50.00-1.79) 95.8 (38.50-1.79)	Depositor EDS
R_{merge}	0.12	Depositor
R_{sym}	(Not available)	Depositor
$\langle I/\sigma(I) \rangle$ ¹	2.50 (at 1.79Å)	Xtrriage
Refinement program	REFMAC 5.5.0102	Depositor
R, R_{free}	0.169 , 0.205 0.182 , 0.215	Depositor DCC
R_{free} test set	4666 reflections (4.99%)	wwPDB-VP
Wilson B-factor (Å ²)	18.7	Xtrriage
Anisotropy	0.384	Xtrriage
Bulk solvent k_{sol} (e/Å ³), B_{sol} (Å ²)	0.36 , 44.3	EDS
L-test for twinning ²	$\langle L \rangle = 0.50$, $\langle L^2 \rangle = 0.33$	Xtrriage
Estimated twinning fraction	No twinning to report.	Xtrriage
F_o, F_c correlation	0.96	EDS
Total number of atoms	9093	wwPDB-VP
Average B, all atoms (Å ²)	14.0	wwPDB-VP

Xtrriage's analysis on translational NCS is as follows: *The largest off-origin peak in the Patterson function is 4.95% of the height of the origin peak. No significant pseudotranslation is detected.*

¹Intensities estimated from amplitudes.

²Theoretical values of $\langle |L| \rangle$, $\langle L^2 \rangle$ for acentric reflections are 0.5, 0.333 respectively for untwinned datasets, and 0.375, 0.2 for perfectly twinned datasets.

5 Model quality

5.1 Standard geometry

Bond lengths and bond angles in the following residue types are not validated in this section: PG5, EDO, IOD, GOL

The Z score for a bond length (or angle) is the number of standard deviations the observed value is removed from the expected value. A bond length (or angle) with $|Z| > 5$ is considered an outlier worth inspection. RMSZ is the root-mean-square of all Z scores of the bond lengths (or angles).

Mol	Chain	Bond lengths		Bond angles	
		RMSZ	# Z >5	RMSZ	# Z >5
1	A	0.70	0/2096	0.74	1/2832 (0.0%)
1	B	0.71	0/2143	0.77	1/2894 (0.0%)
1	C	0.73	0/2098	0.87	6/2836 (0.2%)
1	D	0.65	0/2084	0.72	0/2817
All	All	0.70	0/8421	0.78	8/11379 (0.1%)

There are no bond length outliers.

All (8) bond angle outliers are listed below:

Mol	Chain	Res	Type	Atoms	Z	Observed(°)	Ideal(°)
1	C	356	ARG	NE-CZ-NH2	13.85	127.22	120.30
1	C	356	ARG	NE-CZ-NH1	-10.79	114.90	120.30
1	B	323	ARG	NE-CZ-NH2	-9.55	115.53	120.30
1	C	323	ARG	NE-CZ-NH2	-7.31	116.65	120.30
1	A	323	ARG	NE-CZ-NH1	-7.24	116.68	120.30
1	C	356	ARG	CD-NE-CZ	6.60	132.84	123.60
1	C	324	ARG	NE-CZ-NH2	-6.14	117.23	120.30
1	C	323	ARG	NE-CZ-NH1	5.40	123.00	120.30

There are no chirality outliers.

There are no planarity outliers.

5.2 Too-close contacts

In the following table, the Non-H and H(model) columns list the number of non-hydrogen atoms and hydrogen atoms in the chain respectively. The H(added) column lists the number of hydrogen atoms added and optimized by MolProbity. The Clashes column lists the number of clashes within the asymmetric unit, whereas Symm-Clashes lists symmetry-related clashes.

Mol	Chain	Non-H	H(model)	H(added)	Clashes	Symm-Clashes
1	A	2064	0	2034	15	0
1	B	2110	0	2071	33	0
1	C	2066	0	2026	17	0
1	D	2051	0	2018	28	0
2	A	3	0	0	0	0
2	B	4	0	0	1	0
2	C	3	0	0	2	0
2	D	4	0	0	1	0
3	A	6	0	8	0	0
3	B	6	0	8	0	0
3	C	6	0	7	1	0
4	B	16	0	24	9	0
4	C	4	0	6	0	0
5	B	24	0	36	4	0
6	A	194	0	0	3	0
6	B	189	0	0	5	0
6	C	169	0	0	2	0
6	D	174	0	0	5	0
All	All	9093	0	8238	96	0

The all-atom clashscore is defined as the number of clashes found per 1000 atoms (including hydrogen atoms). The all-atom clashscore for this structure is 6.

All (96) close contacts within the same asymmetric unit are listed below, sorted by their clash magnitude.

Atom-1	Atom-2	Interatomic distance (Å)	Clash overlap (Å)
1:D:537:MSE:HE1	1:D:553:LEU:HD22	1.59	0.84
1:B:323:ARG:HH21	1:B:515:GLY:H	1.22	0.83
1:C:566:ILE:HG13	1:C:567:TRP:N	1.92	0.82
1:B:323:ARG:HD3	4:B:605:EDO:H11	1.65	0.75
1:D:448[B]:ASP:OD1	6:D:241:HOH:O	2.04	0.75
1:A:485:GLU:OE1	6:A:649:HOH:O	2.02	0.75
1:C:356:ARG:HG3	1:C:357:ILE:N	2.00	0.74
1:A:448:ASP:OD1	6:A:307:HOH:O	2.04	0.73
1:A:537[B]:MSE:HE1	1:A:553:LEU:HD22	1.72	0.71
1:B:515:GLY:HA3	4:B:605:EDO:H22	1.71	0.71
1:C:342:PHE:CD1	1:C:356:ARG:HD3	2.25	0.71
1:A:408:ARG:NH2	1:B:365[B]:ASP:OD1	2.23	0.71
1:B:312:ASN:HA	6:B:573:HOH:O	1.90	0.71
1:B:411:LEU:HD11	1:B:464[A]:ARG:HH21	1.56	0.70
2:C:602:IOD:I	6:C:1:HOH:O	2.78	0.70
1:B:411:LEU:HD11	1:B:464[A]:ARG:HD2	1.74	0.70

Continued on next page...

Continued from previous page...

Atom-1	Atom-2	Interatomic distance (Å)	Clash overlap (Å)
1:D:333:ARG:O	1:D:337[A]:LEU:HD13	1.91	0.70
1:C:494[A]:ARG:HD2	6:C:586:HOH:O	1.91	0.69
1:C:566:ILE:HG13	1:C:567:TRP:H	1.57	0.69
1:D:537:MSE:HE1	1:D:553:LEU:CD2	2.23	0.68
1:D:460[B]:ARG:NH1	6:D:657:HOH:O	1.87	0.67
1:D:446:GLN:O	6:D:638:HOH:O	2.15	0.64
1:D:448[A]:ASP:OD1	6:D:128:HOH:O	2.15	0.63
1:D:366:LEU:HD13	1:D:550:THR:HG21	1.82	0.61
1:B:413[A]:ARG:HG3	6:B:683:HOH:O	2.00	0.61
4:B:611:EDO:H22	6:B:54:HOH:O	2.00	0.60
1:C:496:ASP:OD1	1:C:568:ARG:NH2	2.29	0.59
1:D:330:TRP:CE2	1:D:390:PRO:HG2	2.37	0.59
1:D:406[B]:ARG:NE	1:D:464:ARG:NH1	2.51	0.58
1:B:431[A]:LEU:HD12	1:B:431[A]:LEU:N	2.19	0.58
1:B:316:THR:OG1	1:B:494[B]:ARG:HD3	2.05	0.56
1:B:411:LEU:CD1	1:B:464[A]:ARG:HD2	2.35	0.56
1:B:431[A]:LEU:N	1:B:431[A]:LEU:CD1	2.70	0.55
1:B:515:GLY:HA3	4:B:605:EDO:C2	2.37	0.54
1:B:506:ARG:NH2	1:B:538:LEU:HD12	2.23	0.54
1:C:566:ILE:CG1	1:C:567:TRP:H	2.17	0.53
1:A:446:GLN:HA	1:A:473[A]:LYS:HG3	1.92	0.52
1:C:316:THR:HG23	1:C:494[B]:ARG:HG2	1.89	0.52
1:B:377:GLU:H	4:B:610:EDO:H21	1.75	0.52
1:B:384:PHE:CZ	5:B:609[B]:PG5:H52	2.46	0.51
1:D:527:SER:HB3	1:D:530:ILE:HD12	1.91	0.51
1:C:444:LEU:HD23	1:C:452:GLN:HG3	1.92	0.51
4:B:611:EDO:O2	6:B:200:HOH:O	2.06	0.50
1:B:492:PRO:HB2	4:B:606:EDO:H12	1.93	0.50
1:B:494[B]:ARG:NH2	1:B:496:ASP:OD1	2.41	0.50
1:D:406[B]:ARG:HG2	1:D:408:ARG:CZ	2.42	0.49
1:A:323:ARG:HH11	1:A:515[B]:GLY:H	1.59	0.49
1:A:537[B]:MSE:HE1	1:A:553:LEU:CD2	2.42	0.49
1:B:350:THR:O	1:B:353:VAL:HG22	2.12	0.49
1:D:423:PHE:CD1	1:D:432:GLY:HA2	2.47	0.48
1:B:323:ARG:NH2	1:B:515:GLY:H	2.01	0.48
1:B:515:GLY:CA	4:B:605:EDO:H22	2.42	0.48
1:B:423:PHE:CD1	1:B:432:GLY:HA2	2.49	0.48
1:D:350:THR:HG22	1:D:353:VAL:H	1.79	0.47
1:B:503[A]:ASN:ND2	1:B:538:LEU:HD13	2.29	0.47
5:B:608[A]:PG5:H52	6:B:659:HOH:O	2.13	0.47
1:C:566:ILE:HG13	1:C:567:TRP:O	2.16	0.46

Continued on next page...

Continued from previous page...

Atom-1	Atom-2	Interatomic distance (Å)	Clash overlap (Å)
1:D:442:PHE:HE2	1:D:459[A]:THR:HG22	1.79	0.46
1:D:406[B]:ARG:HG3	1:D:408:ARG:CG	2.46	0.46
1:B:384:PHE:HZ	5:B:608[A]:PG5:H31	1.81	0.45
1:C:451:MSE:HE3	1:C:492:PRO:HB3	1.99	0.45
1:C:330:TRP:CE2	1:C:390:PRO:HG2	2.51	0.45
1:B:536:ARG:HD3	1:B:545:GLU:OE2	2.17	0.44
1:D:442:PHE:HE2	1:D:459[A]:THR:CG2	2.30	0.44
1:C:327:PHE:HE1	1:C:440[A]:LEU:CD2	2.30	0.44
1:D:523:MSE:H	1:D:523:MSE:SE	2.50	0.44
1:A:413:ARG:HD2	6:A:584:HOH:O	2.16	0.44
1:C:440[A]:LEU:HD12	1:C:462:LEU:HD13	2.00	0.44
1:D:350:THR:OG1	1:D:354:MSE:HE3	2.17	0.44
1:C:406:ARG:HH11	3:C:604:GOL:H2	1.83	0.44
1:D:476:ASN:HB2	2:D:604:IOD:I	2.88	0.44
1:A:516[A]:GLN:HA	1:A:517:PRO:HD2	1.86	0.43
1:B:567:TRP:O	1:B:568:ARG:HG2	2.19	0.43
1:D:406[B]:ARG:HG3	1:D:408:ARG:HG3	2.01	0.43
1:A:330:TRP:CE2	1:A:390:PRO:HG2	2.53	0.43
1:C:365[B]:ASP:OD1	2:C:601:IOD:I	3.07	0.43
1:A:350:THR:HG22	1:A:353:VAL:H	1.83	0.42
1:B:384:PHE:CZ	5:B:608[A]:PG5:H31	2.53	0.42
1:D:406[A]:ARG:HD3	1:D:406[A]:ARG:HA	1.71	0.42
1:D:406[B]:ARG:CG	1:D:408:ARG:HG3	2.49	0.42
1:A:537[A]:MSE:SE	1:A:553:LEU:HD22	2.68	0.42
1:B:523:MSE:SE	1:B:523:MSE:H	2.52	0.42
1:A:412:ARG:HD2	2:B:601:IOD:I	2.90	0.42
1:B:323:ARG:HE	1:B:515:GLY:HA2	1.85	0.41
1:D:406[B]:ARG:CG	1:D:408:ARG:CG	2.99	0.41
1:B:342:PHE:CE2	1:B:356:ARG:HB2	2.55	0.41
1:D:568:ARG:HG2	6:D:655:HOH:O	2.20	0.41
1:B:323:ARG:HE	1:B:515:GLY:CA	2.34	0.41
1:B:381:LEU:HD23	1:B:381:LEU:HA	1.92	0.41
1:D:337[A]:LEU:HD12	1:D:564:ILE:HG12	2.03	0.41
1:A:380:LEU:HD22	1:A:536[A]:ARG:HG2	2.02	0.41
1:A:527:SER:HB3	1:A:530:ILE:HD12	2.03	0.41
1:B:323:ARG:CD	4:B:605:EDO:H11	2.44	0.41
1:C:327:PHE:CE1	1:C:440[A]:LEU:HD23	2.56	0.41
1:D:481:ALA:O	1:D:485:GLU:HG3	2.21	0.41
1:D:406[B]:ARG:HG2	1:D:408:ARG:NE	2.37	0.40

There are no symmetry-related clashes.

5.3 Torsion angles [i](#)

5.3.1 Protein backbone [i](#)

In the following table, the Percentiles column shows the percent Ramachandran outliers of the chain as a percentile score with respect to all X-ray entries followed by that with respect to entries of similar resolution.

The Analysed column shows the number of residues for which the backbone conformation was analysed, and the total number of residues.

Mol	Chain	Analysed	Favoured	Allowed	Outliers	Percentiles	
1	A	265/258 (103%)	261 (98%)	3 (1%)	1 (0%)	34	21
1	B	268/258 (104%)	261 (97%)	6 (2%)	1 (0%)	34	21
1	C	264/258 (102%)	261 (99%)	2 (1%)	1 (0%)	34	21
1	D	262/258 (102%)	259 (99%)	2 (1%)	1 (0%)	34	21
All	All	1059/1032 (103%)	1042 (98%)	13 (1%)	4 (0%)	34	21

All (4) Ramachandran outliers are listed below:

Mol	Chain	Res	Type
1	C	566	ILE
1	A	446	GLN
1	D	566	ILE
1	B	566	ILE

5.3.2 Protein sidechains [i](#)

In the following table, the Percentiles column shows the percent sidechain outliers of the chain as a percentile score with respect to all X-ray entries followed by that with respect to entries of similar resolution.

The Analysed column shows the number of residues for which the sidechain conformation was analysed, and the total number of residues.

Mol	Chain	Analysed	Rotameric	Outliers	Percentiles	
1	A	207/195 (106%)	201 (97%)	6 (3%)	42	29
1	B	213/195 (109%)	208 (98%)	5 (2%)	50	37
1	C	208/195 (107%)	204 (98%)	4 (2%)	57	46
1	D	207/195 (106%)	202 (98%)	5 (2%)	49	36
All	All	835/780 (107%)	815 (98%)	20 (2%)	53	36

All (20) residues with a non-rotameric sidechain are listed below:

Mol	Chain	Res	Type
1	A	369	ARG
1	A	419	GLU
1	A	523	MSE
1	A	527	SER
1	A	536[A]	ARG
1	A	536[B]	ARG
1	B	413[A]	ARG
1	B	413[B]	ARG
1	B	441	ARG
1	B	509	TRP
1	B	523	MSE
1	C	356	ARG
1	C	369	ARG
1	C	509	TRP
1	C	523	MSE
1	D	370	PRO
1	D	406[A]	ARG
1	D	406[B]	ARG
1	D	523	MSE
1	D	527	SER

Sometimes sidechains can be flipped to improve hydrogen bonding and reduce clashes. There are no such sidechains identified.

5.3.3 RNA [i](#)

There are no RNA molecules in this entry.

5.4 Non-standard residues in protein, DNA, RNA chains [i](#)

There are no non-standard protein/DNA/RNA residues in this entry.

5.5 Carbohydrates [i](#)

There are no monosaccharides in this entry.

5.6 Ligand geometry [i](#)

Of 24 ligands modelled in this entry, 14 are monoatomic - leaving 10 for Mogul analysis.

In the following table, the Counts columns list the number of bonds (or angles) for which Mogul statistics could be retrieved, the number of bonds (or angles) that are observed in the model and the number of bonds (or angles) that are defined in the Chemical Component Dictionary. The Link column lists molecule types, if any, to which the group is linked. The Z score for a bond length (or angle) is the number of standard deviations the observed value is removed from the expected value. A bond length (or angle) with $|Z| > 2$ is considered an outlier worth inspection. RMSZ is the root-mean-square of all Z scores of the bond lengths (or angles).

Mol	Type	Chain	Res	Link	Bond lengths			Bond angles		
					Counts	RMSZ	# Z > 2	Counts	RMSZ	# Z > 2
4	EDO	C	605	-	3,3,3	0.37	0	2,2,2	0.58	0
4	EDO	B	605	-	3,3,3	0.24	0	2,2,2	0.86	0
4	EDO	B	610	-	3,3,3	0.21	0	2,2,2	0.78	0
3	GOL	A	604	-	5,5,5	0.33	0	5,5,5	0.39	0
4	EDO	B	606	-	3,3,3	0.43	0	2,2,2	0.32	0
5	PG5	B	609[B]	-	11,11,11	0.56	0	10,10,10	0.38	0
3	GOL	C	604	-	5,5,5	1.07	1 (20%)	5,5,5	1.74	1 (20%)
4	EDO	B	611	-	3,3,3	0.46	0	2,2,2	0.72	0
3	GOL	B	607	-	5,5,5	0.48	0	5,5,5	0.31	0
5	PG5	B	608[A]	-	11,11,11	0.55	0	10,10,10	0.35	0

In the following table, the Chirals column lists the number of chiral outliers, the number of chiral centers analysed, the number of these observed in the model and the number defined in the Chemical Component Dictionary. Similar counts are reported in the Torsion and Rings columns. '-' means no outliers of that kind were identified.

Mol	Type	Chain	Res	Link	Chirals	Torsions	Rings
4	EDO	C	605	-	-	1/1/1/1	-
4	EDO	B	605	-	-	1/1/1/1	-
4	EDO	B	610	-	-	1/1/1/1	-
3	GOL	A	604	-	-	0/4/4/4	-
4	EDO	B	606	-	-	0/1/1/1	-
5	PG5	B	609[B]	-	-	5/9/9/9	-
3	GOL	C	604	-	-	2/4/4/4	-
4	EDO	B	611	-	-	1/1/1/1	-
3	GOL	B	607	-	-	0/4/4/4	-
5	PG5	B	608[A]	-	-	8/9/9/9	-

All (1) bond length outliers are listed below:

Mol	Chain	Res	Type	Atoms	Z	Observed(Å)	Ideal(Å)
3	C	604	GOL	O1-C1	-2.11	1.33	1.42

All (1) bond angle outliers are listed below:

Mol	Chain	Res	Type	Atoms	Z	Observed(°)	Ideal(°)
3	C	604	GOL	O2-C2-C1	-2.67	98.13	109.18

There are no chirality outliers.

All (19) torsion outliers are listed below:

Mol	Chain	Res	Type	Atoms
3	C	604	GOL	C1-C2-C3-O3
5	B	609[B]	PG5	O3-C6-C7-O4
5	B	609[B]	PG5	O2-C4-C5-O3
5	B	608[A]	PG5	O3-C6-C7-O4
5	B	608[A]	PG5	O1-C2-C3-O2
4	B	605	EDO	O1-C1-C2-O2
4	B	610	EDO	O1-C1-C2-O2
4	C	605	EDO	O1-C1-C2-O2
4	B	611	EDO	O1-C1-C2-O2
3	C	604	GOL	O1-C1-C2-O2
5	B	608[A]	PG5	C2-C3-O2-C4
5	B	608[A]	PG5	C5-C4-O2-C3
5	B	608[A]	PG5	C4-C5-O3-C6
5	B	608[A]	PG5	C3-C2-O1-C1
5	B	609[B]	PG5	C3-C2-O1-C1
5	B	609[B]	PG5	O1-C2-C3-O2
5	B	609[B]	PG5	C6-C7-O4-C8
5	B	608[A]	PG5	O2-C4-C5-O3
5	B	608[A]	PG5	C6-C7-O4-C8

There are no ring outliers.

7 monomers are involved in 14 short contacts:

Mol	Chain	Res	Type	Clashes	Symm-Clashes
4	B	605	EDO	5	0
4	B	610	EDO	1	0
4	B	606	EDO	1	0
5	B	609[B]	PG5	1	0
3	C	604	GOL	1	0
4	B	611	EDO	2	0
5	B	608[A]	PG5	3	0

5.7 Other polymers [i](#)

There are no such residues in this entry.

5.8 Polymer linkage issues

There are no chain breaks in this entry.

6 Fit of model and data

6.1 Protein, DNA and RNA chains

In the following table, the column labelled ‘#RSRZ > 2’ contains the number (and percentage) of RSRZ outliers, followed by percent RSRZ outliers for the chain as percentile scores relative to all X-ray entries and entries of similar resolution. The OWAB column contains the minimum, median, 95th percentile and maximum values of the occupancy-weighted average B-factor per residue. The column labelled ‘Q < 0.9’ lists the number of (and percentage) of residues with an average occupancy less than 0.9.

Mol	Chain	Analysed	<RSRZ>	#RSRZ>2	OWAB(Å ²)	Q<0.9
1	A	252/258 (97%)	0.09	9 (3%) 42 37	6, 13, 26, 31	0
1	B	251/258 (97%)	0.08	6 (2%) 59 54	4, 11, 25, 34	0
1	C	252/258 (97%)	-0.11	3 (1%) 79 76	5, 12, 25, 31	0
1	D	252/258 (97%)	0.22	15 (5%) 21 17	4, 14, 30, 42	0
All	All	1007/1032 (97%)	0.07	33 (3%) 46 40	4, 13, 26, 42	0

All (33) RSRZ outliers are listed below:

Mol	Chain	Res	Type	RSRZ
1	A	353	VAL	5.5
1	D	432	GLY	5.1
1	D	433	PRO	5.0
1	D	434	ASP	4.9
1	C	311	SER	4.0
1	B	568	ARG	3.9
1	A	433	PRO	3.8
1	D	431	LEU	3.7
1	B	353	VAL	3.6
1	D	435	GLY	3.5
1	A	386	ALA	3.3
1	D	426	GLU	3.3
1	D	425	ILE	3.2
1	D	353	VAL	3.1
1	A	431	LEU	3.1
1	B	405	ALA	2.9
1	B	312	ASN	2.8
1	D	436	ALA	2.7
1	D	429	GLN	2.7
1	D	424	ARG	2.6
1	C	433	PRO	2.5

Continued on next page...

Continued from previous page...

Mol	Chain	Res	Type	RSRZ
1	A	312	ASN	2.5
1	A	426	GLU	2.4
1	D	352	GLY	2.4
1	D	427	GLN	2.2
1	B	403	GLY	2.2
1	B	433	PRO	2.2
1	D	423	PHE	2.2
1	A	424	ARG	2.1
1	D	312	ASN	2.1
1	A	425	ILE	2.1
1	A	434	ASP	2.0
1	C	353	VAL	2.0

6.2 Non-standard residues in protein, DNA, RNA chains [i](#)

There are no non-standard protein/DNA/RNA residues in this entry.

6.3 Carbohydrates [i](#)

There are no monosaccharides in this entry.

6.4 Ligands [i](#)

In the following table, the Atoms column lists the number of modelled atoms in the group and the number defined in the chemical component dictionary. The B-factors column lists the minimum, median, 95th percentile and maximum values of B factors of atoms in the group. The column labelled 'Q< 0.9' lists the number of atoms with occupancy less than 0.9.

Mol	Type	Chain	Res	Atoms	RSCC	RSR	B-factors(Å ²)	Q<0.9
5	PG5	B	608[A]	12/12	0.77	0.23	14,28,38,38	12
5	PG5	B	609[B]	12/12	0.81	0.21	20,23,32,34	12
4	EDO	B	605	4/4	0.86	0.16	33,35,35,36	0
4	EDO	B	610	4/4	0.89	0.15	31,32,32,37	0
3	GOL	A	604	6/6	0.89	0.16	29,33,34,36	0
4	EDO	B	606	4/4	0.89	0.18	45,47,47,48	0
3	GOL	C	604	6/6	0.90	0.18	15,19,24,32	0
3	GOL	B	607	6/6	0.90	0.12	27,31,33,35	0
4	EDO	C	605	4/4	0.92	0.17	21,27,33,34	0
2	IOD	D	602	1/1	0.93	0.13	35,35,35,35	1
4	EDO	B	611	4/4	0.94	0.15	22,24,26,29	0

Continued on next page...

Continued from previous page...

Mol	Type	Chain	Res	Atoms	RSCC	RSR	B-factors(\AA^2)	Q<0.9
2	IOD	C	601	1/1	0.96	0.08	28,28,28,28	0
2	IOD	B	603	1/1	0.97	0.04	37,37,37,37	1
2	IOD	D	604	1/1	0.97	0.04	38,38,38,38	1
2	IOD	A	603	1/1	0.97	0.05	35,35,35,35	1
2	IOD	C	603	1/1	0.97	0.04	32,32,32,32	1
2	IOD	A	602	1/1	0.98	0.08	35,35,35,35	1
2	IOD	D	603	1/1	0.99	0.04	34,34,34,34	1
2	IOD	B	602	1/1	0.99	0.09	23,23,23,23	1
2	IOD	B	601	1/1	0.99	0.07	28,28,28,28	0
2	IOD	B	604	1/1	0.99	0.06	35,35,35,35	1
2	IOD	A	601	1/1	1.00	0.05	24,24,24,24	1
2	IOD	D	601	1/1	1.00	0.12	20,20,20,20	1
2	IOD	C	602	1/1	1.00	0.10	23,23,23,23	1

6.5 Other polymers [i](#)

There are no such residues in this entry.