



Full wwPDB X-ray Structure Validation Report ⓘ

Aug 6, 2020 – 04:16 PM BST

PDB ID : 3L4Z
Title : Crystal complex of N-terminal Human Maltase-Glucoamylase with Salacinol
Authors : Sim, L.; Rose, D.R.
Deposited on : 2009-12-21
Resolution : 2.00 Å(reported)

This is a Full wwPDB X-ray Structure Validation Report for a publicly released PDB entry.

We welcome your comments at validation@mail.wwpdb.org

A user guide is available at

<https://www.wwpdb.org/validation/2017/XrayValidationReportHelp>

with specific help available everywhere you see the ⓘ symbol.

The following versions of software and data (see [references ⓘ](#)) were used in the production of this report:

MolProbity : 4.02b-467
Mogul : 1.8.5 (274361), CSD as541be (2020)
Xtriage (Phenix) : 1.13
EDS : 2.13.1
buster-report : 1.1.7 (2018)
Percentile statistics : 20191225.v01 (using entries in the PDB archive December 25th 2019)
Refmac : 5.8.0158
CCP4 : 7.0.044 (Gargrove)
Ideal geometry (proteins) : Engh & Huber (2001)
Ideal geometry (DNA, RNA) : Parkinson et al. (1996)
Validation Pipeline (wwPDB-VP) : 2.13.1

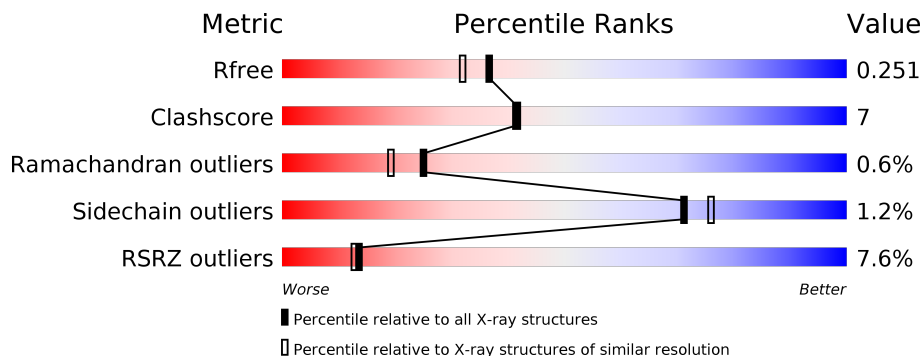
1 Overall quality at a glance

The following experimental techniques were used to determine the structure:

X-RAY DIFFRACTION


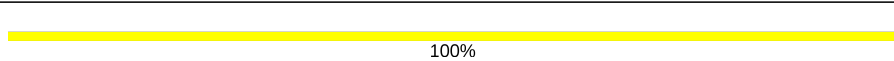
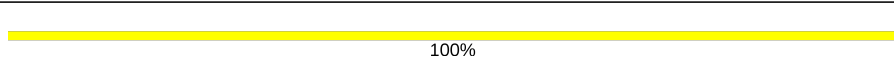
The reported resolution of this entry is 2.00 Å.

Percentile scores (ranging between 0-100) for global validation metrics of the entry are shown in the following graphic. The table shows the number of entries on which the scores are based.



Metric	Whole archive (#Entries)	Similar resolution (#Entries, resolution range(Å))
R_{free}	130704	8085 (2.00-2.00)
Clashscore	141614	9178 (2.00-2.00)
Ramachandran outliers	138981	9054 (2.00-2.00)
Sidechain outliers	138945	9053 (2.00-2.00)
RSRZ outliers	127900	7900 (2.00-2.00)

The table below summarises the geometric issues observed across the polymeric chains and their fit to the electron density. The red, orange, yellow and green segments on the lower bar indicate the fraction of residues that contain outliers for ≥ 3 , 2, 1 and 0 types of geometric quality criteria respectively. A grey segment represents the fraction of residues that are not modelled. The numeric value for each fraction is indicated below the corresponding segment, with a dot representing fractions $\leq 5\%$. The upper red bar (where present) indicates the fraction of residues that have poor fit to the electron density. The numeric value is given above the bar.

Mol	Chain	Length	Quality of chain
1	A	875	
2	B	2	
2	C	2	

The following table lists non-polymeric compounds, carbohydrate monomers and non-standard residues in protein, DNA, RNA chains that are outliers for geometric or electron-density-fit criteria:

Mol	Type	Chain	Res	Chirality	Geometry	Clashes	Electron density
2	NAG	B	2	X	-	-	-
3	SSD	A	1001	X	-	-	-
5	GOL	A	3003	-	-	X	-

2 Entry composition i

There are 6 unique types of molecules in this entry. The entry contains 7477 atoms, of which 0 are hydrogens and 0 are deuteriums.

In the tables below, the ZeroOcc column contains the number of atoms modelled with zero occupancy, the AltConf column contains the number of residues with at least one atom in alternate conformation and the Trace column contains the number of residues modelled with at most 2 atoms.

- Molecule 1 is a protein called Maltase-glucoamylase, intestinal.

Mol	Chain	Residues	Atoms					ZeroOcc	AltConf	Trace
			Total	C	N	O	S			
1	A	863	6934	4420	1174	1313	27	0	4	0

There are 8 discrepancies between the modelled and reference sequences:

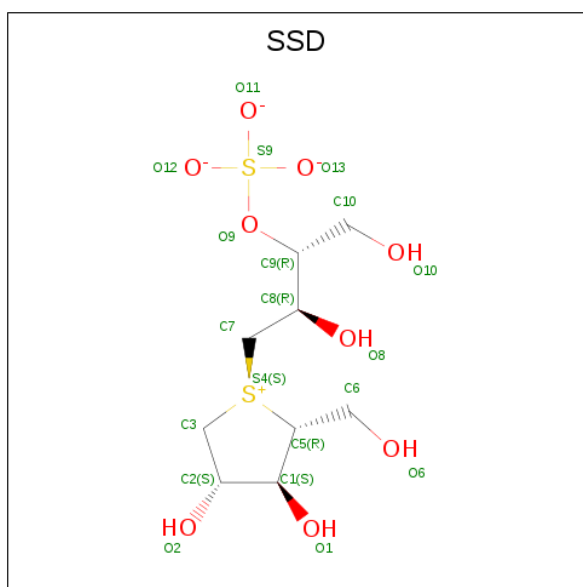
Chain	Residue	Modelled	Actual	Comment	Reference
A	772	ASP	ASN	variant	UNP O43451
A	869	ALA	-	expression tag	UNP O43451
A	870	HIS	-	expression tag	UNP O43451
A	871	HIS	-	expression tag	UNP O43451
A	872	HIS	-	expression tag	UNP O43451
A	873	HIS	-	expression tag	UNP O43451
A	874	HIS	-	expression tag	UNP O43451
A	875	HIS	-	expression tag	UNP O43451

- Molecule 2 is an oligosaccharide called 2-acetamido-2-deoxy-beta-D-glucopyranose-(1-4)-2-acetamido-2-deoxy-beta-D-glucopyranose.



Mol	Chain	Residues	Atoms				ZeroOcc	AltConf	Trace
			Total	C	N	O			
2	B	2	28	16	2	10	0	0	0
2	C	2	28	16	2	10	0	0	0

- Molecule 3 is 1,4-DIDEOXY-1,4-[[2R,3R)-2,4-DIHYDROXY-3-(SULFOXY)BUTYL]EPISULFONIUMYLIDENE]-D-ARABINITOL INNER SALT (three-letter code: SSD) (formula: C₉H₁₈O₉S₂).



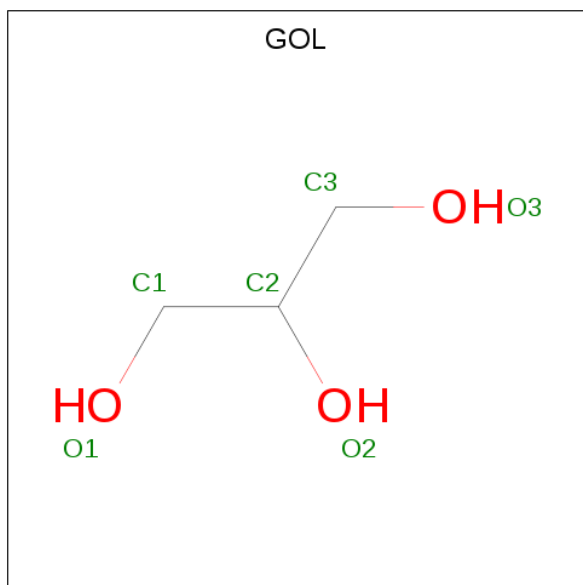
Mol	Chain	Residues	Atoms				ZeroOcc	AltConf
3	A	1	Total	C	O	S	0	0
			20	9	9	2		

- Molecule 4 is 2-acetamido-2-deoxy-beta-D-glucopyranose (three-letter code: NAG) (formula: $C_8H_{15}NO_6$).



Mol	Chain	Residues	Atoms				ZeroOcc	AltConf
4	A	1	Total	C	N	O	0	0
			14	8	1	5		

- Molecule 5 is GLYCEROL (three-letter code: GOL) (formula: $C_3H_8O_3$).



Mol	Chain	Residues	Atoms	ZeroOcc	AltConf
5	A	1	Total C O 6 3 3	0	0
5	A	1	Total C O 6 3 3	0	0
5	A	1	Total C O 6 3 3	0	0
5	A	1	Total C O 6 3 3	0	0

- Molecule 6 is water.

Mol	Chain	Residues	Atoms	ZeroOcc	AltConf
6	A	429	Total O 429 429	0	0

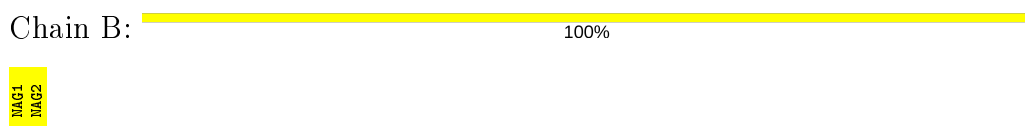
3 Residue-property plots [i](#)

These plots are drawn for all protein, RNA, DNA and oligosaccharide chains in the entry. The first graphic for a chain summarises the proportions of the various outlier classes displayed in the second graphic. The second graphic shows the sequence view annotated by issues in geometry and electron density. Residues are color-coded according to the number of geometric quality criteria for which they contain at least one outlier: green = 0, yellow = 1, orange = 2 and red = 3 or more. A red dot above a residue indicates a poor fit to the electron density ($RSRZ > 2$). Stretches of 2 or more consecutive residues without any outlier are shown as a green connector. Residues present in the sample, but not in the model, are shown in grey.

- Molecule 1: Maltase-glucoamylase, intestinal



- Molecule 2: 2-acetamido-2-deoxy-beta-D-glucopyranose-(1-4)-2-acetamido-2-deoxy-beta-D-glucopyranose



- Molecule 2: 2-acetamido-2-deoxy-beta-D-glucopyranose-(1-4)-2-acetamido-2-deoxy-beta-D-glucopyranose



MAC1
MAC2

4 Data and refinement statistics

Property	Value	Source
Space group	P 21 21 21	Depositor
Cell constants a, b, c, α , β , γ	92.42Å 108.78Å 111.05Å 90.00° 90.00° 90.00°	Depositor
Resolution (Å)	19.83 – 2.00 19.80 – 2.00	Depositor EDS
% Data completeness (in resolution range)	98.2 (19.83-2.00) 98.2 (19.80-2.00)	Depositor EDS
R_{merge}	0.10	Depositor
R_{sym}	(Not available)	Depositor
$\langle I/\sigma(I) \rangle$ ¹	3.84 (at 2.01Å)	Xtrriage
Refinement program	REFMAC 5.2.0019	Depositor
R, R_{free}	0.202 , 0.253 0.201 , 0.251	Depositor DCC
R_{free} test set	3757 reflections (5.03%)	wwPDB-VP
Wilson B-factor (Å ²)	33.5	Xtrriage
Anisotropy	0.181	Xtrriage
Bulk solvent k_{sol} (e/Å ³), B_{sol} (Å ²)	0.43 , 54.1	EDS
L-test for twinning ²	$\langle L \rangle = 0.50$, $\langle L^2 \rangle = 0.33$	Xtrriage
Estimated twinning fraction	0.010 for -h,l,k	Xtrriage
F_o, F_c correlation	0.95	EDS
Total number of atoms	7477	wwPDB-VP
Average B, all atoms (Å ²)	35.0	wwPDB-VP

Xtrriage's analysis on translational NCS is as follows: *The largest off-origin peak in the Patterson function is 3.64% of the height of the origin peak. No significant pseudotranslation is detected.*

¹Intensities estimated from amplitudes.

²Theoretical values of $\langle |L| \rangle$, $\langle L^2 \rangle$ for acentric reflections are 0.5, 0.333 respectively for untwinned datasets, and 0.375, 0.2 for perfectly twinned datasets.

5 Model quality [i](#)

5.1 Standard geometry [i](#)

Bond lengths and bond angles in the following residue types are not validated in this section: GOL, NAG, SSD

The Z score for a bond length (or angle) is the number of standard deviations the observed value is removed from the expected value. A bond length (or angle) with $|Z| > 5$ is considered an outlier worth inspection. RMSZ is the root-mean-square of all Z scores of the bond lengths (or angles).

Mol	Chain	Bond lengths		Bond angles	
		RMSZ	# Z >5	RMSZ	# Z >5
1	A	0.77	0/7142	0.76	3/9742 (0.0%)

Chiral center outliers are detected by calculating the chiral volume of a chiral center and verifying if the center is modelled as a planar moiety or with the opposite hand. A planarity outlier is detected by checking planarity of atoms in a peptide group, atoms in a mainchain group or atoms of a sidechain that are expected to be planar.

Mol	Chain	#Chirality outliers	#Planarity outliers
1	A	0	1

There are no bond length outliers.

All (3) bond angle outliers are listed below:

Mol	Chain	Res	Type	Atoms	Z	Observed($^{\circ}$)	Ideal($^{\circ}$)
1	A	624	ARG	NE-CZ-NH1	5.82	123.21	120.30
1	A	624	ARG	NE-CZ-NH2	-5.73	117.44	120.30
1	A	578	ASP	CB-CG-OD1	5.11	122.89	118.30

There are no chirality outliers.

All (1) planarity outliers are listed below:

Mol	Chain	Res	Type	Group
1	A	121	GLY	Peptide

5.2 Too-close contacts [i](#)

In the following table, the Non-H and H(model) columns list the number of non-hydrogen atoms and hydrogen atoms in the chain respectively. The H(added) column lists the number of hydrogen atoms added and optimized by MolProbity. The Clashes column lists the number of clashes within

the asymmetric unit, whereas Symm-Clashes lists symmetry related clashes.

Mol	Chain	Non-H	H(model)	H(added)	Clashes	Symm-Clashes
1	A	6934	0	6598	96	0
2	B	28	0	25	0	0
2	C	28	0	25	0	0
3	A	20	0	18	0	0
4	A	14	0	13	0	0
5	A	24	0	32	7	0
6	A	429	0	0	13	0
All	All	7477	0	6711	96	0

The all-atom clashscore is defined as the number of clashes found per 1000 atoms (including hydrogen atoms). The all-atom clashscore for this structure is 7.

All (96) close contacts within the same asymmetric unit are listed below, sorted by their clash magnitude.

Atom-1	Atom-2	Interatomic distance (Å)	Clash overlap (Å)
1:A:98:HIS:HE1	1:A:261:ASP:OD1	1.55	0.88
1:A:479[B]:CYS:SG	6:A:4310:HOH:O	2.31	0.87
1:A:691:VAL:HG23	6:A:4177:HOH:O	1.76	0.86
1:A:493:GLN:NE2	1:A:497:HIS:HD2	1.82	0.76
1:A:779:VAL:HG12	5:A:3003:GOL:H11	1.68	0.74
1:A:183:HIS:HE1	1:A:198:PRO:O	1.72	0.73
1:A:830:LYS:HE3	6:A:4276:HOH:O	1.89	0.72
1:A:645:HIS:NE2	5:A:3003:GOL:H32	2.08	0.69
1:A:625:HIS:HD2	5:A:3004:GOL:H2	1.58	0.69
1:A:493:GLN:HE21	1:A:497:HIS:HD2	1.40	0.67
1:A:763:GLU:OE2	1:A:792:THR:HG23	1.95	0.67
1:A:195:LYS:NZ	6:A:4414:HOH:O	2.26	0.66
1:A:98:HIS:CE1	1:A:261:ASP:OD1	2.44	0.66
1:A:712:ARG:H	1:A:714:GLN:HE21	1.44	0.66
1:A:90:GLU:OE1	1:A:98:HIS:HD2	1.80	0.65
1:A:493:GLN:NE2	1:A:497:HIS:CD2	2.65	0.62
1:A:189:ARG:NH1	1:A:667:ASP:OD2	2.33	0.62
1:A:446:GLU:N	1:A:447:VAL:HA	2.15	0.61
1:A:292:LEU:HD23	1:A:567:MET:CE	2.31	0.60
1:A:56:GLY:O	1:A:135:ARG:NH2	2.34	0.60
1:A:295:HIS:HD2	1:A:325:HIS:NE2	1.99	0.60
1:A:464:ASN:ND2	1:A:484:MET:H	2.00	0.60
1:A:576:ALA:O	1:A:577:LEU:HB2	2.02	0.59
1:A:704:GLU:HG3	6:A:4423:HOH:O	2.03	0.59
1:A:201:ASN:O	1:A:497:HIS:HE1	1.86	0.59

Continued on next page...

Continued from previous page...

Atom-1	Atom-2	Interatomic distance (Å)	Clash overlap (Å)
1:A:829:VAL:O	1:A:836:SER:HA	2.03	0.58
1:A:12:ARG:HD3	1:A:45:TYR:CD2	2.39	0.56
1:A:681:THR:HG22	1:A:691:VAL:HG11	1.88	0.56
1:A:667:ASP:HA	6:A:4192:HOH:O	2.06	0.56
1:A:836:SER:C	1:A:838:THR:OG1	2.44	0.56
1:A:204:THR:HG23	1:A:213:LEU:HD23	1.87	0.56
1:A:300:GLU:HG3	1:A:603:GLN:NE2	2.20	0.55
1:A:195:LYS:CE	6:A:4414:HOH:O	2.55	0.55
1:A:167:GLN:NE2	1:A:254:ARG:HE	2.05	0.55
1:A:618:LEU:HD11	1:A:723:ASP:HB3	1.89	0.54
1:A:42:PRO:HD3	1:A:194:TRP:CH2	2.43	0.54
1:A:645:HIS:NE2	5:A:3003:GOL:C3	2.71	0.54
1:A:164:GLN:NE2	1:A:462:ASN:HD22	2.06	0.53
1:A:183:HIS:HD2	1:A:185:HIS:NE2	2.06	0.53
1:A:360:LYS:HE2	6:A:4121:HOH:O	2.07	0.53
1:A:619:LEU:C	1:A:619:LEU:HD23	2.30	0.51
1:A:183:HIS:CE1	1:A:198:PRO:O	2.60	0.51
1:A:351:VAL:HG22	1:A:361:LEU:HD22	1.92	0.51
1:A:493:GLN:HE21	1:A:497:HIS:CD2	2.26	0.50
1:A:60:ASN:ND2	6:A:4072:HOH:O	2.41	0.50
1:A:336:ASP:HB3	1:A:337:PHE:CD2	2.47	0.50
1:A:183:HIS:CD2	1:A:185:HIS:NE2	2.80	0.49
1:A:33:TRP:CE2	1:A:35:PRO:HG3	2.47	0.49
1:A:291:ALA:O	1:A:295:HIS:HE1	1.95	0.49
1:A:464:ASN:HD21	1:A:484:MET:H	1.59	0.49
1:A:164:GLN:HE22	1:A:462:ASN:HD22	1.59	0.49
1:A:453:GLY:HA3	1:A:458:CYS:SG	2.53	0.49
1:A:193[A]:ASN:HA	1:A:247:PRO:HG3	1.95	0.48
1:A:366:ASP:HB3	6:A:4182:HOH:O	2.14	0.48
1:A:739:GLN:HB2	1:A:750:ASN:HB3	1.94	0.48
1:A:550:LEU:HD13	1:A:587:TRP:CG	2.48	0.48
1:A:502:TYR:OH	6:A:4297:HOH:O	2.12	0.47
1:A:401:LEU:HD23	1:A:401:LEU:C	2.35	0.47
1:A:201:ASN:H	1:A:498:ASN:ND2	2.13	0.47
1:A:625:HIS:CD2	5:A:3004:GOL:H2	2.45	0.47
1:A:779:VAL:CG1	5:A:3003:GOL:H11	2.42	0.47
1:A:243:VAL:CG1	1:A:251:ILE:HD11	2.45	0.46
1:A:349:GLU:O	1:A:353:GLU:HG3	2.15	0.46
1:A:590:LEU:HD13	1:A:682:PRO:HG3	1.97	0.46
1:A:673:LEU:HA	1:A:678:LEU:O	2.16	0.46
1:A:591:GLY:HA2	1:A:594:TYR:CD2	2.51	0.46

Continued on next page...

Continued from previous page...

Atom-1	Atom-2	Interatomic distance (Å)	Clash overlap (Å)
1:A:16:ILE:CG2	1:A:19:GLN:HG2	2.46	0.46
1:A:243:VAL:HG11	1:A:251:ILE:HD11	1.99	0.45
1:A:269:THR:OG1	1:A:272:GLN:HG3	2.17	0.45
1:A:149:ARG:HB2	1:A:149:ARG:HE	1.54	0.44
1:A:135:ARG:HB2	1:A:136:GLN:HG2	1.98	0.44
1:A:631:TYR:HA	1:A:634:LEU:HG	2.00	0.44
1:A:204:THR:HG23	1:A:213:LEU:CD2	2.48	0.43
1:A:756:ILE:HD13	1:A:791:VAL:HG21	2.01	0.43
1:A:779:VAL:HB	5:A:3003:GOL:H31	2.01	0.43
1:A:692:MET:CE	1:A:717:GLU:HB3	2.49	0.42
1:A:33:TRP:CZ2	1:A:35:PRO:HG3	2.54	0.42
1:A:204:THR:HG21	1:A:212:ASN:O	2.20	0.42
1:A:292:LEU:HD23	1:A:567:MET:HE1	2.01	0.42
1:A:311:VAL:HG21	1:A:350:PHE:HZ	1.85	0.42
1:A:711:TRP:CG	1:A:716:VAL:HG11	2.54	0.42
1:A:300:GLU:HG3	1:A:603:GLN:HE21	1.81	0.41
1:A:655:LEU:HD22	1:A:668:VAL:HG11	2.02	0.41
1:A:35:PRO:HA	1:A:43:TRP:CG	2.56	0.41
1:A:472:ILE:HD13	1:A:477:LEU:HD23	2.03	0.41
1:A:752:LEU:HD13	1:A:860:LEU:HD13	2.02	0.41
1:A:488:GLN:HB2	1:A:496:ILE:HD11	2.03	0.41
1:A:538:HIS:O	1:A:568:VAL:HA	2.21	0.41
1:A:817:LYS:HG3	1:A:852:ILE:HG12	2.02	0.40
1:A:195:LYS:HE3	6:A:4414:HOH:O	2.18	0.40
1:A:570:PRO:HD2	1:A:594:TYR:CD2	2.57	0.40
1:A:865:THR:HG22	1:A:867:GLU:HG3	2.03	0.40
1:A:185:HIS:HB3	6:A:4308:HOH:O	2.21	0.40
1:A:54:VAL:HB	1:A:135:ARG:HB3	2.02	0.40

There are no symmetry-related clashes.

5.3 Torsion angles [i](#)

5.3.1 Protein backbone [i](#)

In the following table, the Percentiles column shows the percent Ramachandran outliers of the chain as a percentile score with respect to all X-ray entries followed by that with respect to entries of similar resolution.

The Analysed column shows the number of residues for which the backbone conformation was analysed, and the total number of residues.

Mol	Chain	Analysed	Favoured	Allowed	Outliers	Percentiles
1	A	863/875 (99%)	819 (95%)	39 (4%)	5 (1%)	25 19

All (5) Ramachandran outliers are listed below:

Mol	Chain	Res	Type
1	A	793	GLN
1	A	50	HIS
1	A	51	SER
1	A	577	LEU
1	A	405	VAL

5.3.2 Protein sidechains [i](#)

In the following table, the Percentiles column shows the percent sidechain outliers of the chain as a percentile score with respect to all X-ray entries followed by that with respect to entries of similar resolution.

The Analysed column shows the number of residues for which the sidechain conformation was analysed, and the total number of residues.

Mol	Chain	Analysed	Rotameric	Outliers	Percentiles
1	A	760/767 (99%)	750 (99%)	10 (1%)	69 74

All (10) residues with a non-rotameric sidechain are listed below:

Mol	Chain	Res	Type
1	A	114	GLU
1	A	132[A]	GLU
1	A	132[B]	GLU
1	A	149	ARG
1	A	322	ASP
1	A	419	ASN
1	A	539	TRP
1	A	707	SER
1	A	801	SER
1	A	839	SER

Some sidechains can be flipped to improve hydrogen bonding and reduce clashes. All (25) such sidechains are listed below:

Mol	Chain	Res	Type
1	A	53	HIS

Continued on next page...

Continued from previous page...

Mol	Chain	Res	Type
1	A	60	ASN
1	A	62	ASN
1	A	71	ASN
1	A	98	HIS
1	A	106	ASN
1	A	107	ASN
1	A	164	GLN
1	A	167	GLN
1	A	183	HIS
1	A	190	HIS
1	A	239	ASN
1	A	295	HIS
1	A	357	ASN
1	A	464	ASN
1	A	465	ASN
1	A	488	GLN
1	A	493	GLN
1	A	497	HIS
1	A	498	ASN
1	A	603	GLN
1	A	625	HIS
1	A	669	HIS
1	A	714	GLN
1	A	802	GLN

5.3.3 RNA [i](#)

There are no RNA molecules in this entry.

5.4 Non-standard residues in protein, DNA, RNA chains [i](#)

There are no non-standard protein/DNA/RNA residues in this entry.

5.5 Carbohydrates [i](#)

4 monosaccharides are modelled in this entry.

In the following table, the Counts columns list the number of bonds (or angles) for which Mogul statistics could be retrieved, the number of bonds (or angles) that are observed in the model and the number of bonds (or angles) that are defined in the Chemical Component Dictionary. The Link column lists molecule types, if any, to which the group is linked. The Z score for a bond

length (or angle) is the number of standard deviations the observed value is removed from the expected value. A bond length (or angle) with $|Z| > 2$ is considered an outlier worth inspection. RMSZ is the root-mean-square of all Z scores of the bond lengths (or angles).

Mol	Type	Chain	Res	Link	Bond lengths			Bond angles		
					Counts	RMSZ	# Z > 2	Counts	RMSZ	# Z > 2
2	NAG	B	1	1,2	14,14,15	0.81	0	17,19,21	1.42	3 (17%)
2	NAG	B	2	2	14,14,15	0.71	1 (7%)	17,19,21	2.12	6 (35%)
2	NAG	C	1	1,2	14,14,15	0.68	0	17,19,21	1.35	2 (11%)
2	NAG	C	2	2	14,14,15	0.62	0	17,19,21	1.62	2 (11%)

In the following table, the Chirals column lists the number of chiral outliers, the number of chiral centers analysed, the number of these observed in the model and the number defined in the Chemical Component Dictionary. Similar counts are reported in the Torsion and Rings columns. '-' means no outliers of that kind were identified.

Mol	Type	Chain	Res	Link	Chirals	Torsions	Rings
2	NAG	B	1	1,2	-	1/6/23/26	0/1/1/1
2	NAG	B	2	2	1/1/5/7	3/6/23/26	0/1/1/1
2	NAG	C	1	1,2	-	0/6/23/26	0/1/1/1
2	NAG	C	2	2	-	2/6/23/26	0/1/1/1

All (1) bond length outliers are listed below:

Mol	Chain	Res	Type	Atoms	Z	Observed(Å)	Ideal(Å)
2	B	2	NAG	C1-C2	2.08	1.55	1.52

All (13) bond angle outliers are listed below:

Mol	Chain	Res	Type	Atoms	Z	Observed(°)	Ideal(°)
2	C	2	NAG	C1-O5-C5	4.68	118.53	112.19
2	B	2	NAG	C4-C3-C2	-3.69	105.62	111.02
2	B	2	NAG	C8-C7-N2	3.64	122.27	116.10
2	B	2	NAG	O5-C5-C6	3.38	112.50	107.20
2	C	1	NAG	O5-C1-C2	-3.33	106.04	111.29
2	B	2	NAG	C1-O5-C5	3.32	116.69	112.19
2	B	2	NAG	O7-C7-C8	-3.13	116.25	122.06
2	B	1	NAG	C8-C7-N2	2.73	120.73	116.10
2	C	2	NAG	C1-C2-N2	2.63	114.99	110.49
2	C	1	NAG	C1-O5-C5	2.55	115.64	112.19
2	B	1	NAG	O4-C4-C5	-2.46	103.19	109.30
2	B	1	NAG	O7-C7-C8	-2.43	117.55	122.06
2	B	2	NAG	O4-C4-C3	2.29	115.65	110.35

All (1) chirality outliers are listed below:

Mol	Chain	Res	Type	Atom
2	B	2	NAG	C1

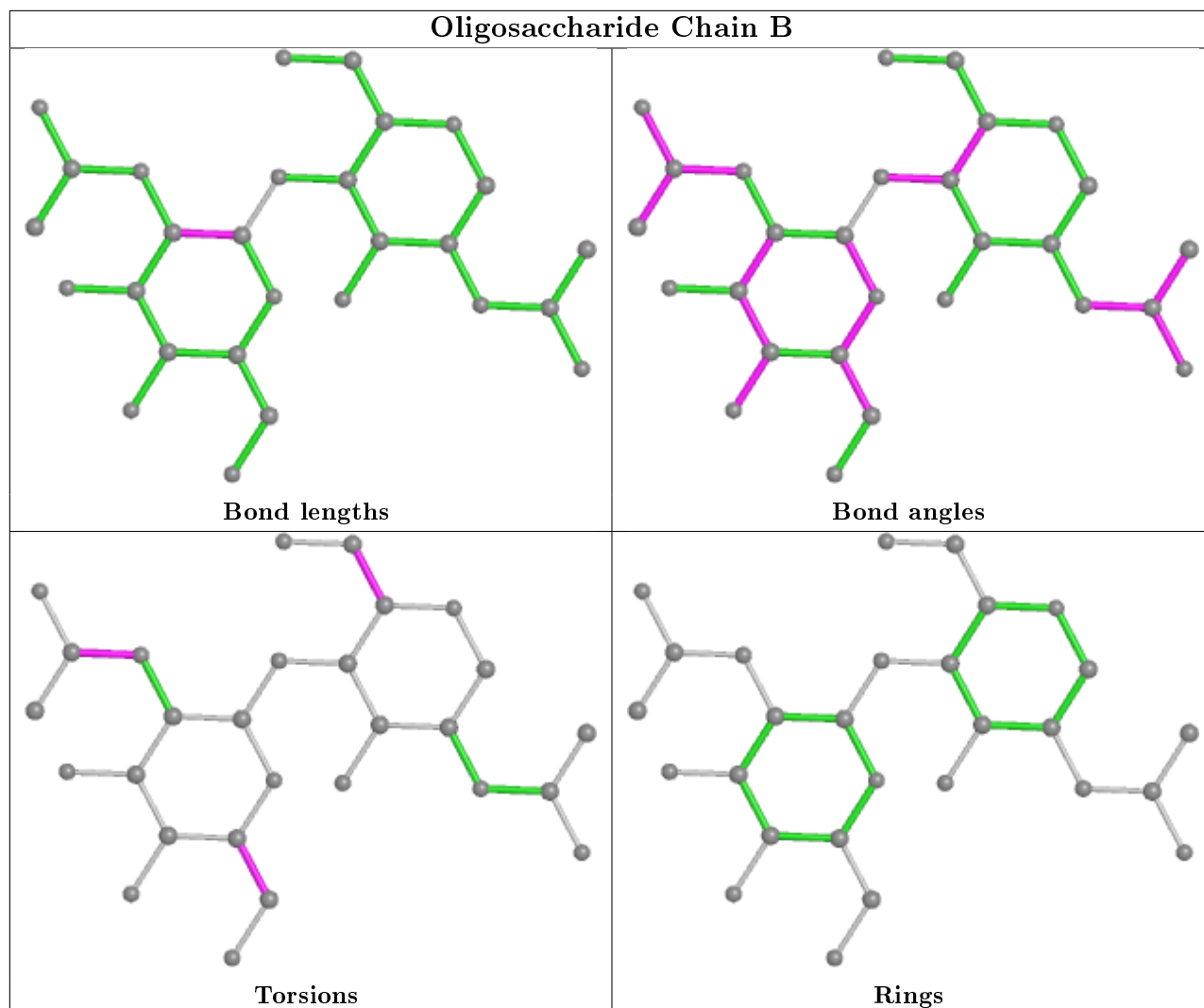
All (6) torsion outliers are listed below:

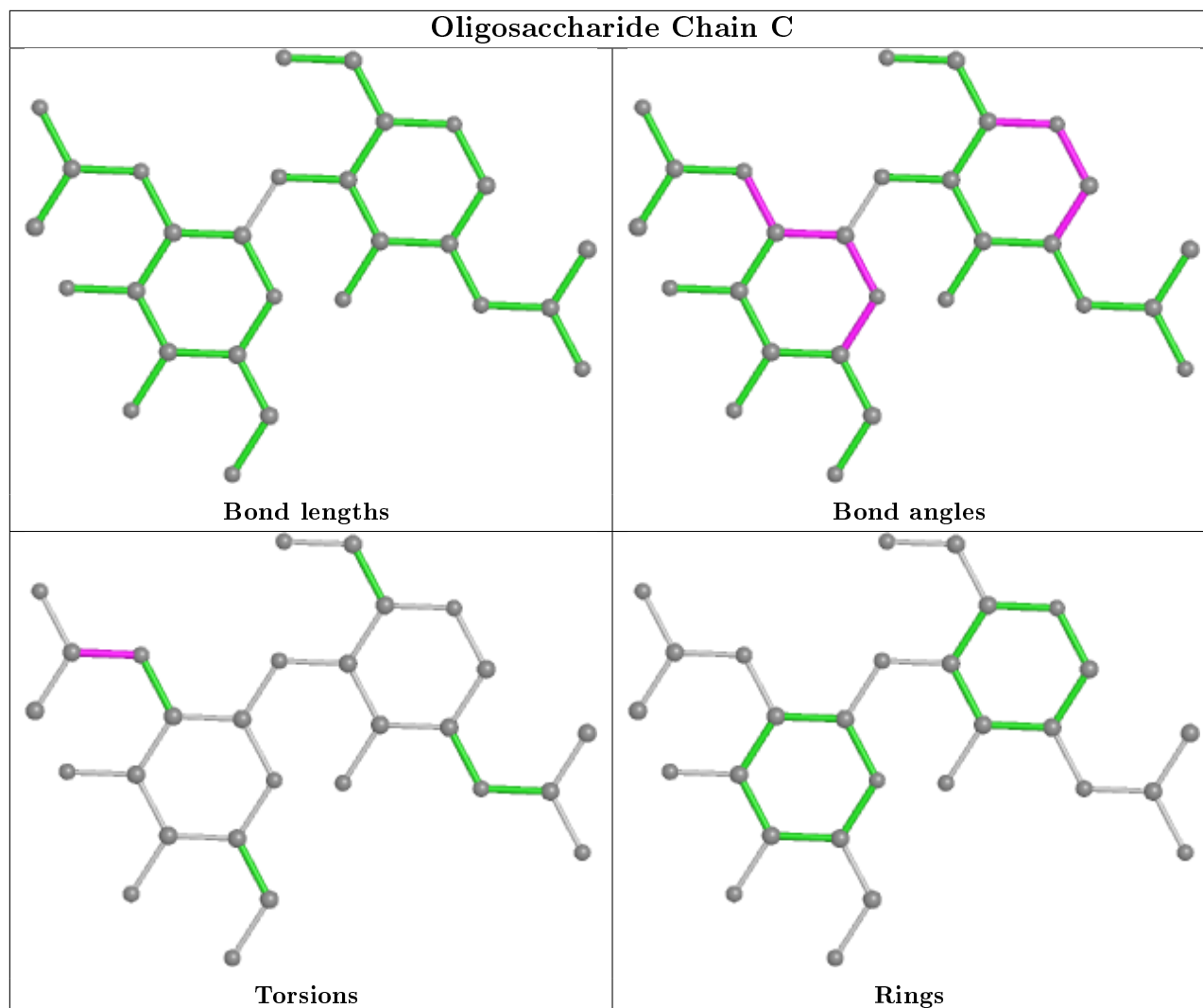
Mol	Chain	Res	Type	Atoms
2	B	2	NAG	C8-C7-N2-C2
2	B	2	NAG	O7-C7-N2-C2
2	C	2	NAG	C8-C7-N2-C2
2	C	2	NAG	O7-C7-N2-C2
2	B	2	NAG	C4-C5-C6-O6
2	B	1	NAG	C4-C5-C6-O6

There are no ring outliers.

No monomer is involved in short contacts.

The following is a two-dimensional graphical depiction of Mogul quality analysis of bond lengths, bond angles, torsion angles, and ring geometry for oligosaccharide.





5.6 Ligand geometry [i](#)

6 ligands are modelled in this entry.

In the following table, the Counts columns list the number of bonds (or angles) for which Mogul statistics could be retrieved, the number of bonds (or angles) that are observed in the model and the number of bonds (or angles) that are defined in the Chemical Component Dictionary. The Link column lists molecule types, if any, to which the group is linked. The Z score for a bond length (or angle) is the number of standard deviations the observed value is removed from the expected value. A bond length (or angle) with $|Z| > 2$ is considered an outlier worth inspection. RMSZ is the root-mean-square of all Z scores of the bond lengths (or angles).

Mol	Type	Chain	Res	Link	Bond lengths			Bond angles		
					Counts	RMSZ	$\# Z > 2$	Counts	RMSZ	$\# Z > 2$
4	NAG	A	2005	1	14,14,15	0.63	0	17,19,21	1.36	2 (11%)
5	GOL	A	3002	-	5,5,5	0.40	0	5,5,5	0.45	0
3	SSD	A	1001	-	11,20,20	0.73	0	10,29,29	1.59	2 (20%)

Mol	Type	Chain	Res	Link	Bond lengths			Bond angles		
					Counts	RMSZ	# Z > 2	Counts	RMSZ	# Z > 2
5	GOL	A	3001	-	5,5,5	0.69	0	5,5,5	0.83	0
5	GOL	A	3004	-	5,5,5	0.35	0	5,5,5	0.37	0
5	GOL	A	3003	-	5,5,5	0.55	0	5,5,5	1.22	1 (20%)

In the following table, the Chirals column lists the number of chiral outliers, the number of chiral centers analysed, the number of these observed in the model and the number defined in the Chemical Component Dictionary. Similar counts are reported in the Torsion and Rings columns. '-' means no outliers of that kind were identified.

Mol	Type	Chain	Res	Link	Chirals	Torsions	Rings
4	NAG	A	2005	1	-	0/6/23/26	0/1/1/1
5	GOL	A	3002	-	-	0/4/4/4	-
3	SSD	A	1001	-	2/2/7/7	0/13/33/33	0/1/1/1
5	GOL	A	3001	-	-	0/4/4/4	-
5	GOL	A	3004	-	-	4/4/4/4	-
5	GOL	A	3003	-	-	4/4/4/4	-

There are no bond length outliers.

All (5) bond angle outliers are listed below:

Mol	Chain	Res	Type	Atoms	Z	Observed(°)	Ideal(°)
4	A	2005	NAG	C1-O5-C5	4.23	117.93	112.19
3	A	1001	SSD	C3-C2-C1	-2.75	103.97	106.41
3	A	1001	SSD	O2-C2-C1	-2.62	106.30	111.27
5	A	3003	GOL	O3-C3-C2	2.23	120.88	110.20
4	A	2005	NAG	C2-N2-C7	2.10	125.89	122.90

All (2) chirality outliers are listed below:

Mol	Chain	Res	Type	Atom
3	A	1001	SSD	C8
3	A	1001	SSD	C9

All (8) torsion outliers are listed below:

Mol	Chain	Res	Type	Atoms
5	A	3004	GOL	O1-C1-C2-C3
5	A	3004	GOL	C1-C2-C3-O3
5	A	3003	GOL	C1-C2-C3-O3
5	A	3003	GOL	O2-C2-C3-O3

Continued on next page...

Continued from previous page...

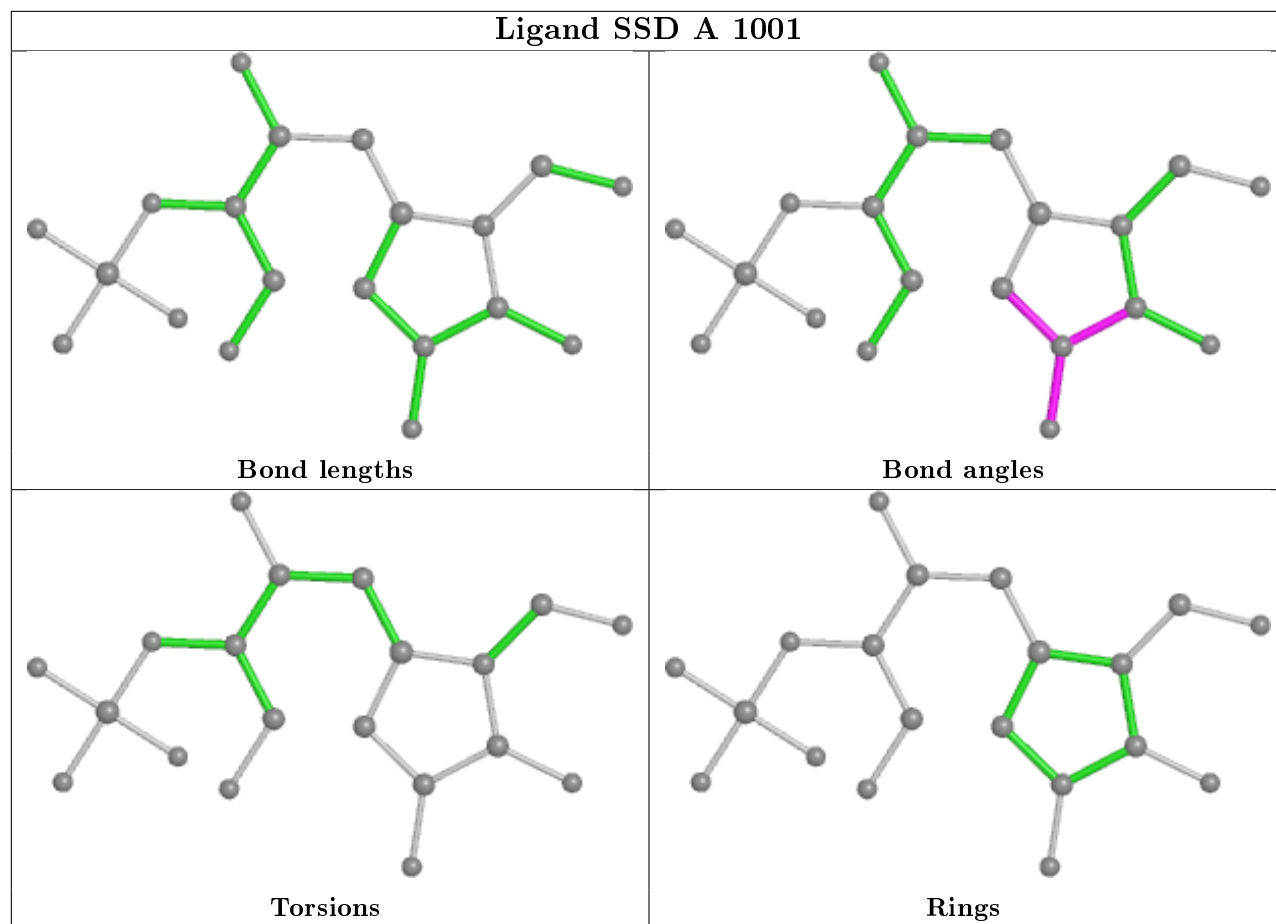
Mol	Chain	Res	Type	Atoms
5	A	3004	GOL	O1-C1-C2-O2
5	A	3004	GOL	O2-C2-C3-O3
5	A	3003	GOL	O1-C1-C2-O2
5	A	3003	GOL	O1-C1-C2-C3

There are no ring outliers.

2 monomers are involved in 7 short contacts:

Mol	Chain	Res	Type	Clashes	Symm-Clashes
5	A	3004	GOL	2	0
5	A	3003	GOL	5	0

The following is a two-dimensional graphical depiction of Mogul quality analysis of bond lengths, bond angles, torsion angles, and ring geometry for all instances of the Ligand of Interest. In addition, ligands with molecular weight > 250 and outliers as shown on the validation Tables will also be included. For torsion angles, if less than 5% of the Mogul distribution of torsion angles is within 10 degrees of the torsion angle in question, then that torsion angle is considered an outlier. Any bond that is central to one or more torsion angles identified as an outlier by Mogul will be highlighted in the graph. For rings, the root-mean-square deviation (RMSD) between the ring in question and similar rings identified by Mogul is calculated over all ring torsion angles. If the average RMSD is greater than 60 degrees and the minimal RMSD between the ring in question and any Mogul-identified rings is also greater than 60 degrees, then that ring is considered an outlier. The outliers are highlighted in purple. The color gray indicates Mogul did not find sufficient equivalents in the CSD to analyse the geometry.



5.7 Other polymers [\(i\)](#)

There are no such residues in this entry.

5.8 Polymer linkage issues [\(i\)](#)

There are no chain breaks in this entry.

6 Fit of model and data [i](#)

6.1 Protein, DNA and RNA chains [i](#)

In the following table, the column labelled '#RSRZ> 2' contains the number (and percentage) of RSRZ outliers, followed by percent RSRZ outliers for the chain as percentile scores relative to all X-ray entries and entries of similar resolution. The OWAB column contains the minimum, median, 95th percentile and maximum values of the occupancy-weighted average B-factor per residue. The column labelled 'Q< 0.9' lists the number of (and percentage) of residues with an average occupancy less than 0.9.

Mol	Chain	Analysed	<RSRZ>	#RSRZ>2	OWAB(Å ²)	Q<0.9
1	A	863/875 (98%)	0.32	66 (7%) 13 13	20, 33, 52, 74	0

All (66) RSRZ outliers are listed below:

Mol	Chain	Res	Type	RSRZ
1	A	838	THR	5.7
1	A	50	HIS	5.4
1	A	36	GLN	5.3
1	A	77	VAL	5.1
1	A	74	SER	4.9
1	A	80	SER	4.9
1	A	376	SER	4.6
1	A	75	SER	4.5
1	A	835	PRO	4.4
1	A	375	SER	4.4
1	A	79	GLY	4.3
1	A	72	LEU	4.3
1	A	117	GLN	4.3
1	A	76	PRO	4.1
1	A	73	PRO	3.9
1	A	832	ASN	3.9
1	A	37	GLY	3.8
1	A	836	SER	3.7
1	A	717	GLU	3.7
1	A	710	ARG	3.6
1	A	135	ARG	3.5
1	A	48	LYS	3.4
1	A	433	ASN	3.4
1	A	121	GLY	3.3
1	A	616	ASP	3.3
1	A	49	ASN	3.3
1	A	796	LEU	3.3

Continued on next page...

Continued from previous page...

Mol	Chain	Res	Type	RSRZ
1	A	374	SER	3.2
1	A	8	ASN	3.1
1	A	106	ASN	3.1
1	A	692	MET	3.0
1	A	83	ASP	2.9
1	A	834	VAL	2.9
1	A	831	HIS	2.8
1	A	396	ASP	2.8
1	A	793	GLN	2.8
1	A	866	VAL	2.8
1	A	482	LEU	2.8
1	A	777	ASP	2.7
1	A	120	SER	2.7
1	A	870	HIS	2.7
1	A	377	LYS	2.7
1	A	7	VAL	2.6
1	A	518	ASN	2.6
1	A	792	THR	2.5
1	A	826	ASN	2.5
1	A	191	ASP	2.5
1	A	818	ILE	2.5
1	A	341	SER	2.5
1	A	51	SER	2.5
1	A	27	ASP	2.5
1	A	801	SER	2.4
1	A	869	ALA	2.3
1	A	342	VAL	2.2
1	A	638	TYR	2.2
1	A	126	SER	2.2
1	A	378	PRO	2.2
1	A	610	PRO	2.2
1	A	105	THR	2.2
1	A	204	THR	2.2
1	A	39	VAL	2.2
1	A	769	PHE	2.1
1	A	326	ALA	2.1
1	A	26	CYS	2.1
1	A	28	GLN	2.1
1	A	397	GLY	2.1

6.2 Non-standard residues in protein, DNA, RNA chains [i](#)

There are no non-standard protein/DNA/RNA residues in this entry.

6.3 Carbohydrates [i](#)

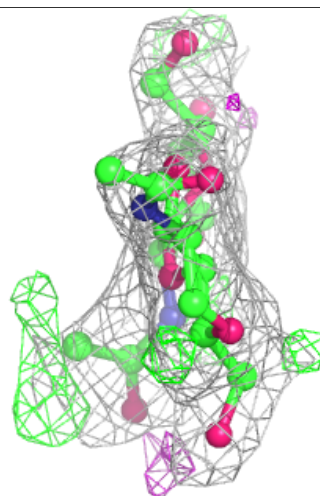
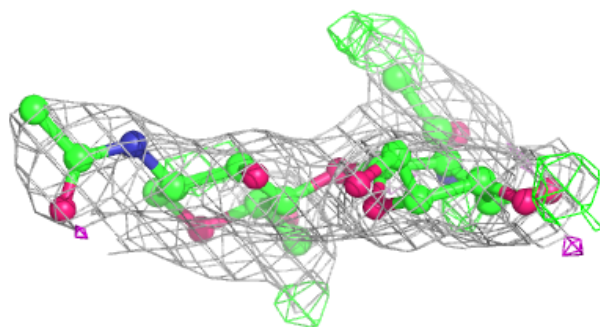
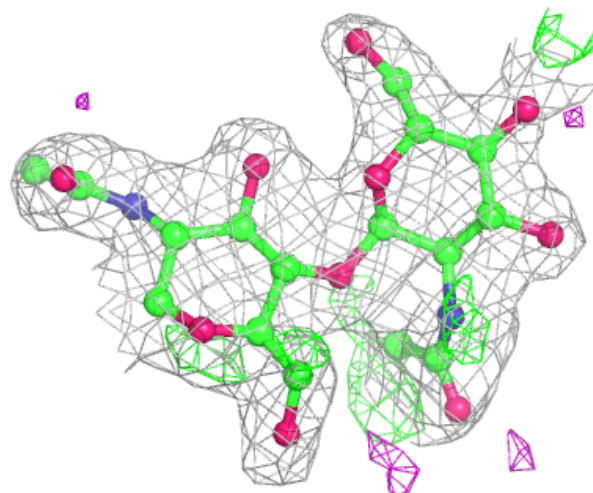
In the following table, the Atoms column lists the number of modelled atoms in the group and the number defined in the chemical component dictionary. The B-factors column lists the minimum, median, 95th percentile and maximum values of B factors of atoms in the group. The column labelled 'Q< 0.9' lists the number of atoms with occupancy less than 0.9.

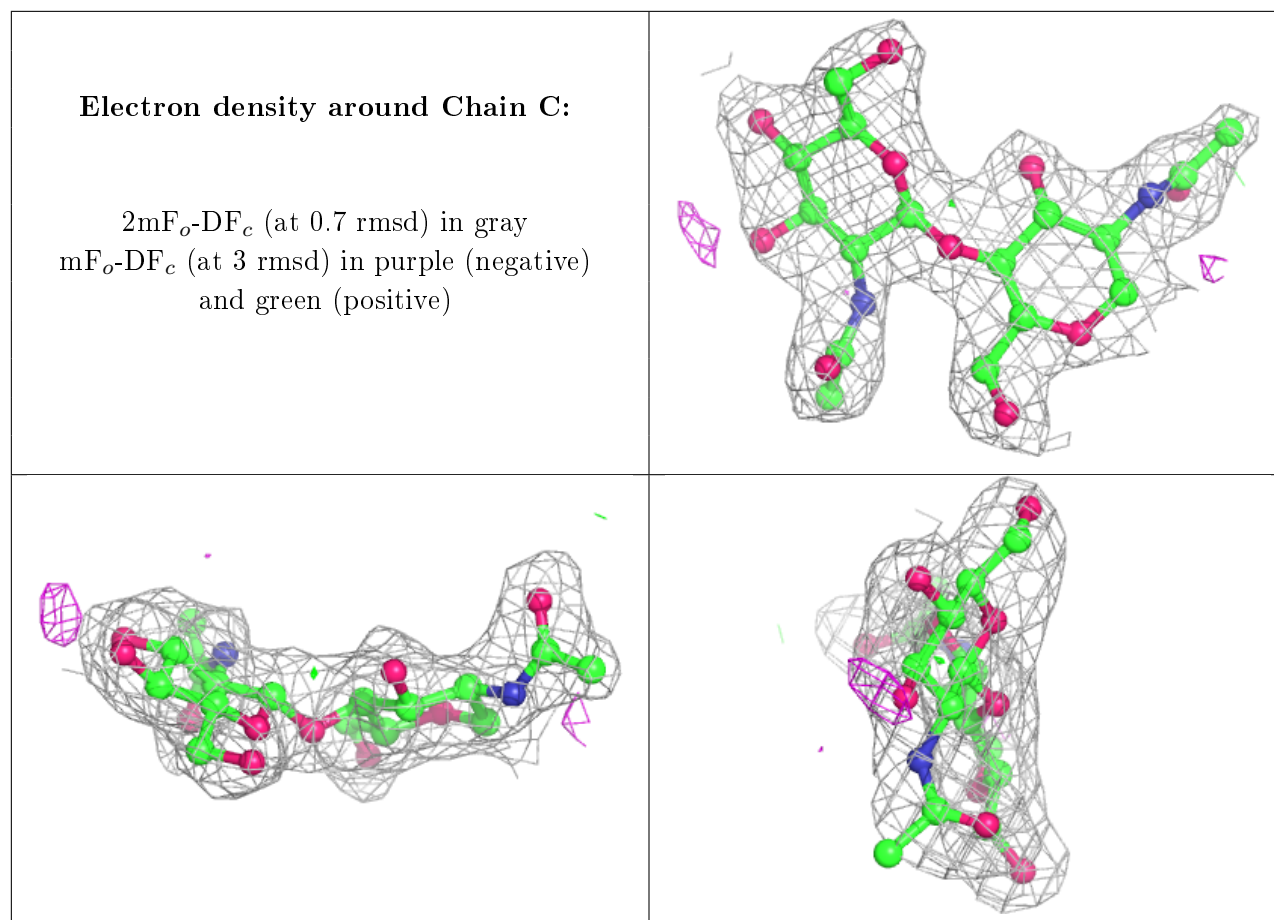
Mol	Type	Chain	Res	Atoms	RSCC	RSR	B-factors(Å ²)	Q<0.9
2	NAG	B	2	14/15	0.77	0.29	58,61,63,63	0
2	NAG	C	2	14/15	0.90	0.21	53,57,59,60	0
2	NAG	B	1	14/15	0.92	0.17	38,42,49,54	0
2	NAG	C	1	14/15	0.94	0.11	42,44,47,48	0

The following is a graphical depiction of the model fit to experimental electron density for oligosaccharide. Each fit is shown from different orientation to approximate a three-dimensional view.

Electron density around Chain B:

$2mF_o-DF_c$ (at 0.7 rmsd) in gray
 mF_o-DF_c (at 3 rmsd) in purple (negative)
and green (positive)



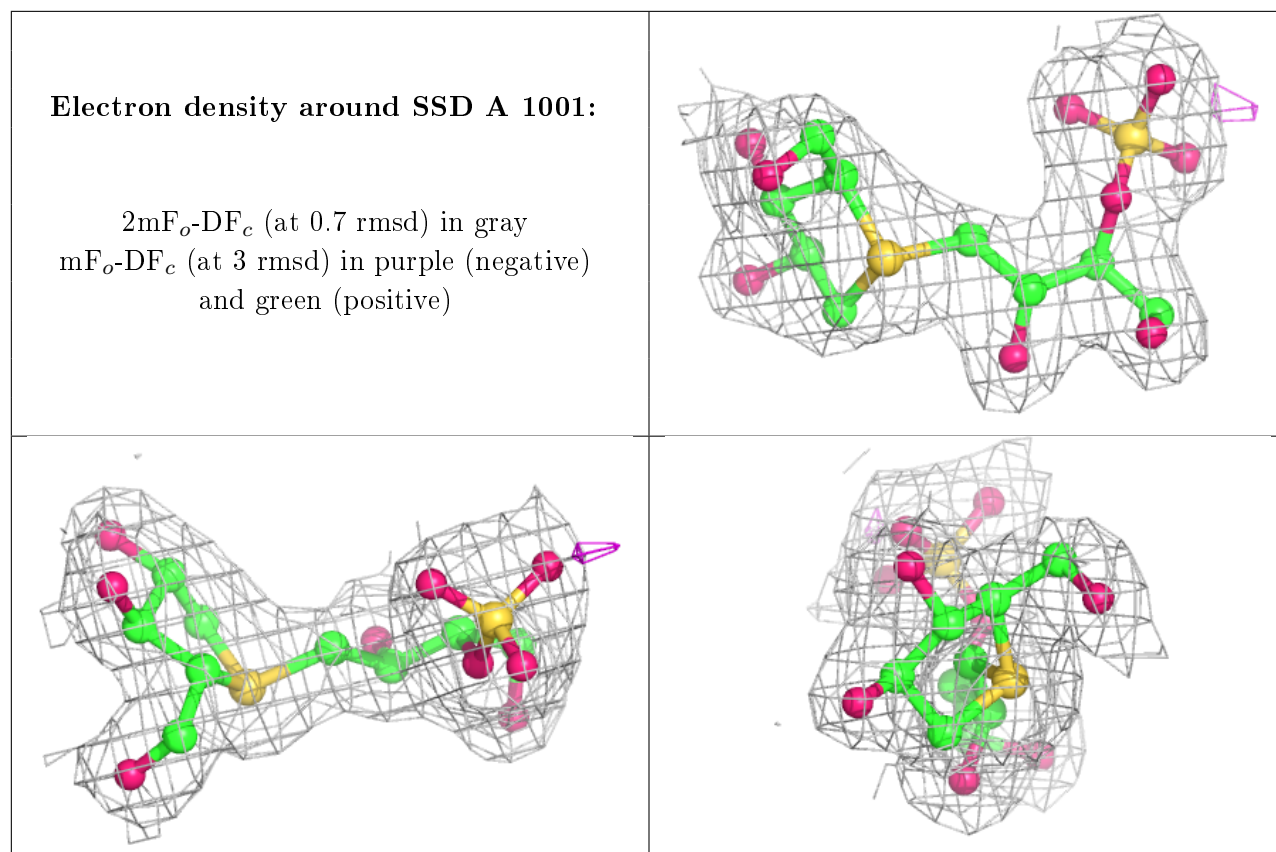


6.4 Ligands [\(i\)](#)

In the following table, the Atoms column lists the number of modelled atoms in the group and the number defined in the chemical component dictionary. The B-factors column lists the minimum, median, 95th percentile and maximum values of B factors of atoms in the group. The column labelled 'Q<0.9' lists the number of atoms with occupancy less than 0.9.

Mol	Type	Chain	Res	Atoms	RSCC	RSR	B-factors(\AA^2)	Q<0.9
5	GOL	A	3003	6/6	0.70	0.27	51,56,58,59	0
4	NAG	A	2005	14/15	0.88	0.41	58,62,66,66	0
5	GOL	A	3004	6/6	0.90	0.16	49,55,56,58	0
5	GOL	A	3001	6/6	0.92	0.21	36,39,41,43	0
5	GOL	A	3002	6/6	0.93	0.15	55,60,61,62	0
3	SSD	A	1001	20/20	0.95	0.10	33,39,44,45	0

The following is a graphical depiction of the model fit to experimental electron density of all instances of the Ligand of Interest. In addition, ligands with molecular weight > 250 and outliers as shown on the geometry validation Tables will also be included. Each fit is shown from different orientation to approximate a three-dimensional view.



6.5 Other polymers [i](#)

There are no such residues in this entry.