



Full wwPDB X-ray Structure Validation Report ⓘ

Nov 2, 2023 – 09:13 AM EDT

PDB ID : 3KDS
Title : apo-FtsH crystal structure
Authors : Bieniossek, C.; Niederhauser, B.; Baumann, U.
Deposited on : 2009-10-23
Resolution : 2.60 Å(reported)

This is a Full wwPDB X-ray Structure Validation Report for a publicly released PDB entry.

We welcome your comments at validation@mail.wwpdb.org

A user guide is available at

<https://www.wwpdb.org/validation/2017/XrayValidationReportHelp>

with specific help available everywhere you see the ⓘ symbol.

The types of validation reports are described at

<http://www.wwpdb.org/validation/2017/FAQs#types>.

The following versions of software and data (see [references ⓘ](#)) were used in the production of this report:

MolProbity : 4.02b-467
Mogul : 1.8.5 (274361), CSD as541be (2020)
Xtriage (Phenix) : 1.13
EDS : 2.36
buster-report : 1.1.7 (2018)
Percentile statistics : 20191225.v01 (using entries in the PDB archive December 25th 2019)
Refmac : 5.8.0158
CCP4 : 7.0.044 (Gargrove)
Ideal geometry (proteins) : Engh & Huber (2001)
Ideal geometry (DNA, RNA) : Parkinson et al. (1996)
Validation Pipeline (wwPDB-VP) : 2.36

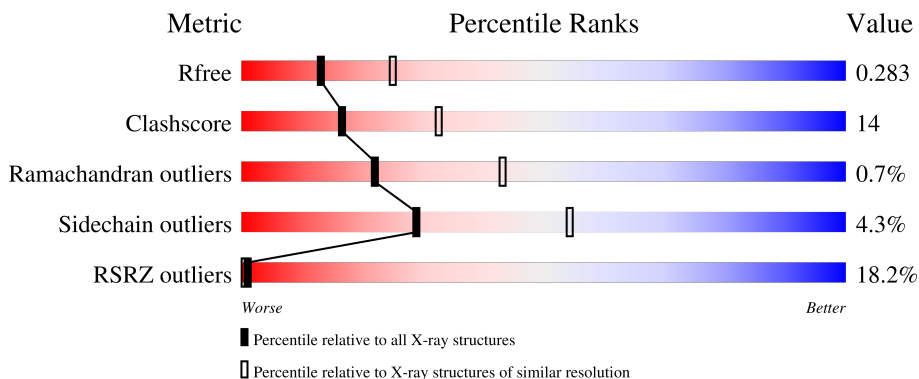
1 Overall quality at a glance

The following experimental techniques were used to determine the structure:

X-RAY DIFFRACTION

The reported resolution of this entry is 2.60 Å.

Percentile scores (ranging between 0-100) for global validation metrics of the entry are shown in the following graphic. The table shows the number of entries on which the scores are based.



Metric	Whole archive (#Entries)	Similar resolution (#Entries, resolution range(Å))
R_{free}	130704	3163 (2.60-2.60)
Clashscore	141614	3518 (2.60-2.60)
Ramachandran outliers	138981	3455 (2.60-2.60)
Sidechain outliers	138945	3455 (2.60-2.60)
RSRZ outliers	127900	3104 (2.60-2.60)

The table below summarises the geometric issues observed across the polymeric chains and their fit to the electron density. The red, orange, yellow and green segments of the lower bar indicate the fraction of residues that contain outliers for ≥ 3 , 2, 1 and 0 types of geometric quality criteria respectively. A grey segment represents the fraction of residues that are not modelled. The numeric value for each fraction is indicated below the corresponding segment, with a dot representing fractions $\leq 5\%$. The upper red bar (where present) indicates the fraction of residues that have poor fit to the electron density. The numeric value is given above the bar.

Mol	Chain	Length	Quality of chain
1	E	465	
1	F	465	
1	G	465	

2 Entry composition i

There are 3 unique types of molecules in this entry. The entry contains 9994 atoms, of which 0 are hydrogens and 0 are deuteriums.

In the tables below, the ZeroOcc column contains the number of atoms modelled with zero occupancy, the AltConf column contains the number of residues with at least one atom in alternate conformation and the Trace column contains the number of residues modelled with at most 2 atoms.

- Molecule 1 is a protein called Cell division protein FtsH.

Mol	Chain	Residues	Atoms					ZeroOcc	AltConf	Trace
			Total	C	N	O	S			
1	E	427	3301	2083	584	624	10	0	0	0
1	F	426	3295	2080	583	622	10	0	0	0
1	G	426	3296	2080	583	623	10	0	0	0

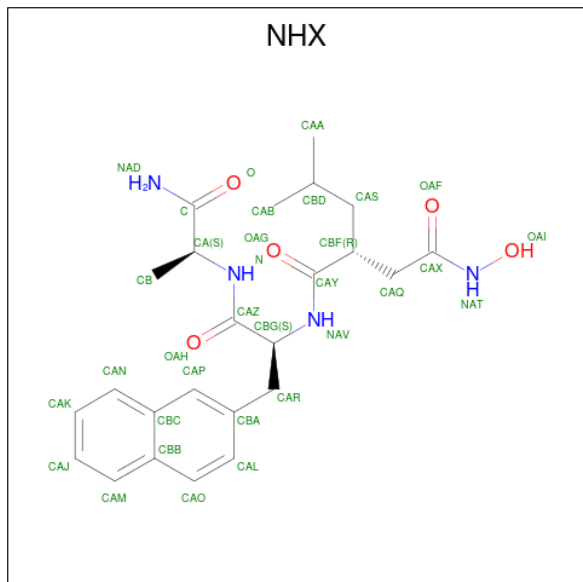
There are 12 discrepancies between the modelled and reference sequences:

Chain	Residue	Modelled	Actual	Comment	Reference
E	146	MET	-	expression tag	UNP Q9WZ49
E	207	ALA	LYS	engineered mutation	UNP Q9WZ49
E	410	LEU	LYS	engineered mutation	UNP Q9WZ49
E	415	ALA	LYS	engineered mutation	UNP Q9WZ49
F	146	MET	-	expression tag	UNP Q9WZ49
F	207	ALA	LYS	engineered mutation	UNP Q9WZ49
F	410	LEU	LYS	engineered mutation	UNP Q9WZ49
F	415	ALA	LYS	engineered mutation	UNP Q9WZ49
G	146	MET	-	expression tag	UNP Q9WZ49
G	207	ALA	LYS	engineered mutation	UNP Q9WZ49
G	410	LEU	LYS	engineered mutation	UNP Q9WZ49
G	415	ALA	LYS	engineered mutation	UNP Q9WZ49

- Molecule 2 is ZINC ION (three-letter code: ZN) (formula: Zn).

Mol	Chain	Residues	Atoms		ZeroOcc	AltConf
2	E	1	Total 1	Zn 1	0	0
2	F	1	Total 1	Zn 1	0	0
2	G	1	Total 1	Zn 1	0	0

- Molecule 3 is N-{(2R)-2-[2-(hydroxyamino)-2-oxoethyl]-4-methylpentanoyl}-3-naphthalen-2-yl-L-alanyl-L-alaninamide (three-letter code: NHX) (formula: C₂₄H₃₂N₄O₅).

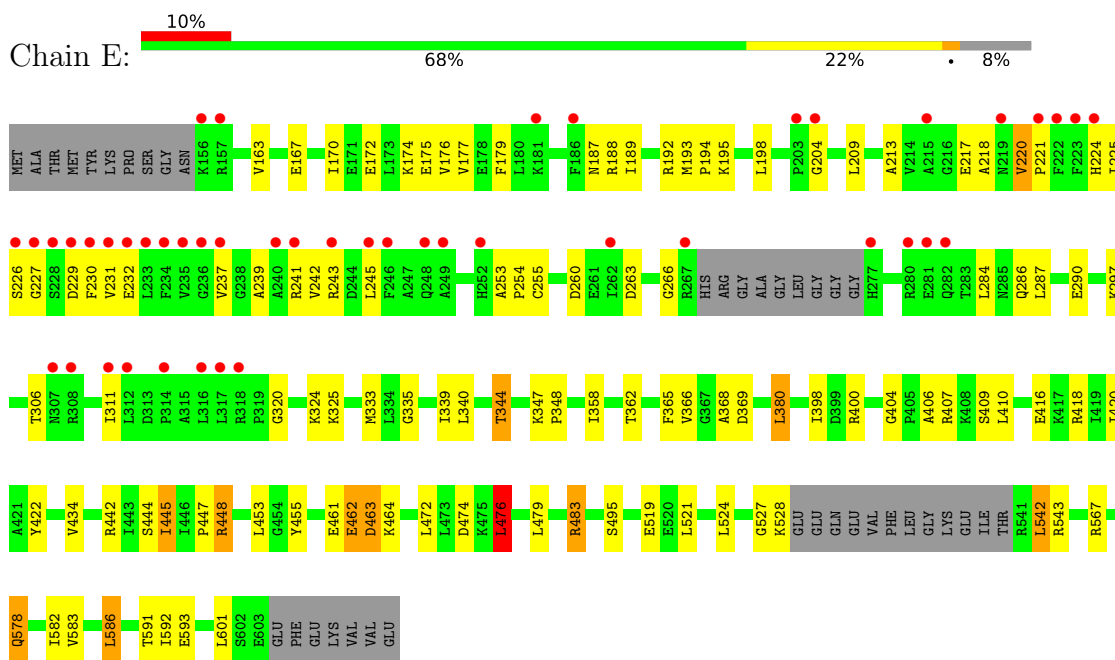


Mol	Chain	Residues	Atoms				ZeroOcc	AltConf
			Total	C	N	O		
3	E	1	33	24	4	5	0	0
3	F	1	33	24	4	5	0	0
3	G	1	33	24	4	5	0	0

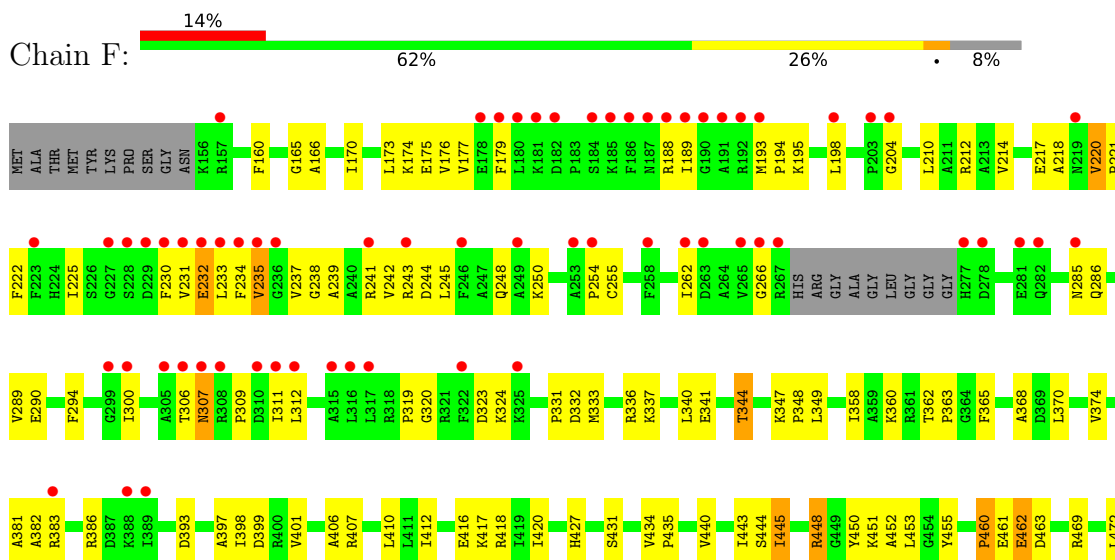
3 Residue-property plots

These plots are drawn for all protein, RNA, DNA and oligosaccharide chains in the entry. The first graphic for a chain summarises the proportions of the various outlier classes displayed in the second graphic. The second graphic shows the sequence view annotated by issues in geometry and electron density. Residues are color-coded according to the number of geometric quality criteria for which they contain at least one outlier: green = 0, yellow = 1, orange = 2 and red = 3 or more. A red dot above a residue indicates a poor fit to the electron density ($RSRZ > 2$). Stretches of 2 or more consecutive residues without any outlier are shown as a green connector. Residues present in the sample, but not in the model, are shown in grey.

- Molecule 1: Cell division protein FtsH

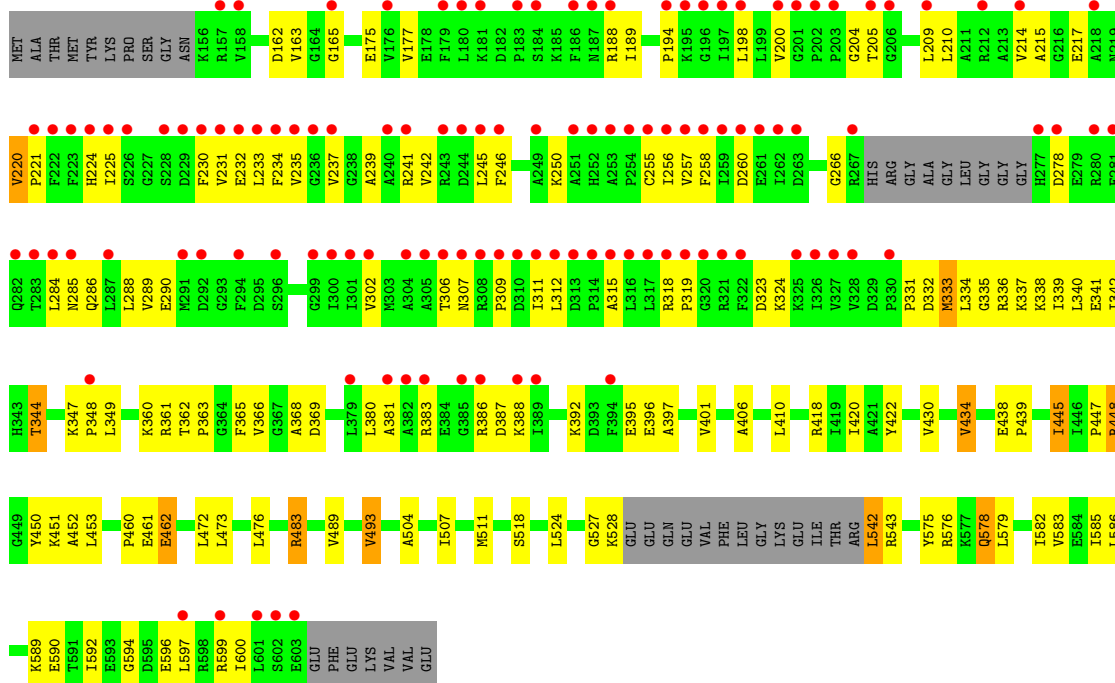


- Molecule 1: Cell division protein FtsH





● Molecule 1: Cell division protein FtsH



4 Data and refinement statistics

Property	Value	Source
Space group	P 6 2 2	Depositor
Cell constants a, b, c, α , β , γ	190.50Å 190.50Å 152.13Å 90.00° 90.00° 120.00°	Depositor
Resolution (Å)	45.76 – 2.60 48.47 – 2.60	Depositor EDS
% Data completeness (in resolution range)	99.7 (45.76-2.60) 99.7 (48.47-2.60)	Depositor EDS
R_{merge}	0.08	Depositor
R_{sym}	(Not available)	Depositor
$\langle I/\sigma(I) \rangle$ ¹	2.28 (at 2.61Å)	Xtrriage
Refinement program	PHENIX 1.5_2	Depositor
R, R_{free}	0.223 , 0.287 0.219 , 0.283	Depositor DCC
R_{free} test set	1987 reflections (3.96%)	wwPDB-VP
Wilson B-factor (Å ²)	64.3	Xtrriage
Anisotropy	0.161	Xtrriage
Bulk solvent k_{sol} (e/Å ³), B_{sol} (Å ²)	0.31 , 70.4	EDS
L-test for twinning ²	$\langle L \rangle = 0.48$, $\langle L^2 \rangle = 0.31$	Xtrriage
Estimated twinning fraction	No twinning to report.	Xtrriage
F_o, F_c correlation	0.94	EDS
Total number of atoms	9994	wwPDB-VP
Average B, all atoms (Å ²)	117.0	wwPDB-VP

Xtrriage's analysis on translational NCS is as follows: *The analyses of the Patterson function reveals a significant off-origin peak that is 24.09 % of the origin peak, indicating pseudo-translational symmetry. The chance of finding a peak of this or larger height randomly in a structure without pseudo-translational symmetry is equal to 4.1018e-03. The detected translational NCS is most likely also responsible for the elevated intensity ratio.*

¹Intensities estimated from amplitudes.

²Theoretical values of $\langle |L| \rangle$, $\langle L^2 \rangle$ for acentric reflections are 0.5, 0.333 respectively for untwinned datasets, and 0.375, 0.2 for perfectly twinned datasets.

5 Model quality

5.1 Standard geometry

Bond lengths and bond angles in the following residue types are not validated in this section: NHX, ZN

The Z score for a bond length (or angle) is the number of standard deviations the observed value is removed from the expected value. A bond length (or angle) with $|Z| > 5$ is considered an outlier worth inspection. RMSZ is the root-mean-square of all Z scores of the bond lengths (or angles).

Mol	Chain	Bond lengths		Bond angles	
		RMSZ	# Z >5	RMSZ	# Z >5
1	E	0.52	0/3348	0.79	7/4519 (0.2%)
1	F	0.45	0/3342	0.64	3/4511 (0.1%)
1	G	0.41	0/3343	0.62	2/4512 (0.0%)
All	All	0.46	0/10033	0.69	12/13542 (0.1%)

There are no bond length outliers.

All (12) bond angle outliers are listed below:

Mol	Chain	Res	Type	Atoms	Z	Observed(°)	Ideal(°)
1	E	483	ARG	NE-CZ-NH2	-11.12	114.74	120.30
1	E	483	ARG	NE-CZ-NH1	8.32	124.46	120.30
1	G	483	ARG	CG-CD-NE	-8.21	94.55	111.80
1	G	483	ARG	NE-CZ-NH2	-7.87	116.36	120.30
1	E	483	ARG	CG-CD-NE	-7.03	97.03	111.80
1	E	418	ARG	NE-CZ-NH1	-6.34	117.13	120.30
1	F	469	ARG	NE-CZ-NH2	-5.97	117.31	120.30
1	E	586	LEU	CA-CB-CG	5.54	128.04	115.30
1	E	524	LEU	CA-CB-CG	5.49	127.92	115.30
1	F	483	ARG	NE-CZ-NH2	-5.45	117.57	120.30
1	E	476	LEU	CB-CG-CD2	-5.18	102.20	111.00
1	F	469	ARG	CG-CD-NE	-5.15	100.99	111.80

There are no chirality outliers.

There are no planarity outliers.

5.2 Too-close contacts

In the following table, the Non-H and H(model) columns list the number of non-hydrogen atoms and hydrogen atoms in the chain respectively. The H(added) column lists the number of hydrogen

atoms added and optimized by MolProbity. The Clashes column lists the number of clashes within the asymmetric unit, whereas Symm-Clashes lists symmetry-related clashes.

Mol	Chain	Non-H	H(model)	H(added)	Clashes	Symm-Clashes
1	E	3301	0	3364	83	0
1	F	3295	0	3362	97	0
1	G	3296	0	3362	99	0
2	E	1	0	0	0	0
2	F	1	0	0	0	0
2	G	1	0	0	0	0
3	E	33	0	31	7	0
3	F	33	0	31	5	0
3	G	33	0	31	4	0
All	All	9994	0	10181	287	0

The all-atom clashscore is defined as the number of clashes found per 1000 atoms (including hydrogen atoms). The all-atom clashscore for this structure is 14.

All (287) close contacts within the same asymmetric unit are listed below, sorted by their clash magnitude.

Atom-1	Atom-2	Interatomic distance (Å)	Clash overlap (Å)
1:E:204:GLY:HA3	1:E:368:ALA:HB2	1.31	1.12
3:E:998:NHX:OAH	3:E:998:NHX:HAP	1.62	0.98
1:F:542:LEU:HD13	1:F:543:ARG:H	1.28	0.95
1:G:204:GLY:HA3	1:G:368:ALA:HB2	1.47	0.94
3:E:998:NHX:HAP	3:E:998:NHX:CAZ	2.01	0.88
1:F:340:LEU:O	1:F:344:THR:HB	1.75	0.87
1:G:410:LEU:HD11	1:G:447:PRO:HG2	1.57	0.85
1:F:204:GLY:HA3	1:F:368:ALA:HB2	1.60	0.84
1:E:462:GLU:O	1:E:463:ASP:HB2	1.79	0.81
1:F:461:GLU:HG3	1:F:461:GLU:O	1.81	0.79
1:G:542:LEU:HD13	1:G:543:ARG:H	1.47	0.77
1:F:233:LEU:HD13	1:F:237:VAL:HG12	1.65	0.75
1:E:410:LEU:HD11	1:E:447:PRO:HG2	1.68	0.75
3:F:998:NHX:CAZ	3:F:998:NHX:HAP	2.18	0.73
1:F:337:LYS:O	1:F:341:GLU:HG3	1.88	0.73
1:G:266:GLY:HA2	1:G:284:LEU:HD13	1.72	0.72
1:E:340:LEU:O	1:E:344:THR:HB	1.90	0.70
1:E:225:ILE:HG13	1:E:245:LEU:HD22	1.73	0.69
1:E:410:LEU:HD12	1:E:410:LEU:O	1.92	0.68
1:E:586:LEU:HD13	1:E:592:ILE:HG22	1.74	0.68
1:F:225:ILE:HG13	1:F:245:LEU:HD22	1.75	0.67
1:G:340:LEU:O	1:G:344:THR:HB	1.95	0.67

Continued on next page...

Continued from previous page...

Atom-1	Atom-2	Interatomic distance (Å)	Clash overlap (Å)
1:G:231:VAL:O	1:G:232:GLU:HB2	1.95	0.66
1:F:231:VAL:O	1:F:232:GLU:HB2	1.93	0.66
1:E:231:VAL:O	1:E:232:GLU:HB2	1.96	0.66
1:F:460:PRO:O	1:F:461:GLU:HG2	1.96	0.66
1:F:225:ILE:HG13	1:F:245:LEU:CD2	2.26	0.65
1:G:410:LEU:O	1:G:410:LEU:HD12	1.96	0.65
1:F:358:ILE:HG23	1:F:398:ILE:HD11	1.78	0.65
1:F:344:THR:OG1	1:F:349:LEU:HD11	1.97	0.65
1:F:382:ALA:HB2	1:G:189:ILE:HD11	1.79	0.65
3:E:998:NHX:CAZ	3:E:998:NHX:CAP	2.76	0.65
1:E:542:LEU:HD13	1:E:543:ARG:H	1.61	0.64
1:F:453:LEU:HB2	3:F:998:NHX:HAB	1.78	0.64
1:F:383:ARG:HE	1:G:175:GLU:HB3	1.62	0.64
1:G:188:ARG:HG3	1:G:189:ILE:HG23	1.80	0.64
1:G:542:LEU:HD13	1:G:543:ARG:N	2.13	0.64
1:F:586:LEU:O	1:F:590:GLU:HA	1.97	0.63
1:E:188:ARG:HG3	1:E:189:ILE:HG23	1.81	0.63
1:G:361:ARG:NH1	1:G:395:GLU:HG2	2.14	0.63
1:G:220:VAL:HG13	1:G:255:CYS:HA	1.81	0.62
1:G:461:GLU:O	1:G:462:GLU:HB2	2.00	0.62
1:G:483:ARG:HD2	1:G:493:VAL:HG22	1.82	0.61
1:E:434:VAL:HG22	1:E:567:ARG:NH2	2.15	0.61
1:E:578:GLN:HG3	1:E:601:LEU:HD23	1.82	0.61
1:E:179:PHE:CG	1:E:193:MET:HG3	2.36	0.60
1:G:366:VAL:HG22	1:G:369:ASP:OD2	2.00	0.60
1:G:586:LEU:HD13	1:G:592:ILE:HG22	1.84	0.60
1:E:220:VAL:HG13	1:E:255:CYS:HA	1.83	0.60
1:E:578:GLN:CD	1:E:578:GLN:H	2.05	0.59
1:E:266:GLY:HA2	1:E:284:LEU:HD13	1.82	0.59
1:G:344:THR:OG1	1:G:349:LEU:HD11	2.02	0.59
1:F:483:ARG:HD2	1:F:493:VAL:HG22	1.83	0.59
1:G:397:ALA:O	1:G:401:VAL:HG23	2.03	0.58
1:F:460:PRO:HB3	1:F:462:GLU:HG3	1.86	0.58
1:E:442:ARG:HD3	1:E:593:GLU:OE2	2.03	0.58
1:E:461:GLU:H	1:E:462:GLU:HG3	1.69	0.57
1:F:230:PHE:CE2	1:F:241:ARG:HB2	2.40	0.57
1:F:596:GLU:O	1:F:600:ILE:HG13	2.05	0.57
1:G:579:LEU:O	1:G:583:VAL:HG23	2.04	0.57
1:F:170:ILE:O	1:F:174:LYS:HG3	2.05	0.56
1:E:224:HIS:O	1:E:225:ILE:HD13	2.04	0.56
1:G:507:ILE:O	1:G:511:MET:HG3	2.05	0.56

Continued on next page...

Continued from previous page...

Atom-1	Atom-2	Interatomic distance (Å)	Clash overlap (Å)
1:F:407:ARG:HB3	1:F:410:LEU:HD13	1.87	0.56
1:F:445:ILE:HG23	1:F:445:ILE:O	2.06	0.56
1:F:462:GLU:CD	1:F:463:ASP:H	2.09	0.56
1:G:220:VAL:HG22	1:G:221:PRO:HD2	1.86	0.56
1:F:578:GLN:CD	1:F:578:GLN:H	2.08	0.56
1:E:194:PRO:HG3	1:E:324:LYS:HD3	1.87	0.55
1:G:258:PHE:CE2	1:G:260:ASP:HB2	2.42	0.55
1:E:362:THR:HG22	1:E:365:PHE:CE2	2.42	0.55
1:F:188:ARG:HG3	1:F:189:ILE:HG23	1.87	0.55
1:F:362:THR:N	1:F:363:PRO:HD3	2.22	0.55
1:G:257:VAL:HB	1:G:302:VAL:HG22	1.89	0.55
1:E:225:ILE:HG13	1:E:245:LEU:CD2	2.36	0.55
1:F:160:PHE:CE1	1:F:217:GLU:HG2	2.41	0.55
1:F:445:ILE:O	1:F:445:ILE:CG2	2.54	0.55
1:F:462:GLU:O	1:F:463:ASP:HB2	2.06	0.55
1:G:163:VAL:HG22	1:G:209:LEU:HG	1.89	0.55
1:E:462:GLU:HB3	1:E:464:LYS:HE3	1.88	0.54
1:F:434:VAL:CG1	1:F:474:ASP:HB3	2.38	0.54
1:G:165:GLY:HA3	1:G:331:PRO:HB3	1.90	0.54
1:F:360:LYS:O	1:F:460:PRO:HG2	2.07	0.54
3:F:998:NHX:HABB	3:F:998:NHX:CAY	2.37	0.54
1:E:462:GLU:CD	1:E:463:ASP:H	2.12	0.53
1:F:234:PHE:CD2	1:F:235:VAL:N	2.76	0.53
1:F:370:LEU:O	1:F:374:VAL:HG23	2.08	0.53
1:G:306:THR:HG21	1:G:312:LEU:HD11	1.90	0.53
3:E:998:NHX:HAA	3:E:998:NHX:CAY	2.39	0.53
1:E:195:LYS:HD3	1:E:320:GLY:O	2.08	0.53
1:E:434:VAL:CG1	1:E:474:ASP:HB3	2.39	0.53
1:F:230:PHE:HE2	1:F:241:ARG:HB2	1.74	0.52
1:G:582:ILE:O	1:G:586:LEU:HB2	2.10	0.52
1:E:192:ARG:O	1:E:192:ARG:HG3	2.08	0.52
1:G:362:THR:O	1:G:365:PHE:HB2	2.09	0.52
1:E:462:GLU:HB2	1:E:464:LYS:HG3	1.91	0.52
1:G:596:GLU:O	1:G:600:ILE:HG13	2.10	0.52
1:G:225:ILE:HG13	1:G:245:LEU:HD22	1.91	0.52
1:G:406:ALA:HB2	1:G:448:ARG:NH1	2.24	0.52
1:E:172:GLU:O	1:E:175:GLU:HG2	2.09	0.52
1:E:306:THR:HG23	1:E:306:THR:O	2.10	0.52
1:F:527:GLY:O	1:F:528:LYS:HB2	2.10	0.52
1:F:381:ALA:HA	1:F:386:ARG:NH2	2.25	0.51
1:G:242:VAL:HG12	1:G:290:GLU:HG3	1.93	0.51

Continued on next page...

Continued from previous page...

Atom-1	Atom-2	Interatomic distance (Å)	Clash overlap (Å)
1:F:220:VAL:HG13	1:F:255:CYS:HA	1.90	0.51
1:G:285:ASN:HD22	1:G:288:LEU:HD12	1.76	0.51
1:E:177:VAL:HG13	1:E:218:ALA:HB2	1.92	0.51
1:F:307:ASN:C	1:F:309:PRO:HD3	2.30	0.51
1:G:198:LEU:HD11	1:G:306:THR:HG22	1.92	0.51
1:G:163:VAL:HG11	1:G:210:LEU:HD21	1.93	0.51
1:E:187:ASN:ND2	1:E:297:LYS:HB3	2.26	0.51
3:F:998:NHX:CAZ	3:F:998:NHX:CAP	2.87	0.50
1:E:527:GLY:O	1:E:528:LYS:HB2	2.12	0.50
1:F:427:HIS:O	1:F:431:SER:HB2	2.12	0.50
1:G:585:ILE:HG23	1:G:589:LYS:HD3	1.93	0.50
1:G:200:VAL:HG13	1:G:309:PRO:HG3	1.93	0.50
1:F:397:ALA:O	1:F:401:VAL:HG23	2.12	0.50
1:G:233:LEU:HD13	1:G:237:VAL:HG12	1.94	0.50
1:E:230:PHE:HE2	1:E:241:ARG:HB2	1.77	0.49
1:E:445:ILE:O	1:E:445:ILE:CG2	2.61	0.49
1:G:387:ASP:OD2	1:G:388:LYS:HG3	2.12	0.49
1:F:416:GLU:O	1:F:420:ILE:HG13	2.13	0.49
1:G:246:PHE:O	1:G:250:LYS:HG3	2.12	0.49
1:E:400:ARG:HA	1:E:404:GLY:O	2.13	0.49
1:G:380:LEU:HA	1:G:383:ARG:NH1	2.28	0.49
1:F:250:LYS:HA	1:F:300:ILE:HD11	1.94	0.48
1:E:242:VAL:HG12	1:E:290:GLU:HG3	1.95	0.48
1:E:170:ILE:O	1:E:174:LYS:HG3	2.12	0.48
1:E:445:ILE:O	1:E:445:ILE:HG23	2.14	0.48
1:G:360:LYS:HD3	1:G:460:PRO:O	2.13	0.48
1:F:175:GLU:HG3	1:F:176:VAL:N	2.28	0.48
1:F:524:LEU:N	1:F:524:LEU:HD12	2.28	0.48
1:G:594:GLY:O	1:G:597:LEU:HB3	2.13	0.48
1:F:234:PHE:HB3	1:F:237:VAL:CG2	2.43	0.48
1:G:220:VAL:CG1	1:G:255:CYS:HA	2.43	0.48
1:F:195:LYS:HD3	1:F:320:GLY:O	2.12	0.48
1:F:412:ILE:O	1:F:417:LYS:HE3	2.14	0.48
1:G:286:GLN:O	1:G:290:GLU:HG2	2.13	0.48
1:F:434:VAL:HG13	1:F:474:ASP:HB3	1.96	0.48
1:F:542:LEU:CD1	1:F:543:ARG:H	2.13	0.48
1:E:239:ALA:O	1:E:286:GLN:HG2	2.14	0.47
1:E:472:LEU:O	1:E:476:LEU:HB2	2.14	0.47
1:G:162:ASP:O	1:G:209:LEU:HD21	2.15	0.47
1:F:285:ASN:O	1:F:289:VAL:HG23	2.15	0.47
1:G:451:LYS:O	3:G:998:NHX:HAP	2.15	0.47

Continued on next page...

Continued from previous page...

Atom-1	Atom-2	Interatomic distance (Å)	Clash overlap (Å)
1:E:358:ILE:HG23	1:E:398:ILE:HD11	1.97	0.47
1:G:230:PHE:CE2	1:G:241:ARG:HB2	2.50	0.47
1:F:210:LEU:O	1:F:214:VAL:HG23	2.14	0.47
1:F:440:VAL:HG11	1:F:443:ILE:HD11	1.97	0.47
1:F:445:ILE:HD12	1:F:445:ILE:HA	1.67	0.47
1:E:253:ALA:HA	1:E:254:PRO:C	2.36	0.46
1:G:476:LEU:CD2	1:G:504:ALA:HB1	2.45	0.46
1:F:434:VAL:HA	1:F:435:PRO:HD3	1.77	0.46
1:G:230:PHE:HE2	1:G:241:ARG:HB2	1.80	0.46
1:F:166:ALA:O	1:F:170:ILE:HG13	2.15	0.46
1:F:165:GLY:HA3	1:F:331:PRO:HB3	1.97	0.46
1:F:306:THR:HG21	1:F:312:LEU:HD11	1.96	0.46
1:F:231:VAL:O	1:F:232:GLU:CB	2.61	0.46
1:F:243:ARG:HG3	1:F:286:GLN:NE2	2.30	0.46
1:F:173:LEU:O	1:F:177:VAL:HG23	2.15	0.46
1:G:188:ARG:HG3	1:G:189:ILE:N	2.29	0.46
1:G:337:LYS:O	1:G:341:GLU:HG3	2.15	0.46
1:F:233:LEU:HD12	1:F:238:GLY:HA2	1.97	0.46
1:G:225:ILE:HG13	1:G:245:LEU:CD2	2.46	0.46
1:G:344:THR:HG1	1:G:349:LEU:HD11	1.79	0.46
1:G:461:GLU:O	1:G:462:GLU:CB	2.61	0.46
1:E:362:THR:HB	1:E:365:PHE:CG	2.51	0.46
1:F:237:VAL:O	1:F:241:ARG:HG2	2.15	0.46
1:F:244:ASP:O	1:F:248:GLN:HG2	2.15	0.46
1:G:307:ASN:C	1:G:309:PRO:HD3	2.37	0.46
1:E:220:VAL:HG22	1:E:221:PRO:HD2	1.96	0.46
1:F:575:TYR:HA	1:F:578:GLN:OE1	2.15	0.46
1:F:362:THR:O	1:F:365:PHE:HB2	2.16	0.45
1:G:231:VAL:O	1:G:232:GLU:CB	2.64	0.45
1:E:362:THR:HB	1:E:365:PHE:CD2	2.51	0.45
1:E:444:SER:HB3	1:E:455:TYR:CE2	2.51	0.45
1:F:266:GLY:O	1:F:312:LEU:HA	2.15	0.45
1:E:453:LEU:HD21	3:E:998:NHX:HB	1.98	0.45
1:E:495:SER:HB2	3:E:998:NHX:HAK	1.97	0.45
1:F:332:ASP:O	1:F:336:ARG:HG3	2.16	0.45
1:E:445:ILE:HA	1:E:445:ILE:HD12	1.57	0.45
1:G:430:VAL:O	1:G:434:VAL:HB	2.17	0.45
1:G:575:TYR:O	1:G:578:GLN:HG2	2.16	0.45
1:E:410:LEU:HD12	1:E:410:LEU:C	2.37	0.45
1:G:445:ILE:HG23	1:G:445:ILE:O	2.17	0.45
1:F:195:LYS:HB3	1:F:294:PHE:CZ	2.51	0.45

Continued on next page...

Continued from previous page...

Atom-1	Atom-2	Interatomic distance (Å)	Clash overlap (Å)
1:G:234:PHE:CG	1:G:235:VAL:N	2.85	0.45
1:E:227:GLY:N	1:E:260:ASP:O	2.41	0.45
1:E:362:THR:O	1:E:365:PHE:HB2	2.17	0.45
1:E:420:ILE:HD13	1:E:453:LEU:HB3	1.99	0.45
3:E:998:NHX:NAT	3:E:998:NHX:HAS	2.32	0.45
1:G:335:GLY:O	1:G:339:ILE:HG13	2.16	0.45
1:E:175:GLU:HG3	1:E:176:VAL:N	2.31	0.45
1:E:230:PHE:CE2	1:E:241:ARG:HB2	2.52	0.44
1:G:472:LEU:O	1:G:476:LEU:HB2	2.16	0.44
1:G:401:VAL:O	1:G:401:VAL:HG12	2.18	0.44
1:E:231:VAL:O	1:E:232:GLU:CB	2.63	0.44
1:G:266:GLY:O	1:G:312:LEU:HA	2.17	0.44
1:E:462:GLU:CB	1:E:464:LYS:HE3	2.48	0.44
3:G:998:NHX:HAB	3:G:998:NHX:HBF	1.80	0.44
1:G:445:ILE:HA	1:G:445:ILE:HD12	1.49	0.44
1:G:422:TYR:CD2	1:G:583:VAL:HG21	2.53	0.44
1:F:399:ASP:CB	1:F:448:ARG:HH21	2.30	0.43
1:E:243:ARG:HG3	1:E:286:GLN:NE2	2.33	0.43
1:F:381:ALA:HB2	1:F:393:ASP:OD2	2.18	0.43
1:G:332:ASP:O	1:G:336:ARG:HG3	2.18	0.43
1:G:422:TYR:CE2	1:G:583:VAL:HG21	2.52	0.43
1:G:527:GLY:O	1:G:528:LYS:HB2	2.18	0.43
1:E:189:ILE:O	1:E:189:ILE:HG13	2.19	0.43
1:G:381:ALA:HA	1:G:386:ARG:NH2	2.32	0.43
1:E:521:LEU:HD23	1:E:521:LEU:HA	1.79	0.43
1:F:239:ALA:O	1:F:286:GLN:HG2	2.17	0.43
1:E:163:VAL:HG22	1:E:209:LEU:HG	1.99	0.43
1:F:220:VAL:HG22	1:F:221:PRO:HD2	2.00	0.43
1:F:242:VAL:HG12	1:F:290:GLU:HG3	2.00	0.43
1:G:285:ASN:O	1:G:289:VAL:HG23	2.19	0.43
1:E:366:VAL:HG22	1:E:369:ASP:OD2	2.19	0.43
1:E:226:SER:HB3	1:E:229:ASP:OD1	2.19	0.43
1:E:422:TYR:CD2	1:E:583:VAL:HG11	2.53	0.43
1:F:286:GLN:O	1:F:290:GLU:HG2	2.19	0.43
1:G:448:ARG:O	1:G:452:ALA:HB3	2.17	0.43
1:G:319:PRO:HA	1:G:323:ASP:HB3	2.00	0.43
1:F:188:ARG:HG3	1:F:189:ILE:N	2.32	0.43
1:G:239:ALA:O	1:G:286:GLN:HG2	2.19	0.43
1:F:177:VAL:HG13	1:F:218:ALA:HB2	2.00	0.42
3:F:998:NHX:HAP	3:F:998:NHX:OAH	2.19	0.42
1:G:194:PRO:HG3	1:G:324:LYS:HD3	1.99	0.42

Continued on next page...

Continued from previous page...

Atom-1	Atom-2	Interatomic distance (Å)	Clash overlap (Å)
1:G:347:LYS:HA	1:G:348:PRO:HD3	1.86	0.42
1:G:362:THR:N	1:G:363:PRO:CD	2.82	0.42
1:E:380:LEU:HA	1:E:380:LEU:HD12	1.61	0.42
1:F:179:PHE:CG	1:F:193:MET:HG3	2.54	0.42
1:F:234:PHE:HB3	1:F:237:VAL:HG23	2.01	0.42
1:F:347:LYS:HA	1:F:348:PRO:HD3	1.75	0.42
1:G:215:ALA:HB2	1:G:256:ILE:HD12	2.00	0.42
1:E:434:VAL:HG13	1:E:474:ASP:HB3	2.01	0.42
1:G:578:GLN:CD	1:G:578:GLN:H	2.22	0.42
1:E:407:ARG:C	1:E:409:SER:H	2.23	0.42
1:G:392:LYS:O	1:G:396:GLU:HB2	2.19	0.42
1:E:213:ALA:O	1:E:217:GLU:HB2	2.19	0.42
1:F:262:ILE:HG23	1:F:312:LEU:HD21	2.01	0.42
1:E:347:LYS:HA	1:E:348:PRO:HD3	1.77	0.42
1:F:362:THR:HB	1:F:365:PHE:CG	2.54	0.42
1:F:160:PHE:HB3	1:F:170:ILE:HD13	2.02	0.42
1:F:406:ALA:HB2	1:F:448:ARG:NH1	2.34	0.42
1:F:448:ARG:O	1:F:452:ALA:HB3	2.19	0.42
1:G:489:VAL:HG22	1:G:576:ARG:CZ	2.50	0.42
1:F:460:PRO:O	1:F:461:GLU:CG	2.65	0.42
1:G:242:VAL:O	1:G:246:PHE:HD1	2.02	0.42
1:E:263:ASP:HB2	1:E:311:ILE:CG2	2.50	0.42
1:G:224:HIS:O	1:G:225:ILE:HD13	2.20	0.42
1:F:220:VAL:HG22	1:F:254:PRO:O	2.20	0.41
1:E:237:VAL:O	1:E:241:ARG:HG2	2.19	0.41
1:F:212:ARG:HG2	1:F:222:PHE:CE2	2.55	0.41
1:F:306:THR:HG23	1:F:306:THR:O	2.19	0.41
1:G:524:LEU:HD12	1:G:524:LEU:N	2.35	0.41
1:G:246:PHE:CG	1:G:290:GLU:HB3	2.55	0.41
1:E:335:GLY:O	1:E:339:ILE:HG13	2.20	0.41
1:F:472:LEU:HD23	1:F:472:LEU:HA	1.86	0.41
1:E:416:GLU:O	1:E:420:ILE:HG13	2.20	0.41
1:F:194:PRO:HG2	1:F:324:LYS:HD3	2.02	0.41
1:F:586:LEU:HD13	1:F:592:ILE:HG22	2.03	0.41
1:G:177:VAL:HG11	1:G:217:GLU:HG3	2.03	0.41
1:G:420:ILE:HG23	3:G:998:NHX:HAA	2.02	0.41
1:G:586:LEU:O	1:G:590:GLU:HA	2.21	0.41
1:E:406:ALA:HA	1:E:448:ARG:HD2	2.01	0.41
1:F:319:PRO:HA	1:F:323:ASP:HB3	2.03	0.41
1:G:205:THR:HG22	1:G:366:VAL:HB	2.02	0.41
1:G:315:ALA:HA	1:G:318:ARG:NE	2.36	0.41

Continued on next page...

Continued from previous page...

Atom-1	Atom-2	Interatomic distance (Å)	Clash overlap (Å)
1:E:167:GLU:H	1:E:167:GLU:CD	2.24	0.41
1:G:420:ILE:HG12	3:G:998:NHX:HAAB	2.02	0.41
1:G:338:LYS:O	1:G:342:ILE:HG13	2.21	0.41
1:G:476:LEU:HD21	1:G:504:ALA:HB1	2.01	0.41
1:E:444:SER:HB3	1:E:455:TYR:CZ	2.55	0.41
1:E:582:ILE:O	1:E:586:LEU:HB2	2.21	0.41
1:F:198:LEU:HD11	1:F:306:THR:HG22	2.01	0.41
1:F:575:TYR:O	1:F:578:GLN:HG2	2.20	0.41
1:G:420:ILE:HD13	1:G:453:LEU:HB3	2.03	0.41
1:F:444:SER:HB3	1:F:455:TYR:CZ	2.56	0.41
1:G:210:LEU:O	1:G:214:VAL:HG23	2.21	0.41
1:E:194:PRO:HG3	1:E:324:LYS:CD	2.51	0.40
1:E:542:LEU:HD13	1:E:543:ARG:N	2.30	0.40
1:E:198:LEU:O	1:E:325:LYS:HA	2.22	0.40
1:F:460:PRO:HB3	1:F:462:GLU:CG	2.50	0.40
1:G:333:MET:HG3	1:G:334:LEU:N	2.37	0.40
1:E:179:PHE:CD1	1:E:193:MET:HG3	2.56	0.40
1:E:179:PHE:CD2	1:E:193:MET:HG3	2.56	0.40
1:G:438:GLU:HA	1:G:439:PRO:HD3	1.96	0.40

There are no symmetry-related clashes.

5.3 Torsion angles [i](#)

5.3.1 Protein backbone [i](#)

In the following table, the Percentiles column shows the percent Ramachandran outliers of the chain as a percentile score with respect to all X-ray entries followed by that with respect to entries of similar resolution.

The Analysed column shows the number of residues for which the backbone conformation was analysed, and the total number of residues.

Mol	Chain	Analysed	Favoured	Allowed	Outliers	Percentiles
1	E	421/465 (90%)	393 (93%)	27 (6%)	1 (0%)	47 71
1	F	420/465 (90%)	390 (93%)	25 (6%)	5 (1%)	13 27
1	G	420/465 (90%)	390 (93%)	27 (6%)	3 (1%)	22 43
All	All	1261/1395 (90%)	1173 (93%)	79 (6%)	9 (1%)	22 43

All (9) Ramachandran outliers are listed below:

Mol	Chain	Res	Type
1	E	463	ASP
1	G	462	GLU
1	F	235	VAL
1	F	450	TYR
1	G	450	TYR
1	F	451	LYS
1	F	232	GLU
1	F	460	PRO
1	G	278	ASP

5.3.2 Protein sidechains [i](#)

In the following table, the Percentiles column shows the percent sidechain outliers of the chain as a percentile score with respect to all X-ray entries followed by that with respect to entries of similar resolution.

The Analysed column shows the number of residues for which the sidechain conformation was analysed, and the total number of residues.

Mol	Chain	Analysed	Rotameric	Outliers	Percentiles	
1	E	348/381 (91%)	333 (96%)	15 (4%)	29	54
1	F	348/381 (91%)	332 (95%)	16 (5%)	27	51
1	G	348/381 (91%)	334 (96%)	14 (4%)	31	57
All	All	1044/1143 (91%)	999 (96%)	45 (4%)	29	54

All (45) residues with a non-rotameric sidechain are listed below:

Mol	Chain	Res	Type
1	E	220	VAL
1	E	287	LEU
1	E	333	MET
1	E	344	THR
1	E	380	LEU
1	E	445	ILE
1	E	448	ARG
1	E	462	GLU
1	E	476	LEU
1	E	479	LEU
1	E	483	ARG
1	E	519	GLU
1	E	542	LEU
1	E	578	GLN

Continued on next page...

Continued from previous page...

Mol	Chain	Res	Type
1	E	591	THR
1	F	220	VAL
1	F	307	ASN
1	F	311	ILE
1	F	333	MET
1	F	344	THR
1	F	418	ARG
1	F	445	ILE
1	F	448	ARG
1	F	462	GLU
1	F	473	LEU
1	F	493	VAL
1	F	518	SER
1	F	519	GLU
1	F	542	LEU
1	F	578	GLN
1	F	591	THR
1	G	220	VAL
1	G	311	ILE
1	G	333	MET
1	G	344	THR
1	G	418	ARG
1	G	434	VAL
1	G	445	ILE
1	G	448	ARG
1	G	473	LEU
1	G	493	VAL
1	G	518	SER
1	G	542	LEU
1	G	578	GLN
1	G	599	ARG

Sometimes sidechains can be flipped to improve hydrogen bonding and reduce clashes. All (4) such sidechains are listed below:

Mol	Chain	Res	Type
1	E	286	GLN
1	F	286	GLN
1	G	375	ASN
1	G	458	HIS

5.3.3 RNA [i](#)

There are no RNA molecules in this entry.

5.4 Non-standard residues in protein, DNA, RNA chains [i](#)

There are no non-standard protein/DNA/RNA residues in this entry.

5.5 Carbohydrates [i](#)

There are no monosaccharides in this entry.

5.6 Ligand geometry [i](#)

Of 6 ligands modelled in this entry, 3 are monoatomic - leaving 3 for Mogul analysis.

In the following table, the Counts columns list the number of bonds (or angles) for which Mogul statistics could be retrieved, the number of bonds (or angles) that are observed in the model and the number of bonds (or angles) that are defined in the Chemical Component Dictionary. The Link column lists molecule types, if any, to which the group is linked. The Z score for a bond length (or angle) is the number of standard deviations the observed value is removed from the expected value. A bond length (or angle) with $|Z| > 2$ is considered an outlier worth inspection. RMSZ is the root-mean-square of all Z scores of the bond lengths (or angles).

Mol	Type	Chain	Res	Link	Bond lengths			Bond angles		
					Counts	RMSZ	# Z > 2	Counts	RMSZ	# Z > 2
3	NHX	G	998	2	34,34,34	1.22	1 (2%)	45,46,46	1.38	5 (11%)
3	NHX	E	998	2	34,34,34	0.86	0	45,46,46	1.56	5 (11%)
3	NHX	F	998	2	34,34,34	0.90	0	45,46,46	1.55	6 (13%)

In the following table, the Chirals column lists the number of chiral outliers, the number of chiral centers analysed, the number of these observed in the model and the number defined in the Chemical Component Dictionary. Similar counts are reported in the Torsion and Rings columns. '-' means no outliers of that kind were identified.

Mol	Type	Chain	Res	Link	Chirals	Torsions	Rings
3	NHX	G	998	2	-	1/34/34/34	0/2/2/2
3	NHX	E	998	2	-	6/34/34/34	0/2/2/2
3	NHX	F	998	2	-	10/34/34/34	0/2/2/2

All (1) bond length outliers are listed below:

Mol	Chain	Res	Type	Atoms	Z	Observed(Å)	Ideal(Å)
3	G	998	NHX	CAX-NAT	-4.33	1.27	1.32

All (16) bond angle outliers are listed below:

Mol	Chain	Res	Type	Atoms	Z	Observed(°)	Ideal(°)
3	E	998	NHX	OAI-NAT-CAX	-5.05	112.33	119.79
3	F	998	NHX	CBF-CAQ-CAX	-4.89	102.83	112.10
3	F	998	NHX	CAS-CBF-CAY	4.25	116.97	109.44
3	E	998	NHX	CAS-CBF-CAY	4.21	116.89	109.44
3	G	998	NHX	CAS-CBF-CAY	4.20	116.88	109.44
3	F	998	NHX	OAI-NAT-CAX	-4.14	113.68	119.79
3	E	998	NHX	CBF-CAQ-CAX	-4.13	104.26	112.10
3	F	998	NHX	CBG-NAV-CAY	-3.98	113.14	121.67
3	G	998	NHX	OAI-NAT-CAX	-3.96	113.94	119.79
3	E	998	NHX	CBG-NAV-CAY	-3.49	114.19	121.67
3	G	998	NHX	CBF-CAQ-CAX	-3.23	105.97	112.10
3	G	998	NHX	CBF-CAS-CBD	-3.02	108.72	115.68
3	G	998	NHX	CAQ-CBF-CAY	-2.27	106.49	109.77
3	F	998	NHX	CAQ-CBF-CAY	-2.21	106.57	109.77
3	F	998	NHX	OAG-CAY-CBF	-2.14	119.33	122.12
3	E	998	NHX	CAQ-CBF-CAY	-2.04	106.82	109.77

There are no chirality outliers.

All (17) torsion outliers are listed below:

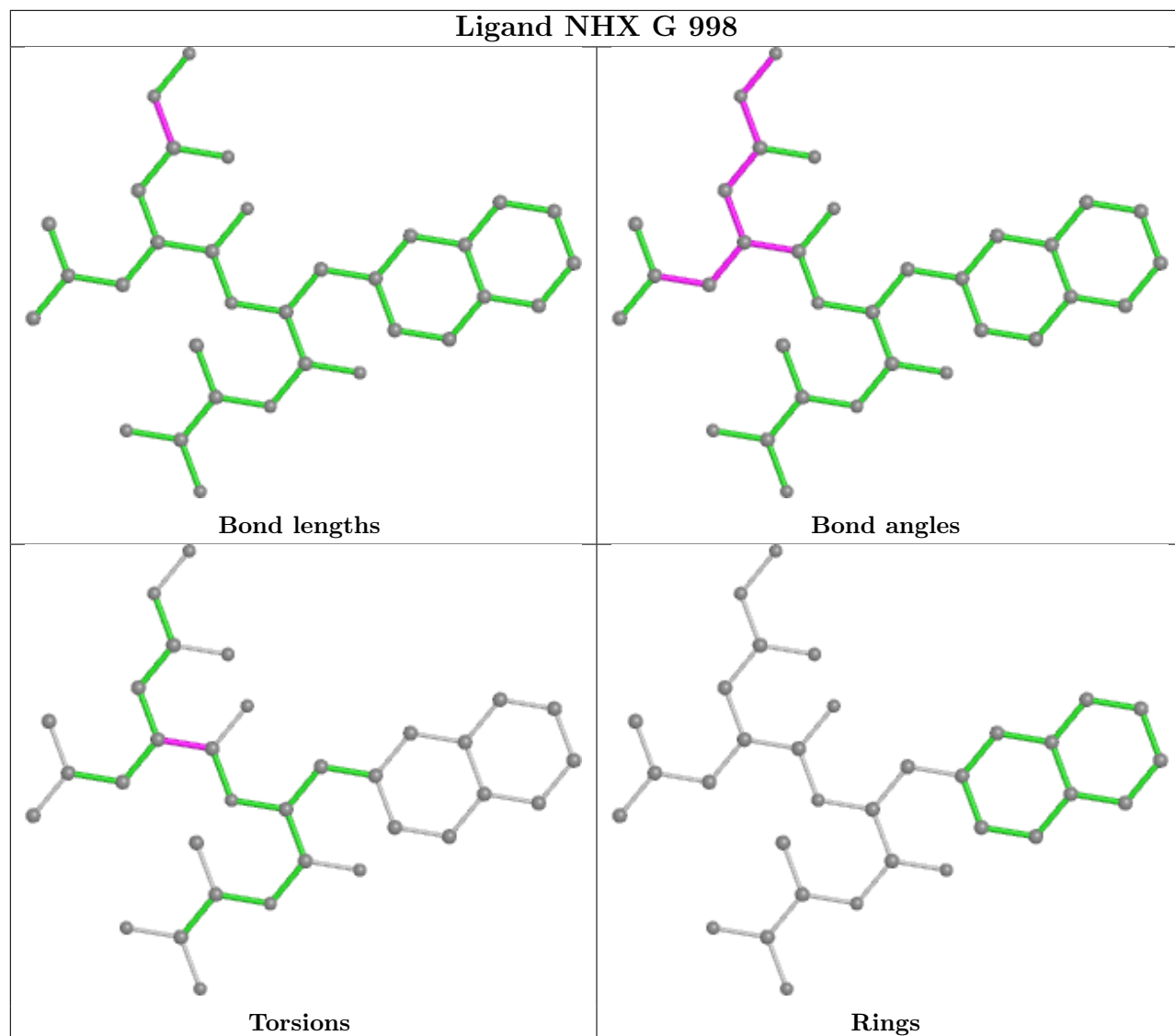
Mol	Chain	Res	Type	Atoms
3	F	998	NHX	OAH-CAZ-CBG-CAR
3	F	998	NHX	N-CAZ-CBG-CAR
3	F	998	NHX	CBG-CAR-CBA-CAP
3	F	998	NHX	CBG-CAR-CBA-CAL
3	E	998	NHX	CBG-CAR-CBA-CAL
3	E	998	NHX	CBG-CAR-CBA-CAP
3	F	998	NHX	OAH-CAZ-CBG-NAV
3	F	998	NHX	N-CAZ-CBG-NAV
3	E	998	NHX	NAD-C-CA-N
3	E	998	NHX	CBF-CAQ-CAX-OAF
3	E	998	NHX	O-C-CA-N
3	F	998	NHX	O-C-CA-CB
3	F	998	NHX	NAD-C-CA-N
3	F	998	NHX	NAD-C-CA-CB
3	F	998	NHX	C-CA-N-CAZ
3	E	998	NHX	NAV-CAY-CBF-CAQ
3	G	998	NHX	NAV-CAY-CBF-CAQ

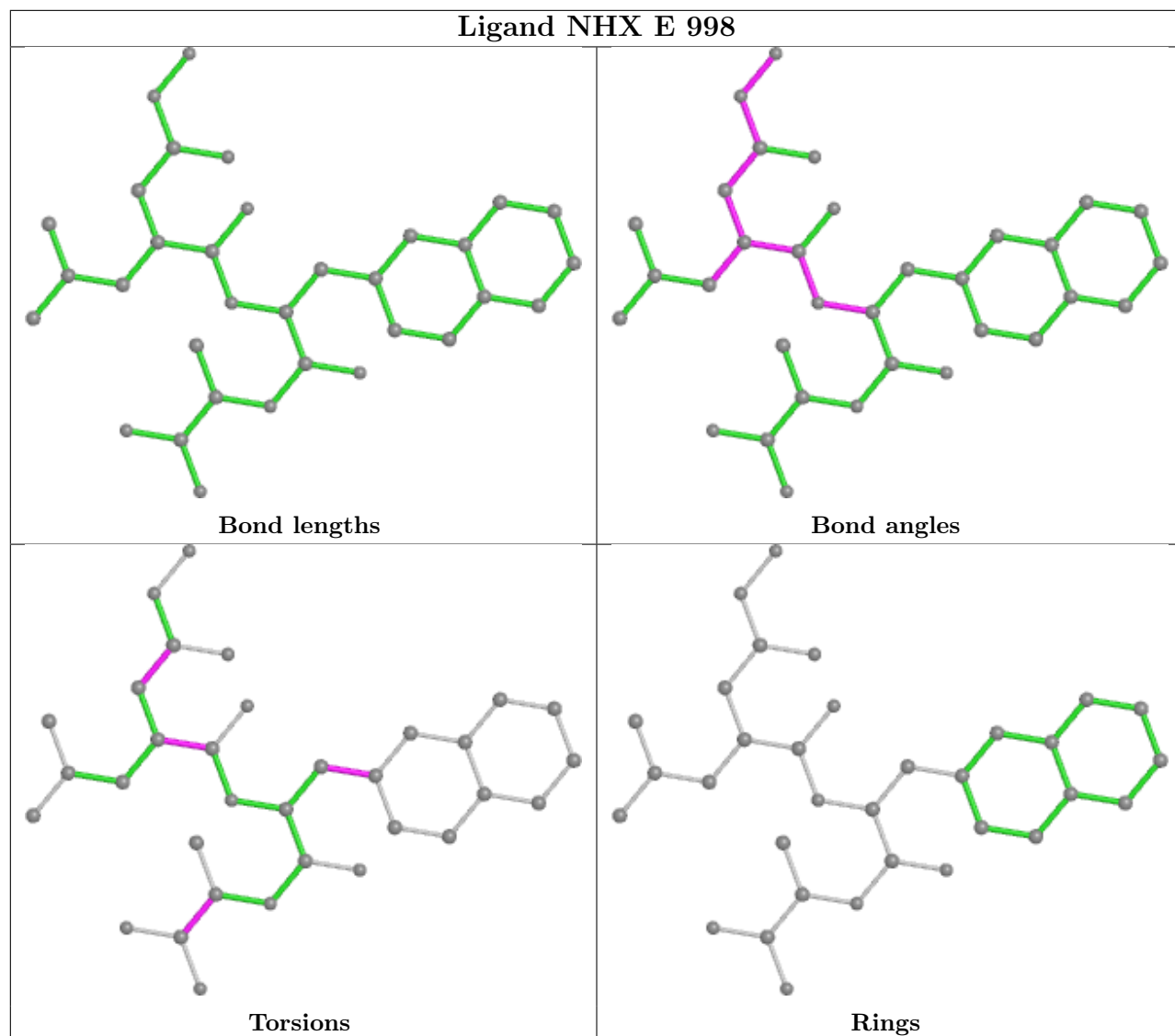
There are no ring outliers.

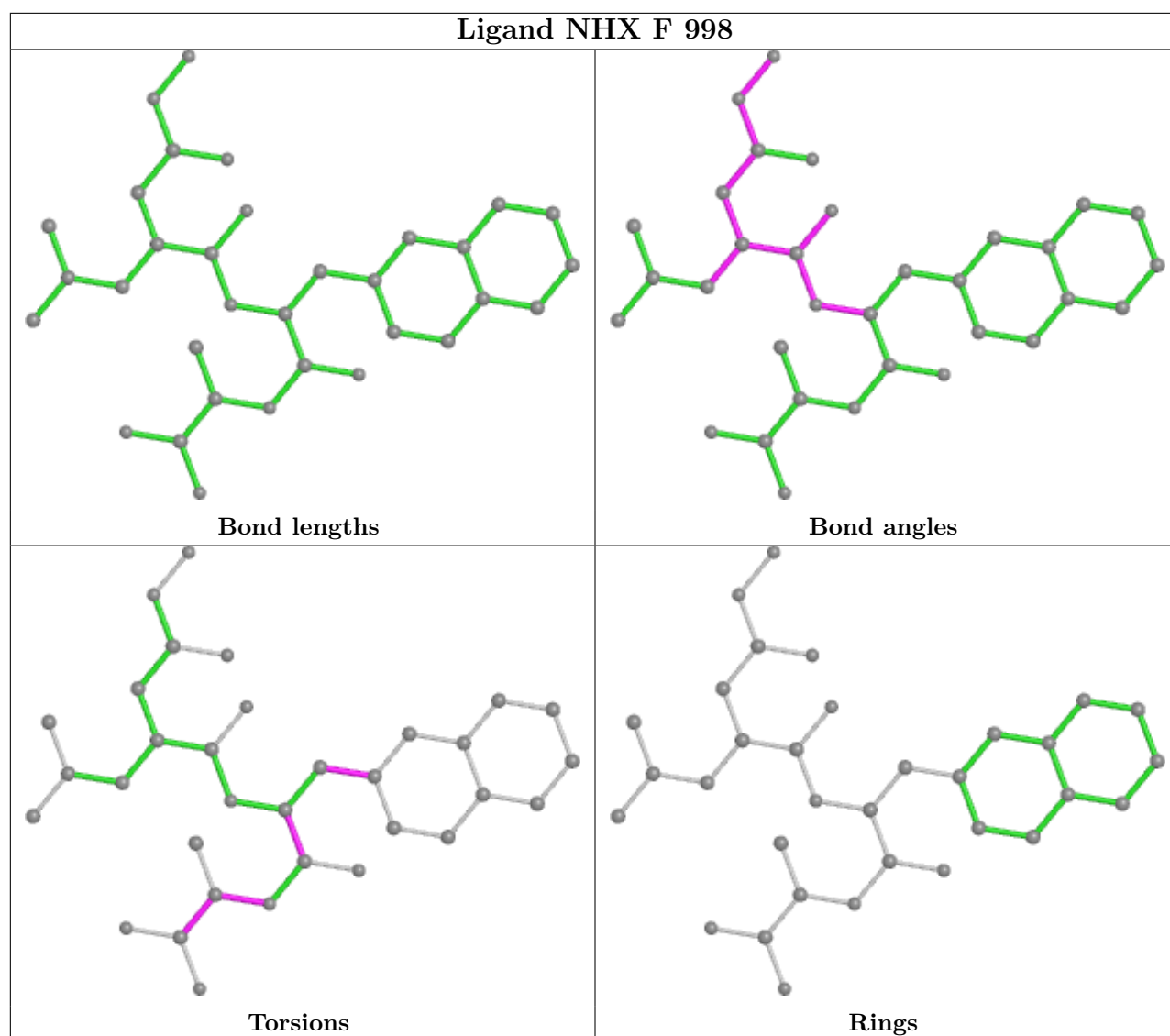
3 monomers are involved in 16 short contacts:

Mol	Chain	Res	Type	Clashes	Symm-Clashes
3	G	998	NHX	4	0
3	E	998	NHX	7	0
3	F	998	NHX	5	0

The following is a two-dimensional graphical depiction of Mogul quality analysis of bond lengths, bond angles, torsion angles, and ring geometry for all instances of the Ligand of Interest. In addition, ligands with molecular weight > 250 and outliers as shown on the validation Tables will also be included. For torsion angles, if less than 5% of the Mogul distribution of torsion angles is within 10 degrees of the torsion angle in question, then that torsion angle is considered an outlier. Any bond that is central to one or more torsion angles identified as an outlier by Mogul will be highlighted in the graph. For rings, the root-mean-square deviation (RMSD) between the ring in question and similar rings identified by Mogul is calculated over all ring torsion angles. If the average RMSD is greater than 60 degrees and the minimal RMSD between the ring in question and any Mogul-identified rings is also greater than 60 degrees, then that ring is considered an outlier. The outliers are highlighted in purple. The color gray indicates Mogul did not find sufficient equivalents in the CSD to analyse the geometry.







5.7 Other polymers [i](#)

There are no such residues in this entry.

5.8 Polymer linkage issues [i](#)

There are no chain breaks in this entry.

6 Fit of model and data

6.1 Protein, DNA and RNA chains

In the following table, the column labelled ‘#RSRZ > 2’ contains the number (and percentage) of RSRZ outliers, followed by percent RSRZ outliers for the chain as percentile scores relative to all X-ray entries and entries of similar resolution. The OWAB column contains the minimum, median, 95th percentile and maximum values of the occupancy-weighted average B-factor per residue. The column labelled ‘Q < 0.9’ lists the number of (and percentage) of residues with an average occupancy less than 0.9.

Mol	Chain	Analysed	<RSRZ>	#RSRZ>2	OWAB(Å ²)	Q<0.9
1	E	427/465 (91%)	0.61	46 (10%) 5 3	35, 78, 200, 347	0
1	F	426/465 (91%)	0.86	67 (15%) 2 1	46, 105, 229, 324	0
1	G	426/465 (91%)	1.67	120 (28%) 0 0	46, 124, 289, 360	0
All	All	1279/1395 (91%)	1.05	233 (18%) 1 0	35, 99, 258, 360	0

All (233) RSRZ outliers are listed below:

Mol	Chain	Res	Type	RSRZ
1	E	233	LEU	26.4
1	G	230	PHE	22.4
1	E	230	PHE	21.6
1	G	231	VAL	19.7
1	G	234	PHE	18.7
1	E	204	GLY	17.7
1	G	232	GLU	17.1
1	F	236	GLY	16.5
1	G	307	ASN	14.8
1	G	308	ARG	14.7
1	G	236	GLY	14.4
1	G	235	VAL	13.7
1	F	231	VAL	13.3
1	G	233	LEU	13.3
1	F	230	PHE	13.1
1	G	317	LEU	12.3
1	G	237	VAL	11.8
1	G	229	ASP	10.9
1	G	316	LEU	10.9
1	G	315	ALA	10.8
1	F	312	LEU	10.7
1	G	310	ASP	10.5
1	G	311	ILE	10.3

Continued on next page...

Continued from previous page...

Mol	Chain	Res	Type	RSRZ
1	E	232	GLU	10.3
1	F	186	PHE	10.2
1	F	235	VAL	10.0
1	G	284	LEU	9.4
1	F	308	ARG	9.3
1	E	234	PHE	9.2
1	G	278	ASP	8.7
1	F	233	LEU	8.6
1	E	236	GLY	8.6
1	F	203	PRO	8.6
1	F	232	GLU	8.4
1	G	203	PRO	8.4
1	E	231	VAL	8.2
1	G	318	ARG	8.1
1	F	204	GLY	7.9
1	G	389	ILE	7.9
1	G	262	ILE	7.7
1	G	314	PRO	7.7
1	E	308	ARG	7.4
1	G	294	PHE	7.3
1	E	227	GLY	7.3
1	F	307	ASN	7.3
1	G	241	ARG	7.2
1	E	224	HIS	7.1
1	G	180	LEU	7.0
1	F	229	ASP	6.9
1	G	282	GLN	6.9
1	F	189	ILE	6.8
1	G	300	ILE	6.7
1	E	229	ASP	6.7
1	G	260	ASP	6.6
1	G	251	ALA	6.6
1	F	311	ILE	6.6
1	F	184	SER	6.5
1	G	259	ILE	6.5
1	F	188	ARG	6.5
1	G	226	SER	6.3
1	E	317	LEU	6.3
1	F	389	ILE	6.3
1	F	265	VAL	6.3
1	G	240	ALA	6.3
1	F	317	LEU	6.2

Continued on next page...

Continued from previous page...

Mol	Chain	Res	Type	RSRZ
1	G	321	ARG	6.0
1	F	277	HIS	6.0
1	G	245	LEU	5.9
1	G	200	VAL	5.9
1	G	257	VAL	5.9
1	E	281	GLU	5.8
1	E	203	PRO	5.7
1	G	253	ALA	5.6
1	G	263	ASP	5.6
1	G	267	ARG	5.6
1	F	227	GLY	5.5
1	G	277	HIS	5.5
1	G	224	HIS	5.5
1	G	599	ARG	5.4
1	G	291	MET	5.4
1	G	309	PRO	5.4
1	G	254	PRO	5.4
1	F	262	ILE	5.4
1	G	255	CYS	5.4
1	G	243	ARG	5.3
1	G	223	PHE	5.2
1	G	201	GLY	5.2
1	G	186	PHE	5.0
1	G	280	ARG	5.0
1	G	261	GLU	5.0
1	G	281	GLU	5.0
1	F	191	ALA	5.0
1	E	223	PHE	5.0
1	E	235	VAL	4.9
1	F	285	ASN	4.9
1	G	304	ALA	4.9
1	F	179	PHE	4.9
1	E	228	SER	4.8
1	E	311	ILE	4.8
1	G	187	ASN	4.8
1	F	192	ARG	4.8
1	E	307	ASN	4.8
1	F	383	ARG	4.7
1	G	313	ASP	4.7
1	G	287	LEU	4.7
1	G	385	GLY	4.7
1	F	253	ALA	4.6

Continued on next page...

Continued from previous page...

Mol	Chain	Res	Type	RSRZ
1	G	305	ALA	4.6
1	F	254	PRO	4.5
1	E	312	LEU	4.5
1	F	325	LYS	4.5
1	G	206	GLY	4.3
1	G	256	ILE	4.1
1	G	158	VAL	4.1
1	G	188	ARG	4.1
1	G	181	LYS	4.0
1	E	237	VAL	4.0
1	G	325	LYS	4.0
1	G	383	ARG	3.9
1	G	157	ARG	3.9
1	F	198	LEU	3.8
1	E	156	LYS	3.8
1	G	221	PRO	3.8
1	G	382	ALA	3.8
1	G	252	HIS	3.7
1	F	157	ARG	3.7
1	G	258	PHE	3.7
1	F	193	MET	3.6
1	E	252	HIS	3.6
1	G	184	SER	3.6
1	G	222	PHE	3.6
1	F	243	ARG	3.6
1	G	179	PHE	3.5
1	F	281	GLU	3.5
1	G	320	GLY	3.5
1	E	245	LEU	3.5
1	F	278	ASP	3.5
1	G	386	ARG	3.4
1	G	296	SER	3.4
1	G	195	LYS	3.3
1	G	388	LYS	3.3
1	G	299	GLY	3.3
1	F	267	ARG	3.3
1	G	306	THR	3.3
1	G	198	LEU	3.2
1	F	388	LYS	3.2
1	F	182	ASP	3.2
1	G	183	PRO	3.2
1	G	246	PHE	3.2

Continued on next page...

Continued from previous page...

Mol	Chain	Res	Type	RSRZ
1	G	283	THR	3.2
1	E	249	ALA	3.1
1	E	241	ARG	3.1
1	F	234	PHE	3.1
1	G	326	ILE	3.1
1	F	178	GLU	3.1
1	E	222	PHE	3.1
1	G	214	VAL	3.1
1	F	597	LEU	3.1
1	F	187	ASN	3.0
1	F	299	GLY	3.0
1	G	228	SER	3.0
1	E	316	LEU	3.0
1	F	249	ALA	3.0
1	E	262	ILE	2.9
1	E	277	HIS	2.9
1	F	190	GLY	2.9
1	G	322	PHE	2.9
1	E	243	ARG	2.9
1	E	240	ALA	2.9
1	F	316	LEU	2.9
1	G	197	ILE	2.8
1	E	221	PRO	2.8
1	E	215	ALA	2.8
1	F	542	LEU	2.8
1	E	226	SER	2.7
1	E	246	PHE	2.7
1	G	319	PRO	2.7
1	F	266	GLY	2.7
1	G	597	LEU	2.7
1	F	300	ILE	2.7
1	G	292	ASP	2.6
1	F	181	LYS	2.6
1	E	282	GLN	2.6
1	G	312	LEU	2.6
1	G	394	PHE	2.6
1	G	165	GLY	2.5
1	E	219	ASN	2.5
1	F	305	ALA	2.5
1	F	185	LYS	2.5
1	G	249	ALA	2.5
1	G	328	VAL	2.5

Continued on next page...

Continued from previous page...

Mol	Chain	Res	Type	RSRZ
1	F	258	PHE	2.5
1	F	219	ASN	2.5
1	G	176	VAL	2.5
1	G	302	VAL	2.4
1	G	603	GLU	2.4
1	F	306	THR	2.4
1	F	228	SER	2.4
1	F	263	ASP	2.4
1	E	318	ARG	2.4
1	G	285	ASN	2.3
1	F	322	PHE	2.3
1	F	282	GLN	2.3
1	G	218	ALA	2.3
1	G	379	LEU	2.3
1	G	202	PRO	2.3
1	F	310	ASP	2.3
1	G	327	VAL	2.2
1	G	194	PRO	2.2
1	G	348	PRO	2.2
1	E	186	PHE	2.2
1	E	267	ARG	2.2
1	G	209	LEU	2.2
1	G	196	GLY	2.2
1	E	157	ARG	2.1
1	E	248	GLN	2.1
1	G	301	ILE	2.1
1	G	601	LEU	2.1
1	E	181	LYS	2.1
1	G	225	ILE	2.1
1	F	315	ALA	2.1
1	G	244	ASP	2.1
1	G	205	THR	2.1
1	F	223	PHE	2.1
1	F	241	ARG	2.0
1	G	381	ALA	2.0
1	G	602	SER	2.0
1	E	314	PRO	2.0
1	F	180	LEU	2.0
1	G	330	PRO	2.0
1	F	246	PHE	2.0
1	E	280	ARG	2.0
1	G	212	ARG	2.0

6.2 Non-standard residues in protein, DNA, RNA chains [i](#)

There are no non-standard protein/DNA/RNA residues in this entry.

6.3 Carbohydrates [i](#)

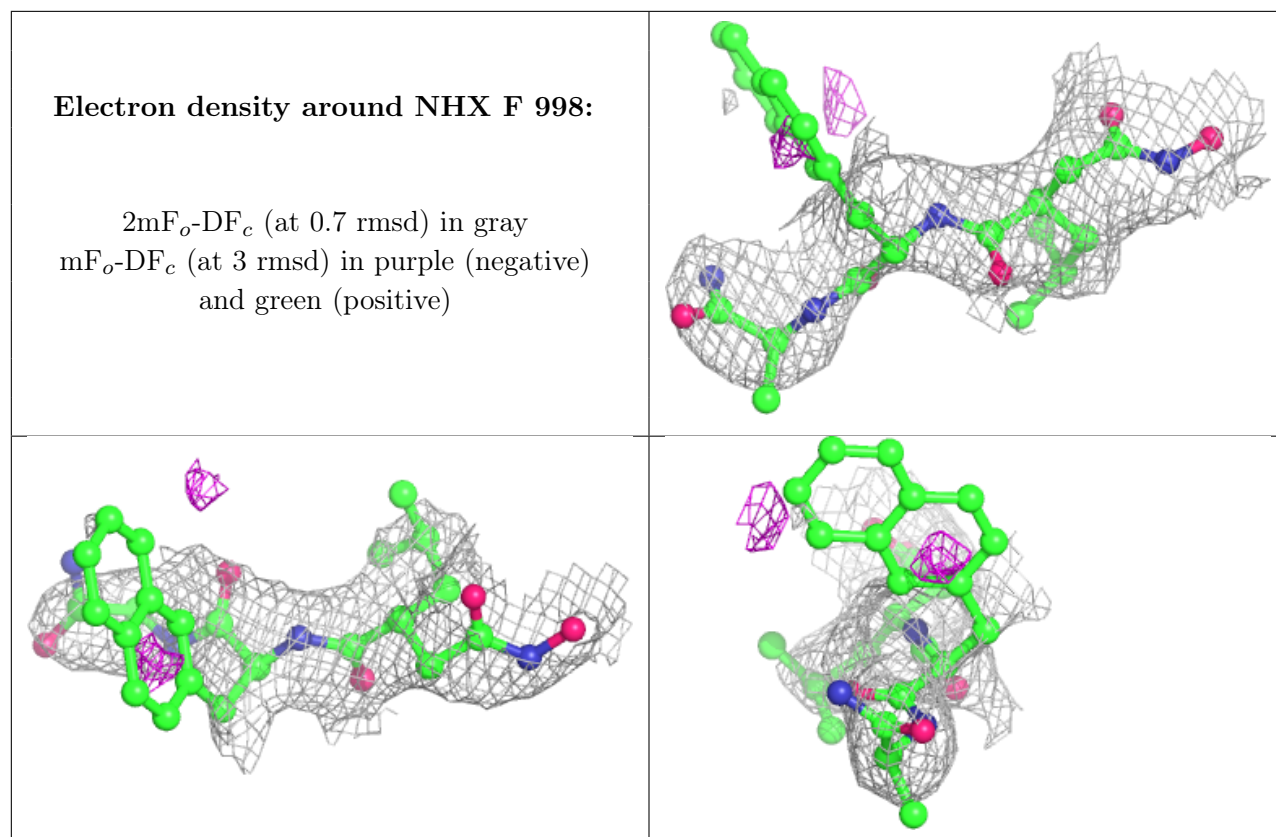
There are no monosaccharides in this entry.

6.4 Ligands [i](#)

In the following table, the Atoms column lists the number of modelled atoms in the group and the number defined in the chemical component dictionary. The B-factors column lists the minimum, median, 95th percentile and maximum values of B factors of atoms in the group. The column labelled 'Q< 0.9' lists the number of atoms with occupancy less than 0.9.

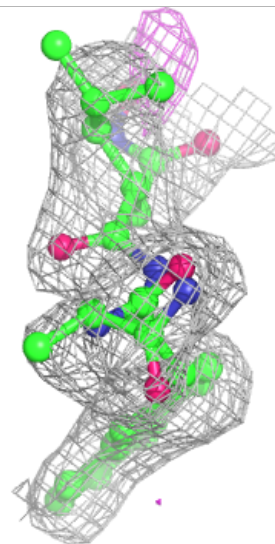
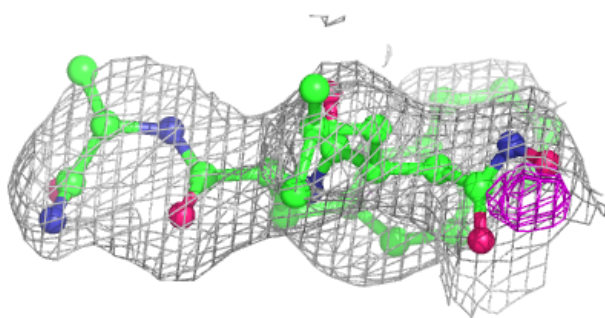
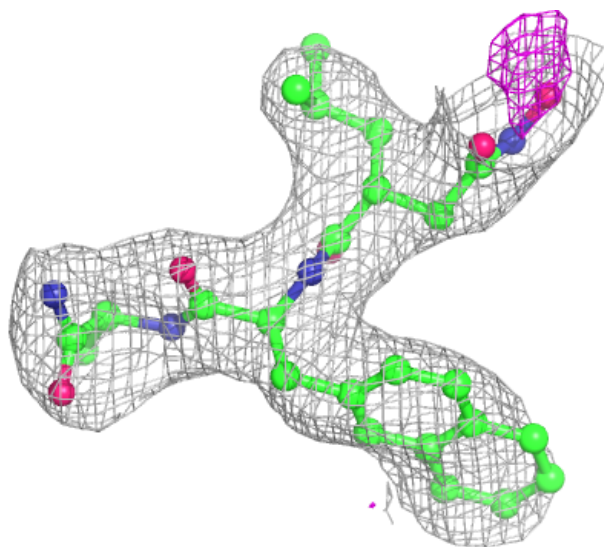
Mol	Type	Chain	Res	Atoms	RSCC	RSR	B-factors(Å ²)	Q<0.9
3	NHX	F	998	33/33	0.92	0.35	65,138,183,184	0
3	NHX	G	998	33/33	0.92	0.21	53,87,112,115	0
3	NHX	E	998	33/33	0.94	0.26	43,90,166,169	0
2	ZN	E	996	1/1	0.98	0.14	55,55,55,55	0
2	ZN	G	996	1/1	0.99	0.08	65,65,65,65	0
2	ZN	F	996	1/1	0.99	0.10	70,70,70,70	0

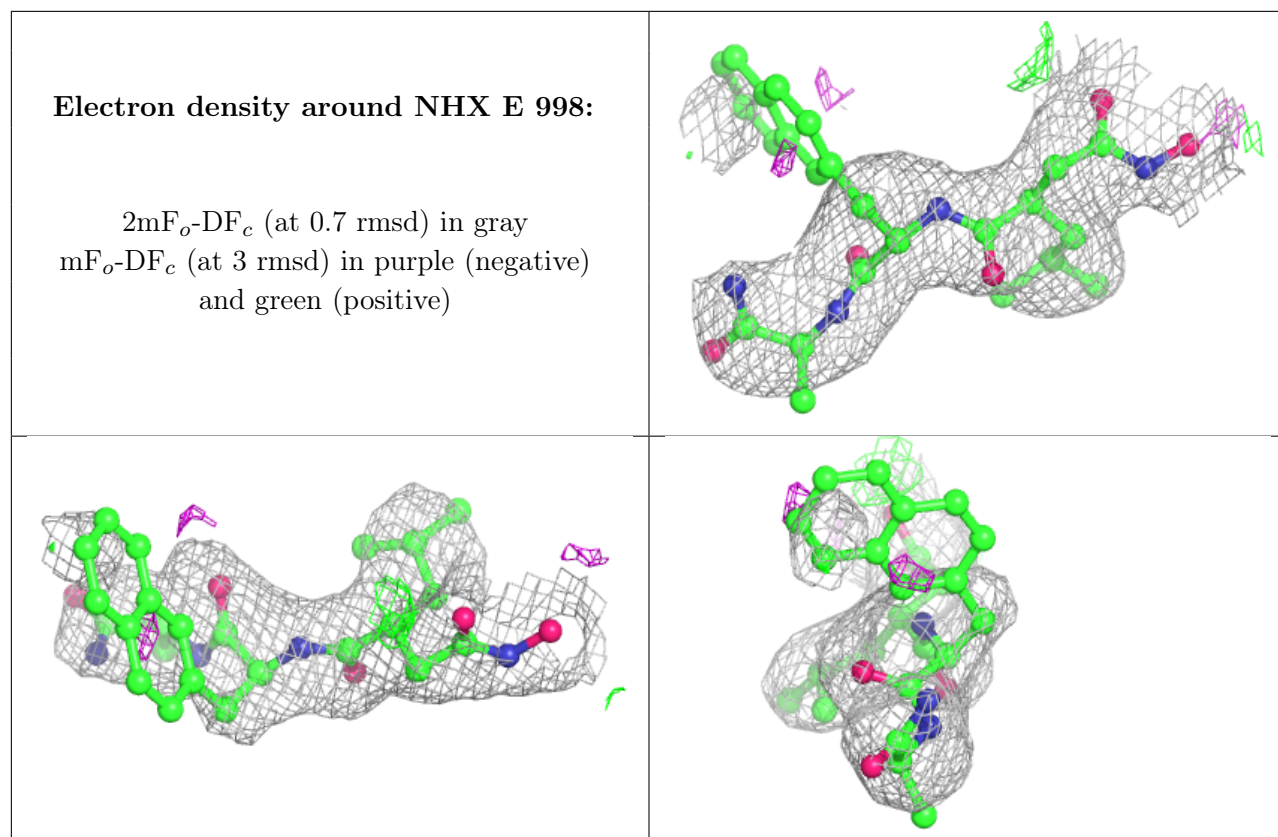
The following is a graphical depiction of the model fit to experimental electron density of all instances of the Ligand of Interest. In addition, ligands with molecular weight > 250 and outliers as shown on the geometry validation Tables will also be included. Each fit is shown from different orientation to approximate a three-dimensional view.



Electron density around NHX G 998:

$2mF_o-DF_c$ (at 0.7 rmsd) in gray
 mF_o-DF_c (at 3 rmsd) in purple (negative)
and green (positive)





6.5 Other polymers [i](#)

There are no such residues in this entry.