



Full wwPDB X-ray Structure Validation Report ⓘ

Aug 28, 2023 – 04:41 AM EDT

PDB ID : 3K4L
Title : Pyranose 2-oxidase F454N mutant in complex with 2FG
Authors : Divne, C.; Tan, T.C.
Deposited on : 2009-10-05
Resolution : 1.75 Å(reported)

This is a Full wwPDB X-ray Structure Validation Report for a publicly released PDB entry.

We welcome your comments at validation@mail.wwpdb.org

A user guide is available at

<https://www.wwpdb.org/validation/2017/XrayValidationReportHelp>

with specific help available everywhere you see the ⓘ symbol.

The types of validation reports are described at

<http://www.wwpdb.org/validation/2017/FAQs#types>.

The following versions of software and data (see [references ⓘ](#)) were used in the production of this report:

MolProbity : 4.02b-467
Mogul : 1.8.5 (274361), CSD as541be (2020)
Xtriage (Phenix) : 1.13
EDS : 2.35
buster-report : 1.1.7 (2018)
Percentile statistics : 20191225.v01 (using entries in the PDB archive December 25th 2019)
Refmac : 5.8.0158
CCP4 : 7.0.044 (Gargrove)
Ideal geometry (proteins) : Engh & Huber (2001)
Ideal geometry (DNA, RNA) : Parkinson et al. (1996)
Validation Pipeline (wwPDB-VP) : 2.35

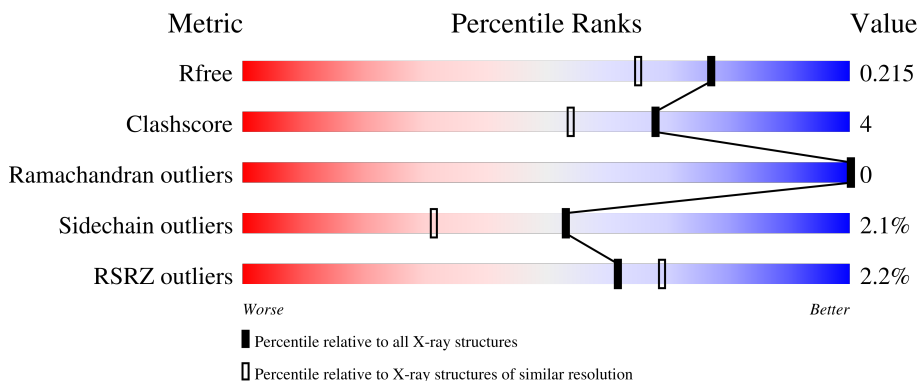
1 Overall quality at a glance

The following experimental techniques were used to determine the structure:

X-RAY DIFFRACTION

The reported resolution of this entry is 1.75 Å.

Percentile scores (ranging between 0-100) for global validation metrics of the entry are shown in the following graphic. The table shows the number of entries on which the scores are based.



Metric	Whole archive (#Entries)	Similar resolution (#Entries, resolution range(Å))
R_{free}	130704	2340 (1.76-1.76)
Clashscore	141614	2466 (1.76-1.76)
Ramachandran outliers	138981	2437 (1.76-1.76)
Sidechain outliers	138945	2437 (1.76-1.76)
RSRZ outliers	127900	2298 (1.76-1.76)

The table below summarises the geometric issues observed across the polymeric chains and their fit to the electron density. The red, orange, yellow and green segments of the lower bar indicate the fraction of residues that contain outliers for ≥ 3 , 2, 1 and 0 types of geometric quality criteria respectively. A grey segment represents the fraction of residues that are not modelled. The numeric value for each fraction is indicated below the corresponding segment, with a dot representing fractions $\leq 5\%$. The upper red bar (where present) indicates the fraction of residues that have poor fit to the electron density. The numeric value is given above the bar.

Mol	Chain	Length	Quality of chain
1	A	623	 2% 83% 8% 9%
1	B	623	 2% 82% 8% 9%

2 Entry composition [i](#)

There are 5 unique types of molecules in this entry. The entry contains 9832 atoms, of which 0 are hydrogens and 0 are deuteriums.

In the tables below, the ZeroOcc column contains the number of atoms modelled with zero occupancy, the AltConf column contains the number of residues with at least one atom in alternate conformation and the Trace column contains the number of residues modelled with at most 2 atoms.

- Molecule 1 is a protein called Pyranose 2-oxidase.

Mol	Chain	Residues	Atoms					ZeroOcc	AltConf	Trace
			Total	C	N	O	S			
1	A	567	4472	2821	768	859	24	0	0	0
1	B	567	4472	2821	768	859	24	0	0	0

There are 2 discrepancies between the modelled and reference sequences:

Chain	Residue	Modelled	Actual	Comment	Reference
A	454	ASN	PHE	engineered mutation	UNP Q7ZA32
B	454	ASN	PHE	engineered mutation	UNP Q7ZA32

- Molecule 2 is FLAVIN-ADENINE DINUCLEOTIDE (three-letter code: FAD) (formula: $C_{27}H_{33}N_9O_{15}P_2$).



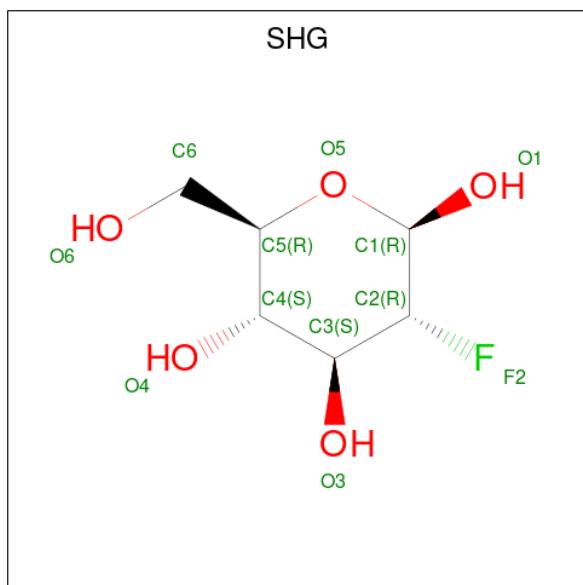
Mol	Chain	Residues	Atoms					ZeroOcc	AltConf
			Total	C	N	O	P		
2	A	1	53	27	9	15	2	0	0

Continued on next page...

Continued from previous page...

Mol	Chain	Residues	Atoms				ZeroOcc	AltConf	
			Total	C	N	O			P
2	B	1	53	27	9	15	2	0	0

- Molecule 3 is 2-deoxy-2-fluoro-beta-D-glucopyranose (three-letter code: SHG) (formula: $C_6H_{11}FO_5$).



Mol	Chain	Residues	Atoms				ZeroOcc	AltConf
			Total	C	F	O		
3	A	1	12	6	1	5	0	0
3	B	1	12	6	1	5	0	0

- Molecule 4 is 2-(N-MORPHOLINO)-ETHANESULFONIC ACID (three-letter code: MES) (formula: $C_6H_{13}NO_4S$).



Mol	Chain	Residues	Atoms					ZeroOcc	AltConf
			Total	C	N	O	S		
4	A	1	Total	C	N	O	S	0	0
			12	6	1	4	1		
4	B	1	Total	C	N	O	S	0	0
			12	6	1	4	1		
4	B	1	Total	C	N	O	S	0	0
			12	6	1	4	1		

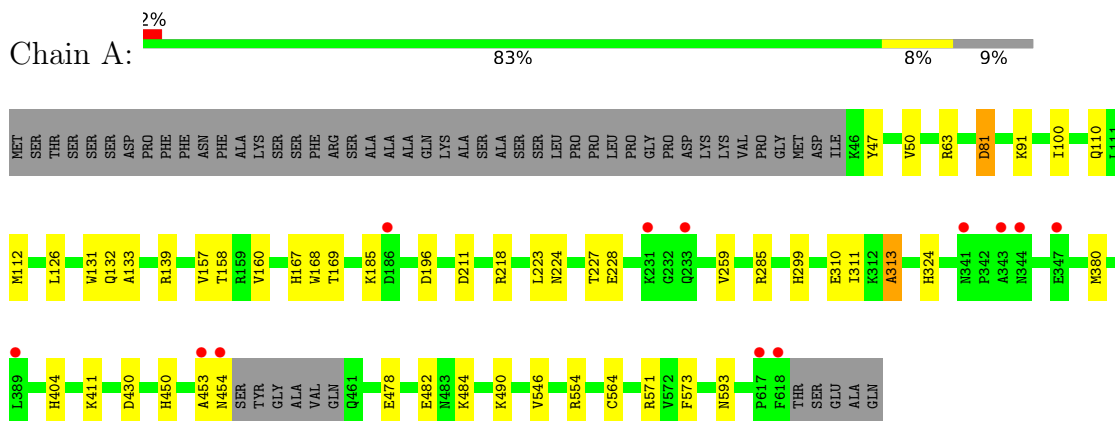
- Molecule 5 is water.

Mol	Chain	Residues	Atoms		ZeroOcc	AltConf
			Total	O		
5	A	372	Total	O	0	0
			372	372		
5	B	350	Total	O	0	0
			350	350		

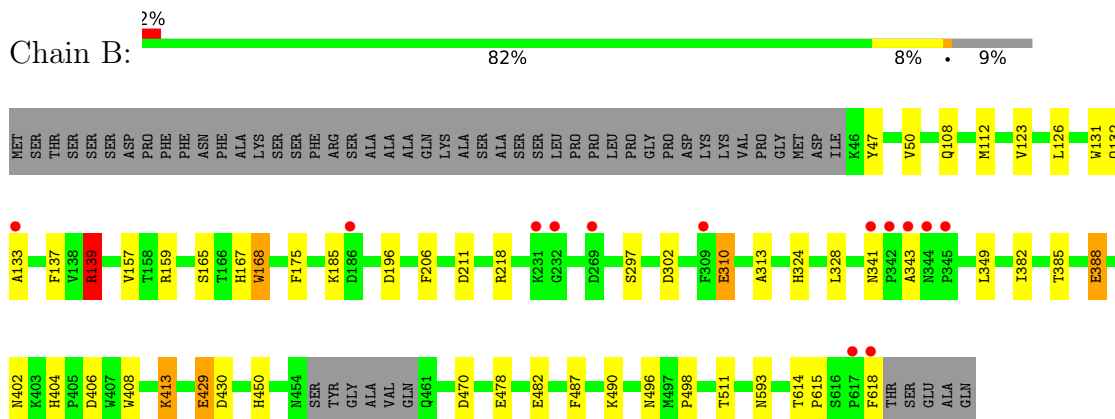
3 Residue-property plots [i](#)

These plots are drawn for all protein, RNA, DNA and oligosaccharide chains in the entry. The first graphic for a chain summarises the proportions of the various outlier classes displayed in the second graphic. The second graphic shows the sequence view annotated by issues in geometry and electron density. Residues are color-coded according to the number of geometric quality criteria for which they contain at least one outlier: green = 0, yellow = 1, orange = 2 and red = 3 or more. A red dot above a residue indicates a poor fit to the electron density ($RSRZ > 2$). Stretches of 2 or more consecutive residues without any outlier are shown as a green connector. Residues present in the sample, but not in the model, are shown in grey.

- Molecule 1: Pyranose 2-oxidase



- Molecule 1: Pyranose 2-oxidase



4 Data and refinement statistics i

Property	Value	Source
Space group	P 43 21 2	Depositor
Cell constants a, b, c, α , β , γ	101.57Å 101.57Å 250.05Å 90.00° 90.00° 90.00°	Depositor
Resolution (Å)	30.00 – 1.75 28.66 – 1.75	Depositor EDS
% Data completeness (in resolution range)	99.9 (30.00-1.75) 99.9 (28.66-1.75)	Depositor EDS
R_{merge}	(Not available)	Depositor
R_{sym}	0.10	Depositor
$\langle I/\sigma(I) \rangle$ ¹	2.56 (at 1.75Å)	Xtrriage
Refinement program	REFMAC 5.2.0019	Depositor
R, R_{free}	0.175 , 0.209 0.182 , 0.215	Depositor DCC
R_{free} test set	1974 reflections (1.50%)	wwPDB-VP
Wilson B-factor (Å ²)	15.8	Xtrriage
Anisotropy	0.051	Xtrriage
Bulk solvent k_{sol} (e/Å ³), B_{sol} (Å ²)	0.38 , 52.6	EDS
L-test for twinning ²	$\langle L \rangle = 0.46$, $\langle L^2 \rangle = 0.29$	Xtrriage
Estimated twinning fraction	No twinning to report.	Xtrriage
F_o, F_c correlation	0.95	EDS
Total number of atoms	9832	wwPDB-VP
Average B, all atoms (Å ²)	16.0	wwPDB-VP

Xtrriage's analysis on translational NCS is as follows: *The analyses of the Patterson function reveals a significant off-origin peak that is 20.98 % of the origin peak, indicating pseudo-translational symmetry. The chance of finding a peak of this or larger height randomly in a structure without pseudo-translational symmetry is equal to 7.7233e-03.*

¹Intensities estimated from amplitudes.

²Theoretical values of $\langle |L| \rangle$, $\langle L^2 \rangle$ for acentric reflections are 0.5, 0.333 respectively for untwinned datasets, and 0.375, 0.2 for perfectly twinned datasets.

5 Model quality [i](#)

5.1 Standard geometry [i](#)

Bond lengths and bond angles in the following residue types are not validated in this section: SHG, FAD, MES

The Z score for a bond length (or angle) is the number of standard deviations the observed value is removed from the expected value. A bond length (or angle) with $|Z| > 5$ is considered an outlier worth inspection. RMSZ is the root-mean-square of all Z scores of the bond lengths (or angles).

Mol	Chain	Bond lengths		Bond angles	
		RMSZ	# Z >5	RMSZ	# Z >5
1	A	1.02	6/4585 (0.1%)	0.95	9/6233 (0.1%)
1	B	0.99	5/4585 (0.1%)	0.96	13/6233 (0.2%)
All	All	1.01	11/9170 (0.1%)	0.95	22/12466 (0.2%)

All (11) bond length outliers are listed below:

Mol	Chain	Res	Type	Atoms	Z	Observed(Å)	Ideal(Å)
1	A	478	GLU	CD-OE1	8.21	1.34	1.25
1	B	211	ASP	CG-OD1	6.95	1.41	1.25
1	A	411	LYS	CD-CE	6.54	1.67	1.51
1	B	388	GLU	CG-CD	5.94	1.60	1.51
1	B	108	GLN	CG-CD	5.74	1.64	1.51
1	A	211	ASP	CB-CG	5.60	1.63	1.51
1	A	313	ALA	CA-CB	5.54	1.64	1.52
1	A	482	GLU	CG-CD	5.52	1.60	1.51
1	B	413	LYS	CE-NZ	5.51	1.62	1.49
1	A	484	LYS	CE-NZ	-5.31	1.35	1.49
1	B	482	GLU	CD-OE1	5.06	1.31	1.25

All (22) bond angle outliers are listed below:

Mol	Chain	Res	Type	Atoms	Z	Observed(°)	Ideal(°)
1	A	211	ASP	CB-CG-OD1	11.46	128.62	118.30
1	B	139	ARG	NE-CZ-NH1	11.00	125.80	120.30
1	B	211	ASP	CB-CG-OD1	10.98	128.18	118.30
1	A	139	ARG	NE-CZ-NH1	10.53	125.56	120.30
1	B	211	ASP	CB-CG-OD2	-10.24	109.09	118.30
1	A	81	ASP	CB-CG-OD1	-9.41	109.83	118.30
1	A	196	ASP	CB-CG-OD1	8.63	126.07	118.30
1	B	470	ASP	CB-CG-OD1	8.38	125.84	118.30

Continued on next page...

Continued from previous page...

Mol	Chain	Res	Type	Atoms	Z	Observed(°)	Ideal(°)
1	B	139	ARG	NE-CZ-NH2	-7.79	116.40	120.30
1	A	139	ARG	NE-CZ-NH2	-7.65	116.47	120.30
1	A	411	LYS	CD-CE-NZ	7.55	129.07	111.70
1	B	470	ASP	CB-CG-OD2	-7.39	111.65	118.30
1	B	159	ARG	NE-CZ-NH1	6.71	123.66	120.30
1	B	406	ASP	CB-CG-OD1	6.61	124.25	118.30
1	B	302	ASP	CB-CG-OD1	6.59	124.23	118.30
1	A	554	ARG	NE-CZ-NH1	5.89	123.24	120.30
1	B	196	ASP	CB-CG-OD1	5.61	123.34	118.30
1	B	175	PHE	CB-CG-CD2	-5.55	116.91	120.80
1	A	380	MET	CG-SD-CE	-5.37	91.62	100.20
1	B	349	LEU	CA-CB-CG	5.16	127.17	115.30
1	A	571	ARG	NE-CZ-NH1	5.14	122.87	120.30
1	B	406	ASP	CB-CG-OD2	-5.06	113.75	118.30

There are no chirality outliers.

There are no planarity outliers.

5.2 Too-close contacts

In the following table, the Non-H and H(model) columns list the number of non-hydrogen atoms and hydrogen atoms in the chain respectively. The H(added) column lists the number of hydrogen atoms added and optimized by MolProbity. The Clashes column lists the number of clashes within the asymmetric unit, whereas Symm-Clashes lists symmetry-related clashes.

Mol	Chain	Non-H	H(model)	H(added)	Clashes	Symm-Clashes
1	A	4472	0	4321	28	0
1	B	4472	0	4321	34	0
2	A	53	0	30	5	0
2	B	53	0	30	10	0
3	A	12	0	11	2	0
3	B	12	0	11	1	0
4	A	12	0	12	1	0
4	B	24	0	24	3	0
5	A	372	0	0	2	0
5	B	350	0	0	4	0
All	All	9832	0	8760	66	0

The all-atom clashscore is defined as the number of clashes found per 1000 atoms (including hydrogen atoms). The all-atom clashscore for this structure is 4.

All (66) close contacts within the same asymmetric unit are listed below, sorted by their clash

magnitude.

Atom-1	Atom-2	Interatomic distance (Å)	Clash overlap (Å)
1:B:167:HIS:HE2	2:B:801:FAD:C8M	0.90	1.53
1:B:167:HIS:NE2	2:B:801:FAD:HM82	0.91	1.22
1:B:167:HIS:CD2	2:B:801:FAD:HM82	1.89	1.06
1:B:167:HIS:HE2	2:B:801:FAD:HM81	1.27	1.00
1:B:167:HIS:CE1	2:B:801:FAD:HM82	2.04	0.91
1:A:110:GLN:HE21	1:A:167:HIS:HD1	1.25	0.82
1:A:167:HIS:CE1	2:A:801:FAD:C8M	2.68	0.73
1:B:131:TRP:CH2	1:B:133:ALA:HB2	2.27	0.70
1:B:413:LYS:HE3	5:B:1611:HOH:O	1.92	0.69
1:A:167:HIS:CD2	2:A:801:FAD:C8M	2.73	0.66
1:B:167:HIS:HE2	2:B:801:FAD:C8	1.96	0.66
4:A:902:MES:O3S	4:A:902:MES:H51	1.95	0.65
1:A:126:LEU:HD12	1:A:132:GLN:HG3	1.79	0.63
1:B:167:HIS:CE1	2:B:801:FAD:C8M	2.74	0.63
1:A:91:LYS:HD2	1:A:100:ILE:HD11	1.82	0.61
1:B:404:HIS:HE1	5:B:1512:HOH:O	1.84	0.60
1:B:126:LEU:HD12	1:B:132:GLN:HG3	1.82	0.60
1:A:157:VAL:HG21	1:A:324:HIS:HE1	1.68	0.59
1:B:126:LEU:CD1	1:B:132:GLN:HG3	2.33	0.59
1:B:123:VAL:HB	4:B:902:MES:H62	1.87	0.56
1:A:285:ARG:NH2	1:A:299:HIS:ND1	2.54	0.55
1:A:158:THR:HG22	1:A:160:VAL:HG22	1.89	0.55
1:A:131:TRP:CH2	1:A:133:ALA:HB2	2.42	0.54
1:A:126:LEU:HD12	1:A:132:GLN:CG	2.37	0.54
1:A:126:LEU:CD1	1:A:132:GLN:CG	2.86	0.54
1:B:131:TRP:HH2	1:B:133:ALA:HB2	1.72	0.54
1:B:402:ASN:HB2	4:B:903:MES:H32	1.91	0.53
1:B:47:TYR:O	1:B:313:ALA:HA	2.10	0.52
1:A:404:HIS:HE1	5:A:1437:HOH:O	1.94	0.51
1:A:81:ASP:OD1	1:A:81:ASP:C	2.49	0.51
1:B:126:LEU:CD1	1:B:132:GLN:CG	2.88	0.51
1:A:63:ARG:HD3	1:A:259:VAL:O	2.11	0.50
2:B:801:FAD:N5	3:B:901:SHG:H3	2.26	0.50
1:A:310:GLU:O	1:A:311:ILE:HD13	2.12	0.50
1:A:223:LEU:O	1:A:227:THR:HG23	2.11	0.49
2:A:801:FAD:N5	3:A:901:SHG:H3	2.28	0.49
1:B:297:SER:OG	1:B:310:GLU:OE1	2.28	0.49
1:A:167:HIS:NE2	2:A:801:FAD:C8	2.66	0.48
1:A:224:ASN:O	1:A:228:GLU:HG3	2.13	0.48
1:B:297:SER:CB	1:B:310:GLU:OE1	2.61	0.48
1:B:131:TRP:O	1:B:132:GLN:HG2	2.14	0.47

Continued on next page...

Continued from previous page...

Atom-1	Atom-2	Interatomic distance (Å)	Clash overlap (Å)
1:B:614:THR:HG22	1:B:615:PRO:O	2.14	0.47
1:A:131:TRP:HH2	1:A:133:ALA:HB2	1.80	0.47
1:B:167:HIS:NE2	2:B:801:FAD:HM81	2.00	0.47
1:A:546:VAL:HA	3:A:901:SHG:H6A	1.96	0.47
1:A:50:VAL:HG13	1:A:313:ALA:HB2	1.96	0.47
1:A:218:ARG:HD2	5:A:1216:HOH:O	2.17	0.45
1:A:167:HIS:NE2	2:A:801:FAD:HM81	2.06	0.45
1:A:564:CYS:HG	1:A:573:PHE:HE2	1.65	0.45
1:B:478:GLU:HG3	1:B:511:THR:OG1	2.17	0.45
1:B:167:HIS:NE2	2:B:801:FAD:C8	2.66	0.44
1:A:47:TYR:O	1:A:313:ALA:HA	2.17	0.44
1:B:487:PHE:HB3	1:B:498:PRO:HB2	2.00	0.44
1:B:137:PHE:O	1:B:139:ARG:HD3	2.19	0.43
1:A:453:ALA:O	1:A:454:ASN:C	2.55	0.43
1:B:50:VAL:HG13	1:B:313:ALA:HB2	2.01	0.43
1:B:165:SER:HA	1:B:168:TRP:CD1	2.54	0.42
1:B:382:ILE:HD13	5:B:1526:HOH:O	2.18	0.42
1:B:341:ASN:OD1	1:B:343:ALA:HB3	2.19	0.42
1:A:218:ARG:HG3	1:A:430:ASP:OD2	2.21	0.41
1:B:218:ARG:HG3	1:B:430:ASP:OD2	2.20	0.41
1:A:169:THR:HG22	1:A:169:THR:O	2.20	0.41
1:B:157:VAL:HG21	1:B:324:HIS:HE1	1.85	0.41
4:B:902:MES:H51	4:B:902:MES:H82	1.89	0.41
1:B:429:GLU:CD	5:B:1696:HOH:O	2.59	0.41
1:B:185:LYS:H	1:B:185:LYS:HG2	1.76	0.40

There are no symmetry-related clashes.

5.3 Torsion angles [i](#)

5.3.1 Protein backbone [i](#)

In the following table, the Percentiles column shows the percent Ramachandran outliers of the chain as a percentile score with respect to all X-ray entries followed by that with respect to entries of similar resolution.

The Analysed column shows the number of residues for which the backbone conformation was analysed, and the total number of residues.

Mol	Chain	Analysed	Favoured	Allowed	Outliers	Percentiles
1	A	563/623 (90%)	549 (98%)	14 (2%)	0	100 100

Continued on next page...

Continued from previous page...

Mol	Chain	Analysed	Favoured	Allowed	Outliers	Percentiles	
1	B	563/623 (90%)	546 (97%)	17 (3%)	0	100	100
All	All	1126/1246 (90%)	1095 (97%)	31 (3%)	0	100	100

There are no Ramachandran outliers to report.

5.3.2 Protein sidechains [i](#)

In the following table, the Percentiles column shows the percent sidechain outliers of the chain as a percentile score with respect to all X-ray entries followed by that with respect to entries of similar resolution.

The Analysed column shows the number of residues for which the sidechain conformation was analysed, and the total number of residues.

Mol	Chain	Analysed	Rotameric	Outliers	Percentiles	
1	A	497/542 (92%)	491 (99%)	6 (1%)	71	56
1	B	497/542 (92%)	482 (97%)	15 (3%)	41	18
All	All	994/1084 (92%)	973 (98%)	21 (2%)	53	31

All (21) residues with a non-rotameric sidechain are listed below:

Mol	Chain	Res	Type
1	A	112	MET
1	A	168	TRP
1	A	185	LYS
1	A	450	HIS
1	A	490	LYS
1	A	593	ASN
1	B	112	MET
1	B	139	ARG
1	B	168	TRP
1	B	206	PHE
1	B	310	GLU
1	B	328	LEU
1	B	385	THR
1	B	388	GLU
1	B	408	TRP
1	B	429	GLU
1	B	450	HIS
1	B	490	LYS

Continued on next page...

Continued from previous page...

Mol	Chain	Res	Type
1	B	496	ASN
1	B	593	ASN
1	B	618	PHE

Sometimes sidechains can be flipped to improve hydrogen bonding and reduce clashes. All (7) such sidechains are listed below:

Mol	Chain	Res	Type
1	A	233	GLN
1	A	324	HIS
1	A	344	ASN
1	A	404	HIS
1	A	563	ASN
1	B	233	GLN
1	B	404	HIS

5.3.3 RNA [i](#)

There are no RNA molecules in this entry.

5.4 Non-standard residues in protein, DNA, RNA chains [i](#)

There are no non-standard protein/DNA/RNA residues in this entry.

5.5 Carbohydrates [i](#)

There are no monosaccharides in this entry.

5.6 Ligand geometry [i](#)

7 ligands are modelled in this entry.

In the following table, the Counts columns list the number of bonds (or angles) for which Mogul statistics could be retrieved, the number of bonds (or angles) that are observed in the model and the number of bonds (or angles) that are defined in the Chemical Component Dictionary. The Link column lists molecule types, if any, to which the group is linked. The Z score for a bond length (or angle) is the number of standard deviations the observed value is removed from the expected value. A bond length (or angle) with $|Z| > 2$ is considered an outlier worth inspection. RMSZ is the root-mean-square of all Z scores of the bond lengths (or angles).

Mol	Type	Chain	Res	Link	Bond lengths			Bond angles		
					Counts	RMSZ	# Z > 2	Counts	RMSZ	# Z > 2
3	SHG	B	901	-	12,12,12	0.78	0	16,17,17	3.76	9 (56%)
3	SHG	A	901	-	12,12,12	0.84	0	16,17,17	3.68	8 (50%)
2	FAD	B	801	1	53,58,58	1.35	9 (16%)	68,89,89	1.70	15 (22%)
2	FAD	A	801	1	53,58,58	1.41	9 (16%)	68,89,89	1.87	19 (27%)
4	MES	A	902	-	12,12,12	1.73	1 (8%)	14,16,16	5.30	7 (50%)
4	MES	B	903	-	12,12,12	2.08	1 (8%)	14,16,16	5.47	8 (57%)
4	MES	B	902	-	12,12,12	1.78	1 (8%)	14,16,16	5.15	6 (42%)

In the following table, the Chirals column lists the number of chiral outliers, the number of chiral centers analysed, the number of these observed in the model and the number defined in the Chemical Component Dictionary. Similar counts are reported in the Torsion and Rings columns. '-' means no outliers of that kind were identified.

Mol	Type	Chain	Res	Link	Chirals	Torsions	Rings
3	SHG	B	901	-	-	0/2/22/22	0/1/1/1
3	SHG	A	901	-	-	1/2/22/22	0/1/1/1
2	FAD	B	801	1	-	2/30/50/50	0/6/6/6
2	FAD	A	801	1	-	2/30/50/50	0/6/6/6
4	MES	A	902	-	-	1/6/14/14	0/1/1/1
4	MES	B	903	-	-	2/6/14/14	0/1/1/1
4	MES	B	902	-	-	2/6/14/14	0/1/1/1

All (21) bond length outliers are listed below:

Mol	Chain	Res	Type	Atoms	Z	Observed(Å)	Ideal(Å)
4	B	903	MES	C8-S	-6.96	1.67	1.77
4	B	902	MES	C8-S	-5.73	1.69	1.77
4	A	902	MES	C8-S	-5.21	1.70	1.77
2	A	801	FAD	C4X-N5	4.17	1.38	1.30
2	A	801	FAD	C6-C5X	3.36	1.45	1.40
2	B	801	FAD	C10-N1	3.35	1.40	1.33
2	A	801	FAD	C4A-N3A	-3.07	1.31	1.35
2	B	801	FAD	C2A-N3A	2.90	1.36	1.32
2	B	801	FAD	O4B-C4B	-2.79	1.38	1.45
2	B	801	FAD	C4X-N5	2.53	1.35	1.30
2	A	801	FAD	C2-N1	-2.52	1.30	1.36
2	A	801	FAD	C10-N10	2.48	1.42	1.37
2	A	801	FAD	C2B-C1B	-2.42	1.50	1.53
2	B	801	FAD	C2B-C1B	-2.40	1.50	1.53
2	B	801	FAD	O2B-C2B	-2.29	1.37	1.43

Continued on next page...

Continued from previous page...

Mol	Chain	Res	Type	Atoms	Z	Observed(Å)	Ideal(Å)
2	B	801	FAD	O2-C2	2.22	1.28	1.24
2	A	801	FAD	C2B-C3B	-2.12	1.47	1.53
2	A	801	FAD	O3B-C3B	-2.11	1.38	1.43
2	A	801	FAD	C10-N1	2.07	1.37	1.33
2	B	801	FAD	C2A-N1A	2.02	1.37	1.33
2	B	801	FAD	C4X-C10	-2.00	1.38	1.44

All (72) bond angle outliers are listed below:

Mol	Chain	Res	Type	Atoms	Z	Observed(°)	Ideal(°)
4	B	902	MES	O3S-S-C8	-14.27	82.69	105.77
4	B	903	MES	O1S-S-C8	-14.25	89.75	106.92
4	A	902	MES	O3S-S-C8	-13.31	84.24	105.77
4	B	903	MES	O2S-S-C8	-10.18	94.66	106.92
4	A	902	MES	O1S-S-C8	-10.16	94.68	106.92
3	B	901	SHG	F2-C2-C3	9.55	117.33	108.85
3	A	901	SHG	F2-C2-C1	7.72	116.31	107.77
4	B	902	MES	C5-N4-C3	6.58	123.65	108.83
2	B	801	FAD	N3A-C2A-N1A	-6.45	118.59	128.68
4	B	902	MES	O1S-S-C8	-6.42	99.18	106.92
3	A	901	SHG	F2-C2-C3	6.41	114.55	108.85
4	A	902	MES	C5-N4-C3	6.35	123.13	108.83
4	B	902	MES	O3S-S-O1S	6.30	126.66	111.27
2	A	801	FAD	N3A-C2A-N1A	-6.29	118.84	128.68
3	B	901	SHG	O5-C5-C4	6.08	120.73	109.69
4	A	902	MES	O3S-S-O1S	6.07	126.10	111.27
3	A	901	SHG	O5-C5-C4	5.91	120.43	109.69
3	A	901	SHG	O5-C1-C2	5.65	117.09	109.80
4	B	903	MES	C5-N4-C3	5.55	121.33	108.83
3	B	901	SHG	C1-O5-C5	5.25	123.56	113.66
4	B	903	MES	O3S-S-O1S	5.09	123.70	111.27
3	A	901	SHG	C1-O5-C5	4.87	122.86	113.66
4	B	902	MES	O1-C2-C3	-4.74	101.35	111.80
2	A	801	FAD	O4-C4-N3	4.66	129.04	120.12
4	B	903	MES	C7-N4-C3	4.39	122.47	111.23
3	B	901	SHG	O5-C1-C2	4.39	115.46	109.80
3	B	901	SHG	F2-C2-C1	4.22	112.44	107.77
2	B	801	FAD	C2A-N1A-C6A	4.17	125.88	118.75
4	A	902	MES	C7-N4-C5	3.90	121.22	111.23
4	B	902	MES	C7-N4-C5	3.89	121.18	111.23
4	B	903	MES	O3S-S-C8	-3.85	99.54	105.77
2	B	801	FAD	O3B-C3B-C4B	3.84	122.15	111.05

Continued on next page...

Continued from previous page...

Mol	Chain	Res	Type	Atoms	Z	Observed(°)	Ideal(°)
2	A	801	FAD	O4B-C4B-C3B	3.76	112.56	105.11
2	A	801	FAD	O4-C4-C4X	-3.73	116.70	126.60
2	A	801	FAD	O3B-C3B-C4B	3.43	120.97	111.05
3	B	901	SHG	C1-C2-C3	3.16	115.47	110.75
2	A	801	FAD	C2A-N1A-C6A	3.15	124.13	118.75
3	B	901	SHG	O3-C3-C4	3.07	117.44	110.35
2	A	801	FAD	O2-C2-N1	-3.00	116.85	121.83
2	A	801	FAD	C10-C4X-N5	-2.98	118.53	124.86
2	A	801	FAD	C3B-C2B-C1B	2.90	105.35	100.98
2	B	801	FAD	O2B-C2B-C3B	2.88	121.12	111.82
2	A	801	FAD	C1'-N10-C9A	2.87	125.29	120.51
2	A	801	FAD	C4-C4X-N5	2.85	122.28	118.23
2	B	801	FAD	O3B-C3B-C2B	2.79	120.85	111.82
4	B	903	MES	C2-C3-N4	2.75	114.28	110.10
4	B	903	MES	O3S-S-O2S	2.67	117.80	111.27
2	A	801	FAD	C4X-C10-N10	2.66	120.38	116.48
3	A	901	SHG	C1-C2-C3	2.58	114.61	110.75
4	A	902	MES	O1-C2-C3	-2.53	106.23	111.80
2	A	801	FAD	C5A-C6A-N6A	2.48	124.12	120.35
2	B	801	FAD	C5B-C4B-C3B	2.47	124.45	115.18
3	A	901	SHG	O3-C3-C4	2.42	115.95	110.35
2	A	801	FAD	C5B-C4B-C3B	2.42	124.24	115.18
2	A	801	FAD	C8M-C8-C9	-2.38	115.09	119.49
3	A	901	SHG	O6-C6-C5	-2.36	103.18	111.29
4	A	902	MES	O2S-S-C8	2.35	109.74	106.92
2	A	801	FAD	C5A-C6A-N1A	-2.33	115.07	120.35
2	B	801	FAD	C4X-C10-N1	-2.31	119.38	124.73
2	B	801	FAD	C3B-C2B-C1B	2.24	104.35	100.98
2	B	801	FAD	C5A-C6A-N6A	2.22	123.72	120.35
2	B	801	FAD	O2A-PA-O1A	2.19	123.09	112.24
2	B	801	FAD	O2B-C2B-C1B	2.19	118.93	110.85
3	B	901	SHG	C6-C5-C4	2.16	118.07	113.00
2	A	801	FAD	O4B-C1B-C2B	2.15	110.06	106.93
2	B	801	FAD	O2-C2-N3	2.14	122.81	118.65
2	A	801	FAD	O2B-C2B-C3B	2.09	118.57	111.82
2	B	801	FAD	C10-N1-C2	2.08	121.05	116.90
3	B	901	SHG	O6-C6-C5	-2.03	104.31	111.29
2	B	801	FAD	O5'-P-O1P	-2.02	101.16	109.07
2	B	801	FAD	O4B-C4B-C5B	2.02	116.02	109.37
2	A	801	FAD	O2B-C2B-C1B	2.01	118.29	110.85

There are no chirality outliers.

All (10) torsion outliers are listed below:

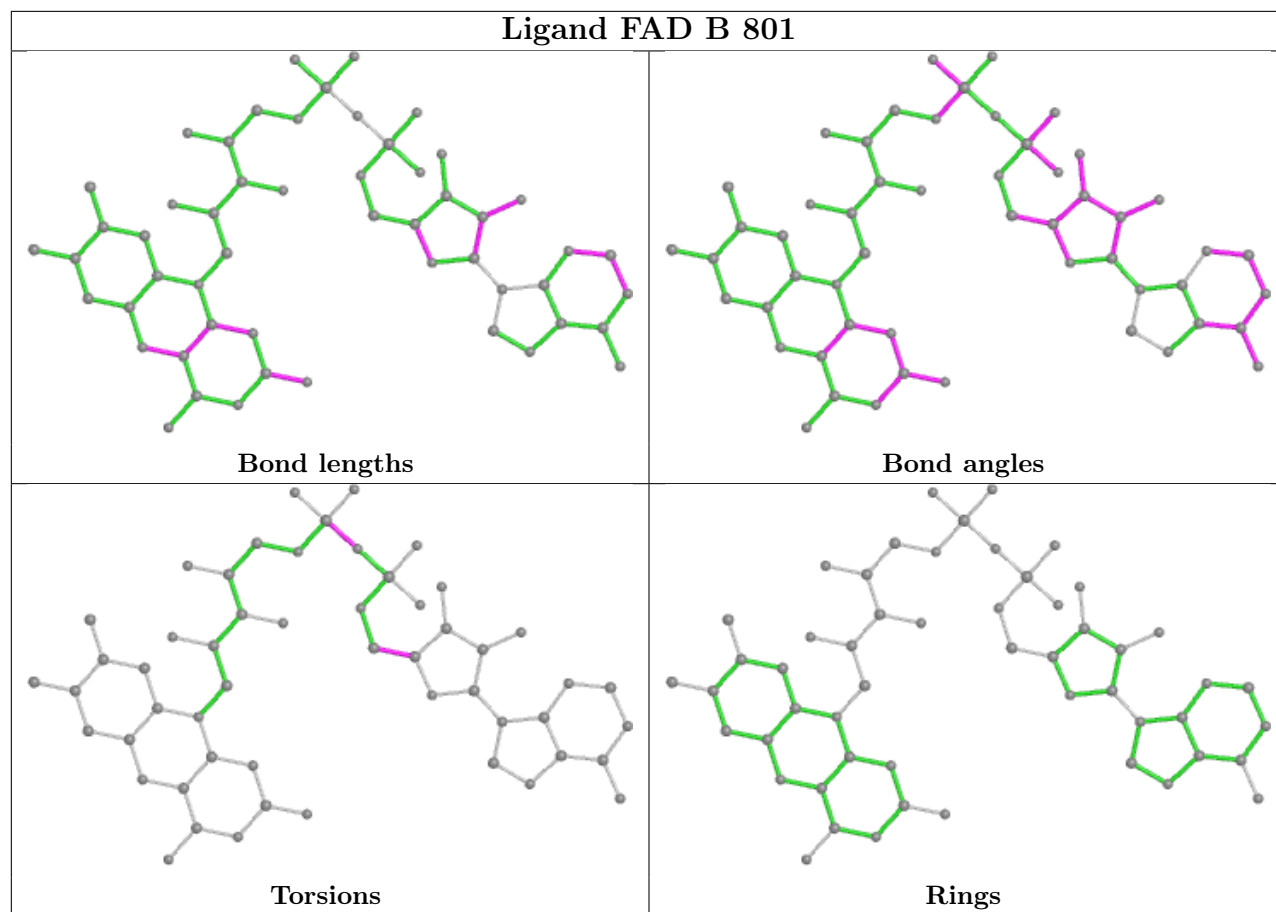
Mol	Chain	Res	Type	Atoms
2	A	801	FAD	PA-O3P-P-O5'
2	B	801	FAD	PA-O3P-P-O5'
4	A	902	MES	C8-C7-N4-C5
4	B	902	MES	C8-C7-N4-C5
4	B	902	MES	N4-C7-C8-S
4	B	903	MES	C8-C7-N4-C3
3	A	901	SHG	C4-C5-C6-O6
2	A	801	FAD	O4B-C4B-C5B-O5B
2	B	801	FAD	O4B-C4B-C5B-O5B
4	B	903	MES	N4-C7-C8-S

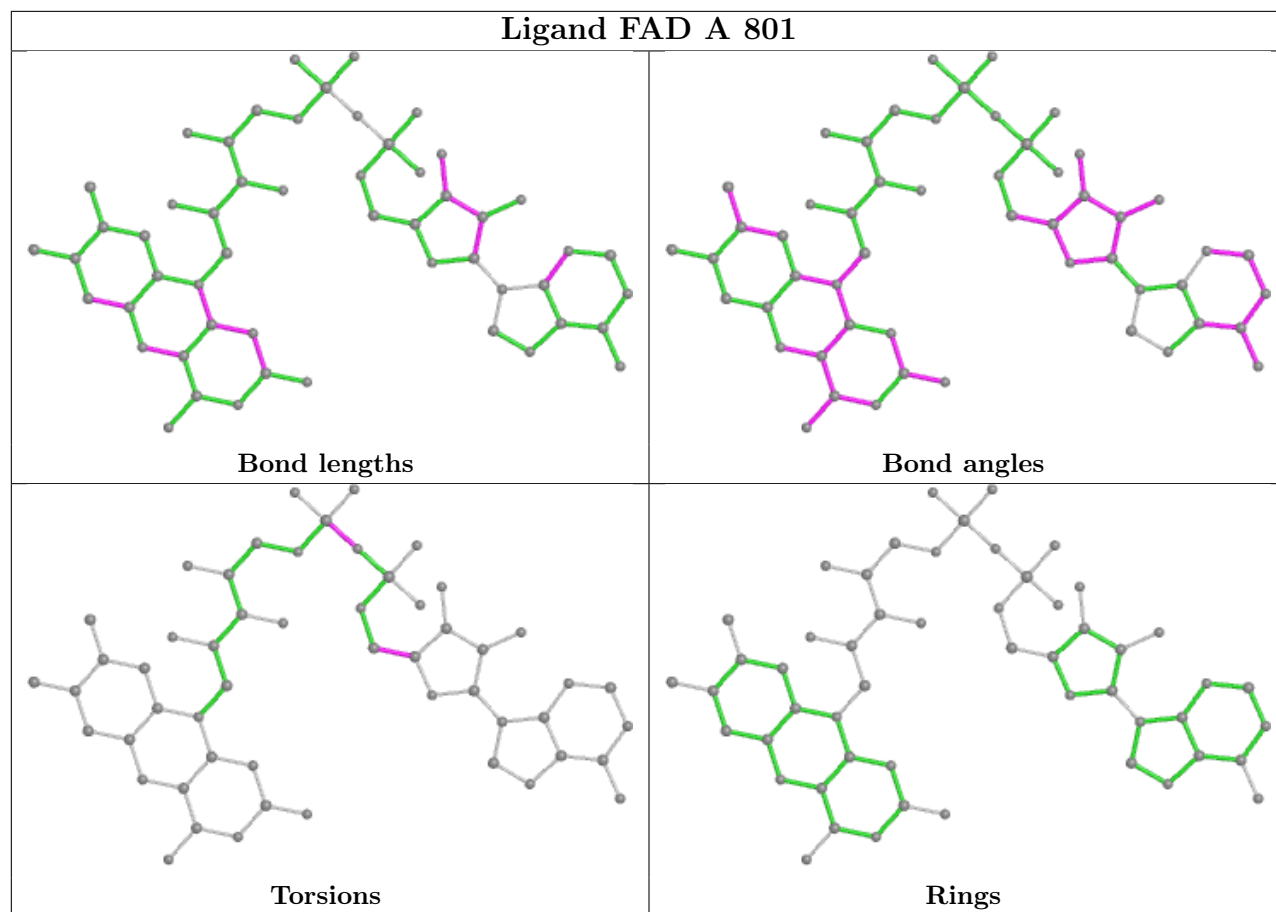
There are no ring outliers.

7 monomers are involved in 20 short contacts:

Mol	Chain	Res	Type	Clashes	Symm-Clashes
3	B	901	SHG	1	0
3	A	901	SHG	2	0
2	B	801	FAD	10	0
2	A	801	FAD	5	0
4	A	902	MES	1	0
4	B	903	MES	1	0
4	B	902	MES	2	0

The following is a two-dimensional graphical depiction of Mogul quality analysis of bond lengths, bond angles, torsion angles, and ring geometry for all instances of the Ligand of Interest. In addition, ligands with molecular weight > 250 and outliers as shown on the validation Tables will also be included. For torsion angles, if less than 5% of the Mogul distribution of torsion angles is within 10 degrees of the torsion angle in question, then that torsion angle is considered an outlier. Any bond that is central to one or more torsion angles identified as an outlier by Mogul will be highlighted in the graph. For rings, the root-mean-square deviation (RMSD) between the ring in question and similar rings identified by Mogul is calculated over all ring torsion angles. If the average RMSD is greater than 60 degrees and the minimal RMSD between the ring in question and any Mogul-identified rings is also greater than 60 degrees, then that ring is considered an outlier. The outliers are highlighted in purple. The color gray indicates Mogul did not find sufficient equivalents in the CSD to analyse the geometry.





5.7 Other polymers [i](#)

There are no such residues in this entry.

5.8 Polymer linkage issues [i](#)

There are no chain breaks in this entry.

6 Fit of model and data

6.1 Protein, DNA and RNA chains

In the following table, the column labelled ‘#RSRZ > 2’ contains the number (and percentage) of RSRZ outliers, followed by percent RSRZ outliers for the chain as percentile scores relative to all X-ray entries and entries of similar resolution. The OWAB column contains the minimum, median, 95th percentile and maximum values of the occupancy-weighted average B-factor per residue. The column labelled ‘Q < 0.9’ lists the number of (and percentage) of residues with an average occupancy less than 0.9.

Mol	Chain	Analysed	<RSRZ>	#RSRZ>2	OWAB(Å ²)	Q<0.9
1	A	567/623 (91%)	-0.26	12 (2%) 63 71	8, 13, 26, 42	0
1	B	567/623 (91%)	-0.06	13 (2%) 60 67	8, 15, 29, 48	0
All	All	1134/1246 (91%)	-0.16	25 (2%) 62 69	8, 14, 28, 48	0

All (25) RSRZ outliers are listed below:

Mol	Chain	Res	Type	RSRZ
1	B	343	ALA	8.2
1	B	618	PHE	5.8
1	A	618	PHE	5.7
1	B	232	GLY	5.0
1	B	617	PRO	4.4
1	A	343	ALA	4.2
1	B	344	ASN	3.9
1	B	345	PRO	3.6
1	B	342	PRO	3.4
1	A	344	ASN	3.3
1	B	231	LYS	2.9
1	A	617	PRO	2.7
1	A	341	ASN	2.7
1	A	453	ALA	2.5
1	B	269	ASP	2.4
1	A	389	LEU	2.4
1	A	347	GLU	2.4
1	A	231	LYS	2.4
1	B	186	ASP	2.3
1	B	309	PHE	2.3
1	A	186	ASP	2.2
1	B	341	ASN	2.1
1	A	454	ASN	2.0
1	B	133	ALA	2.0

Continued on next page...

Continued from previous page...

Mol	Chain	Res	Type	RSRZ
1	A	233	GLN	2.0

6.2 Non-standard residues in protein, DNA, RNA chains [i](#)

There are no non-standard protein/DNA/RNA residues in this entry.

6.3 Carbohydrates [i](#)

There are no monosaccharides in this entry.

6.4 Ligands [i](#)

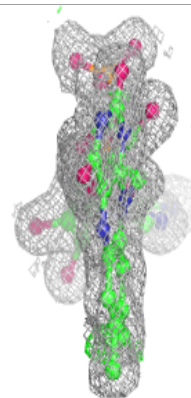
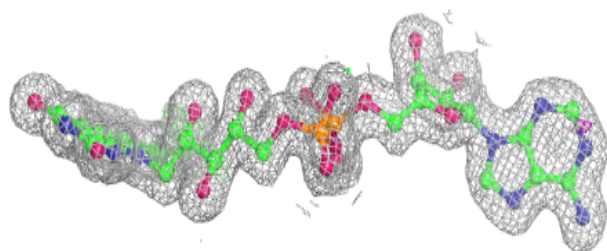
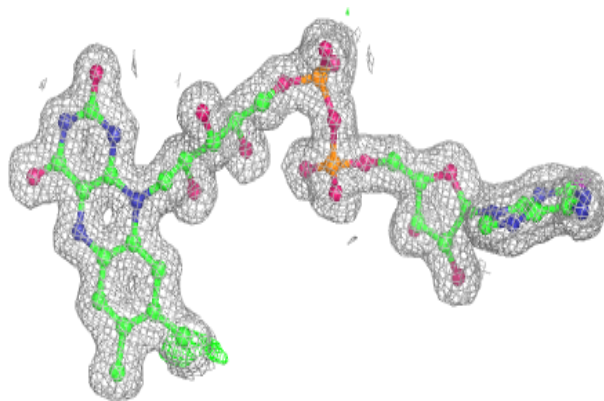
In the following table, the Atoms column lists the number of modelled atoms in the group and the number defined in the chemical component dictionary. The B-factors column lists the minimum, median, 95th percentile and maximum values of B factors of atoms in the group. The column labelled 'Q<0.9' lists the number of atoms with occupancy less than 0.9.

Mol	Type	Chain	Res	Atoms	RSCC	RSR	B-factors(Å ²)	Q<0.9
3	SHG	A	901	12/12	0.91	0.10	29,31,33,34	0
3	SHG	B	901	12/12	0.91	0.11	27,32,37,38	0
4	MES	B	902	12/12	0.92	0.23	24,30,33,35	0
4	MES	A	902	12/12	0.93	0.17	23,30,32,33	0
2	FAD	A	801	53/53	0.98	0.06	8,12,16,16	0
2	FAD	B	801	53/53	0.98	0.07	9,14,17,21	0
4	MES	B	903	12/12	0.98	0.10	26,32,37,38	0

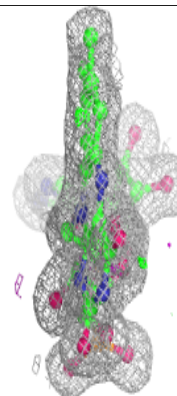
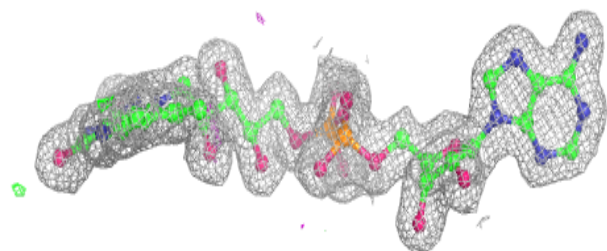
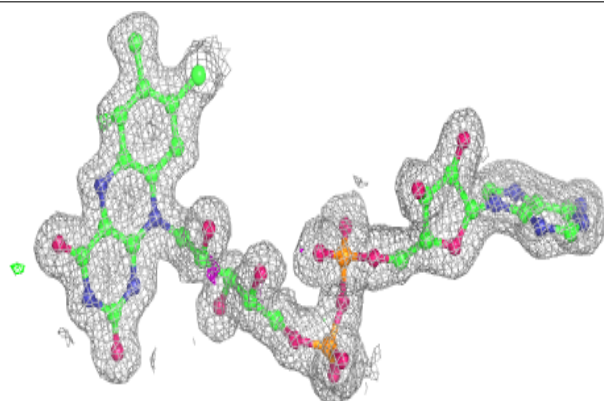
The following is a graphical depiction of the model fit to experimental electron density of all instances of the Ligand of Interest. In addition, ligands with molecular weight > 250 and outliers as shown on the geometry validation Tables will also be included. Each fit is shown from different orientation to approximate a three-dimensional view.

Electron density around FAD A 801:

$2mF_o-DF_c$ (at 0.7 rmsd) in gray
 mF_o-DF_c (at 3 rmsd) in purple (negative)
and green (positive)

**Electron density around FAD B 801:**

$2mF_o-DF_c$ (at 0.7 rmsd) in gray
 mF_o-DF_c (at 3 rmsd) in purple (negative)
and green (positive)



6.5 Other polymers [i](#)

There are no such residues in this entry.