



# wwPDB X-ray Structure Validation Summary Report ⓘ

Aug 28, 2023 – 04:45 AM EDT

PDB ID : 3JVV  
Title : Crystal Structure of *P. aeruginosa* PilT with bound AMP-PCP  
Authors : Mistic, A.M.; Satyshur, K.A.; Forest, K.T.  
Deposited on : 2009-09-17  
Resolution : 2.60 Å(reported)

This is a wwPDB X-ray Structure Validation Summary Report for a publicly released PDB entry.

We welcome your comments at [validation@mail.wwpdb.org](mailto:validation@mail.wwpdb.org)

A user guide is available at

<https://www.wwpdb.org/validation/2017/XrayValidationReportHelp>

with specific help available everywhere you see the ⓘ symbol.

The types of validation reports are described at

<https://www.wwpdb.org/validation/2017/FAQs#types>.

---

The following versions of software and data (see [references ⓘ](#)) were used in the production of this report:

MolProbity : 4.02b-467  
Mogul : 1.8.5 (274361), CSD as541be (2020)  
Xtriage (Phenix) : 1.13  
EDS : 2.35  
buster-report : 1.1.7 (2018)  
Percentile statistics : 20191225.v01 (using entries in the PDB archive December 25th 2019)  
Refmac : 5.8.0158  
CCP4 : 7.0.044 (Gargrove)  
Ideal geometry (proteins) : Engh & Huber (2001)  
Ideal geometry (DNA, RNA) : Parkinson et al. (1996)  
Validation Pipeline (wwPDB-VP) : 2.35

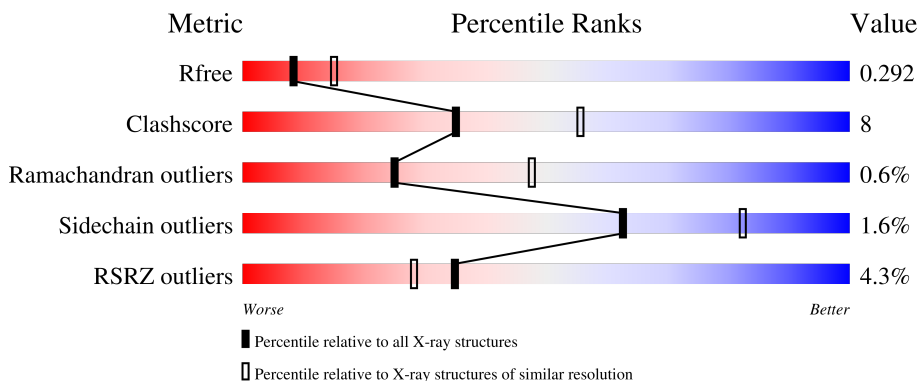
# 1 Overall quality at a glance

The following experimental techniques were used to determine the structure:

*X-RAY DIFFRACTION*

The reported resolution of this entry is 2.60 Å.

Percentile scores (ranging between 0-100) for global validation metrics of the entry are shown in the following graphic. The table shows the number of entries on which the scores are based.



Metric	Whole archive (#Entries)	Similar resolution (#Entries, resolution range(Å))
$R_{free}$	130704	3163 (2.60-2.60)
Clashscore	141614	3518 (2.60-2.60)
Ramachandran outliers	138981	3455 (2.60-2.60)
Sidechain outliers	138945	3455 (2.60-2.60)
RSRZ outliers	127900	3104 (2.60-2.60)

The table below summarises the geometric issues observed across the polymeric chains and their fit to the electron density. The red, orange, yellow and green segments of the lower bar indicate the fraction of residues that contain outliers for  $\geq 3$ , 2, 1 and 0 types of geometric quality criteria respectively. A grey segment represents the fraction of residues that are not modelled. The numeric value for each fraction is indicated below the corresponding segment, with a dot representing fractions  $\leq 5\%$ . The upper red bar (where present) indicates the fraction of residues that have poor fit to the electron density. The numeric value is given above the bar.

Mol	Chain	Length	Quality of chain
1	A	356	 5% 78% 12% • 7%
1	B	356	 5% 76% 14% • 8%
1	C	356	 2% 74% 17% • 5%

## 2 Entry composition [i](#)

There are 5 unique types of molecules in this entry. The entry contains 7939 atoms, of which 0 are hydrogens and 0 are deuteriums.

In the tables below, the ZeroOcc column contains the number of atoms modelled with zero occupancy, the AltConf column contains the number of residues with at least one atom in alternate conformation and the Trace column contains the number of residues modelled with at most 2 atoms.

- Molecule 1 is a protein called Twitching mobility protein.

Mol	Chain	Residues	Atoms					ZeroOcc	AltConf	Trace
			Total	C	N	O	S			
1	A	331	2577	1617	458	487	15	0	0	0
1	B	328	2551	1599	453	484	15	0	0	0
1	C	337	2613	1641	464	493	15	0	0	0

There are 36 discrepancies between the modelled and reference sequences:

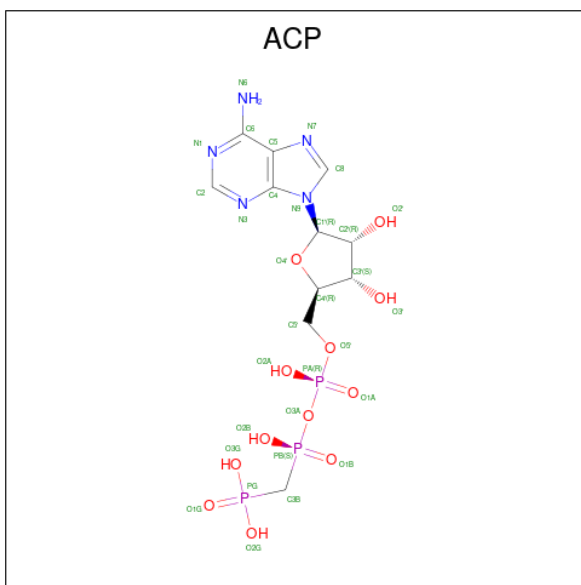
Chain	Residue	Modelled	Actual	Comment	Reference
A	345	GLY	-	expression tag	UNP P24559
A	346	ALA	-	expression tag	UNP P24559
A	347	ALA	-	expression tag	UNP P24559
A	348	ALA	-	expression tag	UNP P24559
A	349	LEU	-	expression tag	UNP P24559
A	350	GLU	-	expression tag	UNP P24559
A	351	HIS	-	expression tag	UNP P24559
A	352	HIS	-	expression tag	UNP P24559
A	353	HIS	-	expression tag	UNP P24559
A	354	HIS	-	expression tag	UNP P24559
A	355	HIS	-	expression tag	UNP P24559
A	356	HIS	-	expression tag	UNP P24559
B	345	GLY	-	expression tag	UNP P24559
B	346	ALA	-	expression tag	UNP P24559
B	347	ALA	-	expression tag	UNP P24559
B	348	ALA	-	expression tag	UNP P24559
B	349	LEU	-	expression tag	UNP P24559
B	350	GLU	-	expression tag	UNP P24559
B	351	HIS	-	expression tag	UNP P24559
B	352	HIS	-	expression tag	UNP P24559
B	353	HIS	-	expression tag	UNP P24559
B	354	HIS	-	expression tag	UNP P24559
B	355	HIS	-	expression tag	UNP P24559

*Continued on next page...*

Continued from previous page...

Chain	Residue	Modelled	Actual	Comment	Reference
B	356	HIS	-	expression tag	UNP P24559
C	345	GLY	-	expression tag	UNP P24559
C	346	ALA	-	expression tag	UNP P24559
C	347	ALA	-	expression tag	UNP P24559
C	348	ALA	-	expression tag	UNP P24559
C	349	LEU	-	expression tag	UNP P24559
C	350	GLU	-	expression tag	UNP P24559
C	351	HIS	-	expression tag	UNP P24559
C	352	HIS	-	expression tag	UNP P24559
C	353	HIS	-	expression tag	UNP P24559
C	354	HIS	-	expression tag	UNP P24559
C	355	HIS	-	expression tag	UNP P24559
C	356	HIS	-	expression tag	UNP P24559

- Molecule 2 is PHOSPHOMETHYLPHOSPHONIC ACID ADENYLATE ESTER (three-letter code: ACP) (formula:  $C_{11}H_{18}N_5O_{12}P_3$ ).

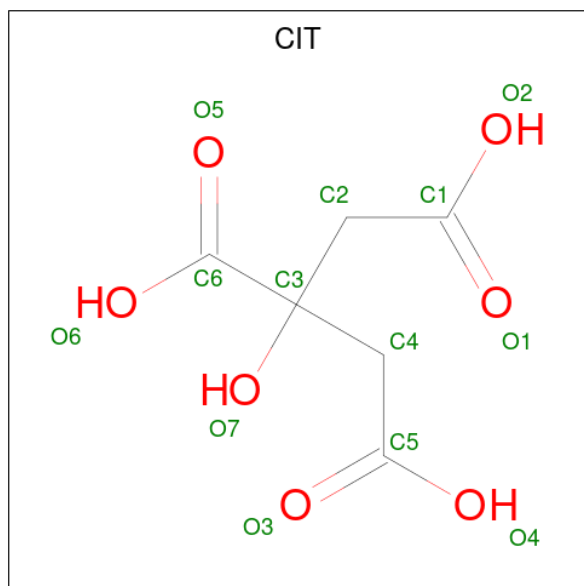


Mol	Chain	Residues	Atoms					ZeroOcc	AltConf
			Total	C	N	O	P		
2	A	1	Total	C	N	O	P	0	0
			31	11	5	12	3		
2	B	1	Total	C	N	O	P	0	0
			31	11	5	12	3		
2	C	1	Total	C	N	O	P	0	0
			31	11	5	12	3		

- Molecule 3 is MAGNESIUM ION (three-letter code: MG) (formula: Mg).

Mol	Chain	Residues	Atoms	ZeroOcc	AltConf
3	A	1	Total Mg 1 1	0	0
3	B	1	Total Mg 1 1	0	0
3	C	1	Total Mg 1 1	0	0

- Molecule 4 is CITRIC ACID (three-letter code: CIT) (formula: C<sub>6</sub>H<sub>8</sub>O<sub>7</sub>).



Mol	Chain	Residues	Atoms	ZeroOcc	AltConf
4	A	1	Total C O 13 6 7	0	0

- Molecule 5 is water.

Mol	Chain	Residues	Atoms	ZeroOcc	AltConf
5	A	32	Total O 32 32	0	0
5	B	29	Total O 29 29	0	0
5	C	28	Total O 28 28	0	0



LEU	
VAL	
ALA	
LYS	
GLY	
L328	●
I329	●
S330	●
R331	●
E332	●
N333	●
A334	●
R335	●
E336	●
K337	●
E342	●
ASN	
PHE	
GLY	
ALA	
ALA	
ALA	
LEU	
GLU	
HIS	
HIS	
HIS	
HIS	
HIS	
HIS	

## 4 Data and refinement statistics

Property	Value	Source
Space group	C 2 2 21	Depositor
Cell constants a, b, c, $\alpha$ , $\beta$ , $\gamma$	108.48Å 119.55Å 185.53Å 90.00° 90.00° 90.00°	Depositor
Resolution (Å)	29.12 – 2.60 29.12 – 2.60	Depositor EDS
% Data completeness (in resolution range)	94.2 (29.12-2.60) 94.3 (29.12-2.60)	Depositor EDS
$R_{merge}$	0.05	Depositor
$R_{sym}$	(Not available)	Depositor
$\langle I/\sigma(I) \rangle$ <sup>1</sup>	2.90 (at 2.61Å)	Xtrriage
Refinement program	REFMAC 5.4.0067	Depositor
R, $R_{free}$	0.244 , 0.291 0.247 , 0.292	Depositor DCC
$R_{free}$ test set	1759 reflections (4.98%)	wwPDB-VP
Wilson B-factor (Å <sup>2</sup> )	60.7	Xtrriage
Anisotropy	0.044	Xtrriage
Bulk solvent $k_{sol}$ (e/Å <sup>3</sup> ), $B_{sol}$ (Å <sup>2</sup> )	0.30 , 44.6	EDS
L-test for twinning <sup>2</sup>	$\langle  L  \rangle = 0.51$ , $\langle L^2 \rangle = 0.34$	Xtrriage
Estimated twinning fraction	No twinning to report.	Xtrriage
$F_o, F_c$ correlation	0.93	EDS
Total number of atoms	7939	wwPDB-VP
Average B, all atoms (Å <sup>2</sup> )	60.0	wwPDB-VP

Xtrriage's analysis on translational NCS is as follows: *The largest off-origin peak in the Patterson function is 4.59% of the height of the origin peak. No significant pseudotranslation is detected.*

<sup>1</sup>Intensities estimated from amplitudes.

<sup>2</sup>Theoretical values of  $\langle |L| \rangle$ ,  $\langle L^2 \rangle$  for acentric reflections are 0.5, 0.333 respectively for untwinned datasets, and 0.375, 0.2 for perfectly twinned datasets.



## 5 Model quality [i](#)

### 5.1 Standard geometry [i](#)

Bond lengths and bond angles in the following residue types are not validated in this section: ACP, CIT, MG

The Z score for a bond length (or angle) is the number of standard deviations the observed value is removed from the expected value. A bond length (or angle) with  $|Z| > 5$  is considered an outlier worth inspection. RMSZ is the root-mean-square of all Z scores of the bond lengths (or angles).

Mol	Chain	Bond lengths		Bond angles	
		RMSZ	# $ Z  > 5$	RMSZ	# $ Z  > 5$
1	A	0.52	1/2614 (0.0%)	0.98	26/3523 (0.7%)
1	B	0.51	0/2588	0.98	25/3490 (0.7%)
1	C	0.55	2/2651 (0.1%)	0.97	24/3574 (0.7%)
All	All	0.53	3/7853 (0.0%)	0.98	75/10587 (0.7%)

All (3) bond length outliers are listed below:

Mol	Chain	Res	Type	Atoms	Z	Observed(Å)	Ideal(Å)
1	A	1	MET	N-CA	6.41	1.59	1.46
1	C	48	HIS	CE1-NE2	6.23	1.47	1.32
1	C	48	HIS	CG-CD2	5.58	1.45	1.35

The worst 5 of 75 bond angle outliers are listed below:

Mol	Chain	Res	Type	Atoms	Z	Observed(°)	Ideal(°)
1	A	60	ARG	NE-CZ-NH1	-15.38	112.61	120.30
1	B	212	ARG	NE-CZ-NH1	-14.14	113.23	120.30
1	C	253	ARG	NE-CZ-NH1	13.91	127.25	120.30
1	C	29	ARG	NE-CZ-NH2	-13.88	113.36	120.30
1	C	253	ARG	NE-CZ-NH2	-13.87	113.37	120.30

There are no chirality outliers.

There are no planarity outliers.

### 5.2 Too-close contacts [i](#)

In the following table, the Non-H and H(model) columns list the number of non-hydrogen atoms and hydrogen atoms in the chain respectively. The H(added) column lists the number of hydrogen atoms added and optimized by MolProbity. The Clashes column lists the number of clashes within

the asymmetric unit, whereas Symm-Clashes lists symmetry-related clashes.

Mol	Chain	Non-H	H(model)	H(added)	Clashes	Symm-Clashes
1	A	2577	0	2628	37	1
1	B	2551	0	2591	43	0
1	C	2613	0	2671	57	1
2	A	31	0	14	1	0
2	B	31	0	13	0	0
2	C	31	0	14	2	0
3	A	1	0	0	0	0
3	B	1	0	0	0	0
3	C	1	0	0	0	0
4	A	13	0	5	0	0
5	A	32	0	0	4	0
5	B	29	0	0	6	0
5	C	28	0	0	6	0
All	All	7939	0	7936	129	1

The all-atom clashscore is defined as the number of clashes found per 1000 atoms (including hydrogen atoms). The all-atom clashscore for this structure is 8.

The worst 5 of 129 close contacts within the same asymmetric unit are listed below, sorted by their clash magnitude.

Atom-1	Atom-2	Interatomic distance (Å)	Clash overlap (Å)
1:A:36:ARG:NH1	5:A:366:HOH:O	2.14	0.81
1:A:321:LYS:NZ	1:A:342:GLU:OE2	2.18	0.75
1:C:321:LYS:NZ	1:C:342:GLU:OE2	2.20	0.73
1:C:65:GLU:O	5:C:363:HOH:O	2.05	0.73
1:B:194:ARG:HE	1:C:82:ARG:HH21	1.36	0.72

All (1) symmetry-related close contacts are listed below. The label for Atom-2 includes the symmetry operator and encoded unit-cell translations to be applied.

Atom-1	Atom-2	Interatomic distance (Å)	Clash overlap (Å)
1:A:306:GLN:O	1:C:60:ARG:NH2[5_545]	2.03	0.17

## 5.3 Torsion angles [i](#)

### 5.3.1 Protein backbone [i](#)

In the following table, the Percentiles column shows the percent Ramachandran outliers of the chain as a percentile score with respect to all X-ray entries followed by that with respect to entries of similar resolution.

The Analysed column shows the number of residues for which the backbone conformation was analysed, and the total number of residues.

Mol	Chain	Analysed	Favoured	Allowed	Outliers	Percentiles	
1	A	325/356 (91%)	309 (95%)	14 (4%)	2 (1%)	25	47
1	B	322/356 (90%)	307 (95%)	14 (4%)	1 (0%)	41	64
1	C	333/356 (94%)	314 (94%)	16 (5%)	3 (1%)	17	35
All	All	980/1068 (92%)	930 (95%)	44 (4%)	6 (1%)	25	47

5 of 6 Ramachandran outliers are listed below:

Mol	Chain	Res	Type
1	B	134	SER
1	A	204	GLU
1	C	204	GLU
1	C	197	PRO
1	C	203	GLY

### 5.3.2 Protein sidechains [i](#)

In the following table, the Percentiles column shows the percent sidechain outliers of the chain as a percentile score with respect to all X-ray entries followed by that with respect to entries of similar resolution.

The Analysed column shows the number of residues for which the sidechain conformation was analysed, and the total number of residues.

Mol	Chain	Analysed	Rotameric	Outliers	Percentiles	
1	A	283/299 (95%)	280 (99%)	3 (1%)	73	88
1	B	280/299 (94%)	277 (99%)	3 (1%)	73	88
1	C	286/299 (96%)	278 (97%)	8 (3%)	43	69
All	All	849/897 (95%)	835 (98%)	14 (2%)	62	82

5 of 14 residues with a non-rotameric sidechain are listed below:

Mol	Chain	Res	Type
1	C	35	ARG
1	C	52	TYR
1	C	239	ARG
1	C	137	SER
1	C	207	ASP

Sometimes sidechains can be flipped to improve hydrogen bonding and reduce clashes. There are no such sidechains identified.

### 5.3.3 RNA [i](#)

There are no RNA molecules in this entry.

## 5.4 Non-standard residues in protein, DNA, RNA chains [i](#)

There are no non-standard protein/DNA/RNA residues in this entry.

## 5.5 Carbohydrates [i](#)

There are no monosaccharides in this entry.

## 5.6 Ligand geometry [i](#)

Of 7 ligands modelled in this entry, 3 are monoatomic - leaving 4 for Mogul analysis.

In the following table, the Counts columns list the number of bonds (or angles) for which Mogul statistics could be retrieved, the number of bonds (or angles) that are observed in the model and the number of bonds (or angles) that are defined in the Chemical Component Dictionary. The Link column lists molecule types, if any, to which the group is linked. The Z score for a bond length (or angle) is the number of standard deviations the observed value is removed from the expected value. A bond length (or angle) with  $|Z| > 2$  is considered an outlier worth inspection. RMSZ is the root-mean-square of all Z scores of the bond lengths (or angles).

Mol	Type	Chain	Res	Link	Bond lengths			Bond angles		
					Counts	RMSZ	# Z  > 2	Counts	RMSZ	# Z  > 2
2	ACP	B	400	3	27,33,33	1.10	2 (7%)	32,52,52	1.61	7 (21%)
2	ACP	A	400	3	27,33,33	1.15	3 (11%)	32,52,52	1.72	6 (18%)
4	CIT	A	357	-	12,12,12	1.13	0	17,17,17	1.71	3 (17%)
2	ACP	C	400	3	27,33,33	1.26	3 (11%)	32,52,52	1.37	6 (18%)

In the following table, the Chirals column lists the number of chiral outliers, the number of chiral centers analysed, the number of these observed in the model and the number defined in the Chemical Component Dictionary. Similar counts are reported in the Torsion and Rings columns. '-' means no outliers of that kind were identified.

Mol	Type	Chain	Res	Link	Chirals	Torsions	Rings
2	ACP	B	400	3	-	2/15/38/38	0/3/3/3
2	ACP	A	400	3	-	0/15/38/38	0/3/3/3
4	CIT	A	357	-	-	3/16/16/16	-
2	ACP	C	400	3	-	3/15/38/38	0/3/3/3

The worst 5 of 8 bond length outliers are listed below:

Mol	Chain	Res	Type	Atoms	Z	Observed(Å)	Ideal(Å)
2	C	400	ACP	PB-O3A	3.49	1.62	1.58
2	A	400	ACP	PB-O3A	2.94	1.61	1.58
2	C	400	ACP	C5-C4	2.62	1.47	1.40
2	A	400	ACP	C5-C4	2.58	1.47	1.40
2	B	400	ACP	C5-C4	2.44	1.47	1.40

The worst 5 of 22 bond angle outliers are listed below:

Mol	Chain	Res	Type	Atoms	Z	Observed(°)	Ideal(°)
2	A	400	ACP	PB-O3A-PA	-5.54	115.00	132.56
2	B	400	ACP	PB-O3A-PA	-5.09	116.41	132.56
4	A	357	CIT	O6-C6-C3	3.75	119.57	113.05
2	B	400	ACP	N3-C2-N1	-3.29	123.53	128.68
4	A	357	CIT	O7-C3-C6	3.23	113.40	108.86

There are no chirality outliers.

5 of 8 torsion outliers are listed below:

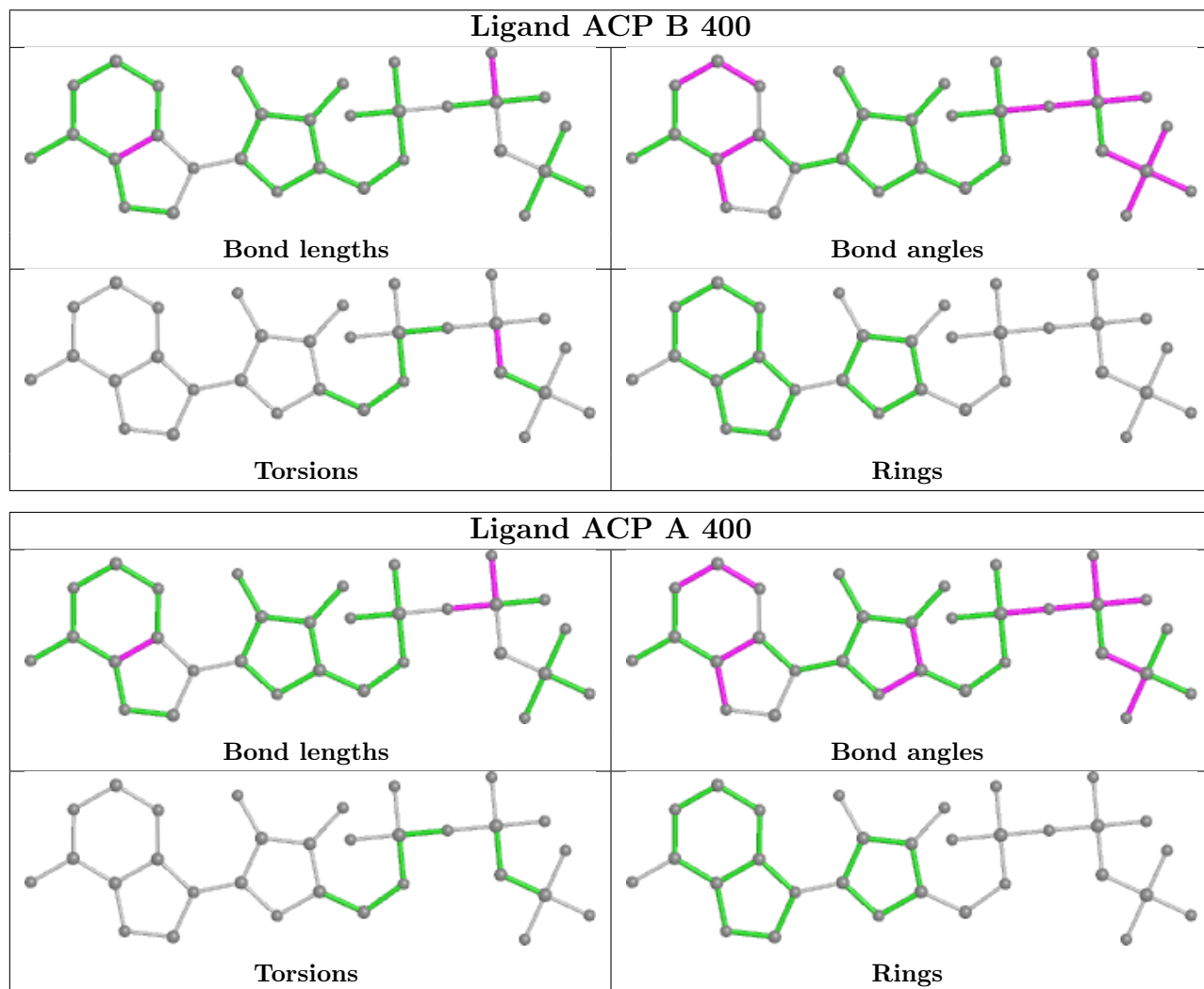
Mol	Chain	Res	Type	Atoms
2	B	400	ACP	PG-C3B-PB-O1B
2	B	400	ACP	PG-C3B-PB-O3A
2	C	400	ACP	PG-C3B-PB-O1B
2	C	400	ACP	PG-C3B-PB-O3A
4	A	357	CIT	C2-C3-C4-C5

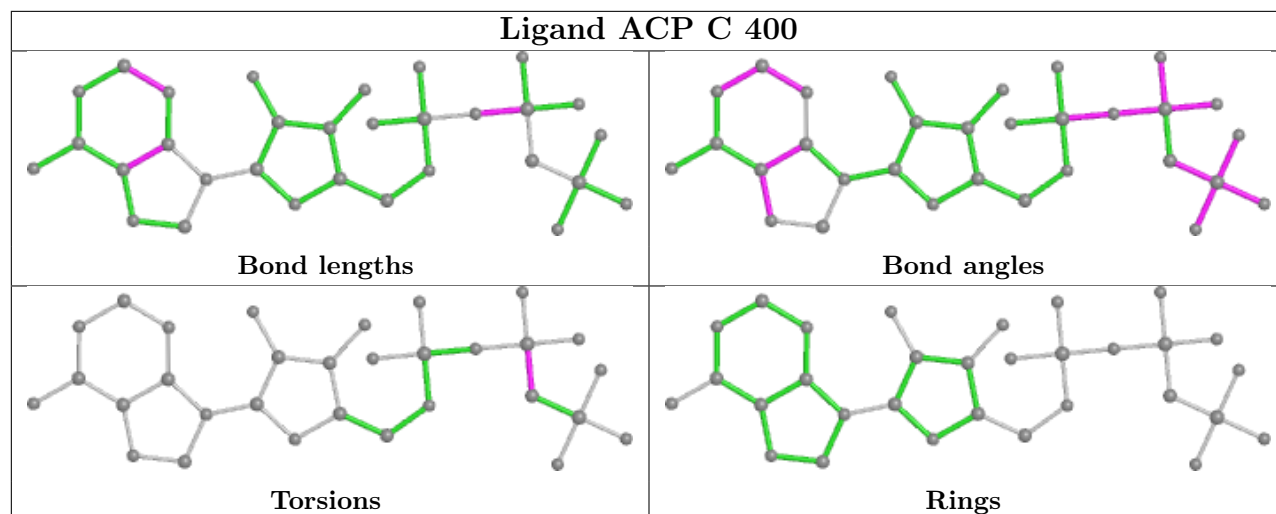
There are no ring outliers.

2 monomers are involved in 3 short contacts:

Mol	Chain	Res	Type	Clashes	Symm-Clashes
2	A	400	ACP	1	0
2	C	400	ACP	2	0

The following is a two-dimensional graphical depiction of Mogul quality analysis of bond lengths, bond angles, torsion angles, and ring geometry for all instances of the Ligand of Interest. In addition, ligands with molecular weight > 250 and outliers as shown on the validation Tables will also be included. For torsion angles, if less than 5% of the Mogul distribution of torsion angles is within 10 degrees of the torsion angle in question, then that torsion angle is considered an outlier. Any bond that is central to one or more torsion angles identified as an outlier by Mogul will be highlighted in the graph. For rings, the root-mean-square deviation (RMSD) between the ring in question and similar rings identified by Mogul is calculated over all ring torsion angles. If the average RMSD is greater than 60 degrees and the minimal RMSD between the ring in question and any Mogul-identified rings is also greater than 60 degrees, then that ring is considered an outlier. The outliers are highlighted in purple. The color gray indicates Mogul did not find sufficient equivalents in the CSD to analyse the geometry.





## 5.7 Other polymers [i](#)

There are no such residues in this entry.

## 5.8 Polymer linkage issues [i](#)

There are no chain breaks in this entry.

## 6 Fit of model and data [i](#)

### 6.1 Protein, DNA and RNA chains [i](#)

In the following table, the column labelled ‘#RSRZ > 2’ contains the number (and percentage) of RSRZ outliers, followed by percent RSRZ outliers for the chain as percentile scores relative to all X-ray entries and entries of similar resolution. The OWAB column contains the minimum, median, 95<sup>th</sup> percentile and maximum values of the occupancy-weighted average B-factor per residue. The column labelled ‘Q < 0.9’ lists the number of (and percentage) of residues with an average occupancy less than 0.9.

Mol	Chain	Analysed	<RSRZ>	#RSRZ>2	OWAB(Å <sup>2</sup> )	Q<0.9
1	A	331/356 (92%)	0.17	18 (5%) 25 20	38, 58, 89, 118	0
1	B	328/356 (92%)	0.17	18 (5%) 25 19	34, 57, 94, 121	0
1	C	337/356 (94%)	0.06	7 (2%) 63 58	35, 58, 86, 101	0
All	All	996/1068 (93%)	0.13	43 (4%) 35 28	34, 58, 89, 121	0

The worst 5 of 43 RSRZ outliers are listed below:

Mol	Chain	Res	Type	RSRZ
1	A	330	SER	7.1
1	B	321	LYS	7.0
1	A	333	ASN	5.8
1	B	331	ARG	5.5
1	B	332	GLU	4.8

### 6.2 Non-standard residues in protein, DNA, RNA chains [i](#)

There are no non-standard protein/DNA/RNA residues in this entry.

### 6.3 Carbohydrates [i](#)

There are no monosaccharides in this entry.

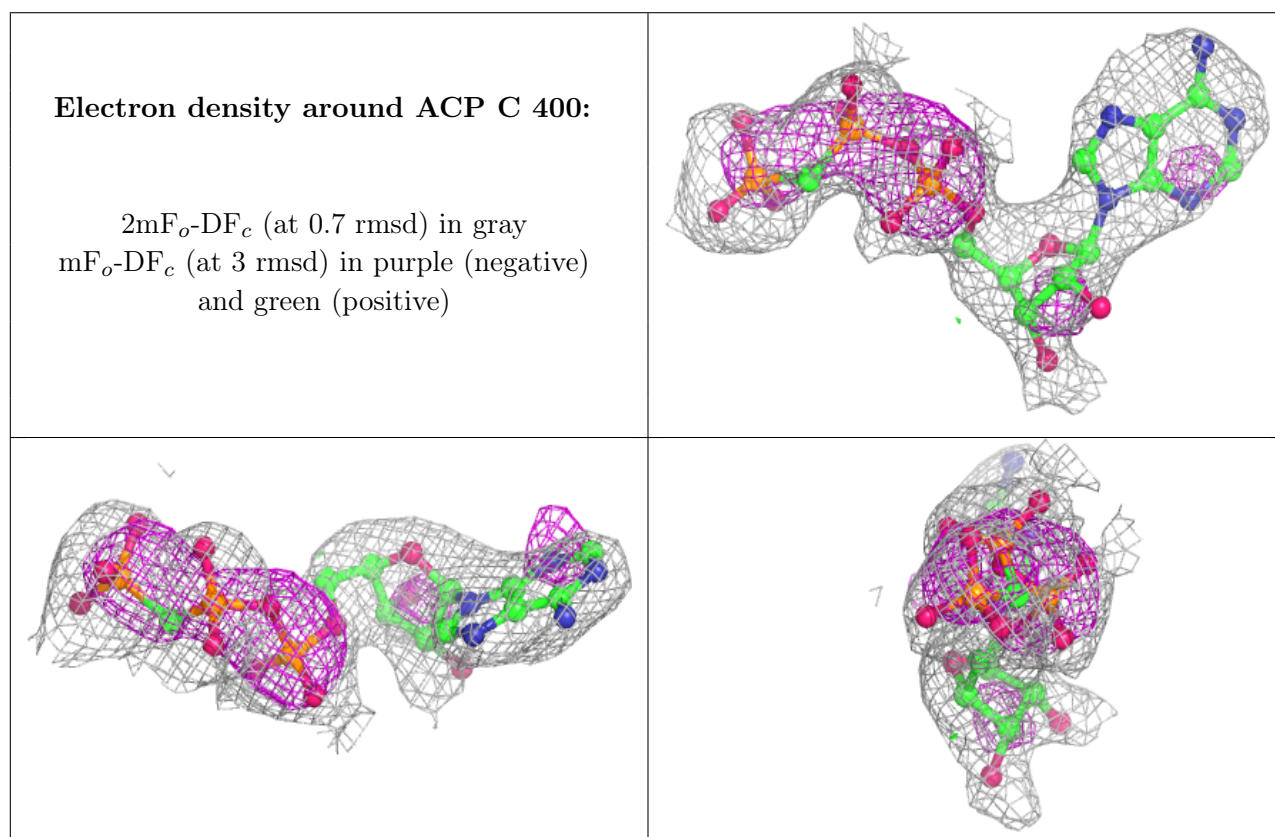
### 6.4 Ligands [i](#)

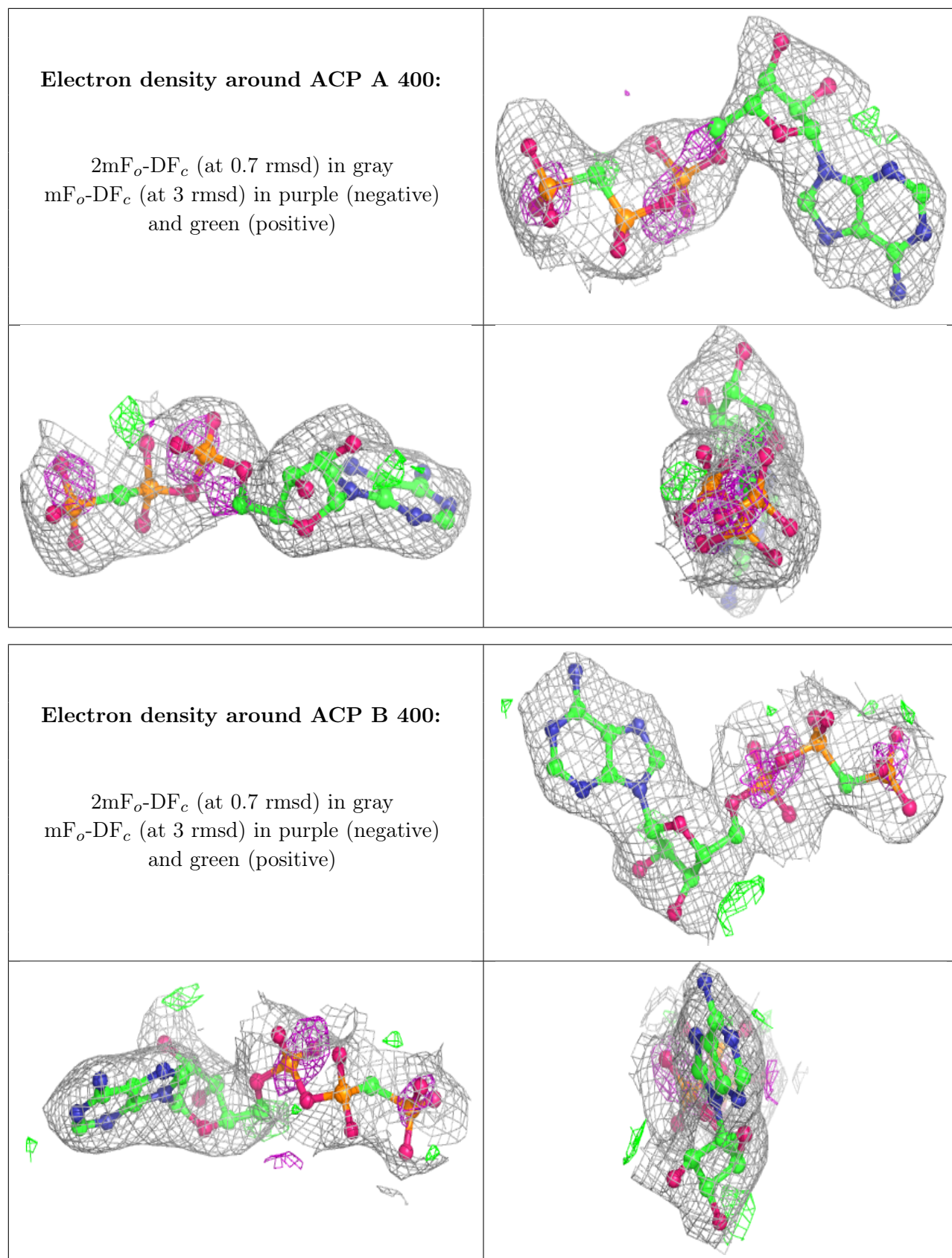
In the following table, the Atoms column lists the number of modelled atoms in the group and the number defined in the chemical component dictionary. The B-factors column lists the minimum, median, 95<sup>th</sup> percentile and maximum values of B factors of atoms in the group. The column labelled ‘Q < 0.9’ lists the number of atoms with occupancy less than 0.9.



Mol	Type	Chain	Res	Atoms	RSCC	RSR	B-factors( $\text{\AA}^2$ )	Q<0.9
3	MG	C	401	1/1	0.68	0.23	64,64,64,64	0
3	MG	A	401	1/1	0.84	0.16	55,55,55,55	0
2	ACP	C	400	31/31	0.89	0.27	68,71,71,72	0
4	CIT	A	357	13/13	0.91	0.14	53,54,58,58	0
2	ACP	A	400	31/31	0.93	0.16	67,72,73,73	0
2	ACP	B	400	31/31	0.94	0.13	58,62,63,63	0
3	MG	B	401	1/1	0.97	0.12	44,44,44,44	0

The following is a graphical depiction of the model fit to experimental electron density of all instances of the Ligand of Interest. In addition, ligands with molecular weight > 250 and outliers as shown on the geometry validation Tables will also be included. Each fit is shown from different orientation to approximate a three-dimensional view.





## 6.5 Other polymers

There are no such residues in this entry.