



Full wwPDB X-ray Structure Validation Report ⓘ

May 24, 2020 – 04:54 am BST

PDB ID : 3INV
Title : Trypanosoma cruzi Dihydrofolate Reductase-Thymidylate Synthase COM-
PLEXED WITH NADPH, dUMP AND C-448 ANTIFOLATE
Authors : Chitnumsub, P.; Yuvaniyama, J.; Yuthavong, Y.
Deposited on : 2009-08-13
Resolution : 2.37 Å(reported)

This is a Full wwPDB X-ray Structure Validation Report for a publicly released PDB entry.

We welcome your comments at validation@mail.wwpdb.org

A user guide is available at

<https://www.wwpdb.org/validation/2017/XrayValidationReportHelp>

with specific help available everywhere you see the ⓘ symbol.

The following versions of software and data (see [references ⓘ](#)) were used in the production of this report:

MolProbity : 4.02b-467
Mogul : 1.8.5 (274361), CSD as541be (2020)
Xtriage (Phenix) : 1.13
EDS : 2.11
buster-report : 1.1.7 (2018)
Percentile statistics : 20191225.v01 (using entries in the PDB archive December 25th 2019)
Refmac : 5.8.0158
CCP4 : 7.0.044 (Gargrove)
Ideal geometry (proteins) : Engh & Huber (2001)
Ideal geometry (DNA, RNA) : Parkinson et al. (1996)
Validation Pipeline (wwPDB-VP) : 2.11

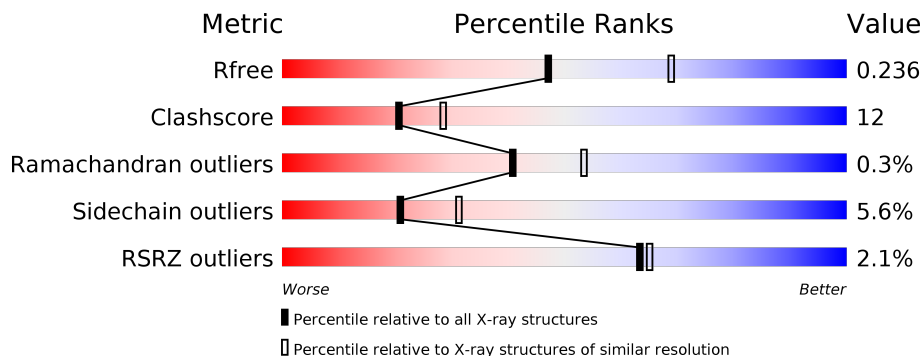
1 Overall quality at a glance

The following experimental techniques were used to determine the structure:

X-RAY DIFFRACTION


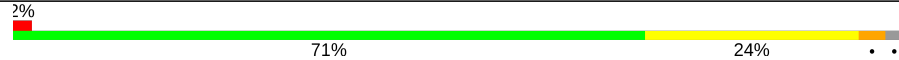
The reported resolution of this entry is 2.37 Å.

Percentile scores (ranging between 0-100) for global validation metrics of the entry are shown in the following graphic. The table shows the number of entries on which the scores are based.



Metric	Whole archive (#Entries)	Similar resolution (#Entries, resolution range(Å))
R_{free}	130704	5509 (2.40-2.36)
Clashscore	141614	6082 (2.40-2.36)
Ramachandran outliers	138981	5973 (2.40-2.36)
Sidechain outliers	138945	5975 (2.40-2.36)
RSRZ outliers	127900	5397 (2.40-2.36)

The table below summarises the geometric issues observed across the polymeric chains and their fit to the electron density. The red, orange, yellow and green segments on the lower bar indicate the fraction of residues that contain outliers for ≥ 3 , 2, 1 and 0 types of geometric quality criteria respectively. A grey segment represents the fraction of residues that are not modelled. The numeric value for each fraction is indicated below the corresponding segment, with a dot representing fractions $\leq 5\%$. The upper red bar (where present) indicates the fraction of residues that have poor fit to the electron density. The numeric value is given above the bar.

Mol	Chain	Length	Quality of chain
1	A	521	
1	B	521	

2 Entry composition [i](#)

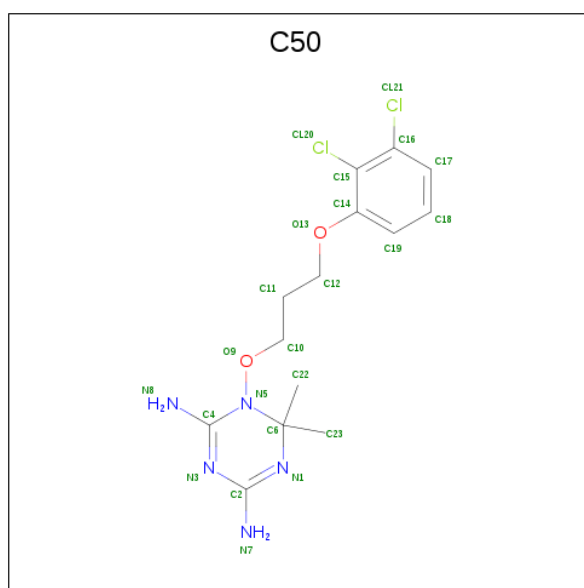
There are 6 unique types of molecules in this entry. The entry contains 8707 atoms, of which 0 are hydrogens and 0 are deuteriums.

In the tables below, the ZeroOcc column contains the number of atoms modelled with zero occupancy, the AltConf column contains the number of residues with at least one atom in alternate conformation and the Trace column contains the number of residues modelled with at most 2 atoms.

- Molecule 1 is a protein called Bifunctional dihydrofolate reductase-thymidylate synthase.

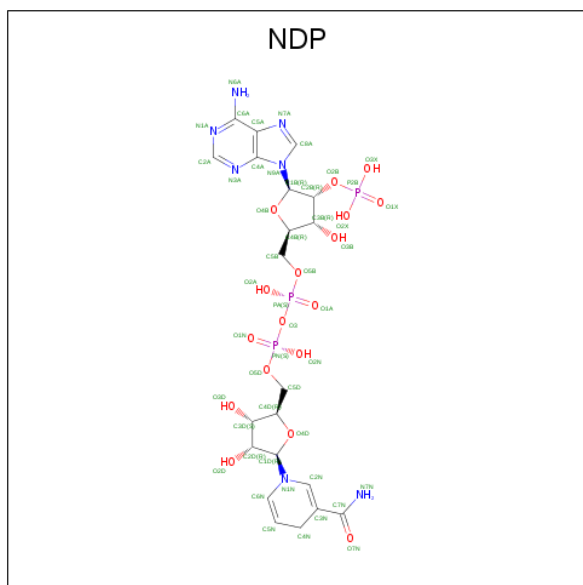
Mol	Chain	Residues	Atoms					ZeroOcc	AltConf	Trace
			Total	C	N	O	S			
1	A	514	Total	C	N	O	S	0	0	0
			4093	2597	724	754	18			
1	B	513	Total	C	N	O	S	0	0	0
			4087	2594	723	752	18			

- Molecule 2 is 1-[3-(2,3-dichlorophenoxy)propoxy]-6,6-dimethyl-1,6-dihydro-1,3,5-triazine-2,4-diamine (three-letter code: C50) (formula: $C_{14}H_{19}Cl_2N_5O_2$).



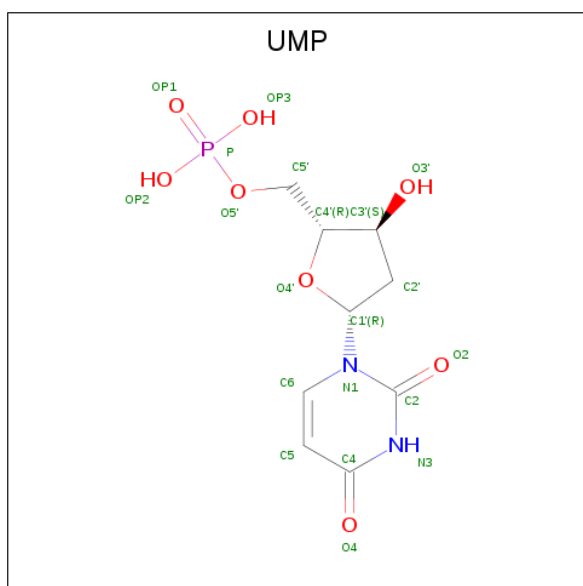
Mol	Chain	Residues	Atoms					ZeroOcc	AltConf
			Total	C	Cl	N	O		
2	A	1	Total	C	Cl	N	O	0	0
			23	14	2	5	2		
2	B	1	Total	C	Cl	N	O	0	0
			23	14	2	5	2		

- Molecule 3 is NADPH DIHYDRO-NICOTINAMIDE-ADENINE-DINUCLEOTIDE PHOSPHATE (three-letter code: NDP) (formula: $C_{21}H_{30}N_7O_{17}P_3$).



Mol	Chain	Residues	Atoms				ZeroOcc	AltConf	
			Total	C	N	O			P
3	A	1	48	21	7	17	3	0	0
3	B	1	48	21	7	17	3	0	0

- Molecule 4 is 2'-DEOXYURIDINE 5'-MONOPHOSPHATE (three-letter code: UMP) (formula: C₉H₁₃N₂O₈P).



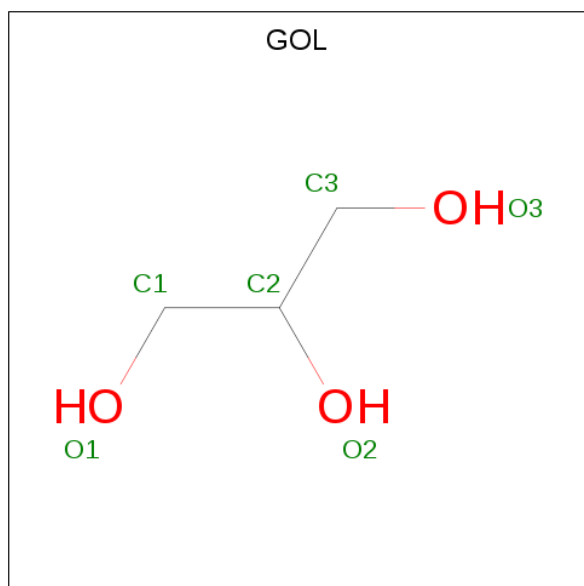
Mol	Chain	Residues	Atoms				ZeroOcc	AltConf	
			Total	C	N	O			P
4	A	1	20	9	2	8	1	0	0

Continued on next page...

Continued from previous page...

Mol	Chain	Residues	Atoms					ZeroOcc	AltConf
			Total	C	N	O	P		
4	B	1	20	9	2	8	1	0	0

- Molecule 5 is GLYCEROL (three-letter code: GOL) (formula: C₃H₈O₃).



Mol	Chain	Residues	Atoms			ZeroOcc	AltConf
			Total	C	O		
5	A	1	6	3	3	0	0
5	A	1	6	3	3	0	0
5	B	1	6	3	3	0	0
5	B	1	6	3	3	0	0
5	B	1	6	3	3	0	0

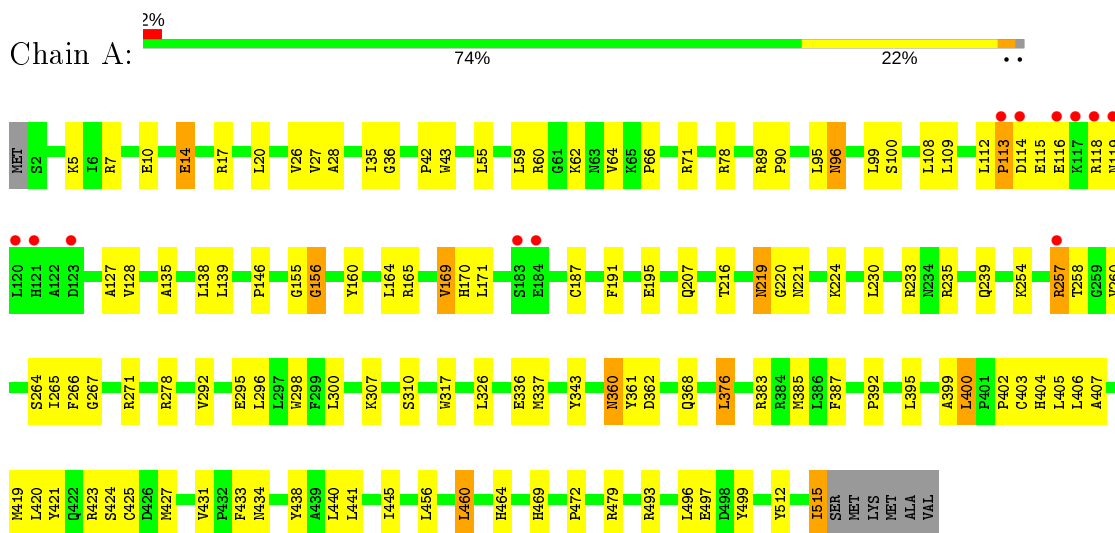
- Molecule 6 is water.

Mol	Chain	Residues	Atoms		ZeroOcc	AltConf
			Total	O		
6	A	188	188	188	0	0
6	B	127	127	127	0	0

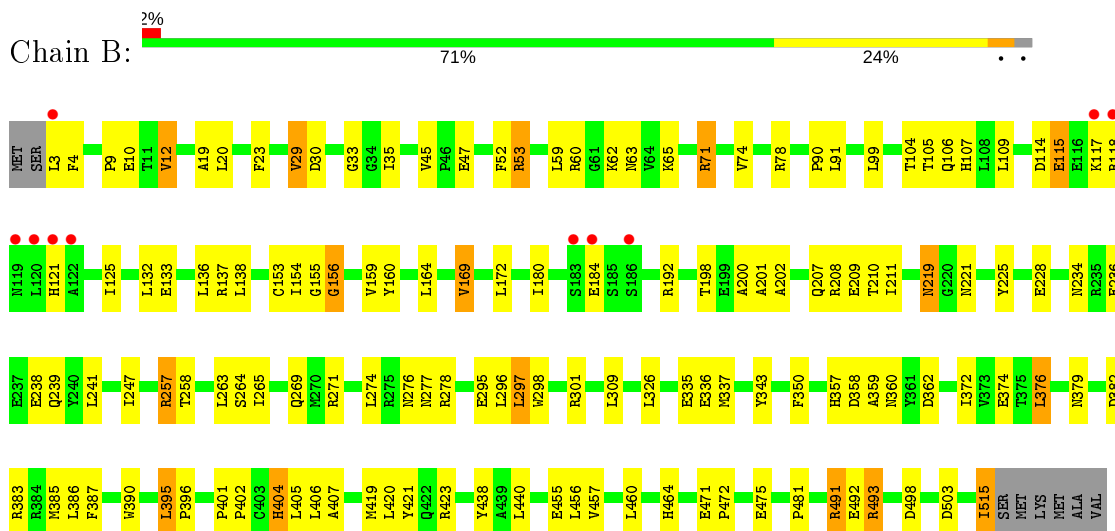
3 Residue-property plots i

These plots are drawn for all protein, RNA and DNA chains in the entry. The first graphic for a chain summarises the proportions of the various outlier classes displayed in the second graphic. The second graphic shows the sequence view annotated by issues in geometry and electron density. Residues are color-coded according to the number of geometric quality criteria for which they contain at least one outlier: green = 0, yellow = 1, orange = 2 and red = 3 or more. A red dot above a residue indicates a poor fit to the electron density ($RSRZ > 2$). Stretches of 2 or more consecutive residues without any outlier are shown as a green connector. Residues present in the sample, but not in the model, are shown in grey.

- Molecule 1: Bifunctional dihydrofolate reductase-thymidylate synthase



- Molecule 1: Bifunctional dihydrofolate reductase-thymidylate synthase



4 Data and refinement statistics

Property	Value	Source
Space group	C 2 2 21	Depositor
Cell constants a, b, c, α , β , γ	93.88Å 136.90Å 167.82Å 90.00° 90.00° 90.00°	Depositor
Resolution (Å)	46.94 – 2.37 46.94 – 2.37	Depositor EDS
% Data completeness (in resolution range)	91.5 (46.94-2.37) 91.5 (46.94-2.37)	Depositor EDS
R_{merge}	0.06	Depositor
R_{sym}	(Not available)	Depositor
$\langle I/\sigma(I) \rangle$ ¹	6.49 (at 2.37Å)	Xtrriage
Refinement program	CNS 1.2	Depositor
R, R_{free}	0.189 , 0.243 0.184 , 0.236	Depositor DCC
R_{free} test set	2036 reflections (5.04%)	wwPDB-VP
Wilson B-factor (Å ²)	26.7	Xtrriage
Anisotropy	0.454	Xtrriage
Bulk solvent k_{sol} (e/Å ³), B_{sol} (Å ²)	0.32 , 35.7	EDS
L-test for twinning ²	$\langle L \rangle = 0.50$, $\langle L^2 \rangle = 0.33$	Xtrriage
Estimated twinning fraction	No twinning to report.	Xtrriage
F_o, F_c correlation	0.94	EDS
Total number of atoms	8707	wwPDB-VP
Average B, all atoms (Å ²)	30.0	wwPDB-VP

Xtrriage's analysis on translational NCS is as follows: *The largest off-origin peak in the Patterson function is 3.33% of the height of the origin peak. No significant pseudotranslation is detected.*

¹Intensities estimated from amplitudes.

²Theoretical values of $\langle |L| \rangle$, $\langle L^2 \rangle$ for acentric reflections are 0.5, 0.333 respectively for untwinned datasets, and 0.375, 0.2 for perfectly twinned datasets.

5 Model quality [i](#)

5.1 Standard geometry [i](#)

Bond lengths and bond angles in the following residue types are not validated in this section: GOL, C50, UMP, NDP

The Z score for a bond length (or angle) is the number of standard deviations the observed value is removed from the expected value. A bond length (or angle) with $|Z| > 5$ is considered an outlier worth inspection. RMSZ is the root-mean-square of all Z scores of the bond lengths (or angles).

Mol	Chain	Bond lengths		Bond angles	
		RMSZ	# Z >5	RMSZ	# Z >5
1	A	0.36	0/4193	0.64	1/5690 (0.0%)
1	B	0.35	0/4187	0.64	3/5682 (0.1%)
All	All	0.36	0/8380	0.64	4/11372 (0.0%)

There are no bond length outliers.

All (4) bond angle outliers are listed below:

Mol	Chain	Res	Type	Atoms	Z	Observed(°)	Ideal(°)
1	B	404	HIS	N-CA-C	-5.83	95.27	111.00
1	B	359	ALA	N-CA-C	-5.57	95.97	111.00
1	A	156	GLY	N-CA-C	-5.54	99.25	113.10
1	B	156	GLY	N-CA-C	-5.10	100.35	113.10

There are no chirality outliers.

There are no planarity outliers.

5.2 Too-close contacts [i](#)

In the following table, the Non-H and H(model) columns list the number of non-hydrogen atoms and hydrogen atoms in the chain respectively. The H(added) column lists the number of hydrogen atoms added and optimized by MolProbity. The Clashes column lists the number of clashes within the asymmetric unit, whereas Symm-Clashes lists symmetry related clashes.

Mol	Chain	Non-H	H(model)	H(added)	Clashes	Symm-Clashes
1	A	4093	0	4046	98	0
1	B	4087	0	4041	113	0
2	A	23	0	19	0	0
2	B	23	0	19	1	0
3	A	48	0	26	4	0

Continued on next page...

Continued from previous page...

Mol	Chain	Non-H	H(model)	H(added)	Clashes	Symm-Clashes
3	B	48	0	26	4	0
4	A	20	0	11	1	0
4	B	20	0	11	0	0
5	A	12	0	16	2	0
5	B	18	0	24	2	0
6	A	188	0	0	5	0
6	B	127	0	0	6	0
All	All	8707	0	8239	205	0

The all-atom clashscore is defined as the number of clashes found per 1000 atoms (including hydrogen atoms). The all-atom clashscore for this structure is 12.

All (205) close contacts within the same asymmetric unit are listed below, sorted by their clash magnitude.

Atom-1	Atom-2	Interatomic distance (Å)	Clash overlap (Å)
1:B:257:ARG:H	1:B:257:ARG:HD3	1.28	0.96
1:A:239:GLN:HE22	1:A:271:ARG:H	1.12	0.93
1:A:257:ARG:HH11	1:A:257:ARG:HB2	1.35	0.90
1:A:434:ASN:HD21	4:A:603:UMP:HN3	1.22	0.83
1:B:471:GLU:HB3	1:B:472:PRO:HD3	1.63	0.80
1:B:198:THR:HG22	1:B:200:ALA:H	1.46	0.79
1:B:395:LEU:HD11	1:B:401:PRO:HB3	1.64	0.79
1:B:208:ARG:NH1	1:B:211:ILE:HD12	2.00	0.76
1:A:376:LEU:HD13	1:A:385:MET:SD	2.25	0.76
1:A:266:PHE:O	1:B:271:ARG:NH2	2.19	0.74
1:B:457:VAL:HG13	6:B:1031:HOH:O	1.87	0.73
1:B:117:LYS:HG2	1:B:121:HIS:NE2	2.04	0.72
1:B:257:ARG:N	1:B:257:ARG:HD3	2.05	0.72
1:B:376:LEU:HD13	1:B:385:MET:SD	2.30	0.71
1:B:374:GLU:HG2	6:B:1159:HOH:O	1.91	0.71
1:B:395:LEU:CD1	1:B:401:PRO:HB3	2.23	0.68
1:B:53:ARG:HH22	1:B:91:LEU:HD22	1.60	0.66
1:A:164:LEU:HA	1:A:169:VAL:HG13	1.79	0.65
1:B:45:VAL:HG21	1:B:180:ILE:HD12	1.77	0.65
1:A:219:ASN:ND2	1:A:221:ASN:H	1.95	0.65
1:B:3:LEU:HG	1:B:4:PHE:CD1	2.33	0.63
1:B:257:ARG:H	1:B:257:ARG:CD	2.10	0.63
1:A:295:GLU:OE2	5:A:705:GOL:H32	1.99	0.63
1:A:20:LEU:HB2	1:A:171:LEU:HD21	1.81	0.63
1:B:117:LYS:HE2	1:B:121:HIS:NE2	2.13	0.63
1:A:404:HIS:HB2	1:A:420:LEU:HD11	1.80	0.62

Continued on next page...

Continued from previous page...

Atom-1	Atom-2	Interatomic distance (Å)	Clash overlap (Å)
1:B:295:GLU:OE2	5:B:704:GOL:H2	1.99	0.62
1:B:117:LYS:HG2	1:B:121:HIS:CD2	2.35	0.61
1:B:9:PRO:O	1:B:12:VAL:HG22	2.00	0.61
1:B:104:THR:HG22	1:B:105:THR:N	2.16	0.60
1:B:90:PRO:HB3	1:B:125:ILE:HD11	1.82	0.60
1:A:233:ARG:CZ	1:A:235:ARG:NH1	2.64	0.60
1:A:165:ARG:C	1:A:169:VAL:HG22	2.23	0.59
1:B:35:ILE:O	3:B:602:NDP:H2N	2.03	0.59
1:A:155:GLY:HA3	3:A:602:NDP:H5N	1.84	0.58
1:A:239:GLN:NE2	1:A:271:ARG:H	1.94	0.58
1:A:155:GLY:HA2	1:A:160:TYR:CZ	2.38	0.58
1:A:424:SER:OG	1:B:383:ARG:HD3	2.04	0.58
1:B:53:ARG:NH2	1:B:91:LEU:HD22	2.17	0.58
1:B:219:ASN:ND2	1:B:221:ASN:H	2.01	0.58
1:B:404:HIS:HB2	1:B:420:LEU:HD11	1.85	0.58
1:B:153:CYS:SG	1:B:159:VAL:HG12	2.44	0.57
1:B:257:ARG:H	1:B:257:ARG:HH11	1.51	0.57
1:A:115:GLU:HA	1:A:118:ARG:NH1	2.20	0.57
1:B:335:GLU:OE1	1:B:357:HIS:HE1	1.87	0.57
1:B:208:ARG:NH1	1:B:228:GLU:OE1	2.38	0.57
1:B:515:ILE:C	1:B:515:ILE:HD13	2.25	0.56
1:A:59:LEU:HD21	1:A:71:ARG:HA	1.86	0.56
1:A:404:HIS:NE2	5:A:705:GOL:H12	2.19	0.56
1:B:74:VAL:HG11	1:B:154:ILE:HD13	1.86	0.56
1:A:360:ASN:ND2	1:A:362:ASP:H	2.04	0.56
1:A:216:THR:OG1	1:A:224:LYS:HE2	2.06	0.56
1:A:254:LYS:NZ	6:A:1016:HOH:O	2.39	0.56
1:A:60:ARG:NH2	6:A:1121:HOH:O	2.38	0.56
1:B:257:ARG:N	1:B:257:ARG:HH11	2.03	0.56
1:B:395:LEU:HD11	1:B:401:PRO:CB	2.36	0.55
1:B:271:ARG:HG3	5:B:702:GOL:H2	1.88	0.55
1:B:104:THR:CG2	1:B:105:THR:N	2.69	0.55
1:B:419:MET:HA	1:B:457:VAL:O	2.07	0.55
1:B:155:GLY:HA2	1:B:160:TYR:CZ	2.41	0.55
1:B:164:LEU:HA	1:B:169:VAL:CG1	2.37	0.54
1:A:115:GLU:HG2	1:A:119:ASN:HD22	1.72	0.54
1:B:164:LEU:C	1:B:169:VAL:HG13	2.28	0.54
1:A:400:LEU:N	1:A:400:LEU:HD23	2.22	0.54
1:A:42:PRO:HG2	1:A:43:TRP:CE3	2.42	0.54
1:B:405:LEU:HD12	1:B:406:LEU:HB2	1.90	0.54
1:A:360:ASN:HD21	1:A:362:ASP:CG	2.11	0.53

Continued on next page...

Continued from previous page...

Atom-1	Atom-2	Interatomic distance (Å)	Clash overlap (Å)
1:B:208:ARG:HH12	1:B:211:ILE:HD12	1.70	0.53
1:A:402:PRO:HG3	6:A:1177:HOH:O	2.09	0.53
1:B:295:GLU:O	1:B:298:TRP:HB3	2.09	0.53
1:A:257:ARG:HH11	1:A:257:ARG:CB	2.15	0.53
1:A:360:ASN:HD22	1:A:361:TYR:N	2.07	0.53
1:B:357:HIS:HD2	1:B:358:ASP:OD2	1.91	0.53
1:B:493:ARG:HG2	1:B:498:ASP:HB2	1.89	0.52
1:B:164:LEU:HA	1:B:169:VAL:HG13	1.90	0.52
1:A:14:GLU:HG3	1:A:17:ARG:NH1	2.24	0.52
1:A:164:LEU:CA	1:A:169:VAL:HG13	2.39	0.52
1:A:26:VAL:HG11	1:A:55:LEU:HD23	1.92	0.52
1:A:115:GLU:HB2	1:A:118:ARG:HH12	1.74	0.51
1:B:10:GLU:OE1	1:B:10:GLU:HA	2.10	0.51
1:B:241:LEU:HD11	1:B:481:PRO:HG3	1.91	0.51
1:A:115:GLU:CG	1:A:119:ASN:HD22	2.24	0.51
1:B:104:THR:H	1:B:107:HIS:HB2	1.76	0.51
1:B:59:LEU:HD21	1:B:71:ARG:HA	1.92	0.51
1:B:114:ASP:O	1:B:118:ARG:HG3	2.11	0.51
1:B:271:ARG:HG2	6:B:1031:HOH:O	2.11	0.51
1:A:164:LEU:C	1:A:169:VAL:HG13	2.30	0.51
1:A:71:ARG:HG3	1:A:71:ARG:HH11	1.75	0.51
1:A:479:ARG:HD3	1:A:512:TYR:CG	2.46	0.50
1:A:164:LEU:HA	1:A:169:VAL:CG1	2.41	0.50
1:A:336:GLU:O	1:A:337:MET:HB2	2.12	0.50
1:B:234:ASN:O	1:B:238:GLU:HG3	2.11	0.50
1:B:420:LEU:HD22	1:B:438:TYR:CD2	2.46	0.50
1:B:201:ALA:O	1:B:202:ALA:HB3	2.12	0.50
1:A:14:GLU:CD	1:A:17:ARG:HH12	2.16	0.49
1:A:112:LEU:HB3	1:A:113:PRO:HD2	1.94	0.49
1:A:258:THR:HB	1:A:260:VAL:HG23	1.95	0.49
1:B:115:GLU:C	1:B:117:LYS:H	2.14	0.49
1:A:219:ASN:HD22	1:A:220:GLY:N	2.11	0.49
1:A:441:LEU:O	1:A:445:ILE:HG12	2.13	0.49
1:A:233:ARG:NH1	1:A:235:ARG:NH2	2.60	0.49
1:A:296:LEU:HD13	1:A:296:LEU:C	2.33	0.49
1:A:399:ALA:HB3	1:A:400:LEU:HD23	1.94	0.49
1:A:405:LEU:HD12	1:A:406:LEU:HB2	1.95	0.48
1:B:74:VAL:HG13	1:B:154:ILE:CG2	2.43	0.48
1:A:292:VAL:HA	1:A:433:PHE:CZ	2.49	0.48
1:B:156:GLY:HA3	3:B:602:NDP:O1A	2.13	0.48
1:B:491:ARG:HG2	1:B:492:GLU:N	2.28	0.48

Continued on next page...

Continued from previous page...

Atom-1	Atom-2	Interatomic distance (Å)	Clash overlap (Å)
1:B:60:ARG:NH2	6:B:1024:HOH:O	2.47	0.48
1:A:96:ASN:HD22	1:A:96:ASN:N	2.11	0.48
1:B:164:LEU:CA	1:B:169:VAL:HG13	2.43	0.48
1:A:317:TRP:HZ3	1:A:400:LEU:HD21	1.79	0.48
1:A:278:ARG:HG2	6:A:1095:HOH:O	2.13	0.48
1:A:424:SER:HG	1:B:383:ARG:HD3	1.79	0.48
1:B:379:ASN:ND2	1:B:382:ASP:HB2	2.29	0.47
1:A:35:ILE:O	3:A:602:NDP:H2N	2.14	0.47
1:B:208:ARG:NH1	1:B:228:GLU:CD	2.68	0.47
1:A:264:SER:HB3	1:A:464:HIS:HB3	1.96	0.47
1:B:296:LEU:HD22	1:B:440:LEU:HG	1.95	0.47
1:B:78:ARG:HB2	1:B:99:LEU:O	2.14	0.47
1:A:7:ARG:HH11	1:A:7:ARG:HG3	1.79	0.46
1:A:114:ASP:OD2	1:A:116:GLU:HB3	2.15	0.46
1:A:469:HIS:O	1:A:472:PRO:HG2	2.15	0.46
1:A:99:LEU:HD21	1:A:135:ALA:HB2	1.96	0.46
1:B:493:ARG:NH1	1:B:503:ASP:OD2	2.48	0.46
1:A:307:LYS:HA	1:A:310:SER:OG	2.16	0.46
1:A:407:ALA:HA	1:A:419:MET:O	2.15	0.46
1:A:460:LEU:CD2	1:A:460:LEU:N	2.78	0.46
1:B:336:GLU:O	1:B:337:MET:HB2	2.14	0.46
1:B:47:GLU:HG2	1:B:225:TYR:OH	2.16	0.46
1:B:133:GLU:OE1	1:B:137:ARG:NH2	2.49	0.46
1:A:295:GLU:O	1:A:298:TRP:HB3	2.16	0.46
1:B:258:THR:O	1:B:258:THR:HG22	2.15	0.46
1:B:208:ARG:HH11	1:B:211:ILE:HB	1.81	0.45
1:B:208:ARG:HH12	1:B:228:GLU:CD	2.19	0.45
1:B:360:ASN:ND2	1:B:362:ASP:H	2.15	0.45
1:B:493:ARG:HG2	1:B:498:ASP:CB	2.46	0.45
1:B:106:GLN:HA	1:B:109:LEU:HD12	1.98	0.45
1:A:36:GLY:HA2	1:A:42:PRO:HD3	1.99	0.45
1:A:265:ILE:C	1:A:265:ILE:HD12	2.36	0.45
1:A:427:MET:SD	1:A:431:VAL:HG21	2.56	0.45
1:A:27:VAL:HG22	1:A:28:ALA:N	2.32	0.45
1:B:390:TRP:HE3	1:B:402:PRO:HG2	1.81	0.45
1:B:269:GLN:HG2	6:B:1031:HOH:O	2.16	0.45
1:A:108:LEU:HD22	1:A:127:ALA:HB2	1.99	0.45
1:A:59:LEU:HD11	1:A:66:PRO:HA	1.99	0.45
1:B:29:VAL:CG2	1:B:33:GLY:HA2	2.47	0.45
1:B:236:GLU:O	1:B:239:GLN:HB2	2.17	0.44
1:A:360:ASN:HD22	1:A:360:ASN:C	2.20	0.44

Continued on next page...

Continued from previous page...

Atom-1	Atom-2	Interatomic distance (Å)	Clash overlap (Å)
1:B:132:LEU:O	1:B:136:LEU:HG	2.17	0.44
1:A:155:GLY:HA3	3:A:602:NDP:C5N	2.46	0.44
1:A:383:ARG:O	1:B:423:ARG:NH1	2.50	0.44
1:A:404:HIS:CB	1:A:420:LEU:HD11	2.48	0.44
1:A:479:ARG:NH2	1:A:515:ILE:HA	2.32	0.44
1:B:390:TRP:CE3	1:B:402:PRO:HG2	2.52	0.44
1:A:195:GLU:CD	1:A:195:GLU:H	2.21	0.44
1:A:368:GLN:OE1	1:A:387:PHE:HA	2.18	0.44
1:B:35:ILE:HB	3:B:602:NDP:N7N	2.32	0.44
1:A:420:LEU:HD13	1:A:438:TYR:CZ	2.53	0.44
1:A:164:LEU:HD11	1:A:191:PHE:CE1	2.53	0.43
1:A:493:ARG:HG3	1:A:499:TYR:HA	2.01	0.43
1:A:42:PRO:HG3	1:A:187:CYS:SG	2.58	0.43
1:B:372:ILE:O	1:B:376:LEU:HB2	2.18	0.43
1:B:219:ASN:N	1:B:219:ASN:HD22	2.17	0.43
1:B:406:LEU:HB3	1:B:421:TYR:HB3	2.01	0.43
1:A:10:GLU:HG3	6:A:1018:HOH:O	2.18	0.43
1:B:278:ARG:NH2	6:B:1292:HOH:O	2.51	0.43
1:B:395:LEU:CB	1:B:396:PRO:HD3	2.48	0.43
1:A:26:VAL:CG1	1:A:55:LEU:HD23	2.49	0.43
1:B:264:SER:HB3	1:B:464:HIS:HB3	2.01	0.43
1:B:271:ARG:NH1	1:B:455:GLU:OE1	2.51	0.43
1:B:23:PHE:CE1	1:B:172:LEU:HD13	2.54	0.42
1:B:247:ILE:HG12	1:B:265:ILE:HG12	2.02	0.42
1:B:493:ARG:HH11	1:B:503:ASP:CG	2.23	0.42
1:A:296:LEU:O	1:A:296:LEU:HD13	2.19	0.42
1:B:297:LEU:HB3	1:B:301:ARG:HH21	1.84	0.42
1:B:53:ARG:HA	1:B:53:ARG:HE	1.85	0.42
1:B:19:ALA:CB	1:B:20:LEU:HD12	2.49	0.42
1:B:74:VAL:HG13	1:B:154:ILE:HG12	2.02	0.42
1:B:297:LEU:HD12	1:B:297:LEU:HA	1.90	0.42
1:B:407:ALA:HA	1:B:419:MET:O	2.20	0.42
1:A:425:CYS:SG	1:A:460:LEU:HD13	2.60	0.42
1:A:267:GLY:O	1:B:271:ARG:NH2	2.53	0.41
1:A:26:VAL:O	1:A:26:VAL:HG23	2.20	0.41
1:B:360:ASN:HD21	1:B:362:ASP:HB2	1.85	0.41
1:B:257:ARG:HB2	1:B:257:ARG:NH1	2.35	0.41
1:B:30:ASP:HA	1:B:180:ILE:O	2.20	0.41
1:A:156:GLY:HA3	3:A:602:NDP:PA	2.61	0.41
1:A:392:PRO:HD2	1:B:350:PHE:CZ	2.55	0.41
1:B:387:PHE:CE2	1:B:407:ALA:HB3	2.55	0.41

Continued on next page...

Continued from previous page...

Atom-1	Atom-2	Interatomic distance (Å)	Clash overlap (Å)
1:A:78:ARG:HB2	1:A:100:SER:HB2	2.03	0.41
1:B:460:LEU:HD12	1:B:460:LEU:N	2.35	0.41
1:B:52:PHE:CG	2:B:601:C50:H22A	2.56	0.41
1:B:62:LYS:O	1:B:63:ASN:HB2	2.19	0.41
1:A:170:HIS:C	1:A:171:LEU:HD12	2.41	0.41
1:A:207:GLN:O	1:A:230:LEU:HA	2.21	0.41
1:A:406:LEU:HB3	1:A:421:TYR:HB3	2.02	0.41
1:B:155:GLY:HA3	3:B:602:NDP:H5N	2.02	0.41
1:B:209:GLU:HG2	1:B:210:THR:HG23	2.03	0.41
1:A:402:PRO:O	1:A:423:ARG:NE	2.45	0.40
1:A:5:LYS:HA	1:A:497:GLU:OE1	2.21	0.40
1:A:62:LYS:O	1:A:64:VAL:HG23	2.20	0.40
1:A:317:TRP:CZ3	1:A:400:LEU:HD21	2.56	0.40
1:B:276:ASN:O	1:B:277:ASN:HB2	2.21	0.40
1:A:89:ARG:HA	1:A:90:PRO:HA	1.81	0.40

There are no symmetry-related clashes.

5.3 Torsion angles [i](#)

5.3.1 Protein backbone [i](#)

In the following table, the Percentiles column shows the percent Ramachandran outliers of the chain as a percentile score with respect to all X-ray entries followed by that with respect to entries of similar resolution.

The Analysed column shows the number of residues for which the backbone conformation was analysed, and the total number of residues.

Mol	Chain	Analysed	Favoured	Allowed	Outliers	Percentiles	
1	A	512/521 (98%)	486 (95%)	24 (5%)	2 (0%)	34	46
1	B	511/521 (98%)	484 (95%)	26 (5%)	1 (0%)	47	61
All	All	1023/1042 (98%)	970 (95%)	50 (5%)	3 (0%)	41	53

All (3) Ramachandran outliers are listed below:

Mol	Chain	Res	Type
1	A	343	TYR
1	B	343	TYR
1	A	113	PRO

5.3.2 Protein sidechains [i](#)

In the following table, the Percentiles column shows the percent sidechain outliers of the chain as a percentile score with respect to all X-ray entries followed by that with respect to entries of similar resolution.

The Analysed column shows the number of residues for which the sidechain conformation was analysed, and the total number of residues.

Mol	Chain	Analysed	Rotameric	Outliers	Percentiles	
1	A	440/446 (99%)	417 (95%)	23 (5%)	23	35
1	B	439/446 (98%)	413 (94%)	26 (6%)	19	29
All	All	879/892 (98%)	830 (94%)	49 (6%)	21	31

All (49) residues with a non-rotameric sidechain are listed below:

Mol	Chain	Res	Type
1	A	14	GLU
1	A	95	LEU
1	A	96	ASN
1	A	109	LEU
1	A	128	VAL
1	A	138	LEU
1	A	139	LEU
1	A	146	PRO
1	A	169	VAL
1	A	219	ASN
1	A	257	ARG
1	A	300	LEU
1	A	326	LEU
1	A	360	ASN
1	A	376	LEU
1	A	395	LEU
1	A	400	LEU
1	A	403	CYS
1	A	440	LEU
1	A	456	LEU
1	A	460	LEU
1	A	496	LEU
1	A	515	ILE
1	B	12	VAL
1	B	29	VAL
1	B	53	ARG
1	B	65	LYS

Continued on next page...

Continued from previous page...

Mol	Chain	Res	Type
1	B	71	ARG
1	B	115	GLU
1	B	138	LEU
1	B	169	VAL
1	B	184	GLU
1	B	192	ARG
1	B	207	GLN
1	B	219	ASN
1	B	257	ARG
1	B	263	LEU
1	B	274	LEU
1	B	297	LEU
1	B	309	LEU
1	B	326	LEU
1	B	376	LEU
1	B	386	LEU
1	B	395	LEU
1	B	456	LEU
1	B	475	GLU
1	B	491	ARG
1	B	493	ARG
1	B	515	ILE

Some sidechains can be flipped to improve hydrogen bonding and reduce clashes. All (19) such sidechains are listed below:

Mol	Chain	Res	Type
1	A	32	HIS
1	A	63	ASN
1	A	119	ASN
1	A	219	ASN
1	A	239	GLN
1	A	357	HIS
1	A	360	ASN
1	A	434	ASN
1	A	458	HIS
1	A	476	GLN
1	B	63	ASN
1	B	207	GLN
1	B	219	ASN
1	B	276	ASN
1	B	277	ASN
1	B	320	ASN

Continued on next page...

Continued from previous page...

Mol	Chain	Res	Type
1	B	357	HIS
1	B	360	ASN
1	B	476	GLN

5.3.3 RNA [i](#)

There are no RNA molecules in this entry.

5.4 Non-standard residues in protein, DNA, RNA chains [i](#)

There are no non-standard protein/DNA/RNA residues in this entry.

5.5 Carbohydrates [i](#)

There are no carbohydrates in this entry.

5.6 Ligand geometry [i](#)

11 ligands are modelled in this entry.

In the following table, the Counts columns list the number of bonds (or angles) for which Mogul statistics could be retrieved, the number of bonds (or angles) that are observed in the model and the number of bonds (or angles) that are defined in the Chemical Component Dictionary. The Link column lists molecule types, if any, to which the group is linked. The Z score for a bond length (or angle) is the number of standard deviations the observed value is removed from the expected value. A bond length (or angle) with $|Z| > 2$ is considered an outlier worth inspection. RMSZ is the root-mean-square of all Z scores of the bond lengths (or angles).

Mol	Type	Chain	Res	Link	Bond lengths			Bond angles		
					Counts	RMSZ	# Z > 2	Counts	RMSZ	# Z > 2
5	GOL	B	702	-	5,5,5	0.69	0	5,5,5	0.15	0
2	C50	B	601	-	21,24,24	2.40	4 (19%)	23,34,34	1.22	2 (8%)
4	UMP	B	603	-	18,21,21	1.85	3 (16%)	21,31,31	1.74	6 (28%)
2	C50	A	601	-	21,24,24	2.40	5 (23%)	23,34,34	1.31	3 (13%)
5	GOL	B	703	-	5,5,5	0.48	0	5,5,5	0.16	0
5	GOL	B	704	-	5,5,5	0.39	0	5,5,5	0.37	0
4	UMP	A	603	-	18,21,21	1.79	4 (22%)	21,31,31	1.65	5 (23%)
5	GOL	A	705	-	5,5,5	0.59	0	5,5,5	0.15	0
5	GOL	A	701	-	5,5,5	0.61	0	5,5,5	0.18	0
3	NDP	A	602	-	45,52,52	1.71	7 (15%)	53,80,80	1.60	11 (20%)

Mol	Type	Chain	Res	Link	Bond lengths			Bond angles		
					Counts	RMSZ	# Z > 2	Counts	RMSZ	# Z > 2
3	NDP	B	602	-	45,52,52	1.67	9 (20%)	53,80,80	1.59	10 (18%)

In the following table, the Chirals column lists the number of chiral outliers, the number of chiral centers analysed, the number of these observed in the model and the number defined in the Chemical Component Dictionary. Similar counts are reported in the Torsion and Rings columns. '-' means no outliers of that kind were identified.

Mol	Type	Chain	Res	Link	Chirals	Torsions	Rings
5	GOL	B	702	-	-	0/4/4/4	-
2	C50	B	601	-	-	1/8/27/27	0/2/2/2
4	UMP	B	603	-	-	1/7/22/22	0/2/2/2
2	C50	A	601	-	-	1/8/27/27	0/2/2/2
5	GOL	B	703	-	-	0/4/4/4	-
5	GOL	B	704	-	-	0/4/4/4	-
4	UMP	A	603	-	-	1/7/22/22	0/2/2/2
5	GOL	A	705	-	-	0/4/4/4	-
5	GOL	A	701	-	-	0/4/4/4	-
3	NDP	A	602	-	-	4/30/77/77	0/5/5/5
3	NDP	B	602	-	-	4/30/77/77	0/5/5/5

All (32) bond length outliers are listed below:

Mol	Chain	Res	Type	Atoms	Z	Observed(Å)	Ideal(Å)
2	B	601	C50	C16-C15	7.19	1.49	1.39
2	A	601	C50	C16-C15	6.86	1.49	1.39
4	B	603	UMP	C4-N3	5.30	1.42	1.33
2	A	601	C50	C19-C14	5.14	1.50	1.39
2	B	601	C50	C19-C14	5.10	1.50	1.39
2	A	601	C50	C18-C17	4.89	1.49	1.38
2	B	601	C50	C18-C17	4.79	1.49	1.38
4	A	603	UMP	C4-N3	4.78	1.41	1.33
3	A	602	NDP	C4N-C3N	-4.37	1.41	1.49
3	B	602	NDP	C4N-C3N	-4.15	1.41	1.49
3	A	602	NDP	C4N-C5N	-4.09	1.38	1.48
3	B	602	NDP	C4N-C5N	-4.04	1.38	1.48
4	B	603	UMP	O4'-C1'	3.75	1.50	1.42
4	A	603	UMP	O4'-C1'	3.73	1.50	1.42
3	A	602	NDP	C2N-C3N	3.53	1.44	1.34
3	B	602	NDP	C2N-C3N	3.51	1.44	1.34
3	A	602	NDP	C6N-C5N	3.23	1.39	1.33
3	B	602	NDP	C3B-C2B	-3.23	1.45	1.52
3	B	602	NDP	C6N-C5N	3.17	1.39	1.33

Continued on next page...

Continued from previous page...

Mol	Chain	Res	Type	Atoms	Z	Observed(Å)	Ideal(Å)
3	A	602	NDP	C4A-N3A	3.15	1.40	1.35
3	A	602	NDP	C3B-C2B	-3.03	1.46	1.52
3	B	602	NDP	C4A-N3A	2.57	1.39	1.35
2	A	601	C50	C2-N3	2.42	1.41	1.36
3	B	602	NDP	P2B-O2B	-2.40	1.54	1.59
3	A	602	NDP	C3B-C4B	-2.40	1.46	1.53
3	B	602	NDP	C3B-C4B	-2.33	1.47	1.53
4	A	603	UMP	O4'-C4'	2.32	1.50	1.45
4	A	603	UMP	P-OP3	-2.25	1.46	1.54
2	B	601	C50	C2-N3	2.21	1.41	1.36
3	B	602	NDP	C2D-C1D	2.21	1.60	1.53
4	B	603	UMP	P-OP3	-2.10	1.46	1.54
2	A	601	C50	C15-CL20	2.05	1.77	1.72

All (37) bond angle outliers are listed below:

Mol	Chain	Res	Type	Atoms	Z	Observed(°)	Ideal(°)
3	B	602	NDP	C1D-N1N-C2N	-4.35	113.87	121.11
3	A	602	NDP	C1D-N1N-C2N	-4.33	113.89	121.11
3	A	602	NDP	C3N-C2N-N1N	-4.18	117.13	123.10
3	B	602	NDP	C3N-C2N-N1N	-4.15	117.18	123.10
2	A	601	C50	N3-C2-N1	-3.93	119.82	126.47
2	B	601	C50	N3-C2-N1	-3.53	120.51	126.47
4	B	603	UMP	C5-C4-N3	-3.50	115.61	123.31
4	A	603	UMP	C5-C4-N3	-3.44	115.74	123.31
3	B	602	NDP	C3B-C2B-C1B	-3.27	96.74	102.89
3	A	602	NDP	C3B-C2B-C1B	-3.16	96.94	102.89
4	B	603	UMP	C4'-O4'-C1'	3.06	116.85	109.45
4	A	603	UMP	O4'-C1'-C2'	-2.88	100.82	106.25
3	B	602	NDP	C3D-C2D-C1D	-2.87	95.98	101.43
3	B	602	NDP	O7N-C7N-N7N	-2.78	116.38	122.88
3	A	602	NDP	O7N-C7N-N7N	-2.74	116.46	122.88
4	A	603	UMP	C4'-O4'-C1'	2.73	116.05	109.45
3	A	602	NDP	C3D-C2D-C1D	-2.67	96.35	101.43
3	A	602	NDP	O3B-C3B-C4B	2.66	118.74	111.05
3	A	602	NDP	O3B-C3B-C2B	2.62	118.60	111.17
4	B	603	UMP	O4'-C1'-C2'	-2.61	101.33	106.25
4	B	603	UMP	C2'-C3'-C4'	2.56	108.10	102.76
4	B	603	UMP	O4'-C4'-C3'	-2.54	99.74	105.67
3	B	602	NDP	O3B-C3B-C4B	2.52	118.34	111.05
4	A	603	UMP	C2'-C3'-C4'	2.47	107.91	102.76
4	B	603	UMP	C2'-C1'-N1	2.47	119.97	114.27

Continued on next page...

Continued from previous page...

Mol	Chain	Res	Type	Atoms	Z	Observed(°)	Ideal(°)
3	B	602	NDP	N3A-C2A-N1A	-2.45	124.85	128.68
4	A	603	UMP	O4'-C4'-C3'	-2.40	100.08	105.67
2	A	601	C50	N7-C2-N3	2.39	120.44	116.57
3	B	602	NDP	C2D-C3D-C4D	2.30	107.12	102.64
3	B	602	NDP	O3B-C3B-C2B	2.26	117.59	111.17
3	A	602	NDP	N3A-C2A-N1A	-2.26	125.14	128.68
3	A	602	NDP	C2D-C3D-C4D	2.19	106.89	102.64
3	A	602	NDP	O2A-PA-O1A	2.10	122.62	112.24
2	A	601	C50	C23-C6-C22	-2.05	107.85	110.86
3	B	602	NDP	O2A-PA-O1A	2.05	122.36	112.24
3	A	602	NDP	C2B-C3B-C4B	2.05	106.44	101.99
2	B	601	C50	N7-C2-N3	2.03	119.86	116.57

There are no chirality outliers.

All (12) torsion outliers are listed below:

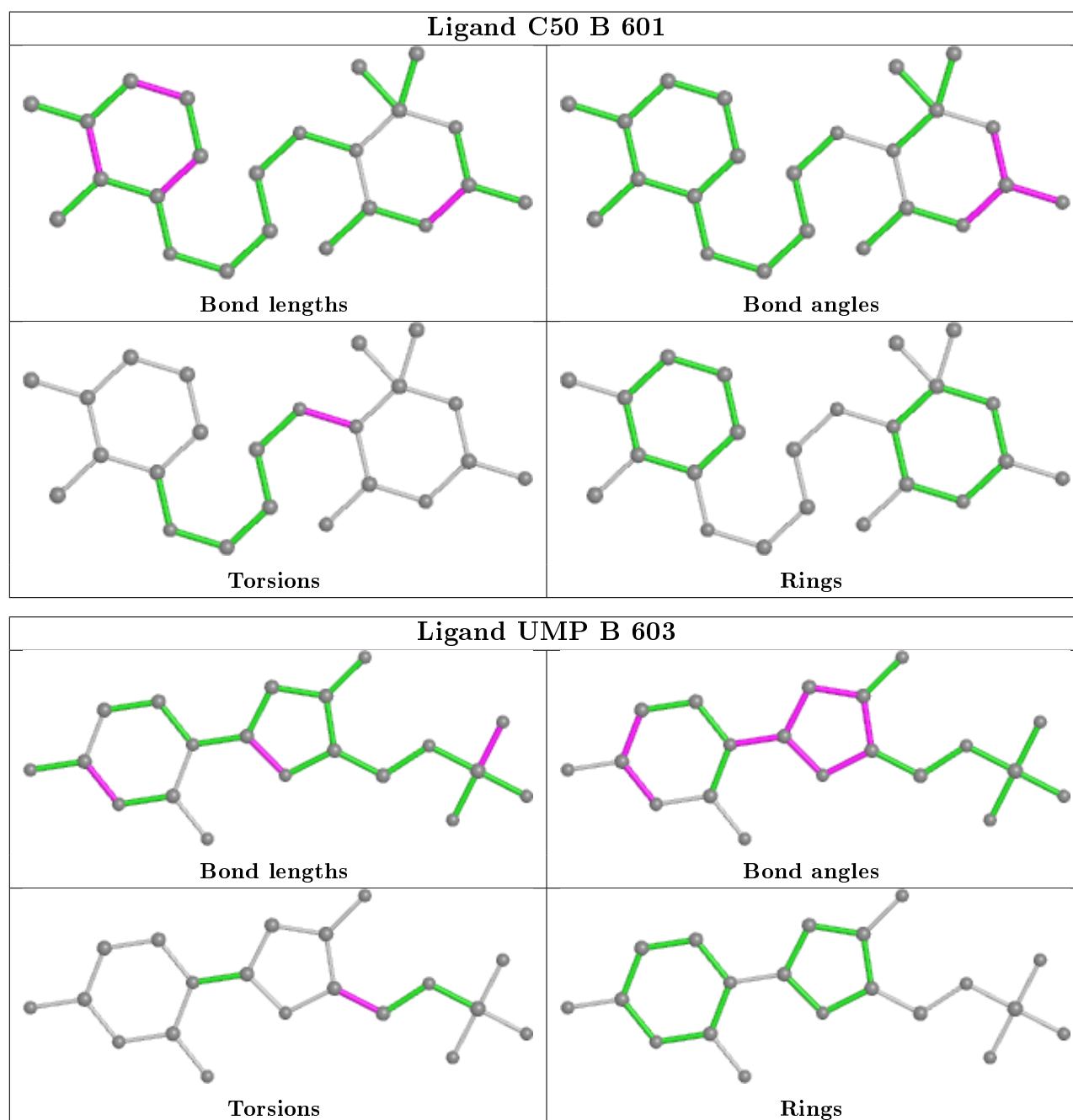
Mol	Chain	Res	Type	Atoms
2	B	601	C50	C6-N5-O9-C10
2	A	601	C50	C6-N5-O9-C10
3	B	602	NDP	O4D-C1D-N1N-C2N
3	A	602	NDP	O4D-C1D-N1N-C2N
3	A	602	NDP	C2D-C1D-N1N-C2N
3	B	602	NDP	C2D-C1D-N1N-C2N
4	B	603	UMP	O4'-C4'-C5'-O5'
3	B	602	NDP	C3B-C4B-C5B-O5B
4	A	603	UMP	O4'-C4'-C5'-O5'
3	A	602	NDP	C3B-C4B-C5B-O5B
3	A	602	NDP	C2N-C3N-C7N-N7N
3	B	602	NDP	C2N-C3N-C7N-N7N

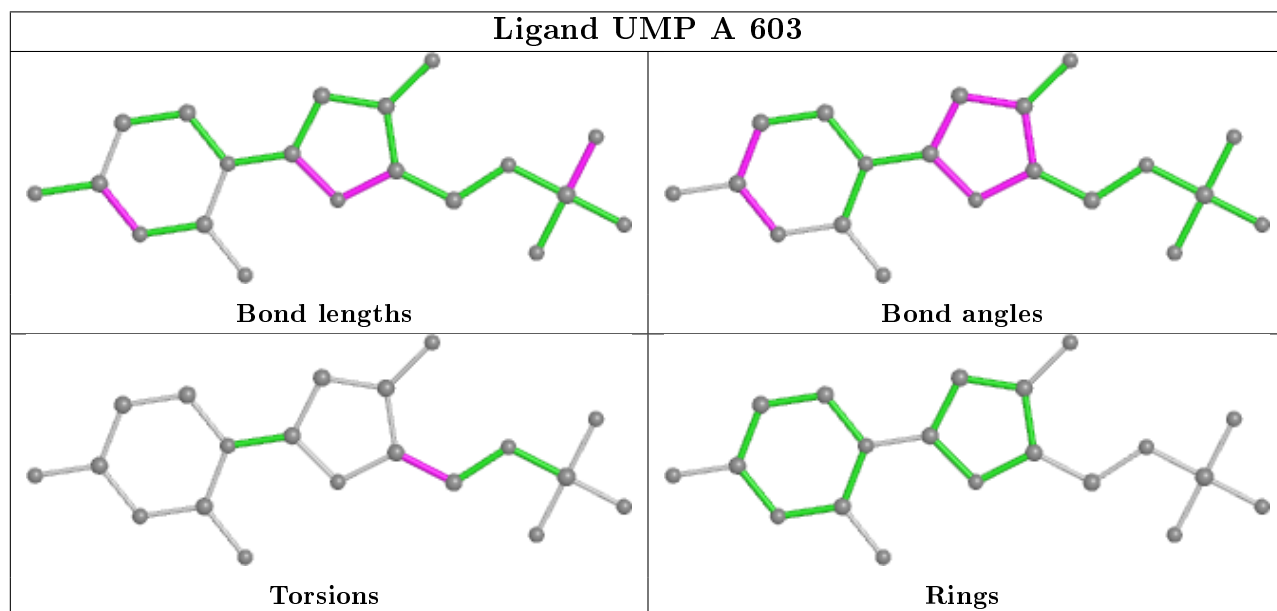
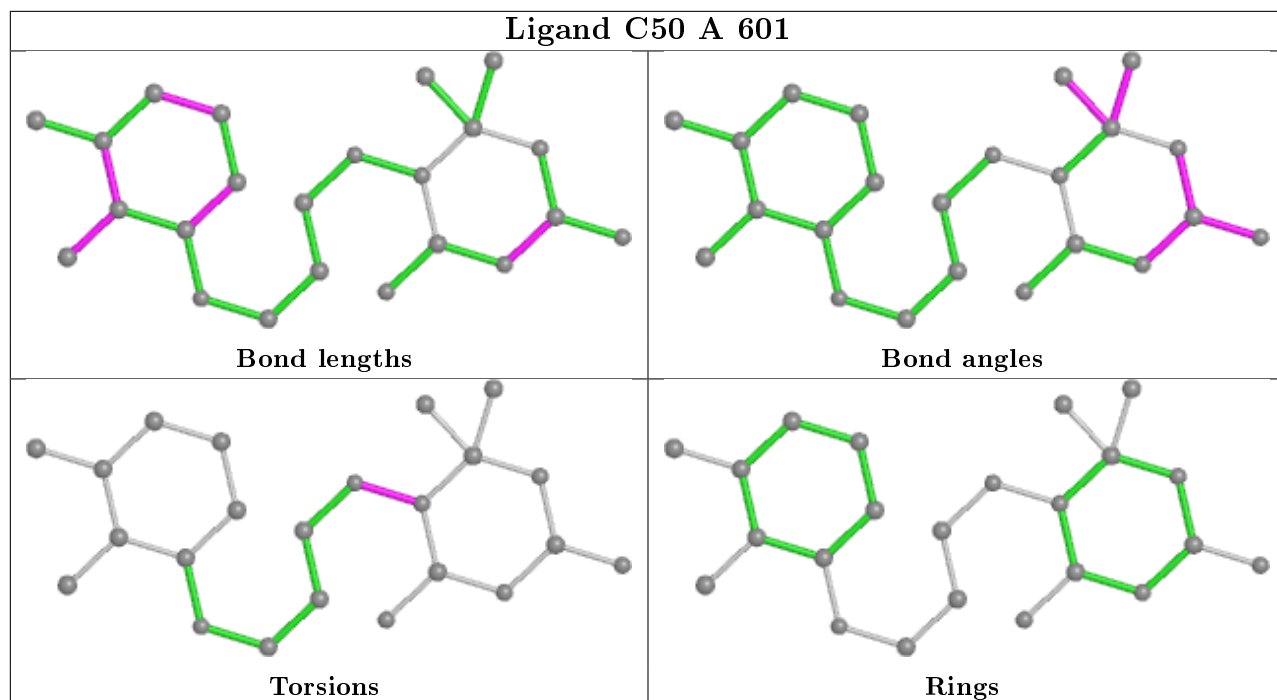
There are no ring outliers.

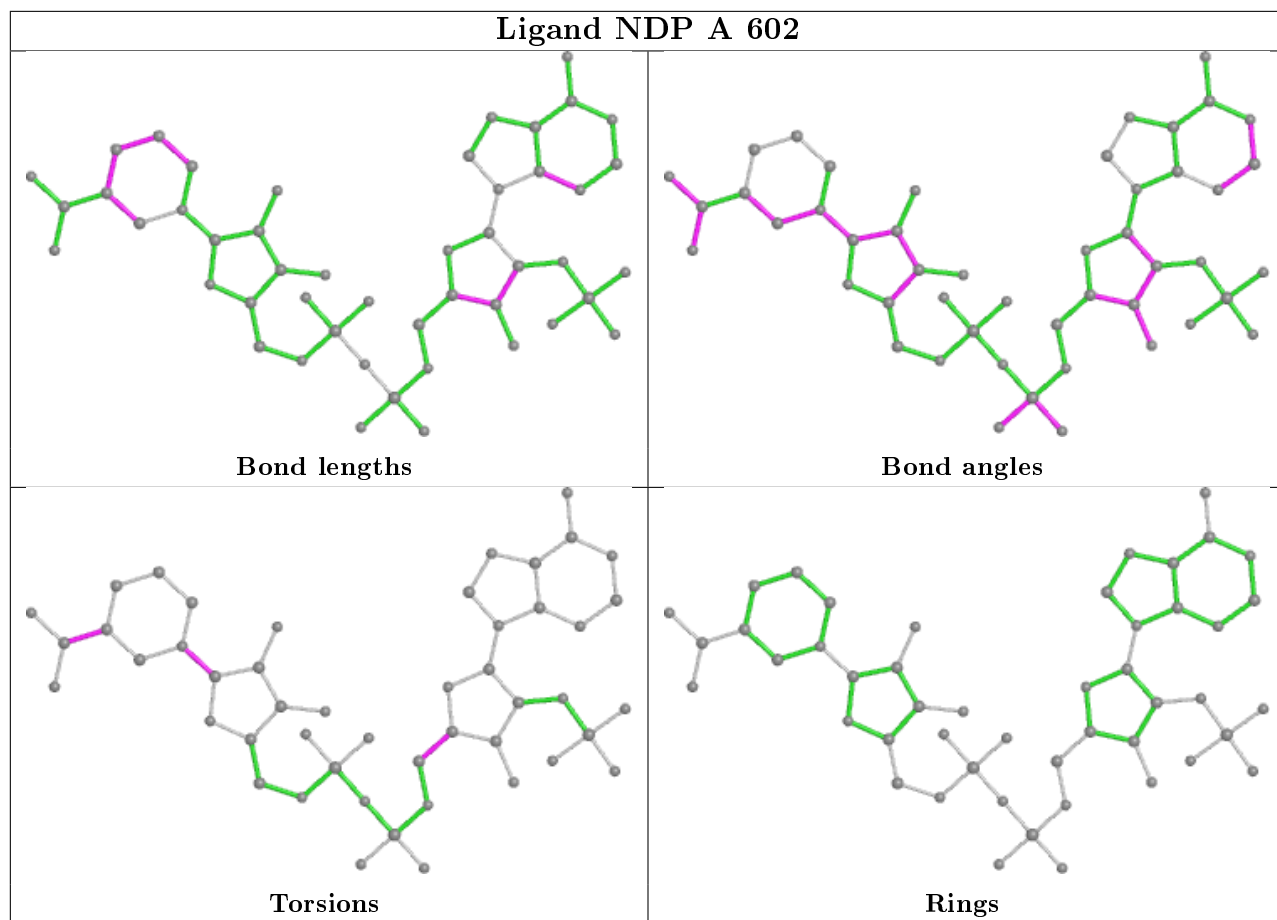
7 monomers are involved in 14 short contacts:

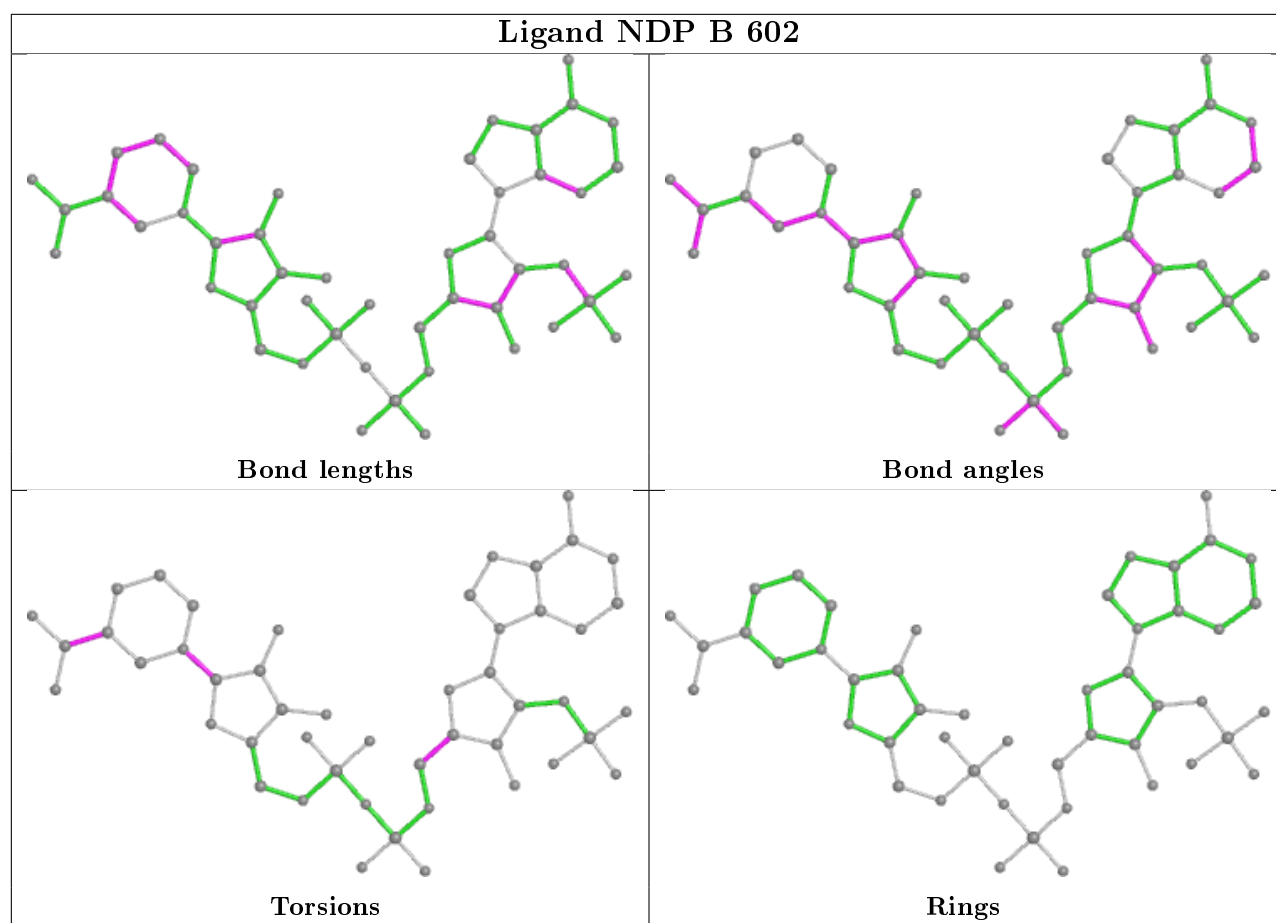
Mol	Chain	Res	Type	Clashes	Symm-Clashes
5	B	702	GOL	1	0
2	B	601	C50	1	0
5	B	704	GOL	1	0
4	A	603	UMP	1	0
5	A	705	GOL	2	0
3	A	602	NDP	4	0
3	B	602	NDP	4	0

The following is a two-dimensional graphical depiction of Mogul quality analysis of bond lengths, bond angles, torsion angles, and ring geometry for all instances of the Ligand of Interest. In addition, ligands with molecular weight > 250 and outliers as shown on the validation Tables will also be included. For torsion angles, if less than 5% of the Mogul distribution of torsion angles is within 10 degrees of the torsion angle in question, then that torsion angle is considered an outlier. Any bond that is central to one or more torsion angles identified as an outlier by Mogul will be highlighted in the graph. For rings, the root-mean-square deviation (RMSD) between the ring in question and similar rings identified by Mogul is calculated over all ring torsion angles. If the average RMSD is greater than 60 degrees and the minimal RMSD between the ring in question and any Mogul-identified rings is also greater than 60 degrees, then that ring is considered an outlier. The outliers are highlighted in purple. The color gray indicates Mogul did not find sufficient equivalents in the CSD to analyse the geometry.









5.7 Other polymers [\(i\)](#)

There are no such residues in this entry.

5.8 Polymer linkage issues [\(i\)](#)

There are no chain breaks in this entry.

6 Fit of model and data

6.1 Protein, DNA and RNA chains

In the following table, the column labelled ‘#RSRZ> 2’ contains the number (and percentage) of RSRZ outliers, followed by percent RSRZ outliers for the chain as percentile scores relative to all X-ray entries and entries of similar resolution. The OWAB column contains the minimum, median, 95th percentile and maximum values of the occupancy-weighted average B-factor per residue. The column labelled ‘Q< 0.9’ lists the number of (and percentage) of residues with an average occupancy less than 0.9.

Mol	Chain	Analysed	<RSRZ>	#RSRZ>2	OWAB(Å ²)	Q<0.9
1	A	514/521 (98%)	-0.31	12 (2%) 60 62	12, 24, 51, 90	0
1	B	513/521 (98%)	-0.23	10 (1%) 66 68	14, 29, 58, 90	0
All	All	1027/1042 (98%)	-0.27	22 (2%) 63 65	12, 26, 57, 90	0

All (22) RSRZ outliers are listed below:

Mol	Chain	Res	Type	RSRZ
1	A	117	LYS	5.7
1	B	183	SER	4.8
1	A	118	ARG	4.5
1	A	116	GLU	4.5
1	B	120	LEU	3.6
1	A	119	ASN	3.4
1	B	184	GLU	3.3
1	B	186	SER	3.3
1	A	120	LEU	3.2
1	B	122	ALA	3.1
1	B	3	LEU	2.9
1	B	117	LYS	2.8
1	A	184	GLU	2.8
1	A	121	HIS	2.7
1	A	183	SER	2.5
1	A	113	PRO	2.5
1	B	121	HIS	2.4
1	A	123	ASP	2.4
1	B	119	ASN	2.4
1	A	257	ARG	2.2
1	A	114	ASP	2.1
1	B	118	ARG	2.0

6.2 Non-standard residues in protein, DNA, RNA chains [i](#)

There are no non-standard protein/DNA/RNA residues in this entry.

6.3 Carbohydrates [i](#)

There are no carbohydrates in this entry.

6.4 Ligands [i](#)

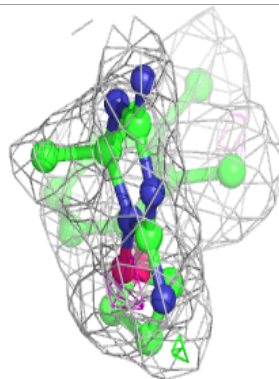
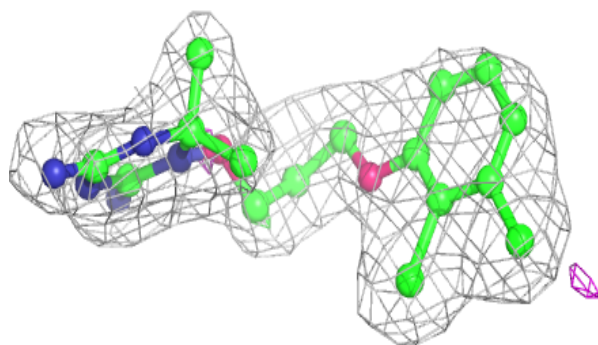
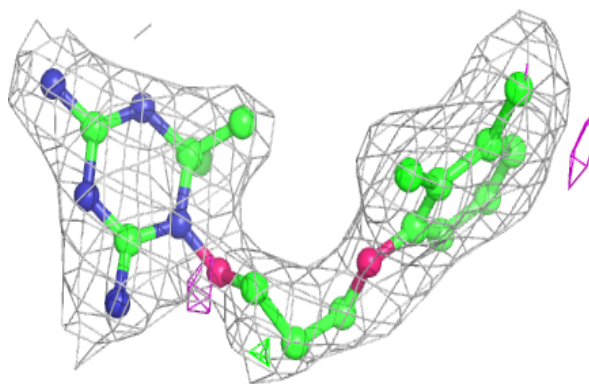
In the following table, the Atoms column lists the number of modelled atoms in the group and the number defined in the chemical component dictionary. The B-factors column lists the minimum, median, 95th percentile and maximum values of B factors of atoms in the group. The column labelled 'Q< 0.9' lists the number of atoms with occupancy less than 0.9.

Mol	Type	Chain	Res	Atoms	RSCC	RSR	B-factors(\AA^2)	Q<0.9
5	GOL	B	702	6/6	0.58	0.32	46,49,50,51	0
5	GOL	A	701	6/6	0.85	0.20	51,52,54,55	0
5	GOL	B	704	6/6	0.88	0.15	42,45,48,50	0
5	GOL	A	705	6/6	0.90	0.18	43,46,48,49	0
2	C50	A	601	23/23	0.92	0.13	27,36,42,46	0
5	GOL	B	703	6/6	0.93	0.17	42,45,46,49	0
2	C50	B	601	23/23	0.93	0.18	38,46,56,57	0
4	UMP	A	603	20/20	0.95	0.13	32,37,39,39	0
3	NDP	B	602	48/48	0.95	0.11	34,38,43,44	0
3	NDP	A	602	48/48	0.98	0.09	19,24,27,29	0
4	UMP	B	603	20/20	0.98	0.10	24,26,29,31	0

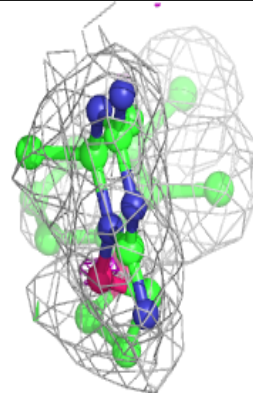
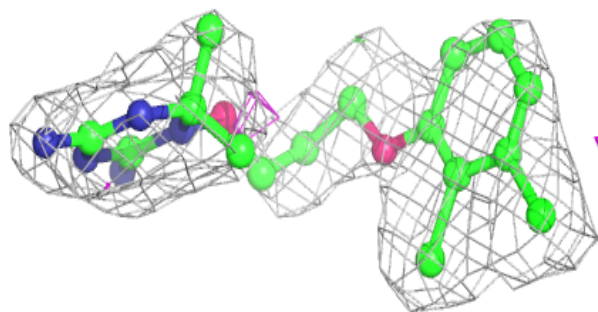
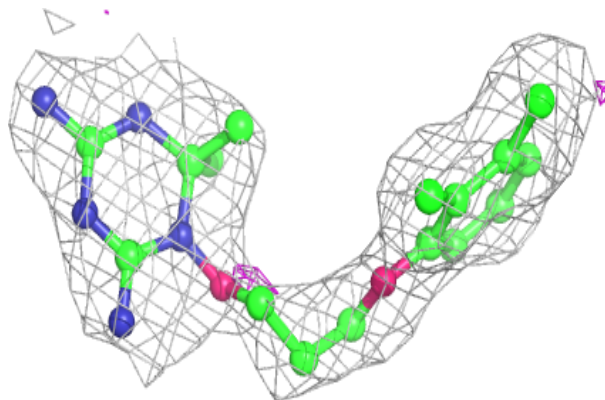
The following is a graphical depiction of the model fit to experimental electron density of all instances of the Ligand of Interest. In addition, ligands with molecular weight > 250 and outliers as shown on the geometry validation Tables will also be included. Each fit is shown from different orientation to approximate a three-dimensional view.

Electron density around C50 A 601:

$2mF_o-DF_c$ (at 0.7 rmsd) in gray
 mF_o-DF_c (at 3 rmsd) in purple (negative)
and green (positive)

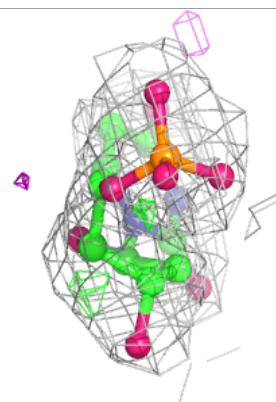
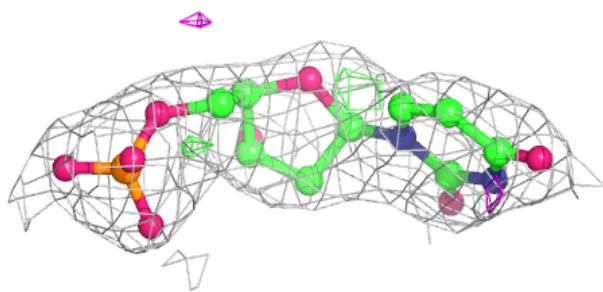
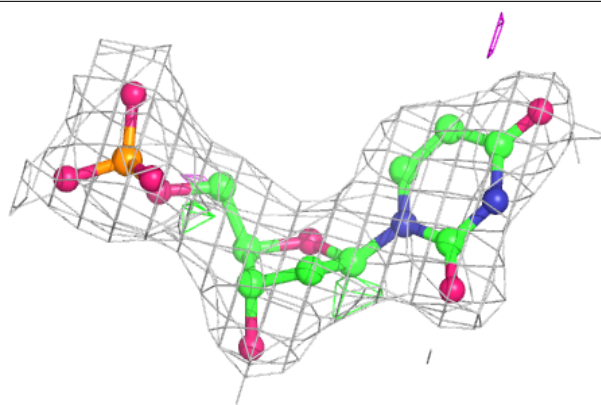
**Electron density around C50 B 601:**

$2mF_o-DF_c$ (at 0.7 rmsd) in gray
 mF_o-DF_c (at 3 rmsd) in purple (negative)
and green (positive)

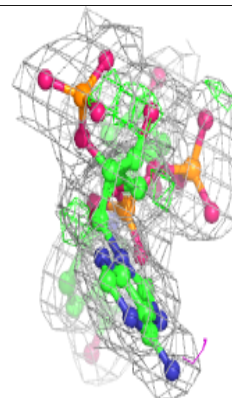
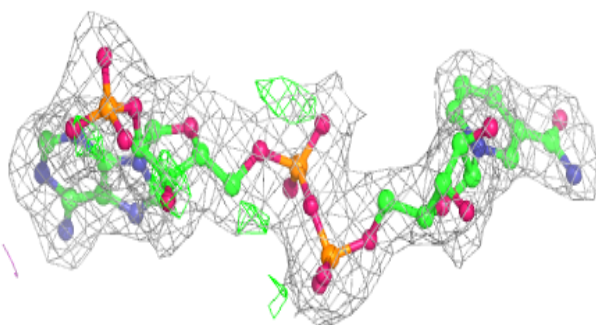
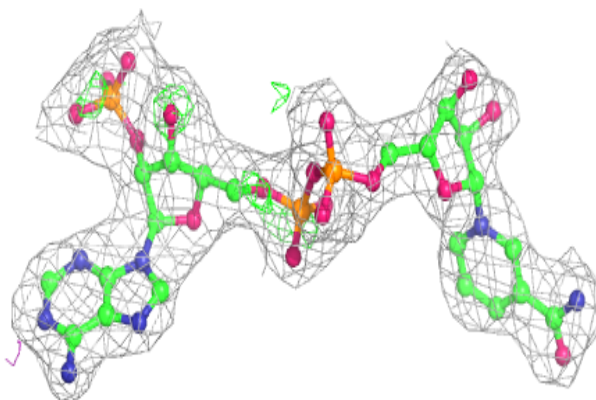


Electron density around UMP A 603:

$2mF_o-DF_c$ (at 0.7 rmsd) in gray
 mF_o-DF_c (at 3 rmsd) in purple (negative)
and green (positive)

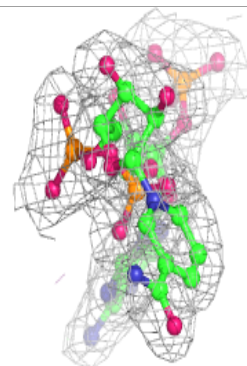
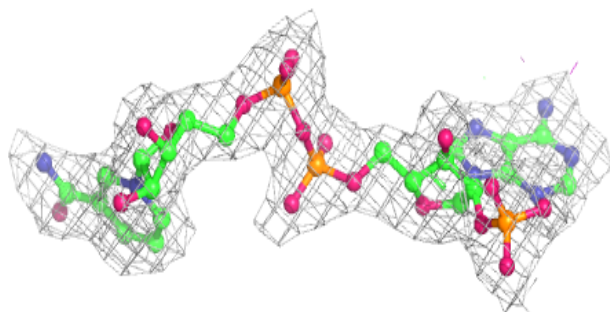
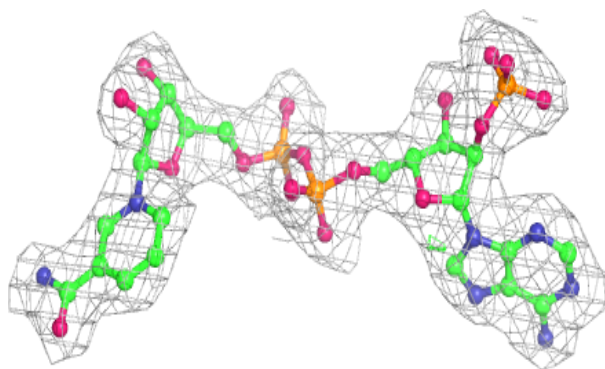
**Electron density around NDP B 602:**

$2mF_o-DF_c$ (at 0.7 rmsd) in gray
 mF_o-DF_c (at 3 rmsd) in purple (negative)
and green (positive)

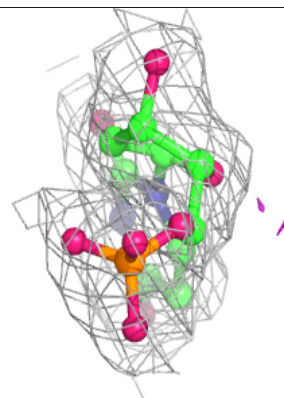
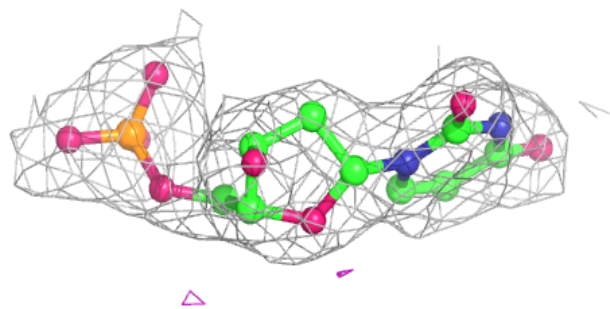
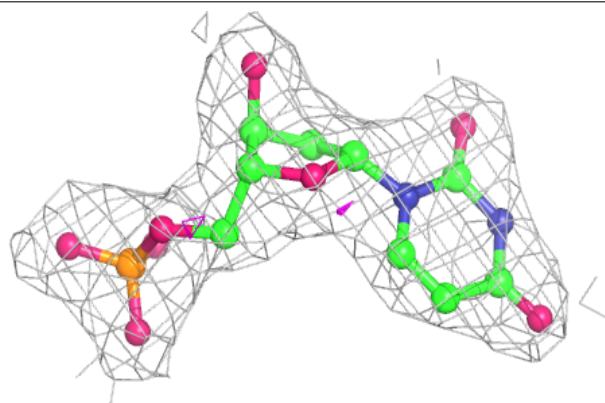


Electron density around NDP A 602:

$2mF_o-DF_c$ (at 0.7 rmsd) in gray
 mF_o-DF_c (at 3 rmsd) in purple (negative)
and green (positive)

**Electron density around UMP B 603:**

$2mF_o-DF_c$ (at 0.7 rmsd) in gray
 mF_o-DF_c (at 3 rmsd) in purple (negative)
and green (positive)



6.5 Other polymers [i](#)

There are no such residues in this entry.