



wwPDB X-ray Structure Validation Summary Report ⓘ

Aug 28, 2023 – 06:16 AM EDT

PDB ID : 3IDY
Title : Crystal structure of HIV-gp120 core in complex with CD4-binding site antibody b13, space group C2221
Authors : Chen, L.; Kwon, Y.D.; Zhou, T.; Wu, X.; O'Dell, S.; Cavacini, L.; Hessel, A.J.; Pancera, M.; Tang, M.; Xu, L.; Yang, Z.Y.; Zhang, M.Y.; Arthos, J.; Burton, D.R.; Dimitrov, D.S.; Nabel, G.J.; Posner, M.; Sodroski, J.; Wyatt, R.; Mascola, J.R.; Kwong, P.D.
Deposited on : 2009-07-22
Resolution : 3.20 Å(reported)

This is a wwPDB X-ray Structure Validation Summary Report for a publicly released PDB entry.

We welcome your comments at validation@mail.wwpdb.org

A user guide is available at

<https://www.wwpdb.org/validation/2017/XrayValidationReportHelp>

with specific help available everywhere you see the ⓘ symbol.

The types of validation reports are described at

<http://www.wwpdb.org/validation/2017/FAQs#types>.

The following versions of software and data (see [references ⓘ](#)) were used in the production of this report:

MolProbity : 4.02b-467
Mogul : 1.8.5 (274361), CSD as541be (2020)
Xtriage (Phenix) : 1.13
EDS : 2.35
Percentile statistics : 20191225.v01 (using entries in the PDB archive December 25th 2019)
Refmac : 5.8.0158
CCP4 : 7.0.044 (Gargrove)
Ideal geometry (proteins) : Engh & Huber (2001)
Ideal geometry (DNA, RNA) : Parkinson et al. (1996)

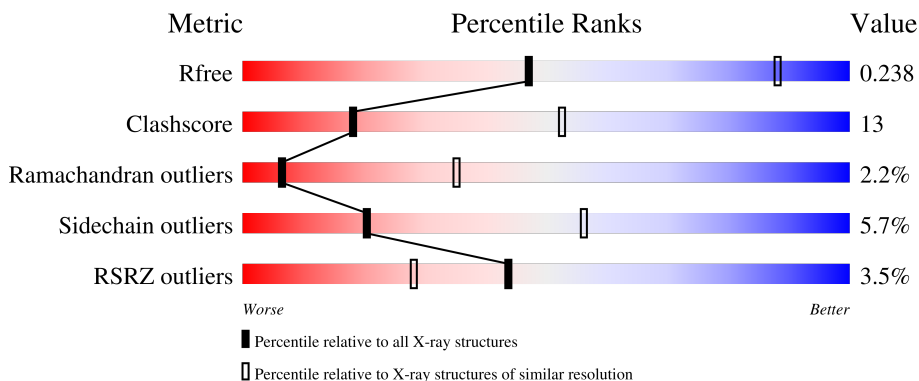
1 Overall quality at a glance

The following experimental techniques were used to determine the structure:

X-RAY DIFFRACTION

The reported resolution of this entry is 3.20 Å.

Percentile scores (ranging between 0-100) for global validation metrics of the entry are shown in the following graphic. The table shows the number of entries on which the scores are based.



Metric	Whole archive (#Entries)	Similar resolution (#Entries, resolution range(Å))
R_{free}	130704	1133 (3.20-3.20)
Clashscore	141614	1253 (3.20-3.20)
Ramachandran outliers	138981	1234 (3.20-3.20)
Sidechain outliers	138945	1233 (3.20-3.20)
RSRZ outliers	127900	1095 (3.20-3.20)

The table below summarises the geometric issues observed across the polymeric chains and their fit to the electron density. The red, orange, yellow and green segments of the lower bar indicate the fraction of residues that contain outliers for ≥ 3 , 2, 1 and 0 types of geometric quality criteria respectively. A grey segment represents the fraction of residues that are not modelled. The numeric value for each fraction is indicated below the corresponding segment, with a dot representing fractions $\leq 5\%$. The upper red bar (where present) indicates the fraction of residues that have poor fit to the electron density. The numeric value is given above the bar.

Mol	Chain	Length	Quality of chain
1	A	317	 2% 68% 25% . .
1	G	317	 3% 68% 24% . .
2	B	231	 9% 65% 32% . .
2	H	231	 3% 67% 31% . .

Continued on next page...

Continued from previous page...

Mol	Chain	Length	Quality of chain
3	C	215	 3% 72% 25%
3	L	215	 3% 73% 24%

The following table lists non-polymeric compounds, carbohydrate monomers and non-standard residues in protein, DNA, RNA chains that are outliers for geometric or electron-density-fit criteria:

Mol	Type	Chain	Res	Chirality	Geometry	Clashes	Electron density
4	NAG	A	588	-	-	-	X
4	NAG	A	839	-	-	-	X
4	NAG	A	856	-	-	-	X
4	NAG	A	963	-	-	-	X
4	NAG	G	588	X	-	-	X
4	NAG	G	856	-	-	-	X

2 Entry composition

There are 6 unique types of molecules in this entry. The entry contains 12038 atoms, of which 0 are hydrogens and 0 are deuteriums.

In the tables below, the ZeroOcc column contains the number of atoms modelled with zero occupancy, the AltConf column contains the number of residues with at least one atom in alternate conformation and the Trace column contains the number of residues modelled with at most 2 atoms.

- Molecule 1 is a protein called HIV-1 HxBc2 gp120 core.

Mol	Chain	Residues	Atoms					ZeroOcc	AltConf	Trace
			Total	C	N	O	S			
1	G	306	Total 2367	C 1483	N 412	O 448	S 24	0	0	0
1	A	303	Total 2354	C 1476	N 409	O 445	S 24	0	0	0

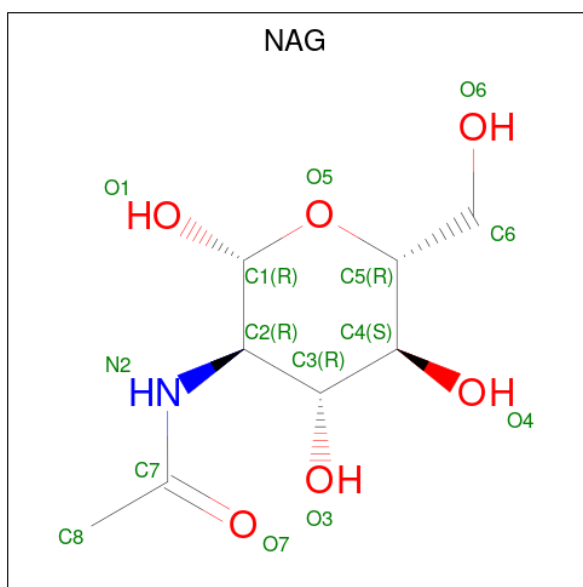
- Molecule 2 is a protein called Fab b13 heavy chain.

Mol	Chain	Residues	Atoms					ZeroOcc	AltConf	Trace
			Total	C	N	O	S			
2	H	229	Total 1730	C 1092	N 297	O 334	S 7	0	0	0
2	B	229	Total 1730	C 1092	N 297	O 334	S 7	0	0	0

- Molecule 3 is a protein called Fab b13 light chain.

Mol	Chain	Residues	Atoms					ZeroOcc	AltConf	Trace
			Total	C	N	O	S			
3	L	214	Total 1654	C 1028	N 284	O 337	S 5	0	0	0
3	C	214	Total 1654	C 1028	N 284	O 337	S 5	0	0	0

- Molecule 4 is 2-acetamido-2-deoxy-beta-D-glucopyranose (three-letter code: NAG) (formula: C₈H₁₅NO₆).



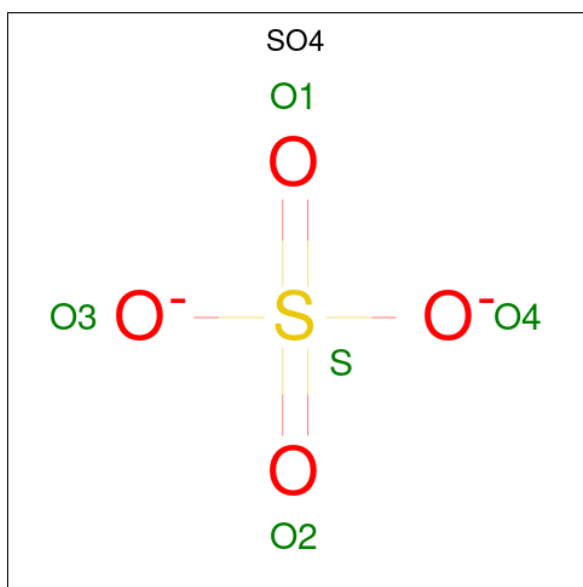
Mol	Chain	Residues	Atoms				ZeroOcc	AltConf
			Total	C	N	O		
4	G	1	Total	C	N	O	0	0
			14	8	1	5		
4	G	1	Total	C	N	O	0	0
			14	8	1	5		
4	G	1	Total	C	N	O	0	0
			14	8	1	5		
4	G	1	Total	C	N	O	0	0
			14	8	1	5		
4	G	1	Total	C	N	O	0	0
			14	8	1	5		
4	G	1	Total	C	N	O	0	0
			14	8	1	5		
4	G	1	Total	C	N	O	0	0
			14	8	1	5		
4	G	1	Total	C	N	O	0	0
			14	8	1	5		
4	G	1	Total	C	N	O	0	0
			14	8	1	5		
4	G	1	Total	C	N	O	0	0
			14	8	1	5		
4	G	1	Total	C	N	O	0	0
			14	8	1	5		

Continued on next page...

Continued from previous page...

Mol	Chain	Residues	Atoms				ZeroOcc	AltConf
			Total	C	N	O		
4	A	1	Total 14	8	1	5	0	0
4	A	1	Total 14	8	1	5	0	0
4	A	1	Total 14	8	1	5	0	0
4	A	1	Total 14	8	1	5	0	0
4	A	1	Total 14	8	1	5	0	0
4	A	1	Total 14	8	1	5	0	0
4	A	1	Total 14	8	1	5	0	0
4	A	1	Total 14	8	1	5	0	0
4	A	1	Total 14	8	1	5	0	0
4	A	1	Total 14	8	1	5	0	0
4	A	1	Total 14	8	1	5	0	0
4	A	1	Total 14	8	1	5	0	0
4	A	1	Total 14	8	1	5	0	0
4	A	1	Total 14	8	1	5	0	0
4	A	1	Total 14	8	1	5	0	0
4	A	1	Total 14	8	1	5	0	0
4	A	1	Total 14	8	1	5	0	0

- Molecule 5 is SULFATE ION (three-letter code: SO4) (formula: O₄S).



Mol	Chain	Residues	Atoms		ZeroOcc	AltConf
5	G	1	Total	O S	0	0
			5	4 1		

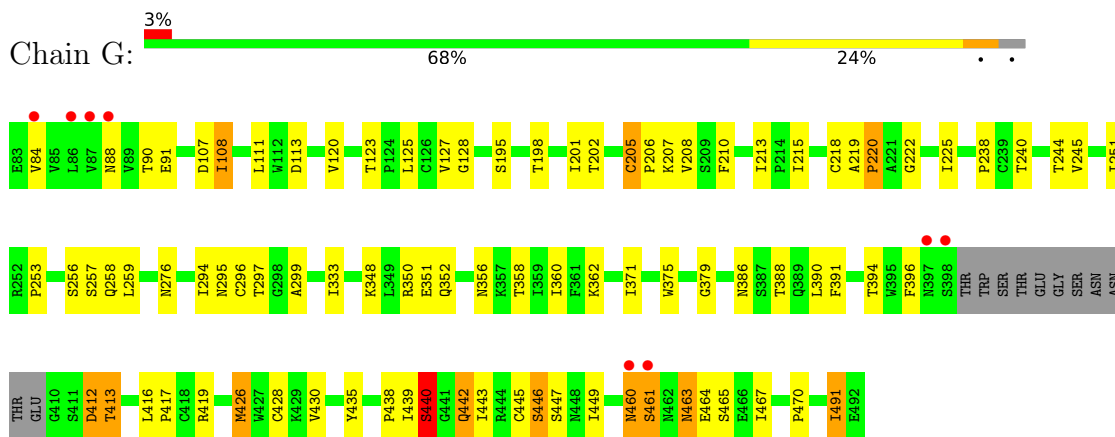
- Molecule 6 is water.

Mol	Chain	Residues	Atoms		ZeroOcc	AltConf
6	G	30	Total	O	0	0
			30	30		
6	H	12	Total	O	0	0
			12	12		
6	L	12	Total	O	0	0
			12	12		
6	A	41	Total	O	0	0
			41	41		
6	B	30	Total	O	0	0
			30	30		
6	C	27	Total	O	0	0
			27	27		

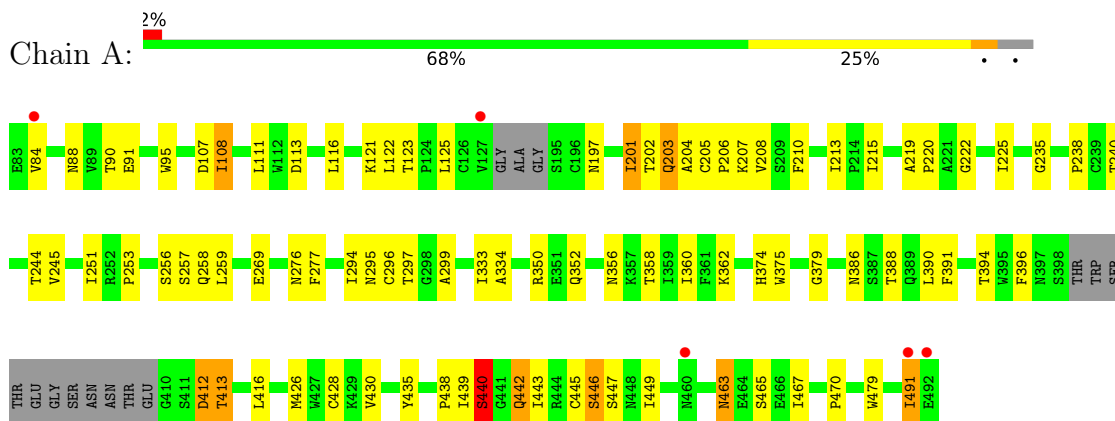
3 Residue-property plots [i](#)

These plots are drawn for all protein, RNA, DNA and oligosaccharide chains in the entry. The first graphic for a chain summarises the proportions of the various outlier classes displayed in the second graphic. The second graphic shows the sequence view annotated by issues in geometry and electron density. Residues are color-coded according to the number of geometric quality criteria for which they contain at least one outlier: green = 0, yellow = 1, orange = 2 and red = 3 or more. A red dot above a residue indicates a poor fit to the electron density ($RSRZ > 2$). Stretches of 2 or more consecutive residues without any outlier are shown as a green connector. Residues present in the sample, but not in the model, are shown in grey.

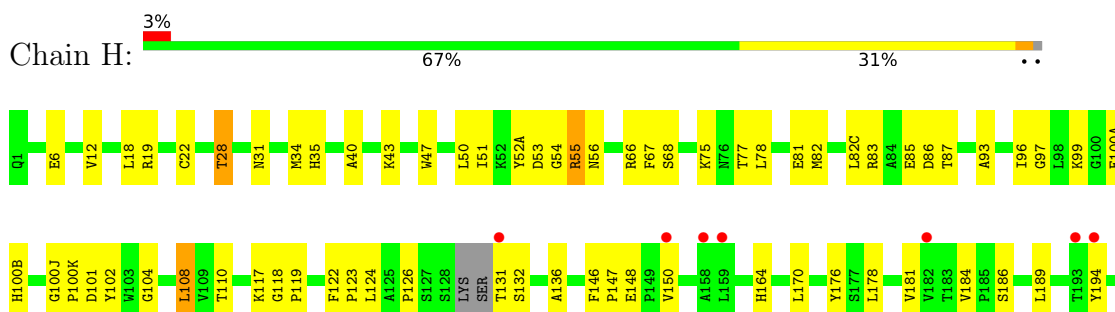
- Molecule 1: HIV-1 HxBc2 gp120 core



- Molecule 1: HIV-1 HxBc2 gp120 core

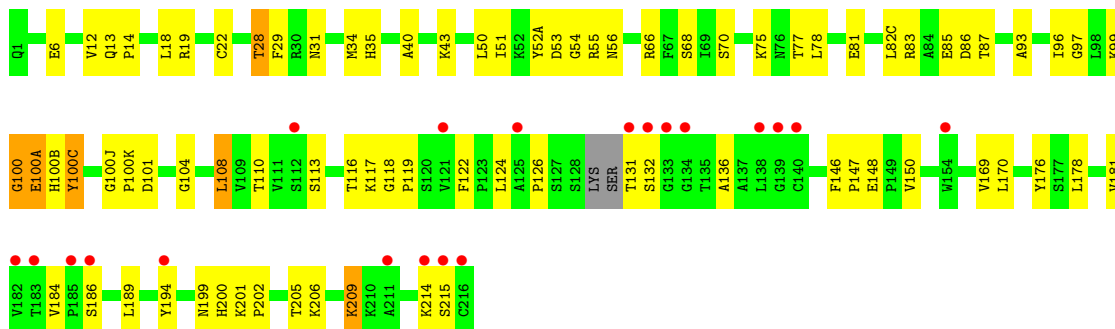


- Molecule 2: Fab b13 heavy chain

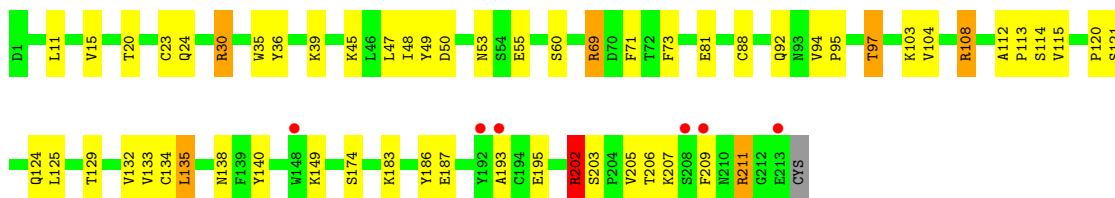
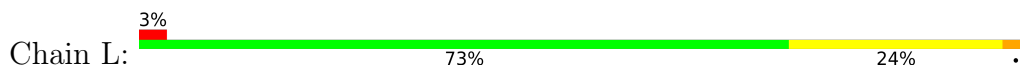




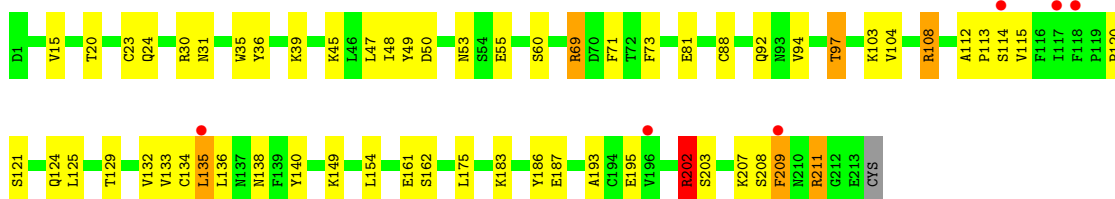
- Molecule 2: Fab b13 heavy chain



- Molecule 3: Fab b13 light chain



- Molecule 3: Fab b13 light chain



4 Data and refinement statistics

Property	Value	Source
Space group	C 2 2 21	Depositor
Cell constants a, b, c, α , β , γ	106.17Å 204.32Å 216.89Å 90.00° 90.00° 90.00°	Depositor
Resolution (Å)	43.20 – 3.20 43.20 – 2.76	Depositor EDS
% Data completeness (in resolution range)	47.1 (43.20-3.20) 61.9 (43.20-2.76)	Depositor EDS
R_{merge}	(Not available)	Depositor
R_{sym}	0.10	Depositor
$\langle I/\sigma(I) \rangle$ ¹	1.24 (at 2.77Å)	Xtrriage
Refinement program	PHENIX	Depositor
R, R_{free}	0.196 , 0.237 0.193 , 0.238	Depositor DCC
R_{free} test set	1900 reflections (5.04%)	wwPDB-VP
Wilson B-factor (Å ²)	92.9	Xtrriage
Anisotropy	0.346	Xtrriage
Bulk solvent k_{sol} (e/Å ³), B_{sol} (Å ²)	0.28 , 98.7	EDS
L-test for twinning ²	$\langle L \rangle = 0.48$, $\langle L^2 \rangle = 0.31$	Xtrriage
Estimated twinning fraction	No twinning to report.	Xtrriage
F_o, F_c correlation	0.94	EDS
Total number of atoms	12038	wwPDB-VP
Average B, all atoms (Å ²)	151.0	wwPDB-VP

Xtrriage's analysis on translational NCS is as follows: *The largest off-origin peak in the Patterson function is 2.94% of the height of the origin peak. No significant pseudotranslation is detected.*

¹Intensities estimated from amplitudes.

²Theoretical values of $\langle |L| \rangle$, $\langle L^2 \rangle$ for acentric reflections are 0.5, 0.333 respectively for untwinned datasets, and 0.375, 0.2 for perfectly twinned datasets.

5 Model quality [i](#)

5.1 Standard geometry [i](#)

Bond lengths and bond angles in the following residue types are not validated in this section: NAG, SO4

The Z score for a bond length (or angle) is the number of standard deviations the observed value is removed from the expected value. A bond length (or angle) with $|Z| > 5$ is considered an outlier worth inspection. RMSZ is the root-mean-square of all Z scores of the bond lengths (or angles).

Mol	Chain	Bond lengths		Bond angles	
		RMSZ	# Z >5	RMSZ	# Z >5
1	A	0.28	0/2401	0.45	0/3254
1	G	0.27	0/2415	0.45	0/3274
2	B	0.27	0/1771	0.44	0/2407
2	H	0.29	0/1771	0.43	0/2407
3	C	0.23	0/1688	0.43	0/2291
3	L	0.24	0/1688	0.43	0/2291
All	All	0.27	0/11734	0.44	0/15924

There are no bond length outliers.

There are no bond angle outliers.

There are no chirality outliers.

There are no planarity outliers.

5.2 Too-close contacts [i](#)

In the following table, the Non-H and H(model) columns list the number of non-hydrogen atoms and hydrogen atoms in the chain respectively. The H(added) column lists the number of hydrogen atoms added and optimized by MolProbity. The Clashes column lists the number of clashes within the asymmetric unit, whereas Symm-Clashes lists symmetry-related clashes.

Mol	Chain	Non-H	H(model)	H(added)	Clashes	Symm-Clashes
1	A	2354	0	2285	62	0
1	G	2367	0	2298	63	0
2	B	1730	0	1696	68	0
2	H	1730	0	1696	59	0
3	C	1654	0	1602	35	0
3	L	1654	0	1602	40	0
4	A	196	0	181	10	0

Continued on next page...

Continued from previous page...

Mol	Chain	Non-H	H(model)	H(added)	Clashes	Symm-Clashes
4	G	196	0	182	7	0
5	G	5	0	0	1	0
6	A	41	0	0	2	0
6	B	30	0	0	9	0
6	C	27	0	0	3	0
6	G	30	0	0	2	0
6	H	12	0	0	0	0
6	L	12	0	0	0	0
All	All	12038	0	11542	314	0

The all-atom clashscore is defined as the number of clashes found per 1000 atoms (including hydrogen atoms). The all-atom clashscore for this structure is 13.

The worst 5 of 314 close contacts within the same asymmetric unit are listed below, sorted by their clash magnitude.

Atom-1	Atom-2	Interatomic distance (Å)	Clash overlap (Å)
2:H:100(A):GLU:HG2	3:L:53:ASN:ND2	1.85	0.92
2:H:100(A):GLU:HG2	3:L:53:ASN:HD21	1.35	0.90
1:G:461:SER:CA	4:G:963:NAG:H82	2.03	0.89
1:G:388:THR:HG21	4:G:886:NAG:H5	1.54	0.88
1:G:463:ASN:HD22	1:G:464:GLU:H	1.30	0.80

There are no symmetry-related clashes.

5.3 Torsion angles [i](#)

5.3.1 Protein backbone [i](#)

In the following table, the Percentiles column shows the percent Ramachandran outliers of the chain as a percentile score with respect to all X-ray entries followed by that with respect to entries of similar resolution.

The Analysed column shows the number of residues for which the backbone conformation was analysed, and the total number of residues.

Mol	Chain	Analysed	Favoured	Allowed	Outliers	Percentiles	
1	A	297/317 (94%)	258 (87%)	32 (11%)	7 (2%)	6	34
1	G	302/317 (95%)	260 (86%)	33 (11%)	9 (3%)	4	28
2	B	225/231 (97%)	183 (81%)	35 (16%)	7 (3%)	4	26

Continued on next page...

Continued from previous page...

Mol	Chain	Analysed	Favoured	Allowed	Outliers	Percentiles	
2	H	225/231 (97%)	189 (84%)	32 (14%)	4 (2%)	8	41
3	C	212/215 (99%)	185 (87%)	24 (11%)	3 (1%)	11	46
3	L	212/215 (99%)	183 (86%)	26 (12%)	3 (1%)	11	46
All	All	1473/1526 (96%)	1258 (85%)	182 (12%)	33 (2%)	6	35

5 of 33 Ramachandran outliers are listed below:

Mol	Chain	Res	Type
1	G	440	SER
1	A	440	SER
2	B	100(A)	GLU
1	G	379	GLY
2	H	55	ARG

5.3.2 Protein sidechains [i](#)

In the following table, the Percentiles column shows the percent sidechain outliers of the chain as a percentile score with respect to all X-ray entries followed by that with respect to entries of similar resolution.

The Analysed column shows the number of residues for which the sidechain conformation was analysed, and the total number of residues.

Mol	Chain	Analysed	Rotameric	Outliers	Percentiles	
1	A	271/281 (96%)	253 (93%)	18 (7%)	16	51
1	G	271/281 (96%)	252 (93%)	19 (7%)	15	48
2	B	189/191 (99%)	186 (98%)	3 (2%)	62	84
2	H	189/191 (99%)	186 (98%)	3 (2%)	62	84
3	C	189/190 (100%)	174 (92%)	15 (8%)	12	43
3	L	189/190 (100%)	173 (92%)	16 (8%)	10	38
All	All	1298/1324 (98%)	1224 (94%)	74 (6%)	20	56

5 of 74 residues with a non-rotameric sidechain are listed below:

Mol	Chain	Res	Type
2	B	124	LEU
3	C	135	LEU
3	C	15	VAL
3	C	69	ARG

Continued on next page...

Continued from previous page...

Mol	Chain	Res	Type
3	L	30	ARG

Sometimes sidechains can be flipped to improve hydrogen bonding and reduce clashes. There are no such sidechains identified.

5.3.3 RNA [i](#)

There are no RNA molecules in this entry.

5.4 Non-standard residues in protein, DNA, RNA chains [i](#)

There are no non-standard protein/DNA/RNA residues in this entry.

5.5 Carbohydrates [i](#)

There are no monosaccharides in this entry.

5.6 Ligand geometry [i](#)

29 ligands are modelled in this entry.

In the following table, the Counts columns list the number of bonds (or angles) for which Mogul statistics could be retrieved, the number of bonds (or angles) that are observed in the model and the number of bonds (or angles) that are defined in the Chemical Component Dictionary. The Link column lists molecule types, if any, to which the group is linked. The Z score for a bond length (or angle) is the number of standard deviations the observed value is removed from the expected value. A bond length (or angle) with $|Z| > 2$ is considered an outlier worth inspection. RMSZ is the root-mean-square of all Z scores of the bond lengths (or angles).

Mol	Type	Chain	Res	Link	Bond lengths			Bond angles		
					Counts	RMSZ	# Z > 2	Counts	RMSZ	# Z > 2
4	NAG	G	776	1	14,14,15	0.46	0	17,19,21	1.05	1 (5%)
4	NAG	A	762	1	14,14,15	0.54	0	17,19,21	0.98	1 (5%)
4	NAG	A	795	1	14,14,15	0.53	0	17,19,21	0.85	1 (5%)
4	NAG	A	741	1	14,14,15	0.59	0	17,19,21	0.73	0
4	NAG	A	963	1	14,14,15	0.58	0	17,19,21	1.08	2 (11%)
4	NAG	A	839	1	14,14,15	0.55	0	17,19,21	1.05	1 (5%)
4	NAG	A	892	1	14,14,15	0.64	0	17,19,21	1.11	1 (5%)
4	NAG	G	886	1	14,14,15	0.65	0	17,19,21	1.14	1 (5%)

Mol	Type	Chain	Res	Link	Bond lengths			Bond angles		
					Counts	RMSZ	# Z > 2	Counts	RMSZ	# Z > 2
4	NAG	A	886	1	14,14,15	0.64	0	17,19,21	0.70	0
4	NAG	G	795	1	14,14,15	0.51	0	17,19,21	0.68	0
4	NAG	G	588	1	14,14,15	0.53	0	17,19,21	0.89	1 (5%)
4	NAG	G	856	1	14,14,15	0.56	0	17,19,21	1.43	3 (17%)
4	NAG	A	588	1	14,14,15	0.59	0	17,19,21	1.50	3 (17%)
4	NAG	G	892	1	14,14,15	0.58	0	17,19,21	0.97	1 (5%)
4	NAG	A	948	1	14,14,15	0.50	0	17,19,21	1.22	3 (17%)
4	NAG	A	856	1	14,14,15	0.54	0	17,19,21	1.37	1 (5%)
5	SO4	G	1003	-	4,4,4	0.13	0	6,6,6	0.09	0
4	NAG	A	776	1	14,14,15	1.26	1 (7%)	17,19,21	1.30	1 (5%)
4	NAG	G	789	1	14,14,15	0.46	0	17,19,21	0.87	0
4	NAG	G	741	1	14,14,15	0.43	0	17,19,21	0.98	1 (5%)
4	NAG	G	762	1	14,14,15	0.62	0	17,19,21	1.27	2 (11%)
4	NAG	A	730	1	14,14,15	0.53	0	17,19,21	1.00	2 (11%)
4	NAG	G	730	1	14,14,15	0.46	0	17,19,21	0.92	1 (5%)
4	NAG	G	839	1	14,14,15	0.55	0	17,19,21	1.00	1 (5%)
4	NAG	G	948	1	14,14,15	0.42	0	17,19,21	2.23	4 (23%)
4	NAG	A	789	1	14,14,15	0.52	0	17,19,21	0.81	0
4	NAG	G	963	1	14,14,15	0.50	0	17,19,21	0.83	1 (5%)
4	NAG	A	734	1	14,14,15	0.48	0	17,19,21	0.94	1 (5%)
4	NAG	G	734	1	14,14,15	0.62	0	17,19,21	1.05	1 (5%)

In the following table, the Chirals column lists the number of chiral outliers, the number of chiral centers analysed, the number of these observed in the model and the number defined in the Chemical Component Dictionary. Similar counts are reported in the Torsion and Rings columns. '-' means no outliers of that kind were identified.

Mol	Type	Chain	Res	Link	Chirals	Torsions	Rings
4	NAG	G	776	1	-	0/6/23/26	0/1/1/1
4	NAG	A	762	1	-	2/6/23/26	0/1/1/1
4	NAG	A	795	1	-	4/6/23/26	0/1/1/1
4	NAG	A	741	1	-	3/6/23/26	0/1/1/1
4	NAG	A	963	1	-	2/6/23/26	0/1/1/1
4	NAG	A	839	1	-	2/6/23/26	0/1/1/1
4	NAG	A	892	1	-	4/6/23/26	0/1/1/1
4	NAG	G	886	1	-	2/6/23/26	0/1/1/1
4	NAG	A	886	1	-	0/6/23/26	0/1/1/1

Continued on next page...

Continued from previous page...

Mol	Type	Chain	Res	Link	Chirals	Torsions	Rings
4	NAG	G	795	1	-	4/6/23/26	0/1/1/1
4	NAG	G	588	1	1/1/5/7	3/6/23/26	0/1/1/1
4	NAG	G	856	1	-	2/6/23/26	0/1/1/1
4	NAG	A	588	1	-	1/6/23/26	0/1/1/1
4	NAG	G	892	1	-	0/6/23/26	0/1/1/1
4	NAG	A	948	1	-	0/6/23/26	0/1/1/1
4	NAG	A	856	1	-	2/6/23/26	0/1/1/1
4	NAG	A	776	1	-	2/6/23/26	0/1/1/1
4	NAG	G	789	1	-	3/6/23/26	0/1/1/1
4	NAG	G	741	1	-	2/6/23/26	0/1/1/1
4	NAG	G	762	1	-	2/6/23/26	0/1/1/1
4	NAG	A	730	1	-	4/6/23/26	0/1/1/1
4	NAG	G	730	1	-	0/6/23/26	0/1/1/1
4	NAG	G	839	1	-	2/6/23/26	0/1/1/1
4	NAG	G	948	1	-	0/6/23/26	0/1/1/1
4	NAG	A	789	1	-	1/6/23/26	0/1/1/1
4	NAG	G	963	1	-	0/6/23/26	0/1/1/1
4	NAG	A	734	1	-	1/6/23/26	0/1/1/1
4	NAG	G	734	1	-	0/6/23/26	0/1/1/1

All (1) bond length outliers are listed below:

Mol	Chain	Res	Type	Atoms	Z	Observed(Å)	Ideal(Å)
4	A	776	NAG	C8-C7	-4.26	1.41	1.50

The worst 5 of 35 bond angle outliers are listed below:

Mol	Chain	Res	Type	Atoms	Z	Observed(°)	Ideal(°)
4	G	948	NAG	C1-O5-C5	6.91	121.56	112.19
4	A	856	NAG	C1-O5-C5	4.19	117.86	112.19
4	G	948	NAG	C4-C3-C2	-4.13	104.96	111.02
4	G	856	NAG	O5-C1-C2	3.66	117.07	111.29
4	G	762	NAG	C1-O5-C5	3.62	117.09	112.19

All (1) chirality outliers are listed below:

Mol	Chain	Res	Type	Atom
4	G	588	NAG	C1

5 of 48 torsion outliers are listed below:

Mol	Chain	Res	Type	Atoms
4	G	588	NAG	C3-C2-N2-C7
4	G	588	NAG	C8-C7-N2-C2
4	G	588	NAG	O7-C7-N2-C2
4	G	741	NAG	C8-C7-N2-C2
4	G	741	NAG	O7-C7-N2-C2

There are no ring outliers.

10 monomers are involved in 18 short contacts:

Mol	Chain	Res	Type	Clashes	Symm-Clashes
4	A	762	NAG	1	0
4	A	795	NAG	3	0
4	G	886	NAG	1	0
4	A	886	NAG	1	0
4	A	588	NAG	2	0
5	G	1003	SO4	1	0
4	G	762	NAG	2	0
4	A	789	NAG	2	0
4	G	963	NAG	4	0
4	A	734	NAG	1	0

5.7 Other polymers [i](#)

There are no such residues in this entry.

5.8 Polymer linkage issues [i](#)

There are no chain breaks in this entry.

6 Fit of model and data [i](#)

6.1 Protein, DNA and RNA chains [i](#)

In the following table, the column labelled ‘#RSRZ > 2’ contains the number (and percentage) of RSRZ outliers, followed by percent RSRZ outliers for the chain as percentile scores relative to all X-ray entries and entries of similar resolution. The OWAB column contains the minimum, median, 95th percentile and maximum values of the occupancy-weighted average B-factor per residue. The column labelled ‘Q < 0.9’ lists the number of (and percentage) of residues with an average occupancy less than 0.9.

Mol	Chain	Analysed	<RSRZ>	#RSRZ>2	OWAB(Å ²)	Q<0.9
1	A	303/317 (95%)	-0.20	5 (1%) 70 57	95, 125, 199, 271	0
1	G	306/317 (96%)	-0.24	8 (2%) 56 40	92, 125, 205, 271	0
2	B	229/231 (99%)	0.09	20 (8%) 10 5	100, 167, 237, 289	0
2	H	229/231 (99%)	-0.09	8 (3%) 44 28	91, 165, 234, 288	0
3	C	214/215 (99%)	-0.15	6 (2%) 53 37	104, 151, 234, 303	0
3	L	214/215 (99%)	-0.15	6 (2%) 53 37	93, 145, 232, 262	0
All	All	1495/1526 (97%)	-0.13	53 (3%) 44 28	91, 142, 231, 303	0

The worst 5 of 53 RSRZ outliers are listed below:

Mol	Chain	Res	Type	RSRZ
1	G	87	VAL	6.6
2	B	139	GLY	6.3
1	A	492	GLU	6.3
2	B	216	CYS	5.7
2	B	138	LEU	5.5

6.2 Non-standard residues in protein, DNA, RNA chains [i](#)

There are no non-standard protein/DNA/RNA residues in this entry.

6.3 Carbohydrates [i](#)

There are no monosaccharides in this entry.

6.4 Ligands [i](#)

In the following table, the Atoms column lists the number of modelled atoms in the group and the number defined in the chemical component dictionary. The B-factors column lists the minimum, median, 95th percentile and maximum values of B factors of atoms in the group. The column labelled 'Q< 0.9' lists the number of atoms with occupancy less than 0.9.

Mol	Type	Chain	Res	Atoms	RSCC	RSR	B-factors(Å ²)	Q<0.9
4	NAG	G	856	14/15	-0.08	1.43	184,252,279,292	0
4	NAG	A	856	14/15	0.04	0.61	170,250,287,291	0
4	NAG	G	588	14/15	0.42	0.79	187,247,265,266	0
4	NAG	A	730	14/15	0.57	0.33	180,212,233,238	0
4	NAG	A	963	14/15	0.63	0.73	170,225,242,246	0
4	NAG	A	588	14/15	0.73	0.43	143,206,225,236	0
4	NAG	A	839	14/15	0.76	0.55	131,213,220,222	0
4	NAG	G	730	14/15	0.78	0.22	158,229,236,237	0
4	NAG	G	963	14/15	0.81	0.49	211,229,239,241	0
4	NAG	A	776	14/15	0.84	0.26	133,183,194,197	0
4	NAG	G	741	14/15	0.84	0.21	146,204,232,238	0
4	NAG	A	741	14/15	0.85	0.22	113,213,241,245	0
4	NAG	A	734	14/15	0.86	0.18	165,188,209,216	0
4	NAG	G	948	14/15	0.86	0.26	86,148,198,201	0
4	NAG	G	839	14/15	0.87	0.27	153,188,211,216	0
4	NAG	G	734	14/15	0.88	0.20	158,195,210,225	0
4	NAG	A	892	14/15	0.89	0.30	132,192,205,212	0
5	SO4	G	1003	5/5	0.89	0.16	162,173,190,220	0
4	NAG	G	892	14/15	0.90	0.14	118,177,197,209	0
4	NAG	G	776	14/15	0.92	0.17	151,175,183,195	0
4	NAG	A	948	14/15	0.92	0.22	117,140,165,165	0
4	NAG	A	795	14/15	0.93	0.18	120,152,170,189	0
4	NAG	G	789	14/15	0.93	0.19	108,146,178,179	0
4	NAG	G	795	14/15	0.93	0.20	124,161,166,195	0
4	NAG	A	886	14/15	0.93	0.20	113,154,172,179	0
4	NAG	G	886	14/15	0.94	0.15	109,142,159,171	0
4	NAG	A	762	14/15	0.95	0.26	77,94,125,144	0
4	NAG	A	789	14/15	0.95	0.15	112,128,141,152	0
4	NAG	G	762	14/15	0.96	0.17	76,96,128,130	0

6.5 Other polymers [i](#)

There are no such residues in this entry.