



Full wwPDB X-ray Structure Validation Report ⓘ

Oct 24, 2023 – 09:28 PM EDT

PDB ID : 3H67
Title : Catalytic domain of human Serine/Threonine Phosphatase 5 (PP5c) with two Zn²⁺ atoms complexed with cantharidic acid
Authors : Bertini, I.; Calderone, V.; Fragai, M.; Luchinat, C.; Talluri, E.
Deposited on : 2009-04-23
Resolution : 1.65 Å (reported)

This is a Full wwPDB X-ray Structure Validation Report for a publicly released PDB entry.

We welcome your comments at validation@mail.wwpdb.org

A user guide is available at

<https://www.wwpdb.org/validation/2017/XrayValidationReportHelp>

with specific help available everywhere you see the ⓘ symbol.

The types of validation reports are described at

<http://www.wwpdb.org/validation/2017/FAQs#types>.

The following versions of software and data (see [references ⓘ](#)) were used in the production of this report:

MolProbity : 4.02b-467
Mogul : 1.8.5 (274361), CSD as541be (2020)
Xtriage (Phenix) : 1.13
EDS : 2.36
Percentile statistics : 20191225.v01 (using entries in the PDB archive December 25th 2019)
Refmac : 5.8.0158
CCP4 : 7.0.044 (Gargrove)
Ideal geometry (proteins) : Engh & Huber (2001)
Ideal geometry (DNA, RNA) : Parkinson et al. (1996)
Validation Pipeline (wwPDB-VP) : 2.36

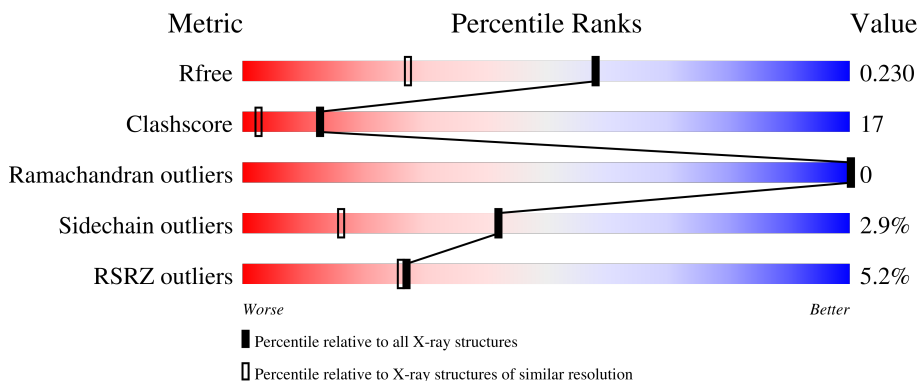
1 Overall quality at a glance

The following experimental techniques were used to determine the structure:

X-RAY DIFFRACTION

The reported resolution of this entry is 1.65 Å.

Percentile scores (ranging between 0-100) for global validation metrics of the entry are shown in the following graphic. The table shows the number of entries on which the scores are based.



Metric	Whole archive (#Entries)	Similar resolution (#Entries, resolution range(Å))
R_{free}	130704	1827 (1.66-1.66)
Clashscore	141614	1931 (1.66-1.66)
Ramachandran outliers	138981	1891 (1.66-1.66)
Sidechain outliers	138945	1891 (1.66-1.66)
RSRZ outliers	127900	1791 (1.66-1.66)

The table below summarises the geometric issues observed across the polymeric chains and their fit to the electron density. The red, orange, yellow and green segments of the lower bar indicate the fraction of residues that contain outliers for ≥ 3 , 2, 1 and 0 types of geometric quality criteria respectively. A grey segment represents the fraction of residues that are not modelled. The numeric value for each fraction is indicated below the corresponding segment, with a dot representing fractions $\leq 5\%$. The upper red bar (where present) indicates the fraction of residues that have poor fit to the electron density. The numeric value is given above the bar.

Mol	Chain	Length	Quality of chain
1	A	315	 9% 85% 12% .
1	D	315	 9% 84% 14% .

The following table lists non-polymeric compounds, carbohydrate monomers and non-standard residues in protein, DNA, RNA chains that are outliers for geometric or electron-density-fit criteria:

Mol	Type	Chain	Res	Chirality	Geometry	Clashes	Electron density
3	NHC	A	1[B]	-	-	X	-
3	NHC	D	1[B]	-	-	X	-

2 Entry composition [i](#)

There are 4 unique types of molecules in this entry. The entry contains 5671 atoms, of which 0 are hydrogens and 0 are deuteriums.

In the tables below, the ZeroOcc column contains the number of atoms modelled with zero occupancy, the AltConf column contains the number of residues with at least one atom in alternate conformation and the Trace column contains the number of residues modelled with at most 2 atoms.

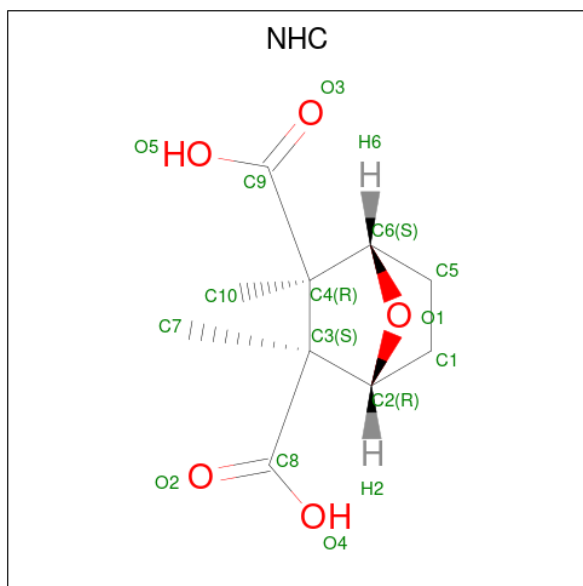
- Molecule 1 is a protein called Serine/threonine-protein phosphatase 5.

Mol	Chain	Residues	Atoms					ZeroOcc	AltConf	Trace
			Total	C	N	O	S			
1	A	315	Total 2531	C 1616	N 427	O 473	S 15	0	1	0
1	D	315	Total 2531	C 1616	N 427	O 473	S 15	0	1	0

- Molecule 2 is ZINC ION (three-letter code: ZN) (formula: Zn).

Mol	Chain	Residues	Atoms		ZeroOcc	AltConf
2	A	2	Total 2	Zn 2	0	0
2	D	2	Total 2	Zn 2	0	0

- Molecule 3 is (1R,2S,3R,4S)-2,3-dimethyl-7-oxabicyclo[2.2.1]heptane-2,3-dicarboxylic acid (three-letter code: NHC) (formula: C₁₀H₁₄O₅).



Mol	Chain	Residues	Atoms			ZeroOcc	AltConf
3	A	1	Total	C	O	0	1
			30	20	10		
3	D	1	Total	C	O	0	1
			30	20	10		

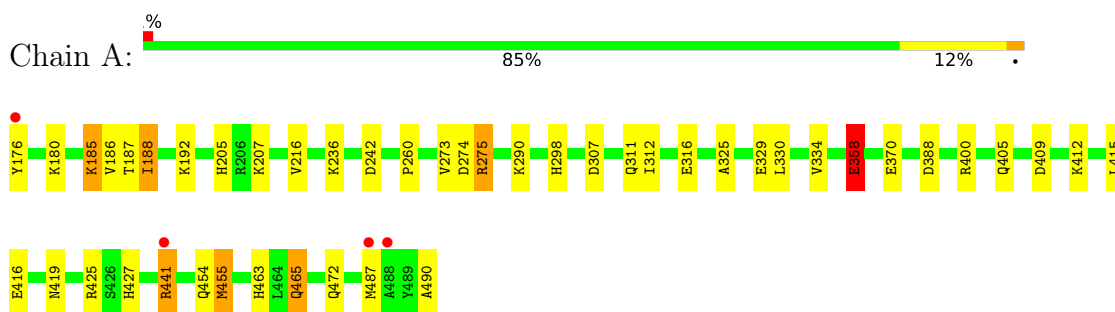
- Molecule 4 is water.

Mol	Chain	Residues	Atoms		ZeroOcc	AltConf
4	A	344	Total	O	0	0
			344	344		
4	D	201	Total	O	0	0
			201	201		

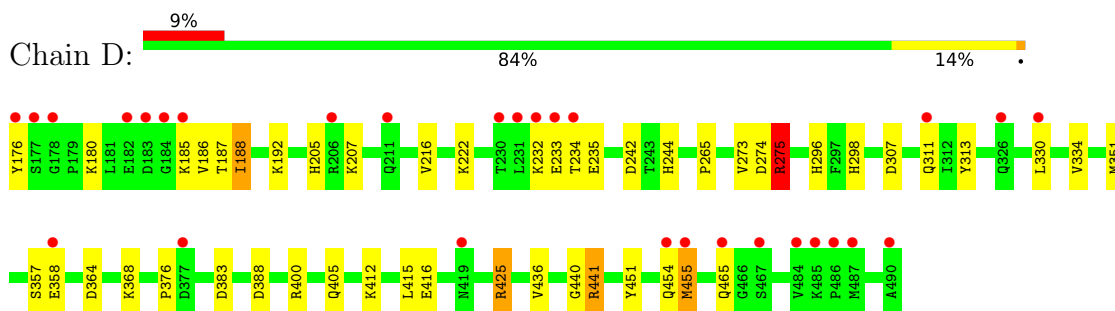
3 Residue-property plots [i](#)

These plots are drawn for all protein, RNA, DNA and oligosaccharide chains in the entry. The first graphic for a chain summarises the proportions of the various outlier classes displayed in the second graphic. The second graphic shows the sequence view annotated by issues in geometry and electron density. Residues are color-coded according to the number of geometric quality criteria for which they contain at least one outlier: green = 0, yellow = 1, orange = 2 and red = 3 or more. A red dot above a residue indicates a poor fit to the electron density ($RSRZ > 2$). Stretches of 2 or more consecutive residues without any outlier are shown as a green connector. Residues present in the sample, but not in the model, are shown in grey.

- Molecule 1: Serine/threonine-protein phosphatase 5



- Molecule 1: Serine/threonine-protein phosphatase 5



4 Data and refinement statistics

Property	Value	Source
Space group	C 1 2 1	Depositor
Cell constants a, b, c, α , β , γ	158.88Å 41.77Å 104.99Å 90.00° 96.96° 90.00°	Depositor
Resolution (Å)	39.44 – 1.65 39.43 – 1.65	Depositor EDS
% Data completeness (in resolution range)	100.0 (39.44-1.65) 96.2 (39.43-1.65)	Depositor EDS
R_{merge}	0.09	Depositor
R_{sym}	0.09	Depositor
$\langle I/\sigma(I) \rangle$ ¹	2.11 (at 1.65Å)	Xtrriage
Refinement program	REFMAC 5.4.0067	Depositor
R, R_{free}	0.181 , 0.231 0.179 , 0.230	Depositor DCC
R_{free} test set	7316 reflections (9.16%)	wwPDB-VP
Wilson B-factor (Å ²)	17.6	Xtrriage
Anisotropy	0.359	Xtrriage
Bulk solvent k_{sol} (e/Å ³), B_{sol} (Å ²)	0.35 , 60.8	EDS
L-test for twinning ²	$\langle L \rangle = 0.44$, $\langle L^2 \rangle = 0.27$	Xtrriage
Estimated twinning fraction	No twinning to report.	Xtrriage
F_o, F_c correlation	0.96	EDS
Total number of atoms	5671	wwPDB-VP
Average B, all atoms (Å ²)	22.0	wwPDB-VP

Xtrriage's analysis on translational NCS is as follows: *The largest off-origin peak in the Patterson function is 7.28% of the height of the origin peak. No significant pseudotranslation is detected.*

¹Intensities estimated from amplitudes.

²Theoretical values of $\langle |L| \rangle$, $\langle L^2 \rangle$ for acentric reflections are 0.5, 0.333 respectively for untwinned datasets, and 0.375, 0.2 for perfectly twinned datasets.

5 Model quality i

5.1 Standard geometry i

Bond lengths and bond angles in the following residue types are not validated in this section: ZN, NHC

The Z score for a bond length (or angle) is the number of standard deviations the observed value is removed from the expected value. A bond length (or angle) with $|Z| > 5$ is considered an outlier worth inspection. RMSZ is the root-mean-square of all Z scores of the bond lengths (or angles).

Mol	Chain	Bond lengths		Bond angles	
		RMSZ	# $ Z > 5$	RMSZ	# $ Z > 5$
1	A	0.98	1/2603 (0.0%)	0.88	4/3520 (0.1%)
1	D	0.67	0/2603	0.76	5/3520 (0.1%)
All	All	0.84	1/5206 (0.0%)	0.82	9/7040 (0.1%)

Chiral center outliers are detected by calculating the chiral volume of a chiral center and verifying if the center is modelled as a planar moiety or with the opposite hand. A planarity outlier is detected by checking planarity of atoms in a peptide group, atoms in a mainchain group or atoms of a sidechain that are expected to be planar.

Mol	Chain	#Chirality outliers	#Planarity outliers
1	A	0	2
1	D	0	2
All	All	0	4

All (1) bond length outliers are listed below:

Mol	Chain	Res	Type	Atoms	Z	Observed(Å)	Ideal(Å)
1	A	358	GLU	CG-CD	6.97	1.62	1.51

All (9) bond angle outliers are listed below:

Mol	Chain	Res	Type	Atoms	Z	Observed(°)	Ideal(°)
1	A	441	ARG	NE-CZ-NH2	-13.79	113.40	120.30
1	D	441	ARG	NE-CZ-NH2	-11.95	114.32	120.30
1	A	441	ARG	NE-CZ-NH1	10.90	125.75	120.30
1	D	441	ARG	NE-CZ-NH1	8.98	124.79	120.30
1	D	275[A]	ARG	NE-CZ-NH2	7.58	124.09	120.30
1	D	275[B]	ARG	NE-CZ-NH2	7.58	124.09	120.30
1	A	409	ASP	CB-CG-OD1	5.88	123.59	118.30
1	D	383	ASP	CB-CG-OD1	5.21	122.99	118.30

Continued on next page...

Continued from previous page...

Mol	Chain	Res	Type	Atoms	Z	Observed(°)	Ideal(°)
1	A	312	ILE	CB-CA-C	-5.05	101.50	111.60

There are no chirality outliers.

All (4) planarity outliers are listed below:

Mol	Chain	Res	Type	Group
1	A	275[A]	ARG	Sidechain
1	A	275[B]	ARG	Sidechain
1	D	275[A]	ARG	Sidechain
1	D	275[B]	ARG	Sidechain

5.2 Too-close contacts [i](#)

In the following table, the Non-H and H(model) columns list the number of non-hydrogen atoms and hydrogen atoms in the chain respectively. The H(added) column lists the number of hydrogen atoms added and optimized by MolProbity. The Clashes column lists the number of clashes within the asymmetric unit, whereas Symm-Clashes lists symmetry-related clashes.

Mol	Chain	Non-H	H(model)	H(added)	Clashes	Symm-Clashes
1	A	2531	0	2459	83	0
1	D	2531	0	2459	76	0
2	A	2	0	0	0	0
2	D	2	0	0	0	0
3	A	30	0	24	18	0
3	D	30	0	24	19	0
4	A	344	0	0	19	0
4	D	201	0	0	8	2
All	All	5671	0	4966	168	2

The all-atom clashscore is defined as the number of clashes found per 1000 atoms (including hydrogen atoms). The all-atom clashscore for this structure is 17.

All (168) close contacts within the same asymmetric unit are listed below, sorted by their clash magnitude.

Atom-1	Atom-2	Interatomic distance (Å)	Clash overlap (Å)
1:A:275[B]:ARG:NH1	3:A:1[B]:NHC:H7B	1.33	1.40
1:A:455:MET:HA	1:A:455:MET:CE	1.59	1.33
1:D:176:TYR:CE2	1:D:180:LYS:HE2	1.68	1.27
1:A:441:ARG:HG3	4:A:497:HOH:O	1.10	1.26

Continued on next page...

Continued from previous page...

Atom-1	Atom-2	Interatomic distance (Å)	Clash overlap (Å)
1:A:188:ILE:HG12	4:A:533:HOH:O	1.36	1.25
1:A:176:TYR:CE2	1:A:180:LYS:HE2	1.74	1.23
1:A:275[B]:ARG:HH12	3:A:1[B]:NHC:C7	1.58	1.16
1:D:455:MET:HA	1:D:455:MET:CE	1.76	1.14
1:A:307:ASP:O	1:A:311:GLN:HG2	1.46	1.13
1:A:455:MET:HE1	1:D:454:GLN:HG2	1.32	1.09
3:D:1[A]:NHC:O5	3:D:1[A]:NHC:C8	1.99	1.09
1:D:176:TYR:HE2	1:D:180:LYS:HE2	1.04	1.03
1:A:416:GLU:HG3	4:A:496:HOH:O	1.58	1.03
1:A:487:MET:HG3	1:A:490:ALA:HB3	1.42	1.02
1:A:275[B]:ARG:NH1	3:A:1[B]:NHC:C7	2.18	1.01
1:D:455:MET:HA	1:D:455:MET:HE2	1.39	1.01
1:A:311:GLN:HG3	4:A:652:HOH:O	1.59	1.00
1:A:188:ILE:HD11	1:A:192:LYS:HE3	1.42	0.99
3:A:1[A]:NHC:C9	3:A:1[A]:NHC:O2	2.10	0.97
1:A:275[B]:ARG:HH12	3:A:1[B]:NHC:C3	1.76	0.97
1:A:455:MET:HE2	1:A:455:MET:CA	1.95	0.97
1:A:455:MET:HA	1:A:455:MET:HE2	0.98	0.96
3:D:1[A]:NHC:C9	3:D:1[A]:NHC:O2	2.12	0.95
1:A:455:MET:CE	1:A:455:MET:CA	2.45	0.94
1:D:307:ASP:O	1:D:311:GLN:HG2	1.68	0.94
1:A:275[B]:ARG:HH11	3:A:1[B]:NHC:H7B	1.28	0.93
1:A:205:HIS:HD2	1:A:207:LYS:H	1.16	0.92
1:A:176:TYR:HE2	1:A:180:LYS:HE2	1.12	0.92
3:A:1[B]:NHC:O4	3:A:1[B]:NHC:O5	1.89	0.90
1:D:357:SER:HB3	4:D:567:HOH:O	0.73	0.90
1:A:487:MET:HG3	1:A:490:ALA:CB	2.01	0.90
1:D:275[B]:ARG:NH1	3:D:1[B]:NHC:H7B	1.87	0.89
1:D:455:MET:HA	1:D:455:MET:HE3	1.53	0.88
1:A:185:LYS:HE2	1:A:187:THR:HG22	1.52	0.88
1:D:188:ILE:HD11	1:D:192:LYS:HE3	1.53	0.88
1:A:185:LYS:HE3	1:A:186:VAL:O	1.74	0.88
1:A:188:ILE:HD11	1:A:192:LYS:CE	2.06	0.85
1:D:176:TYR:CD2	1:D:180:LYS:HE2	2.13	0.83
1:D:275[B]:ARG:HH12	3:D:1[B]:NHC:C2	1.91	0.83
1:A:275[B]:ARG:HH12	3:A:1[B]:NHC:H7B	1.06	0.83
1:D:455:MET:CE	1:D:455:MET:CA	2.55	0.82
1:A:176:TYR:CE2	1:A:180:LYS:CE	2.61	0.82
1:A:275[B]:ARG:NH2	3:A:1[B]:NHC:O2	2.14	0.81
1:D:441:ARG:HG3	4:D:61:HOH:O	1.79	0.80
1:D:176:TYR:CE2	1:D:180:LYS:CE	2.60	0.79

Continued on next page...

Continued from previous page...

Atom-1	Atom-2	Interatomic distance (Å)	Clash overlap (Å)
1:D:205:HIS:HD2	1:D:207:LYS:H	1.30	0.79
1:A:455:MET:CE	1:D:454:GLN:HG2	2.10	0.78
1:D:275[B]:ARG:HH12	3:D:1[B]:NHC:H2	1.48	0.77
1:A:188:ILE:HD13	1:A:188:ILE:O	1.83	0.77
1:A:205:HIS:CD2	1:A:207:LYS:H	2.03	0.75
1:A:455:MET:HE1	1:D:454:GLN:CG	2.12	0.75
3:D:1[A]:NHC:O5	3:D:1[A]:NHC:O2	2.04	0.74
1:A:185:LYS:HD3	4:A:514:HOH:O	1.88	0.74
1:D:176:TYR:CD2	1:D:180:LYS:CE	2.70	0.73
1:D:455:MET:HE3	1:D:455:MET:CA	2.17	0.73
3:A:1[B]:NHC:O4	3:A:1[B]:NHC:C9	2.34	0.71
1:A:412:LYS:NZ	1:A:416:GLU:OE2	2.23	0.71
3:A:1[A]:NHC:O5	3:A:1[A]:NHC:C8	2.36	0.71
1:D:416:GLU:HG3	4:D:581:HOH:O	1.92	0.70
1:D:205:HIS:CD2	1:D:207:LYS:H	2.09	0.70
1:A:185:LYS:CE	1:A:187:THR:HG22	2.20	0.70
1:A:275[B]:ARG:HH12	3:A:1[B]:NHC:C8	2.05	0.69
1:D:412:LYS:NZ	1:D:416:GLU:OE2	2.24	0.69
1:A:370:GLU:OE2	4:A:711:HOH:O	2.09	0.69
1:A:311:GLN:OE1	1:A:316:GLU:CD	2.32	0.69
1:D:441:ARG:NH2	4:D:581:HOH:O	2.26	0.69
1:D:415:LEU:CD1	1:D:441:ARG:HD2	2.24	0.67
1:D:188:ILE:CD1	1:D:192:LYS:HE3	2.24	0.66
1:A:176:TYR:CD2	1:A:180:LYS:HE2	2.28	0.66
1:A:307:ASP:HB3	1:A:311:GLN:HE21	1.61	0.66
1:A:185:LYS:HG2	1:A:186:VAL:N	2.10	0.65
3:A:1[A]:NHC:O2	3:A:1[A]:NHC:O5	2.15	0.65
1:D:275[B]:ARG:HH12	3:D:1[B]:NHC:C3	2.10	0.64
1:A:176:TYR:CD2	1:A:180:LYS:CE	2.80	0.64
1:A:188:ILE:HD13	1:A:188:ILE:C	2.18	0.63
1:D:415:LEU:HD13	1:D:441:ARG:HD2	1.80	0.63
1:A:311:GLN:OE1	1:A:316:GLU:OE1	2.18	0.61
1:D:185:LYS:HE3	1:D:187:THR:HG22	1.80	0.61
1:D:400:ARG:HH12	3:D:1[B]:NHC:H10A	1.65	0.61
3:D:1[B]:NHC:C8	3:D:1[B]:NHC:O5	2.46	0.60
1:D:185:LYS:HE3	1:D:186:VAL:O	2.02	0.59
1:A:415:LEU:CD1	1:A:441:ARG:HD2	2.32	0.59
1:D:275[B]:ARG:HH12	3:D:1[B]:NHC:H7B	1.64	0.58
1:D:376:PRO:HG2	4:D:534:HOH:O	2.02	0.58
1:D:275[B]:ARG:HH12	3:D:1[B]:NHC:C7	2.16	0.58
1:A:415:LEU:HD13	1:A:441:ARG:HD2	1.86	0.58

Continued on next page...

Continued from previous page...

Atom-1	Atom-2	Interatomic distance (Å)	Clash overlap (Å)
1:A:370:GLU:OE1	4:A:522:HOH:O	2.17	0.58
1:D:275[B]:ARG:NH1	3:D:1[B]:NHC:C7	2.65	0.57
1:A:465:GLN:HE21	1:A:472:GLN:HE22	1.54	0.56
1:D:364:ASP:OD2	1:D:368:LYS:NZ	2.34	0.56
1:A:273:VAL:O	1:A:274:ASP:HB2	2.06	0.56
1:A:298:HIS:HD2	4:A:19:HOH:O	1.89	0.55
1:D:188:ILE:CD1	1:D:192:LYS:CE	2.85	0.55
1:A:455:MET:HA	1:A:455:MET:HE3	1.77	0.54
1:A:188:ILE:CD1	1:A:192:LYS:HD2	2.37	0.54
1:A:330:LEU:O	1:A:334:VAL:HG23	2.08	0.54
1:D:232:LYS:HB2	1:D:235:GLU:HG3	1.89	0.54
1:D:176:TYR:HD2	1:D:180:LYS:CE	2.20	0.53
1:D:455:MET:HE2	1:D:455:MET:CA	2.25	0.53
1:A:388:ASP:O	1:A:405:GLN:HA	2.09	0.53
1:A:465:GLN:NE2	1:A:472:GLN:HE22	2.07	0.52
1:A:455:MET:CA	1:A:455:MET:HE3	2.37	0.52
1:D:244:HIS:CE1	1:D:275[B]:ARG:NH2	2.78	0.52
1:A:185:LYS:HE2	1:A:187:THR:CG2	2.34	0.51
1:A:185:LYS:CD	4:A:514:HOH:O	2.52	0.51
1:D:265:PRO:HB3	1:D:296:HIS:HB3	1.93	0.51
1:D:275[B]:ARG:NH1	3:D:1[B]:NHC:H2	2.20	0.51
1:D:412:LYS:HG3	4:D:581:HOH:O	2.11	0.51
1:D:188:ILE:HD13	1:D:188:ILE:O	2.10	0.51
1:A:325:ALA:O	1:A:329:GLU:HG2	2.11	0.50
1:A:419:ASN:HB2	4:A:559:HOH:O	2.12	0.50
1:D:185:LYS:HG2	1:D:186:VAL:N	2.25	0.50
1:A:441:ARG:NH2	4:A:496:HOH:O	2.44	0.50
1:D:400:ARG:HH22	3:D:1[B]:NHC:H10	1.77	0.50
1:A:454:GLN:CD	1:D:455:MET:HE1	2.33	0.49
1:A:275[B]:ARG:NH1	3:A:1[B]:NHC:C8	2.73	0.49
1:A:188:ILE:HD11	1:A:192:LYS:CD	2.43	0.48
1:D:307:ASP:HB3	1:D:311:GLN:HE21	1.78	0.48
1:D:188:ILE:HD11	1:D:192:LYS:CE	2.33	0.48
1:D:244:HIS:CE1	1:D:275[B]:ARG:HH22	2.32	0.48
1:D:275[A]:ARG:NH1	1:D:313:TYR:CE1	2.82	0.48
1:D:351:MET:O	1:D:425:ARG:HA	2.14	0.47
4:A:689:HOH:O	1:D:454:GLN:HB3	2.13	0.47
3:D:1[B]:NHC:H10B	3:D:1[B]:NHC:H5	1.66	0.47
1:D:222:LYS:HE2	4:D:598:HOH:O	2.15	0.47
1:A:416:GLU:HG2	4:A:527:HOH:O	2.15	0.47
1:D:185:LYS:CE	1:D:187:THR:HG22	2.45	0.46

Continued on next page...

Continued from previous page...

Atom-1	Atom-2	Interatomic distance (Å)	Clash overlap (Å)
1:D:233:GLU:HG3	1:D:234:THR:HG23	1.97	0.46
1:D:273:VAL:O	1:D:274:ASP:HB2	2.15	0.46
1:A:298:HIS:HE1	4:A:89:HOH:O	1.98	0.46
3:D:1[A]:NHC:H10B	3:D:1[A]:NHC:H5	1.63	0.46
1:D:232:LYS:HD2	1:D:235:GLU:OE2	2.17	0.45
1:D:298:HIS:HE1	4:D:513:HOH:O	1.99	0.45
1:A:275[B]:ARG:HH12	3:A:1[B]:NHC:C2	2.29	0.45
1:D:275[B]:ARG:HH11	3:D:1[B]:NHC:H7B	1.72	0.45
1:A:236:LYS:HZ3	1:A:463:HIS:CE1	2.35	0.45
3:D:1[B]:NHC:H1	3:D:1[B]:NHC:H7	1.51	0.44
1:A:188:ILE:HD12	4:A:612:HOH:O	2.17	0.44
1:A:454:GLN:OE1	1:D:455:MET:HE1	2.16	0.44
1:D:176:TYR:CZ	1:D:205:HIS:HB2	2.52	0.44
1:A:427:HIS:O	3:A:1[B]:NHC:H10	2.18	0.44
1:A:400:ARG:HH12	3:A:1[B]:NHC:H10A	1.83	0.44
3:A:1[A]:NHC:H1	3:A:1[A]:NHC:H7	1.58	0.44
1:A:358:GLU:CD	4:A:710:HOH:O	2.56	0.43
1:D:275[B]:ARG:NH1	1:D:451:TYR:OH	2.52	0.43
1:D:455:MET:HE3	1:D:455:MET:N	2.33	0.43
1:A:487:MET:HG3	1:A:490:ALA:HB2	1.94	0.43
1:D:436:VAL:CG1	1:D:440:GLY:HA2	2.49	0.43
1:D:185:LYS:HG2	1:D:186:VAL:O	2.18	0.43
1:A:188:ILE:CD1	1:A:192:LYS:CD	2.97	0.42
1:A:329:GLU:OE2	4:A:686:HOH:O	2.22	0.42
1:D:388:ASP:O	1:D:405:GLN:HA	2.19	0.42
1:A:236:LYS:NZ	1:A:463:HIS:CE1	2.88	0.42
3:D:1[A]:NHC:H1	3:D:1[A]:NHC:H7	1.73	0.42
1:A:405:GLN:NE2	4:A:672:HOH:O	2.28	0.42
1:A:260:PRO:HB3	4:A:688:HOH:O	2.20	0.41
1:D:330:LEU:O	1:D:334:VAL:HG23	2.20	0.41
1:A:415:LEU:CD1	1:A:441:ARG:CD	2.99	0.40

All (2) symmetry-related close contacts are listed below. The label for Atom-2 includes the symmetry operator and encoded unit-cell translations to be applied.

Atom-1	Atom-2	Interatomic distance (Å)	Clash overlap (Å)
4:D:15:HOH:O	4:D:93:HOH:O[4_555]	2.15	0.05
4:D:61:HOH:O	4:D:174:HOH:O[4_555]	2.16	0.04

5.3 Torsion angles [i](#)

5.3.1 Protein backbone [i](#)

In the following table, the Percentiles column shows the percent Ramachandran outliers of the chain as a percentile score with respect to all X-ray entries followed by that with respect to entries of similar resolution.

The Analysed column shows the number of residues for which the backbone conformation was analysed, and the total number of residues.

Mol	Chain	Analysed	Favoured	Allowed	Outliers	Percentiles	
1	A	314/315 (100%)	303 (96%)	11 (4%)	0	100	100
1	D	314/315 (100%)	302 (96%)	12 (4%)	0	100	100
All	All	628/630 (100%)	605 (96%)	23 (4%)	0	100	100

There are no Ramachandran outliers to report.

5.3.2 Protein sidechains [i](#)

In the following table, the Percentiles column shows the percent sidechain outliers of the chain as a percentile score with respect to all X-ray entries followed by that with respect to entries of similar resolution.

The Analysed column shows the number of residues for which the sidechain conformation was analysed, and the total number of residues.

Mol	Chain	Analysed	Rotameric	Outliers	Percentiles	
1	A	280/279 (100%)	271 (97%)	9 (3%)	39	13
1	D	280/279 (100%)	273 (98%)	7 (2%)	47	22
All	All	560/558 (100%)	544 (97%)	16 (3%)	42	16

All (16) residues with a non-rotameric sidechain are listed below:

Mol	Chain	Res	Type
1	A	185	LYS
1	A	188	ILE
1	A	216	VAL
1	A	242	ASP
1	A	290	LYS
1	A	358	GLU
1	A	425	ARG
1	A	455	MET

Continued on next page...

Continued from previous page...

Mol	Chain	Res	Type
1	A	465	GLN
1	D	188	ILE
1	D	216	VAL
1	D	242	ASP
1	D	358	GLU
1	D	425	ARG
1	D	455	MET
1	D	465	GLN

Sometimes sidechains can be flipped to improve hydrogen bonding and reduce clashes. All (13) such sidechains are listed below:

Mol	Chain	Res	Type
1	A	205	HIS
1	A	264	ASN
1	A	298	HIS
1	A	311	GLN
1	A	419	ASN
1	A	465	GLN
1	A	474	HIS
1	D	205	HIS
1	D	264	ASN
1	D	298	HIS
1	D	405	GLN
1	D	419	ASN
1	D	472	GLN

5.3.3 RNA [i](#)

There are no RNA molecules in this entry.

5.4 Non-standard residues in protein, DNA, RNA chains [i](#)

There are no non-standard protein/DNA/RNA residues in this entry.

5.5 Carbohydrates [i](#)

There are no monosaccharides in this entry.

5.6 Ligand geometry

Of 8 ligands modelled in this entry, 4 are monoatomic - leaving 4 for Mogul analysis.

In the following table, the Counts columns list the number of bonds (or angles) for which Mogul statistics could be retrieved, the number of bonds (or angles) that are observed in the model and the number of bonds (or angles) that are defined in the Chemical Component Dictionary. The Link column lists molecule types, if any, to which the group is linked. The Z score for a bond length (or angle) is the number of standard deviations the observed value is removed from the expected value. A bond length (or angle) with $|Z| > 2$ is considered an outlier worth inspection. RMSZ is the root-mean-square of all Z scores of the bond lengths (or angles).

Mol	Type	Chain	Res	Link	Bond lengths			Bond angles		
					Counts	RMSZ	# Z > 2	Counts	RMSZ	# Z > 2
3	NHC	D	1[A]	2	16,16,16	1.21	2 (12%)	17,27,27	1.73	5 (29%)
3	NHC	A	1[B]	2	16,16,16	1.35	3 (18%)	17,27,27	1.30	2 (11%)
3	NHC	A	1[A]	2	16,16,16	1.25	2 (12%)	17,27,27	1.94	3 (17%)
3	NHC	D	1[B]	2	16,16,16	1.48	3 (18%)	17,27,27	1.64	4 (23%)

In the following table, the Chirals column lists the number of chiral outliers, the number of chiral centers analysed, the number of these observed in the model and the number defined in the Chemical Component Dictionary. Similar counts are reported in the Torsion and Rings columns. '-' means no outliers of that kind were identified.

Mol	Type	Chain	Res	Link	Chirals	Torsions	Rings
3	NHC	D	1[A]	2	-	3/12/42/42	0/3/2/2
3	NHC	A	1[B]	2	-	0/12/42/42	0/3/2/2
3	NHC	A	1[A]	2	-	2/12/42/42	0/3/2/2
3	NHC	D	1[B]	2	-	0/12/42/42	0/3/2/2

All (10) bond length outliers are listed below:

Mol	Chain	Res	Type	Atoms	Z	Observed(Å)	Ideal(Å)
3	D	1[B]	NHC	C4-C6	-2.98	1.51	1.55
3	D	1[B]	NHC	C3-C2	-2.95	1.51	1.55
3	A	1[A]	NHC	C4-C6	-2.92	1.51	1.55
3	D	1[B]	NHC	C4-C3	-2.68	1.52	1.57
3	A	1[B]	NHC	C4-C6	-2.68	1.52	1.55
3	D	1[A]	NHC	C4-C3	-2.44	1.53	1.57
3	A	1[B]	NHC	C3-C2	-2.39	1.52	1.55
3	A	1[B]	NHC	C4-C3	-2.39	1.53	1.57
3	A	1[A]	NHC	O3-C9	2.22	1.29	1.22
3	D	1[A]	NHC	C4-C6	-2.12	1.52	1.55

All (14) bond angle outliers are listed below:

Mol	Chain	Res	Type	Atoms	Z	Observed(°)	Ideal(°)
3	A	1[A]	NHC	O1-C2-C3	5.99	105.95	101.23
3	D	1[B]	NHC	O1-C2-C3	3.78	104.21	101.23
3	D	1[A]	NHC	O1-C2-C3	3.48	103.97	101.23
3	A	1[B]	NHC	O1-C2-C3	2.96	103.56	101.23
3	D	1[A]	NHC	O1-C2-C1	-2.80	99.46	104.06
3	A	1[A]	NHC	O1-C2-C1	-2.57	99.83	104.06
3	D	1[B]	NHC	C10-C4-C3	-2.54	112.33	116.74
3	A	1[A]	NHC	C1-C5-C6	-2.50	100.53	104.69
3	D	1[B]	NHC	O1-C2-C1	-2.30	100.27	104.06
3	A	1[B]	NHC	C1-C5-C6	-2.26	100.93	104.69
3	D	1[B]	NHC	C1-C5-C6	-2.24	100.96	104.69
3	D	1[A]	NHC	C10-C4-C3	-2.23	112.85	116.74
3	D	1[A]	NHC	O1-C6-C4	2.20	102.96	101.23
3	D	1[A]	NHC	O1-C6-C5	-2.01	100.75	104.06

There are no chirality outliers.

All (5) torsion outliers are listed below:

Mol	Chain	Res	Type	Atoms
3	A	1[A]	NHC	C7-C3-C8-O2
3	A	1[A]	NHC	C7-C3-C8-O4
3	D	1[A]	NHC	C7-C3-C8-O2
3	D	1[A]	NHC	C7-C3-C8-O4
3	D	1[A]	NHC	C3-C4-C9-O5

There are no ring outliers.

4 monomers are involved in 37 short contacts:

Mol	Chain	Res	Type	Clashes	Symm-Clashes
3	D	1[A]	NHC	5	0
3	A	1[B]	NHC	14	0
3	A	1[A]	NHC	4	0
3	D	1[B]	NHC	14	0

5.7 Other polymers

There are no such residues in this entry.

5.8 Polymer linkage issues

There are no chain breaks in this entry.

6 Fit of model and data

6.1 Protein, DNA and RNA chains

In the following table, the column labelled ‘#RSRZ > 2’ contains the number (and percentage) of RSRZ outliers, followed by percent RSRZ outliers for the chain as percentile scores relative to all X-ray entries and entries of similar resolution. The OWAB column contains the minimum, median, 95th percentile and maximum values of the occupancy-weighted average B-factor per residue. The column labelled ‘Q < 0.9’ lists the number of (and percentage) of residues with an average occupancy less than 0.9.

Mol	Chain	Analysed	<RSRZ>	#RSRZ>2	OWAB(Å ²)	Q<0.9
1	A	315/315 (100%)	0.10	4 (1%) 77 80	8, 15, 26, 36	4 (1%)
1	D	315/315 (100%)	0.48	29 (9%) 9 8	14, 25, 43, 57	4 (1%)
All	All	630/630 (100%)	0.29	33 (5%) 27 26	8, 20, 37, 57	8 (1%)

All (33) RSRZ outliers are listed below:

Mol	Chain	Res	Type	RSRZ
1	D	177	SER	6.2
1	D	176	TYR	5.6
1	D	234	THR	5.3
1	D	233	GLU	4.4
1	D	184	GLY	4.3
1	A	176	TYR	4.2
1	D	490	ALA	3.9
1	D	467	SER	3.9
1	D	183	ASP	3.9
1	D	230	THR	3.3
1	D	185	LYS	3.3
1	D	487	MET	3.3
1	D	484	VAL	2.9
1	D	232	LYS	2.8
1	A	488	ALA	2.8
1	D	178	GLY	2.7
1	D	485	LYS	2.7
1	D	358	GLU	2.6
1	A	487	MET	2.6
1	D	182	GLU	2.5
1	A	441	ARG	2.5
1	D	311	GLN	2.4
1	D	454	GLN	2.4
1	D	206	ARG	2.2

Continued on next page...

Continued from previous page...

Mol	Chain	Res	Type	RSRZ
1	D	486	PRO	2.2
1	D	377	ASP	2.2
1	D	465	GLN	2.1
1	D	330	LEU	2.1
1	D	455	MET	2.1
1	D	211	GLN	2.0
1	D	231	LEU	2.0
1	D	326	GLN	2.0
1	D	419	ASN	2.0

6.2 Non-standard residues in protein, DNA, RNA chains [i](#)

There are no non-standard protein/DNA/RNA residues in this entry.

6.3 Carbohydrates [i](#)

There are no monosaccharides in this entry.

6.4 Ligands [i](#)

In the following table, the Atoms column lists the number of modelled atoms in the group and the number defined in the chemical component dictionary. The B-factors column lists the minimum, median, 95th percentile and maximum values of B factors of atoms in the group. The column labelled 'Q< 0.9' lists the number of atoms with occupancy less than 0.9.

Mol	Type	Chain	Res	Atoms	RSCC	RSR	B-factors(Å ²)	Q<0.9
3	NHC	D	1[A]	15/15	0.86	0.20	11,12,13,14	15
3	NHC	D	1[B]	15/15	0.86	0.20	14,18,20,20	15
3	NHC	A	1[A]	15/15	0.93	0.16	5,7,8,11	15
3	NHC	A	1[B]	15/15	0.93	0.16	10,13,15,15	15
2	ZN	A	500	1/1	1.00	0.08	11,11,11,11	0
2	ZN	A	501	1/1	1.00	0.06	15,15,15,15	0
2	ZN	D	500	1/1	1.00	0.07	18,18,18,18	0
2	ZN	D	501	1/1	1.00	0.04	23,23,23,23	0

6.5 Other polymers [i](#)

There are no such residues in this entry.