



Full wwPDB X-ray Structure Validation Report

Aug 26, 2023 – 07:29 PM EDT


PDB ID : 3GHC
Title : Design, Synthesis, and X-ray Crystal Structure of Classical and Nonclassical 2-amino-4-oxo-5-substituted-6-thieno[2,3-d]pyrimidines as dual thymidylate synthase and dihydrofolate reductase inhibitors and as potential antitumor agents
Authors : Cody, V.
Deposited on : 2009-03-03
Resolution : 1.30 Å(reported)

This is a Full wwPDB X-ray Structure Validation Report for a publicly released PDB entry.

We welcome your comments at validation@mail.wwpdb.org

A user guide is available at

<https://www.wwpdb.org/validation/2017/XrayValidationReportHelp>

with specific help available everywhere you see the  symbol.

The types of validation reports are described at

<http://www.wwpdb.org/validation/2017/FAQs#types>.

The following versions of software and data (see [references](#) ①) were used in the production of this report:

MolProbity : 4.02b-467
Mogul : 1.8.5 (274361), CSD as541be (2020)
Xtrriage (Phenix) : 1.13
EDS : 2.35
buster-report : 1.1.7 (2018)
Percentile statistics : 20191225.v01 (using entries in the PDB archive December 25th 2019)
Refmac : 5.8.0158
CCP4 : 7.0.044 (Gargrove)
Ideal geometry (proteins) : Engh & Huber (2001)
Ideal geometry (DNA, RNA) : Parkinson et al. (1996)
Validation Pipeline (wwPDB-VP) : 2.35

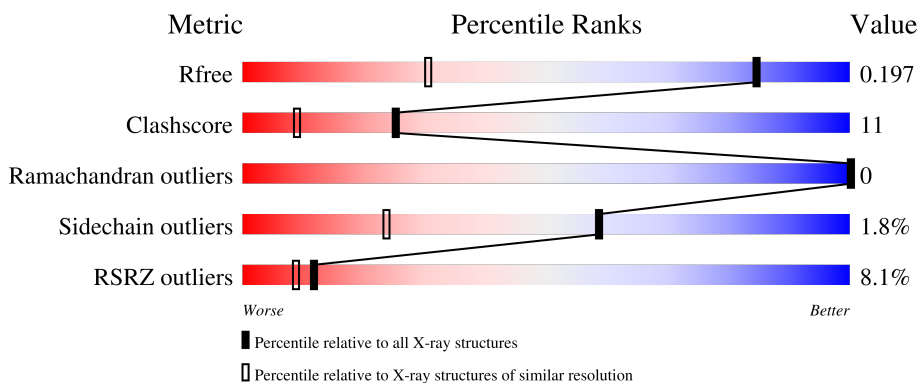
1 Overall quality at a glance

The following experimental techniques were used to determine the structure:

X-RAY DIFFRACTION

The reported resolution of this entry is 1.30 Å.

Percentile scores (ranging between 0-100) for global validation metrics of the entry are shown in the following graphic. The table shows the number of entries on which the scores are based.



Metric	Whole archive (#Entries)	Similar resolution (#Entries, resolution range(Å))
R_{free}	130704	1058 (1.30-1.30)
Clashscore	141614	1101 (1.30-1.30)
Ramachandran outliers	138981	1058 (1.30-1.30)
Sidechain outliers	138945	1058 (1.30-1.30)
RSRZ outliers	127900	1029 (1.30-1.30)

The table below summarises the geometric issues observed across the polymeric chains and their fit to the electron density. The red, orange, yellow and green segments of the lower bar indicate the fraction of residues that contain outliers for ≥ 3 , 2, 1 and 0 types of geometric quality criteria respectively. A grey segment represents the fraction of residues that are not modelled. The numeric value for each fraction is indicated below the corresponding segment, with a dot representing fractions $\leq 5\%$. The upper red bar (where present) indicates the fraction of residues that have poor fit to the electron density. The numeric value is given above the bar.

Mol	Chain	Length	Quality of chain
1	A	186	

2 Entry composition [i](#)

There are 5 unique types of molecules in this entry. The entry contains 1953 atoms, of which 0 are hydrogens and 0 are deuteriums.

In the tables below, the ZeroOcc column contains the number of atoms modelled with zero occupancy, the AltConf column contains the number of residues with at least one atom in alternate conformation and the Trace column contains the number of residues modelled with at most 2 atoms.

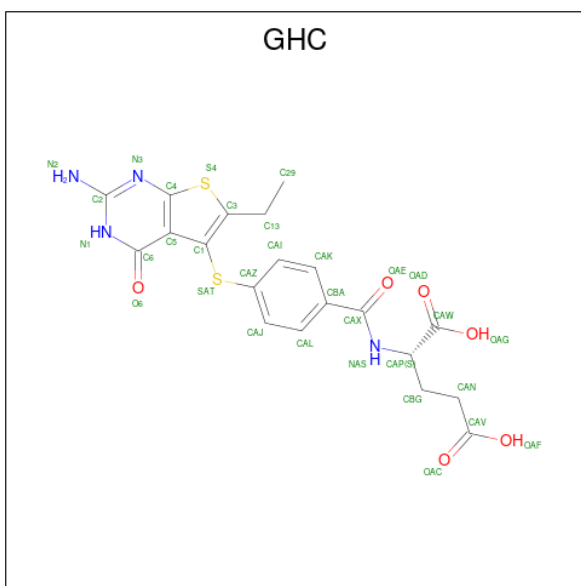
- Molecule 1 is a protein called Dihydrofolate reductase.

Mol	Chain	Residues	Atoms					ZeroOcc	AltConf	Trace
			Total	C	N	O	S			
1	A	186	1517	971	256	283	7	0	2	0

There are 2 discrepancies between the modelled and reference sequences:

Chain	Residue	Modelled	Actual	Comment	Reference
A	35	SER	GLN	engineered mutation	UNP P00374
A	64	SER	ASN	engineered mutation	UNP P00374

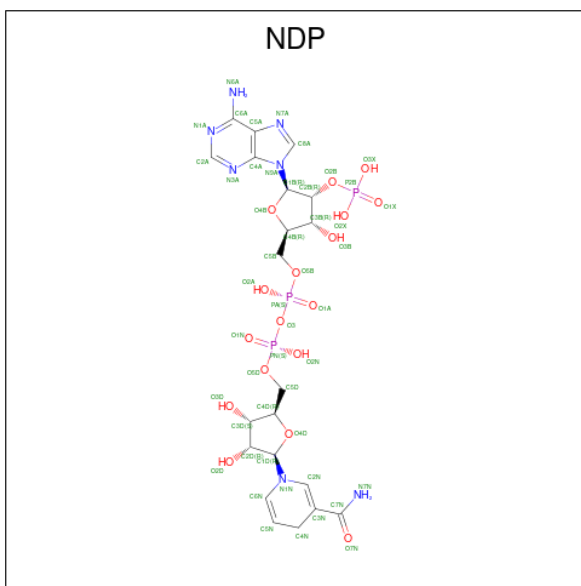
- Molecule 2 is N-({4-[(2-amino-6-ethyl-4-oxo-3,4-dihydrothieno[2,3-d]pyrimidin-5-yl)sulfanyl]phenyl}carbonyl)-L-glutamic acid (three-letter code: GHC) (formula: C₂₀H₂₀N₄O₆S₂).



Mol	Chain	Residues	Atoms					ZeroOcc	AltConf
			Total	C	N	O	S		
2	A	1	32	20	4	6	2	0	0

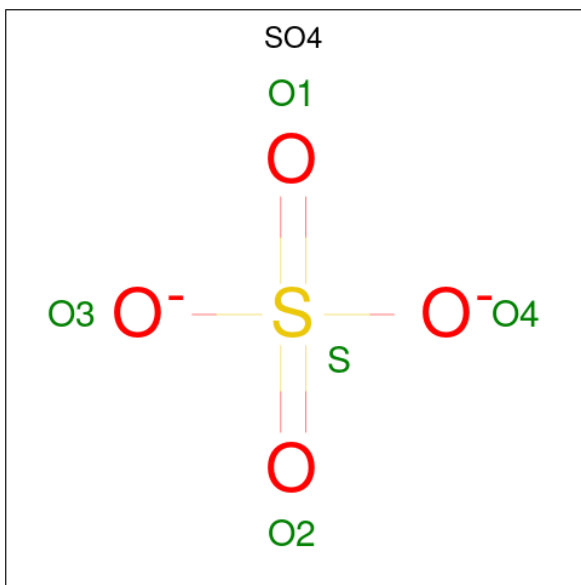
- Molecule 3 is NADPH DIHYDRO-NICOTINAMIDE-ADENINE-DINUCLEOTIDE

PHOSPHATE (three-letter code: NDP) (formula: $C_{21}H_{30}N_7O_{17}P_3$).



Mol	Chain	Residues	Atoms				ZeroOcc	AltConf	
			Total	C	N	O			P
3	A	1	48	21	7	17	3	0	0

- Molecule 4 is SULFATE ION (three-letter code: SO4) (formula: O_4S).



Mol	Chain	Residues	Atoms		ZeroOcc	AltConf
			Total	O S		
4	A	1	5	4 1	0	0
4	A	1	5	4 1	0	0

Continued on next page...

Continued from previous page...

Mol	Chain	Residues	Atoms			ZeroOcc	AltConf
4	A	1	Total	O	S	0	0
			5	4	1		

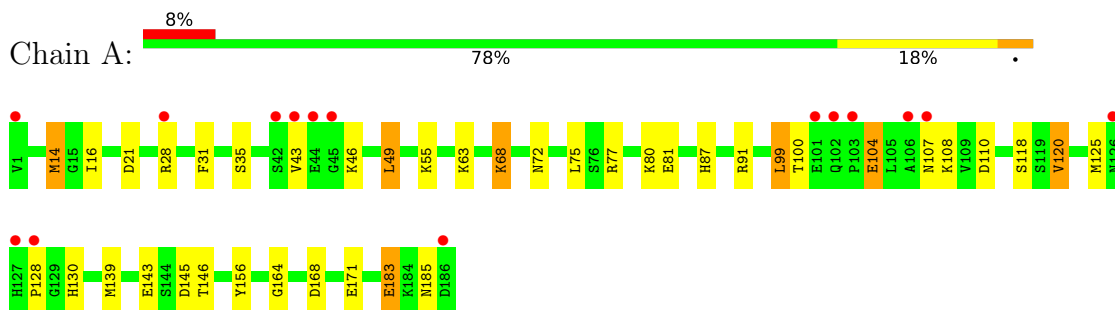
- Molecule 5 is water.

Mol	Chain	Residues	Atoms		ZeroOcc	AltConf
5	A	341	Total	O	0	0
			341	341		

3 Residue-property plots [i](#)

These plots are drawn for all protein, RNA, DNA and oligosaccharide chains in the entry. The first graphic for a chain summarises the proportions of the various outlier classes displayed in the second graphic. The second graphic shows the sequence view annotated by issues in geometry and electron density. Residues are color-coded according to the number of geometric quality criteria for which they contain at least one outlier: green = 0, yellow = 1, orange = 2 and red = 3 or more. A red dot above a residue indicates a poor fit to the electron density ($RSRZ > 2$). Stretches of 2 or more consecutive residues without any outlier are shown as a green connector. Residues present in the sample, but not in the model, are shown in grey.

- Molecule 1: Dihydrofolate reductase



4 Data and refinement statistics

Property	Value	Source
Space group	H 3	Depositor
Cell constants a, b, c, α , β , γ	84.36Å 84.36Å 77.77Å 90.00° 90.00° 120.00°	Depositor
Resolution (Å)	22.51 – 1.30 22.51 – 1.30	Depositor EDS
% Data completeness (in resolution range)	99.8 (22.51-1.30) 99.8 (22.51-1.30)	Depositor EDS
R_{merge}	0.04	Depositor
R_{sym}	0.02	Depositor
$\langle I/\sigma(I) \rangle$ ¹	9.01 (at 1.30Å)	Xtrriage
Refinement program	REFMAC 5.5.0088	Depositor
R, R_{free}	0.170 , 0.199 0.169 , 0.197	Depositor DCC
R_{free} test set	2577 reflections (5.08%)	wwPDB-VP
Wilson B-factor (Å ²)	9.7	Xtrriage
Anisotropy	0.029	Xtrriage
Bulk solvent k_{sol} (e/Å ³), B_{sol} (Å ²)	0.40 , 58.1	EDS
L-test for twinning ²	$\langle L \rangle = 0.50$, $\langle L^2 \rangle = 0.33$	Xtrriage
Estimated twinning fraction	0.021 for h,-h-k,-l	Xtrriage
F_o, F_c correlation	0.97	EDS
Total number of atoms	1953	wwPDB-VP
Average B, all atoms (Å ²)	14.0	wwPDB-VP

Xtrriage's analysis on translational NCS is as follows: *The largest off-origin peak in the Patterson function is 5.86% of the height of the origin peak. No significant pseudotranslation is detected.*

¹Intensities estimated from amplitudes.

²Theoretical values of $\langle |L| \rangle$, $\langle L^2 \rangle$ for acentric reflections are 0.5, 0.333 respectively for untwinned datasets, and 0.375, 0.2 for perfectly twinned datasets.

5 Model quality [i](#)

5.1 Standard geometry [i](#)

Bond lengths and bond angles in the following residue types are not validated in this section: SO4, NDP, GHC

The Z score for a bond length (or angle) is the number of standard deviations the observed value is removed from the expected value. A bond length (or angle) with $|Z| > 5$ is considered an outlier worth inspection. RMSZ is the root-mean-square of all Z scores of the bond lengths (or angles).

Mol	Chain	Bond lengths		Bond angles	
		RMSZ	# Z >5	RMSZ	# Z >5
1	A	1.52	13/1552 (0.8%)	1.30	14/2092 (0.7%)

Chiral center outliers are detected by calculating the chiral volume of a chiral center and verifying if the center is modelled as a planar moiety or with the opposite hand. A planarity outlier is detected by checking planarity of atoms in a peptide group, atoms in a mainchain group or atoms of a sidechain that are expected to be planar.

Mol	Chain	#Chirality outliers	#Planarity outliers
1	A	1	0

All (13) bond length outliers are listed below:

Mol	Chain	Res	Type	Atoms	Z	Observed(Å)	Ideal(Å)
1	A	183	GLU	CD-OE2	-10.45	1.14	1.25
1	A	120	VAL	CB-CG2	-8.88	1.34	1.52
1	A	81	GLU	CD-OE1	-7.94	1.17	1.25
1	A	156	TYR	CE1-CZ	-7.53	1.28	1.38
1	A	68	LYS	CB-CG	-6.87	1.33	1.52
1	A	118	SER	CB-OG	-6.58	1.33	1.42
1	A	125	MET	CG-SD	6.45	1.98	1.81
1	A	35	SER	CB-OG	-6.43	1.33	1.42
1	A	143	GLU	CD-OE2	-6.33	1.18	1.25
1	A	104	GLU	CG-CD	6.17	1.61	1.51
1	A	104	GLU	CD-OE2	5.37	1.31	1.25
1	A	171	GLU	CD-OE2	-5.34	1.19	1.25
1	A	183	GLU	CD-OE1	-5.22	1.20	1.25

All (14) bond angle outliers are listed below:

Mol	Chain	Res	Type	Atoms	Z	Observed(°)	Ideal(°)
1	A	168	ASP	CB-CG-OD2	9.38	126.74	118.30
1	A	139	MET	CG-SD-CE	-8.58	86.47	100.20
1	A	21	ASP	CB-CG-OD1	7.51	125.06	118.30
1	A	49	LEU	CB-CG-CD1	-7.47	98.29	111.00
1	A	81	GLU	OE1-CD-OE2	7.35	132.12	123.30
1	A	99	LEU	CB-CG-CD2	7.32	123.44	111.00
1	A	156	TYR	CZ-CE2-CD2	-6.48	113.97	119.80
1	A	168	ASP	OD1-CG-OD2	-6.12	111.67	123.30
1	A	21	ASP	CB-CG-OD2	-5.50	113.35	118.30
1	A	120	VAL	CG1-CB-CG2	-5.43	102.21	110.90
1	A	14	MET	CG-SD-CE	-5.28	91.75	100.20
1	A	156	TYR	CE1-CZ-CE2	5.27	128.22	119.80
1	A	110	ASP	CB-CG-OD2	-5.12	113.69	118.30
1	A	31	PHE	CB-CG-CD2	-5.03	117.28	120.80

All (1) chirality outliers are listed below:

Mol	Chain	Res	Type	Atom
1	A	146	THR	CB

There are no planarity outliers.

5.2 Too-close contacts [i](#)

In the following table, the Non-H and H(model) columns list the number of non-hydrogen atoms and hydrogen atoms in the chain respectively. The H(added) column lists the number of hydrogen atoms added and optimized by MolProbity. The Clashes column lists the number of clashes within the asymmetric unit, whereas Symm-Clashes lists symmetry-related clashes.

Mol	Chain	Non-H	H(model)	H(added)	Clashes	Symm-Clashes
1	A	1517	0	1524	33	1
2	A	32	0	18	1	0
3	A	48	0	26	2	0
4	A	15	0	0	0	0
5	A	341	0	0	13	3
All	All	1953	0	1568	34	3

The all-atom clashscore is defined as the number of clashes found per 1000 atoms (including hydrogen atoms). The all-atom clashscore for this structure is 11.

All (34) close contacts within the same asymmetric unit are listed below, sorted by their clash magnitude.

Atom-1	Atom-2	Interatomic distance (Å)	Clash overlap (Å)
1:A:120:VAL:HG13	5:A:351:HOH:O	1.38	1.23
1:A:14:MET:HE2	5:A:445:HOH:O	1.62	0.96
1:A:107:ASN:HB3	5:A:353:HOH:O	1.66	0.94
1:A:14:MET:CE	5:A:445:HOH:O	2.13	0.92
1:A:130:HIS:HE1	1:A:183:GLU:OE1	1.54	0.90
1:A:72:ASN:H	1:A:87:HIS:HD2	1.14	0.89
1:A:77:ARG:NH2	1:A:91[B]:ARG:HG3	1.93	0.82
1:A:77:ARG:NH2	1:A:91[B]:ARG:CG	2.46	0.79
1:A:72:ASN:H	1:A:87:HIS:CD2	2.01	0.77
1:A:145:ASP:OD1	1:A:146:THR:HG23	1.88	0.74
1:A:77:ARG:HH12	1:A:91[B]:ARG:HH21	1.37	0.73
1:A:91[B]:ARG:HG2	5:A:220:HOH:O	1.89	0.73
1:A:68:LYS:HE3	5:A:491:HOH:O	1.93	0.67
1:A:75:LEU:HD12	1:A:120:VAL:HG11	1.81	0.61
1:A:130:HIS:CE1	1:A:183:GLU:OE1	2.45	0.61
1:A:77:ARG:HH12	1:A:91[B]:ARG:NH2	2.01	0.59
1:A:104:GLU:O	1:A:108:LYS:HD2	2.07	0.54
1:A:43:VAL:HG11	1:A:46:LYS:HD2	1.89	0.54
1:A:77:ARG:HH21	1:A:91[B]:ARG:HG3	1.70	0.53
1:A:16:ILE:O	3:A:188:NDP:H2N	2.09	0.53
2:A:187:GHC:C3	3:A:188:NDP:H42N	2.39	0.52
1:A:77:ARG:NH1	1:A:91[B]:ARG:HH21	2.07	0.51
1:A:130:HIS:HD2	5:A:447:HOH:O	1.96	0.49
1:A:80:LYS:HE3	5:A:514:HOH:O	2.13	0.49
1:A:80:LYS:HD3	5:A:514:HOH:O	2.15	0.47
1:A:72:ASN:N	1:A:87:HIS:HD2	1.97	0.47
1:A:164:GLY:HA3	5:A:528:HOH:O	2.14	0.47
1:A:77:ARG:NH2	1:A:91[B]:ARG:HG2	2.29	0.46
1:A:28:ARG:CG	5:A:327:HOH:O	2.63	0.46
1:A:68:LYS:HE2	5:A:308:HOH:O	2.17	0.45
1:A:49:LEU:HD22	1:A:100:THR:HG22	2.01	0.41
1:A:43:VAL:CG1	1:A:46:LYS:HD2	2.50	0.41
1:A:128:PRO:HB3	5:A:330:HOH:O	2.20	0.41
1:A:77:ARG:HG2	1:A:91[B]:ARG:HG3	2.03	0.41

All (3) symmetry-related close contacts are listed below. The label for Atom-2 includes the symmetry operator and encoded unit-cell translations to be applied.

Atom-1	Atom-2	Interatomic distance (Å)	Clash overlap (Å)
1:A:55:LYS:NZ	5:A:424:HOH:O[6_455]	1.30	0.90
5:A:223:HOH:O	5:A:478:HOH:O[6_455]	2.12	0.08
5:A:249:HOH:O	5:A:304:HOH:O[5_555]	2.19	0.01

5.3 Torsion angles [i](#)

5.3.1 Protein backbone [i](#)

In the following table, the Percentiles column shows the percent Ramachandran outliers of the chain as a percentile score with respect to all X-ray entries followed by that with respect to entries of similar resolution.

The Analysed column shows the number of residues for which the backbone conformation was analysed, and the total number of residues.

Mol	Chain	Analysed	Favoured	Allowed	Outliers	Percentiles	
1	A	186/186 (100%)	182 (98%)	4 (2%)	0	100	100

There are no Ramachandran outliers to report.

5.3.2 Protein sidechains [i](#)

In the following table, the Percentiles column shows the percent sidechain outliers of the chain as a percentile score with respect to all X-ray entries followed by that with respect to entries of similar resolution.

The Analysed column shows the number of residues for which the sidechain conformation was analysed, and the total number of residues.

Mol	Chain	Analysed	Rotameric	Outliers	Percentiles	
1	A	170/168 (101%)	167 (98%)	3 (2%)	59	24

All (3) residues with a non-rotameric sidechain are listed below:

Mol	Chain	Res	Type
1	A	63	LYS
1	A	99	LEU
1	A	185	ASN

Sometimes sidechains can be flipped to improve hydrogen bonding and reduce clashes. All (3) such sidechains are listed below:

Mol	Chain	Res	Type
1	A	87	HIS
1	A	130	HIS
1	A	185	ASN

5.3.3 RNA [i](#)

There are no RNA molecules in this entry.

5.4 Non-standard residues in protein, DNA, RNA chains [i](#)

There are no non-standard protein/DNA/RNA residues in this entry.

5.5 Carbohydrates [i](#)

There are no monosaccharides in this entry.

5.6 Ligand geometry [i](#)

5 ligands are modelled in this entry.

In the following table, the Counts columns list the number of bonds (or angles) for which Mogul statistics could be retrieved, the number of bonds (or angles) that are observed in the model and the number of bonds (or angles) that are defined in the Chemical Component Dictionary. The Link column lists molecule types, if any, to which the group is linked. The Z score for a bond length (or angle) is the number of standard deviations the observed value is removed from the expected value. A bond length (or angle) with $|Z| > 2$ is considered an outlier worth inspection. RMSZ is the root-mean-square of all Z scores of the bond lengths (or angles).

Mol	Type	Chain	Res	Link	Bond lengths			Bond angles		
					Counts	RMSZ	# Z > 2	Counts	RMSZ	# Z > 2
2	GHC	A	187	-	32,34,34	2.68	5 (15%)	36,48,48	1.53	6 (16%)
4	SO4	A	189	-	4,4,4	0.50	0	6,6,6	0.83	0
4	SO4	A	191	-	4,4,4	0.55	0	6,6,6	0.84	0
4	SO4	A	190	-	4,4,4	0.57	0	6,6,6	0.63	0
3	NDP	A	188	-	45,52,52	1.90	11 (24%)	53,80,80	1.27	8 (15%)

In the following table, the Chirals column lists the number of chiral outliers, the number of chiral centers analysed, the number of these observed in the model and the number defined in the Chemical Component Dictionary. Similar counts are reported in the Torsion and Rings columns. '-' means no outliers of that kind were identified.

Mol	Type	Chain	Res	Link	Chirals	Torsions	Rings
2	GHC	A	187	-	-	2/22/23/23	0/3/3/3
3	NDP	A	188	-	-	2/30/77/77	0/5/5/5

All (16) bond length outliers are listed below:

Mol	Chain	Res	Type	Atoms	Z	Observed(Å)	Ideal(Å)
2	A	187	GHC	C13-C3	13.09	1.56	1.50
3	A	188	NDP	C6N-C5N	5.05	1.42	1.33
3	A	188	NDP	C4N-C3N	-4.68	1.40	1.49
3	A	188	NDP	O4B-C1B	4.60	1.47	1.41
3	A	188	NDP	O4D-C4D	3.49	1.52	1.45
3	A	188	NDP	C2A-N3A	3.27	1.37	1.32
2	A	187	GHC	C6-N1	2.83	1.42	1.37
3	A	188	NDP	C3D-C4D	-2.65	1.46	1.53
2	A	187	GHC	C5-C6	-2.51	1.42	1.47
3	A	188	NDP	C4N-C5N	-2.43	1.42	1.48
2	A	187	GHC	C4-S4	-2.42	1.69	1.74
3	A	188	NDP	C3B-C2B	-2.13	1.48	1.52
3	A	188	NDP	O3D-C3D	2.12	1.48	1.43
3	A	188	NDP	PA-O1A	-2.09	1.43	1.50
2	A	187	GHC	CAN-CAV	2.08	1.55	1.50
3	A	188	NDP	PN-O2N	-2.03	1.45	1.55

All (14) bond angle outliers are listed below:

Mol	Chain	Res	Type	Atoms	Z	Observed(°)	Ideal(°)
2	A	187	GHC	C3-C1-SAT	-4.82	121.37	126.77
3	A	188	NDP	O4B-C1B-C2B	-3.53	100.46	106.59
3	A	188	NDP	C1D-N1N-C2N	-3.10	115.94	121.11
2	A	187	GHC	CAI-CAK-CBA	-3.02	117.26	120.78
2	A	187	GHC	OAC-CAV-CAN	-2.93	113.68	123.08
3	A	188	NDP	N3A-C2A-N1A	-2.56	124.68	128.68
2	A	187	GHC	O6-C6-N1	-2.47	117.73	120.65
3	A	188	NDP	C4A-C5A-N7A	-2.45	106.85	109.40
2	A	187	GHC	CAK-CBA-CAL	2.43	122.04	118.59
3	A	188	NDP	C3N-C7N-N7N	2.27	121.70	117.67
2	A	187	GHC	C29-C13-C3	-2.25	109.34	114.88
3	A	188	NDP	C1B-N9A-C4A	-2.07	123.00	126.64
3	A	188	NDP	O2N-PN-O1N	2.05	122.39	112.24
3	A	188	NDP	O2B-C2B-C3B	2.01	118.97	111.68

There are no chirality outliers.

All (4) torsion outliers are listed below:

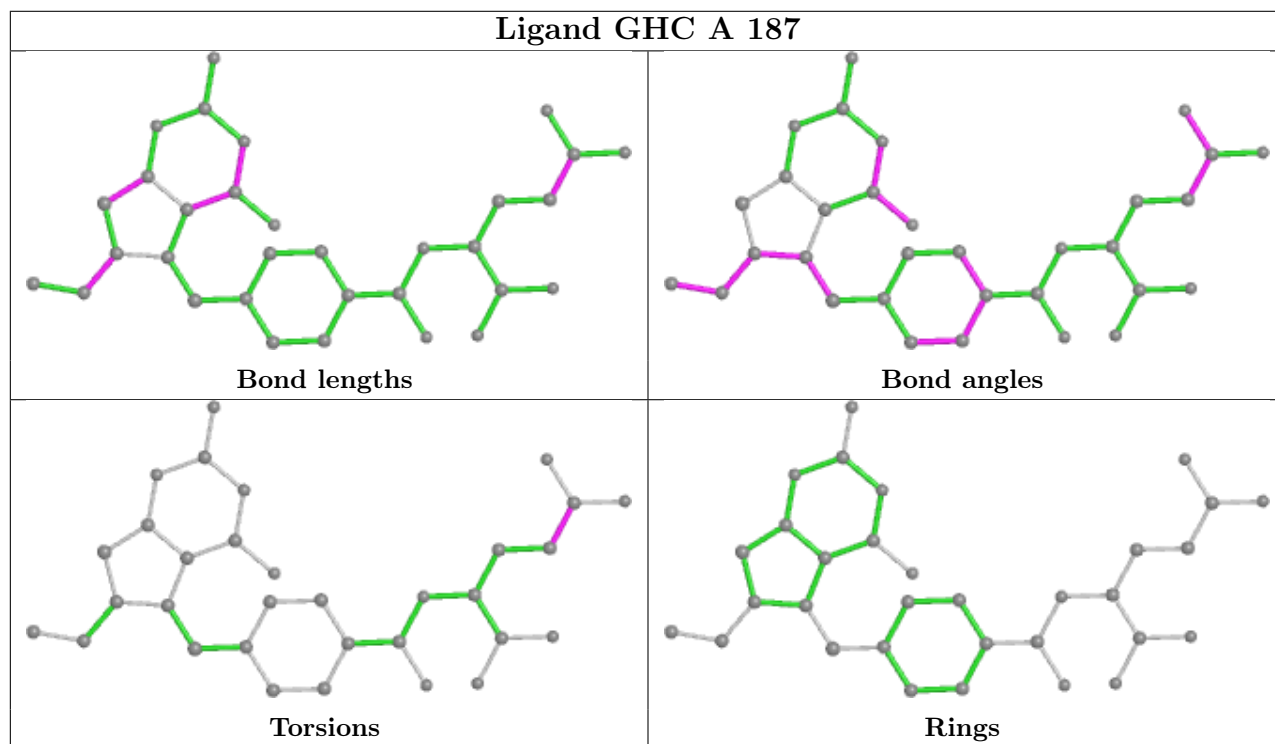
Mol	Chain	Res	Type	Atoms
3	A	188	NDP	O4D-C1D-N1N-C2N
3	A	188	NDP	C4D-C5D-O5D-PN
2	A	187	GHC	CBG-CAN-CAV-OAF
2	A	187	GHC	CBG-CAN-CAV-OAC

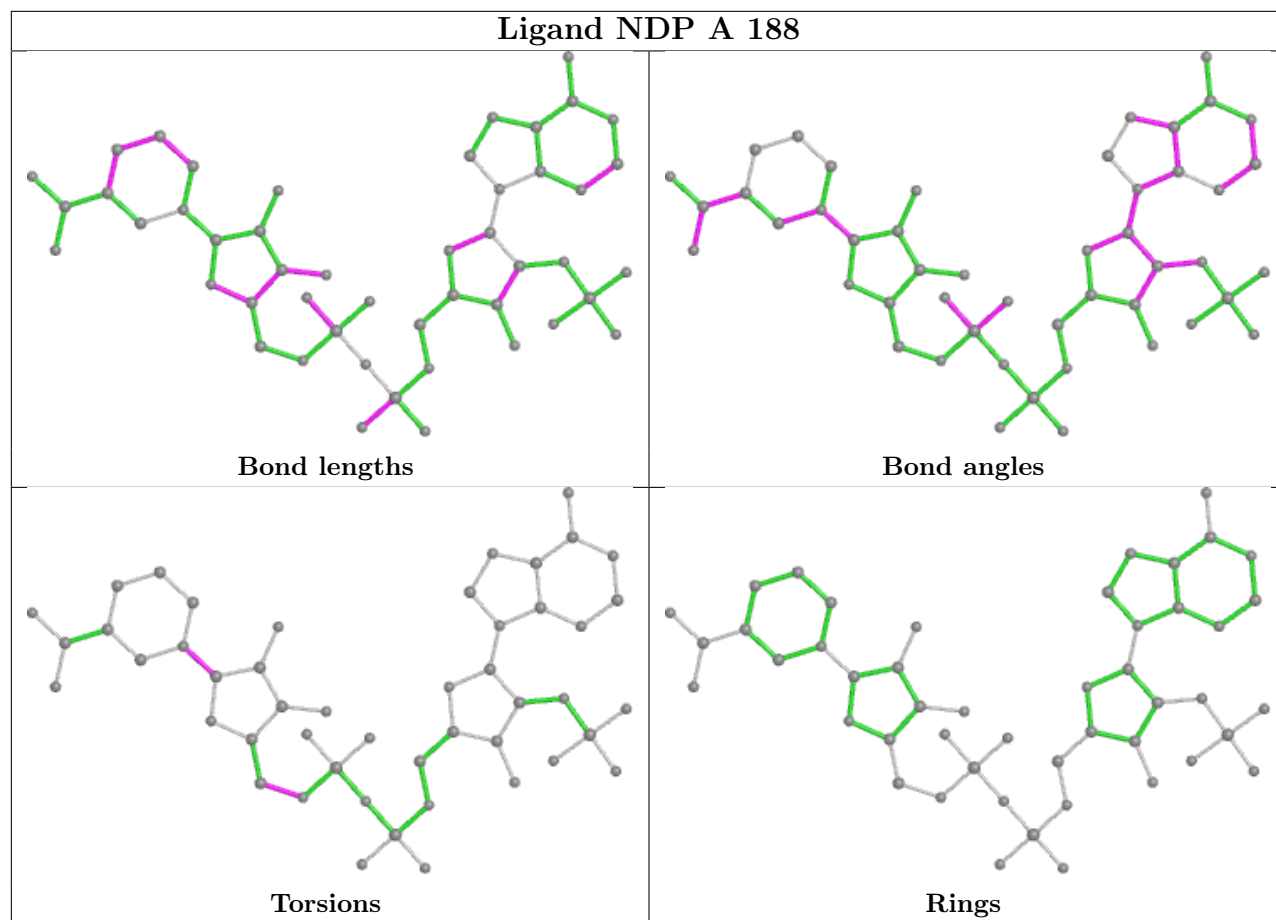
There are no ring outliers.

2 monomers are involved in 2 short contacts:

Mol	Chain	Res	Type	Clashes	Symm-Clashes
2	A	187	GHC	1	0
3	A	188	NDP	2	0

The following is a two-dimensional graphical depiction of Mogul quality analysis of bond lengths, bond angles, torsion angles, and ring geometry for all instances of the Ligand of Interest. In addition, ligands with molecular weight > 250 and outliers as shown on the validation Tables will also be included. For torsion angles, if less than 5% of the Mogul distribution of torsion angles is within 10 degrees of the torsion angle in question, then that torsion angle is considered an outlier. Any bond that is central to one or more torsion angles identified as an outlier by Mogul will be highlighted in the graph. For rings, the root-mean-square deviation (RMSD) between the ring in question and similar rings identified by Mogul is calculated over all ring torsion angles. If the average RMSD is greater than 60 degrees and the minimal RMSD between the ring in question and any Mogul-identified rings is also greater than 60 degrees, then that ring is considered an outlier. The outliers are highlighted in purple. The color gray indicates Mogul did not find sufficient equivalents in the CSD to analyse the geometry.





5.7 Other polymers [\(i\)](#)

There are no such residues in this entry.

5.8 Polymer linkage issues [\(i\)](#)

There are no chain breaks in this entry.

6 Fit of model and data [i](#)

6.1 Protein, DNA and RNA chains [i](#)

In the following table, the column labelled '#RSRZ > 2' contains the number (and percentage) of RSRZ outliers, followed by percent RSRZ outliers for the chain as percentile scores relative to all X-ray entries and entries of similar resolution. The OWAB column contains the minimum, median, 95th percentile and maximum values of the occupancy-weighted average B-factor per residue. The column labelled 'Q < 0.9' lists the number of (and percentage) of residues with an average occupancy less than 0.9.

Mol	Chain	Analysed	<RSRZ>	#RSRZ>2	OWAB(Å ²)	Q<0.9
1	A	186/186 (100%)	0.51	15 (8%) 12 9	5, 10, 27, 35	0

All (15) RSRZ outliers are listed below:

Mol	Chain	Res	Type	RSRZ
1	A	128	PRO	4.8
1	A	106	ALA	4.3
1	A	42	SER	4.3
1	A	103	PRO	4.1
1	A	107	ASN	3.9
1	A	44	GLU	3.7
1	A	1	VAL	3.1
1	A	102	GLN	2.9
1	A	127	HIS	2.6
1	A	45	GLY	2.3
1	A	126	ASN	2.3
1	A	28	ARG	2.1
1	A	186	ASP	2.0
1	A	101	GLU	2.0
1	A	43	VAL	2.0

6.2 Non-standard residues in protein, DNA, RNA chains [i](#)

There are no non-standard protein/DNA/RNA residues in this entry.

6.3 Carbohydrates [i](#)

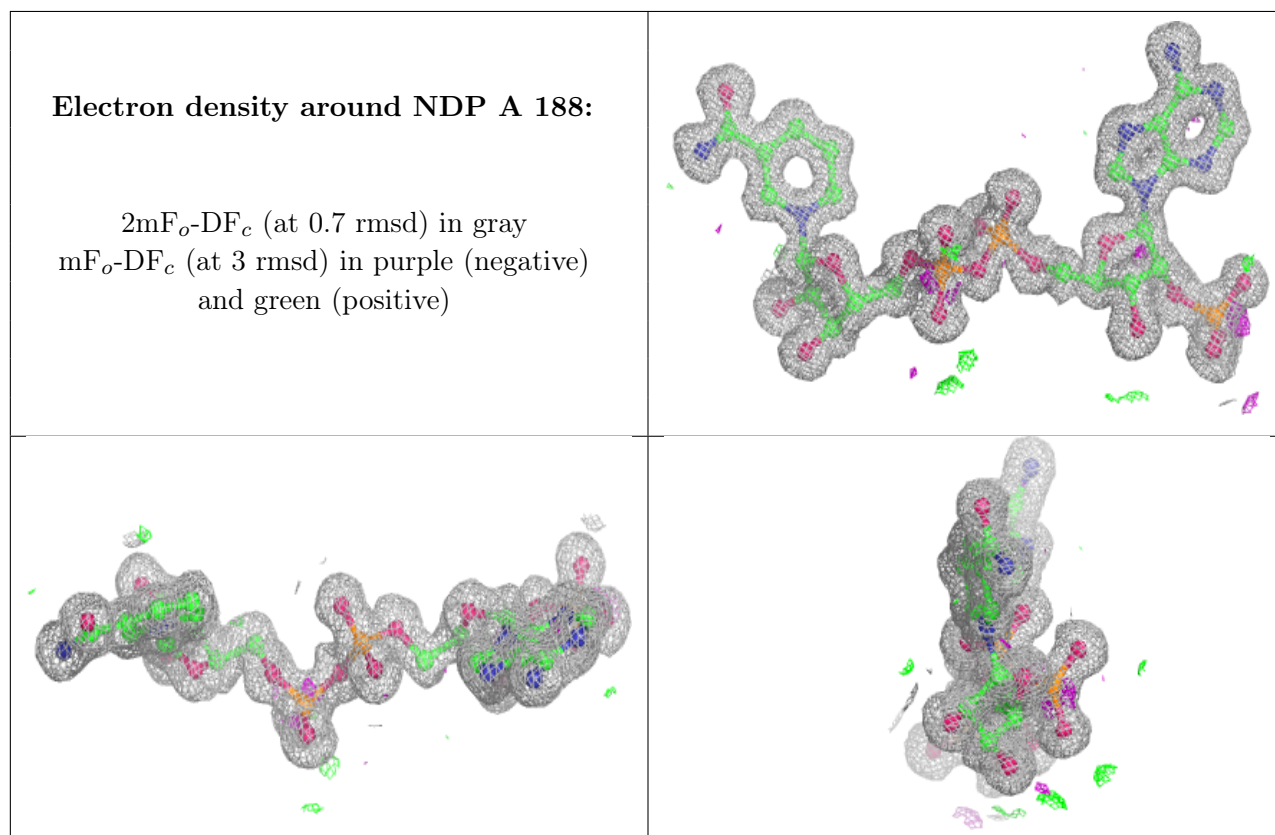
There are no monosaccharides in this entry.

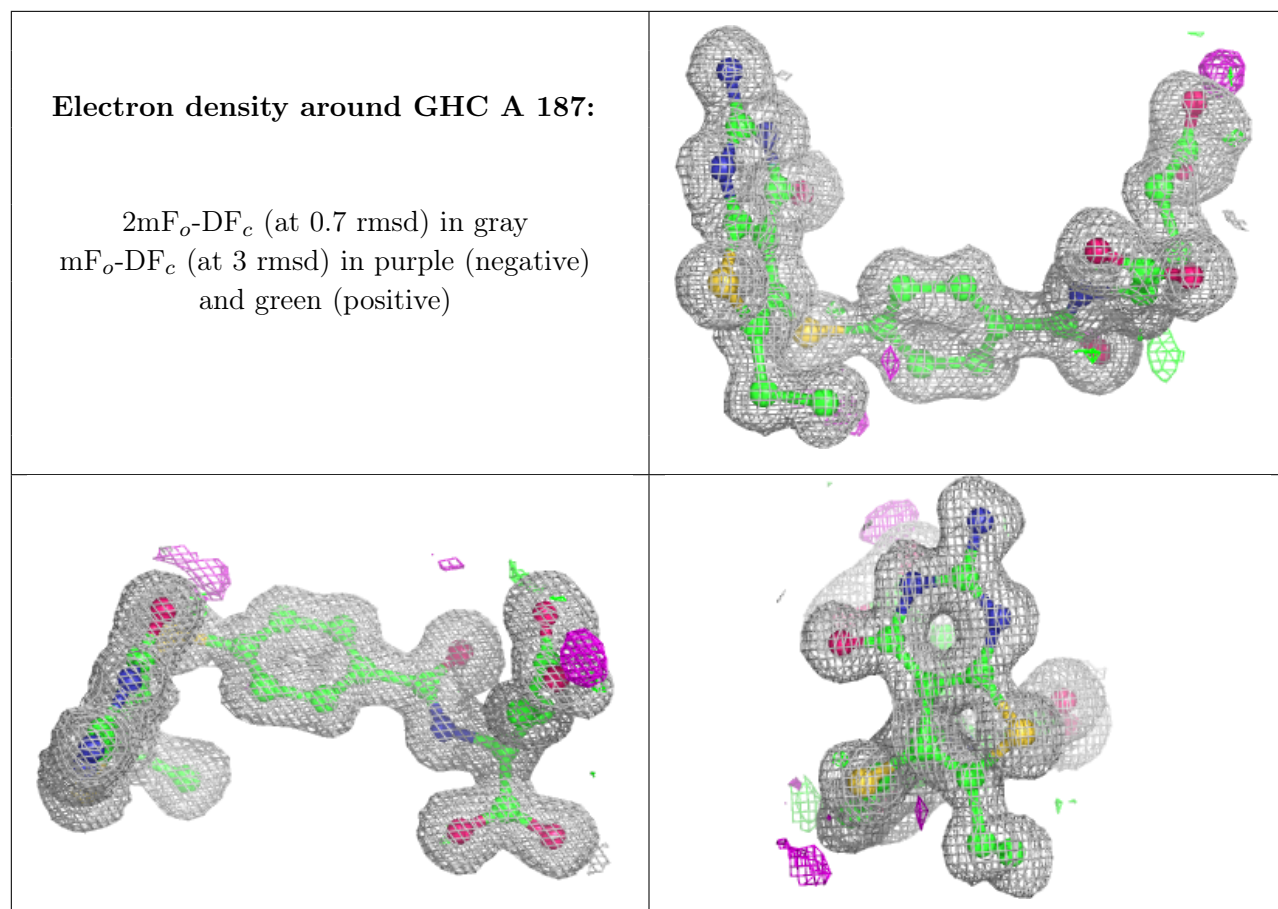
6.4 Ligands [\(i\)](#)

In the following table, the Atoms column lists the number of modelled atoms in the group and the number defined in the chemical component dictionary. The B-factors column lists the minimum, median, 95th percentile and maximum values of B factors of atoms in the group. The column labelled 'Q < 0.9' lists the number of atoms with occupancy less than 0.9.

Mol	Type	Chain	Res	Atoms	RSCC	RSR	B-factors(Å ²)	Q<0.9
4	SO4	A	191	5/5	0.80	0.25	34,42,45,45	0
4	SO4	A	190	5/5	0.89	0.30	22,34,34,35	0
4	SO4	A	189	5/5	0.91	0.28	8,24,40,40	0
3	NDP	A	188	48/48	0.98	0.07	5,7,12,13	0
2	GHC	A	187	32/32	0.98	0.08	4,7,19,26	0

The following is a graphical depiction of the model fit to experimental electron density of all instances of the Ligand of Interest. In addition, ligands with molecular weight > 250 and outliers as shown on the geometry validation Tables will also be included. Each fit is shown from different orientation to approximate a three-dimensional view.





6.5 Other polymers [i](#)

There are no such residues in this entry.