



# Full wwPDB X-ray Structure Validation Report ⓘ

Oct 10, 2021 – 09:09 PM EDT

PDB ID : 3EIH  
Title : Crystal structure of *S.cerevisiae* Vps4 in the presence of ATPgammaS  
Authors : Gonciarz, M.D.; Whitby, F.G.; Eckert, D.M.; Kieffer, C.; Heroux, A.; Sundquist, W.I.; Hill, C.P.  
Deposited on : 2008-09-15  
Resolution : 3.25 Å (reported)

This is a Full wwPDB X-ray Structure Validation Report for a publicly released PDB entry.

We welcome your comments at [validation@mail.wwpdb.org](mailto:validation@mail.wwpdb.org)

A user guide is available at

<https://www.wwpdb.org/validation/2017/XrayValidationReportHelp>

with specific help available everywhere you see the ⓘ symbol.

---

The following versions of software and data (see [references ⓘ](#)) were used in the production of this report:

MolProbity : 4.02b-467  
Mogul : 1.8.5 (274361), CSD as541be (2020)  
Xtriage (Phenix) : 1.13  
EDS : 2.23.2  
buster-report : 1.1.7 (2018)  
Percentile statistics : 20191225.v01 (using entries in the PDB archive December 25th 2019)  
Refmac : 5.8.0158  
CCP4 : 7.0.044 (Gargrove)  
Ideal geometry (proteins) : Engh & Huber (2001)  
Ideal geometry (DNA, RNA) : Parkinson et al. (1996)  
Validation Pipeline (wwPDB-VP) : 2.23.2

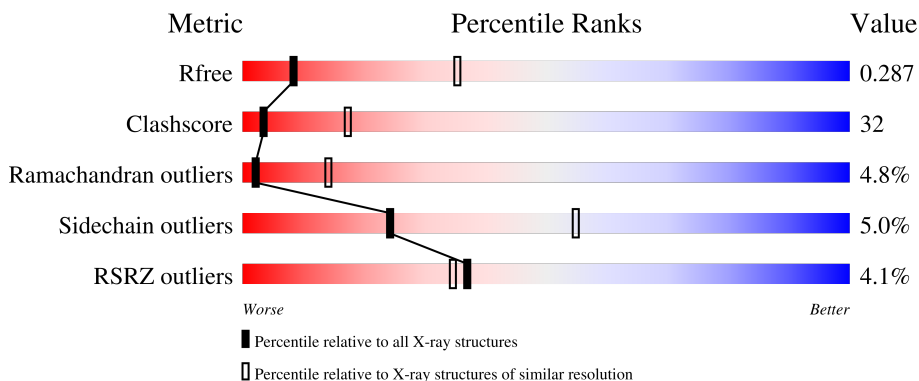
# 1 Overall quality at a glance

The following experimental techniques were used to determine the structure:

*X-RAY DIFFRACTION*

The reported resolution of this entry is 3.25 Å.

Percentile scores (ranging between 0-100) for global validation metrics of the entry are shown in the following graphic. The table shows the number of entries on which the scores are based.



Metric	Whole archive (#Entries)	Similar resolution (#Entries, resolution range(Å))
$R_{free}$	130704	1191 (3.30-3.22)
Clashscore	141614	1251 (3.30-3.22)
Ramachandran outliers	138981	1229 (3.30-3.22)
Sidechain outliers	138945	1228 (3.30-3.22)
RSRZ outliers	127900	1154 (3.30-3.22)

The table below summarises the geometric issues observed across the polymeric chains and their fit to the electron density. The red, orange, yellow and green segments of the lower bar indicate the fraction of residues that contain outliers for  $\geq 3$ , 2, 1 and 0 types of geometric quality criteria respectively. A grey segment represents the fraction of residues that are not modelled. The numeric value for each fraction is indicated below the corresponding segment, with a dot representing fractions  $\leq 5\%$ . The upper red bar (where present) indicates the fraction of residues that have poor fit to the electron density. The numeric value is given above the bar.

Mol	Chain	Length	Quality of chain
1	A	340	 2% 53% 36% 6%
1	B	340	 2% 50% 39% 7%
1	C	340	 8% 45% 39% 7% 9%

The following table lists non-polymeric compounds, carbohydrate monomers and non-standard residues in protein, DNA, RNA chains that are outliers for geometric or electron-density-fit criteria:

Mol	Type	Chain	Res	Chirality	Geometry	Clashes	Electron density
4	EDO	C	501	-	-	X	-

## 2 Entry composition

There are 4 unique types of molecules in this entry. The entry contains 7396 atoms, of which 0 are hydrogens and 0 are deuteriums.

In the tables below, the ZeroOcc column contains the number of atoms modelled with zero occupancy, the AltConf column contains the number of residues with at least one atom in alternate conformation and the Trace column contains the number of residues modelled with at most 2 atoms.

- Molecule 1 is a protein called Vacuolar protein sorting-associated protein 4.

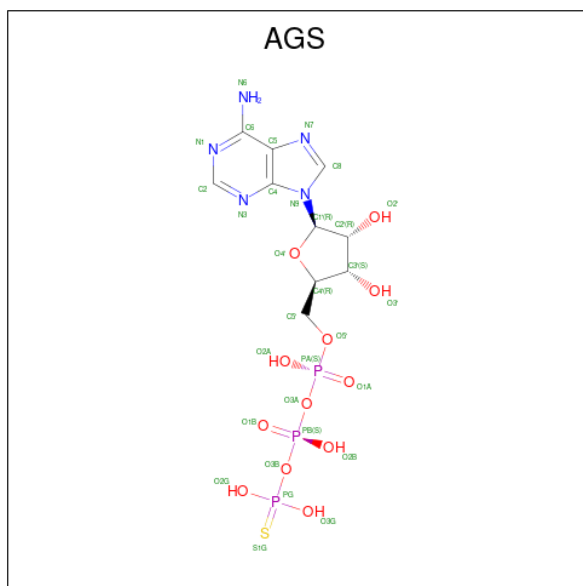
Mol	Chain	Residues	Atoms					ZeroOcc	AltConf	Trace
			Total	C	N	O	S			
1	A	319	Total 2469	C 1552	N 419	O 489	S 9	0	0	0
1	B	316	Total 2449	C 1540	N 415	O 485	S 9	0	0	0
1	C	310	Total 2409	C 1518	N 407	O 475	S 9	0	0	0

There are 21 discrepancies between the modelled and reference sequences:

Chain	Residue	Modelled	Actual	Comment	Reference
A	98	GLY	-	expression tag	UNP P52917
A	99	ILE	-	expression tag	UNP P52917
A	100	ASP	-	expression tag	UNP P52917
A	101	PRO	-	expression tag	UNP P52917
A	102	PHE	-	expression tag	UNP P52917
A	103	THR	-	expression tag	UNP P52917
A	233	GLN	GLU	engineered mutation	UNP P52917
B	98	GLY	-	expression tag	UNP P52917
B	99	ILE	-	expression tag	UNP P52917
B	100	ASP	-	expression tag	UNP P52917
B	101	PRO	-	expression tag	UNP P52917
B	102	PHE	-	expression tag	UNP P52917
B	103	THR	-	expression tag	UNP P52917
B	233	GLN	GLU	engineered mutation	UNP P52917
C	98	GLY	-	expression tag	UNP P52917
C	99	ILE	-	expression tag	UNP P52917
C	100	ASP	-	expression tag	UNP P52917
C	101	PRO	-	expression tag	UNP P52917
C	102	PHE	-	expression tag	UNP P52917
C	103	THR	-	expression tag	UNP P52917
C	233	GLN	GLU	engineered mutation	UNP P52917

- Molecule 2 is PHOSPHOTHIOPHOSPHORIC ACID-ADENYLATE ESTER (three-letter

code: AGS) (formula: C<sub>10</sub>H<sub>16</sub>N<sub>5</sub>O<sub>12</sub>P<sub>3</sub>S).

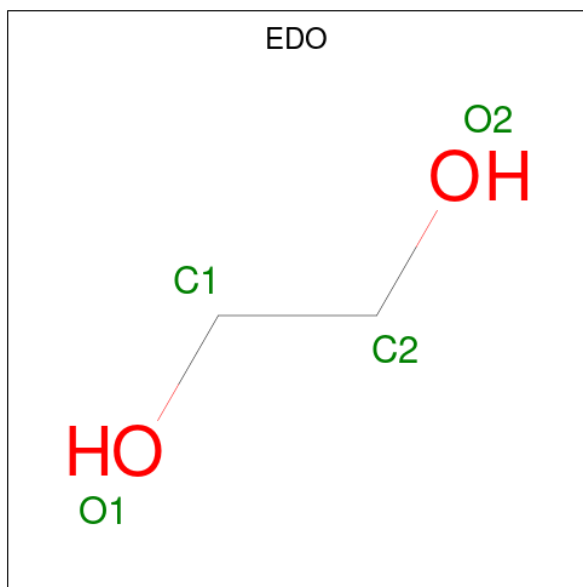


Mol	Chain	Residues	Atoms					ZeroOcc	AltConf	
			Total	C	N	O	P			S
2	A	1	Total	C	N	O	P	S	0	0
			31	10	5	12	3	1		
2	B	1	Total	C	N	O	P	S	0	0
			31	10	5	12	3	1		

- Molecule 3 is MAGNESIUM ION (three-letter code: MG) (formula: Mg).

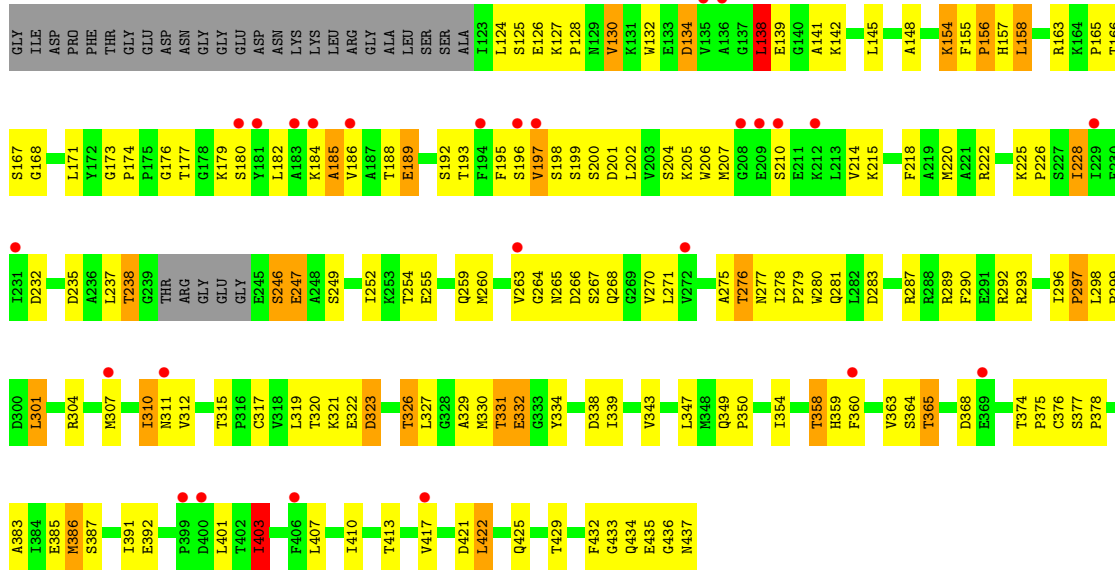
Mol	Chain	Residues	Atoms	ZeroOcc	AltConf
3	A	1	Total Mg 1 1	0	0
3	B	1	Total Mg 1 1	0	0
3	C	1	Total Mg 1 1	0	0

- Molecule 4 is 1,2-ETHANEDIOL (three-letter code: EDO) (formula: C<sub>2</sub>H<sub>6</sub>O<sub>2</sub>).



Mol	Chain	Residues	Atoms			ZeroOcc	AltConf
4	C	1	Total	C	O	0	0
			4	2	2		







## 4 Data and refinement statistics

Property	Value	Source
Space group	P 21 21 21	Depositor
Cell constants a, b, c, $\alpha$ , $\beta$ , $\gamma$	76.96Å 119.80Å 156.83Å 90.00° 90.00° 90.00°	Depositor
Resolution (Å)	33.00 – 3.25 49.93 – 3.25	Depositor EDS
% Data completeness (in resolution range)	99.7 (33.00-3.25) 99.6 (49.93-3.25)	Depositor EDS
$R_{merge}$	0.12	Depositor
$R_{sym}$	(Not available)	Depositor
$\langle I/\sigma(I) \rangle$ <sup>1</sup>	2.77 (at 3.25Å)	Xtrriage
Refinement program	REFMAC 5.4.0054	Depositor
R, $R_{free}$	0.226 , 0.305 0.242 , 0.287	Depositor DCC
$R_{free}$ test set	1208 reflections (5.14%)	wwPDB-VP
Wilson B-factor (Å <sup>2</sup> )	79.8	Xtrriage
Anisotropy	0.164	Xtrriage
Bulk solvent $k_{sol}$ (e/Å <sup>3</sup> ), $B_{sol}$ (Å <sup>2</sup> )	0.29 , 78.2	EDS
L-test for twinning <sup>2</sup>	$\langle  L  \rangle = 0.49$ , $\langle L^2 \rangle = 0.32$	Xtrriage
Estimated twinning fraction	No twinning to report.	Xtrriage
$F_o, F_c$ correlation	0.91	EDS
Total number of atoms	7396	wwPDB-VP
Average B, all atoms (Å <sup>2</sup> )	86.0	wwPDB-VP

Xtrriage's analysis on translational NCS is as follows: *The largest off-origin peak in the Patterson function is 2.99% of the height of the origin peak. No significant pseudotranslation is detected.*

<sup>1</sup>Intensities estimated from amplitudes.

<sup>2</sup>Theoretical values of  $\langle |L| \rangle$ ,  $\langle L^2 \rangle$  for acentric reflections are 0.5, 0.333 respectively for untwinned datasets, and 0.375, 0.2 for perfectly twinned datasets.

## 5 Model quality [i](#)

### 5.1 Standard geometry [i](#)

Bond lengths and bond angles in the following residue types are not validated in this section: AGS, MG, EDO

The Z score for a bond length (or angle) is the number of standard deviations the observed value is removed from the expected value. A bond length (or angle) with  $|Z| > 5$  is considered an outlier worth inspection. RMSZ is the root-mean-square of all Z scores of the bond lengths (or angles).

Mol	Chain	Bond lengths		Bond angles	
		RMSZ	# $ Z  > 5$	RMSZ	# $ Z  > 5$
1	A	0.64	0/2511	0.84	6/3395 (0.2%)
1	B	0.60	0/2491	0.81	5/3368 (0.1%)
1	C	0.55	0/2450	0.70	0/3312
All	All	0.60	0/7452	0.79	11/10075 (0.1%)

Chiral center outliers are detected by calculating the chiral volume of a chiral center and verifying if the center is modelled as a planar moiety or with the opposite hand. A planarity outlier is detected by checking planarity of atoms in a peptide group, atoms in a mainchain group or atoms of a sidechain that are expected to be planar.

Mol	Chain	#Chirality outliers	#Planarity outliers
1	A	0	2
1	B	0	1
All	All	0	3

There are no bond length outliers.

All (11) bond angle outliers are listed below:

Mol	Chain	Res	Type	Atoms	Z	Observed(°)	Ideal(°)
1	A	156	PRO	N-CA-C	13.60	147.47	112.10
1	A	157	HIS	N-CA-C	-9.61	85.06	111.00
1	B	375	PRO	CA-N-CD	-9.44	98.29	111.50
1	A	319	LEU	CA-CB-CG	6.63	130.54	115.30
1	B	216	GLN	N-CA-C	6.25	127.87	111.00
1	A	156	PRO	CB-CA-C	-5.91	97.23	112.00
1	B	430	ARG	NE-CZ-NH1	5.71	123.16	120.30
1	B	137	GLY	N-CA-C	-5.65	98.97	113.10
1	A	379	GLY	N-CA-C	-5.63	99.02	113.10
1	B	138	LEU	N-CA-C	-5.14	97.11	111.00
1	A	358	THR	N-CA-CB	5.03	119.86	110.30

There are no chirality outliers.

All (3) planarity outliers are listed below:

Mol	Chain	Res	Type	Group
1	A	157	HIS	Peptide
1	A	357	ALA	Peptide
1	B	216	GLN	Peptide

## 5.2 Too-close contacts [i](#)

In the following table, the Non-H and H(model) columns list the number of non-hydrogen atoms and hydrogen atoms in the chain respectively. The H(added) column lists the number of hydrogen atoms added and optimized by MolProbity. The Clashes column lists the number of clashes within the asymmetric unit, whereas Symm-Clashes lists symmetry-related clashes.

Mol	Chain	Non-H	H(model)	H(added)	Clashes	Symm-Clashes
1	A	2469	0	2476	122	0
1	B	2449	0	2457	145	0
1	C	2409	0	2417	216	0
2	A	31	0	12	1	0
2	B	31	0	12	4	0
3	A	1	0	0	0	0
3	B	1	0	0	0	0
3	C	1	0	0	0	0
4	C	4	0	6	10	0
All	All	7396	0	7380	476	0

The all-atom clashscore is defined as the number of clashes found per 1000 atoms (including hydrogen atoms). The all-atom clashscore for this structure is 32.

All (476) close contacts within the same asymmetric unit are listed below, sorted by their clash magnitude.

Atom-1	Atom-2	Interatomic distance (Å)	Clash overlap (Å)
1:C:154:LYS:HD3	1:C:155:PHE:CE1	1.61	1.34
1:B:386:MET:CE	1:B:391:ILE:HG13	1.63	1.27
1:B:374:THR:HG23	1:B:375:PRO:CD	1.68	1.24
1:B:386:MET:HE1	1:B:391:ILE:CG1	1.67	1.24
1:C:154:LYS:HE3	1:C:155:PHE:CZ	1.75	1.21
1:C:218:PHE:CD1	1:C:259:GLN:HG2	1.75	1.21
1:C:218:PHE:CD1	1:C:259:GLN:CG	2.24	1.20
1:C:287:ARG:HG2	1:C:293:ARG:HH21	1.04	1.15
1:A:147:GLU:HB2	1:B:355:GLN:OE1	1.49	1.10

*Continued on next page...*

*Continued from previous page...*

Atom-1	Atom-2	Interatomic distance (Å)	Clash overlap (Å)
1:C:154:LYS:CD	1:C:155:PHE:CE1	2.34	1.09
1:B:374:THR:HG23	1:B:375:PRO:HD3	1.32	1.07
1:C:154:LYS:CE	1:C:155:PHE:CZ	2.38	1.06
1:C:218:PHE:CE1	1:C:259:GLN:HG2	1.90	1.05
1:B:374:THR:CG2	1:B:375:PRO:CD	2.36	1.04
1:C:263:VAL:HB	1:C:289:ARG:NH2	1.73	1.02
1:C:287:ARG:HG2	1:C:293:ARG:NH2	1.71	1.02
1:B:374:THR:HG23	1:B:375:PRO:HD2	1.40	1.00
1:B:374:THR:CG2	1:B:375:PRO:HD2	1.91	1.00
1:B:386:MET:CE	1:B:391:ILE:CG1	2.29	1.00
1:C:154:LYS:HD3	1:C:155:PHE:HE1	1.19	0.99
1:C:287:ARG:CG	1:C:293:ARG:HH21	1.75	0.99
1:B:386:MET:HE1	1:B:391:ILE:HG13	1.29	0.98
1:A:319:LEU:CD2	1:A:403:ILE:HD13	1.94	0.97
1:C:154:LYS:O	1:C:156:PRO:HD3	1.62	0.97
1:A:307:MET:HE3	1:A:336:GLY:HA2	1.48	0.95
1:A:151:LEU:HD21	1:B:351:ILE:HG23	1.46	0.95
1:B:386:MET:HE1	1:B:391:ILE:HG12	1.46	0.94
1:C:264:GLY:HA2	1:C:265:ASN:HB3	1.46	0.94
1:A:287:ARG:NH1	1:A:437:ASN:O	2.01	0.92
1:A:319:LEU:HD22	1:A:323:ASP:HB3	1.51	0.92
1:C:298:LEU:HD12	1:C:298:LEU:O	1.67	0.92
1:A:304:ARG:HG2	1:A:339:ILE:HD11	1.49	0.92
1:A:307:MET:CE	1:A:336:GLY:HA2	2.00	0.92
1:C:280:TRP:CZ3	1:C:425:GLN:NE2	2.38	0.92
1:C:218:PHE:CG	1:C:259:GLN:CD	2.43	0.92
1:C:195:PHE:CE2	1:C:220:MET:HB3	2.05	0.91
1:C:218:PHE:CE1	1:C:259:GLN:CG	2.51	0.91
1:B:413:THR:HG22	1:B:414:ARG:N	1.83	0.90
1:C:218:PHE:CG	1:C:259:GLN:CG	2.53	0.90
1:C:127:LYS:HG2	1:C:193:THR:HA	1.54	0.89
1:C:403:ILE:O	1:C:407:LEU:HG	1.73	0.88
1:C:141:ALA:O	1:C:145:LEU:HD12	1.76	0.86
1:C:218:PHE:CB	1:C:259:GLN:OE1	2.23	0.86
1:B:375:PRO:HD2	1:B:375:PRO:O	1.75	0.86
1:A:357:ALA:HA	1:A:358:THR:OG1	1.76	0.86
1:A:403:ILE:HG22	1:A:407:LEU:HD11	1.57	0.85
1:A:384:ILE:HD12	1:A:386:MET:CE	2.05	0.85
1:C:192:SER:OG	1:C:226:PRO:HB2	1.74	0.84
1:C:334:TYR:HD2	1:C:338:ASP:HB3	1.41	0.83
1:A:319:LEU:HD23	1:A:403:ILE:HD13	1.61	0.82

*Continued on next page...*

*Continued from previous page...*

Atom-1	Atom-2	Interatomic distance (Å)	Clash overlap (Å)
1:C:276:THR:HG22	1:C:278:ILE:H	1.43	0.82
1:A:308:PHE:O	1:A:312:VAL:HG23	1.80	0.80
1:B:413:THR:CG2	1:B:414:ARG:N	2.45	0.80
1:C:218:PHE:HB2	1:C:259:GLN:CD	2.02	0.80
1:B:386:MET:HE2	1:B:391:ILE:HG13	1.60	0.79
1:C:280:TRP:CH2	1:C:425:GLN:NE2	2.50	0.79
1:A:368:ASP:OD2	1:A:372:LYS:HD3	1.83	0.79
1:C:298:LEU:CD2	1:C:422:LEU:HD11	2.12	0.79
1:B:323:ASP:OD1	1:B:403:ILE:HG21	1.83	0.78
1:B:250:ARG:HG2	1:B:253:LYS:HE2	1.66	0.77
1:C:154:LYS:CE	1:C:155:PHE:CE1	2.66	0.77
1:B:337:SER:O	1:B:340:ALA:HB3	1.84	0.77
1:A:216:GLN:O	1:A:220:MET:HG3	1.85	0.76
1:A:322:GLU:HA	1:A:325:ARG:HD2	1.68	0.76
1:B:185:ALA:O	1:B:189:GLU:HG2	1.85	0.76
1:C:218:PHE:CB	1:C:259:GLN:CD	2.54	0.76
1:A:158:LEU:HD22	1:B:398:GLU:OE1	1.85	0.76
1:B:132:TRP:CE2	1:B:189:GLU:HG3	2.20	0.76
1:B:245:GLU:HA	1:B:249:SER:HB2	1.68	0.76
1:C:260:MET:SD	1:C:289:ARG:HG2	2.26	0.76
1:C:218:PHE:CG	1:C:259:GLN:HG3	2.21	0.75
1:B:149:VAL:HG13	1:B:271:LEU:HD13	1.67	0.75
1:C:365:THR:HG23	1:C:368:ASP:HB2	1.69	0.74
1:C:263:VAL:HB	1:C:289:ARG:HH22	1.53	0.74
1:C:218:PHE:CD1	1:C:259:GLN:HG3	2.22	0.74
1:C:260:MET:HB3	1:C:289:ARG:HE	1.52	0.74
1:B:241:ARG:O	1:B:246:SER:HB2	1.87	0.74
1:C:158:LEU:O	1:C:163:ARG:NH1	2.20	0.74
1:C:360:PHE:HE2	1:C:387:SER:HA	1.53	0.74
1:A:257:LEU:HD23	1:A:289:ARG:HH11	1.51	0.74
1:C:350:PRO:HD3	1:C:401:LEU:CD2	2.18	0.74
1:C:218:PHE:CD2	1:C:259:GLN:HG3	2.23	0.73
1:C:317:CYS:CB	1:C:401:LEU:HB2	2.18	0.73
1:C:391:ILE:HG22	1:C:392:GLU:O	1.88	0.73
1:C:263:VAL:HB	1:C:289:ARG:HH21	1.51	0.73
1:A:429:THR:O	1:A:433:GLY:HA3	1.88	0.73
1:C:260:MET:HA	1:C:263:VAL:HG23	1.68	0.73
1:C:334:TYR:CD2	1:C:338:ASP:HB3	2.22	0.73
1:A:151:LEU:CD2	1:B:351:ILE:HG23	2.18	0.72
1:B:222:ARG:HD3	1:B:267:SER:HB2	1.70	0.72
1:C:350:PRO:HD3	1:C:401:LEU:HD21	1.71	0.72

*Continued on next page...*

*Continued from previous page...*

Atom-1	Atom-2	Interatomic distance (Å)	Clash overlap (Å)
1:C:197:VAL:HG13	1:C:198:SER:H	1.55	0.72
1:C:197:VAL:CG1	1:C:198:SER:N	2.52	0.72
1:B:235:ASP:HA	1:B:282:LEU:HD13	1.72	0.72
1:C:265:ASN:HD22	1:C:268:GLN:N	1.88	0.72
1:A:322:GLU:O	1:A:325:ARG:HB2	1.89	0.71
1:A:319:LEU:HD22	1:A:323:ASP:CB	2.20	0.71
1:C:154:LYS:CE	1:C:155:PHE:HZ	2.02	0.71
1:A:163:ARG:NH1	1:B:351:ILE:HD11	2.06	0.70
1:C:225:LYS:NZ	1:C:266:ASP:O	2.24	0.70
1:C:429:THR:O	1:C:433:GLY:CA	2.38	0.70
1:A:253:LYS:HG3	1:A:286:ILE:HD11	1.73	0.70
1:C:312:VAL:HG13	1:C:315:THR:HB	1.72	0.70
1:A:361:LYS:O	1:A:373:LEU:HA	1.92	0.70
1:C:196:SER:O	1:C:197:VAL:HG23	1.91	0.69
1:C:180:SER:H	4:C:501:EDO:H12	1.57	0.69
1:A:349:GLN:HB2	1:A:350:PRO:HD3	1.72	0.69
1:C:197:VAL:CG1	1:C:198:SER:H	2.05	0.69
1:C:167:SER:HA	1:C:271:LEU:HD12	1.73	0.69
1:A:319:LEU:HD23	1:A:403:ILE:CD1	2.23	0.69
1:B:136:ALA:O	2:B:501:AGS:N6	2.26	0.69
1:C:218:PHE:CE1	1:C:259:GLN:HG3	2.28	0.69
1:A:348:MET:O	1:A:352:ARG:HG3	1.93	0.69
1:A:130:VAL:O	1:A:185:ALA:HA	1.93	0.68
1:A:304:ARG:CG	1:A:339:ILE:HD11	2.23	0.68
1:A:147:GLU:CB	1:B:355:GLN:OE1	2.35	0.68
1:B:431:ASP:O	1:B:432:PHE:CG	2.47	0.68
1:C:218:PHE:CD1	1:C:259:GLN:CD	2.62	0.68
1:C:218:PHE:CE2	1:C:259:GLN:HG3	2.29	0.68
1:B:403:ILE:HG13	1:B:404:LYS:N	2.07	0.68
1:C:260:MET:HB3	1:C:289:ARG:NE	2.08	0.68
1:C:298:LEU:CD2	1:C:422:LEU:CD1	2.72	0.68
1:B:374:THR:HG22	1:B:375:PRO:HD2	1.74	0.67
1:A:304:ARG:HG2	1:A:339:ILE:CD1	2.20	0.67
1:A:262:GLY:O	1:A:266:ASP:HB2	1.95	0.67
1:C:156:PRO:C	1:C:158:LEU:H	1.98	0.67
1:B:203:VAL:O	1:B:207:MET:HG3	1.95	0.67
1:B:323:ASP:OD1	1:B:403:ILE:CG2	2.43	0.66
1:C:315:THR:HG21	1:C:347:LEU:HD22	1.76	0.66
1:C:218:PHE:HB2	1:C:259:GLN:OE1	1.92	0.66
1:A:215:LYS:HE3	1:A:255:GLU:OE2	1.96	0.66
1:B:225:LYS:NZ	1:B:267:SER:O	2.24	0.66

*Continued on next page...*

*Continued from previous page...*

Atom-1	Atom-2	Interatomic distance (Å)	Clash overlap (Å)
1:C:317:CYS:HB2	1:C:401:LEU:HB2	1.76	0.66
1:B:386:MET:HE2	1:B:391:ILE:CD1	2.26	0.66
1:C:167:SER:HB2	1:C:263:VAL:HG12	1.78	0.65
1:A:357:ALA:HB1	1:A:359:HIS:H	1.61	0.65
1:B:203:VAL:HG13	1:B:249:SER:OG	1.96	0.65
1:C:154:LYS:HE3	1:C:155:PHE:HZ	1.49	0.65
1:B:158:LEU:HD23	1:B:158:LEU:O	1.97	0.65
1:C:218:PHE:CZ	1:C:259:GLN:HG3	2.32	0.65
1:A:261:ASN:N	1:A:289:ARG:HH22	1.95	0.65
1:C:228:ILE:O	1:C:228:ILE:HG22	1.97	0.65
1:C:156:PRO:O	1:C:158:LEU:N	2.23	0.64
1:C:218:PHE:CG	1:C:259:GLN:OE1	2.49	0.64
1:C:375:PRO:O	1:C:376:CYS:HB3	1.98	0.64
1:B:413:THR:HG22	1:B:414:ARG:O	1.98	0.64
1:C:179:LYS:CB	4:C:501:EDO:H22	2.28	0.64
1:C:235:ASP:OD2	1:C:276:THR:HG23	1.98	0.64
1:C:323:ASP:O	1:C:327:LEU:HG	1.97	0.63
1:C:350:PRO:CD	1:C:401:LEU:HD21	2.28	0.63
1:A:185:ALA:O	1:A:189:GLU:HG2	1.99	0.63
1:A:211:GLU:OE2	1:A:251:ARG:HB3	1.99	0.63
1:C:280:TRP:HH2	1:C:425:GLN:HE21	1.47	0.63
1:C:429:THR:O	1:C:433:GLY:HA3	1.97	0.62
1:C:202:LEU:HD22	1:C:210:SER:OG	2.00	0.62
1:A:307:MET:HE1	1:A:336:GLY:HA2	1.81	0.62
1:B:365:THR:C	1:B:367:ASP:H	2.02	0.62
1:B:413:THR:CG2	1:B:414:ARG:H	2.11	0.62
1:B:351:ILE:N	1:B:351:ILE:HD12	2.14	0.62
1:B:386:MET:HE2	1:B:391:ILE:CG1	2.19	0.61
1:A:384:ILE:HD12	1:A:386:MET:HE2	1.81	0.61
1:A:282:LEU:HD23	1:A:287:ARG:HG3	1.80	0.61
1:B:244:GLY:O	1:B:248:ALA:HB3	2.01	0.61
1:C:317:CYS:HB3	1:C:401:LEU:HB2	1.82	0.61
1:B:428:PHE:O	1:B:432:PHE:HB2	2.01	0.61
1:C:171:LEU:HG	1:C:296:ILE:HD11	1.81	0.61
1:C:339:ILE:O	1:C:343:VAL:HG23	2.01	0.60
1:A:125:SER:O	1:A:126:GLU:HB3	2.01	0.60
1:A:132:TRP:CE2	1:A:189:GLU:HG3	2.37	0.60
1:C:432:PHE:HD1	1:C:437:ASN:HB3	1.66	0.60
1:B:388:TRP:HA	1:B:391:ILE:HD12	1.83	0.60
1:A:235:ASP:OD1	1:A:236:ALA:N	2.35	0.60
1:B:278:ILE:HG22	1:B:281:GLN:HB3	1.83	0.60

*Continued on next page...*

*Continued from previous page...*

Atom-1	Atom-2	Interatomic distance (Å)	Clash overlap (Å)
1:A:151:LEU:HD21	1:B:351:ILE:CG2	2.28	0.60
1:A:151:LEU:CD2	1:B:351:ILE:CG2	2.79	0.60
1:C:374:THR:HG23	1:C:375:PRO:HD2	1.83	0.60
1:A:372:LYS:HE2	1:A:397:LYS:HD3	1.84	0.59
1:C:307:MET:HA	1:C:310:ILE:HD12	1.83	0.59
1:B:211:GLU:HB2	1:B:255:GLU:HG2	1.85	0.59
1:C:260:MET:SD	1:C:289:ARG:CG	2.90	0.59
1:A:192:SER:OG	1:A:227:SER:HA	2.02	0.59
1:A:316:PRO:CG	1:A:398:GLU:OE2	2.51	0.59
1:B:343:VAL:O	1:B:347:LEU:HG	2.02	0.59
1:A:287:ARG:CD	1:A:293:ARG:HH12	2.16	0.59
1:C:127:LYS:CG	1:C:193:THR:HA	2.30	0.59
1:C:197:VAL:HG12	1:C:198:SER:N	2.18	0.59
1:C:280:TRP:HZ3	1:C:425:GLN:NE2	1.99	0.58
1:A:278:ILE:HG21	1:A:281:GLN:OE1	2.02	0.58
1:B:187:ALA:HA	1:B:228:ILE:HD12	1.83	0.58
1:C:249:SER:HA	1:C:252:ILE:HD13	1.84	0.58
1:A:257:LEU:HD23	1:A:289:ARG:NH1	2.18	0.58
1:A:403:ILE:HG22	1:A:407:LEU:CD1	2.33	0.58
1:A:132:TRP:CD2	1:A:189:GLU:HG3	2.39	0.58
1:B:375:PRO:CD	1:B:375:PRO:O	2.47	0.58
1:C:173:GLY:O	1:C:277:ASN:HA	2.04	0.58
1:C:326:THR:O	1:C:329:ALA:HB3	2.03	0.58
1:C:184:LYS:C	1:C:186:VAL:H	2.07	0.58
1:B:279:PRO:HD2	1:B:280:TRP:CE3	2.39	0.58
1:B:199:SER:HB3	1:B:233:GLN:O	2.03	0.57
1:A:404:LYS:HA	1:A:407:LEU:HD12	1.86	0.57
1:C:179:LYS:HB2	4:C:501:EDO:H22	1.86	0.57
1:A:173:GLY:O	1:A:277:ASN:HA	2.05	0.57
1:B:211:GLU:OE1	1:B:255:GLU:HB2	2.05	0.57
1:C:167:SER:HB3	1:C:268:GLN:HE22	1.67	0.57
1:C:265:ASN:HD22	1:C:268:GLN:HB2	1.70	0.57
1:C:218:PHE:HB2	1:C:259:GLN:NE2	2.19	0.57
1:C:360:PHE:HE2	1:C:387:SER:CA	2.16	0.57
1:A:215:LYS:CG	1:A:255:GLU:OE2	2.52	0.57
1:C:331:THR:HG21	1:C:339:ILE:HD13	1.85	0.57
1:B:146:LYS:HA	1:B:150:ILE:HD13	1.87	0.56
1:A:232:ASP:CG	1:A:233:GLN:HE21	2.08	0.56
1:B:279:PRO:HD2	1:B:280:TRP:CZ3	2.40	0.56
1:A:283:ASP:HB3	1:A:286:ILE:HD12	1.88	0.56
1:A:287:ARG:HD3	1:A:293:ARG:HH12	1.70	0.56

*Continued on next page...*



*Continued from previous page...*

Atom-1	Atom-2	Interatomic distance (Å)	Clash overlap (Å)
1:A:363:VAL:HG12	1:A:363:VAL:O	2.06	0.56
1:C:179:LYS:H	4:C:501:EDO:H11	1.70	0.56
1:C:320:THR:HG22	1:C:322:GLU:H	1.70	0.56
1:B:158:LEU:HD22	1:B:159:PHE:CE1	2.41	0.56
1:A:215:LYS:HG3	1:A:255:GLU:OE2	2.06	0.56
1:B:336:GLY:HA2	1:B:339:ILE:HD12	1.88	0.56
1:B:338:ASP:O	1:B:342:VAL:HG23	2.06	0.56
1:B:386:MET:HE2	1:B:391:ILE:HD11	1.87	0.56
1:C:222:ARG:HG2	1:C:266:ASP:OD2	2.06	0.56
1:B:386:MET:CE	1:B:391:ILE:CD1	2.82	0.55
1:C:168:GLY:HA3	1:C:290:PHE:HA	1.87	0.55
1:B:237:LEU:O	1:B:253:LYS:HD3	2.06	0.55
1:B:284:SER:HB2	1:B:288:ARG:NH1	2.21	0.55
1:B:365:THR:C	1:B:367:ASP:N	2.59	0.55
1:C:179:LYS:HB3	4:C:501:EDO:H22	1.89	0.55
1:C:204:SER:O	1:C:205:LYS:HG3	2.07	0.55
1:C:263:VAL:CB	1:C:289:ARG:NH2	2.61	0.55
1:C:293:ARG:O	1:C:434:GLN:NE2	2.40	0.55
1:B:374:THR:CG2	1:B:375:PRO:HD3	2.14	0.55
1:A:316:PRO:HG3	1:A:398:GLU:OE2	2.07	0.54
1:B:256:LEU:O	1:B:260:MET:HG3	2.07	0.54
1:C:195:PHE:CZ	1:C:220:MET:HB3	2.42	0.54
1:C:278:ILE:HG22	1:C:278:ILE:O	2.05	0.54
1:C:349:GLN:N	1:C:350:PRO:HD2	2.23	0.54
1:A:429:THR:O	1:A:433:GLY:CA	2.56	0.54
1:B:204:SER:HA	1:B:207:MET:CE	2.37	0.54
1:B:217:LEU:O	1:B:218:PHE:C	2.45	0.54
1:A:166:THR:HG23	1:A:291:GLU:OE1	2.07	0.54
1:A:384:ILE:CD1	1:A:386:MET:CE	2.82	0.54
1:B:203:VAL:O	1:B:203:VAL:HG12	2.06	0.54
1:C:246:SER:O	1:C:247:GLU:HG2	2.08	0.54
1:C:134:ASP:N	1:C:134:ASP:OD1	2.41	0.53
1:C:301:LEU:N	1:C:304:ARG:HH21	2.06	0.53
1:A:137:GLY:O	1:A:142:LYS:HE3	2.08	0.53
1:C:156:PRO:C	1:C:158:LEU:N	2.62	0.53
1:C:176:GLY:N	4:C:501:EDO:H21	2.21	0.53
1:A:174:PRO:HD2	1:A:177:THR:HG21	1.91	0.53
1:A:348:MET:HB2	1:A:352:ARG:CZ	2.39	0.53
1:C:265:ASN:ND2	1:C:268:GLN:HB2	2.23	0.53
1:A:331:THR:O	1:A:334:TYR:HB2	2.08	0.53
1:B:263:VAL:HG22	1:B:270:VAL:HG22	1.90	0.53

*Continued on next page...*

*Continued from previous page...*

Atom-1	Atom-2	Interatomic distance (Å)	Clash overlap (Å)
1:A:151:LEU:HD12	1:A:155:PHE:HD1	1.74	0.53
1:B:131:LYS:HA	1:B:189:GLU:OE2	2.09	0.53
2:B:501:AGS:O1A	2:B:501:AGS:H3'	2.10	0.52
1:C:139:GLU:HA	1:C:142:LYS:HE3	1.91	0.52
1:C:177:THR:OG1	1:C:179:LYS:NZ	2.34	0.52
1:B:392:GLU:O	1:B:395:GLU:HG2	2.10	0.52
1:C:218:PHE:HB3	1:C:259:GLN:OE1	2.08	0.52
1:C:278:ILE:HG21	1:C:281:GLN:OE1	2.09	0.52
1:B:179:LYS:HE2	1:B:277:ASN:OD1	2.10	0.52
1:B:240:THR:HA	1:B:250:ARG:HH22	1.74	0.52
1:C:434:GLN:O	1:C:435:GLU:HB2	2.10	0.52
1:B:358:THR:HG23	1:B:359:HIS:N	2.24	0.52
1:B:377:SER:OG	1:B:380:ASP:HB2	2.09	0.52
1:C:323:ASP:HB3	1:C:403:ILE:HG12	1.92	0.51
1:C:154:LYS:HE2	1:C:155:PHE:CZ	2.42	0.51
1:C:199:SER:C	1:C:201:ASP:H	2.13	0.51
1:C:278:ILE:HG22	1:C:281:GLN:HB2	1.91	0.51
1:A:368:ASP:OD2	1:A:372:LYS:CD	2.55	0.51
1:A:265:ASN:O	1:A:267:SER:N	2.44	0.51
1:A:283:ASP:OD2	1:A:285:ALA:HB3	2.11	0.51
1:B:250:ARG:HH11	1:B:253:LYS:NZ	2.08	0.51
1:B:250:ARG:HA	1:B:253:LYS:HG3	1.93	0.51
1:C:225:LYS:NZ	1:C:267:SER:HB2	2.25	0.51
1:C:298:LEU:HD23	1:C:422:LEU:CD1	2.40	0.51
1:B:374:THR:HG22	1:B:375:PRO:O	2.11	0.50
1:C:166:THR:HG22	1:C:167:SER:N	2.27	0.50
1:B:130:VAL:O	1:B:185:ALA:HA	2.10	0.50
1:B:365:THR:O	1:B:367:ASP:N	2.45	0.50
1:C:180:SER:N	4:C:501:EDO:H12	2.25	0.50
1:A:143:GLU:OE2	1:B:355:GLN:NE2	2.45	0.50
1:A:321:LYS:O	1:A:325:ARG:HG3	2.11	0.50
1:C:359:HIS:CE1	1:C:378:PRO:HG3	2.46	0.50
1:A:307:MET:HE2	1:A:339:ILE:HD12	1.92	0.50
1:B:208:GLY:C	1:B:210:SER:H	2.13	0.50
1:A:151:LEU:HD12	1:A:155:PHE:CD1	2.47	0.50
1:B:246:SER:HA	1:B:250:ARG:HG3	1.94	0.50
1:C:264:GLY:HA2	1:C:265:ASN:CB	2.27	0.50
1:C:311:ASN:HB3	1:C:343:VAL:HG11	1.94	0.50
1:B:220:MET:O	1:B:224:ASN:ND2	2.29	0.49
1:C:429:THR:O	1:C:433:GLY:N	2.45	0.49
1:A:354:ILE:HD11	1:A:398:GLU:HA	1.94	0.49

*Continued on next page...*

*Continued from previous page...*

Atom-1	Atom-2	Interatomic distance (Å)	Clash overlap (Å)
1:C:138:LEU:O	1:C:142:LYS:HE2	2.12	0.49
1:A:279:PRO:HB2	1:A:428:PHE:CD2	2.47	0.49
1:A:364:SER:OG	1:A:371:ARG:HA	2.13	0.49
1:C:171:LEU:CG	1:C:296:ILE:HD11	2.43	0.49
1:A:360:PHE:HB2	1:A:386:MET:HE3	1.94	0.49
1:B:284:SER:HB2	1:B:288:ARG:HH11	1.76	0.49
1:C:360:PHE:CE2	1:C:387:SER:HA	2.41	0.49
1:A:165:PRO:HG2	1:A:268:GLN:OE1	2.12	0.49
1:C:202:LEU:HB3	1:C:207:MET:HG3	1.95	0.49
1:B:203:VAL:O	1:B:203:VAL:CG1	2.60	0.49
1:C:326:THR:HG22	1:C:330:MET:CE	2.42	0.49
1:A:131:LYS:HA	1:A:189:GLU:OE2	2.12	0.48
1:C:167:SER:HB2	1:C:263:VAL:CG1	2.43	0.48
1:C:260:MET:O	1:C:289:ARG:NH2	2.36	0.48
1:C:138:LEU:HD23	1:C:297:PRO:HD2	1.95	0.48
1:C:319:LEU:CD2	1:C:403:ILE:HG13	2.43	0.48
1:A:349:GLN:NE2	1:A:408:LYS:HD3	2.28	0.48
1:C:165:PRO:HD2	1:C:268:GLN:HG2	1.94	0.48
1:C:195:PHE:HE2	1:C:220:MET:C	2.16	0.48
1:C:358:THR:HB	1:C:359:HIS:CE1	2.48	0.48
1:A:319:LEU:HD21	1:A:403:ILE:HD13	1.92	0.48
1:B:131:LYS:HE3	1:B:133:GLU:HB2	1.94	0.48
1:C:222:ARG:HA	1:C:225:LYS:HE3	1.95	0.48
1:B:403:ILE:CG1	1:B:404:LYS:N	2.77	0.48
1:A:209:GLU:HB3	1:A:212:LYS:HD3	1.95	0.48
1:C:124:LEU:HB2	1:C:196:SER:HB3	1.96	0.48
1:B:135:VAL:HG22	1:B:181:TYR:CD2	2.48	0.48
1:A:365:THR:C	1:A:367:ASP:H	2.17	0.47
1:C:228:ILE:O	1:C:228:ILE:CG2	2.61	0.47
1:C:374:THR:CG2	1:C:375:PRO:HD2	2.44	0.47
1:B:347:LEU:HA	1:B:401:LEU:HD21	1.95	0.47
1:C:179:LYS:N	4:C:501:EDO:H11	2.28	0.47
1:C:287:ARG:CG	1:C:293:ARG:NH2	2.53	0.47
1:C:360:PHE:HD2	1:C:386:MET:HG3	1.78	0.47
1:B:231:ILE:CG2	1:B:234:VAL:HG12	2.44	0.47
1:B:155:PHE:N	1:B:156:PRO:HD3	2.30	0.47
1:C:436:GLY:HA3	1:C:437:ASN:HA	1.50	0.47
1:B:241:ARG:HB3	1:B:245:GLU:OE1	2.14	0.47
1:C:130:VAL:H	1:C:188:THR:HG21	1.78	0.47
1:C:301:LEU:HD12	1:C:304:ARG:NH2	2.29	0.47
1:C:171:LEU:CD2	1:C:296:ILE:HD11	2.45	0.47

*Continued on next page...*

*Continued from previous page...*

Atom-1	Atom-2	Interatomic distance (Å)	Clash overlap (Å)
1:B:173:GLY:O	1:B:277:ASN:HA	2.14	0.47
1:A:135:VAL:HG22	1:A:181:TYR:HD2	1.80	0.47
1:C:385:GLU:O	1:C:386:MET:CB	2.63	0.47
1:A:335:SER:O	1:A:338:ASP:HB2	2.15	0.47
1:B:204:SER:HA	1:B:207:MET:HE2	1.97	0.47
1:B:231:ILE:HG22	1:B:234:VAL:HG12	1.97	0.46
1:A:276:THR:O	1:A:276:THR:HG23	2.13	0.46
1:C:125:SER:O	1:C:126:GLU:HB2	2.16	0.46
1:A:432:PHE:O	1:A:433:GLY:C	2.54	0.46
1:A:167:SER:O	1:A:271:LEU:HD12	2.15	0.46
1:B:210:SER:HB2	1:B:252:ILE:HG12	1.98	0.46
1:A:379:GLY:O	1:A:380:ASP:HB2	2.16	0.46
1:B:234:VAL:HG22	1:B:275:ALA:O	2.16	0.45
1:B:392:GLU:HB2	1:B:395:GLU:OE2	2.16	0.45
1:B:420:ASP:C	1:B:422:LEU:H	2.18	0.45
1:C:298:LEU:HD22	1:C:422:LEU:CD1	2.44	0.45
1:B:306:THR:HG22	1:B:310:ILE:CD1	2.46	0.45
1:A:135:VAL:HG11	1:A:182:LEU:HD13	1.97	0.45
1:B:204:SER:HA	1:B:207:MET:HE3	1.99	0.45
1:B:306:THR:HG22	1:B:310:ILE:HD12	1.99	0.45
1:C:130:VAL:N	1:C:188:THR:HG21	2.31	0.45
1:C:154:LYS:C	1:C:156:PRO:HD3	2.35	0.45
1:C:225:LYS:HZ2	1:C:267:SER:HB2	1.81	0.45
1:C:403:ILE:H	1:C:403:ILE:HD12	1.81	0.45
1:A:348:MET:HB2	1:A:352:ARG:NH1	2.32	0.45
1:C:265:ASN:HD22	1:C:268:GLN:H	1.61	0.45
1:A:357:ALA:HB1	1:A:359:HIS:N	2.28	0.45
1:A:384:ILE:HD12	1:A:386:MET:HE1	1.95	0.45
1:C:287:ARG:O	1:C:293:ARG:NH2	2.50	0.45
1:C:210:SER:O	1:C:252:ILE:HG13	2.17	0.45
1:C:403:ILE:HD12	1:C:403:ILE:N	2.32	0.45
1:A:330:MET:O	1:A:330:MET:HG2	2.18	0.45
1:B:178:GLY:HA2	2:B:501:AGS:O1A	2.16	0.45
1:C:293:ARG:HD2	1:C:432:PHE:O	2.17	0.45
1:C:360:PHE:CD1	1:C:375:PRO:HA	2.52	0.44
1:A:120:SER:HB3	1:A:121:SER:H	1.58	0.44
1:C:127:LYS:HG2	1:C:193:THR:CA	2.36	0.44
1:A:135:VAL:HG22	1:A:181:TYR:CD2	2.51	0.44
1:C:298:LEU:HD23	1:C:422:LEU:HD12	2.00	0.44
1:C:323:ASP:HB3	1:C:403:ILE:CG1	2.47	0.44
1:A:260:MET:C	1:A:289:ARG:HH22	2.21	0.44

*Continued on next page...*

*Continued from previous page...*

Atom-1	Atom-2	Interatomic distance (Å)	Clash overlap (Å)
1:A:358:THR:O	1:A:385:GLU:HA	2.18	0.44
1:B:359:HIS:HA	1:B:384:ILE:O	2.18	0.44
1:C:235:ASP:OD2	1:C:276:THR:CG2	2.63	0.44
1:B:143:GLU:O	1:B:144:ALA:C	2.56	0.44
1:B:197:VAL:HG21	1:B:202:LEU:HD12	1.98	0.44
1:B:166:THR:HG23	1:B:291:GLU:OE1	2.17	0.44
1:C:182:LEU:O	1:C:182:LEU:HG	2.18	0.44
1:C:235:ASP:HB3	1:C:276:THR:CG2	2.48	0.44
1:C:385:GLU:O	1:C:386:MET:HB3	2.17	0.44
1:A:174:PRO:HB3	1:A:421:ASP:OD2	2.18	0.44
1:B:307:MET:SD	1:B:336:GLY:HA2	2.58	0.44
1:B:334:TYR:CD2	1:B:338:ASP:HB3	2.53	0.44
1:B:348:MET:O	1:B:352:ARG:HG3	2.17	0.44
1:B:374:THR:HG22	1:B:375:PRO:CD	2.36	0.44
1:C:327:LEU:HA	1:C:330:MET:HG2	2.00	0.43
1:C:179:LYS:HE2	4:C:501:EDO:H22	1.99	0.43
1:C:277:ASN:C	1:C:278:ILE:HG13	2.38	0.43
1:C:238:THR:OG1	1:C:283:ASP:HB2	2.19	0.43
1:C:320:THR:O	1:C:323:ASP:N	2.47	0.43
1:A:278:ILE:O	1:A:278:ILE:HG22	2.18	0.43
1:B:123:ILE:HD13	1:B:217:LEU:HB2	2.00	0.43
1:B:299:PRO:HB2	1:B:304:ARG:HG3	2.00	0.43
1:C:174:PRO:HB3	1:C:417:VAL:HG21	2.00	0.43
1:C:222:ARG:HE	1:C:266:ASP:HB3	1.84	0.43
1:B:307:MET:O	1:B:308:PHE:C	2.57	0.43
1:B:386:MET:CE	1:B:391:ILE:HD11	2.47	0.43
1:B:402:THR:O	1:B:403:ILE:C	2.56	0.43
1:A:138:LEU:HD21	1:A:296:ILE:HG23	2.00	0.43
1:A:199:SER:HB2	1:A:233:GLN:HB2	2.00	0.43
1:A:295:TYR:CE2	1:A:297:PRO:HB3	2.54	0.43
1:C:299:PRO:HB2	1:C:304:ARG:HG3	2.00	0.43
1:A:349:GLN:HG3	1:A:405:ASP:OD1	2.19	0.43
1:A:384:ILE:CD1	1:A:386:MET:HE1	2.49	0.43
1:B:131:LYS:HE3	1:B:133:GLU:CB	2.49	0.43
1:B:351:ILE:HD12	1:B:351:ILE:H	1.82	0.43
1:B:386:MET:HE3	1:B:390:ASP:O	2.19	0.43
1:A:143:GLU:OE1	1:A:143:GLU:HA	2.19	0.42
1:B:431:ASP:O	1:B:432:PHE:CD2	2.71	0.42
1:C:252:ILE:H	1:C:252:ILE:HD12	1.84	0.42
1:B:351:ILE:N	1:B:351:ILE:CD1	2.81	0.42
1:C:265:ASN:HD22	1:C:268:GLN:CB	2.33	0.42

*Continued on next page...*

*Continued from previous page...*

Atom-1	Atom-2	Interatomic distance (Å)	Clash overlap (Å)
1:C:350:PRO:HG3	1:C:401:LEU:HD21	2.00	0.42
1:A:402:THR:O	1:A:405:ASP:HB2	2.19	0.42
1:C:167:SER:HB3	1:C:268:GLN:NE2	2.34	0.42
1:C:326:THR:HG22	1:C:330:MET:HE2	2.02	0.42
1:A:189:GLU:HA	1:A:189:GLU:OE1	2.20	0.42
1:B:170:LEU:HD12	1:B:274:GLY:O	2.20	0.42
1:C:195:PHE:CE2	1:C:220:MET:CB	2.91	0.42
1:C:279:PRO:HD2	1:C:425:GLN:HE22	1.85	0.42
1:C:287:ARG:HG3	1:C:293:ARG:HE	1.83	0.42
1:A:197:VAL:HG21	1:A:202:LEU:HD22	2.02	0.42
1:B:323:ASP:CG	1:B:403:ILE:CG2	2.88	0.42
1:C:410:ILE:O	1:C:413:THR:O	2.37	0.42
1:A:125:SER:O	1:A:126:GLU:CB	2.64	0.42
1:B:131:LYS:HG3	1:B:133:GLU:HB2	2.02	0.42
1:C:182:LEU:O	1:C:186:VAL:HG23	2.20	0.42
1:C:215:LYS:HA	1:C:259:GLN:NE2	2.35	0.42
1:A:190:ALA:O	1:A:191:ASN:C	2.58	0.41
1:C:292:ARG:HE	1:C:292:ARG:HB2	1.61	0.41
1:B:263:VAL:CG2	1:B:270:VAL:CG2	2.98	0.41
1:C:322:GLU:O	1:C:326:THR:OG1	2.38	0.41
1:A:298:LEU:HD21	1:A:417:VAL:HG21	2.03	0.41
1:B:214:VAL:HG11	1:B:255:GLU:HG3	2.02	0.41
2:B:501:AGS:N3	2:B:501:AGS:H2'	2.36	0.41
1:B:278:ILE:N	1:B:278:ILE:HD12	2.35	0.41
1:B:402:THR:HB	1:B:404:LYS:HB2	2.02	0.41
1:B:190:ALA:O	1:B:192:SER:N	2.54	0.41
1:C:375:PRO:O	1:C:376:CYS:CB	2.65	0.41
1:C:138:LEU:CD2	1:C:297:PRO:HD2	2.50	0.41
1:C:199:SER:C	1:C:201:ASP:N	2.74	0.41
1:A:163:ARG:HH11	1:B:351:ILE:HD11	1.81	0.41
1:B:263:VAL:HA	1:B:268:GLN:HB3	2.03	0.41
1:C:127:LYS:HA	1:C:128:PRO:HD3	1.80	0.41
1:C:132:TRP:HB3	1:C:142:LYS:HD2	2.02	0.41
1:C:331:THR:O	1:C:332:GLU:C	2.59	0.41
1:C:232:ASP:OD1	1:C:275:ALA:HB3	2.21	0.41
1:C:417:VAL:HG13	1:C:421:ASP:HB3	2.03	0.41
1:A:169:ILE:HB	1:A:273:LEU:HD23	2.02	0.41
1:A:319:LEU:CD2	1:A:403:ILE:CD1	2.80	0.41
1:B:203:VAL:HG21	1:B:237:LEU:HD23	2.02	0.41
1:A:260:MET:C	1:A:289:ARG:NH2	2.74	0.40
1:A:349:GLN:HE22	1:A:408:LYS:HE2	1.85	0.40

*Continued on next page...*

Continued from previous page...

Atom-1	Atom-2	Interatomic distance (Å)	Clash overlap (Å)
1:B:263:VAL:O	1:B:268:GLN:HG2	2.20	0.40
1:B:265:ASN:O	1:B:268:GLN:NE2	2.54	0.40
1:C:184:LYS:O	1:C:186:VAL:N	2.50	0.40
1:C:214:VAL:HG11	1:C:255:GLU:O	2.21	0.40
1:C:360:PHE:CE2	1:C:386:MET:O	2.74	0.40
2:A:501:AGS:O2A	2:A:501:AGS:O2G	2.40	0.40
1:B:249:SER:O	1:B:253:LYS:HG3	2.21	0.40
1:B:413:THR:CG2	1:B:414:ARG:O	2.68	0.40
1:C:177:THR:H	4:C:501:EDO:H21	1.86	0.40
1:B:301:LEU:O	1:B:302:ALA:C	2.60	0.40
1:C:246:SER:O	1:C:247:GLU:CB	2.68	0.40
1:C:360:PHE:CD2	1:C:386:MET:O	2.75	0.40
1:B:353:LYS:O	1:B:357:ALA:HB2	2.21	0.40
1:B:387:SER:O	1:B:390:ASP:HB2	2.21	0.40
1:C:148:ALA:HB2	1:C:292:ARG:NH1	2.36	0.40
1:C:185:ALA:O	1:C:189:GLU:HG3	2.21	0.40

There are no symmetry-related clashes.

## 5.3 Torsion angles [i](#)

### 5.3.1 Protein backbone [i](#)

In the following table, the Percentiles column shows the percent Ramachandran outliers of the chain as a percentile score with respect to all X-ray entries followed by that with respect to entries of similar resolution.

The Analysed column shows the number of residues for which the backbone conformation was analysed, and the total number of residues.

Mol	Chain	Analysed	Favoured	Allowed	Outliers	Percentiles	
1	A	317/340 (93%)	267 (84%)	40 (13%)	10 (3%)	4	23
1	B	314/340 (92%)	252 (80%)	47 (15%)	15 (5%)	2	14
1	C	306/340 (90%)	227 (74%)	59 (19%)	20 (6%)	1	9
All	All	937/1020 (92%)	746 (80%)	146 (16%)	45 (5%)	2	14

All (45) Ramachandran outliers are listed below:

Mol	Chain	Res	Type
1	A	266	ASP

Continued on next page...

*Continued from previous page...*

<b>Mol</b>	<b>Chain</b>	<b>Res</b>	<b>Type</b>
1	B	191	ASN
1	B	210	SER
1	B	291	GLU
1	B	366	GLU
1	B	390	ASP
1	B	432	PHE
1	C	138	LEU
1	C	157	HIS
1	C	197	VAL
1	C	386	MET
1	C	403	ILE
1	A	366	GLU
1	A	380	ASP
1	A	433	GLY
1	A	435	GLU
1	B	161	GLY
1	B	238	THR
1	B	268	GLN
1	C	185	ALA
1	C	247	GLU
1	B	133	GLU
1	B	139	GLU
1	C	154	LYS
1	C	156	PRO
1	C	301	LEU
1	C	321	LYS
1	C	332	GLU
1	A	126	GLU
1	A	238	THR
1	A	358	THR
1	B	143	GLU
1	B	427	GLN
1	C	237	LEU
1	C	246	SER
1	A	121	SER
1	C	189	GLU
1	C	200	SER
1	C	297	PRO
1	C	383	ALA
1	A	318	VAL
1	B	265	ASN
1	B	239	GLY

*Continued on next page...*



*Continued from previous page...*

Mol	Chain	Res	Type
1	C	310	ILE
1	C	354	ILE

### 5.3.2 Protein sidechains [i](#)

In the following table, the Percentiles column shows the percent sidechain outliers of the chain as a percentile score with respect to all X-ray entries followed by that with respect to entries of similar resolution.

The Analysed column shows the number of residues for which the sidechain conformation was analysed, and the total number of residues.

Mol	Chain	Analysed	Rotameric	Outliers	Percentiles	
1	A	272/287 (95%)	262 (96%)	10 (4%)	34	62
1	B	270/287 (94%)	260 (96%)	10 (4%)	34	62
1	C	266/287 (93%)	246 (92%)	20 (8%)	13	39
All	All	808/861 (94%)	768 (95%)	40 (5%)	24	55

All (40) residues with a non-rotameric sidechain are listed below:

Mol	Chain	Res	Type
1	A	120	SER
1	A	121	SER
1	A	157	HIS
1	A	193	THR
1	A	257	LEU
1	A	263	VAL
1	A	267	SER
1	A	271	LEU
1	A	384	ILE
1	A	385	GLU
1	B	138	LEU
1	B	206	TRP
1	B	209	GLU
1	B	227	SER
1	B	268	GLN
1	B	270	VAL
1	B	315	THR
1	B	347	LEU
1	B	390	ASP
1	B	402	THR

*Continued on next page...*

*Continued from previous page...*

Mol	Chain	Res	Type
1	C	130	VAL
1	C	134	ASP
1	C	138	LEU
1	C	158	LEU
1	C	206	TRP
1	C	228	ILE
1	C	238	THR
1	C	254	THR
1	C	270	VAL
1	C	276	THR
1	C	323	ASP
1	C	326	THR
1	C	331	THR
1	C	358	THR
1	C	363	VAL
1	C	364	SER
1	C	365	THR
1	C	377	SER
1	C	403	ILE
1	C	422	LEU

Sometimes sidechains can be flipped to improve hydrogen bonding and reduce clashes. All (9) such sidechains are listed below:

Mol	Chain	Res	Type
1	A	349	GLN
1	B	259	GLN
1	B	261	ASN
1	B	268	GLN
1	C	261	ASN
1	C	265	ASN
1	C	268	GLN
1	C	359	HIS
1	C	425	GLN

### 5.3.3 RNA [i](#)

There are no RNA molecules in this entry.

## 5.4 Non-standard residues in protein, DNA, RNA chains [i](#)

There are no non-standard protein/DNA/RNA residues in this entry.

## 5.5 Carbohydrates [i](#)

There are no monosaccharides in this entry.

## 5.6 Ligand geometry [i](#)

Of 6 ligands modelled in this entry, 3 are monoatomic - leaving 3 for Mogul analysis.

In the following table, the Counts columns list the number of bonds (or angles) for which Mogul statistics could be retrieved, the number of bonds (or angles) that are observed in the model and the number of bonds (or angles) that are defined in the Chemical Component Dictionary. The Link column lists molecule types, if any, to which the group is linked. The Z score for a bond length (or angle) is the number of standard deviations the observed value is removed from the expected value. A bond length (or angle) with  $|Z| > 2$  is considered an outlier worth inspection. RMSZ is the root-mean-square of all Z scores of the bond lengths (or angles).

Mol	Type	Chain	Res	Link	Bond lengths			Bond angles		
					Counts	RMSZ	# Z  > 2	Counts	RMSZ	# Z  > 2
2	AGS	A	501	-	26,33,33	1.79	4 (15%)	26,52,52	1.29	5 (19%)
4	EDO	C	501	-	3,3,3	0.49	0	2,2,2	0.24	0
2	AGS	B	501	-	26,33,33	1.94	4 (15%)	26,52,52	1.29	2 (7%)

In the following table, the Chirals column lists the number of chiral outliers, the number of chiral centers analysed, the number of these observed in the model and the number defined in the Chemical Component Dictionary. Similar counts are reported in the Torsion and Rings columns. '2' means no outliers of that kind were identified.

Mol	Type	Chain	Res	Link	Chirals	Torsions	Rings
2	AGS	A	501	-	-	4/17/38/38	0/3/3/3
4	EDO	C	501	-	-	1/1/1/1	-
2	AGS	B	501	-	-	8/17/38/38	0/3/3/3

All (8) bond length outliers are listed below:

Mol	Chain	Res	Type	Atoms	Z	Observed(Å)	Ideal(Å)
2	B	501	AGS	PG-S1G	8.18	2.08	1.90
2	A	501	AGS	PG-S1G	7.47	2.06	1.90
2	B	501	AGS	C5-C4	2.73	1.48	1.40
2	A	501	AGS	C5-C4	2.60	1.47	1.40

*Continued on next page...*

Continued from previous page...

Mol	Chain	Res	Type	Atoms	Z	Observed(Å)	Ideal(Å)
2	B	501	AGS	C2-N3	2.09	1.35	1.32
2	B	501	AGS	O4'-C1'	2.08	1.44	1.41
2	A	501	AGS	O4'-C1'	2.04	1.43	1.41
2	A	501	AGS	C2-N3	2.01	1.35	1.32

All (7) bond angle outliers are listed below:

Mol	Chain	Res	Type	Atoms	Z	Observed(°)	Ideal(°)
2	B	501	AGS	N3-C2-N1	-3.79	122.75	128.68
2	A	501	AGS	N3-C2-N1	-3.04	123.93	128.68
2	B	501	AGS	C4-C5-N7	-2.51	106.78	109.40
2	A	501	AGS	O3G-PG-O3B	2.29	112.29	104.64
2	A	501	AGS	PA-O3A-PB	-2.09	125.66	132.83
2	A	501	AGS	C4-C5-N7	-2.04	107.27	109.40
2	A	501	AGS	O3'-C3'-C4'	2.03	116.91	111.05

There are no chirality outliers.

All (13) torsion outliers are listed below:

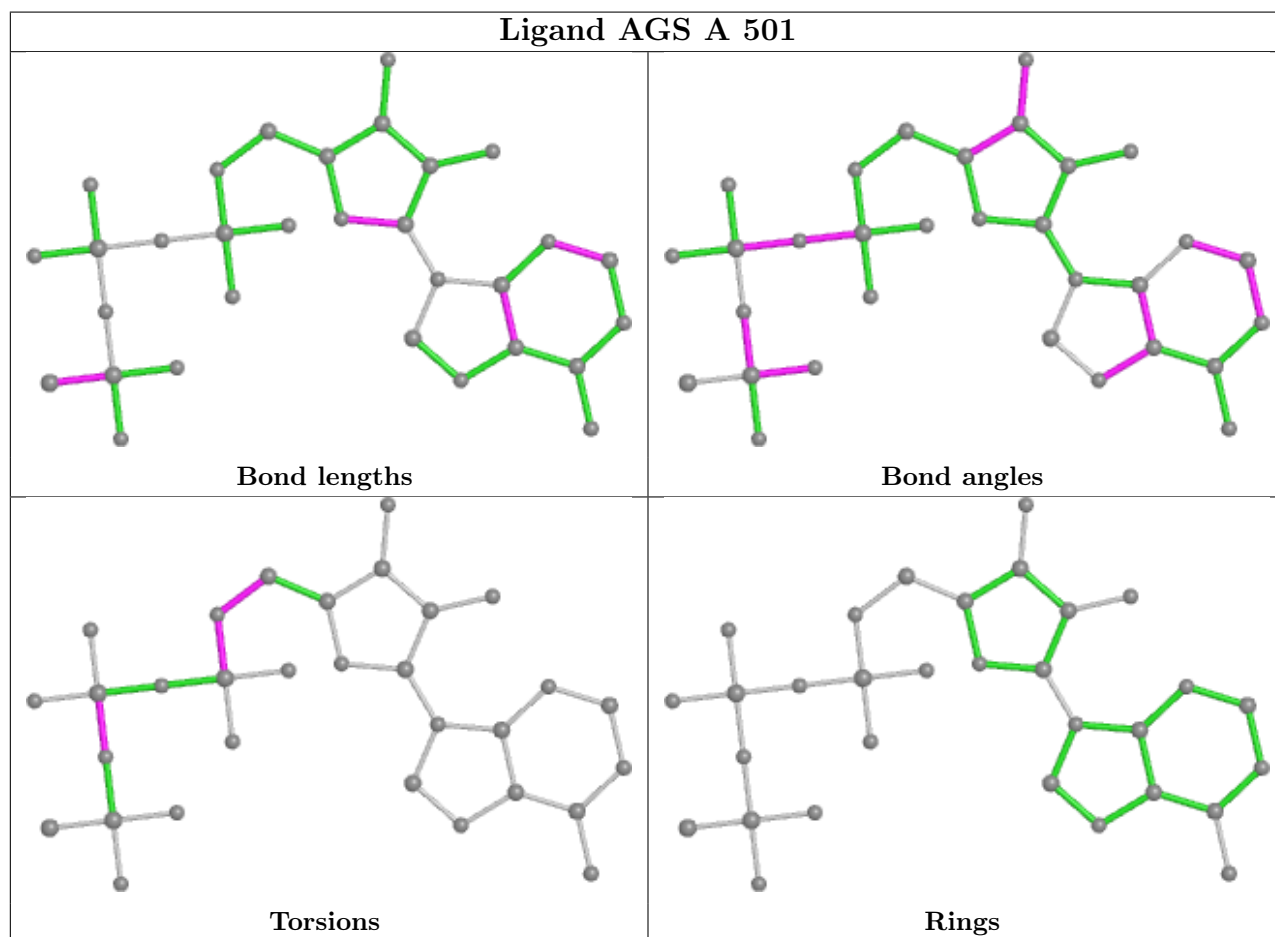
Mol	Chain	Res	Type	Atoms
2	A	501	AGS	C5'-O5'-PA-O3A
2	B	501	AGS	C5'-O5'-PA-O3A
2	B	501	AGS	PG-O3B-PB-O1B
2	B	501	AGS	PA-O3A-PB-O3B
2	B	501	AGS	PB-O3A-PA-O5'
2	B	501	AGS	C4'-C5'-O5'-PA
2	A	501	AGS	C5'-O5'-PA-O1A
2	B	501	AGS	C5'-O5'-PA-O1A
2	A	501	AGS	C4'-C5'-O5'-PA
2	A	501	AGS	PG-O3B-PB-O2B
2	B	501	AGS	PG-O3B-PB-O2B
2	B	501	AGS	PA-O3A-PB-O1B
4	C	501	EDO	O1-C1-C2-O2

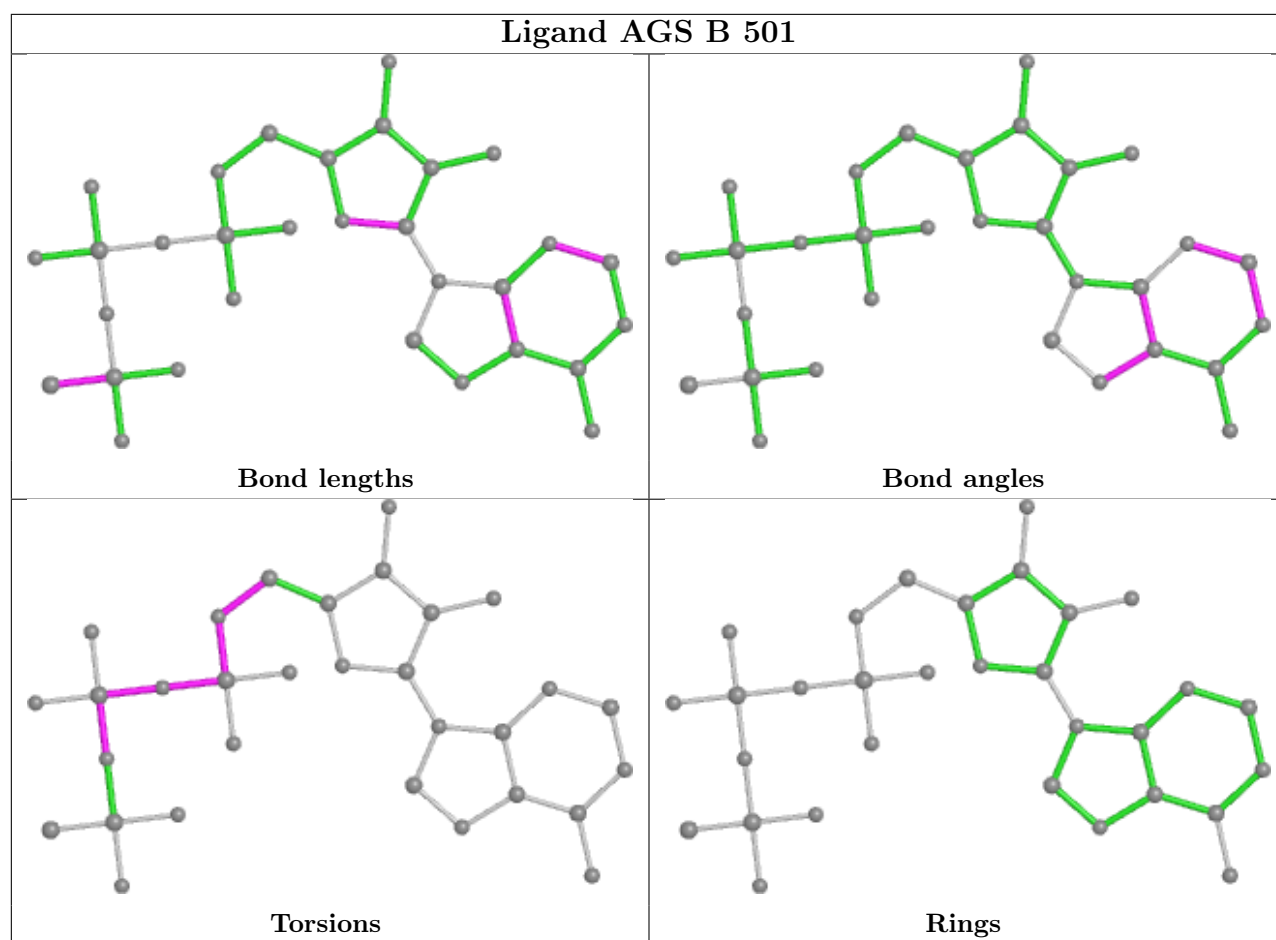
There are no ring outliers.

3 monomers are involved in 15 short contacts:

Mol	Chain	Res	Type	Clashes	Symm-Clashes
2	A	501	AGS	1	0
4	C	501	EDO	10	0
2	B	501	AGS	4	0

The following is a two-dimensional graphical depiction of Mogul quality analysis of bond lengths, bond angles, torsion angles, and ring geometry for all instances of the Ligand of Interest. In addition, ligands with molecular weight > 250 and outliers as shown on the validation Tables will also be included. For torsion angles, if less than 5% of the Mogul distribution of torsion angles is within 10 degrees of the torsion angle in question, then that torsion angle is considered an outlier. Any bond that is central to one or more torsion angles identified as an outlier by Mogul will be highlighted in the graph. For rings, the root-mean-square deviation (RMSD) between the ring in question and similar rings identified by Mogul is calculated over all ring torsion angles. If the average RMSD is greater than 60 degrees and the minimal RMSD between the ring in question and any Mogul-identified rings is also greater than 60 degrees, then that ring is considered an outlier. The outliers are highlighted in purple. The color gray indicates Mogul did not find sufficient equivalents in the CSD to analyse the geometry.





## 5.7 Other polymers [i](#)

There are no such residues in this entry.

## 5.8 Polymer linkage issues [i](#)

There are no chain breaks in this entry.

## 6 Fit of model and data

### 6.1 Protein, DNA and RNA chains

In the following table, the column labelled ‘#RSRZ > 2’ contains the number (and percentage) of RSRZ outliers, followed by percent RSRZ outliers for the chain as percentile scores relative to all X-ray entries and entries of similar resolution. The OWAB column contains the minimum, median, 95<sup>th</sup> percentile and maximum values of the occupancy-weighted average B-factor per residue. The column labelled ‘Q < 0.9’ lists the number of (and percentage) of residues with an average occupancy less than 0.9.

Mol	Chain	Analysed	<RSRZ>	#RSRZ>2	OWAB(Å <sup>2</sup> )	Q<0.9
1	A	319/340 (93%)	0.23	7 (2%) 62 59	42, 68, 108, 124	0
1	B	316/340 (92%)	0.28	6 (1%) 66 64	51, 82, 122, 138	0
1	C	310/340 (91%)	0.58	26 (8%) 11 11	74, 105, 130, 136	0
All	All	945/1020 (92%)	0.36	39 (4%) 37 34	42, 84, 126, 138	0

All (39) RSRZ outliers are listed below:

Mol	Chain	Res	Type	RSRZ
1	B	243	GLU	5.6
1	B	240	THR	5.2
1	C	181	TYR	4.8
1	A	242	GLY	4.7
1	B	242	GLY	4.3
1	C	231	ILE	4.0
1	B	244	GLY	3.8
1	A	119	LEU	3.8
1	C	208	GLY	3.7
1	C	417	VAL	3.6
1	C	135	VAL	3.6
1	C	400	ASP	3.4
1	C	229	ILE	3.2
1	B	194	PHE	3.0
1	C	196	SER	2.9
1	C	183	ALA	2.7
1	C	311	ASN	2.7
1	C	263	VAL	2.6
1	C	186	VAL	2.6
1	C	210	SER	2.5
1	A	435	GLU	2.5
1	A	239	GLY	2.5
1	C	212	LYS	2.4

*Continued on next page...*

*Continued from previous page...*

Mol	Chain	Res	Type	RSRZ
1	C	136	ALA	2.4
1	A	268	GLN	2.4
1	C	406	PHE	2.3
1	A	243	GLU	2.3
1	A	245	GLU	2.3
1	B	239	GLY	2.3
1	C	272	VAL	2.2
1	C	180	SER	2.2
1	C	184	LYS	2.2
1	C	307	MET	2.2
1	C	399	PRO	2.2
1	C	369	GLU	2.1
1	C	194	PHE	2.1
1	C	197	VAL	2.0
1	C	360	PHE	2.0
1	C	209	GLU	2.0

## 6.2 Non-standard residues in protein, DNA, RNA chains [i](#)

There are no non-standard protein/DNA/RNA residues in this entry.

## 6.3 Carbohydrates [i](#)

There are no monosaccharides in this entry.

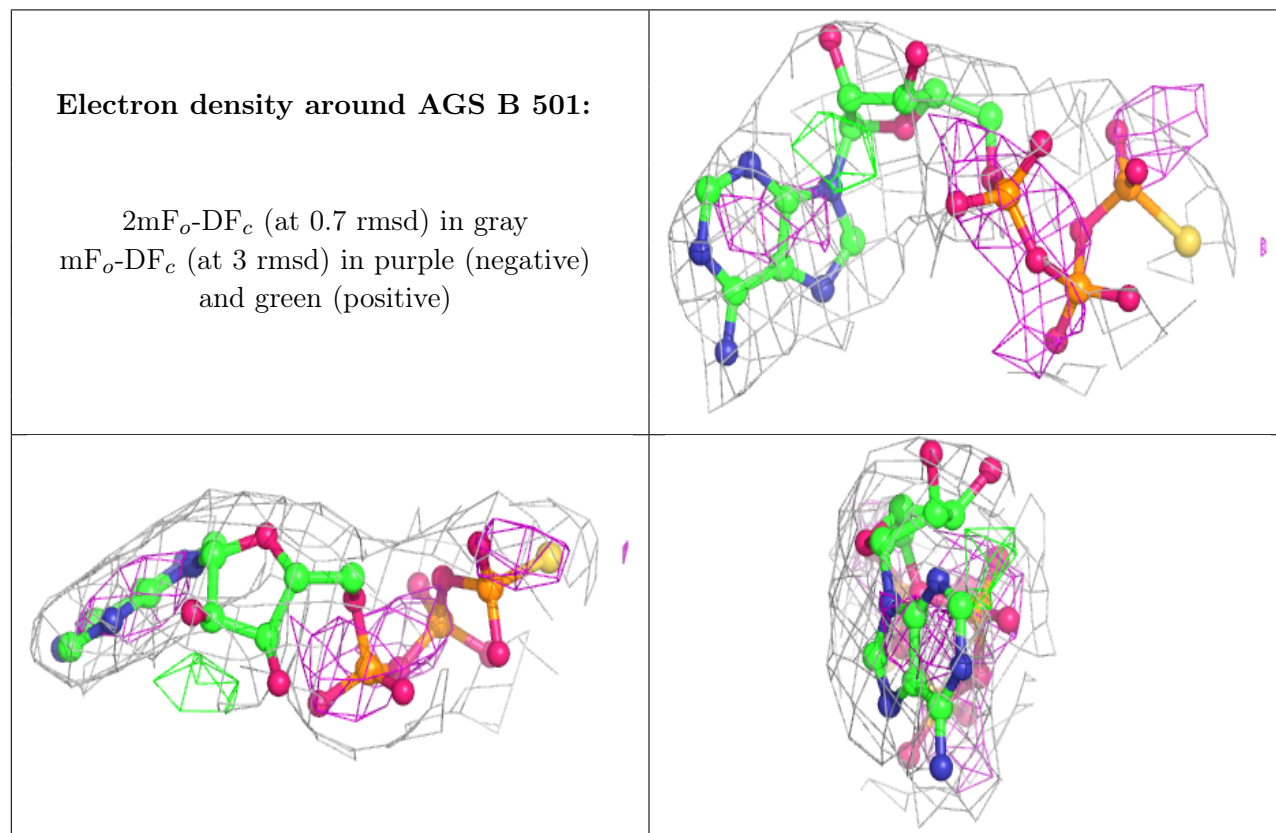
## 6.4 Ligands [i](#)

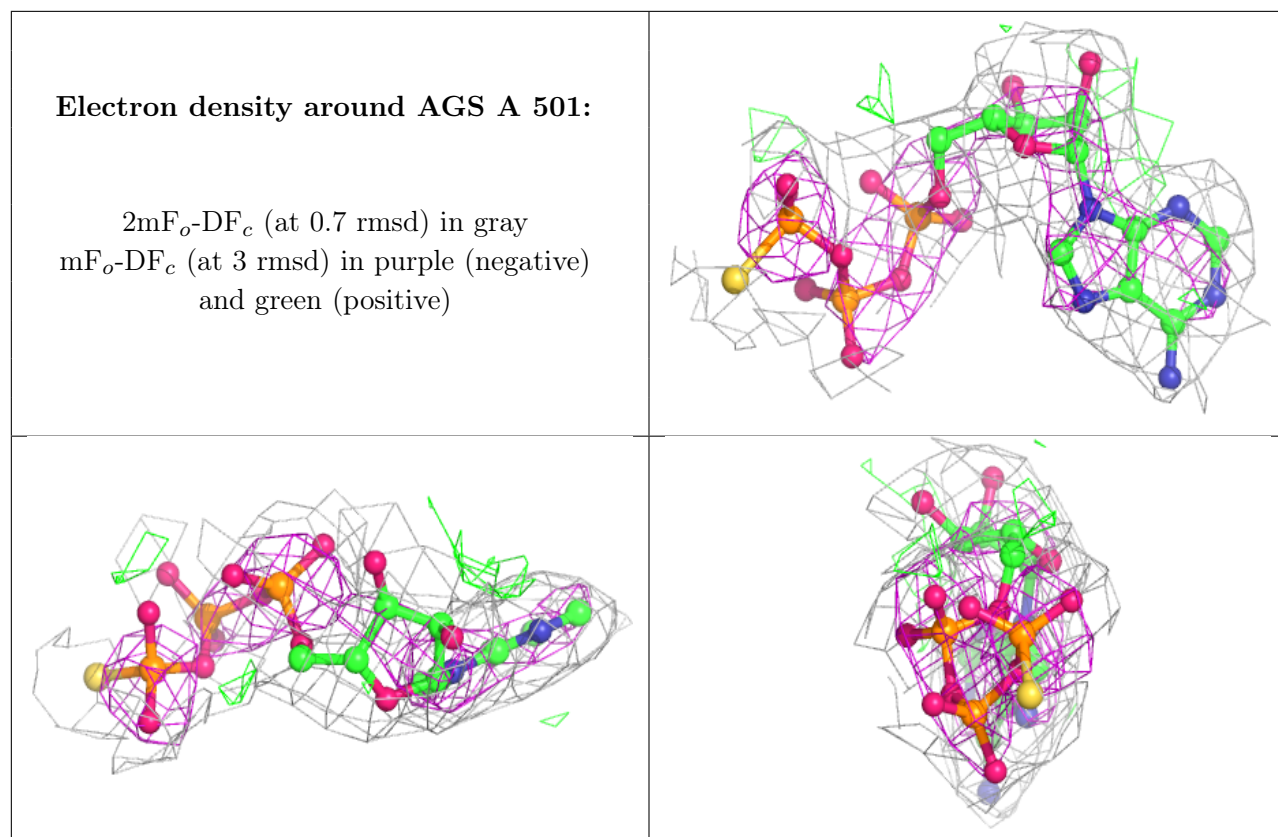
In the following table, the Atoms column lists the number of modelled atoms in the group and the number defined in the chemical component dictionary. The B-factors column lists the minimum, median, 95<sup>th</sup> percentile and maximum values of B factors of atoms in the group. The column labelled 'Q< 0.9' lists the number of atoms with occupancy less than 0.9.

Mol	Type	Chain	Res	Atoms	RSCC	RSR	B-factors(Å <sup>2</sup> )	Q<0.9
3	MG	C	502	1/1	0.84	0.12	100,100,100,100	0
2	AGS	B	501	31/31	0.91	0.16	103,107,113,114	0
3	MG	A	502	1/1	0.94	0.18	51,51,51,51	0
2	AGS	A	501	31/31	0.94	0.16	64,67,81,82	0
4	EDO	C	501	4/4	0.95	0.08	54,56,58,61	0
3	MG	B	502	1/1	0.96	0.14	59,59,59,59	0



The following is a graphical depiction of the model fit to experimental electron density of all instances of the Ligand of Interest. In addition, ligands with molecular weight > 250 and outliers as shown on the geometry validation Tables will also be included. Each fit is shown from different orientation to approximate a three-dimensional view.





## 6.5 Other polymers [i](#)

There are no such residues in this entry.