



Full wwPDB X-ray Structure Validation Report ⓘ

Oct 24, 2023 – 07:40 PM EDT

PDB ID : 2Z81
Title : Crystal structure of the TLR1-TLR2 heterodimer induced by binding of a tri-acylated lipopeptide
Authors : Lee, J.O.; Jin, M.S.; Kim, S.E.; Heo, J.Y.
Deposited on : 2007-08-30
Resolution : 1.80 Å(reported)

This is a Full wwPDB X-ray Structure Validation Report for a publicly released PDB entry.

We welcome your comments at validation@mail.wwpdb.org

A user guide is available at

<https://www.wwpdb.org/validation/2017/XrayValidationReportHelp>

with specific help available everywhere you see the ⓘ symbol.

The types of validation reports are described at

<http://www.wwpdb.org/validation/2017/FAQs#types>.

The following versions of software and data (see [references ⓘ](#)) were used in the production of this report:

MolProbity : 4.02b-467
Mogul : 1.8.5 (274361), CSD as541be (2020)
Xtriage (Phenix) : 1.13
EDS : 2.36
buster-report : 1.1.7 (2018)
Percentile statistics : 20191225.v01 (using entries in the PDB archive December 25th 2019)
Refmac : 5.8.0158
CCP4 : 7.0.044 (Gargrove)
Ideal geometry (proteins) : Engh & Huber (2001)
Ideal geometry (DNA, RNA) : Parkinson et al. (1996)
Validation Pipeline (wwPDB-VP) : 2.36

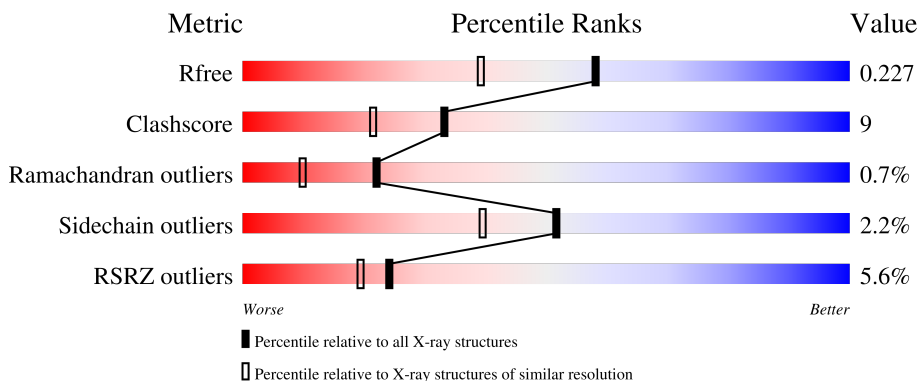
1 Overall quality at a glance

The following experimental techniques were used to determine the structure:

X-RAY DIFFRACTION

The reported resolution of this entry is 1.80 Å.

Percentile scores (ranging between 0-100) for global validation metrics of the entry are shown in the following graphic. The table shows the number of entries on which the scores are based.



Metric	Whole archive (#Entries)	Similar resolution (#Entries, resolution range(Å))
R_{free}	130704	5950 (1.80-1.80)
Clashscore	141614	6793 (1.80-1.80)
Ramachandran outliers	138981	6697 (1.80-1.80)
Sidechain outliers	138945	6696 (1.80-1.80)
RSRZ outliers	127900	5850 (1.80-1.80)

The table below summarises the geometric issues observed across the polymeric chains and their fit to the electron density. The red, orange, yellow and green segments of the lower bar indicate the fraction of residues that contain outliers for ≥ 3 , 2, 1 and 0 types of geometric quality criteria respectively. A grey segment represents the fraction of residues that are not modelled. The numeric value for each fraction is indicated below the corresponding segment, with a dot representing fractions $\leq 5\%$. The upper red bar (where present) indicates the fraction of residues that have poor fit to the electron density. The numeric value is given above the bar.

Mol	Chain	Length	Quality of chain
1	A	549	
2	B	3	
3	C	3	

The following table lists non-polymeric compounds, carbohydrate monomers and non-standard residues in protein, DNA, RNA chains that are outliers for geometric or electron-density-fit criteria:

Mol	Type	Chain	Res	Chirality	Geometry	Clashes	Electron density
5	PCJ	A	1	X	-	-	-

2 Entry composition [i](#)

There are 6 unique types of molecules in this entry. The entry contains 4802 atoms, of which 0 are hydrogens and 0 are deuteriums.

In the tables below, the ZeroOcc column contains the number of atoms modelled with zero occupancy, the AltConf column contains the number of residues with at least one atom in alternate conformation and the Trace column contains the number of residues modelled with at most 2 atoms.

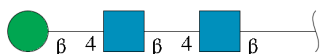
- Molecule 1 is a protein called Toll-like receptor 2, Variable lymphocyte receptor B.

Mol	Chain	Residues	Atoms					ZeroOcc	AltConf	Trace
			Total	C	N	O	S			
1	A	549	4353	2769	738	826	20	0	0	0

There are 2 discrepancies between the modelled and reference sequences:

Chain	Residue	Modelled	Actual	Comment	Reference
A	507	SER	-	linker	UNP Q9QUN7
A	508	ARG	-	linker	UNP Q9QUN7

- Molecule 2 is an oligosaccharide called beta-D-mannopyranose-(1-4)-2-acetamido-2-deoxy-beta-D-glucopyranose-(1-4)-2-acetamido-2-deoxy-beta-D-glucopyranose.



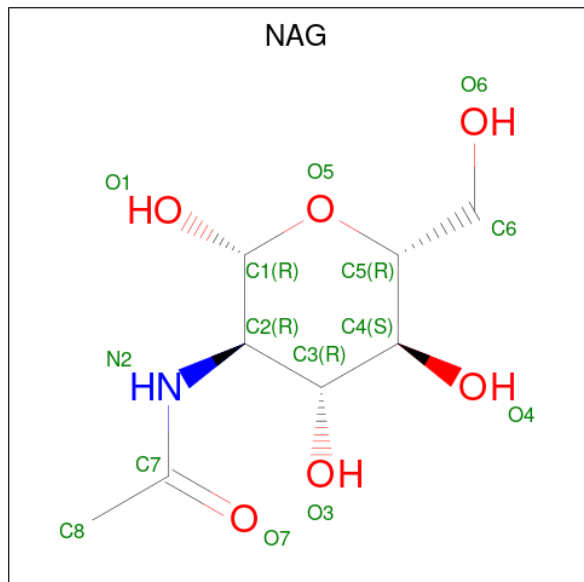
Mol	Chain	Residues	Atoms				ZeroOcc	AltConf	Trace
			Total	C	N	O			
2	B	3	39	22	2	15	0	0	0

- Molecule 3 is an oligosaccharide called alpha-D-mannopyranose-(1-4)-2-acetamido-2-deoxy-beta-D-glucopyranose-(1-4)-2-acetamido-2-deoxy-beta-D-glucopyranose.



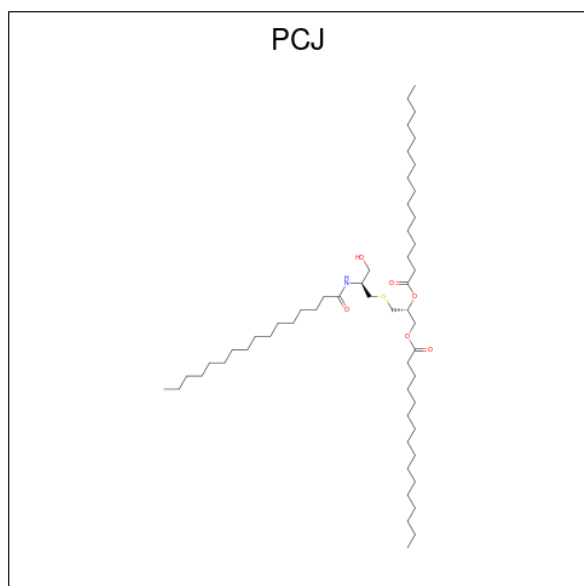
Mol	Chain	Residues	Atoms				ZeroOcc	AltConf	Trace
			Total	C	N	O			
3	C	3	39	22	2	15	0	0	0

- Molecule 4 is 2-acetamido-2-deoxy-beta-D-glucopyranose (three-letter code: NAG) (formula: $C_8H_{15}NO_6$).



Mol	Chain	Residues	Atoms				ZeroOcc	AltConf
			Total	C	N	O		
4	A	1	14	8	1	5	0	0

- Molecule 5 is (2R)-3-[[[(2S)-3-HYDROXY-2-(PALMITOYLAMINO)PROPYL]THIO}PROPANE-1,2-DIYL DIHEXADECANOATE (three-letter code: PCJ) (formula: $C_{54}H_{105}NO_6S$).



Mol	Chain	Residues	Atoms					ZeroOcc	AltConf
			Total	C	N	O	S		
5	A	1	45	38	1	5	1	0	0

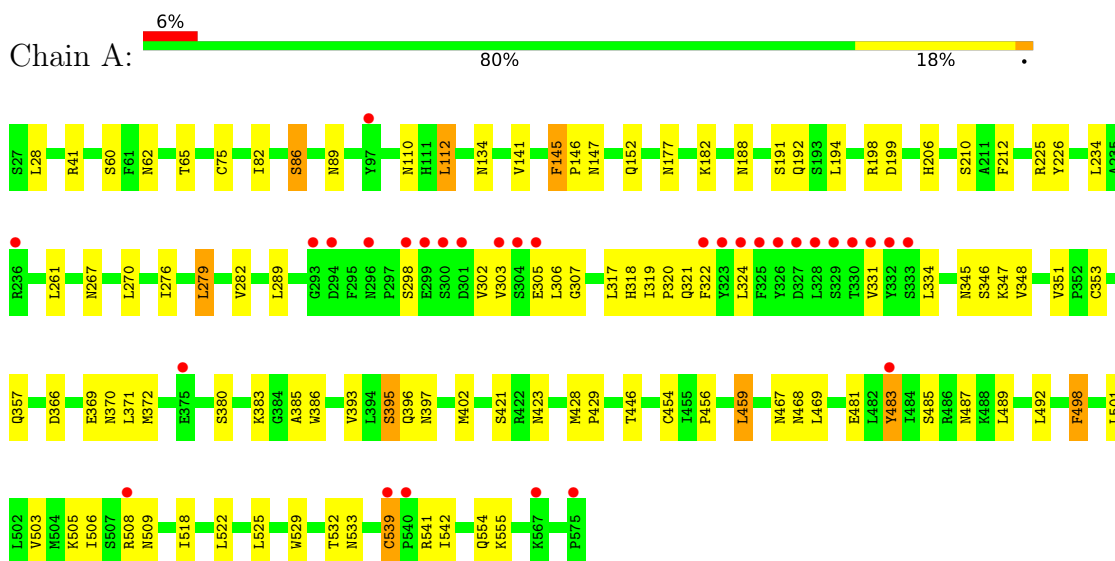
- Molecule 6 is water.

Mol	Chain	Residues	Atoms		ZeroOcc	AltConf
6	A	312	Total 312	O 312	0	0

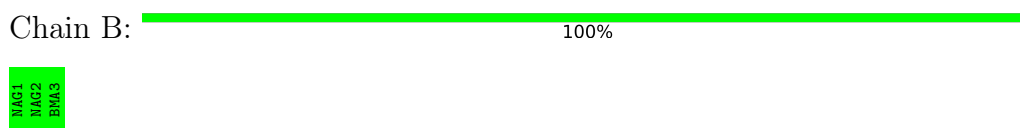
3 Residue-property plots

These plots are drawn for all protein, RNA, DNA and oligosaccharide chains in the entry. The first graphic for a chain summarises the proportions of the various outlier classes displayed in the second graphic. The second graphic shows the sequence view annotated by issues in geometry and electron density. Residues are color-coded according to the number of geometric quality criteria for which they contain at least one outlier: green = 0, yellow = 1, orange = 2 and red = 3 or more. A red dot above a residue indicates a poor fit to the electron density ($RSRZ > 2$). Stretches of 2 or more consecutive residues without any outlier are shown as a green connector. Residues present in the sample, but not in the model, are shown in grey.

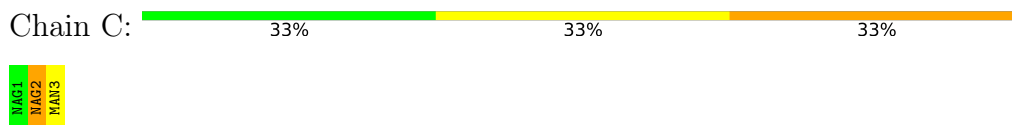
- Molecule 1: Toll-like receptor 2, Variable lymphocyte receptor B



- Molecule 2: beta-D-mannopyranose-(1-4)-2-acetamido-2-deoxy-beta-D-glucopyranose-(1-4)-2-acetamido-2-deoxy-beta-D-glucopyranose



- Molecule 3: alpha-D-mannopyranose-(1-4)-2-acetamido-2-deoxy-beta-D-glucopyranose-(1-4)-2-acetamido-2-deoxy-beta-D-glucopyranose



4 Data and refinement statistics i

Property	Value	Source
Space group	P 21 21 21	Depositor
Cell constants a, b, c, α , β , γ	83.30Å 81.55Å 98.96Å 90.00° 90.00° 90.00°	Depositor
Resolution (Å)	37.72 – 1.80 37.72 – 1.81	Depositor EDS
% Data completeness (in resolution range)	96.7 (37.72-1.80) 96.8 (37.72-1.81)	Depositor EDS
R_{merge}	0.06	Depositor
R_{sym}	(Not available)	Depositor
$\langle I/\sigma(I) \rangle$ ¹	2.46 (at 1.81Å)	Xtrriage
Refinement program	CNS 1.2	Depositor
R, R_{free}	0.213 , 0.232 0.207 , 0.227	Depositor DCC
R_{free} test set	3056 reflections (5.05%)	wwPDB-VP
Wilson B-factor (Å ²)	19.8	Xtrriage
Anisotropy	0.288	Xtrriage
Bulk solvent k_{sol} (e/Å ³), B_{sol} (Å ²)	0.34 , 44.6	EDS
L-test for twinning ²	$\langle L \rangle = 0.48$, $\langle L^2 \rangle = 0.31$	Xtrriage
Estimated twinning fraction	0.016 for k,h,-l	Xtrriage
F_o, F_c correlation	0.94	EDS
Total number of atoms	4802	wwPDB-VP
Average B, all atoms (Å ²)	26.0	wwPDB-VP

Xtrriage's analysis on translational NCS is as follows: *The largest off-origin peak in the Patterson function is 3.95% of the height of the origin peak. No significant pseudotranslation is detected.*

¹Intensities estimated from amplitudes.

²Theoretical values of $\langle |L| \rangle$, $\langle L^2 \rangle$ for acentric reflections are 0.5, 0.333 respectively for untwinned datasets, and 0.375, 0.2 for perfectly twinned datasets.

5 Model quality [i](#)

5.1 Standard geometry [i](#)

Bond lengths and bond angles in the following residue types are not validated in this section: PCJ, NAG, MAN, BMA

The Z score for a bond length (or angle) is the number of standard deviations the observed value is removed from the expected value. A bond length (or angle) with $|Z| > 5$ is considered an outlier worth inspection. RMSZ is the root-mean-square of all Z scores of the bond lengths (or angles).

Mol	Chain	Bond lengths		Bond angles	
		RMSZ	# Z >5	RMSZ	# Z >5
1	A	0.33	0/4437	0.65	1/6008 (0.0%)

There are no bond length outliers.

All (1) bond angle outliers are listed below:

Mol	Chain	Res	Type	Atoms	Z	Observed(°)	Ideal(°)
1	A	86	SER	N-CA-C	-6.22	94.20	111.00

There are no chirality outliers.

There are no planarity outliers.

5.2 Too-close contacts [i](#)

In the following table, the Non-H and H(model) columns list the number of non-hydrogen atoms and hydrogen atoms in the chain respectively. The H(added) column lists the number of hydrogen atoms added and optimized by MolProbity. The Clashes column lists the number of clashes within the asymmetric unit, whereas Symm-Clashes lists symmetry-related clashes.

Mol	Chain	Non-H	H(model)	H(added)	Clashes	Symm-Clashes
1	A	4353	0	4401	76	0
2	B	39	0	34	0	0
3	C	39	0	34	1	0
4	A	14	0	13	1	0
5	A	45	0	72	5	0
6	A	312	0	0	3	0
All	All	4802	0	4554	78	0

The all-atom clashscore is defined as the number of clashes found per 1000 atoms (including hydrogen atoms). The all-atom clashscore for this structure is 9.

All (78) close contacts within the same asymmetric unit are listed below, sorted by their clash magnitude.

Atom-1	Atom-2	Interatomic distance (Å)	Clash overlap (Å)
1:A:446:THR:H	1:A:467:ASN:HD21	1.18	0.90
1:A:282:VAL:HG21	5:A:1:PCJ:H112	1.55	0.88
1:A:372:MET:H	1:A:397:ASN:HD22	1.27	0.78
1:A:489:LEU:H	1:A:509:ASN:HD22	1.34	0.76
1:A:110:ASN:HB2	1:A:134:ASN:HD21	1.53	0.74
1:A:65:THR:HG23	1:A:89:ASN:ND2	2.03	0.74
1:A:469:LEU:H	1:A:487:ASN:HD22	1.35	0.72
1:A:65:THR:HG23	1:A:89:ASN:HD21	1.57	0.69
1:A:492:LEU:HD23	1:A:518:ILE:HD13	1.74	0.69
1:A:112:LEU:H	1:A:134:ASN:HD22	1.39	0.68
1:A:267:ASN:HD21	1:A:303:VAL:H	1.41	0.68
1:A:306:LEU:HD11	5:A:1:PCJ:H121	1.77	0.66
1:A:331:VAL:HA	1:A:334:LEU:HD12	1.79	0.64
1:A:346:SER:H	1:A:370:ASN:HD21	1.46	0.62
1:A:60:SER:OG	1:A:82:ILE:HG22	2.00	0.60
1:A:370:ASN:HB2	1:A:397:ASN:HD21	1.66	0.60
1:A:446:THR:H	1:A:467:ASN:ND2	1.96	0.59
1:A:469:LEU:H	1:A:487:ASN:ND2	2.01	0.59
1:A:492:LEU:HD12	1:A:506:ILE:HD13	1.85	0.58
1:A:508:ARG:HG2	1:A:532:THR:HG21	1.85	0.57
1:A:487:ASN:HB2	1:A:509:ASN:HD21	1.70	0.57
1:A:467:ASN:HB2	1:A:487:ASN:HD21	1.69	0.56
1:A:305:GLU:HB2	6:A:954:HOH:O	2.06	0.55
1:A:289:LEU:HB3	1:A:319:ILE:CD1	2.37	0.54
1:A:395:SER:O	1:A:421:SER:O	2.26	0.53
1:A:86:SER:O	1:A:110:ASN:ND2	2.41	0.53
1:A:319:ILE:HG21	1:A:322:PHE:HD1	1.73	0.52
1:A:481:GLU:HG3	1:A:503:VAL:HB	1.91	0.52
1:A:318:HIS:HD2	6:A:879:HOH:O	1.91	0.52
1:A:539:CYS:C	1:A:541:ARG:H	2.12	0.52
1:A:191:SER:O	1:A:192:GLN:HB2	2.10	0.52
1:A:542:ILE:HG13	1:A:542:ILE:O	2.10	0.51
1:A:182:LYS:HA	1:A:206:HIS:HB2	1.92	0.51
1:A:346:SER:H	1:A:370:ASN:ND2	2.08	0.51
1:A:305:GLU:HG2	1:A:307:GLY:H	1.76	0.51
1:A:298:SER:O	1:A:302:VAL:HG23	2.11	0.51
5:A:1:PCJ:H351	5:A:1:PCJ:H171	1.93	0.50
1:A:508:ARG:HG2	1:A:532:THR:CG2	2.42	0.50
1:A:483:TYR:HE2	1:A:485:SER:HB2	1.76	0.49
1:A:369:GLU:HA	1:A:396:GLN:O	2.12	0.49

Continued on next page...

Continued from previous page...

Atom-1	Atom-2	Interatomic distance (Å)	Clash overlap (Å)
1:A:345:ASN:HA	1:A:369:GLU:O	2.12	0.49
1:A:554:GLN:HG3	1:A:555:LYS:N	2.28	0.48
1:A:347:LYS:HA	1:A:371:LEU:HD13	1.95	0.48
1:A:351:VAL:O	1:A:380:SER:HA	2.14	0.48
1:A:509:ASN:HB2	1:A:533:ASN:HD21	1.78	0.48
1:A:198:ARG:HG2	1:A:199:ASP:OD1	2.14	0.48
1:A:506:ILE:HG12	1:A:506:ILE:O	2.15	0.47
3:C:2:NAG:O3	3:C:3:MAN:H2	2.15	0.47
1:A:385:ALA:O	1:A:386:TRP:C	2.54	0.46
1:A:141:VAL:HG12	1:A:141:VAL:O	2.15	0.46
1:A:152:GLN:HB3	1:A:177:ASN:HD22	1.80	0.46
1:A:210:SER:HB3	1:A:234:LEU:HD23	1.97	0.45
1:A:370:ASN:C	1:A:371:LEU:HD12	2.37	0.45
1:A:532:THR:HG22	1:A:532:THR:O	2.16	0.45
1:A:41:ARG:H	1:A:62:ASN:HD21	1.65	0.44
1:A:112:LEU:H	1:A:134:ASN:ND2	2.13	0.44
1:A:65:THR:HG21	6:A:895:HOH:O	2.16	0.43
1:A:225:ARG:HH11	1:A:225:ARG:HG3	1.84	0.43
1:A:456:PRO:HG2	1:A:459:LEU:HD13	2.00	0.43
1:A:402:MET:CE	1:A:428:MET:HB3	2.49	0.43
1:A:188:ASN:HA	1:A:212:PHE:CZ	2.54	0.42
1:A:276:ILE:HD12	1:A:279:LEU:HG	2.01	0.42
1:A:429:PRO:O	1:A:454:CYS:HB2	2.18	0.42
1:A:498:PHE:HB2	1:A:501:LEU:HB2	2.02	0.42
1:A:395:SER:O	1:A:423:ASN:OD1	2.37	0.42
1:A:348:VAL:H	1:A:370:ASN:ND2	2.18	0.42
1:A:41:ARG:HB2	1:A:62:ASN:HD21	1.85	0.41
1:A:351:VAL:HG22	5:A:1:PCJ:H241	2.01	0.41
1:A:321:GLN:HB2	1:A:324:LEU:HD12	2.02	0.41
1:A:317:LEU:HD21	1:A:319:ILE:HD11	2.03	0.41
1:A:147:ASN:OD1	4:A:821:NAG:N2	2.51	0.41
1:A:505:LYS:HA	1:A:529:TRP:HB2	2.02	0.41
1:A:522:LEU:HB3	1:A:525:LEU:HB2	2.03	0.40
1:A:353:CYS:O	1:A:357:GLN:HG3	2.21	0.40
1:A:366:ASP:HA	1:A:393:VAL:HB	2.04	0.40
1:A:270:LEU:CD2	5:A:1:PCJ:H122	2.52	0.40
1:A:28:LEU:HD12	1:A:28:LEU:O	2.21	0.40
1:A:145:PHE:N	1:A:146:PRO:CD	2.85	0.40

There are no symmetry-related clashes.

5.3 Torsion angles [i](#)

5.3.1 Protein backbone [i](#)

In the following table, the Percentiles column shows the percent Ramachandran outliers of the chain as a percentile score with respect to all X-ray entries followed by that with respect to entries of similar resolution.

The Analysed column shows the number of residues for which the backbone conformation was analysed, and the total number of residues.

Mol	Chain	Analysed	Favoured	Allowed	Outliers	Percentiles
1	A	547/549 (100%)	513 (94%)	30 (6%)	4 (1%)	22 10

All (4) Ramachandran outliers are listed below:

Mol	Chain	Res	Type
1	A	395	SER
1	A	383	LYS
1	A	145	PHE
1	A	320	PRO

5.3.2 Protein sidechains [i](#)

In the following table, the Percentiles column shows the percent sidechain outliers of the chain as a percentile score with respect to all X-ray entries followed by that with respect to entries of similar resolution.

The Analysed column shows the number of residues for which the sidechain conformation was analysed, and the total number of residues.

Mol	Chain	Analysed	Rotameric	Outliers	Percentiles
1	A	510/510 (100%)	499 (98%)	11 (2%)	52 39

All (11) residues with a non-rotameric sidechain are listed below:

Mol	Chain	Res	Type
1	A	75	CYS
1	A	112	LEU
1	A	194	LEU
1	A	226	TYR
1	A	261	LEU
1	A	279	LEU
1	A	459	LEU

Continued on next page...

Continued from previous page...

Mol	Chain	Res	Type
1	A	468	ASN
1	A	483	TYR
1	A	498	PHE
1	A	539	CYS

Sometimes sidechains can be flipped to improve hydrogen bonding and reduce clashes. All (20) such sidechains are listed below:

Mol	Chain	Res	Type
1	A	62	ASN
1	A	110	ASN
1	A	134	ASN
1	A	177	ASN
1	A	190	GLN
1	A	201	HIS
1	A	267	ASN
1	A	318	HIS
1	A	321	GLN
1	A	370	ASN
1	A	397	ASN
1	A	398	HIS
1	A	423	ASN
1	A	433	GLN
1	A	467	ASN
1	A	468	ASN
1	A	487	ASN
1	A	509	ASN
1	A	533	ASN
1	A	550	ASN

5.3.3 RNA [i](#)

There are no RNA molecules in this entry.

5.4 Non-standard residues in protein, DNA, RNA chains [i](#)

There are no non-standard protein/DNA/RNA residues in this entry.

5.5 Carbohydrates [i](#)

6 monosaccharides are modelled in this entry.

In the following table, the Counts columns list the number of bonds (or angles) for which Mogul statistics could be retrieved, the number of bonds (or angles) that are observed in the model and the number of bonds (or angles) that are defined in the Chemical Component Dictionary. The Link column lists molecule types, if any, to which the group is linked. The Z score for a bond length (or angle) is the number of standard deviations the observed value is removed from the expected value. A bond length (or angle) with $|Z| > 2$ is considered an outlier worth inspection. RMSZ is the root-mean-square of all Z scores of the bond lengths (or angles).

Mol	Type	Chain	Res	Link	Bond lengths			Bond angles		
					Counts	RMSZ	# Z > 2	Counts	RMSZ	# Z > 2
2	NAG	B	1	2,1	14,14,15	0.63	0	17,19,21	0.72	0
2	NAG	B	2	2	14,14,15	0.68	0	17,19,21	0.80	0
2	BMA	B	3	2	11,11,12	0.57	0	15,15,17	0.43	0
3	NAG	C	1	1,3	14,14,15	0.71	0	17,19,21	0.77	0
3	NAG	C	2	3	14,14,15	0.69	0	17,19,21	0.74	1 (5%)
3	MAN	C	3	3	11,11,12	0.64	0	15,15,17	0.62	0

In the following table, the Chirals column lists the number of chiral outliers, the number of chiral centers analysed, the number of these observed in the model and the number defined in the Chemical Component Dictionary. Similar counts are reported in the Torsion and Rings columns. '-' means no outliers of that kind were identified.

Mol	Type	Chain	Res	Link	Chirals	Torsions	Rings
2	NAG	B	1	2,1	-	4/6/23/26	0/1/1/1
2	NAG	B	2	2	-	4/6/23/26	0/1/1/1
2	BMA	B	3	2	-	2/2/19/22	0/1/1/1
3	NAG	C	1	1,3	-	0/6/23/26	0/1/1/1
3	NAG	C	2	3	-	4/6/23/26	0/1/1/1
3	MAN	C	3	3	-	0/2/19/22	0/1/1/1

There are no bond length outliers.

All (1) bond angle outliers are listed below:

Mol	Chain	Res	Type	Atoms	Z	Observed(°)	Ideal(°)
3	C	2	NAG	C2-N2-C7	-2.15	119.84	122.90

There are no chirality outliers.

All (14) torsion outliers are listed below:

Mol	Chain	Res	Type	Atoms
2	B	2	NAG	C8-C7-N2-C2
2	B	2	NAG	O7-C7-N2-C2

Continued on next page...

Continued from previous page...

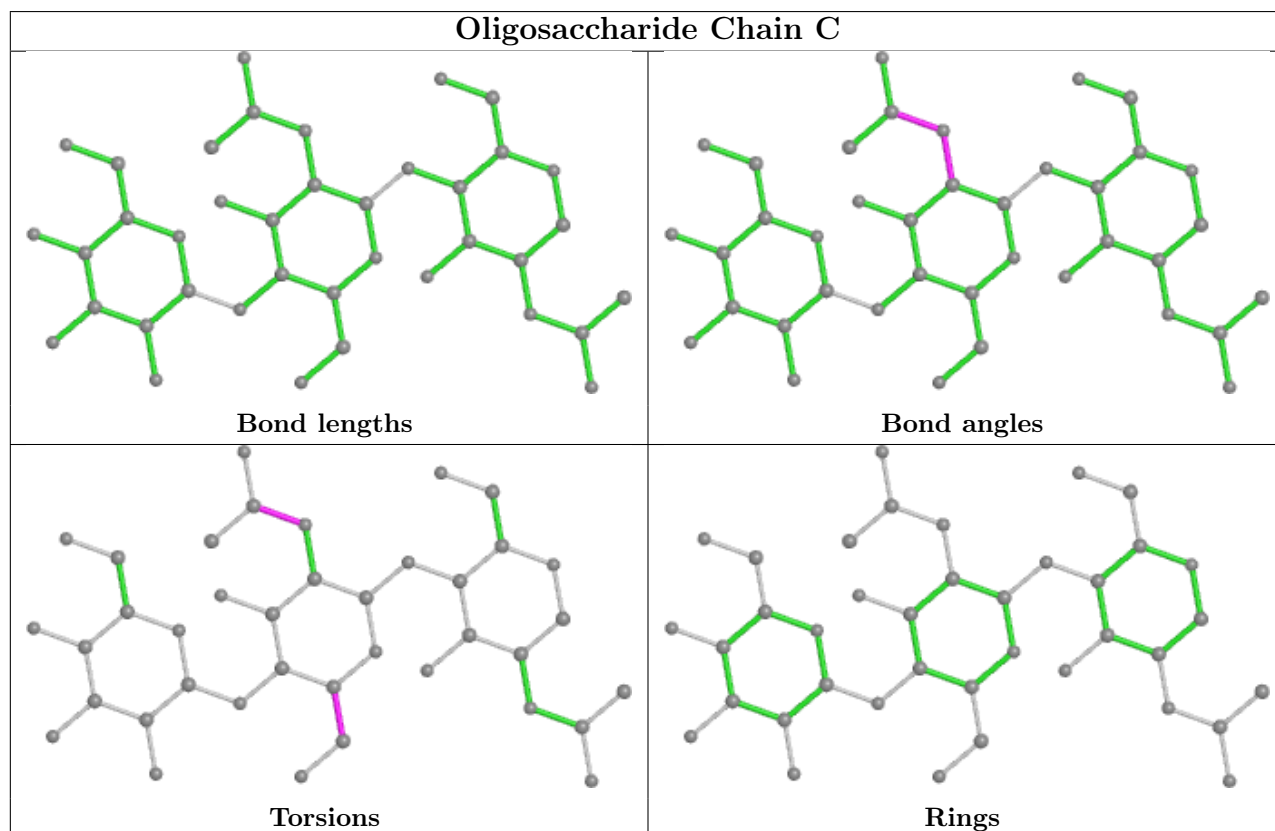
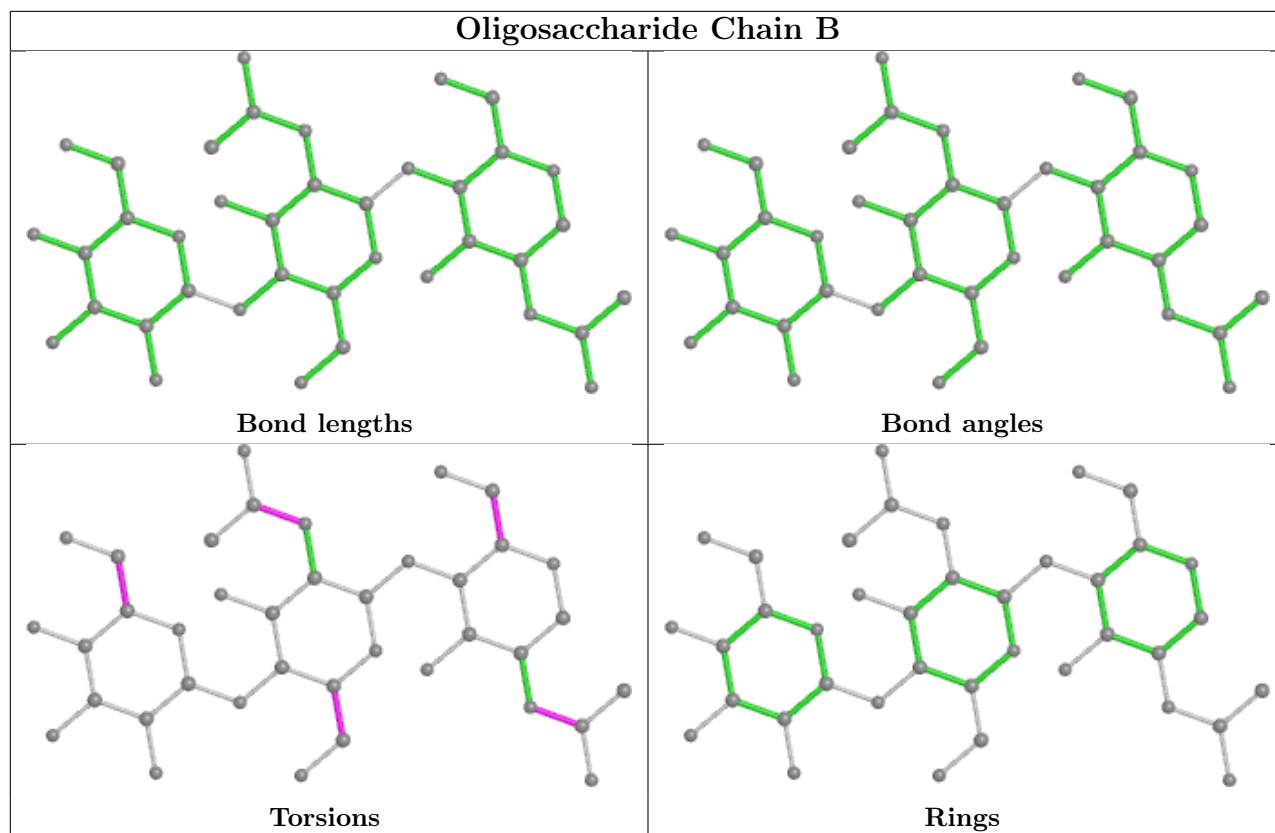
Mol	Chain	Res	Type	Atoms
3	C	2	NAG	C8-C7-N2-C2
3	C	2	NAG	O7-C7-N2-C2
2	B	3	BMA	O5-C5-C6-O6
2	B	1	NAG	O5-C5-C6-O6
2	B	3	BMA	C4-C5-C6-O6
2	B	1	NAG	C8-C7-N2-C2
2	B	1	NAG	C4-C5-C6-O6
2	B	1	NAG	O7-C7-N2-C2
3	C	2	NAG	C4-C5-C6-O6
2	B	2	NAG	C4-C5-C6-O6
2	B	2	NAG	O5-C5-C6-O6
3	C	2	NAG	O5-C5-C6-O6

There are no ring outliers.

2 monomers are involved in 1 short contact:

Mol	Chain	Res	Type	Clashes	Symm-Clashes
3	C	2	NAG	1	0
3	C	3	MAN	1	0

The following is a two-dimensional graphical depiction of Mogul quality analysis of bond lengths, bond angles, torsion angles, and ring geometry for oligosaccharide.



5.6 Ligand geometry [i](#)

2 ligands are modelled in this entry.

In the following table, the Counts columns list the number of bonds (or angles) for which Mogul statistics could be retrieved, the number of bonds (or angles) that are observed in the model and the number of bonds (or angles) that are defined in the Chemical Component Dictionary. The Link column lists molecule types, if any, to which the group is linked. The Z score for a bond length (or angle) is the number of standard deviations the observed value is removed from the expected value. A bond length (or angle) with $|Z| > 2$ is considered an outlier worth inspection. RMSZ is the root-mean-square of all Z scores of the bond lengths (or angles).

Mol	Type	Chain	Res	Link	Bond lengths			Bond angles		
					Counts	RMSZ	# Z > 2	Counts	RMSZ	# Z > 2
4	NAG	A	821	1	14,14,15	0.66	0	17,19,21	0.60	0
5	PCJ	A	1	-	44,44,61	0.82	1 (2%)	40,47,65	1.10	4 (10%)

In the following table, the Chirals column lists the number of chiral outliers, the number of chiral centers analysed, the number of these observed in the model and the number defined in the Chemical Component Dictionary. Similar counts are reported in the Torsion and Rings columns. '-' means no outliers of that kind were identified.

Mol	Type	Chain	Res	Link	Chirals	Torsions	Rings
4	NAG	A	821	1	-	4/6/23/26	0/1/1/1
5	PCJ	A	1	-	1/1/4/6	19/47/47/66	-

All (1) bond length outliers are listed below:

Mol	Chain	Res	Type	Atoms	Z	Observed(Å)	Ideal(Å)
5	A	1	PCJ	O-C	-4.46	1.23	1.42

All (4) bond angle outliers are listed below:

Mol	Chain	Res	Type	Atoms	Z	Observed(°)	Ideal(°)
5	A	1	PCJ	O2-C46-C45	3.74	119.56	111.50
5	A	1	PCJ	C2-O2-C46	-2.73	111.08	117.79
5	A	1	PCJ	O3-C26-C25	2.46	119.63	111.91
5	A	1	PCJ	O-C-CA	2.40	121.00	111.52

All (1) chirality outliers are listed below:

Mol	Chain	Res	Type	Atom
5	A	1	PCJ	CA

All (23) torsion outliers are listed below:

Mol	Chain	Res	Type	Atoms
4	A	821	NAG	C3-C2-N2-C7
4	A	821	NAG	C8-C7-N2-C2
4	A	821	NAG	O7-C7-N2-C2
5	A	1	PCJ	C-CA-CB-SG
5	A	1	PCJ	N-CA-CB-SG
5	A	1	PCJ	SG-C1-C2-O2
5	A	1	PCJ	SG-C1-C2-C3
5	A	1	PCJ	O2-C2-C3-O3
5	A	1	PCJ	O47-C46-O2-C2
5	A	1	PCJ	C45-C46-O2-C2
5	A	1	PCJ	C16-C17-C18-C19
5	A	1	PCJ	C42-C43-C44-C45
5	A	1	PCJ	C22-C23-C24-C25
5	A	1	PCJ	C38-C39-C40-C41
4	A	821	NAG	O5-C5-C6-O6
5	A	1	PCJ	C18-C19-C20-C21
5	A	1	PCJ	C1-C2-C3-O3
5	A	1	PCJ	O28-C26-O3-C3
5	A	1	PCJ	C25-C26-O3-C3
5	A	1	PCJ	CA-CB-SG-C1
5	A	1	PCJ	O-C-CA-N
5	A	1	PCJ	C43-C44-C45-C46
5	A	1	PCJ	C44-C45-C46-O2

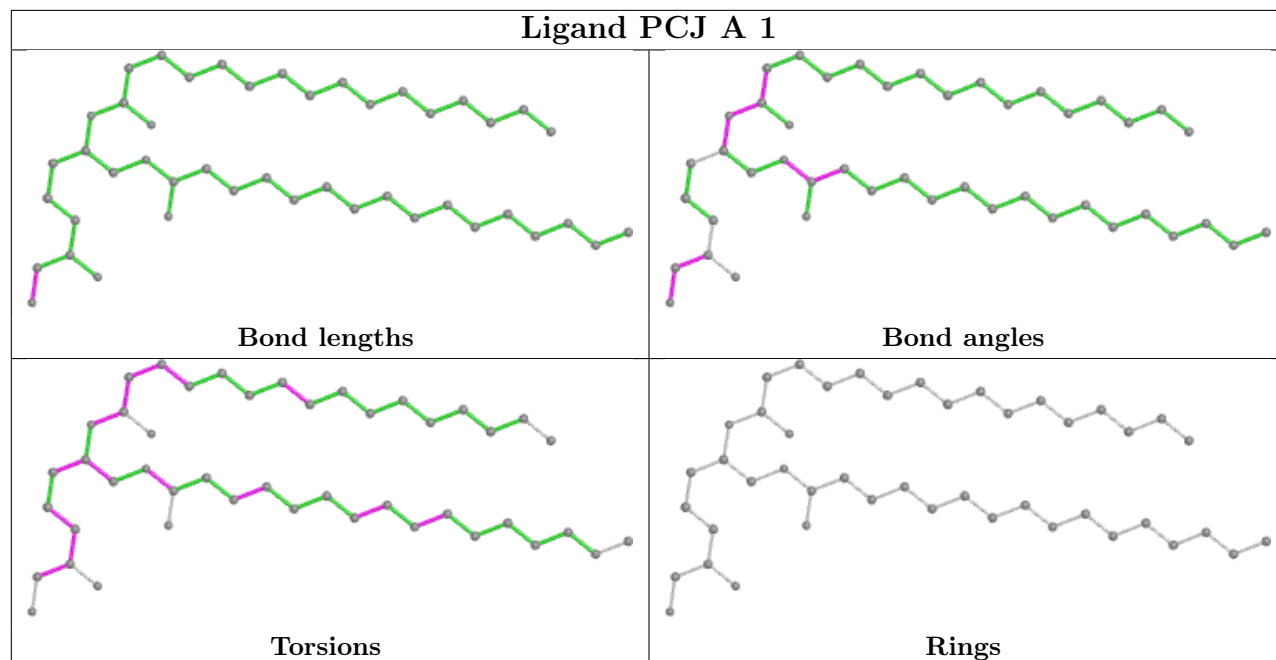
There are no ring outliers.

2 monomers are involved in 6 short contacts:

Mol	Chain	Res	Type	Clashes	Symm-Clashes
4	A	821	NAG	1	0
5	A	1	PCJ	5	0

The following is a two-dimensional graphical depiction of Mogul quality analysis of bond lengths, bond angles, torsion angles, and ring geometry for all instances of the Ligand of Interest. In addition, ligands with molecular weight > 250 and outliers as shown on the validation Tables will also be included. For torsion angles, if less than 5% of the Mogul distribution of torsion angles is within 10 degrees of the torsion angle in question, then that torsion angle is considered an outlier. Any bond that is central to one or more torsion angles identified as an outlier by Mogul will be highlighted in the graph. For rings, the root-mean-square deviation (RMSD) between the ring in question and similar rings identified by Mogul is calculated over all ring torsion angles. If the average RMSD is greater than 60 degrees and the minimal RMSD between the ring in question and any Mogul-identified rings is also greater than 60 degrees, then that ring is considered an outlier. The outliers are highlighted in purple. The color gray indicates Mogul did not find sufficient

equivalents in the CSD to analyse the geometry.



5.7 Other polymers [i](#)

There are no such residues in this entry.

5.8 Polymer linkage issues [i](#)

There are no chain breaks in this entry.

6 Fit of model and data

6.1 Protein, DNA and RNA chains

In the following table, the column labelled ‘#RSRZ> 2’ contains the number (and percentage) of RSRZ outliers, followed by percent RSRZ outliers for the chain as percentile scores relative to all X-ray entries and entries of similar resolution. The OWAB column contains the minimum, median, 95th percentile and maximum values of the occupancy-weighted average B-factor per residue. The column labelled ‘Q< 0.9’ lists the number of (and percentage) of residues with an average occupancy less than 0.9.

Mol	Chain	Analysed	<RSRZ>	#RSRZ>2	OWAB(Å ²)	Q<0.9
1	A	549/549 (100%)	0.18	31 (5%) 24 19	11, 23, 49, 87	0

All (31) RSRZ outliers are listed below:

Mol	Chain	Res	Type	RSRZ
1	A	326	TYR	9.2
1	A	331	VAL	8.0
1	A	325	PHE	7.8
1	A	328	LEU	7.5
1	A	323	TYR	7.0
1	A	322	PHE	6.8
1	A	299	GLU	6.4
1	A	539	CYS	6.1
1	A	540	PRO	5.6
1	A	300	SER	5.6
1	A	296	ASN	5.5
1	A	483	TYR	5.3
1	A	304	SER	5.1
1	A	575	PRO	5.0
1	A	298	SER	4.8
1	A	236	ARG	3.8
1	A	330	THR	3.6
1	A	327	ASP	3.4
1	A	324	LEU	3.2
1	A	305	GLU	3.0
1	A	301	ASP	2.8
1	A	332	TYR	2.8
1	A	303	VAL	2.7
1	A	97	TYR	2.6
1	A	567	LYS	2.5
1	A	375	GLU	2.3
1	A	293	GLY	2.3

Continued on next page...

Continued from previous page...

Mol	Chain	Res	Type	RSRZ
1	A	508	ARG	2.2
1	A	329	SER	2.0
1	A	333	SER	2.0
1	A	294	ASP	2.0

6.2 Non-standard residues in protein, DNA, RNA chains [i](#)

There are no non-standard protein/DNA/RNA residues in this entry.

6.3 Carbohydrates [i](#)

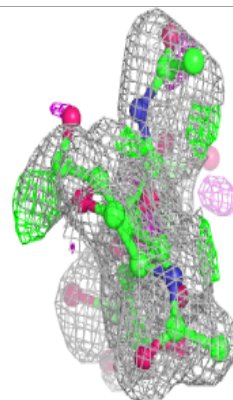
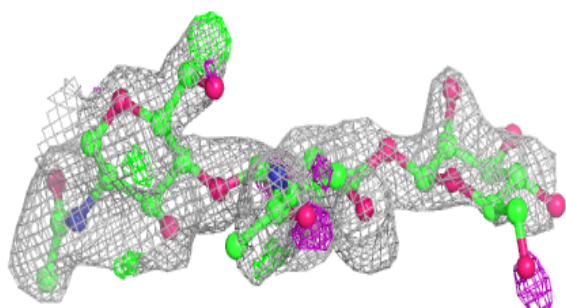
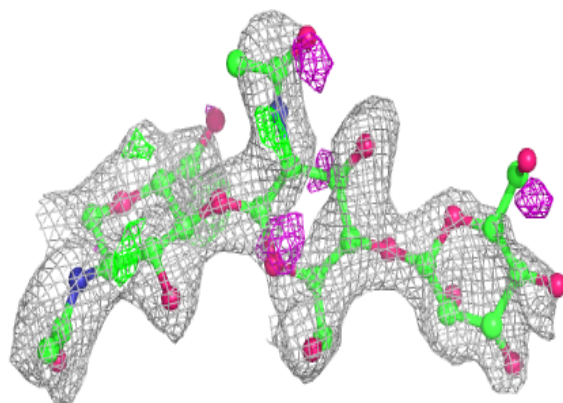
In the following table, the Atoms column lists the number of modelled atoms in the group and the number defined in the chemical component dictionary. The B-factors column lists the minimum, median, 95th percentile and maximum values of B factors of atoms in the group. The column labelled 'Q< 0.9' lists the number of atoms with occupancy less than 0.9.

Mol	Type	Chain	Res	Atoms	RSCC	RSR	B-factors(Å ²)	Q<0.9
3	MAN	C	3	11/12	0.59	0.32	61,63,64,65	0
2	NAG	B	2	14/15	0.61	0.26	52,54,56,59	0
2	BMA	B	3	11/12	0.65	0.37	61,63,64,66	0
3	NAG	C	2	14/15	0.74	0.26	42,50,52,56	0
2	NAG	B	1	14/15	0.77	0.17	39,43,49,50	0
3	NAG	C	1	14/15	0.91	0.11	16,20,30,33	0

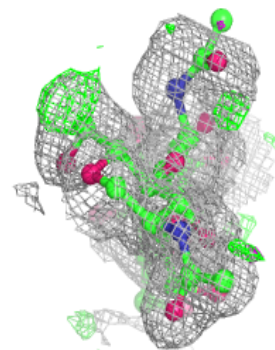
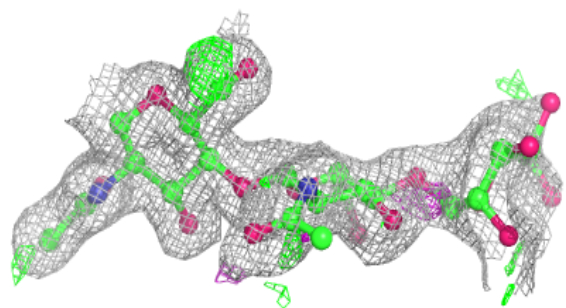
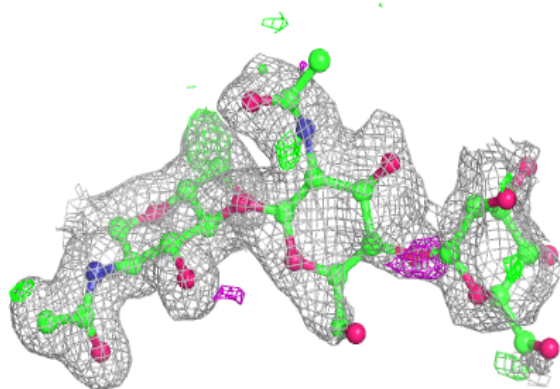
The following is a graphical depiction of the model fit to experimental electron density for oligosaccharide. Each fit is shown from different orientation to approximate a three-dimensional view.

Electron density around Chain B:

$2mF_o-DF_c$ (at 0.7 rmsd) in gray
 mF_o-DF_c (at 3 rmsd) in purple (negative)
and green (positive)

**Electron density around Chain C:**

$2mF_o-DF_c$ (at 0.7 rmsd) in gray
 mF_o-DF_c (at 3 rmsd) in purple (negative)
and green (positive)

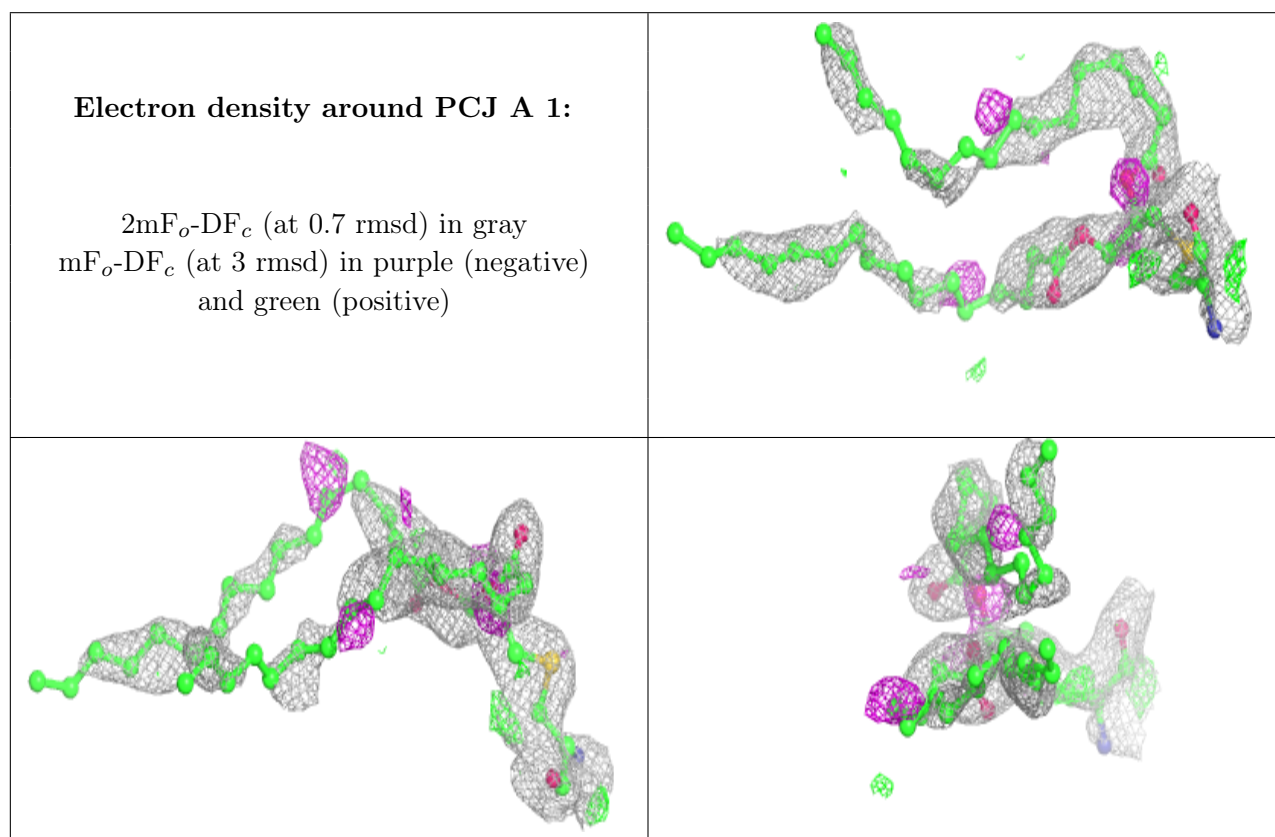


6.4 Ligands [i](#)

In the following table, the Atoms column lists the number of modelled atoms in the group and the number defined in the chemical component dictionary. The B-factors column lists the minimum, median, 95th percentile and maximum values of B factors of atoms in the group. The column labelled 'Q<0.9' lists the number of atoms with occupancy less than 0.9.

Mol	Type	Chain	Res	Atoms	RSCC	RSR	B-factors(Å ²)	Q<0.9
4	NAG	A	821	14/15	0.45	0.36	55,59,61,61	0
5	PCJ	A	1	45/62	0.67	0.29	47,54,60,60	0

The following is a graphical depiction of the model fit to experimental electron density of all instances of the Ligand of Interest. In addition, ligands with molecular weight > 250 and outliers as shown on the geometry validation Tables will also be included. Each fit is shown from different orientation to approximate a three-dimensional view.



6.5 Other polymers [i](#)

There are no such residues in this entry.