



# Full wwPDB X-ray Structure Validation Report ⓘ

Dec 12, 2023 – 05:33 pm GMT

PDB ID : 2XVU  
Title : Human serum albumin complexed with dansyl-L-asparagine  
Authors : Zunszain, P.A.; Curry, S.  
Deposited on : 2010-10-28  
Resolution : 2.60 Å(reported)

This is a Full wwPDB X-ray Structure Validation Report for a publicly released PDB entry.

We welcome your comments at [validation@mail.wwpdb.org](mailto:validation@mail.wwpdb.org)

A user guide is available at

<https://www.wwpdb.org/validation/2017/XrayValidationReportHelp>

with specific help available everywhere you see the ⓘ symbol.

The types of validation reports are described at

<http://www.wwpdb.org/validation/2017/FAQs#types>.

---

The following versions of software and data (see [references ⓘ](#)) were used in the production of this report:

MolProbity : 4.02b-467  
Mogul : 1.8.4, CSD as541be (2020)  
Xtriage (Phenix) : 1.13  
EDS : 2.36  
buster-report : 1.1.7 (2018)  
Percentile statistics : 20191225.v01 (using entries in the PDB archive December 25th 2019)  
Refmac : 5.8.0158  
CCP4 : 7.0.044 (Gargrove)  
Ideal geometry (proteins) : Engh & Huber (2001)  
Ideal geometry (DNA, RNA) : Parkinson et al. (1996)  
Validation Pipeline (wwPDB-VP) : 2.36

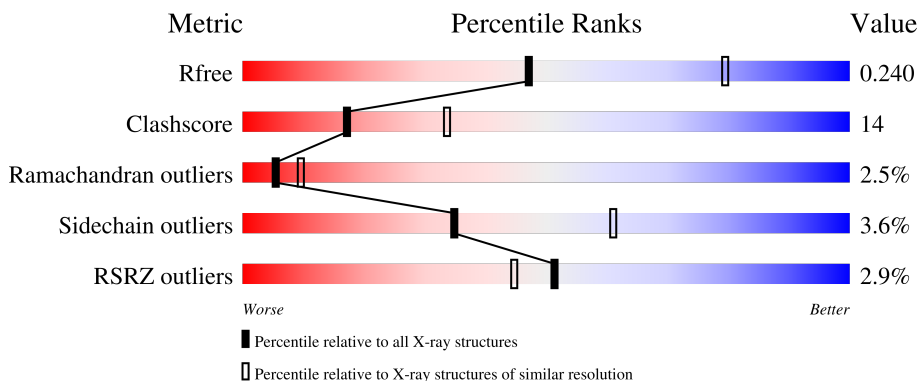
# 1 Overall quality at a glance

The following experimental techniques were used to determine the structure:

*X-RAY DIFFRACTION*

The reported resolution of this entry is 2.60 Å.

Percentile scores (ranging between 0-100) for global validation metrics of the entry are shown in the following graphic. The table shows the number of entries on which the scores are based.



Metric	Whole archive (#Entries)	Similar resolution (#Entries, resolution range(Å))
$R_{free}$	130704	3163 (2.60-2.60)
Clashscore	141614	3518 (2.60-2.60)
Ramachandran outliers	138981	3455 (2.60-2.60)
Sidechain outliers	138945	3455 (2.60-2.60)
RSRZ outliers	127900	3104 (2.60-2.60)

The table below summarises the geometric issues observed across the polymeric chains and their fit to the electron density. The red, orange, yellow and green segments of the lower bar indicate the fraction of residues that contain outliers for  $\geq 3$ , 2, 1 and 0 types of geometric quality criteria respectively. A grey segment represents the fraction of residues that are not modelled. The numeric value for each fraction is indicated below the corresponding segment, with a dot representing fractions  $\leq 5\%$ . The upper red bar (where present) indicates the fraction of residues that have poor fit to the electron density. The numeric value is given above the bar.

Mol	Chain	Length	Quality of chain
1	A	585	 3% 69% 24% • •
1	B	585	 3% 67% 26% • 5%

## 2 Entry composition [i](#)

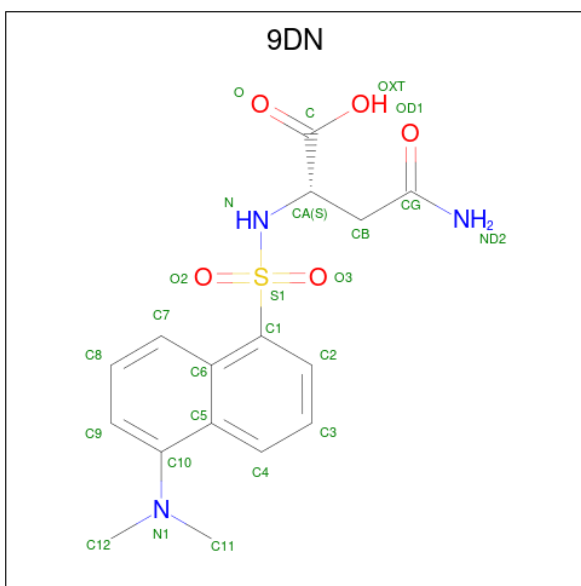
There are 3 unique types of molecules in this entry. The entry contains 8366 atoms, of which 0 are hydrogens and 0 are deuteriums.

In the tables below, the ZeroOcc column contains the number of atoms modelled with zero occupancy, the AltConf column contains the number of residues with at least one atom in alternate conformation and the Trace column contains the number of residues modelled with at most 2 atoms.

- Molecule 1 is a protein called SERUM ALBUMIN.

Mol	Chain	Residues	Atoms					ZeroOcc	AltConf	Trace
			Total	C	N	O	S			
1	A	560	Total	C	N	O	S	0	0	0
			4148	2626	689	794	39			
1	B	557	Total	C	N	O	S	0	0	0
			4083	2578	682	783	40			

- Molecule 2 is DANSYL-L-ASPARAGINE (three-letter code: 9DN) (formula: C<sub>16</sub>H<sub>19</sub>N<sub>3</sub>O<sub>5</sub>S).



Mol	Chain	Residues	Atoms					ZeroOcc	AltConf
			Total	C	N	O	S		
2	A	1	Total	C	N	O	S	0	0
			25	16	3	5	1		
2	A	1	Total	C	N	O	S	0	0
			25	16	3	5	1		
2	B	1	Total	C	N	O	S	0	0
			25	16	3	5	1		
2	B	1	Total	C	N	O	S	0	0
			25	16	3	5	1		

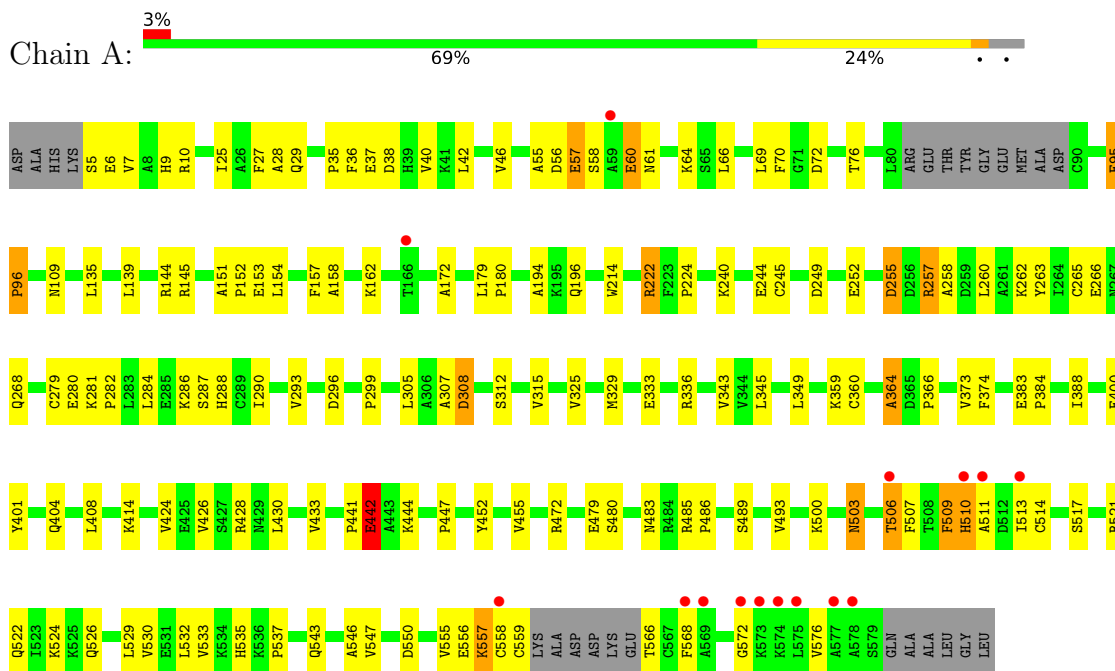
- Molecule 3 is water.

<b>Mol</b>	<b>Chain</b>	<b>Residues</b>	<b>Atoms</b>		<b>ZeroOcc</b>	<b>AltConf</b>
3	A	17	Total 17	O 17	0	0
3	B	18	Total 18	O 18	0	0

### 3 Residue-property plots [i](#)

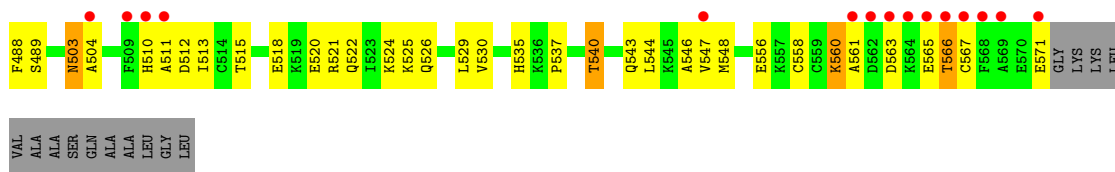
These plots are drawn for all protein, RNA, DNA and oligosaccharide chains in the entry. The first graphic for a chain summarises the proportions of the various outlier classes displayed in the second graphic. The second graphic shows the sequence view annotated by issues in geometry and electron density. Residues are color-coded according to the number of geometric quality criteria for which they contain at least one outlier: green = 0, yellow = 1, orange = 2 and red = 3 or more. A red dot above a residue indicates a poor fit to the electron density ( $RSRZ > 2$ ). Stretches of 2 or more consecutive residues without any outlier are shown as a green connector. Residues present in the sample, but not in the model, are shown in grey.

#### • Molecule 1: SERUM ALBUMIN



#### • Molecule 1: SERUM ALBUMIN





## 4 Data and refinement statistics

Property	Value	Source
Space group	P 1	Depositor
Cell constants a, b, c, $\alpha$ , $\beta$ , $\gamma$	54.85Å 55.25Å 119.73Å 81.34° 90.93° 64.60°	Depositor
Resolution (Å)	35.12 – 2.60 35.12 – 2.60	Depositor EDS
% Data completeness (in resolution range)	97.7 (35.12-2.60) 97.8 (35.12-2.60)	Depositor EDS
$R_{merge}$	0.05	Depositor
$R_{sym}$	(Not available)	Depositor
$\langle I/\sigma(I) \rangle$ <sup>1</sup>	2.24 (at 2.61Å)	Xtrriage
Refinement program	CNS 1.2	Depositor
R, $R_{free}$	0.205 , 0.244 0.200 , 0.240	Depositor DCC
$R_{free}$ test set	1824 reflections (4.75%)	wwPDB-VP
Wilson B-factor (Å <sup>2</sup> )	55.6	Xtrriage
Anisotropy	0.314	Xtrriage
Bulk solvent $k_{sol}$ (e/Å <sup>3</sup> ), $B_{sol}$ (Å <sup>2</sup> )	0.27 , 61.7	EDS
L-test for twinning <sup>2</sup>	$\langle  L  \rangle = 0.50$ , $\langle L^2 \rangle = 0.33$	Xtrriage
Estimated twinning fraction	No twinning to report.	Xtrriage
$F_o, F_c$ correlation	0.95	EDS
Total number of atoms	8366	wwPDB-VP
Average B, all atoms (Å <sup>2</sup> )	63.0	wwPDB-VP

Xtrriage's analysis on translational NCS is as follows: *The largest off-origin peak in the Patterson function is 5.69% of the height of the origin peak. No significant pseudotranslation is detected.*

<sup>1</sup>Intensities estimated from amplitudes.

<sup>2</sup>Theoretical values of  $\langle |L| \rangle$ ,  $\langle L^2 \rangle$  for acentric reflections are 0.5, 0.333 respectively for untwinned datasets, and 0.375, 0.2 for perfectly twinned datasets.

## 5 Model quality [i](#)

### 5.1 Standard geometry [i](#)

Bond lengths and bond angles in the following residue types are not validated in this section: 9DN

The Z score for a bond length (or angle) is the number of standard deviations the observed value is removed from the expected value. A bond length (or angle) with  $|Z| > 5$  is considered an outlier worth inspection. RMSZ is the root-mean-square of all Z scores of the bond lengths (or angles).

Mol	Chain	Bond lengths		Bond angles	
		RMSZ	# Z  >5	RMSZ	# Z  >5
1	A	0.38	0/4229	0.60	0/5759
1	B	0.36	0/4162	0.58	0/5674
All	All	0.37	0/8391	0.59	0/11433

There are no bond length outliers.

There are no bond angle outliers.

There are no chirality outliers.

There are no planarity outliers.

### 5.2 Too-close contacts [i](#)

In the following table, the Non-H and H(model) columns list the number of non-hydrogen atoms and hydrogen atoms in the chain respectively. The H(added) column lists the number of hydrogen atoms added and optimized by MolProbity. The Clashes column lists the number of clashes within the asymmetric unit, whereas Symm-Clashes lists symmetry-related clashes.

Mol	Chain	Non-H	H(model)	H(added)	Clashes	Symm-Clashes
1	A	4148	0	3750	103	0
1	B	4083	0	3660	117	0
2	A	50	0	36	1	0
2	B	50	0	36	1	0
3	A	17	0	0	1	0
3	B	18	0	0	2	0
All	All	8366	0	7482	220	0

The all-atom clashscore is defined as the number of clashes found per 1000 atoms (including hydrogen atoms). The all-atom clashscore for this structure is 14.

All (220) close contacts within the same asymmetric unit are listed below, sorted by their clash



magnitude.

Atom-1	Atom-2	Interatomic distance (Å)	Clash overlap (Å)
1:B:540:THR:HG23	1:B:543:GLN:HB3	1.50	0.94
1:B:483:ASN:O	1:B:486:PRO:HD2	1.77	0.84
1:A:383:GLU:HB3	1:A:384:PRO:HD3	1.57	0.84
1:A:265:CYS:O	1:A:268:GLN:HG3	1.79	0.83
1:B:433:VAL:HG22	1:B:452:TYR:CD2	2.12	0.83
1:B:151:ALA:HB3	1:B:152:PRO:HD3	1.62	0.81
1:A:511:ALA:HA	1:A:514:CYS:SG	2.20	0.81
1:B:414:LYS:HE3	1:B:488:PHE:O	1.82	0.78
1:A:151:ALA:HB3	1:A:152:PRO:HD3	1.65	0.78
1:B:265:CYS:O	1:B:268:GLN:HG3	1.82	0.77
1:A:66:LEU:O	1:A:70:PHE:HD1	1.68	0.77
1:B:419:SER:OG	1:B:421:PRO:HD2	1.84	0.76
1:B:59:ALA:HB3	1:B:62:CYS:SG	2.25	0.76
1:B:567:CYS:SG	1:B:571:GLU:HB2	2.26	0.76
1:B:383:GLU:HB3	1:B:384:PRO:HD3	1.68	0.75
1:A:364:ALA:O	1:A:366:PRO:HD3	1.88	0.73
1:A:433:VAL:HG22	1:A:452:TYR:CD2	2.23	0.73
1:B:540:THR:HG23	1:B:543:GLN:CB	2.19	0.73
1:A:510:HIS:CB	1:A:568:PHE:HA	2.20	0.72
1:A:424:VAL:O	1:A:428:ARG:HG3	1.90	0.71
1:B:95:GLU:OE1	1:B:99:ASN:HB2	1.90	0.70
1:A:145:ARG:HG3	1:A:145:ARG:HH11	1.56	0.70
1:A:384:PRO:O	1:A:388:ILE:HG12	1.93	0.68
1:A:509:PHE:O	1:A:510:HIS:CB	2.41	0.67
1:A:224:PRO:HD2	1:A:296:ASP:HB3	1.77	0.67
1:A:61:ASN:HD22	1:A:64:LYS:HE3	1.60	0.67
1:B:106:LYS:HD3	1:B:147:PRO:HB2	1.78	0.65
1:B:116:VAL:O	1:B:118:PRO:HD3	1.97	0.65
1:A:483:ASN:O	1:A:486:PRO:HD2	1.97	0.65
1:B:305:LEU:HD21	1:B:333:GLU:HB3	1.79	0.64
1:A:95:GLU:CB	1:A:96:PRO:HD3	2.28	0.63
1:A:36:PHE:O	1:A:40:VAL:HG23	1.99	0.63
1:A:483:ASN:C	1:A:486:PRO:HD2	2.18	0.63
1:A:359:LYS:HG3	1:A:360:CYS:N	2.13	0.63
1:B:348:ARG:HG3	1:B:482:VAL:HG12	1.81	0.63
1:A:139:LEU:HD21	1:A:158:ALA:HB2	1.80	0.62
1:A:373:VAL:HG13	1:A:374:PHE:HD1	1.65	0.61
1:A:566:THR:C	1:A:568:PHE:N	2.52	0.61
1:B:206:PHE:CD2	1:B:481:LEU:HD22	2.36	0.61
1:B:179:LEU:HB2	1:B:180:PRO:HD3	1.84	0.60
1:A:260:LEU:HD23	2:A:2001:9DN:H122	1.82	0.60

*Continued on next page...*

*Continued from previous page...*

Atom-1	Atom-2	Interatomic distance (Å)	Clash overlap (Å)
1:B:483:ASN:C	1:B:486:PRO:HD2	2.20	0.60
1:B:398:LEU:HB3	1:B:402:LYS:HB2	1.83	0.60
1:A:566:THR:C	1:A:568:PHE:H	2.04	0.58
1:B:260:LEU:O	1:B:264:ILE:HG13	2.02	0.58
1:B:247:HIS:O	1:B:247:HIS:ND1	2.37	0.58
1:B:348:ARG:HG3	1:B:482:VAL:CG1	2.33	0.58
1:A:305:LEU:HD21	1:A:333:GLU:HB3	1.84	0.58
1:B:39:HIS:O	1:B:43:VAL:HG23	2.03	0.58
1:B:25:ILE:O	1:B:29:GLN:HG3	2.04	0.57
1:A:179:LEU:HB2	1:A:180:PRO:HD3	1.85	0.57
1:B:206:PHE:CE2	1:B:481:LEU:HD13	2.40	0.57
1:B:373:VAL:HG13	1:B:374:PHE:HD1	1.68	0.57
1:A:547:VAL:HA	1:A:550:ASP:OD2	2.04	0.57
1:B:529:LEU:HD22	1:B:548:MET:HE2	1.87	0.57
1:A:400:GLU:O	1:A:404:GLN:HG3	2.05	0.57
1:A:25:ILE:HD13	1:A:154:LEU:HD23	1.86	0.56
1:B:518:GLU:O	1:B:522:GLN:HG3	2.05	0.56
1:B:145:ARG:HG3	1:B:145:ARG:HH11	1.71	0.55
1:B:257:ARG:HD3	1:B:258:ALA:N	2.21	0.55
1:B:464:HIS:CE1	1:B:469:VAL:H	2.24	0.55
1:B:544:LEU:O	1:B:547:VAL:HG12	2.07	0.55
1:B:5:SER:HA	1:B:62:CYS:O	2.06	0.55
1:B:214:TRP:CD1	1:B:343:VAL:HG11	2.41	0.55
1:A:66:LEU:O	1:A:70:PHE:CD1	2.57	0.54
1:A:257:ARG:HD3	1:A:258:ALA:N	2.22	0.54
1:A:61:ASN:HB3	1:A:64:LYS:HD2	1.90	0.54
1:A:500:LYS:O	1:A:535:HIS:ND1	2.41	0.54
1:B:257:ARG:NH2	1:B:284:LEU:HD23	2.23	0.54
1:B:563:ASP:HB2	1:B:566:THR:HB	1.90	0.53
1:A:56:ASP:C	1:A:58:SER:H	2.11	0.53
1:B:400:GLU:O	1:B:404:GLN:HG3	2.08	0.53
1:A:279:CYS:HA	1:A:286:LYS:HD2	1.91	0.53
1:B:388:ILE:HA	2:B:2002:9DN:H9	1.91	0.53
1:A:249:ASP:HB3	1:A:252:GLU:CG	2.40	0.52
1:B:408:LEU:HD11	1:B:526:GLN:HB3	1.91	0.52
1:A:38:ASP:O	1:A:42:LEU:HG	2.10	0.52
1:A:281:LYS:HB2	1:A:282:PRO:CD	2.40	0.52
1:B:337:ARG:HG3	1:B:337:ARG:HH11	1.75	0.52
1:A:42:LEU:O	1:A:46:VAL:HG23	2.10	0.52
1:B:257:ARG:HH22	1:B:284:LEU:HD23	1.74	0.52
1:A:61:ASN:HD22	1:A:64:LYS:CE	2.21	0.51

*Continued on next page...*

*Continued from previous page...*

Atom-1	Atom-2	Interatomic distance (Å)	Clash overlap (Å)
1:B:42:LEU:O	1:B:46:VAL:HG23	2.09	0.51
1:A:555:VAL:O	1:A:559:CYS:HB2	2.10	0.51
1:B:376:GLU:O	1:B:379:PRO:HD2	2.10	0.51
1:A:145:ARG:HG3	1:A:145:ARG:NH1	2.23	0.51
1:B:56:ASP:O	1:B:57:GLU:C	2.49	0.51
1:A:290:ILE:O	1:A:293:VAL:HG12	2.11	0.51
1:B:39:HIS:HD2	1:B:140:TYR:HE1	1.59	0.51
1:B:150:TYR:HD2	1:B:153:GLU:HB2	1.76	0.51
1:A:262:LYS:O	1:A:266:GLU:HG3	2.11	0.50
1:B:372:LYS:N	3:B:3009:HOH:O	2.25	0.50
1:A:572:GLY:O	1:A:576:VAL:HG23	2.11	0.50
1:B:483:ASN:O	1:B:486:PRO:CD	2.56	0.50
1:B:520:GLU:O	1:B:524:LYS:HG2	2.11	0.50
1:B:20:LYS:HE3	1:B:47:THR:HG21	1.94	0.50
1:B:561:ALA:HB3	1:B:563:ASP:OD1	2.11	0.50
1:B:485:ARG:HB3	1:B:486:PRO:HD3	1.92	0.50
1:B:543:GLN:O	1:B:546:ALA:HB3	2.12	0.50
1:A:373:VAL:HG13	1:A:374:PHE:CD1	2.45	0.50
1:B:289:CYS:O	1:B:293:VAL:HG13	2.11	0.50
1:A:522:GLN:O	1:A:526:GLN:HG3	2.13	0.49
1:B:367:HIS:O	1:B:371:ALA:HB2	2.12	0.49
1:B:398:LEU:HB3	1:B:402:LYS:CB	2.42	0.49
1:A:506:THR:HG22	1:A:507:PHE:CD1	2.48	0.49
1:B:511:ALA:C	1:B:513:ILE:H	2.14	0.49
1:A:485:ARG:HB3	1:A:486:PRO:HD3	1.94	0.49
1:A:345:LEU:O	1:A:349:LEU:HG	2.12	0.49
1:B:529:LEU:HD22	1:B:548:MET:CE	2.42	0.49
1:A:513:ILE:HG13	1:A:514:CYS:N	2.26	0.49
1:A:414:LYS:O	1:A:472:ARG:NH1	2.46	0.48
1:B:47:THR:O	1:B:50:ALA:HB3	2.12	0.48
1:A:25:ILE:CD1	1:A:154:LEU:HD23	2.44	0.48
1:B:447:PRO:O	1:B:451:ASP:HB2	2.13	0.48
1:B:194:ALA:HB1	1:B:455:VAL:CG1	2.43	0.48
1:A:72:ASP:O	1:A:76:THR:HG23	2.13	0.48
1:A:521:ARG:O	1:A:524:LYS:HB2	2.14	0.48
1:B:110:PRO:HB2	1:B:112:LEU:HG	1.96	0.48
1:B:111:ASN:O	1:B:112:LEU:HD23	2.14	0.48
1:A:7:VAL:HG21	1:A:69:LEU:CD1	2.44	0.48
1:B:511:ALA:C	1:B:513:ILE:N	2.67	0.48
1:B:364:ALA:O	1:B:366:PRO:HD3	2.14	0.48
1:A:35:PRO:HD2	1:A:38:ASP:OD2	2.13	0.47

*Continued on next page...*

*Continued from previous page...*

Atom-1	Atom-2	Interatomic distance (Å)	Clash overlap (Å)
1:B:36:PHE:O	1:B:40:VAL:HG23	2.14	0.47
1:B:414:LYS:CE	1:B:488:PHE:O	2.58	0.47
1:B:9:HIS:HD2	1:B:13:ASP:OD1	1.98	0.47
1:A:66:LEU:HD12	1:A:252:GLU:OE2	2.15	0.47
1:A:153:GLU:OE2	1:A:288:HIS:ND1	2.41	0.47
1:B:161:TYR:O	1:B:164:ALA:HB3	2.14	0.47
1:B:322:ALA:HB1	1:B:325:VAL:HB	1.96	0.47
1:B:408:LEU:HD22	1:B:530:VAL:CG2	2.44	0.47
1:A:9:HIS:ND1	1:A:9:HIS:C	2.68	0.47
1:A:308:ASP:N	1:A:308:ASP:OD1	2.48	0.47
1:A:543:GLN:O	1:A:546:ALA:HB3	2.15	0.47
1:B:474:THR:O	1:B:478:THR:HG23	2.15	0.47
1:B:535:HIS:C	1:B:537:PRO:HD3	2.34	0.47
1:A:281:LYS:HB2	1:A:282:PRO:HD2	1.97	0.46
1:A:359:LYS:CG	1:A:360:CYS:N	2.78	0.46
1:B:384:PRO:O	1:B:388:ILE:HG12	2.15	0.46
1:A:257:ARG:HD3	1:A:257:ARG:C	2.36	0.46
1:A:401:TYR:HE1	1:A:522:GLN:HB3	1.80	0.46
1:A:408:LEU:HD22	1:A:530:VAL:CG2	2.46	0.46
1:B:39:HIS:HD2	1:B:140:TYR:CE1	2.33	0.46
1:B:222:ARG:HA	1:B:295:ASN:OD1	2.15	0.46
1:A:25:ILE:O	1:A:29:GLN:HG3	2.15	0.46
1:A:325:VAL:O	1:A:329:MET:HG3	2.15	0.46
1:B:74:LEU:C	1:B:76:THR:H	2.20	0.46
1:B:456:VAL:O	1:B:459:GLN:HB2	2.16	0.45
1:B:305:LEU:CD2	1:B:333:GLU:HB3	2.45	0.45
1:A:222:ARG:O	1:A:224:PRO:HD3	2.16	0.45
1:A:408:LEU:HD11	1:A:526:GLN:HB3	1.97	0.45
1:A:222:ARG:C	1:A:224:PRO:HD3	2.37	0.45
1:B:91:CYS:C	1:B:93:LYS:H	2.18	0.45
1:A:5:SER:HB3	1:A:57:GLU:HG3	1.99	0.45
1:B:388:ILE:HD12	1:B:449:ALA:CB	2.46	0.45
1:A:535:HIS:C	1:A:537:PRO:HD3	2.38	0.45
1:A:257:ARG:HH22	1:A:284:LEU:HD23	1.81	0.45
1:B:91:CYS:C	1:B:93:LYS:N	2.69	0.44
1:B:510:HIS:CD2	1:B:512:ASP:H	2.35	0.44
1:A:240:LYS:O	1:A:244:GLU:HG3	2.17	0.44
1:B:66:LEU:HG	3:B:3003:HOH:O	2.17	0.44
1:B:253:CYS:O	1:B:257:ARG:HB3	2.17	0.44
1:A:503:ASN:O	1:A:506:THR:HB	2.17	0.44
1:B:91:CYS:O	1:B:93:LYS:N	2.51	0.44

*Continued on next page...*

*Continued from previous page...*

Atom-1	Atom-2	Interatomic distance (Å)	Clash overlap (Å)
1:B:464:HIS:CE1	1:B:470:SER:H	2.36	0.44
1:B:263:TYR:CD1	1:B:263:TYR:C	2.91	0.44
1:B:196:GLN:NE2	1:B:196:GLN:HA	2.33	0.44
1:B:503:ASN:HD22	1:B:503:ASN:HA	1.54	0.43
1:A:153:GLU:O	1:A:157:PHE:HD2	2.01	0.43
1:A:214:TRP:CD1	1:A:343:VAL:HG11	2.53	0.43
1:B:511:ALA:O	1:B:513:ILE:N	2.51	0.43
1:B:359:LYS:CG	1:B:360:CYS:N	2.81	0.43
1:B:336:ARG:HD3	1:B:337:ARG:HH12	1.83	0.43
1:B:558:CYS:C	1:B:560:LYS:H	2.21	0.43
1:A:566:THR:O	1:A:568:PHE:N	2.51	0.43
1:B:560:LYS:O	1:B:560:LYS:HG3	2.18	0.43
1:A:10:ARG:NH1	1:A:255:ASP:OD2	2.44	0.43
1:B:14:LEU:O	1:B:18:ASN:HB2	2.19	0.42
1:A:444:LYS:O	1:A:447:PRO:HD2	2.20	0.42
1:B:540:THR:CG2	1:B:543:GLN:HB3	2.34	0.42
1:A:28:ALA:O	1:A:144:ARG:HA	2.19	0.42
1:A:426:VAL:O	1:A:430:LEU:HG	2.19	0.42
1:B:168:CYS:SG	1:B:177:CYS:C	2.98	0.42
1:A:27:PHE:HE1	1:A:70:PHE:HD2	1.68	0.42
1:B:145:ARG:HG3	1:B:145:ARG:NH1	2.35	0.42
1:B:366:PRO:O	1:B:369:CYS:N	2.52	0.42
1:B:366:PRO:O	1:B:368:GLU:N	2.52	0.42
1:B:257:ARG:HD3	1:B:257:ARG:C	2.40	0.42
1:B:388:ILE:HD12	1:B:449:ALA:HB3	2.01	0.42
1:A:135:LEU:HD11	1:A:162:LYS:CD	2.49	0.41
1:B:248:GLY:O	1:B:250:LEU:N	2.52	0.41
1:B:107:ASP:HB3	1:B:110:PRO:HG3	2.02	0.41
1:B:109:ASN:N	1:B:110:PRO:HD3	2.34	0.41
1:B:168:CYS:C	1:B:170:GLN:H	2.23	0.41
1:B:521:ARG:O	1:B:524:LYS:HB2	2.21	0.41
1:A:95:GLU:CB	1:A:96:PRO:CD	2.98	0.41
1:A:257:ARG:HH22	1:A:284:LEU:CD2	2.32	0.41
1:A:6:GLU:O	1:A:9:HIS:HB3	2.21	0.41
1:A:60:GLU:OE1	1:A:60:GLU:HA	2.21	0.41
1:A:529:LEU:O	1:A:533:VAL:HG23	2.20	0.41
1:A:27:PHE:CE1	1:A:70:PHE:HD2	2.38	0.41
1:A:249:ASP:HB3	1:A:252:GLU:CD	2.40	0.41
1:A:281:LYS:HE2	1:A:281:LYS:HB3	1.82	0.41
1:A:506:THR:HG22	1:A:507:PHE:CE1	2.56	0.41
1:A:194:ALA:HB1	1:A:455:VAL:CG1	2.51	0.41

*Continued on next page...*

Continued from previous page...

Atom-1	Atom-2	Interatomic distance (Å)	Clash overlap (Å)
1:A:556:GLU:HG3	1:A:557:LYS:H	1.86	0.41
1:B:57:GLU:O	1:B:59:ALA:N	2.54	0.41
1:B:179:LEU:CD2	1:B:179:LEU:H	2.34	0.41
1:A:441:PRO:O	1:A:442:GLU:C	2.59	0.41
1:B:556:GLU:O	1:B:556:GLU:HG2	2.21	0.40
1:A:224:PRO:HB2	1:A:299:PRO:HD3	2.03	0.40
1:B:260:LEU:O	1:B:260:LEU:HD23	2.21	0.40
1:B:522:GLN:HA	1:B:525:LYS:HD3	2.03	0.40
1:A:196:GLN:NE2	3:A:3007:HOH:O	2.54	0.40
1:B:305:LEU:HD23	1:B:305:LEU:HA	1.92	0.40
1:B:441:PRO:O	1:B:442:GLU:C	2.60	0.40
1:B:544:LEU:C	1:B:546:ALA:N	2.74	0.40
1:A:263:TYR:C	1:A:263:TYR:CD1	2.94	0.40
1:A:333:GLU:HA	1:A:336:ARG:HD2	2.03	0.40
1:A:557:LYS:HG2	1:A:558:CYS:N	2.37	0.40

There are no symmetry-related clashes.

## 5.3 Torsion angles [i](#)

### 5.3.1 Protein backbone [i](#)

In the following table, the Percentiles column shows the percent Ramachandran outliers of the chain as a percentile score with respect to all X-ray entries followed by that with respect to entries of similar resolution.

The Analysed column shows the number of residues for which the backbone conformation was analysed, and the total number of residues.

Mol	Chain	Analysed	Favoured	Allowed	Outliers	Percentiles
1	A	554/585 (95%)	496 (90%)	43 (8%)	15 (3%)	<b>5</b> <b>8</b>
1	B	553/585 (94%)	481 (87%)	59 (11%)	13 (2%)	<b>6</b> <b>10</b>
All	All	1107/1170 (95%)	977 (88%)	102 (9%)	28 (2%)	<b>5</b> <b>9</b>

All (28) Ramachandran outliers are listed below:

Mol	Chain	Res	Type
1	A	95	GLU
1	A	510	HIS
1	B	57	GLU

Continued on next page...

*Continued from previous page...*

Mol	Chain	Res	Type
1	B	58	SER
1	B	565	GLU
1	A	55	ALA
1	A	172	ALA
1	A	509	PHE
1	A	517	SER
1	B	279	CYS
1	B	300	ALA
1	B	367	HIS
1	B	566	THR
1	A	364	ALA
1	B	75	CYS
1	B	150	TYR
1	B	504	ALA
1	B	560	LYS
1	A	57	GLU
1	A	60	GLU
1	A	442	GLU
1	A	312	SER
1	A	315	VAL
1	B	442	GLU
1	A	307	ALA
1	A	557	LYS
1	A	96	PRO
1	B	366	PRO

### 5.3.2 Protein sidechains [i](#)

In the following table, the Percentiles column shows the percent sidechain outliers of the chain as a percentile score with respect to all X-ray entries followed by that with respect to entries of similar resolution.

The Analysed column shows the number of residues for which the sidechain conformation was analysed, and the total number of residues.

Mol	Chain	Analysed	Rotameric	Outliers	Percentiles	
1	A	403/511 (79%)	386 (96%)	17 (4%)	30	55
1	B	392/511 (77%)	380 (97%)	12 (3%)	40	66
All	All	795/1022 (78%)	766 (96%)	29 (4%)	35	61

All (29) residues with a non-rotameric sidechain are listed below:

Mol	Chain	Res	Type
1	A	37	GLU
1	A	109	ASN
1	A	222	ARG
1	A	245	CYS
1	A	255	ASP
1	A	257	ARG
1	A	280	GLU
1	A	287	SER
1	A	308	ASP
1	A	442	GLU
1	A	479	GLU
1	A	480	SER
1	A	489	SER
1	A	493	VAL
1	A	503	ASN
1	A	506	THR
1	A	532	LEU
1	B	56	ASP
1	B	182	LEU
1	B	245	CYS
1	B	257	ARG
1	B	311	GLU
1	B	344	VAL
1	B	375	ASP
1	B	480	SER
1	B	489	SER
1	B	503	ASN
1	B	515	THR
1	B	540	THR

Sometimes sidechains can be flipped to improve hydrogen bonding and reduce clashes. All (14) such sidechains are listed below:

Mol	Chain	Res	Type
1	A	61	ASN
1	A	109	ASN
1	A	196	GLN
1	A	247	HIS
1	A	464	HIS
1	A	483	ASN
1	A	503	ASN
1	A	543	GLN
1	B	9	HIS
1	B	39	HIS

*Continued on next page...*



Continued from previous page...

Mol	Chain	Res	Type
1	B	196	GLN
1	B	464	HIS
1	B	483	ASN
1	B	503	ASN

### 5.3.3 RNA [i](#)

There are no RNA molecules in this entry.

### 5.4 Non-standard residues in protein, DNA, RNA chains [i](#)

There are no non-standard protein/DNA/RNA residues in this entry.

### 5.5 Carbohydrates [i](#)

There are no monosaccharides in this entry.

### 5.6 Ligand geometry [i](#)

4 ligands are modelled in this entry.

In the following table, the Counts columns list the number of bonds (or angles) for which Mogul statistics could be retrieved, the number of bonds (or angles) that are observed in the model and the number of bonds (or angles) that are defined in the Chemical Component Dictionary. The Link column lists molecule types, if any, to which the group is linked. The Z score for a bond length (or angle) is the number of standard deviations the observed value is removed from the expected value. A bond length (or angle) with  $|Z| > 2$  is considered an outlier worth inspection. RMSZ is the root-mean-square of all Z scores of the bond lengths (or angles).

Mol	Type	Chain	Res	Link	Bond lengths			Bond angles		
					Counts	RMSZ	$\# Z  > 2$	Counts	RMSZ	$\# Z  > 2$
2	9DN	B	2002	-	26,26,26	1.91	7 (26%)	37,38,38	1.42	7 (18%)
2	9DN	B	2001	-	26,26,26	2.27	9 (34%)	37,38,38	1.21	3 (8%)
2	9DN	A	2001	-	26,26,26	2.23	9 (34%)	37,38,38	1.24	5 (13%)
2	9DN	A	2002	-	26,26,26	1.95	7 (26%)	37,38,38	1.39	6 (16%)

In the following table, the Chirals column lists the number of chiral outliers, the number of chiral centers analysed, the number of these observed in the model and the number defined in the Chemical Component Dictionary. Similar counts are reported in the Torsion and Rings columns. '-' means no outliers of that kind were identified.

Mol	Type	Chain	Res	Link	Chirals	Torsions	Rings
2	9DN	B	2002	-	-	4/23/23/23	0/2/2/2
2	9DN	B	2001	-	-	4/23/23/23	0/2/2/2
2	9DN	A	2001	-	-	3/23/23/23	0/2/2/2
2	9DN	A	2002	-	-	5/23/23/23	0/2/2/2

All (32) bond length outliers are listed below:

Mol	Chain	Res	Type	Atoms	Z	Observed(Å)	Ideal(Å)
2	B	2001	9DN	C1-S1	6.16	1.84	1.77
2	A	2001	9DN	C1-S1	6.16	1.84	1.77
2	A	2002	9DN	C1-S1	4.71	1.82	1.77
2	B	2002	9DN	C1-S1	4.02	1.82	1.77
2	B	2001	9DN	C1-C6	3.85	1.49	1.43
2	A	2001	9DN	C1-C6	3.81	1.49	1.43
2	A	2002	9DN	C1-C6	3.61	1.49	1.43
2	B	2002	9DN	C8-C9	3.60	1.46	1.38
2	B	2001	9DN	C9-C10	3.58	1.45	1.38
2	B	2001	9DN	C8-C9	3.51	1.46	1.38
2	B	2002	9DN	C1-C6	3.47	1.49	1.43
2	A	2001	9DN	C9-C10	3.38	1.45	1.38
2	B	2002	9DN	C9-C10	3.32	1.44	1.38
2	A	2001	9DN	C8-C9	3.30	1.45	1.38
2	B	2001	9DN	C6-C5	3.23	1.49	1.43
2	A	2002	9DN	C8-C9	3.20	1.45	1.38
2	A	2002	9DN	C9-C10	3.19	1.44	1.38
2	A	2001	9DN	C6-C5	3.01	1.49	1.43
2	B	2002	9DN	C6-C5	2.97	1.48	1.43
2	B	2001	9DN	O-C	2.91	1.31	1.22
2	A	2002	9DN	C6-C5	2.86	1.48	1.43
2	A	2001	9DN	O-C	2.84	1.30	1.22
2	A	2002	9DN	O-C	2.74	1.30	1.22
2	B	2002	9DN	O-C	2.66	1.30	1.22
2	B	2002	9DN	OXT-C	-2.47	1.22	1.30
2	A	2002	9DN	OXT-C	-2.41	1.22	1.30
2	A	2001	9DN	OXT-C	-2.36	1.22	1.30
2	B	2001	9DN	OXT-C	-2.29	1.23	1.30
2	B	2001	9DN	S1-N	2.27	1.65	1.61
2	A	2001	9DN	S1-N	2.21	1.65	1.61
2	B	2001	9DN	C10-C5	2.09	1.47	1.42
2	A	2001	9DN	C10-C5	2.09	1.47	1.42

All (21) bond angle outliers are listed below:

Mol	Chain	Res	Type	Atoms	Z	Observed(°)	Ideal(°)
2	A	2001	9DN	C12-N1-C11	-3.13	106.03	116.12
2	B	2001	9DN	C12-N1-C11	-3.11	106.10	116.12
2	B	2002	9DN	C12-N1-C11	-3.09	106.15	116.12
2	A	2002	9DN	C12-N1-C11	-2.86	106.89	116.12
2	A	2002	9DN	CB-CA-N	-2.68	106.79	109.94
2	B	2002	9DN	C-CA-N	2.63	117.44	111.71
2	B	2002	9DN	OXT-C-CA	2.62	122.12	113.40
2	A	2002	9DN	O3-S1-O2	-2.51	116.46	119.55
2	A	2002	9DN	OXT-C-CA	2.49	121.67	113.40
2	A	2002	9DN	C-CA-N	2.47	117.09	111.71
2	B	2002	9DN	C10-C5-C6	2.44	121.97	119.33
2	B	2002	9DN	O3-S1-O2	-2.42	116.57	119.55
2	B	2002	9DN	CB-CA-N	-2.36	107.17	109.94
2	A	2001	9DN	OXT-C-CA	2.33	121.16	113.40
2	A	2001	9DN	O3-S1-O2	-2.33	116.69	119.55
2	B	2001	9DN	OXT-C-CA	2.32	121.12	113.40
2	A	2002	9DN	C10-C5-C6	2.27	121.78	119.33
2	B	2001	9DN	C10-C5-C6	2.22	121.72	119.33
2	A	2001	9DN	C10-C5-C6	2.13	121.64	119.33
2	A	2001	9DN	C-CA-N	2.12	116.33	111.71
2	B	2002	9DN	C4-C5-C10	-2.03	119.23	122.74

There are no chirality outliers.

All (16) torsion outliers are listed below:

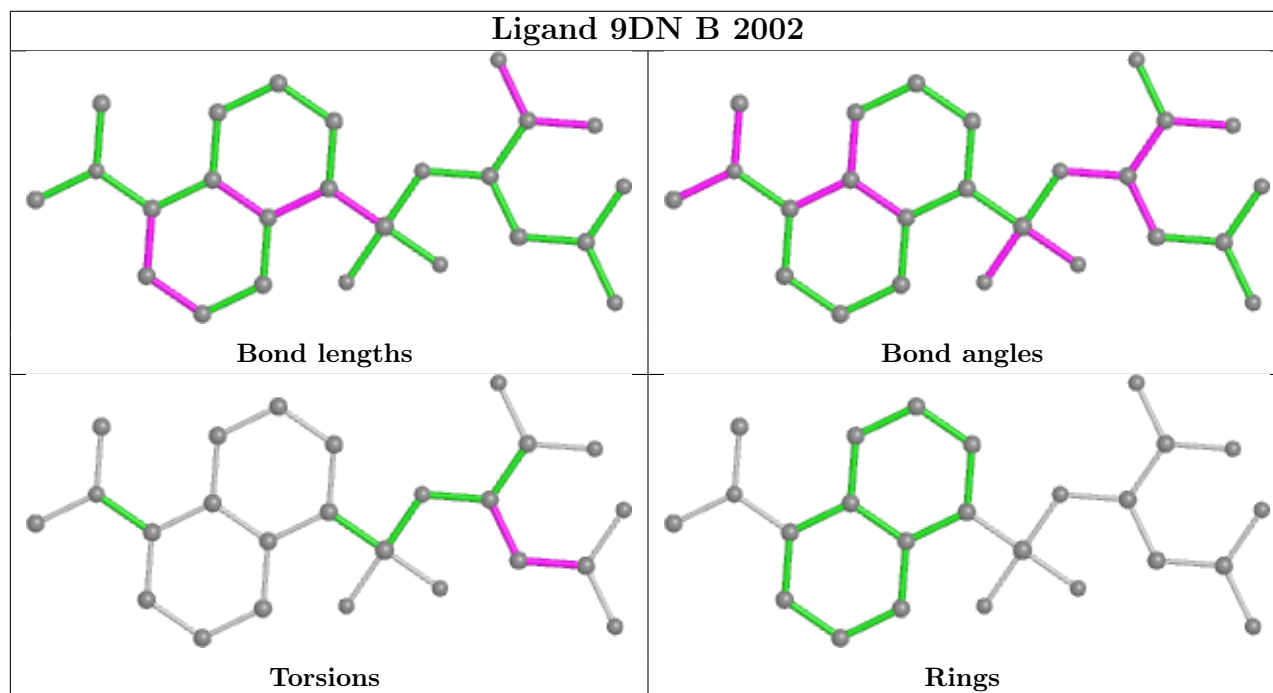
Mol	Chain	Res	Type	Atoms
2	A	2001	9DN	C-CA-CB-CG
2	B	2001	9DN	N-CA-CB-CG
2	B	2001	9DN	C-CA-CB-CG
2	B	2002	9DN	N-CA-CB-CG
2	B	2002	9DN	C-CA-CB-CG
2	A	2001	9DN	CA-N-S1-O3
2	B	2001	9DN	CA-N-S1-O3
2	A	2001	9DN	CA-N-S1-C1
2	B	2001	9DN	CA-N-S1-C1
2	A	2002	9DN	CA-CB-CG-OD1
2	A	2002	9DN	CA-CB-CG-ND2
2	A	2002	9DN	C-CA-N-S1
2	B	2002	9DN	CA-CB-CG-ND2
2	B	2002	9DN	CA-CB-CG-OD1
2	A	2002	9DN	C-CA-CB-CG
2	A	2002	9DN	N-CA-CB-CG

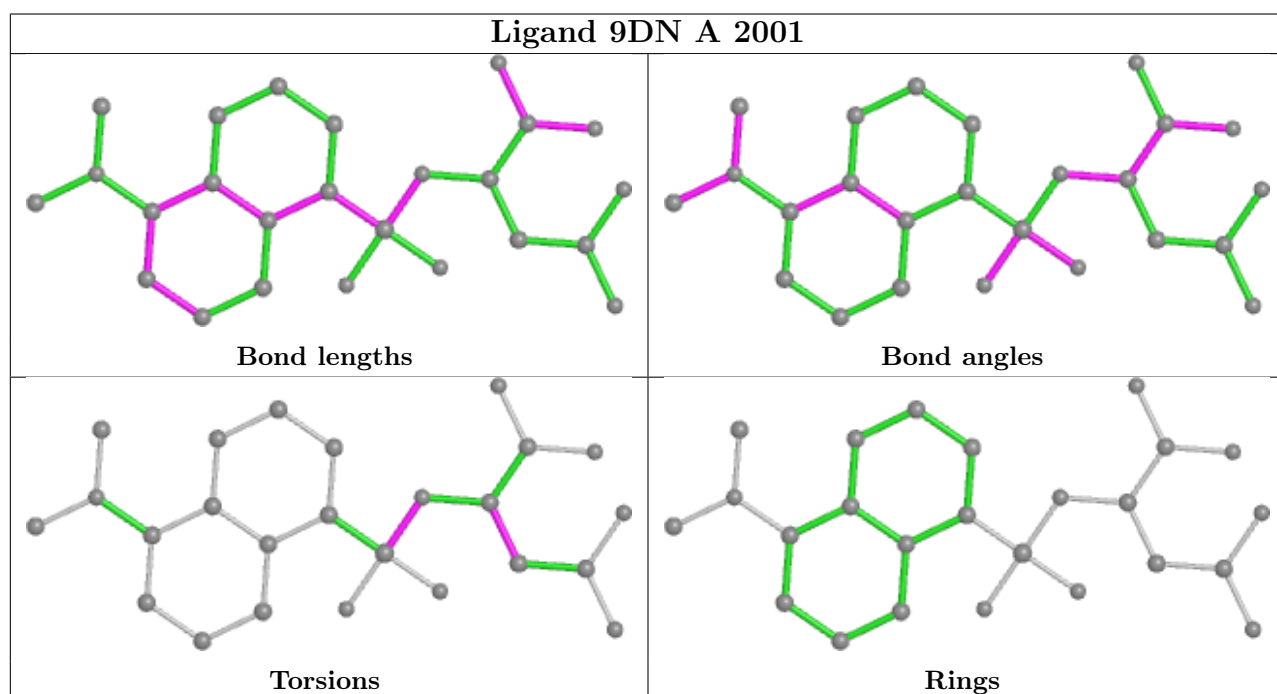
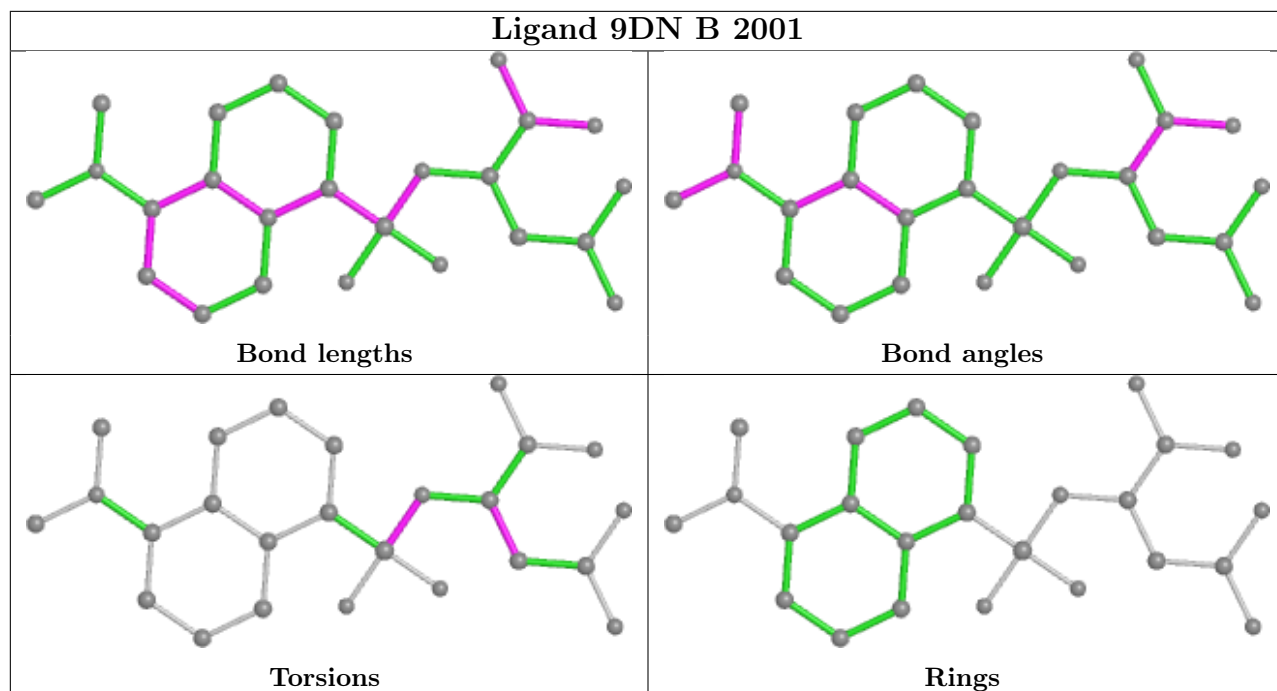
There are no ring outliers.

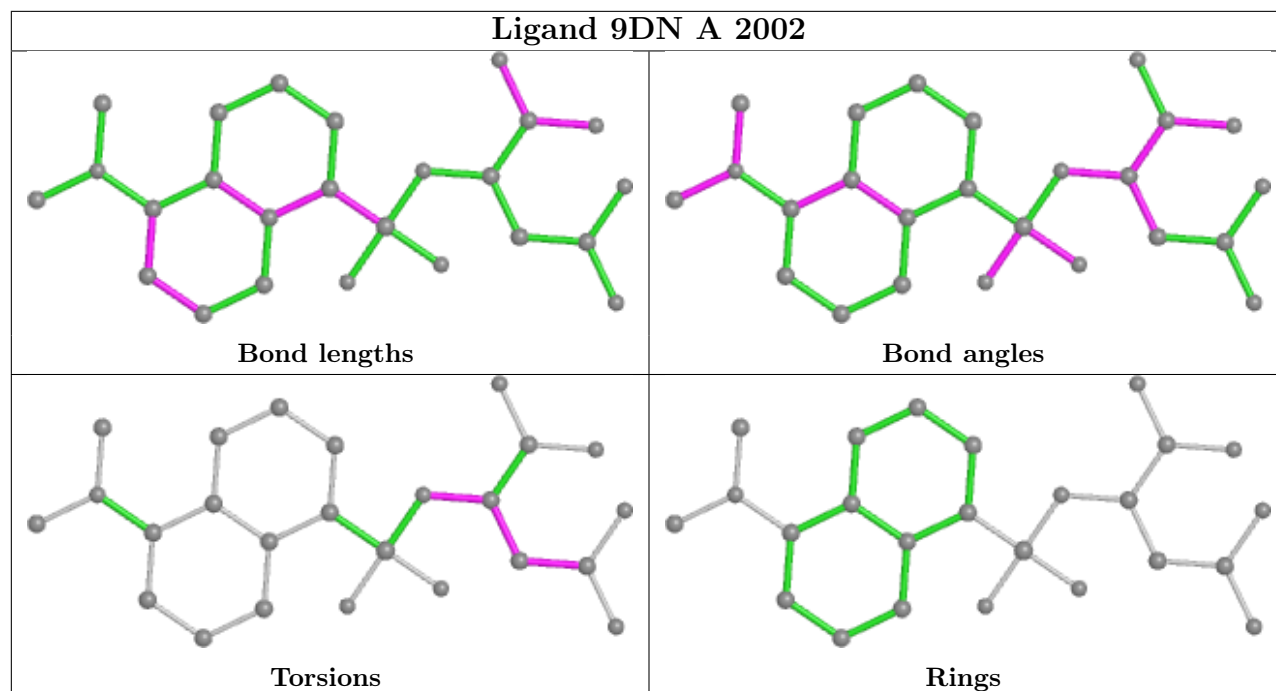
2 monomers are involved in 2 short contacts:

Mol	Chain	Res	Type	Clashes	Symm-Clashes
2	B	2002	9DN	1	0
2	A	2001	9DN	1	0

The following is a two-dimensional graphical depiction of Mogul quality analysis of bond lengths, bond angles, torsion angles, and ring geometry for all instances of the Ligand of Interest. In addition, ligands with molecular weight > 250 and outliers as shown on the validation Tables will also be included. For torsion angles, if less than 5% of the Mogul distribution of torsion angles is within 10 degrees of the torsion angle in question, then that torsion angle is considered an outlier. Any bond that is central to one or more torsion angles identified as an outlier by Mogul will be highlighted in the graph. For rings, the root-mean-square deviation (RMSD) between the ring in question and similar rings identified by Mogul is calculated over all ring torsion angles. If the average RMSD is greater than 60 degrees and the minimal RMSD between the ring in question and any Mogul-identified rings is also greater than 60 degrees, then that ring is considered an outlier. The outliers are highlighted in purple. The color gray indicates Mogul did not find sufficient equivalents in the CSD to analyse the geometry.







## 5.7 Other polymers [i](#)

There are no such residues in this entry.

## 5.8 Polymer linkage issues [i](#)

There are no chain breaks in this entry.

## 6 Fit of model and data

### 6.1 Protein, DNA and RNA chains

In the following table, the column labelled ‘#RSRZ > 2’ contains the number (and percentage) of RSRZ outliers, followed by percent RSRZ outliers for the chain as percentile scores relative to all X-ray entries and entries of similar resolution. The OWAB column contains the minimum, median, 95<sup>th</sup> percentile and maximum values of the occupancy-weighted average B-factor per residue. The column labelled ‘Q < 0.9’ lists the number of (and percentage) of residues with an average occupancy less than 0.9.

Mol	Chain	Analysed	<RSRZ>	#RSRZ>2	OWAB(Å <sup>2</sup> )	Q<0.9
1	A	560/585 (95%)	-0.28	15 (2%) 54 48	29, 59, 121, 155	0
1	B	557/585 (95%)	-0.26	17 (3%) 49 42	26, 62, 113, 146	0
All	All	1117/1170 (95%)	-0.27	32 (2%) 51 45	26, 61, 118, 155	0

All (32) RSRZ outliers are listed below:

Mol	Chain	Res	Type	RSRZ
1	A	569	ALA	6.1
1	B	562	ASP	5.9
1	B	564	LYS	4.7
1	A	510	HIS	4.6
1	A	511	ALA	4.2
1	B	566	THR	3.9
1	A	568	PHE	3.7
1	B	563	ASP	3.3
1	B	561	ALA	3.2
1	A	578	ALA	3.2
1	B	171	ALA	3.2
1	A	513	ILE	3.0
1	B	510	HIS	3.0
1	B	569	ALA	2.9
1	B	565	GLU	2.8
1	B	571	GLU	2.7
1	A	574	LYS	2.6
1	A	575	LEU	2.6
1	A	572	GLY	2.5
1	B	172	ALA	2.5
1	B	567	CYS	2.5
1	A	573	LYS	2.4
1	A	558	CYS	2.4
1	A	577	ALA	2.4

*Continued on next page...*

*Continued from previous page...*

Mol	Chain	Res	Type	RSRZ
1	A	166	THR	2.3
1	B	568	PHE	2.3
1	B	511	ALA	2.3
1	B	547	VAL	2.3
1	A	59	ALA	2.2
1	A	506	THR	2.1
1	B	509	PHE	2.1
1	B	504	ALA	2.1

## 6.2 Non-standard residues in protein, DNA, RNA chains [i](#)

There are no non-standard protein/DNA/RNA residues in this entry.

## 6.3 Carbohydrates [i](#)

There are no monosaccharides in this entry.

## 6.4 Ligands [i](#)

In the following table, the Atoms column lists the number of modelled atoms in the group and the number defined in the chemical component dictionary. The B-factors column lists the minimum, median, 95<sup>th</sup> percentile and maximum values of B factors of atoms in the group. The column labelled 'Q < 0.9' lists the number of atoms with occupancy less than 0.9.

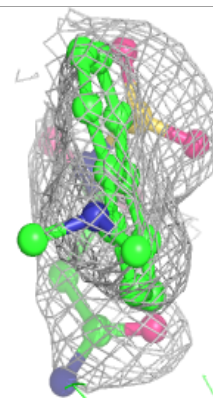
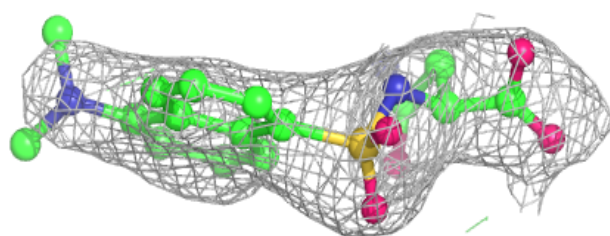
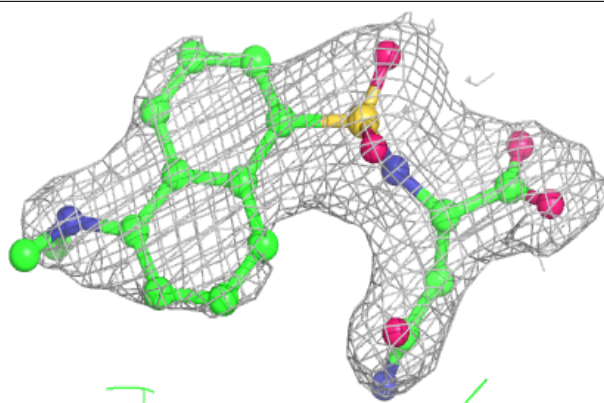
Mol	Type	Chain	Res	Atoms	RSCC	RSR	B-factors(Å <sup>2</sup> )	Q < 0.9
2	9DN	B	2001	25/25	0.93	0.19	69,76,81,83	0
2	9DN	A	2001	25/25	0.94	0.18	68,72,74,74	0
2	9DN	B	2002	25/25	0.95	0.20	60,63,70,71	0
2	9DN	A	2002	25/25	0.96	0.19	52,56,71,74	0

The following is a graphical depiction of the model fit to experimental electron density of all instances of the Ligand of Interest. In addition, ligands with molecular weight > 250 and outliers as shown on the geometry validation Tables will also be included. Each fit is shown from different orientation to approximate a three-dimensional view.

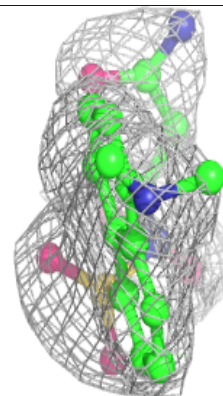
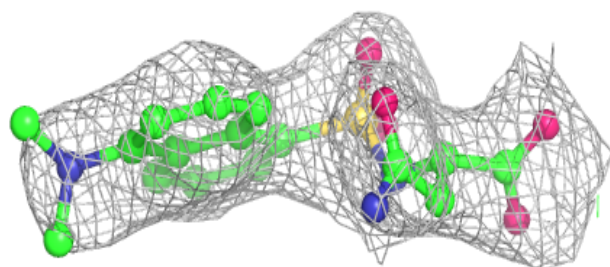
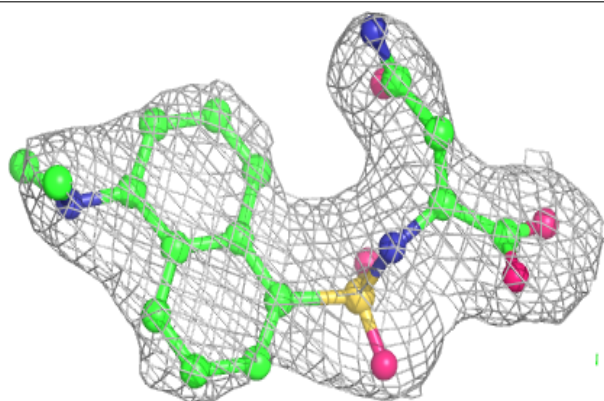


**Electron density around 9DN B 2001:**

$2mF_o-DF_c$  (at 0.7 rmsd) in gray  
 $mF_o-DF_c$  (at 3 rmsd) in purple (negative)  
and green (positive)

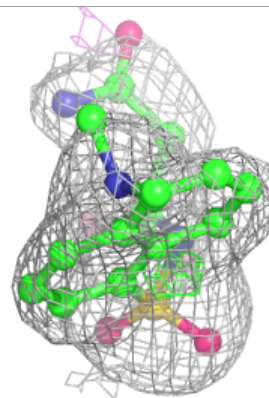
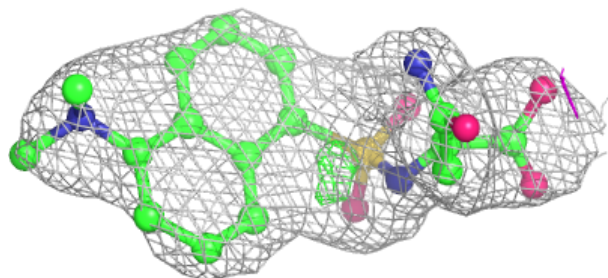
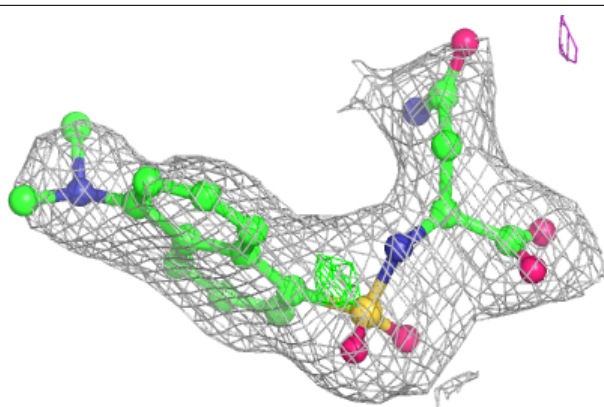
**Electron density around 9DN A 2001:**

$2mF_o-DF_c$  (at 0.7 rmsd) in gray  
 $mF_o-DF_c$  (at 3 rmsd) in purple (negative)  
and green (positive)

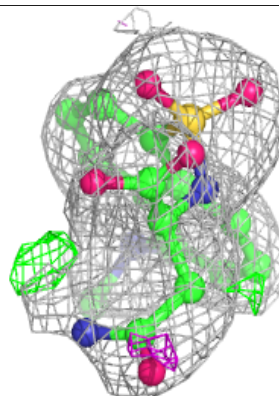
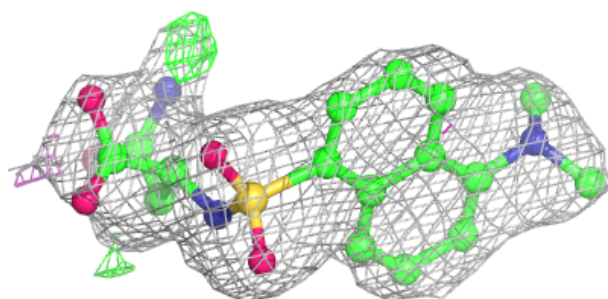
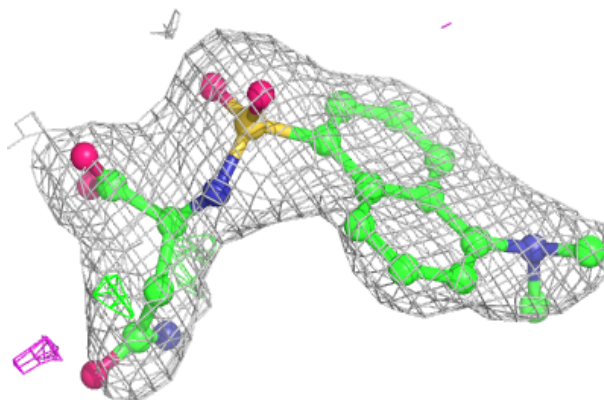


**Electron density around 9DN B 2002:**

$2mF_o-DF_c$  (at 0.7 rmsd) in gray  
 $mF_o-DF_c$  (at 3 rmsd) in purple (negative)  
and green (positive)

**Electron density around 9DN A 2002:**

$2mF_o-DF_c$  (at 0.7 rmsd) in gray  
 $mF_o-DF_c$  (at 3 rmsd) in purple (negative)  
and green (positive)



## 6.5 Other polymers [i](#)

There are no such residues in this entry.