



wwPDB NMR Structure Validation Summary Report ⓘ

Jun 3, 2020 – 03:45 pm BST

PDB ID : 2KX8
Title : NMR structure of stem-loop 4 from the human 7SK snRNA in complex with arginine
Authors : Durney, M.A.; D'Souza, V.M.
Deposited on : 2010-04-27

This is a wwPDB NMR Structure Validation Summary Report for a publicly released PDB entry.

We welcome your comments at validation@mail.wwpdb.org

A user guide is available at

<https://www.wwpdb.org/validation/2017/NMRValidationReportHelp>

with specific help available everywhere you see the ⓘ symbol.

The following versions of software and data (see [references ⓘ](#)) were used in the production of this report:

Cyrange : Kirchner and Güntert (2011)
NmrClust : Kelley et al. (1996)
MolProbity : 4.02b-467
Percentile statistics : 20191225.v01 (using entries in the PDB archive December 25th 2019)
RCI : v_1n_11_5_13_A (Berjanski et al., 2005)
PANAV : Wang et al. (2010)
ShiftChecker : 2.11
Ideal geometry (proteins) : Engh & Huber (2001)
Ideal geometry (DNA, RNA) : Parkinson et al. (1996)
Validation Pipeline (wwPDB-VP) : 2.11

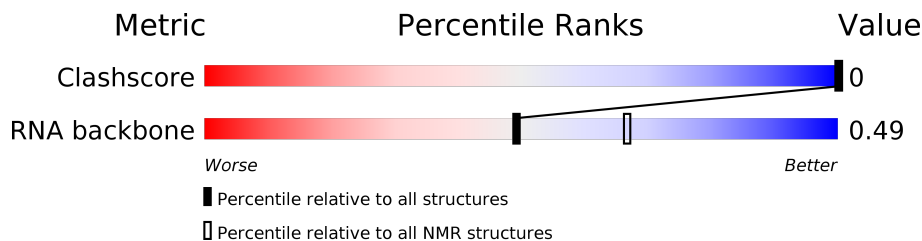
1 Overall quality at a glance

The following experimental techniques were used to determine the structure:

SOLUTION NMR

The overall completeness of chemical shifts assignment was not calculated.

Percentile scores (ranging between 0-100) for global validation metrics of the entry are shown in the following graphic. The table shows the number of entries on which the scores are based.



| Metric | Whole archive (#Entries) | NMR archive (#Entries) |
|--------------|-----------------------------|---------------------------|
| Clashscore | 158937 | 12864 |
| RNA backbone | 4643 | 676 |

The table below summarises the geometric issues observed across the polymeric chains and their fit to the experimental data. The red, orange, yellow and green segments indicate the fraction of residues that contain outliers for ≥ 3 , 2, 1 and 0 types of geometric quality criteria. A cyan segment indicates the fraction of residues that are not part of the well-defined cores, and a grey segment represents the fraction of residues that are not modelled. The numeric value for each fraction is indicated below the corresponding segment, with a dot representing fractions $\leq 5\%$

| Mol | Chain | Length | Quality of chain |
|-----|-------|--------|------------------|
| 1 | A | 42 | |

2 Ensemble composition and analysis

This entry contains 10 models. This entry does not contain polypeptide chains, therefore identification of well-defined residues and clustering analysis are not possible. All residues are included in the validation scores.

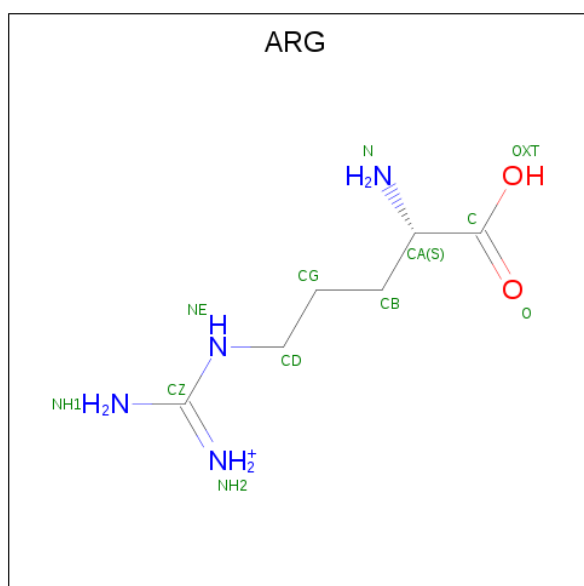
3 Entry composition [i](#)

There are 2 unique types of molecules in this entry. The entry contains 1362 atoms, of which 463 are hydrogens and 0 are deuteriums.

- Molecule 1 is a RNA chain called 7SK.

| Mol | Chain | Residues | Atoms | | | | | Trace | |
|-----|-------|----------|-------|-----|-----|-----|-----|-------|---|
| | | | Total | C | H | N | O | | P |
| 1 | A | 42 | 1338 | 397 | 450 | 152 | 298 | 41 | 0 |

- Molecule 2 is ARGinine (three-letter code: ARG) (formula: C₆H₁₅N₄O₂).



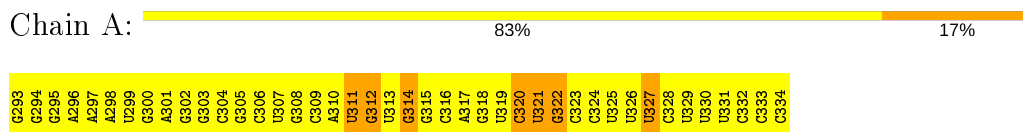
| Mol | Chain | Residues | Atoms | | | | |
|-----|-------|----------|-------|---|----|---|---|
| | | | Total | C | H | N | O |
| 2 | A | 1 | 24 | 6 | 13 | 4 | 1 |

4 Residue-property plots

4.1 Average score per residue in the NMR ensemble

These plots are provided for all protein, RNA and DNA chains in the entry. The first graphic is the same as shown in the summary in section 1 of this report. The second graphic shows the sequence where residues are colour-coded according to the number of geometric quality criteria for which they contain at least one outlier: green = 0, yellow = 1, orange = 2 and red = 3 or more. Stretches of 2 or more consecutive residues without any outliers are shown as green connectors. Residues which are classified as ill-defined in the NMR ensemble, are shown in cyan with an underline colour-coded according to the previous scheme. Residues which were present in the experimental sample, but not modelled in the final structure are shown in grey.

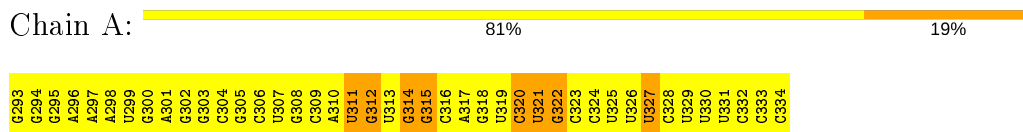
- Molecule 1: 7SK



4.2 Residue scores for the representative (author defined) model from the NMR ensemble

The representative model is number 1. Colouring as in section 4.1 above.

- Molecule 1: 7SK



5 Refinement protocol and experimental data overview [i](#)

The models were refined using the following method: *torsion angle dynamics*.

Of the 200 calculated structures, 10 were deposited, based on the following criterion: *structures with the least restraint violations*.

The following table shows the software used for structure solution, optimisation and refinement.

| Software name | Classification | Version |
|---------------|--------------------|---------|
| CYANA | structure solution | |
| CYANA | refinement | |

No chemical shift data was provided. No validations of the models with respect to experimental NMR restraints is performed at this time.

COVALENT-GEOMETRY INFOmissingINFO

5.1 Too-close contacts [i](#)

In the following table, the Non-H and H(model) columns list the number of non-hydrogen atoms and hydrogen atoms in each chain respectively. The H(added) column lists the number of hydrogen atoms added and optimized by MolProbity. The Clashes column lists the number of clashes averaged over the ensemble.

| Mol | Chain | Non-H | H(model) | H(added) | Clashes |
|-----|-------|-------|----------|----------|---------|
| All | All | 8990 | 4630 | 4640 | - |

The all-atom clashscore is defined as the number of clashes found per 1000 atoms (including hydrogen atoms). The all-atom clashscore for this structure is -.

There are no clashes.

5.2 Torsion angles [i](#)

5.2.1 Protein backbone [i](#)

There are no protein molecules in this entry.

5.2.2 Protein sidechains [i](#)

There are no protein molecules in this entry.

5.2.3 RNA

| Mol | Chain | Analysed | Backbone Outliers | Pucker Outliers | Suiteness |
|-----|-------|---------------|-------------------|-----------------|-----------|
| 1 | A | 41/42 (98%) | 8±1 (19±2%) | 1±0 (3±1%) | 0.49±0.01 |
| All | All | 410/420 (98%) | 76 (19%) | 13 (3%) | 0.49 |

The overall RNA backbone suiteness is 0.49.

5 of 9 unique RNA backbone outliers are listed below:

| Mol | Chain | Res | Type | Models (Total) |
|-----|-------|-----|------|----------------|
| 1 | A | 320 | C | 10 |
| 1 | A | 327 | U | 10 |
| 1 | A | 322 | G | 10 |
| 1 | A | 312 | G | 10 |
| 1 | A | 314 | G | 10 |

All unique RNA pucker outliers are listed below:

| Mol | Chain | Res | Type | Models (Total) |
|-----|-------|-----|------|----------------|
| 1 | A | 321 | U | 10 |
| 1 | A | 313 | U | 3 |

5.3 Non-standard residues in protein, DNA, RNA chains [i](#)

There are no non-standard protein/DNA/RNA residues in this entry.

5.4 Carbohydrates [i](#)

There are no carbohydrates in this entry.

5.5 Ligand geometry [i](#)

1 ligand is modelled in this entry.

There are no bond-length outliers.

There are no bond-angle outliers.

There are no chirality outliers.

There are no torsion outliers.

There are no ring outliers.

5.6 Other polymers [i](#)

There are no such molecules in this entry.

5.7 Polymer linkage issues [i](#)

There are no chain breaks in this entry.

6 Chemical shift validation

No chemical shift data were provided