



Full wwPDB X-ray Structure Validation Report ⓘ

Oct 11, 2021 – 06:03 PM EDT

PDB ID : 2IH1
Title : Ion selectivity in a semi-synthetic K⁺ channel locked in the conductive conformation
Authors : Valiyaveetil, F.I.; Leonetti, M.; Muir, T.W.; MacKinnon, R.
Deposited on : 2006-09-25
Resolution : 2.40 Å (reported)

This is a Full wwPDB X-ray Structure Validation Report for a publicly released PDB entry.

We welcome your comments at validation@mail.wwpdb.org

A user guide is available at

<https://www.wwpdb.org/validation/2017/XrayValidationReportHelp>

with specific help available everywhere you see the ⓘ symbol.

The following versions of software and data (see [references ⓘ](#)) were used in the production of this report:

MolProbity : 4.02b-467
Mogul : 1.8.5 (274361), CSD as541be (2020)
Xtrriage (Phenix) : 1.13
EDS : 2.23.2
buster-report : 1.1.7 (2018)
Percentile statistics : 20191225.v01 (using entries in the PDB archive December 25th 2019)
Refmac : 5.8.0158
CCP4 : 7.0.044 (Gargrove)
Ideal geometry (proteins) : Engh & Huber (2001)
Ideal geometry (DNA, RNA) : Parkinson et al. (1996)
Validation Pipeline (wwPDB-VP) : 2.23.2

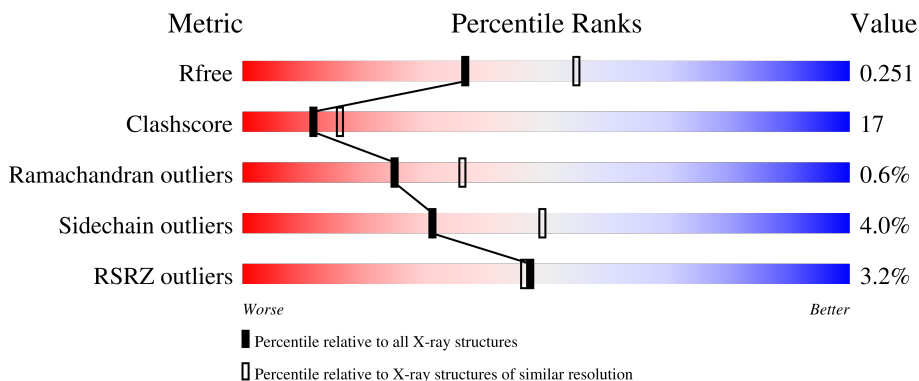
1 Overall quality at a glance

The following experimental techniques were used to determine the structure:

X-RAY DIFFRACTION

The reported resolution of this entry is 2.40 Å.

Percentile scores (ranging between 0-100) for global validation metrics of the entry are shown in the following graphic. The table shows the number of entries on which the scores are based.



Metric	Whole archive (#Entries)	Similar resolution (#Entries, resolution range(Å))
R_{free}	130704	3907 (2.40-2.40)
Clashscore	141614	4398 (2.40-2.40)
Ramachandran outliers	138981	4318 (2.40-2.40)
Sidechain outliers	138945	4319 (2.40-2.40)
RSRZ outliers	127900	3811 (2.40-2.40)

The table below summarises the geometric issues observed across the polymeric chains and their fit to the electron density. The red, orange, yellow and green segments of the lower bar indicate the fraction of residues that contain outliers for ≥ 3 , 2, 1 and 0 types of geometric quality criteria respectively. A grey segment represents the fraction of residues that are not modelled. The numeric value for each fraction is indicated below the corresponding segment, with a dot representing fractions $\leq 5\%$. The upper red bar (where present) indicates the fraction of residues that have poor fit to the electron density. The numeric value is given above the bar.

Mol	Chain	Length	Quality of chain
1	A	219	
2	B	212	
3	C	122	

The following table lists non-polymeric compounds, carbohydrate monomers and non-standard residues in protein, DNA, RNA chains that are outliers for geometric or electron-density-fit criteria:

Mol	Type	Chain	Res	Chirality	Geometry	Clashes	Electron density
5	1EM	C	301	-	-	-	X

2 Entry composition [i](#)

There are 6 unique types of molecules in this entry. The entry contains 4146 atoms, of which 0 are hydrogens and 0 are deuteriums.

In the tables below, the ZeroOcc column contains the number of atoms modelled with zero occupancy, the AltConf column contains the number of residues with at least one atom in alternate conformation and the Trace column contains the number of residues modelled with at most 2 atoms.

- Molecule 1 is a protein called FAB Heavy Chain.

Mol	Chain	Residues	Atoms					ZeroOcc	AltConf	Trace
			Total	C	N	O	S			
1	A	219	1648	1042	275	325	6	0	0	0

- Molecule 2 is a protein called FAB Light Chain.

Mol	Chain	Residues	Atoms					ZeroOcc	AltConf	Trace
			Total	C	N	O	S			
2	B	212	1649	1023	283	338	5	0	0	0

- Molecule 3 is a protein called Voltage-gated potassium channel.

Mol	Chain	Residues	Atoms					ZeroOcc	AltConf	Trace
			Total	C	N	O	S			
3	C	101	764	501	131	130	2	0	0	0

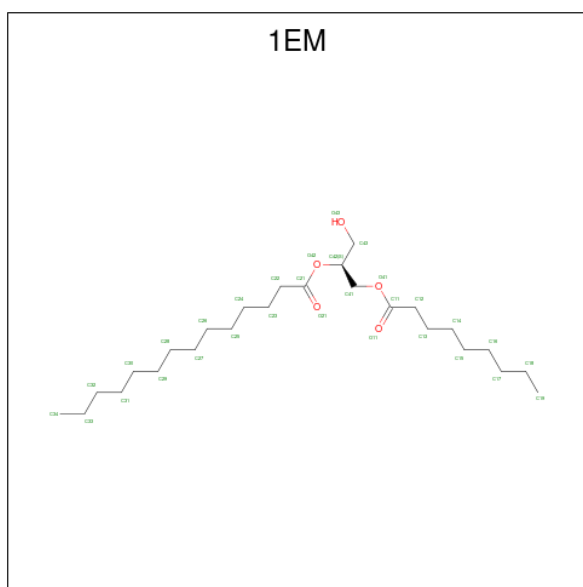
There are 5 discrepancies between the modelled and reference sequences:

Chain	Residue	Modelled	Actual	Comment	Reference
C	1	MET	-	cloning artifact	UNP P0A334
C	2	ALA	-	cloning artifact	UNP P0A334
C	69	ALA	SER	engineered mutation	UNP P0A334
C	70	CYS	VAL	engineered mutation	UNP P0A334
C	77	DAL	GLY	modified residue	UNP P0A334

- Molecule 4 is POTASSIUM ION (three-letter code: K) (formula: K).

Mol	Chain	Residues	Atoms		ZeroOcc	AltConf
4	C	5	Total	K	0	0
			5	5		

- Molecule 5 is (1S)-2-HYDROXY-1-[(NONANOYLOXY)METHYL]ETHYL MYRISTATE (three-letter code: 1EM) (formula: C₂₆H₅₀O₅).



Mol	Chain	Residues	Atoms		ZeroOcc	AltConf
5	C	1	Total	C O	0	0
			31	26 5		

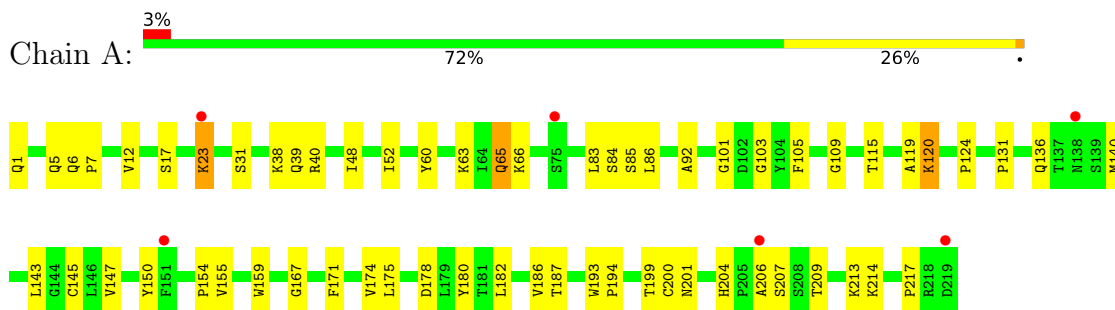
- Molecule 6 is water.

Mol	Chain	Residues	Atoms		ZeroOcc	AltConf
6	A	15	Total	O	0	0
			15	15		
6	B	25	Total	O	0	0
			25	25		
6	C	9	Total	O	0	0
			9	9		

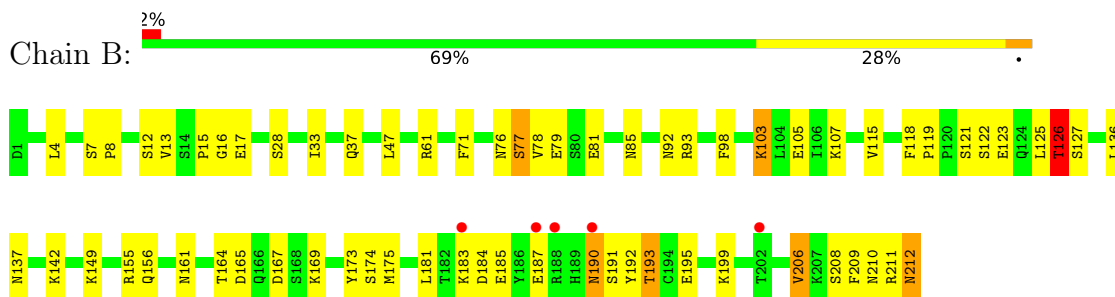
3 Residue-property plots [i](#)

These plots are drawn for all protein, RNA, DNA and oligosaccharide chains in the entry. The first graphic for a chain summarises the proportions of the various outlier classes displayed in the second graphic. The second graphic shows the sequence view annotated by issues in geometry and electron density. Residues are color-coded according to the number of geometric quality criteria for which they contain at least one outlier: green = 0, yellow = 1, orange = 2 and red = 3 or more. A red dot above a residue indicates a poor fit to the electron density ($RSRZ > 2$). Stretches of 2 or more consecutive residues without any outlier are shown as a green connector. Residues present in the sample, but not in the model, are shown in grey.

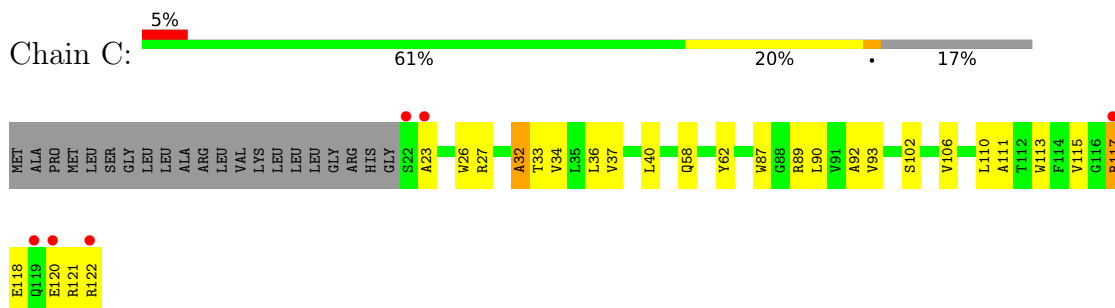
- Molecule 1: FAB Heavy Chain



- Molecule 2: FAB Light Chain



- Molecule 3: Voltage-gated potassium channel



4 Data and refinement statistics i

Property	Value	Source
Space group	I 4	Depositor
Cell constants a, b, c, α , β , γ	156.39Å 156.39Å 75.67Å 90.00° 90.00° 90.00°	Depositor
Resolution (Å)	31.23 – 2.40 31.22 – 2.40	Depositor EDS
% Data completeness (in resolution range)	95.5 (31.23-2.40) 95.6 (31.22-2.40)	Depositor EDS
R_{merge}	(Not available)	Depositor
R_{sym}	0.06	Depositor
$\langle I/\sigma(I) \rangle$ ¹	2.18 (at 2.39Å)	Xtrriage
Refinement program	CNS 1.1	Depositor
R, R_{free}	0.233 , 0.251 0.230 , 0.251	Depositor DCC
R_{free} test set	1710 reflections (4.99%)	wwPDB-VP
Wilson B-factor (Å ²)	48.9	Xtrriage
Anisotropy	0.258	Xtrriage
Bulk solvent k_{sol} (e/Å ³), B_{sol} (Å ²)	0.34 , 42.1	EDS
L-test for twinning ²	$\langle L \rangle = 0.50$, $\langle L^2 \rangle = 0.34$	Xtrriage
Estimated twinning fraction	0.017 for -k,-h,-l	Xtrriage
F_o, F_c correlation	0.94	EDS
Total number of atoms	4146	wwPDB-VP
Average B, all atoms (Å ²)	55.0	wwPDB-VP

Xtrriage's analysis on translational NCS is as follows: *The largest off-origin peak in the Patterson function is 3.14% of the height of the origin peak. No significant pseudotranslation is detected.*

¹Intensities estimated from amplitudes.

²Theoretical values of $\langle |L| \rangle$, $\langle L^2 \rangle$ for acentric reflections are 0.5, 0.333 respectively for untwinned datasets, and 0.375, 0.2 for perfectly twinned datasets.

5 Model quality [i](#)

5.1 Standard geometry [i](#)

Bond lengths and bond angles in the following residue types are not validated in this section: K, DAL, 1EM

The Z score for a bond length (or angle) is the number of standard deviations the observed value is removed from the expected value. A bond length (or angle) with $|Z| > 5$ is considered an outlier worth inspection. RMSZ is the root-mean-square of all Z scores of the bond lengths (or angles).

Mol	Chain	Bond lengths		Bond angles	
		RMSZ	# $ Z > 5$	RMSZ	# $ Z > 5$
1	A	0.41	0/1692	0.64	1/2312 (0.0%)
2	B	0.42	0/1686	0.63	0/2287
3	C	0.59	1/777 (0.1%)	1.08	3/1065 (0.3%)
All	All	0.45	1/4155 (0.0%)	0.74	4/5664 (0.1%)

Chiral center outliers are detected by calculating the chiral volume of a chiral center and verifying if the center is modelled as a planar moiety or with the opposite hand. A planarity outlier is detected by checking planarity of atoms in a peptide group, atoms in a mainchain group or atoms of a sidechain that are expected to be planar.

Mol	Chain	#Chirality outliers	#Planarity outliers
3	C	0	2

All (1) bond length outliers are listed below:

Mol	Chain	Res	Type	Atoms	Z	Observed(Å)	Ideal(Å)
3	C	32	ALA	C-N	8.96	1.54	1.34

All (4) bond angle outliers are listed below:

Mol	Chain	Res	Type	Atoms	Z	Observed(°)	Ideal(°)
3	C	32	ALA	O-C-N	-28.09	77.75	122.70
3	C	32	ALA	CA-C-N	-6.75	102.35	117.20
3	C	32	ALA	C-N-CA	5.44	135.29	121.70
1	A	103	GLY	N-CA-C	5.22	126.15	113.10

There are no chirality outliers.

All (2) planarity outliers are listed below:

Mol	Chain	Res	Type	Group
3	C	32	ALA	Peptide,Mainchain

5.2 Too-close contacts [i](#)

In the following table, the Non-H and H(model) columns list the number of non-hydrogen atoms and hydrogen atoms in the chain respectively. The H(added) column lists the number of hydrogen atoms added and optimized by MolProbity. The Clashes column lists the number of clashes within the asymmetric unit, whereas Symm-Clashes lists symmetry-related clashes.

Mol	Chain	Non-H	H(model)	H(added)	Clashes	Symm-Clashes
1	A	1648	0	1618	49	0
2	B	1649	0	1576	61	0
3	C	764	0	782	39	0
4	C	5	0	0	0	0
5	C	31	0	50	13	2
6	A	15	0	0	3	0
6	B	25	0	0	7	2
6	C	9	0	0	7	0
All	All	4146	0	4026	142	2

The all-atom clashscore is defined as the number of clashes found per 1000 atoms (including hydrogen atoms). The all-atom clashscore for this structure is 17.

All (142) close contacts within the same asymmetric unit are listed below, sorted by their clash magnitude.

Atom-1	Atom-2	Interatomic distance (Å)	Clash overlap (Å)
1:A:120:LYS:H	1:A:120:LYS:HE3	1.22	1.04
3:C:34:VAL:HA	6:C:308:HOH:O	1.59	1.02
3:C:89:ARG:NH1	5:C:301:1EM:H122	1.76	1.00
3:C:89:ARG:HH11	5:C:301:1EM:C12	1.82	0.92
3:C:89:ARG:HH11	5:C:301:1EM:H122	1.34	0.91
2:B:149:LYS:HB2	2:B:193:THR:HG23	1.60	0.82
1:A:65:GLN:NE2	1:A:65:GLN:H	1.76	0.82
3:C:89:ARG:HD2	5:C:301:1EM:H131	1.60	0.82
3:C:89:ARG:NH1	5:C:301:1EM:C12	2.44	0.79
2:B:183:LYS:O	2:B:187:GLU:HG2	1.83	0.78
3:C:89:ARG:CD	5:C:301:1EM:H131	2.12	0.78
2:B:122:SER:O	2:B:126:THR:HG23	1.84	0.78
3:C:87:TRP:CE3	3:C:90:LEU:HD12	2.22	0.75
2:B:193:THR:HB	2:B:208:SER:OG	1.89	0.72
1:A:63:LYS:O	1:A:63:LYS:HD3	1.91	0.70

Continued on next page...

Continued from previous page...

Atom-1	Atom-2	Interatomic distance (Å)	Clash overlap (Å)
2:B:8:PRO:HD2	6:B:229:HOH:O	1.93	0.69
2:B:13:VAL:CG2	2:B:17:GLU:HB3	2.24	0.67
3:C:113:TRP:O	3:C:117:ARG:HB2	1.94	0.67
1:A:38:LYS:HB2	1:A:48:ILE:HD11	1.77	0.66
3:C:89:ARG:HH11	5:C:301:1EM:C13	2.07	0.66
1:A:175:LEU:HB2	1:A:180:TYR:CE2	2.31	0.65
3:C:33:THR:O	6:C:308:HOH:O	2.15	0.65
1:A:124:PRO:HB3	1:A:150:TYR:HB3	1.78	0.64
2:B:7:SER:O	6:B:229:HOH:O	2.15	0.64
2:B:191:SER:HB3	2:B:210:ASN:ND2	2.13	0.63
2:B:122:SER:HA	2:B:125:LEU:HD12	1.81	0.63
3:C:93:VAL:HG21	5:C:301:1EM:H192	1.80	0.61
3:C:117:ARG:O	3:C:120:GLU:HG3	2.01	0.61
2:B:167:ASP:OD2	2:B:169:LYS:HB2	2.00	0.61
3:C:34:VAL:CA	6:C:308:HOH:O	2.30	0.61
2:B:16:GLY:O	2:B:77:SER:HA	2.02	0.60
2:B:195:GLU:HG2	2:B:206:VAL:CG1	2.32	0.60
1:A:1:GLN:N	1:A:1:GLN:OE1	2.34	0.59
3:C:89:ARG:HH11	5:C:301:1EM:H131	1.68	0.59
1:A:120:LYS:HE3	1:A:120:LYS:N	2.05	0.59
2:B:149:LYS:HB2	2:B:193:THR:CG2	2.31	0.59
1:A:12:VAL:HG11	1:A:86:LEU:HD12	1.84	0.58
2:B:123:GLU:H	2:B:123:GLU:CD	2.07	0.58
1:A:124:PRO:HB2	1:A:147:VAL:HG13	1.86	0.58
1:A:65:GLN:H	1:A:65:GLN:HE21	1.52	0.57
2:B:37:GLN:HB2	2:B:47:LEU:HD11	1.85	0.57
2:B:193:THR:HG22	6:B:225:HOH:O	2.06	0.56
1:A:6:GLN:HE21	1:A:109:GLY:HA3	1.70	0.55
2:B:7:SER:C	6:B:229:HOH:O	2.44	0.55
2:B:61:ARG:HG3	2:B:76:ASN:O	2.07	0.54
2:B:15:PRO:HD3	2:B:107:LYS:O	2.07	0.54
1:A:131:PRO:HD3	1:A:143:LEU:CD2	2.37	0.54
2:B:121:SER:O	2:B:125:LEU:HG	2.08	0.54
3:C:89:ARG:HD3	5:C:301:1EM:H131	1.89	0.54
1:A:83:LEU:HB3	1:A:86:LEU:HD21	1.90	0.54
3:C:33:THR:C	6:C:308:HOH:O	2.46	0.53
2:B:28:SER:OG	6:B:235:HOH:O	2.18	0.53
1:A:217:PRO:HA	6:A:228:HOH:O	2.08	0.53
3:C:89:ARG:NH1	5:C:301:1EM:O11	2.42	0.53
2:B:136:LEU:HD22	2:B:136:LEU:N	2.24	0.53
3:C:37:VAL:HG23	6:C:308:HOH:O	2.08	0.53

Continued on next page...

Continued from previous page...

Atom-1	Atom-2	Interatomic distance (Å)	Clash overlap (Å)
1:A:105:PHE:HE1	2:B:98:PHE:HZ	1.56	0.52
2:B:115:VAL:HG22	2:B:136:LEU:CD1	2.40	0.52
3:C:23:ALA:O	3:C:27:ARG:HG3	2.09	0.52
2:B:195:GLU:HG2	2:B:206:VAL:HG12	1.91	0.51
1:A:155:VAL:HG12	1:A:204:HIS:HD2	1.76	0.51
2:B:85:ASN:ND2	2:B:103:LYS:HE2	2.26	0.51
2:B:136:LEU:HB2	2:B:175:MET:HG2	1.94	0.50
1:A:174:VAL:O	1:A:174:VAL:HG23	2.12	0.50
2:B:184:ASP:O	2:B:187:GLU:N	2.44	0.50
1:A:17:SER:HB2	1:A:84:SER:HA	1.93	0.50
2:B:183:LYS:HB3	2:B:183:LYS:NZ	2.27	0.50
1:A:7:PRO:HD3	1:A:23:LYS:HZ1	1.77	0.49
2:B:142:LYS:HD3	2:B:173:TYR:CE2	2.47	0.49
1:A:140:MET:HE3	1:A:187:THR:HG22	1.93	0.49
3:C:37:VAL:CG2	6:C:308:HOH:O	2.60	0.49
3:C:118:GLU:HG3	3:C:122:ARG:HD3	1.94	0.49
1:A:65:GLN:H	1:A:65:GLN:CD	2.09	0.49
1:A:105:PHE:HE1	2:B:98:PHE:CZ	2.31	0.49
1:A:145:CYS:CB	1:A:200:CYS:HG	2.25	0.48
2:B:149:LYS:HD2	2:B:195:GLU:OE2	2.13	0.48
1:A:182:LEU:C	1:A:182:LEU:HD12	2.33	0.48
2:B:142:LYS:HB3	2:B:173:TYR:CG	2.48	0.48
3:C:102:SER:O	3:C:106:VAL:HG23	2.14	0.48
1:A:39:GLN:O	1:A:92:ALA:HB1	2.14	0.48
2:B:125:LEU:C	2:B:127:SER:H	2.16	0.48
1:A:145:CYS:SG	1:A:200:CYS:SG	3.11	0.48
1:A:199:THR:HG23	1:A:213:LYS:C	2.33	0.47
2:B:12:SER:HA	2:B:105:GLU:O	2.14	0.47
2:B:155:ARG:HD2	2:B:156:GLN:H	1.80	0.47
1:A:5:GLN:O	1:A:23:LYS:HG2	2.15	0.46
1:A:52:ILE:O	1:A:52:ILE:HG23	2.15	0.46
3:C:120:GLU:C	3:C:122:ARG:H	2.19	0.46
3:C:87:TRP:CZ3	3:C:90:LEU:HD12	2.49	0.46
3:C:26:TRP:HA	3:C:26:TRP:CE3	2.49	0.46
3:C:36:LEU:O	3:C:40:LEU:HG	2.15	0.46
3:C:89:ARG:NH1	5:C:301:1EM:C11	2.78	0.46
2:B:155:ARG:HH12	2:B:181:LEU:HD21	1.80	0.46
2:B:211:ARG:HH11	2:B:211:ARG:HG2	1.82	0.45
1:A:31:SER:HB2	3:C:62:TYR:CE1	2.52	0.45
2:B:190:ASN:HD21	2:B:210:ASN:HB3	1.81	0.45
3:C:89:ARG:HH12	5:C:301:1EM:H122	1.72	0.45

Continued on next page...

Continued from previous page...

Atom-1	Atom-2	Interatomic distance (Å)	Clash overlap (Å)
1:A:159:TRP:CH2	1:A:200:CYS:HB3	2.52	0.45
2:B:155:ARG:NH1	2:B:181:LEU:HD21	2.32	0.45
1:A:84:SER:O	1:A:85:SER:C	2.56	0.45
2:B:199:LYS:HB2	6:B:237:HOH:O	2.17	0.45
1:A:207:SER:O	1:A:209:THR:HG23	2.17	0.44
2:B:12:SER:HB3	2:B:107:LYS:HE2	2.00	0.44
1:A:193:TRP:CD1	1:A:194:PRO:HA	2.53	0.44
1:A:40:ARG:HG2	1:A:92:ALA:HB2	1.98	0.44
1:A:101:GLY:HA3	3:C:62:TYR:CE1	2.53	0.44
2:B:118:PHE:HA	2:B:119:PRO:HD3	1.85	0.43
3:C:106:VAL:O	3:C:110:LEU:HG	2.18	0.43
1:A:204:HIS:CE1	1:A:206:ALA:HB3	2.53	0.43
2:B:199:LYS:CB	6:B:237:HOH:O	2.66	0.43
2:B:192:TYR:HB2	2:B:209:PHE:CE2	2.53	0.43
3:C:89:ARG:O	3:C:92:ALA:HB3	2.18	0.43
2:B:79:GLU:HG3	2:B:81:GLU:HG2	1.99	0.43
3:C:87:TRP:CZ3	3:C:90:LEU:CD1	3.02	0.43
2:B:161:ASN:HB3	2:B:175:MET:HE1	2.00	0.43
1:A:182:LEU:HA	6:A:232:HOH:O	2.18	0.43
2:B:76:ASN:O	2:B:77:SER:HB3	2.18	0.43
2:B:92:ASN:HD21	3:C:58:GLN:HE21	1.67	0.43
1:A:140:MET:CE	1:A:187:THR:HG22	2.49	0.43
1:A:124:PRO:CB	1:A:150:TYR:HB3	2.46	0.42
2:B:137:ASN:HD22	2:B:174:SER:HB3	1.84	0.42
2:B:92:ASN:ND2	2:B:93:ARG:HG3	2.34	0.42
2:B:115:VAL:HG22	2:B:136:LEU:HD13	2.00	0.42
3:C:120:GLU:C	3:C:122:ARG:N	2.73	0.42
1:A:120:LYS:H	1:A:120:LYS:CE	2.11	0.42
2:B:211:ARG:HG2	2:B:211:ARG:O	2.20	0.42
1:A:60:TYR:CD1	1:A:66:LYS:HE2	2.55	0.42
1:A:115:THR:OG1	6:A:229:HOH:O	2.22	0.41
1:A:159:TRP:CZ3	1:A:200:CYS:HB3	2.54	0.41
3:C:111:ALA:O	3:C:115:VAL:HG23	2.20	0.41
2:B:183:LYS:HG2	2:B:187:GLU:OE1	2.20	0.41
2:B:190:ASN:ND2	2:B:210:ASN:HB3	2.36	0.41
2:B:61:ARG:HD3	2:B:77:SER:O	2.20	0.41
2:B:212:ASN:C	2:B:212:ASN:HD22	2.23	0.41
3:C:58:GLN:HB2	6:C:304:HOH:O	2.20	0.41
1:A:23:LYS:HG2	1:A:23:LYS:H	1.57	0.41
1:A:101:GLY:HA3	3:C:62:TYR:CD1	2.56	0.41
1:A:171:PHE:CD1	2:B:164:THR:HG23	2.56	0.41

Continued on next page...

Continued from previous page...

Atom-1	Atom-2	Interatomic distance (Å)	Clash overlap (Å)
2:B:13:VAL:CG1	2:B:78:VAL:HG21	2.51	0.40
2:B:33:ILE:HG21	2:B:71:PHE:CD2	2.56	0.40
2:B:181:LEU:HD22	2:B:185:GLU:CG	2.51	0.40
1:A:167:GLY:O	1:A:186:VAL:HA	2.20	0.40

All (2) symmetry-related close contacts are listed below. The label for Atom-2 includes the symmetry operator and encoded unit-cell translations to be applied.

Atom-1	Atom-2	Interatomic distance (Å)	Clash overlap (Å)
5:C:301:1EM:C43	6:B:224:HOH:O[3_655]	1.35	0.85
5:C:301:1EM:O43	6:B:224:HOH:O[3_655]	1.94	0.26

5.3 Torsion angles [i](#)

5.3.1 Protein backbone [i](#)

In the following table, the Percentiles column shows the percent Ramachandran outliers of the chain as a percentile score with respect to all X-ray entries followed by that with respect to entries of similar resolution.

The Analysed column shows the number of residues for which the backbone conformation was analysed, and the total number of residues.

Mol	Chain	Analysed	Favoured	Allowed	Outliers	Percentiles	
1	A	217/219 (99%)	208 (96%)	8 (4%)	1 (0%)	29	41
2	B	210/212 (99%)	197 (94%)	12 (6%)	1 (0%)	29	41
3	C	98/122 (80%)	95 (97%)	2 (2%)	1 (1%)	15	23
All	All	525/553 (95%)	500 (95%)	22 (4%)	3 (1%)	25	36

All (3) Ramachandran outliers are listed below:

Mol	Chain	Res	Type
1	A	119	ALA
2	B	126	THR
3	C	121	ARG

5.3.2 Protein sidechains [i](#)

In the following table, the Percentiles column shows the percent sidechain outliers of the chain as a percentile score with respect to all X-ray entries followed by that with respect to entries of similar resolution.

The Analysed column shows the number of residues for which the sidechain conformation was analysed, and the total number of residues.

Mol	Chain	Analysed	Rotameric	Outliers	Percentiles	
1	A	185/185 (100%)	177 (96%)	8 (4%)	29	46
2	B	190/190 (100%)	181 (95%)	9 (5%)	26	42
3	C	73/89 (82%)	72 (99%)	1 (1%)	67	82
All	All	448/464 (97%)	430 (96%)	18 (4%)	31	49

All (18) residues with a non-rotameric sidechain are listed below:

Mol	Chain	Res	Type
1	A	23	LYS
1	A	65	GLN
1	A	120	LYS
1	A	136	GLN
1	A	154	PRO
1	A	178	ASP
1	A	201	ASN
1	A	214	LYS
2	B	4	LEU
2	B	77	SER
2	B	103	LYS
2	B	126	THR
2	B	165	ASP
2	B	190	ASN
2	B	193	THR
2	B	206	VAL
2	B	212	ASN
3	C	117	ARG

Sometimes sidechains can be flipped to improve hydrogen bonding and reduce clashes. All (15) such sidechains are listed below:

Mol	Chain	Res	Type
1	A	3	GLN
1	A	5	GLN
1	A	6	GLN

Continued on next page...

Continued from previous page...

Mol	Chain	Res	Type
1	A	43	HIS
1	A	65	GLN
2	B	85	ASN
2	B	92	ASN
2	B	137	ASN
2	B	138	ASN
2	B	161	ASN
2	B	190	ASN
2	B	210	ASN
2	B	212	ASN
3	C	25	HIS
3	C	119	GLN

5.3.3 RNA [i](#)

There are no RNA molecules in this entry.

5.4 Non-standard residues in protein, DNA, RNA chains [i](#)

1 non-standard protein/DNA/RNA residue is modelled in this entry.

There are no bond length outliers.

There are no bond angle outliers.

There are no chirality outliers.

There are no torsion outliers.

There are no ring outliers.

No monomer is involved in short contacts.

5.5 Carbohydrates [i](#)

There are no monosaccharides in this entry.

5.6 Ligand geometry [i](#)

Of 6 ligands modelled in this entry, 5 are monoatomic - leaving 1 for Mogul analysis.

In the following table, the Counts columns list the number of bonds (or angles) for which Mogul statistics could be retrieved, the number of bonds (or angles) that are observed in the model and the number of bonds (or angles) that are defined in the Chemical Component Dictionary. The

Link column lists molecule types, if any, to which the group is linked. The Z score for a bond length (or angle) is the number of standard deviations the observed value is removed from the expected value. A bond length (or angle) with $|Z| > 2$ is considered an outlier worth inspection. RMSZ is the root-mean-square of all Z scores of the bond lengths (or angles).

Mol	Type	Chain	Res	Link	Bond lengths			Bond angles		
					Counts	RMSZ	# Z > 2	Counts	RMSZ	# Z > 2
5	1EM	C	301	-	30,30,30	1.18	3 (10%)	32,32,32	1.12	1 (3%)

In the following table, the Chirals column lists the number of chiral outliers, the number of chiral centers analysed, the number of these observed in the model and the number defined in the Chemical Component Dictionary. Similar counts are reported in the Torsion and Rings columns. '-' means no outliers of that kind were identified.

Mol	Type	Chain	Res	Link	Chirals	Torsions	Rings
5	1EM	C	301	-	-	11/32/32/32	-

All (3) bond length outliers are listed below:

Mol	Chain	Res	Type	Atoms	Z	Observed(Å)	Ideal(Å)
5	C	301	1EM	O41-C11	3.83	1.44	1.33
5	C	301	1EM	O42-C21	3.52	1.44	1.34
5	C	301	1EM	O41-C41	-2.32	1.39	1.45

All (1) bond angle outliers are listed below:

Mol	Chain	Res	Type	Atoms	Z	Observed(°)	Ideal(°)
5	C	301	1EM	O42-C21-C22	3.71	119.49	111.50

There are no chirality outliers.

All (11) torsion outliers are listed below:

Mol	Chain	Res	Type	Atoms
5	C	301	1EM	O21-C21-O42-C42
5	C	301	1EM	C22-C21-O42-C42
5	C	301	1EM	C23-C24-C25-C26
5	C	301	1EM	C21-C22-C23-C24
5	C	301	1EM	C24-C25-C26-C27
5	C	301	1EM	C26-C27-C28-C29
5	C	301	1EM	O41-C11-C12-C13
5	C	301	1EM	O41-C41-C42-O42
5	C	301	1EM	O11-C11-C12-C13
5	C	301	1EM	O42-C21-C22-C23

Continued on next page...

Continued from previous page...

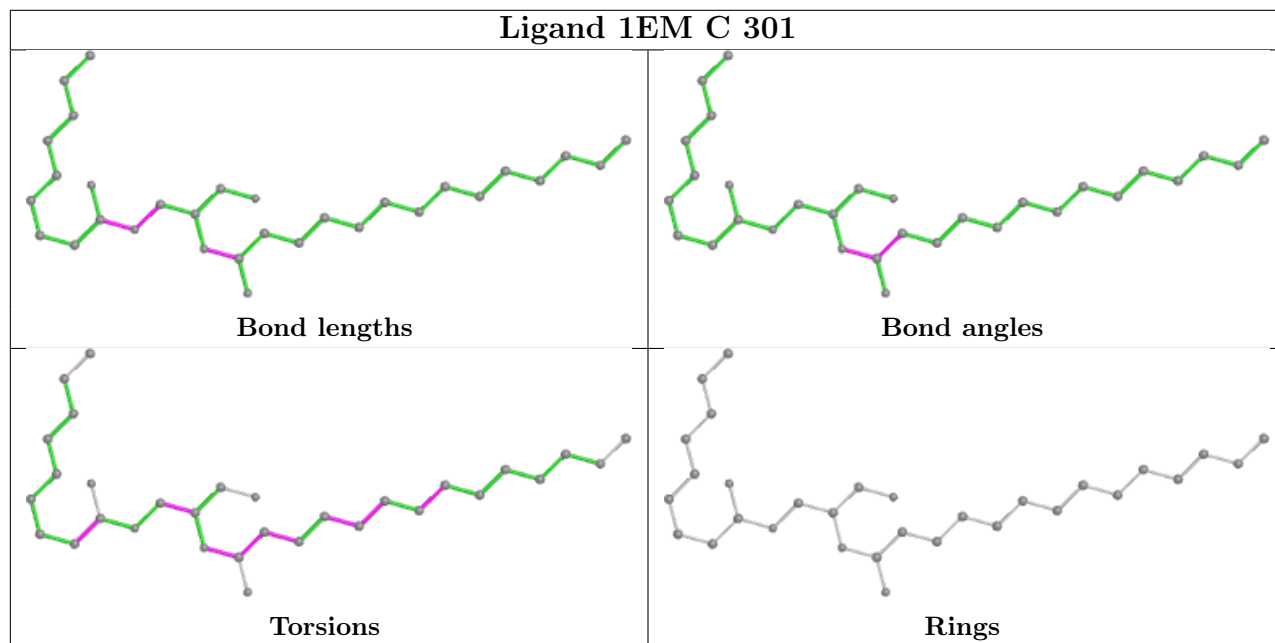
Mol	Chain	Res	Type	Atoms
5	C	301	1EM	O21-C21-C22-C23

There are no ring outliers.

1 monomer is involved in 15 short contacts:

Mol	Chain	Res	Type	Clashes	Symm-Clashes
5	C	301	1EM	13	2

The following is a two-dimensional graphical depiction of Mogul quality analysis of bond lengths, bond angles, torsion angles, and ring geometry for all instances of the Ligand of Interest. In addition, ligands with molecular weight > 250 and outliers as shown on the validation Tables will also be included. For torsion angles, if less than 5% of the Mogul distribution of torsion angles is within 10 degrees of the torsion angle in question, then that torsion angle is considered an outlier. Any bond that is central to one or more torsion angles identified as an outlier by Mogul will be highlighted in the graph. For rings, the root-mean-square deviation (RMSD) between the ring in question and similar rings identified by Mogul is calculated over all ring torsion angles. If the average RMSD is greater than 60 degrees and the minimal RMSD between the ring in question and any Mogul-identified rings is also greater than 60 degrees, then that ring is considered an outlier. The outliers are highlighted in purple. The color gray indicates Mogul did not find sufficient equivalents in the CSD to analyse the geometry.



5.7 Other polymers [\(i\)](#)

There are no such residues in this entry.

5.8 Polymer linkage issues

There are no chain breaks in this entry.

6 Fit of model and data [i](#)

6.1 Protein, DNA and RNA chains [i](#)

In the following table, the column labelled ‘#RSRZ > 2’ contains the number (and percentage) of RSRZ outliers, followed by percent RSRZ outliers for the chain as percentile scores relative to all X-ray entries and entries of similar resolution. The OWAB column contains the minimum, median, 95th percentile and maximum values of the occupancy-weighted average B-factor per residue. The column labelled ‘Q < 0.9’ lists the number of (and percentage) of residues with an average occupancy less than 0.9.

Mol	Chain	Analysed	<RSRZ>	#RSRZ>2	OWAB(Å ²)	Q<0.9
1	A	219/219 (100%)	0.26	6 (2%) 54 52	34, 59, 77, 95	0
2	B	212/212 (100%)	0.10	5 (2%) 59 57	27, 56, 81, 98	0
3	C	100/122 (81%)	0.15	6 (6%) 21 20	28, 37, 85, 105	0
All	All	531/553 (96%)	0.18	17 (3%) 47 46	27, 56, 80, 105	0

All (17) RSRZ outliers are listed below:

Mol	Chain	Res	Type	RSRZ
3	C	23	ALA	5.0
3	C	122	ARG	3.8
3	C	22	SER	3.1
1	A	219	ASP	2.9
1	A	75	SER	2.9
2	B	188	ARG	2.7
3	C	117	ARG	2.6
1	A	23	LYS	2.5
2	B	202	THR	2.4
2	B	190	ASN	2.4
1	A	138	ASN	2.4
3	C	119	GLN	2.3
2	B	183	LYS	2.2
2	B	187	GLU	2.2
1	A	206	ALA	2.1
3	C	120	GLU	2.1
1	A	151	PHE	2.0

6.2 Non-standard residues in protein, DNA, RNA chains [i](#)

In the following table, the Atoms column lists the number of modelled atoms in the group and the number defined in the chemical component dictionary. The B-factors column lists the minimum,

median, 95th percentile and maximum values of B factors of atoms in the group. The column labelled 'Q< 0.9' lists the number of atoms with occupancy less than 0.9.

Mol	Type	Chain	Res	Atoms	RSCC	RSR	B-factors(Å ²)	Q<0.9
3	DAL	C	77	5/6	0.97	0.21	33,34,35,35	0

6.3 Carbohydrates [i](#)

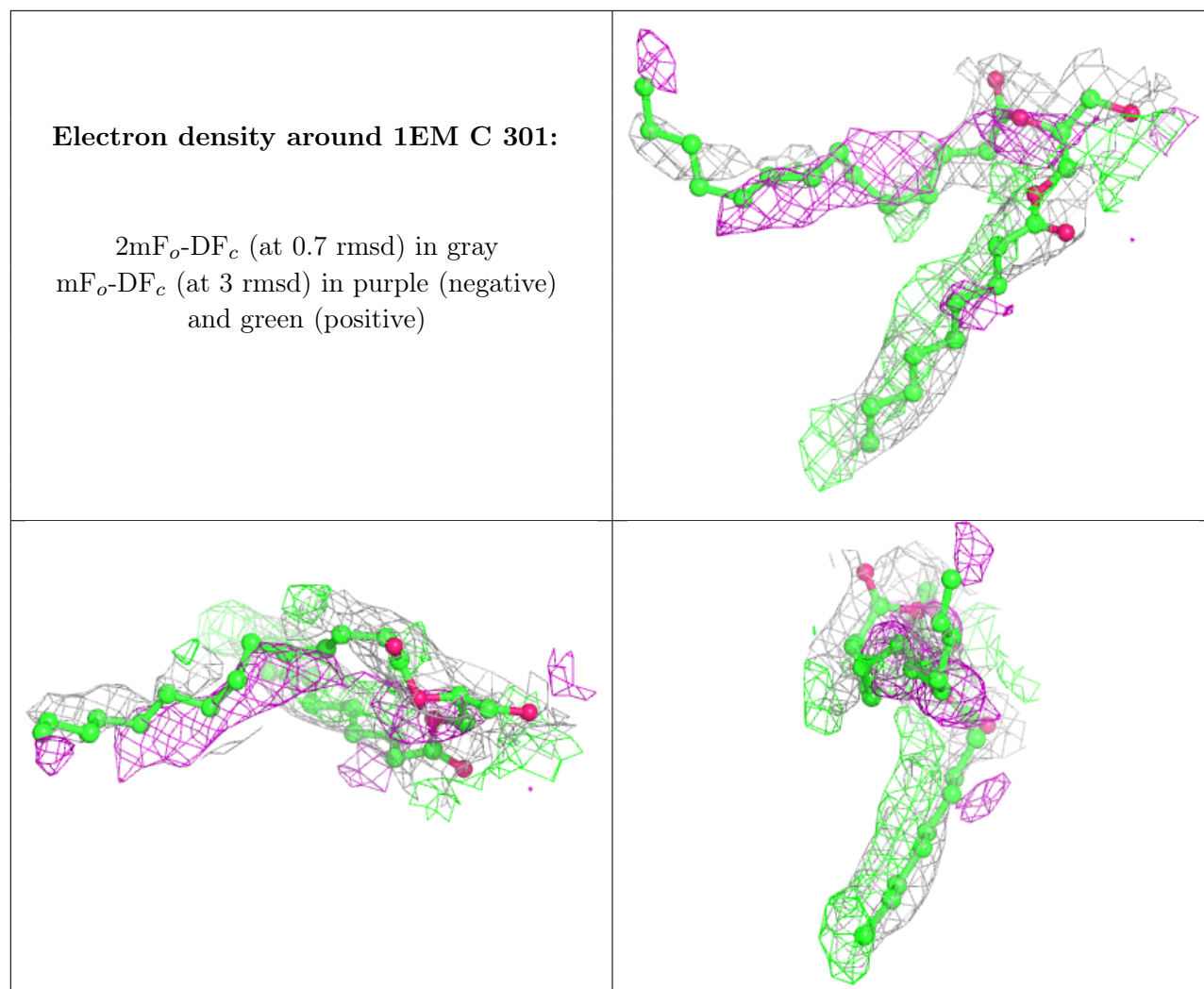
There are no monosaccharides in this entry.

6.4 Ligands [i](#)

In the following table, the Atoms column lists the number of modelled atoms in the group and the number defined in the chemical component dictionary. The B-factors column lists the minimum, median, 95th percentile and maximum values of B factors of atoms in the group. The column labelled 'Q< 0.9' lists the number of atoms with occupancy less than 0.9.

Mol	Type	Chain	Res	Atoms	RSCC	RSR	B-factors(Å ²)	Q<0.9
5	1EM	C	301	31/31	0.61	0.53	66,85,89,91	0
4	K	C	229	1/1	0.78	0.31	97,97,97,97	1
4	K	C	207	1/1	0.94	0.13	63,63,63,63	1
4	K	C	203	1/1	0.97	0.44	78,78,78,78	1
4	K	C	202	1/1	0.99	0.11	53,53,53,53	1
4	K	C	201	1/1	1.00	0.10	37,37,37,37	1

The following is a graphical depiction of the model fit to experimental electron density of all instances of the Ligand of Interest. In addition, ligands with molecular weight > 250 and outliers as shown on the geometry validation Tables will also be included. Each fit is shown from different orientation to approximate a three-dimensional view.



6.5 Other polymers [i](#)

There are no such residues in this entry.