



Full wwPDB X-ray Structure Validation Report ⓘ

Aug 20, 2023 – 03:10 PM EDT

PDB ID : 2I20
Title : Bacteriorhodopsin/lipid complex, M state of D96A mutant
Authors : Lanyi, J.K.; Schobert, B.
Deposited on : 2006-08-15
Resolution : 2.08 Å(reported)

This is a Full wwPDB X-ray Structure Validation Report for a publicly released PDB entry.

We welcome your comments at validation@mail.wwpdb.org

A user guide is available at

<https://www.wwpdb.org/validation/2017/XrayValidationReportHelp>

with specific help available everywhere you see the ⓘ symbol.

The types of validation reports are described at

<http://www.wwpdb.org/validation/2017/FAQs#types>.

The following versions of software and data (see [references ⓘ](#)) were used in the production of this report:

MolProbity : 4.02b-467
Mogul : 1.8.5 (274361), CSD as541be (2020)
Xtriage (Phenix) : 1.13
EDS : 2.35
buster-report : 1.1.7 (2018)
Percentile statistics : 20191225.v01 (using entries in the PDB archive December 25th 2019)
Refmac : 5.8.0158
CCP4 : 7.0.044 (Gargrove)
Ideal geometry (proteins) : Engh & Huber (2001)
Ideal geometry (DNA, RNA) : Parkinson et al. (1996)
Validation Pipeline (wwPDB-VP) : 2.35

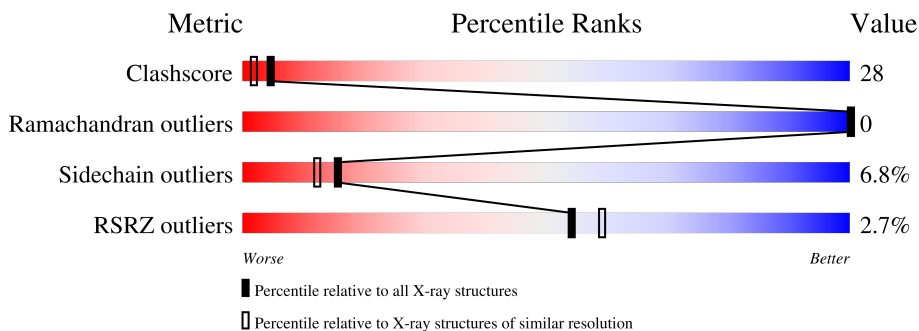
1 Overall quality at a glance

The following experimental techniques were used to determine the structure:

X-RAY DIFFRACTION

The reported resolution of this entry is 2.08 Å.

Percentile scores (ranging between 0-100) for global validation metrics of the entry are shown in the following graphic. The table shows the number of entries on which the scores are based.



Metric	Whole archive (#Entries)	Similar resolution (#Entries, resolution range(Å))
Clashscore	141614	6738 (2.10-2.06)
Ramachandran outliers	138981	6663 (2.10-2.06)
Sidechain outliers	138945	6664 (2.10-2.06)
RSRZ outliers	127900	6057 (2.10-2.06)

The table below summarises the geometric issues observed across the polymeric chains and their fit to the electron density. The red, orange, yellow and green segments of the lower bar indicate the fraction of residues that contain outliers for ≥ 3 , 2, 1 and 0 types of geometric quality criteria respectively. A grey segment represents the fraction of residues that are not modelled. The numeric value for each fraction is indicated below the corresponding segment, with a dot representing fractions $\leq 5\%$. The upper red bar (where present) indicates the fraction of residues that have poor fit to the electron density. The numeric value is given above the bar.

Mol	Chain	Length	Quality of chain
1	A	249	

The following table lists non-polymeric compounds, carbohydrate monomers and non-standard residues in protein, DNA, RNA chains that are outliers for geometric or electron-density-fit criteria:

Mol	Type	Chain	Res	Chirality	Geometry	Clashes	Electron density
3	LI1	A	601	X	-	-	-
3	LI1	A	602	X	-	X	-
3	LI1	A	610	-	-	X	-

Continued on next page...

Continued from previous page...

Mol	Type	Chain	Res	Chirality	Geometry	Clashes	Electron density
3	LI1	A	611	X	-	-	-
3	LI1	A	613	X	-	-	-
4	SQU	A	701	-	X	-	-

2 Entry composition [i](#)

There are 5 unique types of molecules in this entry. The entry contains 2067 atoms, of which 0 are hydrogens and 0 are deuteriums.

In the tables below, the ZeroOcc column contains the number of atoms modelled with zero occupancy, the AltConf column contains the number of residues with at least one atom in alternate conformation and the Trace column contains the number of residues modelled with at most 2 atoms.

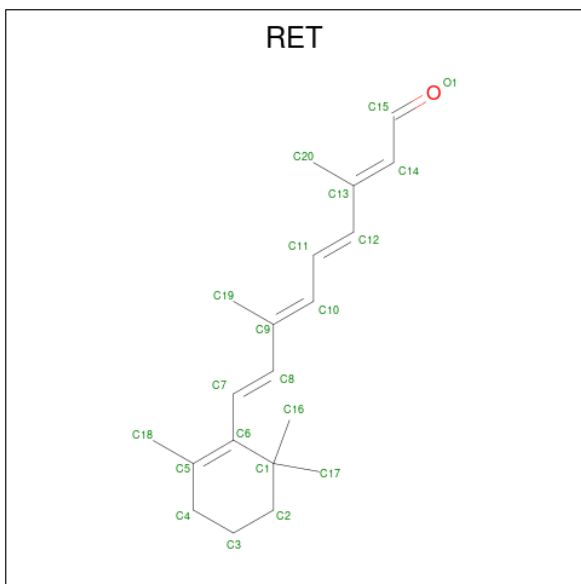
- Molecule 1 is a protein called Bacteriorhodopsin.

Mol	Chain	Residues	Atoms					ZeroOcc	AltConf	Trace
			Total	C	N	O	S			
1	A	222	1717	1158	262	288	9	0	0	0

There is a discrepancy between the modelled and reference sequences:

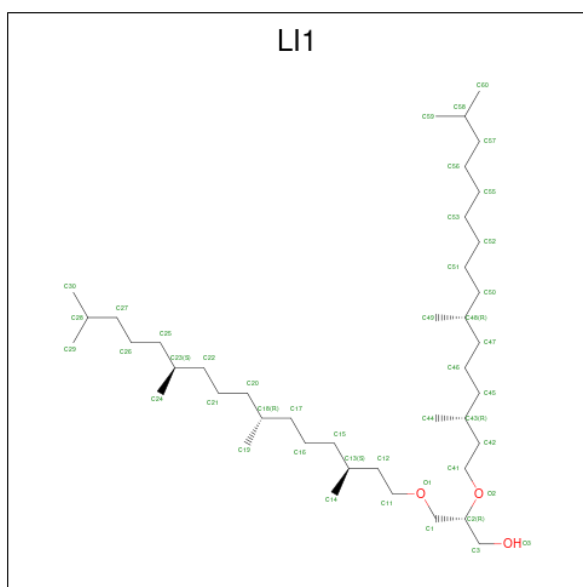
Chain	Residue	Modelled	Actual	Comment	Reference
A	96	ALA	ASP	engineered mutation	UNP P02945

- Molecule 2 is RETINAL (three-letter code: RET) (formula: C₂₀H₂₈O).



Mol	Chain	Residues	Atoms		ZeroOcc	AltConf
			Total	C		
2	A	1	20	20	0	0

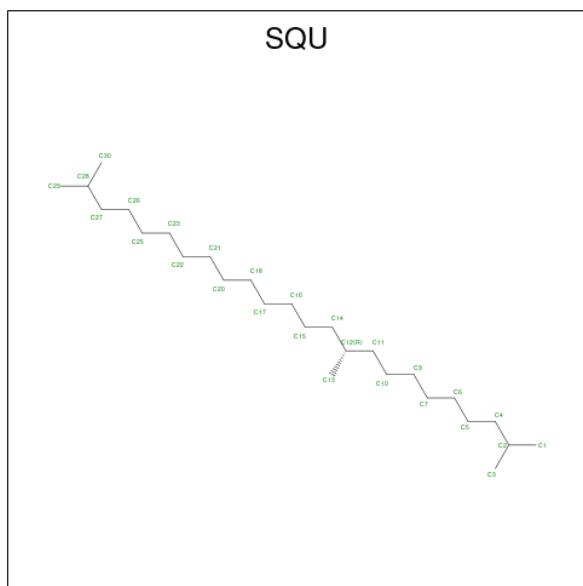
- Molecule 3 is 1-[2,6,10,14-TETRAMETHYL-HEXADECAN-16-YL]-2-[2,10,14-TRIMETHYLHEXADECAN-16-YL]GLYCEROL (three-letter code: LI1) (formula: C₄₂H₈₆O₃).



Mol	Chain	Residues	Atoms	ZeroOcc	AltConf
3	A	1	Total C O 32 29 3	0	0
3	A	1	Total C O 41 38 3	0	0
3	A	1	Total C 18 18	0	0
3	A	1	Total C 16 16	0	0
3	A	1	Total C 8 8	0	0
3	A	1	Total C 8 8	0	0
3	A	1	Total C O 38 35 3	0	0
3	A	1	Total C 18 18	0	0
3	A	1	Total C 16 16	0	0
3	A	1	Total C O 40 37 3	0	0
3	A	1	Total C 17 17	0	0
3	A	1	Total C 18 18	0	0
3	A	1	Total C 13 13	0	0

- Molecule 4 is 2,10,23-TRIMETHYL-TETRACOSANE (three-letter code: SQU) (formula:

C₂₇H₅₆).



Mol	Chain	Residues	Atoms	ZeroOcc	AltConf
4	A	1	Total C 27 27	0	0

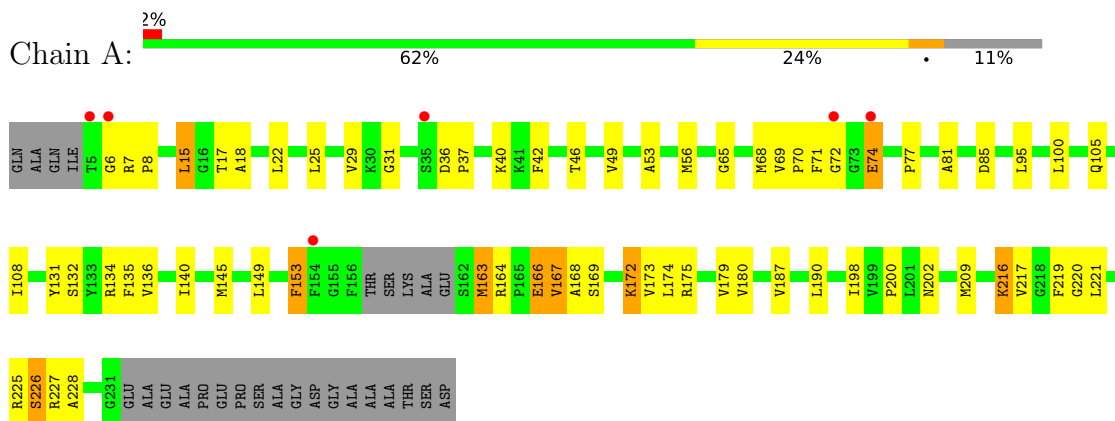
- Molecule 5 is water.

Mol	Chain	Residues	Atoms	ZeroOcc	AltConf
5	A	20	Total O 20 20	0	0

3 Residue-property plots [i](#)

These plots are drawn for all protein, RNA, DNA and oligosaccharide chains in the entry. The first graphic for a chain summarises the proportions of the various outlier classes displayed in the second graphic. The second graphic shows the sequence view annotated by issues in geometry and electron density. Residues are color-coded according to the number of geometric quality criteria for which they contain at least one outlier: green = 0, yellow = 1, orange = 2 and red = 3 or more. A red dot above a residue indicates a poor fit to the electron density ($RSRZ > 2$). Stretches of 2 or more consecutive residues without any outlier are shown as a green connector. Residues present in the sample, but not in the model, are shown in grey.

- Molecule 1: Bacteriorhodopsin



4 Data and refinement statistics i

Property	Value	Source
Space group	P 63	Depositor
Cell constants a, b, c, α , β , γ	61.02Å 61.02Å 110.04Å 90.00° 90.00° 120.00°	Depositor
Resolution (Å)	25.00 – 2.08 24.40 – 2.09	Depositor EDS
% Data completeness (in resolution range)	100.0 (25.00-2.08) 93.1 (24.40-2.09)	Depositor EDS
R_{merge}	0.07	Depositor
R_{sym}	(Not available)	Depositor
$\langle I/\sigma(I) \rangle$ ¹	3.98 (at 2.08Å)	Xtrriage
Refinement program	SHELXL-97	Depositor
R, R_{free}	0.153 , 0.260 0.147 , (Not available)	Depositor DCC
R_{free} test set	No test flags present.	wwPDB-VP
Wilson B-factor (Å ²)	24.7	Xtrriage
Anisotropy	0.410	Xtrriage
Bulk solvent k_{sol} (e/Å ³), B_{sol} (Å ²)	0.20 , 219.4	EDS
L-test for twinning ²	$\langle L \rangle = 0.51$, $\langle L^2 \rangle = 0.34$	Xtrriage
Estimated twinning fraction	0.072 for h,-h-k,-l	Xtrriage
F_o, F_c correlation	0.96	EDS
Total number of atoms	2067	wwPDB-VP
Average B, all atoms (Å ²)	35.0	wwPDB-VP

Xtrriage's analysis on translational NCS is as follows: *The largest off-origin peak in the Patterson function is 11.12% of the height of the origin peak. No significant pseudotranslation is detected.*

¹Intensities estimated from amplitudes.

²Theoretical values of $\langle |L| \rangle$, $\langle L^2 \rangle$ for acentric reflections are 0.5, 0.333 respectively for untwinned datasets, and 0.375, 0.2 for perfectly twinned datasets.

5 Model quality [i](#)

5.1 Standard geometry [i](#)

Bond lengths and bond angles in the following residue types are not validated in this section: LI1, RET, SQU

The Z score for a bond length (or angle) is the number of standard deviations the observed value is removed from the expected value. A bond length (or angle) with $|Z| > 5$ is considered an outlier worth inspection. RMSZ is the root-mean-square of all Z scores of the bond lengths (or angles).

Mol	Chain	Bond lengths		Bond angles	
		RMSZ	# Z >5	RMSZ	# Z >5
1	A	0.31	0/1764	1.01	4/2409 (0.2%)

There are no bond length outliers.

All (4) bond angle outliers are listed below:

Mol	Chain	Res	Type	Atoms	Z	Observed(°)	Ideal(°)
1	A	216	LYS	CD-CE-NZ	12.07	139.46	111.70
1	A	216	LYS	CA-CB-CG	-8.66	94.34	113.40
1	A	216	LYS	CB-CG-CD	7.03	129.86	111.60
1	A	7	ARG	NE-CZ-NH1	6.13	123.36	120.30

There are no chirality outliers.

There are no planarity outliers.

5.2 Too-close contacts [i](#)

In the following table, the Non-H and H(model) columns list the number of non-hydrogen atoms and hydrogen atoms in the chain respectively. The H(added) column lists the number of hydrogen atoms added and optimized by MolProbity. The Clashes column lists the number of clashes within the asymmetric unit, whereas Symm-Clashes lists symmetry-related clashes.

Mol	Chain	Non-H	H(model)	H(added)	Clashes	Symm-Clashes
1	A	1717	0	1777	82	0
2	A	20	0	27	1	0
3	A	283	0	456	81	0
4	A	27	0	53	3	0
5	A	20	0	0	3	0
All	All	2067	0	2313	123	0

The all-atom clashscore is defined as the number of clashes found per 1000 atoms (including hydrogen atoms). The all-atom clashscore for this structure is 28.

All (123) close contacts within the same asymmetric unit are listed below, sorted by their clash magnitude.

Atom-1	Atom-2	Interatomic distance (Å)	Clash overlap (Å)
3:A:611:LI1:C26	3:A:611:LI1:C25	1.74	1.64
3:A:610:LI1:C26	3:A:610:LI1:C25	1.74	1.54
3:A:601:LI1:H222	3:A:601:LI1:H471	1.42	0.97
1:A:180:VAL:HG23	3:A:610:LI1:H212	1.49	0.95
3:A:611:LI1:C25	3:A:611:LI1:C27	2.53	0.85
3:A:610:LI1:C25	3:A:610:LI1:C27	2.53	0.85
3:A:610:LI1:C26	3:A:610:LI1:C23	2.58	0.81
3:A:611:LI1:C26	3:A:611:LI1:C23	2.58	0.81
1:A:136:VAL:HG22	3:A:602:LI1:H531	1.61	0.81
3:A:611:LI1:H262	3:A:611:LI1:H241	1.63	0.79
3:A:602:LI1:H161	3:A:603:LI1:H141	1.65	0.78
1:A:25:LEU:O	1:A:29:VAL:HG23	1.84	0.78
1:A:18:ALA:O	1:A:22:LEU:HD13	1.86	0.73
1:A:68:MET:HE1	1:A:77:PRO:HA	1.76	0.67
1:A:180:VAL:HG21	3:A:610:LI1:H511	1.77	0.66
1:A:136:VAL:HA	3:A:602:LI1:H531	1.79	0.64
1:A:187:VAL:HG22	3:A:603:LI1:H28	1.82	0.62
1:A:18:ALA:HA	3:A:606:LI1:H202	1.80	0.62
1:A:153:PHE:CZ	1:A:179:VAL:HG21	2.35	0.61
1:A:6:GLY:O	1:A:8:PRO:HD3	2.00	0.61
1:A:131:TYR:CE2	3:A:602:LI1:H112	2.36	0.61
3:A:610:LI1:H511	3:A:610:LI1:H58	1.83	0.60
1:A:131:TYR:OH	3:A:602:LI1:H13	2.02	0.59
1:A:53:ALA:HB2	1:A:216:LYS:HD3	1.86	0.58
3:A:610:LI1:H122	3:A:610:LI1:H412	1.84	0.58
1:A:172:LYS:HD3	3:A:610:LI1:H32	1.85	0.58
3:A:610:LI1:H502	3:A:610:LI1:H591	1.86	0.58
1:A:136:VAL:HA	3:A:602:LI1:H552	1.84	0.57
1:A:56:MET:HG3	1:A:85:ASP:HB2	1.85	0.57
1:A:29:VAL:HG21	3:A:611:LI1:H192	1.86	0.57
1:A:221:LEU:O	1:A:225:ARG:HG2	2.04	0.57
1:A:179:VAL:HG11	3:A:610:LI1:H171	1.87	0.56
1:A:175:ARG:NH2	3:A:610:LI1:H12	2.21	0.55
1:A:29:VAL:HG11	3:A:611:LI1:H13	1.89	0.55
3:A:602:LI1:H142	3:A:603:LI1:H142	1.89	0.55
3:A:602:LI1:H172	3:A:602:LI1:H443	1.89	0.54
1:A:179:VAL:HG11	3:A:610:LI1:C17	2.37	0.54

Continued on next page...

Continued from previous page...

Atom-1	Atom-2	Interatomic distance (Å)	Clash overlap (Å)
3:A:611:LI1:H262	3:A:611:LI1:C24	2.35	0.54
1:A:131:TYR:OH	3:A:602:LI1:H162	2.08	0.54
1:A:180:VAL:HG21	3:A:610:LI1:C51	2.37	0.53
1:A:70:PRO:HA	1:A:74:GLU:O	2.09	0.53
1:A:132:SER:HB2	5:A:419:HOH:O	2.09	0.53
1:A:140:ILE:HD11	3:A:601:LI1:H252	1.90	0.52
3:A:611:LI1:C26	3:A:611:LI1:C24	2.87	0.52
1:A:202:ASN:HD22	1:A:202:ASN:H	1.57	0.52
1:A:31:GLY:HA3	5:A:512:HOH:O	2.10	0.52
3:A:610:LI1:C25	3:A:610:LI1:H272	2.37	0.52
1:A:153:PHE:CZ	3:A:610:LI1:C13	2.93	0.51
1:A:72:GLY:O	1:A:74:GLU:HG2	2.11	0.51
3:A:602:LI1:C51	3:A:602:LI1:H592	2.41	0.51
3:A:602:LI1:C59	3:A:602:LI1:H501	2.41	0.51
1:A:140:ILE:HG13	3:A:601:LI1:H272	1.92	0.51
1:A:175:ARG:HH21	3:A:610:LI1:H12	1.75	0.51
3:A:602:LI1:H592	3:A:602:LI1:H551	1.92	0.50
1:A:153:PHE:CE1	3:A:610:LI1:C13	2.95	0.50
1:A:198:ILE:HG21	3:A:604:LI1:H171	1.94	0.48
1:A:17:THR:HG22	3:A:606:LI1:H172	1.96	0.48
1:A:46:THR:HG23	1:A:220:GLY:HA3	1.95	0.48
1:A:163:MET:HG3	1:A:167:VAL:HG12	1.95	0.48
1:A:36:ASP:HA	1:A:37:PRO:HD2	1.67	0.47
1:A:172:LYS:HD3	3:A:610:LI1:C3	2.43	0.47
1:A:131:TYR:HE2	3:A:602:LI1:H151	1.78	0.47
1:A:169:SER:O	1:A:173:VAL:HG23	2.14	0.47
1:A:65:GLY:HA3	1:A:81:ALA:HB2	1.97	0.47
1:A:226:SER:OG	1:A:228:ALA:HB3	2.15	0.47
3:A:602:LI1:H592	3:A:602:LI1:H501	1.96	0.47
1:A:187:VAL:HG21	3:A:610:LI1:H292	1.97	0.46
3:A:601:LI1:H12	3:A:601:LI1:H412	1.30	0.46
1:A:175:ARG:O	1:A:179:VAL:HG23	2.15	0.46
3:A:612:LI1:H143	5:A:512:HOH:O	2.15	0.46
1:A:42:PHE:CE1	1:A:100:LEU:HD13	2.51	0.46
1:A:187:VAL:HG11	3:A:610:LI1:C29	2.45	0.46
3:A:610:LI1:H502	3:A:610:LI1:C59	2.45	0.46
1:A:136:VAL:HA	3:A:602:LI1:C53	2.46	0.45
4:A:701:SQU:H13	4:A:701:SQU:H182	1.97	0.45
2:A:300:RET:H181	2:A:300:RET:H7	1.72	0.45
1:A:190:LEU:HD23	3:A:603:LI1:H222	1.98	0.45
1:A:136:VAL:CG2	3:A:602:LI1:H531	2.38	0.45

Continued on next page...

Continued from previous page...

Atom-1	Atom-2	Interatomic distance (Å)	Clash overlap (Å)
1:A:175:ARG:O	1:A:175:ARG:HG2	2.17	0.45
3:A:613:LI1:H201	3:A:613:LI1:H162	1.75	0.45
1:A:56:MET:HE1	3:A:607:LI1:H501	1.98	0.45
1:A:69:VAL:HG12	1:A:71:PHE:HD2	1.81	0.45
3:A:601:LI1:H193	3:A:601:LI1:H162	1.78	0.45
3:A:602:LI1:H461	3:A:602:LI1:H492	1.14	0.45
3:A:602:LI1:H551	3:A:602:LI1:H511	1.60	0.45
1:A:187:VAL:HG21	3:A:610:LI1:C29	2.46	0.45
1:A:200:PRO:HB2	1:A:202:ASN:ND2	2.32	0.45
1:A:153:PHE:HA	1:A:175:ARG:HD2	1.99	0.44
3:A:602:LI1:H161	3:A:603:LI1:C14	2.43	0.44
1:A:136:VAL:HG22	3:A:602:LI1:C53	2.42	0.44
1:A:153:PHE:CE2	1:A:179:VAL:HG21	2.53	0.44
3:A:602:LI1:H592	3:A:602:LI1:C50	2.48	0.44
3:A:610:LI1:H272	3:A:610:LI1:H251	2.00	0.43
1:A:221:LEU:HD11	4:A:701:SQU:H272	1.99	0.43
1:A:135:PHE:CD1	3:A:602:LI1:H212	2.54	0.43
1:A:153:PHE:HZ	3:A:610:LI1:H172	1.83	0.43
1:A:174:LEU:HD22	1:A:219:PHE:CE2	2.54	0.43
1:A:136:VAL:HA	3:A:602:LI1:C55	2.49	0.43
1:A:167:VAL:HG12	1:A:168:ALA:N	2.34	0.43
1:A:202:ASN:H	1:A:202:ASN:ND2	2.15	0.43
3:A:601:LI1:H303	3:A:608:LI1:H303	2.00	0.42
1:A:166:GLU:H	1:A:166:GLU:HG3	1.28	0.42
3:A:602:LI1:H493	3:A:602:LI1:H462	1.26	0.42
1:A:131:TYR:O	1:A:134:ARG:HB2	2.18	0.42
1:A:140:ILE:CG1	3:A:601:LI1:H272	2.49	0.42
3:A:611:LI1:H252	3:A:611:LI1:H211	1.55	0.42
3:A:602:LI1:H442	3:A:602:LI1:H411	1.43	0.42
1:A:217:VAL:CG1	4:A:701:SQU:H201	2.50	0.41
1:A:153:PHE:CD1	1:A:175:ARG:HD2	2.56	0.41
3:A:610:LI1:H412	3:A:610:LI1:C12	2.48	0.41
1:A:56:MET:HE2	1:A:56:MET:HA	2.03	0.41
1:A:131:TYR:CZ	3:A:602:LI1:H13	2.56	0.41
1:A:25:LEU:HD13	3:A:611:LI1:H252	2.03	0.41
1:A:29:VAL:CG1	3:A:611:LI1:H13	2.50	0.41
1:A:49:VAL:CG1	1:A:216:LYS:HG2	2.51	0.41
3:A:601:LI1:C30	3:A:608:LI1:H303	2.51	0.41
1:A:105:GLN:O	1:A:108:ILE:HB	2.20	0.41
3:A:602:LI1:H172	3:A:602:LI1:H451	2.02	0.41
3:A:612:LI1:H141	3:A:612:LI1:H162	1.96	0.41

Continued on next page...

Continued from previous page...

Atom-1	Atom-2	Interatomic distance (Å)	Clash overlap (Å)
1:A:145:MET:O	1:A:149:LEU:HG	2.21	0.40
1:A:221:LEU:HD23	1:A:221:LEU:HA	1.94	0.40
1:A:15:LEU:HB3	1:A:209:MET:HE2	2.04	0.40
1:A:190:LEU:CD2	3:A:603:LI1:H222	2.50	0.40

There are no symmetry-related clashes.

5.3 Torsion angles [i](#)

5.3.1 Protein backbone [i](#)

In the following table, the Percentiles column shows the percent Ramachandran outliers of the chain as a percentile score with respect to all X-ray entries followed by that with respect to entries of similar resolution.

The Analysed column shows the number of residues for which the backbone conformation was analysed, and the total number of residues.

Mol	Chain	Analysed	Favoured	Allowed	Outliers	Percentiles
1	A	218/249 (88%)	213 (98%)	5 (2%)	0	100 100

There are no Ramachandran outliers to report.

5.3.2 Protein sidechains [i](#)

In the following table, the Percentiles column shows the percent sidechain outliers of the chain as a percentile score with respect to all X-ray entries followed by that with respect to entries of similar resolution.

The Analysed column shows the number of residues for which the sidechain conformation was analysed, and the total number of residues.

Mol	Chain	Analysed	Rotameric	Outliers	Percentiles
1	A	177/194 (91%)	165 (93%)	12 (7%)	16 12

All (12) residues with a non-rotameric sidechain are listed below:

Mol	Chain	Res	Type
1	A	15	LEU
1	A	40	LYS

Continued on next page...

Continued from previous page...

Mol	Chain	Res	Type
1	A	74	GLU
1	A	95	LEU
1	A	153	PHE
1	A	163	MET
1	A	164	ARG
1	A	166	GLU
1	A	167	VAL
1	A	172	LYS
1	A	226	SER
1	A	227	ARG

Sometimes sidechains can be flipped to improve hydrogen bonding and reduce clashes. All (1) such sidechains are listed below:

Mol	Chain	Res	Type
1	A	202	ASN

5.3.3 RNA [i](#)

There are no RNA molecules in this entry.

5.4 Non-standard residues in protein, DNA, RNA chains [i](#)

There are no non-standard protein/DNA/RNA residues in this entry.

5.5 Carbohydrates [i](#)

There are no monosaccharides in this entry.

5.6 Ligand geometry [i](#)

15 ligands are modelled in this entry.

In the following table, the Counts columns list the number of bonds (or angles) for which Mogul statistics could be retrieved, the number of bonds (or angles) that are observed in the model and the number of bonds (or angles) that are defined in the Chemical Component Dictionary. The Link column lists molecule types, if any, to which the group is linked. The Z score for a bond length (or angle) is the number of standard deviations the observed value is removed from the expected value. A bond length (or angle) with $|Z| > 2$ is considered an outlier worth inspection. RMSZ is the root-mean-square of all Z scores of the bond lengths (or angles).

Mol	Type	Chain	Res	Link	Bond lengths			Bond angles		
					Counts	RMSZ	# Z > 2	Counts	RMSZ	# Z > 2
4	SQU	A	701	-	26,26,26	1.40	6 (23%)	28,28,28	1.93	10 (35%)
3	LI1	A	610	-	39,39,44	1.25	3 (7%)	41,41,51	1.25	4 (9%)
2	RET	A	300	1	20,20,21	0.90	1 (5%)	27,27,28	1.54	3 (11%)
3	LI1	A	608	-	17,17,44	1.07	1 (5%)	18,18,51	1.21	3 (16%)
3	LI1	A	601	-	31,31,44	1.11	2 (6%)	33,33,51	1.23	4 (12%)
3	LI1	A	606	-	7,7,44	0.47	0	6,6,51	0.68	0
3	LI1	A	607	-	37,37,44	1.07	2 (5%)	37,38,51	1.04	3 (8%)
3	LI1	A	602	-	40,40,44	1.04	2 (5%)	43,45,51	2.96	9 (20%)
3	LI1	A	613	-	12,12,44	0.48	0	12,12,51	1.04	1 (8%)
3	LI1	A	603	-	17,17,44	1.08	1 (5%)	18,18,51	1.13	1 (5%)
3	LI1	A	609	-	15,15,44	1.16	1 (6%)	14,14,51	1.20	2 (14%)
3	LI1	A	612	-	17,17,44	1.06	1 (5%)	18,18,51	1.16	2 (11%)
3	LI1	A	604	-	15,15,44	1.12	1 (6%)	14,14,51	1.18	2 (14%)
3	LI1	A	605	-	7,7,44	0.45	0	6,6,51	0.65	0
3	LI1	A	611	-	16,16,44	1.13	1 (6%)	18,18,51	1.41	5 (27%)

In the following table, the Chirals column lists the number of chiral outliers, the number of chiral centers analysed, the number of these observed in the model and the number defined in the Chemical Component Dictionary. Similar counts are reported in the Torsion and Rings columns. '-' means no outliers of that kind were identified.

Mol	Type	Chain	Res	Link	Chirals	Torsions	Rings
4	SQU	A	701	-	-	17/25/25/25	-
3	LI1	A	610	-	-	27/39/39/49	-
2	RET	A	300	1	-	2/13/30/31	0/1/1/1
3	LI1	A	608	-	-	10/16/16/49	-
3	LI1	A	601	-	2/2/3/8	24/32/32/49	-
3	LI1	A	606	-	-	3/5/5/49	-
3	LI1	A	607	-	-	26/38/38/49	-
3	LI1	A	602	-	1/1/6/8	22/44/44/49	-
3	LI1	A	613	-	1/1/1/8	4/11/11/49	-
3	LI1	A	603	-	-	10/16/16/49	-
3	LI1	A	609	-	-	7/13/13/49	-
3	LI1	A	612	-	-	8/16/16/49	-
3	LI1	A	604	-	-	9/13/13/49	-
3	LI1	A	605	-	-	5/5/5/49	-

Continued on next page...

Continued from previous page...

Mol	Type	Chain	Res	Link	Chirals	Torsions	Rings
3	LI1	A	611	-	1/1/3/8	9/17/17/49	-

All (22) bond length outliers are listed below:

Mol	Chain	Res	Type	Atoms	Z	Observed(Å)	Ideal(Å)
3	A	611	LI1	C26-C25	4.18	1.74	1.51
3	A	610	LI1	C26-C25	4.16	1.74	1.51
3	A	607	LI1	C26-C25	4.05	1.74	1.51
3	A	608	LI1	C26-C25	4.02	1.74	1.51
3	A	603	LI1	C26-C25	4.00	1.74	1.51
3	A	601	LI1	C26-C25	3.99	1.74	1.51
3	A	604	LI1	C26-C25	3.95	1.73	1.51
3	A	612	LI1	C26-C25	3.95	1.73	1.51
3	A	602	LI1	C26-C25	3.94	1.73	1.51
3	A	609	LI1	C26-C25	3.90	1.73	1.51
3	A	610	LI1	O3-C3	3.50	1.57	1.42
4	A	701	SQU	C14-C12	-3.28	1.35	1.52
3	A	602	LI1	O3-C3	3.20	1.55	1.42
4	A	701	SQU	C23-C22	-3.15	1.33	1.51
3	A	607	LI1	O3-C3	2.96	1.54	1.42
3	A	601	LI1	O3-C3	2.93	1.54	1.42
4	A	701	SQU	C18-C17	-2.92	1.35	1.51
4	A	701	SQU	C9-C7	-2.85	1.35	1.51
4	A	701	SQU	C4-C2	-2.36	1.35	1.51
4	A	701	SQU	C27-C28	-2.33	1.35	1.51
3	A	610	LI1	C15-C13	2.24	1.64	1.51
2	A	300	RET	C2-C3	-2.15	1.47	1.52

All (49) bond angle outliers are listed below:

Mol	Chain	Res	Type	Atoms	Z	Observed(°)	Ideal(°)
3	A	602	LI1	C49-C48-C50	13.01	158.41	111.29
3	A	602	LI1	C24-C23-C25	-9.84	75.66	111.29
3	A	602	LI1	C49-C48-C47	-6.47	87.86	111.29
4	A	701	SQU	C15-C14-C12	4.76	131.29	115.92
3	A	608	LI1	C25-C26-C27	-3.63	100.78	113.62
3	A	610	LI1	C25-C26-C27	-3.55	101.06	113.62
3	A	601	LI1	C25-C26-C27	-3.52	101.17	113.62
3	A	603	LI1	C25-C26-C27	-3.43	101.48	113.62
3	A	612	LI1	C25-C26-C27	-3.34	101.80	113.62
4	A	701	SQU	C5-C4-C2	3.17	130.93	115.98
2	A	300	RET	C7-C6-C5	-3.14	113.86	121.46

Continued on next page...

Continued from previous page...

Mol	Chain	Res	Type	Atoms	Z	Observed(°)	Ideal(°)
2	A	300	RET	C2-C1-C6	3.12	115.29	110.48
3	A	610	LI1	O3-C3-C2	-3.10	103.56	111.78
4	A	701	SQU	C10-C9-C7	3.04	129.84	114.42
3	A	609	LI1	C27-C26-C25	-3.00	99.19	114.42
2	A	300	RET	C1-C6-C7	2.98	124.20	115.78
3	A	601	LI1	O3-C3-C2	-2.89	104.11	111.78
4	A	701	SQU	C25-C23-C22	2.87	128.99	114.42
4	A	701	SQU	C23-C22-C21	2.78	128.52	114.42
3	A	602	LI1	O3-C3-C2	-2.77	104.43	111.78
3	A	604	LI1	C27-C26-C25	-2.73	100.55	114.42
3	A	610	LI1	C15-C13-C12	-2.71	100.65	114.42
3	A	602	LI1	C51-C50-C48	-2.70	107.19	115.92
3	A	611	LI1	C27-C26-C25	-2.65	100.48	113.29
3	A	607	LI1	O3-C3-C2	-2.53	105.08	111.78
3	A	602	LI1	C26-C25-C23	-2.52	103.81	115.86
3	A	611	LI1	C26-C25-C23	-2.51	103.81	115.86
4	A	701	SQU	C26-C27-C28	2.50	127.77	115.98
4	A	701	SQU	C18-C17-C16	2.49	127.06	114.42
4	A	701	SQU	C20-C18-C17	2.47	126.97	114.42
4	A	701	SQU	C9-C7-C6	2.42	126.73	114.42
4	A	701	SQU	C14-C12-C11	2.38	124.65	112.13
3	A	602	LI1	C16-C15-C13	-2.35	108.31	115.92
3	A	613	LI1	C21-C20-C18	-2.32	108.42	115.92
3	A	602	LI1	C27-C26-C25	-2.30	102.19	113.29
3	A	607	LI1	O2-C41-C42	2.24	113.48	108.77
3	A	612	LI1	C26-C25-C23	-2.21	103.22	114.42
3	A	604	LI1	C26-C25-C23	-2.19	103.31	114.42
3	A	611	LI1	C21-C22-C23	-2.18	108.88	115.92
3	A	608	LI1	C21-C20-C18	-2.13	109.04	115.92
3	A	611	LI1	C16-C17-C18	-2.13	109.05	115.92
3	A	611	LI1	C21-C20-C18	-2.12	109.07	115.92
3	A	602	LI1	C21-C22-C23	-2.08	109.20	115.92
3	A	601	LI1	C21-C20-C18	-2.06	109.25	115.92
3	A	610	LI1	C26-C25-C23	-2.06	103.95	114.42
3	A	607	LI1	C26-C25-C23	-2.04	104.08	114.42
3	A	609	LI1	C26-C25-C23	-2.03	104.11	114.42
3	A	601	LI1	C26-C25-C23	-2.00	104.25	114.42
3	A	608	LI1	C26-C25-C23	-2.00	104.26	114.42

All (5) chirality outliers are listed below:

Continued on next page...

Continued from previous page...

Mol	Chain	Res	Type	Atom
-----	-------	-----	------	------

Mol	Chain	Res	Type	Atom
3	A	601	LI1	C2
3	A	601	LI1	C18
3	A	602	LI1	C48
3	A	611	LI1	C13
3	A	613	LI1	C18

All (183) torsion outliers are listed below:

Mol	Chain	Res	Type	Atoms
2	A	300	RET	C12-C13-C14-C15
2	A	300	RET	C20-C13-C14-C15
3	A	601	LI1	C1-C2-C3-O3
3	A	601	LI1	O2-C2-C3-O3
3	A	601	LI1	C1-C2-O2-C41
3	A	601	LI1	C16-C17-C18-C19
3	A	602	LI1	C1-C2-C3-O3
3	A	602	LI1	O2-C2-C3-O3
3	A	602	LI1	O2-C41-C42-C43
3	A	602	LI1	C41-C42-C43-C44
3	A	602	LI1	C46-C47-C48-C49
3	A	607	LI1	C41-C42-C43-C44
3	A	601	LI1	C20-C21-C22-C23
4	A	701	SQU	C20-C21-C22-C23
3	A	607	LI1	O1-C11-C12-C13
4	A	701	SQU	C5-C6-C7-C9
3	A	607	LI1	C44-C43-C45-C46
3	A	611	LI1	C16-C17-C18-C19
3	A	612	LI1	C14-C13-C15-C16
3	A	611	LI1	C18-C20-C21-C22
3	A	611	LI1	C20-C21-C22-C23
3	A	601	LI1	O2-C41-C42-C43
3	A	610	LI1	O2-C41-C42-C43
3	A	612	LI1	C25-C26-C27-C28
3	A	611	LI1	C23-C25-C26-C27
3	A	602	LI1	C51-C52-C53-C55
3	A	611	LI1	C21-C22-C23-C25
3	A	608	LI1	C18-C20-C21-C22
3	A	601	LI1	O1-C11-C12-C13
3	A	603	LI1	C13-C15-C16-C17
3	A	601	LI1	C18-C20-C21-C22
3	A	602	LI1	O1-C11-C12-C13

Continued on next page...

Continued from previous page...

Mol	Chain	Res	Type	Atoms
3	A	602	LI1	C53-C55-C56-C57
3	A	609	LI1	C13-C15-C16-C17
3	A	604	LI1	C22-C23-C25-C26
4	A	701	SQU	C17-C18-C20-C21
3	A	609	LI1	C21-C22-C23-C25
3	A	610	LI1	C25-C26-C27-C28
3	A	608	LI1	C20-C21-C22-C23
3	A	612	LI1	C15-C16-C17-C18
3	A	604	LI1	C17-C18-C20-C21
3	A	605	LI1	C15-C16-C17-C18
3	A	607	LI1	C21-C22-C23-C25
3	A	610	LI1	C52-C53-C55-C56
3	A	610	LI1	C22-C23-C25-C26
3	A	601	LI1	C11-C12-C13-C15
3	A	609	LI1	C20-C21-C22-C23
3	A	605	LI1	C16-C17-C18-C20
3	A	602	LI1	C56-C57-C58-C60
3	A	601	LI1	C12-C13-C15-C16
3	A	604	LI1	C18-C20-C21-C22
3	A	610	LI1	C46-C47-C48-C50
4	A	701	SQU	C10-C11-C12-C13
3	A	609	LI1	C25-C26-C27-C28
3	A	607	LI1	C46-C47-C48-C50
3	A	601	LI1	C42-C41-O2-C2
3	A	602	LI1	C52-C53-C55-C56
3	A	606	LI1	C15-C16-C17-C18
3	A	610	LI1	C26-C27-C28-C29
3	A	601	LI1	C43-C45-C46-C47
3	A	610	LI1	C13-C15-C16-C17
4	A	701	SQU	C11-C10-C9-C7
3	A	610	LI1	C21-C22-C23-C25
3	A	610	LI1	C43-C45-C46-C47
3	A	612	LI1	C17-C18-C20-C21
3	A	601	LI1	C22-C23-C25-C26
3	A	601	LI1	C46-C47-C48-C50
3	A	610	LI1	C16-C17-C18-C20
4	A	701	SQU	C16-C17-C18-C20
3	A	602	LI1	C56-C57-C58-C59
3	A	607	LI1	C51-C52-C53-C55
3	A	607	LI1	C53-C55-C56-C57
3	A	610	LI1	C17-C18-C20-C21
3	A	610	LI1	C41-C42-C43-C45

Continued on next page...

Continued from previous page...

Mol	Chain	Res	Type	Atoms
3	A	610	LI1	C56-C57-C58-C59
4	A	701	SQU	C3-C2-C4-C5
3	A	603	LI1	C18-C20-C21-C22
3	A	607	LI1	C15-C16-C17-C18
3	A	613	LI1	C15-C16-C17-C18
3	A	601	LI1	C45-C46-C47-C48
3	A	607	LI1	C52-C53-C55-C56
3	A	610	LI1	C56-C57-C58-C60
3	A	610	LI1	C26-C27-C28-C30
4	A	701	SQU	C26-C27-C28-C30
3	A	608	LI1	C23-C25-C26-C27
3	A	612	LI1	C21-C22-C23-C25
3	A	610	LI1	C20-C21-C22-C23
3	A	604	LI1	C16-C17-C18-C20
3	A	609	LI1	C12-C13-C15-C16
3	A	601	LI1	C19-C18-C20-C21
3	A	611	LI1	C19-C18-C20-C21
3	A	611	LI1	C21-C22-C23-C24
4	A	701	SQU	C4-C5-C6-C7
4	A	701	SQU	C22-C23-C25-C26
3	A	610	LI1	C51-C52-C53-C55
3	A	607	LI1	C22-C23-C25-C26
4	A	701	SQU	C18-C20-C21-C22
3	A	607	LI1	O1-C1-C2-C3
3	A	610	LI1	O1-C1-C2-C3
3	A	607	LI1	O2-C41-C42-C43
3	A	606	LI1	C13-C15-C16-C17
3	A	607	LI1	C18-C20-C21-C22
3	A	604	LI1	C25-C26-C27-C28
3	A	610	LI1	C53-C55-C56-C57
3	A	607	LI1	C47-C48-C50-C51
4	A	701	SQU	C14-C15-C16-C17
3	A	610	LI1	C48-C50-C51-C52
3	A	609	LI1	C26-C27-C28-C30
3	A	601	LI1	C16-C17-C18-C20
3	A	601	LI1	C17-C18-C20-C21
3	A	602	LI1	C47-C48-C50-C51
3	A	607	LI1	C42-C43-C45-C46
3	A	612	LI1	C12-C13-C15-C16
3	A	607	LI1	C25-C26-C27-C28
3	A	602	LI1	C44-C43-C45-C46
3	A	602	LI1	C21-C22-C23-C24

Continued on next page...

Continued from previous page...

Mol	Chain	Res	Type	Atoms
3	A	603	LI1	C14-C13-C15-C16
3	A	605	LI1	C17-C18-C20-C21
3	A	608	LI1	C25-C26-C27-C28
3	A	610	LI1	C2-C1-O1-C11
3	A	613	LI1	C11-C12-C13-C15
3	A	603	LI1	C23-C25-C26-C27
3	A	605	LI1	C18-C20-C21-C22
3	A	607	LI1	C41-C42-C43-C45
3	A	613	LI1	C21-C22-C23-C24
3	A	609	LI1	C15-C16-C17-C18
3	A	601	LI1	C2-C1-O1-C11
4	A	701	SQU	C2-C4-C5-C6
3	A	607	LI1	C1-C2-C3-O3
3	A	604	LI1	C13-C15-C16-C17
3	A	601	LI1	C26-C27-C28-C30
3	A	602	LI1	C42-C43-C45-C46
3	A	603	LI1	C12-C13-C15-C16
3	A	608	LI1	C16-C17-C18-C20
3	A	610	LI1	O2-C2-C3-O3
4	A	701	SQU	C26-C27-C28-C29
3	A	601	LI1	C26-C27-C28-C29
3	A	602	LI1	C18-C20-C21-C22
3	A	605	LI1	C13-C15-C16-C17
3	A	601	LI1	O1-C1-C2-C3
3	A	602	LI1	O1-C1-C2-C3
3	A	612	LI1	C22-C23-C25-C26
3	A	613	LI1	C13-C15-C16-C17
3	A	610	LI1	O1-C1-C2-O2
3	A	610	LI1	C23-C25-C26-C27
3	A	608	LI1	C21-C22-C23-C25
3	A	607	LI1	C12-C11-O1-C1
3	A	608	LI1	C11-C12-C13-C15
3	A	610	LI1	O1-C11-C12-C13
3	A	602	LI1	C41-C42-C43-C45
3	A	601	LI1	C12-C11-O1-C1
3	A	601	LI1	O1-C1-C2-O2
3	A	602	LI1	O1-C1-C2-O2
3	A	607	LI1	C48-C50-C51-C52
4	A	701	SQU	C6-C7-C9-C10
3	A	608	LI1	C16-C17-C18-C19
3	A	611	LI1	C24-C23-C25-C26
3	A	604	LI1	C11-C12-C13-C15

Continued on next page...

Continued from previous page...

Mol	Chain	Res	Type	Atoms
3	A	607	LI1	O1-C1-C2-O2
3	A	610	LI1	C42-C43-C45-C46
3	A	610	LI1	C55-C56-C57-C58
3	A	608	LI1	C26-C27-C28-C29
3	A	607	LI1	C17-C18-C20-C21
3	A	604	LI1	C23-C25-C26-C27
4	A	701	SQU	C23-C25-C26-C27
3	A	602	LI1	C50-C51-C52-C53
3	A	603	LI1	C20-C21-C22-C23
3	A	603	LI1	C25-C26-C27-C28
3	A	603	LI1	C11-C12-C13-C14
3	A	604	LI1	C20-C21-C22-C23
3	A	607	LI1	C20-C21-C22-C23
3	A	612	LI1	C13-C15-C16-C17
3	A	607	LI1	C56-C57-C58-C60
3	A	608	LI1	C12-C13-C15-C16
3	A	607	LI1	O2-C2-C3-O3
3	A	603	LI1	C11-C12-C13-C15
3	A	602	LI1	C49-C48-C50-C51
3	A	607	LI1	C55-C56-C57-C58
3	A	606	LI1	C18-C20-C21-C22
3	A	603	LI1	C16-C17-C18-C20
3	A	602	LI1	C13-C15-C16-C17
4	A	701	SQU	C13-C12-C14-C15
3	A	611	LI1	C16-C17-C18-C20

There are no ring outliers.

13 monomers are involved in 85 short contacts:

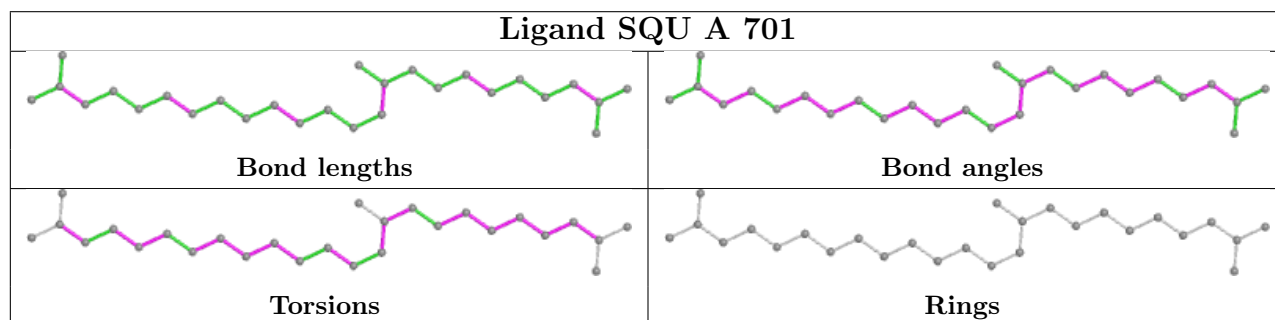
Mol	Chain	Res	Type	Clashes	Symm-Clashes
4	A	701	SQU	3	0
3	A	610	LI1	25	0
2	A	300	RET	1	0
3	A	608	LI1	2	0
3	A	601	LI1	8	0
3	A	606	LI1	2	0
3	A	607	LI1	1	0
3	A	602	LI1	27	0
3	A	613	LI1	1	0
3	A	603	LI1	6	0
3	A	612	LI1	2	0
3	A	604	LI1	1	0

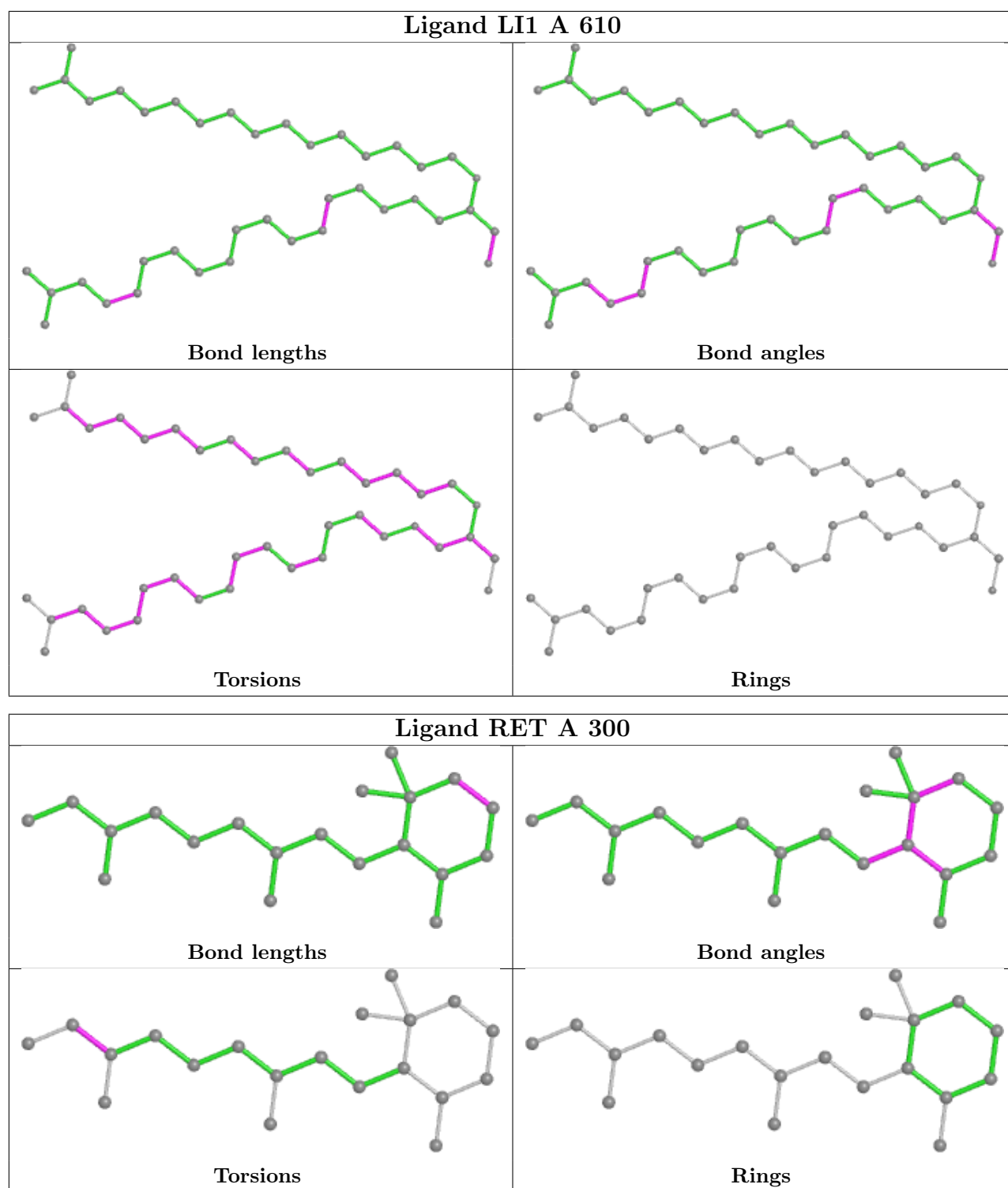
Continued on next page...

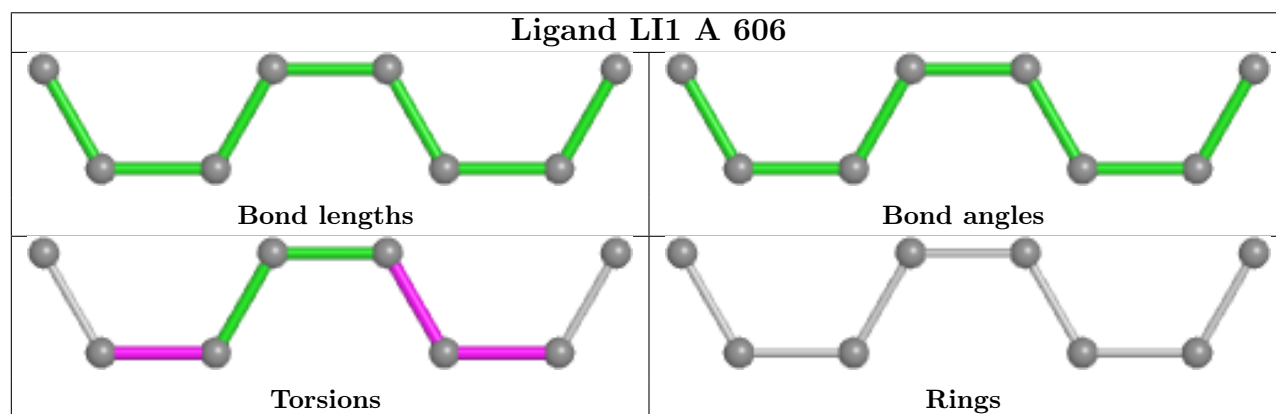
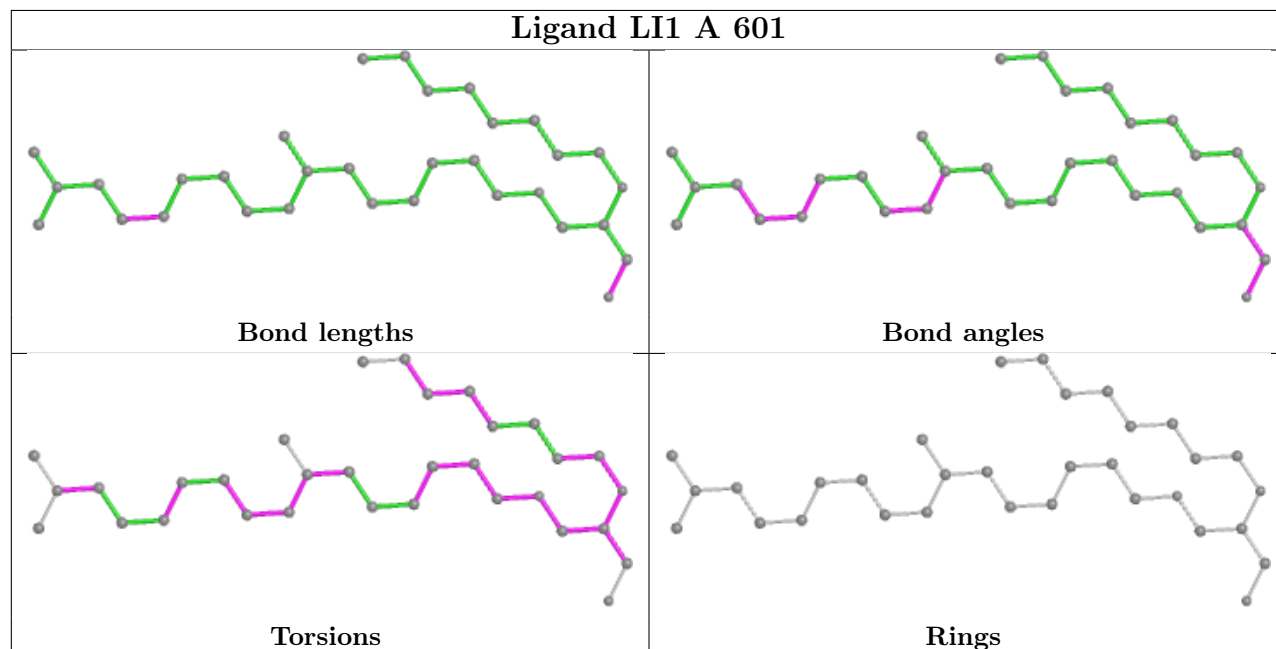
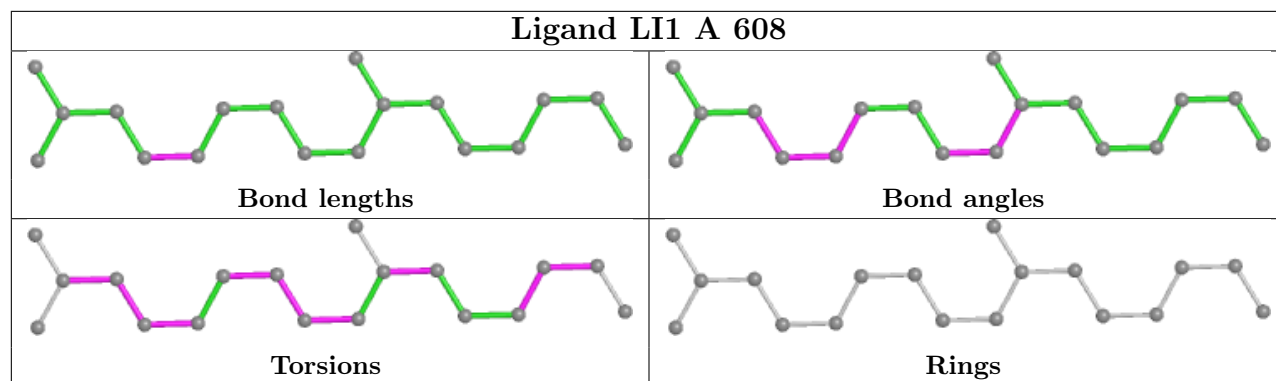
Continued from previous page...

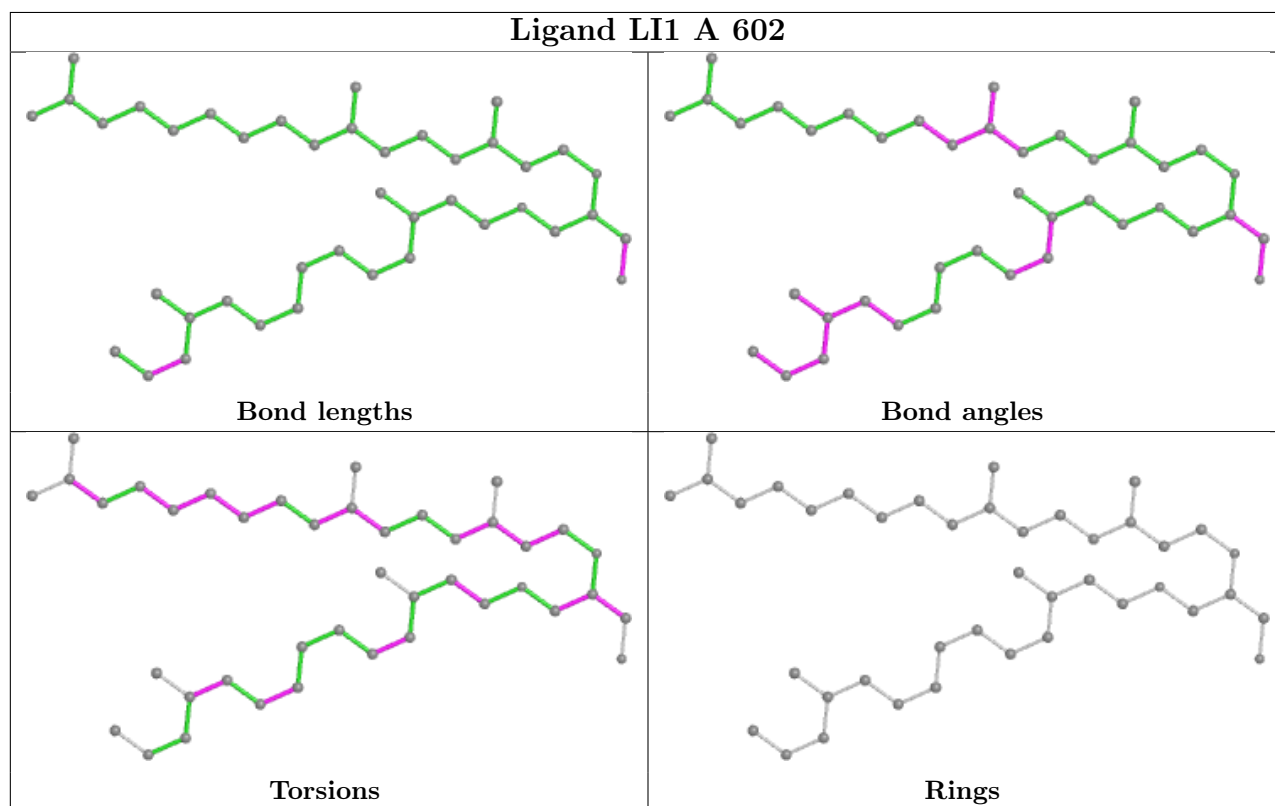
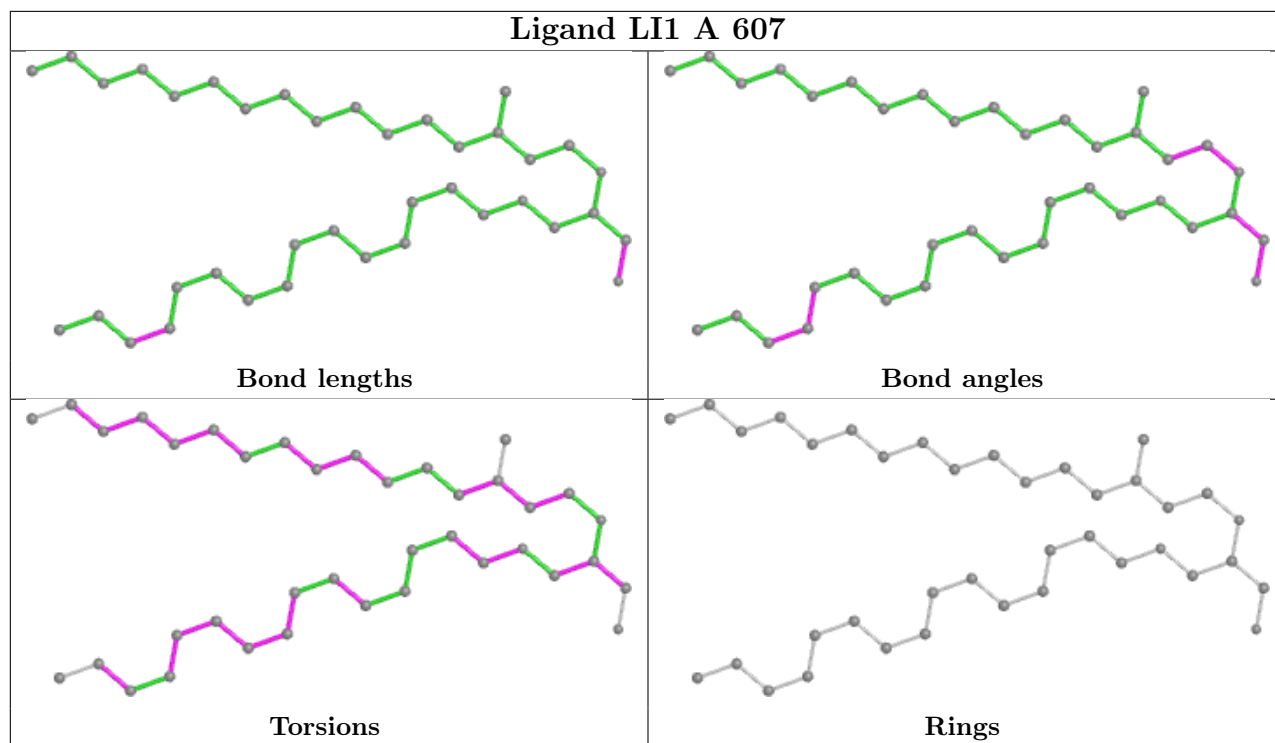
Mol	Chain	Res	Type	Clashes	Symm-Clashes
3	A	611	LI1	11	0

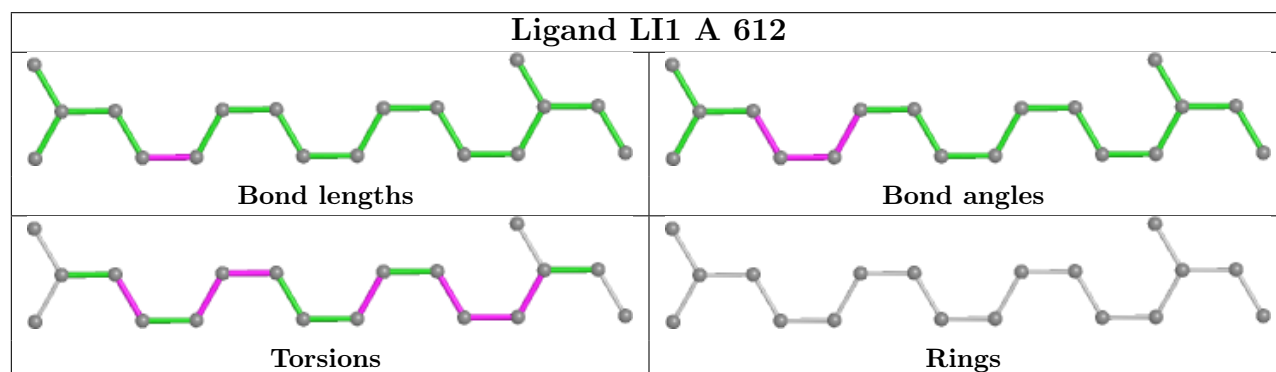
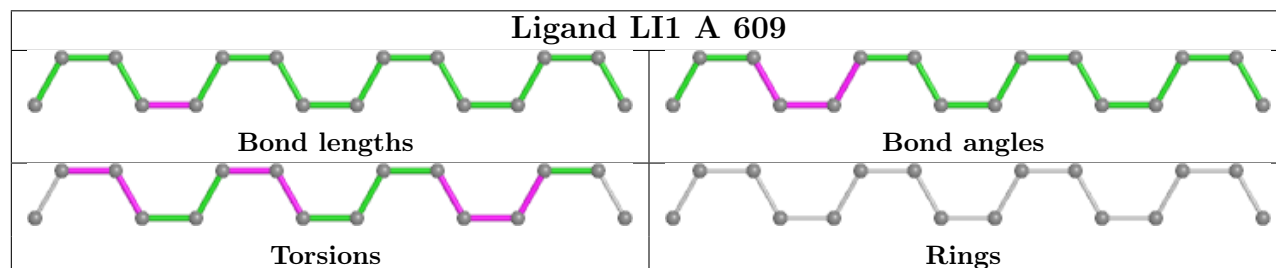
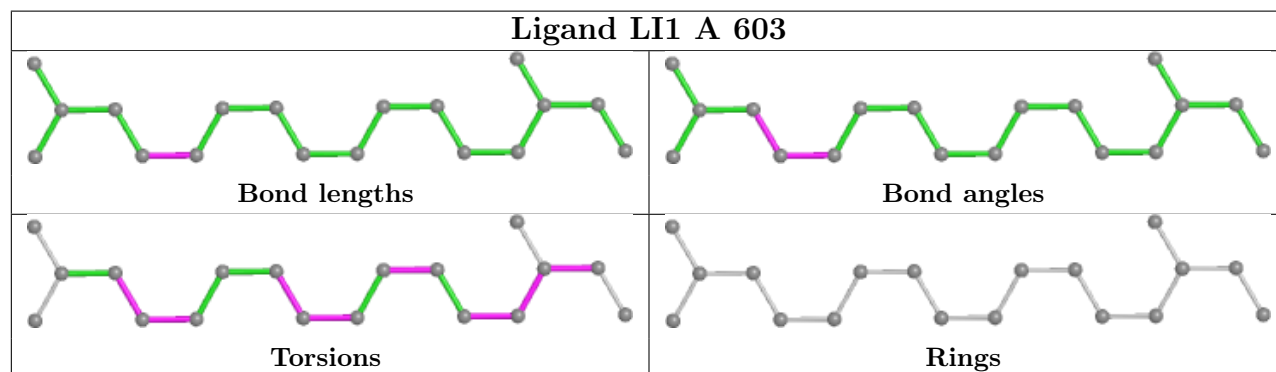
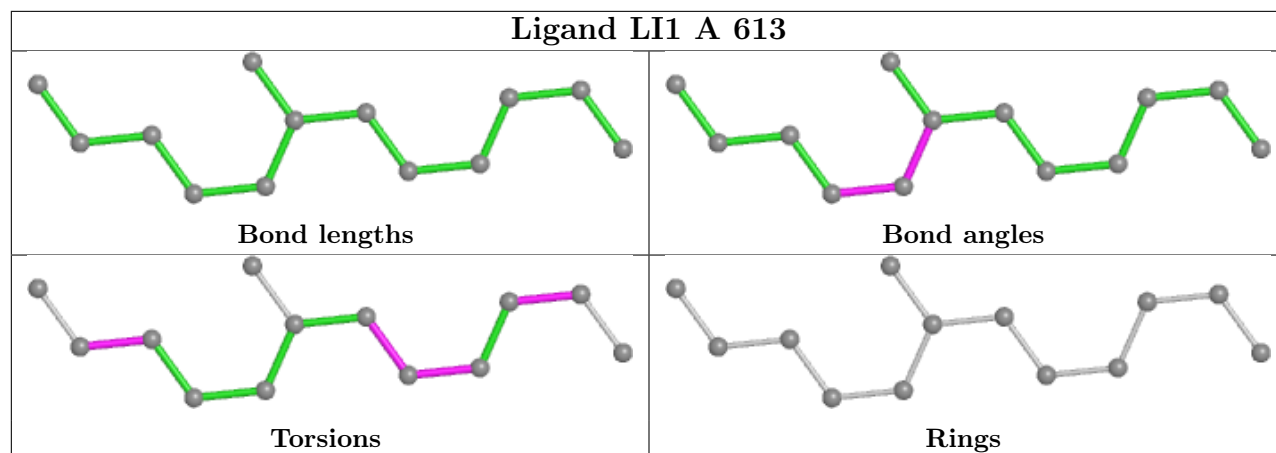
The following is a two-dimensional graphical depiction of Mogul quality analysis of bond lengths, bond angles, torsion angles, and ring geometry for all instances of the Ligand of Interest. In addition, ligands with molecular weight > 250 and outliers as shown on the validation Tables will also be included. For torsion angles, if less than 5% of the Mogul distribution of torsion angles is within 10 degrees of the torsion angle in question, then that torsion angle is considered an outlier. Any bond that is central to one or more torsion angles identified as an outlier by Mogul will be highlighted in the graph. For rings, the root-mean-square deviation (RMSD) between the ring in question and similar rings identified by Mogul is calculated over all ring torsion angles. If the average RMSD is greater than 60 degrees and the minimal RMSD between the ring in question and any Mogul-identified rings is also greater than 60 degrees, then that ring is considered an outlier. The outliers are highlighted in purple. The color gray indicates Mogul did not find sufficient equivalents in the CSD to analyse the geometry.

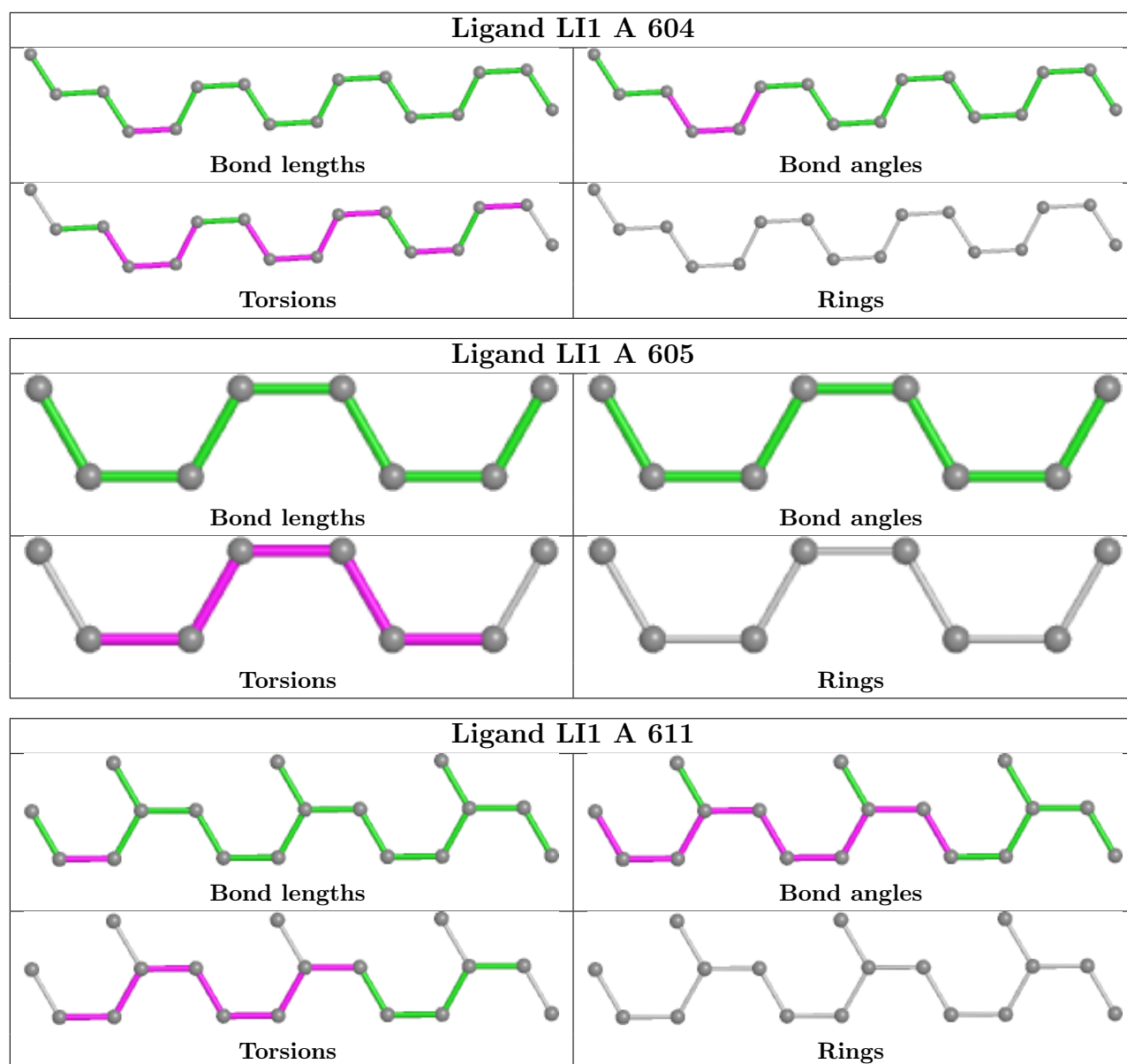












5.7 Other polymers [i](#)

There are no such residues in this entry.

5.8 Polymer linkage issues [i](#)

There are no chain breaks in this entry.

6 Fit of model and data [i](#)

6.1 Protein, DNA and RNA chains [i](#)

In the following table, the column labelled ‘#RSRZ> 2’ contains the number (and percentage) of RSRZ outliers, followed by percent RSRZ outliers for the chain as percentile scores relative to all X-ray entries and entries of similar resolution. The OWAB column contains the minimum, median, 95th percentile and maximum values of the occupancy-weighted average B-factor per residue. The column labelled ‘Q< 0.9’ lists the number of (and percentage) of residues with an average occupancy less than 0.9.

Mol	Chain	Analysed	<RSRZ>	#RSRZ>2	OWAB(Å ²)	Q<0.9
1	A	222/249 (89%)	-0.11	6 (2%) 54 59	14, 26, 51, 81	0

All (6) RSRZ outliers are listed below:

Mol	Chain	Res	Type	RSRZ
1	A	72	GLY	4.5
1	A	6	GLY	3.8
1	A	74	GLU	3.8
1	A	5	THR	2.7
1	A	154	PHE	2.6
1	A	35	SER	2.3

6.2 Non-standard residues in protein, DNA, RNA chains [i](#)

There are no non-standard protein/DNA/RNA residues in this entry.

6.3 Carbohydrates [i](#)

There are no monosaccharides in this entry.

6.4 Ligands [i](#)

In the following table, the Atoms column lists the number of modelled atoms in the group and the number defined in the chemical component dictionary. The B-factors column lists the minimum, median, 95th percentile and maximum values of B factors of atoms in the group. The column labelled ‘Q< 0.9’ lists the number of atoms with occupancy less than 0.9.

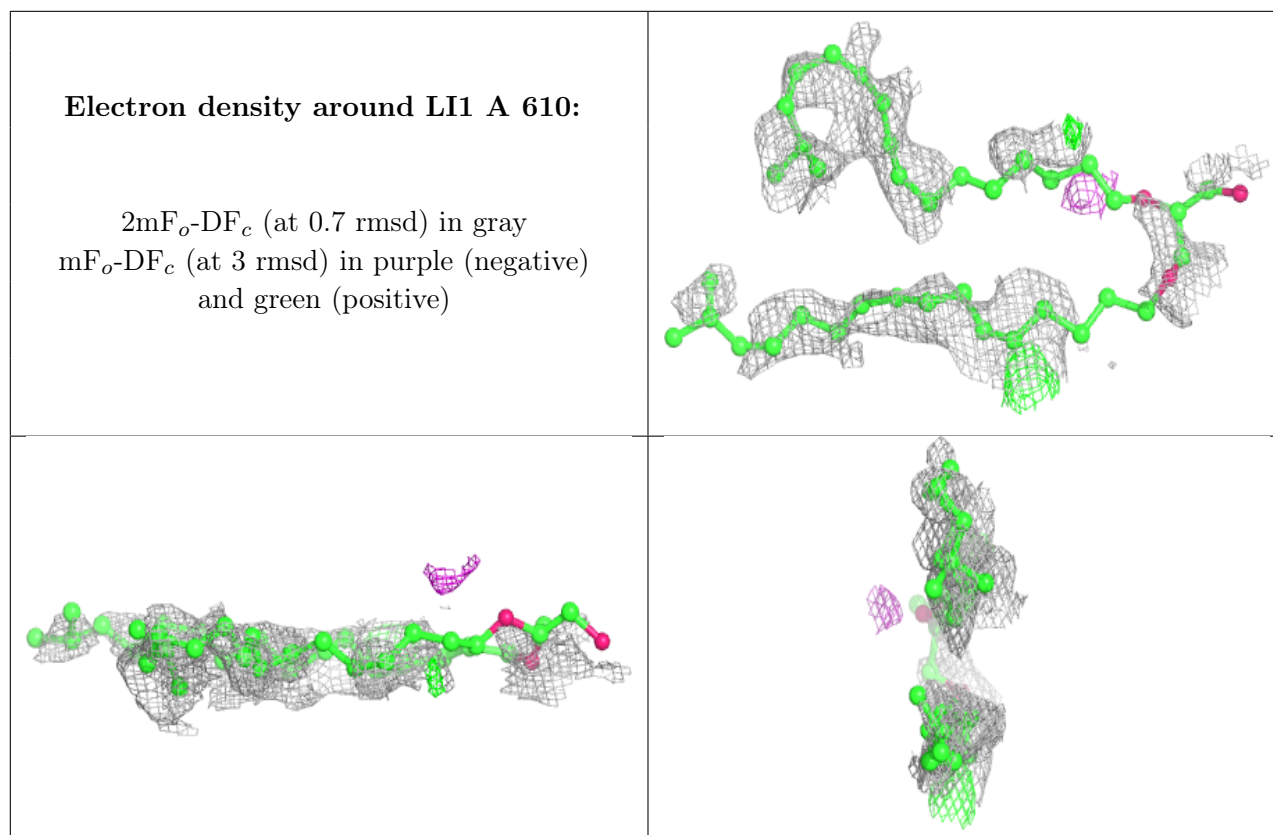
Mol	Type	Chain	Res	Atoms	RSCC	RSR	B-factors(Å ²)	Q<0.9
3	LI1	A	610	40/45	0.45	0.35	111,126,157,157	0

Continued on next page...

Continued from previous page...

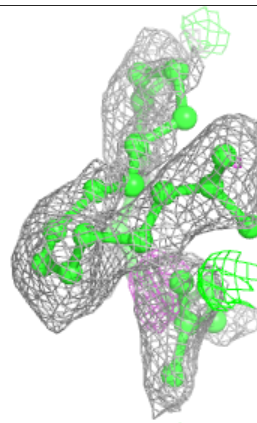
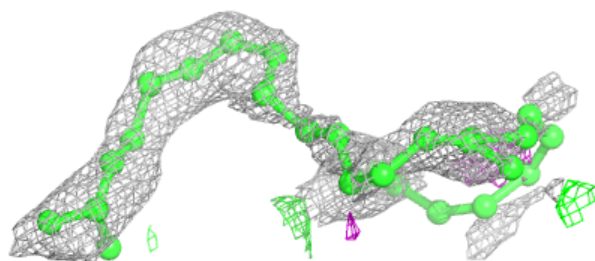
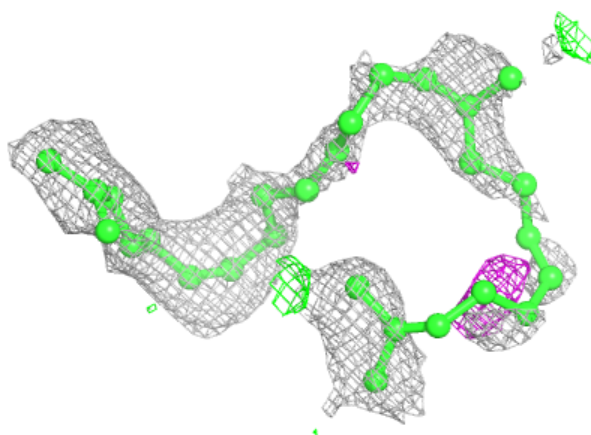
Mol	Type	Chain	Res	Atoms	RSCC	RSR	B-factors(\AA^2)	Q<0.9
4	SQU	A	701	27/27	0.68	0.31	44,66,97,99	0
3	LI1	A	604	16/45	0.72	0.23	35,76,90,91	0
3	LI1	A	608	18/45	0.75	0.26	25,51,60,61	0
3	LI1	A	609	16/45	0.78	0.19	35,56,101,102	0
3	LI1	A	611	17/45	0.80	0.19	49,65,97,107	0
3	LI1	A	605	8/45	0.81	0.17	62,68,73,75	0
3	LI1	A	607	38/45	0.83	0.15	21,63,89,114	0
3	LI1	A	601	32/45	0.85	0.16	27,60,81,81	0
3	LI1	A	603	18/45	0.85	0.17	29,54,68,77	0
3	LI1	A	602	41/45	0.86	0.18	22,78,107,112	0
3	LI1	A	612	18/45	0.89	0.19	20,34,49,71	0
3	LI1	A	606	8/45	0.90	0.14	27,68,80,80	0
2	RET	A	300	20/21	0.90	0.15	11,23,30,35	0
3	LI1	A	613	13/45	0.93	0.12	28,33,51,52	0

The following is a graphical depiction of the model fit to experimental electron density of all instances of the Ligand of Interest. In addition, ligands with molecular weight > 250 and outliers as shown on the geometry validation Tables will also be included. Each fit is shown from different orientation to approximate a three-dimensional view.

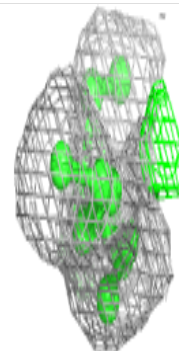
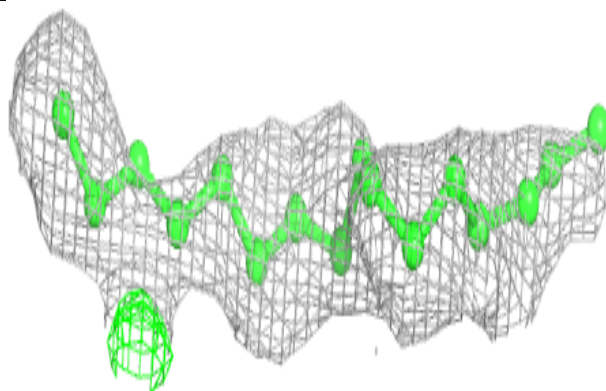
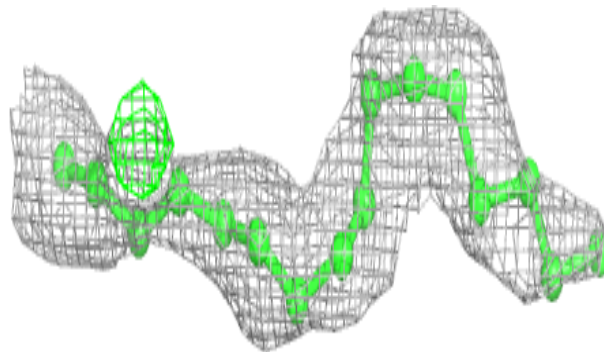


Electron density around SQU A 701:

$2mF_o-DF_c$ (at 0.7 rmsd) in gray
 mF_o-DF_c (at 3 rmsd) in purple (negative)
and green (positive)

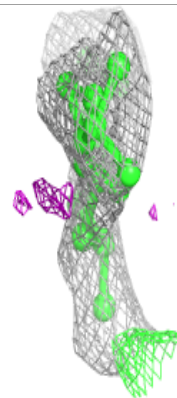
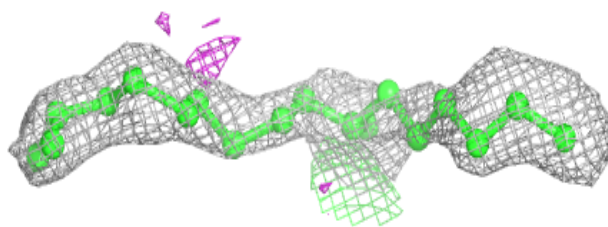
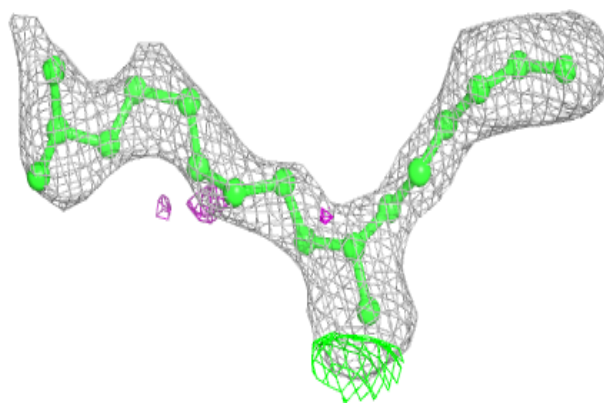
**Electron density around LI1 A 604:**

$2mF_o-DF_c$ (at 0.7 rmsd) in gray
 mF_o-DF_c (at 3 rmsd) in purple (negative)
and green (positive)

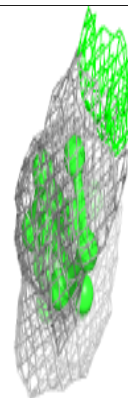
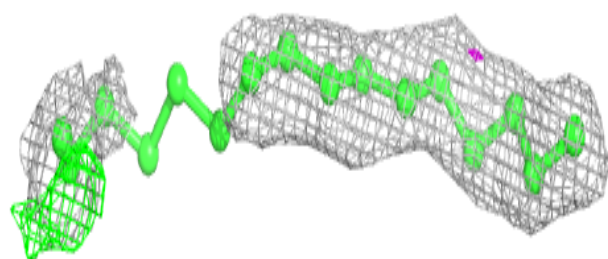
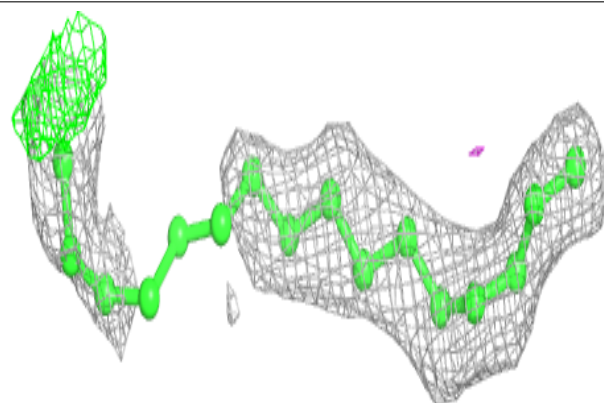


Electron density around LI1 A 608:

$2mF_o-DF_c$ (at 0.7 rmsd) in gray
 mF_o-DF_c (at 3 rmsd) in purple (negative)
and green (positive)

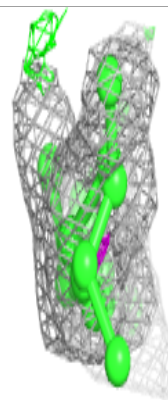
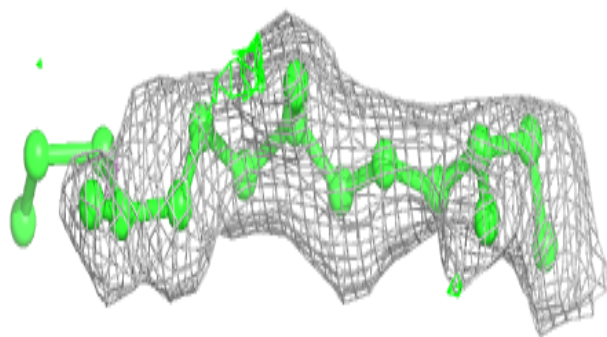
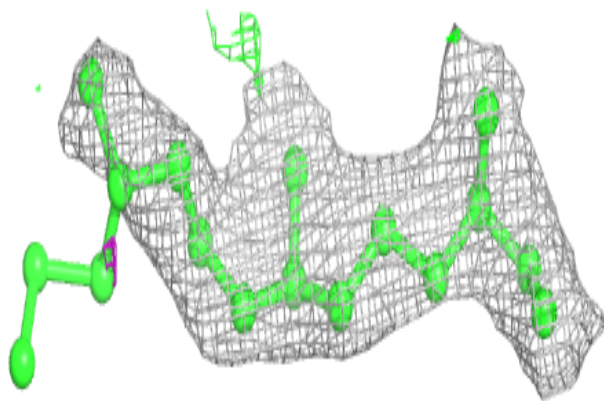
**Electron density around LI1 A 609:**

$2mF_o-DF_c$ (at 0.7 rmsd) in gray
 mF_o-DF_c (at 3 rmsd) in purple (negative)
and green (positive)

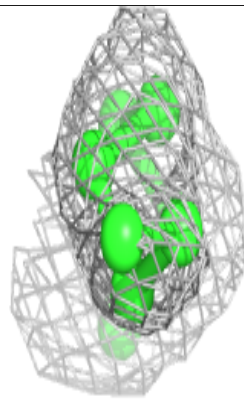
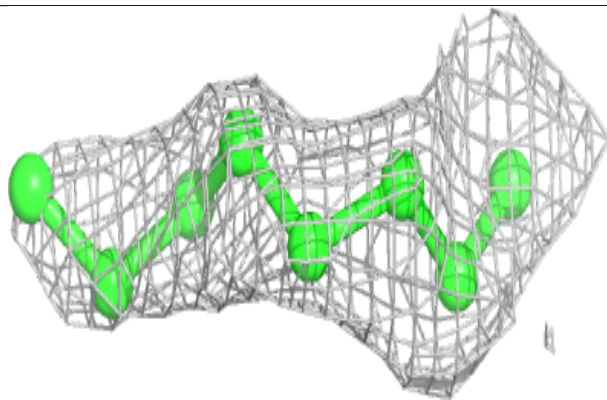
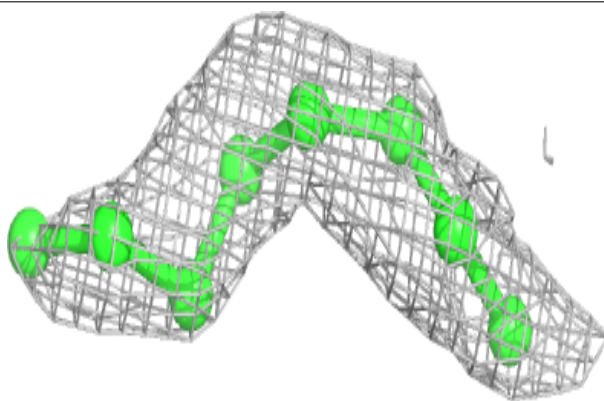


Electron density around LI1 A 611:

$2mF_o-DF_c$ (at 0.7 rmsd) in gray
 mF_o-DF_c (at 3 rmsd) in purple (negative)
and green (positive)

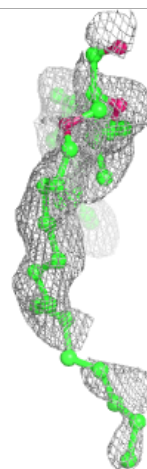
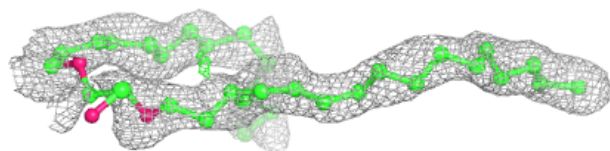
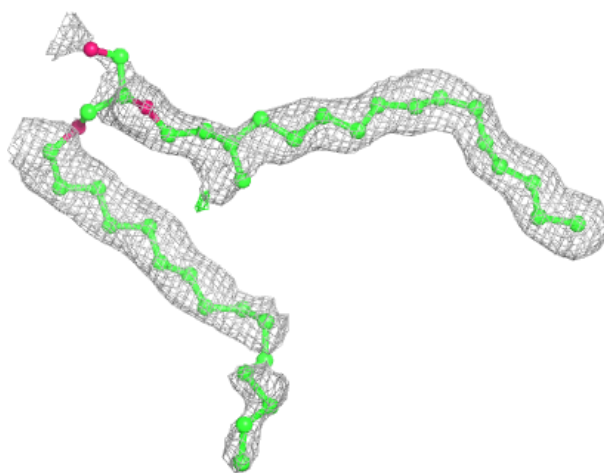
**Electron density around LI1 A 605:**

$2mF_o-DF_c$ (at 0.7 rmsd) in gray
 mF_o-DF_c (at 3 rmsd) in purple (negative)
and green (positive)



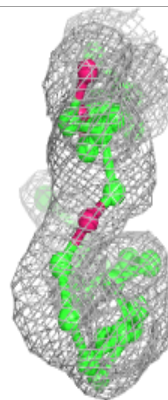
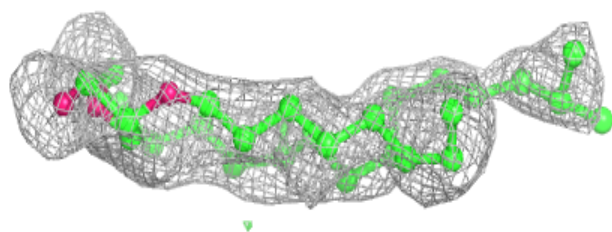
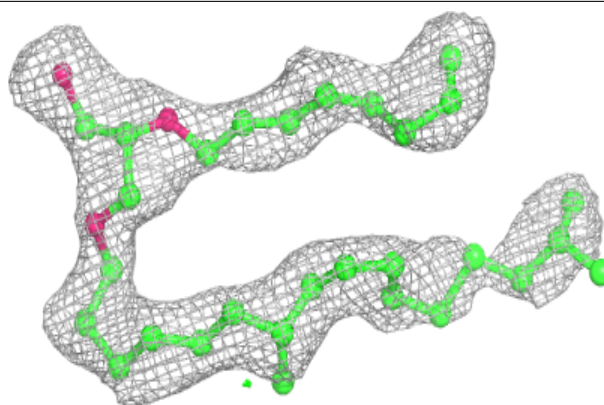
Electron density around LI1 A 607:

$2mF_o-DF_c$ (at 0.7 rmsd) in gray
 mF_o-DF_c (at 3 rmsd) in purple (negative)
and green (positive)

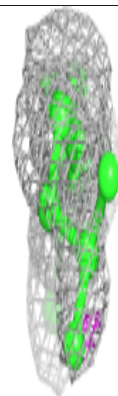
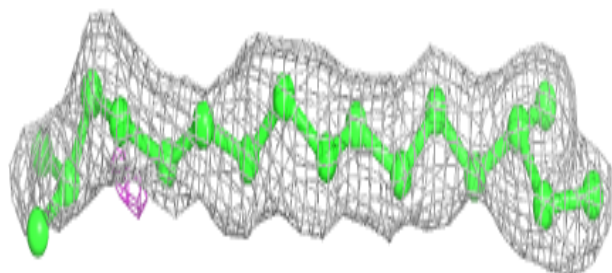
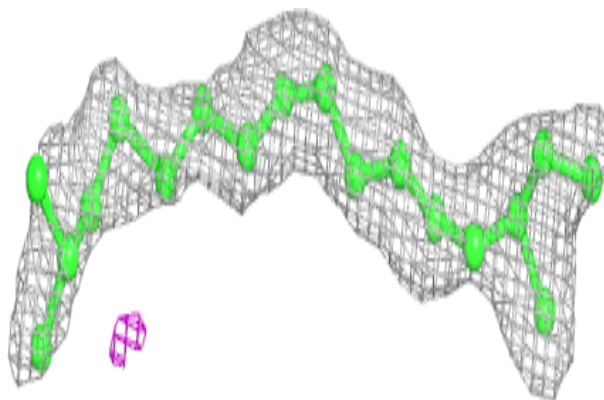


Electron density around LI1 A 601:

$2mF_o-DF_c$ (at 0.7 rmsd) in gray
 mF_o-DF_c (at 3 rmsd) in purple (negative)
and green (positive)

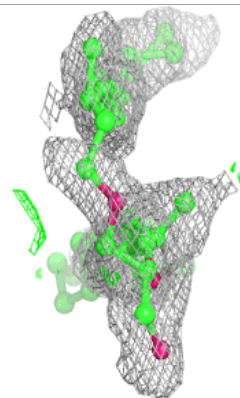
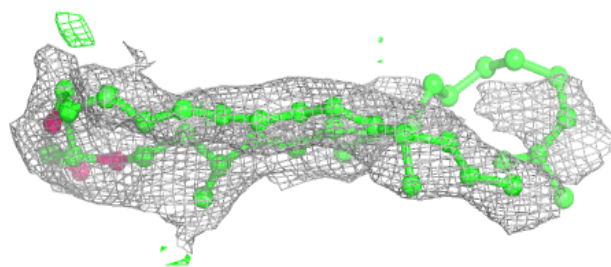
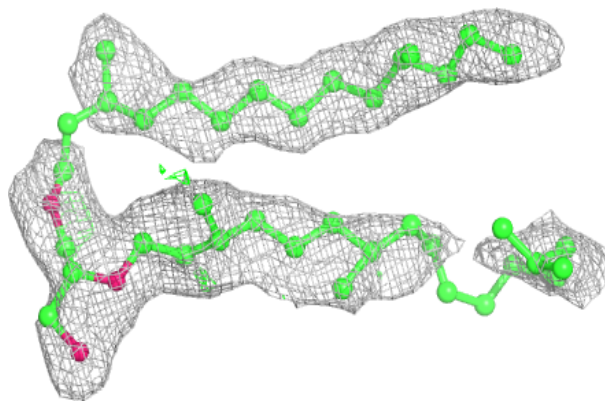
**Electron density around LI1 A 603:**

$2mF_o-DF_c$ (at 0.7 rmsd) in gray
 mF_o-DF_c (at 3 rmsd) in purple (negative)
and green (positive)

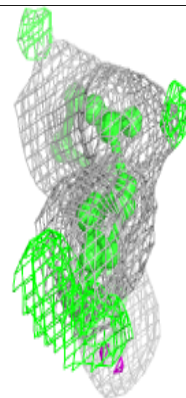
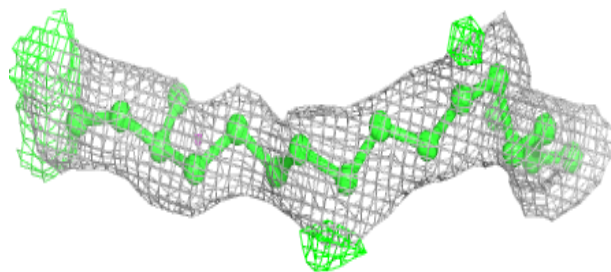
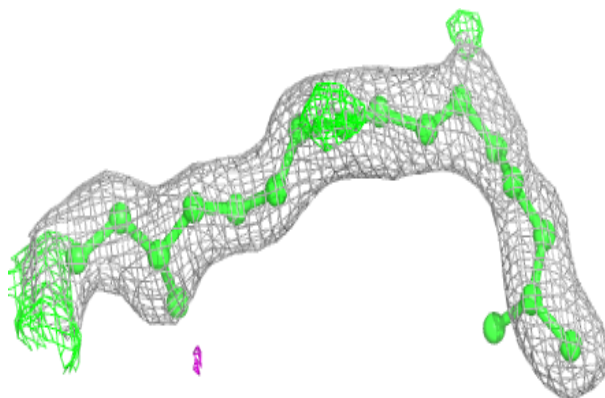


Electron density around LI1 A 602:

$2mF_o-DF_c$ (at 0.7 rmsd) in gray
 mF_o-DF_c (at 3 rmsd) in purple (negative)
and green (positive)

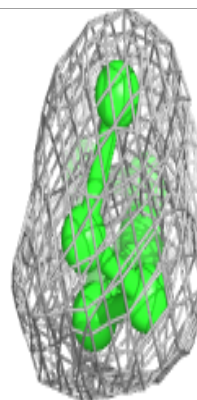
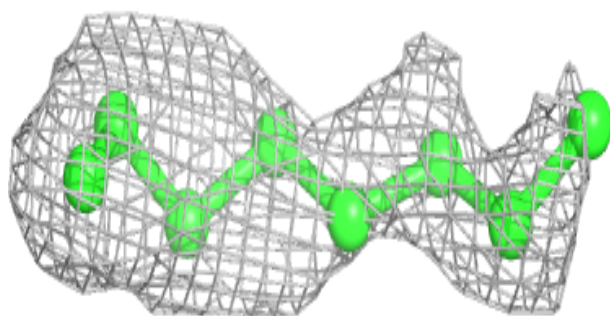
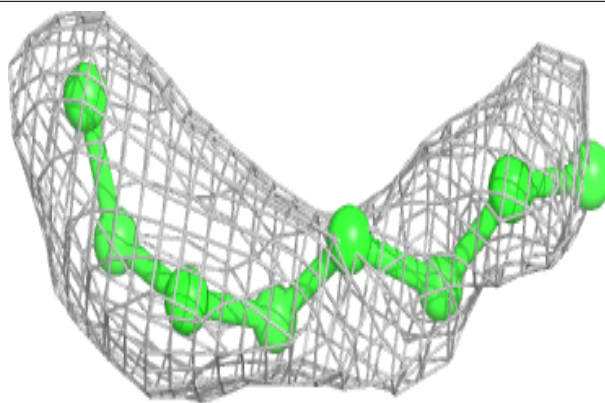
**Electron density around LI1 A 612:**

$2mF_o-DF_c$ (at 0.7 rmsd) in gray
 mF_o-DF_c (at 3 rmsd) in purple (negative)
and green (positive)

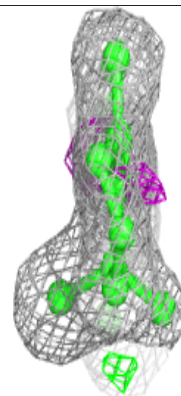
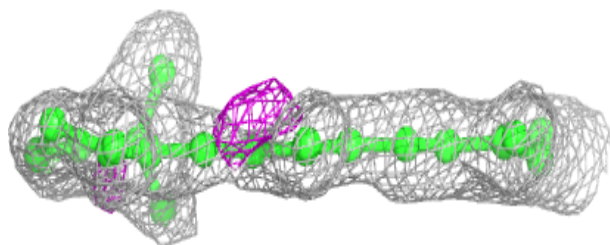
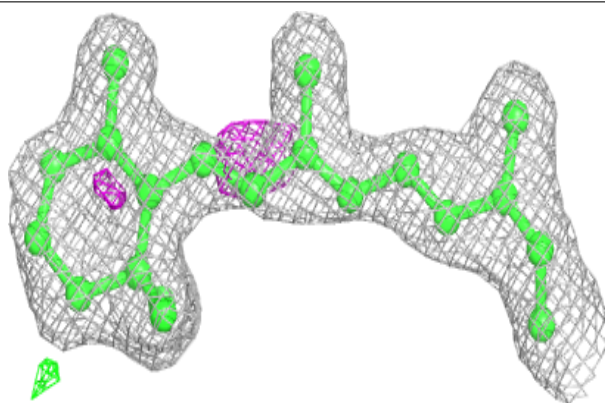


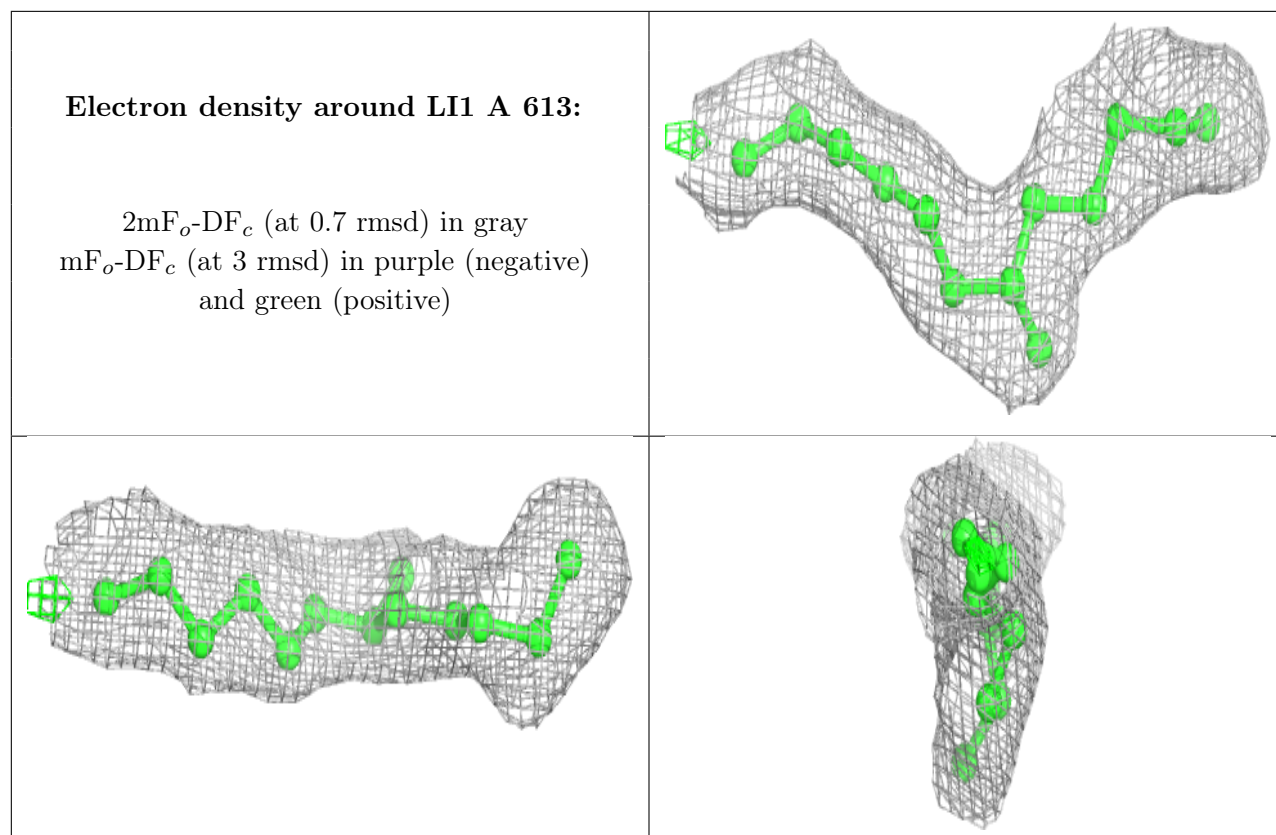
Electron density around LI1 A 606:

$2mF_o-DF_c$ (at 0.7 rmsd) in gray
 mF_o-DF_c (at 3 rmsd) in purple (negative)
and green (positive)

**Electron density around RET A 300:**

$2mF_o-DF_c$ (at 0.7 rmsd) in gray
 mF_o-DF_c (at 3 rmsd) in purple (negative)
and green (positive)





6.5 Other polymers [i](#)

There are no such residues in this entry.