



Full wwPDB X-ray Structure Validation Report ⓘ

Oct 11, 2021 – 01:05 PM EDT

PDB ID : 2HIM
Title : Crystal Structure and Allosteric Regulation of the Cytoplasmic Escherichia coli L-Asparaginase I
Authors : Yun, M.K.; Nourse, A.; White, S.W.; Rock, C.O.; Heath, R.J.
Deposited on : 2006-06-29
Resolution : 1.82 Å (reported)

This is a Full wwPDB X-ray Structure Validation Report for a publicly released PDB entry.

We welcome your comments at validation@mail.wwpdb.org

A user guide is available at

<https://www.wwpdb.org/validation/2017/XrayValidationReportHelp>

with specific help available everywhere you see the ⓘ symbol.

The following versions of software and data (see [references ⓘ](#)) were used in the production of this report:

MolProbity : 4.02b-467
Mogul : 1.8.5 (274361), CSD as541be (2020)
Xtriage (Phenix) : 1.13
EDS : 2.23.2
Percentile statistics : 20191225.v01 (using entries in the PDB archive December 25th 2019)
Refmac : 5.8.0158
CCP4 : 7.0.044 (Gargrove)
Ideal geometry (proteins) : Engh & Huber (2001)
Ideal geometry (DNA, RNA) : Parkinson et al. (1996)
Validation Pipeline (wwPDB-VP) : 2.23.2

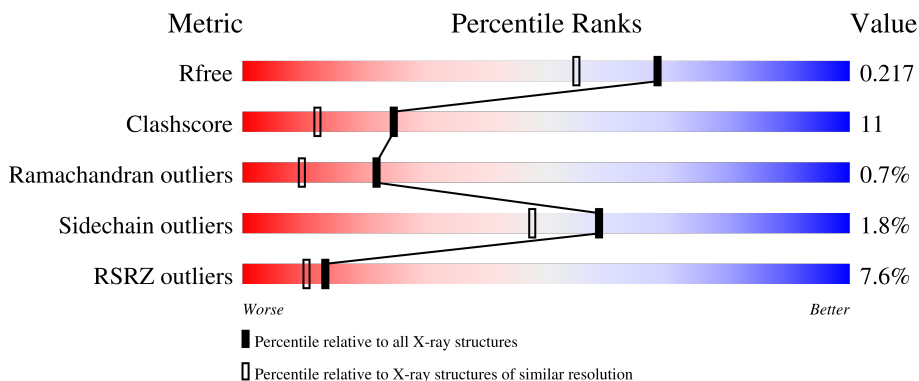
1 Overall quality at a glance

The following experimental techniques were used to determine the structure:

X-RAY DIFFRACTION

The reported resolution of this entry is 1.82 Å.

Percentile scores (ranging between 0-100) for global validation metrics of the entry are shown in the following graphic. The table shows the number of entries on which the scores are based.



Metric	Whole archive (#Entries)	Similar resolution (#Entries, resolution range(Å))
R_{free}	130704	7484 (1.84-1.80)
Clashscore	141614	8401 (1.84-1.80)
Ramachandran outliers	138981	8290 (1.84-1.80)
Sidechain outliers	138945	8290 (1.84-1.80)
RSRZ outliers	127900	7371 (1.84-1.80)

The table below summarises the geometric issues observed across the polymeric chains and their fit to the electron density. The red, orange, yellow and green segments of the lower bar indicate the fraction of residues that contain outliers for ≥ 3 , 2, 1 and 0 types of geometric quality criteria respectively. A grey segment represents the fraction of residues that are not modelled. The numeric value for each fraction is indicated below the corresponding segment, with a dot representing fractions $\leq 5\%$. The upper red bar (where present) indicates the fraction of residues that have poor fit to the electron density. The numeric value is given above the bar.

Mol	Chain	Length	Quality of chain
1	A	358	 8% 74% 15% • 9%
1	B	358	 6% 74% 17% • 8%
1	C	358	 9% 69% 20% • 9%
1	D	358	 4% 76% 15% • 8%

2 Entry composition [i](#)

There are 5 unique types of molecules in this entry. The entry contains 10664 atoms, of which 0 are hydrogens and 0 are deuteriums.

In the tables below, the ZeroOcc column contains the number of atoms modelled with zero occupancy, the AltConf column contains the number of residues with at least one atom in alternate conformation and the Trace column contains the number of residues modelled with at most 2 atoms.

- Molecule 1 is a protein called L-asparaginase 1.

Mol	Chain	Residues	Atoms					ZeroOcc	AltConf	Trace
			Total	C	N	O	S			
1	A	324	2475	1569	426	468	12	0	0	0
1	B	329	2518	1595	435	476	12	0	0	0
1	C	324	2489	1579	428	470	12	0	0	0
1	D	331	2531	1603	438	478	12	0	0	0

There are 84 discrepancies between the modelled and reference sequences:

Chain	Residue	Modelled	Actual	Comment	Reference
A	-19	MET	-	cloning artifact	UNP P0A962
A	-18	GLY	-	cloning artifact	UNP P0A962
A	-17	SER	-	cloning artifact	UNP P0A962
A	-16	SER	-	cloning artifact	UNP P0A962
A	-15	HIS	-	expression tag	UNP P0A962
A	-14	HIS	-	expression tag	UNP P0A962
A	-13	HIS	-	expression tag	UNP P0A962
A	-12	HIS	-	expression tag	UNP P0A962
A	-11	HIS	-	expression tag	UNP P0A962
A	-10	HIS	-	expression tag	UNP P0A962
A	-9	SER	-	cloning artifact	UNP P0A962
A	-8	SER	-	cloning artifact	UNP P0A962
A	-7	GLY	-	cloning artifact	UNP P0A962
A	-6	LEU	-	cloning artifact	UNP P0A962
A	-5	VAL	-	cloning artifact	UNP P0A962
A	-4	PRO	-	cloning artifact	UNP P0A962
A	-3	ARG	-	cloning artifact	UNP P0A962
A	-2	GLY	-	cloning artifact	UNP P0A962
A	-1	SER	-	cloning artifact	UNP P0A962
A	0	HIS	-	cloning artifact	UNP P0A962
A	162	ALA	THR	engineered mutation	UNP P0A962

Continued on next page...

Continued from previous page...

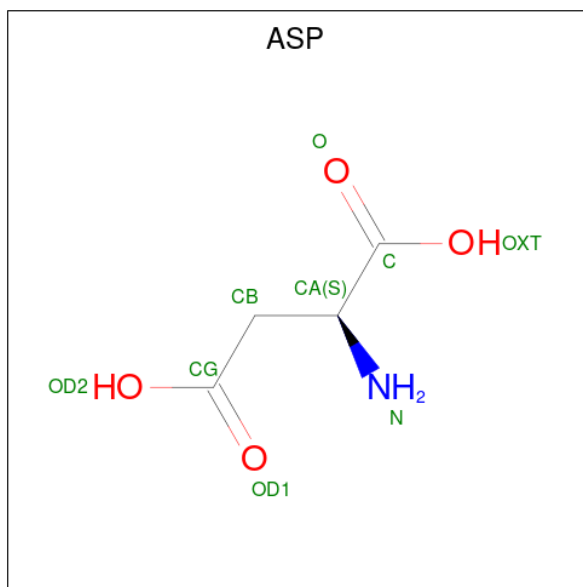
Chain	Residue	Modelled	Actual	Comment	Reference
B	-19	MET	-	cloning artifact	UNP P0A962
B	-18	GLY	-	cloning artifact	UNP P0A962
B	-17	SER	-	cloning artifact	UNP P0A962
B	-16	SER	-	cloning artifact	UNP P0A962
B	-15	HIS	-	expression tag	UNP P0A962
B	-14	HIS	-	expression tag	UNP P0A962
B	-13	HIS	-	expression tag	UNP P0A962
B	-12	HIS	-	expression tag	UNP P0A962
B	-11	HIS	-	expression tag	UNP P0A962
B	-10	HIS	-	expression tag	UNP P0A962
B	-9	SER	-	cloning artifact	UNP P0A962
B	-8	SER	-	cloning artifact	UNP P0A962
B	-7	GLY	-	cloning artifact	UNP P0A962
B	-6	LEU	-	cloning artifact	UNP P0A962
B	-5	VAL	-	cloning artifact	UNP P0A962
B	-4	PRO	-	cloning artifact	UNP P0A962
B	-3	ARG	-	cloning artifact	UNP P0A962
B	-2	GLY	-	cloning artifact	UNP P0A962
B	-1	SER	-	cloning artifact	UNP P0A962
B	0	HIS	-	cloning artifact	UNP P0A962
B	162	ALA	THR	engineered mutation	UNP P0A962
C	-19	MET	-	cloning artifact	UNP P0A962
C	-18	GLY	-	cloning artifact	UNP P0A962
C	-17	SER	-	cloning artifact	UNP P0A962
C	-16	SER	-	cloning artifact	UNP P0A962
C	-15	HIS	-	expression tag	UNP P0A962
C	-14	HIS	-	expression tag	UNP P0A962
C	-13	HIS	-	expression tag	UNP P0A962
C	-12	HIS	-	expression tag	UNP P0A962
C	-11	HIS	-	expression tag	UNP P0A962
C	-10	HIS	-	expression tag	UNP P0A962
C	-9	SER	-	cloning artifact	UNP P0A962
C	-8	SER	-	cloning artifact	UNP P0A962
C	-7	GLY	-	cloning artifact	UNP P0A962
C	-6	LEU	-	cloning artifact	UNP P0A962
C	-5	VAL	-	cloning artifact	UNP P0A962
C	-4	PRO	-	cloning artifact	UNP P0A962
C	-3	ARG	-	cloning artifact	UNP P0A962
C	-2	GLY	-	cloning artifact	UNP P0A962
C	-1	SER	-	cloning artifact	UNP P0A962
C	0	HIS	-	cloning artifact	UNP P0A962
C	162	ALA	THR	engineered mutation	UNP P0A962

Continued on next page...

Continued from previous page...

Chain	Residue	Modelled	Actual	Comment	Reference
D	-19	MET	-	cloning artifact	UNP P0A962
D	-18	GLY	-	cloning artifact	UNP P0A962
D	-17	SER	-	cloning artifact	UNP P0A962
D	-16	SER	-	cloning artifact	UNP P0A962
D	-15	HIS	-	expression tag	UNP P0A962
D	-14	HIS	-	expression tag	UNP P0A962
D	-13	HIS	-	expression tag	UNP P0A962
D	-12	HIS	-	expression tag	UNP P0A962
D	-11	HIS	-	expression tag	UNP P0A962
D	-10	HIS	-	expression tag	UNP P0A962
D	-9	SER	-	cloning artifact	UNP P0A962
D	-8	SER	-	cloning artifact	UNP P0A962
D	-7	GLY	-	cloning artifact	UNP P0A962
D	-6	LEU	-	cloning artifact	UNP P0A962
D	-5	VAL	-	cloning artifact	UNP P0A962
D	-4	PRO	-	cloning artifact	UNP P0A962
D	-3	ARG	-	cloning artifact	UNP P0A962
D	-2	GLY	-	cloning artifact	UNP P0A962
D	-1	SER	-	cloning artifact	UNP P0A962
D	0	HIS	-	cloning artifact	UNP P0A962
D	162	ALA	THR	engineered mutation	UNP P0A962

- Molecule 2 is ASPARTIC ACID (three-letter code: ASP) (formula: C₄H₇NO₄).



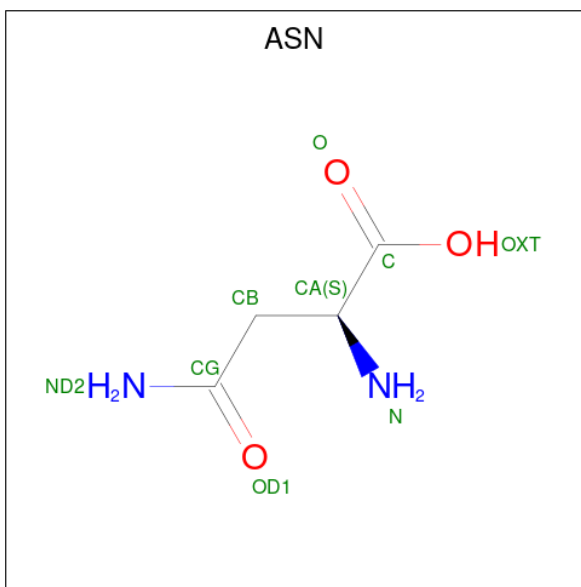
Mol	Chain	Residues	Atoms			ZeroOcc	AltConf	
			Total	C	N			O
2	A	1	8	4	1	3	0	1

Continued on next page...

Continued from previous page...

Mol	Chain	Residues	Atoms				ZeroOcc	AltConf
2	B	1	Total	C	N	O	0	1
			8	4	1	3		
2	C	1	Total	C	N	O	0	1
			8	4	1	3		
2	D	1	Total	C	N	O	0	1
			8	4	1	3		

- Molecule 3 is ASPARAGINE (three-letter code: ASN) (formula: $C_4H_8N_2O_3$).



Mol	Chain	Residues	Atoms				ZeroOcc	AltConf
3	A	1	Total	C	N	O	0	0
			9	4	2	3		
3	A	1	Total	C	N	O	0	1
			9	4	2	3		
3	B	1	Total	C	N	O	0	0
			9	4	2	3		
3	B	1	Total	C	N	O	0	1
			9	4	2	3		
3	C	1	Total	C	N	O	0	0
			9	4	2	3		
3	C	1	Total	C	N	O	0	1
			9	4	2	3		
3	D	1	Total	C	N	O	0	0
			9	4	2	3		
3	D	1	Total	C	N	O	0	1
			9	4	2	3		

- Molecule 4 is 1,2-ETHANEDIOL (three-letter code: EDO) (formula: C₂H₆O₂).



Mol	Chain	Residues	Atoms	ZeroOcc	AltConf
4	A	1	Total C O 4 2 2	0	0
4	A	1	Total C O 4 2 2	0	0
4	B	1	Total C O 4 2 2	0	0
4	B	1	Total C O 4 2 2	0	0
4	C	1	Total C O 4 2 2	0	0
4	C	1	Total C O 4 2 2	0	0
4	D	1	Total C O 4 2 2	0	0
4	D	1	Total C O 4 2 2	0	0

- Molecule 5 is water.

Mol	Chain	Residues	Atoms	ZeroOcc	AltConf
5	A	128	Total O 128 128	0	0
5	B	122	Total O 122 122	0	0
5	C	115	Total O 115 115	0	0

Continued on next page...

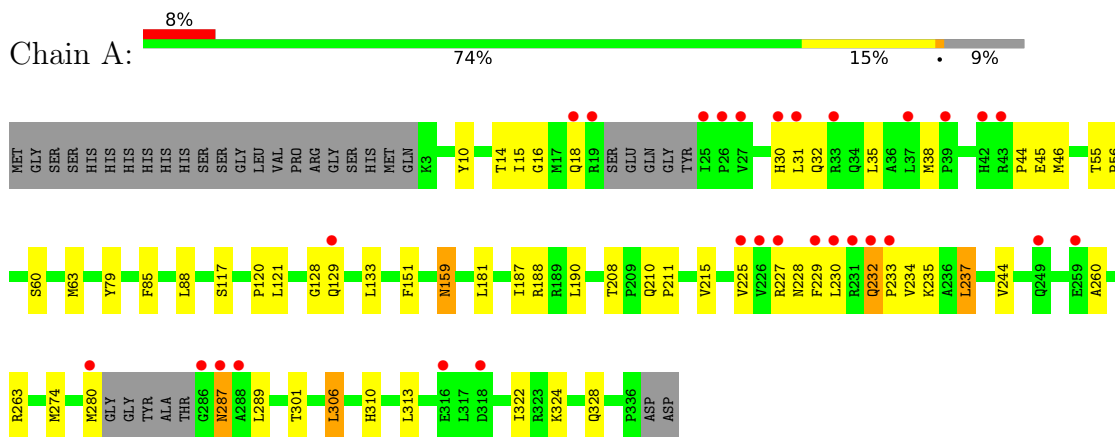
Continued from previous page...

Mol	Chain	Residues	Atoms		ZeroOcc	AltConf
5	D	150	Total 150	O 150	0	0

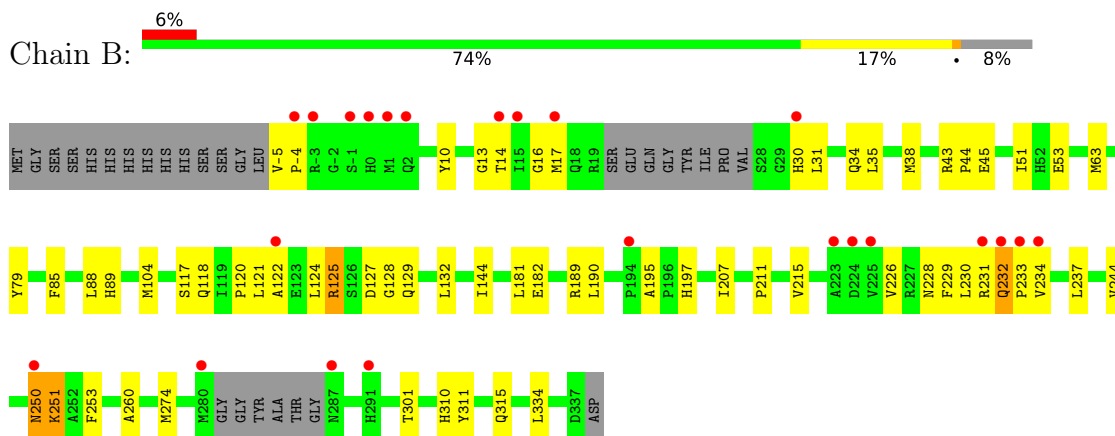
3 Residue-property plots [i](#)

These plots are drawn for all protein, RNA, DNA and oligosaccharide chains in the entry. The first graphic for a chain summarises the proportions of the various outlier classes displayed in the second graphic. The second graphic shows the sequence view annotated by issues in geometry and electron density. Residues are color-coded according to the number of geometric quality criteria for which they contain at least one outlier: green = 0, yellow = 1, orange = 2 and red = 3 or more. A red dot above a residue indicates a poor fit to the electron density ($RSRZ > 2$). Stretches of 2 or more consecutive residues without any outlier are shown as a green connector. Residues present in the sample, but not in the model, are shown in grey.

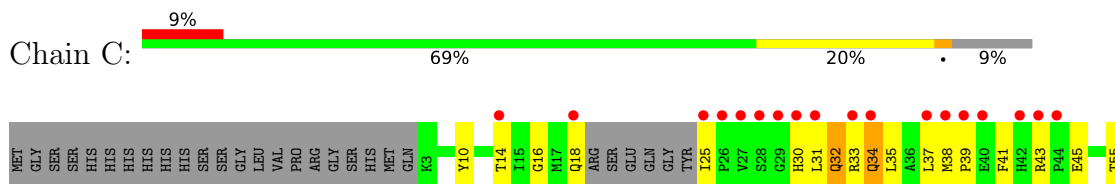
- Molecule 1: L-asparaginase 1

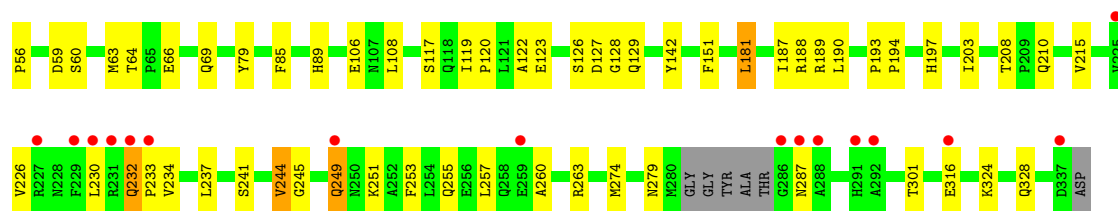


- Molecule 1: L-asparaginase 1

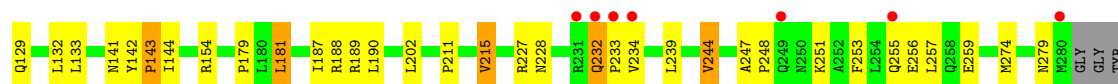
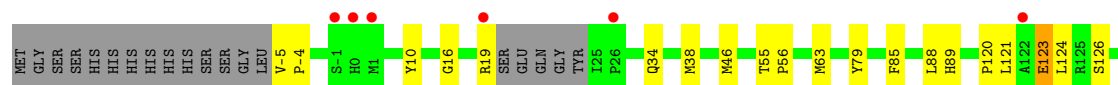
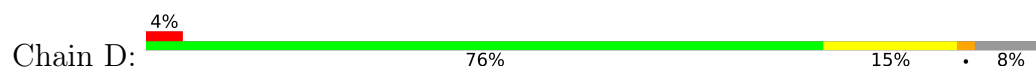


- Molecule 1: L-asparaginase 1





● Molecule 1: L-asparaginase 1



4 Data and refinement statistics

Property	Value	Source
Space group	P 1 21 1	Depositor
Cell constants a, b, c, α , β , γ	90.52Å 89.77Å 93.29Å 90.00° 117.14° 90.00°	Depositor
Resolution (Å)	50.00 – 1.82 46.54 – 1.74	Depositor EDS
% Data completeness (in resolution range)	96.7 (50.00-1.82) 93.9 (46.54-1.74)	Depositor EDS
R_{merge}	(Not available)	Depositor
R_{sym}	0.08	Depositor
$\langle I/\sigma(I) \rangle$ ¹	2.38 (at 1.74Å)	Xtrriage
Refinement program	CNS 1.1	Depositor
R, R_{free}	0.209 , 0.226 0.200 , 0.217	Depositor DCC
R_{free} test set	6685 reflections (5.05%)	wwPDB-VP
Wilson B-factor (Å ²)	19.7	Xtrriage
Anisotropy	0.124	Xtrriage
Bulk solvent k_{sol} (e/Å ³), B_{sol} (Å ²)	0.38 , 56.1	EDS
L-test for twinning ²	$\langle L \rangle = 0.49$, $\langle L^2 \rangle = 0.32$	Xtrriage
Estimated twinning fraction	0.015 for h,-k,-h-l	Xtrriage
F_o, F_c correlation	0.94	EDS
Total number of atoms	10664	wwPDB-VP
Average B, all atoms (Å ²)	26.0	wwPDB-VP

Xtrriage's analysis on translational NCS is as follows: *The largest off-origin peak in the Patterson function is 5.19% of the height of the origin peak. No significant pseudotranslation is detected.*

¹Intensities estimated from amplitudes.

²Theoretical values of $\langle |L| \rangle$, $\langle L^2 \rangle$ for acentric reflections are 0.5, 0.333 respectively for untwinned datasets, and 0.375, 0.2 for perfectly twinned datasets.

5 Model quality [i](#)

5.1 Standard geometry [i](#)

Bond lengths and bond angles in the following residue types are not validated in this section: EDO

The Z score for a bond length (or angle) is the number of standard deviations the observed value is removed from the expected value. A bond length (or angle) with $|Z| > 5$ is considered an outlier worth inspection. RMSZ is the root-mean-square of all Z scores of the bond lengths (or angles).

Mol	Chain	Bond lengths		Bond angles	
		RMSZ	# Z >5	RMSZ	# Z >5
1	A	0.31	0/2529	0.62	0/3443
1	B	0.30	0/2574	0.61	0/3504
1	C	0.30	0/2544	0.61	2/3463 (0.1%)
1	D	0.30	0/2587	0.62	1/3522 (0.0%)
All	All	0.30	0/10234	0.62	3/13932 (0.0%)

There are no bond length outliers.

All (3) bond angle outliers are listed below:

Mol	Chain	Res	Type	Atoms	Z	Observed(°)	Ideal(°)
1	C	181	LEU	CA-CB-CG	5.22	127.31	115.30
1	C	59	ASP	N-CA-C	-5.14	97.11	111.00
1	D	181	LEU	CA-CB-CG	5.09	127.00	115.30

There are no chirality outliers.

There are no planarity outliers.

5.2 Too-close contacts [i](#)

In the following table, the Non-H and H(model) columns list the number of non-hydrogen atoms and hydrogen atoms in the chain respectively. The H(added) column lists the number of hydrogen atoms added and optimized by MolProbity. The Clashes column lists the number of clashes within the asymmetric unit, whereas Symm-Clashes lists symmetry-related clashes.

Mol	Chain	Non-H	H(model)	H(added)	Clashes	Symm-Clashes
1	A	2475	0	2431	57	0
1	B	2518	0	2470	56	0
1	C	2489	0	2456	62	0
1	D	2531	0	2485	49	0

Continued on next page...

Continued from previous page...

Mol	Chain	Non-H	H(model)	H(added)	Clashes	Symm-Clashes
2	A	8	0	3	0	0
2	B	8	0	3	0	0
2	C	8	0	3	0	0
2	D	8	0	3	0	0
3	A	18	0	10	0	0
3	B	18	0	10	1	0
3	C	18	0	10	0	0
3	D	18	0	10	0	0
4	A	8	0	10	2	0
4	B	8	0	10	2	0
4	C	8	0	10	2	0
4	D	8	0	10	1	0
5	A	128	0	0	1	0
5	B	122	0	0	1	0
5	C	115	0	0	0	0
5	D	150	0	0	1	0
All	All	10664	0	9934	217	0

The all-atom clashscore is defined as the number of clashes found per 1000 atoms (including hydrogen atoms). The all-atom clashscore for this structure is 11.

All (217) close contacts within the same asymmetric unit are listed below, sorted by their clash magnitude.

Atom-1	Atom-2	Interatomic distance (Å)	Clash overlap (Å)
1:C:230:LEU:HD11	1:C:260:ALA:HA	1.44	0.99
1:D:121:LEU:HD12	1:D:129:GLN:HE21	1.31	0.93
1:C:32:GLN:H	1:C:32:GLN:NE2	1.72	0.87
1:C:32:GLN:H	1:C:32:GLN:HE21	1.22	0.84
1:D:19:ARG:HH22	1:D:120:PRO:HG2	1.43	0.83
1:B:181:LEU:HD11	1:B:189:ARG:HG2	1.60	0.82
1:D:232:GLN:H	1:D:233:PRO:HD2	1.44	0.81
1:C:41:PHE:HE2	1:C:129:GLN:HG3	1.46	0.80
1:B:44:PRO:HG2	1:B:45:GLU:OE2	1.83	0.77
1:C:108:LEU:O	1:C:197:HIS:HE1	1.69	0.75
1:D:19:ARG:NH2	1:D:120:PRO:HG2	2.03	0.73
1:B:182:GLU:HG3	1:B:190:LEU:HD11	1.71	0.72
1:C:232:GLN:H	1:C:233:PRO:HD2	1.54	0.72
1:B:251:LYS:HB2	1:B:251:LYS:NZ	2.05	0.71
1:C:41:PHE:CE2	1:C:129:GLN:HG3	2.26	0.70
1:D:232:GLN:H	1:D:233:PRO:CD	2.08	0.67
1:A:232:GLN:H	1:A:233:PRO:HD2	1.59	0.67

Continued on next page...

Continued from previous page...

Atom-1	Atom-2	Interatomic distance (Å)	Clash overlap (Å)
1:A:234:VAL:HG11	1:A:237:LEU:HD23	1.75	0.67
1:A:35:LEU:HA	1:A:38:MET:HE3	1.76	0.66
1:B:229:PHE:HB3	1:B:234:VAL:HG21	1.77	0.66
1:B:-5:VAL:O	1:B:189:ARG:HD2	1.94	0.66
1:B:228:ASN:HB3	1:D:228:ASN:HD21	1.57	0.66
1:B:14:THR:HG23	1:B:120:PRO:HG3	1.76	0.66
1:A:188:ARG:HH12	1:A:190:LEU:HD21	1.60	0.66
1:C:230:LEU:HD12	1:C:263:ARG:HD3	1.78	0.66
1:A:18:GLN:HE21	1:A:30:HIS:HD2	1.43	0.65
1:A:15:ILE:HD11	1:A:88:LEU:HB3	1.79	0.64
1:D:211:PRO:HB2	1:D:233:PRO:C	2.18	0.63
1:A:15:ILE:HG22	1:A:117:SER:OG	1.98	0.63
1:B:43:ARG:HE	1:B:43:ARG:HA	1.65	0.62
1:C:25:ILE:HD12	1:C:25:ILE:N	2.15	0.62
1:A:188:ARG:HG2	1:A:188:ARG:HH11	1.65	0.62
1:C:215:VAL:HG23	1:C:237:LEU:HD11	1.81	0.61
1:A:188:ARG:NH1	1:A:190:LEU:HD21	2.16	0.61
1:B:215:VAL:CG2	1:B:237:LEU:HD21	2.31	0.61
1:B:250:ASN:HD22	1:B:251:LYS:N	1.99	0.61
1:A:35:LEU:HD23	1:A:38:MET:HE3	1.83	0.60
1:C:230:LEU:HD21	1:C:260:ALA:HB2	1.83	0.60
1:A:232:GLN:N	1:A:233:PRO:HD2	2.15	0.60
1:A:225:VAL:HA	1:A:228:ASN:HD22	1.67	0.60
1:D:121:LEU:HD11	1:D:129:GLN:HG3	1.83	0.60
1:A:15:ILE:CD1	1:A:88:LEU:HB3	2.31	0.59
1:A:18:GLN:HE21	1:A:30:HIS:CD2	2.21	0.58
1:C:31:LEU:O	1:C:35:LEU:HD23	2.04	0.58
1:B:10:TYR:OH	1:B:16:GLY:HA3	2.02	0.58
1:C:45:GLU:HB2	1:D:124:LEU:HD22	1.86	0.58
1:B:274:MET:CE	1:D:274:MET:HB2	2.33	0.57
1:C:253:PHE:HE1	1:C:257:LEU:HD11	1.69	0.57
1:B:211:PRO:HB2	1:B:233:PRO:C	2.25	0.57
1:C:316:GLU:CD	1:C:316:GLU:H	2.08	0.57
1:D:-5:VAL:CB	1:D:189:ARG:HG2	2.35	0.57
1:C:120:PRO:HG2	1:C:123:GLU:HG3	1.86	0.56
1:B:181:LEU:HD12	1:B:189:ARG:HA	1.86	0.56
1:C:226:VAL:O	1:C:230:LEU:HD23	2.05	0.56
1:D:179:PRO:O	1:D:190:LEU:HD12	2.05	0.56
1:A:230:LEU:HA	1:A:263:ARG:HH12	1.70	0.56
1:B:226:VAL:O	1:B:230:LEU:HG	2.06	0.56
1:D:188:ARG:NH1	1:D:188:ARG:HB3	2.21	0.56

Continued on next page...

Continued from previous page...

Atom-1	Atom-2	Interatomic distance (Å)	Clash overlap (Å)
1:A:301:THR:HA	4:A:9002:EDO:H12	1.87	0.56
1:C:43:ARG:HD2	1:D:124:LEU:HD13	1.88	0.56
1:C:251:LYS:O	1:C:255:GLN:HG3	2.06	0.56
1:B:232:GLN:H	1:B:233:PRO:HD2	1.71	0.56
1:C:232:GLN:H	1:C:233:PRO:CD	2.17	0.56
1:B:-4:PRO:HD2	1:B:144:ILE:HG12	1.88	0.55
1:B:274:MET:HE3	1:D:274:MET:HB2	1.87	0.55
1:B:30:HIS:O	1:B:34:GLN:HG2	2.07	0.55
1:B:250:ASN:HB3	1:B:253:PHE:CB	2.36	0.55
1:A:229:PHE:HB3	1:A:234:VAL:HG21	1.89	0.55
1:B:250:ASN:HB3	1:B:253:PHE:HB2	1.89	0.55
1:B:311:TYR:O	1:B:315:GLN:HG2	2.07	0.55
1:C:215:VAL:CG2	1:C:237:LEU:HD11	2.37	0.54
1:D:88:LEU:HD21	1:D:132:LEU:HD13	1.90	0.54
1:C:120:PRO:HG2	1:C:123:GLU:CG	2.38	0.54
1:D:211:PRO:HB2	1:D:233:PRO:O	2.07	0.54
1:C:142:TYR:HB3	1:C:189:ARG:HE	1.73	0.54
1:D:324:LYS:O	1:D:328:GLN:HG3	2.07	0.54
1:D:215:VAL:HG13	1:D:239:LEU:HD23	1.89	0.53
1:C:33:ARG:O	1:C:37:LEU:HD13	2.09	0.53
1:D:141:ASN:C	1:D:143:PRO:HD3	2.28	0.53
1:B:181:LEU:CD1	1:B:189:ARG:HG2	2.35	0.53
1:D:142:TYR:N	1:D:143:PRO:HD3	2.23	0.53
1:A:181:LEU:HD21	1:A:187:ILE:HG23	1.91	0.52
1:A:15:ILE:HG23	5:A:5035:HOH:O	2.09	0.52
1:C:10:TYR:OH	1:C:16:GLY:HA3	2.09	0.52
1:A:159:ASN:C	1:A:159:ASN:HD22	2.13	0.52
1:B:301:THR:HA	4:B:9004:EDO:H21	1.92	0.52
1:D:181:LEU:HD21	1:D:187:ILE:HG23	1.92	0.52
1:D:310:HIS:HD2	5:D:5300:HOH:O	1.92	0.51
1:A:227:ARG:O	1:A:230:LEU:HB2	2.10	0.51
1:D:227:ARG:HB2	1:D:256:GLU:OE1	2.10	0.51
1:C:45:GLU:N	1:C:45:GLU:OE1	2.44	0.51
1:B:230:LEU:HD21	1:B:260:ALA:HB2	1.93	0.51
1:B:35:LEU:HD12	1:B:51:ILE:HD11	1.93	0.51
1:B:215:VAL:HG23	1:B:237:LEU:HD21	1.93	0.51
1:C:35:LEU:HA	1:C:38:MET:HE2	1.92	0.51
1:D:247:ALA:HB1	1:D:248:PRO:HD2	1.93	0.51
1:A:188:ARG:NH1	1:A:190:LEU:CD2	2.74	0.50
1:D:232:GLN:N	1:D:233:PRO:CD	2.74	0.50
1:C:14:THR:HG23	1:C:120:PRO:HD3	1.93	0.50

Continued on next page...

Continued from previous page...

Atom-1	Atom-2	Interatomic distance (Å)	Clash overlap (Å)
1:A:230:LEU:CA	1:A:263:ARG:HH12	2.24	0.50
1:C:14:THR:O	1:C:120:PRO:HB3	2.11	0.49
1:A:230:LEU:HD21	1:A:260:ALA:HB2	1.94	0.49
1:C:66:GLU:O	1:C:69:GLN:HB3	2.13	0.49
1:D:188:ARG:HH11	1:D:188:ARG:CB	2.24	0.48
1:A:121:LEU:HD21	1:A:129:GLN:HB3	1.95	0.48
1:A:274:MET:HE3	1:C:274:MET:HB2	1.95	0.48
1:B:14:THR:HA	1:B:17:MET:SD	2.54	0.48
1:C:32:GLN:HE21	1:C:32:GLN:N	2.00	0.48
1:C:181:LEU:HD21	1:C:187:ILE:HG23	1.95	0.48
1:C:253:PHE:CE1	1:C:257:LEU:HD11	2.47	0.48
1:C:301:THR:HA	4:C:9001:EDO:H12	1.94	0.48
1:D:79:TYR:HA	1:D:85:PHE:CZ	2.49	0.48
1:D:-4:PRO:HD2	1:D:144:ILE:HG12	1.95	0.48
1:C:324:LYS:O	1:C:328:GLN:HG3	2.13	0.47
1:D:34:GLN:O	1:D:38:MET:HG3	2.14	0.47
1:A:230:LEU:HD22	1:A:263:ARG:HH11	1.79	0.47
1:A:233:PRO:O	1:A:234:VAL:HG23	2.14	0.47
1:A:188:ARG:HH11	1:A:188:ARG:CG	2.28	0.47
1:B:207:ILE:HG23	1:B:310:HIS:HB3	1.96	0.47
1:B:251:LYS:HB2	1:B:251:LYS:HZ3	1.75	0.47
4:B:9006:EDO:H12	1:D:244:VAL:HG13	1.97	0.47
1:D:79:TYR:HA	1:D:85:PHE:HZ	1.80	0.47
1:A:18:GLN:NE2	1:A:30:HIS:HD2	2.10	0.47
1:A:306:LEU:HD22	1:A:310:HIS:HD2	1.80	0.47
1:C:241:SER:OG	1:C:245:GLY:HA2	2.15	0.47
1:A:230:LEU:O	1:A:263:ARG:NH1	2.47	0.47
1:B:104:MET:HG2	1:B:207:ILE:HG13	1.97	0.46
1:A:280:MET:HB3	1:A:287:ASN:HD21	1.80	0.46
1:D:251:LYS:O	1:D:255:GLN:HG3	2.14	0.46
1:A:244:VAL:HG13	4:C:9007:EDO:H12	1.97	0.46
1:D:215:VAL:CG1	1:D:239:LEU:HD23	2.45	0.46
1:B:79:TYR:HA	1:B:85:PHE:CZ	2.51	0.46
1:B:250:ASN:ND2	1:B:251:LYS:N	2.64	0.46
1:C:64:THR:OG1	1:C:66:GLU:HG2	2.16	0.46
1:C:106:GLU:HB3	1:C:203:ILE:HB	1.96	0.46
1:B:31:LEU:C	1:B:31:LEU:HD13	2.35	0.46
1:B:229:PHE:C	1:B:231:ARG:H	2.19	0.46
1:A:14:THR:HG23	1:A:120:PRO:HG3	1.96	0.46
1:C:234:VAL:HG13	1:C:234:VAL:O	2.17	0.46
1:A:15:ILE:HG22	1:A:117:SER:CB	2.45	0.45

Continued on next page...

Continued from previous page...

Atom-1	Atom-2	Interatomic distance (Å)	Clash overlap (Å)
1:A:227:ARG:HA	1:A:230:LEU:HD12	1.98	0.45
1:A:274:MET:CE	1:C:274:MET:HB2	2.46	0.45
1:B:88:LEU:HD21	1:B:132:LEU:HD13	1.99	0.45
1:D:301:THR:HA	4:D:9003:EDO:H21	1.98	0.45
1:A:31:LEU:C	1:A:31:LEU:HD13	2.36	0.45
1:B:117:SER:HB3	1:B:128:GLY:HA2	1.99	0.45
1:B:250:ASN:HD22	1:B:251:LYS:H	1.65	0.45
1:C:230:LEU:HD11	1:C:260:ALA:CA	2.31	0.45
1:A:215:VAL:HG13	1:A:237:LEU:HD11	1.99	0.45
1:C:190:LEU:HD12	1:C:190:LEU:N	2.31	0.45
1:C:34:GLN:O	1:C:38:MET:HE2	2.17	0.45
1:A:117:SER:HB3	1:A:128:GLY:HA2	1.98	0.45
1:B:124:LEU:O	1:B:125:ARG:HB2	2.16	0.45
1:C:232:GLN:N	1:C:233:PRO:CD	2.80	0.45
1:C:14:THR:CG2	1:C:120:PRO:HD3	2.47	0.44
1:A:232:GLN:N	1:A:233:PRO:CD	2.80	0.44
1:D:255:GLN:O	1:D:259:GLU:HG3	2.16	0.44
1:D:253:PHE:CE1	1:D:257:LEU:HD11	2.53	0.44
1:B:251:LYS:HB2	1:B:251:LYS:HZ2	1.81	0.44
1:D:126:SER:HB3	1:D:129:GLN:HE22	1.83	0.44
1:A:313:LEU:HD23	1:A:322:ILE:HD13	1.99	0.44
1:A:306:LEU:HD22	1:A:310:HIS:CD2	2.52	0.44
1:B:334:LEU:HD12	1:B:334:LEU:C	2.38	0.44
1:D:-5:VAL:CB	1:D:144:ILE:HD11	2.48	0.44
1:A:44:PRO:HG2	1:A:45:GLU:OE1	2.18	0.44
1:B:34:GLN:O	1:B:38:MET:HG3	2.18	0.44
1:B:30:HIS:CE1	1:B:122:ALA:HB2	2.53	0.43
1:B:79:TYR:HA	1:B:85:PHE:HZ	1.83	0.43
1:A:79:TYR:HA	1:A:85:PHE:CZ	2.52	0.43
1:C:189:ARG:NH1	1:C:189:ARG:HG3	2.33	0.43
1:B:232:GLN:N	1:B:233:PRO:HD2	2.33	0.43
1:B:190:LEU:N	1:B:190:LEU:HD12	2.33	0.43
1:B:195:ALA:O	1:B:197:HIS:ND1	2.51	0.43
1:D:63:MET:SD	1:D:89:HIS:NE2	2.92	0.43
1:C:127:ASP:OD2	1:C:127:ASP:N	2.51	0.43
1:A:211:PRO:HG2	1:A:235:LYS:HG3	2.01	0.43
1:D:154:ARG:HH21	1:D:154:ARG:HG3	1.84	0.43
1:C:117:SER:HB3	1:C:128:GLY:HA2	2.00	0.43
1:C:34:GLN:OE1	1:C:122:ALA:HA	2.18	0.42
1:A:15:ILE:HG13	1:A:16:GLY:N	2.34	0.42
4:A:9005:EDO:H12	1:C:244:VAL:HG13	2.01	0.42

Continued on next page...

Continued from previous page...

Atom-1	Atom-2	Interatomic distance (Å)	Clash overlap (Å)
1:B:250:ASN:HB3	1:B:253:PHE:HB3	2.00	0.42
1:D:55:THR:HA	1:D:56:PRO:HA	1.84	0.42
1:A:32:GLN:OE1	1:A:32:GLN:N	2.48	0.42
1:D:10:TYR:HA	1:D:88:LEU:HB2	2.02	0.42
1:C:60:SER:HB2	1:C:89:HIS:CE1	2.55	0.42
1:C:119:ILE:HB	1:C:126:SER:HA	2.02	0.41
1:A:46:MET:CE	1:A:133:LEU:HD22	2.50	0.41
1:C:208:THR:O	1:C:210:GLN:HG2	2.20	0.41
1:D:233:PRO:O	1:D:234:VAL:HG23	2.20	0.41
1:C:79:TYR:HA	1:C:85:PHE:CZ	2.56	0.41
1:A:230:LEU:HA	1:A:263:ARG:NH1	2.35	0.41
1:B:13:GLY:HA2	3:B:6002[B]:ASN:OXT	2.21	0.41
1:B:127:ASP:OD2	1:B:127:ASP:N	2.48	0.41
1:D:10:TYR:OH	1:D:16:GLY:HA3	2.21	0.41
1:A:60:SER:HA	1:A:63:MET:HG2	2.03	0.41
1:A:208:THR:O	1:A:210:GLN:HG2	2.21	0.41
1:A:55:THR:HA	1:A:56:PRO:HA	1.86	0.41
1:B:118:GLN:HA	5:B:5513:HOH:O	2.20	0.41
1:C:38:MET:HA	1:C:39:PRO:HD2	1.95	0.41
1:C:55:THR:HA	1:C:56:PRO:HA	1.92	0.41
1:D:19:ARG:HD3	1:D:123:GLU:OE1	2.21	0.41
1:D:46:MET:CE	1:D:133:LEU:HD22	2.51	0.41
1:C:193:PRO:HA	1:C:194:PRO:HD3	1.93	0.41
1:A:10:TYR:HA	1:A:88:LEU:HB2	2.03	0.40
1:A:324:LYS:O	1:A:328:GLN:HG3	2.21	0.40
1:B:10:TYR:HB3	1:B:53:GLU:HA	2.02	0.40
1:B:121:LEU:HD11	1:B:129:GLN:CG	2.52	0.40
1:C:25:ILE:N	1:C:25:ILE:CD1	2.83	0.40
1:D:123:GLU:OE2	1:D:123:GLU:N	2.43	0.40
1:A:18:GLN:NE2	1:A:30:HIS:CD2	2.88	0.40
1:B:63:MET:SD	1:B:89:HIS:NE2	2.95	0.40
1:C:18:GLN:HE21	1:C:30:HIS:CD2	2.39	0.40
1:C:60:SER:HA	1:C:63:MET:HG2	2.03	0.40
1:C:249:GLN:CA	1:C:249:GLN:HE21	2.35	0.40
1:B:215:VAL:HG21	1:B:237:LEU:HD21	2.03	0.40
1:D:312:LEU:HD12	1:D:326:MET:SD	2.62	0.40

There are no symmetry-related clashes.

5.3 Torsion angles [i](#)

5.3.1 Protein backbone [i](#)

In the following table, the Percentiles column shows the percent Ramachandran outliers of the chain as a percentile score with respect to all X-ray entries followed by that with respect to entries of similar resolution.

The Analysed column shows the number of residues for which the backbone conformation was analysed, and the total number of residues.

Mol	Chain	Analysed	Favoured	Allowed	Outliers	Percentiles	
1	A	318/358 (89%)	307 (96%)	10 (3%)	1 (0%)	41	27
1	B	323/358 (90%)	312 (97%)	9 (3%)	2 (1%)	25	12
1	C	318/358 (89%)	307 (96%)	9 (3%)	2 (1%)	25	12
1	D	325/358 (91%)	314 (97%)	7 (2%)	4 (1%)	13	3
All	All	1284/1432 (90%)	1240 (97%)	35 (3%)	9 (1%)	22	10

All (9) Ramachandran outliers are listed below:

Mol	Chain	Res	Type
1	A	232	GLN
1	B	232	GLN
1	C	232	GLN
1	D	123	GLU
1	D	232	GLN
1	D	143	PRO
1	B	244	VAL
1	D	244	VAL
1	C	244	VAL

5.3.2 Protein sidechains [i](#)

In the following table, the Percentiles column shows the percent sidechain outliers of the chain as a percentile score with respect to all X-ray entries followed by that with respect to entries of similar resolution.

The Analysed column shows the number of residues for which the sidechain conformation was analysed, and the total number of residues.

Mol	Chain	Analysed	Rotameric	Outliers	Percentiles	
1	A	263/297 (89%)	257 (98%)	6 (2%)	50	37
1	B	268/297 (90%)	265 (99%)	3 (1%)	73	67

Continued on next page...

Continued from previous page...

Mol	Chain	Analysed	Rotameric	Outliers	Percentiles	
1	C	267/297 (90%)	260 (97%)	7 (3%)	46	32
1	D	269/297 (91%)	266 (99%)	3 (1%)	73	67
All	All	1067/1188 (90%)	1048 (98%)	19 (2%)	59	48

All (19) residues with a non-rotameric sidechain are listed below:

Mol	Chain	Res	Type
1	A	151	PHE
1	A	159	ASN
1	A	237	LEU
1	A	287	ASN
1	A	289	LEU
1	A	306	LEU
1	B	125	ARG
1	B	250	ASN
1	B	251	LYS
1	C	32	GLN
1	C	34	GLN
1	C	151	PHE
1	C	188	ARG
1	C	249	GLN
1	C	279	ASN
1	C	287	ASN
1	D	202	LEU
1	D	215	VAL
1	D	279	ASN

Sometimes sidechains can be flipped to improve hydrogen bonding and reduce clashes. All (31) such sidechains are listed below:

Mol	Chain	Res	Type
1	A	30	HIS
1	A	34	GLN
1	A	159	ASN
1	A	205	HIS
1	A	228	ASN
1	A	279	ASN
1	A	287	ASN
1	A	328	GLN
1	B	18	GLN
1	B	30	HIS

Continued on next page...

Continued from previous page...

Mol	Chain	Res	Type
1	B	32	GLN
1	B	134	ASN
1	B	145	ASN
1	B	250	ASN
1	B	258	GLN
1	C	18	GLN
1	C	32	GLN
1	C	197	HIS
1	C	205	HIS
1	C	249	GLN
1	C	279	ASN
1	C	287	ASN
1	D	129	GLN
1	D	134	ASN
1	D	145	ASN
1	D	152	ASN
1	D	228	ASN
1	D	255	GLN
1	D	279	ASN
1	D	310	HIS
1	D	315	GLN

5.3.3 RNA [i](#)

There are no RNA molecules in this entry.

5.4 Non-standard residues in protein, DNA, RNA chains [i](#)

There are no non-standard protein/DNA/RNA residues in this entry.

5.5 Carbohydrates [i](#)

There are no monosaccharides in this entry.

5.6 Ligand geometry [i](#)

20 ligands are modelled in this entry.

In the following table, the Counts columns list the number of bonds (or angles) for which Mogul statistics could be retrieved, the number of bonds (or angles) that are observed in the model and the number of bonds (or angles) that are defined in the Chemical Component Dictionary. The

Link column lists molecule types, if any, to which the group is linked. The Z score for a bond length (or angle) is the number of standard deviations the observed value is removed from the expected value. A bond length (or angle) with $|Z| > 2$ is considered an outlier worth inspection. RMSZ is the root-mean-square of all Z scores of the bond lengths (or angles).

Mol	Type	Chain	Res	Link	Bond lengths			Bond angles		
					Counts	RMSZ	# Z > 2	Counts	RMSZ	# Z > 2
3	ASN	C	8003	-	5,8,8	1.23	1 (20%)	5,10,10	1.34	1 (20%)
4	EDO	A	9005	-	3,3,3	1.90	1 (33%)	2,2,2	0.25	0
2	ASP	A	7001[A]	1	4,7,8	2.04	2 (50%)	2,8,10	0.85	0
4	EDO	D	9003	-	3,3,3	2.05	1 (33%)	2,2,2	0.35	0
4	EDO	C	9001	-	3,3,3	1.98	1 (33%)	2,2,2	0.31	0
2	ASP	C	7003[A]	1	4,7,8	1.87	1 (25%)	2,8,10	0.89	0
3	ASN	D	8004	-	5,8,8	1.26	1 (20%)	5,10,10	1.41	1 (20%)
3	ASN	A	6001[B]	-	5,8,8	1.29	1 (20%)	5,10,10	2.16	1 (20%)
3	ASN	B	8002	-	5,8,8	1.32	1 (20%)	5,10,10	1.50	1 (20%)
3	ASN	A	8001	-	5,8,8	1.29	1 (20%)	5,10,10	1.42	1 (20%)
4	EDO	B	9004	-	3,3,3	2.06	1 (33%)	2,2,2	0.36	0
4	EDO	D	9008	-	3,3,3	1.93	1 (33%)	2,2,2	0.24	0
3	ASN	B	6002[B]	-	5,8,8	1.29	1 (20%)	5,10,10	2.11	1 (20%)
2	ASP	B	7002[A]	1	4,7,8	2.40	2 (50%)	2,8,10	0.95	0
4	EDO	A	9002	-	3,3,3	1.99	1 (33%)	2,2,2	0.33	0
3	ASN	C	6003[B]	-	5,8,8	1.29	1 (20%)	5,10,10	2.13	2 (40%)
3	ASN	D	6004[B]	-	5,8,8	1.42	1 (20%)	5,10,10	1.78	1 (20%)
4	EDO	C	9007	-	3,3,3	1.95	1 (33%)	2,2,2	0.27	0
2	ASP	D	7004[A]	1	4,7,8	2.48	1 (25%)	2,8,10	1.10	0
4	EDO	B	9006	-	3,3,3	1.93	1 (33%)	2,2,2	0.27	0

In the following table, the Chirals column lists the number of chiral outliers, the number of chiral centers analysed, the number of these observed in the model and the number defined in the Chemical Component Dictionary. Similar counts are reported in the Torsion and Rings columns. '2' means no outliers of that kind were identified.

Mol	Type	Chain	Res	Link	Chirals	Torsions	Rings
3	ASN	C	8003	-	-	0/4/8/8	-
4	EDO	A	9005	-	-	0/1/1/1	-
2	ASP	A	7001[A]	1	-	1/3/7/8	-
4	EDO	D	9003	-	-	0/1/1/1	-
4	EDO	C	9001	-	-	0/1/1/1	-
2	ASP	C	7003[A]	1	-	1/3/7/8	-

Continued on next page...

Continued from previous page...

Mol	Type	Chain	Res	Link	Chirals	Torsions	Rings
3	ASN	D	8004	-	-	0/4/8/8	-
3	ASN	A	6001[B]	-	-	0/4/8/8	-
3	ASN	B	8002	-	-	0/4/8/8	-
3	ASN	A	8001	-	-	0/4/8/8	-
4	EDO	B	9004	-	-	0/1/1/1	-
4	EDO	D	9008	-	-	0/1/1/1	-
3	ASN	B	6002[B]	-	-	0/4/8/8	-
2	ASP	B	7002[A]	1	-	1/3/7/8	-
4	EDO	A	9002	-	-	0/1/1/1	-
3	ASN	C	6003[B]	-	-	0/4/8/8	-
3	ASN	D	6004[B]	-	-	0/4/8/8	-
4	EDO	C	9007	-	-	0/1/1/1	-
2	ASP	D	7004[A]	1	-	1/3/7/8	-
4	EDO	B	9006	-	-	0/1/1/1	-

All (22) bond length outliers are listed below:

Mol	Chain	Res	Type	Atoms	Z	Observed(Å)	Ideal(Å)
2	D	7004[A]	ASP	CB-CG	4.29	1.60	1.49
2	B	7002[A]	ASP	CB-CG	3.90	1.59	1.49
4	B	9004	EDO	O2-C2	-3.51	1.24	1.42
4	D	9003	EDO	O2-C2	-3.48	1.24	1.42
4	A	9002	EDO	O2-C2	-3.36	1.24	1.42
4	C	9001	EDO	O2-C2	-3.35	1.24	1.42
4	C	9007	EDO	O2-C2	-3.29	1.25	1.42
2	A	7001[A]	ASP	CB-CG	3.26	1.58	1.49
4	B	9006	EDO	O2-C2	-3.24	1.25	1.42
4	D	9008	EDO	O2-C2	-3.22	1.25	1.42
4	A	9005	EDO	O2-C2	-3.18	1.25	1.42
2	C	7003[A]	ASP	CB-CG	3.06	1.57	1.49
3	D	6004[B]	ASN	CB-CG	2.48	1.58	1.51
2	B	7002[A]	ASP	CA-N	-2.43	1.41	1.47
3	A	6001[B]	ASN	CB-CG	2.38	1.58	1.51
3	B	6002[B]	ASN	CB-CG	2.36	1.58	1.51
3	D	8004	ASN	CB-CG	2.35	1.58	1.51
3	B	8002	ASN	CB-CG	2.31	1.58	1.51
3	C	8003	ASN	CB-CG	2.31	1.58	1.51
3	A	8001	ASN	CB-CG	2.31	1.58	1.51
3	C	6003[B]	ASN	CB-CG	2.27	1.57	1.51
2	A	7001[A]	ASP	CA-N	-2.11	1.42	1.47

All (9) bond angle outliers are listed below:

Mol	Chain	Res	Type	Atoms	Z	Observed(°)	Ideal(°)
3	A	6001[B]	ASN	CA-CB-CG	4.41	121.01	112.24
3	C	6003[B]	ASN	CA-CB-CG	4.24	120.67	112.24
3	B	6002[B]	ASN	CA-CB-CG	4.23	120.66	112.24
3	D	6004[B]	ASN	CA-CB-CG	3.43	119.07	112.24
3	B	8002	ASN	CA-CB-CG	2.64	117.48	112.24
3	A	8001	ASN	CA-CB-CG	2.58	117.37	112.24
3	D	8004	ASN	CA-CB-CG	2.54	117.30	112.24
3	C	8003	ASN	CA-CB-CG	2.48	117.18	112.24
3	C	6003[B]	ASN	CB-CA-C	2.05	114.01	110.69

There are no chirality outliers.

All (4) torsion outliers are listed below:

Mol	Chain	Res	Type	Atoms
2	C	7003[A]	ASP	CA-CB-CG-OD1
2	A	7001[A]	ASP	CA-CB-CG-OD1
2	B	7002[A]	ASP	CA-CB-CG-OD1
2	D	7004[A]	ASP	CA-CB-CG-OD1

There are no ring outliers.

8 monomers are involved in 8 short contacts:

Mol	Chain	Res	Type	Clashes	Symm-Clashes
4	A	9005	EDO	1	0
4	D	9003	EDO	1	0
4	C	9001	EDO	1	0
4	B	9004	EDO	1	0
3	B	6002[B]	ASN	1	0
4	A	9002	EDO	1	0
4	C	9007	EDO	1	0
4	B	9006	EDO	1	0

5.7 Other polymers [i](#)

There are no such residues in this entry.

5.8 Polymer linkage issues [i](#)

There are no chain breaks in this entry.

6 Fit of model and data

6.1 Protein, DNA and RNA chains

In the following table, the column labelled ‘#RSRZ > 2’ contains the number (and percentage) of RSRZ outliers, followed by percent RSRZ outliers for the chain as percentile scores relative to all X-ray entries and entries of similar resolution. The OWAB column contains the minimum, median, 95th percentile and maximum values of the occupancy-weighted average B-factor per residue. The column labelled ‘Q < 0.9’ lists the number of (and percentage) of residues with an average occupancy less than 0.9.

Mol	Chain	Analysed	<RSRZ>	#RSRZ>2	OWAB(Å ²)	Q<0.9
1	A	324/358 (90%)	0.35	29 (8%) 9 7	13, 23, 49, 58	0
1	B	329/358 (91%)	0.15	23 (6%) 16 13	14, 22, 46, 57	0
1	C	324/358 (90%)	0.39	34 (10%) 6 4	13, 24, 52, 58	0
1	D	331/358 (92%)	0.03	13 (3%) 39 34	13, 21, 44, 57	0
All	All	1308/1432 (91%)	0.23	99 (7%) 13 10	13, 22, 49, 58	0

All (99) RSRZ outliers are listed below:

Mol	Chain	Res	Type	RSRZ
1	B	233	PRO	12.4
1	D	233	PRO	10.7
1	C	39	PRO	8.9
1	A	233	PRO	8.6
1	A	39	PRO	7.1
1	A	26	PRO	6.9
1	C	25	ILE	6.5
1	C	37	LEU	6.3
1	C	26	PRO	5.6
1	A	37	LEU	5.3
1	C	233	PRO	5.2
1	C	287	ASN	4.8
1	B	2	GLN	4.8
1	C	42	HIS	4.7
1	C	30	HIS	4.6
1	C	286	GLY	4.6
1	D	280	MET	4.4
1	C	230	LEU	4.4
1	A	42	HIS	4.3
1	A	230	LEU	4.2
1	C	291	HIS	4.1

Continued on next page...

Continued from previous page...

Mol	Chain	Res	Type	RSRZ
1	A	249	GLN	4.0
1	B	231	ARG	4.0
1	C	288	ALA	4.0
1	A	231	ARG	3.9
1	B	234	VAL	3.9
1	C	231	ARG	3.8
1	B	232	GLN	3.8
1	A	316	GLU	3.7
1	A	286	GLY	3.7
1	C	44	PRO	3.7
1	A	227	ARG	3.7
1	A	25	ILE	3.7
1	C	33	ARG	3.6
1	D	26	PRO	3.5
1	C	232	GLN	3.4
1	D	19	ARG	3.4
1	D	231	ARG	3.3
1	A	229	PHE	3.3
1	C	225	VAL	3.3
1	D	249	GLN	3.2
1	B	0	HIS	3.2
1	C	229	PHE	3.2
1	A	33	ARG	3.1
1	B	194	PRO	3.1
1	C	337	ASP	3.1
1	A	30	HIS	3.0
1	C	31	LEU	3.0
1	B	291	HIS	3.0
1	A	19	ARG	3.0
1	B	225	VAL	3.0
1	D	122	ALA	2.9
1	B	15	ILE	2.9
1	B	122	ALA	2.9
1	B	30	HIS	2.9
1	D	232	GLN	2.9
1	D	1	MET	2.8
1	A	288	ALA	2.8
1	A	226	VAL	2.8
1	C	18	GLN	2.7
1	A	18	GLN	2.7
1	A	280	MET	2.7
1	A	43	ARG	2.7

Continued on next page...

Continued from previous page...

Mol	Chain	Res	Type	RSRZ
1	B	17	MET	2.7
1	C	29	GLY	2.7
1	B	224	ASP	2.6
1	C	227	ARG	2.6
1	D	234	VAL	2.6
1	D	0	HIS	2.6
1	B	-3	ARG	2.6
1	C	316	GLU	2.6
1	C	43	ARG	2.5
1	B	280	MET	2.5
1	A	287	ASN	2.5
1	C	28	SER	2.5
1	C	34	GLN	2.5
1	A	129	GLN	2.4
1	B	1	MET	2.4
1	C	27	VAL	2.4
1	A	259	GLU	2.4
1	A	225	VAL	2.4
1	D	-1	SER	2.3
1	B	-4	PRO	2.3
1	C	249	GLN	2.3
1	B	250	ASN	2.3
1	C	292	ALA	2.3
1	C	259	GLU	2.3
1	B	14	THR	2.3
1	B	223	ALA	2.3
1	B	287	ASN	2.2
1	C	14	THR	2.2
1	A	318	ASP	2.1
1	C	40	GLU	2.1
1	A	31	LEU	2.1
1	C	38	MET	2.1
1	A	27	VAL	2.1
1	D	255	GLN	2.0
1	A	232	GLN	2.0
1	B	-1	SER	2.0

6.2 Non-standard residues in protein, DNA, RNA chains

There are no non-standard protein/DNA/RNA residues in this entry.

6.3 Carbohydrates [i](#)

There are no monosaccharides in this entry.

6.4 Ligands [i](#)

In the following table, the Atoms column lists the number of modelled atoms in the group and the number defined in the chemical component dictionary. The B-factors column lists the minimum, median, 95th percentile and maximum values of B factors of atoms in the group. The column labelled 'Q< 0.9' lists the number of atoms with occupancy less than 0.9.

Mol	Type	Chain	Res	Atoms	RSCC	RSR	B-factors(Å ²)	Q<0.9
2	ASP	B	7002[A]	8/9	0.73	0.17	14,25,26,27	8
2	ASP	A	7001[A]	8/9	0.79	0.16	8,23,24,24	8
3	ASN	A	6001[B]	9/9	0.80	0.16	14,17,18,20	9
4	EDO	B	9006	4/4	0.80	0.17	28,28,31,31	0
3	ASN	C	6003[B]	9/9	0.82	0.17	14,16,18,19	9
2	ASP	D	7004[A]	8/9	0.82	0.15	8,19,20,22	8
3	ASN	D	6004[B]	9/9	0.84	0.15	12,16,17,18	9
3	ASN	B	6002[B]	9/9	0.85	0.15	20,22,24,24	9
2	ASP	C	7003[A]	8/9	0.85	0.17	8,20,21,22	8
4	EDO	D	9008	4/4	0.86	0.13	22,24,25,27	0
3	ASN	A	8001	9/9	0.88	0.14	17,21,23,25	0
3	ASN	C	8003	9/9	0.88	0.15	19,21,23,26	0
4	EDO	A	9005	4/4	0.89	0.15	22,23,26,27	0
4	EDO	C	9007	4/4	0.91	0.13	23,27,28,28	0
3	ASN	D	8004	9/9	0.92	0.11	19,20,23,23	0
4	EDO	A	9002	4/4	0.94	0.12	21,23,24,25	0
3	ASN	B	8002	9/9	0.94	0.08	17,22,24,26	0
4	EDO	B	9004	4/4	0.94	0.13	25,25,26,28	0
4	EDO	C	9001	4/4	0.97	0.10	20,20,22,24	0
4	EDO	D	9003	4/4	0.98	0.10	25,25,26,26	0

6.5 Other polymers [i](#)

There are no such residues in this entry.