



Full wwPDB EM Validation Report ⓘ

Nov 19, 2022 – 09:55 AM EST

PDB ID : 2GO5
EMDB ID : EMD-1217
Title : Structure of signal recognition particle receptor (SR) in complex with signal recognition particle (SRP) and ribosome nascent chain complex
Authors : Halic, M.; Gartmann, M.; Schlenker, O.; Mielke, T.; Pool, M.R.; Sinning, I.; Beckmann, R.
Deposited on : 2006-04-12
Resolution : 7.40 Å(reported)

This is a Full wwPDB EM Validation Report for a publicly released PDB entry.

We welcome your comments at validation@mail.wwpdb.org

A user guide is available at

<https://www.wwpdb.org/validation/2017/EMValidationReportHelp>

with specific help available everywhere you see the ⓘ symbol.

The types of validation reports are described at

<http://www.wwpdb.org/validation/2017/FAQs#types>.

The following versions of software and data (see [references ⓘ](#)) were used in the production of this report:

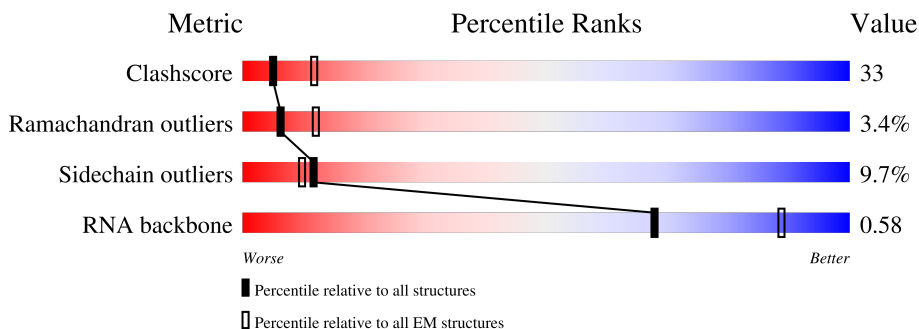
EMDB validation analysis : 0.0.1.dev43
MolProbity : 4.02b-467
Percentile statistics : 20191225.v01 (using entries in the PDB archive December 25th 2019)
MapQ : 1.9.9
Ideal geometry (proteins) : Engh & Huber (2001)
Ideal geometry (DNA, RNA) : Parkinson et al. (1996)
Validation Pipeline (wwPDB-VP) : 2.31.3

1 Overall quality at a glance i

The following experimental techniques were used to determine the structure:
ELECTRON MICROSCOPY

The reported resolution of this entry is 7.40 Å.

Percentile scores (ranging between 0-100) for global validation metrics of the entry are shown in the following graphic. The table shows the number of entries on which the scores are based.



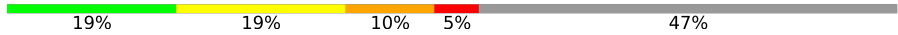
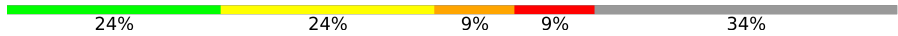
Metric	Whole archive (#Entries)	EM structures (#Entries)
Clashscore	158937	4297
Ramachandran outliers	154571	4023
Sidechain outliers	154315	3826
RNA backbone	4643	859

The table below summarises the geometric issues observed across the polymeric chains and their fit to the map. The red, orange, yellow and green segments of the bar indicate the fraction of residues that contain outliers for ≥ 3 , 2, 1 and 0 types of geometric quality criteria respectively. A grey segment represents the fraction of residues that are not modelled. The numeric value for each fraction is indicated below the corresponding segment, with a dot representing fractions $\leq 5\%$. The upper red bar (where present) indicates the fraction of residues that have poor fit to the EM map (all-atom inclusion $< 40\%$). The numeric value is given above the bar.

Mol	Chain	Length	Quality of chain
1	A	127	<div style="display: flex; justify-content: space-between;"> <div style="width: 20%; border-bottom: 2px solid red;"></div> <div style="width: 33%; border-bottom: 2px solid green;"></div> <div style="width: 53%; border-bottom: 2px solid yellow;"></div> <div style="width: 14%; border-bottom: 2px solid orange;"></div> </div>
2	9	90	<div style="display: flex; justify-content: space-between;"> <div style="width: 28%; border-bottom: 2px solid green;"></div> <div style="width: 58%; border-bottom: 2px solid yellow;"></div> <div style="width: 13%; border-bottom: 2px solid orange;"></div> </div>
3	B	108	<div style="display: flex; justify-content: space-between;"> <div style="width: 49%; border-bottom: 2px solid red;"></div> <div style="width: 41%; border-bottom: 2px solid green;"></div> <div style="width: 50%; border-bottom: 2px solid yellow;"></div> <div style="width: 7%; border-bottom: 2px solid orange;"></div> </div>
4	W	109	<div style="display: flex; justify-content: space-between;"> <div style="width: 44%; border-bottom: 2px solid red;"></div> <div style="width: 69%; border-bottom: 2px solid green;"></div> <div style="width: 24%; border-bottom: 2px solid yellow;"></div> </div>
5	1	185	<div style="display: flex; justify-content: space-between;"> <div style="width: 52%; border-bottom: 2px solid green;"></div> <div style="width: 14%; border-bottom: 2px solid yellow;"></div> <div style="width: 32%; border-bottom: 2px solid grey;"></div> </div>
6	2	214	<div style="display: flex; justify-content: space-between;"> <div style="width: 63%; border-bottom: 2px solid red;"></div> <div style="width: 71%; border-bottom: 2px solid green;"></div> <div style="width: 16%; border-bottom: 2px solid yellow;"></div> <div style="width: 12%; border-bottom: 2px solid grey;"></div> </div>
7	5	124	<div style="display: flex; justify-content: space-between;"> <div style="width: 19%; border-bottom: 2px solid green;"></div> <div style="width: 23%; border-bottom: 2px solid yellow;"></div> <div style="width: 5%; border-bottom: 2px solid red;"></div> <div style="width: 48%; border-bottom: 2px solid grey;"></div> </div>

Continued on next page...

Continued from previous page...

Mol	Chain	Length	Quality of chain
8	4	152	 19% 19% 10% 5% 47%
9	6	123	 24% 24% 9% 9% 34%

2 Entry composition i

There are 9 unique types of molecules in this entry. The entry contains 10724 atoms, of which 0 are hydrogens and 0 are deuteriums.

In the tables below, the AltConf column contains the number of residues with at least one atom in alternate conformation and the Trace column contains the number of residues modelled with at most 2 atoms.

- Molecule 1 is a RNA chain called SRP RNA.

Mol	Chain	Residues	Atoms					AltConf	Trace
			Total	C	N	O	P		
1	A	127	2728	1217	508	877	126	0	0

- Molecule 2 is a RNA chain called ribosomal RNA.

Mol	Chain	Residues	Atoms					AltConf	Trace
			Total	C	N	O	P		
2	9	90	1935	863	364	618	90	0	0

- Molecule 3 is a protein called Signal recognition particle 19 kDa protein (SRP19).

Mol	Chain	Residues	Atoms					AltConf	Trace
			Total	C	N	O	S		
3	B	107	870	549	159	156	6	0	0

- Molecule 4 is a protein called Signal recognition particle 54 kDa protein (SRP54).

Mol	Chain	Residues	Atoms					AltConf	Trace
			Total	C	N	O	S		
4	W	109	865	540	150	164	11	0	0

- Molecule 5 is a protein called Signal recognition particle receptor alpha subunit (SR a).

Mol	Chain	Residues	Atoms					AltConf	Trace
			Total	C	N	O	S		
5	1	125	1020	659	169	189	3	0	0

There are 11 discrepancies between the modelled and reference sequences:

Chain	Residue	Modelled	Actual	Comment	Reference
1	-8	MET	-	CLONING ARTIFACT	UNP P08240
1	-7	SER	-	CLONING ARTIFACT	UNP P08240
1	-6	HIS	-	EXPRESSION TAG	UNP P08240

Continued on next page...

Continued from previous page...

Chain	Residue	Modelled	Actual	Comment	Reference
1	-5	HIS	-	EXPRESSION TAG	UNP P08240
1	-4	HIS	-	EXPRESSION TAG	UNP P08240
1	-3	HIS	-	EXPRESSION TAG	UNP P08240
1	-2	HIS	-	EXPRESSION TAG	UNP P08240
1	-1	HIS	-	EXPRESSION TAG	UNP P08240
1	0	SER	-	CLONING ARTIFACT	UNP P08240
1	1	MET	-	CLONING ARTIFACT	UNP P08240
1	2	VAL	-	CLONING ARTIFACT	UNP P08240

- Molecule 6 is a protein called Signal recognition particle receptor beta subunit (SR b).

Mol	Chain	Residues	Atoms				AltConf	Trace	
			Total	C	N	O			S
6	2	188	1479	940	256	278	5	0	0

There are 2 discrepancies between the modelled and reference sequences:

Chain	Residue	Modelled	Actual	Comment	Reference
2	56	MET	-	INITIATING METHIONINE	UNP P47758
2	57	ALA	-	CLONING ARTIFACT	UNP P47758

- Molecule 7 is a protein called ribosomal protein L35.

Mol	Chain	Residues	Atoms				AltConf	Trace
			Total	C	N	O		
7	5	64	504	314	99	91	0	0

- Molecule 8 is a protein called ribosomal protein L23.

Mol	Chain	Residues	Atoms				AltConf	Trace	
			Total	C	N	O			S
8	4	81	652	423	108	119	2	0	0

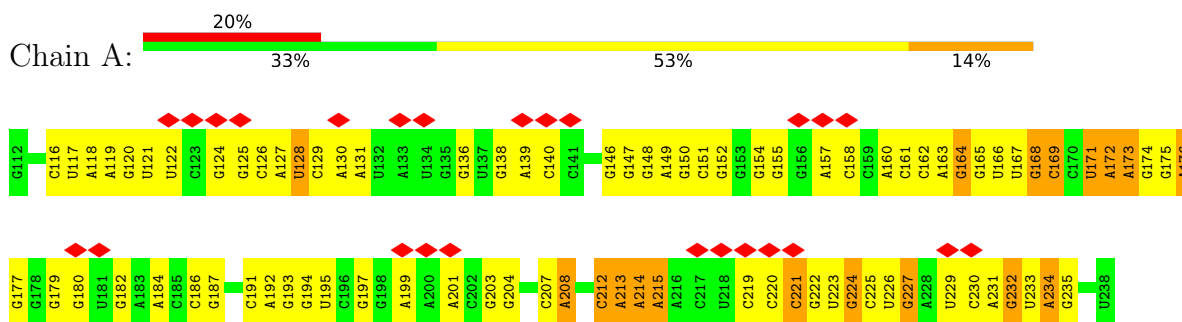
- Molecule 9 is a protein called ribosomal protein L31.

Mol	Chain	Residues	Atoms				AltConf	Trace	
			Total	C	N	O			S
9	6	81	671	416	138	115	2	0	0

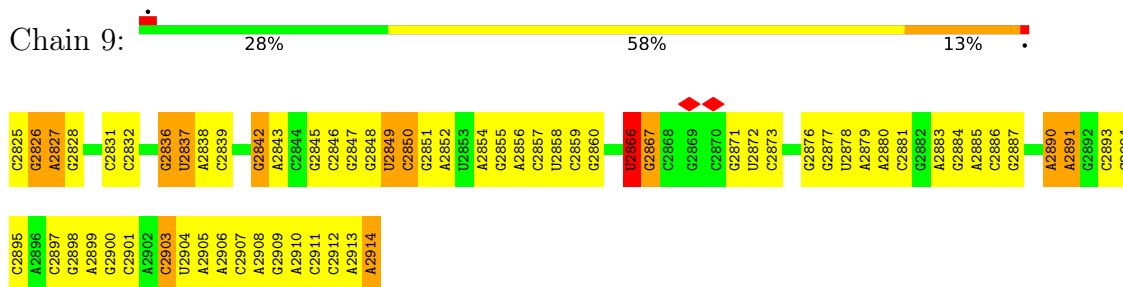
3 Residue-property plots

These plots are drawn for all protein, RNA, DNA and oligosaccharide chains in the entry. The first graphic for a chain summarises the proportions of the various outlier classes displayed in the second graphic. The second graphic shows the sequence view annotated by issues in geometry and atom inclusion in map density. Residues are color-coded according to the number of geometric quality criteria for which they contain at least one outlier: green = 0, yellow = 1, orange = 2 and red = 3 or more. A red diamond above a residue indicates a poor fit to the EM map for this residue (all-atom inclusion < 40%). Stretches of 2 or more consecutive residues without any outlier are shown as a green connector. Residues present in the sample, but not in the model, are shown in grey.

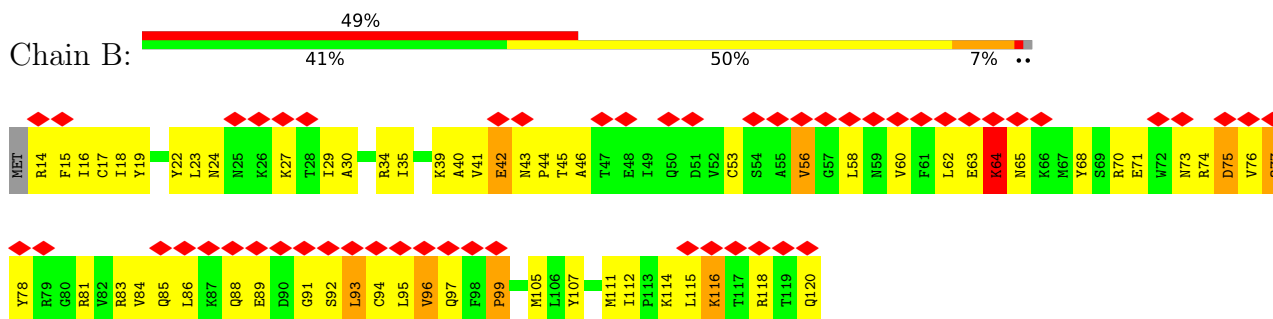
- Molecule 1: SRP RNA



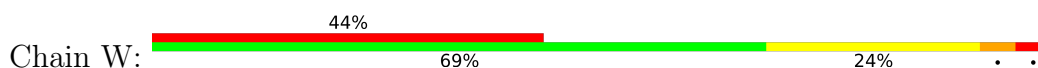
- Molecule 2: ribosomal RNA



- Molecule 3: Signal recognition particle 19 kDa protein (SRP19)

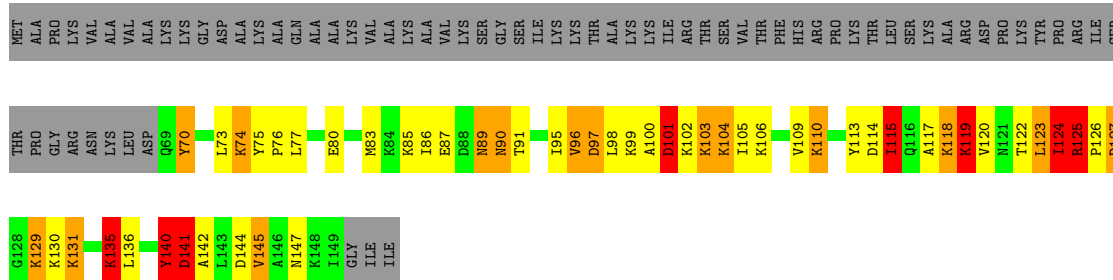


- Molecule 4: Signal recognition particle 54 kDa protein (SRP54)



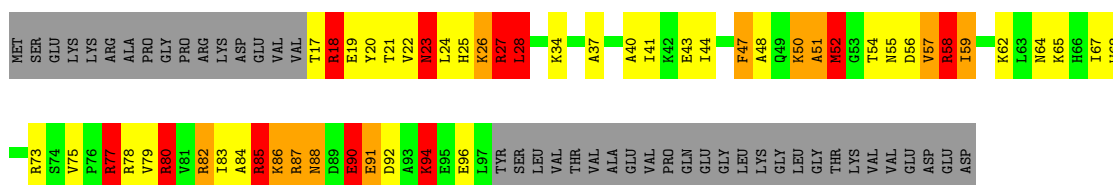
- Molecule 8: ribosomal protein L23

Chain 4: 19% 19% 10% 5% 47%



- Molecule 9: ribosomal protein L31

Chain 6: 24% 24% 9% 9% 34%



4 Experimental information

Property	Value	Source
EM reconstruction method	SINGLE PARTICLE	Depositor
Imposed symmetry	POINT, C1	Depositor
Number of particles used	Not provided	
Resolution determination method	FSC 0.5 CUT-OFF	Depositor
CTF correction method	Not provided	
Microscope	FEI TECNAI F30	Depositor
Voltage (kV)	300	Depositor
Electron dose ($e^-/\text{\AA}^2$)	Not provided	
Minimum defocus (nm)	800	Depositor
Maximum defocus (nm)	3500	Depositor
Magnification	Not provided	
Image detector	KODAK SO-163 FILM	Depositor
Maximum map value	1.546	Depositor
Minimum map value	-0.551	Depositor
Average map value	0.015	Depositor
Map value standard deviation	0.125	Depositor
Recommended contour level	0.173	Depositor
Map size (\AA)	452.64, 452.64, 452.64	wwPDB
Map dimensions	368, 368, 368	wwPDB
Map angles ($^\circ$)	90, 90, 90	wwPDB
Pixel spacing (\AA)	1.23, 1.23, 1.23	Depositor

5 Model quality i

5.1 Standard geometry i

The Z score for a bond length (or angle) is the number of standard deviations the observed value is removed from the expected value. A bond length (or angle) with $|Z| > 5$ is considered an outlier worth inspection. RMSZ is the root-mean-square of all Z scores of the bond lengths (or angles).

Mol	Chain	Bond lengths		Bond angles	
		RMSZ	# Z >5	RMSZ	# Z >5
1	A	0.45	0/3053	0.70	0/4758
2	9	0.42	0/2167	0.72	1/3379 (0.0%)
3	B	0.46	0/884	0.69	0/1188
4	W	0.95	2/876 (0.2%)	1.26	8/1165 (0.7%)
5	1	0.60	0/1035	0.71	1/1389 (0.1%)
6	2	0.53	0/1496	0.75	2/2008 (0.1%)
7	5	1.48	4/506 (0.8%)	2.69	24/673 (3.6%)
8	4	1.43	10/660 (1.5%)	3.42	44/885 (5.0%)
9	6	1.35	3/680 (0.4%)	1.95	24/906 (2.6%)
All	All	0.76	19/11357 (0.2%)	1.29	104/16351 (0.6%)

Chiral center outliers are detected by calculating the chiral volume of a chiral center and verifying if the center is modelled as a planar moiety or with the opposite hand. A planarity outlier is detected by checking planarity of atoms in a peptide group, atoms in a mainchain group or atoms of a sidechain that are expected to be planar.

Mol	Chain	#Chirality outliers	#Planarity outliers
1	A	0	3
2	9	0	2
4	W	0	5
7	5	2	2
8	4	3	7
9	6	0	11
All	All	5	30

All (19) bond length outliers are listed below:

Mol	Chain	Res	Type	Atoms	Z	Observed(Å)	Ideal(Å)
4	W	345	PHE	C-N	-18.40	0.91	1.34
4	W	362	LYS	C-N	17.62	1.64	1.33
7	5	38	VAL	C-N	11.88	1.61	1.34
7	5	39	ALA	N-CA	-11.08	1.24	1.46
7	5	38	VAL	CA-C	10.76	1.80	1.52

Continued on next page...

Continued from previous page...

Mol	Chain	Res	Type	Atoms	Z	Observed(Å)	Ideal(Å)
8	4	97	ASP	N-CA	-9.12	1.28	1.46
8	4	125	ARG	CZ-NH2	9.02	1.44	1.33
8	4	131	LYS	CD-CE	8.06	1.71	1.51
8	4	140	TYR	CE2-CZ	-7.89	1.28	1.38
8	4	135	LYS	CD-CE	6.86	1.68	1.51
8	4	97	ASP	CB-CG	6.08	1.64	1.51
7	5	34	ARG	CZ-NH2	6.01	1.40	1.33
8	4	131	LYS	CE-NZ	5.78	1.63	1.49
9	6	85	ARG	CZ-NH1	5.62	1.40	1.33
8	4	135	LYS	CE-NZ	5.59	1.63	1.49
8	4	96	VAL	C-N	5.58	1.46	1.34
9	6	58	ARG	CZ-NH2	5.40	1.40	1.33
9	6	27	ARG	CZ-NH1	5.36	1.40	1.33
8	4	125	ARG	CD-NE	-5.31	1.37	1.46

All (104) bond angle outliers are listed below:

Mol	Chain	Res	Type	Atoms	Z	Observed(°)	Ideal(°)
8	4	125	ARG	NE-CZ-NH2	-72.81	83.89	120.30
7	5	39	ALA	N-CA-CB	-42.85	50.11	110.10
4	W	362	LYS	C-N-CA	-28.46	62.54	122.30
8	4	125	ARG	NE-CZ-NH1	20.51	130.55	120.30
7	5	34	ARG	NE-CZ-NH1	-20.27	110.16	120.30
8	4	97	ASP	CB-CG-OD1	17.33	133.90	118.30
7	5	39	ALA	N-CA-C	-15.52	69.10	111.00
9	6	18	ARG	NE-CZ-NH2	-14.67	112.96	120.30
7	5	38	VAL	CA-C-O	-14.15	90.39	120.10
7	5	43	SER	N-CA-CB	-13.21	90.69	110.50
7	5	38	VAL	CA-C-N	12.98	145.76	117.20
9	6	18	ARG	NE-CZ-NH1	12.94	126.77	120.30
8	4	97	ASP	CB-CG-OD2	-12.52	107.03	118.30
8	4	125	ARG	NH1-CZ-NH2	12.50	133.15	119.40
4	W	362	LYS	O-C-N	11.68	143.05	123.20
4	W	345	PHE	C-N-CA	11.67	150.86	121.70
8	4	97	ASP	CB-CA-C	11.60	133.60	110.40
4	W	361	SER	CA-C-N	-11.56	91.77	117.20
8	4	90	ASN	CB-CG-OD1	-11.35	98.89	121.60
8	4	96	VAL	C-N-CA	-11.31	93.41	121.70
8	4	141	ASP	C-N-CA	11.16	149.60	121.70
7	5	43	SER	N-CA-C	10.90	140.44	111.00
4	W	362	LYS	CA-C-N	-10.52	95.15	116.20
9	6	52	MET	CG-SD-CE	-10.06	84.10	100.20

Continued on next page...

Continued from previous page...

Mol	Chain	Res	Type	Atoms	Z	Observed(°)	Ideal(°)
7	5	43	SER	C-N-CA	9.85	146.31	121.70
8	4	131	LYS	CD-CE-NZ	9.66	133.93	111.70
7	5	17	ASP	CB-CG-OD2	9.59	126.94	118.30
8	4	142	ALA	CB-CA-C	-9.59	95.72	110.10
8	4	101	ASP	C-N-CA	9.47	145.37	121.70
8	4	115	ILE	CA-CB-CG1	9.31	128.69	111.00
4	W	361	SER	O-C-N	9.18	137.39	122.70
7	5	57	ARG	NE-CZ-NH1	-8.93	115.83	120.30
8	4	101	ASP	N-CA-C	8.87	134.96	111.00
9	6	57	VAL	CB-CA-C	8.61	127.77	111.40
7	5	38	VAL	C-N-CA	-8.57	100.26	121.70
8	4	145	VAL	CA-CB-CG2	-8.48	98.17	110.90
7	5	38	VAL	N-CA-C	8.34	133.52	111.00
8	4	115	ILE	CA-CB-CG2	-8.20	94.51	110.90
8	4	140	TYR	CG-CD1-CE1	-8.19	114.75	121.30
8	4	135	LYS	CA-CB-CG	8.11	131.25	113.40
7	5	44	LYS	N-CA-CB	8.05	125.09	110.60
9	6	58	ARG	NE-CZ-NH2	-8.02	116.29	120.30
8	4	131	LYS	CG-CD-CE	8.00	135.88	111.90
9	6	90	GLU	CA-CB-CG	7.87	130.72	113.40
8	4	90	ASN	CB-CG-ND2	7.87	135.58	116.70
7	5	38	VAL	CB-CA-C	7.79	126.20	111.40
8	4	96	VAL	CG1-CB-CG2	-7.74	98.52	110.90
7	5	39	ALA	CA-C-N	7.68	134.10	117.20
7	5	39	ALA	O-C-N	-7.55	110.61	122.70
9	6	28	LEU	CB-CA-C	-7.42	96.11	110.20
8	4	135	LYS	CD-CE-NZ	7.33	128.56	111.70
8	4	101	ASP	CA-C-N	-7.29	101.17	117.20
8	4	135	LYS	CB-CG-CD	7.22	130.37	111.60
7	5	43	SER	O-C-N	7.10	134.06	122.70
8	4	101	ASP	CB-CG-OD2	-7.07	111.94	118.30
8	4	119	LYS	CD-CE-NZ	7.07	127.95	111.70
9	6	52	MET	CA-CB-CG	7.03	125.24	113.30
9	6	85	ARG	CB-CA-C	-7.02	96.36	110.40
7	5	34	ARG	NH1-CZ-NH2	6.94	127.03	119.40
9	6	85	ARG	N-CA-CB	6.89	123.01	110.60
7	5	38	VAL	CA-CB-CG2	6.85	121.18	110.90
9	6	23	ASN	N-CA-C	-6.84	92.54	111.00
9	6	27	ARG	NE-CZ-NH1	-6.80	116.90	120.30
9	6	85	ARG	NE-CZ-NH1	-6.71	116.95	120.30
8	4	96	VAL	CA-C-O	-6.67	106.10	120.10
8	4	141	ASP	N-CA-C	6.58	128.75	111.00

Continued on next page...

Continued from previous page...

Mol	Chain	Res	Type	Atoms	Z	Observed(°)	Ideal(°)
4	W	361	SER	C-N-CA	-6.53	105.37	121.70
4	W	344	PRO	O-C-N	-6.52	112.27	122.70
8	4	70	TYR	CB-CG-CD1	6.51	124.91	121.00
8	4	141	ASP	CA-C-N	-6.46	102.98	117.20
9	6	80	ARG	N-CA-C	-6.32	93.94	111.00
8	4	115	ILE	CB-CA-C	-6.30	98.99	111.60
9	6	90	GLU	N-CA-CB	6.23	121.82	110.60
7	5	17	ASP	CB-CG-OD1	-6.21	112.71	118.30
7	5	43	SER	CA-C-N	-6.02	103.95	117.20
8	4	140	TYR	CG-CD2-CE2	-5.99	116.51	121.30
8	4	141	ASP	O-C-N	5.97	132.26	122.70
8	4	89	ASN	CB-CG-OD1	5.80	133.20	121.60
9	6	94	LYS	N-CA-CB	5.73	120.92	110.60
8	4	125	ARG	CB-CA-C	5.71	121.83	110.40
8	4	102	LYS	CB-CA-C	-5.70	99.00	110.40
5	1	37	LEU	CA-CB-CG	5.68	128.38	115.30
7	5	39	ALA	CB-CA-C	5.67	118.61	110.10
7	5	57	ARG	NE-CZ-NH2	5.66	123.13	120.30
9	6	85	ARG	NE-CZ-NH2	5.66	123.13	120.30
7	5	38	VAL	N-CA-CB	-5.64	99.08	111.50
6	2	242	LEU	CA-CB-CG	5.56	128.09	115.30
8	4	125	ARG	N-CA-CB	5.54	120.57	110.60
9	6	58	ARG	NE-CZ-NH1	5.51	123.05	120.30
9	6	96	GLU	N-CA-C	-5.50	96.15	111.00
8	4	124	ILE	N-CA-C	-5.49	96.17	111.00
8	4	140	TYR	CE1-CZ-OH	5.49	134.92	120.10
9	6	82	ARG	N-CA-C	-5.46	96.26	111.00
9	6	88	ASN	N-CA-C	-5.43	96.35	111.00
8	4	123	LEU	CB-CG-CD1	5.39	120.17	111.00
2	9	2914	A	C2'-C3'-O3'	5.38	122.31	113.70
8	4	124	ILE	O-C-N	-5.36	114.13	122.70
9	6	19	GLU	N-CA-C	-5.29	96.70	111.00
6	2	237	LEU	CA-CB-CG	5.29	127.47	115.30
8	4	101	ASP	N-CA-CB	5.26	120.07	110.60
9	6	52	MET	N-CA-C	-5.26	96.81	111.00
8	4	97	ASP	N-CA-CB	-5.23	101.19	110.60
8	4	119	LYS	CG-CD-CE	5.14	127.31	111.90
9	6	85	ARG	CD-NE-CZ	-5.09	116.48	123.60

All (5) chirality outliers are listed below:

Continued on next page...

Continued from previous page...

Mol	Chain	Res	Type	Atom
-----	-------	-----	------	------

Mol	Chain	Res	Type	Atom
7	5	38	VAL	CA
7	5	39	ALA	CA
8	4	97	ASP	CA
8	4	125	ARG	CA
8	4	141	ASP	CA

All (30) planarity outliers are listed below:

Mol	Chain	Res	Type	Group
8	4	101	ASP	Mainchain,Peptide
8	4	124	ILE	Peptide
8	4	125	ARG	Sidechain
8	4	140	TYR	Sidechain
8	4	141	ASP	Peptide
8	4	89	ASN	Peptide
7	5	38	VAL	Peptide
7	5	43	SER	Peptide
9	6	18	ARG	Sidechain
9	6	27	ARG	Sidechain
9	6	47	PHE	Sidechain
9	6	50	LYS	Peptide
9	6	51	ALA	Peptide
9	6	58	ARG	Sidechain
9	6	77	ARG	Sidechain
9	6	80	ARG	Sidechain
9	6	86	LYS	Peptide
9	6	87	ARG	Peptide,Sidechain
2	9	2842	G	Sidechain
2	9	2866	U	Sidechain
1	A	197	G	Sidechain
1	A	201	A	Sidechain
1	A	208	A	Sidechain
4	W	344	PRO	Mainchain,Peptide
4	W	361	SER	Mainchain,Peptide
4	W	362	LYS	Peptide

5.2 Too-close contacts [\(i\)](#)

In the following table, the Non-H and H(model) columns list the number of non-hydrogen atoms and hydrogen atoms in the chain respectively. The H(added) column lists the number of hydrogen

atoms added and optimized by MolProbity. The Clashes column lists the number of clashes within the asymmetric unit, whereas Symm-Clashes lists symmetry-related clashes.

Mol	Chain	Non-H	H(model)	H(added)	Clashes	Symm-Clashes
1	A	2728	0	1366	186	0
2	9	1935	0	977	103	0
3	B	870	0	901	79	0
4	W	865	0	871	34	0
5	1	1020	0	1019	53	0
6	2	1479	0	1533	31	0
7	5	504	0	553	58	0
8	4	652	0	708	85	0
9	6	671	0	705	90	0
All	All	10724	0	8633	627	0

The all-atom clashscore is defined as the number of clashes found per 1000 atoms (including hydrogen atoms). The all-atom clashscore for this structure is 33.

All (627) close contacts within the same asymmetric unit are listed below, sorted by their clash magnitude.

Atom-1	Atom-2	Interatomic distance (Å)	Clash overlap (Å)
2:9:2904:U:H4'	9:6:20:TYR:CD2	1.45	1.51
7:5:38:VAL:C	7:5:38:VAL:HA	1.20	1.49
7:5:38:VAL:C	7:5:38:VAL:CA	1.80	1.47
1:A:173:A:C1'	1:A:224:G:C4'	1.87	1.45
2:9:2856:A:H4'	9:6:78:ARG:CG	1.40	1.44
1:A:127:A:C1'	1:A:224:G:N2	1.72	1.41
1:A:127:A:C2'	1:A:224:G:C2	1.78	1.40
1:A:173:A:H1'	1:A:224:G:C4'	0.94	1.39
5:1:-1:HIS:CB	5:1:4:PHE:CD2	1.95	1.39
5:1:0:SER:C	5:1:29:VAL:HG23	1.10	1.38
1:A:127:A:C3'	1:A:224:G:N2	1.88	1.37
1:A:173:A:C1'	1:A:224:G:H4'	1.50	1.36
1:A:173:A:H1'	1:A:224:G:C5'	1.60	1.32
1:A:125:G:C8	1:A:227:G:C6	2.12	1.31
2:9:2856:A:C4'	9:6:78:ARG:HG3	1.55	1.31
1:A:125:G:C8	1:A:227:G:O6	1.84	1.30
1:A:127:A:H2'	1:A:224:G:C2	1.38	1.30
1:A:172:A:C6	1:A:224:G:O2'	1.85	1.30
1:A:172:A:N6	1:A:225:C:O4'	1.64	1.29
1:A:172:A:C5	1:A:224:G:O2'	1.74	1.27
6:2:204:VAL:HG11	9:6:17:THR:O	1.14	1.26
2:9:2856:A:O4'	9:6:23:ASN:ND2	1.68	1.26

Continued on next page...

Continued from previous page...

Atom-1	Atom-2	Interatomic distance (Å)	Clash overlap (Å)
5:1:0:SER:C	5:1:29:VAL:CG2	2.04	1.25
1:A:234:A:OP2	5:1:49:HIS:HA	1.12	1.21
7:5:34:ARG:O	8:4:75:TYR:CD1	1.94	1.21
4:W:343:GLY:O	4:W:346:SER:HB2	1.05	1.19
2:9:2854:A:O2'	9:6:26:LYS:HE3	1.41	1.19
2:9:2854:A:O2'	9:6:26:LYS:CE	1.91	1.18
1:A:173:A:O2'	1:A:224:G:H5''	1.02	1.17
5:1:-1:HIS:HB2	5:1:4:PHE:CD2	1.79	1.16
2:9:2856:A:O2'	9:6:78:ARG:CD	1.96	1.14
4:W:361:SER:O	4:W:362:LYS:HG3	1.43	1.14
4:W:343:GLY:O	4:W:346:SER:CB	1.97	1.13
1:A:173:A:O2'	1:A:224:G:C5'	1.98	1.11
1:A:125:G:O2'	1:A:227:G:C1'	1.97	1.11
6:2:204:VAL:CG1	9:6:17:THR:O	1.99	1.10
8:4:140:TYR:CZ	8:4:145:VAL:HG21	1.88	1.09
1:A:172:A:C6	1:A:224:G:C2'	2.36	1.09
1:A:173:A:C2'	1:A:224:G:H5''	1.82	1.08
5:1:-1:HIS:HB3	5:1:4:PHE:CD2	1.73	1.07
1:A:173:A:C2	1:A:224:G:N3	2.18	1.06
2:9:2905:A:OP1	9:6:51:ALA:O	1.71	1.06
1:A:173:A:H1'	1:A:224:G:O4'	1.55	1.05
1:A:125:G:O2'	1:A:227:G:C8	2.08	1.05
7:5:34:ARG:O	8:4:75:TYR:CE1	2.08	1.05
1:A:127:A:N9	1:A:225:C:N3	2.05	1.04
2:9:2856:A:O2'	9:6:78:ARG:HD2	1.02	1.04
2:9:2904:U:C4'	9:6:20:TYR:CD2	2.40	1.03
7:5:38:VAL:HA	7:5:38:VAL:O	1.56	1.03
1:A:234:A:OP2	5:1:49:HIS:CA	2.08	1.02
1:A:172:A:H61	1:A:225:C:C1'	1.73	1.01
5:1:0:SER:O	5:1:29:VAL:HG23	1.59	1.01
1:A:125:G:O2'	1:A:227:G:N9	1.56	1.01
7:5:38:VAL:CG2	8:4:76:PRO:O	2.10	1.00
1:A:126:C:O2'	1:A:226:U:O4'	1.63	0.99
5:1:-1:HIS:HB2	5:1:4:PHE:HD2	1.09	0.98
2:9:2904:U:O2'	9:6:47:PHE:CZ	2.16	0.98
2:9:2856:A:HO2'	9:6:78:ARG:HD2	1.18	0.98
8:4:136:LEU:HD13	8:4:140:TYR:CE2	1.98	0.97
2:9:2904:U:H5''	9:6:20:TYR:HE2	1.26	0.97
2:9:2904:U:C4'	9:6:20:TYR:HD2	1.76	0.97
5:1:-1:HIS:CB	5:1:4:PHE:HD2	1.49	0.97
2:9:2904:U:H4'	9:6:20:TYR:CE2	1.99	0.96

Continued on next page...

Continued from previous page...

Atom-1	Atom-2	Interatomic distance (Å)	Clash overlap (Å)
1:A:220:C:H2'	1:A:221:C:H5''	1.45	0.96
7:5:34:ARG:HH12	7:5:48:ILE:HG23	1.29	0.95
5:1:-1:HIS:HB3	5:1:4:PHE:CE2	2.01	0.95
1:A:172:A:C6	1:A:225:C:O4'	1.96	0.95
8:4:119:LYS:HD3	8:4:135:LYS:HZ3	1.30	0.95
7:5:38:VAL:C	8:4:75:TYR:OH	2.04	0.95
3:B:60:VAL:HG23	3:B:83:ARG:O	1.67	0.94
1:A:172:A:C6	1:A:224:G:H2'	2.02	0.92
5:1:0:SER:CA	5:1:54:LEU:HD21	2.00	0.92
1:A:173:A:H1'	1:A:224:G:H4'	0.93	0.91
2:9:2906:A:P	9:6:50:LYS:HG2	2.11	0.91
2:9:2856:A:HO2'	9:6:21:THR:HG1	1.19	0.91
1:A:127:A:C3'	1:A:224:G:H21	1.66	0.90
1:A:126:C:O2	1:A:226:U:C6	2.24	0.90
2:9:2904:U:H5''	9:6:20:TYR:CE2	2.06	0.90
1:A:127:A:C8	1:A:225:C:N3	2.40	0.90
2:9:2905:A:O3'	9:6:50:LYS:HG2	1.71	0.89
1:A:127:A:C2'	1:A:128:U:H5''	2.02	0.89
1:A:221:C:N4	1:A:222:G:O6	2.05	0.89
3:B:64:LYS:HD3	3:B:64:LYS:N	1.88	0.89
5:1:0:SER:HA	5:1:54:LEU:HD21	1.56	0.88
1:A:172:A:N7	1:A:224:G:O2'	2.06	0.88
1:A:126:C:C2	1:A:226:U:N1	2.17	0.88
6:2:204:VAL:HG12	9:6:18:ARG:CD	2.04	0.88
7:5:38:VAL:CA	7:5:38:VAL:O	2.18	0.87
1:A:124:G:C6	1:A:126:C:C5	2.62	0.87
2:9:2890:A:H5''	2:9:2890:A:H8	1.37	0.87
1:A:127:A:H2'	1:A:128:U:H5''	1.57	0.87
5:1:-1:HIS:ND1	5:1:68:VAL:O	2.06	0.87
1:A:127:A:C2'	1:A:224:G:N2	0.72	0.87
3:B:94:CYS:O	3:B:95:LEU:HD23	1.74	0.86
8:4:122:THR:HG23	8:4:130:LYS:HD3	1.56	0.86
1:A:173:A:C1'	1:A:224:G:O4'	2.05	0.86
5:1:0:SER:HB2	5:1:29:VAL:N	1.58	0.85
1:A:126:C:O2'	1:A:226:U:C4'	2.24	0.85
2:9:2906:A:OP1	9:6:50:LYS:HG2	1.77	0.84
1:A:184:A:N3	4:W:405:ARG:NH1	2.24	0.84
1:A:127:A:C2'	1:A:224:G:H21	0.59	0.84
1:A:126:C:O2	1:A:226:U:N1	2.08	0.84
9:6:54:THR:HA	9:6:90:GLU:HB2	1.61	0.83
1:A:173:A:C1'	1:A:224:G:C5'	2.39	0.83

Continued on next page...

Continued from previous page...

Atom-1	Atom-2	Interatomic distance (Å)	Clash overlap (Å)
1:A:128:U:H5''	1:A:224:G:H21	1.44	0.82
7:5:27:LYS:HE3	7:5:27:LYS:O	1.80	0.82
1:A:127:A:O2'	1:A:224:G:N2	1.94	0.82
4:W:361:SER:O	4:W:362:LYS:CG	2.27	0.82
3:B:14:ARG:NH1	3:B:14:ARG:HB3	1.96	0.81
3:B:24:ASN:HD22	3:B:27:LYS:HG3	1.42	0.81
8:4:136:LEU:HD13	8:4:140:TYR:HE2	1.43	0.81
1:A:127:A:C3'	1:A:224:G:H22	1.66	0.81
7:5:12:TRP:HE1	7:5:61:VAL:HG22	1.45	0.81
1:A:172:A:N6	1:A:224:G:O2'	2.14	0.80
5:1:0:SER:O	5:1:29:VAL:CG2	2.23	0.80
2:9:2855:G:C4	9:6:23:ASN:OD1	2.28	0.80
7:5:35:ILE:HA	8:4:75:TYR:HE1	1.46	0.80
2:9:2854:A:C2'	9:6:26:LYS:HE3	2.10	0.80
6:2:204:VAL:HG12	9:6:18:ARG:HD2	1.63	0.79
7:5:38:VAL:HG23	8:4:76:PRO:O	1.81	0.79
1:A:128:U:H5''	1:A:224:G:N2	1.96	0.79
4:W:344:PRO:C	4:W:346:SER:N	2.34	0.79
8:4:115:ILE:HG21	8:4:140:TYR:OH	1.81	0.79
1:A:173:A:C1'	1:A:224:G:H5''	2.09	0.78
1:A:125:G:O2'	1:A:227:G:H1'	1.82	0.78
5:1:0:SER:CB	5:1:29:VAL:N	2.31	0.78
1:A:124:G:N1	1:A:126:C:C5	2.52	0.78
1:A:220:C:C2'	1:A:221:C:H5''	2.14	0.78
8:4:136:LEU:HD13	8:4:140:TYR:CD2	2.18	0.78
2:9:2856:A:C1'	9:6:23:ASN:HD21	1.97	0.78
2:9:2905:A:OP1	9:6:51:ALA:CB	2.32	0.78
6:2:204:VAL:CG1	9:6:18:ARG:HD3	2.14	0.77
4:W:344:PRO:O	4:W:346:SER:N	2.18	0.76
2:9:2904:U:C5'	9:6:20:TYR:CE2	2.69	0.76
7:5:35:ILE:HA	8:4:75:TYR:CE1	2.20	0.76
7:5:54:SER:HA	7:5:57:ARG:HE	1.51	0.76
1:A:175:G:H3'	1:A:176:A:H5'	1.68	0.75
1:A:127:A:H2'	1:A:128:U:C5'	2.17	0.75
8:4:115:ILE:HG21	8:4:140:TYR:CZ	2.21	0.75
1:A:127:A:C1'	1:A:225:C:N3	2.29	0.75
3:B:14:ARG:HB3	3:B:14:ARG:CZ	2.17	0.75
2:9:2878:U:H2'	2:9:2879:A:O4'	1.86	0.75
8:4:119:LYS:HD3	8:4:135:LYS:NZ	2.02	0.75
8:4:140:TYR:CE2	8:4:145:VAL:HG21	2.22	0.75
2:9:2904:U:C4'	9:6:20:TYR:CE2	2.66	0.75

Continued on next page...

Continued from previous page...

Atom-1	Atom-2	Interatomic distance (Å)	Clash overlap (Å)
1:A:173:A:C4	1:A:224:G:O2'	2.39	0.74
7:5:38:VAL:HG21	8:4:76:PRO:O	1.86	0.74
7:5:16:LYS:HG3	7:5:67:ARG:C	2.08	0.74
8:4:105:ILE:HD11	8:4:130:LYS:HE3	1.70	0.74
8:4:115:ILE:HG22	8:4:140:TYR:CE1	2.23	0.74
9:6:25:HIS:CE1	9:6:79:VAL:HG12	2.23	0.74
2:9:2906:A:OP1	9:6:50:LYS:CG	2.36	0.73
1:A:234:A:P	5:1:49:HIS:HA	2.28	0.73
5:1:-1:HIS:CB	5:1:4:PHE:CE2	2.67	0.73
7:5:35:ILE:CA	8:4:75:TYR:HE1	2.00	0.73
1:A:127:A:C2'	1:A:224:G:N3	2.47	0.73
1:A:117:U:H3	1:A:234:A:H61	1.37	0.73
1:A:148:G:H4'	3:B:15:PHE:O	1.89	0.72
2:9:2903:C:H5'	2:9:2903:C:H6	1.55	0.72
1:A:151:C:OP1	1:A:204:G:H4'	1.90	0.72
8:4:115:ILE:CG2	8:4:140:TYR:CZ	2.73	0.72
8:4:110:LYS:HG2	8:4:115:ILE:O	1.88	0.72
2:9:2851:G:O2'	2:9:2852:A:H5'	1.90	0.72
2:9:2866:U:H1'	2:9:2891:A:C4	2.25	0.71
1:A:125:G:C2'	1:A:227:G:C8	2.60	0.71
1:A:124:G:N1	1:A:126:C:C6	2.57	0.71
9:6:83:ILE:HG22	9:6:94:LYS:HB2	1.71	0.71
2:9:2866:U:H4'	2:9:2867:G:H5'	1.71	0.71
7:5:34:ARG:NH1	7:5:48:ILE:HG23	2.06	0.71
3:B:73:ASN:ND2	3:B:75:ASP:H	1.89	0.71
1:A:130:A:H2'	1:A:131:A:C8	2.26	0.71
7:5:34:ARG:HH12	7:5:48:ILE:CG2	2.04	0.71
9:6:55:ASN:HD22	9:6:92:ASP:HB2	1.56	0.71
6:2:204:VAL:HG12	9:6:18:ARG:HD3	1.71	0.70
8:4:122:THR:O	8:4:123:LEU:HD12	1.91	0.70
8:4:140:TYR:CZ	8:4:145:VAL:CG2	2.71	0.70
2:9:2909:G:O2'	2:9:2910:A:H5'	1.91	0.70
2:9:2827:A:H2'	2:9:2828:G:O4'	1.92	0.70
5:1:-1:HIS:CE1	5:1:68:VAL:O	2.43	0.70
2:9:2904:U:C5'	9:6:20:TYR:HE2	2.00	0.69
6:2:63:ARG:HB2	6:2:135:ARG:HB2	1.75	0.69
8:4:103:LYS:HE3	8:4:103:LYS:O	1.93	0.69
7:5:38:VAL:HG11	8:4:76:PRO:HG2	1.75	0.68
1:A:154:G:O2'	1:A:155:G:H5'	1.93	0.68
9:6:25:HIS:HE1	9:6:79:VAL:HG12	1.58	0.68
1:A:127:A:C4	1:A:225:C:C4	2.82	0.68

Continued on next page...

Continued from previous page...

Atom-1	Atom-2	Interatomic distance (Å)	Clash overlap (Å)
3:B:93:LEU:HD23	3:B:93:LEU:N	2.08	0.68
8:4:119:LYS:HG3	8:4:135:LYS:HB2	1.75	0.68
5:1:-1:HIS:ND1	5:1:68:VAL:C	2.47	0.68
5:1:-1:HIS:HD1	5:1:68:VAL:C	1.95	0.68
2:9:2895:C:OP1	9:6:77:ARG:NH1	2.27	0.67
5:1:-1:HIS:C	5:1:54:LEU:HD11	2.14	0.67
7:5:44:LYS:NZ	7:5:44:LYS:HA	2.08	0.67
1:A:175:G:H1	1:A:221:C:H42	1.42	0.67
1:A:125:G:H8	1:A:227:G:C6	2.04	0.67
1:A:127:A:O2'	1:A:128:U:H5''	1.93	0.67
1:A:215:A:O5'	1:A:215:A:H8	1.78	0.67
9:6:22:VAL:HG12	9:6:23:ASN:O	1.95	0.67
4:W:361:SER:C	4:W:362:LYS:HG3	2.13	0.67
2:9:2905:A:OP1	9:6:51:ALA:HB1	1.72	0.67
3:B:15:PHE:CE1	3:B:85:GLN:HB2	2.30	0.67
3:B:14:ARG:O	3:B:14:ARG:HG2	1.95	0.66
1:A:172:A:N6	1:A:224:G:C2'	2.59	0.66
9:6:37:ALA:HB1	9:6:68:TRP:CD1	2.31	0.66
1:A:173:A:O4'	1:A:224:G:H4'	1.95	0.66
1:A:128:U:C5'	1:A:224:G:N2	2.58	0.66
1:A:127:A:O2'	1:A:224:G:C2	2.44	0.65
1:A:157:A:H2'	1:A:158:C:H6	1.62	0.65
1:A:233:U:O4'	5:1:40:GLU:HB3	1.68	0.65
6:2:202:LEU:O	6:2:206:ARG:HB2	1.96	0.65
1:A:172:A:N6	1:A:224:G:H2'	2.11	0.65
9:6:44:ILE:CD1	9:6:67:ILE:HD11	2.26	0.65
1:A:127:A:H3'	1:A:224:G:H22	1.58	0.65
9:6:67:ILE:HG23	9:6:75:VAL:HG23	1.77	0.65
4:W:349:LEU:HD22	4:W:359:PHE:HE2	1.62	0.64
9:6:56:ASP:O	9:6:92:ASP:HB3	1.97	0.64
2:9:2890:A:H5''	2:9:2890:A:C8	2.26	0.64
2:9:2894:C:O2'	2:9:2895:C:H5'	1.97	0.64
5:1:0:SER:HA	5:1:28:PRO:HB2	1.78	0.64
2:9:2908:A:H2'	2:9:2909:G:O4'	1.98	0.64
2:9:2856:A:C4'	9:6:78:ARG:CG	2.24	0.64
8:4:125:ARG:HH22	8:4:131:LYS:HZ3	1.45	0.64
1:A:157:A:H2'	1:A:158:C:C6	2.32	0.63
2:9:2854:A:O2'	9:6:26:LYS:HE2	1.91	0.63
6:2:204:VAL:CG1	9:6:18:ARG:CD	2.74	0.63
1:A:148:G:O2'	3:B:83:ARG:NH2	2.31	0.63
3:B:60:VAL:HG23	3:B:83:ARG:C	2.18	0.63

Continued on next page...

Continued from previous page...

Atom-1	Atom-2	Interatomic distance (Å)	Clash overlap (Å)
5:1:0:SER:N	5:1:54:LEU:HD11	2.12	0.63
7:5:35:ILE:O	7:5:38:VAL:HG12	1.97	0.63
2:9:2904:U:H4'	9:6:20:TYR:HD2	0.88	0.63
1:A:124:G:O6	1:A:126:C:C5	2.51	0.63
4:W:344:PRO:O	4:W:346:SER:HB3	1.99	0.63
5:1:20:GLY:C	5:1:22:SER:H	2.01	0.63
6:2:103:VAL:HG12	6:2:105:ASN:H	1.62	0.63
1:A:195:U:O4'	4:W:411:GLY:HA3	1.99	0.63
3:B:88:GLN:HE21	3:B:92:SER:HB2	1.63	0.63
1:A:139:A:H2'	1:A:140:C:H6	1.63	0.63
9:6:28:LEU:HD23	9:6:75:VAL:HG11	1.80	0.63
8:4:119:LYS:HD2	8:4:119:LYS:C	2.18	0.63
1:A:149:A:H4'	3:B:17:CYS:SG	2.39	0.62
3:B:76:VAL:HG13	3:B:77:GLN:N	2.14	0.62
2:9:2849:U:O2'	2:9:2850:C:OP2	2.16	0.62
1:A:124:G:C6	1:A:126:C:H5	2.13	0.62
1:A:193:G:N1	4:W:409:GLY:O	2.32	0.62
3:B:107:TYR:CZ	3:B:111:MET:HG3	2.35	0.62
4:W:341:LYS:O	4:W:345:PHE:CD1	2.52	0.62
8:4:122:THR:HG23	8:4:130:LYS:CD	2.30	0.62
1:A:127:A:C2'	1:A:224:G:H22	1.27	0.62
8:4:119:LYS:NZ	8:4:135:LYS:HD3	2.14	0.62
1:A:139:A:H2'	1:A:140:C:C6	2.35	0.61
4:W:361:SER:C	4:W:362:LYS:CG	2.66	0.61
1:A:117:U:H3	1:A:234:A:N6	1.98	0.61
2:9:2855:G:N3	9:6:23:ASN:ND2	2.49	0.60
1:A:234:A:OP2	5:1:48:THR:O	2.19	0.60
1:A:173:A:H2	1:A:224:G:N3	1.55	0.60
1:A:120:G:N2	1:A:230:C:O2	2.32	0.60
3:B:73:ASN:HD21	3:B:75:ASP:H	1.50	0.60
4:W:394:LYS:HB3	4:W:394:LYS:HZ2	1.67	0.60
8:4:110:LYS:HE3	8:4:110:LYS:O	2.01	0.60
4:W:344:PRO:O	4:W:346:SER:CB	2.50	0.60
8:4:83:MET:HA	8:4:86:ILE:HG22	1.84	0.59
8:4:91:THR:HG22	8:4:135:LYS:HG3	1.83	0.59
8:4:114:ASP:C	8:4:115:ILE:HG23	2.15	0.59
6:2:159:GLN:CD	6:2:206:ARG:HH22	2.06	0.59
5:1:-1:HIS:CG	5:1:69:GLY:CA	2.85	0.59
7:5:31:GLY:O	7:5:35:ILE:HG12	2.03	0.59
1:A:126:C:N3	1:A:226:U:N3	2.51	0.59
8:4:113:TYR:HB2	8:4:115:ILE:HD12	1.84	0.59

Continued on next page...

Continued from previous page...

Atom-1	Atom-2	Interatomic distance (Å)	Clash overlap (Å)
2:9:2900:G:H2'	2:9:2901:C:O4'	2.02	0.59
1:A:172:A:C5	1:A:224:G:C2'	2.77	0.59
2:9:2866:U:H4'	2:9:2867:G:C5'	2.32	0.58
3:B:73:ASN:ND2	3:B:75:ASP:N	2.51	0.58
8:4:125:ARG:HD3	8:4:127:ASP:HB3	1.84	0.58
1:A:212:C:H4'	1:A:213:A:OP1	2.03	0.58
3:B:73:ASN:HD21	3:B:75:ASP:CB	2.16	0.58
5:1:-1:HIS:N	5:1:4:PHE:CZ	2.52	0.58
1:A:214:A:H5'	1:A:215:A:P	2.43	0.58
1:A:233:U:H2'	1:A:234:A:H5''	1.84	0.58
1:A:233:U:H3'	1:A:234:A:H5'	1.86	0.58
5:1:0:SER:HB2	5:1:28:PRO:C	2.19	0.58
2:9:2907:C:H2'	2:9:2908:A:O4'	2.04	0.57
1:A:128:U:H5'	1:A:128:U:H6	1.68	0.57
1:A:233:U:H1'	5:1:40:GLU:HA	1.84	0.57
8:4:115:ILE:CG2	8:4:140:TYR:CE1	2.85	0.57
3:B:112:ILE:HG23	3:B:115:LEU:HD12	1.87	0.57
1:A:163:A:O5'	1:A:163:A:H8	1.87	0.57
3:B:60:VAL:CG2	3:B:84:VAL:HG12	2.35	0.57
6:2:180:GLN:HG3	6:2:243:GLU:HB3	1.87	0.57
1:A:235:G:OP1	5:1:48:THR:N	2.37	0.57
2:9:2825:C:H4'	2:9:2826:G:O5'	2.05	0.57
3:B:86:LEU:HD13	3:B:99:PRO:O	2.05	0.56
5:1:121:LEU:O	5:1:125:GLU:HG3	2.06	0.56
5:1:0:SER:CA	5:1:29:VAL:N	2.69	0.56
7:5:44:LYS:HA	7:5:44:LYS:HZ2	1.70	0.56
8:4:96:VAL:HG23	8:4:130:LYS:HE2	1.87	0.56
1:A:127:A:C2'	1:A:128:U:C5'	2.79	0.56
1:A:173:A:C4	1:A:224:G:C2'	2.56	0.56
8:4:125:ARG:NH2	8:4:131:LYS:HZ3	2.04	0.56
1:A:125:G:C4	1:A:226:U:O2	2.47	0.56
1:A:171:U:C3'	1:A:172:A:H5''	2.35	0.56
9:6:17:THR:HG22	9:6:82:ARG:HE	1.71	0.56
9:6:41:ILE:HD12	9:6:64:ASN:HD22	1.71	0.56
1:A:220:C:C3'	1:A:221:C:H5''	2.36	0.55
8:4:106:LYS:HG3	8:4:117:ALA:HB3	1.88	0.55
5:1:-1:HIS:CG	5:1:69:GLY:HA3	2.42	0.55
1:A:220:C:H2'	1:A:221:C:C5'	2.29	0.55
3:B:62:LEU:HD12	3:B:81:ARG:O	2.07	0.55
1:A:127:A:N9	1:A:225:C:C4	2.74	0.55
2:9:2856:A:H5'	9:6:23:ASN:HA	1.89	0.55

Continued on next page...

Continued from previous page...

Atom-1	Atom-2	Interatomic distance (Å)	Clash overlap (Å)
5:1:0:SER:CB	5:1:54:LEU:HD21	2.36	0.55
1:A:173:A:N1	1:A:224:G:N3	2.53	0.55
8:4:109:VAL:HG22	8:4:115:ILE:HD11	1.89	0.55
2:9:2854:A:HO2'	9:6:26:LYS:HE3	1.65	0.55
3:B:76:VAL:HG13	3:B:77:GLN:H	1.71	0.55
5:1:0:SER:C	5:1:29:VAL:H	2.09	0.55
4:W:379:MET:HA	4:W:382:MET:HG3	1.87	0.55
4:W:429:GLN:O	4:W:432:LYS:HG2	2.06	0.55
1:A:125:G:N9	1:A:227:G:O6	2.10	0.55
7:5:27:LYS:HE3	7:5:27:LYS:C	2.28	0.55
2:9:2904:U:O2'	9:6:47:PHE:CE2	2.58	0.55
8:4:83:MET:O	8:4:86:ILE:HG22	2.07	0.54
2:9:2856:A:H5''	9:6:78:ARG:HB2	1.89	0.54
3:B:77:GLN:O	3:B:77:GLN:HG2	2.05	0.54
8:4:73:LEU:HD23	8:4:96:VAL:HG12	1.88	0.54
3:B:60:VAL:HB	3:B:84:VAL:HG12	1.90	0.54
5:1:0:SER:N	5:1:54:LEU:HD21	2.23	0.54
3:B:116:LYS:N	3:B:116:LYS:HD2	2.23	0.54
8:4:125:ARG:HG3	8:4:129:LYS:O	2.08	0.54
2:9:2909:G:O2'	2:9:2910:A:C5'	2.56	0.54
3:B:64:LYS:NZ	3:B:65:ASN:H	2.06	0.54
6:2:192:GLN:O	6:2:196:GLU:HG3	2.08	0.54
1:A:125:G:C4	1:A:227:G:N7	2.74	0.54
7:5:33:LEU:HD13	7:5:48:ILE:HG13	1.89	0.54
2:9:2904:U:C5'	9:6:20:TYR:CD2	2.91	0.53
7:5:34:ARG:C	8:4:75:TYR:CD1	2.79	0.53
1:A:233:U:H3'	1:A:234:A:C5'	2.39	0.53
3:B:73:ASN:HD21	3:B:75:ASP:N	2.05	0.53
7:5:14:LYS:HA	7:5:14:LYS:NZ	2.23	0.53
1:A:208:A:H1'	4:W:380:ASP:O	2.08	0.53
2:9:2856:A:H4'	9:6:78:ARG:CB	2.32	0.53
3:B:88:GLN:O	3:B:91:GLY:N	2.42	0.53
3:B:116:LYS:O	3:B:120:GLN:HG2	2.09	0.53
5:1:29:VAL:O	5:1:33:ILE:HD13	2.09	0.53
1:A:127:A:C4	1:A:225:C:N3	2.77	0.53
4:W:341:LYS:O	4:W:345:PHE:CE1	2.62	0.53
5:1:8:PHE:HB3	5:1:14:VAL:HA	1.91	0.53
6:2:245:SER:O	6:2:256:ALA:HB1	2.09	0.53
7:5:34:ARG:NH1	7:5:48:ILE:CG2	2.70	0.53
2:9:2866:U:O2'	2:9:2867:G:P	2.67	0.53
1:A:195:U:H4'	4:W:411:GLY:O	2.08	0.52

Continued on next page...

Continued from previous page...

Atom-1	Atom-2	Interatomic distance (Å)	Clash overlap (Å)
1:A:127:A:O2'	1:A:224:G:N3	2.34	0.52
1:A:172:A:N1	1:A:224:G:H2'	2.24	0.52
3:B:112:ILE:C	3:B:114:LYS:H	2.13	0.52
2:9:2912:C:H2'	2:9:2913:A:O4'	2.09	0.52
3:B:64:LYS:HZ3	3:B:65:ASN:H	1.55	0.52
3:B:71:GLU:OE2	3:B:78:TYR:HD2	1.92	0.52
2:9:2858:U:H2'	2:9:2859:C:C6	2.44	0.52
3:B:41:VAL:CG1	3:B:42:GLU:N	2.72	0.52
8:4:85:LYS:HB3	8:4:91:THR:OG1	2.10	0.52
1:A:164:G:OP2	1:A:164:G:H8	1.92	0.52
6:2:103:VAL:CG1	6:2:266:ALA:HA	2.40	0.52
2:9:2906:A:H5'	2:9:2907:C:O4'	2.10	0.52
5:1:53:THR:O	5:1:69:GLY:HA2	2.10	0.52
8:4:114:ASP:C	8:4:115:ILE:CG2	2.75	0.52
1:A:126:C:C2	1:A:226:U:C6	2.86	0.51
3:B:64:LYS:HD3	3:B:64:LYS:H	1.71	0.51
8:4:119:LYS:CD	8:4:135:LYS:HZ3	2.13	0.51
1:A:175:G:H1	1:A:221:C:N4	2.08	0.51
1:A:199:A:H8	1:A:199:A:OP1	1.93	0.51
3:B:15:PHE:CZ	3:B:85:GLN:HB2	2.45	0.51
7:5:35:ILE:CA	8:4:75:TYR:CE1	2.87	0.51
6:2:81:ARG:HD3	6:2:246:ALA:O	2.09	0.51
3:B:60:VAL:CG2	3:B:83:ARG:O	2.52	0.51
3:B:93:LEU:HD23	3:B:93:LEU:H	1.75	0.51
3:B:64:LYS:HZ3	3:B:65:ASN:HB2	1.75	0.51
7:5:11:LEU:HD22	7:5:58:VAL:HG22	1.92	0.51
3:B:56:VAL:HG21	3:B:107:TYR:CE2	2.45	0.50
1:A:127:A:C5	1:A:225:C:N4	2.79	0.50
2:9:2905:A:O3'	9:6:50:LYS:HE2	2.06	0.50
8:4:96:VAL:HG21	8:4:130:LYS:HE3	1.94	0.50
8:4:125:ARG:CZ	8:4:131:LYS:CD	2.90	0.50
1:A:126:C:O2'	1:A:226:U:H4'	2.10	0.50
1:A:126:C:C2	1:A:226:U:N3	2.46	0.50
1:A:233:U:C4'	5:1:40:GLU:HB3	2.38	0.50
5:1:10:LYS:HG2	6:2:94:ILE:HD11	1.92	0.50
2:9:2857:C:H5'	9:6:78:ARG:NE	2.26	0.50
1:A:121:U:H2'	1:A:122:U:C6	2.46	0.50
1:A:233:U:H1'	5:1:40:GLU:CA	1.99	0.50
3:B:68:TYR:CE2	3:B:70:ARG:HB2	2.46	0.50
7:5:29:GLU:O	7:5:33:LEU:HG	2.11	0.50
8:4:119:LYS:CE	8:4:135:LYS:HD3	2.41	0.50

Continued on next page...

Continued from previous page...

Atom-1	Atom-2	Interatomic distance (Å)	Clash overlap (Å)
7:5:16:LYS:HE2	7:5:16:LYS:N	2.27	0.50
9:6:52:MET:CE	9:6:83:ILE:HD11	2.42	0.50
1:A:136:G:N3	1:A:214:A:H2	2.09	0.49
7:5:12:TRP:NE1	7:5:61:VAL:HG22	2.23	0.49
9:6:28:LEU:CD1	9:6:43:GLU:HG3	2.42	0.49
1:A:125:G:C8	1:A:227:G:N1	2.76	0.49
2:9:2856:A:OP1	9:6:77:ARG:HB3	2.12	0.49
3:B:24:ASN:ND2	3:B:27:LYS:HG3	2.22	0.49
8:4:125:ARG:CZ	8:4:131:LYS:HG3	2.42	0.49
2:9:2855:G:C4	9:6:23:ASN:CG	2.82	0.49
7:5:7:LYS:NZ	7:5:7:LYS:HA	2.27	0.49
1:A:231:A:H5''	1:A:232:G:OP2	2.12	0.49
4:W:394:LYS:HB3	4:W:394:LYS:NZ	2.27	0.49
1:A:127:A:H2'	1:A:224:G:N2	0.45	0.49
2:9:2885:A:H2'	2:9:2886:C:H6	1.78	0.49
1:A:130:A:H2'	1:A:131:A:H8	1.72	0.49
2:9:2842:G:H2'	2:9:2843:A:H5'	1.95	0.49
2:9:2856:A:H4'	9:6:78:ARG:HG3	0.59	0.49
2:9:2912:C:O2'	2:9:2913:A:H5'	2.12	0.49
4:W:349:LEU:HD22	4:W:359:PHE:CE2	2.45	0.49
4:W:392:GLY:O	4:W:396:PHE:HD1	1.95	0.49
1:A:124:G:N7	1:A:125:G:N7	2.42	0.48
4:W:373:LYS:O	4:W:377:THR:HG23	2.13	0.48
7:5:36:GLN:O	7:5:39:ALA:O	2.31	0.48
8:4:103:LYS:HE3	8:4:103:LYS:C	2.33	0.48
1:A:160:A:H2'	1:A:161:C:C6	2.49	0.48
1:A:192:A:H2'	1:A:193:G:O4'	2.13	0.48
2:9:2903:C:O2'	2:9:2904:U:H5'	2.12	0.48
3:B:29:ILE:HG22	3:B:30:ALA:N	2.28	0.48
2:9:2886:C:O2'	2:9:2887:G:H5'	2.14	0.48
6:2:186:LYS:HD3	6:2:190:LEU:HD23	1.95	0.48
1:A:165:G:N7	1:A:176:A:C6	2.82	0.48
8:4:119:LYS:HD2	8:4:120:VAL:N	2.29	0.48
6:2:170:SER:HB3	6:2:237:LEU:HD23	1.95	0.48
8:4:119:LYS:HZ3	8:4:135:LYS:HD3	1.78	0.48
5:1:13:LEU:HD11	5:1:107:LEU:HD21	1.96	0.48
7:5:16:LYS:HZ2	7:5:65:LYS:HE2	1.78	0.48
7:5:35:ILE:C	8:4:75:TYR:HE1	2.16	0.48
8:4:140:TYR:OH	8:4:145:VAL:HG11	2.14	0.48
9:6:54:THR:CA	9:6:90:GLU:HB2	2.39	0.48
1:A:224:G:H8	1:A:224:G:H5'	1.79	0.48

Continued on next page...

Continued from previous page...

Atom-1	Atom-2	Interatomic distance (Å)	Clash overlap (Å)
2:9:2883:A:H2'	2:9:2884:G:O4'	2.13	0.48
8:4:96:VAL:CG2	8:4:130:LYS:CE	2.92	0.47
8:4:125:ARG:HH22	8:4:131:LYS:NZ	2.11	0.47
2:9:2855:G:N3	9:6:23:ASN:CG	2.68	0.47
1:A:125:G:H2'	1:A:126:C:C6	2.48	0.47
1:A:160:A:H2'	1:A:161:C:O4'	2.14	0.47
2:9:2842:G:C2'	2:9:2843:A:H5'	2.45	0.47
9:6:55:ASN:HD21	9:6:85:ARG:HB3	1.79	0.47
9:6:55:ASN:ND2	9:6:92:ASP:HB2	2.26	0.47
8:4:125:ARG:CZ	8:4:125:ARG:HA	2.45	0.47
1:A:173:A:C2'	1:A:224:G:C5'	2.64	0.47
2:9:2831:C:H2'	2:9:2832:C:H5'	1.96	0.47
2:9:2897:C:O2'	2:9:2898:G:H5'	2.15	0.47
1:A:167:U:H2'	1:A:168:G:O4'	2.15	0.47
2:9:2836:G:H4'	2:9:2837:U:OP1	2.15	0.47
3:B:62:LEU:HD12	3:B:63:GLU:N	2.30	0.47
2:9:2854:A:O2'	9:6:26:LYS:NZ	2.43	0.47
3:B:14:ARG:CZ	3:B:14:ARG:CB	2.88	0.47
3:B:73:ASN:HD21	3:B:75:ASP:HB3	1.80	0.47
4:W:391:ASP:HB3	4:W:394:LYS:HZ2	1.79	0.47
8:4:91:THR:HG22	8:4:135:LYS:CG	2.44	0.47
1:A:171:U:H3'	1:A:172:A:H5''	1.96	0.47
9:6:94:LYS:HB3	9:6:94:LYS:HZ2	1.80	0.47
7:5:35:ILE:HA	7:5:38:VAL:HG12	1.95	0.46
1:A:116:C:H2'	1:A:117:U:C6	2.50	0.46
2:9:2871:G:H2'	2:9:2872:U:C6	2.51	0.46
9:6:40:ALA:HB2	9:6:75:VAL:HG21	1.98	0.46
5:1:56:TYR:HA	5:1:66:PHE:O	2.15	0.46
2:9:2871:G:H2'	2:9:2872:U:H6	1.80	0.46
6:2:103:VAL:HG13	6:2:266:ALA:HA	1.97	0.46
7:5:53:LYS:O	7:5:57:ARG:HD3	2.15	0.46
8:4:144:ASP:OD1	8:4:145:VAL:HG23	2.14	0.46
7:5:5:LYS:NZ	7:5:47:ARG:HD2	2.31	0.46
8:4:110:LYS:HZ2	8:4:115:ILE:N	2.14	0.46
9:6:52:MET:HE1	9:6:83:ILE:HD11	1.96	0.46
2:9:2911:C:O2'	2:9:2912:C:H5'	2.15	0.46
8:4:125:ARG:HD3	8:4:127:ASP:CB	2.45	0.46
9:6:28:LEU:HD11	9:6:40:ALA:HA	1.97	0.46
1:A:146:G:C6	1:A:147:G:C5	3.03	0.45
1:A:223:U:H2'	1:A:224:G:H5''	1.98	0.45
7:5:14:LYS:HB3	7:5:18:ASP:HB2	1.98	0.45

Continued on next page...

Continued from previous page...

Atom-1	Atom-2	Interatomic distance (Å)	Clash overlap (Å)
7:5:38:VAL:HG21	8:4:76:PRO:N	2.31	0.45
3:B:75:ASP:OD1	3:B:76:VAL:N	2.47	0.45
1:A:125:G:N3	1:A:227:G:N7	2.64	0.45
1:A:207:C:C4	1:A:208:A:N7	2.84	0.45
2:9:2856:A:C1'	9:6:23:ASN:ND2	2.58	0.45
3:B:43:ASN:C	3:B:118:ARG:HH22	2.20	0.45
4:W:427:PHE:O	4:W:431:VAL:HG23	2.17	0.45
5:1:0:SER:O	5:1:29:VAL:HG21	2.13	0.45
5:1:68:VAL:HG11	5:1:83:ILE:HD11	1.98	0.45
7:5:59:LEU:O	7:5:59:LEU:HD13	2.17	0.45
8:4:125:ARG:HB3	8:4:126:PRO:C	2.36	0.45
1:A:229:U:H2'	1:A:230:C:C6	2.51	0.45
5:1:20:GLY:C	5:1:22:SER:N	2.69	0.45
7:5:37:LYS:C	7:5:39:ALA:O	2.55	0.45
7:5:37:LYS:N	7:5:41:SER:HB3	2.32	0.45
7:5:65:LYS:O	7:5:66:GLN:HB3	2.16	0.45
1:A:166:U:H2'	1:A:167:U:O4'	2.17	0.45
1:A:127:A:H2'	1:A:224:G:H22	1.14	0.44
1:A:168:G:H3'	1:A:169:C:H5'	1.99	0.44
2:9:2831:C:C2'	2:9:2832:C:H5'	2.46	0.44
3:B:116:LYS:N	3:B:116:LYS:CD	2.80	0.44
8:4:83:MET:CA	8:4:86:ILE:HG22	2.47	0.44
1:A:162:C:H2'	1:A:163:A:C8	2.52	0.44
1:A:172:A:C6	1:A:224:G:HO2'	1.69	0.44
3:B:76:VAL:C	3:B:78:TYR:N	2.70	0.44
3:B:76:VAL:O	3:B:78:TYR:N	2.50	0.44
3:B:35:ILE:HD11	3:B:40:ALA:HA	1.99	0.44
3:B:76:VAL:CG1	3:B:77:GLN:N	2.80	0.44
9:6:25:HIS:CE1	9:6:79:VAL:CG1	2.99	0.44
2:9:2885:A:H2'	2:9:2886:C:C6	2.52	0.44
7:5:36:GLN:HB3	7:5:41:SER:HA	2.00	0.44
8:4:85:LYS:HB3	8:4:91:THR:HG1	1.83	0.44
9:6:56:ASP:H	9:6:91:GLU:HA	1.83	0.44
1:A:163:A:H2'	1:A:164:G:N9	2.32	0.44
1:A:186:C:O5'	1:A:186:C:H6	2.01	0.44
2:9:2846:C:H2'	2:9:2847:G:H8	1.82	0.44
3:B:45:THR:O	3:B:46:ALA:C	2.56	0.44
4:W:344:PRO:C	4:W:346:SER:CB	2.85	0.44
7:5:16:LYS:HG3	7:5:67:ARG:O	2.17	0.44
1:A:124:G:H1	1:A:125:G:H2'	1.31	0.44
6:2:82:LEU:HD23	6:2:258:ILE:HD12	2.00	0.44

Continued on next page...

Continued from previous page...

Atom-1	Atom-2	Interatomic distance (Å)	Clash overlap (Å)
7:5:66:GLN:O	7:5:66:GLN:HG2	2.18	0.44
1:A:138:G:H2'	1:A:139:A:H8	1.83	0.44
1:A:179:G:N2	1:A:180:G:H1'	2.33	0.44
2:9:2859:C:O2'	2:9:2860:G:H5'	2.18	0.44
3:B:88:GLN:HG3	3:B:92:SER:O	2.18	0.44
7:5:47:ARG:O	7:5:51:ILE:HG12	2.17	0.44
8:4:119:LYS:HE2	8:4:135:LYS:HD3	1.99	0.44
3:B:96:VAL:HG23	3:B:97:GLN:N	2.33	0.43
4:W:430:MET:HA	4:W:433:LYS:HB3	2.00	0.43
8:4:110:LYS:HE3	8:4:110:LYS:C	2.37	0.43
9:6:51:ALA:HB3	9:6:52:MET:HG3	1.99	0.43
2:9:2890:A:C2'	2:9:2891:A:OP2	2.65	0.43
8:4:74:LYS:NZ	8:4:74:LYS:HA	2.33	0.43
6:2:268:ILE:HD12	6:2:268:ILE:C	2.39	0.43
1:A:125:G:H2'	1:A:126:C:H6	1.81	0.43
1:A:221:C:N4	1:A:222:G:C6	2.82	0.43
3:B:15:PHE:O	3:B:83:ARG:NH2	2.52	0.43
3:B:116:LYS:HE3	3:B:116:LYS:H	1.83	0.43
7:5:65:LYS:O	7:5:66:GLN:CB	2.66	0.43
8:4:77:LEU:HD13	8:4:95:ILE:HD11	1.99	0.43
1:A:171:U:H3'	1:A:172:A:C5'	2.49	0.43
1:A:117:U:H2'	1:A:118:A:C8	2.53	0.43
2:9:2872:U:H2'	2:9:2873:C:H6	1.84	0.43
2:9:2899:A:O2'	2:9:2900:G:H5'	2.19	0.43
3:B:24:ASN:HD22	3:B:27:LYS:CG	2.22	0.43
3:B:53:CYS:O	3:B:58:LEU:HB2	2.19	0.43
1:A:150:G:O2'	1:A:203:G:N3	2.49	0.43
3:B:23:LEU:HB2	3:B:44:PRO:HG3	2.01	0.43
3:B:73:ASN:ND2	3:B:74:ARG:N	2.67	0.43
5:1:37:LEU:HD12	5:1:37:LEU:C	2.38	0.43
6:2:192:GLN:HG3	6:2:241:PHE:CE1	2.54	0.43
8:4:110:LYS:HZ1	8:4:114:ASP:HA	1.83	0.43
8:4:118:LYS:NZ	8:4:118:LYS:HA	2.33	0.43
2:9:2838:A:H2'	2:9:2839:C:C6	2.54	0.43
3:B:41:VAL:HG12	3:B:42:GLU:N	2.34	0.43
3:B:60:VAL:CB	3:B:84:VAL:HG12	2.49	0.43
3:B:94:CYS:C	3:B:95:LEU:HD23	2.38	0.43
7:5:62:ILE:HG23	7:5:67:ARG:HA	2.01	0.43
2:9:2885:A:O2'	2:9:2886:C:H5'	2.19	0.42
6:2:258:ILE:O	6:2:262:GLU:HG3	2.19	0.42
7:5:66:GLN:O	7:5:67:ARG:CB	2.67	0.42

Continued on next page...

Continued from previous page...

Atom-1	Atom-2	Interatomic distance (Å)	Clash overlap (Å)
4:W:347:GLN:O	4:W:351:MET:HG3	2.18	0.42
7:5:54:SER:CA	7:5:57:ARG:HE	2.26	0.42
8:4:119:LYS:C	8:4:119:LYS:CD	2.85	0.42
8:4:125:ARG:NE	8:4:131:LYS:HG3	2.34	0.42
2:9:2847:G:O2'	2:9:2848:G:H5'	2.19	0.42
2:9:2909:G:H2'	2:9:2910:A:H8	1.83	0.42
1:A:195:U:C4'	4:W:411:GLY:HA3	2.50	0.42
3:B:19:TYR:CE2	3:B:81:ARG:HD3	2.55	0.42
3:B:42:GLU:HG3	3:B:43:ASN:N	2.34	0.42
1:A:160:A:H2'	1:A:161:C:H6	1.84	0.42
4:W:344:PRO:HB2	4:W:345:PHE:H	1.69	0.42
8:4:98:LEU:HA	8:4:130:LYS:HB2	2.01	0.42
1:A:117:U:H2'	1:A:118:A:H8	1.83	0.42
1:A:173:A:O3'	1:A:223:U:O2'	2.38	0.42
2:9:2856:A:O2'	9:6:21:THR:OG1	2.08	0.42
3:B:16:ILE:HG12	3:B:84:VAL:HG22	2.02	0.42
3:B:56:VAL:O	3:B:56:VAL:HG12	2.20	0.42
3:B:93:LEU:N	3:B:93:LEU:CD2	2.77	0.42
5:1:0:SER:C	5:1:29:VAL:N	2.73	0.42
6:2:87:TYR:O	6:2:88:ARG:HG2	2.19	0.42
9:6:48:ALA:O	9:6:52:MET:HB2	2.19	0.42
9:6:83:ILE:HG22	9:6:94:LYS:CB	2.44	0.42
1:A:149:A:C4'	3:B:17:CYS:SG	3.08	0.42
3:B:107:TYR:O	3:B:111:MET:HG2	2.19	0.42
1:A:233:U:C3'	1:A:234:A:C5'	2.98	0.41
3:B:18:ILE:HD12	3:B:105:MET:HG2	2.02	0.41
4:W:344:PRO:O	4:W:345:PHE:C	2.53	0.41
6:2:71:CYS:O	6:2:72:ASP:HB2	2.19	0.41
1:A:171:U:H5'	1:A:172:A:OP2	2.20	0.41
1:A:126:C:C4	1:A:226:U:C2	2.99	0.41
1:A:223:U:H2'	1:A:224:G:C5'	2.49	0.41
2:9:2836:G:O2'	2:9:2837:U:P	2.78	0.41
9:6:84:ALA:O	9:6:92:ASP:HA	2.19	0.41
3:B:22:TYR:CD1	3:B:34:ARG:HG3	2.56	0.41
1:A:126:C:H2'	1:A:127:A:O4'	2.21	0.41
2:9:2858:U:H2'	2:9:2859:C:H6	1.85	0.41
7:5:36:GLN:O	7:5:41:SER:HA	2.20	0.41
8:4:125:ARG:HH22	8:4:131:LYS:CE	2.34	0.41
9:6:59:ILE:HG22	9:6:94:LYS:HD2	2.01	0.41
6:2:103:VAL:HG21	6:2:269:ALA:HB2	2.02	0.41
6:2:174:LEU:HD11	6:2:242:LEU:HG	2.03	0.41

Continued on next page...

Continued from previous page...

Atom-1	Atom-2	Interatomic distance (Å)	Clash overlap (Å)
7:5:5:LYS:HG3	7:5:6:VAL:HG23	2.03	0.41
1:A:151:C:H2'	1:A:152:G:H8	1.86	0.41
2:9:2893:C:O2'	2:9:2894:C:H5'	2.20	0.41
3:B:76:VAL:CG1	3:B:77:GLN:H	2.34	0.41
3:B:88:GLN:O	3:B:89:GLU:C	2.58	0.41
3:B:116:LYS:H	3:B:116:LYS:CE	2.34	0.41
1:A:124:G:N1	1:A:125:G:C4	2.50	0.41
1:A:193:G:H2'	1:A:194:G:O4'	2.21	0.41
2:9:2825:C:C2	2:9:2826:G:C5	3.09	0.41
2:9:2854:A:C2'	9:6:26:LYS:CE	2.83	0.41
2:9:2877:G:N2	2:9:2879:A:H3'	2.36	0.41
8:4:100:ALA:O	8:4:104:LYS:HG3	2.21	0.41
1:A:207:C:O2'	1:A:208:A:H5'	2.21	0.41
2:9:2906:A:P	9:6:50:LYS:HE2	2.61	0.41
9:6:51:ALA:HB3	9:6:52:MET:CG	2.51	0.41
2:9:2845:G:O2'	2:9:2846:C:H5'	2.20	0.40
6:2:68:VAL:C	6:2:75:LYS:HD3	2.41	0.40
6:2:88:ARG:HG2	6:2:88:ARG:HH11	1.85	0.40
8:4:119:LYS:HE2	8:4:135:LYS:CB	2.52	0.40
8:4:124:ILE:HD12	8:4:124:ILE:O	2.20	0.40
1:A:118:A:H2'	1:A:119:A:H5'	2.03	0.40
1:A:127:A:H2'	1:A:128:U:H5'	1.99	0.40
1:A:164:G:OP2	1:A:164:G:C8	2.73	0.40
2:9:2880:A:H2'	2:9:2881:C:O4'	2.21	0.40
5:1:55:LYS:HB2	5:1:55:LYS:HE3	1.87	0.40
6:2:77:LEU:HG	6:2:246:ALA:HB1	2.02	0.40
4:W:412:VAL:HG22	4:W:416:ASP:OD2	2.20	0.40
8:4:106:LYS:O	8:4:109:VAL:HG12	2.20	0.40
9:6:54:THR:HA	9:6:90:GLU:CB	2.41	0.40
9:6:20:TYR:CE1	9:6:52:MET:HE3	2.56	0.40
1:A:182:G:H21	1:A:215:A:H62	1.68	0.40

There are no symmetry-related clashes.

5.3 Torsion angles [i](#)

5.3.1 Protein backbone [i](#)

In the following table, the Percentiles column shows the percent Ramachandran outliers of the chain as a percentile score with respect to all PDB entries followed by that with respect to all EM entries.

The Analysed column shows the number of residues for which the backbone conformation was analysed, and the total number of residues.

Mol	Chain	Analysed	Favoured	Allowed	Outliers	Percentiles	
3	B	105/108 (97%)	87 (83%)	11 (10%)	7 (7%)	1	15
4	W	107/109 (98%)	100 (94%)	2 (2%)	5 (5%)	2	21
5	1	115/185 (62%)	107 (93%)	7 (6%)	1 (1%)	17	57
6	2	182/214 (85%)	177 (97%)	5 (3%)	0	100	100
7	5	62/124 (50%)	55 (89%)	2 (3%)	5 (8%)	1	12
8	4	79/152 (52%)	71 (90%)	4 (5%)	4 (5%)	2	19
9	6	79/123 (64%)	66 (84%)	10 (13%)	3 (4%)	3	24
All	All	729/1015 (72%)	663 (91%)	41 (6%)	25 (3%)	6	26

All (25) Ramachandran outliers are listed below:

Mol	Chain	Res	Type
3	B	42	GLU
3	B	75	ASP
4	W	344	PRO
4	W	345	PHE
4	W	362	LYS
7	5	39	ALA
7	5	45	LEU
8	4	101	ASP
8	4	125	ARG
9	6	24	LEU
9	6	52	MET
9	6	90	GLU
3	B	99	PRO
4	W	346	SER
7	5	66	GLN
8	4	127	ASP
8	4	141	ASP
7	5	38	VAL
7	5	43	SER
3	B	64	LYS
3	B	77	GLN
5	1	23	ASP
4	W	363	GLY
3	B	56	VAL
3	B	96	VAL

5.3.2 Protein sidechains [i](#)

In the following table, the Percentiles column shows the percent sidechain outliers of the chain as a percentile score with respect to all PDB entries followed by that with respect to all EM entries.

The Analysed column shows the number of residues for which the sidechain conformation was analysed, and the total number of residues.

Mol	Chain	Analysed	Rotameric	Outliers	Percentiles	
3	B	96/97 (99%)	92 (96%)	4 (4%)	30	54
4	W	96/96 (100%)	91 (95%)	5 (5%)	23	48
5	1	115/166 (69%)	111 (96%)	4 (4%)	36	59
6	2	164/182 (90%)	163 (99%)	1 (1%)	86	92
7	5	55/109 (50%)	44 (80%)	11 (20%)	1	7
8	4	72/128 (56%)	53 (74%)	19 (26%)	0	3
9	6	72/108 (67%)	51 (71%)	21 (29%)	0	2
All	All	670/886 (76%)	605 (90%)	65 (10%)	12	27

All (65) residues with a non-rotameric sidechain are listed below:

Mol	Chain	Res	Type
3	B	39	LYS
3	B	64	LYS
3	B	93	LEU
3	B	116	LYS
4	W	349	LEU
4	W	365	GLU
4	W	383	ASN
4	W	412	VAL
4	W	427	PHE
5	1	5	PHE
5	1	13	LEU
5	1	37	LEU
5	1	40	GLU
6	2	159	GLN
7	5	7	LYS
7	5	14	LYS
7	5	16	LYS
7	5	21	LYS
7	5	25	GLU
7	5	27	LYS

Continued on next page...

Continued from previous page...

Mol	Chain	Res	Type
7	5	38	VAL
7	5	44	LYS
7	5	46	ASN
7	5	57	ARG
7	5	63	ASN
8	4	70	TYR
8	4	74	LYS
8	4	80	GLU
8	4	87	GLU
8	4	90	ASN
8	4	97	ASP
8	4	99	LYS
8	4	101	ASP
8	4	103	LYS
8	4	104	LYS
8	4	110	LYS
8	4	115	ILE
8	4	118	LYS
8	4	119	LYS
8	4	125	ARG
8	4	129	LYS
8	4	135	LYS
8	4	141	ASP
8	4	147	ASN
9	6	18	ARG
9	6	23	ASN
9	6	26	LYS
9	6	27	ARG
9	6	28	LEU
9	6	34	LYS
9	6	57	VAL
9	6	58	ARG
9	6	59	ILE
9	6	62	LYS
9	6	65	LYS
9	6	73	ARG
9	6	77	ARG
9	6	80	ARG
9	6	85	ARG
9	6	86	LYS
9	6	87	ARG
9	6	88	ASN

Continued on next page...

Continued from previous page...

Mol	Chain	Res	Type
9	6	90	GLU
9	6	91	GLU
9	6	94	LYS

Sometimes sidechains can be flipped to improve hydrogen bonding and reduce clashes. All (21) such sidechains are listed below:

Mol	Chain	Res	Type
3	B	24	ASN
3	B	59	ASN
3	B	65	ASN
3	B	73	ASN
3	B	88	GLN
4	W	383	ASN
4	W	385	GLN
4	W	429	GLN
5	1	49	HIS
5	1	99	GLN
6	2	91	GLN
6	2	194	GLN
7	5	22	GLN
7	5	63	ASN
7	5	66	GLN
8	4	71	GLN
8	4	116	GLN
9	6	23	ASN
9	6	29	HIS
9	6	39	ASN
9	6	64	ASN

5.3.3 RNA [i](#)

Mol	Chain	Analysed	Backbone Outliers	Pucker Outliers
1	A	124/127 (97%)	22 (17%)	1 (0%)
2	9	89/90 (98%)	10 (11%)	4 (4%)
All	All	213/217 (98%)	32 (15%)	5 (2%)

All (32) RNA backbone outliers are listed below:

Mol	Chain	Res	Type
1	A	128	U

Continued on next page...

Continued from previous page...

Mol	Chain	Res	Type
1	A	129	C
1	A	164	G
1	A	168	G
1	A	169	C
1	A	171	U
1	A	172	A
1	A	173	A
1	A	174	G
1	A	176	A
1	A	177	G
1	A	187	G
1	A	191	C
1	A	213	A
1	A	214	A
1	A	215	A
1	A	219	C
1	A	221	C
1	A	224	G
1	A	227	G
1	A	232	G
1	A	234	A
2	9	2826	G
2	9	2827	A
2	9	2837	U
2	9	2850	C
2	9	2867	G
2	9	2876	G
2	9	2890	A
2	9	2891	A
2	9	2903	C
2	9	2914	A

All (5) RNA pucker outliers are listed below:

Mol	Chain	Res	Type
1	A	212	C
2	9	2836	G
2	9	2849	U
2	9	2866	U
2	9	2890	A

5.4 Non-standard residues in protein, DNA, RNA chains [i](#)

There are no non-standard protein/DNA/RNA residues in this entry.

5.5 Carbohydrates [i](#)

There are no monosaccharides in this entry.

5.6 Ligand geometry [i](#)

There are no ligands in this entry.

5.7 Other polymers [i](#)

There are no such residues in this entry.

5.8 Polymer linkage issues [i](#)

The following chains have linkage breaks:

Mol	Chain	Number of breaks
5	1	3
1	A	2
4	W	2
7	5	1

All chain breaks are listed below:

Model	Chain	Residue-1	Atom-1	Residue-2	Atom-2	Distance (Å)
1	1	0:SER	C	1:MET	N	17.58
1	1	27:GLY	C	28:PRO	N	7.21
1	1	52:LEU	C	53:THR	N	5.58
1	A	124:G	O3'	125:G	P	4.22
1	A	221:C	O3'	222:G	P	3.26
1	W	362:LYS	C	363:GLY	N	1.64
1	5	38:VAL	C	39:ALA	N	1.61
1	W	345:PHE	C	346:SER	N	0.91

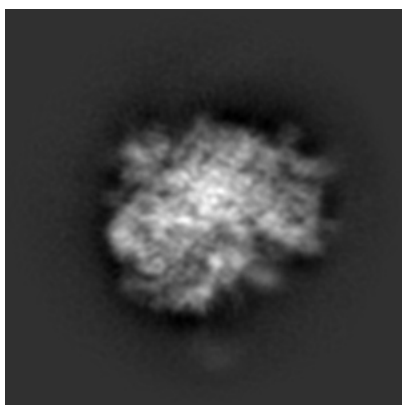
6 Map visualisation [i](#)

This section contains visualisations of the EMDB entry EMD-1217. These allow visual inspection of the internal detail of the map and identification of artifacts.

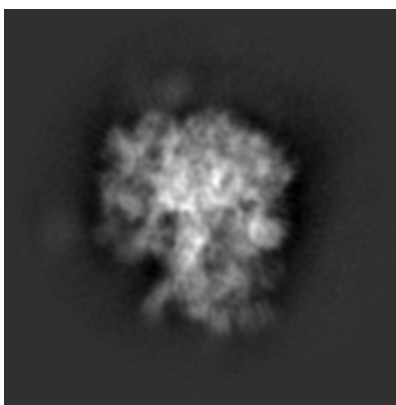
No raw map or half-maps were deposited for this entry and therefore no images, graphs, etc. pertaining to the raw map can be shown.

6.1 Orthogonal projections [i](#)

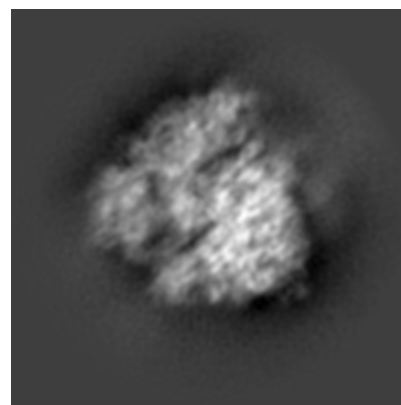
6.1.1 Primary map



X



Y

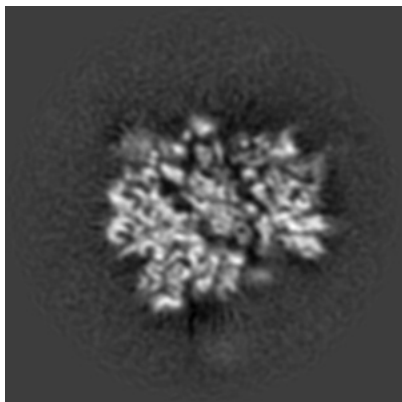


Z

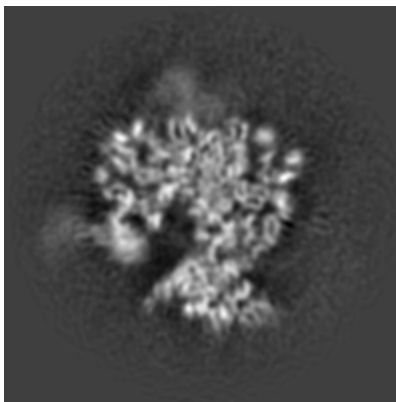
The images above show the map projected in three orthogonal directions.

6.2 Central slices [i](#)

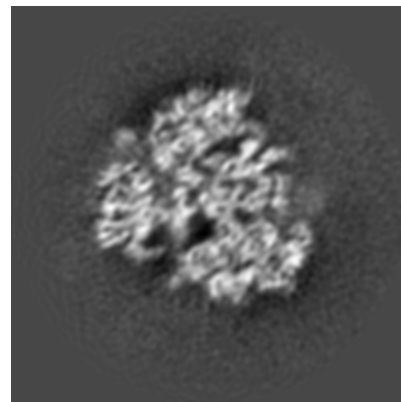
6.2.1 Primary map



X Index: 184



Y Index: 184

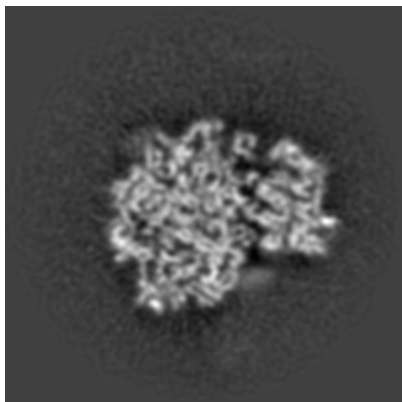


Z Index: 184

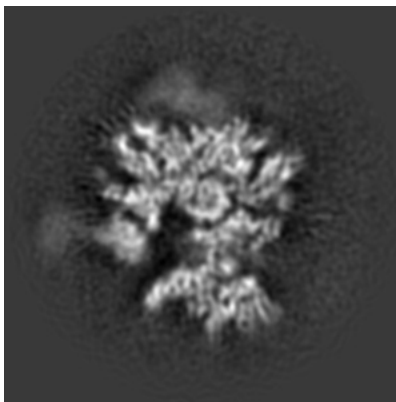
The images above show central slices of the map in three orthogonal directions.

6.3 Largest variance slices [i](#)

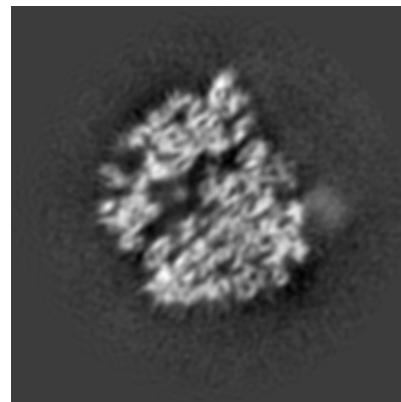
6.3.1 Primary map



X Index: 192



Y Index: 190



Z Index: 169

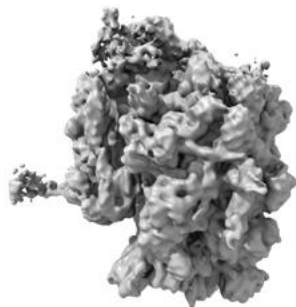
The images above show the largest variance slices of the map in three orthogonal directions.

6.4 Orthogonal surface views [i](#)

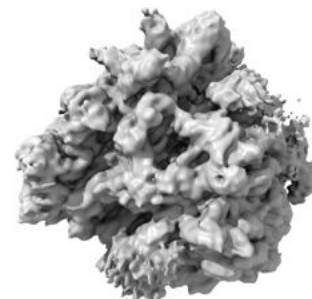
6.4.1 Primary map



X



Y



Z

The images above show the 3D surface view of the map at the recommended contour level 0.173. These images, in conjunction with the slice images, may facilitate assessment of whether an appropriate contour level has been provided.

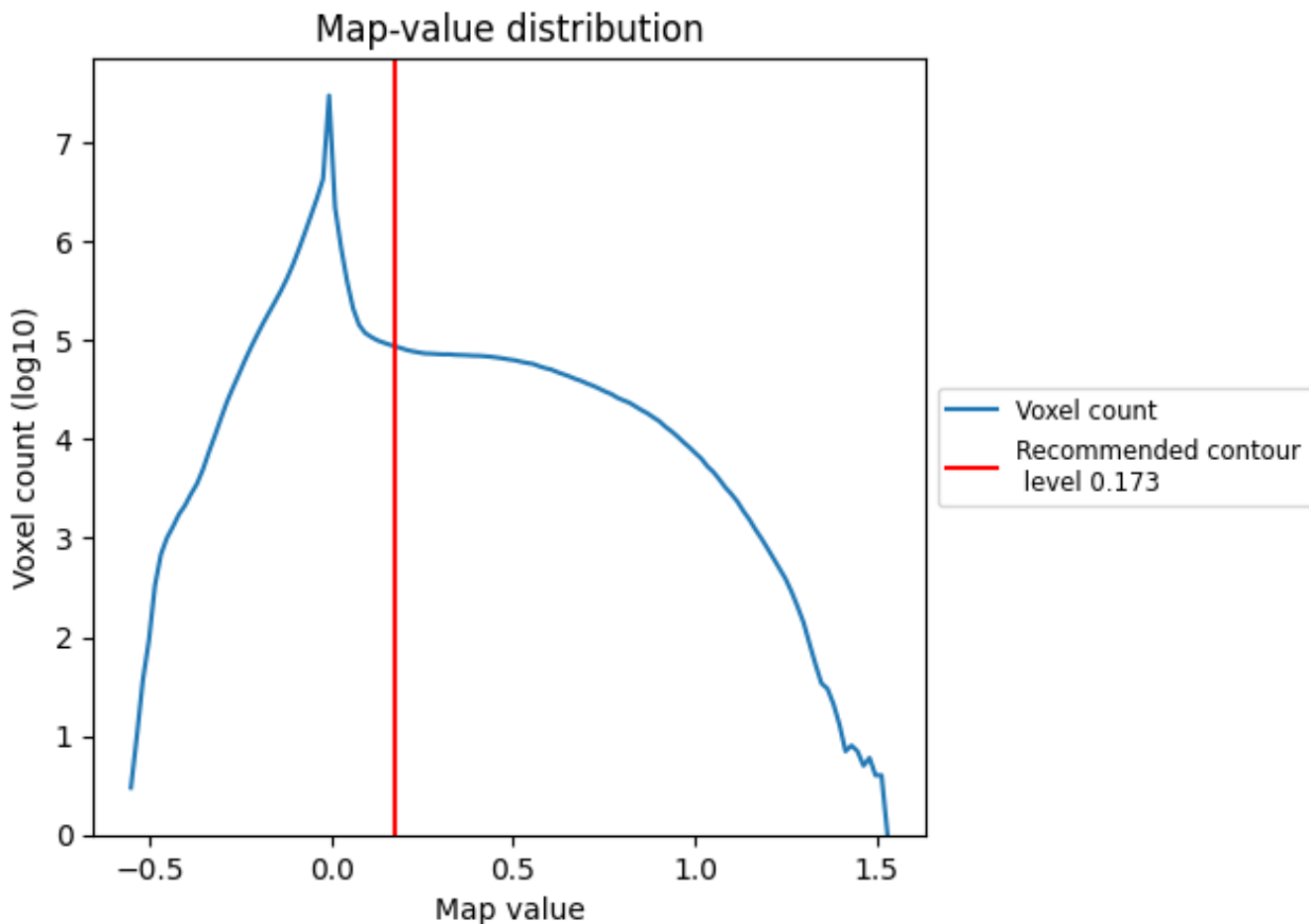
6.5 Mask visualisation

This section was not generated. No masks/segmentation were deposited.

7 Map analysis [i](#)

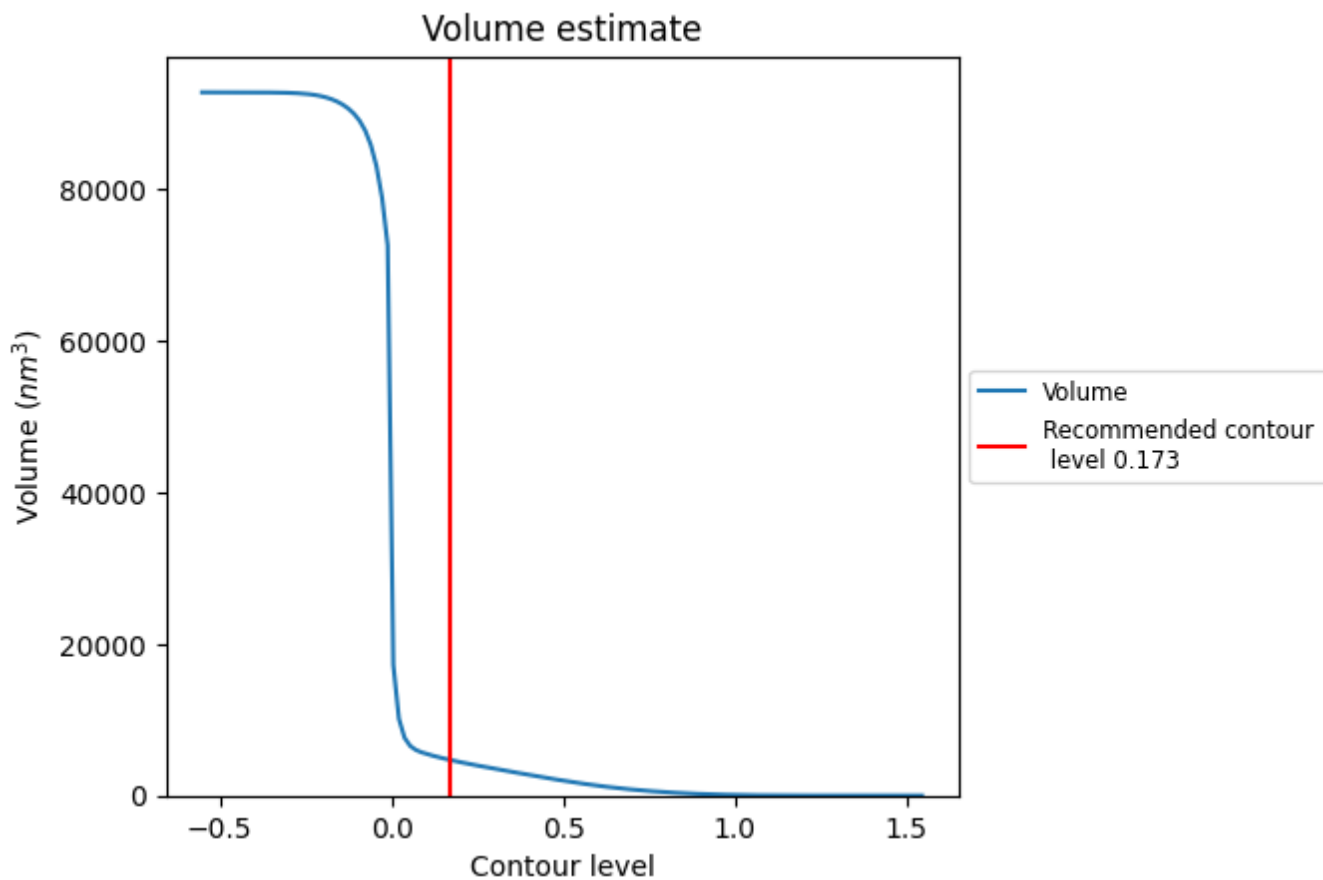
This section contains the results of statistical analysis of the map.

7.1 Map-value distribution [i](#)



The map-value distribution is plotted in 128 intervals along the x-axis. The y-axis is logarithmic. A spike in this graph at zero usually indicates that the volume has been masked.

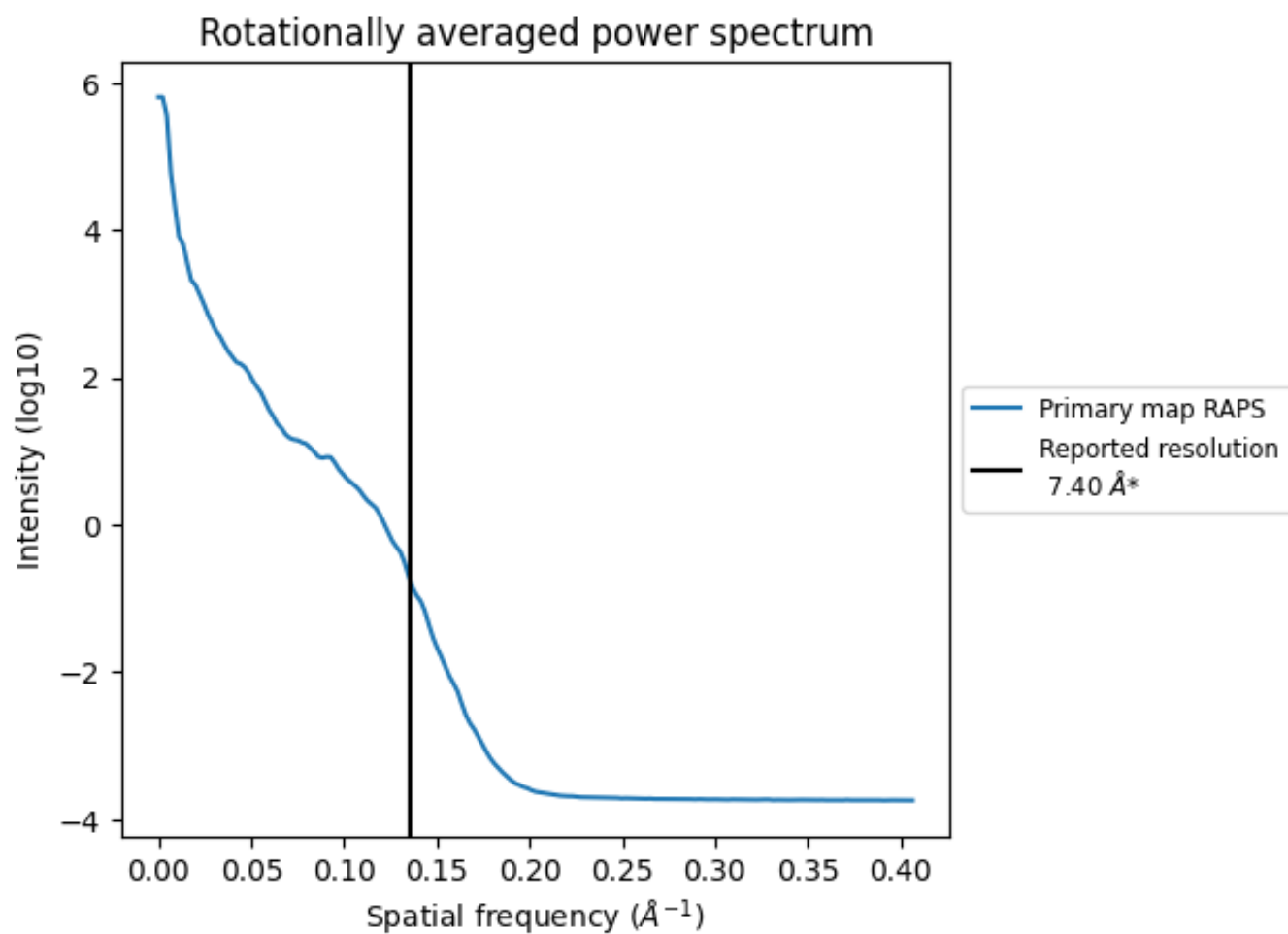
7.2 Volume estimate [i](#)



The volume at the recommended contour level is 4683 nm^3 ; this corresponds to an approximate mass of 4230 kDa.

The volume estimate graph shows how the enclosed volume varies with the contour level. The recommended contour level is shown as a vertical line and the intersection between the line and the curve gives the volume of the enclosed surface at the given level.

7.3 Rotationally averaged power spectrum [i](#)



*Reported resolution corresponds to spatial frequency of 0.135\AA^{-1}

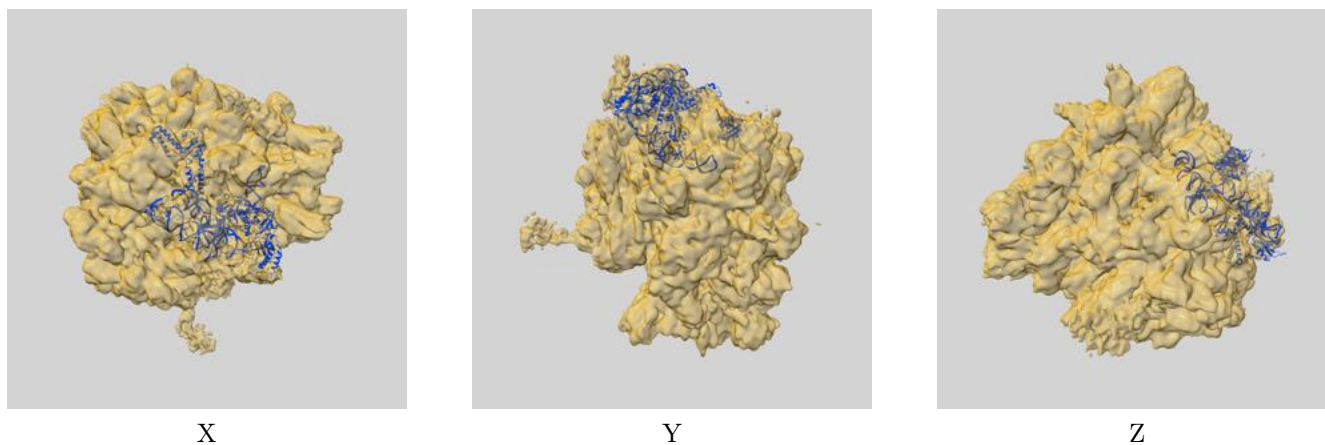
8 Fourier-Shell correlation

This section was not generated. No FSC curve or half-maps provided.

9 Map-model fit [i](#)

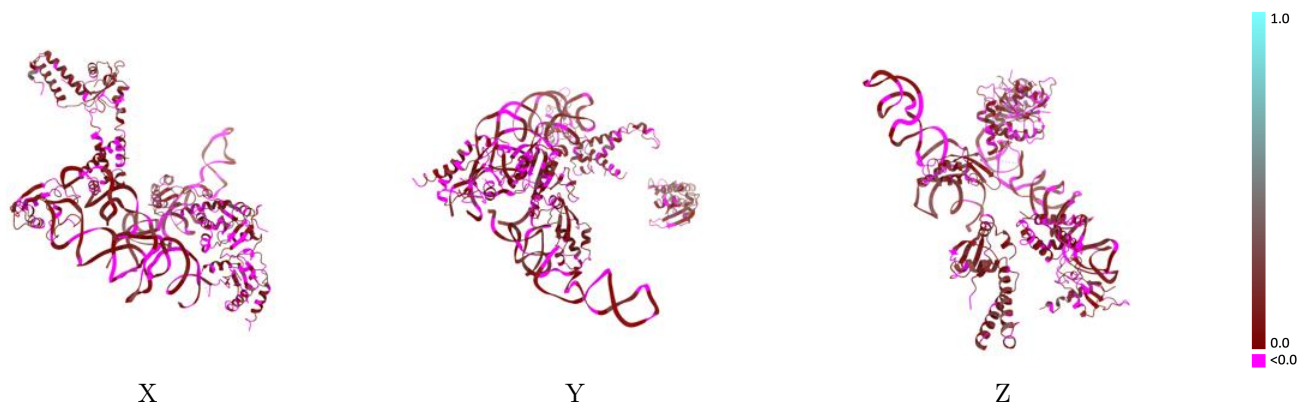
This section contains information regarding the fit between EMDB map EMD-1217 and PDB model 2GO5. Per-residue inclusion information can be found in section 3 on page 6.

9.1 Map-model overlay [i](#)



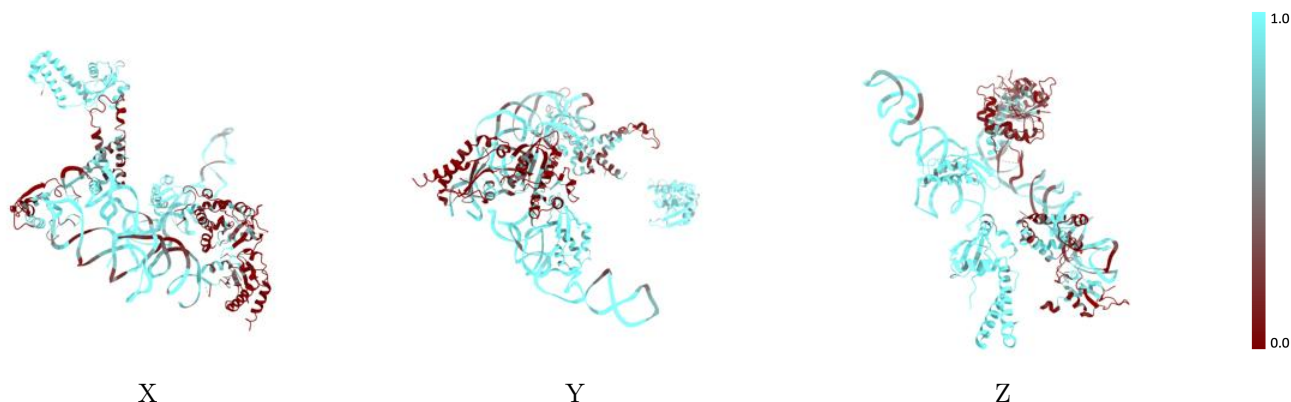
The images above show the 3D surface view of the map at the recommended contour level 0.173 at 50% transparency in yellow overlaid with a ribbon representation of the model coloured in blue. These images allow for the visual assessment of the quality of fit between the atomic model and the map.

9.2 Q-score mapped to coordinate model [\(i\)](#)



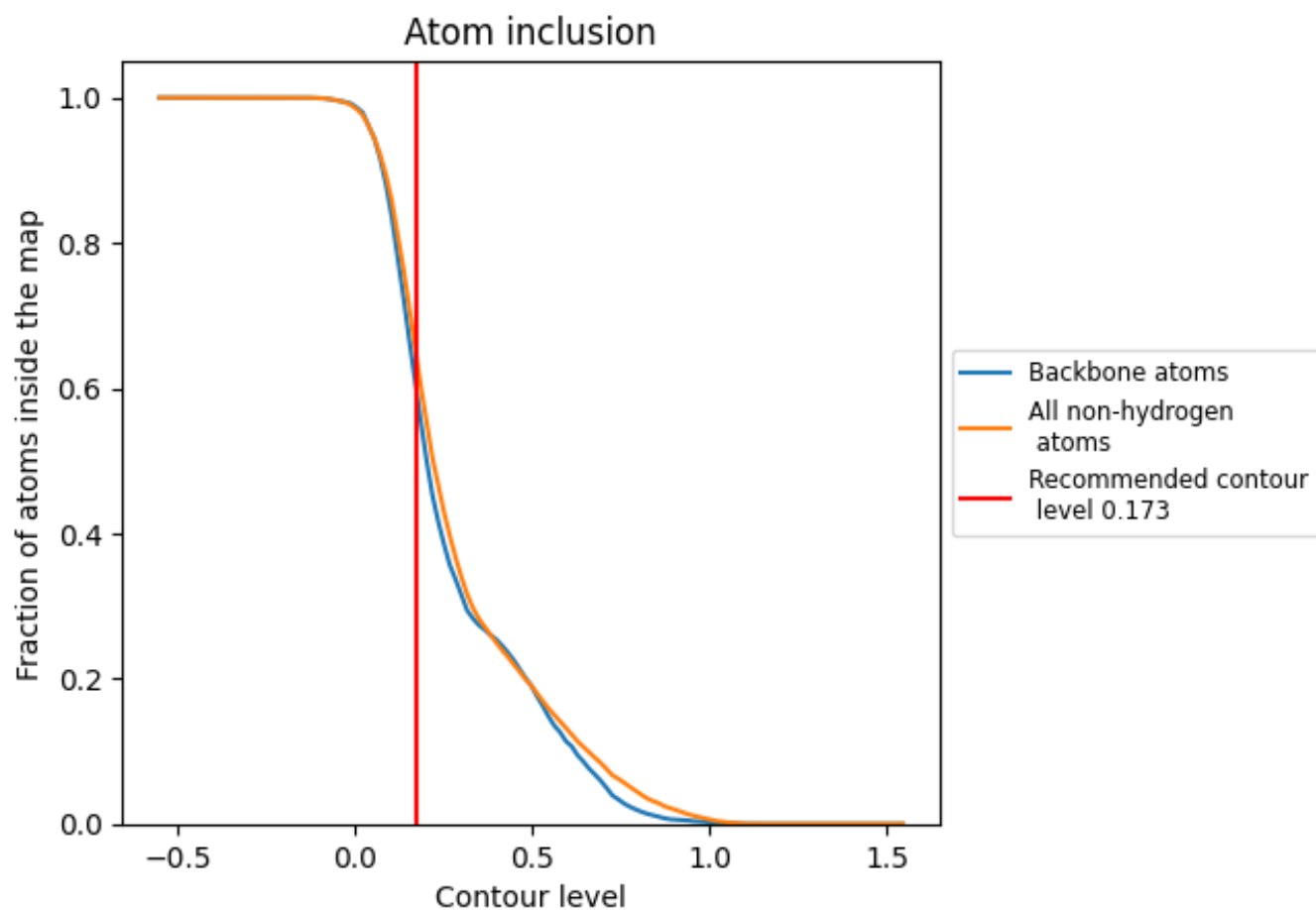
The images above show the model with each residue coloured according to its Q-score. This shows their resolvability in the map with higher Q-score values reflecting better resolvability. Please note: Q-score is calculating the resolvability of atoms, and thus high values are only expected at resolutions at which atoms can be resolved. Low Q-score values may therefore be expected for many entries.

9.3 Atom inclusion mapped to coordinate model [\(i\)](#)



The images above show the model with each residue coloured according to its atom inclusion. This shows to what extent they are inside the map at the recommended contour level (0.173).



















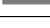

9.4 Atom inclusion [i](#)



At the recommended contour level, 60% of all backbone atoms, 65% of all non-hydrogen atoms, are inside the map.

9.5 Map-model fit summary

The table lists the average atom inclusion at the recommended contour level (0.173) and Q-score for the entire model and for each chain.

Chain	Atom inclusion	Q-score
All	 0.6473	 0.0550
1	 0.1992	 0.0270
2	 0.2674	 0.0220
4	 0.9225	 0.1230
5	 0.9513	 0.1440
6	 0.9660	 0.0990
9	 0.9266	 0.0550
A	 0.7331	 0.0490
B	 0.4443	 0.0560
W	 0.4900	 0.0300

