



Full wwPDB X-ray Structure Validation Report ⓘ

Oct 15, 2023 – 05:42 PM EDT

PDB ID : 2E3X
Title : Crystal structure of Russell's viper venom metalloproteinase
Authors : Igarashi, T.; Takeda, S.
Deposited on : 2006-11-30
Resolution : 2.91 Å(reported)

This is a Full wwPDB X-ray Structure Validation Report for a publicly released PDB entry.

We welcome your comments at validation@mail.wwpdb.org

A user guide is available at

<https://www.wwpdb.org/validation/2017/XrayValidationReportHelp>

with specific help available everywhere you see the ⓘ symbol.

The types of validation reports are described at

<http://www.wwpdb.org/validation/2017/FAQs#types>.

The following versions of software and data (see [references ⓘ](#)) were used in the production of this report:

MolProbity : 4.02b-467
Mogul : 1.8.5 (274361), CSD as541be (2020)
Xtriage (Phenix) : 1.13
EDS : 2.36
buster-report : 1.1.7 (2018)
Percentile statistics : 20191225.v01 (using entries in the PDB archive December 25th 2019)
Refmac : 5.8.0158
CCP4 : 7.0.044 (Gargrove)
Ideal geometry (proteins) : Engh & Huber (2001)
Ideal geometry (DNA, RNA) : Parkinson et al. (1996)
Validation Pipeline (wwPDB-VP) : 2.36

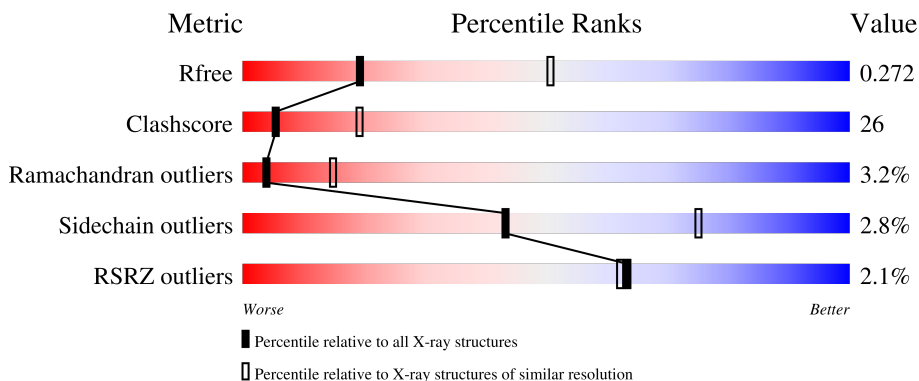
1 Overall quality at a glance

The following experimental techniques were used to determine the structure:

X-RAY DIFFRACTION

The reported resolution of this entry is 2.91 Å.

Percentile scores (ranging between 0-100) for global validation metrics of the entry are shown in the following graphic. The table shows the number of entries on which the scores are based.



Metric	Whole archive (#Entries)	Similar resolution (#Entries, resolution range(Å))
R_{free}	130704	2307 (2.94-2.90)
Clashscore	141614	2531 (2.94-2.90)
Ramachandran outliers	138981	2462 (2.94-2.90)
Sidechain outliers	138945	2464 (2.94-2.90)
RSRZ outliers	127900	2248 (2.94-2.90)

The table below summarises the geometric issues observed across the polymeric chains and their fit to the electron density. The red, orange, yellow and green segments of the lower bar indicate the fraction of residues that contain outliers for ≥ 3 , 2, 1 and 0 types of geometric quality criteria respectively. A grey segment represents the fraction of residues that are not modelled. The numeric value for each fraction is indicated below the corresponding segment, with a dot representing fractions $\leq 5\%$. The upper red bar (where present) indicates the fraction of residues that have poor fit to the electron density. The numeric value is given above the bar.

Mol	Chain	Length	Quality of chain
1	A	427	
2	B	134	
3	C	122	
4	D	2	
5	E	4	

The following table lists non-polymeric compounds, carbohydrate monomers and non-standard residues in protein, DNA, RNA chains that are outliers for geometric or electron-density-fit criteria:

Mol	Type	Chain	Res	Chirality	Geometry	Clashes	Electron density
5	MAN	E	3	X	-	-	-
5	MAN	E	4	X	-	-	X

2 Entry composition [i](#)

There are 9 unique types of molecules in this entry. The entry contains 5438 atoms, of which 0 are hydrogens and 0 are deuteriums.

In the tables below, the ZeroOcc column contains the number of atoms modelled with zero occupancy, the AltConf column contains the number of residues with at least one atom in alternate conformation and the Trace column contains the number of residues modelled with at most 2 atoms.

- Molecule 1 is a protein called Coagulation factor X-activating enzyme heavy chain.

Mol	Chain	Residues	Atoms					ZeroOcc	AltConf	Trace
			Total	C	N	O	S			
1	A	416	3235	1983	584	620	48	0	0	0

There are 3 discrepancies between the modelled and reference sequences:

Chain	Residue	Modelled	Actual	Comment	Reference
A	127	GLY	GLU	SEE REMARK 999	UNP Q7LZ61
A	?	-	THR	SEE REMARK 999	UNP Q7LZ61
A	?	-	ARG	SEE REMARK 999	UNP Q7LZ61

- Molecule 2 is a protein called Coagulation factor X-activating enzyme light chain 2.

Mol	Chain	Residues	Atoms					ZeroOcc	AltConf	Trace
			Total	C	N	O	S			
2	B	129	1078	684	179	203	12	0	0	0

- Molecule 3 is a protein called Coagulation factor X-activating enzyme light chain 1.

Mol	Chain	Residues	Atoms					ZeroOcc	AltConf	Trace
			Total	C	N	O	S			
3	C	120	985	628	164	182	11	0	0	0

- Molecule 4 is an oligosaccharide called 2-acetamido-2-deoxy-beta-D-glucopyranose-(1-4)-2-acetamido-2-deoxy-beta-D-glucopyranose.



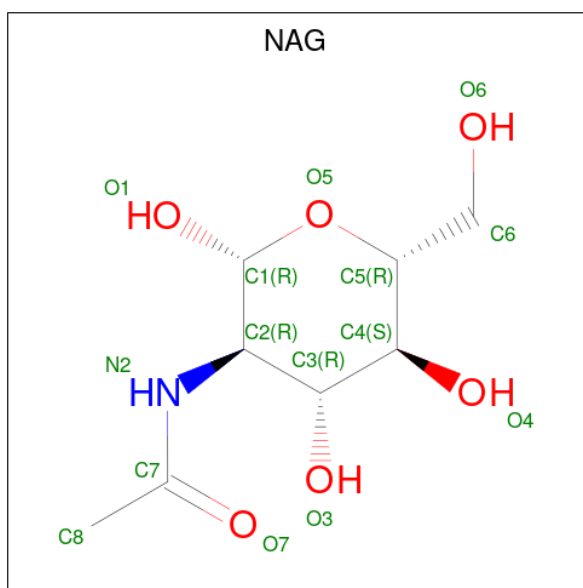
Mol	Chain	Residues	Atoms				ZeroOcc	AltConf	Trace
			Total	C	N	O			
4	D	2	28	16	2	10	0	0	0

- Molecule 5 is an oligosaccharide called alpha-D-mannopyranose-(1-6)-alpha-D-mannopyranose-(1-4)-2-acetamido-2-deoxy-beta-D-glucopyranose-(1-4)-2-acetamido-2-deoxy-beta-D-glucopyranose.



Mol	Chain	Residues	Atoms				ZeroOcc	AltConf	Trace
			Total	C	N	O			
5	E	4	50	28	2	20	0	0	0

- Molecule 6 is 2-acetamido-2-deoxy-beta-D-glucopyranose (three-letter code: NAG) (formula: $C_8H_{15}NO_6$).



Mol	Chain	Residues	Atoms				ZeroOcc	AltConf
			Total	C	N	O		
6	A	1	14	8	1	5	0	0
6	B	1	14	8	1	5	0	0

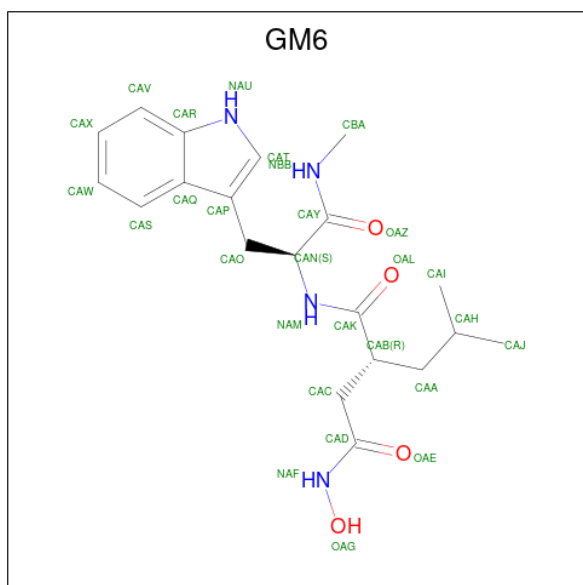
- Molecule 7 is ZINC ION (three-letter code: ZN) (formula: Zn).

Mol	Chain	Residues	Atoms		ZeroOcc	AltConf
7	A	1	Total	Zn	0	0
			1	1		

- Molecule 8 is CALCIUM ION (three-letter code: CA) (formula: Ca).

Mol	Chain	Residues	Atoms	ZeroOcc	AltConf
8	A	4	Total Ca 4 4	0	0
8	B	1	Total Ca 1 1	0	0

- Molecule 9 is 3-(N-HYDROXYCARBOXAMIDO)-2-ISOBUTYLPROPANOYL-TRP-METHYLAMIDE (three-letter code: GM6) (formula: C₂₀H₂₈N₄O₄).

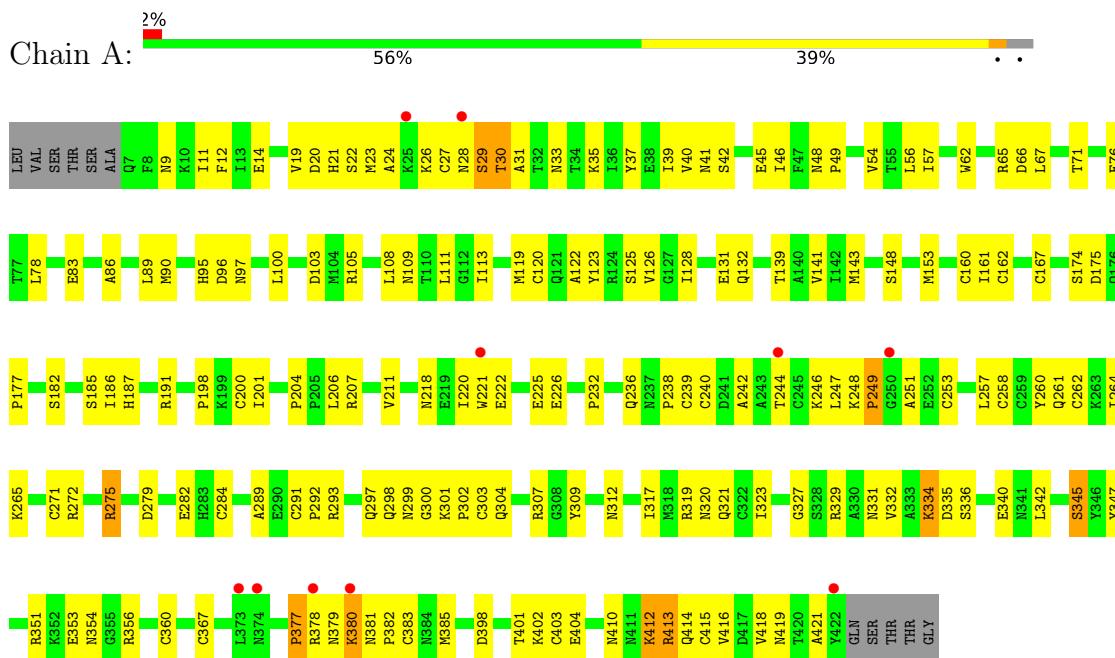


Mol	Chain	Residues	Atoms	ZeroOcc	AltConf
9	A	1	Total C N O 28 4 4	0	0

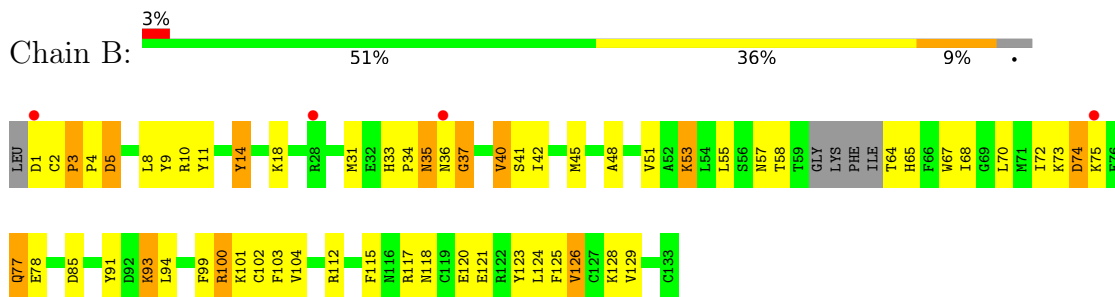
3 Residue-property plots [i](#)

These plots are drawn for all protein, RNA, DNA and oligosaccharide chains in the entry. The first graphic for a chain summarises the proportions of the various outlier classes displayed in the second graphic. The second graphic shows the sequence view annotated by issues in geometry and electron density. Residues are color-coded according to the number of geometric quality criteria for which they contain at least one outlier: green = 0, yellow = 1, orange = 2 and red = 3 or more. A red dot above a residue indicates a poor fit to the electron density ($RSRZ > 2$). Stretches of 2 or more consecutive residues without any outlier are shown as a green connector. Residues present in the sample, but not in the model, are shown in grey.

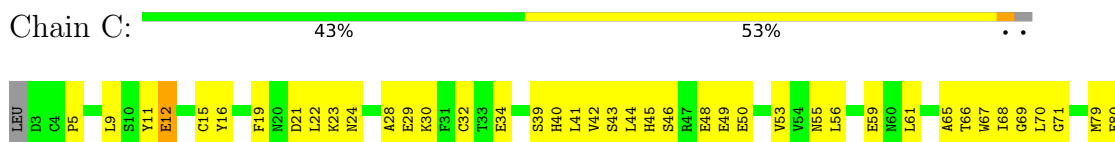
- Molecule 1: Coagulation factor X-activating enzyme heavy chain



- Molecule 2: Coagulation factor X-activating enzyme light chain 2

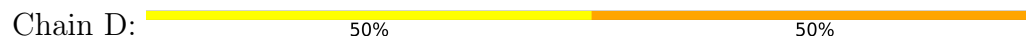


- Molecule 3: Coagulation factor X-activating enzyme light chain 1





- Molecule 4: 2-acetamido-2-deoxy-beta-D-glucopyranose-(1-4)-2-acetamido-2-deoxy-beta-D-glucopyranose



- Molecule 5: alpha-D-mannopyranose-(1-6)-alpha-D-mannopyranose-(1-4)-2-acetamido-2-deoxy-beta-D-glucopyranose-(1-4)-2-acetamido-2-deoxy-beta-D-glucopyranose



4 Data and refinement statistics

Property	Value	Source
Space group	P 21 21 21	Depositor
Cell constants a, b, c, α , β , γ	70.35Å 91.73Å 152.93Å 90.00° 90.00° 90.00°	Depositor
Resolution (Å)	44.60 – 2.91 44.56 – 2.91	Depositor EDS
% Data completeness (in resolution range)	95.9 (44.60-2.91) 95.9 (44.56-2.91)	Depositor EDS
R_{merge}	0.07	Depositor
R_{sym}	(Not available)	Depositor
$\langle I/\sigma(I) \rangle$ ¹	7.35 (at 2.90Å)	Xtrriage
Refinement program	CNS 1.1	Depositor
R, R_{free}	0.218 , 0.273 0.212 , 0.272	Depositor DCC
R_{free} test set	1084 reflections (5.05%)	wwPDB-VP
Wilson B-factor (Å ²)	65.0	Xtrriage
Anisotropy	0.761	Xtrriage
Bulk solvent k_{sol} (e/Å ³), B_{sol} (Å ²)	0.30 , 60.8	EDS
L-test for twinning ²	$\langle L \rangle = 0.50$, $\langle L^2 \rangle = 0.33$	Xtrriage
Estimated twinning fraction	No twinning to report.	Xtrriage
F_o, F_c correlation	0.93	EDS
Total number of atoms	5438	wwPDB-VP
Average B, all atoms (Å ²)	73.0	wwPDB-VP

Xtrriage's analysis on translational NCS is as follows: *The largest off-origin peak in the Patterson function is 3.40% of the height of the origin peak. No significant pseudotranslation is detected.*

¹Intensities estimated from amplitudes.

²Theoretical values of $\langle |L| \rangle$, $\langle L^2 \rangle$ for acentric reflections are 0.5, 0.333 respectively for untwinned datasets, and 0.375, 0.2 for perfectly twinned datasets.

5 Model quality [i](#)

5.1 Standard geometry [i](#)

Bond lengths and bond angles in the following residue types are not validated in this section: ZN, CA, NAG, MAN, GM6

The Z score for a bond length (or angle) is the number of standard deviations the observed value is removed from the expected value. A bond length (or angle) with $|Z| > 5$ is considered an outlier worth inspection. RMSZ is the root-mean-square of all Z scores of the bond lengths (or angles).

Mol	Chain	Bond lengths		Bond angles	
		RMSZ	# Z >5	RMSZ	# Z >5
1	A	0.28	0/3298	0.56	0/4453
2	B	0.32	0/1108	0.58	0/1488
3	C	0.29	0/1012	0.53	0/1366
All	All	0.29	0/5418	0.56	0/7307

There are no bond length outliers.

There are no bond angle outliers.

There are no chirality outliers.

There are no planarity outliers.

5.2 Too-close contacts [i](#)

In the following table, the Non-H and H(model) columns list the number of non-hydrogen atoms and hydrogen atoms in the chain respectively. The H(added) column lists the number of hydrogen atoms added and optimized by MolProbity. The Clashes column lists the number of clashes within the asymmetric unit, whereas Symm-Clashes lists symmetry-related clashes.

Mol	Chain	Non-H	H(model)	H(added)	Clashes	Symm-Clashes
1	A	3235	0	3075	150	0
2	B	1078	0	1002	72	0
3	C	985	0	937	62	0
4	D	28	0	25	3	0
5	E	50	0	43	2	0
6	A	14	0	13	0	0
6	B	14	0	13	1	0
7	A	1	0	0	0	0
8	A	4	0	0	0	0
8	B	1	0	0	0	0

Continued on next page...

Continued from previous page...

Mol	Chain	Non-H	H(model)	H(added)	Clashes	Symm-Clashes
9	A	28	0	27	4	0
All	All	5438	0	5135	276	0

The all-atom clashscore is defined as the number of clashes found per 1000 atoms (including hydrogen atoms). The all-atom clashscore for this structure is 26.

All (276) close contacts within the same asymmetric unit are listed below, sorted by their clash magnitude.

Atom-1	Atom-2	Interatomic distance (Å)	Clash overlap (Å)
1:A:248:LYS:HB3	1:A:249:PRO:HD2	1.29	1.10
1:A:226:GLU:HG2	1:A:247:LEU:HG	1.53	0.90
1:A:351:ARG:HH21	1:A:412:LYS:HG2	1.35	0.89
2:B:93:LYS:HB2	2:B:93:LYS:NZ	1.89	0.86
2:B:64:THR:HG22	2:B:65:HIS:H	1.39	0.85
1:A:382:PRO:HD2	2:B:10:ARG:NH2	1.92	0.85
1:A:30:THR:HG23	1:A:31:ALA:H	1.42	0.82
1:A:78:LEU:HD22	1:A:113:ILE:HG23	1.62	0.80
2:B:93:LYS:HE3	3:C:107:VAL:HA	1.64	0.80
3:C:22:LEU:HB3	3:C:116:ILE:HG22	1.64	0.79
4:D:1:NAG:H61	4:D:2:NAG:HN2	1.50	0.77
1:A:410:ASN:HD21	1:A:414:GLN:HE21	1.33	0.77
2:B:68:ILE:HG23	2:B:70:LEU:H	1.51	0.76
1:A:111:LEU:HD13	9:A:507:GM6:HBB	1.51	0.75
2:B:34:PRO:HB2	2:B:129:VAL:HG11	1.69	0.74
3:C:112:THR:HG22	3:C:114:ASN:H	1.51	0.74
1:A:232:PRO:HA	1:A:242:ALA:HB1	1.70	0.74
1:A:275:ARG:HH11	1:A:275:ARG:HB3	1.53	0.74
1:A:236:GLN:O	1:A:238:PRO:HD3	1.89	0.72
1:A:351:ARG:NH2	1:A:412:LYS:HG2	2.04	0.72
1:A:48:ASN:HB3	1:A:49:PRO:HD3	1.71	0.72
2:B:93:LYS:CE	3:C:107:VAL:HA	2.20	0.71
2:B:118:ASN:HD21	2:B:120:GLU:HB3	1.54	0.71
1:A:379:ASN:O	1:A:380:LYS:HG3	1.92	0.69
1:A:218:ASN:O	1:A:220:ILE:HG13	1.93	0.69
3:C:55:ASN:O	3:C:59:GLU:HG2	1.93	0.69
1:A:206:LEU:HD11	1:A:293:ARG:HA	1.75	0.68
1:A:307:ARG:HE	1:A:307:ARG:HA	1.58	0.68
5:E:2:NAG:H83	5:E:4:MAN:H3	1.76	0.68
1:A:299:ASN:HD21	1:A:312:ASN:H	1.43	0.68
2:B:118:ASN:HB3	2:B:121:GLU:HG3	1.75	0.68
1:A:162:CYS:SG	1:A:182:SER:HA	2.34	0.67

Continued on next page...

Continued from previous page...

Atom-1	Atom-2	Interatomic distance (Å)	Clash overlap (Å)
1:A:248:LYS:HB3	1:A:249:PRO:CD	2.16	0.67
2:B:2:CYS:C	2:B:4:PRO:HD2	2.16	0.66
1:A:271:CYS:HB3	1:A:284:CYS:SG	2.35	0.66
4:D:1:NAG:H61	4:D:2:NAG:N2	2.10	0.66
1:A:309:TYR:HE1	1:A:402:LYS:HG3	1.58	0.66
1:A:30:THR:HG23	1:A:31:ALA:N	2.09	0.66
2:B:4:PRO:O	2:B:5:ASP:HB2	1.96	0.66
1:A:207:ARG:HG2	1:A:221:TRP:O	1.96	0.66
2:B:40:VAL:CG2	2:B:126:VAL:HG13	2.26	0.65
1:A:410:ASN:HD21	1:A:414:GLN:NE2	1.95	0.65
2:B:40:VAL:HG21	2:B:126:VAL:HG13	1.79	0.64
2:B:53:LYS:HE2	2:B:53:LYS:HA	1.79	0.64
1:A:153:MET:CE	1:A:185:SER:HB3	2.28	0.63
3:C:67:TRP:CE3	3:C:100:ILE:HG12	2.34	0.63
2:B:93:LYS:HB2	2:B:93:LYS:HZ2	1.62	0.62
1:A:11:ILE:HG23	1:A:201:ILE:HB	1.81	0.62
1:A:261:GLN:O	1:A:262:CYS:HB2	1.98	0.62
5:E:2:NAG:C8	5:E:4:MAN:H3	2.29	0.62
1:A:307:ARG:HA	1:A:307:ARG:NE	2.15	0.61
1:A:321:GLN:HE22	1:A:398:ASP:H	1.48	0.61
2:B:2:CYS:O	2:B:4:PRO:HD2	2.01	0.61
1:A:222:GLU:HB2	1:A:225:GLU:OE2	2.01	0.61
2:B:18:LYS:O	2:B:18:LYS:HG2	2.01	0.61
2:B:35:ASN:C	2:B:37:GLY:H	2.03	0.61
2:B:93:LYS:HB2	2:B:93:LYS:HZ3	1.66	0.61
1:A:261:GLN:HA	1:A:261:GLN:HE21	1.66	0.60
3:C:65:ALA:O	3:C:118:PRO:HG2	2.00	0.60
1:A:83:GLU:HG3	1:A:123:TYR:HE2	1.65	0.60
3:C:22:LEU:HB3	3:C:116:ILE:CG2	2.31	0.60
2:B:14:TYR:N	2:B:14:TYR:CD2	2.70	0.60
3:C:70:LEU:HD12	3:C:99:LEU:HD22	1.84	0.59
2:B:118:ASN:ND2	2:B:120:GLU:HB3	2.16	0.59
1:A:382:PRO:HD2	2:B:10:ARG:HH22	1.64	0.59
2:B:117:ARG:HD2	2:B:123:TYR:OH	2.03	0.59
2:B:2:CYS:C	2:B:4:PRO:CD	2.71	0.59
3:C:102:ILE:HD12	3:C:104:HIS:CE1	2.37	0.58
1:A:297:GLN:NE2	1:A:298:GLN:H	2.01	0.58
1:A:377:PRO:O	1:A:378:ARG:HB2	2.03	0.58
2:B:40:VAL:HG22	2:B:126:VAL:O	2.04	0.58
1:A:111:LEU:HD13	9:A:507:GM6:NBB	2.18	0.58
1:A:272:ARG:HD2	1:A:282:GLU:OE1	2.04	0.58

Continued on next page...

Continued from previous page...

Atom-1	Atom-2	Interatomic distance (Å)	Clash overlap (Å)
1:A:297:GLN:HE21	1:A:298:GLN:H	1.50	0.58
1:A:39:ILE:HD13	1:A:139:THR:HG21	1.85	0.58
1:A:119:MET:HE3	1:A:125:SER:OG	2.04	0.57
2:B:93:LYS:HD3	3:C:50:GLU:OE2	2.04	0.57
1:A:153:MET:HE2	1:A:185:SER:HB3	1.85	0.57
1:A:39:ILE:HD11	1:A:131:GLU:OE2	2.05	0.57
1:A:248:LYS:CB	1:A:249:PRO:HD2	2.17	0.57
1:A:271:CYS:SG	1:A:292:PRO:HD2	2.45	0.57
2:B:10:ARG:O	2:B:11:TYR:HB2	2.04	0.57
3:C:66:THR:HG21	3:C:120:VAL:HG23	1.87	0.57
2:B:18:LYS:HA	2:B:124:LEU:HD22	1.85	0.57
2:B:9:TYR:CZ	2:B:10:ARG:HD3	2.40	0.56
1:A:29:SER:O	1:A:31:ALA:N	2.39	0.56
3:C:46:SER:OG	3:C:48:GLU:HG2	2.05	0.56
2:B:65:HIS:HB2	2:B:123:TYR:CD2	2.41	0.56
1:A:239:CYS:HA	1:A:248:LYS:HG3	1.87	0.56
1:A:253:CYS:SG	1:A:264:ILE:HD13	2.46	0.56
1:A:301:LYS:HD2	1:A:302:PRO:HD2	1.89	0.55
1:A:35:LYS:O	1:A:39:ILE:HG13	2.07	0.55
1:A:71:THR:HG21	1:A:76:GLU:OE2	2.06	0.55
1:A:334:LYS:HD2	1:A:335:ASP:N	2.22	0.55
2:B:64:THR:HG22	2:B:65:HIS:N	2.16	0.55
1:A:207:ARG:HD3	1:A:221:TRP:CD2	2.41	0.55
1:A:342:LEU:HD23	1:A:360:CYS:O	2.05	0.55
1:A:41:ASN:O	1:A:45:GLU:HG3	2.06	0.55
2:B:45:MET:HG3	2:B:112:ARG:HH22	1.72	0.55
1:A:111:LEU:HD22	9:A:507:GM6:OAZ	2.07	0.55
3:C:117:ALA:HB1	3:C:118:PRO:HD2	1.88	0.54
1:A:26:LYS:O	1:A:28:ASN:N	2.40	0.54
2:B:40:VAL:HG13	2:B:126:VAL:HG22	1.89	0.54
1:A:14:GLU:HG3	1:A:96:ASP:OD2	2.08	0.54
3:C:19:PHE:HB2	3:C:119:VAL:HG13	1.90	0.54
3:C:43:SER:O	3:C:44:LEU:HD23	2.07	0.54
3:C:66:THR:HG21	3:C:120:VAL:CG2	2.38	0.54
1:A:319:ARG:NH1	1:A:331:ASN:ND2	2.55	0.54
2:B:1:ASP:HA	2:B:8:LEU:HD22	1.89	0.54
3:C:15:CYS:O	3:C:122:LYS:HA	2.08	0.54
3:C:11:TYR:CE2	3:C:49:GLU:HA	2.43	0.53
1:A:334:LYS:NZ	1:A:336:SER:H	2.06	0.53
3:C:102:ILE:HD12	3:C:104:HIS:HE1	1.72	0.53
2:B:35:ASN:O	2:B:37:GLY:N	2.41	0.53

Continued on next page...

Continued from previous page...

Atom-1	Atom-2	Interatomic distance (Å)	Clash overlap (Å)
1:A:62:TRP:NE1	1:A:67:LEU:HD12	2.23	0.53
1:A:97:ASN:HB2	1:A:119:MET:HE1	1.91	0.53
2:B:42:ILE:HD12	2:B:68:ILE:HD11	1.90	0.52
2:B:99:PHE:C	2:B:100:ARG:HD2	2.30	0.52
1:A:11:ILE:CG2	1:A:201:ILE:HD12	2.40	0.52
1:A:416:VAL:HG23	1:A:421:ALA:HB2	1.92	0.52
1:A:418:VAL:HG13	1:A:419:ASN:N	2.24	0.52
2:B:41:SER:HA	3:C:81:TRP:CE3	2.44	0.52
3:C:41:LEU:HB3	3:C:68:ILE:O	2.10	0.52
2:B:67:TRP:CE3	2:B:104:VAL:HG12	2.45	0.52
1:A:187:HIS:O	1:A:191:ARG:HG3	2.10	0.51
1:A:403:CYS:O	1:A:404:GLU:HG3	2.11	0.51
1:A:148:SER:HB3	1:A:153:MET:SD	2.50	0.51
1:A:174:SER:O	1:A:177:PRO:HG3	2.09	0.51
1:A:309:TYR:CE1	1:A:402:LYS:HG3	2.41	0.51
1:A:240:CYS:N	1:A:248:LYS:HG3	2.25	0.51
1:A:416:VAL:CG2	1:A:421:ALA:HB2	2.40	0.51
3:C:81:TRP:NE1	3:C:87:VAL:HG22	2.25	0.51
1:A:42:SER:O	1:A:46:ILE:HG13	2.11	0.51
2:B:33:HIS:N	2:B:34:PRO:HD2	2.25	0.51
2:B:67:TRP:CZ3	2:B:102:CYS:HB3	2.45	0.51
1:A:83:GLU:HG3	1:A:123:TYR:CE2	2.45	0.51
1:A:261:GLN:HA	1:A:261:GLN:NE2	2.26	0.51
2:B:31:MET:HB3	2:B:37:GLY:O	2.09	0.51
1:A:412:LYS:HB2	1:A:412:LYS:NZ	2.25	0.51
2:B:34:PRO:O	2:B:35:ASN:O	2.29	0.51
1:A:356:ARG:HB2	1:A:356:ARG:CZ	2.41	0.51
1:A:413:ARG:N	1:A:413:ARG:HD2	2.25	0.50
3:C:80:GLU:HA	3:C:87:VAL:HG23	1.93	0.50
1:A:161:ILE:HG22	1:A:162:CYS:N	2.27	0.50
3:C:24:ASN:HB2	3:C:113:CYS:O	2.11	0.50
2:B:67:TRP:HB2	2:B:125:PHE:HB3	1.92	0.50
3:C:70:LEU:HD12	3:C:99:LEU:CD2	2.41	0.50
1:A:12:PHE:CD2	1:A:204:PRO:HB3	2.47	0.50
1:A:11:ILE:HG21	1:A:201:ILE:HD12	1.94	0.49
1:A:21:HIS:HA	1:A:24:ALA:HB3	1.93	0.49
1:A:86:ALA:HA	1:A:90:MET:HE2	1.93	0.49
3:C:65:ALA:O	3:C:118:PRO:CG	2.60	0.49
1:A:351:ARG:HE	1:A:412:LYS:HB3	1.77	0.49
1:A:97:ASN:HB2	1:A:119:MET:CE	2.42	0.49
3:C:120:VAL:HG12	3:C:120:VAL:O	2.11	0.49

Continued on next page...

Continued from previous page...

Atom-1	Atom-2	Interatomic distance (Å)	Clash overlap (Å)
1:A:30:THR:CG2	1:A:31:ALA:H	2.21	0.48
1:A:238:PRO:O	1:A:248:LYS:HE2	2.13	0.48
1:A:257:LEU:HB2	1:A:291:CYS:HB2	1.94	0.48
1:A:300:GLY:O	1:A:309:TYR:HD2	1.96	0.48
3:C:102:ILE:HD11	3:C:107:VAL:HG22	1.94	0.48
1:A:56:LEU:O	1:A:211:VAL:HG22	2.14	0.48
1:A:141:VAL:HG21	1:A:177:PRO:HB2	1.94	0.48
1:A:19:VAL:HG13	1:A:23:MET:HB2	1.95	0.48
1:A:331:ASN:OD1	1:A:332:VAL:N	2.47	0.48
3:C:16:TYR:CD1	3:C:16:TYR:N	2.82	0.48
1:A:33:ASN:HB3	1:A:37:TYR:CZ	2.49	0.48
1:A:113:ILE:HG22	1:A:128:ILE:HB	1.96	0.48
3:C:102:ILE:O	3:C:106:LYS:HA	2.14	0.48
1:A:182:SER:O	1:A:186:ILE:HG12	2.14	0.47
2:B:94:LEU:HD23	2:B:99:PHE:CE2	2.49	0.47
3:C:9:LEU:N	3:C:9:LEU:HD12	2.29	0.47
1:A:260:TYR:CD1	1:A:261:GLN:HG2	2.49	0.47
3:C:29:GLU:OE2	3:C:41:LEU:HG	2.13	0.47
3:C:39:SER:HA	3:C:122:LYS:O	2.15	0.47
3:C:104:HIS:ND1	3:C:105:GLU:HG2	2.29	0.47
1:A:232:PRO:HA	1:A:242:ALA:CB	2.42	0.47
1:A:239:CYS:HB2	1:A:251:ALA:CB	2.44	0.47
2:B:48:ALA:O	2:B:51:VAL:HG22	2.15	0.47
3:C:84:ARG:HG3	3:C:84:ARG:HH11	1.80	0.47
1:A:239:CYS:CA	1:A:248:LYS:HG3	2.45	0.47
1:A:62:TRP:CE2	1:A:67:LEU:HD12	2.49	0.47
1:A:160:CYS:O	1:A:161:ILE:HD13	2.15	0.47
1:A:329:ARG:O	1:A:329:ARG:HG3	2.14	0.47
3:C:56:LEU:HD23	3:C:56:LEU:O	2.15	0.47
1:A:22:SER:HB3	1:A:103:ASP:HB2	1.96	0.46
1:A:264:ILE:CD1	1:A:289:ALA:HB2	2.46	0.46
1:A:282:GLU:HB3	1:A:292:PRO:HG2	1.97	0.46
3:C:32:CYS:O	3:C:39:SER:HB3	2.15	0.46
3:C:42:VAL:O	3:C:68:ILE:O	2.33	0.46
2:B:93:LYS:O	2:B:93:LYS:HG3	2.15	0.46
1:A:239:CYS:C	1:A:248:LYS:HG3	2.36	0.46
2:B:120:GLU:HA	2:B:120:GLU:OE1	2.15	0.46
1:A:334:LYS:HZ2	1:A:336:SER:H	1.61	0.46
1:A:317:ILE:HB	1:A:320:ASN:ND2	2.30	0.46
2:B:100:ARG:HD2	2:B:100:ARG:N	2.30	0.46
1:A:175:ASP:C	1:A:177:PRO:HD3	2.36	0.45

Continued on next page...

Continued from previous page...

Atom-1	Atom-2	Interatomic distance (Å)	Clash overlap (Å)
2:B:35:ASN:C	2:B:37:GLY:N	2.69	0.45
2:B:93:LYS:HE2	3:C:107:VAL:HA	1.98	0.45
1:A:304:GLN:HG3	1:A:317:ILE:HD11	1.98	0.45
1:A:334:LYS:CE	1:A:336:SER:H	2.29	0.45
2:B:14:TYR:OH	2:B:128:LYS:HE3	2.16	0.45
2:B:93:LYS:HG2	3:C:108:TRP:CE2	2.52	0.45
2:B:14:TYR:N	2:B:14:TYR:HD2	2.14	0.45
3:C:11:TYR:CE2	3:C:12:GLU:HG2	2.52	0.45
3:C:30:LYS:O	3:C:34:GLU:HG3	2.17	0.45
1:A:377:PRO:O	1:A:378:ARG:CB	2.63	0.45
2:B:94:LEU:HD23	2:B:99:PHE:HE2	1.82	0.44
2:B:72:ILE:HD12	2:B:101:LYS:HB3	1.98	0.44
1:A:108:LEU:O	1:A:109:ASN:HB2	2.16	0.44
1:A:304:GLN:O	1:A:307:ARG:HG2	2.18	0.44
1:A:319:ARG:HG3	1:A:319:ARG:HH11	1.81	0.44
1:A:30:THR:CG2	1:A:31:ALA:N	2.80	0.44
1:A:62:TRP:HB3	1:A:65:ARG:O	2.17	0.44
1:A:340:GLU:HG2	1:A:347:TYR:CE1	2.53	0.44
2:B:34:PRO:HB2	2:B:129:VAL:CG1	2.44	0.44
1:A:258:CYS:SG	1:A:271:CYS:HB3	2.58	0.44
2:B:40:VAL:HG22	2:B:126:VAL:HG13	1.98	0.44
2:B:70:LEU:HD21	3:C:79:MET:SD	2.57	0.44
3:C:49:GLU:O	3:C:53:VAL:HG23	2.17	0.44
3:C:56:LEU:HD23	3:C:56:LEU:C	2.38	0.44
1:A:232:PRO:CA	1:A:242:ALA:HB1	2.45	0.44
1:A:89:LEU:HG	1:A:95:HIS:CE1	2.53	0.43
2:B:78:GLU:H	2:B:78:GLU:CD	2.20	0.43
4:D:1:NAG:C6	4:D:2:NAG:N2	2.80	0.43
1:A:78:LEU:HD11	1:A:126:VAL:HG23	2.00	0.43
3:C:105:GLU:OE2	3:C:105:GLU:HA	2.18	0.43
1:A:111:LEU:CD1	9:A:507:GM6:HBB	2.25	0.43
1:A:119:MET:O	1:A:120:CYS:HB2	2.18	0.43
1:A:275:ARG:HH11	1:A:275:ARG:CB	2.27	0.43
1:A:353:GLU:O	1:A:354:ASN:HB3	2.17	0.43
2:B:73:LYS:O	2:B:74:ASP:CG	2.57	0.43
1:A:244:THR:O	1:A:246:LYS:HG2	2.17	0.43
1:A:403:CYS:C	1:A:404:GLU:HG3	2.38	0.43
2:B:57:ASN:OD1	6:B:201:NAG:H2	2.18	0.43
2:B:85:ASP:HA	3:C:40:HIS:CD2	2.53	0.43
3:C:24:ASN:HA	3:C:115:PHE:O	2.19	0.43
1:A:105:ARG:NH1	1:A:109:ASN:OD1	2.52	0.43

Continued on next page...

Continued from previous page...

Atom-1	Atom-2	Interatomic distance (Å)	Clash overlap (Å)
1:A:319:ARG:HH11	1:A:331:ASN:ND2	2.15	0.43
3:C:12:GLU:OE2	3:C:12:GLU:HA	2.19	0.43
1:A:401:THR:HG22	1:A:402:LYS:N	2.34	0.43
2:B:3:PRO:N	2:B:4:PRO:CD	2.82	0.42
1:A:40:VAL:HA	1:A:143:MET:HE1	2.01	0.42
2:B:77:GLN:HG3	2:B:99:PHE:CE2	2.55	0.42
1:A:14:GLU:HB3	1:A:57:ILE:HD13	2.00	0.42
1:A:23:MET:HG2	1:A:103:ASP:OD2	2.20	0.42
1:A:303:CYS:O	1:A:304:GLN:HB2	2.19	0.42
1:A:9:ASN:HD22	1:A:9:ASN:HA	1.64	0.42
1:A:218:ASN:ND2	1:A:220:ILE:HB	2.34	0.42
1:A:323:ILE:HA	1:A:327:GLY:O	2.19	0.42
2:B:33:HIS:N	2:B:34:PRO:CD	2.83	0.42
1:A:19:VAL:CG1	1:A:23:MET:HB2	2.50	0.42
1:A:367:CYS:SG	1:A:415:CYS:HB2	2.59	0.42
3:C:65:ALA:O	3:C:66:THR:CG2	2.68	0.42
3:C:65:ALA:HA	3:C:101:MET:O	2.20	0.42
3:C:102:ILE:HD11	3:C:107:VAL:CG2	2.49	0.42
1:A:198:PRO:HG2	1:A:201:ILE:HD11	2.02	0.41
1:A:410:ASN:HD21	1:A:414:GLN:HB2	1.84	0.41
1:A:334:LYS:O	1:A:335:ASP:C	2.59	0.41
2:B:55:LEU:O	2:B:58:THR:HB	2.20	0.41
2:B:68:ILE:HG21	2:B:103:PHE:HB2	2.02	0.41
2:B:93:LYS:HE2	3:C:106:LYS:O	2.20	0.41
1:A:131:GLU:OE1	1:A:132:GLN:N	2.54	0.41
3:C:95:GLU:HG2	3:C:96:SER:N	2.35	0.41
1:A:153:MET:HE3	1:A:185:SER:HB3	2.00	0.41
2:B:91:TYR:HB2	3:C:45:HIS:C	2.41	0.41
1:A:260:TYR:HB2	1:A:265:LYS:NZ	2.36	0.41
1:A:20:ASP:HB3	1:A:100:LEU:HD11	2.03	0.41
2:B:103:PHE:HA	2:B:115:PHE:O	2.20	0.41
1:A:275:ARG:HG2	1:A:279:ASP:OD1	2.21	0.41
3:C:23:LYS:HD2	3:C:28:ALA:HA	2.02	0.41
1:A:381:ASN:ND2	1:A:383:CYS:C	2.75	0.40
2:B:94:LEU:HA	3:C:108:TRP:HB2	2.02	0.40
3:C:19:PHE:N	3:C:61:LEU:HD21	2.36	0.40
3:C:71:GLY:HA2	3:C:98:CYS:SG	2.61	0.40
3:C:84:ARG:HG3	3:C:84:ARG:NH1	2.36	0.40
3:C:104:HIS:CG	3:C:105:GLU:H	2.36	0.40

There are no symmetry-related clashes.

5.3 Torsion angles [i](#)

5.3.1 Protein backbone [i](#)

In the following table, the Percentiles column shows the percent Ramachandran outliers of the chain as a percentile score with respect to all X-ray entries followed by that with respect to entries of similar resolution.

The Analysed column shows the number of residues for which the backbone conformation was analysed, and the total number of residues.

Mol	Chain	Analysed	Favoured	Allowed	Outliers	Percentiles	
1	A	414/427 (97%)	358 (86%)	48 (12%)	8 (2%)	8	27
2	B	125/134 (93%)	106 (85%)	12 (10%)	7 (6%)	2	5
3	C	118/122 (97%)	94 (80%)	18 (15%)	6 (5%)	2	6
All	All	657/683 (96%)	558 (85%)	78 (12%)	21 (3%)	4	15

All (21) Ramachandran outliers are listed below:

Mol	Chain	Res	Type
1	A	27	CYS
1	A	29	SER
1	A	30	THR
2	B	5	ASP
2	B	35	ASN
3	C	104	HIS
1	A	249	PRO
1	A	380	LYS
2	B	74	ASP
3	C	21	ASP
1	A	377	PRO
2	B	36	ASN
2	B	37	GLY
3	C	69	GLY
1	A	345	SER
2	B	75	LYS
3	C	5	PRO
3	C	12	GLU
3	C	103	THR
1	A	122	ALA
2	B	3	PRO

5.3.2 Protein sidechains [i](#)

In the following table, the Percentiles column shows the percent sidechain outliers of the chain as a percentile score with respect to all X-ray entries followed by that with respect to entries of similar resolution.

The Analysed column shows the number of residues for which the sidechain conformation was analysed, and the total number of residues.

Mol	Chain	Analysed	Rotameric	Outliers	Percentiles	
1	A	368/377 (98%)	358 (97%)	10 (3%)	44	75
2	B	120/124 (97%)	113 (94%)	7 (6%)	20	48
3	C	109/111 (98%)	109 (100%)	0	100	100
All	All	597/612 (98%)	580 (97%)	17 (3%)	43	75

All (17) residues with a non-rotameric sidechain are listed below:

Mol	Chain	Res	Type
1	A	54	VAL
1	A	66	ASP
1	A	167	CYS
1	A	200	CYS
1	A	275	ARG
1	A	334	LYS
1	A	345	SER
1	A	385	MET
1	A	412	LYS
1	A	413	ARG
2	B	14	TYR
2	B	40	VAL
2	B	53	LYS
2	B	77	GLN
2	B	93	LYS
2	B	100	ARG
2	B	126	VAL

Sometimes sidechains can be flipped to improve hydrogen bonding and reduce clashes. All (18) such sidechains are listed below:

Mol	Chain	Res	Type
1	A	9	ASN
1	A	28	ASN
1	A	79	ASN
1	A	163	ASN

Continued on next page...

Continued from previous page...

Mol	Chain	Res	Type
1	A	176	GLN
1	A	261	GLN
1	A	297	GLN
1	A	299	ASN
1	A	312	ASN
1	A	320	ASN
1	A	321	GLN
1	A	341	ASN
1	A	374	ASN
1	A	384	ASN
1	A	392	GLN
1	A	414	GLN
2	B	118	ASN
3	C	40	HIS

5.3.3 RNA [i](#)

There are no RNA molecules in this entry.

5.4 Non-standard residues in protein, DNA, RNA chains [i](#)

There are no non-standard protein/DNA/RNA residues in this entry.

5.5 Carbohydrates [i](#)

6 monosaccharides are modelled in this entry.

In the following table, the Counts columns list the number of bonds (or angles) for which Mogul statistics could be retrieved, the number of bonds (or angles) that are observed in the model and the number of bonds (or angles) that are defined in the Chemical Component Dictionary. The Link column lists molecule types, if any, to which the group is linked. The Z score for a bond length (or angle) is the number of standard deviations the observed value is removed from the expected value. A bond length (or angle) with $|Z| > 2$ is considered an outlier worth inspection. RMSZ is the root-mean-square of all Z scores of the bond lengths (or angles).

Mol	Type	Chain	Res	Link	Bond lengths			Bond angles		
					Counts	RMSZ	$\# Z > 2$	Counts	RMSZ	$\# Z > 2$
4	NAG	D	1	1,4	14,14,15	0.51	0	17,19,21	0.75	1 (5%)
4	NAG	D	2	4	14,14,15	0.59	0	17,19,21	0.61	0
5	NAG	E	1	5,3	14,14,15	0.65	0	17,19,21	0.70	0
5	NAG	E	2	5	14,14,15	0.62	0	17,19,21	0.68	0

Mol	Type	Chain	Res	Link	Bond lengths			Bond angles		
					Counts	RMSZ	# Z > 2	Counts	RMSZ	# Z > 2
5	MAN	E	3	5	11,11,12	0.63	0	15,15,17	0.39	0
5	MAN	E	4	5	11,11,12	0.56	0	15,15,17	0.58	0

In the following table, the Chirals column lists the number of chiral outliers, the number of chiral centers analysed, the number of these observed in the model and the number defined in the Chemical Component Dictionary. Similar counts are reported in the Torsion and Rings columns. '-' means no outliers of that kind were identified.

Mol	Type	Chain	Res	Link	Chirals	Torsions	Rings
4	NAG	D	1	1,4	-	4/6/23/26	0/1/1/1
4	NAG	D	2	4	-	3/6/23/26	0/1/1/1
5	NAG	E	1	5,3	-	4/6/23/26	0/1/1/1
5	NAG	E	2	5	-	2/6/23/26	0/1/1/1
5	MAN	E	3	5	1/1/4/5	0/2/19/22	0/1/1/1
5	MAN	E	4	5	1/1/4/5	2/2/19/22	0/1/1/1

There are no bond length outliers.

All (1) bond angle outliers are listed below:

Mol	Chain	Res	Type	Atoms	Z	Observed(°)	Ideal(°)
4	D	1	NAG	C2-N2-C7	-2.03	120.02	122.90

All (2) chirality outliers are listed below:

Mol	Chain	Res	Type	Atom
5	E	3	MAN	C1
5	E	4	MAN	C1

All (15) torsion outliers are listed below:

Mol	Chain	Res	Type	Atoms
4	D	1	NAG	C8-C7-N2-C2
4	D	1	NAG	O7-C7-N2-C2
4	D	2	NAG	C8-C7-N2-C2
4	D	2	NAG	O7-C7-N2-C2
5	E	1	NAG	C8-C7-N2-C2
5	E	1	NAG	O7-C7-N2-C2
5	E	2	NAG	C8-C7-N2-C2
5	E	2	NAG	O7-C7-N2-C2
4	D	1	NAG	O5-C5-C6-O6

Continued on next page...

Continued from previous page...

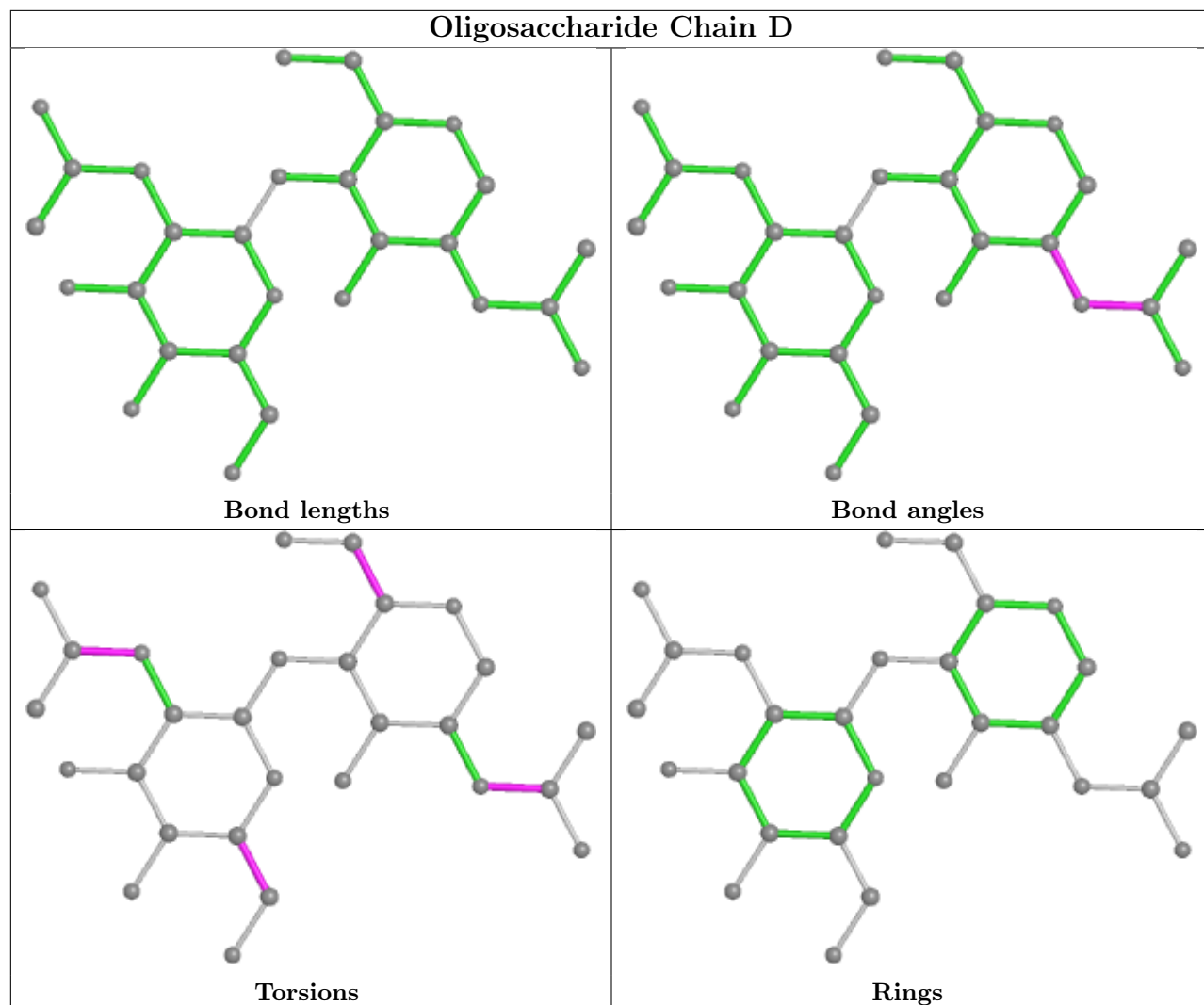
Mol	Chain	Res	Type	Atoms
5	E	1	NAG	O5-C5-C6-O6
4	D	1	NAG	C4-C5-C6-O6
5	E	1	NAG	C4-C5-C6-O6
5	E	4	MAN	O5-C5-C6-O6
4	D	2	NAG	O5-C5-C6-O6
5	E	4	MAN	C4-C5-C6-O6

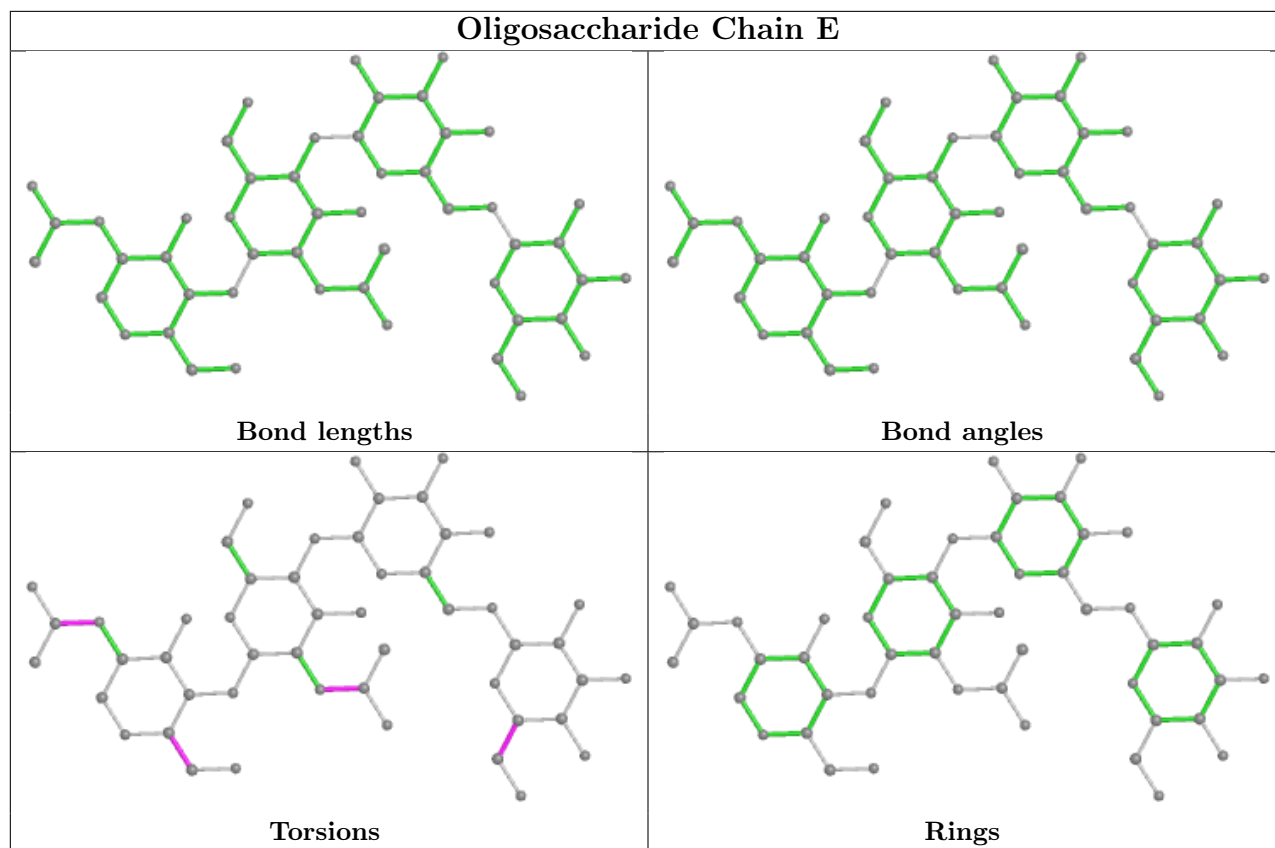
There are no ring outliers.

4 monomers are involved in 5 short contacts:

Mol	Chain	Res	Type	Clashes	Symm-Clashes
4	D	2	NAG	3	0
5	E	2	NAG	2	0
4	D	1	NAG	3	0
5	E	4	MAN	2	0

The following is a two-dimensional graphical depiction of Mogul quality analysis of bond lengths, bond angles, torsion angles, and ring geometry for oligosaccharide.





5.6 Ligand geometry [i](#)

Of 9 ligands modelled in this entry, 6 are monoatomic - leaving 3 for Mogul analysis.

In the following table, the Counts columns list the number of bonds (or angles) for which Mogul statistics could be retrieved, the number of bonds (or angles) that are observed in the model and the number of bonds (or angles) that are defined in the Chemical Component Dictionary. The Link column lists molecule types, if any, to which the group is linked. The Z score for a bond length (or angle) is the number of standard deviations the observed value is removed from the expected value. A bond length (or angle) with $|Z| > 2$ is considered an outlier worth inspection. RMSZ is the root-mean-square of all Z scores of the bond lengths (or angles).

Mol	Type	Chain	Res	Link	Bond lengths			Bond angles		
					Counts	RMSZ	$\# Z > 2$	Counts	RMSZ	$\# Z > 2$
9	GM6	A	507	7	28,29,29	1.17	2 (7%)	34,39,39	1.25	3 (8%)
6	NAG	B	201	2	14,14,15	0.51	0	17,19,21	0.65	1 (5%)
6	NAG	A	501	1	14,14,15	0.49	0	17,19,21	0.71	0

In the following table, the Chirals column lists the number of chiral outliers, the number of chiral centers analysed, the number of these observed in the model and the number defined in the Chemical Component Dictionary. Similar counts are reported in the Torsion and Rings columns. '-' means no outliers of that kind were identified.

Mol	Type	Chain	Res	Link	Chirals	Torsions	Rings
9	GM6	A	507	7	-	5/27/28/28	0/2/2/2
6	NAG	B	201	2	-	5/6/23/26	0/1/1/1
6	NAG	A	501	1	-	3/6/23/26	0/1/1/1

All (2) bond length outliers are listed below:

Mol	Chain	Res	Type	Atoms	Z	Observed(Å)	Ideal(Å)
9	A	507	GM6	CAX-CAV	2.56	1.42	1.36
9	A	507	GM6	CAW-CAS	2.10	1.41	1.36

All (4) bond angle outliers are listed below:

Mol	Chain	Res	Type	Atoms	Z	Observed(°)	Ideal(°)
9	A	507	GM6	CAP-CAO-CAN	3.20	119.71	113.45
9	A	507	GM6	CAO-CAN-CAY	-2.96	102.57	110.25
9	A	507	GM6	CBA-NBB-CAY	-2.34	118.17	122.22
6	B	201	NAG	C2-N2-C7	-2.01	120.04	122.90

There are no chirality outliers.

All (13) torsion outliers are listed below:

Mol	Chain	Res	Type	Atoms
6	B	201	NAG	O7-C7-N2-C2
9	A	507	GM6	CAN-CAY-NBB-CBA
9	A	507	GM6	OAZ-CAY-NBB-CBA
9	A	507	GM6	CAN-CAO-CAP-CAT
6	B	201	NAG	C8-C7-N2-C2
6	A	501	NAG	C8-C7-N2-C2
6	A	501	NAG	O7-C7-N2-C2
6	B	201	NAG	O5-C5-C6-O6
6	B	201	NAG	C4-C5-C6-O6
6	B	201	NAG	C1-C2-N2-C7
6	A	501	NAG	C1-C2-N2-C7
9	A	507	GM6	CAB-CAC-CAD-NAF
9	A	507	GM6	CAB-CAC-CAD-OAE

There are no ring outliers.

2 monomers are involved in 5 short contacts:

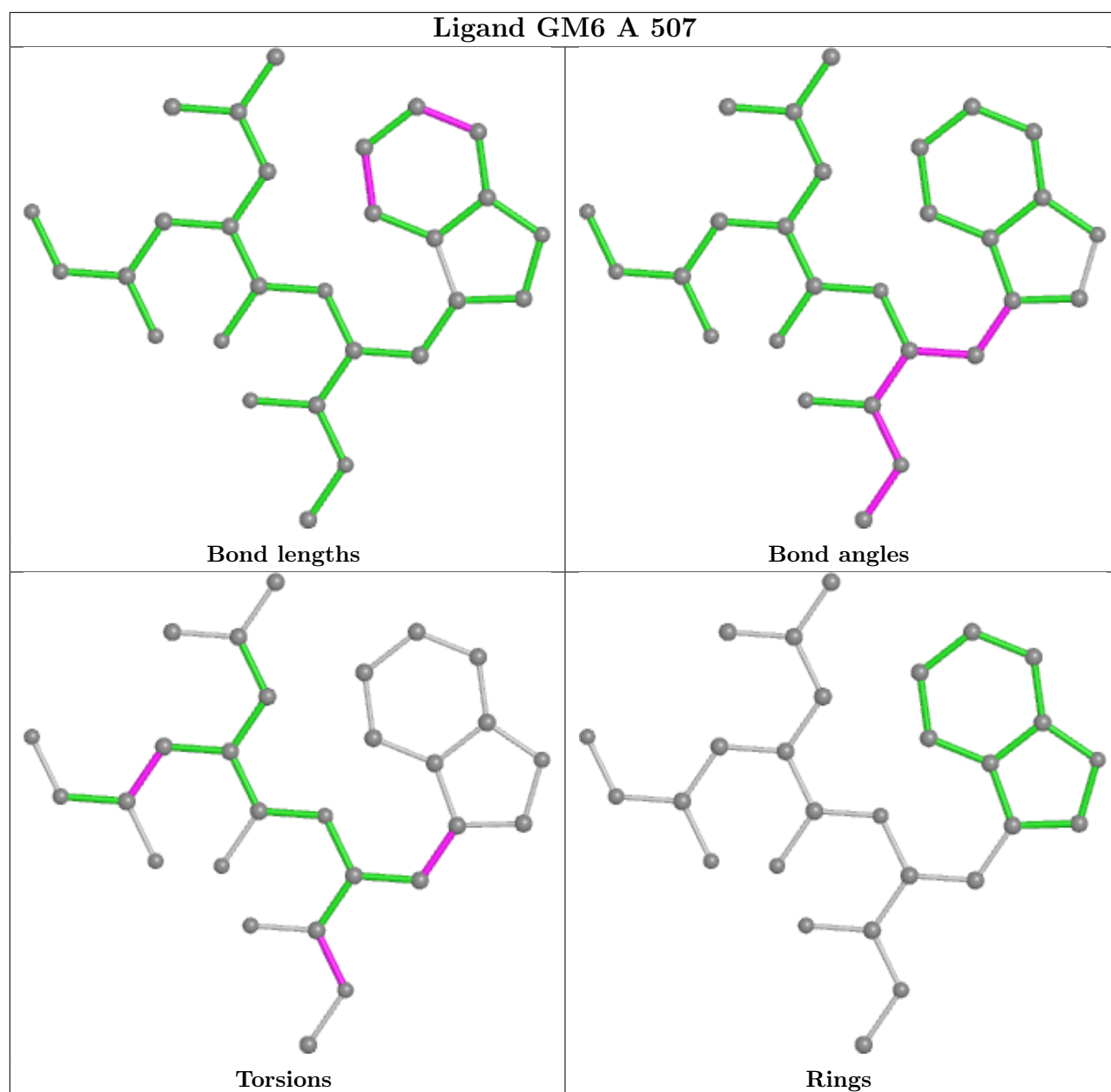
Mol	Chain	Res	Type	Clashes	Symm-Clashes
9	A	507	GM6	4	0

Continued on next page...

Continued from previous page...

Mol	Chain	Res	Type	Clashes	Symm-Clashes
6	B	201	NAG	1	0

The following is a two-dimensional graphical depiction of Mogul quality analysis of bond lengths, bond angles, torsion angles, and ring geometry for all instances of the Ligand of Interest. In addition, ligands with molecular weight > 250 and outliers as shown on the validation Tables will also be included. For torsion angles, if less than 5% of the Mogul distribution of torsion angles is within 10 degrees of the torsion angle in question, then that torsion angle is considered an outlier. Any bond that is central to one or more torsion angles identified as an outlier by Mogul will be highlighted in the graph. For rings, the root-mean-square deviation (RMSD) between the ring in question and similar rings identified by Mogul is calculated over all ring torsion angles. If the average RMSD is greater than 60 degrees and the minimal RMSD between the ring in question and any Mogul-identified rings is also greater than 60 degrees, then that ring is considered an outlier. The outliers are highlighted in purple. The color gray indicates Mogul did not find sufficient equivalents in the CSD to analyse the geometry.



5.7 Other polymers [i](#)

There are no such residues in this entry.

5.8 Polymer linkage issues [i](#)

There are no chain breaks in this entry.

6 Fit of model and data [i](#)

6.1 Protein, DNA and RNA chains [i](#)

In the following table, the column labelled ‘#RSRZ > 2’ contains the number (and percentage) of RSRZ outliers, followed by percent RSRZ outliers for the chain as percentile scores relative to all X-ray entries and entries of similar resolution. The OWAB column contains the minimum, median, 95th percentile and maximum values of the occupancy-weighted average B-factor per residue. The column labelled ‘Q < 0.9’ lists the number of (and percentage) of residues with an average occupancy less than 0.9.

Mol	Chain	Analysed	<RSRZ>	#RSRZ>2	OWAB(Å ²)	Q<0.9
1	A	416/427 (97%)	0.14	10 (2%) 59 57	35, 67, 107, 150	0
2	B	129/134 (96%)	0.09	4 (3%) 49 45	41, 68, 116, 130	0
3	C	120/122 (98%)	0.15	0 100 100	48, 75, 111, 132	0
All	All	665/683 (97%)	0.13	14 (2%) 63 62	35, 68, 111, 150	0

All (14) RSRZ outliers are listed below:

Mol	Chain	Res	Type	RSRZ
1	A	378	ARG	5.0
2	B	36	ASN	4.6
1	A	380	LYS	3.5
2	B	1	ASP	3.2
1	A	373	LEU	3.0
1	A	422	TYR	2.9
1	A	374	ASN	2.8
1	A	250	GLY	2.7
2	B	75	LYS	2.5
1	A	221	TRP	2.3
1	A	244	THR	2.1
2	B	28	ARG	2.0
1	A	28	ASN	2.0
1	A	25	LYS	2.0

6.2 Non-standard residues in protein, DNA, RNA chains [i](#)

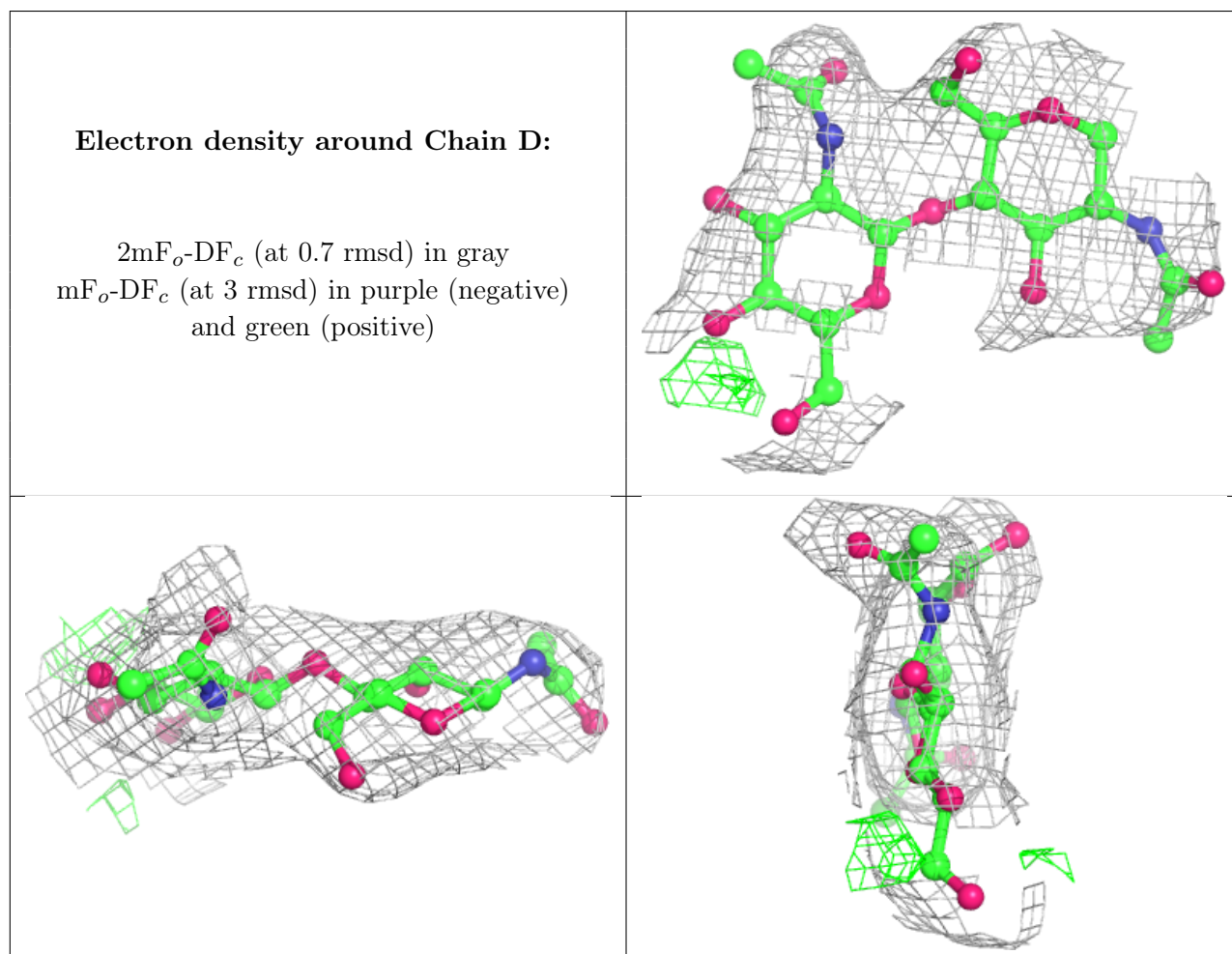
There are no non-standard protein/DNA/RNA residues in this entry.

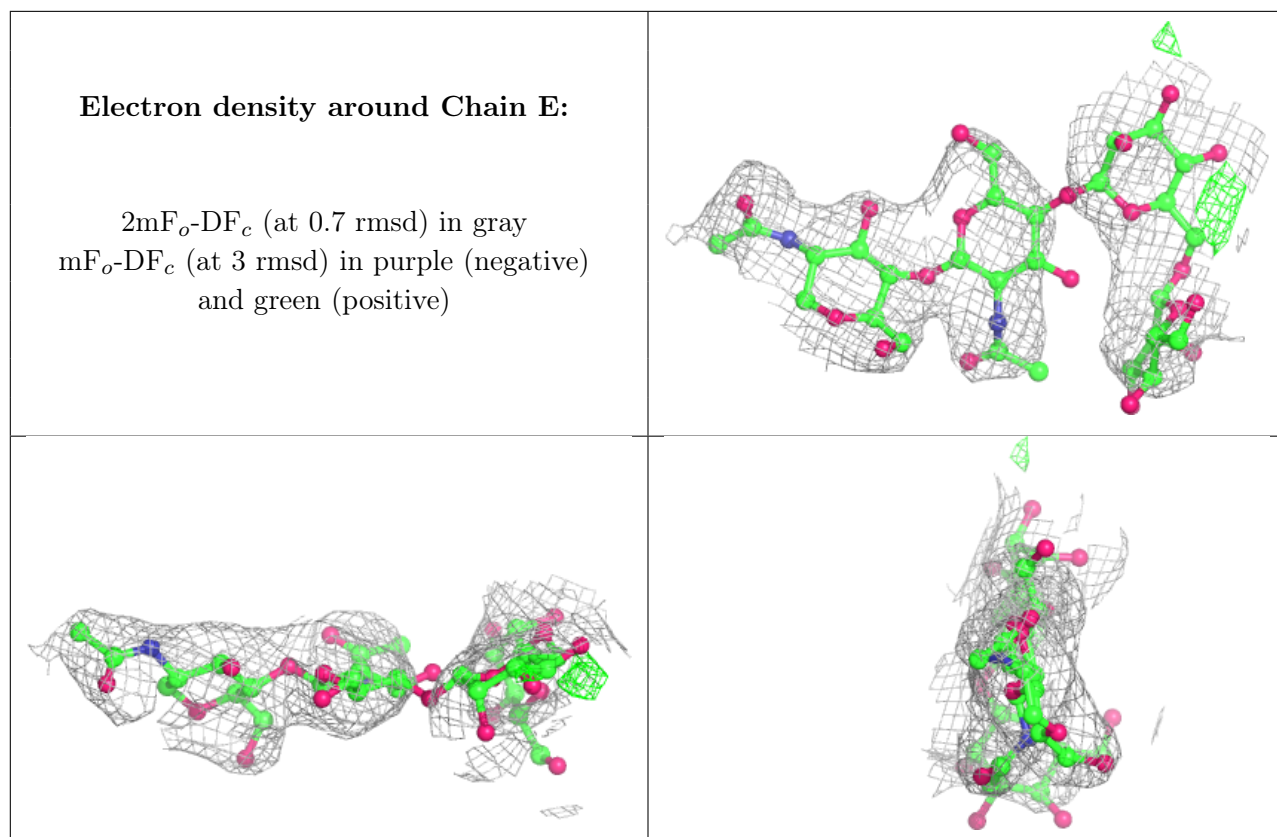
6.3 Carbohydrates [i](#)

In the following table, the Atoms column lists the number of modelled atoms in the group and the number defined in the chemical component dictionary. The B-factors column lists the minimum, median, 95th percentile and maximum values of B factors of atoms in the group. The column labelled 'Q < 0.9' lists the number of atoms with occupancy less than 0.9.

Mol	Type	Chain	Res	Atoms	RSCC	RSR	B-factors(Å ²)	Q<0.9
5	MAN	E	3	11/12	0.56	0.18	116,126,134,140	0
5	MAN	E	4	11/12	0.68	0.42	149,158,166,174	0
5	NAG	E	2	14/15	0.78	0.28	87,106,121,134	0
4	NAG	D	2	14/15	0.79	0.21	91,103,111,115	0
5	NAG	E	1	14/15	0.91	0.17	57,76,85,94	0
4	NAG	D	1	14/15	0.94	0.20	65,79,97,98	0

The following is a graphical depiction of the model fit to experimental electron density for oligosaccharide. Each fit is shown from different orientation to approximate a three-dimensional view.



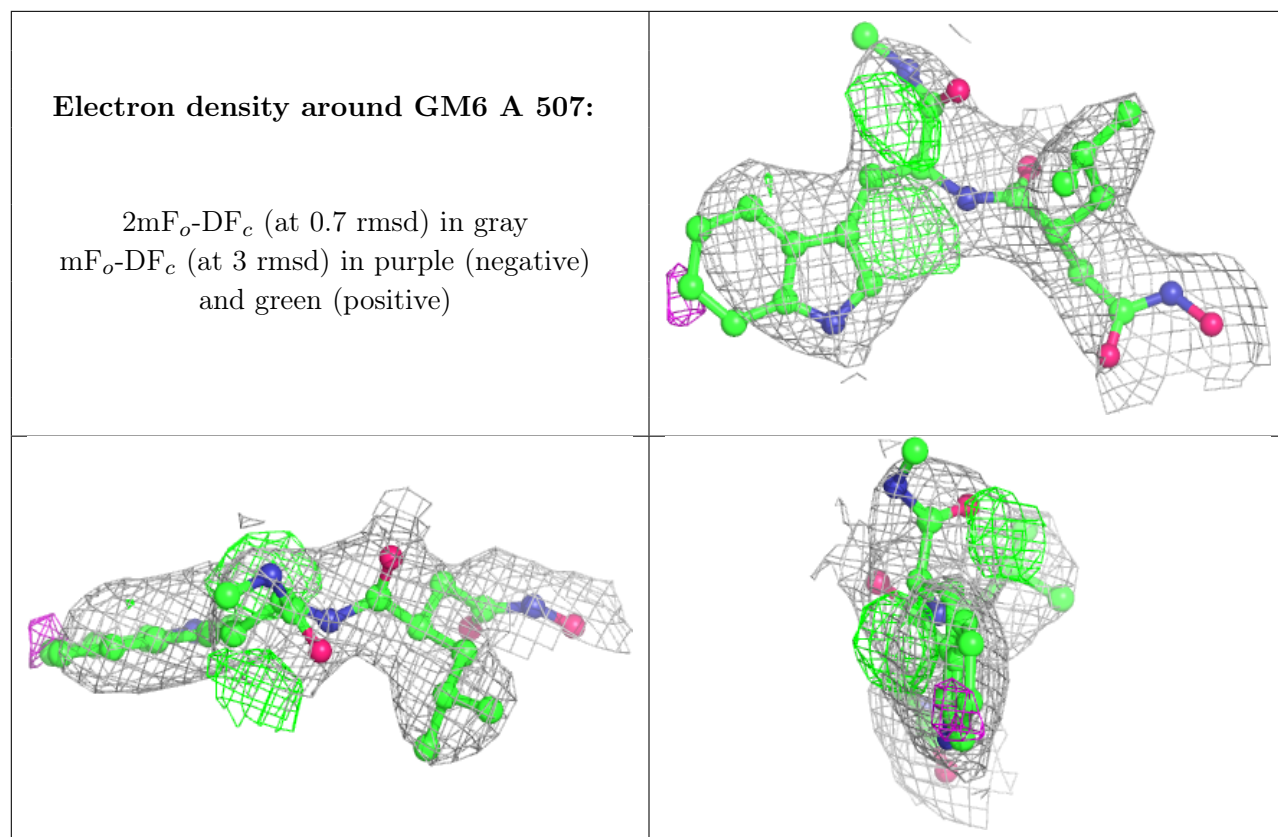


6.4 Ligands [i](#)

In the following table, the Atoms column lists the number of modelled atoms in the group and the number defined in the chemical component dictionary. The B-factors column lists the minimum, median, 95th percentile and maximum values of B factors of atoms in the group. The column labelled 'Q< 0.9' lists the number of atoms with occupancy less than 0.9.

Mol	Type	Chain	Res	Atoms	RSCC	RSR	B-factors(Å ²)	Q<0.9
6	NAG	B	201	14/15	0.86	0.34	126,138,145,147	0
6	NAG	A	501	14/15	0.88	0.29	99,105,112,122	0
8	CA	A	506	1/1	0.89	0.22	89,89,89,89	0
8	CA	B	202	1/1	0.92	0.24	86,86,86,86	0
9	GM6	A	507	28/28	0.94	0.30	37,70,95,100	0
8	CA	A	503	1/1	0.97	0.31	55,55,55,55	0
8	CA	A	505	1/1	0.98	0.18	56,56,56,56	0
7	ZN	A	502	1/1	0.99	0.21	56,56,56,56	0
8	CA	A	504	1/1	0.99	0.09	76,76,76,76	0

The following is a graphical depiction of the model fit to experimental electron density of all instances of the Ligand of Interest. In addition, ligands with molecular weight > 250 and outliers as shown on the geometry validation Tables will also be included. Each fit is shown from different orientation to approximate a three-dimensional view.



6.5 Other polymers [i](#)

There are no such residues in this entry.