



Full wwPDB X-ray Structure Validation Report ⓘ

Oct 16, 2023 – 09:06 PM EDT

PDB ID : 2DCY
Title : Crystal structure of Bacillus subtilis family-11 xylanase
Authors : Kondo, H.; Miyazaki, K.; Takenouchi, M.; Noro, N.; Suzuki, M.; Tsuda, S.
Deposited on : 2006-01-18
Resolution : 1.40 Å(reported)

This is a Full wwPDB X-ray Structure Validation Report for a publicly released PDB entry.

We welcome your comments at validation@mail.wwpdb.org

A user guide is available at

<https://www.wwpdb.org/validation/2017/XrayValidationReportHelp>

with specific help available everywhere you see the ⓘ symbol.

The types of validation reports are described at

<http://www.wwpdb.org/validation/2017/FAQs#types>.

The following versions of software and data (see [references ⓘ](#)) were used in the production of this report:

MolProbity : 4.02b-467
Mogul : 1.8.5 (274361), CSD as541be (2020)
Xtriage (Phenix) : 1.13
EDS : 2.36
Percentile statistics : 20191225.v01 (using entries in the PDB archive December 25th 2019)
Refmac : 5.8.0158
CCP4 : 7.0.044 (Gargrove)
Ideal geometry (proteins) : Engh & Huber (2001)
Ideal geometry (DNA, RNA) : Parkinson et al. (1996)
Validation Pipeline (wwPDB-VP) : 2.36

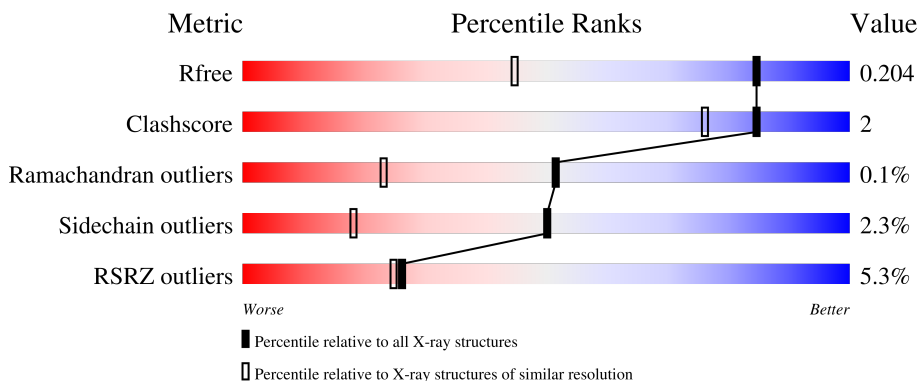
1 Overall quality at a glance

The following experimental techniques were used to determine the structure:

X-RAY DIFFRACTION

The reported resolution of this entry is 1.40 Å.

Percentile scores (ranging between 0-100) for global validation metrics of the entry are shown in the following graphic. The table shows the number of entries on which the scores are based.



Metric	Whole archive (#Entries)	Similar resolution (#Entries, resolution range(Å))
R_{free}	130704	1714 (1.40-1.40)
Clashscore	141614	1812 (1.40-1.40)
Ramachandran outliers	138981	1763 (1.40-1.40)
Sidechain outliers	138945	1762 (1.40-1.40)
RSRZ outliers	127900	1674 (1.40-1.40)

The table below summarises the geometric issues observed across the polymeric chains and their fit to the electron density. The red, orange, yellow and green segments of the lower bar indicate the fraction of residues that contain outliers for ≥ 3 , 2, 1 and 0 types of geometric quality criteria respectively. A grey segment represents the fraction of residues that are not modelled. The numeric value for each fraction is indicated below the corresponding segment, with a dot representing fractions $\leq 5\%$. The upper red bar (where present) indicates the fraction of residues that have poor fit to the electron density. The numeric value is given above the bar.

Mol	Chain	Length	Quality of chain
1	A	185	
1	B	185	
1	C	185	
1	D	185	
1	E	185	

The following table lists non-polymeric compounds, carbohydrate monomers and non-standard residues in protein, DNA, RNA chains that are outliers for geometric or electron-density-fit criteria:

Mol	Type	Chain	Res	Chirality	Geometry	Clashes	Electron density
3	TLA	B	502	-	-	-	X
3	TLA	B	503	-	X	X	-

2 Entry composition [i](#)

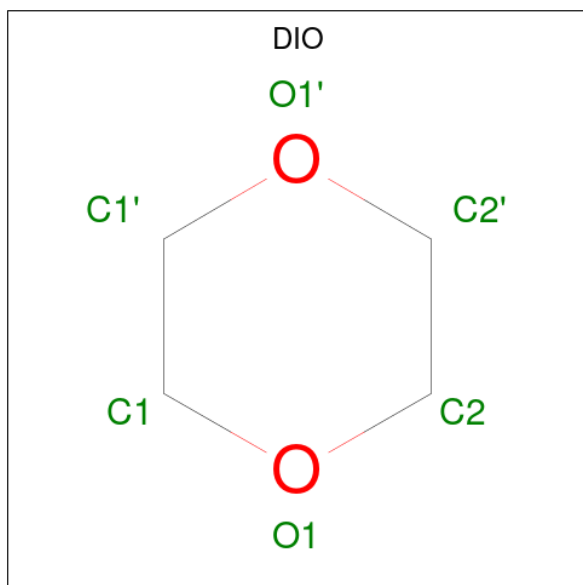
There are 5 unique types of molecules in this entry. The entry contains 7611 atoms, of which 0 are hydrogens and 0 are deuteriums.

In the tables below, the ZeroOcc column contains the number of atoms modelled with zero occupancy, the AltConf column contains the number of residues with at least one atom in alternate conformation and the Trace column contains the number of residues modelled with at most 2 atoms.

- Molecule 1 is a protein called Endo-1,4-beta-xylanase A.

Mol	Chain	Residues	Atoms					ZeroOcc	AltConf	Trace
			Total	C	N	O	S			
1	A	185	Total 1459	C 918	N 249	O 290	S 2	0	5	0
1	B	185	Total 1453	C 914	N 249	O 288	S 2	0	3	0
1	C	185	Total 1460	C 919	N 252	O 287	S 2	0	3	0
1	D	185	Total 1447	C 911	N 249	O 285	S 2	0	0	0
1	E	185	Total 1456	C 916	N 252	O 286	S 2	0	2	0

- Molecule 2 is 1,4-DIETHYLENE DIOXIDE (three-letter code: DIO) (formula: C₄H₈O₂).



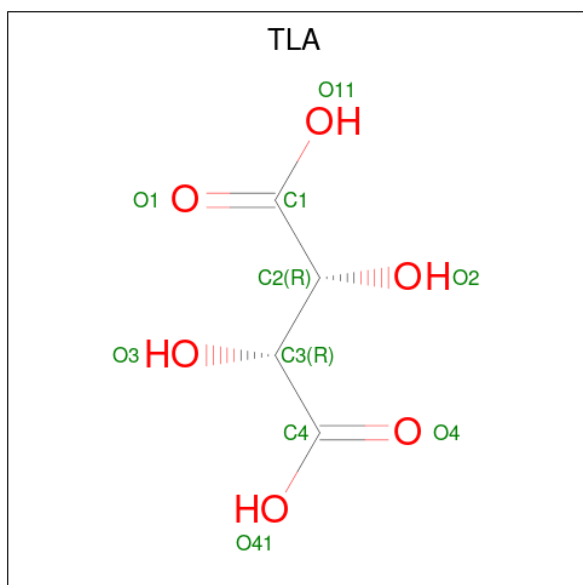
Mol	Chain	Residues	Atoms			ZeroOcc	AltConf
			Total	C	O		
2	A	1	Total 6	C 4	O 2	0	0

Continued on next page...

Continued from previous page...

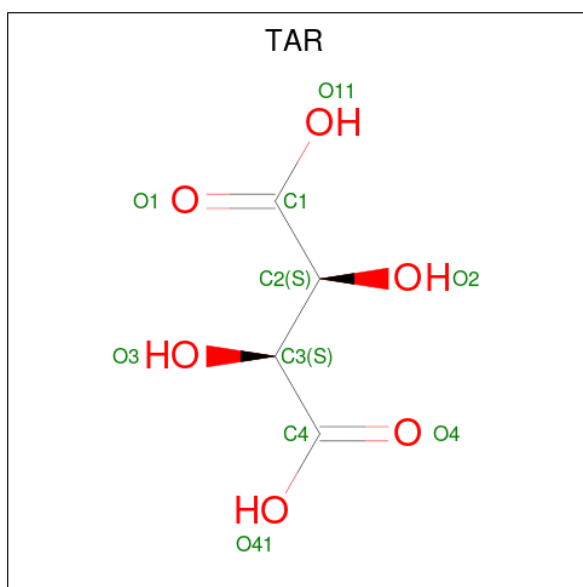
Mol	Chain	Residues	Atoms	ZeroOcc	AltConf
2	B	1	Total C O 6 4 2	0	0
2	C	1	Total C O 6 4 2	0	0

- Molecule 3 is L(+)-TARTARIC ACID (three-letter code: TLA) (formula: C₄H₆O₆).



Mol	Chain	Residues	Atoms	ZeroOcc	AltConf
3	A	1	Total C O 10 4 6	0	0
3	B	1	Total C O 10 4 6	0	0
3	B	1	Total C O 10 4 6	0	0
3	B	1	Total C O 10 4 6	0	0
3	C	1	Total C O 10 4 6	0	0
3	E	1	Total C O 10 4 6	0	0

- Molecule 4 is D(-)-TARTARIC ACID (three-letter code: TAR) (formula: C₄H₆O₆).



Mol	Chain	Residues	Atoms	ZeroOcc	AltConf
4	A	1	Total C O 10 4 6	0	0

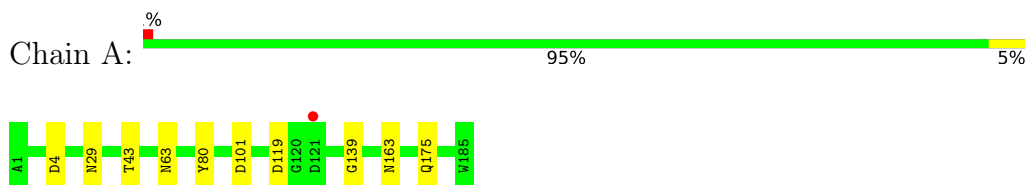
- Molecule 5 is water.

Mol	Chain	Residues	Atoms	ZeroOcc	AltConf
5	A	75	Total O 75 75	0	0
5	B	76	Total O 76 76	0	0
5	C	46	Total O 46 46	0	0
5	D	8	Total O 8 8	0	0
5	E	43	Total O 43 43	0	0

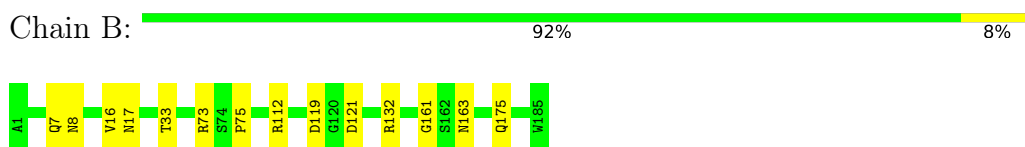
3 Residue-property plots i

These plots are drawn for all protein, RNA, DNA and oligosaccharide chains in the entry. The first graphic for a chain summarises the proportions of the various outlier classes displayed in the second graphic. The second graphic shows the sequence view annotated by issues in geometry and electron density. Residues are color-coded according to the number of geometric quality criteria for which they contain at least one outlier: green = 0, yellow = 1, orange = 2 and red = 3 or more. A red dot above a residue indicates a poor fit to the electron density ($RSRZ > 2$). Stretches of 2 or more consecutive residues without any outlier are shown as a green connector. Residues present in the sample, but not in the model, are shown in grey.

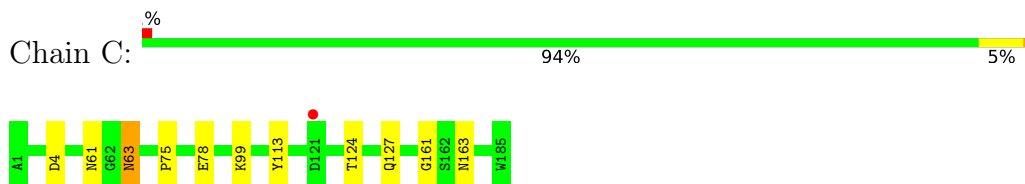
- Molecule 1: Endo-1,4-beta-xylanase A



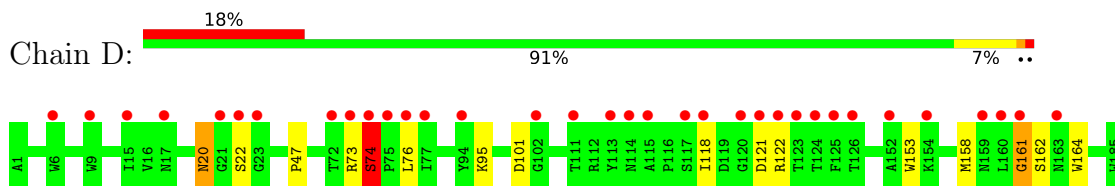
- Molecule 1: Endo-1,4-beta-xylanase A



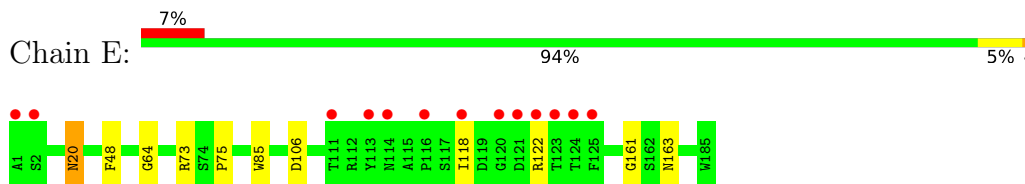
- Molecule 1: Endo-1,4-beta-xylanase A



- Molecule 1: Endo-1,4-beta-xylanase A



- Molecule 1: Endo-1,4-beta-xylanase A



4 Data and refinement statistics

Property	Value	Source
Space group	P 21 21 2	Depositor
Cell constants a, b, c, α , β , γ	130.44Å 186.21Å 37.98Å 90.00° 90.00° 90.00°	Depositor
Resolution (Å)	20.00 – 1.40 31.44 – 1.30	Depositor EDS
% Data completeness (in resolution range)	97.5 (20.00-1.40) 89.0 (31.44-1.30)	Depositor EDS
R_{merge}	0.04	Depositor
R_{sym}	0.04	Depositor
$\langle I/\sigma(I) \rangle$ ¹	1.24 (at 1.30Å)	Xtrriage
Refinement program	REFMAC 5.1.24	Depositor
R, R_{free}	0.197 , 0.217 0.205 , 0.204	Depositor DCC
R_{free} test set	10098 reflections (4.94%)	wwPDB-VP
Wilson B-factor (Å ²)	11.1	Xtrriage
Anisotropy	0.125	Xtrriage
Bulk solvent k_{sol} (e/Å ³), B_{sol} (Å ²)	0.44 , 44.1	EDS
L-test for twinning ²	$\langle L \rangle = 0.49$, $\langle L^2 \rangle = 0.33$	Xtrriage
Estimated twinning fraction	No twinning to report.	Xtrriage
F_o, F_c correlation	0.95	EDS
Total number of atoms	7611	wwPDB-VP
Average B, all atoms (Å ²)	15.0	wwPDB-VP

Xtrriage's analysis on translational NCS is as follows: *The largest off-origin peak in the Patterson function is 5.08% of the height of the origin peak. No significant pseudotranslation is detected.*

¹Intensities estimated from amplitudes.

²Theoretical values of $\langle |L| \rangle$, $\langle L^2 \rangle$ for acentric reflections are 0.5, 0.333 respectively for untwinned datasets, and 0.375, 0.2 for perfectly twinned datasets.

5 Model quality [i](#)

5.1 Standard geometry [i](#)

Bond lengths and bond angles in the following residue types are not validated in this section: DIO, TAR, TLA

The Z score for a bond length (or angle) is the number of standard deviations the observed value is removed from the expected value. A bond length (or angle) with $|Z| > 5$ is considered an outlier worth inspection. RMSZ is the root-mean-square of all Z scores of the bond lengths (or angles).

Mol	Chain	Bond lengths		Bond angles	
		RMSZ	# Z >5	RMSZ	# Z >5
1	A	0.90	1/1527 (0.1%)	0.94	3/2092 (0.1%)
1	B	0.86	0/1513	1.00	4/2072 (0.2%)
1	C	0.87	1/1520 (0.1%)	0.91	2/2082 (0.1%)
1	D	0.70	0/1495	0.87	1/2048 (0.0%)
1	E	0.75	0/1512	0.90	1/2070 (0.0%)
All	All	0.82	2/7567 (0.0%)	0.93	11/10364 (0.1%)

Chiral center outliers are detected by calculating the chiral volume of a chiral center and verifying if the center is modelled as a planar moiety or with the opposite hand. A planarity outlier is detected by checking planarity of atoms in a peptide group, atoms in a mainchain group or atoms of a sidechain that are expected to be planar.

Mol	Chain	#Chirality outliers	#Planarity outliers
1	D	0	2

All (2) bond length outliers are listed below:

Mol	Chain	Res	Type	Atoms	Z	Observed(Å)	Ideal(Å)
1	A	80	TYR	CE2-CZ	-5.55	1.31	1.38
1	C	99	LYS	CD-CE	5.42	1.64	1.51

All (11) bond angle outliers are listed below:

Mol	Chain	Res	Type	Atoms	Z	Observed(°)	Ideal(°)
1	B	121	ASP	CB-CG-OD2	7.13	124.72	118.30
1	C	4	ASP	CB-CG-OD2	6.93	124.53	118.30
1	B	132	ARG	NE-CZ-NH2	-6.59	117.00	120.30
1	A	119	ASP	CB-CG-OD2	6.33	124.00	118.30
1	C	99	LYS	CD-CE-NZ	6.17	125.89	111.70
1	A	101	ASP	CB-CG-OD2	6.10	123.79	118.30

Continued on next page...

Continued from previous page...

Mol	Chain	Res	Type	Atoms	Z	Observed(°)	Ideal(°)
1	B	73	ARG	NE-CZ-NH2	-5.79	117.40	120.30
1	D	101	ASP	CB-CG-OD2	5.73	123.46	118.30
1	A	80	TYR	CB-CG-CD2	-5.46	117.72	121.00
1	B	119	ASP	CB-CG-OD2	5.37	123.14	118.30
1	E	106	ASP	CB-CG-OD2	5.08	122.87	118.30

There are no chirality outliers.

All (2) planarity outliers are listed below:

Mol	Chain	Res	Type	Group
1	D	161	GLY	Peptide
1	D	74	SER	Peptide

5.2 Too-close contacts [i](#)

In the following table, the Non-H and H(model) columns list the number of non-hydrogen atoms and hydrogen atoms in the chain respectively. The H(added) column lists the number of hydrogen atoms added and optimized by MolProbity. The Clashes column lists the number of clashes within the asymmetric unit, whereas Symm-Clashes lists symmetry-related clashes.

Mol	Chain	Non-H	H(model)	H(added)	Clashes	Symm-Clashes
1	A	1459	0	1329	5	0
1	B	1453	0	1323	6	0
1	C	1460	0	1335	4	0
1	D	1447	0	1320	12	0
1	E	1456	0	1330	5	0
2	A	6	0	8	2	0
2	B	6	0	8	1	0
2	C	6	0	8	1	0
3	A	10	0	4	0	0
3	B	30	0	12	5	0
3	C	10	0	4	0	0
3	E	10	0	4	0	0
4	A	10	0	4	0	0
5	A	75	0	0	0	0
5	B	76	0	0	1	0
5	C	46	0	0	1	0
5	D	8	0	0	0	0
5	E	43	0	0	0	0
All	All	7611	0	6689	33	0

The all-atom clashscore is defined as the number of clashes found per 1000 atoms (including hydrogen atoms). The all-atom clashscore for this structure is 2.

All (33) close contacts within the same asymmetric unit are listed below, sorted by their clash magnitude.

Atom-1	Atom-2	Interatomic distance (Å)	Clash overlap (Å)
1:D:73:ARG:O	1:D:74:SER:HB3	1.47	1.06
1:A:29:ASN:HD22	2:A:602:DIO:H1'2	1.41	0.86
2:C:601:DIO:H11	5:C:638:HOH:O	1.77	0.82
1:B:112:ARG:NH1	3:B:503:TLA:O11	2.14	0.80
1:A:175:GLN:O	3:B:503:TLA:O1	2.03	0.76
1:D:74:SER:CB	1:D:162:SER:H	2.01	0.73
1:D:73:ARG:O	1:D:74:SER:CB	2.32	0.69
1:D:20:ASN:C	1:D:20:ASN:HD22	2.00	0.65
3:B:503:TLA:O1	5:B:633:HOH:O	2.15	0.64
1:B:112:ARG:HH12	3:B:503:TLA:C1	2.11	0.64
1:A:4:ASP:OD1	1:A:43[B]:THR:HG23	2.03	0.58
1:A:29:ASN:ND2	2:A:602:DIO:H1'2	2.16	0.58
1:D:74:SER:HB3	1:D:162:SER:H	1.70	0.52
1:B:75:PRO:HD2	1:B:161:GLY:HA2	1.92	0.51
1:B:16:VAL:O	3:B:502:TLA:H3	2.12	0.49
1:E:75:PRO:HD2	1:E:161:GLY:HA2	1.94	0.49
1:E:73:ARG:CZ	1:E:118:ILE:HD12	2.43	0.48
1:E:20:ASN:C	1:E:20:ASN:HD22	2.17	0.48
1:D:74:SER:O	1:D:74:SER:OG	2.29	0.48
1:C:113:TYR:HA	1:C:124:THR:HG22	1.96	0.47
1:D:76:LEU:HD11	1:D:118:ILE:HG12	1.98	0.45
1:A:139:GLY:HA3	1:E:48:PHE:CD1	2.52	0.44
1:C:75:PRO:HD2	1:C:161:GLY:HA2	2.00	0.44
1:D:47:PRO:HD3	1:D:164:TRP:CZ2	2.53	0.44
1:D:74:SER:OG	1:D:161:GLY:HA3	2.18	0.44
1:D:153:TRP:HB3	1:D:158:MET:HB2	2.01	0.43
1:C:63:ASN:C	1:C:63:ASN:HD22	2.23	0.42
1:C:78:GLU:O	1:C:127:GLN:HA	2.19	0.42
1:D:74:SER:OG	1:D:162:SER:N	2.49	0.42
1:B:17:ASN:CB	2:B:603:DIO:H1'1	2.49	0.41
1:B:33:THR:O	1:B:175:GLN:HA	2.20	0.41
1:E:64:GLY:O	1:E:85:TRP:HA	2.20	0.41
1:D:20:ASN:C	1:D:20:ASN:ND2	2.71	0.41

There are no symmetry-related clashes.

5.3 Torsion angles [i](#)

5.3.1 Protein backbone [i](#)

In the following table, the Percentiles column shows the percent Ramachandran outliers of the chain as a percentile score with respect to all X-ray entries followed by that with respect to entries of similar resolution.

The Analysed column shows the number of residues for which the backbone conformation was analysed, and the total number of residues.

Mol	Chain	Analysed	Favoured	Allowed	Outliers	Percentiles	
1	A	188/185 (102%)	185 (98%)	3 (2%)	0	100	100
1	B	186/185 (100%)	184 (99%)	2 (1%)	0	100	100
1	C	186/185 (100%)	182 (98%)	4 (2%)	0	100	100
1	D	183/185 (99%)	177 (97%)	5 (3%)	1 (0%)	29	9
1	E	185/185 (100%)	181 (98%)	4 (2%)	0	100	100
All	All	928/925 (100%)	909 (98%)	18 (2%)	1 (0%)	51	23

All (1) Ramachandran outliers are listed below:

Mol	Chain	Res	Type
1	D	74	SER

5.3.2 Protein sidechains [i](#)

In the following table, the Percentiles column shows the percent sidechain outliers of the chain as a percentile score with respect to all X-ray entries followed by that with respect to entries of similar resolution.

The Analysed column shows the number of residues for which the sidechain conformation was analysed, and the total number of residues.

Mol	Chain	Analysed	Rotameric	Outliers	Percentiles	
1	A	156/151 (103%)	154 (99%)	2 (1%)	69	42
1	B	154/151 (102%)	151 (98%)	3 (2%)	57	25
1	C	154/151 (102%)	151 (98%)	3 (2%)	57	25
1	D	151/151 (100%)	145 (96%)	6 (4%)	31	5
1	E	153/151 (101%)	150 (98%)	3 (2%)	55	23
All	All	768/755 (102%)	751 (98%)	17 (2%)	50	19

All (17) residues with a non-rotameric sidechain are listed below:

Mol	Chain	Res	Type
1	A	63	ASN
1	A	163	ASN
1	B	7	GLN
1	B	8	ASN
1	B	163	ASN
1	C	61	ASN
1	C	63	ASN
1	C	163	ASN
1	D	20	ASN
1	D	22	SER
1	D	74	SER
1	D	95	LYS
1	D	121	ASP
1	D	122	ARG
1	E	20	ASN
1	E	122	ARG
1	E	163	ASN

Sometimes sidechains can be flipped to improve hydrogen bonding and reduce clashes. All (27) such sidechains are listed below:

Mol	Chain	Res	Type
1	A	8	ASN
1	A	17	ASN
1	A	29	ASN
1	A	32	ASN
1	A	63	ASN
1	A	114	ASN
1	A	163	ASN
1	B	8	ASN
1	B	61	ASN
1	B	114	ASN
1	B	163	ASN
1	C	7	GLN
1	C	8	ASN
1	C	32	ASN
1	C	61	ASN
1	C	63	ASN
1	C	163	ASN
1	D	7	GLN
1	D	8	ASN
1	D	20	ASN

Continued on next page...

Continued from previous page...

Mol	Chain	Res	Type
1	D	61	ASN
1	D	148	ASN
1	E	8	ASN
1	E	20	ASN
1	E	61	ASN
1	E	133	GLN
1	E	163	ASN

5.3.3 RNA [i](#)

There are no RNA molecules in this entry.

5.4 Non-standard residues in protein, DNA, RNA chains [i](#)

There are no non-standard protein/DNA/RNA residues in this entry.

5.5 Carbohydrates [i](#)

There are no monosaccharides in this entry.

5.6 Ligand geometry [i](#)

10 ligands are modelled in this entry.

In the following table, the Counts columns list the number of bonds (or angles) for which Mogul statistics could be retrieved, the number of bonds (or angles) that are observed in the model and the number of bonds (or angles) that are defined in the Chemical Component Dictionary. The Link column lists molecule types, if any, to which the group is linked. The Z score for a bond length (or angle) is the number of standard deviations the observed value is removed from the expected value. A bond length (or angle) with $|Z| > 2$ is considered an outlier worth inspection. RMSZ is the root-mean-square of all Z scores of the bond lengths (or angles).

Mol	Type	Chain	Res	Link	Bond lengths			Bond angles		
					Counts	RMSZ	# Z > 2	Counts	RMSZ	# Z > 2
3	TLA	C	506	-	9,9,9	1.68	2 (22%)	12,12,12	1.51	3 (25%)
2	DIO	C	601	-	6,6,6	0.31	0	6,6,6	2.73	2 (33%)
2	DIO	B	603	-	6,6,6	0.73	0	6,6,6	3.31	2 (33%)
3	TLA	A	504	-	9,9,9	1.50	2 (22%)	12,12,12	1.50	1 (8%)
3	TLA	E	501	-	9,9,9	1.99	3 (33%)	12,12,12	2.05	3 (25%)

Mol	Type	Chain	Res	Link	Bond lengths			Bond angles		
					Counts	RMSZ	# Z > 2	Counts	RMSZ	# Z > 2
2	DIO	A	602	-	6,6,6	0.57	0	6,6,6	2.49	2 (33%)
3	TLA	B	502	-	9,9,9	0.63	0	12,12,12	1.70	4 (33%)
3	TLA	B	503	-	9,9,9	2.30	4 (44%)	12,12,12	1.77	4 (33%)
3	TLA	B	505	-	9,9,9	1.99	4 (44%)	12,12,12	1.03	0
4	TAR	A	507	-	9,9,9	1.40	1 (11%)	12,12,12	2.30	5 (41%)

In the following table, the Chirals column lists the number of chiral outliers, the number of chiral centers analysed, the number of these observed in the model and the number defined in the Chemical Component Dictionary. Similar counts are reported in the Torsion and Rings columns. '-' means no outliers of that kind were identified.

Mol	Type	Chain	Res	Link	Chirals	Torsions	Rings
3	TLA	C	506	-	-	0/12/12/12	-
2	DIO	C	601	-	-	-	0/1/1/1
2	DIO	B	603	-	-	-	0/1/1/1
3	TLA	A	504	-	-	0/12/12/12	-
3	TLA	E	501	-	-	0/12/12/12	-
3	TLA	B	502	-	-	8/12/12/12	-
3	TLA	B	503	-	-	6/12/12/12	-
2	DIO	A	602	-	-	-	0/1/1/1
3	TLA	B	505	-	-	0/12/12/12	-
4	TAR	A	507	-	-	4/12/12/12	-

All (16) bond length outliers are listed below:

Mol	Chain	Res	Type	Atoms	Z	Observed(Å)	Ideal(Å)
3	B	503	TLA	C2-C1	-4.53	1.46	1.52
3	C	506	TLA	O1-C1	3.95	1.34	1.22
3	E	501	TLA	O1-C1	3.44	1.32	1.22
3	E	501	TLA	C3-C4	-3.43	1.48	1.52
3	B	505	TLA	O4-C4	3.27	1.32	1.22
3	B	503	TLA	O1-C1	3.17	1.31	1.22
3	A	504	TLA	O4-C4	3.06	1.31	1.22
4	A	507	TAR	O1-C1	2.93	1.31	1.22
3	B	505	TLA	O1-C1	2.83	1.30	1.22
3	B	505	TLA	O11-C1	-2.82	1.21	1.30
3	B	503	TLA	C3-C4	-2.77	1.48	1.52
3	B	503	TLA	O11-C1	-2.51	1.22	1.30
3	E	501	TLA	O11-C1	-2.20	1.23	1.30
3	B	505	TLA	C3-C4	-2.19	1.49	1.52

Continued on next page...

Continued from previous page...

Mol	Chain	Res	Type	Atoms	Z	Observed(Å)	Ideal(Å)
3	A	504	TLA	O41-C4	-2.18	1.23	1.30
3	C	506	TLA	O11-C1	-2.18	1.23	1.30

All (26) bond angle outliers are listed below:

Mol	Chain	Res	Type	Atoms	Z	Observed(°)	Ideal(°)
2	B	603	DIO	C2'-O1'-C1'	5.57	128.49	109.89
2	B	603	DIO	C2-O1-C1	5.54	128.40	109.89
3	E	501	TLA	O41-C4-C3	4.63	125.80	113.27
2	C	601	DIO	C2'-O1'-C1'	4.41	124.62	109.89
4	A	507	TAR	O11-C1-C2	4.23	124.71	113.27
2	C	601	DIO	C2-O1-C1	4.16	123.78	109.89
2	A	602	DIO	C2-O1-C1	3.84	122.71	109.89
4	A	507	TAR	O11-C1-O1	-3.61	115.89	124.09
2	A	602	DIO	C2'-O1'-C1'	3.38	121.17	109.89
3	A	504	TLA	O41-C4-C3	3.23	122.01	113.27
3	B	502	TLA	O11-C1-C2	3.22	121.97	113.27
3	E	501	TLA	O11-C1-C2	3.05	121.52	113.27
4	A	507	TAR	O41-C4-O4	-2.99	117.30	124.09
3	E	501	TLA	O4-C4-C3	-2.87	114.08	121.63
3	C	506	TLA	O11-C1-C2	2.86	121.00	113.27
4	A	507	TAR	O41-C4-C3	2.74	120.68	113.27
3	C	506	TLA	O11-C1-O1	-2.67	118.02	124.09
4	A	507	TAR	C3-C2-C1	2.66	115.82	109.87
3	B	502	TLA	O41-C4-C3	2.63	120.38	113.27
3	C	506	TLA	O3-C3-C4	-2.54	105.33	110.66
3	B	502	TLA	O41-C4-O4	-2.54	118.32	124.09
3	B	503	TLA	O41-C4-C3	2.47	119.94	113.27
3	B	503	TLA	O11-C1-O1	-2.42	118.59	124.09
3	B	503	TLA	O11-C1-C2	2.34	119.60	113.27
3	B	502	TLA	O11-C1-O1	-2.23	119.02	124.09
3	B	503	TLA	O3-C3-C4	-2.01	106.44	110.66

There are no chirality outliers.

All (18) torsion outliers are listed below:

Mol	Chain	Res	Type	Atoms
3	B	502	TLA	C1-C2-C3-O3
3	B	502	TLA	C1-C2-C3-C4
3	B	502	TLA	O2-C2-C3-O3
3	B	502	TLA	O2-C2-C3-C4
3	B	503	TLA	O3-C3-C4-O4

Continued on next page...

Continued from previous page...

Mol	Chain	Res	Type	Atoms
3	B	503	TLA	O3-C3-C4-O41
3	B	503	TLA	O1-C1-C2-O2
4	A	507	TAR	O1-C1-C2-O2
4	A	507	TAR	O11-C1-C2-O2
3	B	503	TLA	O1-C1-C2-C3
3	B	503	TLA	O11-C1-C2-C3
3	B	503	TLA	O11-C1-C2-O2
4	A	507	TAR	O11-C1-C2-C3
3	B	502	TLA	O11-C1-C2-C3
4	A	507	TAR	O1-C1-C2-C3
3	B	502	TLA	O1-C1-C2-C3
3	B	502	TLA	O11-C1-C2-O2
3	B	502	TLA	O1-C1-C2-O2

There are no ring outliers.

5 monomers are involved in 9 short contacts:

Mol	Chain	Res	Type	Clashes	Symm-Clashes
2	C	601	DIO	1	0
2	B	603	DIO	1	0
2	A	602	DIO	2	0
3	B	502	TLA	1	0
3	B	503	TLA	4	0

5.7 Other polymers [i](#)

There are no such residues in this entry.

5.8 Polymer linkage issues [i](#)

There are no chain breaks in this entry.

6 Fit of model and data

6.1 Protein, DNA and RNA chains

In the following table, the column labelled ‘#RSRZ > 2’ contains the number (and percentage) of RSRZ outliers, followed by percent RSRZ outliers for the chain as percentile scores relative to all X-ray entries and entries of similar resolution. The OWAB column contains the minimum, median, 95th percentile and maximum values of the occupancy-weighted average B-factor per residue. The column labelled ‘Q < 0.9’ lists the number of (and percentage) of residues with an average occupancy less than 0.9.

Mol	Chain	Analysed	<RSRZ>	#RSRZ>2	OWAB(Å ²)	Q<0.9
1	A	185/185 (100%)	-0.10	1 (0%) 91 89	7, 10, 18, 25	0
1	B	185/185 (100%)	-0.10	0 100 100	7, 10, 16, 21	0
1	C	185/185 (100%)	-0.01	1 (0%) 91 89	9, 13, 19, 27	0
1	D	185/185 (100%)	1.08	34 (18%) 1 1	13, 23, 36, 47	0
1	E	185/185 (100%)	0.22	13 (7%) 16 15	9, 15, 28, 45	0
All	All	925/925 (100%)	0.22	49 (5%) 26 25	7, 13, 28, 47	0

All (49) RSRZ outliers are listed below:

Mol	Chain	Res	Type	RSRZ
1	D	121	ASP	7.4
1	D	74	SER	7.1
1	E	113	TYR	6.9
1	E	122	ARG	6.0
1	D	113	TYR	5.9
1	E	114	ASN	5.1
1	D	75	PRO	5.0
1	D	114	ASN	4.9
1	E	121	ASP	4.8
1	D	118	ILE	4.6
1	E	1	ALA	4.5
1	D	122	ARG	4.4
1	D	120	GLY	4.3
1	D	76	LEU	4.1
1	E	124	THR	3.9
1	D	22	SER	3.9
1	D	77	ILE	3.7
1	D	160	LEU	3.6
1	D	125	PHE	3.5
1	D	94	TYR	3.4

Continued on next page...

Continued from previous page...

Mol	Chain	Res	Type	RSRZ
1	D	117	SER	3.4
1	D	23	GLY	3.1
1	D	161	GLY	3.1
1	D	126	THR	2.9
1	D	73	ARG	2.9
1	D	154	LYS	2.8
1	D	21	GLY	2.7
1	E	125	PHE	2.7
1	D	15	ILE	2.6
1	E	120	GLY	2.6
1	C	121	ASP	2.6
1	D	163	ASN	2.6
1	E	111	THR	2.5
1	E	118	ILE	2.5
1	D	111	THR	2.4
1	D	17	ASN	2.4
1	D	115	ALA	2.4
1	D	124	THR	2.3
1	D	159	ASN	2.3
1	D	9	TRP	2.3
1	A	121	ASP	2.2
1	D	152	ALA	2.2
1	E	123	THR	2.2
1	E	116	PRO	2.2
1	E	2	SER	2.1
1	D	102	GLY	2.1
1	D	6	TRP	2.1
1	D	72	THR	2.1
1	D	123	THR	2.1

6.2 Non-standard residues in protein, DNA, RNA chains [i](#)

There are no non-standard protein/DNA/RNA residues in this entry.

6.3 Carbohydrates [i](#)

There are no monosaccharides in this entry.

6.4 Ligands [i](#)

In the following table, the Atoms column lists the number of modelled atoms in the group and the number defined in the chemical component dictionary. The B-factors column lists the minimum, median, 95th percentile and maximum values of B factors of atoms in the group. The column labelled 'Q< 0.9' lists the number of atoms with occupancy less than 0.9.

Mol	Type	Chain	Res	Atoms	RSCC	RSR	B-factors(Å ²)	Q<0.9
3	TLA	B	502	10/10	0.14	0.45	77,79,80,80	0
2	DIO	A	602	6/6	0.39	0.18	40,41,41,41	0
2	DIO	C	601	6/6	0.80	0.16	30,31,33,33	0
3	TLA	B	503	10/10	0.85	0.31	9,19,32,33	0
2	DIO	B	603	6/6	0.87	0.22	21,22,25,25	0
3	TLA	A	504	10/10	0.88	0.22	15,26,31,32	0
4	TAR	A	507	10/10	0.90	0.22	10,18,33,35	0
3	TLA	C	506	10/10	0.91	0.14	16,18,19,20	0
3	TLA	B	505	10/10	0.93	0.09	14,16,21,22	0
3	TLA	E	501	10/10	0.95	0.13	10,18,22,26	0

6.5 Other polymers [i](#)

There are no such residues in this entry.