



Full wwPDB X-ray Structure Validation Report ⓘ

May 14, 2020 – 12:56 pm BST

PDB ID : 2CLE
Title : Tryptophan Synthase in complex with N-(4'-trifluoromethoxybenzoyl)-2- amino-1-ethylphosphate (F6) - lowF6 complex
Authors : Ngo, H.; Harris, R.; Kimmich, N.; Casino, P.; Niks, D.; Blumenstein, L.; Barends, T.R.; Kulik, V.; Weyand, M.; Schlichting, I.; Dunn, M.F.
Deposited on : 2006-04-27
Resolution : 1.50 Å(reported)

This is a Full wwPDB X-ray Structure Validation Report for a publicly released PDB entry.

We welcome your comments at validation@mail.wwpdb.org

A user guide is available at

<https://www.wwpdb.org/validation/2017/XrayValidationReportHelp>

with specific help available everywhere you see the ⓘ symbol.

The following versions of software and data (see [references ⓘ](#)) were used in the production of this report:

MolProbity : 4.02b-467
Mogul : 1.8.5 (274361), CSD as541be (2020)
Xtriage (Phenix) : 1.13
EDS : 2.11
buster-report : 1.1.7 (2018)
Percentile statistics : 20191225.v01 (using entries in the PDB archive December 25th 2019)
Refmac : 5.8.0158
CCP4 : 7.0.044 (Gargrove)
Ideal geometry (proteins) : Engh & Huber (2001)
Ideal geometry (DNA, RNA) : Parkinson et al. (1996)
Validation Pipeline (wwPDB-VP) : 2.11

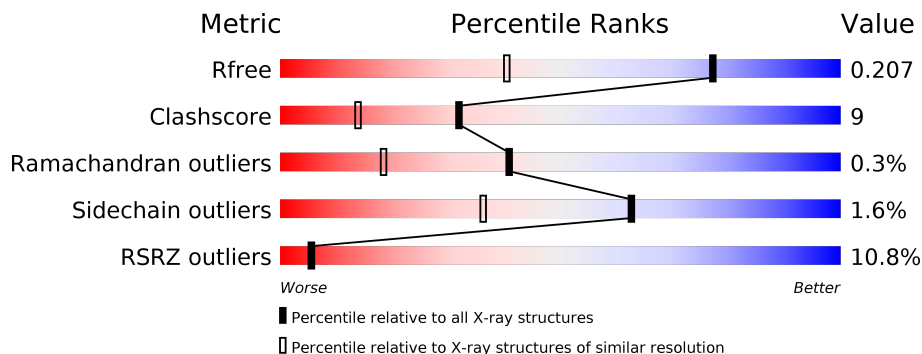
1 Overall quality at a glance

The following experimental techniques were used to determine the structure:

X-RAY DIFFRACTION

The reported resolution of this entry is 1.50 Å.

Percentile scores (ranging between 0-100) for global validation metrics of the entry are shown in the following graphic. The table shows the number of entries on which the scores are based.



Metric	Whole archive (#Entries)	Similar resolution (#Entries, resolution range(Å))
R_{free}	130704	2936 (1.50-1.50)
Clashscore	141614	3144 (1.50-1.50)
Ramachandran outliers	138981	3066 (1.50-1.50)
Sidechain outliers	138945	3064 (1.50-1.50)
RSRZ outliers	127900	2884 (1.50-1.50)

The table below summarises the geometric issues observed across the polymeric chains and their fit to the electron density. The red, orange, yellow and green segments on the lower bar indicate the fraction of residues that contain outliers for ≥ 3 , 2, 1 and 0 types of geometric quality criteria respectively. A grey segment represents the fraction of residues that are not modelled. The numeric value for each fraction is indicated below the corresponding segment, with a dot representing fractions $\leq 5\%$. The upper red bar (where present) indicates the fraction of residues that have poor fit to the electron density. The numeric value is given above the bar.

Mol	Chain	Length	Quality of chain
1	A	268	
2	B	396	

2 Entry composition

There are 6 unique types of molecules in this entry. The entry contains 5524 atoms, of which 0 are hydrogens and 0 are deuteriums.

In the tables below, the ZeroOcc column contains the number of atoms modelled with zero occupancy, the AltConf column contains the number of residues with at least one atom in alternate conformation and the Trace column contains the number of residues modelled with at most 2 atoms.

- Molecule 1 is a protein called TRYPTOPHAN SYNTHASE ALPHA CHAIN.

Mol	Chain	Residues	Atoms					ZeroOcc	AltConf	Trace
			Total	C	N	O	S			
1	A	252	1899	1210	328	354	7	0	0	1

- Molecule 2 is a protein called TRYPTOPHAN SYNTHASE BETA CHAIN.

Mol	Chain	Residues	Atoms					ZeroOcc	AltConf	Trace
			Total	C	N	O	S			
2	B	395	2987	1876	528	564	19	0	0	1

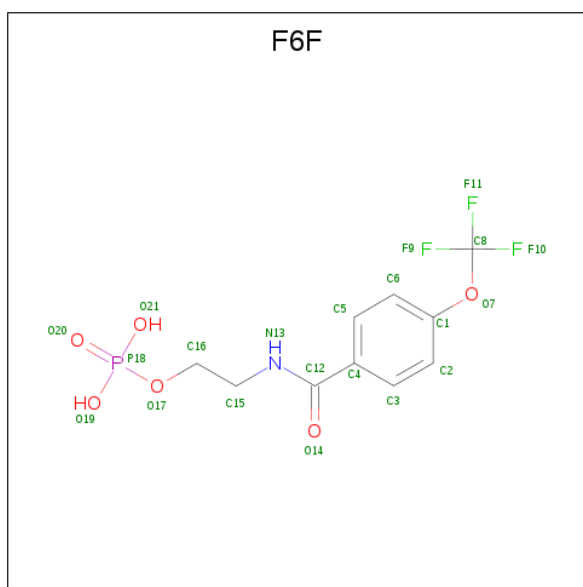
There is a discrepancy between the modelled and reference sequences:

Chain	Residue	Modelled	Actual	Comment	Reference
B	34	ARG	SER	conflict	UNP P0A2K1

- Molecule 3 is SODIUM ION (three-letter code: NA) (formula: Na).

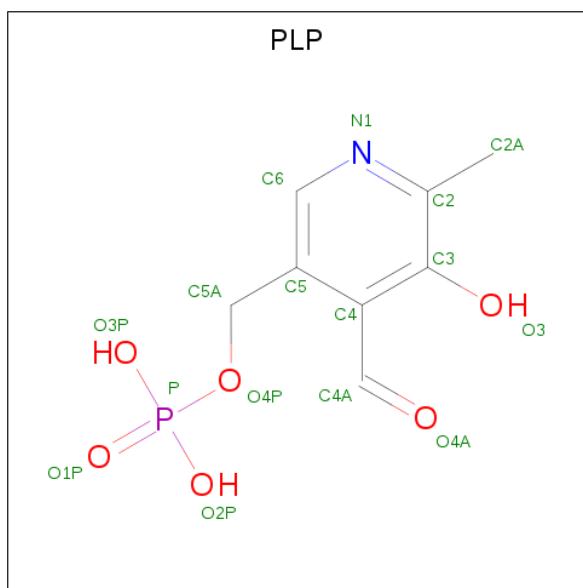
Mol	Chain	Residues	Atoms		ZeroOcc	AltConf
3	A	1	Total	Na	0	0
			1	1		

- Molecule 4 is 2-{[4-(TRIFLUOROMETHOXY)BENZOYL]AMINO}ETHYL DIHYDROGEN PHOSPHATE (three-letter code: F6F) (formula: C₁₀H₁₁F₃NO₆P).



Mol	Chain	Residues	Atoms					ZeroOcc	AltConf	
			Total	C	F	N	O			P
4	A	1	21	10	3	1	6	1	0	0

- Molecule 5 is PYRIDOXAL-5'-PHOSPHATE (three-letter code: PLP) (formula: C₈H₁₀NO₆P).



Mol	Chain	Residues	Atoms					ZeroOcc	AltConf
			Total	C	N	O	P		
5	B	1	15	8	1	5	1	0	0

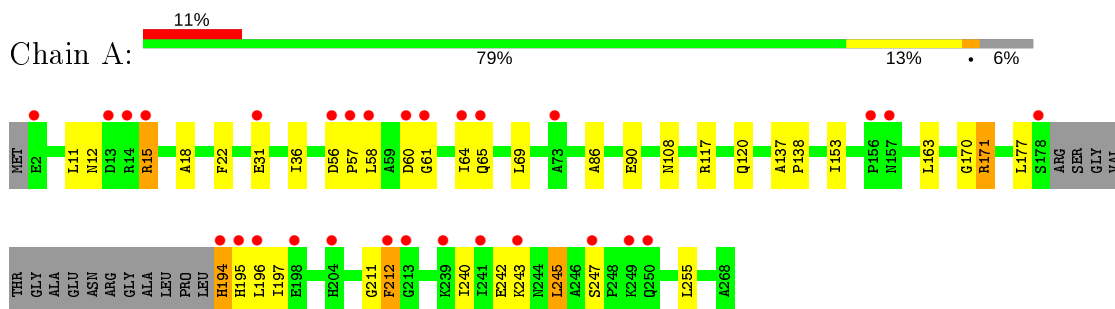
- Molecule 6 is water.

Mol	Chain	Residues	Atoms		ZeroOcc	AltConf
6	A	212	Total 212	O 212	0	0
6	B	389	Total 389	O 389	0	0

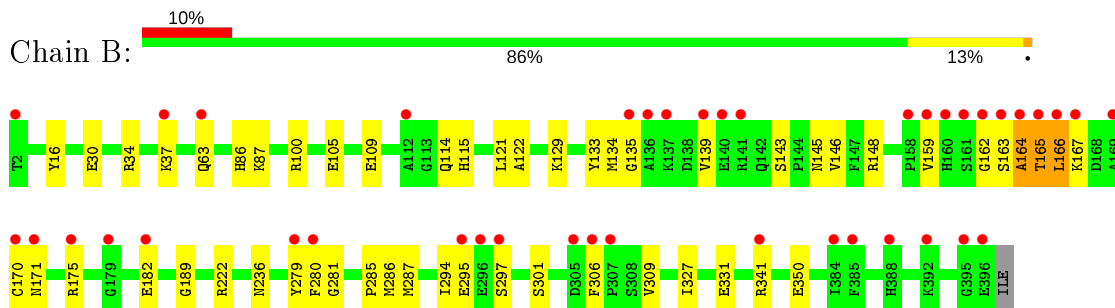
3 Residue-property plots [i](#)

These plots are drawn for all protein, RNA and DNA chains in the entry. The first graphic for a chain summarises the proportions of the various outlier classes displayed in the second graphic. The second graphic shows the sequence view annotated by issues in geometry and electron density. Residues are color-coded according to the number of geometric quality criteria for which they contain at least one outlier: green = 0, yellow = 1, orange = 2 and red = 3 or more. A red dot above a residue indicates a poor fit to the electron density ($RSRZ > 2$). Stretches of 2 or more consecutive residues without any outlier are shown as a green connector. Residues present in the sample, but not in the model, are shown in grey.

- Molecule 1: TRYPTOPHAN SYNTHASE ALPHA CHAIN



- Molecule 2: TRYPTOPHAN SYNTHASE BETA CHAIN



4 Data and refinement statistics

Property	Value	Source
Space group	C 1 2 1	Depositor
Cell constants a, b, c, α , β , γ	182.36Å 59.62Å 67.25Å 90.00° 94.73° 90.00°	Depositor
Resolution (Å)	19.92 – 1.50 19.92 – 1.43	Depositor EDS
% Data completeness (in resolution range)	96.7 (19.92-1.50) 94.8 (19.92-1.43)	Depositor EDS
R_{merge}	0.05	Depositor
R_{sym}	(Not available)	Depositor
$\langle I/\sigma(I) \rangle$ ¹	1.39 (at 1.42Å)	Xtrriage
Refinement program	CNS 1.1	Depositor
R, R_{free}	0.194 , 0.210 0.191 , 0.207	Depositor DCC
R_{free} test set	6336 reflections (5.00%)	wwPDB-VP
Wilson B-factor (Å ²)	13.3	Xtrriage
Anisotropy	0.557	Xtrriage
Bulk solvent k_{sol} (e/Å ³), B_{sol} (Å ²)	0.41 , 43.9	EDS
L-test for twinning ²	$\langle L \rangle = 0.48$, $\langle L^2 \rangle = 0.31$	Xtrriage
Estimated twinning fraction	No twinning to report.	Xtrriage
F_o, F_c correlation	0.96	EDS
Total number of atoms	5524	wwPDB-VP
Average B, all atoms (Å ²)	18.0	wwPDB-VP

Xtrriage's analysis on translational NCS is as follows: *The largest off-origin peak in the Patterson function is 5.87% of the height of the origin peak. No significant pseudotranslation is detected.*

¹Intensities estimated from amplitudes.

²Theoretical values of $\langle |L| \rangle$, $\langle L^2 \rangle$ for acentric reflections are 0.5, 0.333 respectively for untwinned datasets, and 0.375, 0.2 for perfectly twinned datasets.

5 Model quality [i](#)

5.1 Standard geometry [i](#)

Bond lengths and bond angles in the following residue types are not validated in this section: NA, PLP, F6F

The Z score for a bond length (or angle) is the number of standard deviations the observed value is removed from the expected value. A bond length (or angle) with $|Z| > 5$ is considered an outlier worth inspection. RMSZ is the root-mean-square of all Z scores of the bond lengths (or angles).

Mol	Chain	Bond lengths		Bond angles	
		RMSZ	# Z >5	RMSZ	# Z >5
1	A	0.29	0/1937	0.56	0/2632
2	B	0.30	0/3045	0.62	0/4113
All	All	0.30	0/4982	0.59	0/6745

There are no bond length outliers.

There are no bond angle outliers.

There are no chirality outliers.

There are no planarity outliers.

5.2 Too-close contacts [i](#)

In the following table, the Non-H and H(model) columns list the number of non-hydrogen atoms and hydrogen atoms in the chain respectively. The H(added) column lists the number of hydrogen atoms added and optimized by MolProbity. The Clashes column lists the number of clashes within the asymmetric unit, whereas Symm-Clashes lists symmetry related clashes.

Mol	Chain	Non-H	H(model)	H(added)	Clashes	Symm-Clashes
1	A	1899	0	1899	32	0
2	B	2987	0	2965	64	0
3	A	1	0	0	0	0
4	A	21	0	9	0	0
5	B	15	0	7	0	0
6	A	212	0	0	4	0
6	B	389	0	0	13	0
All	All	5524	0	4880	87	0

The all-atom clashscore is defined as the number of clashes found per 1000 atoms (including hydrogen atoms). The all-atom clashscore for this structure is 9.

All (87) close contacts within the same asymmetric unit are listed below, sorted by their clash magnitude.

Atom-1	Atom-2	Interatomic distance (Å)	Clash overlap (Å)
1:A:58:LEU:HA	2:B:171:ASN:ND2	1.82	0.95
2:B:165:THR:HG23	2:B:167:LYS:HG2	1.46	0.94
2:B:87:LYS:HD2	2:B:114:GLN:HG3	1.59	0.84
2:B:34:ARG:HH21	2:B:34:ARG:HG2	1.47	0.80
1:A:194:HIS:ND1	1:A:195:HIS:N	2.29	0.78
2:B:279:TYR:HB3	2:B:286:MET:HE1	1.68	0.75
1:A:211:GLY:O	1:A:212:PHE:HB2	1.90	0.71
1:A:64:ILE:HD12	6:A:2065:HOH:O	1.89	0.71
1:A:58:LEU:HA	2:B:171:ASN:CG	2.11	0.70
1:A:240:ILE:HA	1:A:243:LYS:HE2	1.74	0.69
1:A:86:ALA:O	1:A:90:GLU:HG3	1.93	0.69
1:A:56:ASP:HB3	2:B:279:TYR:CE1	2.28	0.68
2:B:171:ASN:ND2	2:B:175:ARG:NH2	2.42	0.67
2:B:100:ARG:HD3	6:B:2135:HOH:O	1.96	0.66
1:A:137:ALA:HB3	1:A:138:PRO:HD3	1.78	0.65
2:B:145:ASN:HD22	2:B:148:ARG:HH21	1.45	0.65
1:A:65:GLN:O	1:A:69:LEU:HD13	1.97	0.64
2:B:34:ARG:HG2	2:B:34:ARG:NH2	2.13	0.63
1:A:242:GLU:HA	1:A:245:LEU:HD13	1.82	0.62
1:A:60:ASP:O	2:B:175:ARG:NH2	2.34	0.60
2:B:100:ARG:CG	6:B:2135:HOH:O	2.48	0.60
1:A:247:SER:HB2	6:A:2192:HOH:O	2.03	0.58
2:B:100:ARG:CD	6:B:2135:HOH:O	2.50	0.58
1:A:31:GLU:HG2	6:A:2032:HOH:O	2.03	0.57
2:B:163:SER:O	2:B:165:THR:N	2.37	0.57
1:A:56:ASP:OD1	2:B:167:LYS:HD2	2.05	0.56
1:A:69:LEU:HD21	2:B:162:GLY:HA2	1.87	0.56
1:A:163:LEU:HD21	1:A:196:LEU:HD22	1.88	0.56
2:B:162:GLY:C	2:B:164:ALA:H	2.10	0.55
1:A:56:ASP:OD2	2:B:294:ILE:HB	2.07	0.55
2:B:165:THR:CG2	2:B:167:LYS:HG2	2.29	0.55
1:A:57:PRO:O	2:B:171:ASN:ND2	2.40	0.55
2:B:134:MET:HE3	2:B:146:VAL:HG22	1.87	0.54
1:A:117:ARG:HA	1:A:120:GLN:HG2	1.90	0.54
2:B:297:SER:HB2	6:B:2311:HOH:O	2.08	0.53
1:A:61:GLY:O	1:A:65:GLN:HG3	2.09	0.52
2:B:100:ARG:HG3	6:B:2137:HOH:O	2.10	0.51
1:A:12:ASN:O	1:A:15:ARG:HD2	2.10	0.51
2:B:145:ASN:ND2	2:B:148:ARG:HH21	2.08	0.51
1:A:194:HIS:N	1:A:197:ILE:HG13	2.27	0.50

Continued on next page...

Continued from previous page...

Atom-1	Atom-2	Interatomic distance (Å)	Clash overlap (Å)
2:B:16:TYR:O	2:B:281:GLY:HA2	2.11	0.50
2:B:163:SER:OG	2:B:165:THR:HG22	2.12	0.50
2:B:37:LYS:HG2	6:B:2063:HOH:O	2.12	0.49
2:B:145:ASN:ND2	2:B:148:ARG:NH2	2.62	0.48
2:B:159:VAL:HG23	2:B:159:VAL:O	2.13	0.47
1:A:56:ASP:HB3	2:B:279:TYR:CZ	2.50	0.47
2:B:121:LEU:HD12	2:B:122:ALA:N	2.30	0.47
1:A:11:LEU:CD1	1:A:18:ALA:HB2	2.45	0.47
2:B:63:GLN:HG2	6:B:2347:HOH:O	2.15	0.47
1:A:194:HIS:CG	1:A:195:HIS:H	2.27	0.46
2:B:285:PRO:HG2	2:B:309:VAL:HG12	1.97	0.46
2:B:297:SER:CB	6:B:2311:HOH:O	2.62	0.46
1:A:108:ASN:HA	6:A:2097:HOH:O	2.16	0.46
2:B:134:MET:HE3	2:B:139:VAL:HG22	1.98	0.45
2:B:222:ARG:NH2	6:B:2236:HOH:O	2.48	0.45
2:B:34:ARG:HG3	2:B:100:ARG:HH21	1.82	0.45
2:B:171:ASN:HD21	2:B:175:ARG:NH2	2.11	0.45
2:B:115:HIS:CE1	2:B:189:GLY:HA2	2.52	0.44
2:B:134:MET:CE	2:B:146:VAL:HG22	2.47	0.44
2:B:100:ARG:HG2	6:B:2135:HOH:O	2.15	0.44
2:B:171:ASN:CG	2:B:175:ARG:CZ	2.86	0.44
2:B:135:GLY:HA3	2:B:164:ALA:O	2.18	0.44
2:B:159:VAL:CG2	2:B:159:VAL:O	2.66	0.44
2:B:171:ASN:ND2	2:B:175:ARG:CZ	2.80	0.44
1:A:170:GLY:O	1:A:171:ARG:HD3	2.18	0.44
2:B:182:GLU:HG3	6:B:2205:HOH:O	2.17	0.43
2:B:301:SER:OG	2:B:350:GLU:HG3	2.17	0.43
2:B:34:ARG:CG	2:B:100:ARG:HH21	2.32	0.43
2:B:286:MET:HB3	2:B:286:MET:HE3	1.92	0.43
2:B:109:GLU:HA	2:B:133:TYR:O	2.19	0.43
2:B:279:TYR:CG	2:B:280:PHE:N	2.86	0.43
1:A:194:HIS:CG	1:A:195:HIS:N	2.84	0.42
2:B:86:HIS:CE1	2:B:236:ASN:HB3	2.54	0.42
2:B:30:GLU:HG2	6:B:2060:HOH:O	2.19	0.42
2:B:341:ARG:HG3	2:B:341:ARG:HH11	1.84	0.42
2:B:279:TYR:CD1	2:B:280:PHE:N	2.87	0.42
1:A:22:PHE:C	1:A:22:PHE:CD1	2.92	0.41
2:B:287:MET:HB3	2:B:295:GLU:HB3	2.02	0.41
2:B:306:PHE:HB2	6:B:2309:HOH:O	2.19	0.41
2:B:134:MET:HB3	2:B:134:MET:HE2	1.86	0.41
1:A:153:ILE:HG23	1:A:177:LEU:HG	2.02	0.41

Continued on next page...

Continued from previous page...

Atom-1	Atom-2	Interatomic distance (Å)	Clash overlap (Å)
2:B:105:GLU:HG2	2:B:129:LYS:HB2	2.03	0.41
2:B:166:LEU:C	2:B:166:LEU:HD12	2.41	0.40
1:A:36:ILE:HG23	1:A:255:LEU:HD13	2.03	0.40
2:B:165:THR:OG1	2:B:166:LEU:N	2.55	0.40
2:B:285:PRO:HG2	2:B:309:VAL:CG1	2.51	0.40
2:B:327:ILE:HG23	2:B:331:GLU:HB2	2.02	0.40

There are no symmetry-related clashes.

5.3 Torsion angles [i](#)

5.3.1 Protein backbone [i](#)

In the following table, the Percentiles column shows the percent Ramachandran outliers of the chain as a percentile score with respect to all X-ray entries followed by that with respect to entries of similar resolution.

The Analysed column shows the number of residues for which the backbone conformation was analysed, and the total number of residues.

Mol	Chain	Analysed	Favoured	Allowed	Outliers	Percentiles	
1	A	248/268 (92%)	241 (97%)	6 (2%)	1 (0%)	34	13
2	B	393/396 (99%)	384 (98%)	8 (2%)	1 (0%)	41	18
All	All	641/664 (96%)	625 (98%)	14 (2%)	2 (0%)	41	18

All (2) Ramachandran outliers are listed below:

Mol	Chain	Res	Type
2	B	164	ALA
1	A	212	PHE

5.3.2 Protein sidechains [i](#)

In the following table, the Percentiles column shows the percent sidechain outliers of the chain as a percentile score with respect to all X-ray entries followed by that with respect to entries of similar resolution.

The Analysed column shows the number of residues for which the sidechain conformation was analysed, and the total number of residues.

Mol	Chain	Analysed	Rotameric	Outliers	Percentiles	
1	A	196/208 (94%)	192 (98%)	4 (2%)	55	25
2	B	308/310 (99%)	304 (99%)	4 (1%)	69	44
All	All	504/518 (97%)	496 (98%)	8 (2%)	62	36

All (8) residues with a non-rotameric sidechain are listed below:

Mol	Chain	Res	Type
1	A	15	ARG
1	A	171	ARG
1	A	194	HIS
1	A	245	LEU
2	B	143	SER
2	B	165	THR
2	B	166	LEU
2	B	170	CYS

Some sidechains can be flipped to improve hydrogen bonding and reduce clashes. All (10) such sidechains are listed below:

Mol	Chain	Res	Type
1	A	10	GLN
1	A	65	GLN
1	A	68	ASN
1	A	250	GLN
2	B	26	ASN
2	B	44	GLN
2	B	64	ASN
2	B	145	ASN
2	B	317	ASN
2	B	375	ASN

5.3.3 RNA [i](#)

There are no RNA molecules in this entry.

5.4 Non-standard residues in protein, DNA, RNA chains [i](#)

There are no non-standard protein/DNA/RNA residues in this entry.

5.5 Carbohydrates [i](#)

There are no carbohydrates in this entry.

5.6 Ligand geometry [i](#)

Of 3 ligands modelled in this entry, 1 is monoatomic - leaving 2 for Mogul analysis.

In the following table, the Counts columns list the number of bonds (or angles) for which Mogul statistics could be retrieved, the number of bonds (or angles) that are observed in the model and the number of bonds (or angles) that are defined in the Chemical Component Dictionary. The Link column lists molecule types, if any, to which the group is linked. The Z score for a bond length (or angle) is the number of standard deviations the observed value is removed from the expected value. A bond length (or angle) with $|Z| > 2$ is considered an outlier worth inspection. RMSZ is the root-mean-square of all Z scores of the bond lengths (or angles).

Mol	Type	Chain	Res	Link	Bond lengths			Bond angles		
					Counts	RMSZ	# Z > 2	Counts	RMSZ	# Z > 2
4	F6F	A	1268	-	21,21,21	2.14	7 (33%)	29,30,30	1.97	7 (24%)
5	PLP	B	1396	2	15,15,16	1.57	2 (13%)	20,22,23	1.49	4 (20%)

In the following table, the Chirals column lists the number of chiral outliers, the number of chiral centers analysed, the number of these observed in the model and the number defined in the Chemical Component Dictionary. Similar counts are reported in the Torsion and Rings columns. '-' means no outliers of that kind were identified.

Mol	Type	Chain	Res	Link	Chirals	Torsions	Rings
4	F6F	A	1268	-	-	6/17/17/17	0/1/1/1
5	PLP	B	1396	2	-	0/6/6/8	0/1/1/1

All (9) bond length outliers are listed below:

Mol	Chain	Res	Type	Atoms	Z	Observed(Å)	Ideal(Å)
4	A	1268	F6F	C6-C5	4.22	1.46	1.38
4	A	1268	F6F	C3-C4	3.75	1.45	1.39
4	A	1268	F6F	C5-C4	3.73	1.45	1.39
4	A	1268	F6F	C6-C1	3.71	1.46	1.38
5	B	1396	PLP	C3-C2	-3.08	1.37	1.40
4	A	1268	F6F	C2-C1	2.81	1.44	1.38
4	A	1268	F6F	C3-C2	2.78	1.43	1.38
4	A	1268	F6F	O17-C16	-2.31	1.35	1.44
5	B	1396	PLP	C4A-C4	2.17	1.56	1.51

All (11) bond angle outliers are listed below:

Mol	Chain	Res	Type	Atoms	Z	Observed(°)	Ideal(°)
4	A	1268	F6F	C4-C12-N13	-6.01	104.20	117.09
5	B	1396	PLP	O4P-C5A-C5	4.53	117.99	109.35
4	A	1268	F6F	C15-N13-C12	-4.07	112.80	122.08
4	A	1268	F6F	O14-C12-N13	-3.85	114.94	122.61
4	A	1268	F6F	P18-O17-C16	-3.74	108.00	118.30
4	A	1268	F6F	O14-C12-C4	-3.16	115.30	120.94
4	A	1268	F6F	O21-P18-O20	2.58	120.80	110.68
4	A	1268	F6F	C16-C15-N13	2.41	117.55	111.83
5	B	1396	PLP	O4P-P-O1P	-2.35	99.89	106.47
5	B	1396	PLP	C6-C5-C4	2.17	119.86	118.16
5	B	1396	PLP	C5-C6-N1	-2.04	120.43	123.82

There are no chirality outliers.

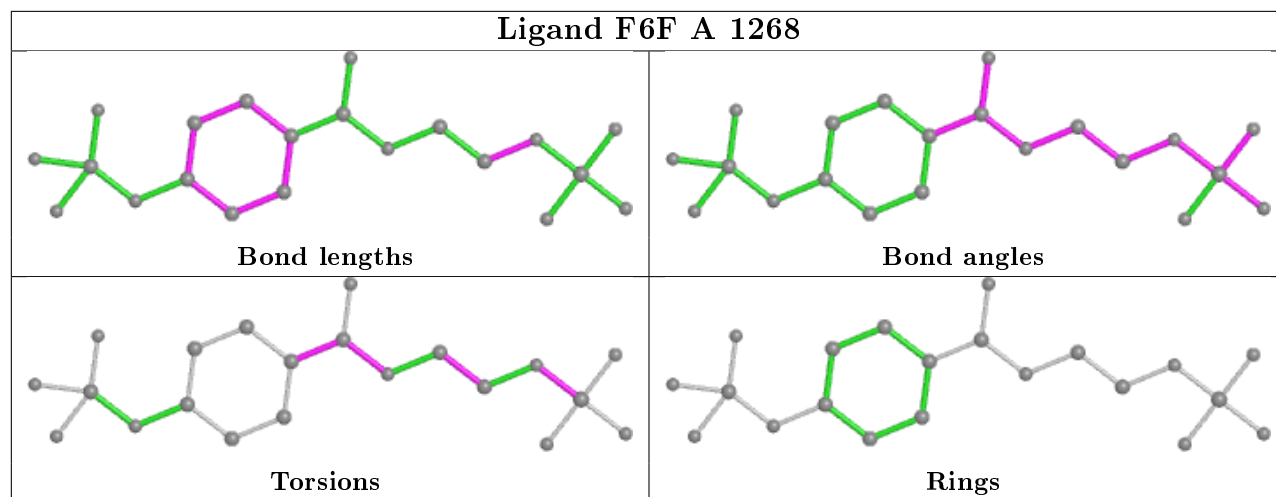
All (6) torsion outliers are listed below:

Mol	Chain	Res	Type	Atoms
4	A	1268	F6F	N13-C15-C16-O17
4	A	1268	F6F	C16-O17-P18-O20
4	A	1268	F6F	O14-C12-N13-C15
4	A	1268	F6F	N13-C12-C4-C5
4	A	1268	F6F	N13-C12-C4-C3
4	A	1268	F6F	C16-O17-P18-O19

There are no ring outliers.

No monomer is involved in short contacts.

The following is a two-dimensional graphical depiction of Mogul quality analysis of bond lengths, bond angles, torsion angles, and ring geometry for all instances of the Ligand of Interest. In addition, ligands with molecular weight > 250 and outliers as shown on the validation Tables will also be included. For torsion angles, if less than 5% of the Mogul distribution of torsion angles is within 10 degrees of the torsion angle in question, then that torsion angle is considered an outlier. Any bond that is central to one or more torsion angles identified as an outlier by Mogul will be highlighted in the graph. For rings, the root-mean-square deviation (RMSD) between the ring in question and similar rings identified by Mogul is calculated over all ring torsion angles. If the average RMSD is greater than 60 degrees and the minimal RMSD between the ring in question and any Mogul-identified rings is also greater than 60 degrees, then that ring is considered an outlier. The outliers are highlighted in purple. The color gray indicates Mogul did not find sufficient equivalents in the CSD to analyse the geometry.



5.7 Other polymers [i](#)

There are no such residues in this entry.

5.8 Polymer linkage issues [i](#)

There are no chain breaks in this entry.

6 Fit of model and data

6.1 Protein, DNA and RNA chains

In the following table, the column labelled ‘#RSRZ> 2’ contains the number (and percentage) of RSRZ outliers, followed by percent RSRZ outliers for the chain as percentile scores relative to all X-ray entries and entries of similar resolution. The OWAB column contains the minimum, median, 95th percentile and maximum values of the occupancy-weighted average B-factor per residue. The column labelled ‘Q< 0.9’ lists the number of (and percentage) of residues with an average occupancy less than 0.9.

Mol	Chain	Analysed	<RSRZ>	#RSRZ>2	OWAB(Å ²)	Q<0.9
1	A	252/268 (94%)	0.55	29 (11%) 4 4	10, 19, 29, 41	0
2	B	395/396 (99%)	0.46	41 (10%) 6 6	7, 13, 31, 53	0
All	All	647/664 (97%)	0.49	70 (10%) 5 5	7, 15, 30, 53	0

All (70) RSRZ outliers are listed below:

Mol	Chain	Res	Type	RSRZ
2	B	396	GLU	7.5
1	A	195	HIS	6.9
2	B	163	SER	6.7
2	B	2	THR	6.4
2	B	171	ASN	6.2
2	B	160	HIS	6.1
1	A	58	LEU	5.7
2	B	141	ARG	5.3
2	B	164	ALA	5.3
2	B	161	SER	5.0
2	B	162	GLY	5.0
2	B	395	GLY	4.9
2	B	137	LYS	4.9
2	B	140	GLU	4.9
1	A	15	ARG	4.6
2	B	166	LEU	4.5
2	B	385	PHE	4.4
2	B	112	ALA	4.0
2	B	136	ALA	4.0
2	B	165	THR	4.0
2	B	279	TYR	4.0
1	A	194	HIS	4.0
1	A	239	LYS	3.8
1	A	64	ILE	3.8

Continued on next page...

Continued from previous page...

Mol	Chain	Res	Type	RSRZ
2	B	296	GLU	3.7
1	A	196	LEU	3.6
1	A	178	SER	3.6
2	B	63	GLN	3.5
1	A	247	SER	3.5
1	A	250	GLN	3.5
1	A	157	ASN	3.5
2	B	306	PHE	3.4
2	B	167	LYS	3.3
2	B	169	ALA	3.3
2	B	170	CYS	3.2
1	A	198	GLU	3.2
1	A	60	ASP	3.1
2	B	341	ARG	3.0
2	B	179	GLY	3.0
1	A	249	LYS	3.0
1	A	204	HIS	2.9
1	A	156	PRO	2.9
1	A	243	LYS	2.9
1	A	2	GLU	2.9
2	B	175	ARG	2.9
2	B	37	LYS	2.7
1	A	57	PRO	2.6
2	B	182	GLU	2.6
2	B	392	LYS	2.6
2	B	158	PRO	2.6
1	A	13	ASP	2.6
2	B	297	SER	2.6
2	B	159	VAL	2.5
1	A	61	GLY	2.4
2	B	280	PHE	2.3
1	A	14	ARG	2.3
1	A	31	GLU	2.3
1	A	212	PHE	2.3
2	B	305	ASP	2.2
2	B	135	GLY	2.2
1	A	241	ILE	2.2
2	B	384	ILE	2.2
2	B	139	VAL	2.1
1	A	56	ASP	2.1
1	A	65	GLN	2.1
2	B	307	PRO	2.1

Continued on next page...

Continued from previous page...

Mol	Chain	Res	Type	RSRZ
2	B	388	HIS	2.1
1	A	73	ALA	2.1
1	A	213	GLY	2.0
2	B	295	GLU	2.0

6.2 Non-standard residues in protein, DNA, RNA chains [i](#)

There are no non-standard protein/DNA/RNA residues in this entry.

6.3 Carbohydrates [i](#)

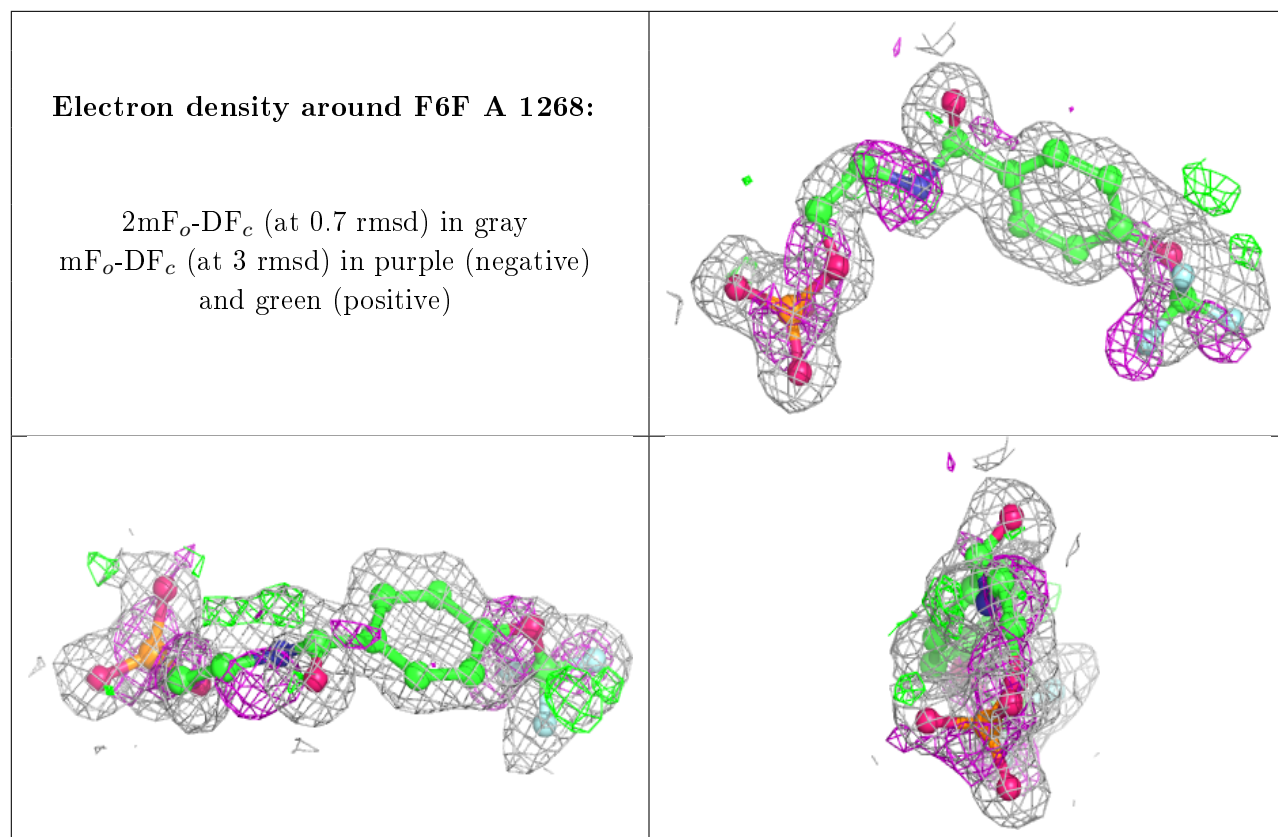
There are no carbohydrates in this entry.

6.4 Ligands [i](#)

In the following table, the Atoms column lists the number of modelled atoms in the group and the number defined in the chemical component dictionary. The B-factors column lists the minimum, median, 95th percentile and maximum values of B factors of atoms in the group. The column labelled 'Q< 0.9' lists the number of atoms with occupancy less than 0.9.

Mol	Type	Chain	Res	Atoms	RSCC	RSR	B-factors(Å ²)	Q<0.9
4	F6F	A	1268	21/21	0.85	0.17	21,24,33,34	0
3	NA	A	1263	1/1	0.97	0.08	11,11,11,11	0
5	PLP	B	1396	15/16	0.98	0.06	6,9,11,12	0

The following is a graphical depiction of the model fit to experimental electron density of all instances of the Ligand of Interest. In addition, ligands with molecular weight > 250 and outliers as shown on the geometry validation Tables will also be included. Each fit is shown from different orientation to approximate a three-dimensional view.



6.5 Other polymers [i](#)

There are no such residues in this entry.