



# Full wwPDB X-ray Structure Validation Report ⓘ

Aug 7, 2020 – 12:32 PM BST

PDB ID : 2C6C  
Title : membrane-bound glutamate carboxypeptidase II (GCPII) in complex with GPI-18431 (S)-2-(4-iodobenzylphosphonomethyl)-pentanedioic acid  
Authors : Mesters, J.R.; Barinka, C.; Li, W.; Tsukamoto, T.; Majer, P.; Slusher, B.S.; Konvalinka, J.; Hilgenfeld, R.  
Deposited on : 2005-11-09  
Resolution : 2.00 Å(reported)

This is a Full wwPDB X-ray Structure Validation Report for a publicly released PDB entry.

We welcome your comments at [validation@mail.wwpdb.org](mailto:validation@mail.wwpdb.org)

A user guide is available at

<https://www.wwpdb.org/validation/2017/XrayValidationReportHelp>

with specific help available everywhere you see the ⓘ symbol.

---

The following versions of software and data (see [references ⓘ](#)) were used in the production of this report:

MolProbity : 4.02b-467  
Mogul : 1.8.5 (274361), CSD as541be (2020)  
Xtriage (Phenix) : 1.13  
EDS : 2.13.1  
buster-report : 1.1.7 (2018)  
Percentile statistics : 20191225.v01 (using entries in the PDB archive December 25th 2019)  
Refmac : 5.8.0158  
CCP4 : 7.0.044 (Gargrove)  
Ideal geometry (proteins) : Engh & Huber (2001)  
Ideal geometry (DNA, RNA) : Parkinson et al. (1996)  
Validation Pipeline (wwPDB-VP) : 2.13.1

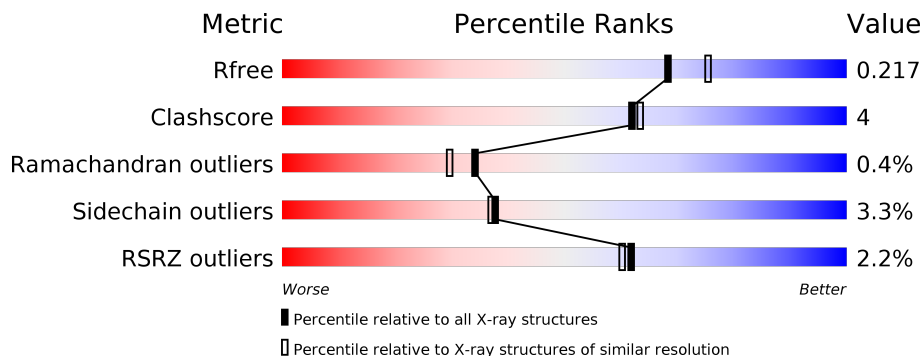
# 1 Overall quality at a glance

The following experimental techniques were used to determine the structure:

*X-RAY DIFFRACTION*

The reported resolution of this entry is 2.00 Å.

Percentile scores (ranging between 0-100) for global validation metrics of the entry are shown in the following graphic. The table shows the number of entries on which the scores are based.



Metric	Whole archive (#Entries)	Similar resolution (#Entries, resolution range(Å))
$R_{free}$	130704	8085 (2.00-2.00)
Clashscore	141614	9178 (2.00-2.00)
Ramachandran outliers	138981	9054 (2.00-2.00)
Sidechain outliers	138945	9053 (2.00-2.00)
RSRZ outliers	127900	7900 (2.00-2.00)

The table below summarises the geometric issues observed across the polymeric chains and their fit to the electron density. The red, orange, yellow and green segments on the lower bar indicate the fraction of residues that contain outliers for  $\geq 3$ , 2, 1 and 0 types of geometric quality criteria respectively. A grey segment represents the fraction of residues that are not modelled. The numeric value for each fraction is indicated below the corresponding segment, with a dot representing fractions  $\leq 5\%$ . The upper red bar (where present) indicates the fraction of residues that have poor fit to the electron density. The numeric value is given above the bar.

Mol	Chain	Length	Quality of chain
1	A	707	 2% 84% 10% . . .
2	B	2	 100%
2	C	2	 50% 50%
3	D	4	 50% 50%

The following table lists non-polymeric compounds, carbohydrate monomers and non-standard residues in protein, DNA, RNA chains that are outliers for geometric or electron-density-fit crite-

ria:

<b>Mol</b>	<b>Type</b>	<b>Chain</b>	<b>Res</b>	<b>Chirality</b>	<b>Geometry</b>	<b>Clashes</b>	<b>Electron density</b>
3	MAN	D	3	X	-	-	-

## 2 Entry composition [i](#)

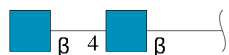
There are 9 unique types of molecules in this entry. The entry contains 5703 atoms, of which 0 are hydrogens and 0 are deuteriums.

In the tables below, the ZeroOcc column contains the number of atoms modelled with zero occupancy, the AltConf column contains the number of residues with at least one atom in alternate conformation and the Trace column contains the number of residues modelled with at most 2 atoms.

- Molecule 1 is a protein called GLUTAMATE CARBOXYPEPTIDASE II.

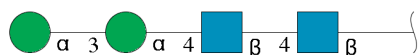
Mol	Chain	Residues	Atoms					ZeroOcc	AltConf	Trace
			Total	C	N	O	S			
1	A	682	5330	3434	886	993	17	0	0	0

- Molecule 2 is an oligosaccharide called 2-acetamido-2-deoxy-beta-D-glucopyranose-(1-4)-2-acetamido-2-deoxy-beta-D-glucopyranose.



Mol	Chain	Residues	Atoms				ZeroOcc	AltConf	Trace
			Total	C	N	O			
2	B	2	28	16	2	10	0	0	0
2	C	2	28	16	2	10	0	0	0

- Molecule 3 is an oligosaccharide called alpha-D-mannopyranose-(1-3)-alpha-D-mannopyranose-(1-4)-2-acetamido-2-deoxy-beta-D-glucopyranose-(1-4)-2-acetamido-2-deoxy-beta-D-glucopyranose.



Mol	Chain	Residues	Atoms				ZeroOcc	AltConf	Trace
			Total	C	N	O			
3	D	4	50	28	2	20	0	0	0

- Molecule 4 is ZINC ION (three-letter code: ZN) (formula: Zn).

Mol	Chain	Residues	Atoms		ZeroOcc	AltConf
4	A	2	Total	Zn	0	0
			2	2		

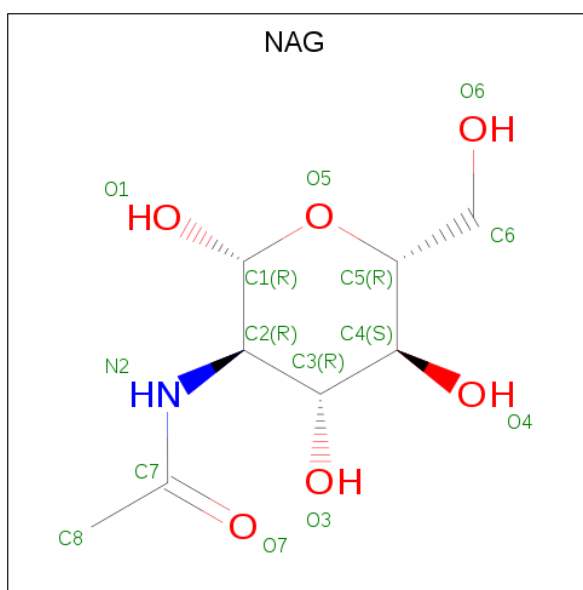
- Molecule 5 is CALCIUM ION (three-letter code: CA) (formula: Ca).

Mol	Chain	Residues	Atoms		ZeroOcc	AltConf
5	A	1	Total	Ca	0	0
			1	1		

- Molecule 6 is CHLORIDE ION (three-letter code: CL) (formula: Cl).

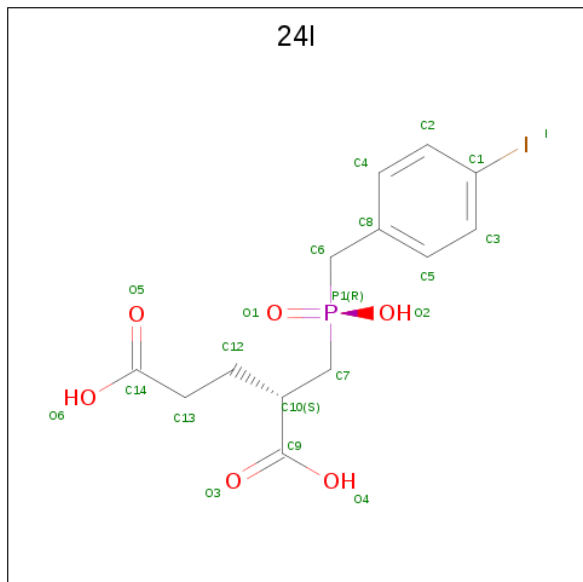
Mol	Chain	Residues	Atoms		ZeroOcc	AltConf
6	A	1	Total	Cl	0	0
			1	1		

- Molecule 7 is 2-acetamido-2-deoxy-beta-D-glucopyranose (three-letter code: NAG) (formula: C<sub>8</sub>H<sub>15</sub>NO<sub>6</sub>).



Mol	Chain	Residues	Atoms				ZeroOcc	AltConf
7	A	1	Total	C	N	O	0	0
			14	8	1	5		
7	A	1	Total	C	N	O	0	0
			14	8	1	5		
7	A	1	Total	C	N	O	0	0
			14	8	1	5		
7	A	1	Total	C	N	O	0	0
			14	8	1	5		

- Molecule 8 is (2S)-2-2-[[[HYDROXY(4-IODOBENZYL)PHOSPHORYL]METHYL]PENTANEDIOIC ACID (three-letter code: 24I) (formula: C<sub>13</sub>H<sub>16</sub>IO<sub>6</sub>P).



Mol	Chain	Residues	Atoms					ZeroOcc	AltConf
8	A	1	Total	C	I	O	P	0	0
			21	13	1	6	1		

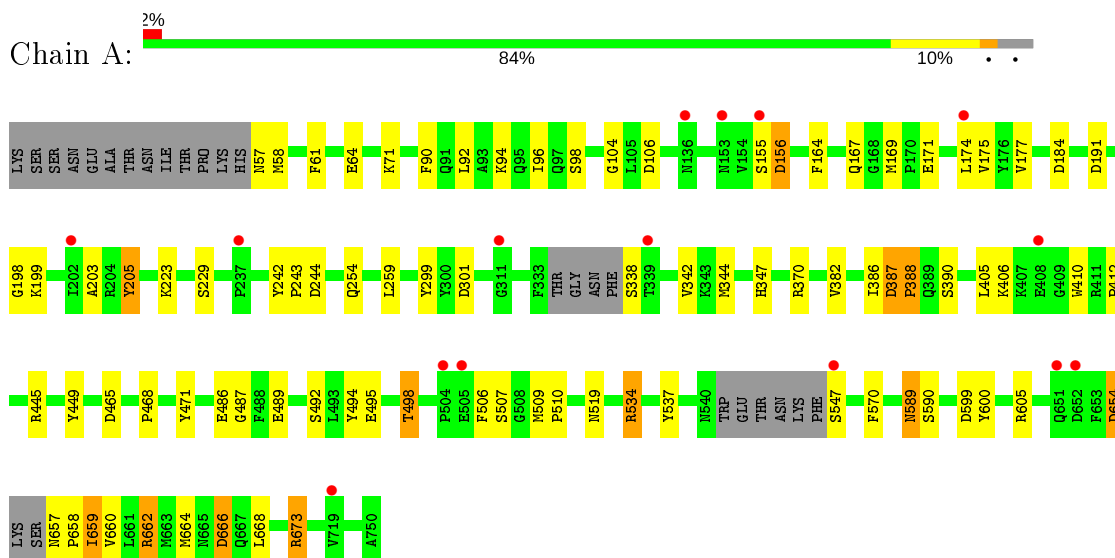
- Molecule 9 is water.

Mol	Chain	Residues	Atoms		ZeroOcc	AltConf
9	A	186	Total	O	0	0
			186	186		

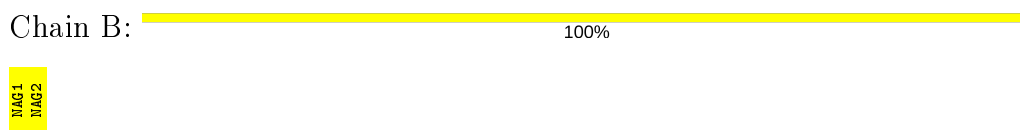
### 3 Residue-property plots [i](#)

These plots are drawn for all protein, RNA, DNA and oligosaccharide chains in the entry. The first graphic for a chain summarises the proportions of the various outlier classes displayed in the second graphic. The second graphic shows the sequence view annotated by issues in geometry and electron density. Residues are color-coded according to the number of geometric quality criteria for which they contain at least one outlier: green = 0, yellow = 1, orange = 2 and red = 3 or more. A red dot above a residue indicates a poor fit to the electron density ( $RSRZ > 2$ ). Stretches of 2 or more consecutive residues without any outlier are shown as a green connector. Residues present in the sample, but not in the model, are shown in grey.

- Molecule 1: GLUTAMATE CARBOXYPEPTIDASE II



- Molecule 2: 2-acetamido-2-deoxy-beta-D-glucopyranose-(1-4)-2-acetamido-2-deoxy-beta-D-glucopyranose



- Molecule 2: 2-acetamido-2-deoxy-beta-D-glucopyranose-(1-4)-2-acetamido-2-deoxy-beta-D-glucopyranose



- Molecule 3: alpha-D-mannopyranose-(1-3)-alpha-D-mannopyranose-(1-4)-2-acetamido-2-deoxy-beta-D-glucopyranose-(1-4)-2-acetamido-2-deoxy-beta-D-glucopyranose







## 4 Data and refinement statistics

Property	Value	Source
Space group	I 2 2 2	Depositor
Cell constants a, b, c, $\alpha$ , $\beta$ , $\gamma$	103.13Å 131.19Å 161.22Å 90.00° 90.00° 90.00°	Depositor
Resolution (Å)	25.00 – 2.00 24.87 – 2.00	Depositor EDS
% Data completeness (in resolution range)	94.2 (25.00-2.00) 94.3 (24.87-2.00)	Depositor EDS
$R_{merge}$	0.07	Depositor
$R_{sym}$	(Not available)	Depositor
$\langle I/\sigma(I) \rangle$ <sup>1</sup>	3.01 (at 1.99Å)	Xtrriage
Refinement program	REFMAC 5.1.24	Depositor
R, $R_{free}$	0.190 , 0.225 0.198 , 0.217	Depositor DCC
$R_{free}$ test set	1022 reflections (1.47%)	wwPDB-VP
Wilson B-factor (Å <sup>2</sup> )	30.9	Xtrriage
Anisotropy	0.028	Xtrriage
Bulk solvent $k_{sol}$ (e/Å <sup>3</sup> ), $B_{sol}$ (Å <sup>2</sup> )	0.34 , 60.9	EDS
L-test for twinning <sup>2</sup>	$\langle  L  \rangle = 0.50$ , $\langle L^2 \rangle = 0.33$	Xtrriage
Estimated twinning fraction	No twinning to report.	Xtrriage
$F_o, F_c$ correlation	0.96	EDS
Total number of atoms	5703	wwPDB-VP
Average B, all atoms (Å <sup>2</sup> )	35.0	wwPDB-VP

Xtrriage's analysis on translational NCS is as follows: *The largest off-origin peak in the Patterson function is 4.09% of the height of the origin peak. No significant pseudotranslation is detected.*

<sup>1</sup>Intensities estimated from amplitudes.

<sup>2</sup>Theoretical values of  $\langle |L| \rangle$ ,  $\langle L^2 \rangle$  for acentric reflections are 0.5, 0.333 respectively for untwinned datasets, and 0.375, 0.2 for perfectly twinned datasets.

## 5 Model quality i

### 5.1 Standard geometry i

Bond lengths and bond angles in the following residue types are not validated in this section: ZN, NAG, CL, CA, 24I, MAN

The Z score for a bond length (or angle) is the number of standard deviations the observed value is removed from the expected value. A bond length (or angle) with  $|Z| > 5$  is considered an outlier worth inspection. RMSZ is the root-mean-square of all Z scores of the bond lengths (or angles).

Mol	Chain	Bond lengths		Bond angles	
		RMSZ	# Z  >5	RMSZ	# Z  >5
1	A	1.08	3/5478 (0.1%)	0.98	16/7438 (0.2%)

All (3) bond length outliers are listed below:

Mol	Chain	Res	Type	Atoms	Z	Observed(Å)	Ideal(Å)
1	A	590	SER	CA-CB	-6.60	1.43	1.52
1	A	449	TYR	CE2-CZ	-5.99	1.30	1.38
1	A	445	ARG	NE-CZ	-5.12	1.26	1.33

All (16) bond angle outliers are listed below:

Mol	Chain	Res	Type	Atoms	Z	Observed(°)	Ideal(°)
1	A	662	ARG	NE-CZ-NH1	11.17	125.89	120.30
1	A	184	ASP	CB-CG-OD2	9.16	126.55	118.30
1	A	666	ASP	CB-CG-OD2	8.23	125.71	118.30
1	A	301	ASP	CB-CG-OD2	7.68	125.21	118.30
1	A	387	ASP	CB-CG-OD2	7.61	125.15	118.30
1	A	673	ARG	NE-CZ-NH1	7.11	123.85	120.30
1	A	244	ASP	CB-CG-OD2	6.92	124.53	118.30
1	A	465	ASP	CB-CG-OD1	6.78	124.40	118.30
1	A	662	ARG	NE-CZ-NH2	-6.78	116.91	120.30
1	A	106	ASP	CB-CG-OD2	6.31	123.98	118.30
1	A	599	ASP	CB-CG-OD2	6.26	123.93	118.30
1	A	156	ASP	CB-CG-OD2	5.97	123.67	118.30
1	A	534	ARG	NE-CZ-NH2	-5.76	117.42	120.30
1	A	191	ASP	CB-CG-OD2	5.53	123.28	118.30
1	A	370	ARG	NE-CZ-NH1	5.33	122.97	120.30
1	A	659	ILE	N-CA-C	-5.02	97.44	111.00

There are no chirality outliers.

There are no planarity outliers.

## 5.2 Too-close contacts

In the following table, the Non-H and H(model) columns list the number of non-hydrogen atoms and hydrogen atoms in the chain respectively. The H(added) column lists the number of hydrogen atoms added and optimized by MolProbity. The Clashes column lists the number of clashes within the asymmetric unit, whereas Symm-Clashes lists symmetry related clashes.

Mol	Chain	Non-H	H(model)	H(added)	Clashes	Symm-Clashes
1	A	5330	0	5061	45	0
2	B	28	0	25	0	0
2	C	28	0	25	0	0
3	D	50	0	43	1	0
4	A	2	0	0	0	0
5	A	1	0	0	0	0
6	A	1	0	0	0	0
7	A	56	0	52	1	0
8	A	21	0	13	0	0
9	A	186	0	0	2	0
All	All	5703	0	5219	47	0

The all-atom clashscore is defined as the number of clashes found per 1000 atoms (including hydrogen atoms). The all-atom clashscore for this structure is 4.

All (47) close contacts within the same asymmetric unit are listed below, sorted by their clash magnitude.

Atom-1	Atom-2	Interatomic distance (Å)	Clash overlap (Å)
1:A:657:ASN:ND2	1:A:660:VAL:HG23	1.49	1.26
1:A:657:ASN:HD22	1:A:660:VAL:CG2	1.68	1.07
1:A:657:ASN:HD22	1:A:660:VAL:HG23	0.84	0.98
1:A:660:VAL:O	1:A:664:MET:HG2	1.67	0.94
1:A:494:TYR:O	1:A:498:THR:HG23	1.72	0.88
1:A:494:TYR:O	1:A:498:THR:CG2	2.24	0.85
1:A:666:ASP:OD2	9:A:2140:HOH:O	1.99	0.80
1:A:412:PRO:HA	1:A:589:ASN:OD1	1.84	0.77
1:A:654:ASP:O	1:A:657:ASN:N	2.25	0.70
1:A:509:MET:HB2	1:A:510:PRO:HD2	1.79	0.64
3:D:1:NAG:H62	3:D:2:NAG:H83	1.79	0.63
1:A:662:ARG:HD2	9:A:2140:HOH:O	1.98	0.63
1:A:71:LYS:HG3	1:A:570:PHE:CE2	2.34	0.62
1:A:171:GLU:HA	1:A:342:VAL:O	1.98	0.62

*Continued on next page...*

*Continued from previous page...*

Atom-1	Atom-2	Interatomic distance (Å)	Clash overlap (Å)
1:A:509:MET:HB2	1:A:510:PRO:CD	2.30	0.62
1:A:169:MET:HA	1:A:344:MET:O	2.03	0.59
1:A:494:TYR:O	1:A:498:THR:HG22	2.01	0.59
1:A:654:ASP:N	1:A:654:ASP:OD1	2.37	0.58
1:A:155:SER:O	1:A:156:ASP:HB2	2.04	0.56
1:A:205:TYR:CE1	1:A:254:GLN:HB3	2.42	0.54
1:A:494:TYR:CE2	1:A:498:THR:HG21	2.45	0.52
1:A:487:GLY:N	1:A:489:GLU:OE2	2.40	0.52
1:A:242:TYR:CG	1:A:243:PRO:HA	2.45	0.51
1:A:657:ASN:ND2	1:A:660:VAL:CG2	2.42	0.51
1:A:657:ASN:ND2	1:A:660:VAL:H	2.10	0.49
1:A:492:SER:OG	1:A:495:GLU:HG3	2.13	0.48
1:A:386:ILE:O	1:A:390:SER:HB3	2.13	0.48
1:A:175:VAL:HG23	1:A:199:LYS:HG2	1.95	0.47
1:A:104:GLY:O	1:A:406:LYS:HD2	2.14	0.47
1:A:657:ASN:OD1	1:A:658:PRO:HD2	2.15	0.46
1:A:659:ILE:HD13	1:A:659:ILE:HA	1.70	0.45
1:A:164:PHE:CG	1:A:259:LEU:HD21	2.50	0.45
1:A:177:VAL:CG2	1:A:203:ALA:HB2	2.48	0.44
1:A:198:GLY:O	1:A:223:LYS:HD3	2.16	0.44
1:A:405:LEU:N	1:A:405:LEU:HD23	2.33	0.44
1:A:167:GLN:HG2	1:A:347:HIS:HA	2.00	0.43
1:A:660:VAL:O	1:A:664:MET:CG	2.54	0.43
1:A:468:PRO:HA	1:A:471:TYR:CD1	2.54	0.43
1:A:64:GLU:O	1:A:64:GLU:HG3	2.19	0.43
1:A:509:MET:CB	1:A:510:PRO:CD	2.93	0.43
1:A:58:MET:O	1:A:61:PHE:HB3	2.20	0.42
1:A:92:LEU:O	1:A:96:ILE:HG12	2.20	0.41
1:A:90:PHE:CZ	1:A:94:LYS:CD	3.04	0.41
1:A:229:SER:O	1:A:299:TYR:HB3	2.21	0.41
7:A:1757:NAG:HO6	7:A:1757:NAG:HO3	1.64	0.40
1:A:387:ASP:HA	1:A:388:PRO:HA	1.89	0.40
1:A:406:LYS:HA	1:A:410:TRP:O	2.21	0.40

There are no symmetry-related clashes.

## 5.3 Torsion angles [i](#)

### 5.3.1 Protein backbone [i](#)

In the following table, the Percentiles column shows the percent Ramachandran outliers of the chain as a percentile score with respect to all X-ray entries followed by that with respect to entries of similar resolution.

The Analysed column shows the number of residues for which the backbone conformation was analysed, and the total number of residues.

Mol	Chain	Analysed	Favoured	Allowed	Outliers	Percentiles
1	A	674/707 (95%)	647 (96%)	24 (4%)	3 (0%)	34 30

All (3) Ramachandran outliers are listed below:

Mol	Chain	Res	Type
1	A	506	PHE
1	A	507	SER
1	A	382	VAL

### 5.3.2 Protein sidechains [i](#)

In the following table, the Percentiles column shows the percent sidechain outliers of the chain as a percentile score with respect to all X-ray entries followed by that with respect to entries of similar resolution.

The Analysed column shows the number of residues for which the sidechain conformation was analysed, and the total number of residues.

Mol	Chain	Analysed	Rotameric	Outliers	Percentiles
1	A	547/603 (91%)	529 (97%)	18 (3%)	38 37

All (18) residues with a non-rotameric sidechain are listed below:

Mol	Chain	Res	Type
1	A	57	ASN
1	A	98	SER
1	A	174	LEU
1	A	205	TYR
1	A	338	SER
1	A	388	PRO
1	A	486	GLU
1	A	498	THR

*Continued on next page...*

*Continued from previous page...*

Mol	Chain	Res	Type
1	A	519	ASN
1	A	534	ARG
1	A	537	TYR
1	A	547	SER
1	A	589	ASN
1	A	600	TYR
1	A	605	ARG
1	A	654	ASP
1	A	668	LEU
1	A	673	ARG

Some sidechains can be flipped to improve hydrogen bonding and reduce clashes. All (4) such sidechains are listed below:

Mol	Chain	Res	Type
1	A	91	GLN
1	A	136	ASN
1	A	303	GLN
1	A	657	ASN

### 5.3.3 RNA [i](#)

There are no RNA molecules in this entry.

## 5.4 Non-standard residues in protein, DNA, RNA chains [i](#)

There are no non-standard protein/DNA/RNA residues in this entry.

## 5.5 Carbohydrates [i](#)

8 monosaccharides are modelled in this entry.

In the following table, the Counts columns list the number of bonds (or angles) for which Mogul statistics could be retrieved, the number of bonds (or angles) that are observed in the model and the number of bonds (or angles) that are defined in the Chemical Component Dictionary. The Link column lists molecule types, if any, to which the group is linked. The Z score for a bond length (or angle) is the number of standard deviations the observed value is removed from the expected value. A bond length (or angle) with  $|Z| > 2$  is considered an outlier worth inspection. RMSZ is the root-mean-square of all Z scores of the bond lengths (or angles).

Mol	Type	Chain	Res	Link	Bond lengths			Bond angles		
					Counts	RMSZ	# Z  > 2	Counts	RMSZ	# Z  > 2
2	NAG	B	1	1,2	14,14,15	0.74	1 (7%)	17,19,21	1.96	5 (29%)
2	NAG	B	2	2	14,14,15	0.75	0	17,19,21	1.23	1 (5%)
2	NAG	C	1	1,2	14,14,15	1.13	1 (7%)	17,19,21	1.66	2 (11%)
2	NAG	C	2	2	14,14,15	0.67	0	17,19,21	1.03	0
3	NAG	D	1	1,3	14,14,15	0.75	0	17,19,21	1.57	2 (11%)
3	NAG	D	2	3	14,14,15	1.12	1 (7%)	17,19,21	1.56	3 (17%)
3	MAN	D	3	1,3	11,11,12	0.95	1 (9%)	15,15,17	2.13	4 (26%)
3	MAN	D	4	3	11,11,12	0.62	0	15,15,17	1.40	4 (26%)

In the following table, the Chirals column lists the number of chiral outliers, the number of chiral centers analysed, the number of these observed in the model and the number defined in the Chemical Component Dictionary. Similar counts are reported in the Torsion and Rings columns. '-' means no outliers of that kind were identified.

Mol	Type	Chain	Res	Link	Chirals	Torsions	Rings
2	NAG	B	1	1,2	-	2/6/23/26	0/1/1/1
2	NAG	B	2	2	-	3/6/23/26	0/1/1/1
2	NAG	C	1	1,2	-	2/6/23/26	0/1/1/1
2	NAG	C	2	2	-	2/6/23/26	0/1/1/1
3	NAG	D	1	1,3	-	0/6/23/26	0/1/1/1
3	NAG	D	2	3	-	2/6/23/26	0/1/1/1
3	MAN	D	3	1,3	1/1/4/5	2/2/19/22	0/1/1/1
3	MAN	D	4	3	-	2/2/19/22	0/1/1/1

All (4) bond length outliers are listed below:

Mol	Chain	Res	Type	Atoms	Z	Observed(Å)	Ideal(Å)
3	D	2	NAG	O5-C1	-3.18	1.38	1.43
3	D	3	MAN	O5-C1	-2.15	1.40	1.43
2	B	1	NAG	O5-C1	-2.13	1.40	1.43
2	C	1	NAG	C1-C2	2.08	1.55	1.52

All (21) bond angle outliers are listed below:

Mol	Chain	Res	Type	Atoms	Z	Observed(°)	Ideal(°)
2	C	1	NAG	O5-C1-C2	-5.00	103.40	111.29
2	B	1	NAG	O5-C5-C6	4.25	113.86	107.20
3	D	3	MAN	O5-C5-C6	4.24	113.85	107.20
3	D	3	MAN	C6-C5-C4	-3.95	103.74	113.00

*Continued on next page...*

Continued from previous page...

Mol	Chain	Res	Type	Atoms	Z	Observed(°)	Ideal(°)
3	D	1	NAG	O5-C1-C2	-3.92	105.09	111.29
2	B	1	NAG	C1-O5-C5	3.83	117.38	112.19
2	C	1	NAG	C1-O5-C5	3.37	116.75	112.19
3	D	2	NAG	C4-C3-C2	-3.27	106.22	111.02
3	D	3	MAN	O3-C3-C4	-3.24	102.86	110.35
3	D	3	MAN	O5-C1-C2	-3.21	105.82	110.77
3	D	2	NAG	C3-C4-C5	-3.09	104.73	110.24
3	D	4	MAN	C1-C2-C3	-2.88	106.13	109.67
3	D	4	MAN	O5-C5-C6	2.76	111.53	107.20
2	B	2	NAG	C1-O5-C5	2.70	115.85	112.19
3	D	1	NAG	O4-C4-C5	-2.69	102.62	109.30
2	B	1	NAG	O4-C4-C3	-2.42	104.76	110.35
2	B	1	NAG	O5-C1-C2	-2.41	107.48	111.29
3	D	2	NAG	C8-C7-N2	2.39	120.14	116.10
3	D	4	MAN	C2-C3-C4	-2.29	106.94	110.89
3	D	4	MAN	O3-C3-C2	2.22	114.24	109.99
2	B	1	NAG	C4-C3-C2	2.12	114.12	111.02

All (1) chirality outliers are listed below:

Mol	Chain	Res	Type	Atom
3	D	3	MAN	C1

All (15) torsion outliers are listed below:

Mol	Chain	Res	Type	Atoms
2	C	2	NAG	C8-C7-N2-C2
2	C	2	NAG	O7-C7-N2-C2
3	D	2	NAG	C8-C7-N2-C2
3	D	2	NAG	O7-C7-N2-C2
3	D	4	MAN	O5-C5-C6-O6
3	D	4	MAN	C4-C5-C6-O6
2	B	2	NAG	C8-C7-N2-C2
3	D	3	MAN	O5-C5-C6-O6
2	B	2	NAG	O7-C7-N2-C2
2	C	1	NAG	C8-C7-N2-C2
2	C	1	NAG	O7-C7-N2-C2
2	B	1	NAG	C4-C5-C6-O6
3	D	3	MAN	C4-C5-C6-O6
2	B	1	NAG	O5-C5-C6-O6
2	B	2	NAG	C4-C5-C6-O6

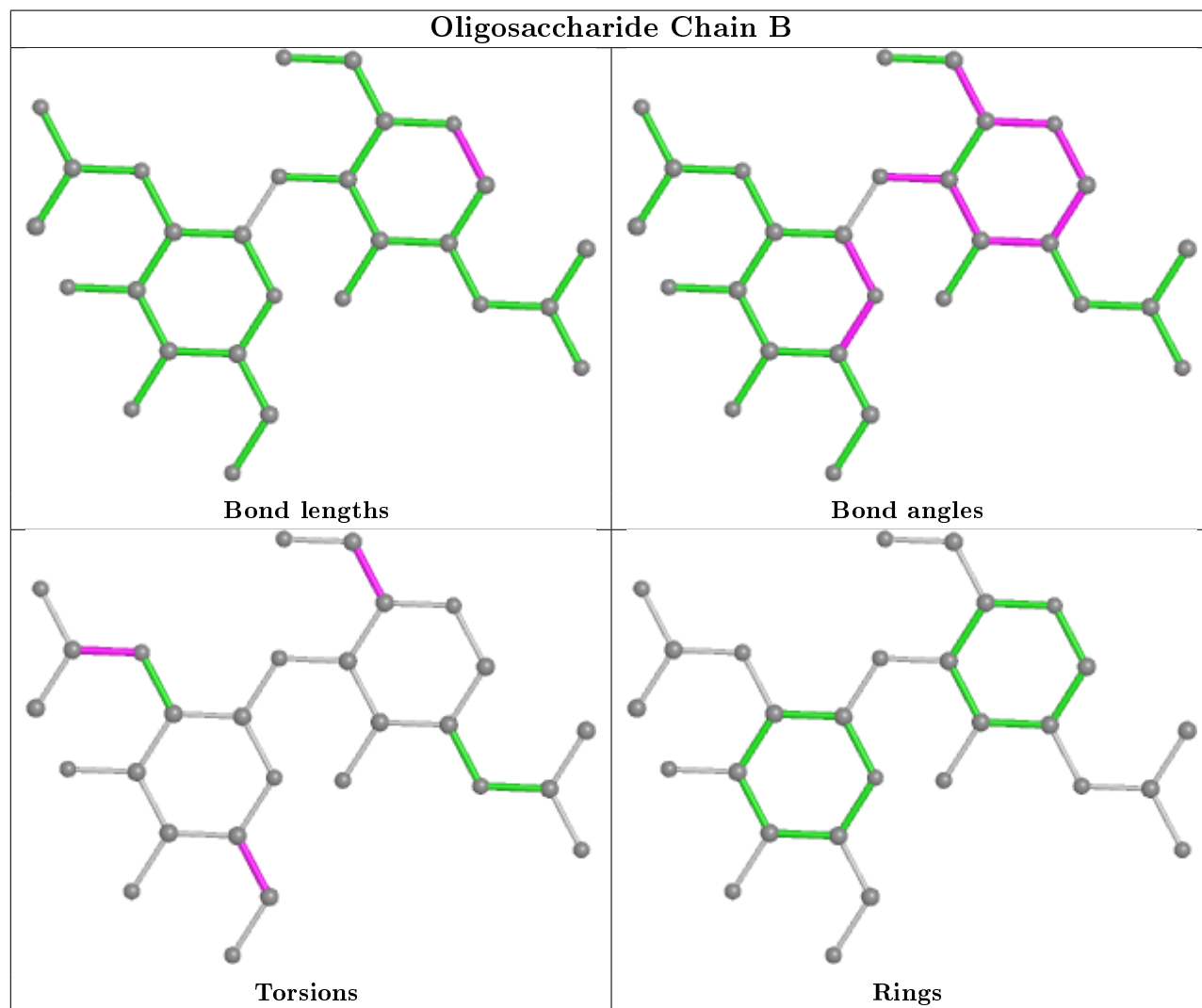


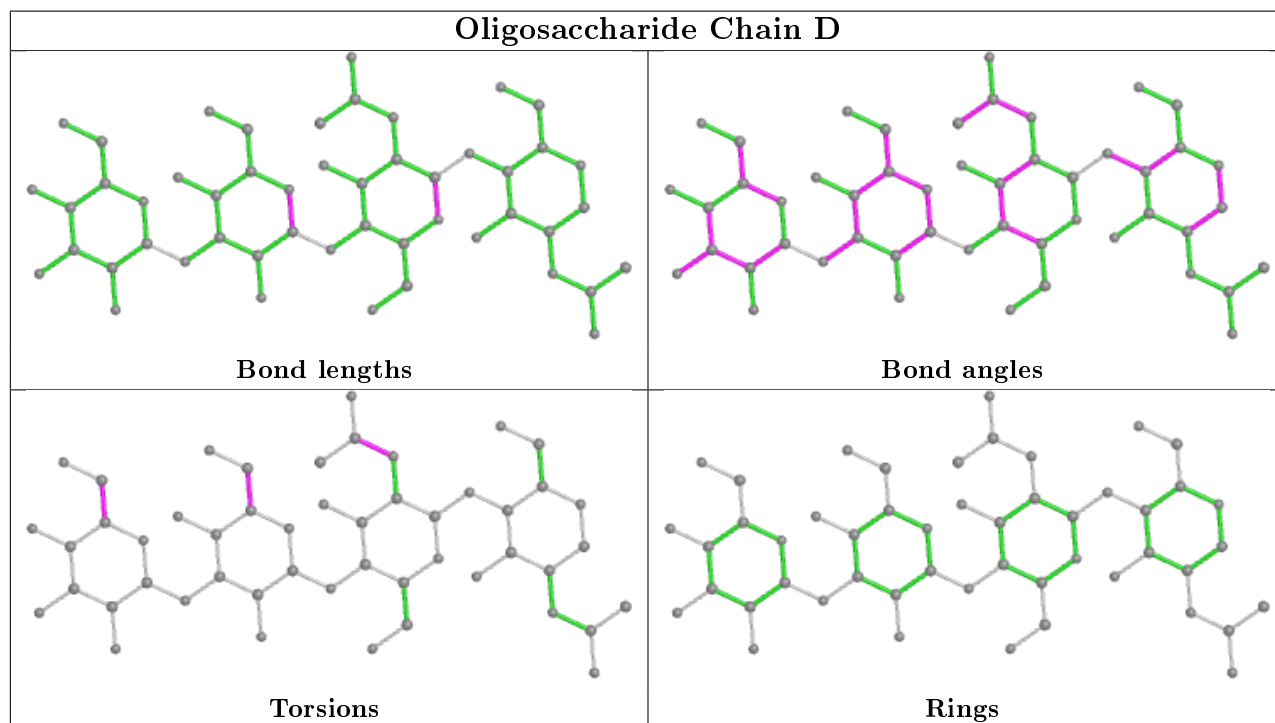
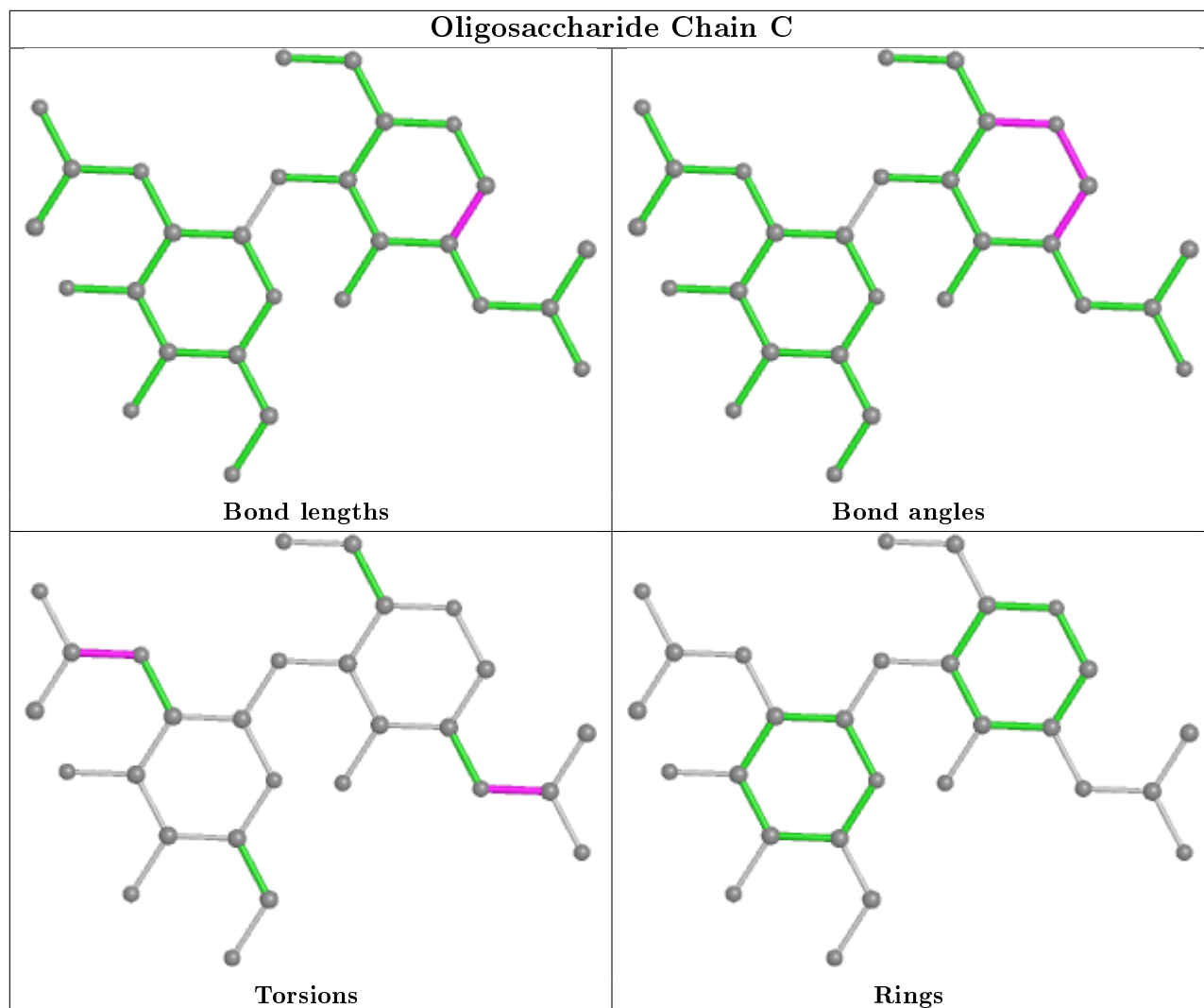
There are no ring outliers.

2 monomers are involved in 1 short contact:

Mol	Chain	Res	Type	Clashes	Symm-Clashes
3	D	1	NAG	1	0
3	D	2	NAG	1	0

The following is a two-dimensional graphical depiction of Mogul quality analysis of bond lengths, bond angles, torsion angles, and ring geometry for oligosaccharide.





## 5.6 Ligand geometry [i](#)

Of 9 ligands modelled in this entry, 4 are monoatomic - leaving 5 for Mogul analysis.

In the following table, the Counts columns list the number of bonds (or angles) for which Mogul statistics could be retrieved, the number of bonds (or angles) that are observed in the model and the number of bonds (or angles) that are defined in the Chemical Component Dictionary. The Link column lists molecule types, if any, to which the group is linked. The Z score for a bond length (or angle) is the number of standard deviations the observed value is removed from the expected value. A bond length (or angle) with  $|Z| > 2$  is considered an outlier worth inspection. RMSZ is the root-mean-square of all Z scores of the bond lengths (or angles).

Mol	Type	Chain	Res	Link	Bond lengths			Bond angles		
					Counts	RMSZ	# Z  > 2	Counts	RMSZ	# Z  > 2
7	NAG	A	1757	1	14,14,15	0.40	0	17,19,21	2.13	5 (29%)
8	24I	A	1767	4	12,21,21	1.08	1 (8%)	15,29,29	1.98	7 (46%)
7	NAG	A	1758	1	14,14,15	0.88	0	17,19,21	1.50	3 (17%)
7	NAG	A	1760	1	14,14,15	0.71	0	17,19,21	2.16	6 (35%)
7	NAG	A	1759	1	14,14,15	0.50	0	17,19,21	1.70	3 (17%)

In the following table, the Chirals column lists the number of chiral outliers, the number of chiral centers analysed, the number of these observed in the model and the number defined in the Chemical Component Dictionary. Similar counts are reported in the Torsion and Rings columns. '-' means no outliers of that kind were identified.

Mol	Type	Chain	Res	Link	Chirals	Torsions	Rings
7	NAG	A	1757	1	-	2/6/23/26	0/1/1/1
8	24I	A	1767	4	-	3/13/19/19	0/1/1/1
7	NAG	A	1758	1	-	0/6/23/26	0/1/1/1
7	NAG	A	1760	1	-	2/6/23/26	0/1/1/1
7	NAG	A	1759	1	-	4/6/23/26	0/1/1/1

All (1) bond length outliers are listed below:

Mol	Chain	Res	Type	Atoms	Z	Observed(Å)	Ideal(Å)
8	A	1767	24I	C6-C8	-2.30	1.46	1.51

All (24) bond angle outliers are listed below:

Mol	Chain	Res	Type	Atoms	Z	Observed(°)	Ideal(°)
7	A	1760	NAG	C1-O5-C5	5.52	119.67	112.19
7	A	1757	NAG	C1-O5-C5	4.40	118.15	112.19
7	A	1758	NAG	O5-C1-C2	-4.36	104.40	111.29

*Continued on next page...*

Continued from previous page...

Mol	Chain	Res	Type	Atoms	Z	Observed(°)	Ideal(°)
7	A	1759	NAG	C2-N2-C7	-4.23	116.89	122.90
7	A	1757	NAG	O5-C1-C2	-4.22	104.62	111.29
7	A	1757	NAG	O5-C5-C6	4.13	113.68	107.20
8	A	1767	24I	C12-C10-C9	-3.47	107.36	112.53
7	A	1760	NAG	O5-C5-C6	3.43	112.58	107.20
7	A	1759	NAG	C4-C3-C2	-3.34	106.12	111.02
8	A	1767	24I	C2-C1-I	-3.01	115.14	119.68
7	A	1759	NAG	O5-C1-C2	-2.85	106.78	111.29
8	A	1767	24I	C3-C1-I	2.76	123.84	119.68
7	A	1760	NAG	O7-C7-C8	-2.75	116.96	122.06
7	A	1760	NAG	O3-C3-C2	2.69	115.03	109.47
8	A	1767	24I	C3-C5-C8	-2.64	117.40	121.03
8	A	1767	24I	C6-P1-C7	-2.41	103.60	107.49
7	A	1758	NAG	C8-C7-N2	-2.34	112.13	116.10
7	A	1757	NAG	O7-C7-C8	-2.25	117.88	122.06
7	A	1760	NAG	C4-C3-C2	-2.22	107.76	111.02
7	A	1760	NAG	C3-C4-C5	-2.19	106.33	110.24
8	A	1767	24I	C4-C8-C5	2.19	121.61	118.17
8	A	1767	24I	C4-C2-C1	-2.13	116.76	119.56
7	A	1757	NAG	C2-N2-C7	-2.09	119.93	122.90
7	A	1758	NAG	O7-C7-N2	2.05	125.73	121.95

There are no chirality outliers.

All (11) torsion outliers are listed below:

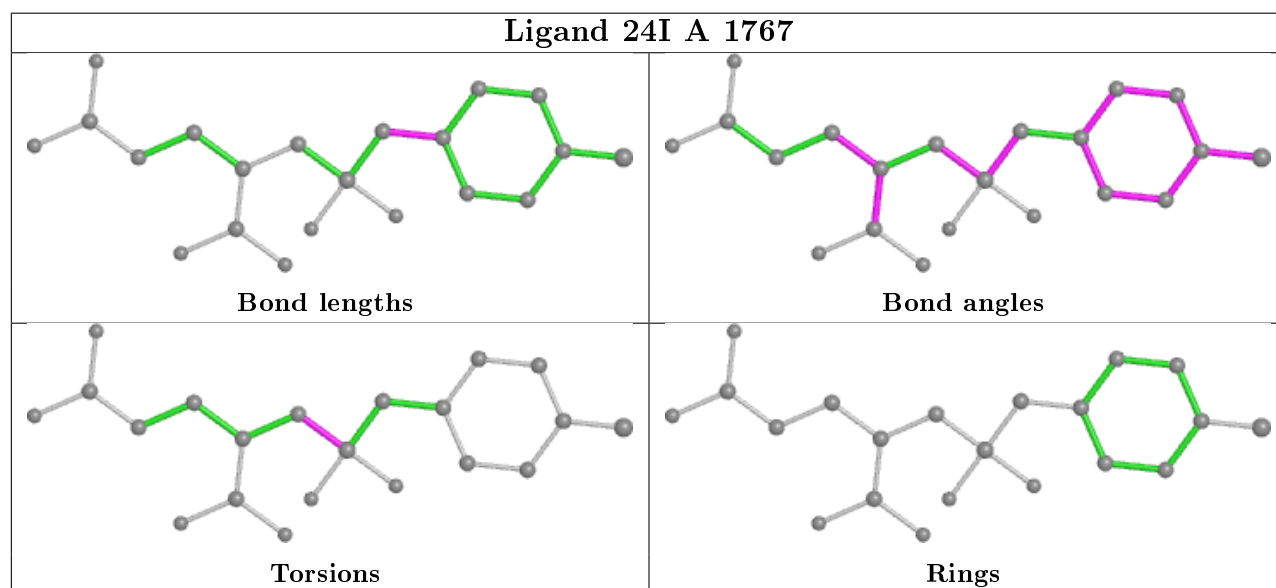
Mol	Chain	Res	Type	Atoms
8	A	1767	24I	C10-C7-P1-O1
8	A	1767	24I	C10-C7-P1-O2
8	A	1767	24I	C10-C7-P1-C6
7	A	1759	NAG	C8-C7-N2-C2
7	A	1759	NAG	O7-C7-N2-C2
7	A	1759	NAG	O5-C5-C6-O6
7	A	1760	NAG	C4-C5-C6-O6
7	A	1759	NAG	C4-C5-C6-O6
7	A	1757	NAG	C8-C7-N2-C2
7	A	1757	NAG	O7-C7-N2-C2
7	A	1760	NAG	O5-C5-C6-O6

There are no ring outliers.

1 monomer is involved in 1 short contact:

Mol	Chain	Res	Type	Clashes	Symm-Clashes
7	A	1757	NAG	1	0

The following is a two-dimensional graphical depiction of Mogul quality analysis of bond lengths, bond angles, torsion angles, and ring geometry for all instances of the Ligand of Interest. In addition, ligands with molecular weight > 250 and outliers as shown on the validation Tables will also be included. For torsion angles, if less than 5% of the Mogul distribution of torsion angles is within 10 degrees of the torsion angle in question, then that torsion angle is considered an outlier. Any bond that is central to one or more torsion angles identified as an outlier by Mogul will be highlighted in the graph. For rings, the root-mean-square deviation (RMSD) between the ring in question and similar rings identified by Mogul is calculated over all ring torsion angles. If the average RMSD is greater than 60 degrees and the minimal RMSD between the ring in question and any Mogul-identified rings is also greater than 60 degrees, then that ring is considered an outlier. The outliers are highlighted in purple. The color gray indicates Mogul did not find sufficient equivalents in the CSD to analyse the geometry.



## 5.7 Other polymers [\(i\)](#)

There are no such residues in this entry.

## 5.8 Polymer linkage issues [\(i\)](#)

There are no chain breaks in this entry.

## 6 Fit of model and data [i](#)

### 6.1 Protein, DNA and RNA chains [i](#)

In the following table, the column labelled '#RSRZ> 2' contains the number (and percentage) of RSRZ outliers, followed by percent RSRZ outliers for the chain as percentile scores relative to all X-ray entries and entries of similar resolution. The OWAB column contains the minimum, median, 95<sup>th</sup> percentile and maximum values of the occupancy-weighted average B-factor per residue. The column labelled 'Q< 0.9' lists the number of (and percentage) of residues with an average occupancy less than 0.9.

Mol	Chain	Analysed	<RSRZ>	#RSRZ>2	OWAB(Å <sup>2</sup> )	Q<0.9
1	A	682/707 (96%)	-0.17	15 (2%) 62 60	18, 33, 55, 74	0

All (15) RSRZ outliers are listed below:

Mol	Chain	Res	Type	RSRZ
1	A	719	VAL	4.2
1	A	174	LEU	3.1
1	A	155	SER	2.9
1	A	136	ASN	2.9
1	A	505	GLU	2.9
1	A	339	THR	2.7
1	A	651	GLN	2.7
1	A	237	PRO	2.5
1	A	153	ASN	2.5
1	A	547	SER	2.4
1	A	408	GLU	2.4
1	A	202	ILE	2.4
1	A	504	PRO	2.3
1	A	311	GLY	2.1
1	A	652	ASP	2.0

### 6.2 Non-standard residues in protein, DNA, RNA chains [i](#)

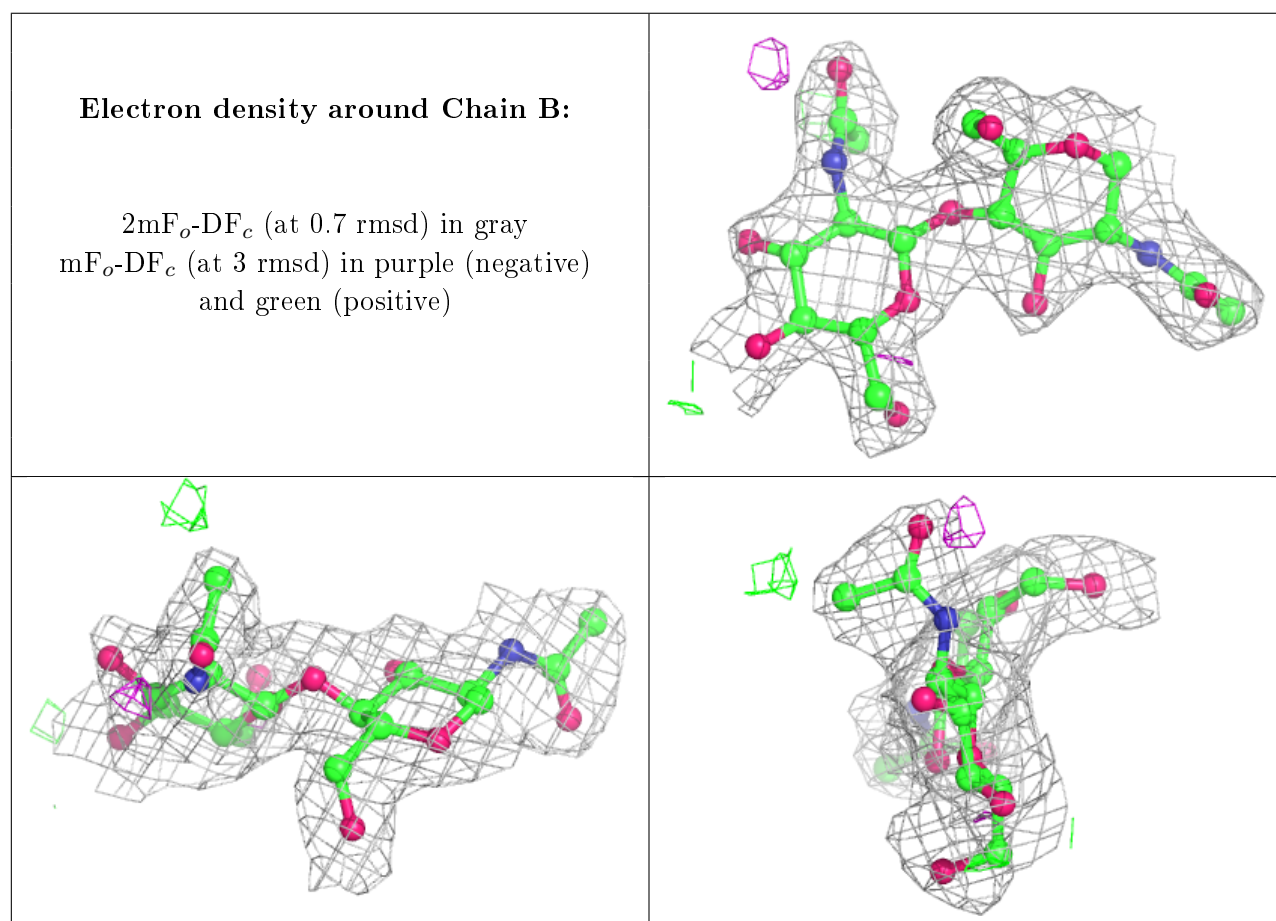
There are no non-standard protein/DNA/RNA residues in this entry.

### 6.3 Carbohydrates [i](#)

In the following table, the Atoms column lists the number of modelled atoms in the group and the number defined in the chemical component dictionary. The B-factors column lists the minimum, median, 95<sup>th</sup> percentile and maximum values of B factors of atoms in the group. The column labelled 'Q< 0.9' lists the number of atoms with occupancy less than 0.9.

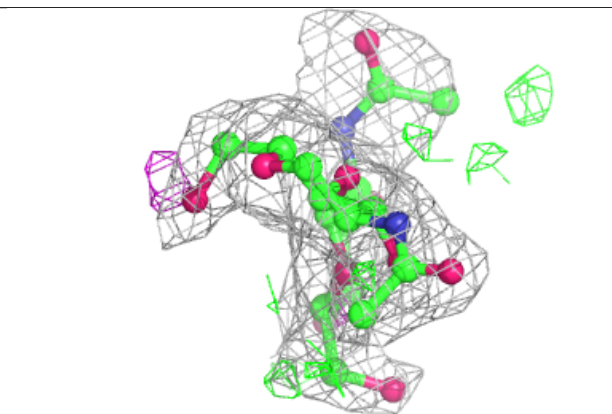
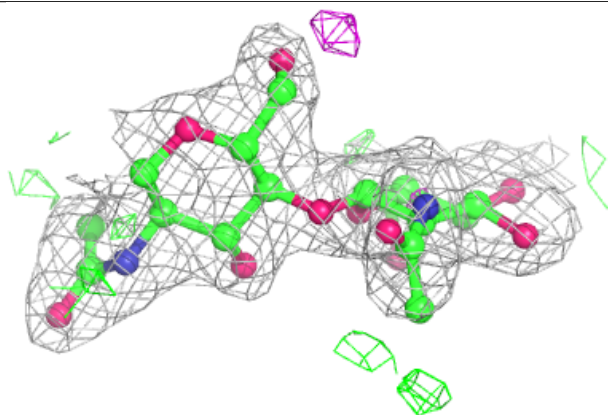
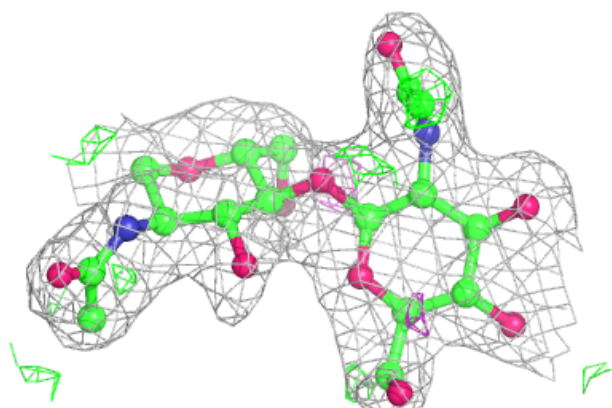
Mol	Type	Chain	Res	Atoms	RSCC	RSR	B-factors( $\text{\AA}^2$ )	Q<0.9
2	NAG	B	2	14/15	0.80	0.31	60,62,65,65	0
2	NAG	C	1	14/15	0.83	0.20	42,46,49,53	0
3	MAN	D	3	11/12	0.89	0.26	56,62,65,68	0
2	NAG	C	2	14/15	0.89	0.28	57,61,65,66	0
3	NAG	D	2	14/15	0.89	0.24	44,48,54,57	0
3	MAN	D	4	11/12	0.90	0.22	67,69,70,72	0
3	NAG	D	1	14/15	0.92	0.13	28,31,41,44	0
2	NAG	B	1	14/15	0.93	0.13	44,51,54,55	0

The following is a graphical depiction of the model fit to experimental electron density for oligosaccharide. Each fit is shown from different orientation to approximate a three-dimensional view.

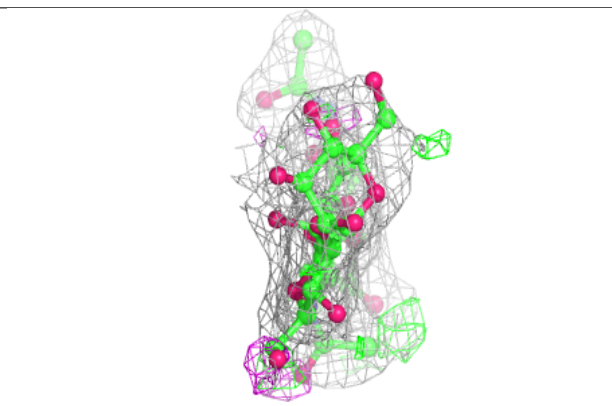
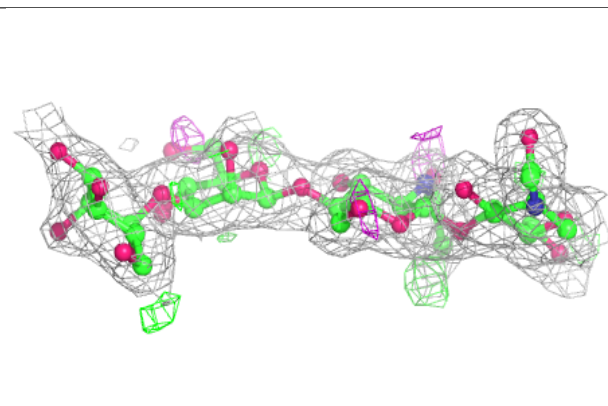
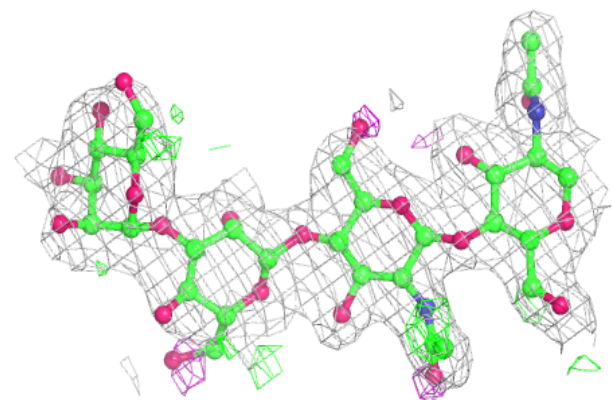


**Electron density around Chain C:**

$2mF_o-DF_c$  (at 0.7 rmsd) in gray  
 $mF_o-DF_c$  (at 3 rmsd) in purple (negative)  
and green (positive)

**Electron density around Chain D:**

$2mF_o-DF_c$  (at 0.7 rmsd) in gray  
 $mF_o-DF_c$  (at 3 rmsd) in purple (negative)  
and green (positive)



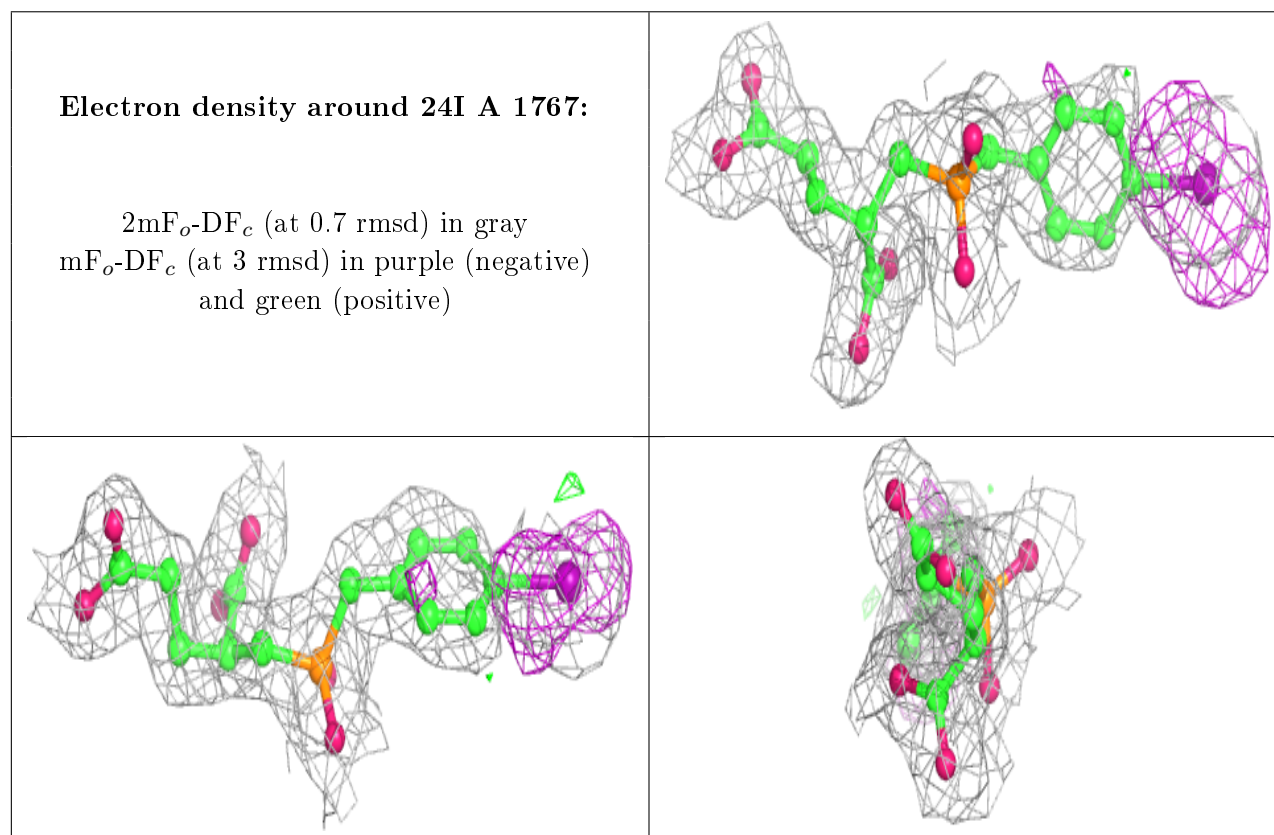


## 6.4 Ligands [i](#)

In the following table, the Atoms column lists the number of modelled atoms in the group and the number defined in the chemical component dictionary. The B-factors column lists the minimum, median, 95<sup>th</sup> percentile and maximum values of B factors of atoms in the group. The column labelled 'Q<0.9' lists the number of atoms with occupancy less than 0.9.

Mol	Type	Chain	Res	Atoms	RSCC	RSR	B-factors(Å <sup>2</sup> )	Q<0.9
7	NAG	A	1759	14/15	0.81	0.37	75,78,80,81	0
7	NAG	A	1757	14/15	0.82	0.33	62,67,69,70	0
7	NAG	A	1758	14/15	0.84	0.20	51,53,56,56	0
7	NAG	A	1760	14/15	0.85	0.19	45,56,60,62	0
8	24I	A	1767	21/21	0.98	0.08	20,23,35,41	0
5	CA	A	1753	1/1	0.99	0.09	20,20,20,20	0
6	CL	A	1754	1/1	0.99	0.06	27,27,27,27	0
4	ZN	A	1752	1/1	1.00	0.06	23,23,23,23	0
4	ZN	A	1751	1/1	1.00	0.06	23,23,23,23	0

The following is a graphical depiction of the model fit to experimental electron density of all instances of the Ligand of Interest. In addition, ligands with molecular weight > 250 and outliers as shown on the geometry validation Tables will also be included. Each fit is shown from different orientation to approximate a three-dimensional view.



## 6.5 Other polymers

There are no such residues in this entry.