



Full wwPDB X-ray Structure Validation Report ⓘ

May 24, 2020 – 11:15 pm BST

PDB ID : 2C5L
Title : Structure of PLC epsilon Ras association domain with hRas
Authors : Roe, S.M.; Bunney, T.D.; Katan, M.; Pearl, L.H.
Deposited on : 2005-10-27
Resolution : 1.90 Å(reported)

This is a Full wwPDB X-ray Structure Validation Report for a publicly released PDB entry.

We welcome your comments at validation@mail.wwpdb.org

A user guide is available at

<https://www.wwpdb.org/validation/2017/XrayValidationReportHelp>

with specific help available everywhere you see the ⓘ symbol.

The following versions of software and data (see [references ⓘ](#)) were used in the production of this report:

MolProbity : 4.02b-467
Mogul : 1.8.5 (274361), CSD as541be (2020)
Xtriage (Phenix) : 1.13
EDS : 2.11
buster-report : 1.1.7 (2018)
Percentile statistics : 20191225.v01 (using entries in the PDB archive December 25th 2019)
Refmac : 5.8.0158
CCP4 : 7.0.044 (Gargrove)
Ideal geometry (proteins) : Engh & Huber (2001)
Ideal geometry (DNA, RNA) : Parkinson et al. (1996)
Validation Pipeline (wwPDB-VP) : 2.11

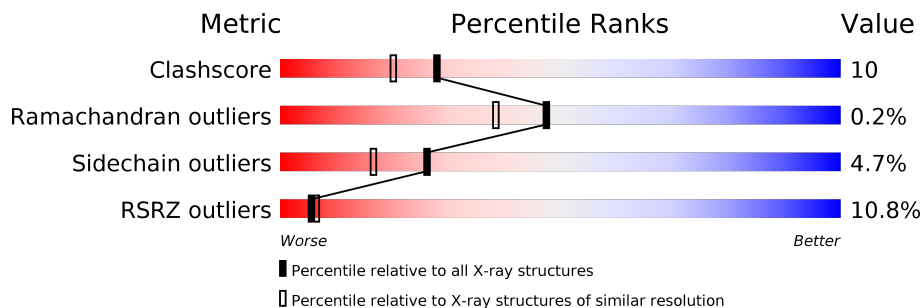
1 Overall quality at a glance

The following experimental techniques were used to determine the structure:

X-RAY DIFFRACTION

The reported resolution of this entry is 1.90 Å.

Percentile scores (ranging between 0-100) for global validation metrics of the entry are shown in the following graphic. The table shows the number of entries on which the scores are based.



Metric	Whole archive (#Entries)	Similar resolution (#Entries, resolution range(Å))
Clashscore	141614	6847 (1.90-1.90)
Ramachandran outliers	138981	6760 (1.90-1.90)
Sidechain outliers	138945	6760 (1.90-1.90)
RSRZ outliers	127900	6082 (1.90-1.90)

The table below summarises the geometric issues observed across the polymeric chains and their fit to the electron density. The red, orange, yellow and green segments on the lower bar indicate the fraction of residues that contain outliers for ≥ 3 , 2, 1 and 0 types of geometric quality criteria respectively. A grey segment represents the fraction of residues that are not modelled. The numeric value for each fraction is indicated below the corresponding segment, with a dot representing fractions $\leq 5\%$. The upper red bar (where present) indicates the fraction of residues that have poor fit to the electron density. The numeric value is given above the bar.

Mol	Chain	Length	Quality of chain
1	A	173	<p>79% 14% . .</p>
1	B	173	<p>80% 13% . .</p>
2	C	117	<p>4% 66% 16% . 17%</p>
2	D	117	<p>40% 55% 11% . 31%</p>

The following table lists non-polymeric compounds, carbohydrate monomers and non-standard residues in protein, DNA, RNA chains that are outliers for geometric or electron-density-fit criteria:

Mol	Type	Chain	Res	Chirality	Geometry	Clashes	Electron density
5	GOL	B	1169	-	-	X	-
5	GOL	C	3240	-	-	X	X

2 Entry composition [i](#)

There are 6 unique types of molecules in this entry. The entry contains 4690 atoms, of which 0 are hydrogens and 0 are deuteriums.

In the tables below, the ZeroOcc column contains the number of atoms modelled with zero occupancy, the AltConf column contains the number of residues with at least one atom in alternate conformation and the Trace column contains the number of residues modelled with at most 2 atoms.

- Molecule 1 is a protein called GTPASE HRAS.

Mol	Chain	Residues	Atoms					ZeroOcc	AltConf	Trace
			Total	C	N	O	S			
1	A	166	1361	851	231	272	7	0	6	0
1	B	166	1353	846	232	267	8	0	5	0

There are 2 discrepancies between the modelled and reference sequences:

Chain	Residue	Modelled	Actual	Comment	Reference
A	12	VAL	GLY	engineered mutation	UNP P01112
B	12	VAL	GLY	engineered mutation	UNP P01112

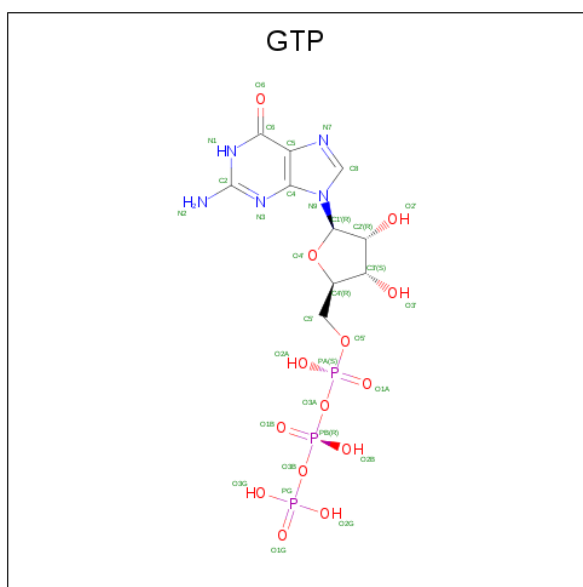
- Molecule 2 is a protein called PHOSPHOINOSITIDE-SPECIFIC PHOSPHOLIPASE C PLC-EPSILON.

Mol	Chain	Residues	Atoms					ZeroOcc	AltConf	Trace
			Total	C	N	O	S			
2	C	97	773	494	131	145	3	0	3	0
2	D	81	637	409	107	119	2	0	0	0

There are 2 discrepancies between the modelled and reference sequences:

Chain	Residue	Modelled	Actual	Comment	Reference
C	2176	LEU	TYR	engineered mutation	UNP Q9HBX6
D	2176	LEU	TYR	engineered mutation	UNP Q9HBX6

- Molecule 3 is GUANOSINE-5'-TRIPHOSPHATE (three-letter code: GTP) (formula: $C_{10}H_{16}N_5O_{14}P_3$).



Mol	Chain	Residues	Atoms					ZeroOcc	AltConf
			Total	C	N	O	P		
3	A	1	32	10	5	14	3	0	0
3	B	1	32	10	5	14	3	0	0

- Molecule 4 is MAGNESIUM ION (three-letter code: MG) (formula: Mg).

Mol	Chain	Residues	Atoms		ZeroOcc	AltConf
			Total	Mg		
4	B	1	1	1	0	0
4	A	1	1	1	0	0

- Molecule 5 is GLYCEROL (three-letter code: GOL) (formula: C₃H₈O₃).



Mol	Chain	Residues	Atoms	ZeroOcc	AltConf
5	A	1	Total C O 6 3 3	0	0
5	A	1	Total C O 6 3 3	0	0
5	B	1	Total C O 6 3 3	0	0
5	C	1	Total C O 6 3 3	0	0

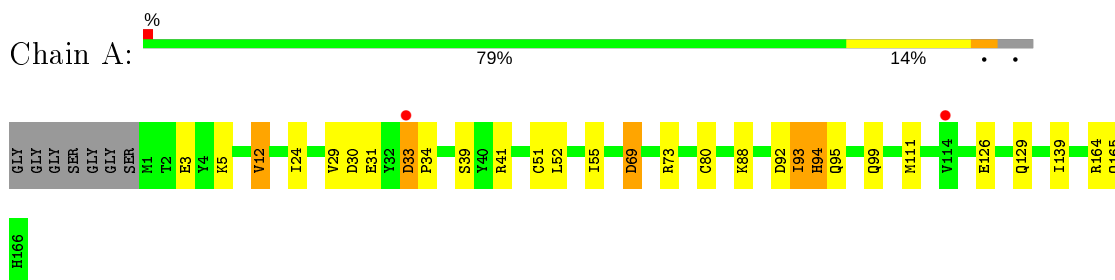
- Molecule 6 is water.

Mol	Chain	Residues	Atoms	ZeroOcc	AltConf
6	A	174	Total O 174 174	0	0
6	B	171	Total O 171 171	0	0
6	C	106	Total O 106 106	0	0
6	D	25	Total O 25 25	0	0

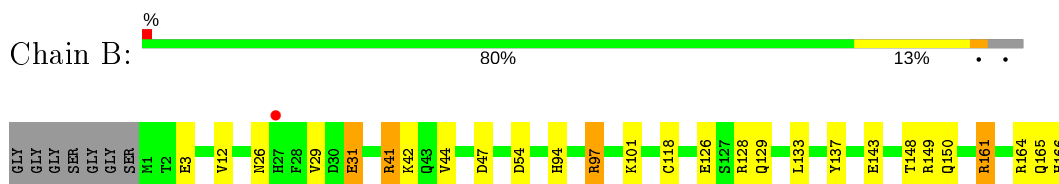
3 Residue-property plots [i](#)

These plots are drawn for all protein, RNA and DNA chains in the entry. The first graphic for a chain summarises the proportions of the various outlier classes displayed in the second graphic. The second graphic shows the sequence view annotated by issues in geometry and electron density. Residues are color-coded according to the number of geometric quality criteria for which they contain at least one outlier: green = 0, yellow = 1, orange = 2 and red = 3 or more. A red dot above a residue indicates a poor fit to the electron density ($RSRZ > 2$). Stretches of 2 or more consecutive residues without any outlier are shown as a green connector. Residues present in the sample, but not in the model, are shown in grey.

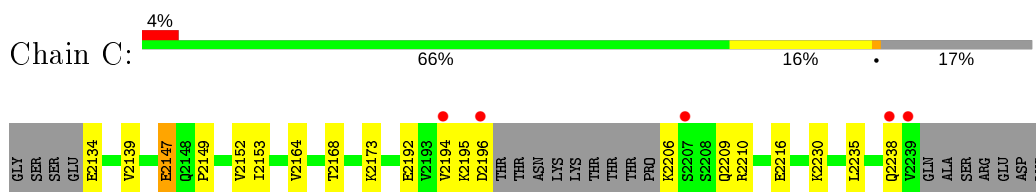
- Molecule 1: GTPASE HRAS



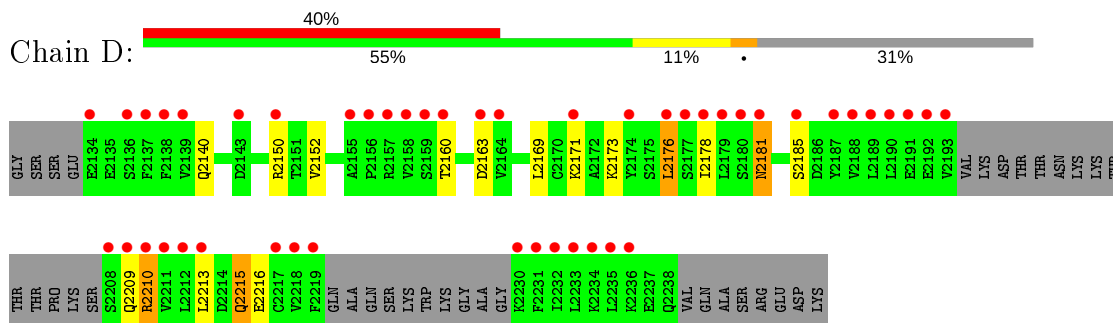
- Molecule 1: GTPASE HRAS



- Molecule 2: PHOSPHOINOSITIDE-SPECIFIC PHOSPHOLIPASE C PLC-EPSILON



- Molecule 2: PHOSPHOINOSITIDE-SPECIFIC PHOSPHOLIPASE C PLC-EPSILON



4 Data and refinement statistics

Property	Value	Source
Space group	P 21 21 21	Depositor
Cell constants a, b, c, α , β , γ	72.42Å 93.62Å 111.49Å 90.00° 90.00° 90.00°	Depositor
Resolution (Å)	111.80 – 1.90 47.90 – 1.91	Depositor EDS
% Data completeness (in resolution range)	99.9 (111.80-1.90) 99.5 (47.90-1.91)	Depositor EDS
R_{merge}	0.08	Depositor
R_{sym}	(Not available)	Depositor
$\langle I/\sigma(I) \rangle$ ¹	2.51 (at 1.91Å)	Xtrriage
Refinement program	REFMAC 5.2.0005	Depositor
R, R_{free}	0.185 , 0.228 0.192 , (Not available)	Depositor DCC
R_{free} test set	No test flags present.	wwPDB-VP
Wilson B-factor (Å ²)	25.1	Xtrriage
Anisotropy	0.442	Xtrriage
Bulk solvent k_{sol} (e/Å ³), B_{sol} (Å ²)	0.37 , 51.2	EDS
L-test for twinning ²	$\langle L \rangle = 0.48$, $\langle L^2 \rangle = 0.32$	Xtrriage
Estimated twinning fraction	No twinning to report.	Xtrriage
F_o, F_c correlation	0.95	EDS
Total number of atoms	4690	wwPDB-VP
Average B, all atoms (Å ²)	31.0	wwPDB-VP

Xtrriage's analysis on translational NCS is as follows: *The largest off-origin peak in the Patterson function is 5.06% of the height of the origin peak. No significant pseudotranslation is detected.*

¹Intensities estimated from amplitudes.

²Theoretical values of $\langle |L| \rangle$, $\langle L^2 \rangle$ for acentric reflections are 0.5, 0.333 respectively for untwinned datasets, and 0.375, 0.2 for perfectly twinned datasets.

5 Model quality

5.1 Standard geometry

Bond lengths and bond angles in the following residue types are not validated in this section: GTP, GOL, MG

The Z score for a bond length (or angle) is the number of standard deviations the observed value is removed from the expected value. A bond length (or angle) with $|Z| > 5$ is considered an outlier worth inspection. RMSZ is the root-mean-square of all Z scores of the bond lengths (or angles).

Mol	Chain	Bond lengths		Bond angles	
		RMSZ	# $ Z > 5$	RMSZ	# $ Z > 5$
1	A	0.93	1/1392 (0.1%)	0.75	0/1879
1	B	0.79	0/1387	0.87	3/1871 (0.2%)
2	C	0.84	0/794	0.80	1/1074 (0.1%)
2	D	0.48	0/646	0.63	0/874
All	All	0.81	1/4219 (0.0%)	0.78	4/5698 (0.1%)

All (1) bond length outliers are listed below:

Mol	Chain	Res	Type	Atoms	Z	Observed(Å)	Ideal(Å)
1	A	51	CYS	CB-SG	-7.85	1.69	1.82

All (4) bond angle outliers are listed below:

Mol	Chain	Res	Type	Atoms	Z	Observed(°)	Ideal(°)
1	B	161	ARG	NE-CZ-NH1	14.86	127.73	120.30
1	B	161	ARG	NE-CZ-NH2	-13.84	113.38	120.30
1	B	161	ARG	CD-NE-CZ	6.12	132.17	123.60
2	C	2139	VAL	CB-CA-C	-5.21	101.50	111.40

There are no chirality outliers.

There are no planarity outliers.

5.2 Too-close contacts

In the following table, the Non-H and H(model) columns list the number of non-hydrogen atoms and hydrogen atoms in the chain respectively. The H(added) column lists the number of hydrogen atoms added and optimized by MolProbity. The Clashes column lists the number of clashes within the asymmetric unit, whereas Symm-Clashes lists symmetry related clashes.

Mol	Chain	Non-H	H(model)	H(added)	Clashes	Symm-Clashes
1	A	1361	0	1341	25	0
1	B	1353	0	1341	24	0
2	C	773	0	788	15	0
2	D	637	0	645	16	0
3	A	32	0	12	0	0
3	B	32	0	12	0	0
4	A	1	0	0	0	0
4	B	1	0	0	0	0
5	A	12	0	16	1	0
5	B	6	0	8	4	0
5	C	6	0	8	4	0
6	A	174	0	0	8	0
6	B	171	0	0	8	0
6	C	106	0	0	8	0
6	D	25	0	0	3	0
All	All	4690	0	4171	83	0

The all-atom clashscore is defined as the number of clashes found per 1000 atoms (including hydrogen atoms). The all-atom clashscore for this structure is 10.

All (83) close contacts within the same asymmetric unit are listed below, sorted by their clash magnitude.

Atom-1	Atom-2	Interatomic distance (Å)	Clash overlap (Å)
5:C:3240:GOL:H12	6:C:2106:HOH:O	1.08	1.22
1:A:33:ASP:HB2	6:A:2036:HOH:O	1.76	0.83
2:C:2173:LYS:HD2	6:C:2059:HOH:O	1.81	0.80
1:B:164:ARG:HE	1:B:165:GLN:HE21	1.30	0.79
2:D:2150:ARG:HD2	6:D:2011:HOH:O	1.83	0.79
2:C:2147:GLU:HG3	6:C:2037:HOH:O	1.83	0.79
1:A:164:ARG:HE	1:A:165:GLN:HE21	1.31	0.77
1:B:97[B]:ARG:NE	1:B:101:LYS:HD2	2.03	0.73
1:B:94:HIS:HB2	5:B:1169:GOL:H31	1.71	0.72
5:B:1169:GOL:H32	6:B:2101:HOH:O	1.89	0.71
2:D:2140:GLN:HG2	2:D:2152:VAL:HG22	1.73	0.71
1:A:99:GLN:OE1	6:A:2112:HOH:O	2.10	0.69
5:B:1169:GOL:C3	6:B:2101:HOH:O	2.40	0.68
1:A:3[B]:GLU:HG2	1:A:52:LEU:HD23	1.76	0.68
1:A:30[B]:ASP:OD1	6:A:2028:HOH:O	2.13	0.66
1:A:69:ASP:OD2	1:A:73:ARG:NH2	2.30	0.65
2:D:2209:GLN:O	2:D:2210:ARG:CB	2.48	0.62
1:A:94:HIS:CD2	1:A:94:HIS:H	2.18	0.62
2:D:2171:LYS:NZ	6:D:2016:HOH:O	2.33	0.62

Continued on next page...

Continued from previous page...

Atom-1	Atom-2	Interatomic distance (Å)	Clash overlap (Å)
2:D:2160:THR:HG22	2:D:2163:ASP:CG	2.20	0.61
1:B:97[B]:ARG:HD2	6:B:2109:HOH:O	2.02	0.60
1:A:33:ASP:OD1	6:A:2036:HOH:O	2.16	0.60
1:A:3[A]:GLU:OE1	1:A:5:LYS:NZ	2.36	0.59
1:B:126:GLU:H	1:B:129:GLN:HE21	1.50	0.59
2:C:2147:GLU:CG	6:C:2037:HOH:O	2.45	0.58
1:B:97[A]:ARG:HD3	1:B:137:TYR:CD2	2.37	0.58
1:B:47:ASP:OD2	1:B:161:ARG:HD3	2.03	0.58
1:B:118[B]:CYS:SG	1:B:143:GLU:HB3	2.46	0.56
5:C:3240:GOL:C1	6:C:2106:HOH:O	1.95	0.56
1:A:95:GLN:HB3	6:A:2107:HOH:O	2.06	0.56
2:C:2192:GLU:OE2	2:C:2209:GLN:NE2	2.36	0.55
2:D:2213:LEU:HB2	2:D:2216:GLU:HB2	1.89	0.54
2:C:2210:ARG:NH1	5:C:3240:GOL:H11	2.21	0.54
1:B:41:ARG:HH22	1:B:54:ASP:HB2	1.73	0.53
1:B:41:ARG:NH2	1:B:54:ASP:HB2	2.24	0.53
1:B:97[B]:ARG:CZ	1:B:101:LYS:HD2	2.38	0.52
1:B:148:THR:O	1:B:149:ARG:HB2	2.08	0.52
2:C:2238:GLN:HG2	6:C:2102:HOH:O	2.10	0.52
1:B:42:LYS:HE3	1:B:44:VAL:CG1	2.40	0.51
1:A:111:MET:HE2	1:A:139:ILE:HD13	1.91	0.51
1:A:39[B]:SER:O	2:C:2149:PRO:HD2	2.11	0.51
1:B:133:LEU:HD13	5:B:1169:GOL:H11	1.91	0.51
1:B:42:LYS:HE3	1:B:44:VAL:HG12	1.93	0.51
2:D:2169:LEU:HD23	2:D:2178:ILE:HD13	1.94	0.50
5:A:1169:GOL:H2	2:C:2152:VAL:HG11	1.93	0.49
1:A:12[B]:VAL:HG23	6:A:2013:HOH:O	2.11	0.49
1:A:24:ILE:HD11	1:A:55:ILE:HD12	1.94	0.49
1:A:94:HIS:H	1:A:94:HIS:HD2	1.62	0.48
1:B:29:VAL:HG23	1:B:31:GLU:HG3	1.95	0.48
1:B:97[A]:ARG:HD3	1:B:137:TYR:CG	2.48	0.48
1:A:126:GLU:H	1:A:129:GLN:HE21	1.61	0.47
6:B:2044:HOH:O	2:D:2171:LYS:HD2	2.12	0.47
1:A:126:GLU:H	1:A:129:GLN:NE2	2.12	0.47
1:A:164:ARG:HE	1:A:165:GLN:NE2	2.05	0.47
6:B:2022:HOH:O	2:D:2176:LEU:HB2	2.16	0.46
2:C:2134:GLU:N	6:C:2017:HOH:O	2.48	0.46
1:B:97[A]:ARG:HG2	6:B:2109:HOH:O	2.16	0.46
1:A:88:LYS:HE3	6:A:2105:HOH:O	2.17	0.45
2:D:2209:GLN:O	2:D:2210:ARG:HB2	2.17	0.45
2:C:2147:GLU:CD	6:C:2037:HOH:O	2.55	0.45

Continued on next page...

Continued from previous page...

Atom-1	Atom-2	Interatomic distance (Å)	Clash overlap (Å)
1:B:164:ARG:HE	1:B:165:GLN:NE2	2.07	0.44
1:A:33:ASP:CB	6:A:2036:HOH:O	2.50	0.44
2:C:2235:LEU:HB2	2:C:2238:GLN:HG3	1.98	0.44
1:A:29:VAL:HG13	1:A:31:GLU:CD	2.37	0.44
2:C:2153[A]:ILE:HD11	2:C:2164:VAL:HG13	1.99	0.44
1:B:94:HIS:CE1	6:B:2109:HOH:O	2.71	0.43
2:D:2181:ASN:HD22	2:D:2181:ASN:N	2.16	0.43
1:A:33:ASP:HA	1:A:34:PRO:HD3	1.89	0.42
1:A:80:CYS:HB3	1:A:93[A]:ILE:HD12	2.01	0.42
2:C:2216:GLU:OE1	5:C:3240:GOL:H2	2.19	0.42
2:C:2153[B]:ILE:HD11	2:C:2168:THR:HA	2.00	0.42
2:D:2209:GLN:O	2:D:2210:ARG:HB3	2.19	0.42
2:D:2160:THR:OG1	2:D:2215:GLN:HA	2.19	0.42
1:B:26:ASN:ND2	1:B:149:ARG:NH2	2.68	0.42
1:B:3:GLU:OE2	1:B:41:ARG:NH2	2.53	0.41
1:B:26:ASN:HD22	1:B:149:ARG:NH2	2.19	0.41
2:D:2210:ARG:HH22	2:D:2216:GLU:CD	2.24	0.41
2:C:2195:LYS:HA	2:C:2196:ASP:C	2.40	0.41
2:D:2160:THR:CG2	2:D:2163:ASP:H	2.34	0.41
1:A:73:ARG:HH11	1:A:73:ARG:HG2	1.85	0.41
1:A:92:ASP:O	1:A:95:GLN:HG2	2.21	0.41
2:D:2160:THR:HG21	6:D:2024:HOH:O	2.20	0.41
1:B:166:HIS:HD2	6:B:2123:HOH:O	2.05	0.40

There are no symmetry-related clashes.

5.3 Torsion angles [\(i\)](#)

5.3.1 Protein backbone [\(i\)](#)

In the following table, the Percentiles column shows the percent Ramachandran outliers of the chain as a percentile score with respect to all X-ray entries followed by that with respect to entries of similar resolution.

The Analysed column shows the number of residues for which the backbone conformation was analysed, and the total number of residues.

Mol	Chain	Analysed	Favoured	Allowed	Outliers	Percentiles	
1	A	170/173 (98%)	167 (98%)	3 (2%)	0	100	100
1	B	169/173 (98%)	167 (99%)	2 (1%)	0	100	100

Continued on next page...

Continued from previous page...

Mol	Chain	Analysed	Favoured	Allowed	Outliers	Percentiles	
2	C	96/117 (82%)	95 (99%)	1 (1%)	0	100	100
2	D	75/117 (64%)	72 (96%)	2 (3%)	1 (1%)	12	4
All	All	510/580 (88%)	501 (98%)	8 (2%)	1 (0%)	47	38

All (1) Ramachandran outliers are listed below:

Mol	Chain	Res	Type
2	D	2210	ARG

5.3.2 Protein sidechains [i](#)

In the following table, the Percentiles column shows the percent sidechain outliers of the chain as a percentile score with respect to all X-ray entries followed by that with respect to entries of similar resolution.

The Analysed column shows the number of residues for which the sidechain conformation was analysed, and the total number of residues.

Mol	Chain	Analysed	Rotameric	Outliers	Percentiles	
1	A	151/147 (103%)	143 (95%)	8 (5%)	22	13
1	B	150/147 (102%)	143 (95%)	7 (5%)	26	16
2	C	89/108 (82%)	85 (96%)	4 (4%)	27	18
2	D	74/108 (68%)	69 (93%)	5 (7%)	16	7
All	All	464/510 (91%)	440 (95%)	24 (5%)	26	14

All (24) residues with a non-rotameric sidechain are listed below:

Mol	Chain	Res	Type
1	A	12[A]	VAL
1	A	12[B]	VAL
1	A	33	ASP
1	A	41	ARG
1	A	69	ASP
1	A	93[A]	ILE
1	A	93[B]	ILE
1	A	94	HIS
1	B	12	VAL
1	B	31	GLU
1	B	41	ARG

Continued on next page...

Continued from previous page...

Mol	Chain	Res	Type
1	B	97[A]	ARG
1	B	97[B]	ARG
1	B	128	ARG
1	B	150	GLN
2	C	2147	GLU
2	C	2194	VAL
2	C	2206	LYS
2	C	2230	LYS
2	D	2173	LYS
2	D	2176	LEU
2	D	2181	ASN
2	D	2185	SER
2	D	2215	GLN

Some sidechains can be flipped to improve hydrogen bonding and reduce clashes. All (12) such sidechains are listed below:

Mol	Chain	Res	Type
1	A	94	HIS
1	A	95	GLN
1	A	99	GLN
1	A	129	GLN
1	A	165	GLN
1	B	26	ASN
1	B	129	GLN
1	B	165	GLN
2	C	2167	GLN
2	D	2167	GLN
2	D	2181	ASN
2	D	2209	GLN

5.3.3 RNA [i](#)

There are no RNA molecules in this entry.

5.4 Non-standard residues in protein, DNA, RNA chains [i](#)

There are no non-standard protein/DNA/RNA residues in this entry.

5.5 Carbohydrates [i](#)

There are no carbohydrates in this entry.

5.6 Ligand geometry [i](#)

Of 8 ligands modelled in this entry, 2 are monoatomic - leaving 6 for Mogul analysis.

In the following table, the Counts columns list the number of bonds (or angles) for which Mogul statistics could be retrieved, the number of bonds (or angles) that are observed in the model and the number of bonds (or angles) that are defined in the Chemical Component Dictionary. The Link column lists molecule types, if any, to which the group is linked. The Z score for a bond length (or angle) is the number of standard deviations the observed value is removed from the expected value. A bond length (or angle) with $|Z| > 2$ is considered an outlier worth inspection. RMSZ is the root-mean-square of all Z scores of the bond lengths (or angles).

Mol	Type	Chain	Res	Link	Bond lengths			Bond angles		
					Counts	RMSZ	# Z > 2	Counts	RMSZ	# Z > 2
5	GOL	A	1169	-	5,5,5	0.31	0	5,5,5	0.62	0
5	GOL	B	1169	-	5,5,5	0.41	0	5,5,5	0.97	0
3	GTP	A	1167	4	26,34,34	1.24	3 (11%)	33,54,54	1.60	6 (18%)
5	GOL	A	1170	-	5,5,5	0.39	0	5,5,5	0.61	0
3	GTP	B	1167	4	26,34,34	1.11	2 (7%)	33,54,54	1.73	9 (27%)
5	GOL	C	3240	-	5,5,5	0.46	0	5,5,5	1.36	0

In the following table, the Chirals column lists the number of chiral outliers, the number of chiral centers analysed, the number of these observed in the model and the number defined in the Chemical Component Dictionary. Similar counts are reported in the Torsion and Rings columns. '-' means no outliers of that kind were identified.

Mol	Type	Chain	Res	Link	Chirals	Torsions	Rings
5	GOL	A	1169	-	-	4/4/4/4	-
5	GOL	B	1169	-	-	2/4/4/4	-
3	GTP	A	1167	4	-	2/18/38/38	0/3/3/3
5	GOL	A	1170	-	-	2/4/4/4	-
3	GTP	B	1167	4	-	2/18/38/38	0/3/3/3
5	GOL	C	3240	-	-	2/4/4/4	-

All (5) bond length outliers are listed below:

Mol	Chain	Res	Type	Atoms	Z	Observed(Å)	Ideal(Å)
3	A	1167	GTP	C6-N1	3.77	1.39	1.33
3	B	1167	GTP	C6-N1	3.41	1.39	1.33

Continued on next page...

Continued from previous page...

Mol	Chain	Res	Type	Atoms	Z	Observed(Å)	Ideal(Å)
3	A	1167	GTP	C2-N1	2.81	1.40	1.35
3	B	1167	GTP	C2-N1	2.59	1.40	1.35
3	A	1167	GTP	PG-O3G	-2.04	1.47	1.54

All (15) bond angle outliers are listed below:

Mol	Chain	Res	Type	Atoms	Z	Observed(°)	Ideal(°)
3	B	1167	GTP	N3-C2-N1	-5.19	120.30	127.22
3	A	1167	GTP	N3-C2-N1	-5.03	120.51	127.22
3	A	1167	GTP	C5-C6-N1	-3.46	118.70	123.43
3	B	1167	GTP	C5-C6-N1	-3.33	118.88	123.43
3	B	1167	GTP	C6-N1-C2	3.15	120.94	115.93
3	A	1167	GTP	C6-N1-C2	3.14	120.91	115.93
3	B	1167	GTP	C2-N3-C4	3.08	118.88	115.36
3	B	1167	GTP	N2-C2-N1	2.80	121.61	117.25
3	A	1167	GTP	C2-N3-C4	2.80	118.56	115.36
3	B	1167	GTP	O2G-PG-O3B	2.29	112.31	104.64
3	A	1167	GTP	O3G-PG-O3B	2.18	111.95	104.64
3	B	1167	GTP	PA-O3A-PB	-2.17	125.38	132.83
3	B	1167	GTP	PB-O3B-PG	-2.15	125.43	132.83
3	B	1167	GTP	C6-C5-C4	-2.07	118.82	120.80
3	A	1167	GTP	N2-C2-N3	2.05	121.13	117.79

There are no chirality outliers.

All (14) torsion outliers are listed below:

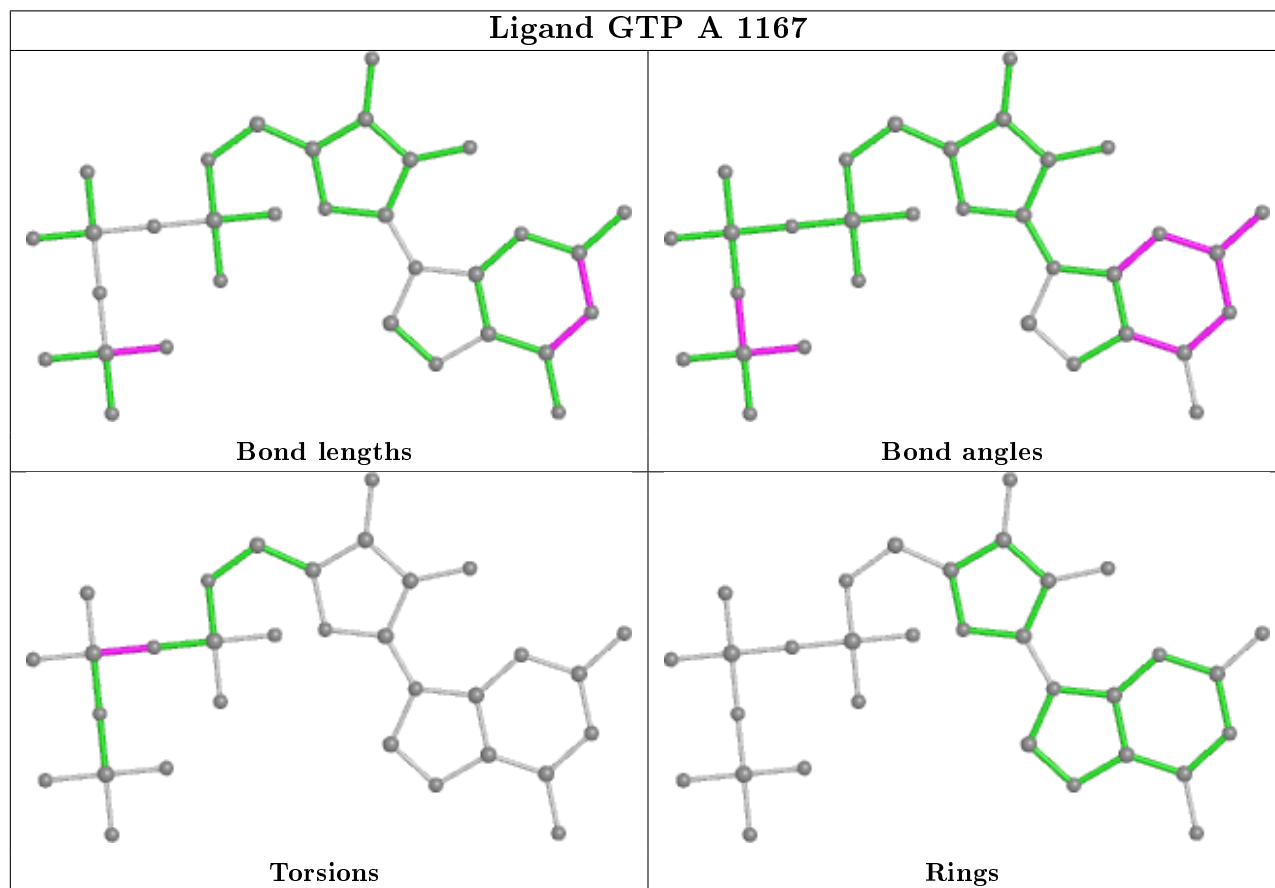
Mol	Chain	Res	Type	Atoms
5	A	1169	GOL	O1-C1-C2-C3
5	A	1169	GOL	C1-C2-C3-O3
5	A	1169	GOL	O2-C2-C3-O3
5	A	1170	GOL	C1-C2-C3-O3
5	A	1169	GOL	O1-C1-C2-O2
5	C	3240	GOL	O1-C1-C2-O2
3	A	1167	GTP	PA-O3A-PB-O1B
3	A	1167	GTP	PA-O3A-PB-O2B
3	B	1167	GTP	PA-O3A-PB-O2B
5	A	1170	GOL	O2-C2-C3-O3
5	C	3240	GOL	O2-C2-C3-O3
5	B	1169	GOL	O1-C1-C2-O2
3	B	1167	GTP	PA-O3A-PB-O1B
5	B	1169	GOL	O1-C1-C2-C3

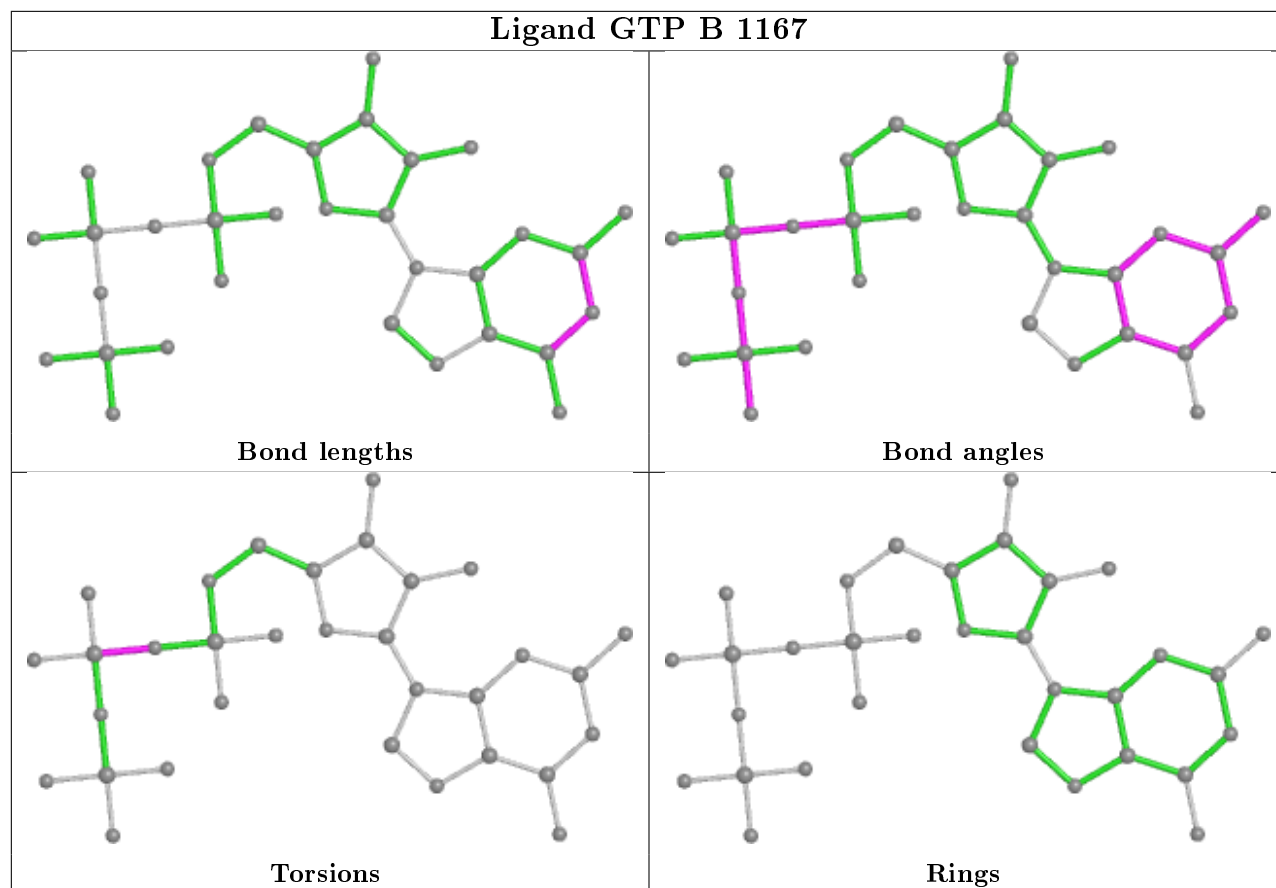
There are no ring outliers.

3 monomers are involved in 9 short contacts:

Mol	Chain	Res	Type	Clashes	Symm-Clashes
5	A	1169	GOL	1	0
5	B	1169	GOL	4	0
5	C	3240	GOL	4	0

The following is a two-dimensional graphical depiction of Mogul quality analysis of bond lengths, bond angles, torsion angles, and ring geometry for all instances of the Ligand of Interest. In addition, ligands with molecular weight > 250 and outliers as shown on the validation Tables will also be included. For torsion angles, if less than 5% of the Mogul distribution of torsion angles is within 10 degrees of the torsion angle in question, then that torsion angle is considered an outlier. Any bond that is central to one or more torsion angles identified as an outlier by Mogul will be highlighted in the graph. For rings, the root-mean-square deviation (RMSD) between the ring in question and similar rings identified by Mogul is calculated over all ring torsion angles. If the average RMSD is greater than 60 degrees and the minimal RMSD between the ring in question and any Mogul-identified rings is also greater than 60 degrees, then that ring is considered an outlier. The outliers are highlighted in purple. The color gray indicates Mogul did not find sufficient equivalents in the CSD to analyse the geometry.





5.7 Other polymers [i](#)

There are no such residues in this entry.

5.8 Polymer linkage issues [i](#)

There are no chain breaks in this entry.

6 Fit of model and data

6.1 Protein, DNA and RNA chains

In the following table, the column labelled ‘#RSRZ> 2’ contains the number (and percentage) of RSRZ outliers, followed by percent RSRZ outliers for the chain as percentile scores relative to all X-ray entries and entries of similar resolution. The OWAB column contains the minimum, median, 95th percentile and maximum values of the occupancy-weighted average B-factor per residue. The column labelled ‘Q< 0.9’ lists the number of (and percentage) of residues with an average occupancy less than 0.9.

Mol	Chain	Analysed	<RSRZ>	#RSRZ>2	OWAB(Å ²)	Q<0.9
1	A	166/173 (95%)	0.32	2 (1%) 79 81	14, 21, 34, 39	0
1	B	166/173 (95%)	0.30	1 (0%) 89 90	18, 25, 38, 44	0
2	C	97/117 (82%)	0.09	5 (5%) 27 30	17, 24, 47, 55	0
2	D	81/117 (69%)	2.46	47 (58%) 0 0	36, 62, 75, 85	0
All	All	510/580 (87%)	0.61	55 (10%) 5 6	14, 25, 67, 85	0

All (55) RSRZ outliers are listed below:

Mol	Chain	Res	Type	RSRZ
2	D	2190	LEU	6.6
2	D	2177	SER	6.5
2	D	2193	VAL	6.0
2	D	2176	LEU	5.8
2	C	2196	ASP	5.3
2	D	2211	VAL	5.3
2	D	2209	GLN	5.3
2	D	2208	SER	5.0
2	D	2158	VAL	4.8
2	D	2231	PHE	4.8
2	D	2178	ILE	4.8
2	D	2218	VAL	4.7
2	D	2213	LEU	4.6
2	D	2179	LEU	4.4
2	D	2180	SER	4.4
2	D	2189	LEU	4.2
2	D	2232	ILE	4.0
2	D	2235	LEU	3.9
2	D	2137	PHE	3.8
2	D	2212	LEU	3.7
2	D	2217	CYS	3.7

Continued on next page...

Continued from previous page...

Mol	Chain	Res	Type	RSRZ
2	D	2234	LYS	3.6
2	D	2192	GLU	3.6
2	D	2156	PRO	3.6
2	D	2181	ASN	3.4
2	D	2164	VAL	3.3
2	D	2210	ARG	3.3
2	D	2219	PHE	3.2
2	D	2188	VAL	3.1
2	D	2136	SER	3.0
2	D	2134	GLU	3.0
2	D	2191	GLU	2.9
2	D	2157	ARG	2.9
2	D	2159	SER	2.8
2	D	2138	PHE	2.8
2	C	2238	GLN	2.8
2	D	2171	LYS	2.6
2	C	2239	VAL	2.6
2	D	2160	THR	2.5
2	D	2233	LEU	2.5
2	D	2143	ASP	2.5
1	A	33	ASP	2.4
2	D	2230	LYS	2.4
1	A	114	VAL	2.3
2	D	2163	ASP	2.3
2	C	2207	SER	2.3
2	D	2155	ALA	2.3
2	D	2185	SER	2.3
2	D	2174	TYR	2.2
1	B	27	HIS	2.2
2	D	2236	LYS	2.2
2	C	2194	VAL	2.1
2	D	2139	VAL	2.1
2	D	2150	ARG	2.1
2	D	2187	TYR	2.0

6.2 Non-standard residues in protein, DNA, RNA chains [i](#)

There are no non-standard protein/DNA/RNA residues in this entry.

6.3 Carbohydrates

There are no carbohydrates in this entry.

6.4 Ligands

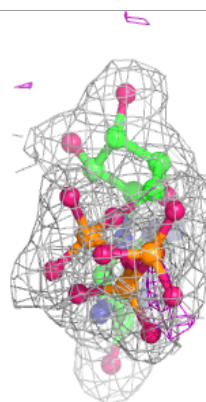
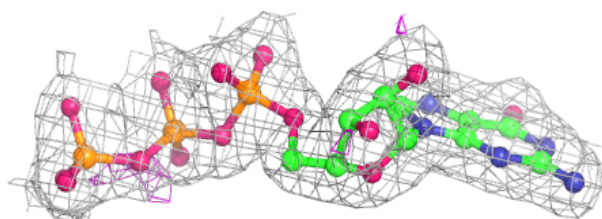
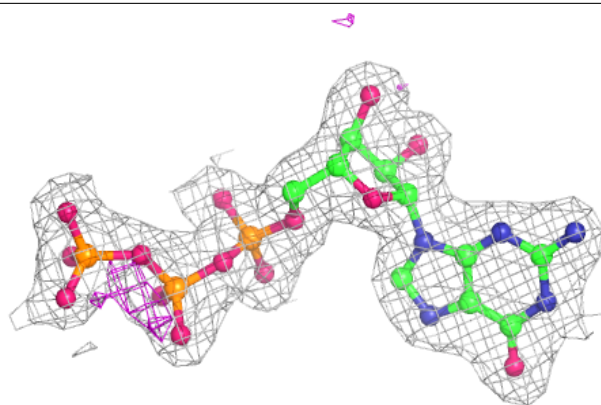
In the following table, the Atoms column lists the number of modelled atoms in the group and the number defined in the chemical component dictionary. The B-factors column lists the minimum, median, 95th percentile and maximum values of B factors of atoms in the group. The column labelled 'Q< 0.9' lists the number of atoms with occupancy less than 0.9.

Mol	Type	Chain	Res	Atoms	RSCC	RSR	B-factors(\AA^2)	Q<0.9
5	GOL	A	1169	6/6	0.56	0.26	54,54,55,55	0
5	GOL	C	3240	6/6	0.76	0.56	42,50,54,58	0
5	GOL	A	1170	6/6	0.84	0.16	36,40,40,42	0
5	GOL	B	1169	6/6	0.91	0.19	33,36,36,40	0
4	MG	B	1168	1/1	0.98	0.09	24,24,24,24	0
3	GTP	B	1167	32/32	0.98	0.08	21,24,27,28	0
3	GTP	A	1167	32/32	0.99	0.13	13,17,19,20	0
4	MG	A	1168	1/1	0.99	0.14	18,18,18,18	0

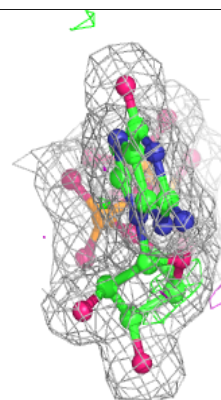
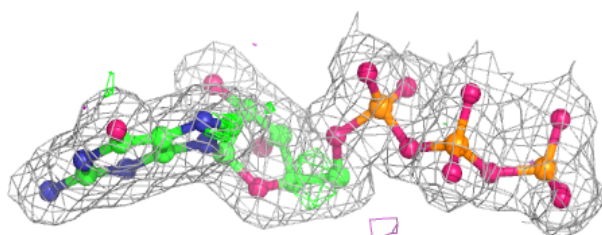
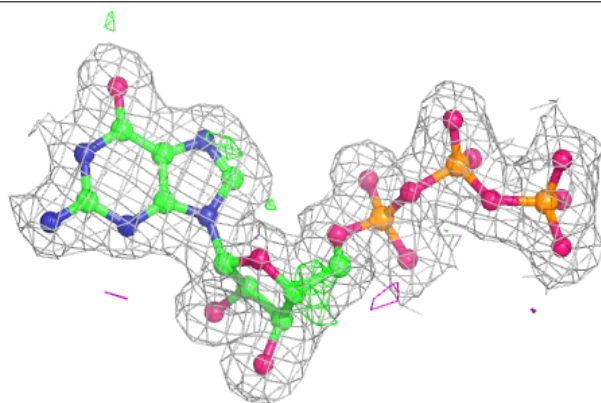
The following is a graphical depiction of the model fit to experimental electron density of all instances of the Ligand of Interest. In addition, ligands with molecular weight > 250 and outliers as shown on the geometry validation Tables will also be included. Each fit is shown from different orientation to approximate a three-dimensional view.

Electron density around GTP B 1167:

$2mF_o-DF_c$ (at 0.7 rmsd) in gray
 mF_o-DF_c (at 3 rmsd) in purple (negative)
and green (positive)

**Electron density around GTP A 1167:**

$2mF_o-DF_c$ (at 0.7 rmsd) in gray
 mF_o-DF_c (at 3 rmsd) in purple (negative)
and green (positive)



6.5 Other polymers

There are no such residues in this entry.