



Full wwPDB X-ray Structure Validation Report ⓘ

Dec 2, 2023 – 06:01 pm GMT

PDB ID : 2C36
Title : Structure of unliganded HSV gD reveals a mechanism for receptor- mediated activation of virus entry
Authors : Krummenacher, C.; Supekar, V.M.; Whitbeck, J.C.; Lazear, E.; Connolly, S.A.; Eisenberg, R.J.; Cohen, G.H.; Wiley, D.C.; Carfi, A.
Deposited on : 2005-10-04
Resolution : 2.11 Å(reported)

This is a Full wwPDB X-ray Structure Validation Report for a publicly released PDB entry.

We welcome your comments at validation@mail.wwpdb.org

A user guide is available at

<https://www.wwpdb.org/validation/2017/XrayValidationReportHelp>

with specific help available everywhere you see the ⓘ symbol.

The types of validation reports are described at

<http://www.wwpdb.org/validation/2017/FAQs#types>.

The following versions of software and data (see [references ⓘ](#)) were used in the production of this report:

MolProbity : 4.02b-467
Mogul : 1.8.4, CSD as541be (2020)
Xtrriage (Phenix) : 1.13
EDS : 2.36
Percentile statistics : 20191225.v01 (using entries in the PDB archive December 25th 2019)
Refmac : 5.8.0158
CCP4 : 7.0.044 (Gargrove)
Ideal geometry (proteins) : Engh & Huber (2001)
Ideal geometry (DNA, RNA) : Parkinson et al. (1996)
Validation Pipeline (wwPDB-VP) : 2.36

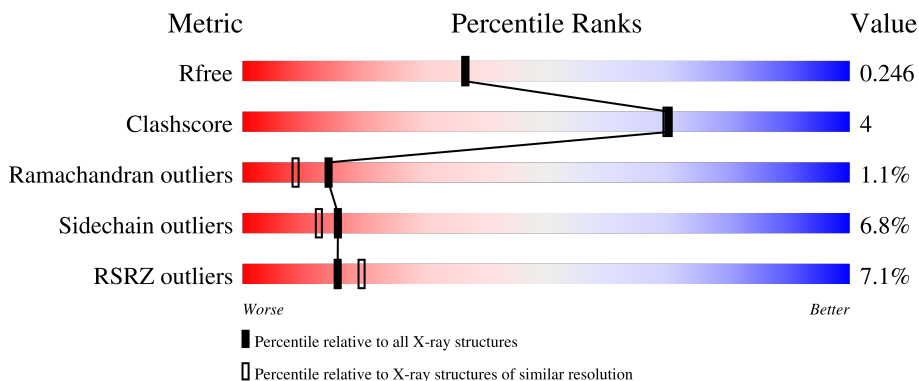
1 Overall quality at a glance

The following experimental techniques were used to determine the structure:

X-RAY DIFFRACTION

The reported resolution of this entry is 2.11 Å.

Percentile scores (ranging between 0-100) for global validation metrics of the entry are shown in the following graphic. The table shows the number of entries on which the scores are based.



Metric	Whole archive (#Entries)	Similar resolution (#Entries, resolution range(Å))
R_{free}	130704	6241 (2.14-2.10)
Clashscore	141614	6778 (2.14-2.10)
Ramachandran outliers	138981	6705 (2.14-2.10)
Sidechain outliers	138945	6706 (2.14-2.10)
RSRZ outliers	127900	6112 (2.14-2.10)

The table below summarises the geometric issues observed across the polymeric chains and their fit to the electron density. The red, orange, yellow and green segments of the lower bar indicate the fraction of residues that contain outliers for ≥ 3 , 2, 1 and 0 types of geometric quality criteria respectively. A grey segment represents the fraction of residues that are not modelled. The numeric value for each fraction is indicated below the corresponding segment, with a dot representing fractions $\leq 5\%$. The upper red bar (where present) indicates the fraction of residues that have poor fit to the electron density. The numeric value is given above the bar.

Mol	Chain	Length	Quality of chain
1	A	285	 7% 83% 11% . .
1	B	285	 7% 82% 11% . .
2	C	3	 33% 33% 33%
2	E	3	 100%
3	D	3	 100%

The following table lists non-polymeric compounds, carbohydrate monomers and non-standard residues in protein, DNA, RNA chains that are outliers for geometric or electron-density-fit criteria:

Mol	Type	Chain	Res	Chirality	Geometry	Clashes	Electron density
2	MAN	C	3	-	-	-	X
2	NAG	E	1	X	-	-	X
2	NAG	E	2	X	-	-	X
2	MAN	E	3	-	-	-	X
3	BMA	D	3	-	-	-	X

2 Entry composition [i](#)

There are 6 unique types of molecules in this entry. The entry contains 4924 atoms, of which 0 are hydrogens and 0 are deuteriums.

In the tables below, the ZeroOcc column contains the number of atoms modelled with zero occupancy, the AltConf column contains the number of residues with at least one atom in alternate conformation and the Trace column contains the number of residues modelled with at most 2 atoms.

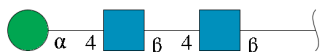
- Molecule 1 is a protein called GLYCOPROTEIN D HSV-1.

Mol	Chain	Residues	Atoms					ZeroOcc	AltConf	Trace
			Total	C	N	O	S			
1	A	274	2145	1376	360	398	11	0	1	0
1	B	274	2149	1378	362	398	11	0	2	0

There are 2 discrepancies between the modelled and reference sequences:

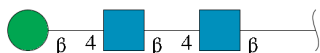
Chain	Residue	Modelled	Actual	Comment	Reference
A	307	CYS	HIS	engineered mutation	UNP P57083
B	307	CYS	HIS	engineered mutation	UNP P57083

- Molecule 2 is an oligosaccharide called alpha-D-mannopyranose-(1-4)-2-acetamido-2-deoxy-beta-D-glucopyranose-(1-4)-2-acetamido-2-deoxy-beta-D-glucopyranose.



Mol	Chain	Residues	Atoms				ZeroOcc	AltConf	Trace
			Total	C	N	O			
2	C	3	39	22	2	15	0	0	0
2	E	3	39	22	2	15	0	0	0

- Molecule 3 is an oligosaccharide called beta-D-mannopyranose-(1-4)-2-acetamido-2-deoxy-beta-D-glucopyranose-(1-4)-2-acetamido-2-deoxy-beta-D-glucopyranose.



Mol	Chain	Residues	Atoms				ZeroOcc	AltConf	Trace
3	D	3	Total	C	N	O	0	0	0
			39	22	2	15			

- Molecule 4 is ZINC ION (three-letter code: ZN) (formula: Zn).

Mol	Chain	Residues	Atoms		ZeroOcc	AltConf
4	A	1	Total	Zn	0	0
			1	1		

- Molecule 5 is CHLORIDE ION (three-letter code: CL) (formula: Cl).

Mol	Chain	Residues	Atoms		ZeroOcc	AltConf
5	A	2	Total	Cl	0	0
			2	2		
5	B	1	Total	Cl	0	0
			1	1		

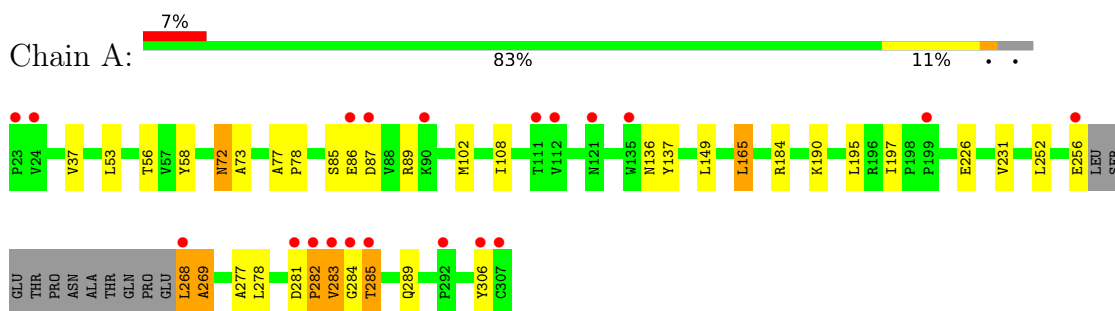
- Molecule 6 is water.

Mol	Chain	Residues	Atoms		ZeroOcc	AltConf
6	A	273	Total	O	0	0
			273	273		
6	B	236	Total	O	0	0
			236	236		

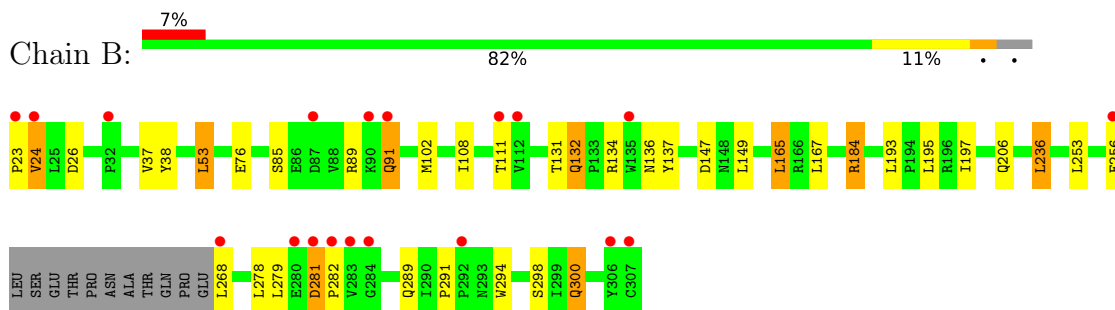
3 Residue-property plots [i](#)

These plots are drawn for all protein, RNA, DNA and oligosaccharide chains in the entry. The first graphic for a chain summarises the proportions of the various outlier classes displayed in the second graphic. The second graphic shows the sequence view annotated by issues in geometry and electron density. Residues are color-coded according to the number of geometric quality criteria for which they contain at least one outlier: green = 0, yellow = 1, orange = 2 and red = 3 or more. A red dot above a residue indicates a poor fit to the electron density ($RSRZ > 2$). Stretches of 2 or more consecutive residues without any outlier are shown as a green connector. Residues present in the sample, but not in the model, are shown in grey.

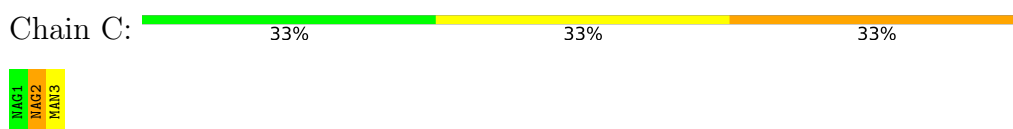
- Molecule 1: GLYCOPROTEIN D HSV-1



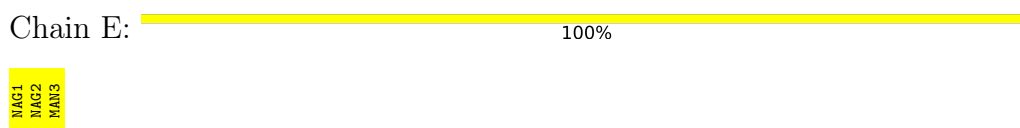
- Molecule 1: GLYCOPROTEIN D HSV-1




- Molecule 2: alpha-D-mannopyranose-(1-4)-2-acetamido-2-deoxy-beta-D-glucopyranose-(1-4)-2-acetamido-2-deoxy-beta-D-glucopyranose



- Molecule 2: alpha-D-mannopyranose-(1-4)-2-acetamido-2-deoxy-beta-D-glucopyranose-(1-4)-2-acetamido-2-deoxy-beta-D-glucopyranose



- Molecule 3: beta-D-mannopyranose-(1-4)-2-acetamido-2-deoxy-beta-D-glucopyranose-(1-4)-2-acetamido-2-deoxy-beta-D-glucopyranose

Chain D:  100%

MAG1
MAG2
BMA3

4 Data and refinement statistics

Property	Value	Source
Space group	P 21 21 21	Depositor
Cell constants a, b, c, α , β , γ	74.25Å 106.19Å 130.31Å 90.00° 90.00° 90.00°	Depositor
Resolution (Å)	81.65 – 2.11 29.83 – 2.11	Depositor EDS
% Data completeness (in resolution range)	92.4 (81.65-2.11) 92.5 (29.83-2.11)	Depositor EDS
R_{merge}	0.06	Depositor
R_{sym}	(Not available)	Depositor
$\langle I/\sigma(I) \rangle$ ¹	4.51 (at 2.10Å)	Xtrriage
Refinement program	REFMAC 5.1.24	Depositor
R, R_{free}	0.194 , 0.247 0.200 , 0.246	Depositor DCC
R_{free} test set	2817 reflections (5.06%)	wwPDB-VP
Wilson B-factor (Å ²)	34.7	Xtrriage
Anisotropy	0.761	Xtrriage
Bulk solvent k_{sol} (e/Å ³), B_{sol} (Å ²)	0.33 , 47.0	EDS
L-test for twinning ²	$\langle L \rangle = 0.50$, $\langle L^2 \rangle = 0.33$	Xtrriage
Estimated twinning fraction	No twinning to report.	Xtrriage
F_o, F_c correlation	0.95	EDS
Total number of atoms	4924	wwPDB-VP
Average B, all atoms (Å ²)	47.0	wwPDB-VP

Xtrriage's analysis on translational NCS is as follows: *The largest off-origin peak in the Patterson function is 4.27% of the height of the origin peak. No significant pseudotranslation is detected.*

¹Intensities estimated from amplitudes.

²Theoretical values of $\langle |L| \rangle$, $\langle L^2 \rangle$ for acentric reflections are 0.5, 0.333 respectively for untwinned datasets, and 0.375, 0.2 for perfectly twinned datasets.

5 Model quality [i](#)

5.1 Standard geometry [i](#)

Bond lengths and bond angles in the following residue types are not validated in this section: ZN, NAG, MAN, BMA, CL

The Z score for a bond length (or angle) is the number of standard deviations the observed value is removed from the expected value. A bond length (or angle) with $|Z| > 5$ is considered an outlier worth inspection. RMSZ is the root-mean-square of all Z scores of the bond lengths (or angles).

Mol	Chain	Bond lengths		Bond angles	
		RMSZ	$\# Z > 5$	RMSZ	$\# Z > 5$
1	A	0.56	0/2217	0.78	1/3041 (0.0%)
1	B	0.61	1/2226 (0.0%)	0.78	5/3054 (0.2%)
All	All	0.58	1/4443 (0.0%)	0.78	6/6095 (0.1%)

Chiral center outliers are detected by calculating the chiral volume of a chiral center and verifying if the center is modelled as a planar moiety or with the opposite hand. A planarity outlier is detected by checking planarity of atoms in a peptide group, atoms in a mainchain group or atoms of a sidechain that are expected to be planar.

Mol	Chain	#Chirality outliers	#Planarity outliers
1	A	0	1

All (1) bond length outliers are listed below:

Mol	Chain	Res	Type	Atoms	Z	Observed(Å)	Ideal(Å)
1	B	91	GLN	CA-CB	10.92	1.77	1.53

All (6) bond angle outliers are listed below:

Mol	Chain	Res	Type	Atoms	Z	Observed(°)	Ideal(°)
1	B	147	ASP	CB-CG-OD2	7.62	125.16	118.30
1	B	91	GLN	CB-CA-C	5.95	122.30	110.40
1	B	281	ASP	CB-CG-OD2	5.57	123.31	118.30
1	A	87	ASP	CB-CG-OD2	5.55	123.29	118.30
1	B	91	GLN	N-CA-CB	-5.49	100.72	110.60
1	B	26	ASP	CB-CG-OD2	5.47	123.22	118.30

There are no chirality outliers.

All (1) planarity outliers are listed below:

Mol	Chain	Res	Type	Group
1	A	281	ASP	Peptide

5.2 Too-close contacts [i](#)

In the following table, the Non-H and H(model) columns list the number of non-hydrogen atoms and hydrogen atoms in the chain respectively. The H(added) column lists the number of hydrogen atoms added and optimized by MolProbity. The Clashes column lists the number of clashes within the asymmetric unit, whereas Symm-Clashes lists symmetry-related clashes.

Mol	Chain	Non-H	H(model)	H(added)	Clashes	Symm-Clashes
1	A	2145	0	2100	12	0
1	B	2149	0	2104	19	0
2	C	39	0	34	1	0
2	E	39	0	34	0	0
3	D	39	0	34	0	0
4	A	1	0	0	0	0
5	A	2	0	0	0	0
5	B	1	0	0	0	0
6	A	273	0	0	0	0
6	B	236	0	0	1	0
All	All	4924	0	4306	31	0

The all-atom clashscore is defined as the number of clashes found per 1000 atoms (including hydrogen atoms). The all-atom clashscore for this structure is 4.

All (31) close contacts within the same asymmetric unit are listed below, sorted by their clash magnitude.

Atom-1	Atom-2	Interatomic distance (Å)	Clash overlap (Å)
1:B:91:GLN:CA	1:B:91:GLN:CB	1.78	1.57
1:B:38:TYR:HA	1:B:132:GLN:HE22	1.51	0.74
1:B:91:GLN:CB	1:B:91:GLN:N	2.50	0.74
1:B:23:PRO:O	1:B:24:VAL:HG12	1.92	0.69
1:B:91:GLN:CA	1:B:91:GLN:CG	2.70	0.67
1:A:72:ASN:HD22	1:A:73:ALA:H	1.44	0.64
1:B:298:SER:HB3	1:B:300:GLN:HE22	1.63	0.64
1:A:282:PRO:HD2	1:A:283:VAL:HG22	1.82	0.60
1:B:193:LEU:CD2	1:B:236:LEU:HD13	2.34	0.57
1:B:24:VAL:HG13	1:B:24:VAL:O	2.08	0.54
1:A:85:SER:O	1:A:89:ARG:HG3	2.11	0.50
1:B:291:PRO:HB2	1:B:294:TRP:CD1	2.48	0.49
1:B:37:VAL:O	1:B:131:THR:HA	2.14	0.47

Continued on next page...

Continued from previous page...

Atom-1	Atom-2	Interatomic distance (Å)	Clash overlap (Å)
1:A:56:THR:HG1	1:A:58:TYR:HE1	1.64	0.45
1:A:108:ILE:HD13	1:A:197:ILE:HG21	1.99	0.45
1:B:38:TYR:HA	1:B:132:GLN:NE2	2.27	0.44
1:A:136:ASN:HB3	1:A:137:TYR:CD1	2.52	0.44
1:A:190:LYS:HD3	1:A:277:ALA:HB1	1.99	0.43
1:B:102:MET:SD	1:B:165:LEU:HD22	2.58	0.43
1:B:111:THR:HA	1:B:134:ARG:O	2.19	0.43
1:A:77:ALA:HB3	1:A:78:PRO:HD3	2.01	0.42
1:B:136:ASN:HB3	1:B:137:TYR:CD1	2.55	0.42
1:B:184:ARG:HD3	6:B:2150:HOH:O	2.20	0.42
1:A:102:MET:SD	1:A:165:LEU:HD22	2.60	0.42
1:B:53:LEU:HD21	1:B:76:GLU:HG3	2.00	0.42
1:B:85:SER:O	1:B:89:ARG:HG3	2.20	0.41
1:A:268:LEU:O	1:A:269:ALA:HB3	2.20	0.41
1:B:167:LEU:C	1:B:167:LEU:HD23	2.41	0.41
1:A:306:TYR:CE1	2:C:2:NAG:C8	3.04	0.40
1:B:108:ILE:HD13	1:B:197:ILE:HG21	2.03	0.40

There are no symmetry-related clashes.

5.3 Torsion angles [i](#)

5.3.1 Protein backbone [i](#)

In the following table, the Percentiles column shows the percent Ramachandran outliers of the chain as a percentile score with respect to all X-ray entries followed by that with respect to entries of similar resolution.

The Analysed column shows the number of residues for which the backbone conformation was analysed, and the total number of residues.

Mol	Chain	Analysed	Favoured	Allowed	Outliers	Percentiles	
1	A	271/285 (95%)	257 (95%)	10 (4%)	4 (2%)	10	5
1	B	272/285 (95%)	259 (95%)	11 (4%)	2 (1%)	22	17
All	All	543/570 (95%)	516 (95%)	21 (4%)	6 (1%)	14	9

All (6) Ramachandran outliers are listed below:

Mol	Chain	Res	Type
1	B	24	VAL

Continued on next page...

Continued from previous page...

Mol	Chain	Res	Type
1	A	282	PRO
1	A	285	THR
1	B	282	PRO
1	A	269	ALA
1	A	284	GLY

5.3.2 Protein sidechains [i](#)

In the following table, the Percentiles column shows the percent sidechain outliers of the chain as a percentile score with respect to all X-ray entries followed by that with respect to entries of similar resolution.

The Analysed column shows the number of residues for which the sidechain conformation was analysed, and the total number of residues.

Mol	Chain	Analysed	Rotameric	Outliers	Percentiles	
1	A	236/245 (96%)	220 (93%)	16 (7%)	16	12
1	B	237/245 (97%)	221 (93%)	16 (7%)	16	12
All	All	473/490 (96%)	441 (93%)	32 (7%)	16	12

All (32) residues with a non-rotameric sidechain are listed below:

Mol	Chain	Res	Type
1	A	37	VAL
1	A	53	LEU
1	A	72	ASN
1	A	86	GLU
1	A	149	LEU
1	A	165	LEU
1	A	184	ARG
1	A	195	LEU
1	A	231	VAL
1	A	252	LEU
1	A	256	GLU
1	A	268	LEU
1	A	278	LEU
1	A	283	VAL
1	A	285	THR
1	A	289	GLN
1	B	53	LEU
1	B	132	GLN

Continued on next page...

Continued from previous page...

Mol	Chain	Res	Type
1	B	149	LEU
1	B	165	LEU
1	B	184	ARG
1	B	195	LEU
1	B	206	GLN
1	B	236	LEU
1	B	253	LEU
1	B	256	GLU
1	B	268	LEU
1	B	278	LEU
1	B	279	LEU
1	B	281	ASP
1	B	289	GLN
1	B	300	GLN

Sometimes sidechains can be flipped to improve hydrogen bonding and reduce clashes. All (5) such sidechains are listed below:

Mol	Chain	Res	Type
1	A	72	ASN
1	A	148	ASN
1	B	132	GLN
1	B	148	ASN
1	B	300	GLN

5.3.3 RNA [i](#)

There are no RNA molecules in this entry.

5.4 Non-standard residues in protein, DNA, RNA chains [i](#)

There are no non-standard protein/DNA/RNA residues in this entry.

5.5 Carbohydrates [i](#)

9 monosaccharides are modelled in this entry.

In the following table, the Counts columns list the number of bonds (or angles) for which Mogul statistics could be retrieved, the number of bonds (or angles) that are observed in the model and the number of bonds (or angles) that are defined in the Chemical Component Dictionary. The Link column lists molecule types, if any, to which the group is linked. The Z score for a bond

length (or angle) is the number of standard deviations the observed value is removed from the expected value. A bond length (or angle) with $|Z| > 2$ is considered an outlier worth inspection. RMSZ is the root-mean-square of all Z scores of the bond lengths (or angles).

Mol	Type	Chain	Res	Link	Bond lengths			Bond angles		
					Counts	RMSZ	# Z > 2	Counts	RMSZ	# Z > 2
2	NAG	C	1	1,2	14,14,15	0.43	0	17,19,21	1.05	0
2	NAG	C	2	2	14,14,15	0.69	0	17,19,21	1.46	2 (11%)
2	MAN	C	3	2	11,11,12	0.70	0	15,15,17	4.13	6 (40%)
3	NAG	D	1	1,3	14,14,15	0.69	0	17,19,21	1.31	2 (11%)
3	NAG	D	2	3	14,14,15	0.55	0	17,19,21	1.38	3 (17%)
3	BMA	D	3	3	11,11,12	0.72	0	15,15,17	4.11	6 (40%)
2	NAG	E	1	1,2	14,14,15	0.56	0	17,19,21	0.98	1 (5%)
2	NAG	E	2	2	14,14,15	0.69	1 (7%)	17,19,21	2.26	3 (17%)
2	MAN	E	3	2	11,11,12	0.67	0	15,15,17	4.05	6 (40%)

In the following table, the Chirals column lists the number of chiral outliers, the number of chiral centers analysed, the number of these observed in the model and the number defined in the Chemical Component Dictionary. Similar counts are reported in the Torsion and Rings columns. '-' means no outliers of that kind were identified.

Mol	Type	Chain	Res	Link	Chirals	Torsions	Rings
2	NAG	C	1	1,2	-	0/6/23/26	0/1/1/1
2	NAG	C	2	2	-	4/6/23/26	0/1/1/1
2	MAN	C	3	2	-	1/2/19/22	0/1/1/1
3	NAG	D	1	1,3	-	0/6/23/26	0/1/1/1
3	NAG	D	2	3	-	4/6/23/26	0/1/1/1
3	BMA	D	3	3	-	0/2/19/22	0/1/1/1
2	NAG	E	1	1,2	1/1/5/7	2/6/23/26	0/1/1/1
2	NAG	E	2	2	1/1/5/7	3/6/23/26	0/1/1/1
2	MAN	E	3	2	-	1/2/19/22	0/1/1/1

All (1) bond length outliers are listed below:

Mol	Chain	Res	Type	Atoms	Z	Observed(Å)	Ideal(Å)
2	E	2	NAG	C1-C2	2.19	1.55	1.52

All (29) bond angle outliers are listed below:

Mol	Chain	Res	Type	Atoms	Z	Observed(°)	Ideal(°)
3	D	3	BMA	C1-O5-C5	10.62	126.59	112.19

Continued on next page...

Continued from previous page...

Mol	Chain	Res	Type	Atoms	Z	Observed(°)	Ideal(°)
2	E	3	MAN	C1-O5-C5	10.15	125.94	112.19
2	C	3	MAN	C1-O5-C5	9.82	125.49	112.19
2	C	3	MAN	C1-C2-C3	8.78	120.45	109.67
3	D	3	BMA	C1-C2-C3	7.61	119.02	109.67
2	E	3	MAN	C1-C2-C3	7.51	118.90	109.67
2	E	2	NAG	C1-O5-C5	7.46	122.31	112.19
2	E	3	MAN	O5-C1-C2	5.06	118.59	110.77
2	E	3	MAN	C3-C4-C5	5.01	119.17	110.24
2	C	3	MAN	C3-C4-C5	4.95	119.06	110.24
3	D	3	BMA	C3-C4-C5	4.92	119.01	110.24
3	D	3	BMA	O5-C1-C2	4.70	118.02	110.77
3	D	3	BMA	C2-C3-C4	4.60	118.86	110.89
2	E	3	MAN	C2-C3-C4	4.58	118.81	110.89
2	C	3	MAN	O5-C1-C2	4.54	117.78	110.77
2	C	3	MAN	C2-C3-C4	4.09	117.96	110.89
2	C	2	NAG	O5-C1-C2	-4.03	104.93	111.29
2	E	2	NAG	O5-C5-C6	3.62	112.88	107.20
2	C	3	MAN	O5-C5-C4	3.43	119.17	110.83
2	E	3	MAN	O5-C5-C4	3.19	118.58	110.83
3	D	3	BMA	O5-C5-C4	3.08	118.31	110.83
3	D	2	NAG	C2-N2-C7	-2.67	119.10	122.90
3	D	2	NAG	O5-C5-C6	2.63	111.33	107.20
3	D	1	NAG	O5-C1-C2	-2.63	107.14	111.29
3	D	1	NAG	C1-O5-C5	2.55	115.64	112.19
2	E	1	NAG	C1-O5-C5	2.36	115.38	112.19
3	D	2	NAG	O5-C1-C2	-2.30	107.66	111.29
2	C	2	NAG	C1-O5-C5	2.10	115.04	112.19
2	E	2	NAG	C4-C3-C2	-2.02	108.06	111.02

All (2) chirality outliers are listed below:

Mol	Chain	Res	Type	Atom
2	E	1	NAG	C1
2	E	2	NAG	C1

All (15) torsion outliers are listed below:

Mol	Chain	Res	Type	Atoms
2	E	2	NAG	C8-C7-N2-C2
2	E	2	NAG	O7-C7-N2-C2
3	D	2	NAG	C8-C7-N2-C2
3	D	2	NAG	O5-C5-C6-O6

Continued on next page...

Continued from previous page...

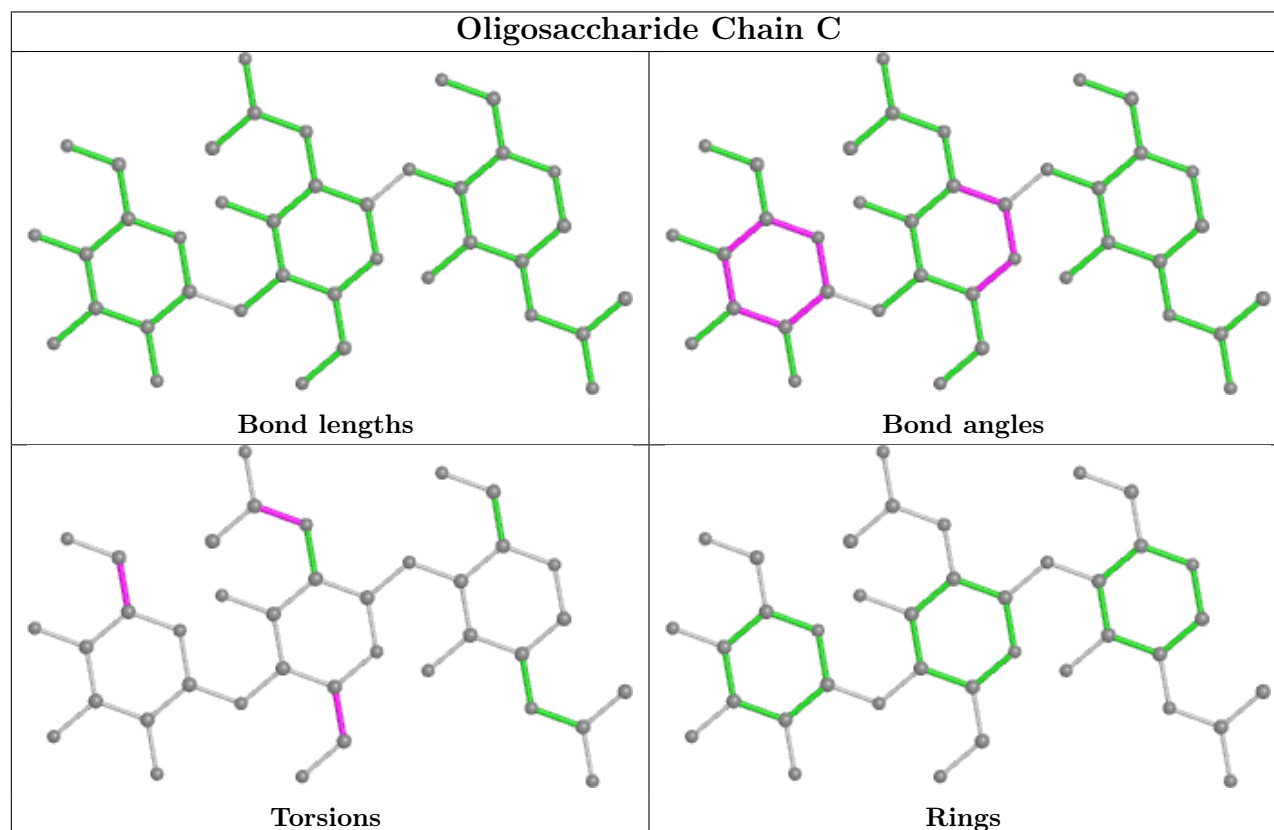
Mol	Chain	Res	Type	Atoms
3	D	2	NAG	O7-C7-N2-C2
2	C	2	NAG	C4-C5-C6-O6
3	D	2	NAG	C4-C5-C6-O6
2	C	2	NAG	C8-C7-N2-C2
2	E	1	NAG	C4-C5-C6-O6
2	E	1	NAG	O5-C5-C6-O6
2	C	2	NAG	O7-C7-N2-C2
2	E	3	MAN	O5-C5-C6-O6
2	C	2	NAG	O5-C5-C6-O6
2	C	3	MAN	O5-C5-C6-O6
2	E	2	NAG	C4-C5-C6-O6

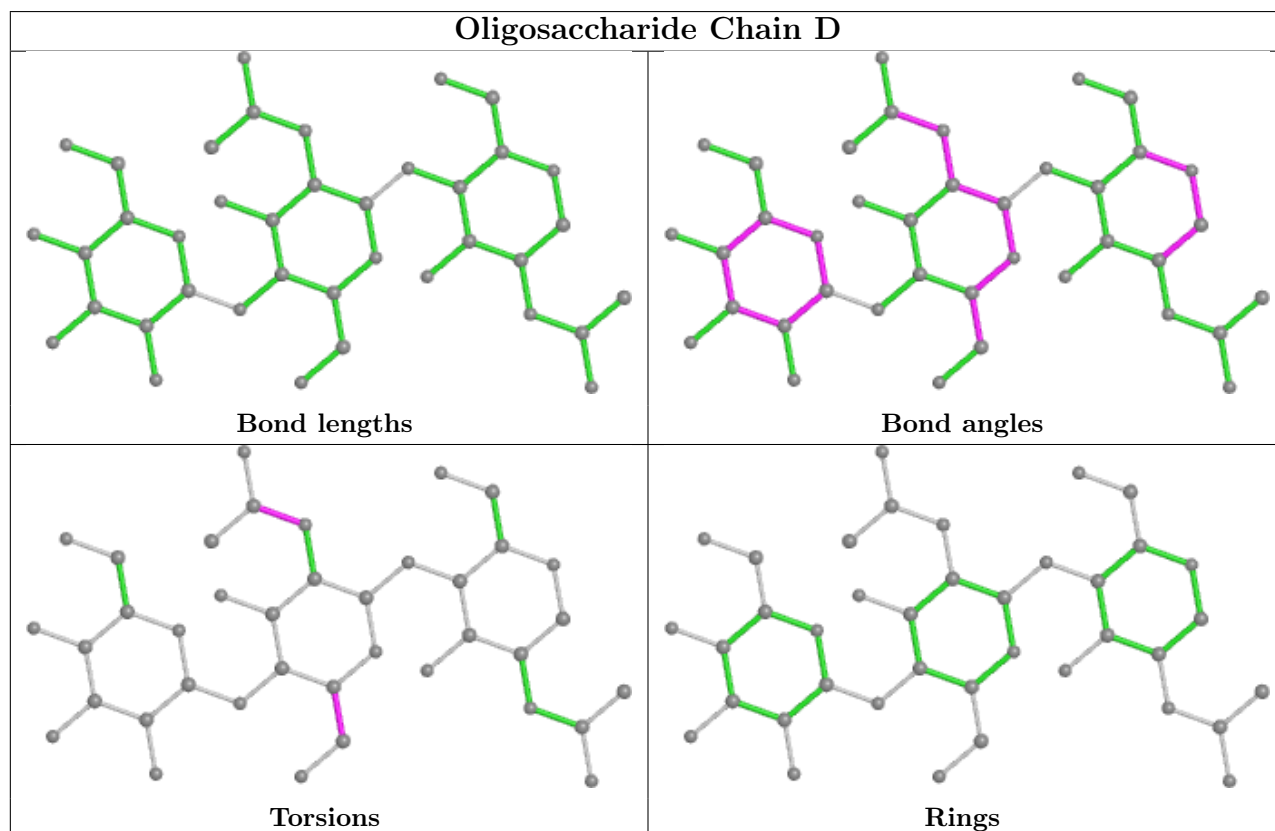
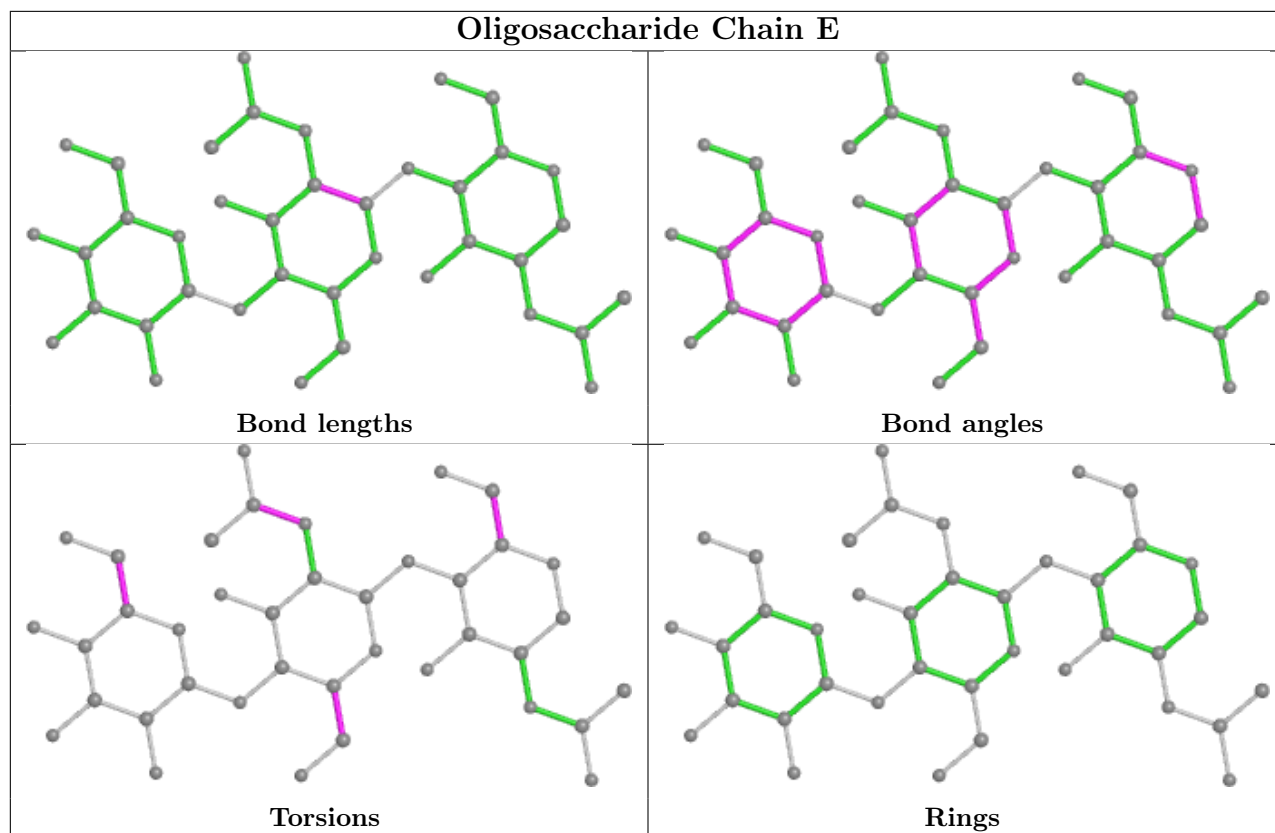
There are no ring outliers.

1 monomer is involved in 1 short contact:

Mol	Chain	Res	Type	Clashes	Symm-Clashes
2	C	2	NAG	1	0

The following is a two-dimensional graphical depiction of Mogul quality analysis of bond lengths, bond angles, torsion angles, and ring geometry for oligosaccharide.





5.6 Ligand geometry [i](#)

Of 4 ligands modelled in this entry, 4 are monoatomic - leaving 0 for Mogul analysis.

There are no bond length outliers.

There are no bond angle outliers.

There are no chirality outliers.

There are no torsion outliers.

There are no ring outliers.

No monomer is involved in short contacts.

5.7 Other polymers [i](#)

There are no such residues in this entry.

5.8 Polymer linkage issues [i](#)

There are no chain breaks in this entry.

6 Fit of model and data

6.1 Protein, DNA and RNA chains

In the following table, the column labelled ‘#RSRZ > 2’ contains the number (and percentage) of RSRZ outliers, followed by percent RSRZ outliers for the chain as percentile scores relative to all X-ray entries and entries of similar resolution. The OWAB column contains the minimum, median, 95th percentile and maximum values of the occupancy-weighted average B-factor per residue. The column labelled ‘Q < 0.9’ lists the number of (and percentage) of residues with an average occupancy less than 0.9.

Mol	Chain	Analysed	<RSRZ>	#RSRZ>2	OWAB(Å ²)	Q<0.9
1	A	274/285 (96%)	0.08	20 (7%) 15 19	34, 42, 68, 78	0
1	B	274/285 (96%)	0.14	19 (6%) 16 20	33, 44, 68, 77	0
All	All	548/570 (96%)	0.11	39 (7%) 16 19	33, 43, 68, 78	0

All (39) RSRZ outliers are listed below:

Mol	Chain	Res	Type	RSRZ
1	B	283	VAL	7.6
1	A	283	VAL	6.3
1	A	24	VAL	5.4
1	B	24	VAL	5.3
1	B	282	PRO	5.3
1	B	256	GLU	5.1
1	B	23	PRO	5.1
1	B	268	LEU	5.1
1	A	23	PRO	4.7
1	A	268	LEU	4.6
1	A	281	ASP	4.3
1	B	284	GLY	4.3
1	A	306	TYR	4.2
1	A	282	PRO	4.0
1	B	91	GLN	4.0
1	B	90	LYS	3.6
1	A	285	THR	3.6
1	A	256	GLU	3.6
1	A	284	GLY	3.2
1	B	306	TYR	2.9
1	A	112	VAL	2.6
1	B	307	CYS	2.6
1	B	32	PRO	2.4
1	A	121	ASN	2.4

Continued on next page...

Continued from previous page...

Mol	Chain	Res	Type	RSRZ
1	A	87	ASP	2.4
1	B	87	ASP	2.4
1	B	280	GLU	2.4
1	B	112	VAL	2.3
1	B	292	PRO	2.3
1	A	135	TRP	2.2
1	A	199	PRO	2.2
1	B	111	THR	2.2
1	A	111	THR	2.1
1	A	307	CYS	2.1
1	A	86	GLU	2.1
1	B	135	TRP	2.1
1	A	90	LYS	2.1
1	B	281	ASP	2.1
1	A	292	PRO	2.0

6.2 Non-standard residues in protein, DNA, RNA chains [i](#)

There are no non-standard protein/DNA/RNA residues in this entry.

6.3 Carbohydrates [i](#)

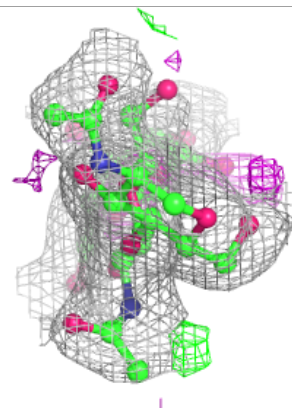
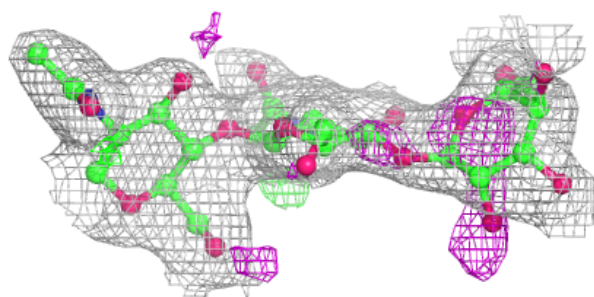
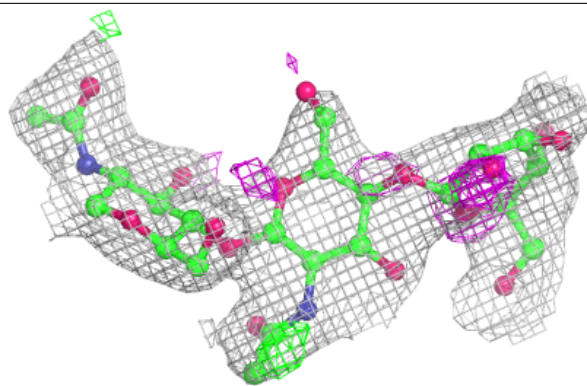
In the following table, the Atoms column lists the number of modelled atoms in the group and the number defined in the chemical component dictionary. The B-factors column lists the minimum, median, 95th percentile and maximum values of B factors of atoms in the group. The column labelled 'Q< 0.9' lists the number of atoms with occupancy less than 0.9.

Mol	Type	Chain	Res	Atoms	RSCC	RSR	B-factors(Å ²)	Q<0.9
2	MAN	E	3	11/12	0.57	0.59	107,108,108,108	0
2	NAG	E	1	14/15	0.71	0.46	88,94,95,99	0
2	MAN	C	3	11/12	0.74	0.45	79,80,81,81	0
2	NAG	E	2	14/15	0.76	0.64	102,104,105,106	0
3	BMA	D	3	11/12	0.76	0.47	79,81,82,83	0
3	NAG	D	2	14/15	0.84	0.29	68,72,73,77	0
2	NAG	C	2	14/15	0.89	0.31	67,69,73,76	0
3	NAG	D	1	14/15	0.91	0.10	54,57,59,64	0
2	NAG	C	1	14/15	0.92	0.10	51,53,58,63	0

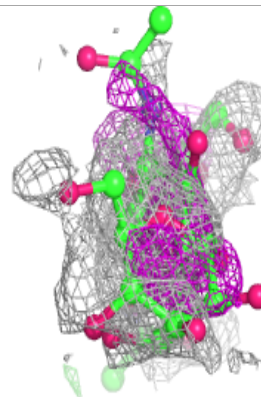
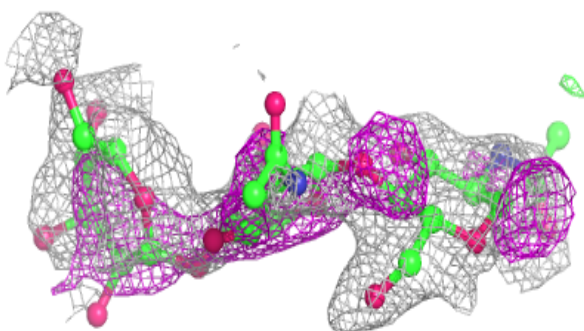
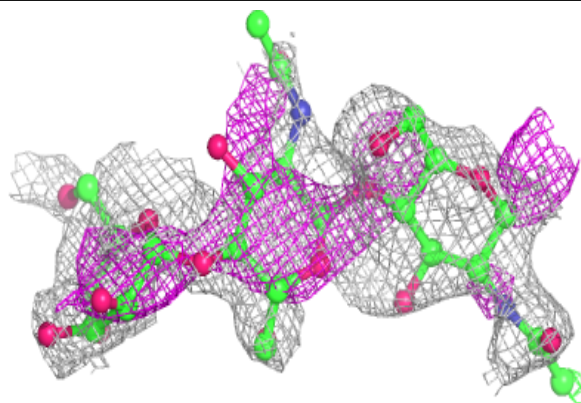
The following is a graphical depiction of the model fit to experimental electron density for oligosaccharide. Each fit is shown from different orientation to approximate a three-dimensional view.

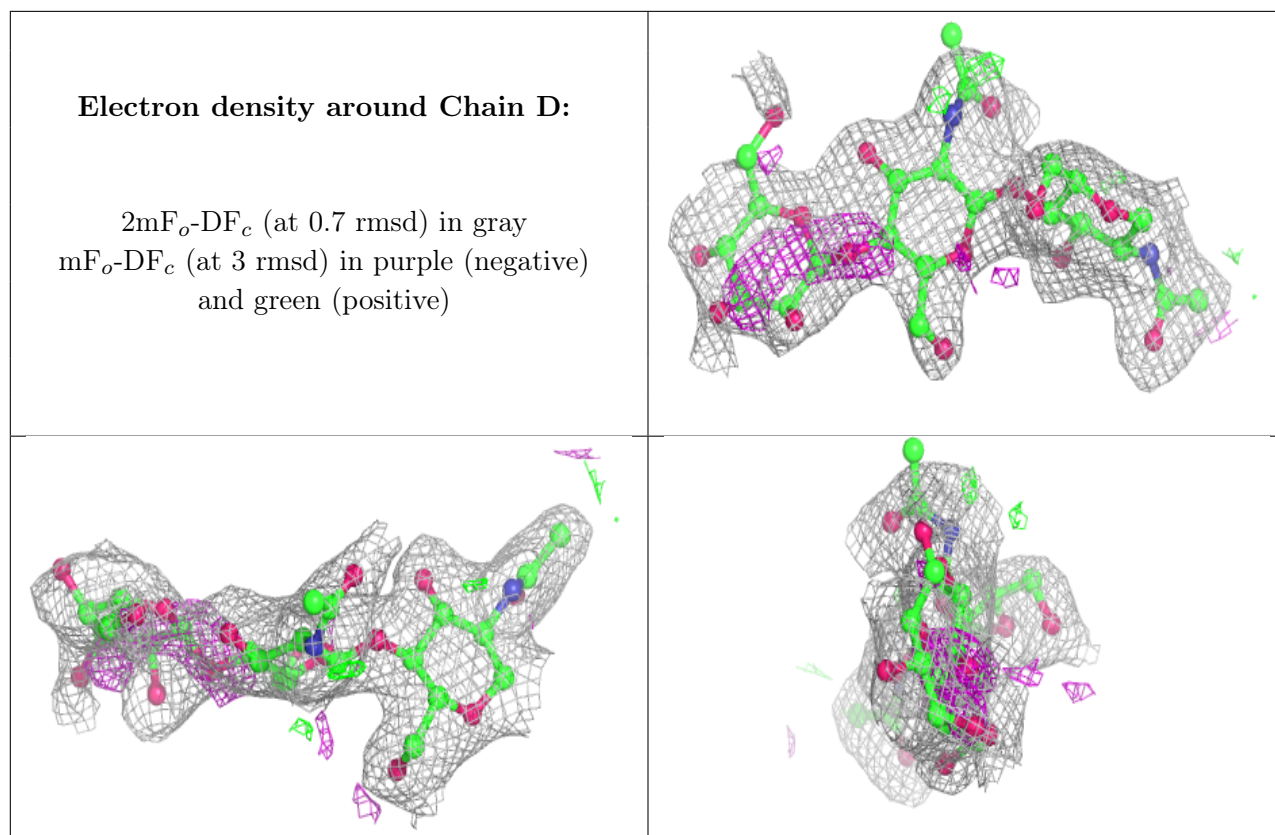
Electron density around Chain C:

$2mF_o-DF_c$ (at 0.7 rmsd) in gray
 mF_o-DF_c (at 3 rmsd) in purple (negative)
and green (positive)

**Electron density around Chain E:**

$2mF_o-DF_c$ (at 0.7 rmsd) in gray
 mF_o-DF_c (at 3 rmsd) in purple (negative)
and green (positive)





6.4 Ligands [i](#)

In the following table, the Atoms column lists the number of modelled atoms in the group and the number defined in the chemical component dictionary. The B-factors column lists the minimum, median, 95th percentile and maximum values of B factors of atoms in the group. The column labelled 'Q < 0.9' lists the number of atoms with occupancy less than 0.9.

Mol	Type	Chain	Res	Atoms	RSCC	RSR	B-factors(\AA^2)	Q<0.9
5	CL	A	1312	1/1	0.98	0.04	40,40,40,40	0
4	ZN	A	1311	1/1	0.99	0.08	38,38,38,38	0
5	CL	B	1314	1/1	0.99	0.04	37,37,37,37	0
5	CL	A	1313	1/1	1.00	0.06	38,38,38,38	0

6.5 Other polymers [i](#)

There are no such residues in this entry.