



Full wwPDB X-ray Structure Validation Report ⓘ

Sep 13, 2020 – 10:05 AM BST

PDB ID : 1YI8
Title : Crystal structure of tryptophanyl trRNA synthetase II from *Deinococcus radiodurans* in complex with L-Trp
Authors : Buddha, M.R.; Crane, B.R.
Deposited on : 2005-01-11
Resolution : 2.10 Å(reported)

This is a Full wwPDB X-ray Structure Validation Report for a publicly released PDB entry.

We welcome your comments at validation@mail.wwpdb.org

A user guide is available at

<https://www.wwpdb.org/validation/2017/XrayValidationReportHelp>

with specific help available everywhere you see the ⓘ symbol.

The following versions of software and data (see [references ⓘ](#)) were used in the production of this report:

MolProbity : 4.02b-467
Mogul : 1.8.5 (274361), CSD as541be (2020)
Xtrriage (Phenix) : 1.13
EDS : **FAILED**
Percentile statistics : 20191225.v01 (using entries in the PDB archive December 25th 2019)
Ideal geometry (proteins) : Engh & Huber (2001)
Ideal geometry (DNA, RNA) : Parkinson et al. (1996)
Validation Pipeline (wwPDB-VP) : 2.14.4.dev1

2 Entry composition [i](#)

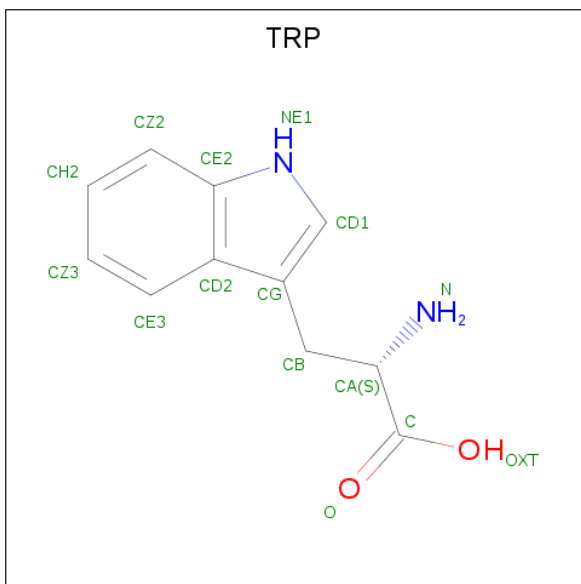
There are 3 unique types of molecules in this entry. The entry contains 8661 atoms, of which 0 are hydrogens and 0 are deuteriums.

In the tables below, the ZeroOcc column contains the number of atoms modelled with zero occupancy, the AltConf column contains the number of residues with at least one atom in alternate conformation and the Trace column contains the number of residues modelled with at most 2 atoms.

- Molecule 1 is a protein called tryptophanyl-tRNA synthetase.

Mol	Chain	Residues	Atoms					ZeroOcc	AltConf	Trace
			Total	C	N	O	S			
1	B	331	Total 2544	C 1599	N 468	O 471	S 6	2	0	0
1	A	331	Total 2511	C 1581	N 457	O 467	S 6	0	0	0
1	C	331	Total 2532	C 1593	N 462	O 471	S 6	0	0	0

- Molecule 2 is TRYPTOPHAN (three-letter code: TRP) (formula: $C_{11}H_{12}N_2O_2$).



Mol	Chain	Residues	Atoms				ZeroOcc	AltConf
			Total	C	N	O		
2	C	1	Total 15	C 11	N 2	O 2	0	0

- Molecule 3 is water.

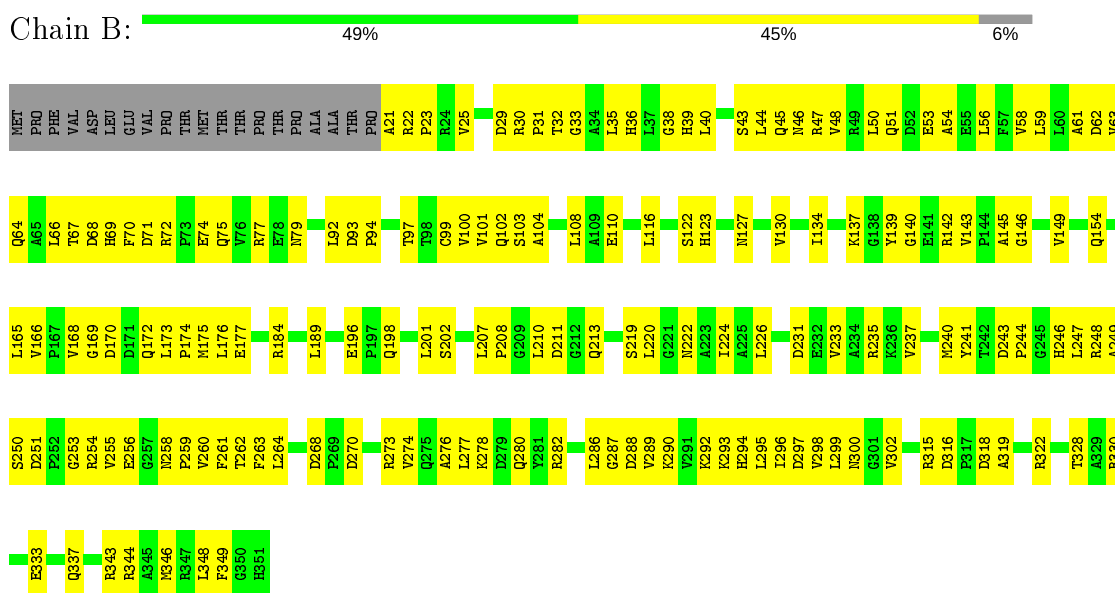
Mol	Chain	Residues	Atoms		ZeroOcc	AltConf
3	B	308	Total 308	O 308	0	0
3	A	375	Total 375	O 375	0	0
3	C	376	Total 376	O 376	0	0

3 Residue-property plots

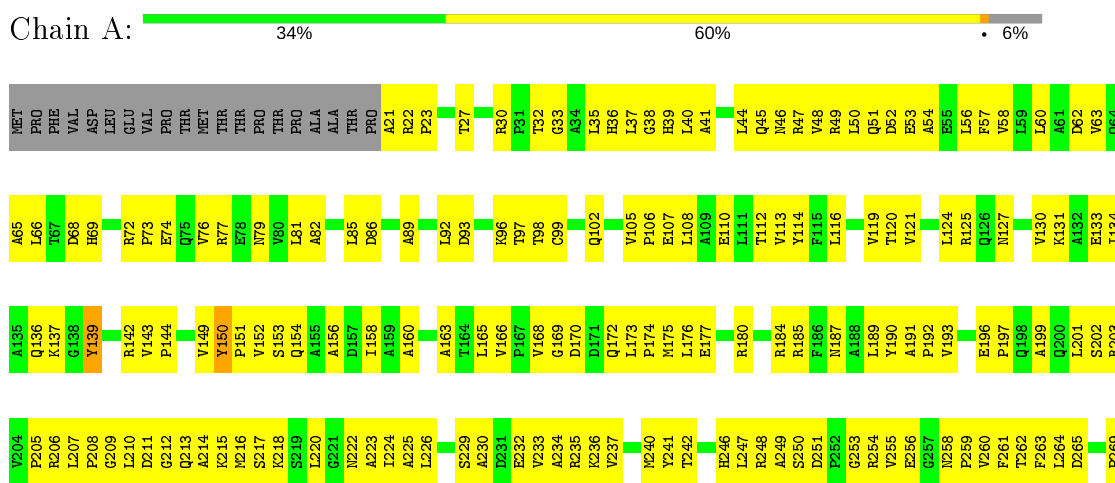
These plots are drawn for all protein, RNA, DNA and oligosaccharide chains in the entry. The first graphic for a chain summarises the proportions of the various outlier classes displayed in the second graphic. The second graphic shows the sequence view annotated by issues in geometry. Residues are color-coded according to the number of geometric quality criteria for which they contain at least one outlier: green = 0, yellow = 1, orange = 2 and red = 3 or more. Stretches of 2 or more consecutive residues without any outlier are shown as a green connector. Residues present in the sample, but not in the model, are shown in grey.

Note EDS failed to run properly.

- Molecule 1: tryptophanyl-tRNA synthetase

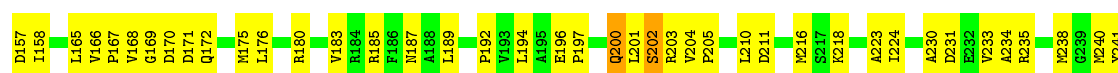


- Molecule 1: tryptophanyl-tRNA synthetase





• Molecule 1: tryptophanyl-tRNA synthetase



4 Data and refinement statistics

EDS failed to run properly - this section is therefore incomplete.

Property	Value	Source
Space group	C 1 2 1	Depositor
Cell constants a, b, c, α , β , γ	211.80Å 58.50Å 88.90Å 90.00° 100.72° 90.00°	Depositor
Resolution (Å)	50.00 – 2.10	Depositor
% Data completeness (in resolution range)	88.7 (50.00-2.10)	Depositor
R_{merge}	0.08	Depositor
R_{sym}	0.06	Depositor
$\langle I/\sigma(I) \rangle$ ¹	1.45 (at 2.12Å)	Xtrriage
Refinement program	CNS	Depositor
R, R_{free}	0.260 , 0.280	Depositor
Wilson B-factor (Å ²)	35.9	Xtrriage
Anisotropy	0.313	Xtrriage
L-test for twinning ²	$\langle L \rangle = 0.49$, $\langle L^2 \rangle = 0.33$	Xtrriage
Estimated twinning fraction	No twinning to report.	Xtrriage
Total number of atoms	8661	wwPDB-VP
Average B, all atoms (Å ²)	52.0	wwPDB-VP

Xtrriage's analysis on translational NCS is as follows: *The largest off-origin peak in the Patterson function is 4.28% of the height of the origin peak. No significant pseudotranslation is detected.*

¹ Intensities estimated from amplitudes.

² Theoretical values of $\langle |L| \rangle$, $\langle L^2 \rangle$ for acentric reflections are 0.5, 0.333 respectively for untwinned datasets, and 0.375, 0.2 for perfectly twinned datasets.

5 Model quality [i](#)

5.1 Standard geometry [i](#)

The Z score for a bond length (or angle) is the number of standard deviations the observed value is removed from the expected value. A bond length (or angle) with $|Z| > 5$ is considered an outlier worth inspection. RMSZ is the root-mean-square of all Z scores of the bond lengths (or angles).

Mol	Chain	Bond lengths		Bond angles	
		RMSZ	# Z >5	RMSZ	# Z >5
1	A	0.36	0/2558	0.68	0/3478
1	B	0.39	0/2591	0.68	0/3519
1	C	0.48	0/2579	0.73	3/3505 (0.1%)
All	All	0.41	0/7728	0.70	3/10502 (0.0%)

Chiral center outliers are detected by calculating the chiral volume of a chiral center and verifying if the center is modelled as a planar moiety or with the opposite hand. A planarity outlier is detected by checking planarity of atoms in a peptide group, atoms in a mainchain group or atoms of a sidechain that are expected to be planar.

Mol	Chain	#Chirality outliers	#Planarity outliers
1	A	0	2

There are no bond length outliers.

All (3) bond angle outliers are listed below:

Mol	Chain	Res	Type	Atoms	Z	Observed(°)	Ideal(°)
1	C	200	GLN	N-CA-C	-5.49	96.19	111.00
1	C	202	SER	N-CA-C	5.07	124.69	111.00
1	C	169	GLY	N-CA-C	-5.06	100.45	113.10

There are no chirality outliers.

All (2) planarity outliers are listed below:

Mol	Chain	Res	Type	Group
1	A	139	TYR	Sidechain
1	A	150	TYR	Sidechain

5.2 Too-close contacts i

In the following table, the Non-H and H(model) columns list the number of non-hydrogen atoms and hydrogen atoms in the chain respectively. The H(added) column lists the number of hydrogen atoms added and optimized by MolProbity. The Clashes column lists the number of clashes within the asymmetric unit, whereas Symm-Clashes lists symmetry related clashes.

Mol	Chain	Non-H	H(model)	H(added)	Clashes	Symm-Clashes
1	A	2511	0	2507	297	15
1	B	2544	0	2568	206	7
1	C	2532	0	2546	197	8
2	C	15	0	9	4	0
3	A	375	0	0	16	6
3	B	308	0	0	7	6
3	C	376	0	0	16	18
All	All	8661	0	7630	684	32

The all-atom clashscore is defined as the number of clashes found per 1000 atoms (including hydrogen atoms). The all-atom clashscore for this structure is 45.

All (684) close contacts within the same asymmetric unit are listed below, sorted by their clash magnitude.

Atom-1	Atom-2	Interatomic distance (Å)	Clash overlap (Å)
1:A:168:VAL:HG23	1:A:172:GLN:HB2	1.20	1.15
1:A:226:LEU:HB3	1:A:306:ILE:HD11	1.34	1.09
1:A:207:LEU:HD23	1:A:216:MET:HE1	1.38	1.04
1:C:180:ARG:HH11	1:C:180:ARG:HG3	1.21	1.03
1:B:51:GLN:HE21	1:B:97:THR:HG22	1.18	1.02
1:C:120:THR:HG23	1:C:123:HIS:H	1.22	1.01
1:A:35:LEU:HD11	1:A:86:ASP:HB3	1.39	1.01
1:B:254:ARG:HD3	1:B:256:GLU:HG2	1.46	0.98
1:B:280:GLN:HB2	1:B:286:LEU:HD12	1.45	0.97
1:C:51:GLN:HE22	1:C:93:ASP:H	1.05	0.97
1:C:77:ARG:O	1:C:80:VAL:HG12	1.66	0.96
1:B:50:LEU:HD11	1:B:56:LEU:HD13	1.49	0.92
1:B:168:VAL:HG23	1:B:172:GLN:HB2	1.52	0.92
1:C:204:VAL:HG12	1:C:205:PRO:HD2	1.49	0.92
1:A:73:PRO:O	1:A:76:VAL:HG12	1.70	0.91
1:B:295:LEU:O	1:B:298:VAL:HG12	1.72	0.90
1:B:44:LEU:O	1:B:48:VAL:HG23	1.72	0.90
1:B:47:ARG:HA	1:B:50:LEU:HG	1.54	0.89
1:C:216:MET:HE3	1:C:224:ILE:H	1.38	0.88
1:B:277:LEU:HD12	1:B:286:LEU:HD11	1.55	0.88

Continued on next page...

Continued from previous page...

Atom-1	Atom-2	Interatomic distance (Å)	Clash overlap (Å)
1:B:51:GLN:HE22	1:B:93:ASP:N	1.71	0.88
1:C:254:ARG:HD3	1:C:256:GLU:HG2	1.56	0.87
1:A:63:VAL:HG13	1:A:102:GLN:HG2	1.55	0.87
1:A:207:LEU:HD12	1:A:208:PRO:HD2	1.56	0.86
1:C:26:LEU:HD23	1:C:158:ILE:HD13	1.55	0.85
1:B:51:GLN:HE22	1:B:93:ASP:H	0.89	0.85
1:A:35:LEU:CD1	1:A:86:ASP:HB3	2.07	0.84
1:A:193:VAL:HG21	1:A:341:GLN:HB3	1.58	0.84
1:A:226:LEU:H	1:A:226:LEU:HD12	1.43	0.84
1:B:213:GLN:OE1	1:B:220:LEU:HD13	1.79	0.82
1:A:218:LYS:HA	1:A:218:LYS:HE2	1.59	0.82
1:A:127:ASN:HB3	1:A:130:VAL:HG12	1.60	0.82
1:C:180:ARG:HD3	1:C:197:PRO:O	1.80	0.82
1:A:207:LEU:CD1	1:A:208:PRO:HD2	2.10	0.81
1:B:43:SER:O	1:B:47:ARG:HD2	1.79	0.81
1:A:60:LEU:O	1:A:62:ASP:N	2.13	0.81
1:A:139:TYR:O	1:A:142:ARG:HG3	1.81	0.80
1:C:180:ARG:NH1	1:C:180:ARG:HG3	1.97	0.80
1:C:22:ARG:HB2	1:C:23:PRO:CD	2.11	0.79
1:B:68:ASP:HB3	1:B:69:HIS:HD2	1.47	0.79
1:C:211:ASP:HB3	3:C:1003:HOH:O	1.82	0.79
1:A:108:LEU:O	1:A:112:THR:HG23	1.81	0.78
1:B:184:ARG:HG2	1:B:184:ARG:HH21	1.48	0.78
1:C:168:VAL:HG22	1:C:172:GLN:HB2	1.66	0.78
1:A:27:THR:O	1:A:58:VAL:HA	1.84	0.78
1:A:333:GLU:O	1:A:337:GLN:HG2	1.85	0.77
1:B:36:HIS:HD2	1:B:38:GLY:H	1.30	0.77
1:A:303:LEU:O	1:A:307:ARG:HB2	1.84	0.77
1:C:93:ASP:HB3	1:C:96:LYS:HB2	1.67	0.77
1:A:184:ARG:HD2	1:A:196:GLU:OE1	1.84	0.77
1:A:168:VAL:CG2	1:A:172:GLN:HB2	2.10	0.77
1:A:49:ARG:HA	3:A:1677:HOH:O	1.84	0.76
1:A:201:LEU:HD23	1:A:202:SER:H	1.50	0.76
1:C:154:GLN:NE2	2:C:3000:TRP:OXT	2.18	0.76
1:B:51:GLN:NE2	1:B:93:ASP:H	1.75	0.76
1:A:110:GLU:O	1:A:113:VAL:HG12	1.86	0.76
1:A:85:LEU:HD13	1:A:310:ARG:NH2	2.00	0.75
1:B:268:ASP:OD2	1:B:274:VAL:HG23	1.87	0.75
1:C:92:LEU:HG	1:C:97:THR:HG21	1.69	0.75
1:B:51:GLN:NE2	1:B:97:THR:HG22	1.99	0.75
1:A:255:VAL:HG22	1:A:261:PHE:CE1	2.22	0.74

Continued on next page...

Continued from previous page...

Atom-1	Atom-2	Interatomic distance (Å)	Clash overlap (Å)
1:C:233:VAL:HG21	1:C:307:ARG:HH21	1.52	0.74
1:A:202:SER:OG	1:A:205:PRO:HB3	1.87	0.74
1:B:349:PHE:CD2	1:C:80:VAL:HG11	2.23	0.74
1:C:56:LEU:HD11	1:C:58:VAL:HG13	1.70	0.73
1:A:291:VAL:HG13	1:A:292:LYS:N	2.02	0.73
1:A:254:ARG:HB2	1:A:256:GLU:OE1	1.88	0.73
1:A:30:ARG:HH22	1:A:68:ASP:HB3	1.53	0.72
1:A:127:ASN:HB3	1:A:130:VAL:CG1	2.19	0.72
1:B:22:ARG:HH21	1:B:53:GLU:HG3	1.53	0.72
1:A:201:LEU:CD2	1:A:202:SER:H	2.02	0.72
1:C:40:LEU:HA	1:C:44:LEU:HD12	1.72	0.72
1:C:24:ARG:HD3	1:C:55:GLU:OE2	1.90	0.72
1:A:44:LEU:O	1:A:48:VAL:HG23	1.90	0.72
1:C:273:ARG:HD2	3:C:1520:HOH:O	1.89	0.72
1:A:49:ARG:HD2	3:A:1677:HOH:O	1.90	0.72
1:C:22:ARG:HB2	1:C:23:PRO:HD3	1.71	0.72
1:B:240:MET:HE3	1:B:260:VAL:HG12	1.72	0.71
1:C:168:VAL:CG2	1:C:172:GLN:HB2	2.20	0.71
1:B:254:ARG:CD	1:B:256:GLU:HG2	2.18	0.71
1:A:291:VAL:HG13	1:A:292:LYS:H	1.55	0.71
1:B:127:ASN:HB3	1:B:130:VAL:HG12	1.71	0.71
1:A:169:GLY:H	1:A:172:GLN:HG3	1.54	0.71
1:A:180:ARG:HG2	1:A:196:GLU:HG2	1.73	0.71
1:A:254:ARG:HH11	1:A:256:GLU:HB2	1.56	0.71
1:B:68:ASP:OD1	1:B:137:LYS:HE2	1.90	0.71
1:A:229:SER:O	1:A:233:VAL:HG23	1.91	0.71
1:C:211:ASP:OD1	1:C:211:ASP:O	2.09	0.71
1:C:311:ALA:HA	1:C:314:GLU:HG3	1.71	0.71
1:C:290:LYS:HA	1:C:290:LYS:HE2	1.73	0.70
1:A:173:LEU:N	1:A:174:PRO:HD2	2.05	0.70
1:B:240:MET:CE	1:B:260:VAL:HG12	2.22	0.70
1:C:51:GLN:HE21	1:C:97:THR:HG22	1.57	0.70
1:B:277:LEU:CD1	1:B:286:LEU:HD11	2.22	0.69
1:A:230:ALA:HB1	1:A:300:ASN:HD21	1.57	0.69
1:C:108:LEU:O	1:C:112:THR:HG23	1.93	0.69
1:A:273:ARG:O	1:A:277:LEU:HD23	1.91	0.69
1:A:291:VAL:CG1	1:A:292:LYS:H	2.05	0.69
1:A:112:THR:O	1:A:116:LEU:HG	1.93	0.69
1:B:262:THR:HG21	3:B:1431:HOH:O	1.93	0.69
1:A:216:MET:HG3	1:A:223:ALA:HA	1.73	0.69
1:B:146:GLY:HA3	1:C:117:ASN:ND2	2.08	0.69

Continued on next page...

Continued from previous page...

Atom-1	Atom-2	Interatomic distance (Å)	Clash overlap (Å)
1:A:337:GLN:HB2	3:A:1490:HOH:O	1.92	0.68
1:A:63:VAL:HG13	1:A:102:GLN:CG	2.23	0.68
1:B:254:ARG:HD3	1:B:256:GLU:CG	2.22	0.68
1:A:305:PRO:HG2	1:A:306:ILE:H	1.59	0.68
1:B:51:GLN:HE21	1:B:97:THR:CG2	1.99	0.68
1:A:168:VAL:HG22	1:A:169:GLY:O	1.93	0.68
1:A:259:PRO:HA	1:A:262:THR:CG2	2.24	0.68
1:A:168:VAL:HG11	1:A:199:ALA:HB1	1.76	0.67
1:B:259:PRO:HA	1:B:262:THR:CG2	2.25	0.67
1:A:241:TYR:O	1:A:259:PRO:HD2	1.94	0.67
1:A:288:ASP:HA	1:A:291:VAL:HG12	1.75	0.67
1:C:171:ASP:HB2	1:C:172:GLN:NE2	2.09	0.67
1:C:166:VAL:HG21	1:C:176:LEU:HD23	1.76	0.67
1:B:43:SER:C	1:B:47:ARG:HD2	2.15	0.66
1:A:85:LEU:HD13	1:A:310:ARG:HH22	1.58	0.66
1:A:215:LYS:NZ	1:A:217:SER:OG	2.29	0.66
1:A:317:PRO:O	1:A:320:VAL:HG12	1.96	0.66
1:C:234:ALA:O	1:C:238:MET:HG2	1.94	0.66
1:B:273:ARG:O	1:B:276:ALA:HB3	1.96	0.66
1:A:63:VAL:CG1	1:A:102:GLN:HG2	2.25	0.66
1:B:127:ASN:HB3	1:B:130:VAL:CG1	2.25	0.66
1:C:56:LEU:HD12	1:C:97:THR:HB	1.78	0.66
1:B:22:ARG:CB	1:B:23:PRO:HD3	2.26	0.65
1:B:237:VAL:HG13	1:B:240:MET:HE2	1.78	0.65
1:A:52:ASP:HB3	1:A:96:LYS:NZ	2.12	0.65
1:B:53:GLU:OE1	1:B:53:GLU:HA	1.96	0.65
1:B:122:SER:OG	1:C:141:GLU:HB3	1.97	0.65
1:C:254:ARG:CD	1:C:256:GLU:HG2	2.24	0.65
1:A:254:ARG:HD2	1:A:256:GLU:HB2	1.79	0.65
1:A:261:PHE:HA	3:A:1622:HOH:O	1.97	0.65
1:B:322:ARG:HH21	1:B:322:ARG:HG2	1.62	0.65
1:A:41:ALA:CB	1:A:207:LEU:HD22	2.27	0.65
1:A:130:VAL:O	1:A:134:ILE:HG13	1.97	0.64
1:B:35:LEU:HD13	1:B:44:LEU:HD11	1.77	0.64
1:C:51:GLN:HE22	1:C:93:ASP:N	1.88	0.64
1:A:170:ASP:OD1	1:A:203:ARG:NH2	2.31	0.64
1:A:226:LEU:HD23	1:A:306:ILE:CD1	2.27	0.64
1:B:22:ARG:CG	1:B:23:PRO:HD3	2.28	0.64
1:C:120:THR:CG2	1:C:123:HIS:H	2.04	0.64
1:C:166:VAL:HG23	1:C:166:VAL:O	1.97	0.64
1:A:99:CYS:SG	1:A:324:VAL:HG12	2.38	0.64

Continued on next page...

Continued from previous page...

Atom-1	Atom-2	Interatomic distance (Å)	Clash overlap (Å)
1:B:295:LEU:O	1:B:295:LEU:HD23	1.97	0.64
1:A:133:GLU:O	1:A:137:LYS:HG3	1.98	0.63
1:A:185:ARG:HD2	1:A:189:LEU:HD22	1.80	0.63
1:B:40:LEU:HA	1:B:44:LEU:HB2	1.80	0.63
1:A:139:TYR:CD2	1:A:143:VAL:HG13	2.33	0.63
1:B:296:ILE:HG13	1:B:297:ASP:N	2.11	0.63
1:B:233:VAL:O	1:B:237:VAL:HG23	1.98	0.63
1:A:173:LEU:O	1:A:177:GLU:HB2	1.99	0.63
1:A:130:VAL:HG11	3:A:1543:HOH:O	1.98	0.63
1:A:40:LEU:HA	1:A:44:LEU:HB3	1.79	0.63
1:A:72:ARG:HG2	3:A:1665:HOH:O	1.97	0.63
1:B:40:LEU:HD23	1:B:226:LEU:HD21	1.81	0.63
1:C:294:HIS:O	1:C:298:VAL:HG12	1.99	0.63
1:A:259:PRO:O	1:A:263:PHE:HB2	1.98	0.62
1:A:30:ARG:HD2	1:A:65:ALA:HA	1.80	0.62
1:A:160:ALA:HA	1:A:338:THR:HG21	1.82	0.62
1:C:231:ASP:OD1	1:C:235:ARG:NE	2.32	0.62
1:A:256:GLU:H	1:A:256:GLU:CD	2.02	0.62
1:B:101:VAL:HG13	1:B:104:ALA:HB3	1.81	0.62
1:B:255:VAL:HG21	1:B:278:LYS:HG3	1.81	0.62
1:C:112:THR:HG22	1:C:156:ALA:CB	2.30	0.62
1:C:254:ARG:HD2	1:C:256:GLU:O	1.99	0.62
1:A:269:PRO:HD2	1:A:273:ARG:NH1	2.15	0.62
1:B:68:ASP:HB3	1:B:69:HIS:CD2	2.31	0.62
1:A:253:GLY:O	1:A:282:ARG:HA	1.98	0.62
1:A:79:ASN:HA	1:A:82:ALA:HB3	1.82	0.62
1:B:289:VAL:O	1:B:293:LYS:HG3	2.00	0.62
1:C:56:LEU:CD1	1:C:58:VAL:HG13	2.30	0.61
1:C:64:GLN:H	1:C:102:GLN:HE22	1.47	0.61
1:A:207:LEU:CG	1:A:208:PRO:HD2	2.30	0.61
1:C:295:LEU:HD22	1:C:299:LEU:HG	1.82	0.61
1:C:326:GLU:HG2	3:C:1650:HOH:O	2.00	0.61
1:C:175:MET:SD	1:C:175:MET:C	2.79	0.61
1:A:269:PRO:HA	3:A:1293:HOH:O	2.01	0.61
1:B:146:GLY:HA3	1:C:117:ASN:HD22	1.64	0.61
1:B:248:ARG:HD3	1:B:248:ARG:N	2.15	0.61
1:A:208:PRO:HG2	1:A:263:PHE:CE2	2.35	0.61
1:A:52:ASP:N	1:A:52:ASP:OD2	2.30	0.60
1:B:22:ARG:HB2	1:B:23:PRO:HD3	1.81	0.60
1:A:299:LEU:O	1:A:303:LEU:HD13	2.01	0.60
1:B:173:LEU:N	1:B:174:PRO:HD2	2.16	0.60

Continued on next page...

Continued from previous page...

Atom-1	Atom-2	Interatomic distance (Å)	Clash overlap (Å)
1:A:291:VAL:CG1	1:A:292:LYS:N	2.61	0.60
1:A:190:TYR:O	1:A:191:ALA:C	2.39	0.60
1:A:289:VAL:O	1:A:293:LYS:HB2	2.02	0.60
1:B:22:ARG:HH21	1:B:53:GLU:CG	2.15	0.60
1:C:203:ARG:C	1:C:204:VAL:HG23	2.22	0.60
1:B:62:ASP:O	1:B:66:LEU:HD23	2.02	0.60
1:C:201:LEU:HD23	1:C:202:SER:H	1.67	0.60
1:A:232:GLU:O	1:A:236:LYS:HB2	2.02	0.59
1:A:255:VAL:HG22	1:A:261:PHE:CD1	2.36	0.59
1:B:140:GLY:O	1:B:143:VAL:HG23	2.02	0.59
1:B:268:ASP:OD1	1:B:273:ARG:NH2	2.36	0.59
1:B:40:LEU:O	1:B:45:GLN:HG2	2.03	0.59
1:A:176:LEU:HD13	1:A:176:LEU:O	2.02	0.59
1:A:294:HIS:HA	1:A:297:ASP:OD2	2.03	0.59
1:A:261:PHE:CE1	1:A:278:LYS:HG2	2.37	0.59
1:A:295:LEU:O	1:A:299:LEU:HG	2.03	0.59
1:A:210:LEU:HB2	1:A:222:ASN:OD1	2.02	0.59
1:A:229:SER:OG	1:A:232:GLU:HB2	2.01	0.59
1:B:64:GLN:H	1:B:102:GLN:HE22	1.51	0.59
1:B:127:ASN:CB	1:B:130:VAL:HG12	2.32	0.59
1:A:21:ALA:HB3	1:A:53:GLU:O	2.03	0.59
1:A:142:ARG:O	1:A:142:ARG:HD3	2.03	0.59
1:A:254:ARG:HH11	1:A:256:GLU:CB	2.16	0.59
1:C:310:ARG:O	1:C:314:GLU:HG2	2.03	0.59
1:C:95:GLN:HA	1:C:95:GLN:NE2	2.17	0.59
1:A:35:LEU:O	1:A:226:LEU:CD1	2.51	0.58
1:A:35:LEU:HD12	1:A:226:LEU:HD13	1.85	0.58
1:A:304:ALA:N	1:A:305:PRO:HD2	2.18	0.58
1:C:210:LEU:HD12	1:C:240:MET:HG2	1.84	0.58
1:C:79:ASN:O	1:C:83:VAL:HG22	2.02	0.58
1:C:254:ARG:CG	1:C:256:GLU:HG2	2.33	0.58
1:C:310:ARG:O	1:C:314:GLU:CG	2.52	0.58
1:A:273:ARG:O	1:A:276:ALA:HB3	2.04	0.58
2:C:3000:TRP:CG	2:C:3000:TRP:OXT	2.57	0.58
1:A:237:VAL:O	1:A:240:MET:N	2.30	0.58
1:A:208:PRO:HG3	1:A:262:THR:HG23	1.85	0.58
1:B:137:LYS:HD3	1:B:139:TYR:CE2	2.39	0.58
1:C:36:HIS:HB2	1:C:216:MET:CE	2.34	0.57
1:C:293:LYS:HG2	3:C:1361:HOH:O	2.04	0.57
1:C:68:ASP:OD2	1:C:69:HIS:HD2	1.86	0.57
1:A:226:LEU:HD12	1:A:226:LEU:N	2.16	0.57

Continued on next page...

Continued from previous page...

Atom-1	Atom-2	Interatomic distance (Å)	Clash overlap (Å)
1:A:305:PRO:HG2	1:A:306:ILE:HG22	1.86	0.57
1:B:23:PRO:HD2	1:B:54:ALA:HB2	1.85	0.57
1:C:48:VAL:O	1:C:51:GLN:HG2	2.04	0.57
1:A:22:ARG:N	1:A:23:PRO:CD	2.67	0.57
1:A:211:ASP:C	1:A:213:GLN:H	2.08	0.57
1:B:184:ARG:NH2	1:B:184:ARG:HG2	2.17	0.57
1:C:218:LYS:HB2	3:C:1206:HOH:O	2.04	0.57
1:A:98:THR:CG2	1:A:330:ARG:HD2	2.34	0.57
1:C:171:ASP:HB2	1:C:172:GLN:HE22	1.69	0.57
1:A:136:GLN:O	1:A:136:GLN:HG3	2.03	0.57
1:A:56:LEU:HD22	1:A:57:PHE:N	2.20	0.57
1:A:259:PRO:HA	1:A:262:THR:HG22	1.86	0.57
1:A:277:LEU:HD12	1:A:286:LEU:HD11	1.87	0.57
1:A:321:LEU:O	1:A:325:THR:HG23	2.04	0.57
1:B:231:ASP:O	1:B:235:ARG:HG3	2.05	0.57
1:B:207:LEU:HD12	1:B:208:PRO:HD2	1.87	0.57
1:C:56:LEU:HD11	1:C:58:VAL:CG1	2.35	0.57
1:A:296:ILE:HG13	1:A:297:ASP:N	2.20	0.56
1:A:98:THR:OG1	1:A:330:ARG:HD2	2.05	0.56
1:B:177:GLU:HG3	3:B:1946:HOH:O	2.05	0.56
1:C:133:GLU:O	1:C:136:GLN:HG3	2.04	0.56
1:C:40:LEU:HA	1:C:44:LEU:HB2	1.87	0.56
1:B:263:PHE:HB3	1:B:295:LEU:HD11	1.86	0.56
1:C:187:ASN:HB3	1:C:192:PRO:HA	1.86	0.56
1:B:36:HIS:CD2	1:B:38:GLY:H	2.19	0.56
1:C:56:LEU:HD13	1:C:56:LEU:C	2.26	0.56
1:A:246:HIS:NE2	1:A:251:ASP:O	2.33	0.56
1:B:277:LEU:H	1:B:277:LEU:HD22	1.69	0.56
1:A:36:HIS:H	1:A:39:HIS:HD2	1.52	0.56
1:C:180:ARG:HD2	1:C:196:GLU:HG3	1.87	0.56
1:C:74:GLU:HB2	3:C:1034:HOH:O	2.05	0.56
1:A:277:LEU:HA	1:A:280:GLN:NE2	2.21	0.56
1:A:302:VAL:O	1:A:305:PRO:HD2	2.06	0.56
1:A:240:MET:CE	1:A:259:PRO:HB2	2.36	0.56
1:B:75:GLN:O	1:B:79:ASN:ND2	2.38	0.56
1:B:44:LEU:HA	1:B:47:ARG:CD	2.35	0.56
1:B:189:LEU:HD21	1:C:71:ASP:HA	1.87	0.55
1:C:166:VAL:HG21	1:C:176:LEU:CD2	2.37	0.55
1:C:216:MET:HE2	1:C:223:ALA:HB1	1.87	0.55
1:A:149:VAL:O	1:A:149:VAL:HG12	2.07	0.55
1:B:93:ASP:OD2	1:B:94:PRO:HD2	2.07	0.55

Continued on next page...

Continued from previous page...

Atom-1	Atom-2	Interatomic distance (Å)	Clash overlap (Å)
1:C:204:VAL:HG21	3:C:1173:HOH:O	2.05	0.55
1:C:51:GLN:NE2	1:C:97:THR:HG22	2.21	0.55
1:A:112:THR:HG22	1:A:156:ALA:CB	2.36	0.55
1:A:216:MET:HA	1:A:222:ASN:O	2.07	0.55
1:B:248:ARG:HD3	1:B:248:ARG:H	1.71	0.55
1:C:254:ARG:HG2	1:C:255:VAL:N	2.20	0.55
1:A:201:LEU:CD2	1:A:202:SER:N	2.70	0.55
1:A:37:LEU:HG	1:A:224:ILE:HG12	1.88	0.55
1:C:233:VAL:HG21	1:C:307:ARG:NH2	2.22	0.55
1:C:256:GLU:CD	1:C:256:GLU:H	2.08	0.55
1:A:218:LYS:HA	1:A:218:LYS:CE	2.34	0.55
1:A:58:VAL:HG13	1:A:58:VAL:O	2.05	0.55
1:A:76:VAL:HG13	1:A:77:ARG:N	2.22	0.55
1:B:349:PHE:CE2	1:C:81:LEU:HD13	2.42	0.55
1:C:183:VAL:HG13	1:C:194:LEU:HB2	1.89	0.55
1:C:40:LEU:HD12	1:C:44:LEU:HB2	1.87	0.55
1:C:62:ASP:OD2	1:C:103:SER:OG	2.24	0.55
1:B:64:GLN:HE22	1:B:154:GLN:CG	2.20	0.55
1:C:59:LEU:HD12	1:C:100:VAL:HG22	1.87	0.55
1:B:237:VAL:HG13	1:B:240:MET:CE	2.36	0.55
1:A:35:LEU:O	1:A:226:LEU:HD12	2.07	0.54
1:A:260:VAL:O	1:A:264:LEU:HB2	2.07	0.54
1:B:134:ILE:HD13	1:B:143:VAL:HG21	1.88	0.54
1:C:127:ASN:HB3	1:C:130:VAL:HG22	1.89	0.54
1:A:220:LEU:C	1:A:222:ASN:H	2.10	0.54
1:C:175:MET:HB2	3:C:1018:HOH:O	2.07	0.54
1:C:78:GLU:HA	1:C:78:GLU:OE2	2.07	0.54
1:A:247:LEU:HD22	3:A:1323:HOH:O	2.07	0.54
1:A:288:ASP:O	1:A:292:LYS:HG3	2.07	0.54
1:B:247:LEU:HB2	1:B:248:ARG:HH21	1.72	0.54
1:C:64:GLN:OE1	1:C:154:GLN:HG3	2.08	0.54
1:C:51:GLN:NE2	1:C:93:ASP:H	1.89	0.54
1:A:193:VAL:HG22	1:A:193:VAL:O	2.08	0.54
1:A:220:LEU:C	1:A:222:ASN:N	2.60	0.54
1:C:339:LEU:O	1:C:343:ARG:HG3	2.08	0.54
1:C:27:THR:HB	3:C:1219:HOH:O	2.07	0.54
1:A:107:GLU:HB3	1:A:339:LEU:HG	1.90	0.54
1:C:187:ASN:CB	1:C:192:PRO:HA	2.37	0.54
1:C:295:LEU:O	1:C:298:VAL:HG13	2.07	0.54
1:B:168:VAL:HG22	1:B:169:GLY:O	2.07	0.54
1:B:58:VAL:HG23	1:B:58:VAL:O	2.07	0.54

Continued on next page...

Continued from previous page...

Atom-1	Atom-2	Interatomic distance (Å)	Clash overlap (Å)
1:C:172:GLN:HG2	3:C:1945:HOH:O	2.07	0.54
1:B:295:LEU:HD23	1:B:295:LEU:C	2.28	0.54
1:B:296:ILE:HD12	1:B:300:ASN:ND2	2.23	0.54
1:B:22:ARG:NH2	1:B:53:GLU:HG3	2.22	0.53
1:B:66:LEU:C	1:B:68:ASP:H	2.10	0.53
1:A:248:ARG:N	1:A:248:ARG:HD3	2.23	0.53
1:C:40:LEU:CA	1:C:44:LEU:HD12	2.37	0.53
1:A:249:ALA:HB2	1:A:287:GLY:HA3	1.90	0.53
1:B:344:ARG:HH11	1:B:344:ARG:CG	2.21	0.53
1:A:242:THR:HB	1:A:258:ASN:HD21	1.73	0.53
1:B:259:PRO:HA	1:B:262:THR:HG23	1.89	0.53
1:C:243:ASP:OD2	1:C:246:HIS:HB2	2.08	0.53
1:C:180:ARG:HE	1:C:196:GLU:CD	2.12	0.53
1:A:255:VAL:HG13	1:A:261:PHE:CD1	2.44	0.53
1:B:255:VAL:HG13	1:B:261:PHE:CD2	2.43	0.53
1:B:23:PRO:O	1:B:54:ALA:HB1	2.09	0.53
1:B:74:GLU:OE1	1:C:347:ARG:NH1	2.42	0.53
1:B:211:ASP:HB3	1:B:213:GLN:HG3	1.90	0.53
1:C:120:THR:HG22	1:C:123:HIS:HB2	1.90	0.53
1:C:22:ARG:CB	1:C:23:PRO:CD	2.86	0.52
1:A:215:LYS:HB3	3:A:2052:HOH:O	2.08	0.52
1:A:237:VAL:HG13	1:A:295:LEU:HD23	1.91	0.52
1:C:286:LEU:HD12	1:C:291:VAL:HG23	1.91	0.52
1:A:180:ARG:O	1:A:184:ARG:HD3	2.10	0.52
1:B:299:LEU:HA	1:B:302:VAL:CG1	2.40	0.52
1:C:180:ARG:CG	1:C:180:ARG:NH1	2.68	0.52
1:B:202:SER:HB3	3:B:1285:HOH:O	2.09	0.52
1:B:253:GLY:O	1:B:282:ARG:HA	2.09	0.52
1:B:296:ILE:CD1	1:B:300:ASN:ND2	2.73	0.52
1:C:21:ALA:HB2	3:C:1220:HOH:O	2.09	0.52
1:A:180:ARG:HB3	1:A:184:ARG:HH11	1.75	0.52
1:A:207:LEU:HG	1:A:208:PRO:HD2	1.91	0.52
1:A:250:SER:O	1:A:284:GLY:HA2	2.09	0.52
1:B:102:GLN:HG3	1:B:108:LEU:HD12	1.92	0.52
1:C:63:VAL:HB	1:C:102:GLN:NE2	2.25	0.52
1:A:288:ASP:O	1:A:291:VAL:HG12	2.09	0.52
1:B:32:THR:O	1:B:75:GLN:NE2	2.43	0.52
1:A:116:LEU:HD23	1:A:152:VAL:HG21	1.91	0.52
1:A:261:PHE:CD1	1:A:278:LYS:HG2	2.44	0.52
1:A:232:GLU:HB3	3:A:1447:HOH:O	2.10	0.51
1:B:299:LEU:HA	1:B:302:VAL:HG12	1.92	0.51

Continued on next page...

Continued from previous page...

Atom-1	Atom-2	Interatomic distance (Å)	Clash overlap (Å)
1:B:116:LEU:O	1:C:145:ALA:HB3	2.10	0.51
1:A:255:VAL:HG11	1:A:278:LYS:HE2	1.92	0.51
1:B:189:LEU:CD2	1:C:71:ASP:HA	2.40	0.51
1:A:23:PRO:O	1:A:54:ALA:HB1	2.09	0.51
1:B:211:ASP:OD1	1:B:222:ASN:HB3	2.11	0.51
1:A:260:VAL:HG13	1:A:295:LEU:CD2	2.40	0.51
1:B:292:LYS:O	1:B:296:ILE:CG2	2.58	0.51
1:A:234:ALA:HA	1:A:296:ILE:CG2	2.41	0.51
1:A:293:LYS:O	1:A:296:ILE:HG12	2.10	0.51
1:B:298:VAL:O	1:B:302:VAL:HG12	2.11	0.51
1:C:165:LEU:HD22	1:C:200:GLN:HB2	1.93	0.51
1:C:295:LEU:CD2	1:C:299:LEU:HG	2.40	0.51
1:A:41:ALA:HB2	1:A:207:LEU:HD22	1.92	0.51
1:A:208:PRO:HG2	1:A:263:PHE:HE2	1.74	0.51
1:A:66:LEU:HD21	1:A:76:VAL:HG11	1.92	0.51
1:B:248:ARG:NE	1:B:251:ASP:OD2	2.44	0.51
1:B:333:GLU:HG3	1:B:337:GLN:HE21	1.74	0.51
1:C:41:ALA:HB2	1:C:267:PHE:CZ	2.46	0.51
1:C:322:ARG:HD3	3:C:1047:HOH:O	2.10	0.51
1:C:77:ARG:O	1:C:80:VAL:CG1	2.51	0.51
1:A:215:LYS:O	1:A:222:ASN:ND2	2.44	0.50
1:B:333:GLU:OE2	1:B:333:GLU:HA	2.11	0.50
1:A:30:ARG:HH22	1:A:68:ASP:CB	2.21	0.50
1:C:254:ARG:HD3	1:C:256:GLU:CG	2.36	0.50
1:A:63:VAL:HG13	1:A:102:GLN:CD	2.32	0.50
1:A:150:TYR:CE2	1:A:154:GLN:NE2	2.80	0.50
1:C:120:THR:HG23	1:C:123:HIS:N	2.07	0.50
1:A:193:VAL:HG21	1:A:341:GLN:CB	2.36	0.50
1:A:290:LYS:HE2	1:A:290:LYS:HA	1.93	0.50
1:A:74:GLU:HG2	3:A:1380:HOH:O	2.11	0.50
1:C:210:LEU:HD12	1:C:240:MET:CG	2.42	0.50
1:B:273:ARG:NH2	1:B:294:HIS:NE2	2.59	0.50
1:A:150:TYR:O	1:A:154:GLN:HG3	2.11	0.50
1:A:276:ALA:O	1:A:280:GLN:HG3	2.12	0.50
1:C:127:ASN:OD1	1:C:129:THR:HG22	2.12	0.50
1:A:110:GLU:O	1:A:113:VAL:CG1	2.58	0.50
1:A:205:PRO:O	1:A:206:ARG:C	2.50	0.50
1:B:184:ARG:CG	1:B:184:ARG:HH21	2.20	0.50
1:B:30:ARG:HH22	1:B:68:ASP:HB2	1.76	0.50
1:A:173:LEU:N	1:A:174:PRO:CD	2.75	0.49
1:A:260:VAL:HG13	1:A:295:LEU:HD22	1.92	0.49

Continued on next page...

Continued from previous page...

Atom-1	Atom-2	Interatomic distance (Å)	Clash overlap (Å)
1:B:316:ASP:OD2	1:B:319:ALA:HB2	2.11	0.49
1:B:254:ARG:HH11	1:B:256:GLU:CG	2.25	0.49
1:C:256:GLU:HB2	3:C:1723:HOH:O	2.11	0.49
1:A:290:LYS:HE2	1:A:290:LYS:CA	2.43	0.49
1:B:295:LEU:HA	1:B:298:VAL:HG12	1.94	0.49
1:C:133:GLU:O	1:C:137:LYS:HD3	2.12	0.49
1:B:145:ALA:HB3	1:C:116:LEU:O	2.13	0.49
1:C:185:ARG:HH11	1:C:189:LEU:HD22	1.77	0.49
1:A:237:VAL:O	1:A:240:MET:HB2	2.11	0.49
1:B:315:ARG:O	1:B:315:ARG:HG2	2.12	0.49
1:B:349:PHE:CD2	1:C:80:VAL:CG1	2.95	0.49
1:B:25:VAL:HG22	1:B:165:LEU:HB3	1.94	0.49
1:B:292:LYS:O	1:B:296:ILE:HG23	2.12	0.49
1:C:241:TYR:OH	1:C:244:PRO:HD3	2.13	0.49
1:A:134:ILE:HD13	1:A:143:VAL:HG21	1.94	0.49
1:A:218:LYS:NZ	1:A:225:ALA:HB2	2.28	0.49
1:C:23:PRO:HB3	3:C:1304:HOH:O	2.12	0.49
1:A:49:ARG:O	1:A:52:ASP:OD2	2.31	0.49
1:B:43:SER:O	1:B:46:ASN:N	2.46	0.49
1:B:23:PRO:HD2	1:B:54:ALA:CB	2.41	0.49
1:C:254:ARG:CD	1:C:256:GLU:O	2.61	0.49
1:C:60:LEU:HD22	1:C:83:VAL:HG21	1.95	0.49
1:A:143:VAL:HG12	1:A:144:PRO:HD2	1.95	0.48
1:A:175:MET:SD	1:A:176:LEU:N	2.86	0.48
1:A:211:ASP:O	1:A:213:GLN:N	2.42	0.48
1:A:292:LYS:O	1:A:295:LEU:N	2.47	0.48
1:B:29:ASP:O	1:B:31:PRO:HD3	2.14	0.48
1:B:50:LEU:C	1:B:50:LEU:HD12	2.34	0.48
1:C:255:VAL:HG21	1:C:278:LYS:HG2	1.95	0.48
1:A:125:ARG:HG3	1:A:125:ARG:HH21	1.78	0.48
1:B:237:VAL:CG1	1:B:240:MET:HE2	2.43	0.48
1:C:27:THR:HG22	1:C:167:PRO:HD2	1.94	0.48
1:B:211:ASP:OD1	1:B:213:GLN:NE2	2.47	0.48
1:A:112:THR:HG22	1:A:153:SER:HA	1.95	0.48
1:A:158:ILE:HG23	1:A:163:ALA:HB3	1.95	0.48
1:A:98:THR:OG1	1:A:330:ARG:NH1	2.43	0.48
1:A:105:VAL:HG13	1:A:108:LEU:HG	1.94	0.48
1:A:185:ARG:O	1:A:189:LEU:HB2	2.14	0.48
1:A:308:THR:O	1:A:311:ALA:HB3	2.12	0.48
1:B:270:ASP:O	1:B:273:ARG:HB3	2.14	0.48
1:B:277:LEU:HD13	1:B:280:GLN:NE2	2.29	0.48

Continued on next page...

Continued from previous page...

Atom-1	Atom-2	Interatomic distance (Å)	Clash overlap (Å)
1:C:60:LEU:HD22	1:C:83:VAL:CG2	2.43	0.48
1:A:175:MET:C	1:A:175:MET:SD	2.92	0.48
1:B:264:LEU:HG	1:B:295:LEU:HD12	1.96	0.48
1:C:292:LYS:O	1:C:296:ILE:HG13	2.14	0.48
1:A:212:GLY:O	1:A:213:GLN:C	2.53	0.47
1:A:253:GLY:HA3	1:A:281:TYR:CE2	2.49	0.47
1:B:101:VAL:O	1:B:101:VAL:HG13	2.14	0.47
1:B:255:VAL:HG22	1:B:261:PHE:CE2	2.48	0.47
1:B:68:ASP:OD1	1:B:137:LYS:CE	2.62	0.47
1:B:127:ASN:CG	1:B:130:VAL:HG12	2.34	0.47
1:A:45:GLN:O	1:A:48:VAL:HB	2.14	0.47
1:B:315:ARG:HG3	3:B:1367:HOH:O	2.13	0.47
1:C:276:ALA:O	1:C:280:GLN:HG3	2.13	0.47
1:C:344:ARG:HD3	3:C:1217:HOH:O	2.15	0.47
1:B:249:ALA:O	1:B:250:SER:C	2.53	0.47
1:B:36:HIS:CE1	1:B:39:HIS:CE1	3.03	0.47
1:B:77:ARG:NE	1:C:347:ARG:NH2	2.62	0.47
1:C:63:VAL:H	1:C:102:GLN:HE21	1.61	0.47
1:A:215:LYS:NZ	1:A:215:LYS:HB2	2.29	0.47
1:A:32:THR:HG23	1:A:69:HIS:HE1	1.79	0.47
1:C:154:GLN:CD	2:C:3000:TRP:OXT	2.52	0.47
1:C:201:LEU:HD23	1:C:202:SER:N	2.27	0.47
1:B:92:LEU:HA	1:B:92:LEU:HD12	1.78	0.47
1:C:36:HIS:CE1	1:C:216:MET:HG2	2.50	0.47
1:A:36:HIS:HD2	1:A:38:GLY:H	1.61	0.47
1:B:64:GLN:H	1:B:102:GLN:NE2	2.12	0.47
1:B:66:LEU:C	1:B:68:ASP:N	2.68	0.47
1:C:171:ASP:CB	1:C:172:GLN:NE2	2.78	0.47
1:A:130:VAL:HG13	1:A:131:LYS:N	2.28	0.47
1:B:149:VAL:O	1:B:149:VAL:CG1	2.63	0.47
1:B:22:ARG:HB2	1:B:23:PRO:CD	2.45	0.47
1:A:288:ASP:CA	1:A:291:VAL:HG12	2.42	0.47
1:A:241:TYR:O	1:A:259:PRO:CD	2.60	0.47
1:B:316:ASP:OD1	1:B:318:ASP:OD2	2.33	0.47
1:B:62:ASP:OD1	1:B:103:SER:OG	2.26	0.47
1:A:209:GLY:O	1:A:210:LEU:C	2.53	0.47
1:B:71:ASP:OD1	1:B:72:ARG:CD	2.63	0.47
1:C:241:TYR:CZ	1:C:244:PRO:HD3	2.50	0.47
1:A:98:THR:HG23	1:A:330:ARG:HD2	1.96	0.46
1:A:234:ALA:HA	1:A:296:ILE:HG22	1.95	0.46
1:B:241:TYR:O	1:B:259:PRO:HG2	2.14	0.46

Continued on next page...

Continued from previous page...

Atom-1	Atom-2	Interatomic distance (Å)	Clash overlap (Å)
1:B:110:GLU:OE1	1:B:343:ARG:HD3	2.15	0.46
1:C:320:VAL:O	1:C:323:PHE:HB3	2.15	0.46
1:A:288:ASP:HA	1:A:291:VAL:CG1	2.43	0.46
1:A:296:ILE:HG13	1:A:297:ASP:H	1.81	0.46
1:A:56:LEU:HD13	1:A:97:THR:HG23	1.98	0.46
1:A:242:THR:HB	1:A:258:ASN:ND2	2.30	0.46
1:A:99:CYS:HB2	1:A:323:PHE:CZ	2.50	0.46
1:A:32:THR:HG22	1:A:32:THR:O	2.15	0.46
1:A:33:GLY:HA2	1:A:79:ASN:ND2	2.31	0.46
1:B:274:VAL:C	1:B:276:ALA:N	2.69	0.46
1:C:258:ASN:HD22	1:C:258:ASN:C	2.18	0.46
1:C:310:ARG:O	1:C:314:GLU:HG3	2.15	0.46
1:A:277:LEU:HD13	1:A:280:GLN:NE2	2.31	0.46
1:A:32:THR:HG23	1:A:69:HIS:CE1	2.51	0.46
1:A:36:HIS:O	1:A:38:GLY:N	2.49	0.46
1:B:22:ARG:CD	1:B:23:PRO:HD3	2.46	0.46
1:A:255:VAL:HG21	1:A:278:LYS:HD3	1.98	0.46
1:A:290:LYS:N	1:A:290:LYS:HE2	2.30	0.46
1:A:46:ASN:ND2	1:A:50:LEU:HG	2.30	0.46
1:A:30:ARG:O	1:A:32:THR:N	2.48	0.46
1:A:335:ALA:O	1:A:339:LEU:HD23	2.16	0.46
1:B:333:GLU:O	1:B:337:GLN:HG3	2.16	0.46
1:B:263:PHE:CB	1:B:295:LEU:HD11	2.46	0.46
1:B:344:ARG:NH1	1:B:344:ARG:HG3	2.30	0.46
1:C:311:ALA:CA	1:C:314:GLU:HG3	2.43	0.46
1:A:256:GLU:CD	1:A:256:GLU:N	2.70	0.46
1:C:25:VAL:HG13	1:C:167:PRO:HD3	1.96	0.46
1:A:344:ARG:HD3	3:A:1031:HOH:O	2.16	0.45
1:B:166:VAL:HB	1:B:176:LEU:HD21	1.98	0.45
1:C:187:ASN:CG	1:C:192:PRO:HA	2.36	0.45
1:B:22:ARG:CB	1:B:23:PRO:CD	2.94	0.45
1:B:330:ARG:O	1:B:333:GLU:HB3	2.16	0.45
1:A:180:ARG:HB3	1:A:184:ARG:NH1	2.31	0.45
1:A:51:GLN:HE22	1:A:92:LEU:HA	1.80	0.45
1:B:287:GLY:O	1:B:290:LYS:N	2.49	0.45
1:C:270:ASP:OD2	1:C:273:ARG:CZ	2.64	0.45
1:A:255:VAL:HG13	1:A:261:PHE:HB3	1.99	0.45
1:B:184:ARG:CG	1:B:184:ARG:NH2	2.76	0.45
1:B:51:GLN:NE2	1:B:97:THR:CG2	2.71	0.45
1:C:210:LEU:HD21	1:C:224:ILE:HG13	1.97	0.45
1:C:246:HIS:C	1:C:247:LEU:HD12	2.37	0.45

Continued on next page...

Continued from previous page...

Atom-1	Atom-2	Interatomic distance (Å)	Clash overlap (Å)
1:C:245:GLY:O	1:C:247:LEU:HD13	2.16	0.45
1:C:30:ARG:HD2	1:C:64:GLN:HE21	1.81	0.45
1:A:187:ASN:OD1	1:A:192:PRO:HA	2.16	0.45
1:A:21:ALA:HB1	1:A:23:PRO:HD2	1.98	0.45
1:A:294:HIS:O	1:A:298:VAL:HG23	2.16	0.45
1:A:296:ILE:O	1:A:300:ASN:HB2	2.15	0.45
1:A:303:LEU:HB3	1:A:307:ARG:NH2	2.31	0.45
1:A:46:ASN:O	1:A:50:LEU:N	2.33	0.45
1:B:219:SER:HA	3:B:1401:HOH:O	2.16	0.45
1:B:264:LEU:O	1:B:268:ASP:HB3	2.17	0.45
1:B:278:LYS:HB2	1:B:278:LYS:HE3	1.76	0.45
1:A:265:ASP:HB3	1:A:274:VAL:HG11	1.97	0.45
1:A:249:ALA:CB	1:A:287:GLY:HA3	2.47	0.45
1:A:322:ARG:HA	1:A:325:THR:HG1	1.82	0.45
1:A:211:ASP:C	1:A:213:GLN:N	2.70	0.45
1:B:74:GLU:OE2	1:C:347:ARG:NH1	2.50	0.45
1:A:226:LEU:HD23	1:A:306:ILE:HD12	1.98	0.45
1:A:277:LEU:O	1:A:281:TYR:N	2.50	0.45
1:A:302:VAL:HG13	1:A:303:LEU:HD13	1.97	0.45
1:B:270:ASP:HB2	1:B:273:ARG:CZ	2.47	0.45
1:C:112:THR:HG22	1:C:156:ALA:HB3	1.98	0.45
1:B:169:GLY:O	1:B:170:ASP:C	2.55	0.44
1:B:175:MET:C	1:B:175:MET:SD	2.95	0.44
1:B:74:GLU:CD	1:C:347:ARG:NH1	2.70	0.44
1:C:271:PRO:HG2	3:C:1373:HOH:O	2.17	0.44
1:C:51:GLN:NE2	1:C:97:THR:CG2	2.79	0.44
1:A:130:VAL:CG1	1:A:131:LYS:N	2.79	0.44
1:B:122:SER:HG	1:C:141:GLU:HB3	1.83	0.44
1:A:105:VAL:HA	1:A:106:PRO:HD2	1.80	0.44
1:A:293:LYS:HD2	1:A:296:ILE:HD11	1.99	0.44
1:A:68:ASP:OD2	1:A:137:LYS:NZ	2.45	0.44
1:B:140:GLY:O	1:B:143:VAL:CG2	2.66	0.44
1:B:165:LEU:HD23	1:B:198:GLN:O	2.18	0.44
1:C:185:ARG:O	1:C:189:LEU:HB2	2.16	0.44
1:A:136:GLN:O	1:A:136:GLN:CG	2.66	0.44
1:C:321:LEU:HD22	1:C:325:THR:HG23	2.00	0.44
1:C:36:HIS:CG	1:C:216:MET:HE2	2.52	0.44
1:C:30:ARG:HA	1:C:31:PRO:HD3	1.79	0.44
1:A:205:PRO:HG2	1:A:206:ARG:H	1.82	0.44
1:C:201:LEU:HD22	1:C:202:SER:HB3	2.00	0.44
1:C:62:ASP:OD2	1:C:103:SER:CB	2.66	0.44

Continued on next page...

Continued from previous page...

Atom-1	Atom-2	Interatomic distance (Å)	Clash overlap (Å)
1:A:119:VAL:HG22	1:A:120:THR:N	2.32	0.44
1:A:149:VAL:O	1:A:152:VAL:HG13	2.17	0.44
1:C:92:LEU:HD12	1:C:92:LEU:HA	1.80	0.44
1:C:58:VAL:CG2	1:C:99:CYS:HA	2.47	0.44
1:A:52:ASP:HB3	1:A:96:LYS:HZ1	1.82	0.43
1:A:52:ASP:HB3	1:A:96:LYS:HZ3	1.83	0.43
1:A:76:VAL:CG1	1:A:77:ARG:N	2.81	0.43
1:B:123:HIS:HE1	3:B:1334:HOH:O	2.01	0.43
1:A:143:VAL:HG12	1:A:144:PRO:CD	2.49	0.43
1:A:180:ARG:HG2	1:A:197:PRO:HD2	1.99	0.43
1:C:154:GLN:O	1:C:158:ILE:HG12	2.18	0.43
1:C:166:VAL:O	1:C:166:VAL:CG2	2.66	0.43
1:C:268:ASP:HA	1:C:269:PRO:HD2	1.87	0.43
1:C:154:GLN:NE2	2:C:3000:TRP:CD2	2.86	0.43
1:A:237:VAL:HA	1:A:240:MET:HG3	2.00	0.43
1:B:346:MET:CE	1:B:348:LEU:HD11	2.49	0.43
1:C:68:ASP:OD2	1:C:69:HIS:CD2	2.69	0.43
1:A:168:VAL:CG1	1:A:199:ALA:HB1	2.46	0.43
1:A:294:HIS:HD2	1:A:297:ASP:OD2	2.02	0.43
1:A:81:LEU:HD12	1:A:81:LEU:HA	1.77	0.43
1:B:255:VAL:HG13	1:B:261:PHE:CB	2.48	0.43
1:C:203:ARG:C	1:C:204:VAL:O	2.57	0.43
1:A:250:SER:O	1:A:284:GLY:CA	2.66	0.43
1:A:293:LYS:O	1:A:296:ILE:CG1	2.66	0.43
1:C:204:VAL:HG12	1:C:205:PRO:CD	2.36	0.43
1:A:210:LEU:HD22	1:A:240:MET:HG2	2.01	0.43
1:A:269:PRO:HD2	1:A:273:ARG:HH12	1.84	0.43
1:A:291:VAL:O	1:A:292:LYS:C	2.56	0.43
1:C:62:ASP:O	1:C:66:LEU:HG	2.18	0.43
1:B:101:VAL:HG12	1:B:328:THR:OG1	2.18	0.43
1:B:93:ASP:HA	1:B:94:PRO:HD3	1.86	0.43
1:A:210:LEU:HD22	1:A:240:MET:CG	2.49	0.42
1:A:254:ARG:CD	1:A:256:GLU:HB2	2.47	0.42
1:A:334:VAL:HA	1:A:337:GLN:HG3	2.01	0.42
1:C:189:LEU:HD12	1:C:189:LEU:HA	1.87	0.42
1:A:121:VAL:O	1:A:125:ARG:HB2	2.19	0.42
1:A:173:LEU:HD13	3:A:2045:HOH:O	2.18	0.42
1:A:21:ALA:HB1	1:A:23:PRO:CD	2.48	0.42
1:A:208:PRO:HG3	1:A:262:THR:CG2	2.48	0.42
1:B:58:VAL:HG23	1:B:99:CYS:HA	2.00	0.42
1:A:62:ASP:H	1:A:102:GLN:HB3	1.84	0.42

Continued on next page...

Continued from previous page...

Atom-1	Atom-2	Interatomic distance (Å)	Clash overlap (Å)
1:A:105:VAL:O	1:A:105:VAL:HG13	2.19	0.42
1:A:105:VAL:HG13	1:A:108:LEU:CD1	2.49	0.42
1:A:150:TYR:N	1:A:151:PRO:CD	2.83	0.42
1:B:254:ARG:NH1	1:B:256:GLU:HG3	2.34	0.42
1:C:52:ASP:OD2	1:C:96:LYS:NZ	2.49	0.42
1:A:191:ALA:HA	1:A:192:PRO:HD3	1.80	0.42
1:A:241:TYR:CD1	1:A:241:TYR:O	2.73	0.42
1:A:58:VAL:CG1	1:A:58:VAL:O	2.67	0.42
1:B:277:LEU:HA	1:B:286:LEU:HD11	2.01	0.42
1:A:274:VAL:C	1:A:276:ALA:H	2.22	0.42
1:B:30:ARG:HH22	1:B:68:ASP:CB	2.33	0.42
1:C:108:LEU:HD13	1:C:157:ASP:OD1	2.19	0.42
1:C:230:ALA:HB1	1:C:300:ASN:HD21	1.85	0.42
1:B:21:ALA:HA	1:B:54:ALA:HA	2.01	0.42
1:B:258:ASN:HA	1:B:259:PRO:HD2	1.97	0.42
1:B:346:MET:HE3	1:B:348:LEU:HD11	2.02	0.42
1:C:231:ASP:OD1	1:C:235:ARG:CZ	2.68	0.42
1:A:214:ALA:C	1:A:215:LYS:HG3	2.40	0.42
1:B:211:ASP:CB	1:B:213:GLN:HG3	2.50	0.42
1:C:180:ARG:CD	1:C:197:PRO:O	2.61	0.42
1:A:119:VAL:HG21	1:A:124:LEU:HD13	2.02	0.42
1:B:277:LEU:HA	1:B:286:LEU:CD1	2.50	0.42
1:A:165:LEU:HD22	1:A:166:VAL:N	2.35	0.42
1:B:59:LEU:HD12	1:B:100:VAL:O	2.19	0.42
1:C:25:VAL:HG22	1:C:165:LEU:HB3	2.01	0.42
1:C:243:ASP:HA	1:C:244:PRO:HD2	1.87	0.42
1:A:216:MET:CG	1:A:223:ALA:HA	2.47	0.41
1:A:22:ARG:N	1:A:23:PRO:HD2	2.34	0.41
1:C:248:ARG:O	1:C:251:ASP:HB2	2.20	0.41
1:A:203:ARG:HD2	3:A:1508:HOH:O	2.20	0.41
1:A:305:PRO:HG2	1:A:306:ILE:N	2.31	0.41
1:B:273:ARG:O	1:B:277:LEU:HD22	2.20	0.41
1:B:278:LYS:HG2	1:B:282:ARG:NH2	2.34	0.41
1:B:344:ARG:NH1	1:B:344:ARG:CG	2.80	0.41
1:C:127:ASN:HB3	1:C:130:VAL:CG2	2.51	0.41
1:C:32:THR:O	1:C:32:THR:HG22	2.19	0.41
1:C:64:GLN:H	1:C:102:GLN:NE2	2.15	0.41
1:A:110:GLU:HG2	1:A:114:TYR:CE1	2.54	0.41
1:A:273:ARG:HD3	3:A:1187:HOH:O	2.20	0.41
1:A:47:ARG:O	1:A:51:GLN:N	2.51	0.41
1:B:142:ARG:HA	1:C:120:THR:OG1	2.20	0.41

Continued on next page...

Continued from previous page...

Atom-1	Atom-2	Interatomic distance (Å)	Clash overlap (Å)
1:B:244:PRO:C	1:B:246:HIS:H	2.24	0.41
1:C:129:THR:O	1:C:133:GLU:HG3	2.21	0.41
1:C:170:ASP:N	1:C:170:ASP:OD1	2.53	0.41
1:B:255:VAL:HG22	1:B:261:PHE:CD2	2.56	0.41
1:B:66:LEU:HD12	1:B:70:PHE:HA	2.01	0.41
1:C:304:ALA:N	1:C:305:PRO:HD2	2.35	0.41
1:A:201:LEU:HD22	1:A:202:SER:N	2.35	0.41
1:C:255:VAL:O	1:C:258:ASN:HB3	2.20	0.41
1:A:51:GLN:OE1	1:A:93:ASP:N	2.43	0.41
1:A:72:ARG:N	1:A:73:PRO:CD	2.83	0.41
1:C:25:VAL:HG11	1:C:50:LEU:HD13	2.02	0.41
1:C:293:LYS:HA	1:C:293:LYS:HD2	1.93	0.41
1:A:125:ARG:HG3	1:A:125:ARG:NH2	2.35	0.41
1:A:32:THR:CG2	1:A:69:HIS:HE1	2.33	0.41
1:A:89:ALA:O	1:A:306:ILE:HB	2.20	0.41
1:B:63:VAL:H	1:B:102:GLN:HE21	1.67	0.41
1:B:243:ASP:OD1	1:B:244:PRO:O	2.39	0.41
1:A:105:VAL:O	1:A:108:LEU:HG	2.21	0.41
1:A:230:ALA:CB	1:A:300:ASN:HD21	2.28	0.41
1:B:246:HIS:CE1	1:B:288:ASP:OD2	2.73	0.41
1:A:36:HIS:O	1:A:39:HIS:N	2.51	0.41
1:B:137:LYS:HE3	3:B:1218:HOH:O	2.19	0.41
1:B:210:LEU:HD21	1:B:224:ILE:HG13	2.03	0.41
1:C:102:GLN:HG3	1:C:108:LEU:HD12	2.02	0.41
1:C:58:VAL:HG23	1:C:99:CYS:HA	2.02	0.41
1:B:184:ARG:HE	1:B:196:GLU:CD	2.23	0.40
1:B:67:THR:HG22	1:C:117:ASN:HD21	1.85	0.40
1:A:36:HIS:CE1	1:A:39:HIS:NE2	2.89	0.40
1:B:295:LEU:C	1:B:298:VAL:HG12	2.39	0.40
1:B:61:ALA:HB1	1:B:64:GLN:HB3	2.04	0.40
1:A:277:LEU:HA	1:A:280:GLN:HE21	1.87	0.40
1:A:302:VAL:HG13	1:A:303:LEU:CD1	2.51	0.40
1:B:255:VAL:HG13	1:B:261:PHE:CG	2.57	0.40
1:B:33:GLY:HA2	1:B:79:ASN:OD1	2.21	0.40
1:B:93:ASP:O	1:B:97:THR:CG2	2.69	0.40
1:C:270:ASP:OD2	1:C:273:ARG:NH1	2.54	0.40
1:A:41:ALA:HB1	1:A:207:LEU:HD13	2.04	0.40
1:A:260:VAL:HA	1:A:295:LEU:HD22	2.02	0.40
1:B:260:VAL:HG23	1:B:261:PHE:N	2.37	0.40
1:C:62:ASP:OD2	1:C:103:SER:HB2	2.21	0.40
1:C:150:TYR:N	1:C:151:PRO:CD	2.84	0.40

Continued on next page...

Continued from previous page...

Atom-1	Atom-2	Interatomic distance (Å)	Clash overlap (Å)
1:A:261:PHE:HZ	1:A:281:TYR:CG	2.40	0.40
1:A:264:LEU:HD22	3:A:1622:HOH:O	2.22	0.40
1:B:254:ARG:NH1	1:B:256:GLU:CG	2.84	0.40
1:B:322:ARG:HG2	1:B:322:ARG:NH2	2.32	0.40
1:B:47:ARG:O	1:B:51:GLN:HB2	2.20	0.40
1:C:32:THR:HG23	1:C:75:GLN:NE2	2.36	0.40
1:C:43:SER:O	1:C:47:ARG:HD3	2.21	0.40
1:C:58:VAL:HG23	1:C:58:VAL:O	2.21	0.40

All (32) symmetry-related close contacts are listed below. The label for Atom-2 includes the symmetry operator and encoded unit-cell translations to be applied.

Atom-1	Atom-2	Interatomic distance (Å)	Clash overlap (Å)
1:A:235:ARG:CA	3:C:2021:HOH:O[1_554]	0.49	1.71
3:C:1200:HOH:O	3:C:1789:HOH:O[4_546]	0.74	1.46
1:C:315:ARG:NH1	3:C:1771:HOH:O[4_556]	0.82	1.38
1:A:235:ARG:CZ	3:B:1589:HOH:O[1_554]	0.84	1.36
1:B:322:ARG:NH1	3:A:1468:HOH:O[1_546]	0.88	1.32
1:A:235:ARG:CB	3:C:2021:HOH:O[1_554]	1.14	1.06
1:A:235:ARG:NH2	3:B:1589:HOH:O[1_554]	1.32	0.88
1:A:235:ARG:NH1	3:B:1589:HOH:O[1_554]	1.34	0.86
1:C:315:ARG:NE	3:C:1613:HOH:O[4_556]	1.36	0.84
1:C:315:ARG:CD	3:C:1613:HOH:O[4_556]	1.59	0.61
1:A:235:ARG:CD	3:C:1529:HOH:O[1_554]	1.60	0.60
1:A:235:ARG:NE	3:C:1529:HOH:O[1_554]	1.62	0.58
1:A:235:ARG:N	3:C:2021:HOH:O[1_554]	1.64	0.56
3:A:1790:HOH:O	3:A:1956:HOH:O[2_655]	1.71	0.49
3:C:1118:HOH:O	3:C:1754:HOH:O[4_546]	1.80	0.40
1:B:201:LEU:N	1:A:341:GLN:NE2[2_655]	1.81	0.39
1:C:322:ARG:NH1	3:C:1537:HOH:O[4_546]	1.81	0.39
1:B:201:LEU:O	1:A:341:GLN:OE1[2_655]	1.86	0.34
1:A:235:ARG:C	3:C:2021:HOH:O[1_554]	1.93	0.27
1:B:235:ARG:NH1	1:C:245:GLY:O[4_535]	1.96	0.24
1:A:235:ARG:NE	3:B:1589:HOH:O[1_554]	1.97	0.23
1:B:177:GLU:OE2	1:A:192:PRO:CG[2_655]	1.98	0.22
1:B:322:ARG:CZ	3:A:1468:HOH:O[1_546]	1.99	0.21
1:C:315:ARG:CZ	3:C:1613:HOH:O[4_556]	2.00	0.20
1:A:235:ARG:CG	3:C:1529:HOH:O[1_554]	2.02	0.18
3:B:1248:HOH:O	3:A:1154:HOH:O[2_655]	2.05	0.15
3:C:1588:HOH:O	3:C:1691:HOH:O[1_545]	2.11	0.09

Continued on next page...

Continued from previous page...

Atom-1	Atom-2	Interatomic distance (Å)	Clash overlap (Å)
1:A:235:ARG:CG	3:C:2021:HOH:O[1_554]	2.12	0.08
1:B:170:ASP:OD1	3:A:1031:HOH:O[2_655]	2.12	0.08
1:C:315:ARG:CZ	3:C:1771:HOH:O[4_556]	2.12	0.08
3:B:1371:HOH:O	3:A:1175:HOH:O[2_655]	2.15	0.05
1:C:315:ARG:CA	3:C:1808:HOH:O[4_556]	2.17	0.03

5.3 Torsion angles [i](#)

5.3.1 Protein backbone [i](#)

There are no protein backbone outliers to report in this entry.

5.3.2 Protein sidechains [i](#)

There are no protein residues with a non-rotameric sidechain to report in this entry.

5.3.3 RNA [i](#)

There are no RNA molecules in this entry.

5.4 Non-standard residues in protein, DNA, RNA chains [i](#)

There are no non-standard protein/DNA/RNA residues in this entry.

5.5 Carbohydrates [i](#)

There are no monosaccharides in this entry.

5.6 Ligand geometry [i](#)

1 ligand is modelled in this entry.

In the following table, the Counts columns list the number of bonds (or angles) for which Mogul statistics could be retrieved, the number of bonds (or angles) that are observed in the model and the number of bonds (or angles) that are defined in the Chemical Component Dictionary. The Link column lists molecule types, if any, to which the group is linked. The Z score for a bond length (or angle) is the number of standard deviations the observed value is removed from the

expected value. A bond length (or angle) with $|Z| > 2$ is considered an outlier worth inspection. RMSZ is the root-mean-square of all Z scores of the bond lengths (or angles).

Mol	Type	Chain	Res	Link	Bond lengths			Bond angles		
					Counts	RMSZ	# Z > 2	Counts	RMSZ	# Z > 2
2	TRP	C	3000	-	12,16,16	1.26	1 (8%)	12,22,22	0.79	0

In the following table, the Chirals column lists the number of chiral outliers, the number of chiral centers analysed, the number of these observed in the model and the number defined in the Chemical Component Dictionary. Similar counts are reported in the Torsion and Rings columns. '-' means no outliers of that kind were identified.

Mol	Type	Chain	Res	Link	Chirals	Torsions	Rings
2	TRP	C	3000	-	-	0/3/8/8	0/2/2/2

All (1) bond length outliers are listed below:

Mol	Chain	Res	Type	Atoms	Z	Observed(Å)	Ideal(Å)
2	C	3000	TRP	CA-N	2.91	1.53	1.47

There are no bond angle outliers.

There are no chirality outliers.

There are no torsion outliers.

There are no ring outliers.

1 monomer is involved in 4 short contacts:

Mol	Chain	Res	Type	Clashes	Symm-Clashes
2	C	3000	TRP	4	0

5.7 Other polymers [i](#)

There are no such residues in this entry.

5.8 Polymer linkage issues [i](#)

There are no chain breaks in this entry.

6 Fit of model and data

6.1 Protein, DNA and RNA chains

EDS failed to run properly - this section is therefore empty.

6.2 Non-standard residues in protein, DNA, RNA chains

EDS failed to run properly - this section is therefore empty.

6.3 Carbohydrates

EDS failed to run properly - this section is therefore empty.

6.4 Ligands

EDS failed to run properly - this section is therefore empty.

6.5 Other polymers

EDS failed to run properly - this section is therefore empty.