



Full wwPDB X-ray Structure Validation Report ⓘ

Oct 16, 2023 – 06:43 PM EDT

PDB ID : 1YA6
Title : alpha-glucosyltransferase in complex with UDP and a 13-mer DNA containing a central A:G mismatch
Authors : Lariviere, L.; Sommer, N.; Morera, S.
Deposited on : 2004-12-17
Resolution : 2.40 Å(reported)

This is a Full wwPDB X-ray Structure Validation Report for a publicly released PDB entry.

We welcome your comments at validation@mail.wwpdb.org

A user guide is available at

<https://www.wwpdb.org/validation/2017/XrayValidationReportHelp>

with specific help available everywhere you see the ⓘ symbol.

The types of validation reports are described at

<http://www.wwpdb.org/validation/2017/FAQs#types>.

The following versions of software and data (see [references ⓘ](#)) were used in the production of this report:

MolProbity : 4.02b-467
Mogul : 1.8.5 (274361), CSD as541be (2020)
Xtriage (Phenix) : 1.13
EDS : 2.36
buster-report : 1.1.7 (2018)
Percentile statistics : 20191225.v01 (using entries in the PDB archive December 25th 2019)
Refmac : 5.8.0158
CCP4 : 7.0.044 (Gargrove)
Ideal geometry (proteins) : Engh & Huber (2001)
Ideal geometry (DNA, RNA) : Parkinson et al. (1996)
Validation Pipeline (wwPDB-VP) : 2.36

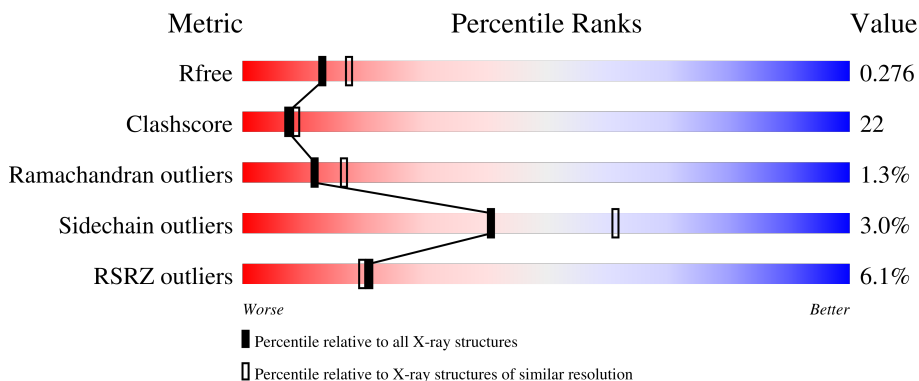
1 Overall quality at a glance

The following experimental techniques were used to determine the structure:

X-RAY DIFFRACTION

The reported resolution of this entry is 2.40 Å.

Percentile scores (ranging between 0-100) for global validation metrics of the entry are shown in the following graphic. The table shows the number of entries on which the scores are based.



Metric	Whole archive (#Entries)	Similar resolution (#Entries, resolution range(Å))
R_{free}	130704	3907 (2.40-2.40)
Clashscore	141614	4398 (2.40-2.40)
Ramachandran outliers	138981	4318 (2.40-2.40)
Sidechain outliers	138945	4319 (2.40-2.40)
RSRZ outliers	127900	3811 (2.40-2.40)

The table below summarises the geometric issues observed across the polymeric chains and their fit to the electron density. The red, orange, yellow and green segments of the lower bar indicate the fraction of residues that contain outliers for ≥ 3 , 2, 1 and 0 types of geometric quality criteria respectively. A grey segment represents the fraction of residues that are not modelled. The numeric value for each fraction is indicated below the corresponding segment, with a dot representing fractions $\leq 5\%$. The upper red bar (where present) indicates the fraction of residues that have poor fit to the electron density. The numeric value is given above the bar.

Mol	Chain	Length	Quality of chain
1	C	12	
2	D	12	
3	A	403	
3	B	403	

2 Entry composition i

There are 6 unique types of molecules in this entry. The entry contains 6977 atoms, of which 0 are hydrogens and 0 are deuteriums.

In the tables below, the ZeroOcc column contains the number of atoms modelled with zero occupancy, the AltConf column contains the number of residues with at least one atom in alternate conformation and the Trace column contains the number of residues modelled with at most 2 atoms.

- Molecule 1 is a DNA chain called 5'-D(*AP*TP*AP*CP*TP*AP*AP*GP*AP*TP*AP*G)-3'.

Mol	Chain	Residues	Atoms					ZeroOcc	AltConf	Trace
			Total	C	N	O	P			
1	C	12	246	119	49	67	11	0	0	0

- Molecule 2 is a DNA chain called 5'-D(*CP*TP*AP*TP*CP*TP*GP*AP*GP*TP*AP*T)-3'.

Mol	Chain	Residues	Atoms					ZeroOcc	AltConf	Trace
			Total	C	N	O	P			
2	D	12	242	118	41	72	11	0	0	0

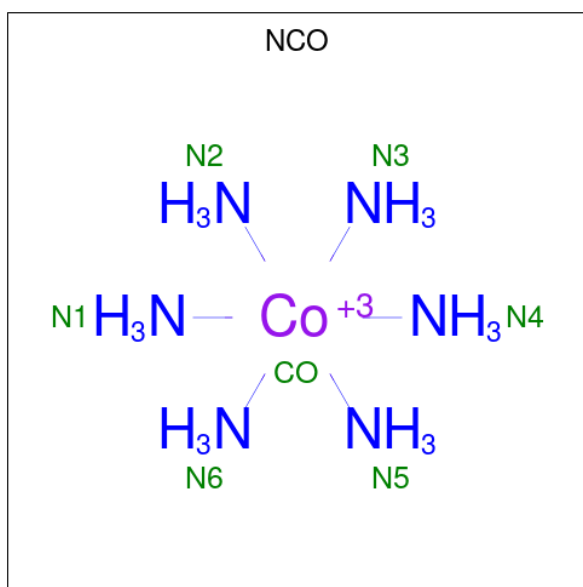
- Molecule 3 is a protein called DNA alpha-glucosyltransferase.

Mol	Chain	Residues	Atoms					ZeroOcc	AltConf	Trace
			Total	C	N	O	S			
3	A	380	3118	1986	532	584	16	0	0	0
3	B	377	3091	1970	527	577	17	0	0	0

There are 6 discrepancies between the modelled and reference sequences:

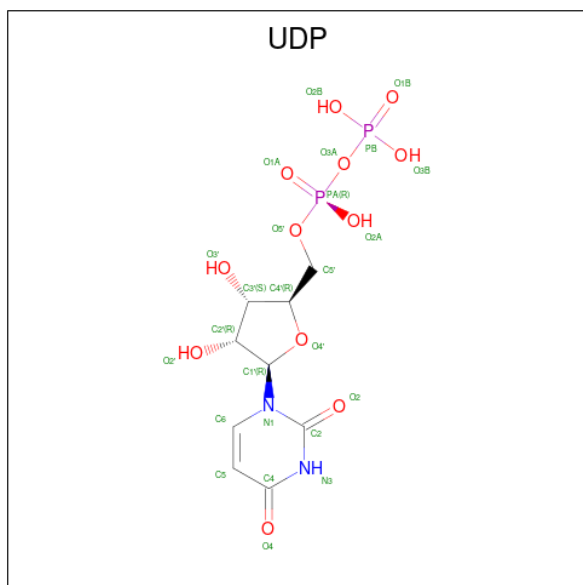
Chain	Residue	Modelled	Actual	Comment	Reference
A	998	MET	-	cloning artifact	UNP P04519
A	999	GLY	-	cloning artifact	UNP P04519
A	1000	SER	-	cloning artifact	UNP P04519
B	998	MET	-	cloning artifact	UNP P04519
B	999	GLY	-	cloning artifact	UNP P04519
B	1000	SER	-	cloning artifact	UNP P04519

- Molecule 4 is COBALT HEXAMMINE(III) (three-letter code: NCO) (formula: CoH₁₈N₆).



Mol	Chain	Residues	Atoms			ZeroOcc	AltConf
4	D	1	Total	Co	N	0	0
			7	1	6		
4	A	1	Total	Co	N	0	0
			7	1	6		
4	A	1	Total	Co	N	0	0
			7	1	6		
4	A	1	Total	Co	N	0	0
			7	1	6		
4	B	1	Total	Co	N	0	0
			7	1	6		
4	B	1	Total	Co	N	0	0
			7	1	6		

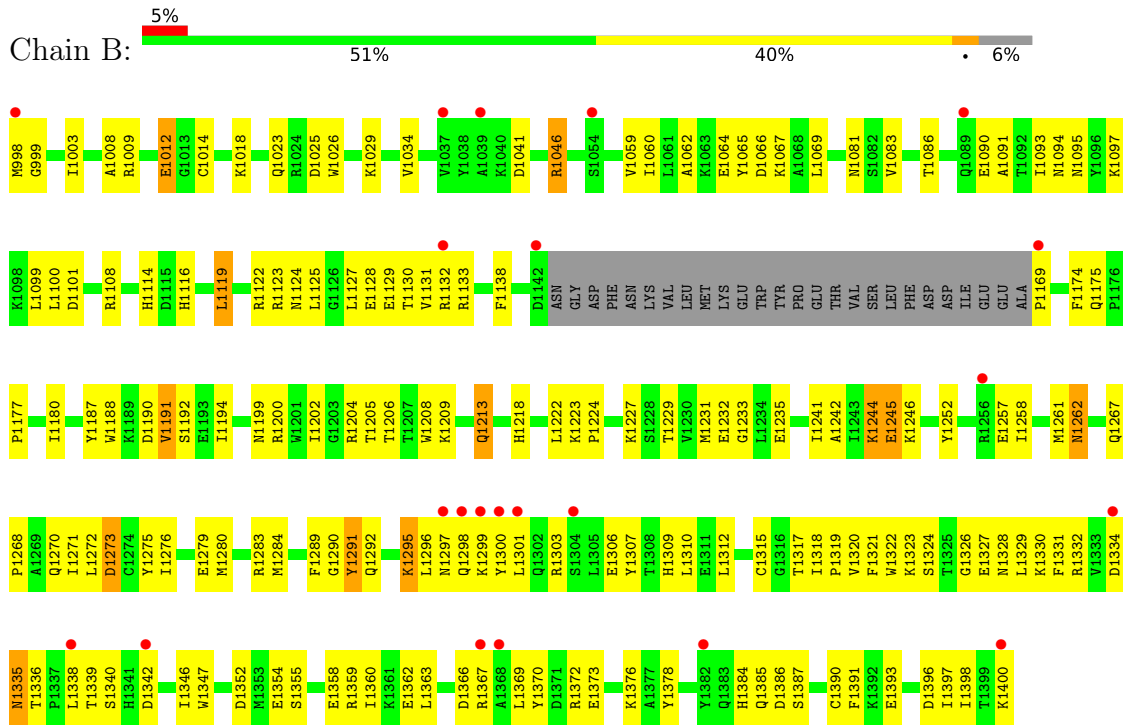
- Molecule 5 is URIDINE-5'-DIPHOSPHATE (three-letter code: UDP) (formula: C₉H₁₄N₂O₁₂P₂).



Mol	Chain	Residues	Atoms					ZeroOcc	AltConf
5	A	1	Total	C	N	O	P	0	0
			25	9	2	12	2		
5	B	1	Total	C	N	O	P	0	0
			25	9	2	12	2		

- Molecule 6 is water.

Mol	Chain	Residues	Atoms		ZeroOcc	AltConf
6	C	5	Total	O	0	0
			5	5		
6	D	6	Total	O	0	0
			6	6		
6	A	89	Total	O	0	0
			89	89		
6	B	81	Total	O	0	0
			81	81		



4 Data and refinement statistics

Property	Value	Source
Space group	P 1 21 1	Depositor
Cell constants a, b, c, α , β , γ	45.85Å 119.32Å 86.81Å 90.00° 92.87° 90.00°	Depositor
Resolution (Å)	20.00 – 2.40 19.98 – 2.40	Depositor EDS
% Data completeness (in resolution range)	(Not available) (20.00-2.40) 99.9 (19.98-2.40)	Depositor EDS
R_{merge}	(Not available)	Depositor
R_{sym}	0.07	Depositor
$\langle I/\sigma(I) \rangle$ ¹	2.30 (at 2.41Å)	Xtrriage
Refinement program	CNS 1.0	Depositor
R, R_{free}	0.230 , 0.280 0.223 , 0.276	Depositor DCC
R_{free} test set	1795 reflections (4.95%)	wwPDB-VP
Wilson B-factor (Å ²)	50.4	Xtrriage
Anisotropy	0.718	Xtrriage
Bulk solvent k_{sol} (e/Å ³), B_{sol} (Å ²)	0.33 , 50.6	EDS
L-test for twinning ²	$\langle L \rangle = 0.50$, $\langle L^2 \rangle = 0.34$	Xtrriage
Estimated twinning fraction	0.030 for h,-k,-l	Xtrriage
F_o, F_c correlation	0.95	EDS
Total number of atoms	6977	wwPDB-VP
Average B, all atoms (Å ²)	63.0	wwPDB-VP

Xtrriage's analysis on translational NCS is as follows: *The largest off-origin peak in the Patterson function is 4.49% of the height of the origin peak. No significant pseudotranslation is detected.*

¹Intensities estimated from amplitudes.

²Theoretical values of $\langle |L| \rangle$, $\langle L^2 \rangle$ for acentric reflections are 0.5, 0.333 respectively for untwinned datasets, and 0.375, 0.2 for perfectly twinned datasets.

5 Model quality

5.1 Standard geometry

Bond lengths and bond angles in the following residue types are not validated in this section: UDP, NCO

The Z score for a bond length (or angle) is the number of standard deviations the observed value is removed from the expected value. A bond length (or angle) with $|Z| > 5$ is considered an outlier worth inspection. RMSZ is the root-mean-square of all Z scores of the bond lengths (or angles).

Mol	Chain	Bond lengths		Bond angles	
		RMSZ	# Z >5	RMSZ	# Z >5
1	C	0.48	0/277	0.76	0/426
2	D	0.44	0/270	0.71	0/415
3	A	0.41	0/3190	0.63	0/4301
3	B	0.39	0/3162	0.62	0/4262
All	All	0.41	0/6899	0.64	0/9404

Chiral center outliers are detected by calculating the chiral volume of a chiral center and verifying if the center is modelled as a planar moiety or with the opposite hand. A planarity outlier is detected by checking planarity of atoms in a peptide group, atoms in a mainchain group or atoms of a sidechain that are expected to be planar.

Mol	Chain	#Chirality outliers	#Planarity outliers
1	C	0	1
3	A	0	1
All	All	0	2

There are no bond length outliers.

There are no bond angle outliers.

There are no chirality outliers.

All (2) planarity outliers are listed below:

Mol	Chain	Res	Type	Group
3	A	1307	TYR	Sidechain
1	C	6	DT	Sidechain

5.2 Too-close contacts

In the following table, the Non-H and H(model) columns list the number of non-hydrogen atoms and hydrogen atoms in the chain respectively. The H(added) column lists the number of hydrogen atoms added and optimized by MolProbity. The Clashes column lists the number of clashes within the asymmetric unit, whereas Symm-Clashes lists symmetry-related clashes.

Mol	Chain	Non-H	H(model)	H(added)	Clashes	Symm-Clashes
1	C	246	0	137	4	0
2	D	242	0	139	6	0
3	A	3118	0	3060	143	0
3	B	3091	0	3044	141	0
4	A	21	0	0	3	0
4	B	21	0	0	4	0
4	D	7	0	0	0	0
5	A	25	0	11	0	0
5	B	25	0	11	1	0
6	A	89	0	0	3	0
6	B	81	0	0	3	0
6	C	5	0	0	0	0
6	D	6	0	0	0	0
All	All	6977	0	6402	290	0

The all-atom clashscore is defined as the number of clashes found per 1000 atoms (including hydrogen atoms). The all-atom clashscore for this structure is 22.

All (290) close contacts within the same asymmetric unit are listed below, sorted by their clash magnitude.

Atom-1	Atom-2	Interatomic distance (Å)	Clash overlap (Å)
3:A:1213:GLN:H	3:A:1213:GLN:NE2	1.68	0.92
3:A:1118:VAL:HG12	3:A:1145:ASP:HB2	1.55	0.87
3:A:1113:GLN:HE22	3:A:1115:ASP:HB2	1.40	0.85
3:A:1116:HIS:CE1	4:A:2002:NCO:N3	2.45	0.85
3:A:1318:ILE:HG12	3:A:1370:TYR:CE1	2.15	0.82
3:A:1113:GLN:NE2	3:A:1115:ASP:HB2	1.96	0.81
3:B:1132:ARG:HD2	6:B:41:HOH:O	1.79	0.81
3:A:1120:SER:HA	3:A:1123:ARG:HD2	1.60	0.80
3:A:1199:ASN:HB3	3:A:1291:TYR:CE2	2.21	0.76
3:A:1213:GLN:H	3:A:1213:GLN:HE21	1.31	0.76
3:B:1175:GLN:O	3:B:1177:PRO:HD3	1.84	0.76
3:A:1258:ILE:HD11	3:A:1283:ARG:HD3	1.69	0.74
3:A:1023:GLN:HE22	3:A:1081:ASN:HD21	1.34	0.74
3:A:1372:ARG:O	3:A:1376:LYS:HG3	1.89	0.73

Continued on next page...

Continued from previous page...

Atom-1	Atom-2	Interatomic distance (Å)	Clash overlap (Å)
3:B:1023:GLN:HE22	3:B:1081:ASN:HD21	1.35	0.72
3:B:1252:TYR:OH	3:B:1273:ASP:HB3	1.89	0.72
3:B:1231:MET:HB2	3:B:1271:ILE:HD12	1.72	0.71
3:B:1301:LEU:HD22	3:B:1329:LEU:HD21	1.71	0.71
3:A:1118:VAL:HA	3:A:1145:ASP:OD1	1.91	0.71
3:A:1199:ASN:ND2	3:A:1291:TYR:OH	2.23	0.70
3:A:1332:ARG:H	3:A:1384:HIS:HD2	1.40	0.70
3:A:1313:GLY:HA3	3:A:1381:LEU:HD12	1.74	0.70
3:A:1359:ARG:O	3:A:1363:LEU:HD13	1.91	0.70
3:B:1396:ASP:O	3:B:1400:LYS:HB2	1.93	0.69
3:A:1298:GLN:HA	3:A:1301:LEU:HD12	1.76	0.68
3:B:1327:GLU:C	3:B:1328:ASN:HD22	1.97	0.68
3:A:1296:LEU:O	3:A:1301:LEU:HD11	1.93	0.68
3:A:1199:ASN:HB3	3:A:1291:TYR:HE2	1.59	0.67
3:A:1196:MET:HB3	3:A:1364:SER:OG	1.94	0.67
3:A:1368:ALA:O	3:A:1372:ARG:HG3	1.94	0.66
3:B:1129:GLU:N	3:B:1129:GLU:OE1	2.29	0.66
3:B:1116:HIS:NE2	4:B:3002:NCO:N3	2.45	0.65
3:B:1119:LEU:HD23	3:B:1123:ARG:HH22	1.62	0.65
3:B:1175:GLN:NE2	3:B:1303:ARG:HB3	2.11	0.65
3:B:1093:ILE:HD13	3:B:1125:LEU:HB3	1.79	0.64
3:A:1120:SER:HA	3:A:1123:ARG:CD	2.28	0.64
3:A:1218:HIS:HA	3:A:1222:LEU:HB2	1.80	0.63
3:A:1120:SER:C	3:A:1122:ARG:H	2.01	0.63
3:A:1201:TRP:HB3	3:A:1231:MET:HG2	1.80	0.63
3:A:1327:GLU:C	3:A:1328:ASN:HD22	2.02	0.63
3:B:1177:PRO:HB3	3:B:1390:CYS:HB2	1.81	0.62
3:B:1298:GLN:HG3	3:B:1328:ASN:HB3	1.81	0.62
3:A:1306:GLU:O	3:A:1309:HIS:HB2	2.00	0.62
3:B:1128:GLU:HB3	3:B:1129:GLU:OE1	1.99	0.61
3:A:1115:ASP:HB3	3:A:1120:SER:CB	2.30	0.61
3:A:1328:ASN:HD22	3:A:1328:ASN:N	1.98	0.61
3:A:1116:HIS:NE2	4:A:2002:NCO:N3	2.47	0.61
3:A:1180:ILE:HG23	3:A:1314:ALA:HB2	1.81	0.61
3:B:1127:LEU:O	3:B:1131:VAL:HG23	2.00	0.61
3:A:1355:SER:HA	3:A:1358:GLU:HG2	1.82	0.61
3:A:1169:PRO:HG2	3:A:1170:THR:H	1.64	0.61
3:B:1323:LYS:HE2	3:B:1327:GLU:OE1	2.01	0.61
3:A:1012:GLU:OE1	3:A:1016:VAL:HB	2.01	0.61
3:A:1060:ILE:CD1	3:B:1245:GLU:HG3	2.32	0.60
3:B:1116:HIS:CE1	4:B:3002:NCO:N3	2.70	0.60

Continued on next page...

Continued from previous page...

Atom-1	Atom-2	Interatomic distance (Å)	Clash overlap (Å)
3:B:1332:ARG:H	3:B:1384:HIS:HD2	1.49	0.60
3:A:1142:ASP:HB3	6:A:134:HOH:O	2.00	0.60
3:A:1253:TYR:OH	3:A:1270:GLN:NE2	2.34	0.60
3:A:1224:PRO:HB2	6:A:108:HOH:O	2.01	0.59
3:A:1252:TYR:OH	3:A:1273:ASP:HB3	2.01	0.59
3:B:1326:GLY:HA3	3:B:1347:TRP:CZ3	2.38	0.59
3:A:1113:GLN:NE2	3:A:1115:ASP:H	2.01	0.59
3:B:1202:ILE:HG22	3:B:1232:GLU:HB2	1.85	0.59
3:A:1223:LYS:HB3	3:A:1224:PRO:HD3	1.84	0.59
3:B:1372:ARG:O	3:B:1376:LYS:HG3	2.02	0.59
3:B:1267:GLN:HE21	3:B:1268:PRO:HD2	1.67	0.59
2:D:1:DC:H2'	2:D:2:DT:H72	1.84	0.58
3:A:1065:TYR:HE2	3:A:1098:LYS:HB3	1.68	0.58
2:D:1:DC:H5'	3:B:1241:ILE:HG22	1.83	0.58
3:B:1297:ASN:OD1	3:B:1299:LYS:HG2	2.02	0.58
3:B:1199:ASN:ND2	3:B:1291:TYR:OH	2.30	0.58
3:A:1022:GLU:OE1	3:A:1178:MET:HG3	2.04	0.58
3:B:1114:HIS:O	4:B:3002:NCO:N4	2.36	0.58
3:B:1358:GLU:O	3:B:1362:GLU:HG3	2.04	0.58
3:A:1120:SER:OG	3:A:1121:LEU:HG	2.04	0.57
3:B:1064:GLU:OE2	3:B:1067:LYS:HD3	2.04	0.57
3:B:1352:ASP:OD1	3:B:1355:SER:HB2	2.04	0.57
3:B:1208:TRP:HA	3:B:1295:LYS:HD3	1.87	0.57
3:B:1310:LEU:HD11	3:B:1385:GLN:NE2	2.19	0.57
3:A:1351:ASN:O	3:A:1352:ASP:HB2	2.05	0.57
3:A:1119:LEU:HD23	3:A:1119:LEU:O	2.03	0.57
3:A:1175:GLN:HE21	3:A:1303:ARG:CZ	2.16	0.57
3:B:1003:ILE:HB	3:B:1034:VAL:HG22	1.86	0.57
3:B:1122:ARG:HH21	3:B:1122:ARG:HG3	1.69	0.57
3:A:1222:LEU:O	3:A:1227:LYS:HB2	2.05	0.57
3:B:1169:PRO:HB2	6:B:42:HOH:O	2.05	0.57
3:B:1359:ARG:O	3:B:1363:LEU:HD13	2.04	0.57
1:C:9:DG:H2''	1:C:10:DA:OP2	2.05	0.56
3:B:1328:ASN:HD22	3:B:1328:ASN:N	2.03	0.56
3:B:1306:GLU:O	3:B:1309:HIS:HB2	2.05	0.56
3:A:1221:PHE:C	3:A:1224:PRO:HD2	2.26	0.56
3:A:1200:ARG:HD2	3:A:1284:MET:HE2	1.87	0.56
3:A:1206:THR:HG21	3:A:1208:TRP:NE1	2.21	0.56
3:B:1199:ASN:HB3	3:B:1291:TYR:CE2	2.41	0.56
3:B:1317:THR:O	3:B:1319:PRO:HD3	2.06	0.55
3:B:1241:ILE:O	3:B:1245:GLU:HB2	2.07	0.55

Continued on next page...

Continued from previous page...

Atom-1	Atom-2	Interatomic distance (Å)	Clash overlap (Å)
3:A:1121:LEU:HB2	6:A:181:HOH:O	2.07	0.55
3:B:1231:MET:HB2	3:B:1271:ILE:CD1	2.36	0.55
3:A:1232:GLU:OE1	3:A:1283:ARG:NH2	2.31	0.55
3:A:1086:THR:HA	3:A:1125:LEU:HD11	1.88	0.55
3:B:1059:VAL:HG23	3:B:1067:LYS:HE3	1.89	0.55
3:A:1116:HIS:NE2	3:A:1296:LEU:HD11	2.22	0.54
3:A:1115:ASP:HB3	3:A:1120:SER:HB2	1.89	0.54
3:A:1120:SER:O	3:A:1122:ARG:N	2.38	0.54
3:B:1354:GLU:O	3:B:1358:GLU:HG2	2.07	0.54
3:B:1330:LYS:HA	3:B:1336:THR:O	2.07	0.54
3:B:1334:ASP:O	3:B:1336:THR:HG23	2.07	0.54
3:B:1177:PRO:HB2	3:B:1387:SER:HA	1.90	0.54
3:A:1120:SER:CB	3:A:1123:ARG:NH2	2.70	0.54
3:A:1060:ILE:HD13	3:B:1245:GLU:HG3	1.91	0.53
3:B:1284:MET:HG3	3:B:1315:CYS:SG	2.48	0.53
3:B:1190:ASP:O	3:B:1192:SER:N	2.42	0.53
3:A:1085:ALA:O	3:A:1088:VAL:HG22	2.08	0.53
3:A:1200:ARG:HD3	3:A:1232:GLU:OE2	2.09	0.53
3:B:1295:LYS:O	3:B:1295:LYS:HG2	2.08	0.53
3:A:1213:GLN:NE2	3:A:1213:GLN:N	2.50	0.52
3:A:1264:ALA:HB1	3:A:1265:PRO:CD	2.39	0.52
3:A:1200:ARG:HB3	3:A:1284:MET:HE1	1.92	0.52
3:A:1298:GLN:HA	3:A:1301:LEU:CD1	2.40	0.52
3:A:1138:PHE:HB3	3:A:1174:PHE:CD2	2.44	0.52
3:A:1012:GLU:OE2	3:A:1014:CYS:HB2	2.09	0.52
3:A:1208:TRP:O	3:A:1294:SER:HA	2.10	0.51
3:A:1298:GLN:HA	3:A:1301:LEU:CG	2.40	0.51
3:A:1113:GLN:HG2	3:A:1146:PHE:CE1	2.45	0.51
3:B:1026:TRP:CD2	3:B:1391:PHE:HB3	2.45	0.51
3:B:1301:LEU:HB3	3:B:1329:LEU:HD23	1.93	0.51
3:B:1062:ALA:HB1	3:B:1091:ALA:HB3	1.92	0.51
3:A:1213:GLN:HE21	3:A:1213:GLN:N	2.05	0.51
3:A:1221:PHE:O	3:A:1224:PRO:HD2	2.11	0.51
3:B:1012:GLU:OE1	3:B:1014:CYS:HB2	2.11	0.51
3:B:1023:GLN:NE2	3:B:1081:ASN:HD21	2.07	0.51
3:B:1262:ASN:H	3:B:1270:GLN:NE2	2.09	0.51
3:A:1175:GLN:O	3:A:1177:PRO:HD3	2.11	0.50
3:B:1200:ARG:O	3:B:1290:GLY:HA2	2.12	0.50
3:A:1184:ARG:HG3	3:A:1188:TRP:HB2	1.92	0.50
1:C:2:DA:H2'	1:C:3:DT:H72	1.93	0.50
3:B:1086:THR:HA	3:B:1125:LEU:HG	1.92	0.50

Continued on next page...

Continued from previous page...

Atom-1	Atom-2	Interatomic distance (Å)	Clash overlap (Å)
3:B:1213:GLN:H	3:B:1213:GLN:NE2	2.10	0.50
3:A:1196:MET:HB3	3:A:1364:SER:HG	1.77	0.50
3:A:1320:VAL:HG12	3:A:1348:PHE:HB2	1.92	0.50
3:B:1352:ASP:CG	3:B:1355:SER:HB2	2.32	0.50
3:B:1093:ILE:HG13	3:B:1097:LYS:HE3	1.92	0.50
3:A:1253:TYR:CZ	3:A:1261:MET:HA	2.47	0.49
3:B:1393:GLU:O	3:B:1397:ILE:HG13	2.10	0.49
3:B:1138:PHE:HB3	3:B:1174:PHE:CD2	2.46	0.49
3:B:1233:GLY:HA2	3:B:1273:ASP:O	2.12	0.49
3:B:1297:ASN:O	3:B:1301:LEU:HG	2.11	0.49
3:A:1040:LYS:O	3:A:1040:LYS:HG2	2.13	0.49
3:B:1331:PHE:HE1	3:B:1384:HIS:HB2	1.77	0.49
3:A:1298:GLN:HA	3:A:1301:LEU:HB2	1.95	0.48
3:A:1267:GLN:HE21	3:A:1268:PRO:HD2	1.79	0.48
3:A:1099:LEU:O	3:A:1103:ILE:HG13	2.13	0.48
3:B:1177:PRO:HG2	3:B:1391:PHE:CE1	2.47	0.48
3:B:1328:ASN:N	3:B:1328:ASN:ND2	2.62	0.48
3:B:1133:ARG:HG3	3:B:1133:ARG:O	2.12	0.48
3:B:1062:ALA:HB1	3:B:1091:ALA:CB	2.44	0.48
3:B:1320:VAL:HA	3:B:1346:ILE:O	2.12	0.48
3:A:1318:ILE:HG12	3:A:1370:TYR:CD1	2.49	0.48
3:B:1008:ALA:HB3	3:B:1083:VAL:HA	1.94	0.48
3:B:1175:GLN:NE2	3:B:1303:ARG:HD2	2.29	0.48
3:A:1180:ILE:HD12	3:A:1382:TYR:HA	1.95	0.47
3:B:1206:THR:HG21	3:B:1208:TRP:NE1	2.30	0.47
3:B:1252:TYR:CZ	3:B:1273:ASP:HB3	2.50	0.47
1:C:2:DA:H2'	1:C:3:DT:C7	2.44	0.47
3:A:1265:PRO:O	3:A:1267:GLN:HG2	2.14	0.47
3:A:1318:ILE:HG12	3:A:1370:TYR:HE1	1.75	0.47
3:B:1301:LEU:HD12	3:B:1328:ASN:HB2	1.97	0.47
2:D:1:DC:C6	2:D:2:DT:H72	2.50	0.47
3:B:1100:LEU:HD13	3:B:1130:THR:HA	1.96	0.47
3:A:1369:LEU:HA	3:A:1372:ARG:NH1	2.30	0.47
3:B:1312:LEU:HD12	3:B:1321:PHE:HE1	1.79	0.47
3:A:1120:SER:C	3:A:1122:ARG:N	2.67	0.47
3:B:1233:GLY:CA	3:B:1273:ASP:O	2.63	0.47
3:B:1327:GLU:HG3	3:B:1339:THR:HG21	1.97	0.47
3:A:1332:ARG:H	3:A:1384:HIS:CD2	2.26	0.46
3:A:1373:GLU:OE2	3:A:1376:LYS:HE2	2.16	0.46
3:A:1258:ILE:HG12	3:A:1258:ILE:O	2.15	0.46
3:A:1350:GLU:HG3	3:A:1351:ASN:ND2	2.31	0.46

Continued on next page...

Continued from previous page...

Atom-1	Atom-2	Interatomic distance (Å)	Clash overlap (Å)
2:D:1:DC:H2'	2:D:2:DT:C7	2.43	0.46
3:A:1265:PRO:O	3:A:1266:ASN:C	2.53	0.46
3:A:1060:ILE:HD11	3:B:1245:GLU:HG3	1.98	0.46
1:C:5:DC:H2''	1:C:6:DT:H5'	1.98	0.46
3:A:1295:LYS:HG2	3:A:1322:TRP:CD2	2.51	0.46
3:B:1108:ARG:NH1	3:B:1398:ILE:O	2.49	0.45
3:B:1295:LYS:HD2	3:B:1295:LYS:N	2.31	0.45
3:B:1299:LYS:HE2	3:B:1300:TYR:CE1	2.51	0.45
3:B:1275:TYR:CD1	3:B:1280:MET:HB2	2.51	0.45
3:A:1234:LEU:HD12	3:A:1271:ILE:HG23	1.99	0.45
3:B:1223:LYS:HB3	3:B:1224:PRO:HD3	1.97	0.45
3:B:1244:LYS:HG2	3:B:1245:GLU:N	2.31	0.45
3:A:1113:GLN:HE22	3:A:1115:ASP:CB	2.20	0.45
3:B:1334:ASP:O	3:B:1335:ASN:C	2.54	0.45
3:B:1342:ASP:OD2	3:B:1376:LYS:NZ	2.49	0.45
3:A:1116:HIS:HE1	4:A:2002:NCO:N3	2.08	0.45
3:A:1133:ARG:O	3:A:1133:ARG:HG3	2.17	0.45
3:A:1298:GLN:CA	3:A:1301:LEU:HD12	2.46	0.45
3:B:1086:THR:HG23	3:B:1123:ARG:C	2.37	0.45
3:B:1276:ILE:HB	3:B:1279:GLU:HB2	1.99	0.45
3:A:1297:ASN:O	3:A:1301:LEU:HG	2.17	0.45
4:B:3002:NCO:N1	5:B:3001:UDP:PB	2.90	0.45
3:A:1120:SER:HA	3:A:1123:ARG:NE	2.32	0.44
3:B:1188:TRP:CZ3	3:B:1378:TYR:HB2	2.52	0.44
3:B:1329:LEU:HB2	3:B:1338:LEU:HD12	1.99	0.44
3:B:1003:ILE:O	3:B:1034:VAL:HA	2.17	0.44
3:B:1191:VAL:HG23	3:B:1370:TYR:CD2	2.52	0.44
3:A:1113:GLN:NE2	3:A:1115:ASP:CB	2.76	0.44
3:A:1371:ASP:HA	3:A:1374:ARG:HG2	1.98	0.44
3:B:1194:ILE:HD12	3:B:1370:TYR:HE2	1.82	0.44
3:A:1120:SER:HA	3:A:1123:ARG:CZ	2.48	0.44
3:A:1323:LYS:HD3	3:A:1349:ASP:OD2	2.16	0.44
2:D:5:DC:C3'	3:B:1122:ARG:HH22	2.31	0.44
3:B:1291:TYR:N	3:B:1291:TYR:CD2	2.84	0.44
3:B:1298:GLN:HG3	3:B:1328:ASN:CB	2.47	0.44
3:B:1367:ARG:O	3:B:1370:TYR:HB3	2.18	0.44
3:A:1140:HIS:HE1	3:A:1176:PRO:HD3	1.82	0.44
3:B:1065:TYR:CE1	3:B:1069:LEU:HD22	2.53	0.44
3:A:1217:PHE:HD2	3:A:1222:LEU:HD11	1.83	0.44
3:A:1231:MET:HB2	3:A:1271:ILE:HD12	2.00	0.43
3:A:1217:PHE:CE2	3:A:1222:LEU:HD21	2.54	0.43

Continued on next page...

Continued from previous page...

Atom-1	Atom-2	Interatomic distance (Å)	Clash overlap (Å)
3:A:1318:ILE:HA	3:A:1319:PRO:HD3	1.82	0.43
3:B:1218:HIS:CD2	3:B:1229:THR:OG1	2.70	0.43
3:A:1273:ASP:O	3:A:1274:CYS:C	2.56	0.43
3:B:998:MET:HB3	3:B:999:GLY:H	1.64	0.43
3:B:1018:LYS:HG2	3:B:1307:TYR:CG	2.54	0.43
3:B:1124:ASN:ND2	6:B:37:HOH:O	2.51	0.43
3:A:1217:PHE:CD2	3:A:1222:LEU:HD11	2.54	0.43
3:A:1258:ILE:HD11	3:A:1283:ARG:CD	2.42	0.43
3:B:1180:ILE:HB	3:B:1386:ASP:OD1	2.18	0.43
3:B:1296:LEU:CB	3:B:1301:LEU:HD21	2.49	0.43
3:B:1331:PHE:CE1	3:B:1384:HIS:HB2	2.54	0.43
3:A:1011:LEU:HD21	3:A:1017:THR:HG21	2.00	0.43
3:A:1120:SER:HB2	3:A:1123:ARG:NH2	2.32	0.43
3:A:1128:GLU:O	3:A:1132:ARG:HG3	2.19	0.43
3:A:1253:TYR:CE2	3:A:1261:MET:HA	2.53	0.43
3:A:1115:ASP:OD1	3:A:1120:SER:HB2	2.19	0.43
3:A:1206:THR:CG2	3:A:1208:TRP:CD1	3.01	0.43
3:A:1038:TYR:CZ	3:A:1058:PRO:HB3	2.54	0.43
3:A:1065:TYR:CE2	3:A:1098:LYS:HB3	2.51	0.43
3:A:1113:GLN:NE2	3:A:1115:ASP:N	2.65	0.43
3:A:1116:HIS:HB2	3:A:1300:TYR:HB3	2.00	0.43
3:A:1113:GLN:HG2	3:A:1146:PHE:CD1	2.54	0.42
3:A:1363:LEU:O	3:A:1370:TYR:HB2	2.19	0.42
3:B:1025:ASP:O	3:B:1029:LYS:HB2	2.18	0.42
3:A:1184:ARG:C	3:A:1186:THR:H	2.23	0.42
3:B:1295:LYS:HD2	3:B:1295:LYS:H	1.83	0.42
3:B:1009:ARG:HB2	3:B:1083:VAL:O	2.19	0.42
3:B:1099:LEU:C	3:B:1101:ASP:H	2.22	0.42
3:B:1046:ARG:NH2	3:B:1235:GLU:OE2	2.51	0.42
3:A:1018:LYS:HG2	3:A:1307:TYR:CG	2.54	0.42
3:B:1190:ASP:C	3:B:1192:SER:H	2.23	0.42
3:B:1218:HIS:HA	3:B:1222:LEU:HB2	2.00	0.42
3:B:1359:ARG:O	3:B:1363:LEU:CD1	2.68	0.42
3:B:1090:GLU:O	3:B:1094:ASN:HB2	2.19	0.42
3:B:1397:ILE:HA	3:B:1400:LYS:HE3	2.00	0.42
3:B:1332:ARG:N	3:B:1384:HIS:HD2	2.17	0.42
3:A:1012:GLU:H	3:A:1012:GLU:HG3	1.56	0.42
3:A:1191:VAL:HG13	3:A:1192:SER:N	2.35	0.42
3:B:1062:ALA:HA	3:B:1095:ASN:HD22	1.84	0.42
3:A:1115:ASP:OD1	3:A:1123:ARG:NH2	2.52	0.42
3:A:1198:ILE:HG21	3:A:1200:ARG:NH2	2.35	0.42

Continued on next page...

Continued from previous page...

Atom-1	Atom-2	Interatomic distance (Å)	Clash overlap (Å)
3:A:1234:LEU:HD12	3:A:1271:ILE:CG2	2.50	0.42
3:A:1310:LEU:HD11	3:A:1385:GLN:HB3	2.01	0.42
3:B:1187:TYR:O	3:B:1188:TRP:C	2.58	0.42
3:B:1261:MET:CE	3:B:1272:LEU:HB2	2.50	0.42
3:B:1289:PHE:CE2	3:B:1360:ILE:HG23	2.54	0.42
3:A:1041:ASP:OD1	3:A:1092:THR:HG23	2.20	0.41
3:B:1123:ARG:HH21	3:B:1123:ARG:HG2	1.85	0.41
3:B:1204:ARG:HA	3:B:1233:GLY:O	2.20	0.41
3:B:1318:ILE:HG12	3:B:1370:TYR:CE1	2.55	0.41
3:B:1322:TRP:NE1	3:B:1324:SER:HB3	2.35	0.41
2:D:1:DC:H2''	2:D:2:DT:C6	2.56	0.41
3:B:1366:ASP:O	3:B:1367:ARG:C	2.58	0.41
3:A:1194:ILE:HD12	3:A:1370:TYR:HE2	1.86	0.41
3:A:1008:ALA:HB3	3:A:1083:VAL:HA	2.02	0.41
3:A:1184:ARG:O	3:A:1186:THR:N	2.54	0.41
3:B:1242:ALA:O	3:B:1246:LYS:HG3	2.21	0.41
3:B:1369:LEU:O	3:B:1373:GLU:HG2	2.20	0.41
3:A:1191:VAL:HG21	3:A:1367:ARG:HB3	2.02	0.41
3:A:1223:LYS:N	3:A:1224:PRO:CD	2.83	0.41
3:B:1060:ILE:HD12	3:B:1064:GLU:OE1	2.20	0.41
3:B:1322:TRP:CD1	3:B:1324:SER:HB3	2.56	0.41
3:A:1358:GLU:O	3:A:1362:GLU:HB2	2.21	0.40
3:A:1115:ASP:CB	3:A:1120:SER:HB2	2.50	0.40
3:B:1190:ASP:C	3:B:1192:SER:N	2.74	0.40
3:B:1258:ILE:HD11	3:B:1283:ARG:CZ	2.51	0.40
3:B:1329:LEU:HB2	3:B:1338:LEU:CD1	2.52	0.40
3:A:1369:LEU:HD13	3:A:1372:ARG:NH2	2.37	0.40
3:B:1208:TRP:CH2	3:B:1209:LYS:HE2	2.56	0.40
3:B:1222:LEU:O	3:B:1227:LYS:HB2	2.22	0.40
3:B:1122:ARG:HG3	3:B:1122:ARG:NH2	2.35	0.40

There are no symmetry-related clashes.

5.3 Torsion angles [i](#)

5.3.1 Protein backbone [i](#)

In the following table, the Percentiles column shows the percent Ramachandran outliers of the chain as a percentile score with respect to all X-ray entries followed by that with respect to entries of similar resolution.

The Analysed column shows the number of residues for which the backbone conformation was analysed, and the total number of residues.

Mol	Chain	Analysed	Favoured	Allowed	Outliers	Percentiles	
3	A	376/403 (93%)	336 (89%)	36 (10%)	4 (1%)	14	20
3	B	373/403 (93%)	336 (90%)	31 (8%)	6 (2%)	9	13
All	All	749/806 (93%)	672 (90%)	67 (9%)	10 (1%)	12	17

All (10) Ramachandran outliers are listed below:

Mol	Chain	Res	Type
3	A	1352	ASP
3	B	1191	VAL
3	B	1335	ASN
3	A	1185	SER
3	B	1273	ASP
3	A	1121	LEU
3	A	1266	ASN
3	B	1041	ASP
3	B	1046	ARG
3	B	1205	THR

5.3.2 Protein sidechains [i](#)

In the following table, the Percentiles column shows the percent sidechain outliers of the chain as a percentile score with respect to all X-ray entries followed by that with respect to entries of similar resolution.

The Analysed column shows the number of residues for which the sidechain conformation was analysed, and the total number of residues.

Mol	Chain	Analysed	Rotameric	Outliers	Percentiles	
3	A	347/368 (94%)	338 (97%)	9 (3%)	46	66
3	B	344/368 (94%)	332 (96%)	12 (4%)	36	55
All	All	691/736 (94%)	670 (97%)	21 (3%)	41	61

All (21) residues with a non-rotameric sidechain are listed below:

Mol	Chain	Res	Type
3	A	1012	GLU
3	A	1116	HIS
3	A	1123	ARG

Continued on next page...

Continued from previous page...

Mol	Chain	Res	Type
3	A	1205	THR
3	A	1213	GLN
3	A	1262	ASN
3	A	1300	TYR
3	A	1328	ASN
3	A	1392	LYS
3	B	1012	GLU
3	B	1066	ASP
3	B	1119	LEU
3	B	1213	GLN
3	B	1244	LYS
3	B	1245	GLU
3	B	1257	GLU
3	B	1262	ASN
3	B	1291	TYR
3	B	1292	GLN
3	B	1295	LYS
3	B	1340	SER

Sometimes sidechains can be flipped to improve hydrogen bonding and reduce clashes. All (37) such sidechains are listed below:

Mol	Chain	Res	Type
3	A	1023	GLN
3	A	1089	GLN
3	A	1094	ASN
3	A	1102	ASN
3	A	1113	GLN
3	A	1175	GLN
3	A	1199	ASN
3	A	1213	GLN
3	A	1218	HIS
3	A	1262	ASN
3	A	1267	GLN
3	A	1270	GLN
3	A	1328	ASN
3	A	1341	HIS
3	A	1351	ASN
3	A	1383	GLN
3	A	1384	HIS
3	A	1394	GLN
3	B	1023	GLN
3	B	1052	HIS

Continued on next page...

Continued from previous page...

Mol	Chain	Res	Type
3	B	1094	ASN
3	B	1095	ASN
3	B	1113	GLN
3	B	1124	ASN
3	B	1175	GLN
3	B	1199	ASN
3	B	1213	GLN
3	B	1218	HIS
3	B	1255	ASN
3	B	1267	GLN
3	B	1270	GLN
3	B	1328	ASN
3	B	1335	ASN
3	B	1351	ASN
3	B	1383	GLN
3	B	1384	HIS
3	B	1394	GLN

5.3.3 RNA [i](#)

There are no RNA molecules in this entry.

5.4 Non-standard residues in protein, DNA, RNA chains [i](#)

There are no non-standard protein/DNA/RNA residues in this entry.

5.5 Carbohydrates [i](#)

There are no monosaccharides in this entry.

5.6 Ligand geometry [i](#)

9 ligands are modelled in this entry.

In the following table, the Counts columns list the number of bonds (or angles) for which Mogul statistics could be retrieved, the number of bonds (or angles) that are observed in the model and the number of bonds (or angles) that are defined in the Chemical Component Dictionary. The Link column lists molecule types, if any, to which the group is linked. The Z score for a bond length (or angle) is the number of standard deviations the observed value is removed from the expected value. A bond length (or angle) with $|Z| > 2$ is considered an outlier worth inspection. RMSZ is the root-mean-square of all Z scores of the bond lengths (or angles).

Mol	Type	Chain	Res	Link	Bond lengths			Bond angles		
					Counts	RMSZ	# Z > 2	Counts	RMSZ	# Z > 2
4	NCO	D	1003	-	6,6,6	1.43	0	-		
4	NCO	A	2004	-	6,6,6	1.32	0	-		
4	NCO	B	3002	-	6,6,6	1.25	0	-		
4	NCO	A	2002	-	6,6,6	1.17	0	-		
4	NCO	B	3004	-	6,6,6	1.34	0	-		
4	NCO	A	2003	-	6,6,6	1.39	0	-		
5	UDP	A	2001	-	24,26,26	0.57	0	37,40,40	0.58	1 (2%)
5	UDP	B	3001	-	24,26,26	0.58	0	37,40,40	0.62	1 (2%)
4	NCO	B	3003	-	6,6,6	1.33	0	-		

In the following table, the Chirals column lists the number of chiral outliers, the number of chiral centers analysed, the number of these observed in the model and the number defined in the Chemical Component Dictionary. Similar counts are reported in the Torsion and Rings columns. '-' means no outliers of that kind were identified.

Mol	Type	Chain	Res	Link	Chirals	Torsions	Rings
5	UDP	B	3001	-	-	5/16/32/32	0/2/2/2
5	UDP	A	2001	-	-	3/16/32/32	0/2/2/2

There are no bond length outliers.

All (2) bond angle outliers are listed below:

Mol	Chain	Res	Type	Atoms	Z	Observed(°)	Ideal(°)
5	A	2001	UDP	O2B-PB-O1B	2.24	119.46	110.68
5	B	3001	UDP	O2B-PB-O1B	2.18	119.22	110.68

There are no chirality outliers.

All (8) torsion outliers are listed below:

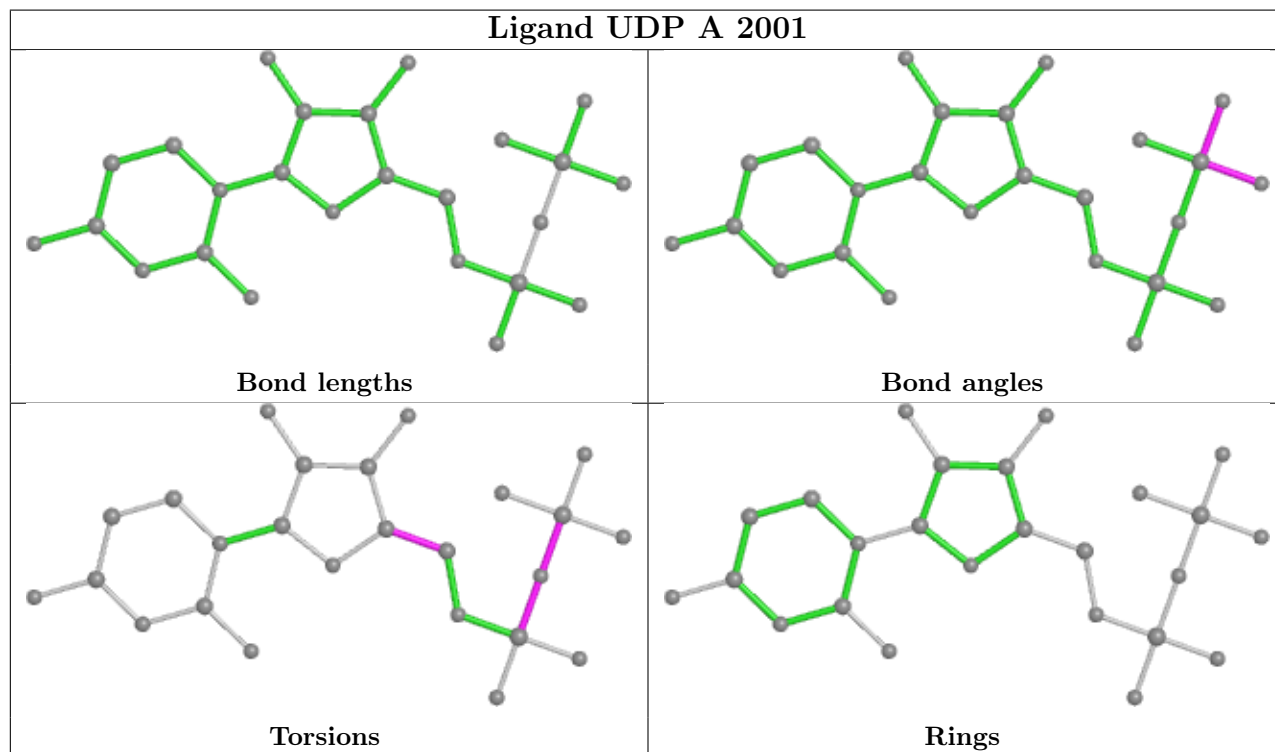
Mol	Chain	Res	Type	Atoms
5	A	2001	UDP	PA-O3A-PB-O1B
5	A	2001	UDP	PB-O3A-PA-O5'
5	B	3001	UDP	PB-O3A-PA-O5'
5	B	3001	UDP	O4'-C4'-C5'-O5'
5	A	2001	UDP	O4'-C4'-C5'-O5'
5	B	3001	UDP	PA-O3A-PB-O1B
5	B	3001	UDP	PB-O3A-PA-O2A
5	B	3001	UDP	C3'-C4'-C5'-O5'

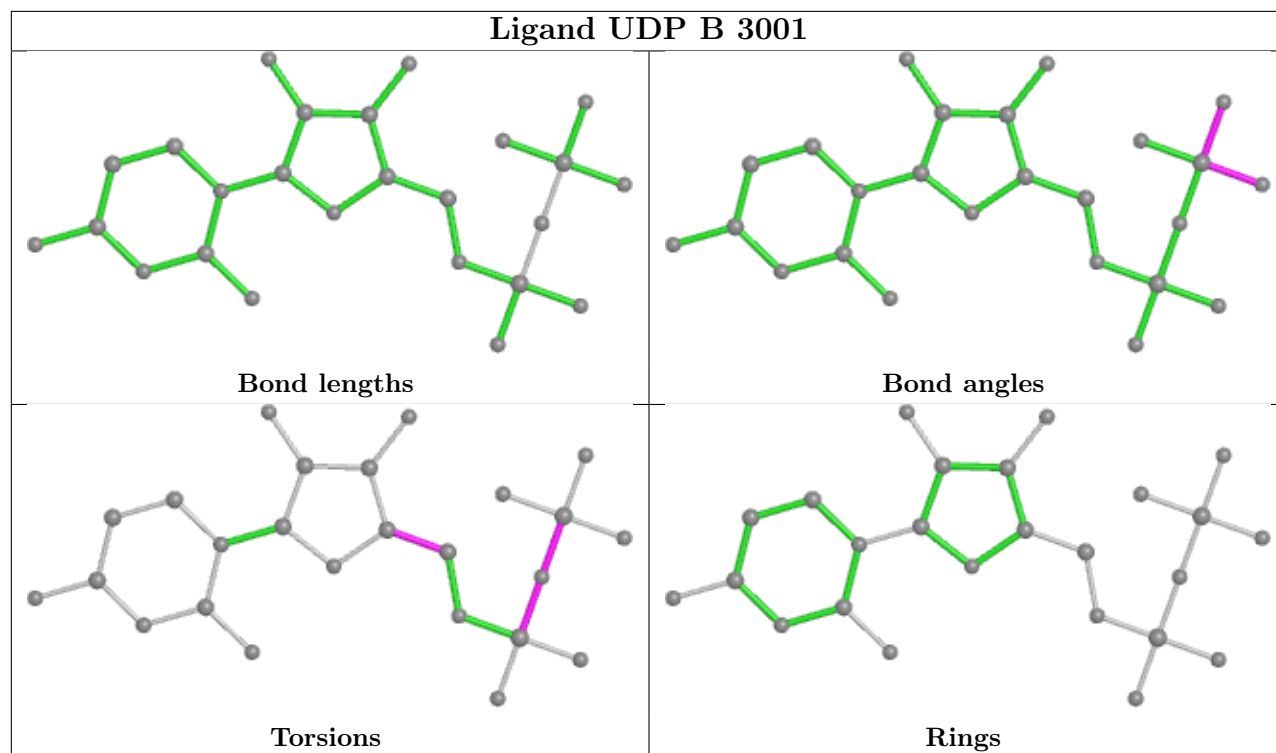
There are no ring outliers.

3 monomers are involved in 7 short contacts:

Mol	Chain	Res	Type	Clashes	Symm-Clashes
4	B	3002	NCO	4	0
4	A	2002	NCO	3	0
5	B	3001	UDP	1	0

The following is a two-dimensional graphical depiction of Mogul quality analysis of bond lengths, bond angles, torsion angles, and ring geometry for all instances of the Ligand of Interest. In addition, ligands with molecular weight > 250 and outliers as shown on the validation Tables will also be included. For torsion angles, if less than 5% of the Mogul distribution of torsion angles is within 10 degrees of the torsion angle in question, then that torsion angle is considered an outlier. Any bond that is central to one or more torsion angles identified as an outlier by Mogul will be highlighted in the graph. For rings, the root-mean-square deviation (RMSD) between the ring in question and similar rings identified by Mogul is calculated over all ring torsion angles. If the average RMSD is greater than 60 degrees and the minimal RMSD between the ring in question and any Mogul-identified rings is also greater than 60 degrees, then that ring is considered an outlier. The outliers are highlighted in purple. The color gray indicates Mogul did not find sufficient equivalents in the CSD to analyse the geometry.





5.7 Other polymers [i](#)

There are no such residues in this entry.

5.8 Polymer linkage issues [i](#)

There are no chain breaks in this entry.

6 Fit of model and data

6.1 Protein, DNA and RNA chains

In the following table, the column labelled ‘#RSRZ> 2’ contains the number (and percentage) of RSRZ outliers, followed by percent RSRZ outliers for the chain as percentile scores relative to all X-ray entries and entries of similar resolution. The OWAB column contains the minimum, median, 95th percentile and maximum values of the occupancy-weighted average B-factor per residue. The column labelled ‘Q< 0.9’ lists the number of (and percentage) of residues with an average occupancy less than 0.9.

Mol	Chain	Analysed	<RSRZ>	#RSRZ>2	OWAB(Å ²)	Q<0.9
1	C	12/12 (100%)	0.14	0 100 100	38, 62, 71, 72	0
2	D	12/12 (100%)	-0.24	0 100 100	50, 60, 74, 74	0
3	A	380/403 (94%)	0.28	26 (6%) 17 15	34, 60, 87, 100	0
3	B	377/403 (93%)	0.33	22 (5%) 23 22	39, 65, 84, 97	0
All	All	781/830 (94%)	0.29	48 (6%) 21 20	34, 62, 86, 100	0

All (48) RSRZ outliers are listed below:

Mol	Chain	Res	Type	RSRZ
3	A	1143	ASN	7.1
3	A	1145	ASP	5.3
3	B	1300	TYR	4.3
3	A	1296	LEU	3.8
3	B	1132	ARG	3.4
3	B	1400	LYS	3.3
3	A	1298	GLN	3.1
3	B	998	MET	3.0
3	B	1256	ARG	3.0
3	A	1300	TYR	3.0
3	B	1367	ARG	2.9
3	A	1361	LYS	2.9
3	B	1301	LEU	2.9
3	B	1169	PRO	2.8
3	A	1193	GLU	2.7
3	B	1342	ASP	2.7
3	B	1368	ALA	2.7
3	B	1299	LYS	2.7
3	B	1298	GLN	2.7
3	B	1054	SER	2.7
3	A	1256	ARG	2.6

Continued on next page...

Continued from previous page...

Mol	Chain	Res	Type	RSRZ
3	B	1142	ASP	2.6
3	A	1118	VAL	2.6
3	A	1079	ILE	2.5
3	B	1382	TYR	2.5
3	A	1119	LEU	2.5
3	A	1132	ARG	2.4
3	B	1338	LEU	2.4
3	A	1354	GLU	2.4
3	B	1037	VAL	2.4
3	A	1172	TYR	2.4
3	B	1334	ASP	2.3
3	A	1121	LEU	2.3
3	B	1297	ASN	2.3
3	A	1190	ASP	2.3
3	B	1089	GLN	2.3
3	A	1234	LEU	2.3
3	A	1301	LEU	2.2
3	A	1350	GLU	2.2
3	A	1260	LYS	2.2
3	A	1400	LYS	2.2
3	A	1101	ASP	2.2
3	A	1262	ASN	2.1
3	A	1142	ASP	2.0
3	B	1304	SER	2.0
3	A	1366	ASP	2.0
3	B	1039	ALA	2.0
3	A	1219	GLU	2.0

6.2 Non-standard residues in protein, DNA, RNA chains [i](#)

There are no non-standard protein/DNA/RNA residues in this entry.

6.3 Carbohydrates [i](#)

There are no monosaccharides in this entry.

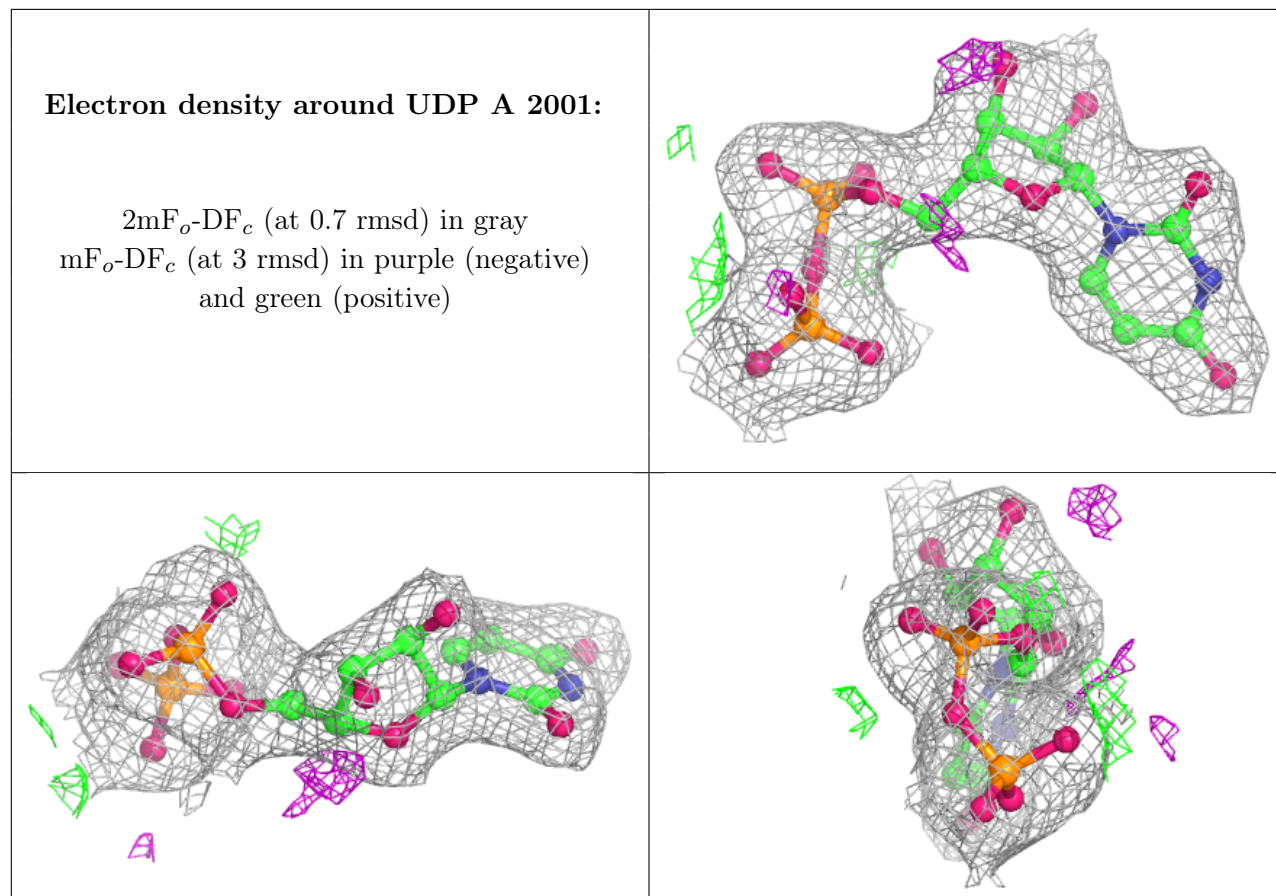
6.4 Ligands [i](#)

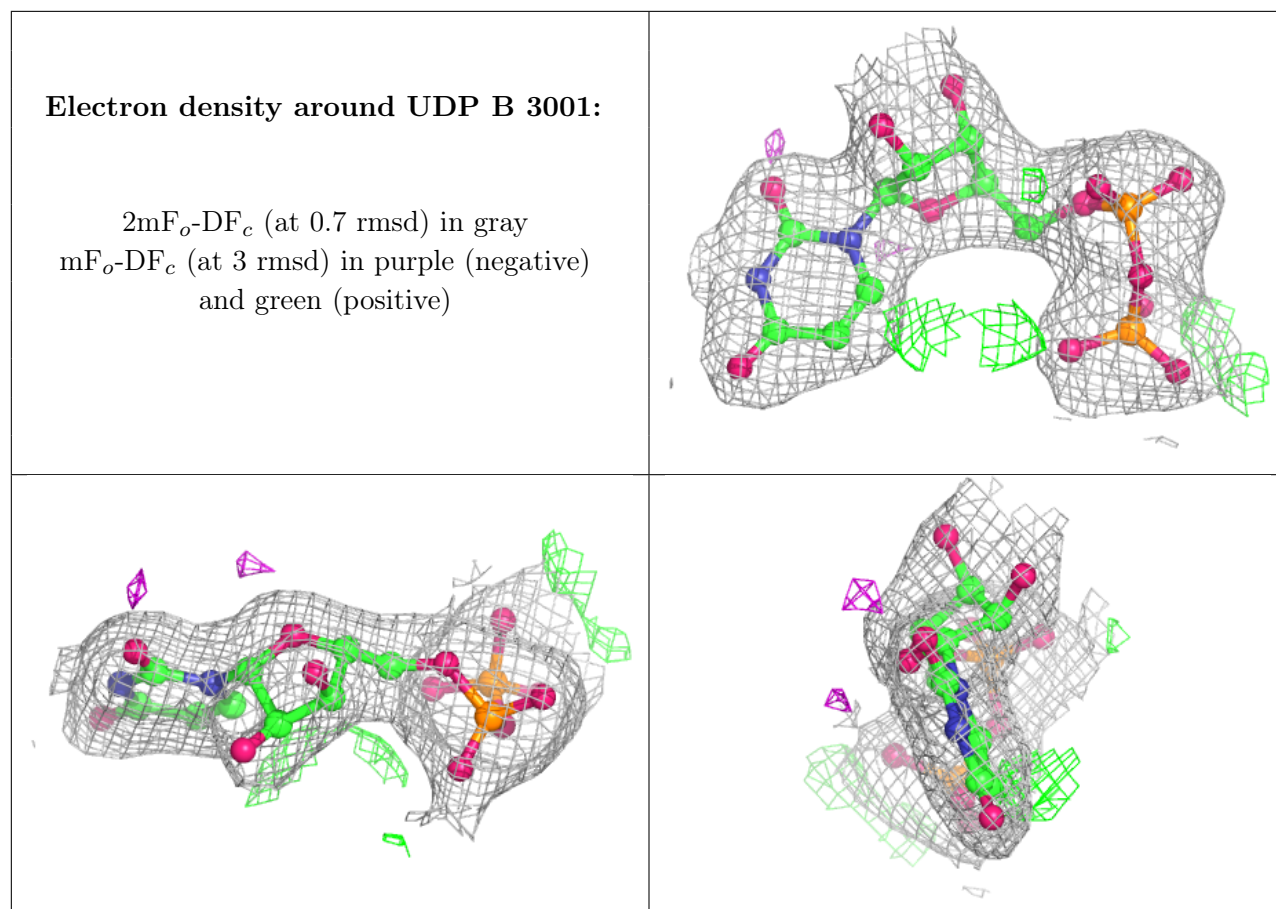
In the following table, the Atoms column lists the number of modelled atoms in the group and the number defined in the chemical component dictionary. The B-factors column lists the minimum,

median, 95th percentile and maximum values of B factors of atoms in the group. The column labelled 'Q < 0.9' lists the number of atoms with occupancy less than 0.9.

Mol	Type	Chain	Res	Atoms	RSCC	RSR	B-factors(Å ²)	Q<0.9
4	NCO	B	3004	7/7	0.92	0.20	71,71,71,73	7
4	NCO	A	2004	7/7	0.93	0.19	92,92,93,93	7
4	NCO	B	3003	7/7	0.94	0.17	98,99,99,99	0
4	NCO	B	3002	7/7	0.94	0.22	78,79,79,79	0
4	NCO	A	2002	7/7	0.96	0.19	63,63,65,66	0
4	NCO	A	2003	7/7	0.96	0.15	81,82,84,84	0
4	NCO	D	1003	7/7	0.97	0.14	88,89,89,91	0
5	UDP	A	2001	25/25	0.98	0.08	38,44,46,48	0
5	UDP	B	3001	25/25	0.98	0.10	37,43,47,49	0

The following is a graphical depiction of the model fit to experimental electron density of all instances of the Ligand of Interest. In addition, ligands with molecular weight > 250 and outliers as shown on the geometry validation Tables will also be included. Each fit is shown from different orientation to approximate a three-dimensional view.





6.5 Other polymers [i](#)

There are no such residues in this entry.