



# Full wwPDB X-ray Structure Validation Report ⓘ

Apr 28, 2024 – 09:23 am BST

PDB ID : 1W4B  
Title : P4 protein from PHI12 in complex with product (AMPCPP Mg 22C)  
Authors : Mancini, E.J.; Kainov, D.E.; Grimes, J.M.; Tuma, R.; Bamford, D.H.; Stuart, D.I.  
Deposited on : 2004-07-22  
Resolution : 2.30 Å(reported)

This is a Full wwPDB X-ray Structure Validation Report for a publicly released PDB entry.

We welcome your comments at [validation@mail.wwpdb.org](mailto:validation@mail.wwpdb.org)

A user guide is available at

<https://www.wwpdb.org/validation/2017/XrayValidationReportHelp>

with specific help available everywhere you see the ⓘ symbol.

The types of validation reports are described at

<http://www.wwpdb.org/validation/2017/FAQs#types>.

---

The following versions of software and data (see [references ⓘ](#)) were used in the production of this report:

MolProbity : 4.02b-467  
Mogul : 1.8.4, CSD as541be (2020)  
Xtriage (Phenix) : 1.13  
EDS : 2.36.2  
buster-report : 1.1.7 (2018)  
Percentile statistics : 20191225.v01 (using entries in the PDB archive December 25th 2019)  
Refmac : 5.8.0158  
CCP4 : 7.0.044 (Gargrove)  
Ideal geometry (proteins) : Engh & Huber (2001)  
Ideal geometry (DNA, RNA) : Parkinson et al. (1996)  
Validation Pipeline (wwPDB-VP) : 2.36.2

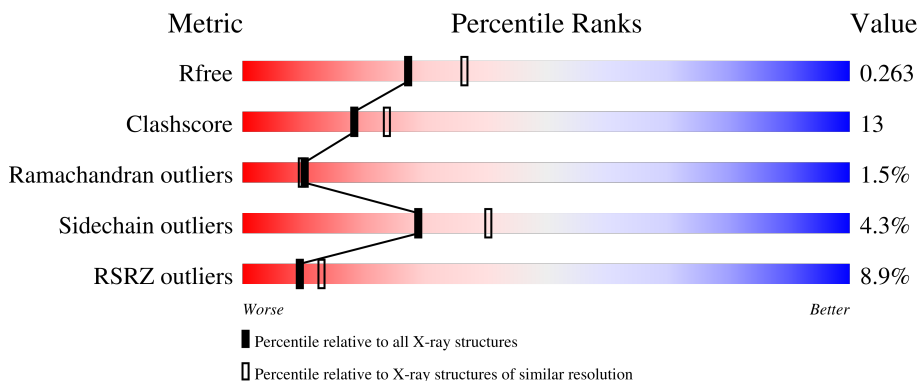
# 1 Overall quality at a glance

The following experimental techniques were used to determine the structure:

*X-RAY DIFFRACTION*

The reported resolution of this entry is 2.30 Å.

Percentile scores (ranging between 0-100) for global validation metrics of the entry are shown in the following graphic. The table shows the number of entries on which the scores are based.



Metric	Whole archive (#Entries)	Similar resolution (#Entries, resolution range(Å))
$R_{free}$	130704	5042 (2.30-2.30)
Clashscore	141614	5643 (2.30-2.30)
Ramachandran outliers	138981	5575 (2.30-2.30)
Sidechain outliers	138945	5575 (2.30-2.30)
RSRZ outliers	127900	4938 (2.30-2.30)

The table below summarises the geometric issues observed across the polymeric chains and their fit to the electron density. The red, orange, yellow and green segments of the lower bar indicate the fraction of residues that contain outliers for  $\geq 3$ , 2, 1 and 0 types of geometric quality criteria respectively. A grey segment represents the fraction of residues that are not modelled. The numeric value for each fraction is indicated below the corresponding segment, with a dot representing fractions  $\leq 5\%$ . The upper red bar (where present) indicates the fraction of residues that have poor fit to the electron density. The numeric value is given above the bar.

Mol	Chain	Length	Quality of chain
1	A	331	 8% 65% 21% • 13%
1	B	331	 8% 65% 20% • 13%
1	C	331	 7% 66% 19% • 13%

## 2 Entry composition [i](#)

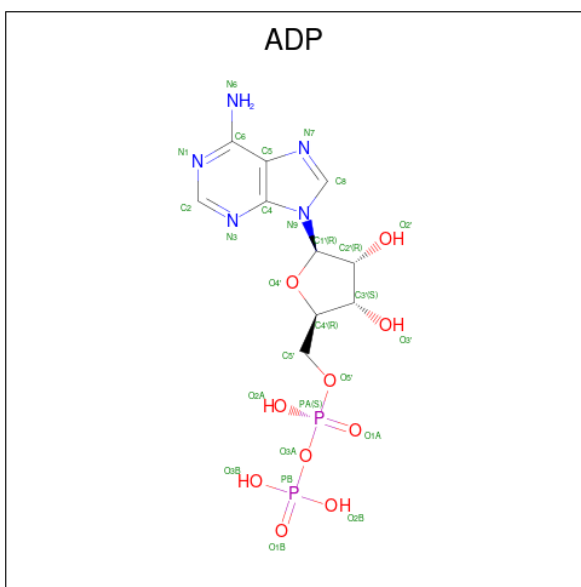
There are 4 unique types of molecules in this entry. The entry contains 7158 atoms, of which 0 are hydrogens and 0 are deuteriums.

In the tables below, the ZeroOcc column contains the number of atoms modelled with zero occupancy, the AltConf column contains the number of residues with at least one atom in alternate conformation and the Trace column contains the number of residues modelled with at most 2 atoms.

- Molecule 1 is a protein called NTPASE P4.

Mol	Chain	Residues	Atoms					ZeroOcc	AltConf	Trace
			Total	C	N	O	S			
1	A	288	Total 2170	C 1361	N 378	O 424	S 7	0	0	0
1	B	288	Total 2170	C 1361	N 378	O 424	S 7	0	0	0
1	C	288	Total 2170	C 1361	N 378	O 424	S 7	0	0	0

- Molecule 2 is ADENOSINE-5'-DIPHOSPHATE (three-letter code: ADP) (formula:  $C_{10}H_{15}N_5O_{10}P_2$ ).



Mol	Chain	Residues	Atoms					ZeroOcc	AltConf
			Total	C	N	O	P		
2	A	1	Total 27	C 10	N 5	O 10	P 2	0	0
2	B	1	Total 27	C 10	N 5	O 10	P 2	0	0
2	C	1	Total 27	C 10	N 5	O 10	P 2	0	0

- Molecule 3 is MAGNESIUM ION (three-letter code: MG) (formula: Mg).

Mol	Chain	Residues	Atoms	ZeroOcc	AltConf
3	A	1	Total Mg 1 1	0	0
3	B	1	Total Mg 1 1	0	0
3	C	1	Total Mg 1 1	0	0

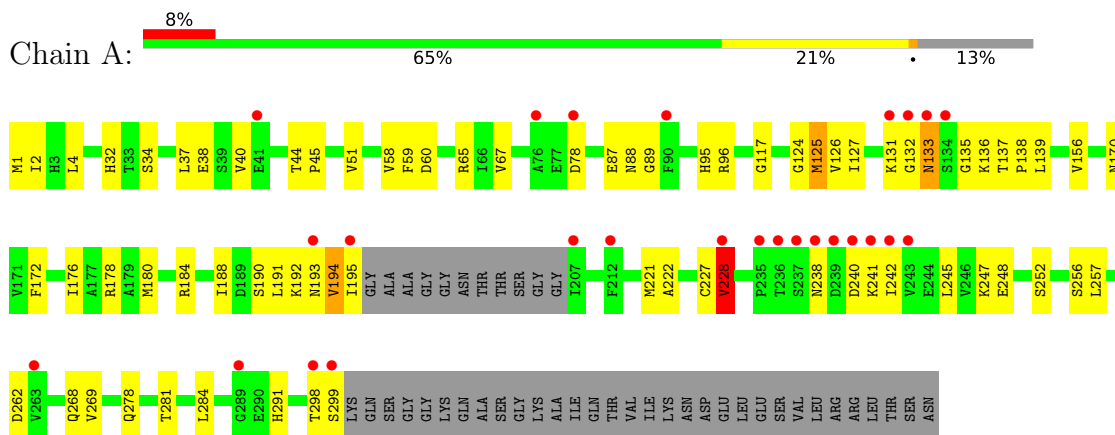
- Molecule 4 is water.

Mol	Chain	Residues	Atoms	ZeroOcc	AltConf
4	A	196	Total O 196 196	0	0
4	B	195	Total O 195 195	0	0
4	C	173	Total O 173 173	0	0

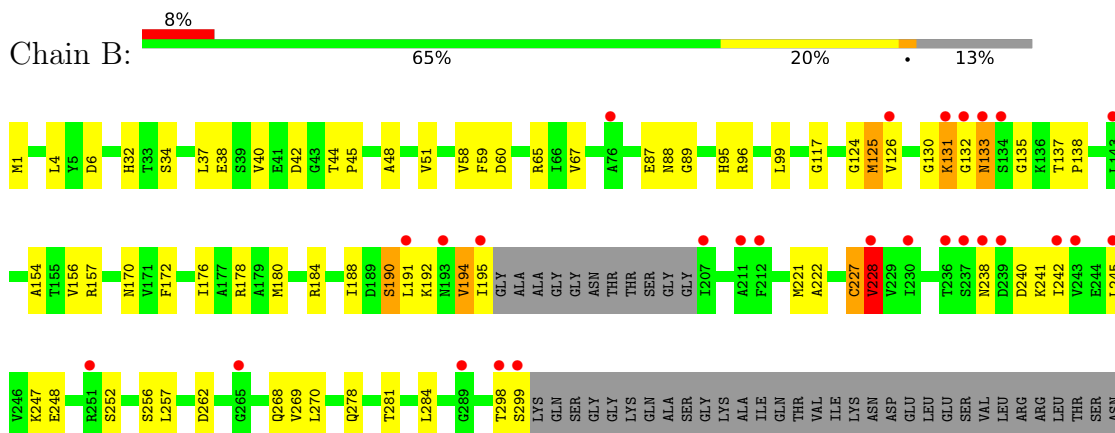
### 3 Residue-property plots [i](#)

These plots are drawn for all protein, RNA, DNA and oligosaccharide chains in the entry. The first graphic for a chain summarises the proportions of the various outlier classes displayed in the second graphic. The second graphic shows the sequence view annotated by issues in geometry and electron density. Residues are color-coded according to the number of geometric quality criteria for which they contain at least one outlier: green = 0, yellow = 1, orange = 2 and red = 3 or more. A red dot above a residue indicates a poor fit to the electron density ( $RSRZ > 2$ ). Stretches of 2 or more consecutive residues without any outlier are shown as a green connector. Residues present in the sample, but not in the model, are shown in grey.

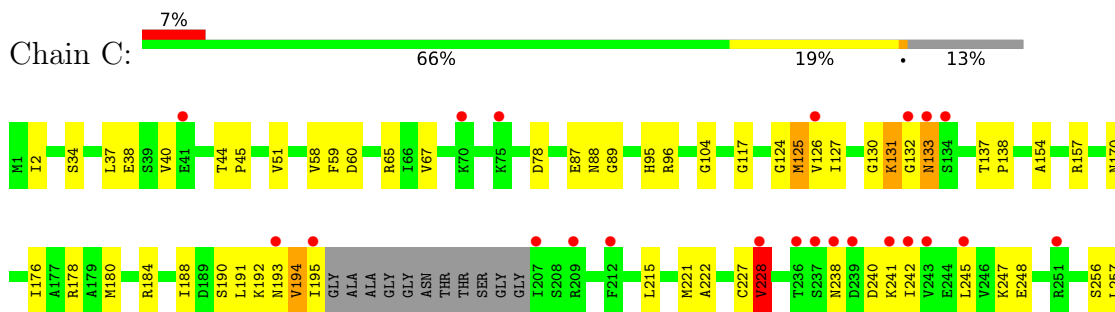
#### • Molecule 1: NTPASE P4

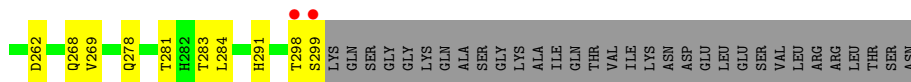


#### • Molecule 1: NTPASE P4



#### • Molecule 1: NTPASE P4





## 4 Data and refinement statistics

Property	Value	Source
Space group	I 2 2 2	Depositor
Cell constants a, b, c, $\alpha$ , $\beta$ , $\gamma$	105.30Å 129.30Å 158.90Å 90.00° 90.00° 90.00°	Depositor
Resolution (Å)	20.00 – 2.30 29.94 – 2.31	Depositor EDS
% Data completeness (in resolution range)	92.8 (20.00-2.30) 93.1 (29.94-2.31)	Depositor EDS
$R_{merge}$	0.08	Depositor
$R_{sym}$	(Not available)	Depositor
$\langle I/\sigma(I) \rangle$ <sup>1</sup>	5.82 (at 2.31Å)	Xtrriage
Refinement program	CNS 1.1	Depositor
R, $R_{free}$	0.236 , 0.196 0.258 , 0.263	Depositor DCC
$R_{free}$ test set	2244 reflections (5.01%)	wwPDB-VP
Wilson B-factor (Å <sup>2</sup> )	28.2	Xtrriage
Anisotropy	0.548	Xtrriage
Bulk solvent $k_{sol}$ (e/Å <sup>3</sup> ), $B_{sol}$ (Å <sup>2</sup> )	0.32 , 54.4	EDS
L-test for twinning <sup>2</sup>	$\langle  L  \rangle = 0.51$ , $\langle L^2 \rangle = 0.35$	Xtrriage
Estimated twinning fraction	No twinning to report.	Xtrriage
$F_o, F_c$ correlation	0.91	EDS
Total number of atoms	7158	wwPDB-VP
Average B, all atoms (Å <sup>2</sup> )	36.0	wwPDB-VP

Xtrriage's analysis on translational NCS is as follows: *The largest off-origin peak in the Patterson function is 5.22% of the height of the origin peak. No significant pseudotranslation is detected.*

<sup>1</sup>Intensities estimated from amplitudes.

<sup>2</sup>Theoretical values of  $\langle |L| \rangle$ ,  $\langle L^2 \rangle$  for acentric reflections are 0.5, 0.333 respectively for untwinned datasets, and 0.375, 0.2 for perfectly twinned datasets.

## 5 Model quality [i](#)

### 5.1 Standard geometry [i](#)

Bond lengths and bond angles in the following residue types are not validated in this section: ADP, MG

The Z score for a bond length (or angle) is the number of standard deviations the observed value is removed from the expected value. A bond length (or angle) with  $|Z| > 5$  is considered an outlier worth inspection. RMSZ is the root-mean-square of all Z scores of the bond lengths (or angles).

Mol	Chain	Bond lengths		Bond angles	
		RMSZ	# Z  >5	RMSZ	# Z  >5
1	A	0.56	0/2207	0.77	0/2989
1	B	0.56	0/2207	0.78	2/2989 (0.1%)
1	C	0.55	0/2207	0.76	0/2989
All	All	0.55	0/6621	0.77	2/8967 (0.0%)

There are no bond length outliers.

All (2) bond angle outliers are listed below:

Mol	Chain	Res	Type	Atoms	Z	Observed(°)	Ideal(°)
1	B	6	ASP	CB-CG-OD1	5.21	122.99	118.30
1	B	227	CYS	N-CA-C	5.06	124.66	111.00

There are no chirality outliers.

There are no planarity outliers.

### 5.2 Too-close contacts [i](#)

In the following table, the Non-H and H(model) columns list the number of non-hydrogen atoms and hydrogen atoms in the chain respectively. The H(added) column lists the number of hydrogen atoms added and optimized by MolProbity. The Clashes column lists the number of clashes within the asymmetric unit, whereas Symm-Clashes lists symmetry-related clashes.

Mol	Chain	Non-H	H(model)	H(added)	Clashes	Symm-Clashes
1	A	2170	0	2147	60	0
1	B	2170	0	2147	59	0
1	C	2170	0	2147	59	0
2	A	27	0	12	1	0
2	B	27	0	12	1	0
2	C	27	0	12	1	0

*Continued on next page...*



*Continued from previous page...*

Mol	Chain	Non-H	H(model)	H(added)	Clashes	Symm-Clashes
3	A	1	0	0	0	0
3	B	1	0	0	0	0
3	C	1	0	0	0	0
4	A	196	0	0	7	0
4	B	195	0	0	10	0
4	C	173	0	0	11	0
All	All	7158	0	6477	174	0

The all-atom clashscore is defined as the number of clashes found per 1000 atoms (including hydrogen atoms). The all-atom clashscore for this structure is 13.

All (174) close contacts within the same asymmetric unit are listed below, sorted by their clash magnitude.

Atom-1	Atom-2	Interatomic distance (Å)	Clash overlap (Å)
1:B:117:GLY:HA2	1:B:298:THR:HG23	1.50	0.94
1:A:117:GLY:HA2	1:A:298:THR:HG23	1.50	0.93
1:C:117:GLY:HA2	1:C:298:THR:HG23	1.51	0.91
1:B:184:ARG:O	1:B:227:CYS:O	1.92	0.88
1:C:184:ARG:O	1:C:227:CYS:O	1.93	0.85
1:C:104:GLY:HA3	4:C:2078:HOH:O	1.74	0.85
1:A:184:ARG:O	1:A:227:CYS:O	1.96	0.82
1:A:227:CYS:O	1:A:228:VAL:HG12	1.82	0.80
1:B:240:ASP:HB3	1:B:242:ILE:HD13	1.62	0.80
1:A:240:ASP:HB3	1:A:242:ILE:HD13	1.63	0.79
1:C:240:ASP:HB3	1:C:242:ILE:HD13	1.64	0.79
1:C:131:LYS:HE3	4:C:2089:HOH:O	1.86	0.75
1:A:136:LYS:NZ	4:A:2111:HOH:O	2.21	0.74
1:A:1:MET:HA	4:B:2137:HOH:O	1.89	0.72
1:B:227:CYS:O	1:B:228:VAL:HG12	1.91	0.71
1:C:227:CYS:O	1:C:228:VAL:HG12	1.92	0.69
1:A:124:GLY:O	1:A:228:VAL:HA	1.93	0.69
1:A:34:SER:O	1:A:38:GLU:HG2	1.93	0.69
1:B:124:GLY:O	1:B:228:VAL:HA	1.94	0.67
1:A:192:LYS:HB2	4:A:2149:HOH:O	1.95	0.67
1:C:124:GLY:O	1:C:228:VAL:HA	1.96	0.66
1:C:191:LEU:O	1:C:194:VAL:HG22	1.96	0.66
1:B:34:SER:O	1:B:38:GLU:HG2	1.96	0.65
1:C:34:SER:O	1:C:38:GLU:HG2	1.98	0.64
1:A:2:ILE:HD11	4:B:2142:HOH:O	1.97	0.63
1:B:247:LYS:HB2	1:B:247:LYS:NZ	2.14	0.63
1:A:191:LEU:O	1:A:194:VAL:HG22	1.99	0.62

*Continued on next page...*

*Continued from previous page...*

Atom-1	Atom-2	Interatomic distance (Å)	Clash overlap (Å)
1:A:247:LYS:NZ	1:A:247:LYS:HB2	2.14	0.62
1:C:247:LYS:HB2	1:C:247:LYS:NZ	2.15	0.62
1:A:180:MET:HE1	1:A:222:ALA:N	2.13	0.62
1:C:51:VAL:HB	1:C:170:ASN:OD1	1.99	0.62
1:B:191:LEU:O	1:B:194:VAL:HG22	1.99	0.61
1:B:180:MET:HE1	1:B:222:ALA:N	2.16	0.61
1:C:283:THR:HG21	4:C:2153:HOH:O	2.01	0.60
1:B:190:SER:OG	1:B:192:LYS:HB3	2.02	0.59
1:A:51:VAL:HB	1:A:170:ASN:OD1	2.03	0.59
1:B:51:VAL:HB	1:B:170:ASN:OD1	2.04	0.58
1:B:240:ASP:OD1	1:B:241:LYS:N	2.37	0.57
1:C:180:MET:HE1	1:C:222:ALA:N	2.19	0.57
1:C:190:SER:OG	1:C:192:LYS:HB3	2.04	0.57
1:C:126:VAL:HG22	1:C:256:SER:HB2	1.87	0.56
1:A:240:ASP:OD1	1:A:241:LYS:N	2.39	0.56
1:B:194:VAL:CG2	1:B:195:ILE:N	2.68	0.56
1:A:194:VAL:CG2	1:A:195:ILE:N	2.68	0.56
1:C:125:MET:HG3	1:C:126:VAL:N	2.21	0.55
1:C:194:VAL:CG2	1:C:195:ILE:N	2.69	0.55
1:A:190:SER:OG	1:A:192:LYS:HB3	2.06	0.55
1:B:252:SER:OG	1:C:192:LYS:HE2	2.08	0.54
1:A:65:ARG:HD2	4:A:2068:HOH:O	2.07	0.54
1:C:240:ASP:OD1	1:C:241:LYS:N	2.39	0.54
4:B:2021:HOH:O	1:C:291:HIS:HD2	1.90	0.54
1:B:137:THR:HB	1:B:138:PRO:HD3	1.90	0.54
1:A:178:ARG:HB2	1:A:178:ARG:NH1	2.23	0.53
1:A:126:VAL:HG22	1:A:256:SER:HB2	1.90	0.53
1:B:247:LYS:HB2	1:B:247:LYS:HZ3	1.73	0.52
1:A:194:VAL:HG23	1:A:195:ILE:N	2.25	0.52
1:A:240:ASP:HB3	1:A:242:ILE:CD1	2.37	0.52
1:B:125:MET:HG3	1:B:126:VAL:N	2.24	0.52
1:B:67:VAL:HA	1:B:89:GLY:HA2	1.91	0.52
1:C:67:VAL:HA	1:C:89:GLY:HA2	1.92	0.52
1:B:194:VAL:HG23	1:B:195:ILE:N	2.25	0.51
1:C:178:ARG:HB2	1:C:178:ARG:NH1	2.25	0.51
1:A:252:SER:OG	1:B:192:LYS:HE2	2.10	0.51
1:B:178:ARG:HB2	1:B:178:ARG:NH1	2.26	0.51
1:C:65:ARG:CD	4:C:2062:HOH:O	2.58	0.51
1:A:59:PHE:CE2	1:A:65:ARG:HG3	2.46	0.50
1:A:125:MET:HG3	1:A:126:VAL:N	2.26	0.50
1:B:133:ASN:HA	2:B:700:ADP:O1B	2.12	0.50

*Continued on next page...*

*Continued from previous page...*

Atom-1	Atom-2	Interatomic distance (Å)	Clash overlap (Å)
1:B:298:THR:HG22	1:B:299:SER:N	2.27	0.50
1:C:137:THR:HB	1:C:138:PRO:HD3	1.93	0.50
1:A:269:VAL:O	1:A:281:THR:HA	2.12	0.50
1:A:133:ASN:HA	2:A:700:ADP:O1B	2.12	0.49
1:B:65:ARG:CD	4:B:2133:HOH:O	2.60	0.49
1:C:157:ARG:HG3	4:C:2109:HOH:O	2.11	0.49
1:C:247:LYS:HB2	1:C:247:LYS:HZ2	1.76	0.49
1:C:298:THR:HG22	1:C:299:SER:N	2.27	0.49
1:B:59:PHE:CE2	1:B:65:ARG:HG3	2.47	0.49
1:C:194:VAL:HG23	1:C:195:ILE:N	2.26	0.49
1:C:65:ARG:HD2	4:C:2062:HOH:O	2.11	0.49
1:C:133:ASN:HA	2:C:700:ADP:O1B	2.12	0.49
1:A:180:MET:HE1	1:A:221:MET:C	2.34	0.48
1:A:137:THR:HB	1:A:138:PRO:HD3	1.96	0.48
1:A:227:CYS:O	1:A:228:VAL:CG1	2.55	0.48
1:B:40:VAL:HG13	1:B:44:THR:HB	1.96	0.48
1:A:298:THR:HG22	1:A:299:SER:N	2.29	0.48
1:C:291:HIS:HE1	4:C:2081:HOH:O	1.97	0.48
1:A:32:HIS:HE1	4:A:2083:HOH:O	1.96	0.48
1:B:180:MET:HE1	1:B:221:MET:C	2.35	0.48
1:A:37:LEU:O	1:A:40:VAL:HB	2.13	0.47
1:A:67:VAL:HA	1:A:89:GLY:HA2	1.95	0.47
1:A:291:HIS:HE1	4:A:2180:HOH:O	1.96	0.47
1:B:95:HIS:HD2	1:B:96:ARG:O	1.97	0.47
1:B:126:VAL:HG22	1:B:256:SER:HB2	1.96	0.47
4:B:2075:HOH:O	1:C:67:VAL:HG11	2.14	0.47
1:C:240:ASP:C	1:C:241:LYS:HD2	2.35	0.47
1:B:1:MET:HA	4:C:2123:HOH:O	2.15	0.47
1:A:228:VAL:HG13	1:A:228:VAL:O	2.15	0.46
1:A:240:ASP:C	1:A:241:LYS:HD2	2.36	0.46
1:C:40:VAL:HG13	1:C:44:THR:HB	1.97	0.46
1:C:59:PHE:CE2	1:C:65:ARG:HG3	2.50	0.46
1:A:45:PRO:HB3	1:A:58:VAL:HG11	1.96	0.46
1:B:37:LEU:O	1:B:40:VAL:HB	2.15	0.46
1:A:172:PHE:O	1:A:176:ILE:HG12	2.16	0.46
1:B:269:VAL:O	1:B:281:THR:HA	2.16	0.46
1:B:172:PHE:O	1:B:176:ILE:HG12	2.16	0.46
1:C:104:GLY:CA	4:C:2078:HOH:O	2.48	0.46
1:B:228:VAL:HG13	1:B:228:VAL:O	2.15	0.45
1:C:193:ASN:ND2	4:C:2127:HOH:O	2.49	0.45
1:A:95:HIS:HD2	1:A:96:ARG:O	2.00	0.45

*Continued on next page...*

*Continued from previous page...*

Atom-1	Atom-2	Interatomic distance (Å)	Clash overlap (Å)
1:B:240:ASP:C	1:B:241:LYS:HD2	2.36	0.45
1:B:190:SER:OG	1:B:192:LYS:CB	2.64	0.45
1:B:228:VAL:O	1:B:228:VAL:CG1	2.65	0.45
1:B:240:ASP:HB3	1:B:242:ILE:CD1	2.37	0.45
1:C:240:ASP:HB3	1:C:242:ILE:CD1	2.39	0.45
1:A:190:SER:OG	1:A:192:LYS:CB	2.65	0.45
1:B:42:ASP:HA	4:B:2047:HOH:O	2.15	0.45
1:C:269:VAL:O	1:C:281:THR:HA	2.17	0.45
1:C:125:MET:HE3	1:C:127:ILE:HD11	2.00	0.44
1:B:117:GLY:HA2	1:B:298:THR:CG2	2.36	0.44
1:B:245:LEU:HD12	1:B:245:LEU:N	2.33	0.44
1:C:40:VAL:CG1	1:C:44:THR:HB	2.48	0.43
1:A:156:VAL:HG21	1:A:176:ILE:HD13	1.99	0.43
1:A:176:ILE:HD12	1:A:188:ILE:HD11	2.00	0.43
1:C:228:VAL:O	1:C:228:VAL:HG13	2.17	0.43
1:A:4:LEU:HD23	1:B:154:ALA:HA	2.00	0.43
1:A:247:LYS:HB2	1:A:247:LYS:HZ3	1.82	0.43
1:B:130:GLY:O	1:B:131:LYS:C	2.56	0.43
1:B:65:ARG:HD3	4:B:2133:HOH:O	2.17	0.43
1:B:227:CYS:O	1:B:228:VAL:CG1	2.64	0.43
1:C:60:ASP:OD1	1:C:60:ASP:C	2.57	0.43
1:A:87:GLU:HG2	1:A:88:ASN:OD1	2.19	0.43
1:C:176:ILE:HD12	1:C:188:ILE:HD11	2.00	0.43
1:B:60:ASP:C	1:B:60:ASP:OD1	2.56	0.43
1:A:156:VAL:HG11	1:A:176:ILE:CD1	2.49	0.42
1:A:193:ASN:HA	4:A:2151:HOH:O	2.19	0.42
1:B:270:LEU:HD12	1:B:270:LEU:N	2.35	0.42
1:C:37:LEU:O	1:C:40:VAL:HB	2.19	0.42
1:C:180:MET:HE1	1:C:221:MET:C	2.39	0.42
1:C:190:SER:OG	1:C:192:LYS:CB	2.66	0.42
1:A:247:LYS:HB2	1:A:247:LYS:HZ2	1.83	0.42
1:B:87:GLU:HG2	1:B:88:ASN:OD1	2.20	0.42
1:B:65:ARG:HD2	4:B:2133:HOH:O	2.17	0.42
1:C:45:PRO:HB3	1:C:58:VAL:HG11	2.01	0.42
1:B:176:ILE:HD12	1:B:188:ILE:HD11	2.01	0.42
1:A:65:ARG:CD	4:A:2068:HOH:O	2.67	0.41
1:B:40:VAL:CG1	1:B:44:THR:HB	2.50	0.41
1:A:2:ILE:HG12	1:A:78:ASP:OD1	2.21	0.41
1:A:227:CYS:O	1:A:228:VAL:CB	2.67	0.41
1:A:245:LEU:N	1:A:245:LEU:HD12	2.35	0.41
1:B:48:ALA:HB2	1:B:99:LEU:HD11	2.02	0.41

*Continued on next page...*

Continued from previous page...

Atom-1	Atom-2	Interatomic distance (Å)	Clash overlap (Å)
1:C:95:HIS:HD2	1:C:96:ARG:O	2.03	0.41
1:A:125:MET:HE3	1:A:127:ILE:HD11	2.03	0.41
1:C:117:GLY:CA	1:C:298:THR:HG23	2.37	0.41
1:C:215:LEU:HD13	1:C:215:LEU:HA	1.89	0.41
1:C:245:LEU:HD12	1:C:245:LEU:N	2.35	0.41
1:A:40:VAL:HG13	1:A:44:THR:HB	2.02	0.41
1:A:135:GLY:C	1:A:138:PRO:HD2	2.41	0.41
1:B:135:GLY:C	1:B:138:PRO:HD2	2.41	0.41
1:A:60:ASP:OD1	1:A:60:ASP:C	2.59	0.41
1:C:87:GLU:HG2	1:C:88:ASN:OD1	2.21	0.41
1:C:130:GLY:O	1:C:131:LYS:C	2.58	0.41
1:A:139:LEU:HD13	1:A:139:LEU:C	2.42	0.41
1:A:228:VAL:CG1	1:A:228:VAL:O	2.68	0.41
1:C:65:ARG:HD3	4:C:2062:HOH:O	2.20	0.41
1:B:191:LEU:HG	1:B:194:VAL:HG21	2.03	0.40
1:B:4:LEU:HD23	1:C:154:ALA:HA	2.03	0.40
1:B:32:HIS:HE1	4:B:2084:HOH:O	2.04	0.40
1:B:156:VAL:HG21	1:B:176:ILE:HD13	2.02	0.40
1:C:191:LEU:HG	1:C:194:VAL:HG21	2.03	0.40
1:C:2:ILE:HG12	1:C:78:ASP:OD1	2.22	0.40
1:B:45:PRO:HB3	1:B:58:VAL:HG11	2.04	0.40
1:B:157:ARG:HG3	4:B:2122:HOH:O	2.20	0.40
1:A:191:LEU:HG	1:A:194:VAL:HG21	2.02	0.40
1:C:228:VAL:O	1:C:228:VAL:CG1	2.69	0.40

There are no symmetry-related clashes.

## 5.3 Torsion angles [i](#)

### 5.3.1 Protein backbone [i](#)

In the following table, the Percentiles column shows the percent Ramachandran outliers of the chain as a percentile score with respect to all X-ray entries followed by that with respect to entries of similar resolution.

The Analysed column shows the number of residues for which the backbone conformation was analysed, and the total number of residues.

Mol	Chain	Analysed	Favoured	Allowed	Outliers	Percentiles
1	A	284/331 (86%)	267 (94%)	13 (5%)	4 (1%)	<b>11</b> <b>11</b>

Continued on next page...

Continued from previous page...

Mol	Chain	Analysed	Favoured	Allowed	Outliers	Percentiles	
1	B	284/331 (86%)	267 (94%)	12 (4%)	5 (2%)	8	7
1	C	284/331 (86%)	267 (94%)	13 (5%)	4 (1%)	11	11
All	All	852/993 (86%)	801 (94%)	38 (4%)	13 (2%)	10	10

All (13) Ramachandran outliers are listed below:

Mol	Chain	Res	Type
1	A	132	GLY
1	B	132	GLY
1	C	132	GLY
1	A	131	LYS
1	A	238	ASN
1	B	131	LYS
1	B	238	ASN
1	C	131	LYS
1	C	238	ASN
1	A	228	VAL
1	B	190	SER
1	B	228	VAL
1	C	228	VAL

### 5.3.2 Protein sidechains [i](#)

In the following table, the Percentiles column shows the percent sidechain outliers of the chain as a percentile score with respect to all X-ray entries followed by that with respect to entries of similar resolution.

The Analysed column shows the number of residues for which the sidechain conformation was analysed, and the total number of residues.

Mol	Chain	Analysed	Rotameric	Outliers	Percentiles	
1	A	234/265 (88%)	224 (96%)	10 (4%)	29	40
1	B	234/265 (88%)	224 (96%)	10 (4%)	29	40
1	C	234/265 (88%)	224 (96%)	10 (4%)	29	40
All	All	702/795 (88%)	672 (96%)	30 (4%)	29	40

All (30) residues with a non-rotameric sidechain are listed below:

Mol	Chain	Res	Type
1	A	125	MET

Continued on next page...

*Continued from previous page...*

Mol	Chain	Res	Type
1	A	133	ASN
1	A	194	VAL
1	A	228	VAL
1	A	248	GLU
1	A	257	LEU
1	A	262	ASP
1	A	268	GLN
1	A	278	GLN
1	A	284	LEU
1	B	125	MET
1	B	133	ASN
1	B	194	VAL
1	B	228	VAL
1	B	248	GLU
1	B	257	LEU
1	B	262	ASP
1	B	268	GLN
1	B	278	GLN
1	B	284	LEU
1	C	125	MET
1	C	133	ASN
1	C	194	VAL
1	C	228	VAL
1	C	248	GLU
1	C	257	LEU
1	C	262	ASP
1	C	268	GLN
1	C	278	GLN
1	C	284	LEU

Sometimes sidechains can be flipped to improve hydrogen bonding and reduce clashes. All (27) such sidechains are listed below:

Mol	Chain	Res	Type
1	A	32	HIS
1	A	95	HIS
1	A	133	ASN
1	A	238	ASN
1	A	253	ASN
1	A	268	GLN
1	A	278	GLN
1	A	291	HIS
1	A	297	HIS

*Continued on next page...*

*Continued from previous page...*

Mol	Chain	Res	Type
1	B	32	HIS
1	B	95	HIS
1	B	133	ASN
1	B	182	GLN
1	B	238	ASN
1	B	253	ASN
1	B	268	GLN
1	B	278	GLN
1	B	291	HIS
1	B	297	HIS
1	C	95	HIS
1	C	133	ASN
1	C	182	GLN
1	C	238	ASN
1	C	268	GLN
1	C	278	GLN
1	C	291	HIS
1	C	297	HIS

### 5.3.3 RNA [i](#)

There are no RNA molecules in this entry.

## 5.4 Non-standard residues in protein, DNA, RNA chains [i](#)

There are no non-standard protein/DNA/RNA residues in this entry.

## 5.5 Carbohydrates [i](#)

There are no monosaccharides in this entry.

## 5.6 Ligand geometry [i](#)

Of 6 ligands modelled in this entry, 3 are monoatomic - leaving 3 for Mogul analysis.

In the following table, the Counts columns list the number of bonds (or angles) for which Mogul statistics could be retrieved, the number of bonds (or angles) that are observed in the model and the number of bonds (or angles) that are defined in the Chemical Component Dictionary. The Link column lists molecule types, if any, to which the group is linked. The Z score for a bond length (or angle) is the number of standard deviations the observed value is removed from the



expected value. A bond length (or angle) with  $|Z| > 2$  is considered an outlier worth inspection. RMSZ is the root-mean-square of all Z scores of the bond lengths (or angles).

Mol	Type	Chain	Res	Link	Bond lengths			Bond angles		
					Counts	RMSZ	# Z  > 2	Counts	RMSZ	# Z  > 2
2	ADP	A	700	-	24,29,29	1.80	6 (25%)	29,45,45	1.81	7 (24%)
2	ADP	C	700	3	24,29,29	1.77	6 (25%)	29,45,45	1.83	7 (24%)
2	ADP	B	700	-	24,29,29	1.78	5 (20%)	29,45,45	1.81	7 (24%)

In the following table, the Chirals column lists the number of chiral outliers, the number of chiral centers analysed, the number of these observed in the model and the number defined in the Chemical Component Dictionary. Similar counts are reported in the Torsion and Rings columns. '-' means no outliers of that kind were identified.

Mol	Type	Chain	Res	Link	Chirals	Torsions	Rings
2	ADP	A	700	-	-	4/12/32/32	0/3/3/3
2	ADP	C	700	3	-	4/12/32/32	0/3/3/3
2	ADP	B	700	-	-	4/12/32/32	0/3/3/3

All (17) bond length outliers are listed below:

Mol	Chain	Res	Type	Atoms	Z	Observed(Å)	Ideal(Å)
2	A	700	ADP	O4'-C1'	4.84	1.47	1.41
2	B	700	ADP	O4'-C1'	4.78	1.47	1.41
2	C	700	ADP	O4'-C1'	4.73	1.47	1.41
2	B	700	ADP	C2-N3	3.78	1.38	1.32
2	A	700	ADP	C2-N3	3.66	1.38	1.32
2	C	700	ADP	C2-N3	3.33	1.37	1.32
2	B	700	ADP	C5-N7	-2.97	1.28	1.39
2	C	700	ADP	C5-N7	-2.94	1.29	1.39
2	A	700	ADP	C5-N7	-2.94	1.29	1.39
2	A	700	ADP	C2'-C1'	2.41	1.57	1.53
2	C	700	ADP	PA-O2A	-2.40	1.44	1.55
2	B	700	ADP	PA-O2A	-2.33	1.44	1.55
2	C	700	ADP	C2'-C1'	2.27	1.57	1.53
2	B	700	ADP	C2'-C1'	2.24	1.57	1.53
2	A	700	ADP	PA-O2A	-2.19	1.45	1.55
2	A	700	ADP	C3'-C4'	-2.16	1.47	1.53
2	C	700	ADP	C3'-C4'	-2.12	1.47	1.53

All (21) bond angle outliers are listed below:

Mol	Chain	Res	Type	Atoms	Z	Observed(°)	Ideal(°)
2	C	700	ADP	N3-C2-N1	-6.54	118.45	128.68
2	B	700	ADP	N3-C2-N1	-6.47	118.57	128.68
2	A	700	ADP	N3-C2-N1	-6.41	118.66	128.68
2	A	700	ADP	O4'-C1'-C2'	-3.19	102.27	106.93
2	C	700	ADP	O4'-C1'-C2'	-3.15	102.32	106.93
2	B	700	ADP	O4'-C1'-C2'	-2.94	102.63	106.93
2	C	700	ADP	O5'-C5'-C4'	2.60	117.94	108.99
2	B	700	ADP	O5'-C5'-C4'	2.59	117.91	108.99
2	A	700	ADP	O5'-C5'-C4'	2.51	117.64	108.99
2	A	700	ADP	C5'-C4'-C3'	-2.47	105.91	115.18
2	C	700	ADP	C5'-C4'-C3'	-2.43	106.06	115.18
2	B	700	ADP	C5'-C4'-C3'	-2.35	106.36	115.18
2	C	700	ADP	O3B-PB-O3A	2.29	112.31	104.64
2	A	700	ADP	O3B-PB-O3A	2.23	112.10	104.64
2	B	700	ADP	O3B-PB-O3A	2.22	112.08	104.64
2	A	700	ADP	O2'-C2'-C1'	2.22	119.04	110.85
2	C	700	ADP	O2'-C2'-C1'	2.16	118.83	110.85
2	B	700	ADP	O2'-C2'-C1'	2.15	118.81	110.85
2	B	700	ADP	C4-C5-N7	-2.14	107.17	109.40
2	A	700	ADP	C4-C5-N7	-2.05	107.27	109.40
2	C	700	ADP	C2-N1-C6	2.03	122.23	118.75

There are no chirality outliers.

All (12) torsion outliers are listed below:

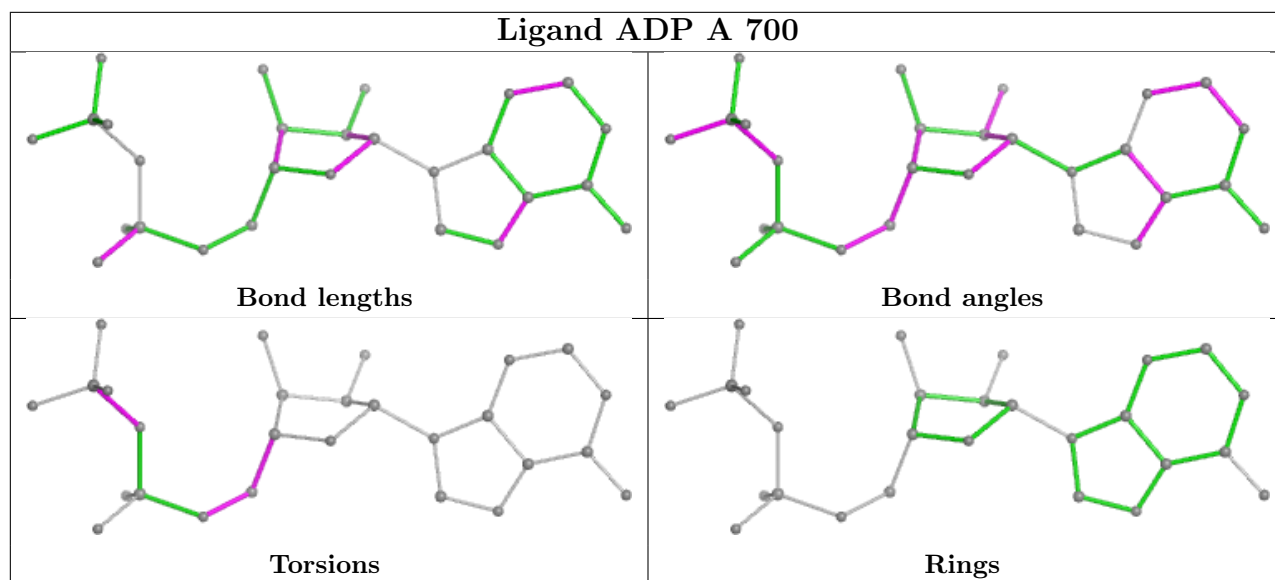
Mol	Chain	Res	Type	Atoms
2	A	700	ADP	C3'-C4'-C5'-O5'
2	B	700	ADP	C3'-C4'-C5'-O5'
2	C	700	ADP	C3'-C4'-C5'-O5'
2	A	700	ADP	O4'-C4'-C5'-O5'
2	B	700	ADP	O4'-C4'-C5'-O5'
2	C	700	ADP	O4'-C4'-C5'-O5'
2	A	700	ADP	C4'-C5'-O5'-PA
2	B	700	ADP	C4'-C5'-O5'-PA
2	C	700	ADP	C4'-C5'-O5'-PA
2	A	700	ADP	PA-O3A-PB-O1B
2	B	700	ADP	PA-O3A-PB-O1B
2	C	700	ADP	PA-O3A-PB-O1B

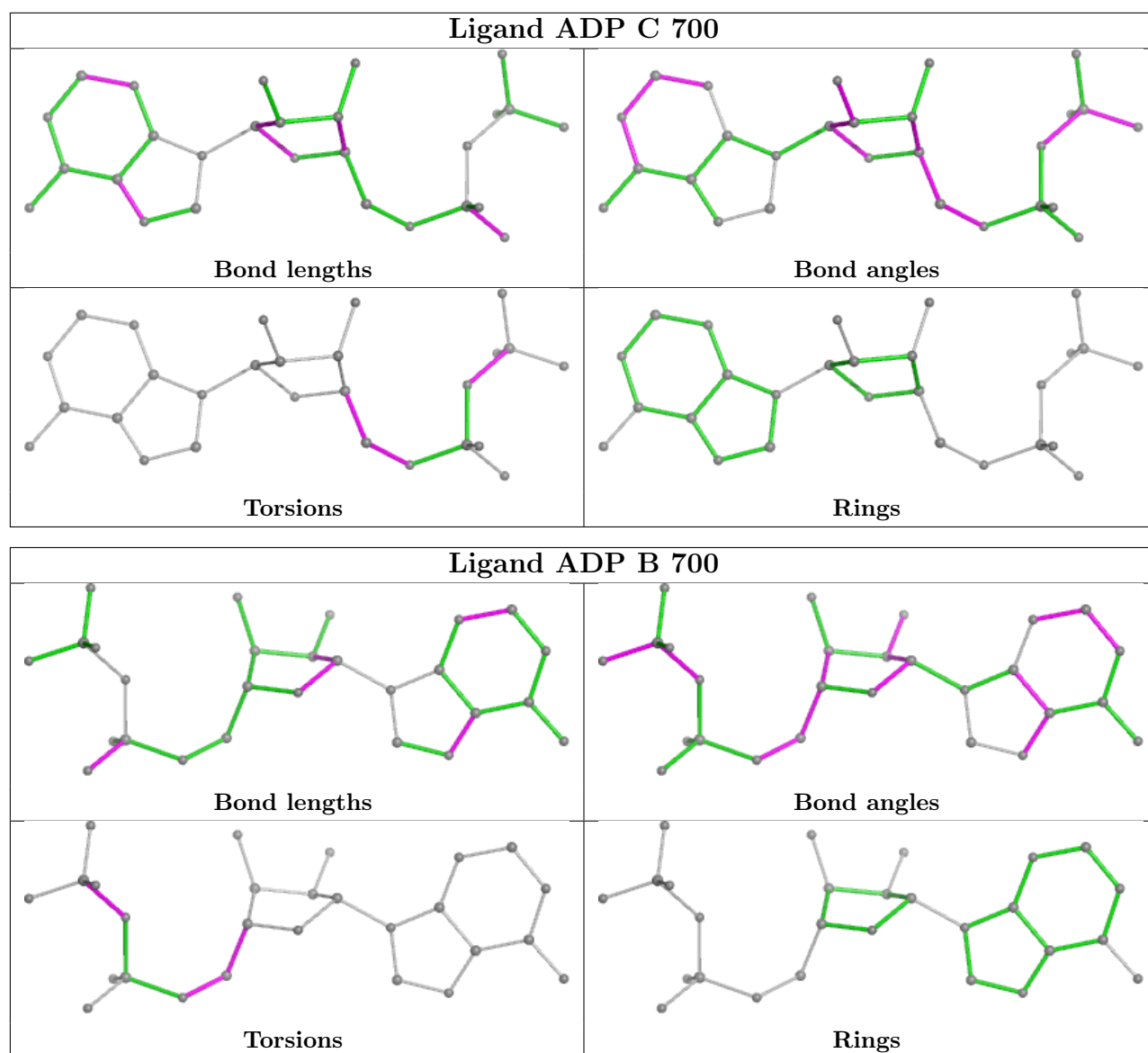
There are no ring outliers.

3 monomers are involved in 3 short contacts:

Mol	Chain	Res	Type	Clashes	Symm-Clashes
2	A	700	ADP	1	0
2	C	700	ADP	1	0
2	B	700	ADP	1	0

The following is a two-dimensional graphical depiction of Mogul quality analysis of bond lengths, bond angles, torsion angles, and ring geometry for all instances of the Ligand of Interest. In addition, ligands with molecular weight > 250 and outliers as shown on the validation Tables will also be included. For torsion angles, if less than 5% of the Mogul distribution of torsion angles is within 10 degrees of the torsion angle in question, then that torsion angle is considered an outlier. Any bond that is central to one or more torsion angles identified as an outlier by Mogul will be highlighted in the graph. For rings, the root-mean-square deviation (RMSD) between the ring in question and similar rings identified by Mogul is calculated over all ring torsion angles. If the average RMSD is greater than 60 degrees and the minimal RMSD between the ring in question and any Mogul-identified rings is also greater than 60 degrees, then that ring is considered an outlier. The outliers are highlighted in purple. The color gray indicates Mogul did not find sufficient equivalents in the CSD to analyse the geometry.





## 5.7 Other polymers [i](#)

There are no such residues in this entry.

## 5.8 Polymer linkage issues [i](#)

There are no chain breaks in this entry.

## 6 Fit of model and data

### 6.1 Protein, DNA and RNA chains

In the following table, the column labelled ‘#RSRZ> 2’ contains the number (and percentage) of RSRZ outliers, followed by percent RSRZ outliers for the chain as percentile scores relative to all X-ray entries and entries of similar resolution. The OWAB column contains the minimum, median, 95<sup>th</sup> percentile and maximum values of the occupancy-weighted average B-factor per residue. The column labelled ‘Q< 0.9’ lists the number of (and percentage) of residues with an average occupancy less than 0.9.

Mol	Chain	Analysed	<RSRZ>	#RSRZ>2	OWAB(Å <sup>2</sup> )	Q<0.9
1	A	288/331 (87%)	0.75	26 (9%) <b>9</b> <b>12</b>	14, 27, 76, 125	0
1	B	288/331 (87%)	0.74	27 (9%) <b>8</b> <b>11</b>	14, 27, 76, 125	0
1	C	288/331 (87%)	0.81	24 (8%) <b>11</b> <b>15</b>	16, 28, 76, 125	0
All	All	864/993 (87%)	0.77	77 (8%) <b>9</b> <b>13</b>	14, 27, 76, 125	0

All (77) RSRZ outliers are listed below:

Mol	Chain	Res	Type	RSRZ
1	A	238	ASN	9.0
1	A	236	THR	8.4
1	C	238	ASN	8.1
1	B	236	THR	6.9
1	A	237	SER	6.7
1	A	299	SER	6.5
1	B	237	SER	6.3
1	B	238	ASN	5.9
1	C	236	THR	5.9
1	C	299	SER	5.8
1	C	243	VAL	5.6
1	C	242	ILE	5.1
1	A	242	ILE	4.6
1	A	193	ASN	4.5
1	C	133	ASN	4.3
1	B	299	SER	4.2
1	A	298	THR	4.1
1	B	242	ILE	4.0
1	A	239	ASP	3.9
1	B	245	LEU	3.9
1	B	207	ILE	3.9
1	C	237	SER	3.9
1	A	207	ILE	3.8

*Continued on next page...*

*Continued from previous page...*

<b>Mol</b>	<b>Chain</b>	<b>Res</b>	<b>Type</b>	<b>RSRZ</b>
1	C	132	GLY	3.7
1	A	243	VAL	3.5
1	C	228	VAL	3.5
1	A	228	VAL	3.5
1	B	212	PHE	3.4
1	C	245	LEU	3.4
1	B	228	VAL	3.4
1	A	132	GLY	3.3
1	C	207	ILE	3.3
1	A	134	SER	3.1
1	C	134	SER	3.1
1	B	193	ASN	3.1
1	C	41	GLU	3.0
1	B	243	VAL	3.0
1	A	195	ILE	2.9
1	A	289	GLY	2.9
1	B	298	THR	2.9
1	C	239	ASP	2.9
1	A	41	GLU	2.8
1	A	133	ASN	2.8
1	B	132	GLY	2.7
1	B	134	SER	2.7
1	A	90	PHE	2.7
1	B	239	ASP	2.6
1	C	193	ASN	2.6
1	B	195	ILE	2.5
1	A	78	ASP	2.5
1	C	195	ILE	2.5
1	A	76	ALA	2.5
1	B	211	ALA	2.5
1	A	240	ASP	2.5
1	B	131	LYS	2.5
1	C	212	PHE	2.5
1	C	70	LYS	2.4
1	B	133	ASN	2.4
1	B	76	ALA	2.4
1	B	143	LEU	2.4
1	A	263	VAL	2.3
1	B	230	ILE	2.3
1	A	131	LYS	2.3
1	C	251	ARG	2.3
1	C	75	LYS	2.3

*Continued on next page...*

*Continued from previous page...*

Mol	Chain	Res	Type	RSRZ
1	C	298	THR	2.3
1	B	251	ARG	2.2
1	C	126	VAL	2.2
1	B	289	GLY	2.2
1	C	209	ARG	2.2
1	A	241	LYS	2.2
1	C	241	LYS	2.1
1	B	126	VAL	2.1
1	A	212	PHE	2.1
1	A	235	PRO	2.1
1	B	191	LEU	2.1
1	B	265	GLY	2.0

## 6.2 Non-standard residues in protein, DNA, RNA chains [i](#)

There are no non-standard protein/DNA/RNA residues in this entry.

## 6.3 Carbohydrates [i](#)

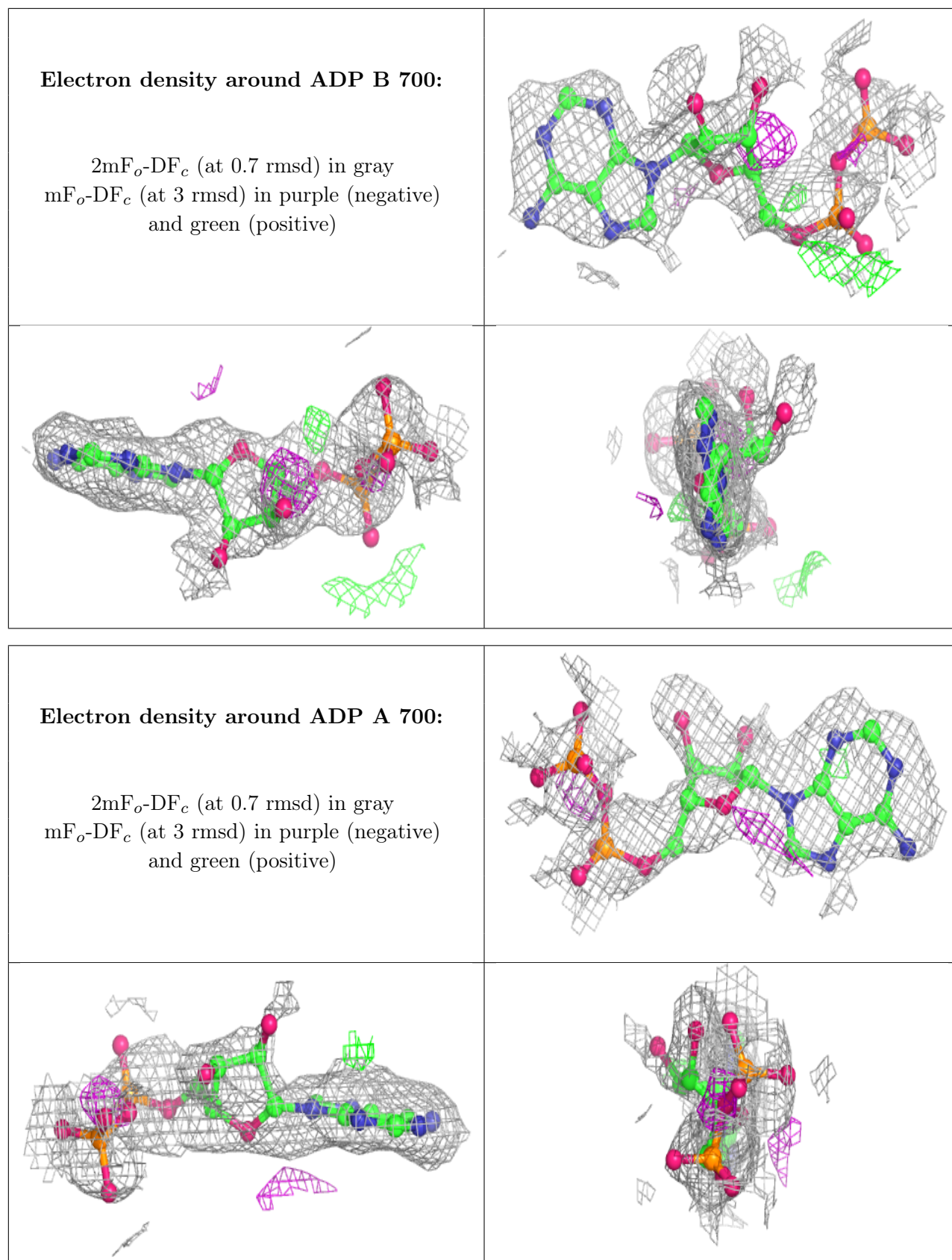
There are no monosaccharides in this entry.

## 6.4 Ligands [i](#)

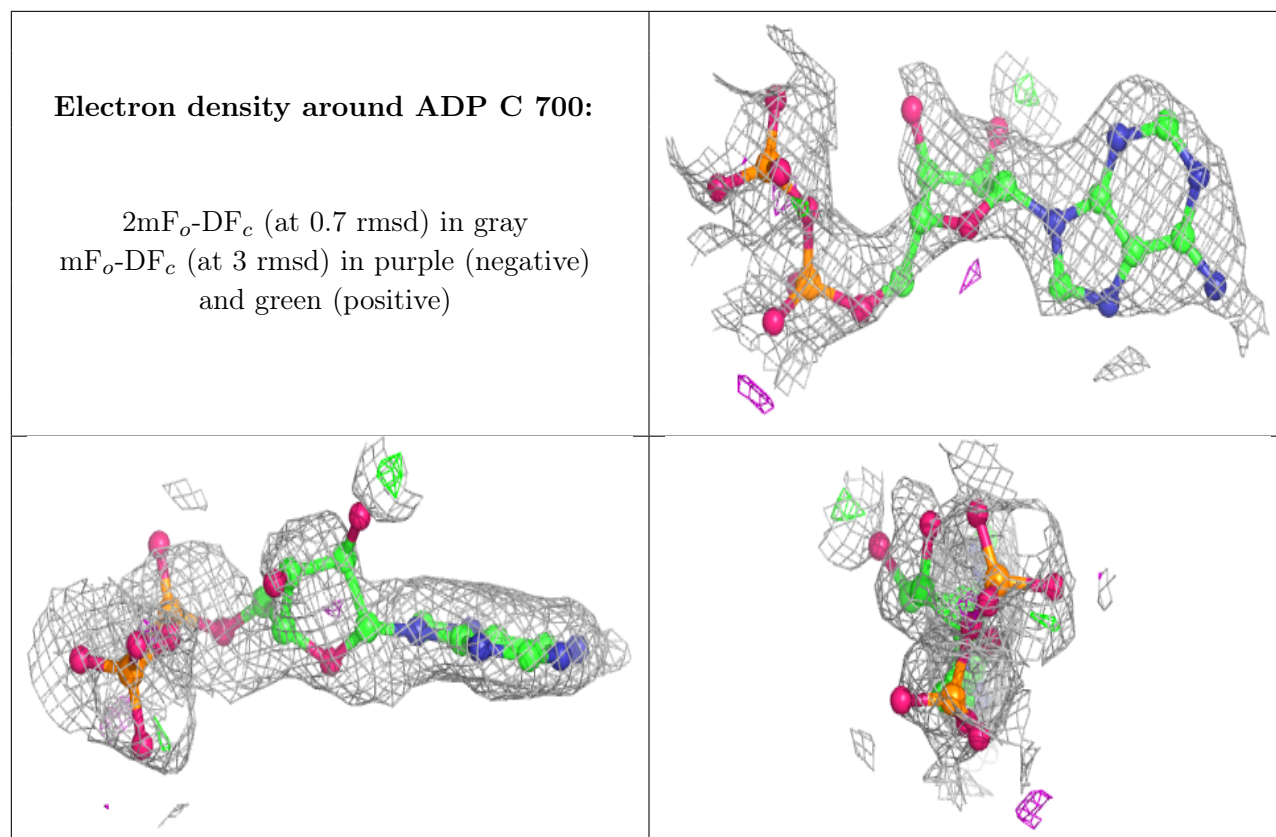
In the following table, the Atoms column lists the number of modelled atoms in the group and the number defined in the chemical component dictionary. The B-factors column lists the minimum, median, 95<sup>th</sup> percentile and maximum values of B factors of atoms in the group. The column labelled 'Q< 0.9' lists the number of atoms with occupancy less than 0.9.

Mol	Type	Chain	Res	Atoms	RSCC	RSR	B-factors(Å <sup>2</sup> )	Q<0.9
2	ADP	B	700	27/27	0.69	0.34	56,80,121,126	0
2	ADP	A	700	27/27	0.73	0.27	56,81,121,127	0
2	ADP	C	700	27/27	0.74	0.26	57,80,120,125	0
3	MG	C	701	1/1	0.86	0.29	57,57,57,57	0
3	MG	B	701	1/1	0.88	0.25	56,56,56,56	0
3	MG	A	701	1/1	0.90	0.41	56,56,56,56	0

The following is a graphical depiction of the model fit to experimental electron density of all instances of the Ligand of Interest. In addition, ligands with molecular weight > 250 and outliers as shown on the geometry validation Tables will also be included. Each fit is shown from different orientation to approximate a three-dimensional view.







## 6.5 Other polymers [i](#)

There are no such residues in this entry.