



# wwPDB X-ray Structure Validation Summary Report ⓘ

Dec 10, 2023 – 06:50 pm GMT

PDB ID : 1W0K  
Title : ADP inhibited bovine F1-ATPase  
Authors : Kagawa, R.; Montgomery, M.G.; Braig, K.; Walker, J.E.; Leslie, A.G.W.  
Deposited on : 2004-06-08  
Resolution : 2.85 Å(reported)

This is a wwPDB X-ray Structure Validation Summary Report for a publicly released PDB entry.

We welcome your comments at [validation@mail.wwpdb.org](mailto:validation@mail.wwpdb.org)

A user guide is available at

<https://www.wwpdb.org/validation/2017/XrayValidationReportHelp>

with specific help available everywhere you see the ⓘ symbol.

The types of validation reports are described at

<http://www.wwpdb.org/validation/2017/FAQs#types>.

---

The following versions of software and data (see [references ⓘ](#)) were used in the production of this report:

MolProbity : 4.02b-467  
Mogul : 1.8.4, CSD as541be (2020)  
Xtriage (Phenix) : 1.13  
EDS : 2.36  
buster-report : 1.1.7 (2018)  
Percentile statistics : 20191225.v01 (using entries in the PDB archive December 25th 2019)  
Refmac : 5.8.0158  
CCP4 : 7.0.044 (Gargrove)  
Ideal geometry (proteins) : Engh & Huber (2001)  
Ideal geometry (DNA, RNA) : Parkinson et al. (1996)  
Validation Pipeline (wwPDB-VP) : 2.36

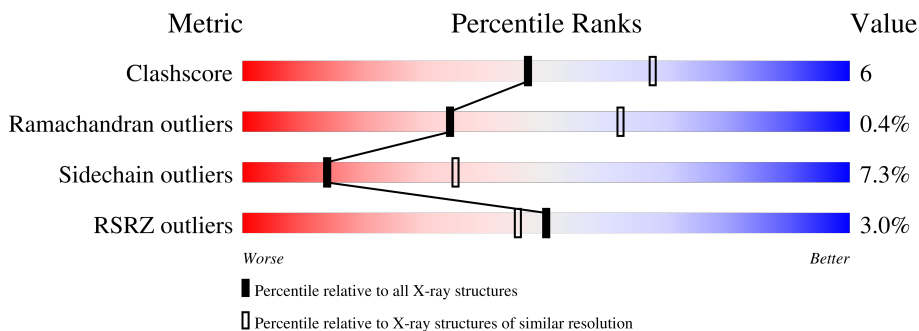
# 1 Overall quality at a glance

The following experimental techniques were used to determine the structure:

*X-RAY DIFFRACTION*

The reported resolution of this entry is 2.85 Å.

Percentile scores (ranging between 0-100) for global validation metrics of the entry are shown in the following graphic. The table shows the number of entries on which the scores are based.




Metric	Whole archive (#Entries)	Similar resolution (#Entries, resolution range(Å))
Clashscore	141614	3438 (2.90-2.82)
Ramachandran outliers	138981	3348 (2.90-2.82)
Sidechain outliers	138945	3351 (2.90-2.82)
RSRZ outliers	127900	3103 (2.90-2.82)

The table below summarises the geometric issues observed across the polymeric chains and their fit to the electron density. The red, orange, yellow and green segments of the lower bar indicate the fraction of residues that contain outliers for  $\geq 3$ , 2, 1 and 0 types of geometric quality criteria respectively. A grey segment represents the fraction of residues that are not modelled. The numeric value for each fraction is indicated below the corresponding segment, with a dot representing fractions  $\leq 5\%$ . The upper red bar (where present) indicates the fraction of residues that have poor fit to the electron density. The numeric value is given above the bar.

Mol	Chain	Length	Quality of chain
1	A	510	 8% 76% 18% • 5%
1	B	510	 8% 75% 17% • 6%
1	C	510	 8% 76% 18% • •
2	D	482	 8% 76% 20% • •
2	E	482	 8% 71% 23% • •
2	F	482	 2% 74% 22% • •

*Continued on next page...*

*Continued from previous page...*

Mol	Chain	Length	Quality of chain
3	G	272	 <p>A horizontal bar chart representing the quality of chain. The bar is divided into four segments: a small red segment at the beginning labeled '7%', followed by a green segment labeled '38%', a small yellow segment labeled '7%', and a large grey segment at the end labeled '55%'.</p>

## 2 Entry composition [i](#)

There are 8 unique types of molecules in this entry. The entry contains 23092 atoms, of which 0 are hydrogens and 0 are deuteriums.

In the tables below, the ZeroOcc column contains the number of atoms modelled with zero occupancy, the AltConf column contains the number of residues with at least one atom in alternate conformation and the Trace column contains the number of residues modelled with at most 2 atoms.

- Molecule 1 is a protein called ATP SYNTHASE ALPHA CHAIN HEART ISOFORM, MITOCHONDRIAL PRECURSOR.

Mol	Chain	Residues	Atoms					ZeroOcc	AltConf	Trace
			Total	C	N	O	S			
1	A	487	3715	2341	656	706	12	0	0	0
1	B	479	3656	2303	647	694	12	0	0	0
1	C	492	3748	2360	661	715	12	0	0	0

There are 3 discrepancies between the modelled and reference sequences:

Chain	Residue	Modelled	Actual	Comment	Reference
A	481	GLY	SER	cloning artifact	UNP P19483
B	481	GLY	SER	cloning artifact	UNP P19483
C	481	GLY	SER	cloning artifact	UNP P19483

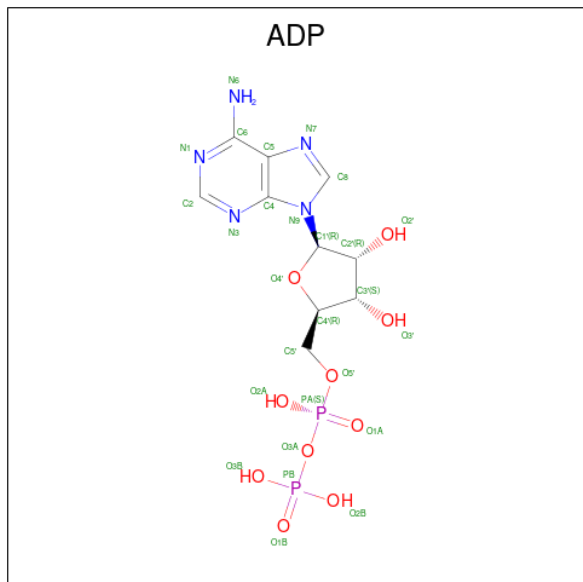
- Molecule 2 is a protein called ATP SYNTHASE BETA CHAIN, MITOCHONDRIAL PRECURSOR.

Mol	Chain	Residues	Atoms					ZeroOcc	AltConf	Trace
			Total	C	N	O	S			
2	D	467	3539	2243	601	684	11	0	0	0
2	E	466	3530	2238	600	681	11	0	0	0
2	F	466	3530	2238	600	681	11	0	0	0

- Molecule 3 is a protein called ATP SYNTHASE GAMMA CHAIN, MITOCHONDRIAL PRECURSOR.

Mol	Chain	Residues	Atoms					ZeroOcc	AltConf	Trace
			Total	C	N	O	S			
3	G	122	945	591	171	176	7	0	0	0

- Molecule 4 is ADENOSINE-5'-DIPHOSPHATE (three-letter code: ADP) (formula:  $C_{10}H_{15}N_5O_{10}P_2$ ).

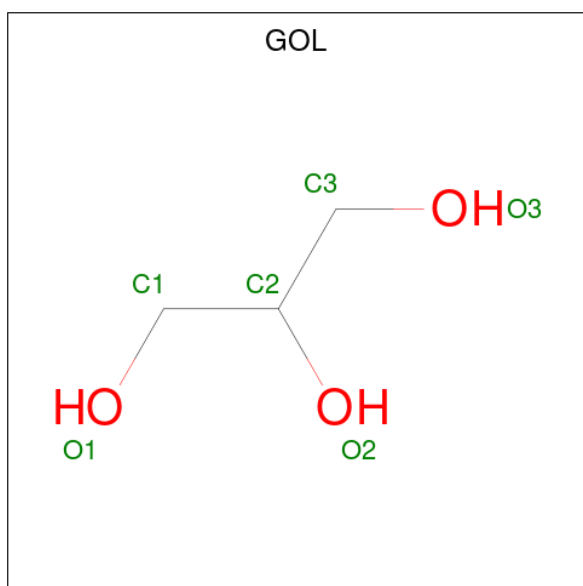


Mol	Chain	Residues	Atoms					ZeroOcc	AltConf
			Total	C	N	O	P		
4	A	1	Total	C	N	O	P	0	0
			27	10	5	10	2		
4	B	1	Total	C	N	O	P	0	0
			27	10	5	10	2		
4	C	1	Total	C	N	O	P	0	0
			27	10	5	10	2		
4	D	1	Total	C	N	O	P	0	0
			27	10	5	10	2		
4	F	1	Total	C	N	O	P	0	0
			27	10	5	10	2		

- Molecule 5 is MAGNESIUM ION (three-letter code: MG) (formula: Mg).

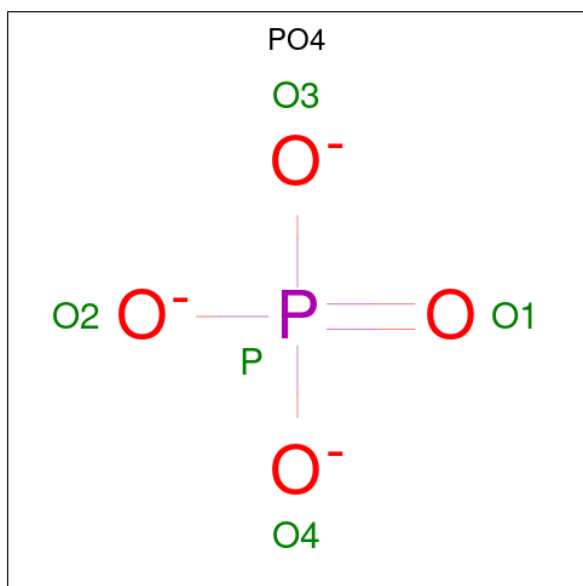
Mol	Chain	Residues	Atoms		ZeroOcc	AltConf
			Total	Mg		
5	A	1	Total	Mg	0	0
			1	1		
5	B	1	Total	Mg	0	0
			1	1		
5	C	1	Total	Mg	0	0
			1	1		
5	D	1	Total	Mg	0	0
			1	1		
5	F	1	Total	Mg	0	0
			1	1		

- Molecule 6 is GLYCEROL (three-letter code: GOL) (formula: C<sub>3</sub>H<sub>8</sub>O<sub>3</sub>).



Mol	Chain	Residues	Atoms		ZeroOcc	AltConf
6	B	1	Total	C O	0	0
			6	3 3		
6	C	1	Total	C O	0	0
			6	3 3		
6	D	1	Total	C O	0	0
			6	3 3		

- Molecule 7 is PHOSPHATE ION (three-letter code: PO4) (formula: O<sub>4</sub>P).



Mol	Chain	Residues	Atoms			ZeroOcc	AltConf
7	E	1	Total	O	P	0	0
			5	4	1		

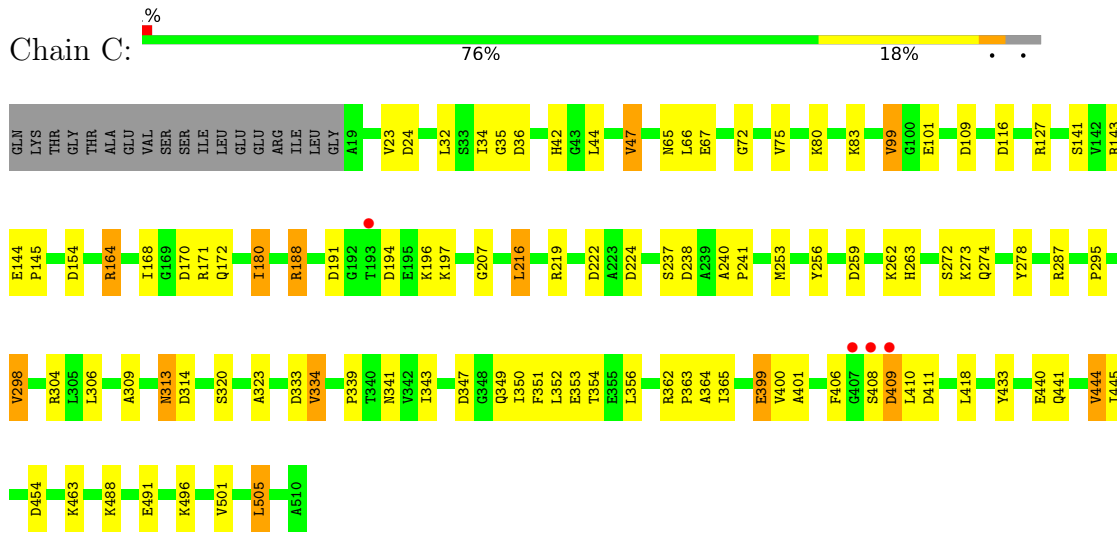
- Molecule 8 is water.

Mol	Chain	Residues	Atoms		ZeroOcc	AltConf
8	A	48	Total	O	0	0
			48	48		
8	B	40	Total	O	0	0
			40	40		
8	C	54	Total	O	0	0
			54	54		
8	D	51	Total	O	0	0
			51	51		
8	E	20	Total	O	0	0
			20	20		
8	F	48	Total	O	0	0
			48	48		
8	G	5	Total	O	0	0
			5	5		

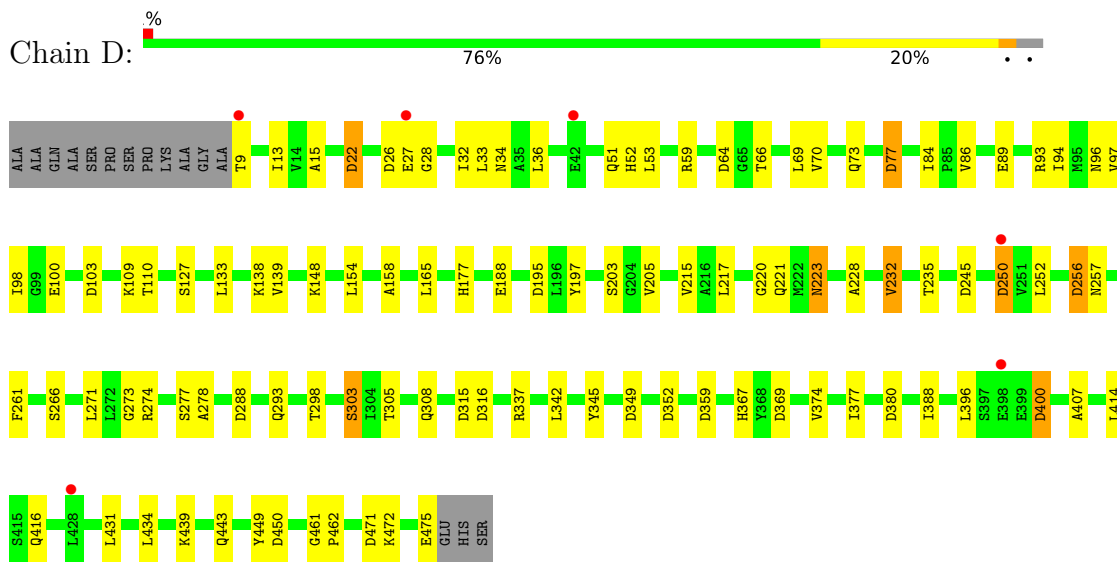




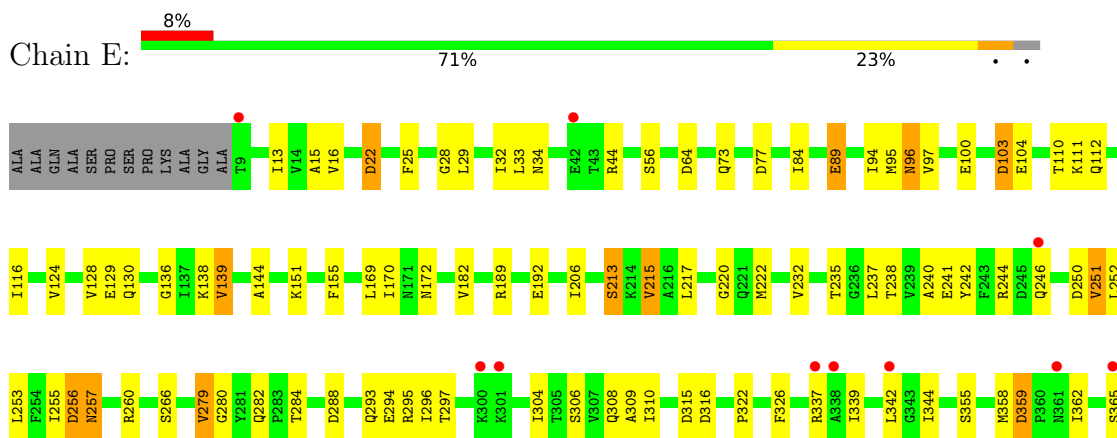
• Molecule 1: ATP SYNTHASE ALPHA CHAIN HEART ISOFORM, MITOCHONDRIAL PRE-CURSOR

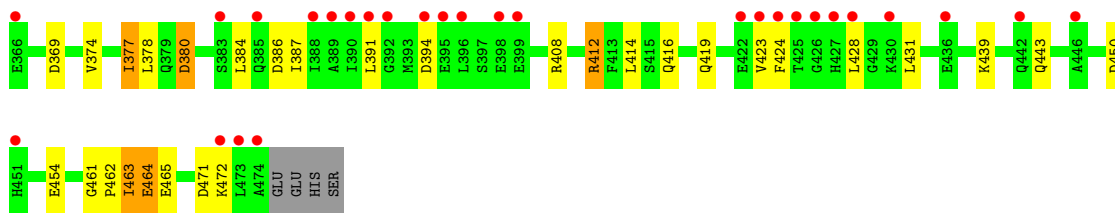


• Molecule 2: ATP SYNTHASE BETA CHAIN, MITOCHONDRIAL PRECURSOR

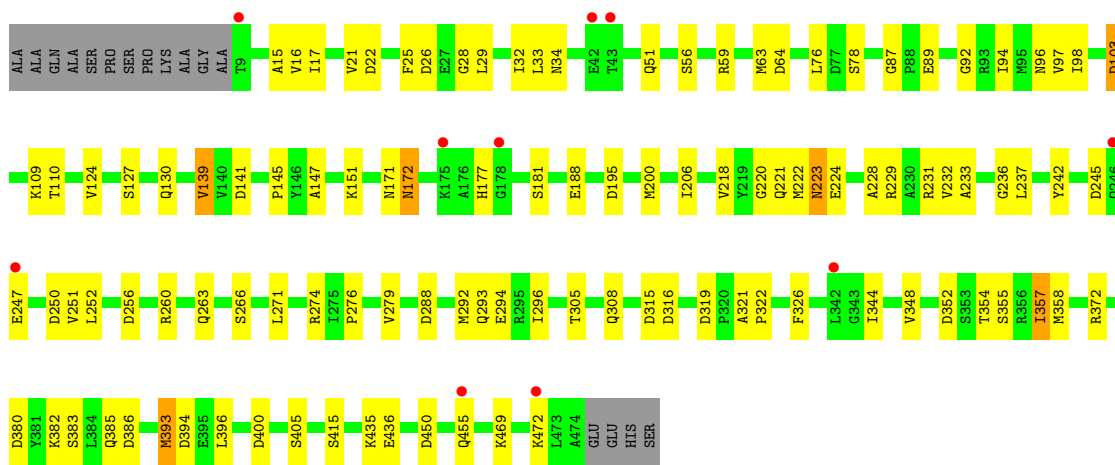


• Molecule 2: ATP SYNTHASE BETA CHAIN, MITOCHONDRIAL PRECURSOR

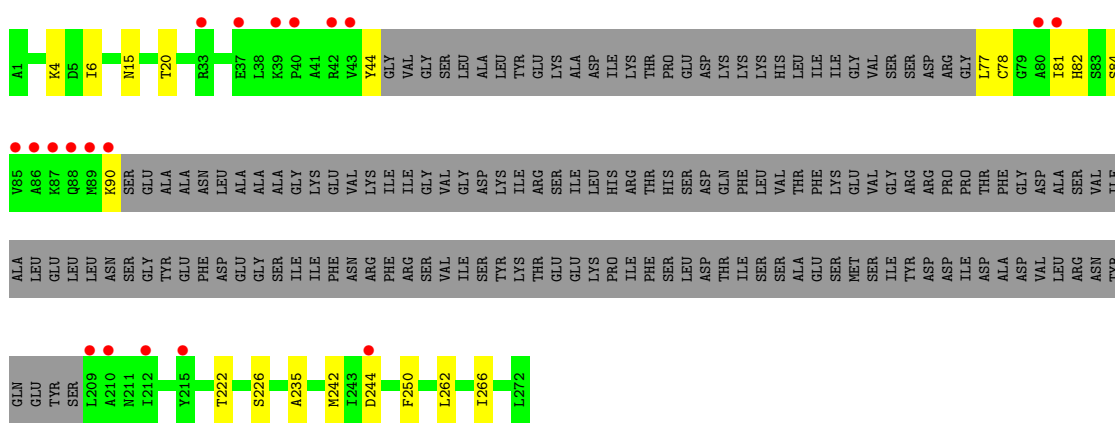




● Molecule 2: ATP SYNTHASE BETA CHAIN, MITOCHONDRIAL PRECURSOR



● Molecule 3: ATP SYNTHASE GAMMA CHAIN, MITOCHONDRIAL PRECURSOR



## 4 Data and refinement statistics

Property	Value	Source
Space group	P 21 21 21	Depositor
Cell constants a, b, c, $\alpha$ , $\beta$ , $\gamma$	283.04Å 107.61Å 139.64Å 90.00° 90.00° 90.00°	Depositor
Resolution (Å)	20.00 – 2.85 19.99 – 2.85	Depositor EDS
% Data completeness (in resolution range)	92.8 (20.00-2.85) 92.8 (19.99-2.85)	Depositor EDS
$R_{merge}$	0.06	Depositor
$R_{sym}$	(Not available)	Depositor
$\langle I/\sigma(I) \rangle$ <sup>1</sup>	5.51 (at 2.83Å)	Xtrriage
Refinement program	REFMAC 5.1.19	Depositor
R, $R_{free}$	0.222 , 0.278 0.219 , (Not available)	Depositor DCC
$R_{free}$ test set	No test flags present.	wwPDB-VP
Wilson B-factor (Å <sup>2</sup> )	60.4	Xtrriage
Anisotropy	0.648	Xtrriage
Bulk solvent $k_{sol}$ (e/Å <sup>3</sup> ), $B_{sol}$ (Å <sup>2</sup> )	0.32 , 34.7	EDS
L-test for twinning <sup>2</sup>	$\langle  L  \rangle = 0.48$ , $\langle L^2 \rangle = 0.31$	Xtrriage
Estimated twinning fraction	No twinning to report.	Xtrriage
$F_o, F_c$ correlation	0.93	EDS
Total number of atoms	23092	wwPDB-VP
Average B, all atoms (Å <sup>2</sup> )	62.0	wwPDB-VP

Xtrriage's analysis on translational NCS is as follows: *The largest off-origin peak in the Patterson function is 2.67% of the height of the origin peak. No significant pseudotranslation is detected.*

<sup>1</sup>Intensities estimated from amplitudes.

<sup>2</sup>Theoretical values of  $\langle |L| \rangle$ ,  $\langle L^2 \rangle$  for acentric reflections are 0.5, 0.333 respectively for untwinned datasets, and 0.375, 0.2 for perfectly twinned datasets.

## 5 Model quality [i](#)

### 5.1 Standard geometry [i](#)

Bond lengths and bond angles in the following residue types are not validated in this section: GOL, ADP, PO4, MG

The Z score for a bond length (or angle) is the number of standard deviations the observed value is removed from the expected value. A bond length (or angle) with  $|Z| > 5$  is considered an outlier worth inspection. RMSZ is the root-mean-square of all Z scores of the bond lengths (or angles).

Mol	Chain	Bond lengths		Bond angles	
		RMSZ	# Z  >5	RMSZ	# Z  >5
1	A	0.35	0/3766	0.71	14/5080 (0.3%)
1	B	0.35	0/3704	0.72	20/4995 (0.4%)
1	C	0.36	0/3799	0.73	18/5126 (0.4%)
2	D	0.34	0/3596	0.74	19/4879 (0.4%)
2	E	0.34	0/3587	0.70	15/4867 (0.3%)
2	F	0.35	0/3587	0.72	17/4867 (0.3%)
3	G	0.34	0/949	0.60	1/1266 (0.1%)
All	All	0.35	0/22988	0.71	104/31080 (0.3%)

There are no bond length outliers.

The worst 5 of 104 bond angle outliers are listed below:

Mol	Chain	Res	Type	Atoms	Z	Observed( $^{\circ}$ )	Ideal( $^{\circ}$ )
2	D	103	ASP	CB-CG-OD2	7.44	125.00	118.30
2	E	316	ASP	CB-CG-OD2	7.17	124.76	118.30
2	D	77	ASP	CB-CG-OD2	7.12	124.71	118.30
1	A	109	ASP	CB-CG-OD2	7.02	124.62	118.30
2	D	256	ASP	CB-CG-OD2	6.86	124.47	118.30

There are no chirality outliers.

There are no planarity outliers.

### 5.2 Too-close contacts [i](#)

In the following table, the Non-H and H(model) columns list the number of non-hydrogen atoms and hydrogen atoms in the chain respectively. The H(added) column lists the number of hydrogen atoms added and optimized by MolProbity. The Clashes column lists the number of clashes within the asymmetric unit, whereas Symm-Clashes lists symmetry-related clashes.

Mol	Chain	Non-H	H(model)	H(added)	Clashes	Symm-Clashes
1	A	3715	0	3814	44	0
1	B	3656	0	3766	45	0
1	C	3748	0	3845	47	0
2	D	3539	0	3592	53	0
2	E	3530	0	3587	61	0
2	F	3530	0	3587	48	0
3	G	945	0	1019	6	0
4	A	27	0	12	0	0
4	B	27	0	12	1	0
4	C	27	0	12	0	0
4	D	27	0	12	1	0
4	F	27	0	12	0	0
5	A	1	0	0	0	0
5	B	1	0	0	0	0
5	C	1	0	0	0	0
5	D	1	0	0	0	0
5	F	1	0	0	0	0
6	B	6	0	8	0	0
6	C	6	0	8	1	0
6	D	6	0	8	1	0
7	E	5	0	0	0	0
8	A	48	0	0	1	0
8	B	40	0	0	2	0
8	C	54	0	0	3	0
8	D	51	0	0	1	0
8	E	20	0	0	0	0
8	F	48	0	0	0	0
8	G	5	0	0	0	0
All	All	23092	0	23294	286	0

The all-atom clashscore is defined as the number of clashes found per 1000 atoms (including hydrogen atoms). The all-atom clashscore for this structure is 6.

The worst 5 of 286 close contacts within the same asymmetric unit are listed below, sorted by their clash magnitude.

Atom-1	Atom-2	Interatomic distance (Å)	Clash overlap (Å)
2:D:138:LYS:H	2:D:416:GLN:HE22	1.22	0.86
2:F:293:GLN:HE22	2:F:308:GLN:HE22	1.24	0.82
1:B:190:ASN:HD21	1:B:199:LEU:H	1.30	0.79
2:D:96:ASN:HD22	2:D:98:ILE:HG13	1.48	0.79
1:C:313:ASN:C	1:C:313:ASN:HD22	1.84	0.78

There are no symmetry-related clashes.

## 5.3 Torsion angles [i](#)

### 5.3.1 Protein backbone [i](#)

In the following table, the Percentiles column shows the percent Ramachandran outliers of the chain as a percentile score with respect to all X-ray entries followed by that with respect to entries of similar resolution.

The Analysed column shows the number of residues for which the backbone conformation was analysed, and the total number of residues.

Mol	Chain	Analysed	Favoured	Allowed	Outliers	Percentiles	
1	A	485/510 (95%)	459 (95%)	22 (4%)	4 (1%)	19	46
1	B	475/510 (93%)	451 (95%)	22 (5%)	2 (0%)	34	62
1	C	490/510 (96%)	469 (96%)	20 (4%)	1 (0%)	47	75
2	D	465/482 (96%)	437 (94%)	27 (6%)	1 (0%)	47	75
2	E	464/482 (96%)	433 (93%)	28 (6%)	3 (1%)	25	53
2	F	464/482 (96%)	436 (94%)	26 (6%)	2 (0%)	34	62
3	G	116/272 (43%)	116 (100%)	0	0	100	100
All	All	2959/3248 (91%)	2801 (95%)	145 (5%)	13 (0%)	34	62

5 of 13 Ramachandran outliers are listed below:

Mol	Chain	Res	Type
1	A	488	LYS
1	A	141	SER
1	A	361	ILE
2	D	28	GLY
2	E	28	GLY

### 5.3.2 Protein sidechains [i](#)

In the following table, the Percentiles column shows the percent sidechain outliers of the chain as a percentile score with respect to all X-ray entries followed by that with respect to entries of similar resolution.

The Analysed column shows the number of residues for which the sidechain conformation was analysed, and the total number of residues.

Mol	Chain	Analysed	Rotameric	Outliers	Percentiles	
1	A	393/412 (95%)	358 (91%)	35 (9%)	9	26
1	B	388/412 (94%)	370 (95%)	18 (5%)	27	56
1	C	397/412 (96%)	367 (92%)	30 (8%)	13	33
2	D	377/386 (98%)	358 (95%)	19 (5%)	24	53
2	E	376/386 (97%)	338 (90%)	38 (10%)	7	20
2	F	376/386 (97%)	348 (93%)	28 (7%)	13	35
3	G	102/230 (44%)	93 (91%)	9 (9%)	10	26
All	All	2409/2624 (92%)	2232 (93%)	177 (7%)	14	35

5 of 177 residues with a non-rotameric sidechain are listed below:

Mol	Chain	Res	Type
2	E	215	VAL
2	F	110	THR
2	E	284	THR
2	E	419	GLN
2	F	223	ASN

Sometimes sidechains can be flipped to improve hydrogen bonding and reduce clashes. 5 of 61 such sidechains are listed below:

Mol	Chain	Res	Type
1	C	349	GLN
2	F	223	ASN
2	D	130	GLN
2	F	194	ASN
2	F	385	GLN

### 5.3.3 RNA [i](#)

There are no RNA molecules in this entry.

## 5.4 Non-standard residues in protein, DNA, RNA chains [i](#)

There are no non-standard protein/DNA/RNA residues in this entry.

## 5.5 Carbohydrates [i](#)

There are no monosaccharides in this entry.

## 5.6 Ligand geometry [i](#)

Of 14 ligands modelled in this entry, 5 are monoatomic - leaving 9 for Mogul analysis.

In the following table, the Counts columns list the number of bonds (or angles) for which Mogul statistics could be retrieved, the number of bonds (or angles) that are observed in the model and the number of bonds (or angles) that are defined in the Chemical Component Dictionary. The Link column lists molecule types, if any, to which the group is linked. The Z score for a bond length (or angle) is the number of standard deviations the observed value is removed from the expected value. A bond length (or angle) with  $|Z| > 2$  is considered an outlier worth inspection. RMSZ is the root-mean-square of all Z scores of the bond lengths (or angles).

Mol	Type	Chain	Res	Link	Bond lengths			Bond angles		
					Counts	RMSZ	# Z  > 2	Counts	RMSZ	# Z  > 2
4	ADP	B	1511	5	24,29,29	1.24	2 (8%)	29,45,45	1.45	3 (10%)
7	PO4	E	1475	-	4,4,4	0.87	0	6,6,6	0.59	0
6	GOL	B	1513	-	5,5,5	0.38	0	5,5,5	0.28	0
4	ADP	D	1476	5	24,29,29	1.23	2 (8%)	29,45,45	1.36	4 (13%)
4	ADP	C	1511	5	24,29,29	1.21	2 (8%)	29,45,45	1.42	2 (6%)
4	ADP	F	1475	5	24,29,29	1.34	2 (8%)	29,45,45	1.37	3 (10%)
6	GOL	C	1513	-	5,5,5	0.33	0	5,5,5	0.36	0
6	GOL	D	1478	-	5,5,5	0.40	0	5,5,5	0.34	0
4	ADP	A	1511	5	24,29,29	1.27	2 (8%)	29,45,45	1.41	2 (6%)

In the following table, the Chirals column lists the number of chiral outliers, the number of chiral centers analysed, the number of these observed in the model and the number defined in the Chemical Component Dictionary. Similar counts are reported in the Torsion and Rings columns. '-' means no outliers of that kind were identified.

Mol	Type	Chain	Res	Link	Chirals	Torsions	Rings
4	ADP	B	1511	5	-	1/12/32/32	0/3/3/3
6	GOL	B	1513	-	-	2/4/4/4	-
4	ADP	D	1476	5	-	2/12/32/32	0/3/3/3
4	ADP	C	1511	5	-	2/12/32/32	0/3/3/3
4	ADP	F	1475	5	-	4/12/32/32	0/3/3/3
6	GOL	C	1513	-	-	0/4/4/4	-
6	GOL	D	1478	-	-	2/4/4/4	-
4	ADP	A	1511	5	-	1/12/32/32	0/3/3/3

The worst 5 of 10 bond length outliers are listed below:

Mol	Chain	Res	Type	Atoms	Z	Observed(Å)	Ideal(Å)
4	F	1475	ADP	C2-N3	4.62	1.39	1.32

*Continued on next page...*



*Continued from previous page...*

Mol	Chain	Res	Type	Atoms	Z	Observed(Å)	Ideal(Å)
4	B	1511	ADP	C2-N3	4.23	1.38	1.32
4	A	1511	ADP	C2-N3	4.22	1.38	1.32
4	D	1476	ADP	C2-N3	4.04	1.38	1.32
4	C	1511	ADP	C2-N3	3.96	1.38	1.32

The worst 5 of 14 bond angle outliers are listed below:

Mol	Chain	Res	Type	Atoms	Z	Observed(°)	Ideal(°)
4	B	1511	ADP	N3-C2-N1	-5.69	119.78	128.68
4	C	1511	ADP	N3-C2-N1	-5.66	119.83	128.68
4	A	1511	ADP	N3-C2-N1	-5.60	119.93	128.68
4	D	1476	ADP	N3-C2-N1	-5.38	120.27	128.68
4	F	1475	ADP	N3-C2-N1	-5.11	120.70	128.68

There are no chirality outliers.

5 of 14 torsion outliers are listed below:

Mol	Chain	Res	Type	Atoms
4	C	1511	ADP	PA-O3A-PB-O2B
4	D	1476	ADP	PA-O3A-PB-O2B
4	F	1475	ADP	PA-O3A-PB-O2B
6	D	1478	GOL	C1-C2-C3-O3
6	D	1478	GOL	O2-C2-C3-O3

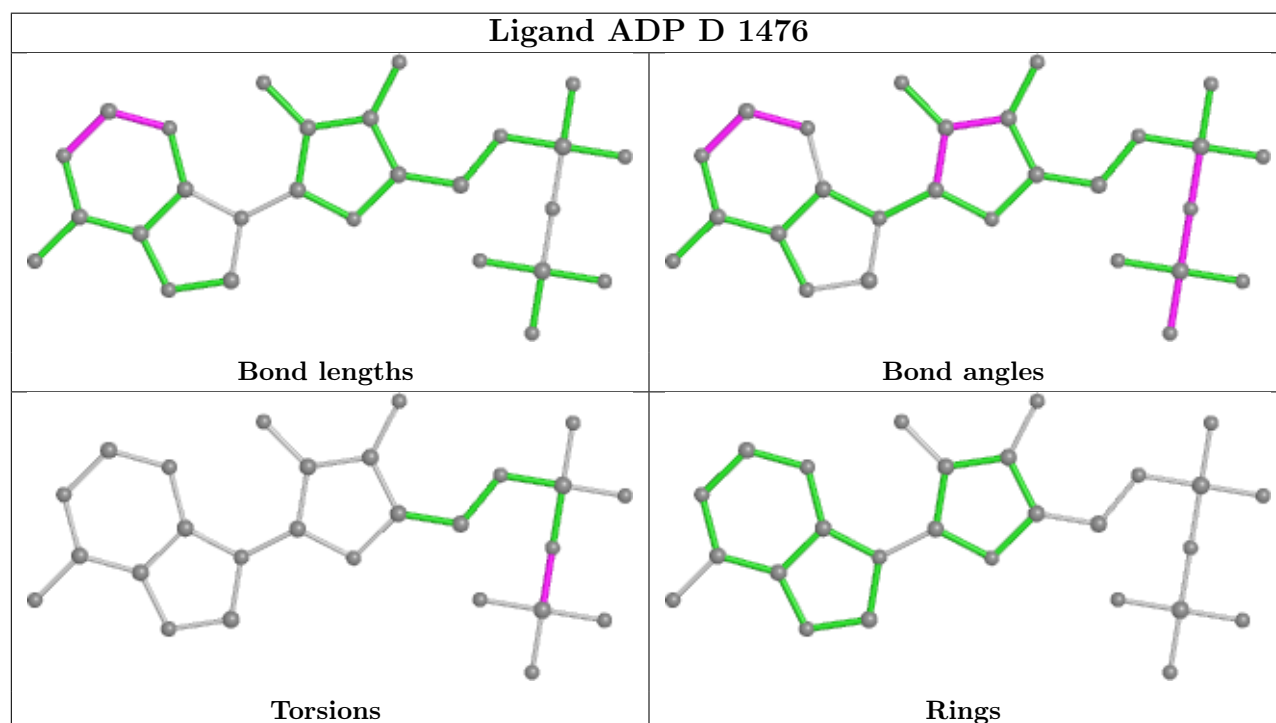
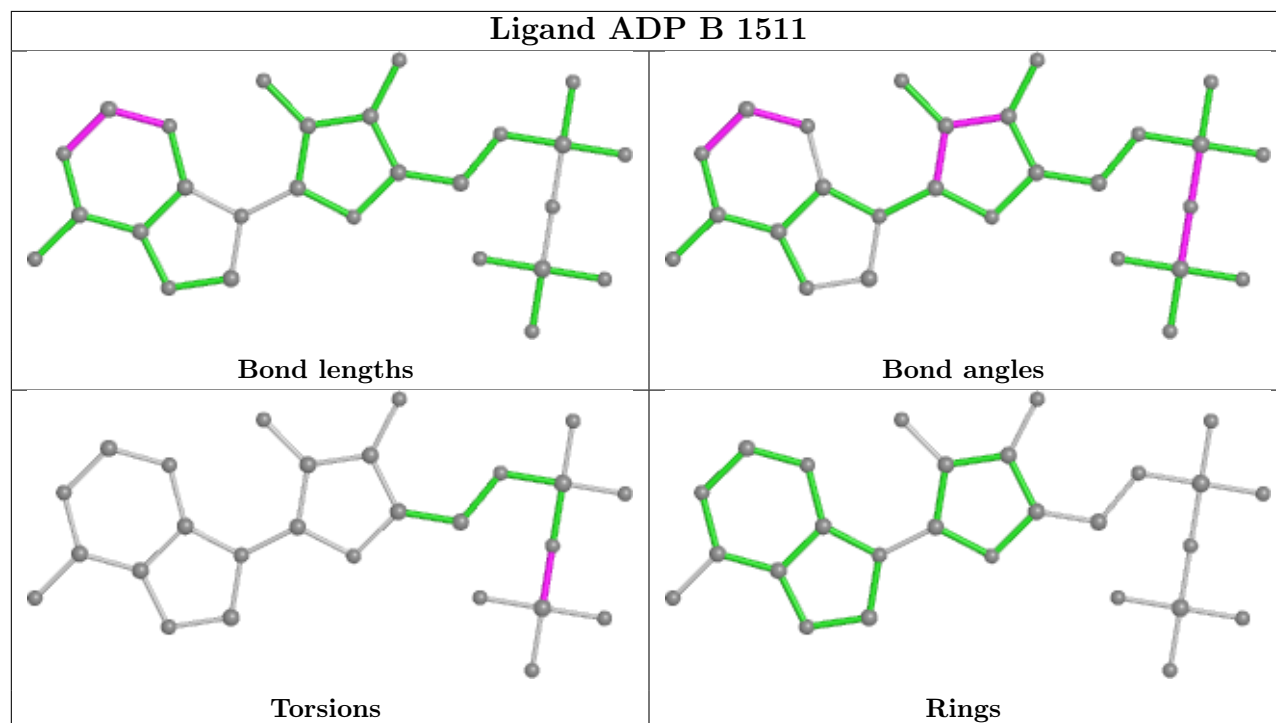
There are no ring outliers.

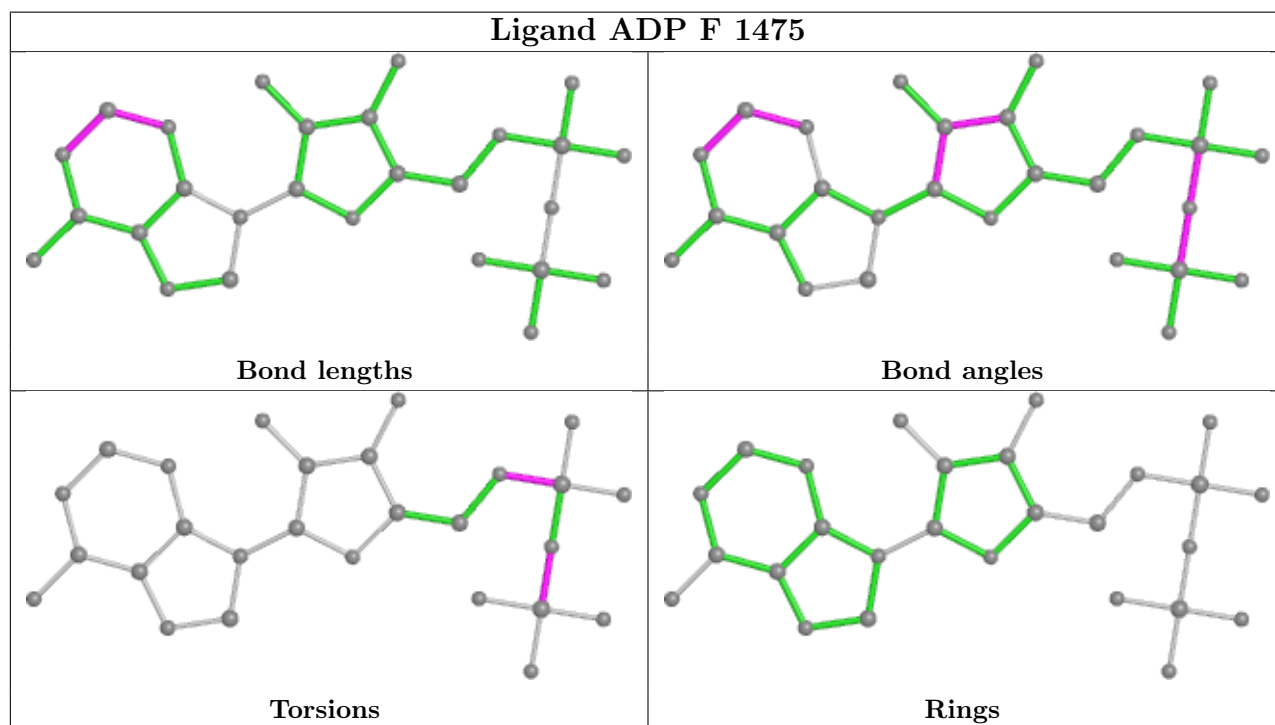
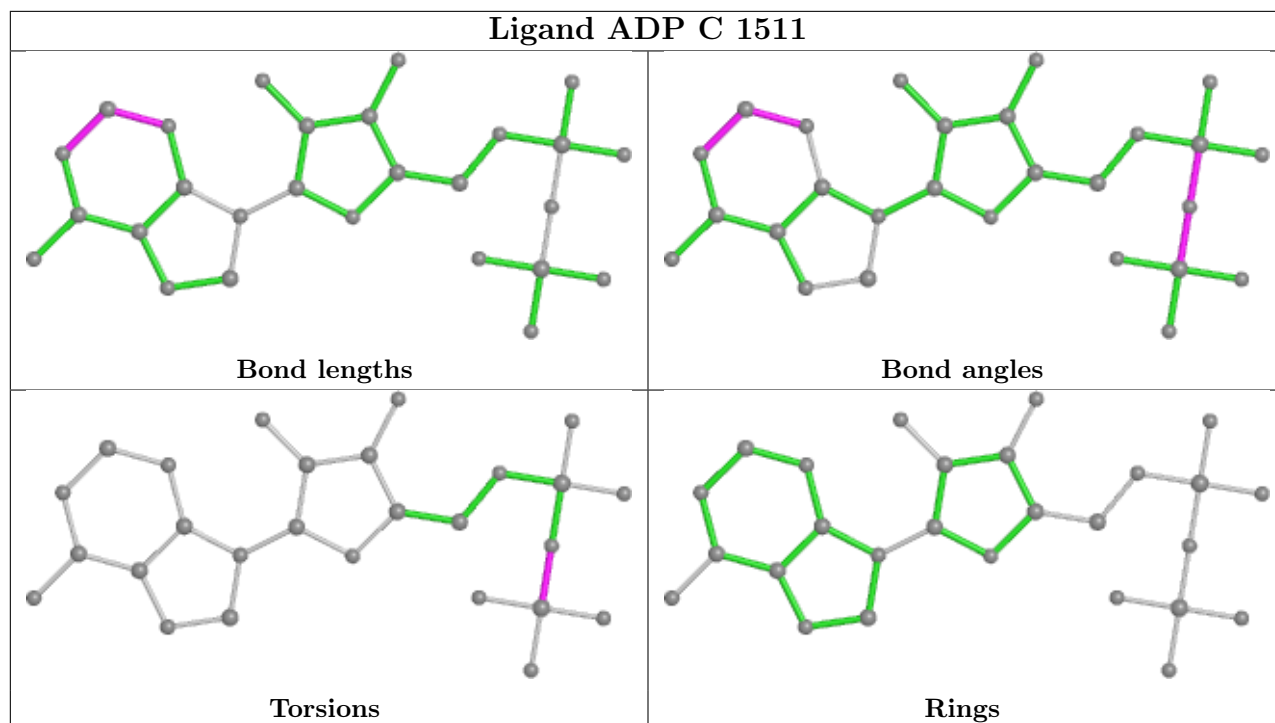
4 monomers are involved in 4 short contacts:

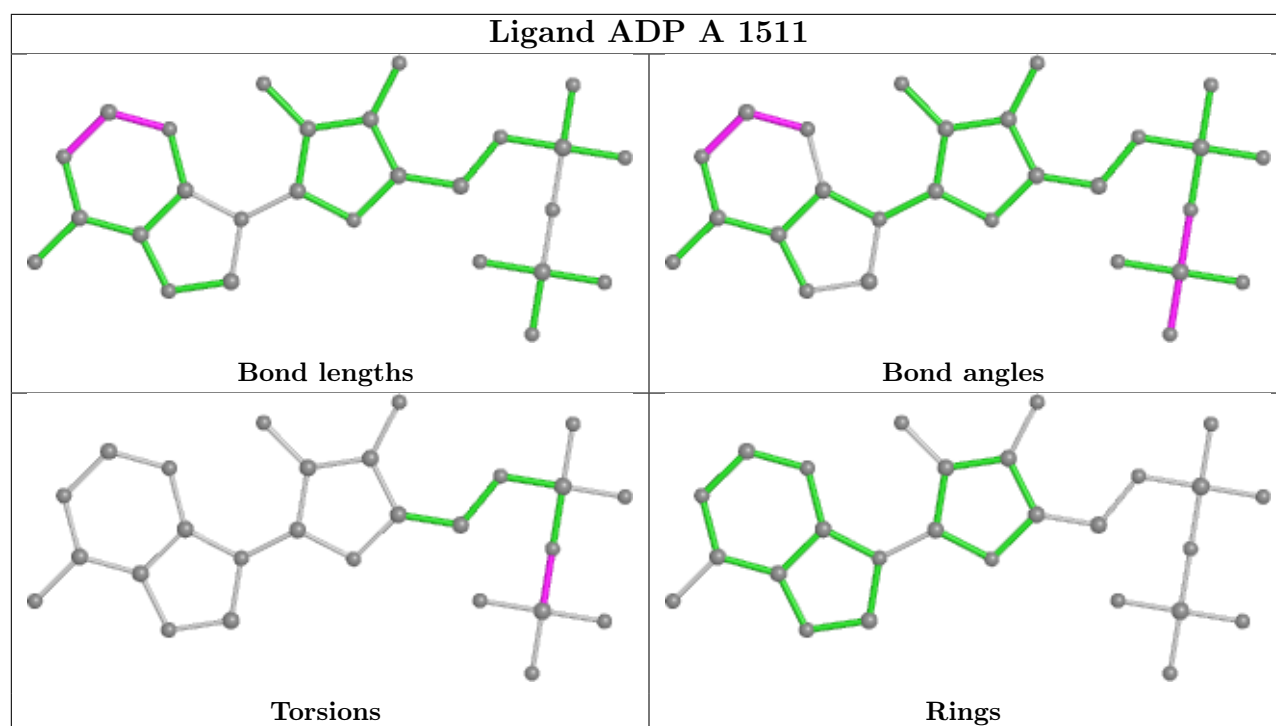
Mol	Chain	Res	Type	Clashes	Symm-Clashes
4	B	1511	ADP	1	0
4	D	1476	ADP	1	0
6	C	1513	GOL	1	0
6	D	1478	GOL	1	0

The following is a two-dimensional graphical depiction of Mogul quality analysis of bond lengths, bond angles, torsion angles, and ring geometry for all instances of the Ligand of Interest. In addition, ligands with molecular weight > 250 and outliers as shown on the validation Tables will also be included. For torsion angles, if less than 5% of the Mogul distribution of torsion angles is within 10 degrees of the torsion angle in question, then that torsion angle is considered an outlier. Any bond that is central to one or more torsion angles identified as an outlier by Mogul will be highlighted in the graph. For rings, the root-mean-square deviation (RMSD) between the ring in question and similar rings identified by Mogul is calculated over all ring torsion angles. If the average RMSD is greater than 60 degrees and the minimal RMSD between the ring in question and

any Mogul-identified rings is also greater than 60 degrees, then that ring is considered an outlier. The outliers are highlighted in purple. The color gray indicates Mogul did not find sufficient equivalents in the CSD to analyse the geometry.







## 5.7 Other polymers [i](#)

There are no such residues in this entry.

## 5.8 Polymer linkage issues [i](#)

There are no chain breaks in this entry.

## 6 Fit of model and data [i](#)

### 6.1 Protein, DNA and RNA chains [i](#)

In the following table, the column labelled ‘#RSRZ > 2’ contains the number (and percentage) of RSRZ outliers, followed by percent RSRZ outliers for the chain as percentile scores relative to all X-ray entries and entries of similar resolution. The OWAB column contains the minimum, median, 95<sup>th</sup> percentile and maximum values of the occupancy-weighted average B-factor per residue. The column labelled ‘Q < 0.9’ lists the number of (and percentage) of residues with an average occupancy less than 0.9.

Mol	Chain	Analysed	<RSRZ>	#RSRZ>2	OWAB(Å <sup>2</sup> )	Q<0.9
1	A	487/510 (95%)	-0.19	7 (1%) 75 74	41, 62, 80, 109	0
1	B	479/510 (93%)	-0.23	4 (0%) 86 85	39, 58, 95, 110	0
1	C	492/510 (96%)	-0.34	4 (0%) 86 85	38, 50, 70, 101	0
2	D	467/482 (96%)	-0.33	6 (1%) 77 76	38, 56, 79, 94	0
2	E	466/482 (96%)	0.14	38 (8%) 11 8	43, 72, 118, 136	0
2	F	466/482 (96%)	-0.22	10 (2%) 63 60	39, 55, 78, 97	0
3	G	122/272 (44%)	0.60	19 (15%) 2 1	44, 85, 122, 127	0
All	All	2979/3248 (91%)	-0.16	88 (2%) 50 45	38, 59, 99, 136	0

The worst 5 of 88 RSRZ outliers are listed below:

Mol	Chain	Res	Type	RSRZ
2	E	474	ALA	6.8
3	G	39	LYS	5.9
1	C	407	GLY	5.6
2	E	398	GLU	5.5
2	E	390	ILE	5.2

### 6.2 Non-standard residues in protein, DNA, RNA chains [i](#)

There are no non-standard protein/DNA/RNA residues in this entry.

### 6.3 Carbohydrates [i](#)

There are no monosaccharides in this entry.

## 6.4 Ligands

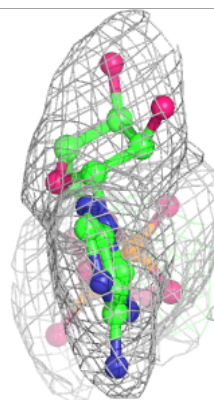
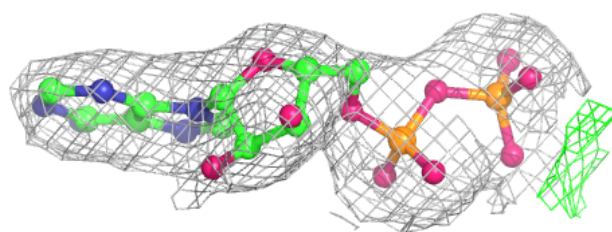
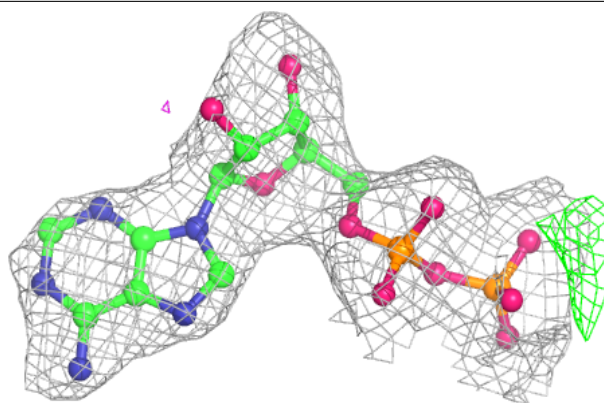
In the following table, the Atoms column lists the number of modelled atoms in the group and the number defined in the chemical component dictionary. The B-factors column lists the minimum, median, 95<sup>th</sup> percentile and maximum values of B factors of atoms in the group. The column labelled 'Q< 0.9' lists the number of atoms with occupancy less than 0.9.

Mol	Type	Chain	Res	Atoms	RSCC	RSR	B-factors( $\text{\AA}^2$ )	Q<0.9
5	MG	F	1476	1/1	0.82	0.39	47,47,47,47	0
7	PO4	E	1475	5/5	0.85	0.15	101,101,101,101	0
6	GOL	C	1513	6/6	0.92	0.15	49,52,53,53	0
6	GOL	D	1478	6/6	0.92	0.23	67,67,68,68	0
5	MG	B	1512	1/1	0.92	0.26	43,43,43,43	0
5	MG	D	1477	1/1	0.93	0.56	50,50,50,50	0
5	MG	A	1512	1/1	0.94	0.30	48,48,48,48	0
5	MG	C	1512	1/1	0.95	0.24	29,29,29,29	0
6	GOL	B	1513	6/6	0.96	0.12	46,46,47,47	0
4	ADP	B	1511	27/27	0.96	0.13	51,56,59,59	0
4	ADP	F	1475	27/27	0.97	0.12	35,46,47,48	0
4	ADP	A	1511	27/27	0.97	0.10	47,48,52,52	0
4	ADP	C	1511	27/27	0.98	0.11	37,42,43,45	0
4	ADP	D	1476	27/27	0.98	0.11	41,48,54,55	0

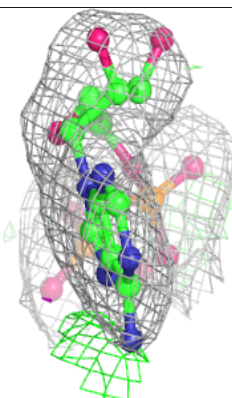
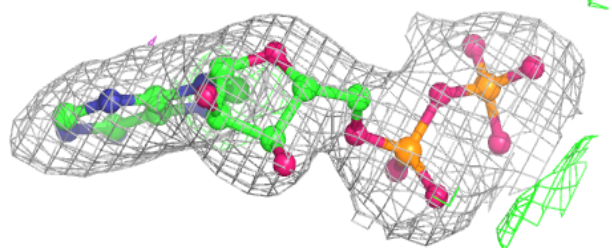
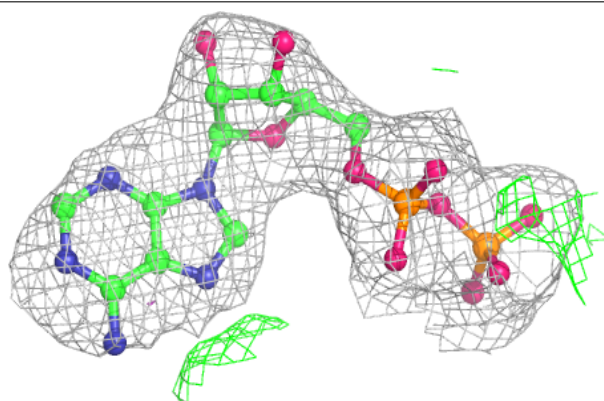
The following is a graphical depiction of the model fit to experimental electron density of all instances of the Ligand of Interest. In addition, ligands with molecular weight > 250 and outliers as shown on the geometry validation Tables will also be included. Each fit is shown from different orientation to approximate a three-dimensional view.

**Electron density around ADP B 1511:**

$2mF_o-DF_c$  (at 0.7 rmsd) in gray  
 $mF_o-DF_c$  (at 3 rmsd) in purple (negative)  
and green (positive)

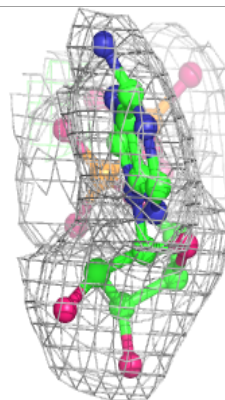
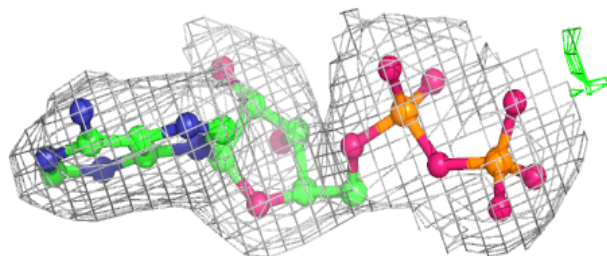
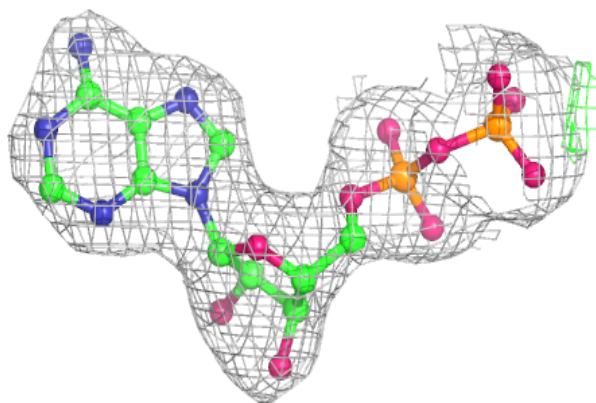
**Electron density around ADP F 1475:**

$2mF_o-DF_c$  (at 0.7 rmsd) in gray  
 $mF_o-DF_c$  (at 3 rmsd) in purple (negative)  
and green (positive)

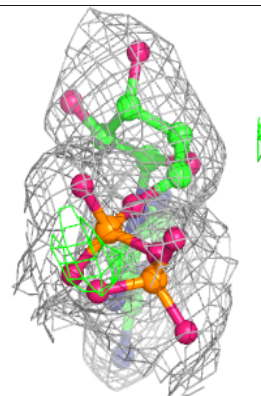
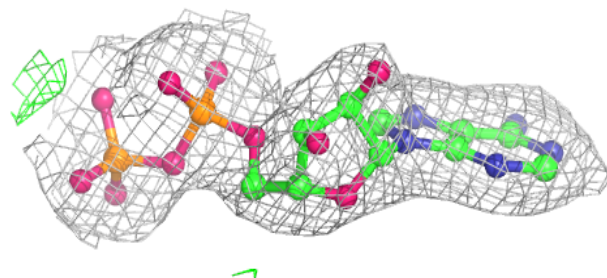
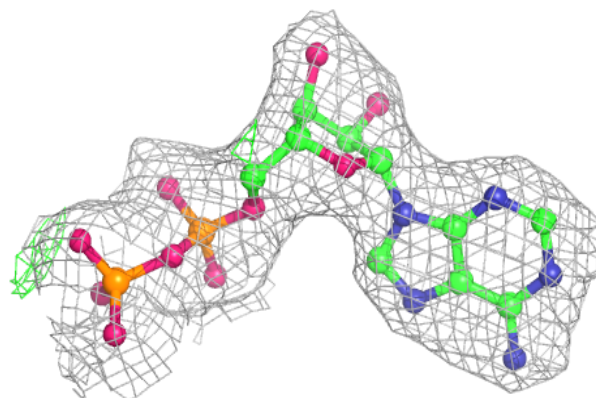


**Electron density around ADP A 1511:**

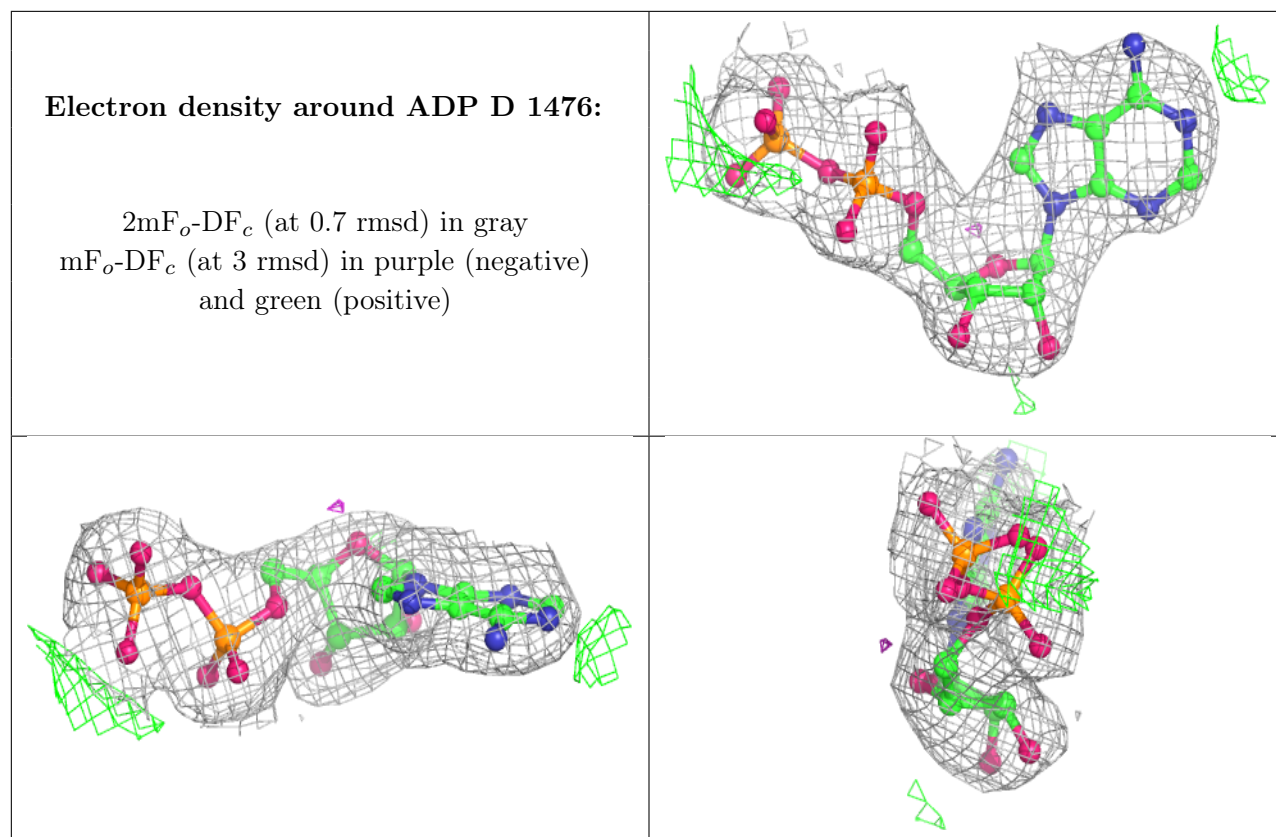
$2mF_o-DF_c$  (at 0.7 rmsd) in gray  
 $mF_o-DF_c$  (at 3 rmsd) in purple (negative)  
and green (positive)

**Electron density around ADP C 1511:**

$2mF_o-DF_c$  (at 0.7 rmsd) in gray  
 $mF_o-DF_c$  (at 3 rmsd) in purple (negative)  
and green (positive)







## 6.5 Other polymers [i](#)

There are no such residues in this entry.