



# Full wwPDB X-ray Structure Validation Report ⓘ

Sep 13, 2020 – 09:59 AM BST

PDB ID : 1VCO  
Title : Crystal Structure of T.th. HB8 CTP synthetase complex with Glutamine  
Authors : Goto, M.; RIKEN Structural Genomics/Proteomics Initiative (RSGI)  
Deposited on : 2004-03-10  
Resolution : 2.15 Å(reported)

This is a Full wwPDB X-ray Structure Validation Report for a publicly released PDB entry.

We welcome your comments at [validation@mail.wwpdb.org](mailto:validation@mail.wwpdb.org)

A user guide is available at

<https://www.wwpdb.org/validation/2017/XrayValidationReportHelp>

with specific help available everywhere you see the ⓘ symbol.

---

The following versions of software and data (see [references ⓘ](#)) were used in the production of this report:

MolProbity : 4.02b-467  
Mogul : 1.8.5 (274361), CSD as541be (2020)  
Xtriage (Phenix) : 1.13  
EDS : 2.14.4.dev1  
Percentile statistics : 20191225.v01 (using entries in the PDB archive December 25th 2019)  
Refmac : 5.8.0158  
CCP4 : 7.0.044 (Gargrove)  
Ideal geometry (proteins) : Engh & Huber (2001)  
Ideal geometry (DNA, RNA) : Parkinson et al. (1996)  
Validation Pipeline (wwPDB-VP) : 2.14.4.dev1

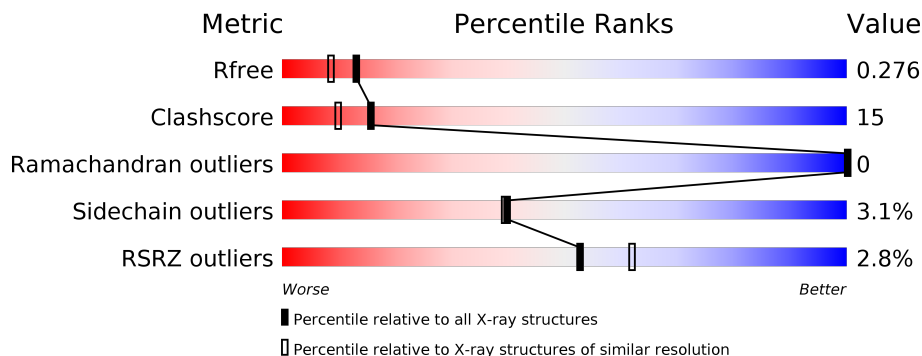
# 1 Overall quality at a glance

The following experimental techniques were used to determine the structure:

*X-RAY DIFFRACTION*

The reported resolution of this entry is 2.15 Å.

Percentile scores (ranging between 0-100) for global validation metrics of the entry are shown in the following graphic. The table shows the number of entries on which the scores are based.



Metric	Whole archive (#Entries)	Similar resolution (#Entries, resolution range(Å))
$R_{free}$	130704	1479 (2.16-2.16)
Clashscore	141614	1585 (2.16-2.16)
Ramachandran outliers	138981	1560 (2.16-2.16)
Sidechain outliers	138945	1559 (2.16-2.16)
RSRZ outliers	127900	1456 (2.16-2.16)

The table below summarises the geometric issues observed across the polymeric chains and their fit to the electron density. The red, orange, yellow and green segments on the lower bar indicate the fraction of residues that contain outliers for  $\geq 3$ , 2, 1 and 0 types of geometric quality criteria respectively. A grey segment represents the fraction of residues that are not modelled. The numeric value for each fraction is indicated below the corresponding segment, with a dot representing fractions  $\leq 5\%$ . The upper red bar (where present) indicates the fraction of residues that have poor fit to the electron density. The numeric value is given above the bar.

Mol	Chain	Length	Quality of chain
1	A	550	

## 2 Entry composition [i](#)

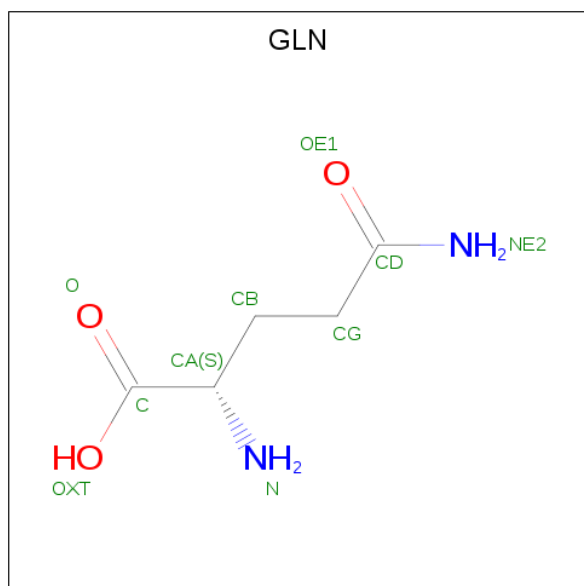
There are 3 unique types of molecules in this entry. The entry contains 4294 atoms, of which 0 are hydrogens and 0 are deuteriums.

In the tables below, the ZeroOcc column contains the number of atoms modelled with zero occupancy, the AltConf column contains the number of residues with at least one atom in alternate conformation and the Trace column contains the number of residues modelled with at most 2 atoms.

- Molecule 1 is a protein called CTP synthetase.

Mol	Chain	Residues	Atoms					ZeroOcc	AltConf	Trace
			Total	C	N	O	S			
1	A	531	4044	2592	711	734	7	0	0	0

- Molecule 2 is GLUTAMINE (three-letter code: GLN) (formula: C<sub>5</sub>H<sub>10</sub>N<sub>2</sub>O<sub>3</sub>).



Mol	Chain	Residues	Atoms				ZeroOcc	AltConf
			Total	C	N	O		
2	A	1	10	5	2	3	0	0

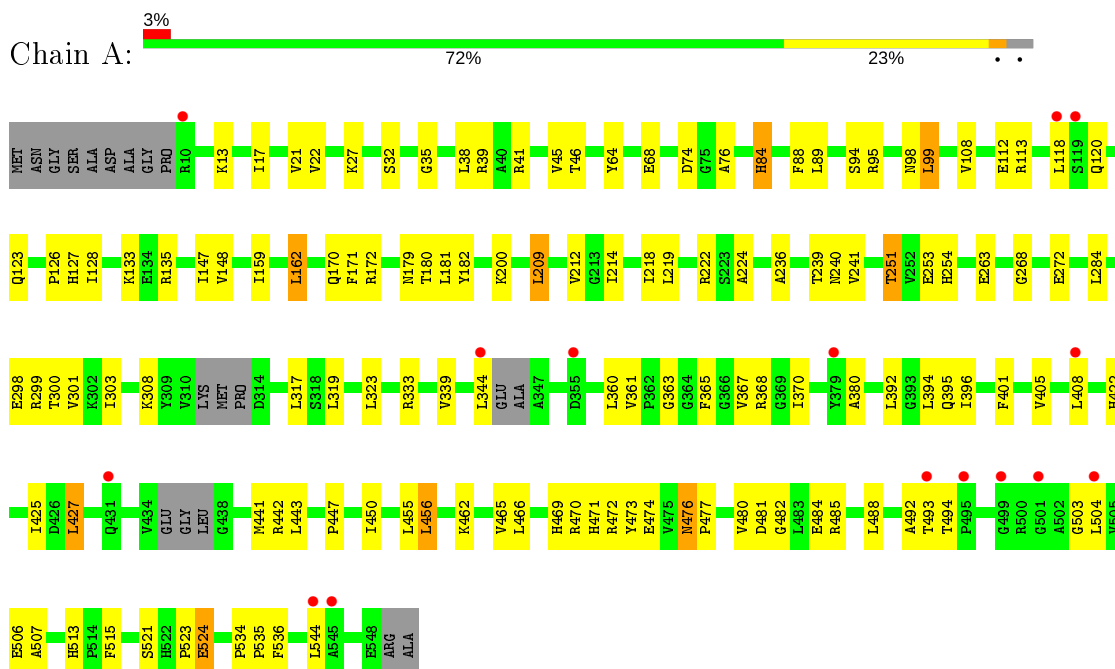
- Molecule 3 is water.

Mol	Chain	Residues	Atoms		ZeroOcc	AltConf
3	A	240	Total	O	0	0
			240	240		

### 3 Residue-property plots [i](#)

These plots are drawn for all protein, RNA, DNA and oligosaccharide chains in the entry. The first graphic for a chain summarises the proportions of the various outlier classes displayed in the second graphic. The second graphic shows the sequence view annotated by issues in geometry and electron density. Residues are color-coded according to the number of geometric quality criteria for which they contain at least one outlier: green = 0, yellow = 1, orange = 2 and red = 3 or more. A red dot above a residue indicates a poor fit to the electron density ( $RSRZ > 2$ ). Stretches of 2 or more consecutive residues without any outlier are shown as a green connector. Residues present in the sample, but not in the model, are shown in grey.

- Molecule 1: CTP synthetase



## 4 Data and refinement statistics

Property	Value	Source
Space group	I 2 2 2	Depositor
Cell constants a, b, c, $\alpha$ , $\beta$ , $\gamma$	85.73Å 120.88Å 143.32Å 90.00° 90.00° 90.00°	Depositor
Resolution (Å)	10.00 – 2.15 46.70 – 2.15	Depositor EDS
% Data completeness (in resolution range)	(Not available) (10.00-2.15) 98.9 (46.70-2.15)	Depositor EDS
$R_{merge}$	(Not available)	Depositor
$R_{sym}$	(Not available)	Depositor
$\langle I/\sigma(I) \rangle$ <sup>1</sup>	2.74 (at 2.16Å)	Xtrriage
Refinement program	CNS	Depositor
R, $R_{free}$	0.236 , 0.270 0.242 , 0.276	Depositor DCC
$R_{free}$ test set	4053 reflections (10.04%)	wwPDB-VP
Wilson B-factor (Å <sup>2</sup> )	39.9	Xtrriage
Anisotropy	0.364	Xtrriage
Bulk solvent $k_{sol}$ (e/Å <sup>3</sup> ), $B_{sol}$ (Å <sup>2</sup> )	0.35 , 68.2	EDS
L-test for twinning <sup>2</sup>	$\langle  L  \rangle = 0.52$ , $\langle L^2 \rangle = 0.35$	Xtrriage
Estimated twinning fraction	No twinning to report.	Xtrriage
$F_o, F_c$ correlation	0.94	EDS
Total number of atoms	4294	wwPDB-VP
Average B, all atoms (Å <sup>2</sup> )	39.0	wwPDB-VP

Xtrriage's analysis on translational NCS is as follows: *The largest off-origin peak in the Patterson function is 4.03% of the height of the origin peak. No significant pseudotranslation is detected.*

<sup>1</sup>Intensities estimated from amplitudes.

<sup>2</sup>Theoretical values of  $\langle |L| \rangle$ ,  $\langle L^2 \rangle$  for acentric reflections are 0.5, 0.333 respectively for untwinned datasets, and 0.375, 0.2 for perfectly twinned datasets.

## 5 Model quality [i](#)

### 5.1 Standard geometry [i](#)

The Z score for a bond length (or angle) is the number of standard deviations the observed value is removed from the expected value. A bond length (or angle) with  $|Z| > 5$  is considered an outlier worth inspection. RMSZ is the root-mean-square of all Z scores of the bond lengths (or angles).

Mol	Chain	Bond lengths		Bond angles	
		RMSZ	$\# Z  > 5$	RMSZ	$\# Z  > 5$
1	A	0.37	1/4130 (0.0%)	0.61	0/5616

All (1) bond length outliers are listed below:

Mol	Chain	Res	Type	Atoms	Z	Observed(Å)	Ideal(Å)
1	A	84	HIS	C-N	5.53	1.46	1.34

There are no bond angle outliers.

There are no chirality outliers.

There are no planarity outliers.

### 5.2 Too-close contacts [i](#)

In the following table, the Non-H and H(model) columns list the number of non-hydrogen atoms and hydrogen atoms in the chain respectively. The H(added) column lists the number of hydrogen atoms added and optimized by MolProbity. The Clashes column lists the number of clashes within the asymmetric unit, whereas Symm-Clashes lists symmetry related clashes.

Mol	Chain	Non-H	H(model)	H(added)	Clashes	Symm-Clashes
1	A	4044	0	4018	119	0
2	A	10	0	7	2	0
3	A	240	0	0	8	0
All	All	4294	0	4025	119	0

The all-atom clashscore is defined as the number of clashes found per 1000 atoms (including hydrogen atoms). The all-atom clashscore for this structure is 15.

All (119) close contacts within the same asymmetric unit are listed below, sorted by their clash magnitude.

Atom-1	Atom-2	Interatomic distance (Å)	Clash overlap (Å)
1:A:462:LYS:HE3	1:A:465:VAL:HG12	1.53	0.91
1:A:39:ARG:NH1	1:A:39:ARG:HB3	1.87	0.89
1:A:209:LEU:HD22	1:A:214:ILE:HB	1.61	0.81
1:A:534:PRO:HG2	1:A:535:PRO:HD3	1.60	0.81
1:A:395:GLN:HB3	1:A:425:ILE:HD13	1.63	0.79
1:A:13:LYS:HZ2	1:A:179:ASN:HD22	1.37	0.73
1:A:39:ARG:HB3	1:A:39:ARG:HH11	1.55	0.70
1:A:301:VAL:CG1	1:A:544:LEU:HD23	2.23	0.69
1:A:469:HIS:HD2	1:A:471:HIS:HE1	1.40	0.69
1:A:442:ARG:HD3	1:A:474:GLU:OE1	1.94	0.68
1:A:99:LEU:HD21	1:A:135:ARG:HD3	1.76	0.66
1:A:471:HIS:HB2	2:A:610:GLN:O	1.97	0.65
1:A:159:ILE:HG23	3:A:790:HOH:O	1.97	0.65
1:A:482:GLY:HA2	1:A:485:ARG:HH11	1.62	0.64
1:A:441:MET:HG2	1:A:472:ARG:HB3	1.82	0.62
1:A:13:LYS:NZ	1:A:179:ASN:ND2	2.48	0.62
1:A:123:GLN:H	1:A:127:HIS:HD1	1.46	0.62
1:A:112:GLU:OE2	1:A:113:ARG:CD	2.47	0.62
1:A:513:HIS:HD2	1:A:515:PHE:H	1.48	0.61
1:A:301:VAL:HG13	1:A:544:LEU:HD23	1.81	0.61
1:A:181:LEU:HD23	1:A:182:TYR:N	2.15	0.61
1:A:209:LEU:O	1:A:212:VAL:HG22	2.01	0.60
1:A:319:LEU:HD12	1:A:524:GLU:HG2	1.82	0.60
1:A:13:LYS:HZ2	1:A:179:ASN:ND2	2.00	0.59
1:A:112:GLU:OE2	1:A:113:ARG:HD3	2.03	0.59
1:A:239:THR:O	1:A:240:ASN:HB2	2.03	0.59
1:A:395:GLN:CB	1:A:425:ILE:HD13	2.31	0.58
1:A:13:LYS:NZ	1:A:179:ASN:HD22	2.00	0.58
1:A:476:ASN:C	1:A:476:ASN:HD22	2.07	0.57
1:A:298:GLU:C	1:A:299:ARG:HG3	2.24	0.57
1:A:462:LYS:HE3	1:A:465:VAL:CG1	2.28	0.57
1:A:38:LEU:HD13	1:A:147:ILE:HG21	1.86	0.56
1:A:469:HIS:CD2	1:A:471:HIS:HE1	2.23	0.56
1:A:222:ARG:HH12	1:A:251:THR:HG22	1.69	0.56
1:A:447:PRO:HA	1:A:466:LEU:HD23	1.87	0.56
1:A:35:GLY:HA3	1:A:89:LEU:HD21	1.86	0.56
1:A:513:HIS:CD2	1:A:515:PHE:H	2.23	0.55
1:A:133:LYS:HG2	1:A:171:PHE:CE1	2.41	0.55
1:A:476:ASN:HD22	1:A:477:PRO:N	2.04	0.55
1:A:172:ARG:HD3	1:A:180:THR:OG1	2.07	0.55
1:A:442:ARG:CD	1:A:474:GLU:OE1	2.56	0.54
1:A:45:VAL:HG12	1:A:46:THR:N	2.23	0.54

*Continued on next page...*

*Continued from previous page...*

Atom-1	Atom-2	Interatomic distance (Å)	Clash overlap (Å)
1:A:524:GLU:HG3	1:A:536:PHE:CZ	2.43	0.54
1:A:301:VAL:HG11	1:A:544:LEU:HD23	1.90	0.53
1:A:469:HIS:HD2	1:A:471:HIS:CE1	2.25	0.53
1:A:112:GLU:OE2	1:A:113:ARG:HD2	2.08	0.53
1:A:493:THR:HG22	1:A:494:THR:N	2.23	0.53
1:A:534:PRO:CG	1:A:535:PRO:HD3	2.37	0.53
1:A:380:ALA:O	1:A:513:HIS:HE1	1.92	0.53
1:A:224:ALA:O	1:A:251:THR:HG23	2.09	0.52
1:A:95:ARG:NH1	3:A:728:HOH:O	2.42	0.52
1:A:263:GLU:HG2	1:A:284:LEU:HD11	1.92	0.51
1:A:64:TYR:OH	2:A:610:GLN:NE2	2.36	0.51
1:A:443:LEU:HA	1:A:469:HIS:O	2.12	0.50
1:A:482:GLY:HA2	1:A:485:ARG:NH1	2.25	0.50
1:A:455:LEU:HD13	1:A:455:LEU:C	2.33	0.50
1:A:181:LEU:HD21	1:A:218:ILE:HD12	1.94	0.49
1:A:224:ALA:HA	1:A:251:THR:CG2	2.43	0.49
1:A:159:ILE:HA	3:A:790:HOH:O	2.13	0.49
1:A:268:GLY:O	1:A:272:GLU:HG3	2.11	0.49
1:A:39:ARG:HB3	1:A:39:ARG:CZ	2.41	0.49
1:A:39:ARG:CB	1:A:39:ARG:HH11	2.23	0.49
1:A:133:LYS:NZ	1:A:170:GLN:HE21	2.11	0.49
1:A:41:ARG:HE	1:A:272:GLU:CD	2.16	0.48
1:A:401:PHE:CE2	1:A:488:LEU:HB2	2.48	0.48
1:A:21:VAL:HG12	1:A:22:VAL:HG13	1.95	0.48
1:A:360:LEU:HD23	1:A:361:VAL:N	2.29	0.48
1:A:367:VAL:O	1:A:370:ILE:HG12	2.14	0.48
1:A:442:ARG:NH2	1:A:506:GLU:OE2	2.47	0.47
1:A:200:LYS:NZ	3:A:771:HOH:O	2.47	0.47
1:A:492:ALA:HB3	1:A:507:ALA:HB3	1.96	0.47
1:A:74:ASP:OD2	1:A:94:SER:HB2	2.15	0.47
1:A:392:LEU:O	1:A:396:ILE:HG12	2.15	0.46
1:A:118:LEU:HD12	1:A:118:LEU:N	2.30	0.46
1:A:39:ARG:HD3	1:A:89:LEU:O	2.16	0.46
1:A:401:PHE:CE1	1:A:405:VAL:HG11	2.50	0.46
1:A:469:HIS:CE1	1:A:521:SER:HB3	2.51	0.45
1:A:319:LEU:O	1:A:323:LEU:HD23	2.16	0.45
1:A:427:LEU:HD13	1:A:473:TYR:CE1	2.52	0.45
1:A:450:ILE:HG23	1:A:456:LEU:HD13	1.98	0.45
1:A:394:LEU:C	1:A:394:LEU:HD23	2.37	0.45
1:A:471:HIS:HD2	1:A:473:TYR:O	2.00	0.45
1:A:120:GLN:HB2	3:A:660:HOH:O	2.17	0.45

*Continued on next page...*



*Continued from previous page...*

Atom-1	Atom-2	Interatomic distance (Å)	Clash overlap (Å)
1:A:368:ARG:CZ	1:A:368:ARG:HB3	2.47	0.45
1:A:339:VAL:CG1	1:A:344:LEU:HD11	2.47	0.44
1:A:118:LEU:N	1:A:118:LEU:CD1	2.81	0.44
1:A:480:VAL:O	1:A:484:GLU:HG3	2.17	0.44
1:A:513:HIS:HD2	1:A:515:PHE:N	2.15	0.44
1:A:308:LYS:NZ	1:A:365:PHE:O	2.39	0.43
1:A:456:LEU:HD12	1:A:492:ALA:HB2	1.98	0.43
1:A:493:THR:CG2	1:A:494:THR:N	2.82	0.43
1:A:113:ARG:HD2	1:A:113:ARG:HA	1.63	0.43
1:A:408:LEU:HD22	1:A:422:HIS:CD2	2.54	0.43
1:A:319:LEU:HA	1:A:524:GLU:HG2	1.99	0.43
1:A:523:PRO:HG2	1:A:536:PHE:HE1	1.83	0.43
1:A:493:THR:HG23	1:A:503:GLY:O	2.19	0.42
1:A:469:HIS:HE1	3:A:744:HOH:O	2.01	0.42
1:A:84:HIS:NE2	1:A:317:LEU:HD21	2.34	0.42
1:A:481:ASP:O	1:A:485:ARG:HG3	2.20	0.42
1:A:76:ALA:HB2	1:A:95:ARG:HB2	2.01	0.42
1:A:133:LYS:HZ2	1:A:170:GLN:HE21	1.67	0.42
1:A:17:ILE:HG22	1:A:27:LYS:HD2	2.01	0.42
1:A:303:ILE:C	1:A:303:ILE:HD12	2.40	0.42
1:A:363:GLY:HA2	1:A:392:LEU:HB3	2.02	0.41
1:A:219:LEU:HG	1:A:241:VAL:HG21	2.03	0.41
1:A:524:GLU:HG3	1:A:536:PHE:HZ	1.86	0.41
1:A:162:LEU:HA	1:A:162:LEU:HD12	1.82	0.41
1:A:162:LEU:HD22	3:A:790:HOH:O	2.21	0.41
1:A:239:THR:O	1:A:240:ASN:CB	2.67	0.41
1:A:300:THR:HG22	1:A:333:ARG:HB3	2.03	0.41
1:A:442:ARG:HH22	1:A:506:GLU:CD	2.24	0.41
1:A:236:ALA:HB1	1:A:241:VAL:O	2.21	0.40
1:A:301:VAL:HG11	1:A:544:LEU:HA	2.03	0.40
1:A:456:LEU:HD23	1:A:456:LEU:HA	1.94	0.40
1:A:470:ARG:HD2	3:A:746:HOH:O	2.21	0.40
1:A:32:SER:HB3	1:A:88:PHE:CG	2.56	0.40
1:A:253:GLU:HG3	1:A:254:HIS:CE1	2.56	0.40
1:A:319:LEU:HD12	1:A:524:GLU:CG	2.49	0.40
1:A:108:VAL:HG21	1:A:128:ILE:HD13	2.03	0.40

There are no symmetry-related clashes.

## 5.3 Torsion angles [i](#)

### 5.3.1 Protein backbone [i](#)

In the following table, the Percentiles column shows the percent Ramachandran outliers of the chain as a percentile score with respect to all X-ray entries followed by that with respect to entries of similar resolution.

The Analysed column shows the number of residues for which the backbone conformation was analysed, and the total number of residues.

Mol	Chain	Analysed	Favoured	Allowed	Outliers	Percentiles
1	A	523/550 (95%)	507 (97%)	16 (3%)	0	100 100

There are no Ramachandran outliers to report.

### 5.3.2 Protein sidechains [i](#)

In the following table, the Percentiles column shows the percent sidechain outliers of the chain as a percentile score with respect to all X-ray entries followed by that with respect to entries of similar resolution.

The Analysed column shows the number of residues for which the sidechain conformation was analysed, and the total number of residues.

Mol	Chain	Analysed	Rotameric	Outliers	Percentiles
1	A	414/455 (91%)	401 (97%)	13 (3%)	40 39

All (13) residues with a non-rotameric sidechain are listed below:

Mol	Chain	Res	Type
1	A	68	GLU
1	A	98	ASN
1	A	99	LEU
1	A	126	PRO
1	A	148	VAL
1	A	162	LEU
1	A	209	LEU
1	A	251	THR
1	A	427	LEU
1	A	456	LEU
1	A	476	ASN
1	A	504	LEU
1	A	524	GLU

Some sidechains can be flipped to improve hydrogen bonding and reduce clashes. All (11) such sidechains are listed below:

Mol	Chain	Res	Type
1	A	55	ASN
1	A	120	GLN
1	A	170	GLN
1	A	179	ASN
1	A	203	GLN
1	A	240	ASN
1	A	422	HIS
1	A	469	HIS
1	A	471	HIS
1	A	476	ASN
1	A	513	HIS

### 5.3.3 RNA [i](#)

There are no RNA molecules in this entry.

## 5.4 Non-standard residues in protein, DNA, RNA chains [i](#)

There are no non-standard protein/DNA/RNA residues in this entry.

## 5.5 Carbohydrates [i](#)

There are no monosaccharides in this entry.

## 5.6 Ligand geometry [i](#)

1 ligand is modelled in this entry.

In the following table, the Counts columns list the number of bonds (or angles) for which Mogul statistics could be retrieved, the number of bonds (or angles) that are observed in the model and the number of bonds (or angles) that are defined in the Chemical Component Dictionary. The Link column lists molecule types, if any, to which the group is linked. The Z score for a bond length (or angle) is the number of standard deviations the observed value is removed from the expected value. A bond length (or angle) with  $|Z| > 2$  is considered an outlier worth inspection. RMSZ is the root-mean-square of all Z scores of the bond lengths (or angles).

Mol	Type	Chain	Res	Link	Bond lengths			Bond angles		
					Counts	RMSZ	$\# Z  > 2$	Counts	RMSZ	$\# Z  > 2$
2	GLN	A	610	-	5,9,9	2.60	1 (20%)	5,11,11	0.81	0

In the following table, the Chirals column lists the number of chiral outliers, the number of chiral centers analysed, the number of these observed in the model and the number defined in the Chemical Component Dictionary. Similar counts are reported in the Torsion and Rings columns. '-' means no outliers of that kind were identified.

Mol	Type	Chain	Res	Link	Chirals	Torsions	Rings
2	GLN	A	610	-	-	0/5/9/9	-

All (1) bond length outliers are listed below:

Mol	Chain	Res	Type	Atoms	Z	Observed(Å)	Ideal(Å)
2	A	610	GLN	CA-N	-5.61	1.34	1.47

There are no bond angle outliers.

There are no chirality outliers.

There are no torsion outliers.

There are no ring outliers.

1 monomer is involved in 2 short contacts:

Mol	Chain	Res	Type	Clashes	Symm-Clashes
2	A	610	GLN	2	0

## 5.7 Other polymers [i](#)

There are no such residues in this entry.

## 5.8 Polymer linkage issues [i](#)

There are no chain breaks in this entry.

## 6 Fit of model and data [i](#)

### 6.1 Protein, DNA and RNA chains [i](#)

In the following table, the column labelled ‘#RSRZ> 2’ contains the number (and percentage) of RSRZ outliers, followed by percent RSRZ outliers for the chain as percentile scores relative to all X-ray entries and entries of similar resolution. The OWAB column contains the minimum, median, 95<sup>th</sup> percentile and maximum values of the occupancy-weighted average B-factor per residue. The column labelled ‘Q< 0.9’ lists the number of (and percentage) of residues with an average occupancy less than 0.9.

Mol	Chain	Analysed	<RSRZ>	#RSRZ>2	OWAB(Å <sup>2</sup> )	Q<0.9
1	A	531/550 (96%)	0.38	15 (2%) 53 62	24, 37, 57, 66	0

All (15) RSRZ outliers are listed below:

Mol	Chain	Res	Type	RSRZ
1	A	118	LEU	5.1
1	A	431	GLN	4.2
1	A	545	ALA	4.2
1	A	499	GLY	3.9
1	A	495	PRO	3.7
1	A	379	TYR	3.3
1	A	10	ARG	2.9
1	A	544	LEU	2.8
1	A	355	ASP	2.8
1	A	119	SER	2.7
1	A	501	GLY	2.5
1	A	344	LEU	2.4
1	A	408	LEU	2.1
1	A	504	LEU	2.0
1	A	493	THR	2.0

### 6.2 Non-standard residues in protein, DNA, RNA chains [i](#)

There are no non-standard protein/DNA/RNA residues in this entry.

### 6.3 Carbohydrates [i](#)

There are no monosaccharides in this entry.

## 6.4 Ligands [i](#)

In the following table, the Atoms column lists the number of modelled atoms in the group and the number defined in the chemical component dictionary. The B-factors column lists the minimum, median, 95<sup>th</sup> percentile and maximum values of B factors of atoms in the group. The column labelled 'Q< 0.9' lists the number of atoms with occupancy less than 0.9.

Mol	Type	Chain	Res	Atoms	RSCC	RSR	B-factors(Å <sup>2</sup> )	Q<0.9
2	GLN	A	610	10/10	0.84	0.17	35,39,40,40	0

## 6.5 Other polymers [i](#)

There are no such residues in this entry.