



Full wwPDB X-ray Structure Validation Report ⓘ

Aug 15, 2023 – 09:42 PM EDT

PDB ID : 1T2E
Title : Plasmodium falciparum lactate dehydrogenase S245A, A327P mutant complexed with NADH and oxamate
Authors : Cameron, A.; Read, J.; Tranter, R.; Winter, V.J.; Sessions, R.B.; Brady, R.L.; Vivas, L.; Easton, A.; Kendrick, H.; Croft, S.L.; Barros, D.; Lavandera, J.L.; Martin, J.J.; Risco, F.; Garcia-Ochoa, S.; Gamo, F.J.; Sanz, L.; Leon, L.; Ruiz, J.R.; Gabarro, R.; Mallo, A.; De Las Heras, F.G.
Deposited on : 2004-04-21
Resolution : 1.85 Å(reported)

This is a Full wwPDB X-ray Structure Validation Report for a publicly released PDB entry.

We welcome your comments at validation@mail.wwpdb.org

A user guide is available at

<https://www.wwpdb.org/validation/2017/XrayValidationReportHelp>

with specific help available everywhere you see the ⓘ symbol.

The types of validation reports are described at

<http://www.wwpdb.org/validation/2017/FAQs#types>.

The following versions of software and data (see [references ⓘ](#)) were used in the production of this report:

MolProbity : 4.02b-467
Mogul : 1.8.5 (274361), CSD as541be (2020)
Xtriage (Phenix) : 1.13
EDS : 2.35
buster-report : 1.1.7 (2018)
Percentile statistics : 20191225.v01 (using entries in the PDB archive December 25th 2019)
Refmac : 5.8.0158
CCP4 : 7.0.044 (Gargrove)
Ideal geometry (proteins) : Engh & Huber (2001)

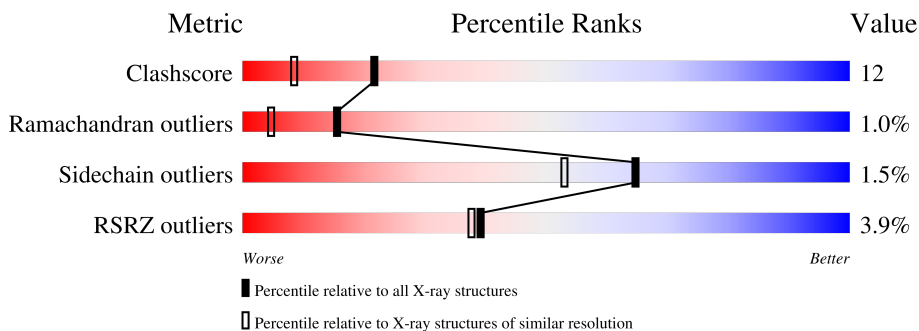
1 Overall quality at a glance

The following experimental techniques were used to determine the structure:

X-RAY DIFFRACTION

The reported resolution of this entry is 1.85 Å.

Percentile scores (ranging between 0-100) for global validation metrics of the entry are shown in the following graphic. The table shows the number of entries on which the scores are based.



Metric	Whole archive (#Entries)	Similar resolution (#Entries, resolution range(Å))
Clashscore	141614	2625 (1.86-1.86)
Ramachandran outliers	138981	2592 (1.86-1.86)
Sidechain outliers	138945	2592 (1.86-1.86)
RSRZ outliers	127900	2436 (1.86-1.86)

The table below summarises the geometric issues observed across the polymeric chains and their fit to the electron density. The red, orange, yellow and green segments of the lower bar indicate the fraction of residues that contain outliers for ≥ 3 , 2, 1 and 0 types of geometric quality criteria respectively. A grey segment represents the fraction of residues that are not modelled. The numeric value for each fraction is indicated below the corresponding segment, with a dot representing fractions $\leq 5\%$. The upper red bar (where present) indicates the fraction of residues that have poor fit to the electron density. The numeric value is given above the bar.

Mol	Chain	Length	Quality of chain
1	A	322	

Ideal geometry (DNA, RNA) : Parkinson et al. (1996)
 Validation Pipeline (wwPDB-VP) : 2.35

2 Entry composition [i](#)

There are 5 unique types of molecules in this entry. The entry contains 2702 atoms, of which 0 are hydrogens and 0 are deuteriums.

In the tables below, the ZeroOcc column contains the number of atoms modelled with zero occupancy, the AltConf column contains the number of residues with at least one atom in alternate conformation and the Trace column contains the number of residues modelled with at most 2 atoms.

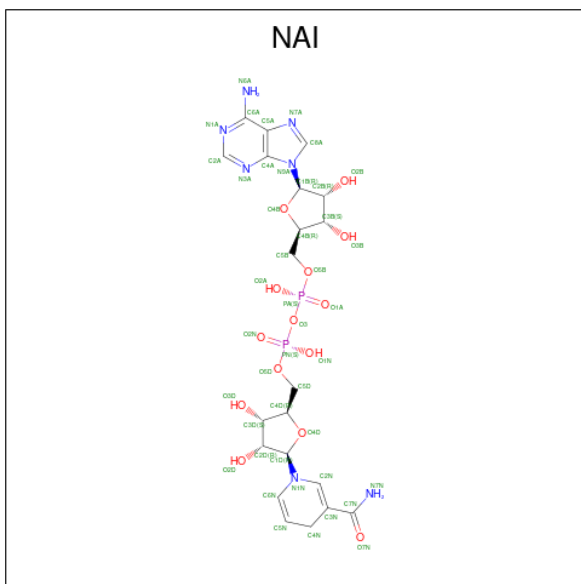
- Molecule 1 is a protein called L-lactate dehydrogenase.

Mol	Chain	Residues	Atoms					ZeroOcc	AltConf	Trace
			Total	C	N	O	S			
1	A	317	2404	1532	413	446	13	39	0	0

There are 8 discrepancies between the modelled and reference sequences:

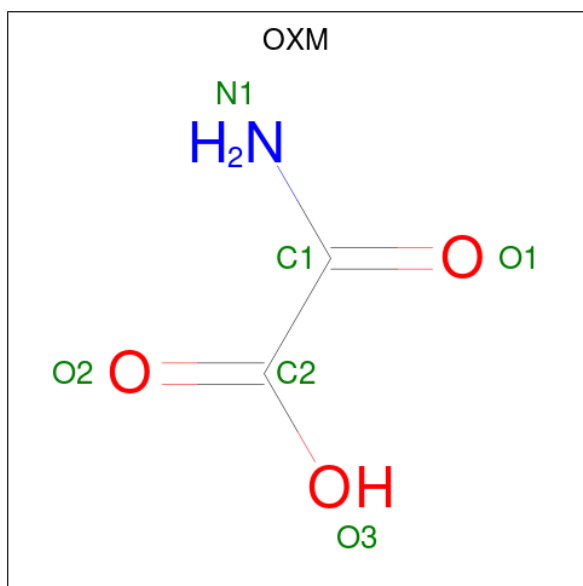
Chain	Residue	Modelled	Actual	Comment	Reference
A	245	ALA	SER	engineered mutation	UNP Q27743
A	327	PRO	ALA	engineered mutation	UNP Q27743
A	330	HIS	-	expression tag	UNP Q27743
A	331	HIS	-	expression tag	UNP Q27743
A	332	HIS	-	expression tag	UNP Q27743
A	333	HIS	-	expression tag	UNP Q27743
A	334	HIS	-	expression tag	UNP Q27743
A	335	HIS	-	expression tag	UNP Q27743

- Molecule 2 is 1,4-DIHYDRONICOTINAMIDE ADENINE DINUCLEOTIDE (three-letter code: NAI) (formula: C₂₁H₂₉N₇O₁₄P₂).



Mol	Chain	Residues	Atoms				ZeroOcc	AltConf	
			Total	C	N	O			P
2	A	1	44	21	7	14	2	0	0

- Molecule 3 is OXAMIC ACID (three-letter code: OXM) (formula: $C_2H_3NO_3$).



Mol	Chain	Residues	Atoms				ZeroOcc	AltConf
			Total	C	N	O		
3	A	1	6	2	1	3	0	0

- Molecule 4 is GLYCEROL (three-letter code: GOL) (formula: $C_3H_8O_3$).



Mol	Chain	Residues	Atoms			ZeroOcc	AltConf
4	A	1	Total	C	O	0	0
			6	3	3		

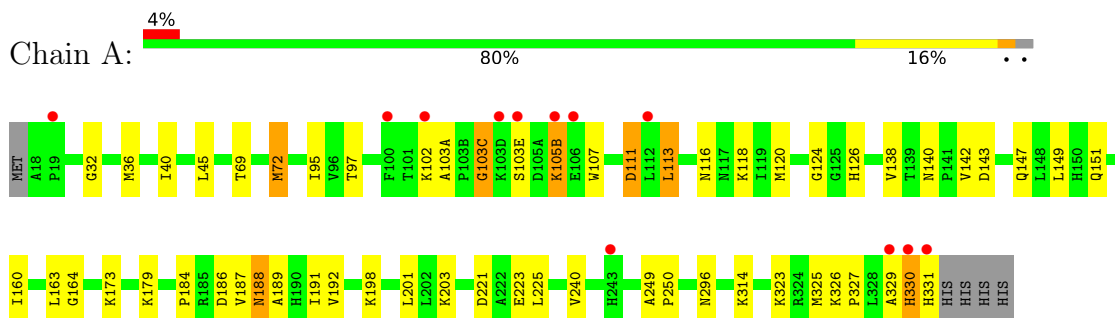
- Molecule 5 is water.

Mol	Chain	Residues	Atoms		ZeroOcc	AltConf
5	A	242	Total	O	0	0
			242	242		

3 Residue-property plots

These plots are drawn for all protein, RNA, DNA and oligosaccharide chains in the entry. The first graphic for a chain summarises the proportions of the various outlier classes displayed in the second graphic. The second graphic shows the sequence view annotated by issues in geometry and electron density. Residues are color-coded according to the number of geometric quality criteria for which they contain at least one outlier: green = 0, yellow = 1, orange = 2 and red = 3 or more. A red dot above a residue indicates a poor fit to the electron density ($RSRZ > 2$). Stretches of 2 or more consecutive residues without any outlier are shown as a green connector. Residues present in the sample, but not in the model, are shown in grey.

- Molecule 1: L-lactate dehydrogenase



4 Data and refinement statistics i

Property	Value	Source
Space group	I 2 2 2	Depositor
Cell constants a, b, c, α , β , γ	79.07Å 85.34Å 89.71Å 90.00° 90.00° 90.00°	Depositor
Resolution (Å)	20.00 – 1.85 19.27 – 1.85	Depositor EDS
% Data completeness (in resolution range)	94.0 (20.00-1.85) 94.1 (19.27-1.85)	Depositor EDS
R_{merge}	(Not available)	Depositor
R_{sym}	0.06	Depositor
$\langle I/\sigma(I) \rangle$ ¹	2.96 (at 1.85Å)	Xtrriage
Refinement program	REFMAC 5.0	Depositor
R, R_{free}	0.156 , 0.191 0.159 , (Not available)	Depositor DCC
R_{free} test set	No test flags present.	wwPDB-VP
Wilson B-factor (Å ²)	13.5	Xtrriage
Anisotropy	0.623	Xtrriage
Bulk solvent k_{sol} (e/Å ³), B_{sol} (Å ²)	0.40 , 52.9	EDS
L-test for twinning ²	$\langle L \rangle = 0.48$, $\langle L^2 \rangle = 0.32$	Xtrriage
Estimated twinning fraction	0.014 for -h,-l,-k	Xtrriage
F_o, F_c correlation	0.95	EDS
Total number of atoms	2702	wwPDB-VP
Average B, all atoms (Å ²)	17.0	wwPDB-VP

Xtrriage's analysis on translational NCS is as follows: *The largest off-origin peak in the Patterson function is 6.07% of the height of the origin peak. No significant pseudotranslation is detected.*

¹Intensities estimated from amplitudes.

²Theoretical values of $\langle |L| \rangle$, $\langle L^2 \rangle$ for acentric reflections are 0.5, 0.333 respectively for untwinned datasets, and 0.375, 0.2 for perfectly twinned datasets.

5 Model quality

5.1 Standard geometry

Bond lengths and bond angles in the following residue types are not validated in this section: GOL, NAI, OXM

The Z score for a bond length (or angle) is the number of standard deviations the observed value is removed from the expected value. A bond length (or angle) with $|Z| > 5$ is considered an outlier worth inspection. RMSZ is the root-mean-square of all Z scores of the bond lengths (or angles).

Mol	Chain	Bond lengths		Bond angles	
		RMSZ	# $ Z > 5$	RMSZ	# $ Z > 5$
1	A	1.08	5/2444 (0.2%)	1.07	5/3312 (0.2%)

All (5) bond length outliers are listed below:

Mol	Chain	Res	Type	Atoms	Z	Observed(Å)	Ideal(Å)
1	A	103(A)	ALA	C-N	-18.00	1.00	1.34
1	A	113	LEU	C-N	-14.13	1.07	1.34
1	A	116	ASN	C-N	-5.74	1.20	1.34
1	A	192	VAL	CB-CG1	5.35	1.64	1.52
1	A	72	MET	SD-CE	-5.20	1.48	1.77

All (5) bond angle outliers are listed below:

Mol	Chain	Res	Type	Atoms	Z	Observed(°)	Ideal(°)
1	A	221	ASP	CB-CG-OD2	6.63	124.26	118.30
1	A	143	ASP	CB-CG-OD2	6.60	124.24	118.30
1	A	186	ASP	CB-CG-OD2	5.92	123.62	118.30
1	A	103(C)	GLY	C-N-CA	-5.26	108.55	121.70
1	A	111	ASP	CB-CG-OD2	5.08	122.87	118.30

There are no chirality outliers.

There are no planarity outliers.

5.2 Too-close contacts

In the following table, the Non-H and H(model) columns list the number of non-hydrogen atoms and hydrogen atoms in the chain respectively. The H(added) column lists the number of hydrogen atoms added and optimized by MolProbity. The Clashes column lists the number of clashes within the asymmetric unit, whereas Symm-Clashes lists symmetry-related clashes.

Mol	Chain	Non-H	H(model)	H(added)	Clashes	Symm-Clashes
1	A	2404	0	2483	55	2
2	A	44	0	20	6	0
3	A	6	0	2	0	0
4	A	6	0	8	2	0
5	A	242	0	0	8	5
All	All	2702	0	2513	58	5

The all-atom clashscore is defined as the number of clashes found per 1000 atoms (including hydrogen atoms). The all-atom clashscore for this structure is 12.

All (58) close contacts within the same asymmetric unit are listed below, sorted by their clash magnitude.

Atom-1	Atom-2	Interatomic distance (Å)	Clash overlap (Å)
2:A:336:NAI:O5D	2:A:336:NAI:C5D	1.66	1.43
1:A:103(E):SER:OG	1:A:105(B):LYS:HD2	1.23	1.34
1:A:103(E):SER:OG	1:A:105(B):LYS:CD	2.01	1.08
1:A:296:ASN:ND2	5:A:576:HOH:O	2.02	0.93
2:A:336:NAI:C5D	2:A:336:NAI:PN	2.64	0.85
1:A:103(E):SER:CB	1:A:105(B):LYS:NZ	2.42	0.82
1:A:103(E):SER:HB3	1:A:105(B):LYS:NZ	1.96	0.81
1:A:103(E):SER:CB	1:A:105(B):LYS:CE	2.60	0.79
1:A:113:LEU:C	1:A:113:LEU:HD23	2.03	0.78
1:A:103(E):SER:HB2	1:A:105(B):LYS:HE3	1.70	0.72
1:A:147:GLN:HG2	1:A:151:GLN:HE21	1.57	0.70
1:A:103(E):SER:OG	1:A:105(B):LYS:CE	2.41	0.68
1:A:69:THR:HA	1:A:72:MET:HE1	1.74	0.68
1:A:329:ALA:C	1:A:331:HIS:H	1.98	0.66
1:A:103(E):SER:HB3	1:A:105(B):LYS:HZ1	1.60	0.66
1:A:326:LYS:HB3	1:A:327:PRO:HD3	1.79	0.65
1:A:138:VAL:O	2:A:336:NAI:H2N	1.98	0.63
1:A:102:LYS:HZ2	1:A:240:VAL:HG21	1.63	0.62
1:A:330:HIS:HD2	5:A:509:HOH:O	1.81	0.62
1:A:102:LYS:NZ	1:A:107:TRP:CD1	2.70	0.59
1:A:102:LYS:NZ	1:A:240:VAL:HG21	2.17	0.58
1:A:124:GLY:CA	1:A:149:LEU:HD11	2.36	0.56
1:A:330:HIS:HE1	5:A:518:HOH:O	1.88	0.56
1:A:103(E):SER:CB	1:A:105(B):LYS:HZ2	2.17	0.56
1:A:188:ASN:ND2	4:A:338:GOL:O2	2.32	0.55
1:A:124:GLY:HA2	1:A:149:LEU:HD11	1.87	0.55
1:A:140:ASN:HD22	1:A:142:VAL:H	1.55	0.54
1:A:173:LYS:HG2	1:A:187:VAL:O	2.07	0.54
1:A:102:LYS:HD3	1:A:107:TRP:CD1	2.42	0.54

Continued on next page...

Continued from previous page...

Atom-1	Atom-2	Interatomic distance (Å)	Clash overlap (Å)
1:A:102:LYS:HD3	1:A:107:TRP:HD1	1.73	0.52
2:A:336:NAI:O1N	5:A:566:HOH:O	2.19	0.51
1:A:249:ALA:N	1:A:250:PRO:CD	2.73	0.51
1:A:69:THR:HA	1:A:72:MET:CE	2.38	0.50
1:A:191:ILE:HG12	1:A:201:LEU:HG	1.93	0.50
1:A:113:LEU:C	1:A:113:LEU:CD2	2.78	0.49
1:A:179:LYS:NZ	1:A:223:GLU:OE1	2.44	0.49
1:A:329:ALA:C	1:A:331:HIS:N	2.65	0.49
1:A:103(E):SER:OG	1:A:105(B):LYS:NZ	2.45	0.49
1:A:126:HIS:HE1	5:A:579:HOH:O	1.96	0.48
1:A:124:GLY:CA	1:A:149:LEU:CD1	2.91	0.48
1:A:97:THR:HB	2:A:336:NAI:H51N	1.96	0.47
1:A:179:LYS:CE	1:A:223:GLU:OE1	2.62	0.47
1:A:40:ILE:HG23	1:A:45:LEU:HB2	1.96	0.46
1:A:203:LYS:HE3	1:A:225:LEU:HD23	1.99	0.45
1:A:102:LYS:HZ2	1:A:240:VAL:CG2	2.28	0.45
1:A:113:LEU:CD1	1:A:325:MET:HB3	2.47	0.45
1:A:314:LYS:HA	1:A:314:LYS:HD3	1.86	0.44
1:A:36:MET:SD	1:A:95:ILE:HG21	2.58	0.43
1:A:323:LYS:HE2	5:A:523:HOH:O	2.17	0.42
1:A:111:ASP:HA	5:A:563:HOH:O	2.18	0.42
1:A:160:ILE:O	1:A:160:ILE:HG23	2.20	0.42
1:A:163:LEU:HD23	2:A:336:NAI:C7N	2.49	0.41
1:A:120:MET:O	1:A:149:LEU:HD13	2.20	0.41
1:A:32:GLY:HA2	1:A:36:MET:HE2	2.02	0.41
1:A:188:ASN:HD22	1:A:189:ALA:H	1.67	0.41
1:A:147:GLN:HG2	5:A:518:HOH:O	2.20	0.40
1:A:188:ASN:HD21	4:A:338:GOL:C2	2.33	0.40
1:A:329:ALA:O	1:A:331:HIS:N	2.50	0.40

All (5) symmetry-related close contacts are listed below. The label for Atom-2 includes the symmetry operator and encoded unit-cell translations to be applied.

Atom-1	Atom-2	Interatomic distance (Å)	Clash overlap (Å)
5:A:560:HOH:O	5:A:571:HOH:O[6_555]	0.88	1.32
5:A:574:HOH:O	5:A:574:HOH:O[2_665]	1.12	1.08
5:A:455:HOH:O	5:A:551:HOH:O[4_565]	1.23	0.97
1:A:118:LYS:NZ	5:A:554:HOH:O[6_555]	1.84	0.36
1:A:118:LYS:CE	5:A:554:HOH:O[6_555]	2.19	0.01

5.3 Torsion angles [i](#)

5.3.1 Protein backbone [i](#)

In the following table, the Percentiles column shows the percent Ramachandran outliers of the chain as a percentile score with respect to all X-ray entries followed by that with respect to entries of similar resolution.

The Analysed column shows the number of residues for which the backbone conformation was analysed, and the total number of residues.

Mol	Chain	Analysed	Favoured	Allowed	Outliers	Percentiles
1	A	315/322 (98%)	304 (96%)	8 (2%)	3 (1%)	15 5

All (3) Ramachandran outliers are listed below:

Mol	Chain	Res	Type
1	A	330	HIS
1	A	103(C)	GLY
1	A	164	GLY

5.3.2 Protein sidechains [i](#)

In the following table, the Percentiles column shows the percent sidechain outliers of the chain as a percentile score with respect to all X-ray entries followed by that with respect to entries of similar resolution.

The Analysed column shows the number of residues for which the sidechain conformation was analysed, and the total number of residues.

Mol	Chain	Analysed	Rotameric	Outliers	Percentiles
1	A	264/269 (98%)	260 (98%)	4 (2%)	65 53

All (4) residues with a non-rotameric sidechain are listed below:

Mol	Chain	Res	Type
1	A	105(B)	LYS
1	A	184	PRO
1	A	188	ASN
1	A	198	LYS

Sometimes sidechains can be flipped to improve hydrogen bonding and reduce clashes. All (8) such sidechains are listed below:

Mol	Chain	Res	Type
1	A	132(B)	ASN
1	A	140	ASN
1	A	151	GLN
1	A	188	ASN
1	A	210(B)	GLN
1	A	234	ASN
1	A	296	ASN
1	A	330	HIS

5.3.3 RNA [i](#)

There are no RNA molecules in this entry.

5.4 Non-standard residues in protein, DNA, RNA chains [i](#)

There are no non-standard protein/DNA/RNA residues in this entry.

5.5 Carbohydrates [i](#)

There are no monosaccharides in this entry.

5.6 Ligand geometry [i](#)

3 ligands are modelled in this entry.

In the following table, the Counts columns list the number of bonds (or angles) for which Mogul statistics could be retrieved, the number of bonds (or angles) that are observed in the model and the number of bonds (or angles) that are defined in the Chemical Component Dictionary. The Link column lists molecule types, if any, to which the group is linked. The Z score for a bond length (or angle) is the number of standard deviations the observed value is removed from the expected value. A bond length (or angle) with $|Z| > 2$ is considered an outlier worth inspection. RMSZ is the root-mean-square of all Z scores of the bond lengths (or angles).

Mol	Type	Chain	Res	Link	Bond lengths			Bond angles		
					Counts	RMSZ	$\# Z > 2$	Counts	RMSZ	$\# Z > 2$
4	GOL	A	338	-	5,5,5	0.39	0	5,5,5	0.87	0
2	NAI	A	336	-	42,48,48	4.47	25 (59%)	47,73,73	3.27	21 (44%)
3	OXM	A	337	-	5,5,5	1.82	2 (40%)	4,6,6	2.51	2 (50%)

In the following table, the Chirals column lists the number of chiral outliers, the number of chiral centers analysed, the number of these observed in the model and the number defined in the

Chemical Component Dictionary. Similar counts are reported in the Torsion and Rings columns. '-' means no outliers of that kind were identified.

Mol	Type	Chain	Res	Link	Chirals	Torsions	Rings
4	GOL	A	338	-	-	0/4/4/4	-
2	NAI	A	336	-	-	4/25/72/72	0/5/5/5
3	OXM	A	337	-	-	0/3/4/4	-

All (27) bond length outliers are listed below:

Mol	Chain	Res	Type	Atoms	Z	Observed(Å)	Ideal(Å)
2	A	336	NAI	C2B-C1B	-10.47	1.37	1.53
2	A	336	NAI	C7N-C3N	8.73	1.67	1.48
2	A	336	NAI	C6N-C5N	8.61	1.48	1.33
2	A	336	NAI	C6N-N1N	7.95	1.57	1.37
2	A	336	NAI	C4N-C3N	7.38	1.64	1.49
2	A	336	NAI	O2B-C2B	-7.13	1.26	1.43
2	A	336	NAI	O7N-C7N	6.81	1.40	1.24
2	A	336	NAI	C1D-N1N	6.08	1.63	1.46
2	A	336	NAI	C3B-C4B	-5.96	1.37	1.53
2	A	336	NAI	O3B-C3B	-5.90	1.29	1.43
2	A	336	NAI	O5D-C5D	5.75	1.66	1.44
2	A	336	NAI	C2B-C3B	-5.33	1.38	1.53
2	A	336	NAI	C3D-C4D	5.22	1.66	1.53
2	A	336	NAI	C4N-C5N	4.92	1.61	1.48
2	A	336	NAI	C7N-N7N	-4.27	1.21	1.33
2	A	336	NAI	C5D-C4D	-3.86	1.39	1.51
2	A	336	NAI	O2D-C2D	-3.70	1.34	1.43
2	A	336	NAI	C2D-C3D	3.66	1.63	1.53
2	A	336	NAI	PN-O5D	-3.62	1.44	1.59
2	A	336	NAI	PN-O1N	-3.42	1.39	1.55
2	A	336	NAI	C2D-C1D	3.26	1.63	1.53
2	A	336	NAI	O4B-C1B	3.20	1.45	1.41
3	A	337	OXM	C1-C2	-2.98	1.51	1.55
2	A	336	NAI	PN-O2N	-2.76	1.41	1.50
2	A	336	NAI	PA-O2A	-2.63	1.43	1.55
2	A	336	NAI	C5A-C4A	2.25	1.46	1.40
3	A	337	OXM	O3-C2	-2.11	1.24	1.30

All (23) bond angle outliers are listed below:

Mol	Chain	Res	Type	Atoms	Z	Observed(°)	Ideal(°)
2	A	336	NAI	C3D-C2D-C1D	-8.00	86.23	101.43
2	A	336	NAI	O4D-C1D-N1N	-7.79	92.83	108.06

Continued on next page...

Continued from previous page...

Mol	Chain	Res	Type	Atoms	Z	Observed(°)	Ideal(°)
2	A	336	NAI	C1D-N1N-C2N	-7.29	108.97	121.11
2	A	336	NAI	O7N-C7N-C3N	-6.96	107.78	120.90
2	A	336	NAI	C2D-C1D-N1N	-5.65	99.15	113.30
2	A	336	NAI	C3N-C2N-N1N	-5.00	115.96	123.10
2	A	336	NAI	C5B-C4B-C3B	4.54	132.19	115.18
2	A	336	NAI	C1D-N1N-C6N	4.27	130.04	120.83
2	A	336	NAI	O3B-C3B-C4B	4.13	123.00	111.05
2	A	336	NAI	O7N-C7N-N7N	4.07	132.40	122.88
2	A	336	NAI	O4D-C1D-C2D	-4.06	97.80	106.64
3	A	337	OXM	O3-C2-C1	4.04	123.19	113.84
2	A	336	NAI	O2B-C2B-C1B	3.80	124.88	110.85
2	A	336	NAI	O5D-PN-O2N	3.59	123.09	109.07
2	A	336	NAI	O2A-PA-O1A	3.58	129.92	112.24
2	A	336	NAI	O4D-C4D-C3D	-3.26	98.67	105.11
2	A	336	NAI	O5D-C5D-C4D	3.12	119.73	108.99
2	A	336	NAI	N3A-C2A-N1A	-2.93	124.10	128.68
2	A	336	NAI	O4B-C4B-C3B	2.92	110.90	105.11
2	A	336	NAI	C3B-C2B-C1B	2.65	104.96	100.98
3	A	337	OXM	O2-C2-C1	-2.26	117.02	122.06
2	A	336	NAI	O4B-C1B-C2B	2.23	110.19	106.93
2	A	336	NAI	C2A-N1A-C6A	2.23	122.57	118.75

There are no chirality outliers.

All (4) torsion outliers are listed below:

Mol	Chain	Res	Type	Atoms
2	A	336	NAI	C2D-C1D-N1N-C2N
2	A	336	NAI	O4B-C4B-C5B-O5B
2	A	336	NAI	C2D-C1D-N1N-C6N
2	A	336	NAI	O4D-C1D-N1N-C2N

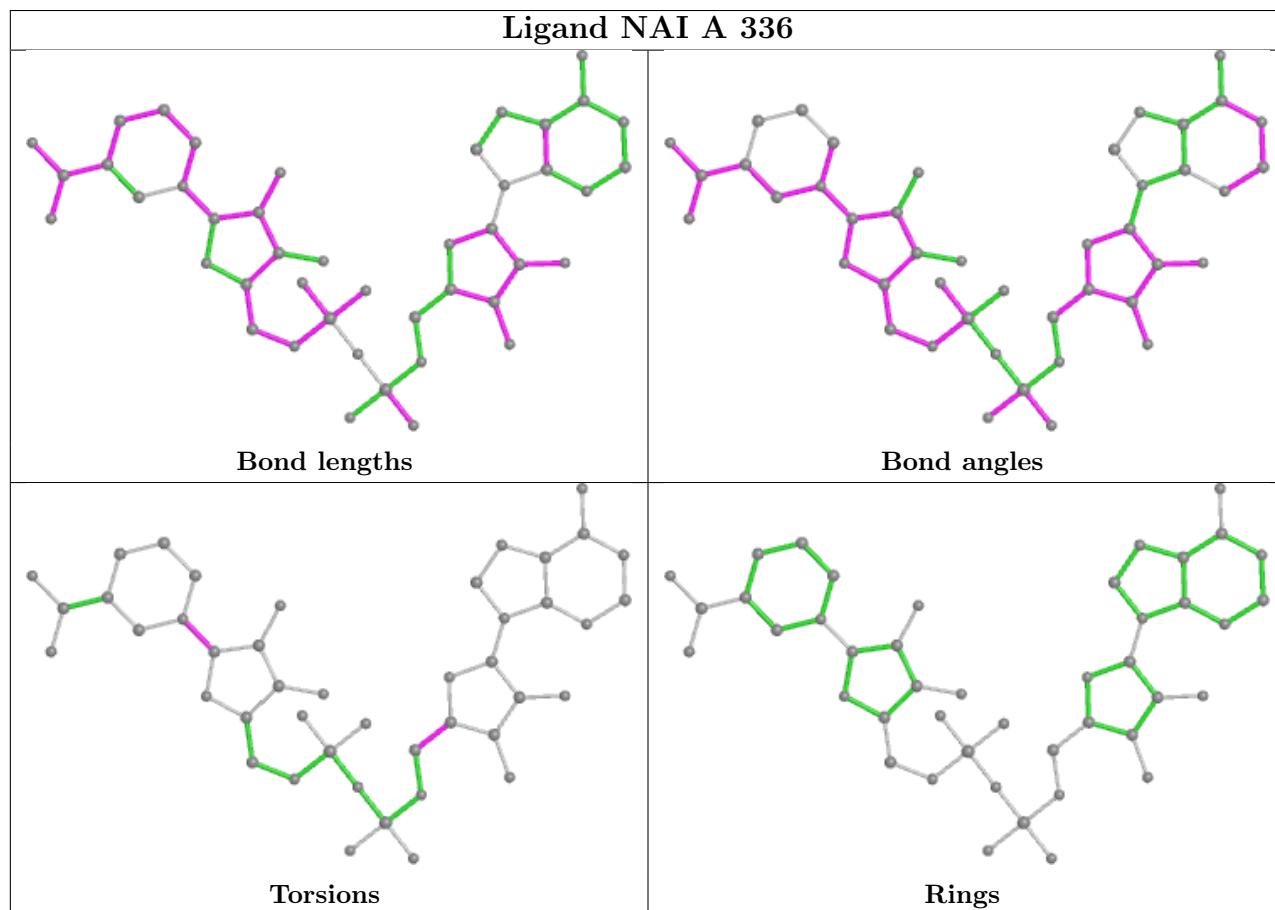
There are no ring outliers.

2 monomers are involved in 8 short contacts:

Mol	Chain	Res	Type	Clashes	Symm-Clashes
4	A	338	GOL	2	0
2	A	336	NAI	6	0

The following is a two-dimensional graphical depiction of Mogul quality analysis of bond lengths, bond angles, torsion angles, and ring geometry for all instances of the Ligand of Interest. In addition, ligands with molecular weight > 250 and outliers as shown on the validation Tables will

also be included. For torsion angles, if less than 5% of the Mogul distribution of torsion angles is within 10 degrees of the torsion angle in question, then that torsion angle is considered an outlier. Any bond that is central to one or more torsion angles identified as an outlier by Mogul will be highlighted in the graph. For rings, the root-mean-square deviation (RMSD) between the ring in question and similar rings identified by Mogul is calculated over all ring torsion angles. If the average RMSD is greater than 60 degrees and the minimal RMSD between the ring in question and any Mogul-identified rings is also greater than 60 degrees, then that ring is considered an outlier. The outliers are highlighted in purple. The color gray indicates Mogul did not find sufficient equivalents in the CSD to analyse the geometry.



5.7 Other polymers [\(i\)](#)

There are no such residues in this entry.

5.8 Polymer linkage issues [\(i\)](#)

The following chains have linkage breaks:

Mol	Chain	Number of breaks
1	A	2

All chain breaks are listed below:

Model	Chain	Residue-1	Atom-1	Residue-2	Atom-2	Distance (Å)
1	A	113:LEU	C	114:PRO	N	1.07
1	A	103(A):ALA	C	103(B):PRO	N	1.00

6 Fit of model and data [i](#)

6.1 Protein, DNA and RNA chains [i](#)

In the following table, the column labelled ‘#RSRZ> 2’ contains the number (and percentage) of RSRZ outliers, followed by percent RSRZ outliers for the chain as percentile scores relative to all X-ray entries and entries of similar resolution. The OWAB column contains the minimum, median, 95th percentile and maximum values of the occupancy-weighted average B-factor per residue. The column labelled ‘Q< 0.9’ lists the number of (and percentage) of residues with an average occupancy less than 0.9.

Mol	Chain	Analysed	<RSRZ>	#RSRZ>2	OWAB(Å ²)	Q<0.9
1	A	311/322 (96%)	-0.31	12 (3%) 39 38	7, 13, 32, 50	0

All (12) RSRZ outliers are listed below:

Mol	Chain	Res	Type	RSRZ
1	A	100	PHE	3.7
1	A	331	HIS	3.6
1	A	105(B)	LYS	3.4
1	A	19	PRO	3.0
1	A	103(D)	LYS	2.9
1	A	330	HIS	2.9
1	A	243	HIS	2.7
1	A	329	ALA	2.7
1	A	106	GLU	2.4
1	A	112	LEU	2.2
1	A	102	LYS	2.2
1	A	103(E)	SER	2.1

6.2 Non-standard residues in protein, DNA, RNA chains [i](#)

There are no non-standard protein/DNA/RNA residues in this entry.

6.3 Carbohydrates [i](#)

There are no monosaccharides in this entry.

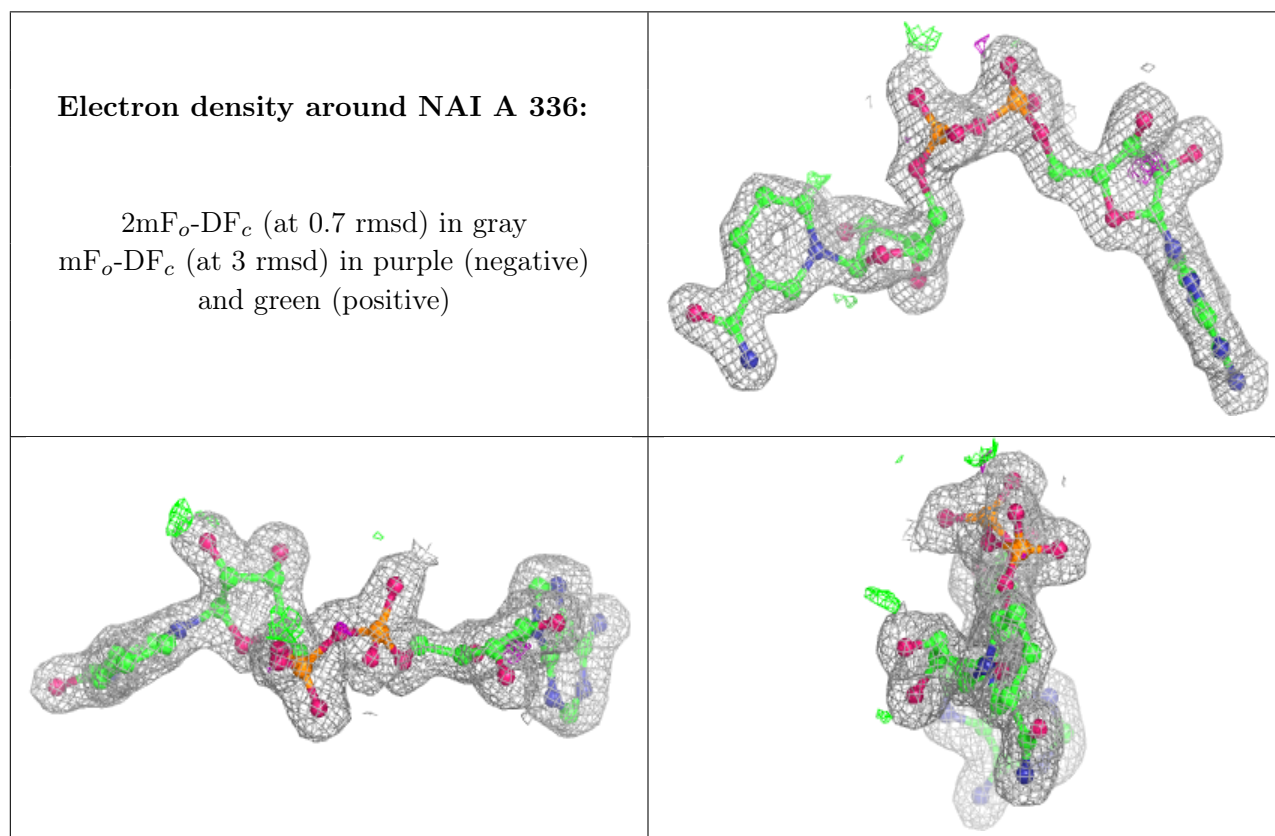
6.4 Ligands [i](#)

In the following table, the Atoms column lists the number of modelled atoms in the group and the number defined in the chemical component dictionary. The B-factors column lists the minimum,

median, 95th percentile and maximum values of B factors of atoms in the group. The column labelled 'Q < 0.9' lists the number of atoms with occupancy less than 0.9.

Mol	Type	Chain	Res	Atoms	RSCC	RSR	B-factors(Å ²)	Q<0.9
3	OXM	A	337	6/6	0.95	0.11	18,20,21,23	0
2	NAI	A	336	44/44	0.97	0.07	8,14,17,19	0
4	GOL	A	338	6/6	0.97	0.10	14,19,20,20	0

The following is a graphical depiction of the model fit to experimental electron density of all instances of the Ligand of Interest. In addition, ligands with molecular weight > 250 and outliers as shown on the geometry validation Tables will also be included. Each fit is shown from different orientation to approximate a three-dimensional view.



6.5 Other polymers [\(i\)](#)

There are no such residues in this entry.