



# Full wwPDB X-ray Structure Validation Report ⓘ

May 17, 2020 – 03:51 pm BST

PDB ID : 1RQ1  
Title : Structure of Ero1p, Source of Disulfide Bonds for Oxidative Protein Folding in the Cell  
Authors : Gross, E.; Kastner, D.B.; Kaiser, C.A.; Fass, D.  
Deposited on : 2003-12-04  
Resolution : 2.80 Å(reported)

This is a Full wwPDB X-ray Structure Validation Report for a publicly released PDB entry.

We welcome your comments at [validation@mail.wwpdb.org](mailto:validation@mail.wwpdb.org)

A user guide is available at

<https://www.wwpdb.org/validation/2017/XrayValidationReportHelp>

with specific help available everywhere you see the ⓘ symbol.

---

The following versions of software and data (see [references ⓘ](#)) were used in the production of this report:

MolProbity : 4.02b-467  
Mogul : 1.8.5 (274361), CSD as541be (2020)  
Xtriage (Phenix) : 1.13  
EDS : 2.11  
buster-report : 1.1.7 (2018)  
Percentile statistics : 20191225.v01 (using entries in the PDB archive December 25th 2019)  
Refmac : 5.8.0158  
CCP4 : 7.0.044 (Gargrove)  
Ideal geometry (proteins) : Engh & Huber (2001)  
Ideal geometry (DNA, RNA) : Parkinson et al. (1996)  
Validation Pipeline (wwPDB-VP) : 2.11

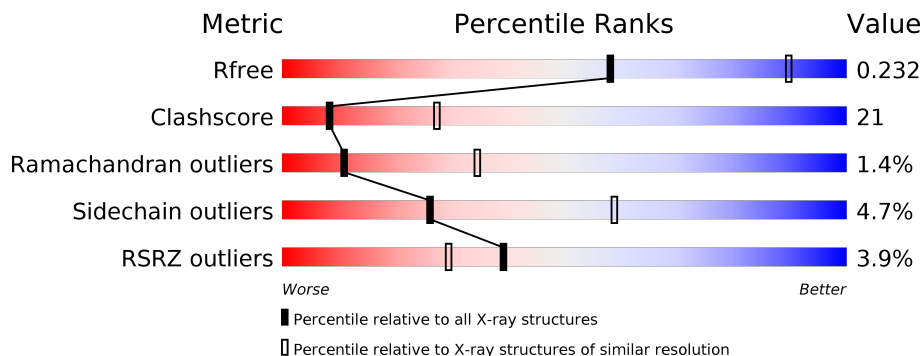
# 1 Overall quality at a glance i

The following experimental techniques were used to determine the structure:

*X-RAY DIFFRACTION*

The reported resolution of this entry is 2.80 Å.

Percentile scores (ranging between 0-100) for global validation metrics of the entry are shown in the following graphic. The table shows the number of entries on which the scores are based.



Metric	Whole archive (#Entries)	Similar resolution (#Entries, resolution range(Å))
$R_{free}$	130704	3140 (2.80-2.80)
Clashscore	141614	3569 (2.80-2.80)
Ramachandran outliers	138981	3498 (2.80-2.80)
Sidechain outliers	138945	3500 (2.80-2.80)
RSRZ outliers	127900	3078 (2.80-2.80)

The table below summarises the geometric issues observed across the polymeric chains and their fit to the electron density. The red, orange, yellow and green segments on the lower bar indicate the fraction of residues that contain outliers for  $\geq 3$ , 2, 1 and 0 types of geometric quality criteria respectively. A grey segment represents the fraction of residues that are not modelled. The numeric value for each fraction is indicated below the corresponding segment, with a dot representing fractions  $\leq 5\%$ . The upper red bar (where present) indicates the fraction of residues that have poor fit to the electron density. The numeric value is given above the bar.

Mol	Chain	Length	Quality of chain
1	A	386	

The following table lists non-polymeric compounds, carbohydrate monomers and non-standard residues in protein, DNA, RNA chains that are outliers for geometric or electron-density-fit criteria:

Mol	Type	Chain	Res	Chirality	Geometry	Clashes	Electron density
4	FAD	A	634	X	-	-	-

## 2 Entry composition [i](#)

There are 5 unique types of molecules in this entry. The entry contains 3015 atoms, of which 0 are hydrogens and 0 are deuteriums.

In the tables below, the ZeroOcc column contains the number of atoms modelled with zero occupancy, the AltConf column contains the number of residues with at least one atom in alternate conformation and the Trace column contains the number of residues modelled with at most 2 atoms.

- Molecule 1 is a protein called Hypothetical 65.0 kDa protein in COX14-COS3 intergenic region precursor.

Mol	Chain	Residues	Atoms					ZeroOcc	AltConf	Trace
			Total	C	N	O	S			
1	A	356	2894	1849	474	553	18	0	0	0

There are 17 discrepancies between the modelled and reference sequences:

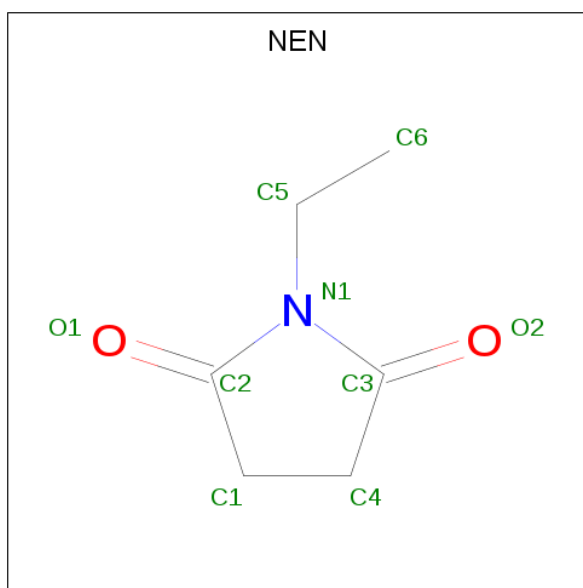
Chain	Residue	Modelled	Actual	Comment	Reference
A	39	GLY	-	CLONING ARTIFACT	UNP Q03103
A	40	SER	-	CLONING ARTIFACT	UNP Q03103
A	41	HIS	-	EXPRESSION TAG	UNP Q03103
A	42	HIS	-	EXPRESSION TAG	UNP Q03103
A	43	HIS	-	EXPRESSION TAG	UNP Q03103
A	44	HIS	-	EXPRESSION TAG	UNP Q03103
A	45	HIS	-	EXPRESSION TAG	UNP Q03103
A	46	HIS	-	EXPRESSION TAG	UNP Q03103
A	47	SER	-	CLONING ARTIFACT	UNP Q03103
A	48	SER	-	CLONING ARTIFACT	UNP Q03103
A	49	GLY	-	CLONING ARTIFACT	UNP Q03103
A	50	LEU	-	CLONING ARTIFACT	UNP Q03103
A	51	VAL	-	CLONING ARTIFACT	UNP Q03103
A	52	PRO	-	CLONING ARTIFACT	UNP Q03103
A	53	ARG	-	CLONING ARTIFACT	UNP Q03103
A	54	GLY	-	CLONING ARTIFACT	UNP Q03103
A	55	SER	-	CLONING ARTIFACT	UNP Q03103

- Molecule 2 is CADMIUM ION (three-letter code: CD) (formula: Cd).

Mol	Chain	Residues	Atoms		ZeroOcc	AltConf
2	A	2	Total	Cd	0	0
			2	2		

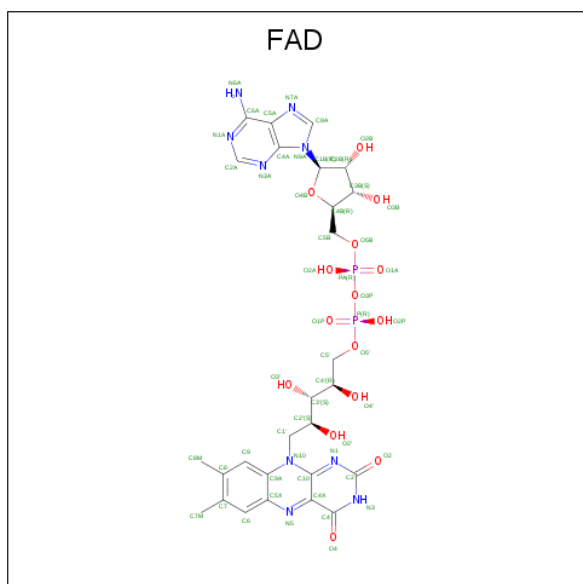
- Molecule 3 is 1-ETHYL-PYRROLIDINE-2,5-DIONE (three-letter code: NEN) (formula:

C<sub>6</sub>H<sub>9</sub>NO<sub>2</sub>).



Mol	Chain	Residues	Atoms				ZeroOcc	AltConf
			Total	C	N	O		
3	A	1	9	6	1	2	0	0

- Molecule 4 is FLAVIN-ADENINE DINUCLEOTIDE (three-letter code: FAD) (formula: C<sub>27</sub>H<sub>33</sub>N<sub>9</sub>O<sub>15</sub>P<sub>2</sub>).



Mol	Chain	Residues	Atoms					ZeroOcc	AltConf
			Total	C	N	O	P		
4	A	1	53	27	9	15	2	0	0

- Molecule 5 is water.

<b>Mol</b>	<b>Chain</b>	<b>Residues</b>	<b>Atoms</b>		<b>ZeroOcc</b>	<b>AltConf</b>
5	A	57	Total	O	0	0
			57	57		



## 4 Data and refinement statistics

Property	Value	Source
Space group	P 62	Depositor
Cell constants a, b, c, $\alpha$ , $\beta$ , $\gamma$	106.20Å 106.20Å 124.30Å 90.00° 90.00° 120.00°	Depositor
Resolution (Å)	50.00 – 2.80 36.97 – 2.80	Depositor EDS
% Data completeness (in resolution range)	(Not available) (50.00-2.80) 99.5 (36.97-2.80)	Depositor EDS
$R_{merge}$	(Not available)	Depositor
$R_{sym}$	0.06	Depositor
$\langle I/\sigma(I) \rangle$ <sup>1</sup>	4.73 (at 2.81Å)	Xtrriage
Refinement program	CNS 1.0	Depositor
R, $R_{free}$	0.206 , 0.238 0.201 , 0.232	Depositor DCC
$R_{free}$ test set	1342 reflections (6.88%)	wwPDB-VP
Wilson B-factor (Å <sup>2</sup> )	62.3	Xtrriage
Anisotropy	0.591	Xtrriage
Bulk solvent $k_{sol}$ (e/Å <sup>3</sup> ), $B_{sol}$ (Å <sup>2</sup> )	0.38 , 62.9	EDS
L-test for twinning <sup>2</sup>	$\langle  L  \rangle = 0.51$ , $\langle L^2 \rangle = 0.35$	Xtrriage
Estimated twinning fraction	0.046 for h,-h-k,-l	Xtrriage
$F_o, F_c$ correlation	0.95	EDS
Total number of atoms	3015	wwPDB-VP
Average B, all atoms (Å <sup>2</sup> )	67.0	wwPDB-VP

Xtrriage's analysis on translational NCS is as follows: *The largest off-origin peak in the Patterson function is 4.00% of the height of the origin peak. No significant pseudotranslation is detected.*

<sup>1</sup>Intensities estimated from amplitudes.

<sup>2</sup>Theoretical values of  $\langle |L| \rangle$ ,  $\langle L^2 \rangle$  for acentric reflections are 0.5, 0.333 respectively for untwinned datasets, and 0.375, 0.2 for perfectly twinned datasets.

## 5 Model quality [i](#)

### 5.1 Standard geometry [i](#)

Bond lengths and bond angles in the following residue types are not validated in this section: NEN, FAD, CD

The Z score for a bond length (or angle) is the number of standard deviations the observed value is removed from the expected value. A bond length (or angle) with  $|Z| > 5$  is considered an outlier worth inspection. RMSZ is the root-mean-square of all Z scores of the bond lengths (or angles).

Mol	Chain	Bond lengths		Bond angles	
		RMSZ	# Z  >5	RMSZ	# Z  >5
1	A	0.38	0/2953	0.60	0/3983

There are no bond length outliers.

There are no bond angle outliers.

There are no chirality outliers.

There are no planarity outliers.

### 5.2 Too-close contacts [i](#)

In the following table, the Non-H and H(model) columns list the number of non-hydrogen atoms and hydrogen atoms in the chain respectively. The H(added) column lists the number of hydrogen atoms added and optimized by MolProbity. The Clashes column lists the number of clashes within the asymmetric unit, whereas Symm-Clashes lists symmetry related clashes.

Mol	Chain	Non-H	H(model)	H(added)	Clashes	Symm-Clashes
1	A	2894	0	2800	121	0
2	A	2	0	0	0	0
3	A	9	0	8	0	0
4	A	53	0	29	2	1
5	A	57	0	0	6	0
All	All	3015	0	2837	121	1

The all-atom clashscore is defined as the number of clashes found per 1000 atoms (including hydrogen atoms). The all-atom clashscore for this structure is 21.

All (121) close contacts within the same asymmetric unit are listed below, sorted by their clash magnitude.



Atom-1	Atom-2	Interatomic distance (Å)	Clash overlap (Å)
1:A:302:ILE:HB	5:A:864:HOH:O	1.34	1.25
1:A:211:ILE:H	1:A:211:ILE:HD12	1.30	0.94
1:A:237:HIS:HE1	1:A:405:ARG:HH11	1.19	0.89
1:A:66:ILE:HG21	5:A:841:HOH:O	1.72	0.89
1:A:347:MET:HE1	4:A:634:FAD:HM73	1.56	0.87
1:A:237:HIS:CE1	1:A:405:ARG:HH11	1.96	0.83
1:A:60:ASN:O	1:A:64:GLU:HG2	1.85	0.76
1:A:211:ILE:H	1:A:211:ILE:CD1	2.01	0.73
1:A:293:SER:HB2	5:A:864:HOH:O	1.90	0.71
1:A:169:ASN:O	1:A:170:ASP:HB2	1.90	0.70
1:A:293:SER:CB	5:A:864:HOH:O	2.40	0.70
1:A:211:ILE:N	1:A:211:ILE:HD12	2.04	0.70
1:A:237:HIS:HE1	1:A:405:ARG:NH1	1.91	0.69
1:A:347:MET:CE	4:A:634:FAD:HM73	2.24	0.67
1:A:134:LYS:HE3	1:A:178:LEU:HD12	1.77	0.66
1:A:225:ARG:HH11	1:A:270:ASN:HD21	1.44	0.66
1:A:140:ASP:OD2	1:A:165:TYR:HD1	1.81	0.64
1:A:260:ARG:C	1:A:261:ILE:HD12	2.19	0.63
1:A:66:ILE:HD11	1:A:309:VAL:O	1.98	0.63
1:A:338:SER:O	1:A:342:ASN:HB2	1.99	0.63
1:A:112:ASP:O	1:A:115:THR:HB	2.01	0.61
1:A:107:VAL:HG13	1:A:122:PRO:HG2	1.84	0.60
1:A:149:LEU:HD12	1:A:292:PHE:HB2	1.85	0.59
1:A:414:ASN:HD22	1:A:414:ASN:N	1.99	0.59
1:A:165:TYR:HB3	1:A:169:ASN:ND2	2.18	0.59
1:A:194:LYS:HE2	1:A:198:GLN:NE2	2.17	0.59
1:A:225:ARG:HG3	1:A:270:ASN:ND2	2.18	0.59
1:A:258:MET:HA	1:A:262:GLY:HA3	1.86	0.58
1:A:347:MET:CE	1:A:359:GLY:HA3	2.34	0.58
1:A:340:PHE:O	1:A:342:ASN:N	2.38	0.57
1:A:207:ASN:OD1	1:A:220:LYS:HB2	2.05	0.57
1:A:261:ILE:N	1:A:261:ILE:HD12	2.21	0.56
1:A:218:LEU:HB3	1:A:324:PHE:CD1	2.41	0.56
1:A:89:GLN:HG3	1:A:89:GLN:O	2.05	0.56
1:A:347:MET:HE1	1:A:359:GLY:HA3	1.88	0.56
1:A:187:ARG:HD2	1:A:188:PHE:O	2.06	0.55
1:A:77:ASP:HA	1:A:80:LYS:HD2	1.87	0.55
1:A:111:GLU:OE1	1:A:245:THR:HG21	2.06	0.55
1:A:55:SER:HB2	1:A:317:ILE:HD11	1.88	0.55
1:A:86:LEU:HD12	1:A:175:ASN:ND2	2.20	0.55
1:A:209:PHE:HB2	1:A:216:GLU:OE1	2.07	0.55
1:A:86:LEU:HD11	1:A:133:MET:CE	2.37	0.55

*Continued on next page...*

*Continued from previous page...*

Atom-1	Atom-2	Interatomic distance (Å)	Clash overlap (Å)
1:A:116:LEU:HD21	1:A:245:THR:HB	1.88	0.54
1:A:323:VAL:HG12	1:A:323:VAL:O	2.09	0.53
1:A:134:LYS:HE3	1:A:178:LEU:CD1	2.38	0.52
1:A:285:ILE:HG21	1:A:372:ILE:HD13	1.92	0.52
1:A:329:SER:HB3	1:A:332:LEU:HB2	1.91	0.52
1:A:379:ALA:O	1:A:380:ASP:HB3	2.10	0.52
1:A:89:GLN:OE1	1:A:91:SER:HB3	2.10	0.51
1:A:148:GLN:NE2	1:A:165:TYR:CD2	2.79	0.51
1:A:375:GLU:HB3	1:A:387:ILE:HD13	1.94	0.50
1:A:185:PRO:HD2	1:A:354:ARG:NH2	2.26	0.50
1:A:330:LEU:O	1:A:330:LEU:HD23	2.12	0.50
1:A:335:GLU:HG2	1:A:339:ARG:HH12	1.77	0.49
1:A:107:VAL:CG1	1:A:122:PRO:HG2	2.41	0.49
1:A:194:LYS:O	1:A:198:GLN:HG3	2.12	0.49
1:A:342:ASN:HD22	1:A:345:LYS:HD2	1.76	0.49
1:A:393:LYS:O	1:A:397:ILE:HG13	2.12	0.49
1:A:87:TYR:HB2	1:A:174:LYS:HD2	1.93	0.49
1:A:207:ASN:ND2	1:A:223:PHE:HD2	2.11	0.49
1:A:421:GLY:C	1:A:423:ARG:H	2.16	0.49
1:A:294:PHE:O	1:A:300:LYS:HG2	2.13	0.48
1:A:87:TYR:CB	1:A:174:LYS:HD2	2.43	0.48
1:A:296:ASP:O	1:A:300:LYS:HG3	2.14	0.48
1:A:135:GLU:CD	1:A:135:GLU:H	2.17	0.48
1:A:148:GLN:NE2	1:A:165:TYR:CE2	2.82	0.47
1:A:107:VAL:CG1	1:A:113:TRP:NE1	2.78	0.47
1:A:86:LEU:HD12	1:A:175:ASN:HD21	1.80	0.47
1:A:237:HIS:ND1	5:A:828:HOH:O	2.35	0.47
1:A:86:LEU:HB2	1:A:175:ASN:HD22	1.79	0.47
1:A:329:SER:O	1:A:333:LYS:HG3	2.15	0.47
1:A:66:ILE:HD13	1:A:309:VAL:HG13	1.96	0.47
1:A:86:LEU:HD11	1:A:133:MET:HE1	1.96	0.47
1:A:187:ARG:HD3	1:A:250:TRP:CZ3	2.50	0.47
1:A:146:LEU:HG	1:A:391:LEU:O	2.15	0.46
1:A:286:GLN:HB3	1:A:287:PRO:HD3	1.97	0.46
1:A:116:LEU:HB3	1:A:117:PRO:HD2	1.97	0.46
1:A:195:GLN:HE22	1:A:351:GLN:HB2	1.81	0.46
1:A:374:PHE:O	1:A:377:ASN:HB3	2.16	0.46
1:A:348:ASP:OD1	1:A:360:LYS:NZ	2.48	0.46
1:A:214:THR:O	1:A:332:LEU:HD12	2.15	0.46
1:A:372:ILE:HG23	1:A:376:ILE:HD12	1.98	0.46
1:A:421:GLY:C	1:A:423:ARG:N	2.70	0.45

*Continued on next page...*

*Continued from previous page...*

Atom-1	Atom-2	Interatomic distance (Å)	Clash overlap (Å)
1:A:103:ARG:O	1:A:107:VAL:HG23	2.16	0.45
1:A:305:LYS:NZ	5:A:844:HOH:O	2.40	0.45
1:A:80:LYS:HG2	1:A:81:TYR:CD1	2.52	0.45
1:A:323:VAL:HG11	1:A:370:LEU:CD2	2.48	0.44
1:A:421:GLY:O	1:A:423:ARG:N	2.50	0.44
1:A:209:PHE:HA	1:A:335:GLU:OE2	2.17	0.44
1:A:414:ASN:ND2	1:A:414:ASN:N	2.65	0.43
1:A:141:ASP:HA	1:A:144:LYS:HE2	2.00	0.43
1:A:260:ARG:CB	1:A:261:ILE:HD12	2.48	0.43
1:A:393:LYS:HE2	1:A:397:ILE:HD11	2.00	0.43
1:A:136:ALA:C	1:A:138:ASP:H	2.22	0.43
1:A:110:VAL:HG12	1:A:242:TYR:OH	2.17	0.43
1:A:203:ILE:HG12	1:A:346:ILE:HD12	2.01	0.42
1:A:339:ARG:O	1:A:342:ASN:HB3	2.19	0.42
1:A:110:VAL:CG1	1:A:242:TYR:OH	2.68	0.42
1:A:211:ILE:HG22	1:A:212:GLY:N	2.33	0.42
1:A:286:GLN:NE2	1:A:307:ASP:HA	2.35	0.42
1:A:362:GLN:HA	1:A:402:THR:OG1	2.20	0.42
1:A:216:GLU:OE1	1:A:216:GLU:HA	2.20	0.42
1:A:347:MET:HE3	1:A:350:VAL:HG21	2.00	0.42
1:A:92:PHE:CD1	1:A:92:PHE:N	2.87	0.42
1:A:286:GLN:HB2	1:A:310:ILE:HG21	2.00	0.42
1:A:124:ILE:HD12	1:A:124:ILE:N	2.35	0.42
1:A:145:PHE:HB2	1:A:148:GLN:HG2	2.02	0.41
1:A:247:THR:OG1	1:A:249:LYS:HB2	2.19	0.41
1:A:386:HIS:CE1	1:A:390:LYS:HD2	2.56	0.41
1:A:225:ARG:HG2	1:A:273:PHE:CD2	2.54	0.41
1:A:287:PRO:HB2	1:A:288:TYR:CE1	2.56	0.41
1:A:74:LEU:HD11	1:A:404:GLY:HA3	2.03	0.41
1:A:76:SER:HB2	1:A:302:ILE:HD11	2.02	0.41
1:A:237:HIS:CE1	1:A:405:ARG:NH1	2.72	0.41
1:A:347:MET:HE2	1:A:359:GLY:HA3	2.03	0.41
1:A:225:ARG:HH11	1:A:270:ASN:ND2	2.17	0.40
1:A:225:ARG:NH1	1:A:270:ASN:HD21	2.17	0.40
1:A:79:PHE:HZ	1:A:306:MET:CE	2.35	0.40
1:A:107:VAL:HG12	1:A:108:ASP:N	2.36	0.40
1:A:218:LEU:HD22	1:A:324:PHE:CZ	2.56	0.40
1:A:207:ASN:HD22	1:A:223:PHE:HD2	1.70	0.40

All (1) symmetry-related close contacts are listed below. The label for Atom-2 includes the symmetry operator and encoded unit-cell translations to be applied.

Atom-1	Atom-2	Interatomic distance (Å)	Clash overlap (Å)
4:A:634:FAD:O2B	4:A:634:FAD:O2B[4_765]	2.14	0.06

### 5.3 Torsion angles [i](#)

#### 5.3.1 Protein backbone [i](#)

In the following table, the Percentiles column shows the percent Ramachandran outliers of the chain as a percentile score with respect to all X-ray entries followed by that with respect to entries of similar resolution.

The Analysed column shows the number of residues for which the backbone conformation was analysed, and the total number of residues.

Mol	Chain	Analysed	Favoured	Allowed	Outliers	Percentiles
1	A	348/386 (90%)	325 (93%)	18 (5%)	5 (1%)	11 34

All (5) Ramachandran outliers are listed below:

Mol	Chain	Res	Type
1	A	130	ASN
1	A	137	ASP
1	A	422	LYS
1	A	131	ASP
1	A	380	ASP

#### 5.3.2 Protein sidechains [i](#)

In the following table, the Percentiles column shows the percent sidechain outliers of the chain as a percentile score with respect to all X-ray entries followed by that with respect to entries of similar resolution.

The Analysed column shows the number of residues for which the sidechain conformation was analysed, and the total number of residues.

Mol	Chain	Analysed	Rotameric	Outliers	Percentiles
1	A	319/345 (92%)	304 (95%)	15 (5%)	26 59

All (15) residues with a non-rotameric sidechain are listed below:

Mol	Chain	Res	Type
1	A	66	ILE

*Continued on next page...*

*Continued from previous page...*

Mol	Chain	Res	Type
1	A	89	GLN
1	A	100	CYS
1	A	103	ARG
1	A	109	VAL
1	A	142	GLU
1	A	147	ASP
1	A	187	ARG
1	A	205	GLN
1	A	289	LEU
1	A	336	PHE
1	A	342	ASN
1	A	346	ILE
1	A	352	CYS
1	A	408	GLU

Some sidechains can be flipped to improve hydrogen bonding and reduce clashes. All (10) such sidechains are listed below:

Mol	Chain	Res	Type
1	A	129	ASN
1	A	175	ASN
1	A	195	GLN
1	A	205	GLN
1	A	237	HIS
1	A	270	ASN
1	A	342	ASN
1	A	377	ASN
1	A	386	HIS
1	A	414	ASN

### 5.3.3 RNA [i](#)

There are no RNA molecules in this entry.

### 5.4 Non-standard residues in protein, DNA, RNA chains [i](#)

There are no non-standard protein/DNA/RNA residues in this entry.

### 5.5 Carbohydrates [i](#)

There are no carbohydrates in this entry.

## 5.6 Ligand geometry

Of 4 ligands modelled in this entry, 2 are monoatomic - leaving 2 for Mogul analysis.

In the following table, the Counts columns list the number of bonds (or angles) for which Mogul statistics could be retrieved, the number of bonds (or angles) that are observed in the model and the number of bonds (or angles) that are defined in the Chemical Component Dictionary. The Link column lists molecule types, if any, to which the group is linked. The Z score for a bond length (or angle) is the number of standard deviations the observed value is removed from the expected value. A bond length (or angle) with  $|Z| > 2$  is considered an outlier worth inspection. RMSZ is the root-mean-square of all Z scores of the bond lengths (or angles).

Mol	Type	Chain	Res	Link	Bond lengths			Bond angles		
					Counts	RMSZ	# Z  > 2	Counts	RMSZ	# Z  > 2
3	NEN	A	501	1	9,9,9	0.58	0	12,12,12	1.06	1 (8%)
4	FAD	A	634	-	51,58,58	2.72	15 (29%)	60,89,89	4.40	39 (65%)

In the following table, the Chirals column lists the number of chiral outliers, the number of chiral centers analysed, the number of these observed in the model and the number defined in the Chemical Component Dictionary. Similar counts are reported in the Torsion and Rings columns. '-' means no outliers of that kind were identified.

Mol	Type	Chain	Res	Link	Chirals	Torsions	Rings
3	NEN	A	501	1	-	0/2/15/15	0/1/1/1
4	FAD	A	634	-	2/2/9/9	15/30/50/50	0/6/6/6

All (15) bond length outliers are listed below:

Mol	Chain	Res	Type	Atoms	Z	Observed(Å)	Ideal(Å)
4	A	634	FAD	C9A-N10	8.17	1.49	1.38
4	A	634	FAD	C4X-N5	7.47	1.44	1.33
4	A	634	FAD	C2A-N3A	5.79	1.41	1.32
4	A	634	FAD	C4-N3	5.53	1.42	1.33
4	A	634	FAD	C4X-C10	5.08	1.43	1.38
4	A	634	FAD	C4A-N3A	4.85	1.42	1.35
4	A	634	FAD	C1'-N10	-4.65	1.43	1.48
4	A	634	FAD	C10-N1	4.48	1.39	1.33
4	A	634	FAD	C5X-N5	4.28	1.42	1.35
4	A	634	FAD	C5A-C4A	-3.55	1.31	1.40
4	A	634	FAD	C5'-C4'	-3.53	1.46	1.51
4	A	634	FAD	C9A-C5X	3.05	1.48	1.42
4	A	634	FAD	C2B-C3B	-2.71	1.45	1.53
4	A	634	FAD	C6-C7	2.12	1.43	1.37
4	A	634	FAD	O4B-C1B	2.01	1.43	1.41

All (40) bond angle outliers are listed below:

Mol	Chain	Res	Type	Atoms	Z	Observed(°)	Ideal(°)
4	A	634	FAD	C4-N3-C2	14.71	127.56	115.14
4	A	634	FAD	C4X-N5-C5X	10.68	127.44	116.77
4	A	634	FAD	C5X-C9A-N10	-10.20	110.32	117.72
4	A	634	FAD	O5'-C5'-C4'	-9.48	84.06	109.36
4	A	634	FAD	N3A-C2A-N1A	-8.58	115.27	128.68
4	A	634	FAD	C4-C4X-N5	7.92	127.65	118.60
4	A	634	FAD	C10-C4X-N5	-7.21	116.27	121.26
4	A	634	FAD	O4'-C4'-C3'	7.11	126.39	109.10
4	A	634	FAD	C9A-N10-C10	6.75	130.75	121.91
4	A	634	FAD	C4-C4X-C10	-5.87	116.06	119.95
4	A	634	FAD	P-O3P-PA	5.38	151.28	132.83
4	A	634	FAD	O3'-C3'-C2'	5.25	121.50	108.81
4	A	634	FAD	C3B-C2B-C1B	4.83	108.25	100.98
4	A	634	FAD	C1'-N10-C10	-4.57	114.32	118.41
4	A	634	FAD	C1'-N10-C9A	-4.33	114.89	118.29
4	A	634	FAD	C4X-C10-N10	-3.95	116.24	120.30
4	A	634	FAD	O2A-PA-O1A	3.76	130.85	112.24
4	A	634	FAD	C5B-C4B-C3B	3.56	128.54	115.18
4	A	634	FAD	C5'-C4'-C3'	3.12	118.23	112.20
4	A	634	FAD	C8M-C8-C7	2.99	126.87	120.74
4	A	634	FAD	O4'-C4'-C5'	-2.83	103.55	109.92
4	A	634	FAD	C9-C8-C7	-2.82	115.17	119.91
4	A	634	FAD	C9A-C5X-N5	-2.71	118.13	122.36
4	A	634	FAD	O3'-C3'-C4'	2.68	115.28	108.81
4	A	634	FAD	C5A-C6A-N6A	-2.67	116.30	120.35
4	A	634	FAD	C4'-C3'-C2'	2.66	118.90	113.36
4	A	634	FAD	O2A-PA-O5B	2.52	119.47	107.75
4	A	634	FAD	C4X-C4-N3	-2.51	119.99	123.43
4	A	634	FAD	C9-C9A-C5X	-2.45	115.69	119.88
4	A	634	FAD	C6-C5X-N5	2.41	121.71	119.05
4	A	634	FAD	C5A-C6A-N1A	2.39	125.78	120.35
4	A	634	FAD	O2B-C2B-C3B	-2.32	104.30	111.82
4	A	634	FAD	O3B-C3B-C4B	-2.27	104.47	111.05
4	A	634	FAD	C6-C7-C8	2.27	123.74	119.91
4	A	634	FAD	C7M-C7-C6	-2.27	114.92	120.34
4	A	634	FAD	O2'-C2'-C3'	2.27	114.61	109.10
4	A	634	FAD	O5B-PA-O1A	-2.26	100.23	109.07
4	A	634	FAD	C8-C9-C9A	2.14	125.82	119.19
4	A	634	FAD	O2'-C2'-C1'	2.13	114.72	109.59
3	A	501	NEN	C1-C4-C3	-2.07	102.98	105.23

All (2) chirality outliers are listed below:

Mol	Chain	Res	Type	Atom
4	A	634	FAD	C4'
4	A	634	FAD	C3'

All (15) torsion outliers are listed below:

Mol	Chain	Res	Type	Atoms
4	A	634	FAD	C5B-O5B-PA-O2A
4	A	634	FAD	C5B-O5B-PA-O3P
4	A	634	FAD	O4B-C4B-C5B-O5B
4	A	634	FAD	C1'-C2'-C3'-O3'
4	A	634	FAD	C1'-C2'-C3'-C4'
4	A	634	FAD	O2'-C2'-C3'-C4'
4	A	634	FAD	C3'-C4'-C5'-O5'
4	A	634	FAD	O4'-C4'-C5'-O5'
4	A	634	FAD	C5'-O5'-P-O1P
4	A	634	FAD	C5'-O5'-P-O2P
4	A	634	FAD	C2'-C3'-C4'-O4'
4	A	634	FAD	C3B-C4B-C5B-O5B
4	A	634	FAD	PA-O3P-P-O5'
4	A	634	FAD	O2'-C2'-C3'-O3'
4	A	634	FAD	C5'-O5'-P-O3P

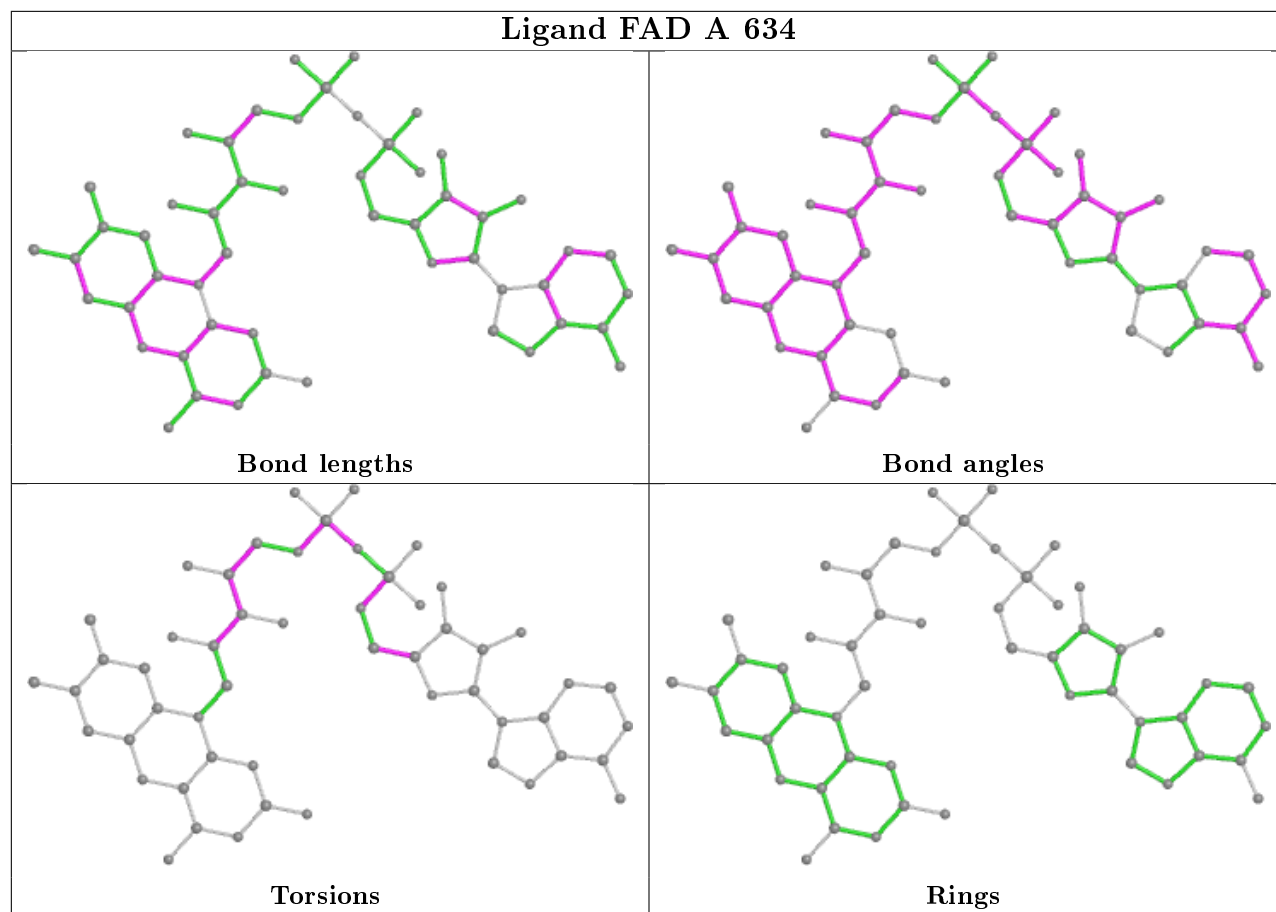
There are no ring outliers.

1 monomer is involved in 3 short contacts:

Mol	Chain	Res	Type	Clashes	Symm-Clashes
4	A	634	FAD	2	1

The following is a two-dimensional graphical depiction of Mogul quality analysis of bond lengths, bond angles, torsion angles, and ring geometry for all instances of the Ligand of Interest. In addition, ligands with molecular weight > 250 and outliers as shown on the validation Tables will also be included. For torsion angles, if less than 5% of the Mogul distribution of torsion angles is within 10 degrees of the torsion angle in question, then that torsion angle is considered an outlier. Any bond that is central to one or more torsion angles identified as an outlier by Mogul will be highlighted in the graph. For rings, the root-mean-square deviation (RMSD) between the ring in question and similar rings identified by Mogul is calculated over all ring torsion angles. If the average RMSD is greater than 60 degrees and the minimal RMSD between the ring in question and any Mogul-identified rings is also greater than 60 degrees, then that ring is considered an outlier. The outliers are highlighted in purple. The color gray indicates Mogul did not find sufficient equivalents in the CSD to analyse the geometry.





## 5.7 Other polymers [i](#)

There are no such residues in this entry.

## 5.8 Polymer linkage issues [i](#)

There are no chain breaks in this entry.

## 6 Fit of model and data [i](#)

### 6.1 Protein, DNA and RNA chains [i](#)

In the following table, the column labelled ‘#RSRZ> 2’ contains the number (and percentage) of RSRZ outliers, followed by percent RSRZ outliers for the chain as percentile scores relative to all X-ray entries and entries of similar resolution. The OWAB column contains the minimum, median, 95<sup>th</sup> percentile and maximum values of the occupancy-weighted average B-factor per residue. The column labelled ‘Q< 0.9’ lists the number of (and percentage) of residues with an average occupancy less than 0.9.

Mol	Chain	Analysed	<RSRZ>	#RSRZ>2	OWAB(Å <sup>2</sup> )	Q<0.9
1	A	356/386 (92%)	0.08	14 (3%) 39 29	40, 64, 103, 115	0

All (14) RSRZ outliers are listed below:

Mol	Chain	Res	Type	RSRZ
1	A	214	THR	4.3
1	A	140	ASP	3.3
1	A	154	LYS	3.1
1	A	211	ILE	3.0
1	A	297	LEU	2.9
1	A	155	LYS	2.8
1	A	249	LYS	2.7
1	A	93	TRP	2.7
1	A	165	TYR	2.5
1	A	248	GLY	2.4
1	A	246	LYS	2.2
1	A	422	LYS	2.2
1	A	247	THR	2.1
1	A	316	LYS	2.0

### 6.2 Non-standard residues in protein, DNA, RNA chains [i](#)

There are no non-standard protein/DNA/RNA residues in this entry.

### 6.3 Carbohydrates [i](#)

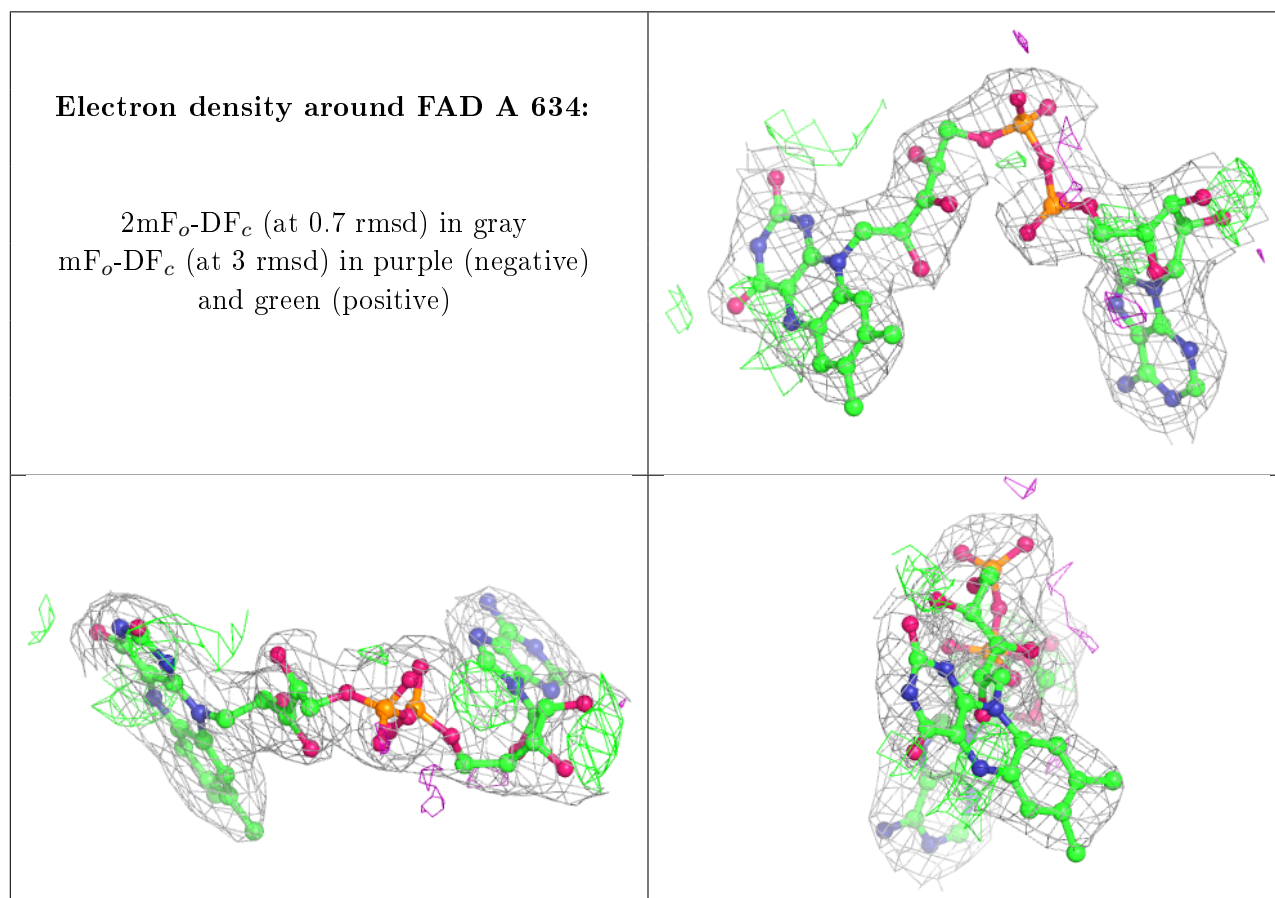
There are no carbohydrates in this entry.

## 6.4 Ligands [i](#)

In the following table, the Atoms column lists the number of modelled atoms in the group and the number defined in the chemical component dictionary. The B-factors column lists the minimum, median, 95<sup>th</sup> percentile and maximum values of B factors of atoms in the group. The column labelled 'Q< 0.9' lists the number of atoms with occupancy less than 0.9.

Mol	Type	Chain	Res	Atoms	RSCC	RSR	B-factors(Å <sup>2</sup> )	Q<0.9
3	NEN	A	501	9/9	0.81	0.53	122,124,126,126	0
2	CD	A	814	1/1	0.92	0.04	159,159,159,159	0
4	FAD	A	634	53/53	0.97	0.18	38,49,58,62	0
2	CD	A	813	1/1	0.99	0.14	86,86,86,86	0

The following is a graphical depiction of the model fit to experimental electron density of all instances of the Ligand of Interest. In addition, ligands with molecular weight > 250 and outliers as shown on the geometry validation Tables will also be included. Each fit is shown from different orientation to approximate a three-dimensional view.



## 6.5 Other polymers [i](#)

There are no such residues in this entry.