



Full wwPDB X-ray Structure Validation Report ⓘ

May 29, 2020 – 10:40 am BST

PDB ID : 1QJ3
Title : Crystal structure of 7,8-diaminopelargonic acid synthase in complex with 7-keto-8-aminopelargonic acid
Authors : Kaeck, H.; Sandmark, J.; Gibson, K.J.; Lindqvist, Y.; Schneider, G.
Deposited on : 1999-06-21
Resolution : 2.70 Å(reported)

This is a Full wwPDB X-ray Structure Validation Report for a publicly released PDB entry.

We welcome your comments at validation@mail.wwpdb.org

A user guide is available at

<https://www.wwpdb.org/validation/2017/XrayValidationReportHelp>

with specific help available everywhere you see the ⓘ symbol.

The following versions of software and data (see [references ⓘ](#)) were used in the production of this report:

MolProbity : 4.02b-467
Mogul : 1.8.5 (274361), CSD as541be (2020)
Xtrriage (Phenix) : **NOT EXECUTED**
EDS : **NOT EXECUTED**
Percentile statistics : 20191225.v01 (using entries in the PDB archive December 25th 2019)
Ideal geometry (proteins) : Engh & Huber (2001)
Ideal geometry (DNA, RNA) : Parkinson et al. (1996)
Validation Pipeline (wwPDB-VP) : 2.11

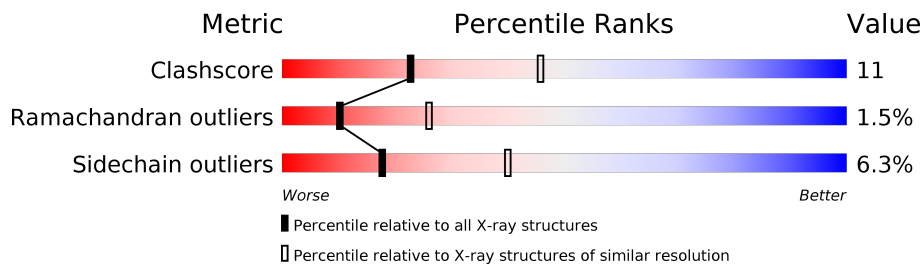
1 Overall quality at a glance

The following experimental techniques were used to determine the structure:

X-RAY DIFFRACTION

The reported resolution of this entry is 2.70 Å.

Percentile scores (ranging between 0-100) for global validation metrics of the entry are shown in the following graphic. The table shows the number of entries on which the scores are based.



Metric	Whole archive (#Entries)	Similar resolution (#Entries, resolution range(Å))
Clashscore	141614	3122 (2.70-2.70)
Ramachandran outliers	138981	3069 (2.70-2.70)
Sidechain outliers	138945	3069 (2.70-2.70)

The table below summarises the geometric issues observed across the polymeric chains and their fit to the electron density. The red, orange, yellow and green segments on the lower bar indicate the fraction of residues that contain outliers for ≥ 3 , 2, 1 and 0 types of geometric quality criteria respectively. A grey segment represents the fraction of residues that are not modelled. The numeric value for each fraction is indicated below the corresponding segment, with a dot representing fractions $\leq 5\%$.

Note EDS was not executed.

Mol	Chain	Length	Quality of chain
1	A	429	
1	B	429	

2 Entry composition [i](#)

There are 5 unique types of molecules in this entry. The entry contains 6550 atoms, of which 0 are hydrogens and 0 are deuteriums.

In the tables below, the ZeroOcc column contains the number of atoms modelled with zero occupancy, the AltConf column contains the number of residues with at least one atom in alternate conformation and the Trace column contains the number of residues modelled with at most 2 atoms.

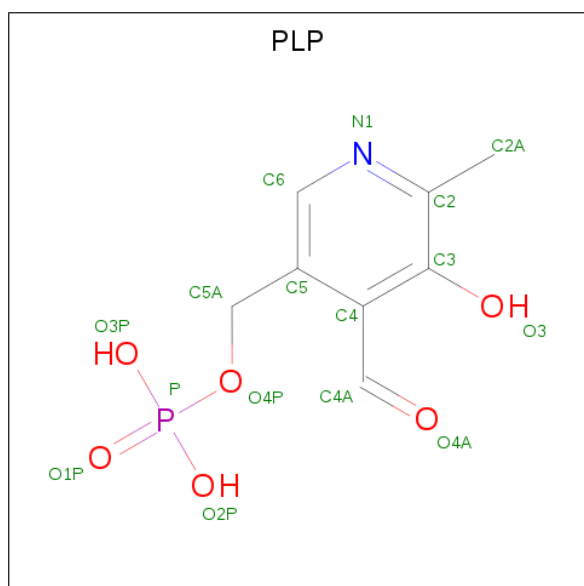
- Molecule 1 is a protein called 7,8-DIAMINOPELARGONIC ACID SYNTHASE.

Mol	Chain	Residues	Atoms					ZeroOcc	AltConf	Trace
			Total	C	N	O	S			
1	A	416	Total 3201	C 2030	N 558	O 582	S 31	0	0	0
1	B	415	Total 3197	C 2028	N 557	O 581	S 31	4	0	0

There are 2 discrepancies between the modelled and reference sequences:

Chain	Residue	Modelled	Actual	Comment	Reference
A	14	LEU	TRP	conflict	UNP P12995
B	14	LEU	TRP	conflict	UNP P12995

- Molecule 2 is PYRIDOXAL-5'-PHOSPHATE (three-letter code: PLP) (formula: C₈H₁₀NO₆P).



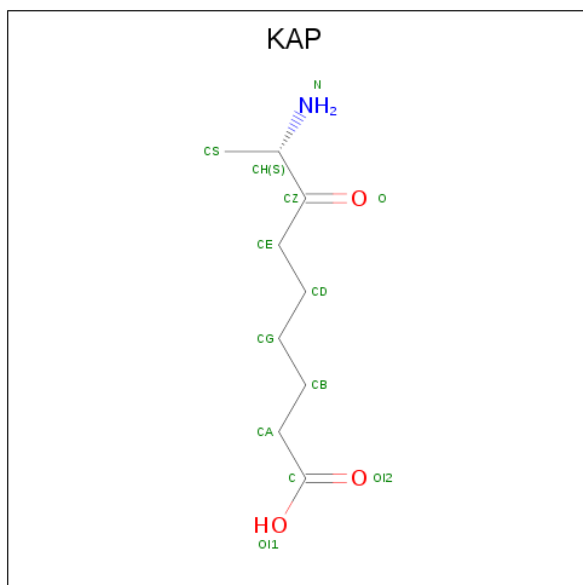
Mol	Chain	Residues	Atoms					ZeroOcc	AltConf
			Total	C	N	O	P		
2	A	1	Total 15	C 8	N 1	O 5	P 1	0	0

Continued on next page...

Continued from previous page...

Mol	Chain	Residues	Atoms					ZeroOcc	AltConf
			Total	C	N	O	P		
2	B	1	15	8	1	5	1	0	0

- Molecule 3 is 7-KETO-8-AMINOPELARGONIC ACID (three-letter code: KAP) (formula: C₉H₁₇NO₃).



Mol	Chain	Residues	Atoms				ZeroOcc	AltConf
			Total	C	N	O		
3	A	1	13	9	1	3	0	0
3	B	1	13	9	1	3	0	0

- Molecule 4 is SODIUM ION (three-letter code: NA) (formula: Na).

Mol	Chain	Residues	Atoms		ZeroOcc	AltConf
			Total	Na		
4	B	1	1	1	0	0
4	A	1	1	1	0	0

- Molecule 5 is water.

Mol	Chain	Residues	Atoms		ZeroOcc	AltConf
			Total	O		
5	A	55	55	55	0	0

Continued on next page...

Continued from previous page...

Mol	Chain	Residues	Atoms		ZeroOcc	AltConf
5	B	39	Total	O	0	0
			39	39		

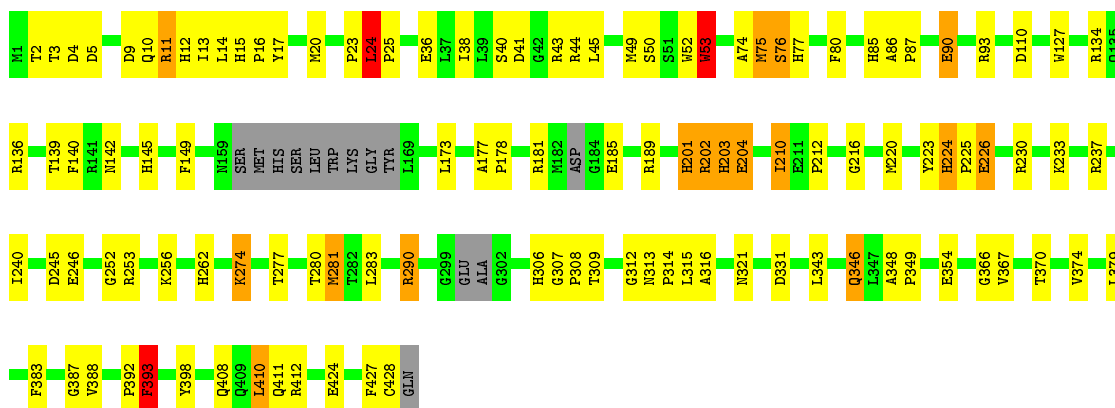
3 Residue-property plots

These plots are drawn for all protein, RNA and DNA chains in the entry. The first graphic for a chain summarises the proportions of the various outlier classes displayed in the second graphic. The second graphic shows the sequence view annotated by issues in geometry. Residues are color-coded according to the number of geometric quality criteria for which they contain at least one outlier: green = 0, yellow = 1, orange = 2 and red = 3 or more. Stretches of 2 or more consecutive residues without any outlier are shown as a green connector. Residues present in the sample, but not in the model, are shown in grey.

Note EDS was not executed.

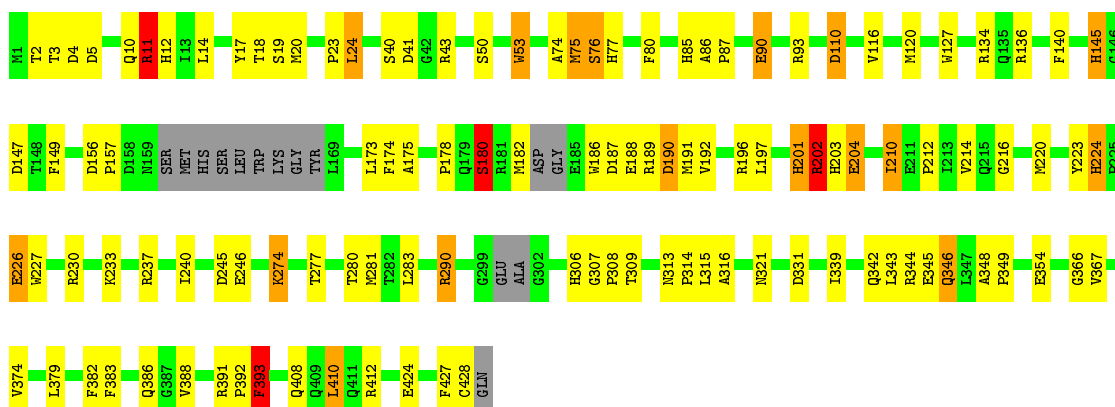
- Molecule 1: 7,8-DIAMINOPELARGONIC ACID SYNTHASE

Chain A: 



- Molecule 1: 7,8-DIAMINOPELARGONIC ACID SYNTHASE

Chain B: 



4 Data and refinement statistics

Xtrriage (Phenix) and EDS were not executed - this section is therefore incomplete.

Property	Value	Source
Space group	P 1 21 1	Depositor
Cell constants a, b, c, α , β , γ	57.97Å 55.94Å 120.84Å 90.00° 95.69° 90.00°	Depositor
Resolution (Å)	20.00 – 2.70	Depositor
% Data completeness (in resolution range)	99.9 (20.00-2.70)	Depositor
R_{merge}	(Not available)	Depositor
R_{sym}	0.10	Depositor
Refinement program	REFMAC	Depositor
R, R_{free}	0.225 , 0.279	Depositor
Estimated twinning fraction	No twinning to report.	Xtrriage
Total number of atoms	6550	wwPDB-VP
Average B, all atoms (Å ²)	51.0	wwPDB-VP

5 Model quality [i](#)

5.1 Standard geometry [i](#)

Bond lengths and bond angles in the following residue types are not validated in this section: NA, KAP, PLP

The Z score for a bond length (or angle) is the number of standard deviations the observed value is removed from the expected value. A bond length (or angle) with $|Z| > 5$ is considered an outlier worth inspection. RMSZ is the root-mean-square of all Z scores of the bond lengths (or angles).

Mol	Chain	Bond lengths		Bond angles	
		RMSZ	# Z >5	RMSZ	# Z >5
1	A	0.49	0/3272	1.42	32/4438 (0.7%)
1	B	0.49	0/3268	1.40	29/4433 (0.7%)
All	All	0.49	0/6540	1.41	61/8871 (0.7%)

Chiral center outliers are detected by calculating the chiral volume of a chiral center and verifying if the center is modelled as a planar moiety or with the opposite hand. A planarity outlier is detected by checking planarity of atoms in a peptide group, atoms in a mainchain group or atoms of a sidechain that are expected to be planar.

Mol	Chain	#Chirality outliers	#Planarity outliers
1	A	0	1

There are no bond length outliers.

All (61) bond angle outliers are listed below:

Mol	Chain	Res	Type	Atoms	Z	Observed($^{\circ}$)	Ideal($^{\circ}$)
1	A	11	ARG	NE-CZ-NH2	30.34	135.47	120.30
1	B	11	ARG	NE-CZ-NH2	28.36	134.48	120.30
1	B	11	ARG	NE-CZ-NH1	-15.37	112.61	120.30
1	A	11	ARG	NE-CZ-NH1	-13.81	113.39	120.30
1	B	145	HIS	ND1-CG-CD2	-10.50	91.30	106.00
1	A	85	HIS	ND1-CG-CD2	-10.48	91.33	106.00
1	B	85	HIS	ND1-CG-CD2	-10.46	91.36	106.00
1	A	346	GLN	CG-CD-OE1	9.87	141.34	121.60
1	A	145	HIS	ND1-CG-CD2	-9.68	92.45	106.00
1	A	85	HIS	CG-ND1-CE1	9.45	121.42	108.20
1	A	145	HIS	CG-ND1-CE1	9.44	121.41	108.20
1	B	346	GLN	OE1-CD-NE2	-9.29	100.53	121.90
1	B	346	GLN	CG-CD-OE1	8.98	139.56	121.60
1	B	290	ARG	NE-CZ-NH2	-8.76	115.92	120.30

Continued on next page...

Continued from previous page...

Mol	Chain	Res	Type	Atoms	Z	Observed(°)	Ideal(°)
1	A	149	PHE	CB-CG-CD1	-8.63	114.76	120.80
1	B	85	HIS	CG-ND1-CE1	8.61	120.25	108.20
1	A	346	GLN	OE1-CD-NE2	-8.55	102.24	121.90
1	B	149	PHE	CB-CG-CD1	-8.54	114.82	120.80
1	A	24	LEU	CA-CB-CG	8.37	134.54	115.30
1	B	24	LEU	CA-CB-CG	8.32	134.44	115.30
1	B	145	HIS	CG-ND1-CE1	8.18	119.65	108.20
1	A	11	ARG	NH1-CZ-NH2	-7.52	111.13	119.40
1	A	93	ARG	CD-NE-CZ	7.10	133.54	123.60
1	A	290	ARG	CD-NE-CZ	6.91	133.27	123.60
1	B	226	GLU	OE1-CD-OE2	-6.84	115.09	123.30
1	A	201	HIS	ND1-CG-CD2	-6.59	96.78	106.00
1	B	354	GLU	CA-CB-CG	6.59	127.90	113.40
1	B	149	PHE	CB-CG-CD2	6.46	125.32	120.80
1	A	290	ARG	NE-CZ-NH2	-6.43	117.09	120.30
1	B	331	ASP	CB-CG-OD1	6.41	124.07	118.30
1	B	145	HIS	CG-CD2-NE2	6.38	121.31	109.20
1	A	354	GLU	CA-CB-CG	6.27	127.19	113.40
1	A	181	ARG	CD-NE-CZ	6.22	132.30	123.60
1	A	331	ASP	CB-CG-OD1	6.12	123.81	118.30
1	B	85	HIS	CG-CD2-NE2	6.03	120.66	109.20
1	B	93	ARG	CD-NE-CZ	6.02	132.03	123.60
1	B	12	HIS	CA-CB-CG	-6.00	103.41	113.60
1	B	11	ARG	NH1-CZ-NH2	-5.91	112.90	119.40
1	B	201	HIS	ND1-CG-CD2	-5.83	97.84	106.00
1	B	201	HIS	CG-ND1-CE1	5.83	116.36	108.20
1	A	189	ARG	CD-NE-CZ	5.80	131.73	123.60
1	A	24	LEU	N-CA-CB	5.77	121.95	110.40
1	A	224	HIS	CA-CB-CG	-5.61	104.06	113.60
1	A	245	ASP	CB-CG-OD1	5.58	123.33	118.30
1	B	290	ARG	CD-NE-CZ	5.58	131.41	123.60
1	B	412	ARG	NE-CZ-NH2	-5.40	117.60	120.30
1	B	224	HIS	CA-CB-CG	-5.40	104.42	113.60
1	A	204	GLU	CA-CB-CG	5.29	125.04	113.40
1	A	53	TRP	CB-CG-CD1	5.29	133.88	127.00
1	A	85	HIS	CG-CD2-NE2	5.27	119.22	109.20
1	B	145	HIS	CB-CG-ND1	5.26	136.35	123.20
1	A	149	PHE	CB-CG-CD2	5.21	124.45	120.80
1	A	149	PHE	CA-CB-CG	-5.18	101.47	113.90
1	A	53	TRP	CA-CB-CG	5.12	123.44	113.70
1	A	226	GLU	OE1-CD-OE2	-5.12	117.15	123.30
1	B	156	ASP	CB-CG-OD1	5.12	122.91	118.30

Continued on next page...

Continued from previous page...

Mol	Chain	Res	Type	Atoms	Z	Observed(°)	Ideal(°)
1	A	398	TYR	CB-CG-CD2	-5.09	117.94	121.00
1	A	253	ARG	NE-CZ-NH2	5.09	122.84	120.30
1	B	204	GLU	CA-CB-CG	5.08	124.58	113.40
1	A	12	HIS	CA-CB-CG	-5.08	104.97	113.60
1	B	345	GLU	CA-CB-CG	5.01	124.42	113.40

There are no chirality outliers.

All (1) planarity outliers are listed below:

Mol	Chain	Res	Type	Group
1	A	52	TRP	Mainchain

5.2 Too-close contacts [i](#)

In the following table, the Non-H and H(model) columns list the number of non-hydrogen atoms and hydrogen atoms in the chain respectively. The H(added) column lists the number of hydrogen atoms added and optimized by MolProbity. The Clashes column lists the number of clashes within the asymmetric unit, whereas Symm-Clashes lists symmetry related clashes.

Mol	Chain	Non-H	H(model)	H(added)	Clashes	Symm-Clashes
1	A	3201	0	3165	80	0
1	B	3197	0	3163	80	0
2	A	15	0	6	1	0
2	B	15	0	6	0	0
3	A	13	0	16	3	0
3	B	13	0	16	3	0
4	A	1	0	0	0	0
4	B	1	0	0	0	0
5	A	55	0	0	1	0
5	B	39	0	0	2	0
All	All	6550	0	6372	147	0

The all-atom clashscore is defined as the number of clashes found per 1000 atoms (including hydrogen atoms). The all-atom clashscore for this structure is 11.

All (147) close contacts within the same asymmetric unit are listed below, sorted by their clash magnitude.

Atom-1	Atom-2	Interatomic distance (Å)	Clash overlap (Å)
1:B:140:PHE:HD2	1:B:178:PRO:HD3	1.45	0.81

Continued on next page...

Continued from previous page...

Atom-1	Atom-2	Interatomic distance (Å)	Clash overlap (Å)
1:B:140:PHE:CD2	1:B:178:PRO:HD3	2.20	0.77
1:B:77:HIS:HA	1:B:314:PRO:HD2	1.66	0.76
1:B:342:GLN:HG2	1:B:346:GLN:OE1	1.84	0.76
1:A:77:HIS:HA	1:A:314:PRO:HD2	1.66	0.75
1:A:315:LEU:HD23	1:B:281:MET:CE	2.20	0.72
1:B:136:ARG:HD3	1:B:204:GLU:OE1	1.89	0.72
1:A:136:ARG:HD3	1:A:204:GLU:OE1	1.91	0.71
1:A:281:MET:CE	1:B:315:LEU:HD23	2.20	0.70
1:A:313:ASN:ND2	1:A:316:ALA:H	1.90	0.70
1:A:290:ARG:HD3	1:B:11:ARG:HH21	1.57	0.69
1:A:127:TRP:CD2	1:A:134:ARG:HD2	2.28	0.68
1:B:313:ASN:ND2	1:B:316:ALA:H	1.91	0.68
1:B:127:TRP:CD2	1:B:134:ARG:HD2	2.29	0.67
1:A:142:ASN:HD22	1:A:177:ALA:HB2	1.59	0.66
1:A:178:PRO:HG2	1:A:223:TYR:CD2	2.31	0.66
1:A:290:ARG:CD	1:B:11:ARG:HH21	2.09	0.65
1:B:190:ASP:HB3	1:B:227:TRP:CZ2	2.35	0.62
3:B:1430:KAP:HD1	3:B:1430:KAP:HS1	1.83	0.60
1:A:86:ALA:HB3	1:A:87:PRO:HD3	1.84	0.60
1:B:348:ALA:HB3	1:B:349:PRO:HD3	1.82	0.60
1:B:188:GLU:OE2	1:B:230:ARG:NH2	2.32	0.59
1:A:274:LYS:HG2	1:B:309:THR:HG21	1.84	0.59
1:A:226:GLU:OE2	1:A:230:ARG:NH1	2.35	0.59
1:B:180:SER:HB2	1:B:190:ASP:OD2	2.03	0.59
1:A:43:ARG:HD2	5:A:2050:HOH:O	2.01	0.59
1:A:140:PHE:CD2	1:A:178:PRO:HD3	2.38	0.58
1:A:392:PRO:O	1:A:393:PHE:CB	2.53	0.57
1:A:140:PHE:CE2	1:A:178:PRO:HG3	2.41	0.56
1:A:173:LEU:HD13	1:A:201:HIS:HD2	1.70	0.56
1:B:226:GLU:OE2	1:B:230:ARG:NH1	2.39	0.56
1:A:15:HIS:HB3	1:A:16:PRO:CD	2.36	0.55
1:B:212:PRO:HG2	1:B:246:GLU:HG2	1.87	0.54
1:A:11:ARG:HH21	1:B:290:ARG:HD3	1.72	0.54
1:A:309:THR:HG21	1:B:274:LYS:HG2	1.90	0.54
1:B:86:ALA:HB3	1:B:87:PRO:HD3	1.90	0.53
1:B:178:PRO:HG2	1:B:223:TYR:CD2	2.44	0.53
1:A:346:GLN:NE2	1:A:411:GLN:HG2	2.24	0.53
1:B:145:HIS:HD2	1:B:245:ASP:OD2	1.92	0.53
1:B:17:TYR:OH	3:B:1430:KAP:N	2.42	0.52
2:A:1429:PLP:C4A	3:A:1430:KAP:O	2.58	0.52
1:A:281:MET:HE3	1:B:315:LEU:HD23	1.90	0.52

Continued on next page...

Continued from previous page...

Atom-1	Atom-2	Interatomic distance (Å)	Clash overlap (Å)
1:A:392:PRO:O	1:A:393:PHE:HB3	2.09	0.52
1:A:348:ALA:HB3	1:A:349:PRO:HD3	1.92	0.51
1:A:173:LEU:HD13	1:A:201:HIS:CD2	2.46	0.51
1:A:290:ARG:CZ	1:B:11:ARG:HE	2.24	0.51
1:A:140:PHE:CE1	1:A:210:ILE:HG21	2.45	0.51
1:B:392:PRO:O	1:B:393:PHE:CB	2.57	0.51
1:B:2:THR:H	1:B:5:ASP:HB2	1.76	0.51
1:A:74:ALA:O	1:A:75:MET:HB3	2.12	0.50
1:A:212:PRO:HG2	1:A:246:GLU:HG2	1.92	0.50
1:A:15:HIS:HB3	1:A:16:PRO:HD2	1.93	0.49
1:A:379:LEU:HG	1:A:383:PHE:CE2	2.47	0.49
1:B:379:LEU:HG	1:B:383:PHE:CE2	2.48	0.49
1:A:50:SER:HB2	1:A:53:TRP:HA	1.94	0.49
1:B:157:PRO:HD3	1:B:174:PHE:CE2	2.47	0.49
1:B:306:HIS:HD2	1:B:308:PRO:HD3	1.78	0.48
1:B:313:ASN:HD22	1:B:316:ALA:H	1.61	0.48
3:A:1430:KAP:HD1	3:A:1430:KAP:HS1	1.94	0.48
1:A:90:GLU:HB3	1:A:321:ASN:ND2	2.28	0.48
1:B:202:ARG:O	1:B:240:ILE:HD11	2.14	0.48
1:A:274:LYS:HE3	1:B:309:THR:OG1	2.13	0.48
1:B:277:THR:CG2	1:B:283:LEU:HB3	2.43	0.48
1:B:180:SER:HB3	1:B:224:HIS:HB2	1.95	0.48
1:B:343:LEU:HD13	1:B:366:GLY:HA3	1.97	0.47
1:A:203:HIS:ND1	1:A:203:HIS:N	2.54	0.47
1:B:374:VAL:HG21	1:B:392:PRO:HB2	1.97	0.47
1:B:173:LEU:HD11	1:B:201:HIS:CD2	2.50	0.47
1:B:383:PHE:HB3	1:B:388:VAL:HG23	1.96	0.47
1:B:140:PHE:CE2	1:B:178:PRO:HG3	2.50	0.46
1:B:50:SER:HB2	1:B:53:TRP:HA	1.98	0.46
1:B:186:TRP:HZ3	1:B:227:TRP:CD1	2.32	0.46
1:A:173:LEU:CD1	1:A:201:HIS:CD2	2.99	0.46
1:A:11:ARG:NH2	1:B:290:ARG:HD3	2.31	0.46
1:A:277:THR:CG2	1:A:283:LEU:HB3	2.45	0.46
1:A:309:THR:OG1	1:B:274:LYS:HE3	2.15	0.46
1:B:427:PHE:O	1:B:428:CYS:HB2	2.16	0.46
1:A:140:PHE:HD1	1:A:210:ILE:HG22	1.80	0.45
1:B:41:ASP:OD2	1:B:43:ARG:NE	2.47	0.45
1:A:140:PHE:HE1	1:A:210:ILE:HG21	1.81	0.45
1:A:24:LEU:HB2	1:A:25:PRO:HD2	1.98	0.45
1:A:41:ASP:OD2	1:A:43:ARG:NE	2.47	0.45
1:B:140:PHE:CE1	1:B:210:ILE:HG21	2.51	0.45

Continued on next page...

Continued from previous page...

Atom-1	Atom-2	Interatomic distance (Å)	Clash overlap (Å)
1:A:140:PHE:HD2	1:A:178:PRO:HD3	1.81	0.45
1:A:14:LEU:CD1	1:A:20:MET:HG3	2.47	0.45
1:A:212:PRO:HG2	1:A:246:GLU:CG	2.47	0.45
1:B:116:VAL:O	1:B:120:MET:HG3	2.17	0.45
1:A:374:VAL:HG21	1:A:392:PRO:HB2	1.99	0.45
1:A:427:PHE:O	1:A:428:CYS:HB2	2.16	0.45
1:B:140:PHE:CD1	1:B:210:ILE:HG22	2.52	0.45
1:B:175:ALA:HA	1:B:197:LEU:HD12	1.99	0.45
1:A:139:THR:OG1	1:A:140:PHE:N	2.49	0.44
1:A:306:HIS:HD2	1:A:308:PRO:HD3	1.82	0.44
1:B:10:GLN:HG3	1:B:23:PRO:HG2	2.00	0.44
1:B:127:TRP:CE3	1:B:134:ARG:HD2	2.52	0.44
1:A:76:SER:HB2	1:B:280:THR:O	2.17	0.44
1:B:212:PRO:HG2	1:B:246:GLU:CG	2.47	0.44
1:B:74:ALA:O	1:B:75:MET:HB3	2.17	0.44
1:A:173:LEU:HD22	1:A:201:HIS:CD2	2.53	0.44
1:B:189:ARG:O	1:B:190:ASP:C	2.54	0.44
1:A:220:MET:HB3	1:A:367:VAL:HG21	2.00	0.44
1:B:145:HIS:HE1	5:B:2020:HOH:O	2.00	0.44
1:B:192:VAL:O	1:B:196:ARG:N	2.38	0.44
1:B:134:ARG:NH1	1:B:202:ARG:O	2.45	0.43
1:A:49:MET:O	1:A:50:SER:HB2	2.18	0.43
1:A:14:LEU:HG	1:A:20:MET:CG	2.49	0.43
1:A:2:THR:H	1:A:5:ASP:HB2	1.83	0.43
1:B:392:PRO:O	1:B:393:PHE:HB3	2.19	0.43
1:B:14:LEU:CD1	1:B:20:MET:HG3	2.49	0.42
1:B:180:SER:HB3	1:B:224:HIS:CB	2.49	0.42
1:A:10:GLN:HG3	1:A:23:PRO:HG2	2.01	0.42
1:A:315:LEU:HD23	1:B:281:MET:HE2	1.99	0.42
1:A:343:LEU:HD13	1:A:366:GLY:HA3	2.00	0.42
1:A:173:LEU:CD1	1:A:201:HIS:HD2	2.31	0.42
1:A:202:ARG:O	1:A:240:ILE:HD11	2.20	0.42
1:B:212:PRO:O	1:B:214:VAL:N	2.52	0.42
1:A:387:GLY:HA3	1:A:412:ARG:NH2	2.34	0.42
1:B:187:ASP:O	1:B:190:ASP:HB2	2.20	0.42
1:B:220:MET:HB3	1:B:367:VAL:HG21	2.01	0.42
1:B:382:PHE:O	1:B:386:GLN:HG2	2.19	0.42
1:A:173:LEU:CD2	1:A:201:HIS:CD2	3.03	0.42
1:A:9:ASP:HA	1:A:13:ILE:HD12	2.02	0.41
1:A:134:ARG:NH1	1:A:202:ARG:O	2.46	0.41
1:B:343:LEU:CD2	1:B:410:LEU:HD11	2.50	0.41

Continued on next page...

Continued from previous page...

Atom-1	Atom-2	Interatomic distance (Å)	Clash overlap (Å)
1:A:281:MET:HE1	1:A:315:LEU:CD2	2.51	0.41
1:B:233:LYS:N	1:B:233:LYS:HD2	2.34	0.41
1:B:339:ILE:HG23	1:B:410:LEU:HD21	2.02	0.41
1:A:343:LEU:CD2	1:A:410:LEU:HD11	2.50	0.41
1:B:18:THR:OG1	1:B:19:SER:N	2.52	0.41
1:B:186:TRP:HE1	1:B:230:ARG:NH2	2.18	0.41
1:B:343:LEU:HD13	1:B:366:GLY:CA	2.51	0.41
1:A:36:GLU:HA	1:A:45:LEU:O	2.21	0.41
1:A:280:THR:O	1:B:76:SER:HB2	2.21	0.41
1:A:17:TYR:OH	3:A:1430:KAP:N	2.54	0.41
1:B:110:ASP:OD2	1:B:308:PRO:HB3	2.21	0.41
1:B:23:PRO:HB2	5:B:2011:HOH:O	2.19	0.41
1:A:233:LYS:N	1:A:233:LYS:HD2	2.35	0.41
1:A:256:LYS:HD2	1:A:262:HIS:ND1	2.36	0.41
1:B:90:GLU:HB3	1:B:321:ASN:ND2	2.36	0.41
1:A:370:THR:HG21	1:A:427:PHE:CE1	2.56	0.41
1:A:383:PHE:HB3	1:A:388:VAL:HG23	2.03	0.41
1:A:306:HIS:CE1	1:B:147:ASP:HB2	2.56	0.41
1:A:38:ILE:HG12	1:A:44:ARG:HG2	2.03	0.40
1:B:391:ARG:HE	3:B:1430:KAP:C	2.35	0.40
1:A:224:HIS:HA	1:A:225:PRO:HD3	1.91	0.40
1:A:252:GLY:HA2	1:A:256:LYS:O	2.21	0.40
1:A:312:GLY:O	1:A:313:ASN:C	2.60	0.40

There are no symmetry-related clashes.

5.3 Torsion angles [\(i\)](#)

5.3.1 Protein backbone [\(i\)](#)

In the following table, the Percentiles column shows the percent Ramachandran outliers of the chain as a percentile score with respect to all X-ray entries followed by that with respect to entries of similar resolution.

The Analysed column shows the number of residues for which the backbone conformation was analysed, and the total number of residues.

Mol	Chain	Analysed	Favoured	Allowed	Outliers	Percentiles
1	A	408/429 (95%)	388 (95%)	15 (4%)	5 (1%)	13 32
1	B	407/429 (95%)	380 (93%)	20 (5%)	7 (2%)	9 23

Continued on next page...

Continued from previous page...

Mol	Chain	Analysed	Favoured	Allowed	Outliers	Percentiles	
All	All	815/858 (95%)	768 (94%)	35 (4%)	12 (2%)	10	26

All (12) Ramachandran outliers are listed below:

Mol	Chain	Res	Type
1	A	274	LYS
1	B	274	LYS
1	A	216	GLY
1	B	216	GLY
1	A	75	MET
1	B	75	MET
1	B	180	SER
1	A	393	PHE
1	B	202	ARG
1	B	393	PHE
1	B	307	GLY
1	A	307	GLY

5.3.2 Protein sidechains [i](#)

In the following table, the Percentiles column shows the percent sidechain outliers of the chain as a percentile score with respect to all X-ray entries followed by that with respect to entries of similar resolution.

The Analysed column shows the number of residues for which the sidechain conformation was analysed, and the total number of residues.

Mol	Chain	Analysed	Rotameric	Outliers	Percentiles	
1	A	334/345 (97%)	315 (94%)	19 (6%)	20	44
1	B	334/345 (97%)	311 (93%)	23 (7%)	15	35
All	All	668/690 (97%)	626 (94%)	42 (6%)	18	40

All (42) residues with a non-rotameric sidechain are listed below:

Mol	Chain	Res	Type
1	A	3	THR
1	A	4	ASP
1	A	24	LEU
1	A	40	SER
1	A	53	TRP
1	A	76	SER

Continued on next page...

Continued from previous page...

Mol	Chain	Res	Type
1	A	80	PHE
1	A	90	GLU
1	A	110	ASP
1	A	185	GLU
1	A	202	ARG
1	A	203	HIS
1	A	210	ILE
1	A	237	ARG
1	A	281	MET
1	A	393	PHE
1	A	408	GLN
1	A	410	LEU
1	A	424	GLU
1	B	3	THR
1	B	4	ASP
1	B	11	ARG
1	B	24	LEU
1	B	40	SER
1	B	53	TRP
1	B	76	SER
1	B	80	PHE
1	B	90	GLU
1	B	110	ASP
1	B	180	SER
1	B	182	MET
1	B	190	ASP
1	B	191	MET
1	B	202	ARG
1	B	203	HIS
1	B	210	ILE
1	B	237	ARG
1	B	344	ARG
1	B	393	PHE
1	B	408	GLN
1	B	410	LEU
1	B	424	GLU

Some sidechains can be flipped to improve hydrogen bonding and reduce clashes. All (13) such sidechains are listed below:

Mol	Chain	Res	Type
1	A	125	GLN
1	A	142	ASN

Continued on next page...

Continued from previous page...

Mol	Chain	Res	Type
1	A	201	HIS
1	A	313	ASN
1	A	335	GLN
1	A	346	GLN
1	B	125	GLN
1	B	142	ASN
1	B	145	HIS
1	B	313	ASN
1	B	335	GLN
1	B	342	GLN
1	B	386	GLN

5.3.3 RNA [i](#)

There are no RNA molecules in this entry.

5.4 Non-standard residues in protein, DNA, RNA chains [i](#)

There are no non-standard protein/DNA/RNA residues in this entry.

5.5 Carbohydrates [i](#)

There are no carbohydrates in this entry.

5.6 Ligand geometry [i](#)

Of 6 ligands modelled in this entry, 2 are monoatomic - leaving 4 for Mogul analysis.

In the following table, the Counts columns list the number of bonds (or angles) for which Mogul statistics could be retrieved, the number of bonds (or angles) that are observed in the model and the number of bonds (or angles) that are defined in the Chemical Component Dictionary. The Link column lists molecule types, if any, to which the group is linked. The Z score for a bond length (or angle) is the number of standard deviations the observed value is removed from the expected value. A bond length (or angle) with $|Z| > 2$ is considered an outlier worth inspection. RMSZ is the root-mean-square of all Z scores of the bond lengths (or angles).

Mol	Type	Chain	Res	Link	Bond lengths			Bond angles		
					Counts	RMSZ	# Z > 2	Counts	RMSZ	# Z > 2
3	KAP	A	1430	-	8,12,12	0.97	1 (12%)	7,14,14	4.01	3 (42%)
3	KAP	B	1430	-	8,12,12	1.14	2 (25%)	7,14,14	2.87	1 (14%)

Mol	Type	Chain	Res	Link	Bond lengths			Bond angles		
					Counts	RMSZ	# Z > 2	Counts	RMSZ	# Z > 2
2	PLP	A	1429	1	15,15,16	1.42	3 (20%)	20,22,23	2.52	8 (40%)
2	PLP	B	1429	1	15,15,16	1.41	2 (13%)	20,22,23	2.58	8 (40%)

In the following table, the Chirals column lists the number of chiral outliers, the number of chiral centers analysed, the number of these observed in the model and the number defined in the Chemical Component Dictionary. Similar counts are reported in the Torsion and Rings columns. '-' means no outliers of that kind were identified.

Mol	Type	Chain	Res	Link	Chirals	Torsions	Rings
3	KAP	A	1430	-	-	5/8/12/12	-
3	KAP	B	1430	-	-	6/8/12/12	-
2	PLP	A	1429	1	-	2/6/6/8	0/1/1/1
2	PLP	B	1429	1	-	2/6/6/8	0/1/1/1

All (8) bond length outliers are listed below:

Mol	Chain	Res	Type	Atoms	Z	Observed(Å)	Ideal(Å)
2	B	1429	PLP	O4P-C5A	-3.09	1.33	1.45
2	A	1429	PLP	O4P-C5A	-3.09	1.33	1.45
2	B	1429	PLP	O3-C3	-2.89	1.30	1.37
2	A	1429	PLP	O3-C3	-2.47	1.31	1.37
3	B	1430	KAP	CE-CZ	-2.28	1.48	1.51
3	B	1430	KAP	O-CZ	2.15	1.25	1.21
3	A	1430	KAP	CE-CZ	-2.14	1.48	1.51
2	A	1429	PLP	C5-C4	-2.13	1.38	1.40

All (20) bond angle outliers are listed below:

Mol	Chain	Res	Type	Atoms	Z	Observed(°)	Ideal(°)
3	A	1430	KAP	CE-CZ-CH	8.75	133.79	116.94
3	B	1430	KAP	CE-CZ-CH	7.03	130.48	116.94
2	B	1429	PLP	O4P-C5A-C5	6.51	121.75	109.35
2	A	1429	PLP	O4P-C5A-C5	6.34	121.44	109.35
2	A	1429	PLP	C5A-C5-C6	-6.04	109.44	119.37
2	B	1429	PLP	C5A-C5-C6	-5.57	110.21	119.37
3	A	1430	KAP	O-CZ-CE	-4.32	114.01	121.70
2	B	1429	PLP	C2A-C2-C3	3.60	125.33	120.89
3	A	1430	KAP	CG-CD-CE	-3.32	101.26	113.19
2	A	1429	PLP	C2A-C2-C3	3.25	124.90	120.89
2	B	1429	PLP	C6-N1-C2	3.23	125.15	119.17
2	B	1429	PLP	O2P-P-O4P	2.96	114.60	106.73

Continued on next page...

Continued from previous page...

Mol	Chain	Res	Type	Atoms	Z	Observed(°)	Ideal(°)
2	A	1429	PLP	C6-N1-C2	2.85	124.44	119.17
2	B	1429	PLP	C3-C2-N1	-2.74	117.22	120.77
2	A	1429	PLP	C4A-C4-C5	2.39	123.39	120.94
2	A	1429	PLP	C3-C2-N1	-2.36	117.71	120.77
2	A	1429	PLP	O2P-P-O4P	2.35	112.99	106.73
2	B	1429	PLP	C4A-C4-C5	2.07	123.06	120.94
2	B	1429	PLP	C5-C6-N1	-2.00	120.48	123.82
2	A	1429	PLP	O3-C3-C4	2.00	123.37	118.10

There are no chirality outliers.

All (15) torsion outliers are listed below:

Mol	Chain	Res	Type	Atoms
2	A	1429	PLP	C4-C5-C5A-O4P
2	A	1429	PLP	C6-C5-C5A-O4P
3	A	1430	KAP	C-CA-CB-CG
3	B	1430	KAP	C-CA-CB-CG
3	B	1430	KAP	CD-CE-CZ-CH
3	B	1430	KAP	CD-CE-CZ-O
2	B	1429	PLP	C4-C5-C5A-O4P
2	B	1429	PLP	C6-C5-C5A-O4P
3	A	1430	KAP	CG-CD-CE-CZ
3	B	1430	KAP	CA-CB-CG-CD
3	B	1430	KAP	CG-CD-CE-CZ
3	B	1430	KAP	CE-CD-CG-CB
3	A	1430	KAP	CD-CE-CZ-O
3	A	1430	KAP	CA-CB-CG-CD
3	A	1430	KAP	CD-CE-CZ-CH

There are no ring outliers.

3 monomers are involved in 6 short contacts:

Mol	Chain	Res	Type	Clashes	Symm-Clashes
3	A	1430	KAP	3	0
3	B	1430	KAP	3	0
2	A	1429	PLP	1	0

5.7 Other polymers [i](#)

There are no such residues in this entry.

5.8 Polymer linkage issues

There are no chain breaks in this entry.

6 Fit of model and data

6.1 Protein, DNA and RNA chains

EDS was not executed - this section is therefore empty.

6.2 Non-standard residues in protein, DNA, RNA chains

EDS was not executed - this section is therefore empty.

6.3 Carbohydrates

EDS was not executed - this section is therefore empty.

6.4 Ligands

EDS was not executed - this section is therefore empty.

6.5 Other polymers

EDS was not executed - this section is therefore empty.