



# wwPDB X-ray Structure Validation Summary Report ⓘ

Jun 14, 2020 – 04:52 am BST

PDB ID : 1PVC  
Title : REFINEMENT OF THE SABIN STRAIN OF TYPE 3 POLIOVIRUS AT 2.4  
ANGSTROMS AND THE CRYSTAL STRUCTURES OF ITS VARIANTS  
AT 2.9 ANGSTROMS RESOLUTION  
Authors : Syed, R.; Filman, D.J.; Hogle, J.M.  
Deposited on : 1995-03-30  
Resolution : 2.40 Å(reported)

This is a wwPDB X-ray Structure Validation Summary Report for a publicly released PDB entry.

We welcome your comments at [validation@mail.wwpdb.org](mailto:validation@mail.wwpdb.org)

A user guide is available at

<https://www.wwpdb.org/validation/2017/XrayValidationReportHelp>

with specific help available everywhere you see the ⓘ symbol.

---

The following versions of software and data (see [references ⓘ](#)) were used in the production of this report:

MolProbity : 4.02b-467  
Mogul : 1.8.5 (274361), CSD as541be (2020)  
Xtrriage (Phenix) : **NOT EXECUTED**  
EDS : **NOT EXECUTED**  
buster-report : 1.1.7 (2018)  
Percentile statistics : 20191225.v01 (using entries in the PDB archive December 25th 2019)  
Ideal geometry (proteins) : Engh & Huber (2001)  
Ideal geometry (DNA, RNA) : Parkinson et al. (1996)  
Validation Pipeline (wwPDB-VP) : 2.11

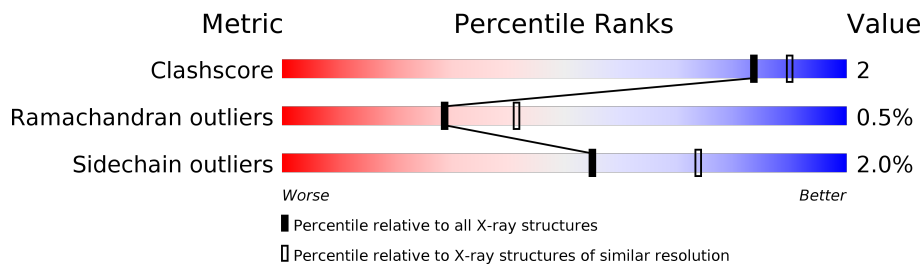
# 1 Overall quality at a glance

The following experimental techniques were used to determine the structure:

*X-RAY DIFFRACTION*

The reported resolution of this entry is 2.40 Å.

Percentile scores (ranging between 0-100) for global validation metrics of the entry are shown in the following graphic. The table shows the number of entries on which the scores are based.



Metric	Whole archive (#Entries)	Similar resolution (#Entries, resolution range(Å))
Clashscore	141614	4398 (2.40-2.40)
Ramachandran outliers	138981	4318 (2.40-2.40)
Sidechain outliers	138945	4319 (2.40-2.40)

The table below summarises the geometric issues observed across the polymeric chains and their fit to the electron density. The red, orange, yellow and green segments on the lower bar indicate the fraction of residues that contain outliers for  $\geq 3$ , 2, 1 and 0 types of geometric quality criteria respectively. A grey segment represents the fraction of residues that are not modelled. The numeric value for each fraction is indicated below the corresponding segment, with a dot representing fractions  $\leq 5\%$

Note EDS was not executed.

Mol	Chain	Length	Quality of chain
1	0	4	
2	1	301	
3	2	271	
4	3	238	
5	4	68	

The following table lists non-polymeric compounds, carbohydrate monomers and non-standard residues in protein, DNA, RNA chains that are outliers for geometric or electron-density-fit criteria:

Mol	Type	Chain	Res	Chirality	Geometry	Clashes	Electron density
6	SPH	1	1000	X	-	-	-

## 2 Entry composition [i](#)

There are 8 unique types of molecules in this entry. The entry contains 7075 atoms, of which 0 are hydrogens and 0 are deuteriums.

In the tables below, the ZeroOcc column contains the number of atoms modelled with zero occupancy, the AltConf column contains the number of residues with at least one atom in alternate conformation and the Trace column contains the number of residues modelled with at most 2 atoms.

- Molecule 1 is a protein called POLIOVIRUS TYPE 3, SABIN STRAIN.

Mol	Chain	Residues	Atoms				ZeroOcc	AltConf	Trace
			Total	C	N	O			
1	0	4	30	19	4	7	0	0	0

- Molecule 2 is a protein called POLIOVIRUS TYPE 3, SABIN STRAIN.

Mol	Chain	Residues	Atoms					ZeroOcc	AltConf	Trace
			Total	C	N	O	S			
2	1	279	2214	1408	383	416	7	0	0	0

- Molecule 3 is a protein called POLIOVIRUS TYPE 3, SABIN STRAIN.

Mol	Chain	Residues	Atoms					ZeroOcc	AltConf	Trace
			Total	C	N	O	S			
3	2	266	2088	1330	354	392	12	0	0	0

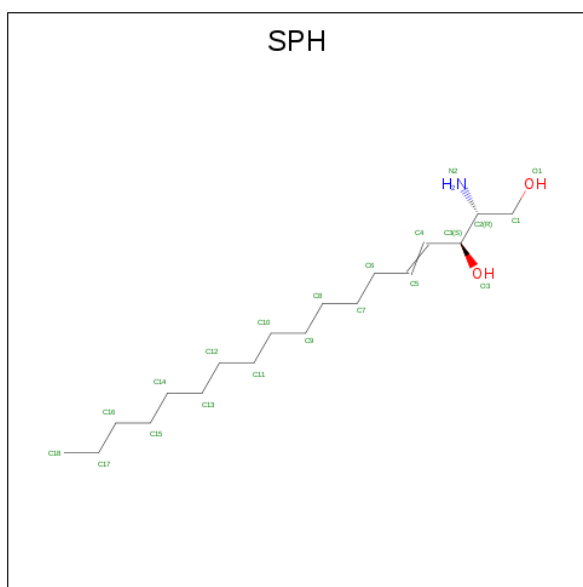
- Molecule 4 is a protein called POLIOVIRUS TYPE 3, SABIN STRAIN.

Mol	Chain	Residues	Atoms					ZeroOcc	AltConf	Trace
			Total	C	N	O	S			
4	3	235	1812	1150	296	348	18	0	0	0

- Molecule 5 is a protein called POLIOVIRUS TYPE 3, SABIN STRAIN.

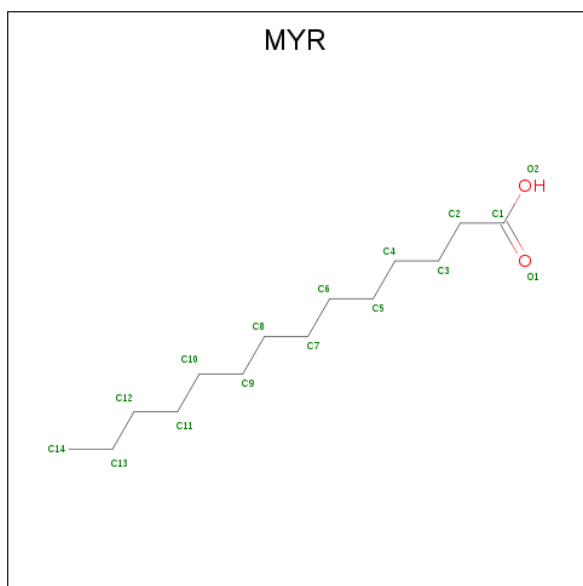
Mol	Chain	Residues	Atoms				ZeroOcc	AltConf	Trace
			Total	C	N	O			
5	4	62	472	291	79	102	0	0	0

- Molecule 6 is SPHINGOSINE (three-letter code: SPH) (formula: C<sub>18</sub>H<sub>37</sub>NO<sub>2</sub>).



Mol	Chain	Residues	Atoms				ZeroOcc	AltConf
			Total	C	N	O		
6	1	1	21	18	1	2	0	0

- Molecule 7 is MYRISTIC ACID (three-letter code: MYR) (formula:  $C_{14}H_{28}O_2$ ).



Mol	Chain	Residues	Atoms			ZeroOcc	AltConf
			Total	C	O		
7	4	1	15	14	1	0	0

- Molecule 8 is water.

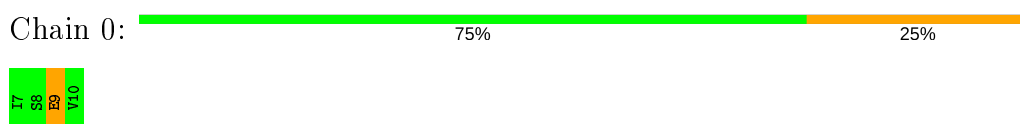
<b>Mol</b>	<b>Chain</b>	<b>Residues</b>	<b>Atoms</b>		<b>ZeroOcc</b>	<b>AltConf</b>
8	1	143	Total 143	O 143	0	0
8	2	130	Total 130	O 130	0	0
8	3	119	Total 119	O 119	0	0
8	4	31	Total 31	O 31	0	0

### 3 Residue-property plots [i](#)

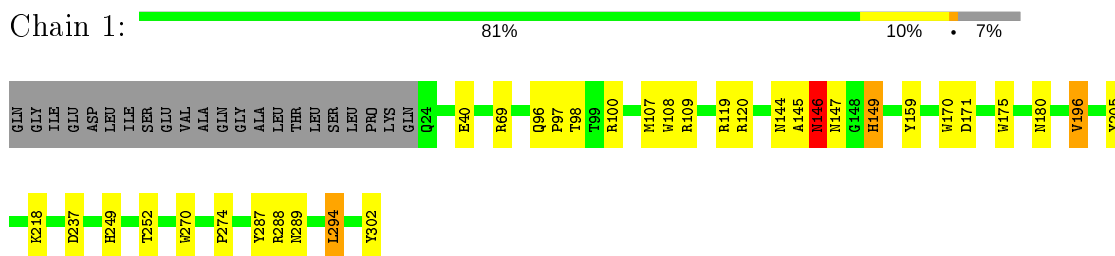
These plots are drawn for all protein, RNA and DNA chains in the entry. The first graphic for a chain summarises the proportions of the various outlier classes displayed in the second graphic. The second graphic shows the sequence view annotated by issues in geometry. Residues are color-coded according to the number of geometric quality criteria for which they contain at least one outlier: green = 0, yellow = 1, orange = 2 and red = 3 or more. Stretches of 2 or more consecutive residues without any outlier are shown as a green connector. Residues present in the sample, but not in the model, are shown in grey.

Note EDS was not executed.

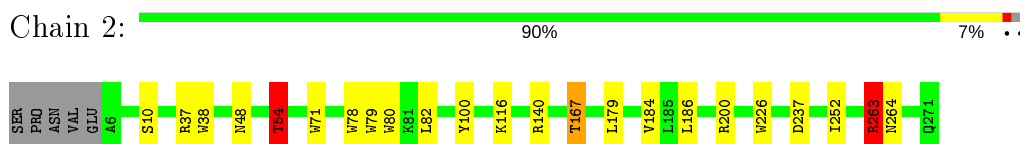
- Molecule 1: POLIOVIRUS TYPE 3, SABIN STRAIN



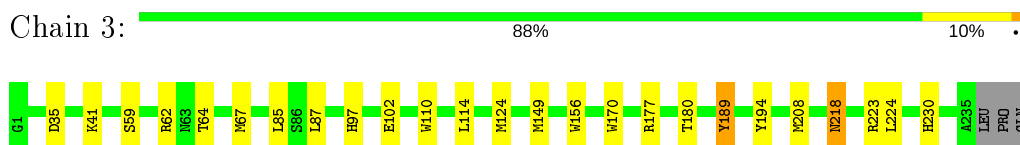
- Molecule 2: POLIOVIRUS TYPE 3, SABIN STRAIN



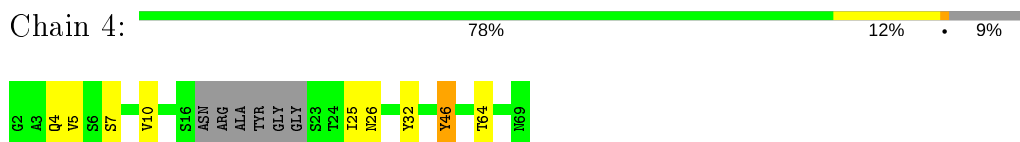
- Molecule 3: POLIOVIRUS TYPE 3, SABIN STRAIN



- Molecule 4: POLIOVIRUS TYPE 3, SABIN STRAIN



- Molecule 5: POLIOVIRUS TYPE 3, SABIN STRAIN



## 4 Data and refinement statistics

Xtrriage (Phenix) and EDS were not executed - this section is therefore incomplete.

Property	Value	Source
Space group	I 2 2 2	Depositor
Cell constants a, b, c, $\alpha$ , $\beta$ , $\gamma$	321.06Å 358.62Å 381.82Å 90.00° 90.00° 90.00°	Depositor
Resolution (Å)	10.00 – 2.40	Depositor
% Data completeness (in resolution range)	61.4 (10.00-2.40)	Depositor
$R_{merge}$	(Not available)	Depositor
$R_{sym}$	(Not available)	Depositor
Refinement program	X-PLOR	Depositor
R, $R_{free}$	0.205 , (Not available)	Depositor
Estimated twinning fraction	No twinning to report.	Xtrriage
Total number of atoms	7075	wwPDB-VP
Average B, all atoms (Å <sup>2</sup> )	11.0	wwPDB-VP



## 5 Model quality [i](#)

### 5.1 Standard geometry [i](#)

Bond lengths and bond angles in the following residue types are not validated in this section: SPH, MYR

The Z score for a bond length (or angle) is the number of standard deviations the observed value is removed from the expected value. A bond length (or angle) with  $|Z| > 5$  is considered an outlier worth inspection. RMSZ is the root-mean-square of all Z scores of the bond lengths (or angles).

Mol	Chain	Bond lengths		Bond angles	
		RMSZ	# $ Z  > 5$	RMSZ	# $ Z  > 5$
1	0	1.66	0/29	1.63	1/38 (2.6%)
2	1	0.76	0/2278	1.37	25/3111 (0.8%)
3	2	0.78	0/2146	1.42	29/2926 (1.0%)
4	3	0.76	0/1857	1.34	17/2533 (0.7%)
5	4	0.77	0/479	1.31	1/647 (0.2%)
All	All	0.77	0/6789	1.37	73/9255 (0.8%)

There are no bond length outliers.

The worst 5 of 73 bond angle outliers are listed below:

Mol	Chain	Res	Type	Atoms	Z	Observed( $^{\circ}$ )	Ideal( $^{\circ}$ )
2	1	107	MET	CG-SD-CE	-9.66	84.74	100.20
4	3	85	LEU	CA-CB-CG	8.82	135.58	115.30
3	2	200	ARG	NE-CZ-NH1	8.44	124.52	120.30
2	1	170	TRP	CD1-CG-CD2	8.42	113.03	106.30
3	2	78	TRP	CD1-CG-CD2	8.38	113.00	106.30

There are no chirality outliers.

There are no planarity outliers.

### 5.2 Too-close contacts [i](#)

In the following table, the Non-H and H(model) columns list the number of non-hydrogen atoms and hydrogen atoms in the chain respectively. The H(added) column lists the number of hydrogen atoms added and optimized by MolProbity. The Clashes column lists the number of clashes within the asymmetric unit, whereas Symm-Clashes lists symmetry related clashes.

Mol	Chain	Non-H	H(model)	H(added)	Clashes	Symm-Clashes
1	0	30	0	30	1	0

*Continued on next page...*

Continued from previous page...

Mol	Chain	Non-H	H(model)	H(added)	Clashes	Symm-Clashes
2	1	2214	0	2150	15	0
3	2	2088	0	2005	6	0
4	3	1812	0	1792	10	0
5	4	472	0	453	6	0
6	1	21	0	37	3	0
7	4	15	0	27	1	0
8	1	143	0	0	2	0
8	2	130	0	0	1	0
8	3	119	0	0	4	0
8	4	31	0	0	0	0
All	All	7075	0	6494	31	0

The all-atom clashscore is defined as the number of clashes found per 1000 atoms (including hydrogen atoms). The all-atom clashscore for this structure is 2.

The worst 5 of 31 close contacts within the same asymmetric unit are listed below, sorted by their clash magnitude.

Atom-1	Atom-2	Interatomic distance (Å)	Clash overlap (Å)
4:3:97:HIS:ND1	8:3:239:HOH:O	1.75	1.15
4:3:102:GLU:OE2	8:3:239:HOH:O	1.83	0.95
2:1:146:ASN:HA	8:1:1003:HOH:O	1.79	0.82
4:3:230:HIS:ND1	8:3:239:HOH:O	1.95	0.80
2:1:294:LEU:HD13	4:3:67:MET:SD	2.39	0.63

There are no symmetry-related clashes.

## 5.3 Torsion angles [i](#)

### 5.3.1 Protein backbone [i](#)

In the following table, the Percentiles column shows the percent Ramachandran outliers of the chain as a percentile score with respect to all X-ray entries followed by that with respect to entries of similar resolution.

The Analysed column shows the number of residues for which the backbone conformation was analysed, and the total number of residues.

Mol	Chain	Analysed	Favoured	Allowed	Outliers	Percentiles
1	0	2/4 (50%)	2 (100%)	0	0	100 100
2	1	277/301 (92%)	264 (95%)	11 (4%)	2 (1%)	22 32

Continued on next page...

Continued from previous page...

Mol	Chain	Analysed	Favoured	Allowed	Outliers	Percentiles	
3	2	264/271 (97%)	251 (95%)	11 (4%)	2 (1%)	19	29
4	3	233/238 (98%)	227 (97%)	6 (3%)	0	100	100
5	4	58/68 (85%)	56 (97%)	2 (3%)	0	100	100
All	All	834/882 (95%)	800 (96%)	30 (4%)	4 (0%)	29	41

All (4) Ramachandran outliers are listed below:

Mol	Chain	Res	Type
2	1	146	ASN
3	2	167	THR
3	2	48	ASN
2	1	237	ASP

### 5.3.2 Protein sidechains [i](#)

In the following table, the Percentiles column shows the percent sidechain outliers of the chain as a percentile score with respect to all X-ray entries followed by that with respect to entries of similar resolution.

The Analysed column shows the number of residues for which the sidechain conformation was analysed, and the total number of residues.

Mol	Chain	Analysed	Rotameric	Outliers	Percentiles	
1	0	4/4 (100%)	4 (100%)	0	100	100
2	1	241/259 (93%)	237 (98%)	4 (2%)	60	78
3	2	224/229 (98%)	220 (98%)	4 (2%)	59	76
4	3	210/213 (99%)	204 (97%)	6 (3%)	42	62
5	4	53/56 (95%)	52 (98%)	1 (2%)	57	75
All	All	732/761 (96%)	717 (98%)	15 (2%)	55	74

5 of 15 residues with a non-rotameric sidechain are listed below:

Mol	Chain	Res	Type
3	2	167	THR
3	2	263	ARG
4	3	218	ASN
3	2	54	THR
4	3	208	MET

Some sidechains can be flipped to improve hydrogen bonding and reduce clashes. 5 of 11 such sidechains are listed below:

Mol	Chain	Res	Type
2	1	289	ASN
3	2	139	GLN
4	3	181	GLN
2	1	153	GLN
4	3	140	GLN

### 5.3.3 RNA [i](#)

There are no RNA molecules in this entry.

## 5.4 Non-standard residues in protein, DNA, RNA chains [i](#)

There are no non-standard protein/DNA/RNA residues in this entry.

## 5.5 Carbohydrates [i](#)

There are no carbohydrates in this entry.

## 5.6 Ligand geometry [i](#)

2 ligands are modelled in this entry.

In the following table, the Counts columns list the number of bonds (or angles) for which Mogul statistics could be retrieved, the number of bonds (or angles) that are observed in the model and the number of bonds (or angles) that are defined in the Chemical Component Dictionary. The Link column lists molecule types, if any, to which the group is linked. The Z score for a bond length (or angle) is the number of standard deviations the observed value is removed from the expected value. A bond length (or angle) with  $|Z| > 2$  is considered an outlier worth inspection. RMSZ is the root-mean-square of all Z scores of the bond lengths (or angles).

Mol	Type	Chain	Res	Link	Bond lengths			Bond angles		
					Counts	RMSZ	$\# Z  > 2$	Counts	RMSZ	$\# Z  > 2$
7	MYR	4	1	5	14,14,15	0.64	0	13,13,15	0.69	0
6	SPH	1	1000	-	19,20,20	1.08	1 (5%)	18,21,21	1.96	4 (22%)

In the following table, the Chirals column lists the number of chiral outliers, the number of chiral centers analysed, the number of these observed in the model and the number defined in the Chemical Component Dictionary. Similar counts are reported in the Torsion and Rings columns. '-' means no outliers of that kind were identified.

Mol	Type	Chain	Res	Link	Chirals	Torsions	Rings
7	MYR	4	1	5	-	1/11/12/13	-
6	SPH	1	1000	-	1/1/2/4	7/21/21/21	-

All (1) bond length outliers are listed below:

Mol	Chain	Res	Type	Atoms	Z	Observed(Å)	Ideal(Å)
6	1	1000	SPH	C1-C2	3.31	1.57	1.52

All (4) bond angle outliers are listed below:

Mol	Chain	Res	Type	Atoms	Z	Observed(°)	Ideal(°)
6	1	1000	SPH	O3-C3-C2	-5.12	99.19	107.31
6	1	1000	SPH	C1-C2-C3	4.37	122.42	113.03
6	1	1000	SPH	O3-C3-C4	-3.20	102.28	110.85
6	1	1000	SPH	C9-C8-C7	-2.32	102.67	114.42

All (1) chirality outliers are listed below:

Mol	Chain	Res	Type	Atom
6	1	1000	SPH	C3

5 of 8 torsion outliers are listed below:

Mol	Chain	Res	Type	Atoms
6	1	1000	SPH	C1-C2-C3-O3
6	1	1000	SPH	C1-C2-C3-C4
6	1	1000	SPH	N2-C2-C3-O3
6	1	1000	SPH	N2-C2-C3-C4
6	1	1000	SPH	C2-C3-C4-C5

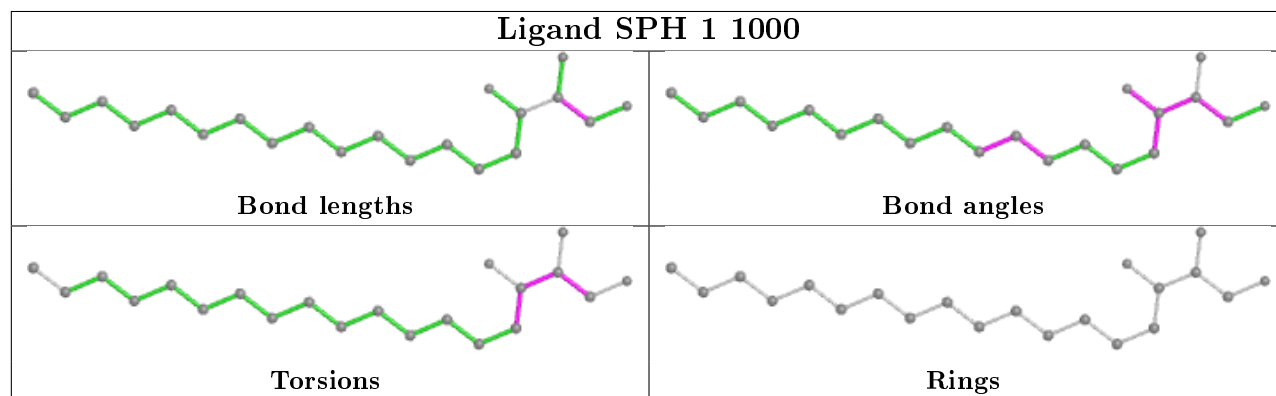
There are no ring outliers.

2 monomers are involved in 4 short contacts:

Mol	Chain	Res	Type	Clashes	Symm-Clashes
7	4	1	MYR	1	0
6	1	1000	SPH	3	0

The following is a two-dimensional graphical depiction of Mogul quality analysis of bond lengths, bond angles, torsion angles, and ring geometry for all instances of the Ligand of Interest. In addition, ligands with molecular weight > 250 and outliers as shown on the validation Tables will also be included. For torsion angles, if less than 5% of the Mogul distribution of torsion angles is within 10 degrees of the torsion angle in question, then that torsion angle is considered an outlier.

Any bond that is central to one or more torsion angles identified as an outlier by Mogul will be highlighted in the graph. For rings, the root-mean-square deviation (RMSD) between the ring in question and similar rings identified by Mogul is calculated over all ring torsion angles. If the average RMSD is greater than 60 degrees and the minimal RMSD between the ring in question and any Mogul-identified rings is also greater than 60 degrees, then that ring is considered an outlier. The outliers are highlighted in purple. The color gray indicates Mogul did not find sufficient equivalents in the CSD to analyse the geometry.



## 5.7 Other polymers [i](#)

There are no such residues in this entry.

## 5.8 Polymer linkage issues [i](#)

There are no chain breaks in this entry.

## 6 Fit of model and data

### 6.1 Protein, DNA and RNA chains

EDS was not executed - this section is therefore empty.

### 6.2 Non-standard residues in protein, DNA, RNA chains

EDS was not executed - this section is therefore empty.

### 6.3 Carbohydrates

EDS was not executed - this section is therefore empty.

### 6.4 Ligands

EDS was not executed - this section is therefore empty.

### 6.5 Other polymers

EDS was not executed - this section is therefore empty.