



Full wwPDB X-ray Structure Validation Report ⓘ

Jun 14, 2020 – 04:49 am BST

PDB ID : 1OUW
Title : Crystal structure of Calystegia sepium agglutinin
Authors : Bourne, Y.; Roig-Zamboni, V.; Barre, A.; Peumans, W.J.; Astoul, C.H.; van Damme, E.J.M.; Rouge, P.
Deposited on : 2003-03-25
Resolution : 1.37 Å(reported)

This is a Full wwPDB X-ray Structure Validation Report for a publicly released PDB entry.

We welcome your comments at validation@mail.wwpdb.org

A user guide is available at

<https://www.wwpdb.org/validation/2017/XrayValidationReportHelp>

with specific help available everywhere you see the ⓘ symbol.

The following versions of software and data (see [references ⓘ](#)) were used in the production of this report:

MolProbity : 4.02b-467
Mogul : 1.8.5 (274361), CSD as541be (2020)
Xtriage (Phenix) : 1.13
EDS : 2.11
Percentile statistics : 20191225.v01 (using entries in the PDB archive December 25th 2019)
Refmac : 5.8.0158
CCP4 : 7.0.044 (Gargrove)
Ideal geometry (proteins) : Engh & Huber (2001)
Ideal geometry (DNA, RNA) : Parkinson et al. (1996)
Validation Pipeline (wwPDB-VP) : 2.11

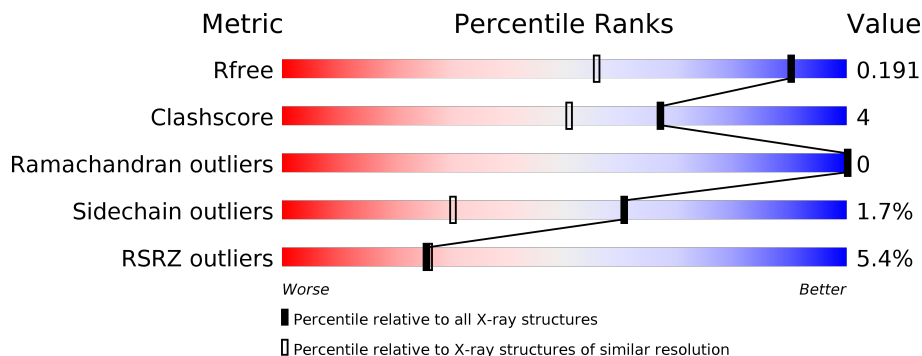
1 Overall quality at a glance

The following experimental techniques were used to determine the structure:

X-RAY DIFFRACTION

The reported resolution of this entry is 1.37 Å.

Percentile scores (ranging between 0-100) for global validation metrics of the entry are shown in the following graphic. The table shows the number of entries on which the scores are based.



Metric	Whole archive (#Entries)	Similar resolution (#Entries, resolution range(Å))
R_{free}	130704	2907 (1.40-1.36)
Clashscore	141614	3037 (1.40-1.36)
Ramachandran outliers	138981	2970 (1.40-1.36)
Sidechain outliers	138945	2969 (1.40-1.36)
RSRZ outliers	127900	2846 (1.40-1.36)

The table below summarises the geometric issues observed across the polymeric chains and their fit to the electron density. The red, orange, yellow and green segments on the lower bar indicate the fraction of residues that contain outliers for ≥ 3 , 2, 1 and 0 types of geometric quality criteria respectively. A grey segment represents the fraction of residues that are not modelled. The numeric value for each fraction is indicated below the corresponding segment, with a dot representing fractions $\leq 5\%$. The upper red bar (where present) indicates the fraction of residues that have poor fit to the electron density. The numeric value is given above the bar.

Mol	Chain	Length	Quality of chain
1	A	152	 6% 91% 7% •
1	B	152	 6% 91% 8% •
1	C	152	 6% 89% 11%
1	D	152	 3% 89% 9% ••

The following table lists non-polymeric compounds, carbohydrate monomers and non-standard residues in protein, DNA, RNA chains that are outliers for geometric or electron-density-fit crite-

ria:

Mol	Type	Chain	Res	Chirality	Geometry	Clashes	Electron density
1	AYA	B	2	-	X	-	-
4	MLT	C	502	X	-	-	-
4	MLT	D	501	X	-	-	-

2 Entry composition

There are 5 unique types of molecules in this entry. The entry contains 5125 atoms, of which 0 are hydrogens and 0 are deuteriums.

In the tables below, the ZeroOcc column contains the number of atoms modelled with zero occupancy, the AltConf column contains the number of residues with at least one atom in alternate conformation and the Trace column contains the number of residues modelled with at most 2 atoms.

- Molecule 1 is a protein called lectin.

Mol	Chain	Residues	Atoms					ZeroOcc	AltConf	Trace
			Total	C	N	O	S			
1	A	149	1111	701	187	221	2	0	3	0
1	B	150	1116	705	188	221	2	0	3	0
1	C	152	1120	706	189	223	2	0	1	0
1	D	151	1115	701	189	223	2	0	1	0

There are 4 discrepancies between the modelled and reference sequences:

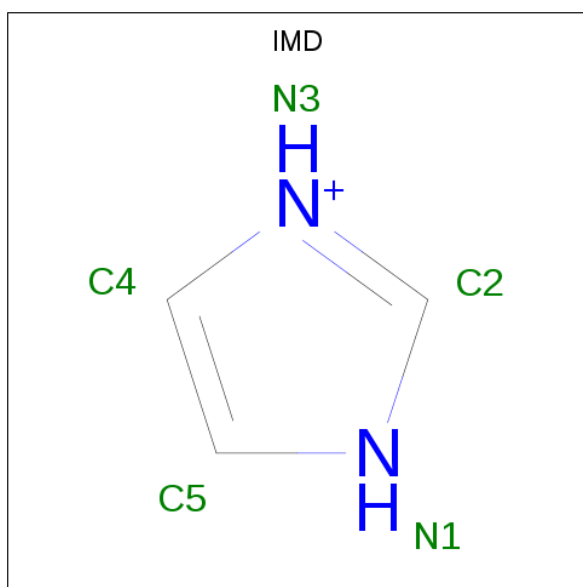
Chain	Residue	Modelled	Actual	Comment	Reference
A	2	AYA	ALA	MODIFIED RESIDUE	UNP P93114
B	2	AYA	ALA	MODIFIED RESIDUE	UNP P93114
C	2	AYA	ALA	MODIFIED RESIDUE	UNP P93114
D	2	AYA	ALA	MODIFIED RESIDUE	UNP P93114

- Molecule 2 is 1,2-ETHANEDIOL (three-letter code: EDO) (formula: C₂H₆O₂).



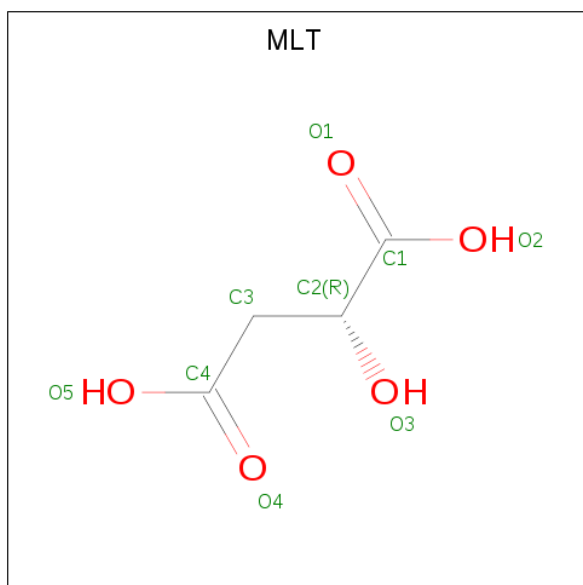
Mol	Chain	Residues	Atoms	ZeroOcc	AltConf
2	A	1	Total C O 4 2 2	0	0
2	A	1	Total C O 4 2 2	0	0
2	B	1	Total C O 4 2 2	0	0
2	B	1	Total C O 4 2 2	0	0
2	B	1	Total C O 4 2 2	0	0
2	C	1	Total C O 4 2 2	0	0
2	C	1	Total C O 4 2 2	0	0
2	D	1	Total C O 4 2 2	0	0
2	D	1	Total C O 4 2 2	0	0

- Molecule 3 is IMIDAZOLE (three-letter code: IMD) (formula: C₃H₅N₂).



Mol	Chain	Residues	Atoms	ZeroOcc	AltConf
3	A	1	Total C N 5 3 2	0	0
3	A	1	Total C N 5 3 2	0	0
3	B	1	Total C N 5 3 2	0	0
3	B	1	Total C N 5 3 2	0	0

- Molecule 4 is D-MALATE (three-letter code: MLT) (formula: C₄H₆O₅).



Mol	Chain	Residues	Atoms			ZeroOcc	AltConf
4	C	1	Total	C	O	0	0
			9	4	5		
4	D	1	Total	C	O	0	0
			9	4	5		

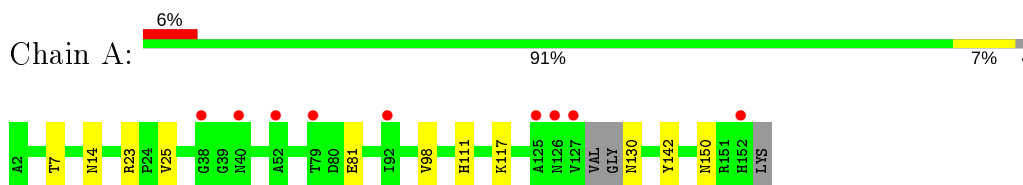
- Molecule 5 is water.

Mol	Chain	Residues	Atoms		ZeroOcc	AltConf
5	A	145	Total	O	0	0
			145	145		
5	B	152	Total	O	0	0
			152	152		
5	C	152	Total	O	0	0
			152	152		
5	D	140	Total	O	0	0
			140	140		

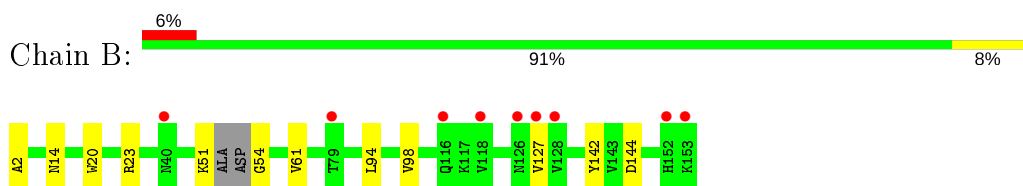
3 Residue-property plots [i](#)

These plots are drawn for all protein, RNA and DNA chains in the entry. The first graphic for a chain summarises the proportions of the various outlier classes displayed in the second graphic. The second graphic shows the sequence view annotated by issues in geometry and electron density. Residues are color-coded according to the number of geometric quality criteria for which they contain at least one outlier: green = 0, yellow = 1, orange = 2 and red = 3 or more. A red dot above a residue indicates a poor fit to the electron density ($RSRZ > 2$). Stretches of 2 or more consecutive residues without any outlier are shown as a green connector. Residues present in the sample, but not in the model, are shown in grey.

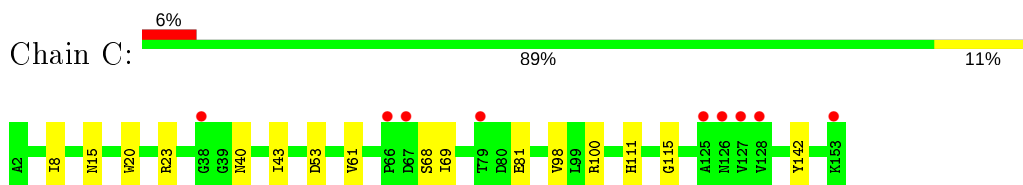
- Molecule 1: lectin



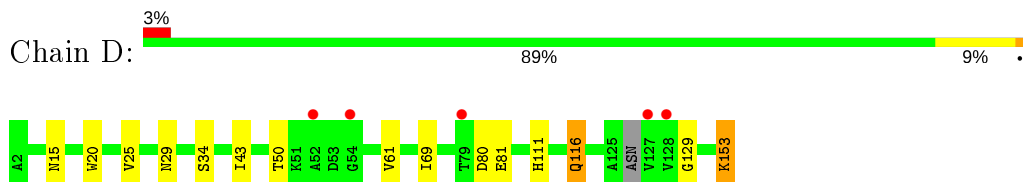
- Molecule 1: lectin



- Molecule 1: lectin



- Molecule 1: lectin



4 Data and refinement statistics

Property	Value	Source
Space group	P 1	Depositor
Cell constants a, b, c, α , β , γ	30.56 Å 51.79 Å 79.78 Å 104.99° 94.36° 94.85°	Depositor
Resolution (Å)	25.00 – 1.37 30.29 – 1.37	Depositor EDS
% Data completeness (in resolution range)	94.0 (25.00-1.37) 93.2 (30.29-1.37)	Depositor EDS
R_{merge}	(Not available)	Depositor
R_{sym}	0.02	Depositor
$\langle I/\sigma(I) \rangle$ ¹	4.04 (at 1.37 Å)	Xtrriage
Refinement program	REFMAC 5.1.24	Depositor
R, R_{free}	0.153 , 0.180 0.164 , 0.191	Depositor DCC
R_{free} test set	1827 reflections (1.99%)	wwPDB-VP
Wilson B-factor (Å ²)	13.1	Xtrriage
Anisotropy	0.580	Xtrriage
Bulk solvent k_{sol} (e/Å ³), B_{sol} (Å ²)	0.39 , 54.8	EDS
L-test for twinning ²	$\langle L \rangle = 0.50$, $\langle L^2 \rangle = 0.33$	Xtrriage
Estimated twinning fraction	No twinning to report.	Xtrriage
F_o, F_c correlation	0.97	EDS
Total number of atoms	5125	wwPDB-VP
Average B, all atoms (Å ²)	19.0	wwPDB-VP

Xtrriage's analysis on translational NCS is as follows: *The analyses of the Patterson function reveals a significant off-origin peak that is 21.39 % of the origin peak, indicating pseudo-translational symmetry. The chance of finding a peak of this or larger height randomly in a structure without pseudo-translational symmetry is equal to $7.0791e-03$. The detected translational NCS is most likely also responsible for the elevated intensity ratio.*

¹Intensities estimated from amplitudes.

²Theoretical values of $\langle |L| \rangle$, $\langle L^2 \rangle$ for acentric reflections are 0.5, 0.333 respectively for untwinned datasets, and 0.375, 0.2 for perfectly twinned datasets.

5 Model quality [i](#)

5.1 Standard geometry [i](#)

Bond lengths and bond angles in the following residue types are not validated in this section: AYA, IMD, MLT, EDO

The Z score for a bond length (or angle) is the number of standard deviations the observed value is removed from the expected value. A bond length (or angle) with $|Z| > 5$ is considered an outlier worth inspection. RMSZ is the root-mean-square of all Z scores of the bond lengths (or angles).

Mol	Chain	Bond lengths		Bond angles	
		RMSZ	# $ Z > 5$	RMSZ	# $ Z > 5$
1	A	0.53	0/1140	0.77	0/1550
1	B	0.52	0/1146	0.74	1/1557 (0.1%)
1	C	0.56	0/1141	0.79	3/1550 (0.2%)
1	D	0.48	0/1136	0.75	1/1542 (0.1%)
All	All	0.52	0/4563	0.76	5/6199 (0.1%)

There are no bond length outliers.

All (5) bond angle outliers are listed below:

Mol	Chain	Res	Type	Atoms	Z	Observed(°)	Ideal(°)
1	C	100	ARG	NE-CZ-NH1	6.83	123.72	120.30
1	C	53	ASP	CB-CG-OD2	6.29	123.96	118.30
1	C	100	ARG	NE-CZ-NH2	-6.17	117.22	120.30
1	D	80	ASP	CB-CG-OD2	5.48	123.24	118.30
1	B	144	ASP	CB-CG-OD2	5.38	123.15	118.30

There are no chirality outliers.

There are no planarity outliers.

5.2 Too-close contacts [i](#)

In the following table, the Non-H and H(model) columns list the number of non-hydrogen atoms and hydrogen atoms in the chain respectively. The H(added) column lists the number of hydrogen atoms added and optimized by MolProbity. The Clashes column lists the number of clashes within the asymmetric unit, whereas Symm-Clashes lists symmetry related clashes.

Mol	Chain	Non-H	H(model)	H(added)	Clashes	Symm-Clashes
1	A	1111	0	1059	7	0
1	B	1116	0	1055	10	0

Continued on next page...

Continued from previous page...

Mol	Chain	Non-H	H(model)	H(added)	Clashes	Symm-Clashes
1	C	1120	0	1069	7	0
1	D	1115	0	1056	11	0
2	A	8	0	12	0	0
2	B	12	0	18	0	0
2	C	8	0	12	0	0
2	D	8	0	12	1	0
3	A	10	0	10	0	0
3	B	10	0	10	0	0
4	C	9	0	4	0	0
4	D	9	0	4	0	0
5	A	145	0	0	4	0
5	B	152	0	0	5	1
5	C	152	0	0	2	0
5	D	140	0	0	1	0
All	All	5125	0	4321	35	1

The all-atom clashscore is defined as the number of clashes found per 1000 atoms (including hydrogen atoms). The all-atom clashscore for this structure is 4.

All (35) close contacts within the same asymmetric unit are listed below, sorted by their clash magnitude.

Atom-1	Atom-2	Interatomic distance (Å)	Clash overlap (Å)
1:D:43:ILE:HD11	1:D:69:ILE:HD13	1.48	0.92
1:B:51:LYS:C	5:B:1064:HOH:O	2.10	0.89
1:A:130:ASN:HD21	1:A:150:ASN:HB3	1.63	0.64
1:D:34:SER:HB3	1:D:69:ILE:HD12	1.80	0.64
1:C:8:ILE:HD12	2:D:517:EDO:H21	1.79	0.63
1:B:54:GLY:N	5:B:1165:HOH:O	2.32	0.63
1:A:7[B]:THR:HG23	5:A:873:HOH:O	2.00	0.61
1:C:81:GLU:OE2	1:C:111:HIS:HE1	1.84	0.60
1:D:81:GLU:OE2	1:D:111:HIS:HE1	1.87	0.57
1:A:81:GLU:OE2	1:A:111:HIS:HE1	1.89	0.56
1:A:111:HIS:HD2	5:A:711:HOH:O	1.88	0.56
5:C:855:HOH:O	1:D:25:VAL:HG12	2.07	0.54
1:D:43:ILE:HD11	1:D:69:ILE:CD1	2.29	0.54
1:A:14:ASN:OD1	5:A:1155:HOH:O	2.19	0.51
1:D:15:ASN:HB2	5:D:1039:HOH:O	2.10	0.50
1:B:127:VAL:O	5:B:1193:HOH:O	2.19	0.50
1:A:98:VAL:HG11	1:A:142:TYR:HB2	1.93	0.49
1:C:111:HIS:HD2	5:C:1013:HOH:O	1.96	0.48
1:D:29:ASN:HD21	1:D:50:THR:HG23	1.79	0.48

Continued on next page...

Continued from previous page...

Atom-1	Atom-2	Interatomic distance (Å)	Clash overlap (Å)
1:C:20:TRP:CD2	1:C:61:VAL:HG11	2.50	0.47
1:D:116:GLN:HA	1:D:116:GLN:HE21	1.80	0.46
1:C:40:ASN:O	1:C:115:GLY:HA2	2.16	0.46
1:B:94:LEU:HD12	1:B:142[A]:TYR:OH	2.15	0.45
1:D:29:ASN:HD21	1:D:50:THR:CG2	2.30	0.45
1:D:20:TRP:CD2	1:D:61:VAL:HG11	2.51	0.45
1:B:14:ASN:ND2	5:B:956:HOH:O	2.50	0.44
5:A:901:HOH:O	1:B:2:AYA:HM1	2.17	0.43
1:C:43:ILE:HD11	1:C:69:ILE:HG12	2.01	0.43
1:D:129:GLY:O	1:D:153:LYS:HG3	2.20	0.42
1:B:98:VAL:HG11	1:B:142[B]:TYR:CD1	2.55	0.42
1:B:98:VAL:HG11	1:B:142[A]:TYR:HB2	2.02	0.41
1:B:98:VAL:HG11	1:B:142[B]:TYR:HD1	1.86	0.41
1:A:25[A]:VAL:HG11	5:B:966:HOH:O	2.21	0.41
1:B:20:TRP:CD2	1:B:61:VAL:HG11	2.57	0.40
1:C:98:VAL:HG11	1:C:142:TYR:HB2	2.03	0.40

All (1) symmetry-related close contacts are listed below. The label for Atom-2 includes the symmetry operator and encoded unit-cell translations to be applied.

Atom-1	Atom-2	Interatomic distance (Å)	Clash overlap (Å)
5:B:951:HOH:O	5:B:952:HOH:O[1_655]	2.19	0.01

5.3 Torsion angles [i](#)

5.3.1 Protein backbone [i](#)

In the following table, the Percentiles column shows the percent Ramachandran outliers of the chain as a percentile score with respect to all X-ray entries followed by that with respect to entries of similar resolution.

The Analysed column shows the number of residues for which the backbone conformation was analysed, and the total number of residues.

Mol	Chain	Analysed	Favoured	Allowed	Outliers	Percentiles	
1	A	148/152 (97%)	146 (99%)	2 (1%)	0	100	100
1	B	149/152 (98%)	147 (99%)	2 (1%)	0	100	100
1	C	151/152 (99%)	150 (99%)	1 (1%)	0	100	100
1	D	148/152 (97%)	146 (99%)	2 (1%)	0	100	100

Continued on next page...

Continued from previous page...

Mol	Chain	Analysed	Favoured	Allowed	Outliers	Percentiles	
All	All	596/608 (98%)	589 (99%)	7 (1%)	0	100	100

There are no Ramachandran outliers to report.

5.3.2 Protein sidechains [i](#)

In the following table, the Percentiles column shows the percent sidechain outliers of the chain as a percentile score with respect to all X-ray entries followed by that with respect to entries of similar resolution.

The Analysed column shows the number of residues for which the sidechain conformation was analysed, and the total number of residues.

Mol	Chain	Analysed	Rotameric	Outliers	Percentiles	
1	A	119/120 (99%)	117 (98%)	2 (2%)	60	30
1	B	118/120 (98%)	117 (99%)	1 (1%)	81	61
1	C	117/120 (98%)	114 (97%)	3 (3%)	46	13
1	D	117/120 (98%)	115 (98%)	2 (2%)	60	30
All	All	471/480 (98%)	463 (98%)	8 (2%)	60	30

All (8) residues with a non-rotameric sidechain are listed below:

Mol	Chain	Res	Type
1	A	23	ARG
1	A	117	LYS
1	B	23	ARG
1	C	15	ASN
1	C	23	ARG
1	C	68	SER
1	D	116	GLN
1	D	153	LYS

Some sidechains can be flipped to improve hydrogen bonding and reduce clashes. All (11) such sidechains are listed below:

Mol	Chain	Res	Type
1	A	26	ASN
1	A	111	HIS
1	A	130	ASN
1	B	14	ASN

Continued on next page...

Continued from previous page...

Mol	Chain	Res	Type
1	C	15	ASN
1	C	26	ASN
1	C	30	GLN
1	C	111	HIS
1	D	15	ASN
1	D	111	HIS
1	D	116	GLN

5.3.3 RNA [i](#)

There are no RNA molecules in this entry.

5.4 Non-standard residues in protein, DNA, RNA chains [i](#)

4 non-standard protein/DNA/RNA residues are modelled in this entry.

In the following table, the Counts columns list the number of bonds (or angles) for which Mogul statistics could be retrieved, the number of bonds (or angles) that are observed in the model and the number of bonds (or angles) that are defined in the Chemical Component Dictionary. The Link column lists molecule types, if any, to which the group is linked. The Z score for a bond length (or angle) is the number of standard deviations the observed value is removed from the expected value. A bond length (or angle) with $|Z| > 2$ is considered an outlier worth inspection. RMSZ is the root-mean-square of all Z scores of the bond lengths (or angles).

Mol	Type	Chain	Res	Link	Bond lengths			Bond angles		
					Counts	RMSZ	# Z > 2	Counts	RMSZ	# Z > 2
1	AYA	D	2	1	6,7,8	1.33	1 (16%)	5,8,10	2.46	2 (40%)
1	AYA	C	2	1	6,7,8	1.25	1 (16%)	5,8,10	3.10	4 (80%)
1	AYA	B	2	1	6,7,8	1.55	2 (33%)	5,8,10	4.09	4 (80%)
1	AYA	A	2	1	6,7,8	1.49	1 (16%)	5,8,10	3.17	3 (60%)

In the following table, the Chirals column lists the number of chiral outliers, the number of chiral centers analysed, the number of these observed in the model and the number defined in the Chemical Component Dictionary. Similar counts are reported in the Torsion and Rings columns. '-' means no outliers of that kind were identified.

Mol	Type	Chain	Res	Link	Chirals	Torsions	Rings
1	AYA	D	2	1	-	2/4/6/8	-
1	AYA	C	2	1	-	1/4/6/8	-
1	AYA	B	2	1	-	3/4/6/8	-

Continued on next page...

Continued from previous page...

Mol	Type	Chain	Res	Link	Chirals	Torsions	Rings
1	AYA	A	2	1	-	3/4/6/8	-

All (5) bond length outliers are listed below:

Mol	Chain	Res	Type	Atoms	Z	Observed(Å)	Ideal(Å)
1	D	2	AYA	O-C	2.57	1.30	1.19
1	B	2	AYA	CA-N	2.57	1.49	1.46
1	A	2	AYA	O-C	2.53	1.30	1.19
1	C	2	AYA	O-C	2.46	1.29	1.19
1	B	2	AYA	O-C	2.42	1.29	1.19

All (13) bond angle outliers are listed below:

Mol	Chain	Res	Type	Atoms	Z	Observed(°)	Ideal(°)
1	B	2	AYA	OT-CT-CM	-5.67	111.53	122.06
1	B	2	AYA	OT-CT-N	-5.07	112.62	121.95
1	A	2	AYA	CM-CT-N	-4.38	108.68	116.10
1	A	2	AYA	OT-CT-CM	-4.17	114.32	122.06
1	C	2	AYA	OT-CT-CM	-4.04	114.56	122.06
1	B	2	AYA	CA-N-CT	3.92	127.22	121.52
1	C	2	AYA	CM-CT-N	-3.63	109.95	116.10
1	D	2	AYA	OT-CT-CM	-3.56	115.45	122.06
1	C	2	AYA	CB-CA-N	3.40	113.39	109.61
1	A	2	AYA	OT-CT-N	-3.30	115.88	121.95
1	D	2	AYA	OT-CT-N	-3.23	116.01	121.95
1	B	2	AYA	CB-CA-N	3.20	113.17	109.61
1	C	2	AYA	OT-CT-N	-2.26	117.80	121.95

There are no chirality outliers.

All (9) torsion outliers are listed below:

Mol	Chain	Res	Type	Atoms
1	B	2	AYA	OT-CT-N-CA
1	B	2	AYA	CM-CT-N-CA
1	A	2	AYA	CM-CT-N-CA
1	A	2	AYA	OT-CT-N-CA
1	C	2	AYA	OT-CT-N-CA
1	B	2	AYA	C-CA-N-CT
1	D	2	AYA	OT-CT-N-CA
1	D	2	AYA	CM-CT-N-CA
1	A	2	AYA	C-CA-N-CT

There are no ring outliers.

1 monomer is involved in 1 short contact:

Mol	Chain	Res	Type	Clashes	Symm-Clashes
1	B	2	AYA	1	0

5.5 Carbohydrates [i](#)

There are no carbohydrates in this entry.

5.6 Ligand geometry [i](#)

15 ligands are modelled in this entry.

In the following table, the Counts columns list the number of bonds (or angles) for which Mogul statistics could be retrieved, the number of bonds (or angles) that are observed in the model and the number of bonds (or angles) that are defined in the Chemical Component Dictionary. The Link column lists molecule types, if any, to which the group is linked. The Z score for a bond length (or angle) is the number of standard deviations the observed value is removed from the expected value. A bond length (or angle) with $|Z| > 2$ is considered an outlier worth inspection. RMSZ is the root-mean-square of all Z scores of the bond lengths (or angles).

Mol	Type	Chain	Res	Link	Bond lengths			Bond angles		
					Counts	RMSZ	$\# Z > 2$	Counts	RMSZ	$\# Z > 2$
3	IMD	B	520	-	3,5,5	0.36	0	4,5,5	0.56	0
2	EDO	A	515	-	3,3,3	0.29	0	2,2,2	0.11	0
2	EDO	B	514	-	3,3,3	0.25	0	2,2,2	0.46	0
3	IMD	A	523	-	3,5,5	0.40	0	4,5,5	0.58	0
3	IMD	B	522	-	3,5,5	0.36	0	4,5,5	0.54	0
2	EDO	B	513	-	3,3,3	0.28	0	2,2,2	0.61	0
2	EDO	D	512	-	3,3,3	0.36	0	2,2,2	0.40	0
2	EDO	D	517	-	3,3,3	0.25	0	2,2,2	0.76	0
3	IMD	A	521	-	3,5,5	0.37	0	4,5,5	0.62	0
2	EDO	C	518	-	3,3,3	0.36	0	2,2,2	0.24	0
4	MLT	D	501	-	2,8,8	0.46	0	3,10,10	0.56	0
2	EDO	B	516	-	3,3,3	0.38	0	2,2,2	0.42	0
2	EDO	A	510	-	3,3,3	0.31	0	2,2,2	0.57	0
4	MLT	C	502	-	2,8,8	0.51	0	3,10,10	0.49	0
2	EDO	C	511	-	3,3,3	0.38	0	2,2,2	0.31	0

In the following table, the Chirals column lists the number of chiral outliers, the number of chiral centers analysed, the number of these observed in the model and the number defined in the Chemical Component Dictionary. Similar counts are reported in the Torsion and Rings columns. '-' means no outliers of that kind were identified.

Mol	Type	Chain	Res	Link	Chirals	Torsions	Rings
3	IMD	B	520	-	-	-	0/1/1/1
2	EDO	A	515	-	-	1/1/1/1	-
2	EDO	B	514	-	-	0/1/1/1	-
3	IMD	A	523	-	-	-	0/1/1/1
2	EDO	D	517	-	-	0/1/1/1	-
3	IMD	B	522	-	-	-	0/1/1/1
2	EDO	B	513	-	-	0/1/1/1	-
2	EDO	D	512	-	-	0/1/1/1	-
2	EDO	C	518	-	-	0/1/1/1	-
3	IMD	A	521	-	-	-	0/1/1/1
4	MLT	D	501	-	1/1/3/3	0/2/8/8	-
2	EDO	B	516	-	-	0/1/1/1	-
2	EDO	A	510	-	-	0/1/1/1	-
4	MLT	C	502	-	1/1/3/3	0/2/8/8	-
2	EDO	C	511	-	-	0/1/1/1	-

There are no bond length outliers.

There are no bond angle outliers.

All (2) chirality outliers are listed below:

Mol	Chain	Res	Type	Atom
4	D	501	MLT	C2
4	C	502	MLT	C2

All (1) torsion outliers are listed below:

Mol	Chain	Res	Type	Atoms
2	A	515	EDO	O1-C1-C2-O2

There are no ring outliers.

1 monomer is involved in 1 short contact:

Mol	Chain	Res	Type	Clashes	Symm-Clashes
2	D	517	EDO	1	0

5.7 Other polymers [i](#)

There are no such residues in this entry.

5.8 Polymer linkage issues

There are no chain breaks in this entry.

6 Fit of model and data

6.1 Protein, DNA and RNA chains

In the following table, the column labelled ‘#RSRZ> 2’ contains the number (and percentage) of RSRZ outliers, followed by percent RSRZ outliers for the chain as percentile scores relative to all X-ray entries and entries of similar resolution. The OWAB column contains the minimum, median, 95th percentile and maximum values of the occupancy-weighted average B-factor per residue. The column labelled ‘Q< 0.9’ lists the number of (and percentage) of residues with an average occupancy less than 0.9.

Mol	Chain	Analysed	<RSRZ>	#RSRZ>2	OWAB(Å ²)	Q<0.9
1	A	148/152 (97%)	0.22	9 (6%) 21 21	10, 15, 26, 37	0
1	B	149/152 (98%)	0.30	9 (6%) 21 21	10, 16, 28, 36	0
1	C	151/152 (99%)	0.32	9 (5%) 21 21	10, 15, 29, 36	0
1	D	150/152 (98%)	0.29	5 (3%) 46 48	10, 18, 29, 37	0
All	All	598/608 (98%)	0.28	32 (5%) 25 26	10, 16, 29, 37	0

All (32) RSRZ outliers are listed below:

Mol	Chain	Res	Type	RSRZ
1	C	127	VAL	8.2
1	B	128	VAL	7.0
1	B	127	VAL	5.8
1	A	127	VAL	5.8
1	C	126	ASN	5.6
1	C	38	GLY	5.3
1	C	128	VAL	5.2
1	D	127	VAL	5.0
1	D	128	VAL	4.8
1	A	126	ASN	4.5
1	C	79	THR	4.2
1	C	66	PRO	3.9
1	D	52	ALA	3.9
1	B	126	ASN	3.8
1	B	79	THR	3.8
1	B	40	ASN	3.5
1	A	152	HIS	3.5
1	B	152	HIS	3.2
1	A	40	ASN	3.0
1	C	125	ALA	2.9
1	C	67	ASP	2.8

Continued on next page...

Continued from previous page...

Mol	Chain	Res	Type	RSRZ
1	B	118	VAL	2.8
1	D	54	GLY	2.8
1	C	153	LYS	2.6
1	D	79	THR	2.6
1	B	116	GLN	2.5
1	A	125	ALA	2.5
1	A	79	THR	2.4
1	A	38	GLY	2.3
1	A	52	ALA	2.2
1	B	153	LYS	2.1
1	A	92	ILE	2.1

6.2 Non-standard residues in protein, DNA, RNA chains [i](#)

In the following table, the Atoms column lists the number of modelled atoms in the group and the number defined in the chemical component dictionary. The B-factors column lists the minimum, median, 95th percentile and maximum values of B factors of atoms in the group. The column labelled 'Q< 0.9' lists the number of atoms with occupancy less than 0.9.

Mol	Type	Chain	Res	Atoms	RSCC	RSR	B-factors(Å ²)	Q<0.9
1	AYA	B	2	8/9	0.79	0.15	21,24,26,33	0
1	AYA	A	2	8/9	0.86	0.12	19,21,23,26	0
1	AYA	C	2	8/9	0.91	0.10	20,23,27,28	0
1	AYA	D	2	8/9	0.93	0.09	17,18,19,20	0

6.3 Carbohydrates [i](#)

There are no carbohydrates in this entry.

6.4 Ligands [i](#)

In the following table, the Atoms column lists the number of modelled atoms in the group and the number defined in the chemical component dictionary. The B-factors column lists the minimum, median, 95th percentile and maximum values of B factors of atoms in the group. The column labelled 'Q< 0.9' lists the number of atoms with occupancy less than 0.9.

Mol	Type	Chain	Res	Atoms	RSCC	RSR	B-factors(Å ²)	Q<0.9
2	EDO	D	517	4/4	0.77	0.14	33,36,38,40	0
3	IMD	A	523	5/5	0.80	0.20	39,39,39,40	0
3	IMD	B	522	5/5	0.82	0.18	33,33,34,34	0

Continued on next page...

Continued from previous page...

Mol	Type	Chain	Res	Atoms	RSCC	RSR	B-factors(\AA^2)	Q<0.9
3	IMD	B	520	5/5	0.83	0.10	24,24,25,26	0
2	EDO	B	514	4/4	0.85	0.12	28,29,29,29	0
2	EDO	B	516	4/4	0.88	0.16	16,25,26,26	0
2	EDO	C	518	4/4	0.90	0.11	21,26,28,31	0
2	EDO	A	515	4/4	0.91	0.17	31,32,34,35	0
4	MLT	D	501	9/9	0.93	0.11	19,20,21,23	0
3	IMD	A	521	5/5	0.93	0.14	30,30,31,31	0
4	MLT	C	502	9/9	0.93	0.14	20,21,23,25	0
2	EDO	A	510	4/4	0.94	0.08	19,23,25,25	0
2	EDO	B	513	4/4	0.94	0.11	19,24,24,25	0
2	EDO	D	512	4/4	0.97	0.06	16,17,17,17	0
2	EDO	C	511	4/4	0.98	0.05	15,15,16,17	0

6.5 Other polymers [i](#)

There are no such residues in this entry.