



wwPDB X-ray Structure Validation Summary Report ⓘ

Aug 7, 2023 – 06:24 AM EDT

PDB ID : 1N8P
Title : Crystal Structure of cystathionine gamma-lyase from yeast
Authors : Messerschmidt, A.; Worbs, M.; Steegborn, C.; Wahl, M.C.; Huber, R.; Clausen, T.
Deposited on : 2002-11-21
Resolution : 2.60 Å(reported)

This is a wwPDB X-ray Structure Validation Summary Report for a publicly released PDB entry.

We welcome your comments at validation@mail.wwpdb.org

A user guide is available at

<https://www.wwpdb.org/validation/2017/XrayValidationReportHelp>

with specific help available everywhere you see the ⓘ symbol.

The types of validation reports are described at

<http://www.wwpdb.org/validation/2017/FAQs#types>.

The following versions of software and data (see [references ⓘ](#)) were used in the production of this report:

MolProbity : 4.02b-467
Mogul : 1.8.5 (274361), CSD as541be (2020)
Xtriage (Phenix) : 1.13
EDS : 2.35
Percentile statistics : 20191225.v01 (using entries in the PDB archive December 25th 2019)
Refmac : 5.8.0158
CCP4 : 7.0.044 (Gargrove)
Ideal geometry (proteins) : Engh & Huber (2001)
Ideal geometry (DNA, RNA) : Parkinson et al. (1996)
Validation Pipeline (wwPDB-VP) : 2.35

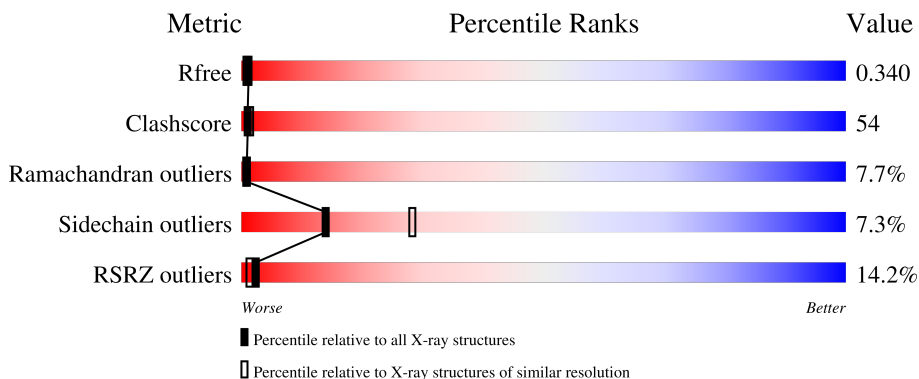
1 Overall quality at a glance

The following experimental techniques were used to determine the structure:

X-RAY DIFFRACTION

The reported resolution of this entry is 2.60 Å.

Percentile scores (ranging between 0-100) for global validation metrics of the entry are shown in the following graphic. The table shows the number of entries on which the scores are based.



Metric	Whole archive (#Entries)	Similar resolution (#Entries, resolution range(Å))
R_{free}	130704	3163 (2.60-2.60)
Clashscore	141614	3518 (2.60-2.60)
Ramachandran outliers	138981	3455 (2.60-2.60)
Sidechain outliers	138945	3455 (2.60-2.60)
RSRZ outliers	127900	3104 (2.60-2.60)

The table below summarises the geometric issues observed across the polymeric chains and their fit to the electron density. The red, orange, yellow and green segments of the lower bar indicate the fraction of residues that contain outliers for ≥ 3 , 2, 1 and 0 types of geometric quality criteria respectively. A grey segment represents the fraction of residues that are not modelled. The numeric value for each fraction is indicated below the corresponding segment, with a dot representing fractions $\leq 5\%$. The upper red bar (where present) indicates the fraction of residues that have poor fit to the electron density. The numeric value is given above the bar.

Mol	Chain	Length	Quality of chain
1	A	393	
1	B	393	
1	C	393	
1	D	393	

2 Entry composition [i](#)

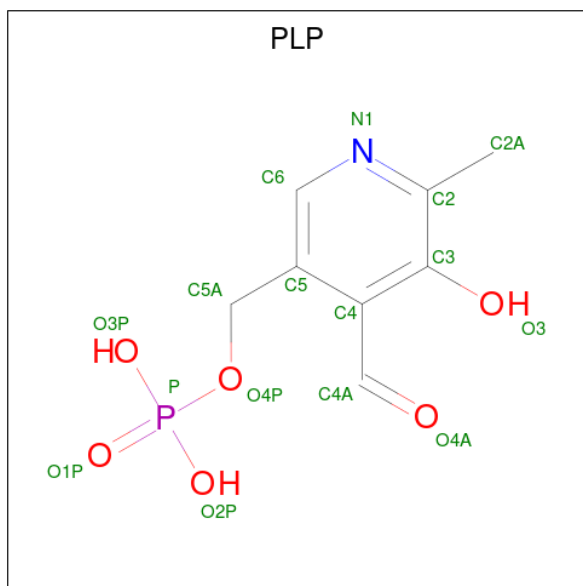
There are 3 unique types of molecules in this entry. The entry contains 12287 atoms, of which 0 are hydrogens and 0 are deuteriums.

In the tables below, the ZeroOcc column contains the number of atoms modelled with zero occupancy, the AltConf column contains the number of residues with at least one atom in alternate conformation and the Trace column contains the number of residues modelled with at most 2 atoms.

- Molecule 1 is a protein called Cystathionine gamma-lyase.

Mol	Chain	Residues	Atoms					ZeroOcc	AltConf	Trace
			Total	C	N	O	S			
1	A	393	Total 2969	C 1871	N 518	O 578	S 2	0	0	0
1	B	393	Total 2969	C 1871	N 518	O 578	S 2	0	0	0
1	C	393	Total 2969	C 1871	N 518	O 578	S 2	0	0	0
1	D	393	Total 2969	C 1871	N 518	O 578	S 2	0	0	0

- Molecule 2 is PYRIDOXAL-5'-PHOSPHATE (three-letter code: PLP) (formula: C₈H₁₀NO₆P).



Mol	Chain	Residues	Atoms					ZeroOcc	AltConf
			Total	C	N	O	P		
2	A	1	Total 15	C 8	N 1	O 5	P 1	0	0
2	B	1	Total 15	C 8	N 1	O 5	P 1	0	0

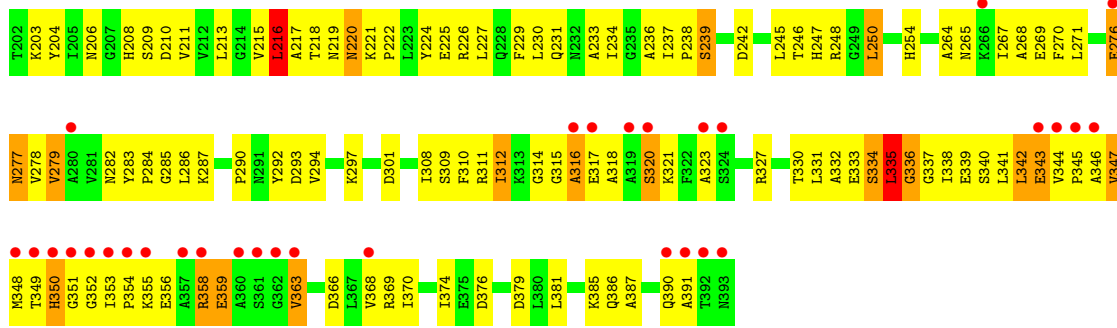
Continued on next page...

Continued from previous page...

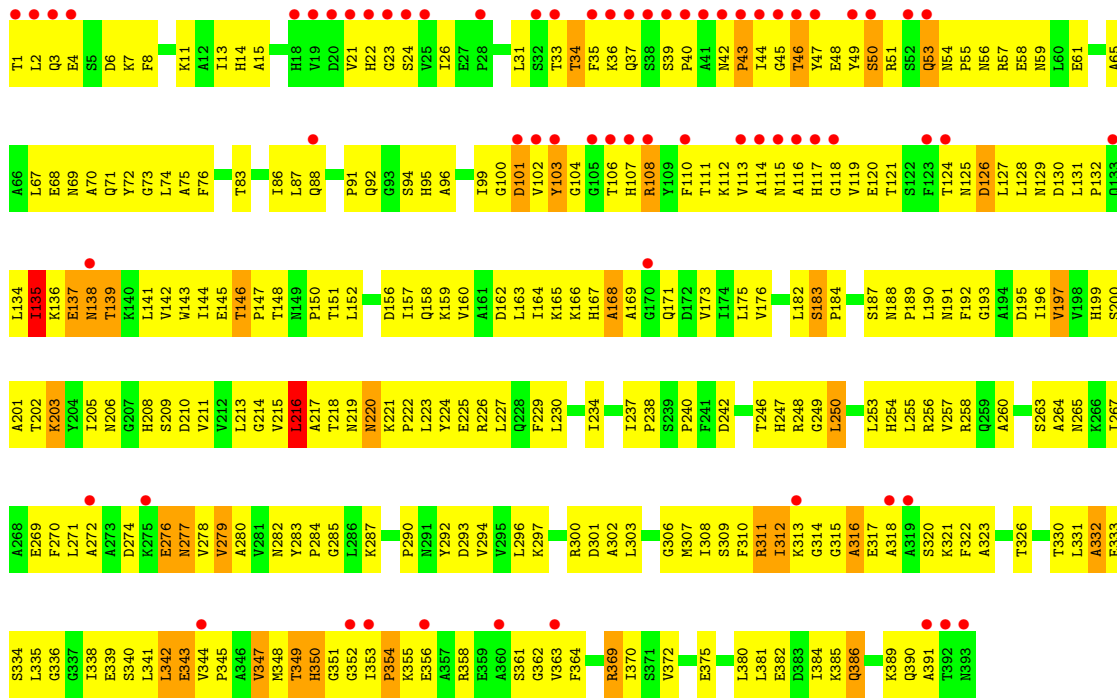
Mol	Chain	Residues	Atoms					ZeroOcc	AltConf
2	C	1	Total	C	N	O	P	0	0
			15	8	1	5	1		
2	D	1	Total	C	N	O	P	0	0
			15	8	1	5	1		

- Molecule 3 is water.

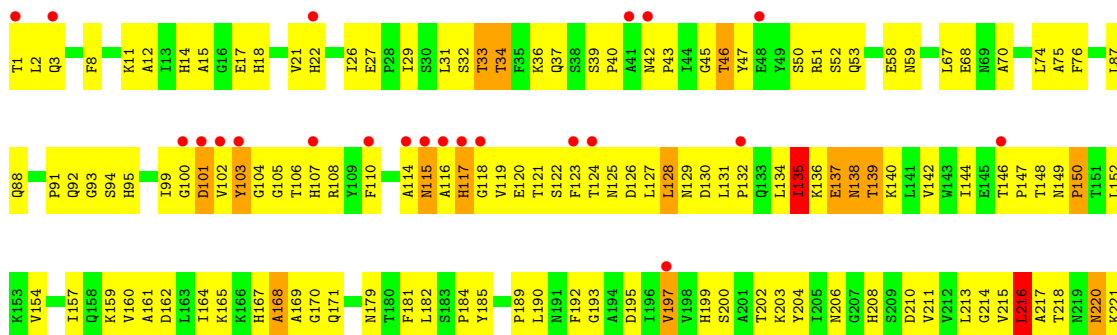
Mol	Chain	Residues	Atoms		ZeroOcc	AltConf
3	A	74	Total	O	0	0
			74	74		
3	B	94	Total	O	0	0
			94	94		
3	C	95	Total	O	0	0
			95	95		
3	D	88	Total	O	0	0
			88	88		

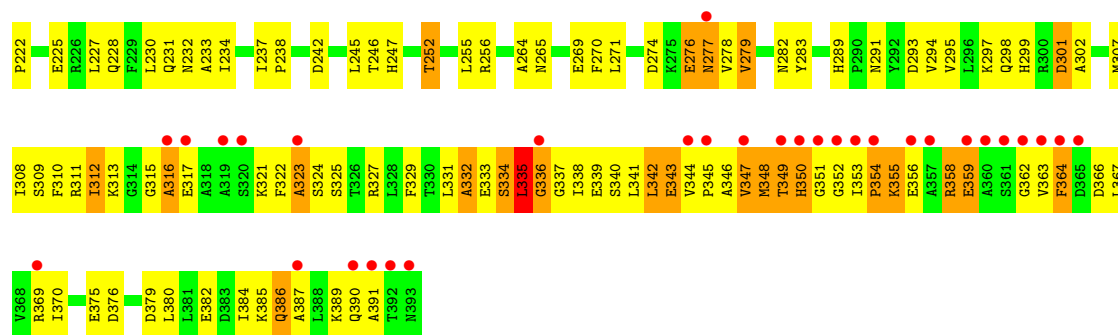


• Molecule 1: Cystathionine gamma-lyase



• Molecule 1: Cystathionine gamma-lyase





4 Data and refinement statistics

Property	Value	Source
Space group	C 1 2 1	Depositor
Cell constants a, b, c, α , β , γ	153.82Å 62.16Å 160.84Å 90.00° 105.42° 90.00°	Depositor
Resolution (Å)	6.00 – 2.60 19.90 – 2.60	Depositor EDS
% Data completeness (in resolution range)	97.1 (6.00-2.60) 98.9 (19.90-2.60)	Depositor EDS
R_{merge}	0.05	Depositor
R_{sym}	0.05	Depositor
$\langle I/\sigma(I) \rangle$ ¹	1.21 (at 2.59Å)	Xtrriage
Refinement program	CNS 1.1	Depositor
R, R_{free}	0.253 , 0.346 0.261 , 0.340	Depositor DCC
R_{free} test set	2253 reflections (5.01%)	wwPDB-VP
Wilson B-factor (Å ²)	54.6	Xtrriage
Anisotropy	0.556	Xtrriage
Bulk solvent k_{sol} (e/Å ³), B_{sol} (Å ²)	0.30 , 72.4	EDS
L-test for twinning ²	$\langle L \rangle = 0.49$, $\langle L^2 \rangle = 0.32$	Xtrriage
Estimated twinning fraction	No twinning to report.	Xtrriage
F_o, F_c correlation	0.90	EDS
Total number of atoms	12287	wwPDB-VP
Average B, all atoms (Å ²)	51.0	wwPDB-VP

Xtrriage's analysis on translational NCS is as follows: *The largest off-origin peak in the Patterson function is 4.84% of the height of the origin peak. No significant pseudotranslation is detected.*

¹Intensities estimated from amplitudes.

²Theoretical values of $\langle |L| \rangle$, $\langle L^2 \rangle$ for acentric reflections are 0.5, 0.333 respectively for untwinned datasets, and 0.375, 0.2 for perfectly twinned datasets.

5 Model quality [i](#)

5.1 Standard geometry [i](#)

Bond lengths and bond angles in the following residue types are not validated in this section: PLP

The Z score for a bond length (or angle) is the number of standard deviations the observed value is removed from the expected value. A bond length (or angle) with $|Z| > 5$ is considered an outlier worth inspection. RMSZ is the root-mean-square of all Z scores of the bond lengths (or angles).

Mol	Chain	Bond lengths		Bond angles	
		RMSZ	# Z >5	RMSZ	# Z >5
1	A	0.54	0/3026	0.80	3/4121 (0.1%)
1	B	0.52	0/3026	0.80	5/4121 (0.1%)
1	C	0.50	0/3026	0.78	2/4121 (0.0%)
1	D	0.56	0/3026	0.79	2/4121 (0.0%)
All	All	0.53	0/12104	0.79	12/16484 (0.1%)

There are no bond length outliers.

The worst 5 of 12 bond angle outliers are listed below:

Mol	Chain	Res	Type	Atoms	Z	Observed(°)	Ideal(°)
1	B	216	LEU	CA-CB-CG	8.30	134.38	115.30
1	A	216	LEU	CA-CB-CG	6.59	130.45	115.30
1	B	200	SER	N-CA-C	-6.49	93.47	111.00
1	D	216	LEU	CA-CB-CG	6.44	130.11	115.30
1	D	200	SER	N-CA-C	-6.33	93.89	111.00

There are no chirality outliers.

There are no planarity outliers.

5.2 Too-close contacts [i](#)

In the following table, the Non-H and H(model) columns list the number of non-hydrogen atoms and hydrogen atoms in the chain respectively. The H(added) column lists the number of hydrogen atoms added and optimized by MolProbity. The Clashes column lists the number of clashes within the asymmetric unit, whereas Symm-Clashes lists symmetry-related clashes.

Mol	Chain	Non-H	H(model)	H(added)	Clashes	Symm-Clashes
1	A	2969	0	2939	345	0
1	B	2969	0	2939	323	0

Continued on next page...

Continued from previous page...

Mol	Chain	Non-H	H(model)	H(added)	Clashes	Symm-Clashes
1	C	2969	0	2939	373	0
1	D	2969	0	2939	333	0
2	A	15	0	6	0	0
2	B	15	0	6	1	0
2	C	15	0	6	0	0
2	D	15	0	6	0	0
3	A	74	0	0	3	0
3	B	94	0	0	20	0
3	C	95	0	0	17	0
3	D	88	0	0	18	0
All	All	12287	0	11780	1281	0

The all-atom clashscore is defined as the number of clashes found per 1000 atoms (including hydrogen atoms). The all-atom clashscore for this structure is 54.

The worst 5 of 1281 close contacts within the same asymmetric unit are listed below, sorted by their clash magnitude.

Atom-1	Atom-2	Interatomic distance (Å)	Clash overlap (Å)
1:B:321:LYS:HG2	1:B:391:ALA:HA	1.21	1.20
1:C:321:LYS:HG2	1:C:391:ALA:HA	1.28	1.16
1:A:36:LYS:H	1:C:23:GLY:HA3	1.17	1.09
1:D:321:LYS:HG2	1:D:391:ALA:HA	1.35	1.08
1:C:95:HIS:ND1	1:C:139:THR:HG22	1.69	1.08

There are no symmetry-related clashes.

5.3 Torsion angles [i](#)

5.3.1 Protein backbone [i](#)

In the following table, the Percentiles column shows the percent Ramachandran outliers of the chain as a percentile score with respect to all X-ray entries followed by that with respect to entries of similar resolution.

The Analysed column shows the number of residues for which the backbone conformation was analysed, and the total number of residues.

Mol	Chain	Analysed	Favoured	Allowed	Outliers	Percentiles
1	A	391/393 (100%)	304 (78%)	63 (16%)	24 (6%)	1 1
1	B	391/393 (100%)	294 (75%)	63 (16%)	34 (9%)	1 0

Continued on next page...

Continued from previous page...

Mol	Chain	Analysed	Favoured	Allowed	Outliers	Percentiles	
1	C	391/393 (100%)	310 (79%)	51 (13%)	30 (8%)	1	1
1	D	391/393 (100%)	302 (77%)	57 (15%)	32 (8%)	1	1
All	All	1564/1572 (100%)	1210 (77%)	234 (15%)	120 (8%)	1	1

5 of 120 Ramachandran outliers are listed below:

Mol	Chain	Res	Type
1	A	43	PRO
1	A	46	THR
1	A	135	ILE
1	A	137	GLU
1	A	138	ASN

5.3.2 Protein sidechains [i](#)

In the following table, the Percentiles column shows the percent sidechain outliers of the chain as a percentile score with respect to all X-ray entries followed by that with respect to entries of similar resolution.

The Analysed column shows the number of residues for which the sidechain conformation was analysed, and the total number of residues.

Mol	Chain	Analysed	Rotameric	Outliers	Percentiles	
1	A	318/324 (98%)	295 (93%)	23 (7%)	14	29
1	B	318/324 (98%)	288 (91%)	30 (9%)	8	17
1	C	318/324 (98%)	297 (93%)	21 (7%)	16	33
1	D	318/324 (98%)	299 (94%)	19 (6%)	19	39
All	All	1272/1296 (98%)	1179 (93%)	93 (7%)	14	28

5 of 93 residues with a non-rotameric sidechain are listed below:

Mol	Chain	Res	Type
1	C	139	THR
1	C	343	GLU
1	C	216	LEU
1	C	290	PRO
1	D	34	THR

Sometimes sidechains can be flipped to improve hydrogen bonding and reduce clashes. 5 of 60 such sidechains are listed below:

Mol	Chain	Res	Type
1	C	53	GLN
1	D	277	ASN
1	C	191	ASN
1	D	254	HIS
1	D	350	HIS

5.3.3 RNA [i](#)

There are no RNA molecules in this entry.

5.4 Non-standard residues in protein, DNA, RNA chains [i](#)

There are no non-standard protein/DNA/RNA residues in this entry.

5.5 Carbohydrates [i](#)

There are no monosaccharides in this entry.

5.6 Ligand geometry [i](#)

4 ligands are modelled in this entry.

In the following table, the Counts columns list the number of bonds (or angles) for which Mogul statistics could be retrieved, the number of bonds (or angles) that are observed in the model and the number of bonds (or angles) that are defined in the Chemical Component Dictionary. The Link column lists molecule types, if any, to which the group is linked. The Z score for a bond length (or angle) is the number of standard deviations the observed value is removed from the expected value. A bond length (or angle) with $|Z| > 2$ is considered an outlier worth inspection. RMSZ is the root-mean-square of all Z scores of the bond lengths (or angles).

Mol	Type	Chain	Res	Link	Bond lengths			Bond angles		
					Counts	RMSZ	# $ Z > 2$	Counts	RMSZ	# $ Z > 2$
2	PLP	B	400	1	15,15,16	3.71	6 (40%)	20,22,23	2.59	7 (35%)
2	PLP	A	400	1	15,15,16	3.37	4 (26%)	20,22,23	2.45	8 (40%)
2	PLP	C	400	1	15,15,16	3.46	4 (26%)	20,22,23	2.63	9 (45%)
2	PLP	D	400	1	15,15,16	3.74	7 (46%)	20,22,23	2.51	9 (45%)

In the following table, the Chirals column lists the number of chiral outliers, the number of chiral centers analysed, the number of these observed in the model and the number defined in the Chemical Component Dictionary. Similar counts are reported in the Torsion and Rings columns. '-' means no outliers of that kind were identified.

Mol	Type	Chain	Res	Link	Chirals	Torsions	Rings
2	PLP	B	400	1	-	1/6/6/8	0/1/1/1
2	PLP	A	400	1	-	2/6/6/8	0/1/1/1
2	PLP	C	400	1	-	1/6/6/8	0/1/1/1
2	PLP	D	400	1	-	0/6/6/8	0/1/1/1

The worst 5 of 21 bond length outliers are listed below:

Mol	Chain	Res	Type	Atoms	Z	Observed(Å)	Ideal(Å)
2	D	400	PLP	C5-C4	10.95	1.52	1.40
2	B	400	PLP	C5-C4	10.19	1.51	1.40
2	C	400	PLP	C3-C2	9.05	1.50	1.40
2	A	400	PLP	C3-C2	8.76	1.49	1.40
2	B	400	PLP	C3-C2	8.30	1.49	1.40

The worst 5 of 33 bond angle outliers are listed below:

Mol	Chain	Res	Type	Atoms	Z	Observed(°)	Ideal(°)
2	B	400	PLP	C2A-C2-C3	7.84	130.57	120.89
2	C	400	PLP	C2A-C2-C3	6.58	129.01	120.89
2	A	400	PLP	C2A-C2-C3	6.23	128.59	120.89
2	D	400	PLP	C2A-C2-C3	6.08	128.40	120.89
2	B	400	PLP	C6-N1-C2	4.04	126.65	119.17

There are no chirality outliers.

All (4) torsion outliers are listed below:

Mol	Chain	Res	Type	Atoms
2	B	400	PLP	C4-C5-C5A-O4P
2	A	400	PLP	C6-C5-C5A-O4P
2	A	400	PLP	C4-C5-C5A-O4P
2	C	400	PLP	C4-C5-C5A-O4P

There are no ring outliers.

1 monomer is involved in 1 short contact:

Mol	Chain	Res	Type	Clashes	Symm-Clashes
2	B	400	PLP	1	0

5.7 Other polymers [i](#)

There are no such residues in this entry.

5.8 Polymer linkage issues

There are no chain breaks in this entry.

6 Fit of model and data [i](#)

6.1 Protein, DNA and RNA chains [i](#)

In the following table, the column labelled ‘#RSRZ> 2’ contains the number (and percentage) of RSRZ outliers, followed by percent RSRZ outliers for the chain as percentile scores relative to all X-ray entries and entries of similar resolution. The OWAB column contains the minimum, median, 95th percentile and maximum values of the occupancy-weighted average B-factor per residue. The column labelled ‘Q< 0.9’ lists the number of (and percentage) of residues with an average occupancy less than 0.9.

Mol	Chain	Analysed	<RSRZ>	#RSRZ>2	OWAB(Å ²)	Q<0.9
1	A	393/393 (100%)	0.61	47 (11%) 4 2	19, 51, 70, 70	0
1	B	393/393 (100%)	0.83	58 (14%) 2 1	20, 54, 70, 70	0
1	C	393/393 (100%)	0.88	66 (16%) 1 1	24, 56, 70, 70	0
1	D	393/393 (100%)	0.75	53 (13%) 3 1	18, 51, 70, 70	0
All	All	1572/1572 (100%)	0.77	224 (14%) 2 1	18, 53, 70, 70	0

The worst 5 of 224 RSRZ outliers are listed below:

Mol	Chain	Res	Type	RSRZ
1	A	21	VAL	13.1
1	C	39	SER	13.0
1	D	103	TYR	10.9
1	B	117	HIS	10.7
1	D	362	GLY	10.5

6.2 Non-standard residues in protein, DNA, RNA chains [i](#)

There are no non-standard protein/DNA/RNA residues in this entry.

6.3 Carbohydrates [i](#)

There are no monosaccharides in this entry.

6.4 Ligands [i](#)

In the following table, the Atoms column lists the number of modelled atoms in the group and the number defined in the chemical component dictionary. The B-factors column lists the minimum, median, 95th percentile and maximum values of B factors of atoms in the group. The column labelled ‘Q< 0.9’ lists the number of atoms with occupancy less than 0.9.

Mol	Type	Chain	Res	Atoms	RSCC	RSR	B-factors(\AA^2)	Q<0.9
2	PLP	D	400	15/16	0.82	0.40	47,62,68,70	0
2	PLP	B	400	15/16	0.86	0.34	51,64,70,70	0
2	PLP	C	400	15/16	0.88	0.28	35,59,70,70	0
2	PLP	A	400	15/16	0.89	0.23	38,56,66,70	0

6.5 Other polymers [i](#)

There are no such residues in this entry.