



wwPDB X-ray Structure Validation Summary Report ⓘ

Oct 18, 2023 – 03:43 PM EDT

PDB ID : 1MS7
Title : X-ray structure of the GluR2 ligand-binding core (S1S2J) in complex with (S)-Des-Me-AMPA at 1.97 Å resolution, Crystallization in the presence of zinc acetate
Authors : Kasper, C.; Lunn, M.-L.; Liljefors, T.; Gouaux, E.; Egebjerg, J.; Kastrup, J.S.
Deposited on : 2002-09-19
Resolution : 1.97 Å (reported)

This is a wwPDB X-ray Structure Validation Summary Report for a publicly released PDB entry.

We welcome your comments at validation@mail.wwpdb.org

A user guide is available at

<https://www.wwpdb.org/validation/2017/XrayValidationReportHelp>

with specific help available everywhere you see the ⓘ symbol.

The types of validation reports are described at

<http://www.wwpdb.org/validation/2017/FAQs#types>.

The following versions of software and data (see [references ⓘ](#)) were used in the production of this report:

MolProbity : 4.02b-467
Mogul : 1.8.5 (274361), CSD as541be (2020)
Xtrriage (Phenix) : **NOT EXECUTED**
EDS : **NOT EXECUTED**
Percentile statistics : 20191225.v01 (using entries in the PDB archive December 25th 2019)
Ideal geometry (proteins) : Engh & Huber (2001)
Ideal geometry (DNA, RNA) : Parkinson et al. (1996)
Validation Pipeline (wwPDB-VP) : 2.36

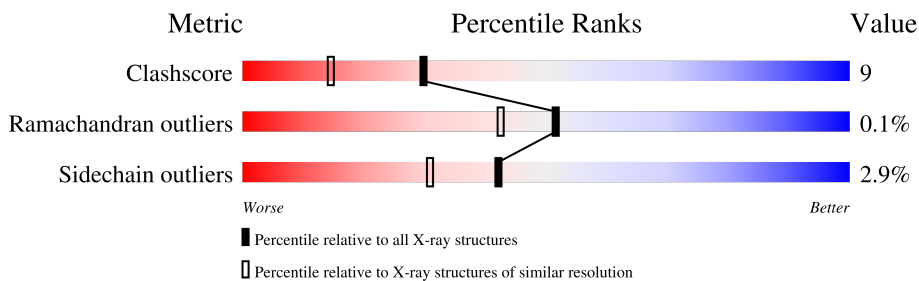
1 Overall quality at a glance

The following experimental techniques were used to determine the structure:

X-RAY DIFFRACTION

The reported resolution of this entry is 1.97 Å.

Percentile scores (ranging between 0-100) for global validation metrics of the entry are shown in the following graphic. The table shows the number of entries on which the scores are based.



Metric	Whole archive (#Entries)	Similar resolution (#Entries, resolution range(Å))
Clashscore	141614	1014 (1.98-1.98)
Ramachandran outliers	138981	1006 (1.98-1.98)
Sidechain outliers	138945	1006 (1.98-1.98)

The table below summarises the geometric issues observed across the polymeric chains and their fit to the electron density. The red, orange, yellow and green segments of the lower bar indicate the fraction of residues that contain outliers for ≥ 3 , 2, 1 and 0 types of geometric quality criteria respectively. A grey segment represents the fraction of residues that are not modelled. The numeric value for each fraction is indicated below the corresponding segment, with a dot representing fractions $\leq 5\%$.

Note EDS was not executed.

Mol	Chain	Length	Quality of chain
1	A	263	
1	B	263	
1	C	263	

2 Entry composition [i](#)

There are 4 unique types of molecules in this entry. The entry contains 7259 atoms, of which 0 are hydrogens and 0 are deuteriums.

In the tables below, the ZeroOcc column contains the number of atoms modelled with zero occupancy, the AltConf column contains the number of residues with at least one atom in alternate conformation and the Trace column contains the number of residues modelled with at most 2 atoms.

- Molecule 1 is a protein called Glutamate receptor subunit 2.

Mol	Chain	Residues	Atoms					ZeroOcc	AltConf	Trace
			Total	C	N	O	S			
1	A	258	2017	1286	336	381	14	0	0	0
1	B	258	2017	1286	336	381	14	0	0	0
1	C	258	2017	1286	336	381	14	0	0	0

There are 12 discrepancies between the modelled and reference sequences:

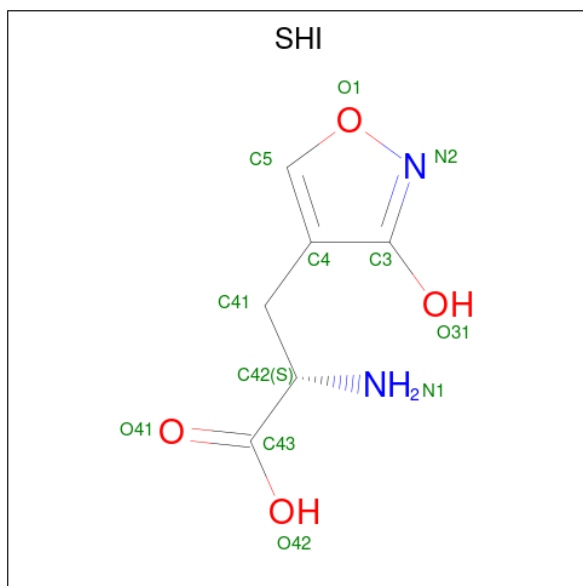
Chain	Residue	Modelled	Actual	Comment	Reference
A	-2	GLY	-	cloning artifact	UNP P19491
A	-1	ALA	-	cloning artifact	UNP P19491
A	115	GLY	-	linker	UNP P19491
A	116	THR	-	linker	UNP P19491
B	-2	GLY	-	cloning artifact	UNP P19491
B	-1	ALA	-	cloning artifact	UNP P19491
B	115	GLY	-	linker	UNP P19491
B	116	THR	-	linker	UNP P19491
C	-2	GLY	-	cloning artifact	UNP P19491
C	-1	ALA	-	cloning artifact	UNP P19491
C	115	GLY	-	linker	UNP P19491
C	116	THR	-	linker	UNP P19491

- Molecule 2 is ZINC ION (three-letter code: ZN) (formula: Zn).

Mol	Chain	Residues	Atoms		ZeroOcc	AltConf
2	A	2	Total	Zn	0	0
			2	2		
2	B	4	Total	Zn	0	0
			4	4		

- Molecule 3 is (S)-2-AMINO-3-(3-HYDROXY-ISOXAZOL-4-YL)PROPIONIC ACID

(three-letter code: SHI) (formula: C₆H₈N₂O₄).



Mol	Chain	Residues	Atoms				ZeroOcc	AltConf
3	A	1	Total	C	N	O	0	0
			12	6	2	4		
3	B	1	Total	C	N	O	0	0
			12	6	2	4		
3	C	1	Total	C	N	O	0	0
			12	6	2	4		

- Molecule 4 is water.


Mol	Chain	Residues	Atoms		ZeroOcc	AltConf
4	A	335	Total	O	0	0
			335	335		
4	B	448	Total	O	0	0
			448	448		
4	C	383	Total	O	0	0
			383	383		

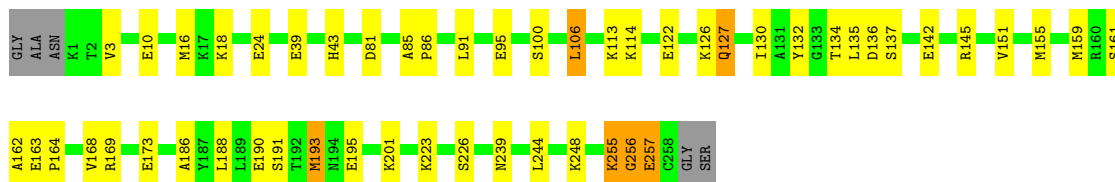
3 Residue-property plots [i](#)

These plots are drawn for all protein, RNA, DNA and oligosaccharide chains in the entry. The first graphic for a chain summarises the proportions of the various outlier classes displayed in the second graphic. The second graphic shows the sequence view annotated by issues in geometry. Residues are color-coded according to the number of geometric quality criteria for which they contain at least one outlier: green = 0, yellow = 1, orange = 2 and red = 3 or more. Stretches of 2 or more consecutive residues without any outlier are shown as a green connector. Residues present in the sample, but not in the model, are shown in grey.


Note EDS was not executed.

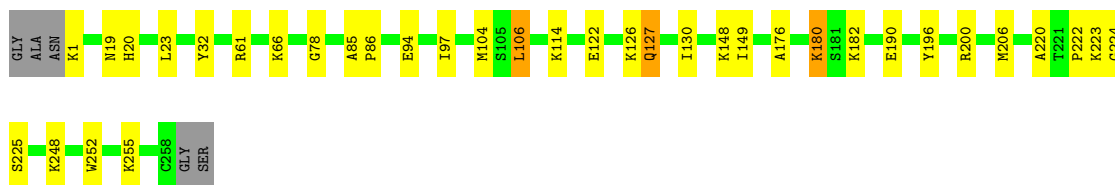
- Molecule 1: Glutamate receptor subunit 2

Chain A:  78% 17% ..




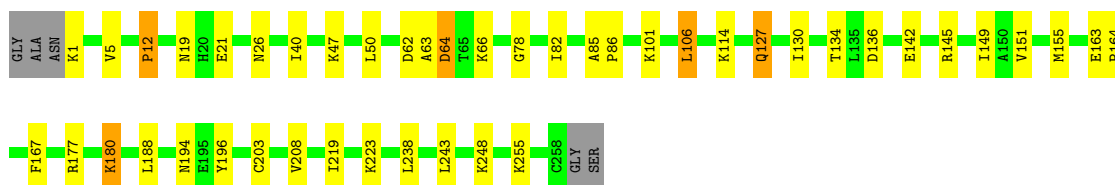
- Molecule 1: Glutamate receptor subunit 2

Chain B:  84% 13% ..



- Molecule 1: Glutamate receptor subunit 2

Chain C:  81% 15% ..



4 Data and refinement statistics

Xtrriage (Phenix) and EDS were not executed - this section is therefore incomplete.

Property	Value	Source
Space group	P 21 21 2	Depositor
Cell constants a, b, c, α , β , γ	113.72Å 162.86Å 47.13Å 90.00° 90.00° 90.00°	Depositor
Resolution (Å)	16.56 – 1.97	Depositor
% Data completeness (in resolution range)	99.1 (16.56-1.97)	Depositor
R_{merge}	0.12	Depositor
R_{sym}	(Not available)	Depositor
Refinement program	CNS 1.0	Depositor
R, R_{free}	0.191 , 0.213	Depositor
Estimated twinning fraction	No twinning to report.	Xtrriage
Total number of atoms	7259	wwPDB-VP
Average B, all atoms (Å ²)	26.0	wwPDB-VP

5 Model quality [i](#)

5.1 Standard geometry [i](#)

Bond lengths and bond angles in the following residue types are not validated in this section: SHI, ZN

The Z score for a bond length (or angle) is the number of standard deviations the observed value is removed from the expected value. A bond length (or angle) with $|Z| > 5$ is considered an outlier worth inspection. RMSZ is the root-mean-square of all Z scores of the bond lengths (or angles).

Mol	Chain	Bond lengths		Bond angles	
		RMSZ	# Z >5	RMSZ	# Z >5
1	A	0.39	0/2053	0.71	0/2761
1	B	0.39	0/2053	0.68	0/2761
1	C	0.37	0/2053	0.70	1/2761 (0.0%)
All	All	0.39	0/6159	0.70	1/8283 (0.0%)

There are no bond length outliers.

All (1) bond angle outliers are listed below:

Mol	Chain	Res	Type	Atoms	Z	Observed($^{\circ}$)	Ideal($^{\circ}$)
1	C	106	LEU	CA-CB-CG	5.00	126.81	115.30

There are no chirality outliers.

There are no planarity outliers.

5.2 Too-close contacts [i](#)

In the following table, the Non-H and H(model) columns list the number of non-hydrogen atoms and hydrogen atoms in the chain respectively. The H(added) column lists the number of hydrogen atoms added and optimized by MolProbity. The Clashes column lists the number of clashes within the asymmetric unit, whereas Symm-Clashes lists symmetry-related clashes.

Mol	Chain	Non-H	H(model)	H(added)	Clashes	Symm-Clashes
1	A	2017	0	2053	44	0
1	B	2017	0	2053	36	0
1	C	2017	0	2053	36	0
2	A	2	0	0	0	0
2	B	4	0	0	0	0
3	A	12	0	6	3	0
3	B	12	0	6	2	0

Continued on next page...

Continued from previous page...

Mol	Chain	Non-H	H(model)	H(added)	Clashes	Symm-Clashes
3	C	12	0	6	0	0
4	A	335	0	0	10	0
4	B	448	0	0	13	0
4	C	383	0	0	7	0
All	All	7259	0	6177	115	0

The all-atom clashscore is defined as the number of clashes found per 1000 atoms (including hydrogen atoms). The all-atom clashscore for this structure is 9.

The worst 5 of 115 close contacts within the same asymmetric unit are listed below, sorted by their clash magnitude.

Atom-1	Atom-2	Interatomic distance (Å)	Clash overlap (Å)
1:C:127:GLN:HE22	1:C:130:ILE:H	1.04	1.01
1:B:127:GLN:HE22	1:B:130:ILE:H	1.10	0.96
1:B:61:ARG:NH1	1:B:66:LYS:HD2	1.91	0.84
1:B:127:GLN:NE2	1:B:130:ILE:H	1.81	0.79
1:B:255:LYS:HB2	4:B:3425:HOH:O	1.84	0.75

There are no symmetry-related clashes.

5.3 Torsion angles [i](#)

5.3.1 Protein backbone [i](#)

In the following table, the Percentiles column shows the percent Ramachandran outliers of the chain as a percentile score with respect to all X-ray entries followed by that with respect to entries of similar resolution.

The Analysed column shows the number of residues for which the backbone conformation was analysed, and the total number of residues.

Mol	Chain	Analysed	Favoured	Allowed	Outliers	Percentiles	
1	A	256/263 (97%)	250 (98%)	5 (2%)	1 (0%)	34	22
1	B	256/263 (97%)	250 (98%)	6 (2%)	0	100	100
1	C	256/263 (97%)	252 (98%)	4 (2%)	0	100	100
All	All	768/789 (97%)	752 (98%)	15 (2%)	1 (0%)	51	42

All (1) Ramachandran outliers are listed below:

Mol	Chain	Res	Type
1	A	256	GLY

5.3.2 Protein sidechains [i](#)

In the following table, the Percentiles column shows the percent sidechain outliers of the chain as a percentile score with respect to all X-ray entries followed by that with respect to entries of similar resolution.

The Analysed column shows the number of residues for which the sidechain conformation was analysed, and the total number of residues.

Mol	Chain	Analysed	Rotameric	Outliers	Percentiles	
1	A	217/219 (99%)	210 (97%)	7 (3%)	39	28
1	B	217/219 (99%)	213 (98%)	4 (2%)	59	51
1	C	217/219 (99%)	209 (96%)	8 (4%)	34	22
All	All	651/657 (99%)	632 (97%)	19 (3%)	42	31

5 of 19 residues with a non-rotameric sidechain are listed below:

Mol	Chain	Res	Type
1	C	127	GLN
1	C	208	VAL
1	C	248	LYS
1	C	194	ASN
1	B	106	LEU

Sometimes sidechains can be flipped to improve hydrogen bonding and reduce clashes. 5 of 6 such sidechains are listed below:

Mol	Chain	Res	Type
1	C	127	GLN
1	C	194	ASN
1	C	229	ASN
1	B	127	GLN
1	A	127	GLN

5.3.3 RNA [i](#)

There are no RNA molecules in this entry.

5.4 Non-standard residues in protein, DNA, RNA chains [i](#)

There are no non-standard protein/DNA/RNA residues in this entry.

5.5 Carbohydrates [i](#)

There are no monosaccharides in this entry.

5.6 Ligand geometry [i](#)

Of 9 ligands modelled in this entry, 6 are monoatomic - leaving 3 for Mogul analysis.

In the following table, the Counts columns list the number of bonds (or angles) for which Mogul statistics could be retrieved, the number of bonds (or angles) that are observed in the model and the number of bonds (or angles) that are defined in the Chemical Component Dictionary. The Link column lists molecule types, if any, to which the group is linked. The Z score for a bond length (or angle) is the number of standard deviations the observed value is removed from the expected value. A bond length (or angle) with $|Z| > 2$ is considered an outlier worth inspection. RMSZ is the root-mean-square of all Z scores of the bond lengths (or angles).

Mol	Type	Chain	Res	Link	Bond lengths			Bond angles		
					Counts	RMSZ	# Z > 2	Counts	RMSZ	# Z > 2
3	SHI	B	2002	-	7,12,12	1.46	1 (14%)	7,16,16	1.29	1 (14%)
3	SHI	A	2001	-	7,12,12	1.44	1 (14%)	7,16,16	1.27	1 (14%)
3	SHI	C	2003	-	7,12,12	1.47	1 (14%)	7,16,16	1.32	1 (14%)

In the following table, the Chirals column lists the number of chiral outliers, the number of chiral centers analysed, the number of these observed in the model and the number defined in the Chemical Component Dictionary. Similar counts are reported in the Torsion and Rings columns. '-' means no outliers of that kind were identified.

Mol	Type	Chain	Res	Link	Chirals	Torsions	Rings
3	SHI	B	2002	-	-	0/7/8/8	0/1/1/1
3	SHI	A	2001	-	-	0/7/8/8	0/1/1/1
3	SHI	C	2003	-	-	0/7/8/8	0/1/1/1

All (3) bond length outliers are listed below:

Mol	Chain	Res	Type	Atoms	Z	Observed(Å)	Ideal(Å)
3	C	2003	SHI	C4-C3	3.21	1.46	1.38
3	B	2002	SHI	C4-C3	3.15	1.46	1.38
3	A	2001	SHI	C4-C3	3.14	1.46	1.38

All (3) bond angle outliers are listed below:

Mol	Chain	Res	Type	Atoms	Z	Observed(°)	Ideal(°)
3	C	2003	SHI	C41-C4-C5	2.17	131.55	127.48
3	A	2001	SHI	C41-C4-C5	2.06	131.34	127.48
3	B	2002	SHI	C41-C4-C5	2.01	131.25	127.48

There are no chirality outliers.

There are no torsion outliers.

There are no ring outliers.

2 monomers are involved in 5 short contacts:

Mol	Chain	Res	Type	Clashes	Symm-Clashes
3	B	2002	SHI	2	0
3	A	2001	SHI	3	0

5.7 Other polymers [i](#)

There are no such residues in this entry.

5.8 Polymer linkage issues [i](#)

There are no chain breaks in this entry.

6 Fit of model and data

6.1 Protein, DNA and RNA chains

EDS was not executed - this section is therefore empty.

6.2 Non-standard residues in protein, DNA, RNA chains

EDS was not executed - this section is therefore empty.

6.3 Carbohydrates

EDS was not executed - this section is therefore empty.

6.4 Ligands

EDS was not executed - this section is therefore empty.

6.5 Other polymers

EDS was not executed - this section is therefore empty.