



Full wwPDB X-ray Structure Validation Report ⓘ

Aug 6, 2023 – 12:24 AM EDT

PDB ID : 1KPU
Title : High resolution crystal structure of the MHC class I complex H-2Kb/VSV8
Authors : Rudolph, M.G.; Wilson, I.A.
Deposited on : 2002-01-02
Resolution : 1.50 Å(reported)

This is a Full wwPDB X-ray Structure Validation Report for a publicly released PDB entry.

We welcome your comments at validation@mail.wwpdb.org

A user guide is available at

<https://www.wwpdb.org/validation/2017/XrayValidationReportHelp>

with specific help available everywhere you see the ⓘ symbol.

The types of validation reports are described at

<http://www.wwpdb.org/validation/2017/FAQs#types>.

The following versions of software and data (see [references ⓘ](#)) were used in the production of this report:

MolProbity : 4.02b-467
Mogul : 1.8.5 (274361), CSD as541be (2020)
Xtrriage (Phenix) : 1.13
EDS : 2.35
Percentile statistics : 20191225.v01 (using entries in the PDB archive December 25th 2019)
Refmac : 5.8.0158
CCP4 : 7.0.044 (Gargrove)
Ideal geometry (proteins) : Engh & Huber (2001)
Ideal geometry (DNA, RNA) : Parkinson et al. (1996)
Validation Pipeline (wwPDB-VP) : 2.35

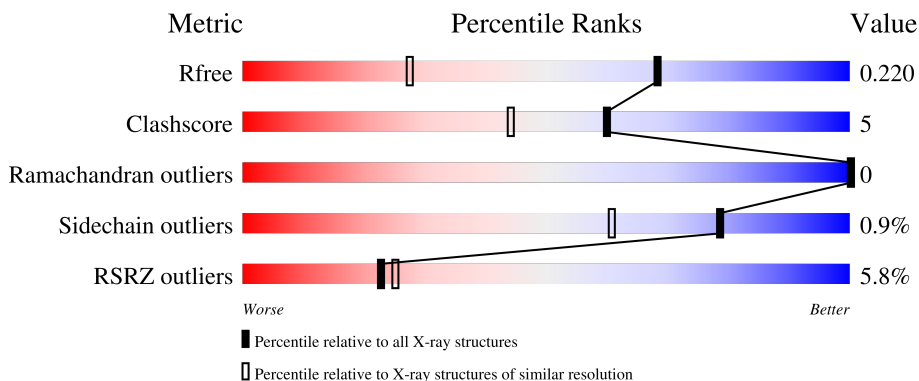
1 Overall quality at a glance i

The following experimental techniques were used to determine the structure:

X-RAY DIFFRACTION

The reported resolution of this entry is 1.50 Å.

Percentile scores (ranging between 0-100) for global validation metrics of the entry are shown in the following graphic. The table shows the number of entries on which the scores are based.



Metric	Whole archive (#Entries)	Similar resolution (#Entries, resolution range(Å))
R_{free}	130704	2936 (1.50-1.50)
Clashscore	141614	3144 (1.50-1.50)
Ramachandran outliers	138981	3066 (1.50-1.50)
Sidechain outliers	138945	3064 (1.50-1.50)
RSRZ outliers	127900	2884 (1.50-1.50)

The table below summarises the geometric issues observed across the polymeric chains and their fit to the electron density. The red, orange, yellow and green segments of the lower bar indicate the fraction of residues that contain outliers for ≥ 3 , 2, 1 and 0 types of geometric quality criteria respectively. A grey segment represents the fraction of residues that are not modelled. The numeric value for each fraction is indicated below the corresponding segment, with a dot representing fractions $\leq 5\%$. The upper red bar (where present) indicates the fraction of residues that have poor fit to the electron density. The numeric value is given above the bar.

Mol	Chain	Length	Quality of chain
1	A	274	 7% 89% 11%
2	B	99	 3% 89% 11%
3	P	8	 75% 25%
4	C	3	 33% 67%

The following table lists non-polymeric compounds, carbohydrate monomers and non-standard

residues in protein, DNA, RNA chains that are outliers for geometric or electron-density-fit criteria:

Mol	Type	Chain	Res	Chirality	Geometry	Clashes	Electron density
4	NAG	C	2	-	-	-	X
6	MPD	B	701	X	-	-	-

2 Entry composition i

There are 7 unique types of molecules in this entry. The entry contains 3640 atoms, of which 0 are hydrogens and 0 are deuteriums.

In the tables below, the ZeroOcc column contains the number of atoms modelled with zero occupancy, the AltConf column contains the number of residues with at least one atom in alternate conformation and the Trace column contains the number of residues modelled with at most 2 atoms.

- Molecule 1 is a protein called H-2 class I histocompatibility antigen, K-B alpha chain.

Mol	Chain	Residues	Atoms					ZeroOcc	AltConf	Trace
			Total	C	N	O	S			
1	A	274	2260	1422	399	429	10	0	8	0

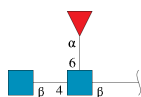
- Molecule 2 is a protein called beta-2-microglobulin.

Mol	Chain	Residues	Atoms					ZeroOcc	AltConf	Trace
			Total	C	N	O	S			
2	B	99	828	527	138	155	8	0	3	0

- Molecule 3 is a protein called nucleocapsid.

Mol	Chain	Residues	Atoms				ZeroOcc	AltConf	Trace
			Total	C	N	O			
3	P	8	68	44	12	12	0	0	0

- Molecule 4 is an oligosaccharide called 2-acetamido-2-deoxy-beta-D-glucopyranose-(1-4)-[alpha-L-fucopyranose-(1-6)]2-acetamido-2-deoxy-beta-D-glucopyranose.



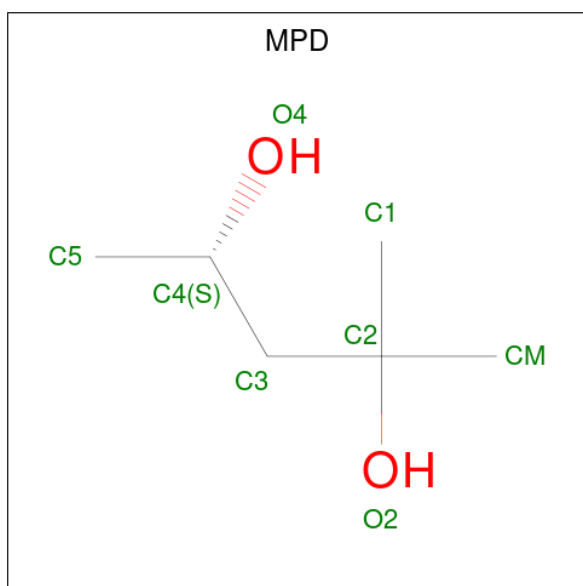
Mol	Chain	Residues	Atoms				ZeroOcc	AltConf	Trace
			Total	C	N	O			
4	C	3	38	22	2	14	0	0	0

- Molecule 5 is 2-acetamido-2-deoxy-beta-D-glucopyranose (three-letter code: NAG) (formula: C₈H₁₅NO₆).



Mol	Chain	Residues	Atoms			ZeroOcc	AltConf	
			Total	C	N			O
5	A	1	14	8	1	5	0	0

- Molecule 6 is (4S)-2-METHYL-2,4-PENTANEDIOL (three-letter code: MPD) (formula: $C_6H_{14}O_2$).



Mol	Chain	Residues	Atoms			ZeroOcc	AltConf
			Total	C	O		
6	A	1	8	6	2	0	0
6	B	1	8	6	2	0	0

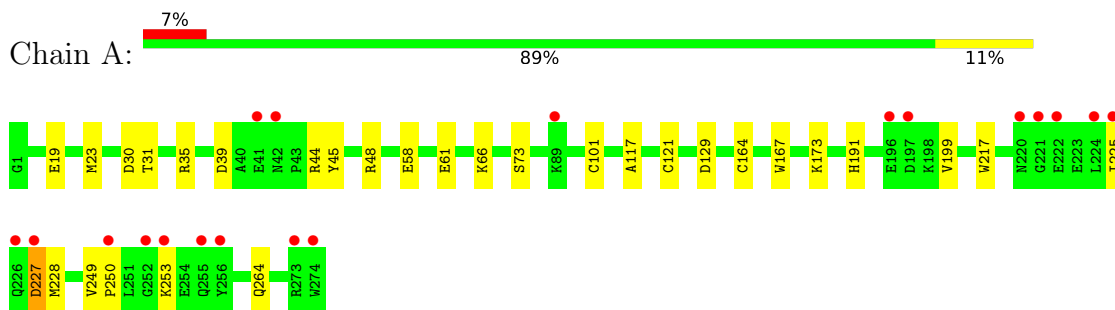
- Molecule 7 is water.

Mol	Chain	Residues	Atoms		ZeroOcc	AltConf
7	A	300	Total 300	O 300	0	0
7	B	108	Total 108	O 108	0	0
7	P	8	Total 8	O 8	0	0

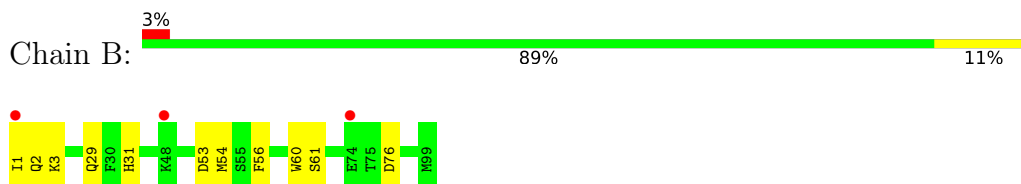
3 Residue-property plots [i](#)

These plots are drawn for all protein, RNA, DNA and oligosaccharide chains in the entry. The first graphic for a chain summarises the proportions of the various outlier classes displayed in the second graphic. The second graphic shows the sequence view annotated by issues in geometry and electron density. Residues are color-coded according to the number of geometric quality criteria for which they contain at least one outlier: green = 0, yellow = 1, orange = 2 and red = 3 or more. A red dot above a residue indicates a poor fit to the electron density ($RSRZ > 2$). Stretches of 2 or more consecutive residues without any outlier are shown as a green connector. Residues present in the sample, but not in the model, are shown in grey.

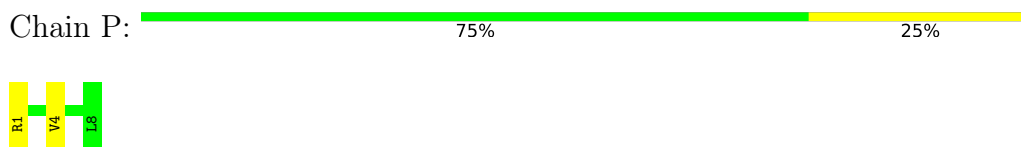
- Molecule 1: H-2 class I histocompatibility antigen, K-B alpha chain



- Molecule 2: beta-2-microglobulin



- Molecule 3: nucleocapsid



- Molecule 4: 2-acetamido-2-deoxy-beta-D-glucopyranose-(1-4)-[alpha-L-fucopyranose-(1-6)]2-acetamido-2-deoxy-beta-D-glucopyranose



4 Data and refinement statistics

Property	Value	Source
Space group	P 21 21 2	Depositor
Cell constants a, b, c, α , β , γ	136.09Å 88.12Å 45.24Å 90.00° 90.00° 90.00°	Depositor
Resolution (Å)	41.89 – 1.50 41.92 – 1.50	Depositor EDS
% Data completeness (in resolution range)	96.8 (41.89-1.50) 89.5 (41.92-1.50)	Depositor EDS
R_{merge}	(Not available)	Depositor
R_{sym}	0.11	Depositor
$\langle I/\sigma(I) \rangle$ ¹	3.11 (at 1.50Å)	Xtrriage
Refinement program	REFMAC 5.0, CNS	Depositor
R, R_{free}	0.184 , 0.208 0.194 , 0.220	Depositor DCC
R_{free} test set	4104 reflections (5.05%)	wwPDB-VP
Wilson B-factor (Å ²)	15.3	Xtrriage
Anisotropy	0.252	Xtrriage
Bulk solvent k_{sol} (e/Å ³), B_{sol} (Å ²)	0.42 , 52.3	EDS
L-test for twinning ²	$\langle L \rangle = 0.48$, $\langle L^2 \rangle = 0.31$	Xtrriage
Estimated twinning fraction	No twinning to report.	Xtrriage
F_o, F_c correlation	0.95	EDS
Total number of atoms	3640	wwPDB-VP
Average B, all atoms (Å ²)	20.0	wwPDB-VP

Xtrriage's analysis on translational NCS is as follows: *The largest off-origin peak in the Patterson function is 4.99% of the height of the origin peak. No significant pseudotranslation is detected.*

¹Intensities estimated from amplitudes.

²Theoretical values of $\langle |L| \rangle$, $\langle L^2 \rangle$ for acentric reflections are 0.5, 0.333 respectively for untwinned datasets, and 0.375, 0.2 for perfectly twinned datasets.

5 Model quality

5.1 Standard geometry

Bond lengths and bond angles in the following residue types are not validated in this section: MPD, FUC, NAG

The Z score for a bond length (or angle) is the number of standard deviations the observed value is removed from the expected value. A bond length (or angle) with $|Z| > 5$ is considered an outlier worth inspection. RMSZ is the root-mean-square of all Z scores of the bond lengths (or angles).

Mol	Chain	Bond lengths		Bond angles	
		RMSZ	# Z >5	RMSZ	# Z >5
1	A	0.65	0/2362	0.88	8/3203 (0.2%)
2	B	0.66	0/870	0.84	2/1179 (0.2%)
3	P	0.96	0/69	0.89	0/90
All	All	0.66	0/3301	0.87	10/4472 (0.2%)

There are no bond length outliers.

All (10) bond angle outliers are listed below:

Mol	Chain	Res	Type	Atoms	Z	Observed(°)	Ideal(°)
2	B	76	ASP	CB-CG-OD2	6.90	124.51	118.30
2	B	53	ASP	CB-CG-OD2	5.66	123.39	118.30
1	A	227	ASP	CB-CG-OD2	5.63	123.36	118.30
1	A	73[A]	SER	CA-CB-OG	5.61	126.34	111.20
1	A	73[B]	SER	CA-CB-OG	5.61	126.34	111.20
1	A	129	ASP	CB-CG-OD2	5.30	123.07	118.30
1	A	30[A]	ASP	CB-CG-OD2	5.20	122.98	118.30
1	A	30[B]	ASP	CB-CG-OD2	5.20	122.98	118.30
1	A	31	THR	OG1-CB-CG2	-5.18	98.08	110.00
1	A	39	ASP	CB-CG-OD2	5.05	122.84	118.30

There are no chirality outliers.

There are no planarity outliers.

5.2 Too-close contacts

In the following table, the Non-H and H(model) columns list the number of non-hydrogen atoms and hydrogen atoms in the chain respectively. The H(added) column lists the number of hydrogen atoms added and optimized by MolProbity. The Clashes column lists the number of clashes within the asymmetric unit, whereas Symm-Clashes lists symmetry-related clashes.

Mol	Chain	Non-H	H(model)	H(added)	Clashes	Symm-Clashes
1	A	2260	0	2145	23	0
2	B	828	0	800	9	0
3	P	68	0	67	3	0
4	C	38	0	34	0	0
5	A	14	0	13	0	0
6	A	8	0	14	0	0
6	B	8	0	13	0	0
7	A	300	0	0	8	0
7	B	108	0	0	0	0
7	P	8	0	0	1	0
All	All	3640	0	3086	28	0

The all-atom clashscore is defined as the number of clashes found per 1000 atoms (including hydrogen atoms). The all-atom clashscore for this structure is 5.

All (28) close contacts within the same asymmetric unit are listed below, sorted by their clash magnitude.

Atom-1	Atom-2	Interatomic distance (Å)	Clash overlap (Å)
1:A:121:CYS:SG	2:B:1:ILE:HD11	2.01	0.99
1:A:23[A]:MET:SD	2:B:54[A]:MET:SD	2.75	0.85
1:A:264[B]:GLN:HG3	7:A:743:HOH:O	1.90	0.71
1:A:19:GLU:HG2	7:A:849:HOH:O	1.90	0.70
1:A:173[A]:LYS:CE	7:A:980:HOH:O	2.43	0.65
1:A:121:CYS:SG	2:B:1:ILE:CD1	2.84	0.64
1:A:121:CYS:HG	2:B:1:ILE:HD11	1.61	0.64
1:A:35[B]:ARG:HG2	1:A:48:ARG:HD3	1.80	0.63
1:A:173[A]:LYS:NZ	7:A:980:HOH:O	2.35	0.57
1:A:250:PRO:HG2	1:A:253:LYS:HB2	1.86	0.56
1:A:117:ALA:HB2	2:B:60:TRP:CE2	2.43	0.54
1:A:225:ILE:HA	1:A:228:MET:HE3	1.92	0.51
2:B:29:GLN:HA	2:B:61[A]:SER:HB3	1.93	0.51
2:B:3:LYS:CE	2:B:61[A]:SER:OG	2.59	0.50
1:A:66:LYS:HG3	3:P:4:VAL:HG22	1.93	0.50
1:A:44:ARG:NH2	1:A:61:GLU:OE1	2.41	0.50
2:B:3:LYS:HE3	2:B:31:HIS:HB2	1.93	0.49
2:B:3:LYS:NZ	2:B:61[A]:SER:OG	2.48	0.46
1:A:58:GLU:HG3	7:A:749:HOH:O	2.14	0.46
1:A:121:CYS:SG	7:A:901:HOH:O	2.31	0.45
1:A:101:CYS:CB	1:A:164:CYS:HG	2.27	0.45
1:A:191:HIS:NE2	1:A:199:VAL:HG11	2.31	0.44
1:A:249:VAL:HB	1:A:250:PRO:HD2	1.99	0.44
1:A:173[A]:LYS:HE3	7:A:980:HOH:O	2.15	0.43

Continued on next page...

Continued from previous page...

Atom-1	Atom-2	Interatomic distance (Å)	Clash overlap (Å)
1:A:227:ASP:O	7:A:975:HOH:O	2.21	0.43
1:A:167:TRP:NE1	3:P:1:ARG:HD2	2.35	0.41
1:A:217:TRP:H	1:A:228:MET:HE1	1.84	0.41
3:P:1:ARG:NE	7:P:166:HOH:O	2.53	0.41

There are no symmetry-related clashes.

5.3 Torsion angles [i](#)

5.3.1 Protein backbone [i](#)

In the following table, the Percentiles column shows the percent Ramachandran outliers of the chain as a percentile score with respect to all X-ray entries followed by that with respect to entries of similar resolution.

The Analysed column shows the number of residues for which the backbone conformation was analysed, and the total number of residues.

Mol	Chain	Analysed	Favoured	Allowed	Outliers	Percentiles	
1	A	280/274 (102%)	278 (99%)	2 (1%)	0	100	100
2	B	100/99 (101%)	100 (100%)	0	0	100	100
3	P	6/8 (75%)	6 (100%)	0	0	100	100
All	All	386/381 (101%)	384 (100%)	2 (0%)	0	100	100

There are no Ramachandran outliers to report.

5.3.2 Protein sidechains [i](#)

In the following table, the Percentiles column shows the percent sidechain outliers of the chain as a percentile score with respect to all X-ray entries followed by that with respect to entries of similar resolution.

The Analysed column shows the number of residues for which the sidechain conformation was analysed, and the total number of residues.

Mol	Chain	Analysed	Rotameric	Outliers	Percentiles	
1	A	240/232 (103%)	239 (100%)	1 (0%)	91	82
2	B	97/94 (103%)	95 (98%)	2 (2%)	53	23
3	P	6/6 (100%)	6 (100%)	0	100	100

Continued on next page...

Continued from previous page...

Mol	Chain	Analysed	Rotameric	Outliers	Percentiles
All	All	343/332 (103%)	340 (99%)	3 (1%)	78 61

All (3) residues with a non-rotameric sidechain are listed below:

Mol	Chain	Res	Type
1	A	45	TYR
2	B	2	GLN
2	B	56	PHE

Sometimes sidechains can be flipped to improve hydrogen bonding and reduce clashes. All (5) such sidechains are listed below:

Mol	Chain	Res	Type
1	A	87	GLN
1	A	115	GLN
1	A	174	ASN
1	A	220	ASN
1	A	226	GLN

5.3.3 RNA [i](#)

There are no RNA molecules in this entry.

5.4 Non-standard residues in protein, DNA, RNA chains [i](#)

There are no non-standard protein/DNA/RNA residues in this entry.

5.5 Carbohydrates [i](#)

3 monosaccharides are modelled in this entry.

In the following table, the Counts columns list the number of bonds (or angles) for which Mogul statistics could be retrieved, the number of bonds (or angles) that are observed in the model and the number of bonds (or angles) that are defined in the Chemical Component Dictionary. The Link column lists molecule types, if any, to which the group is linked. The Z score for a bond length (or angle) is the number of standard deviations the observed value is removed from the expected value. A bond length (or angle) with $|Z| > 2$ is considered an outlier worth inspection. RMSZ is the root-mean-square of all Z scores of the bond lengths (or angles).

Mol	Type	Chain	Res	Link	Bond lengths			Bond angles		
					Counts	RMSZ	# Z > 2	Counts	RMSZ	# Z > 2
4	NAG	C	1	1,4	14,14,15	0.48	0	17,19,21	0.79	0
4	NAG	C	2	4	14,14,15	0.77	1 (7%)	17,19,21	2.39	3 (17%)
4	FUC	C	3	4	10,10,11	0.53	0	14,14,16	1.63	4 (28%)

In the following table, the Chirals column lists the number of chiral outliers, the number of chiral centers analysed, the number of these observed in the model and the number defined in the Chemical Component Dictionary. Similar counts are reported in the Torsion and Rings columns. '-' means no outliers of that kind were identified.

Mol	Type	Chain	Res	Link	Chirals	Torsions	Rings
4	NAG	C	1	1,4	-	2/6/23/26	0/1/1/1
4	NAG	C	2	4	-	0/6/23/26	0/1/1/1
4	FUC	C	3	4	-	-	0/1/1/1

All (1) bond length outliers are listed below:

Mol	Chain	Res	Type	Atoms	Z	Observed(Å)	Ideal(Å)
4	C	2	NAG	C1-C2	2.09	1.55	1.52

All (7) bond angle outliers are listed below:

Mol	Chain	Res	Type	Atoms	Z	Observed(°)	Ideal(°)
4	C	2	NAG	O5-C1-C2	8.33	124.45	111.29
4	C	2	NAG	C1-O5-C5	3.85	117.40	112.19
4	C	3	FUC	O5-C5-C6	3.02	113.82	107.33
4	C	3	FUC	C6-C5-C4	-2.88	107.75	113.07
4	C	3	FUC	O5-C1-C2	-2.72	106.57	110.77
4	C	2	NAG	O5-C5-C4	2.29	116.40	110.83
4	C	3	FUC	O5-C5-C4	2.16	113.40	109.52

There are no chirality outliers.

All (2) torsion outliers are listed below:

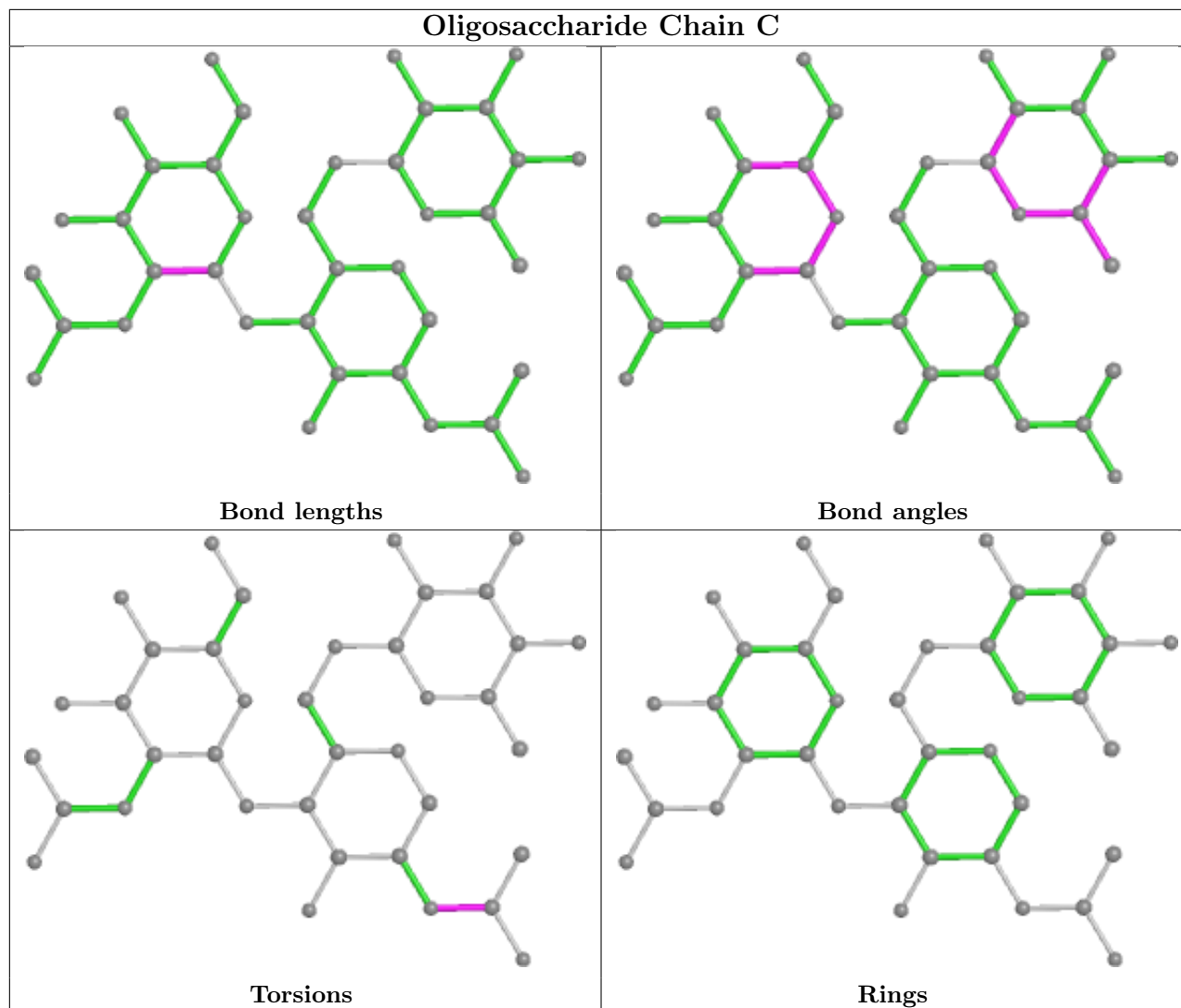
Mol	Chain	Res	Type	Atoms
4	C	1	NAG	C8-C7-N2-C2
4	C	1	NAG	O7-C7-N2-C2

There are no ring outliers.

No monomer is involved in short contacts.

The following is a two-dimensional graphical depiction of Mogul quality analysis of bond lengths,

bond angles, torsion angles, and ring geometry for oligosaccharide.



5.6 Ligand geometry [i](#)

3 ligands are modelled in this entry.

In the following table, the Counts columns list the number of bonds (or angles) for which Mogul statistics could be retrieved, the number of bonds (or angles) that are observed in the model and the number of bonds (or angles) that are defined in the Chemical Component Dictionary. The Link column lists molecule types, if any, to which the group is linked. The Z score for a bond length (or angle) is the number of standard deviations the observed value is removed from the expected value. A bond length (or angle) with $|Z| > 2$ is considered an outlier worth inspection. RMSZ is the root-mean-square of all Z scores of the bond lengths (or angles).

Mol	Type	Chain	Res	Link	Bond lengths			Bond angles		
					Counts	RMSZ	$\# Z > 2$	Counts	RMSZ	$\# Z > 2$
6	MPD	A	702	-	7,7,7	0.29	0	9,10,10	0.52	0

Mol	Type	Chain	Res	Link	Bond lengths			Bond angles		
					Counts	RMSZ	# Z > 2	Counts	RMSZ	# Z > 2
5	NAG	A	500	1	14,14,15	0.79	0	17,19,21	0.87	1 (5%)
6	MPD	B	701	-	7,7,7	0.46	0	9,10,10	1.28	1 (11%)

In the following table, the Chirals column lists the number of chiral outliers, the number of chiral centers analysed, the number of these observed in the model and the number defined in the Chemical Component Dictionary. Similar counts are reported in the Torsion and Rings columns. '-' means no outliers of that kind were identified.

Mol	Type	Chain	Res	Link	Chirals	Torsions	Rings
6	MPD	A	702	-	-	2/5/5/5	-
5	NAG	A	500	1	-	2/6/23/26	0/1/1/1
6	MPD	B	701	-	1/1/2/2	2/5/5/5	-

There are no bond length outliers.

All (2) bond angle outliers are listed below:

Mol	Chain	Res	Type	Atoms	Z	Observed(°)	Ideal(°)
6	B	701	MPD	O4-C4-C3	2.81	122.71	111.36
5	A	500	NAG	C1-O5-C5	2.06	114.98	112.19

All (1) chirality outliers are listed below:

Mol	Chain	Res	Type	Atom
6	B	701	MPD	C4

All (6) torsion outliers are listed below:

Mol	Chain	Res	Type	Atoms
5	A	500	NAG	C8-C7-N2-C2
6	B	701	MPD	C2-C3-C4-O4
6	A	702	MPD	C1-C2-C3-C4
6	B	701	MPD	CM-C2-C3-C4
5	A	500	NAG	O7-C7-N2-C2
6	A	702	MPD	O2-C2-C3-C4

There are no ring outliers.

No monomer is involved in short contacts.

5.7 Other polymers [i](#)

There are no such residues in this entry.

5.8 Polymer linkage issues [i](#)

There are no chain breaks in this entry.

6 Fit of model and data

6.1 Protein, DNA and RNA chains

In the following table, the column labelled ‘#RSRZ > 2’ contains the number (and percentage) of RSRZ outliers, followed by percent RSRZ outliers for the chain as percentile scores relative to all X-ray entries and entries of similar resolution. The OWAB column contains the minimum, median, 95th percentile and maximum values of the occupancy-weighted average B-factor per residue. The column labelled ‘Q < 0.9’ lists the number of (and percentage) of residues with an average occupancy less than 0.9.

Mol	Chain	Analysed	<RSRZ>	#RSRZ>2	OWAB(Å ²)	Q<0.9
1	A	274/274 (100%)	0.33	19 (6%) 16 17	9, 16, 36, 47	0
2	B	99/99 (100%)	0.42	3 (3%) 50 55	11, 17, 31, 41	0
3	P	8/8 (100%)	0.03	0 100 100	13, 15, 17, 28	0
All	All	381/381 (100%)	0.35	22 (5%) 23 25	9, 16, 34, 47	0

All (22) RSRZ outliers are listed below:

Mol	Chain	Res	Type	RSRZ
2	B	1	ILE	13.2
1	A	225	ILE	11.1
1	A	226	GLN	6.6
1	A	256	TYR	5.9
1	A	41	GLU	5.3
1	A	42	ASN	5.2
1	A	220	ASN	4.7
1	A	227	ASP	4.6
1	A	274	TRP	4.2
1	A	222	GLU	4.1
1	A	221	GLY	4.1
1	A	196	GLU	4.0
1	A	255	GLN	3.3
1	A	197	ASP	3.2
1	A	253	LYS	3.0
1	A	250	PRO	2.9
2	B	74	GLU	2.8
2	B	48	LYS	2.7
1	A	224	LEU	2.4
1	A	252	GLY	2.3
1	A	273	ARG	2.1
1	A	89	LYS	2.0

6.2 Non-standard residues in protein, DNA, RNA chains [i](#)

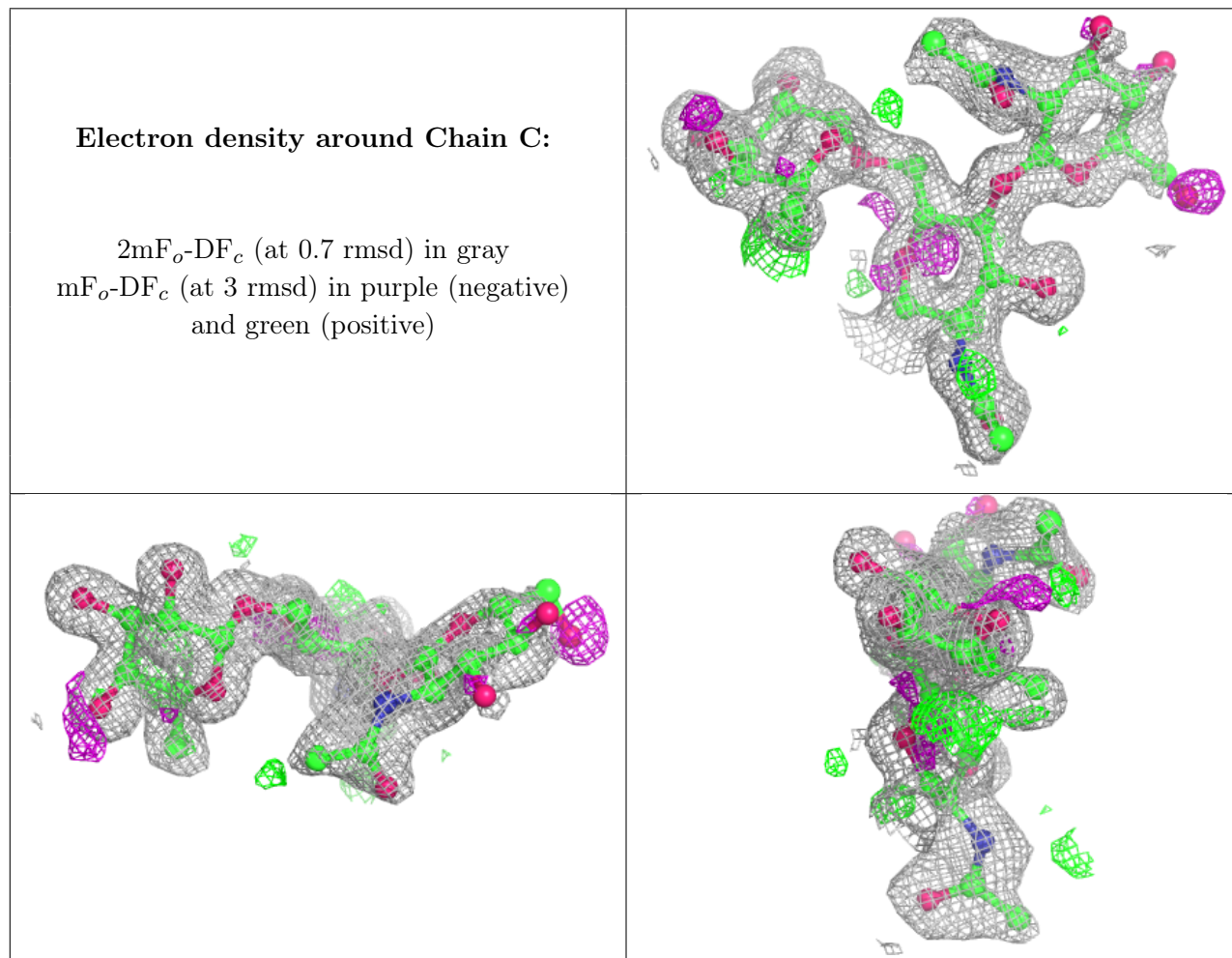
There are no non-standard protein/DNA/RNA residues in this entry.

6.3 Carbohydrates [i](#)

In the following table, the Atoms column lists the number of modelled atoms in the group and the number defined in the chemical component dictionary. The B-factors column lists the minimum, median, 95th percentile and maximum values of B factors of atoms in the group. The column labelled 'Q<0.9' lists the number of atoms with occupancy less than 0.9.

Mol	Type	Chain	Res	Atoms	RSCC	RSR	B-factors(Å ²)	Q<0.9
4	NAG	C	2	14/15	0.65	0.41	44,47,49,51	0
4	FUC	C	3	10/11	0.75	0.21	28,33,36,36	0
4	NAG	C	1	14/15	0.79	0.21	28,34,39,39	0

The following is a graphical depiction of the model fit to experimental electron density for oligosaccharide. Each fit is shown from different orientation to approximate a three-dimensional view.



6.4 Ligands [i](#)

In the following table, the Atoms column lists the number of modelled atoms in the group and the number defined in the chemical component dictionary. The B-factors column lists the minimum, median, 95th percentile and maximum values of B factors of atoms in the group. The column labelled 'Q< 0.9' lists the number of atoms with occupancy less than 0.9.

Mol	Type	Chain	Res	Atoms	RSCC	RSR	B-factors(Å ²)	Q<0.9
5	NAG	A	500	14/15	0.72	0.32	37,42,45,46	0
6	MPD	B	701	8/8	0.83	0.14	23,25,26,27	0
6	MPD	A	702	8/8	0.93	0.11	20,27,28,29	0

6.5 Other polymers [i](#)

There are no such residues in this entry.