



Full wwPDB X-ray Structure Validation Report ⓘ

Oct 17, 2023 – 12:34 AM EDT

PDB ID : 1IT7
Title : Crystal structure of archaeosine tRNA-guanine transglycosylase complexed with guanine
Authors : Ishitani, R.; Nureki, O.; Fukai, S.; Kijimoto, T.; Nameki, N.; Watanabe, M.; Kondo, H.; Sekine, M.; Okada, N.; Nishimura, S.; Yokoyama, S.; RIKEN Structural Genomics/Proteomics Initiative (RSGI)
Deposited on : 2002-01-11
Resolution : 2.30 Å(reported)

This is a Full wwPDB X-ray Structure Validation Report for a publicly released PDB entry.

We welcome your comments at validation@mail.wwpdb.org

A user guide is available at

<https://www.wwpdb.org/validation/2017/XrayValidationReportHelp>

with specific help available everywhere you see the ⓘ symbol.

The types of validation reports are described at

<http://www.wwpdb.org/validation/2017/FAQs#types>.

The following versions of software and data (see [references ⓘ](#)) were used in the production of this report:

MolProbity : 4.02b-467
Mogul : 1.8.5 (274361), CSD as541be (2020)
Xtrriage (Phenix) : **NOT EXECUTED**
EDS : **NOT EXECUTED**
Percentile statistics : 20191225.v01 (using entries in the PDB archive December 25th 2019)
Ideal geometry (proteins) : Engh & Huber (2001)
Ideal geometry (DNA, RNA) : Parkinson et al. (1996)
Validation Pipeline (wwPDB-VP) : 2.36

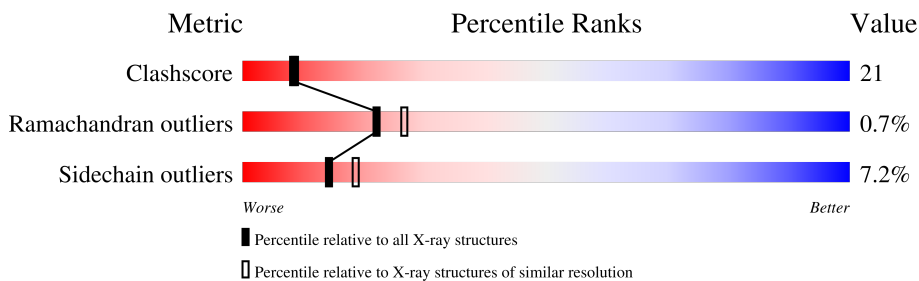
1 Overall quality at a glance

The following experimental techniques were used to determine the structure:

X-RAY DIFFRACTION

The reported resolution of this entry is 2.30 Å.

Percentile scores (ranging between 0-100) for global validation metrics of the entry are shown in the following graphic. The table shows the number of entries on which the scores are based.



Metric	Whole archive (#Entries)	Similar resolution (#Entries, resolution range(Å))
Clashscore	141614	5643 (2.30-2.30)
Ramachandran outliers	138981	5575 (2.30-2.30)
Sidechain outliers	138945	5575 (2.30-2.30)

The table below summarises the geometric issues observed across the polymeric chains and their fit to the electron density. The red, orange, yellow and green segments of the lower bar indicate the fraction of residues that contain outliers for ≥ 3 , 2, 1 and 0 types of geometric quality criteria respectively. A grey segment represents the fraction of residues that are not modelled. The numeric value for each fraction is indicated below the corresponding segment, with a dot representing fractions $\leq 5\%$.

Note EDS was not executed.

Mol	Chain	Length	Quality of chain
1	A	582	
1	B	582	

2 Entry composition [i](#)

There are 5 unique types of molecules in this entry. The entry contains 9503 atoms, of which 0 are hydrogens and 0 are deuteriums.

In the tables below, the ZeroOcc column contains the number of atoms modelled with zero occupancy, the AltConf column contains the number of residues with at least one atom in alternate conformation and the Trace column contains the number of residues modelled with at most 2 atoms.

- Molecule 1 is a protein called Archaeosine tRNA-guanine transglycosylase.

Mol	Chain	Residues	Atoms					ZeroOcc	AltConf	Trace
			Total	C	N	O	S			
1	A	577	4652	2970	815	848	19	0	0	0
1	B	577	4652	2970	815	848	19	0	0	0

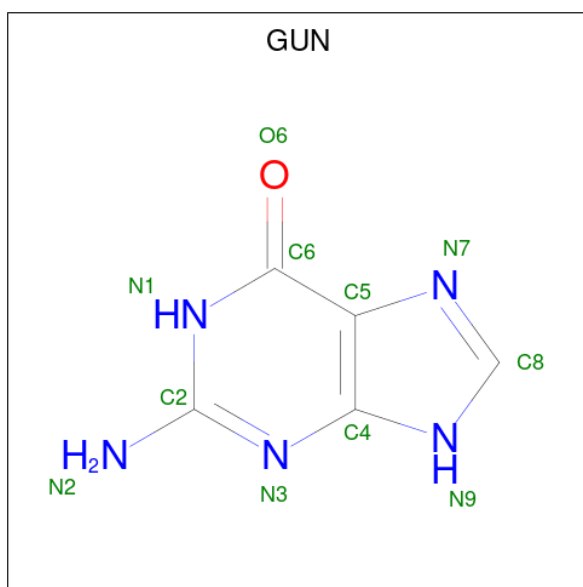
- Molecule 2 is ZINC ION (three-letter code: ZN) (formula: Zn).

Mol	Chain	Residues	Atoms		ZeroOcc	AltConf
2	A	1	Total	Zn	0	0
			1	1		
2	B	1	Total	Zn	0	0
			1	1		

- Molecule 3 is MAGNESIUM ION (three-letter code: MG) (formula: Mg).

Mol	Chain	Residues	Atoms		ZeroOcc	AltConf
3	A	1	Total	Mg	0	0
			1	1		
3	B	1	Total	Mg	0	0
			1	1		

- Molecule 4 is GUANINE (three-letter code: GUN) (formula: C₅H₅N₅O).



Mol	Chain	Residues	Atoms				ZeroOcc	AltConf
			Total	C	N	O		
4	A	1	11	5	5	1	0	0

- Molecule 5 is water.

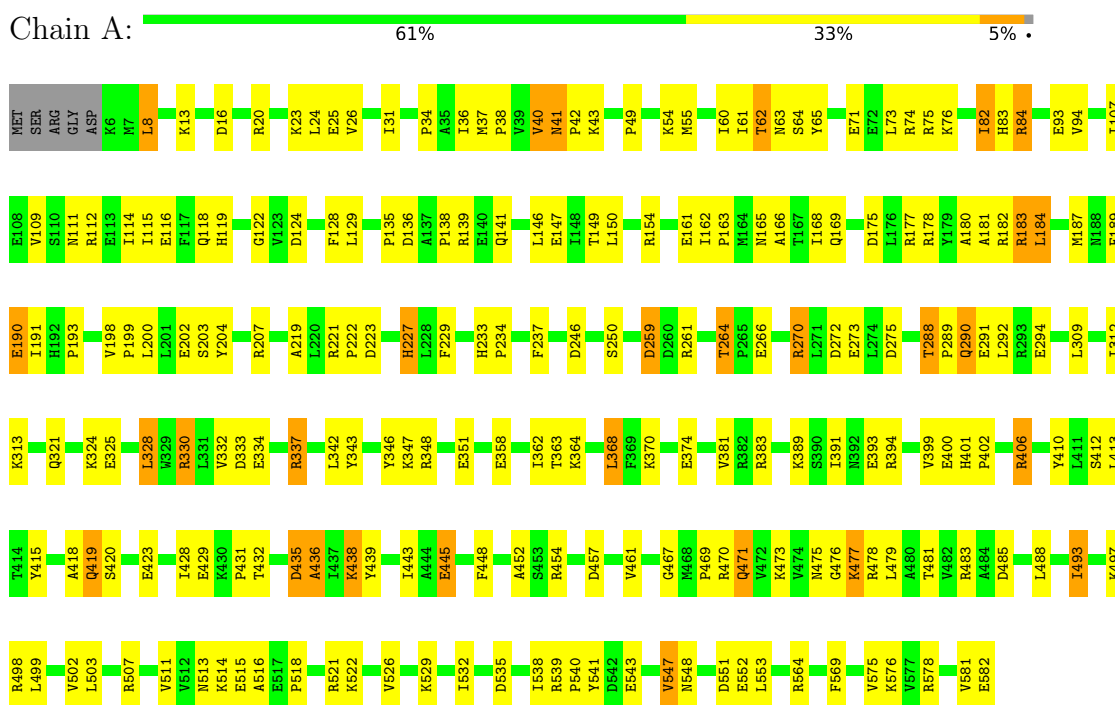
Mol	Chain	Residues	Atoms		ZeroOcc	AltConf
			Total	O		
5	A	105	105	105	0	0
5	B	79	79	79	0	0

3 Residue-property plots

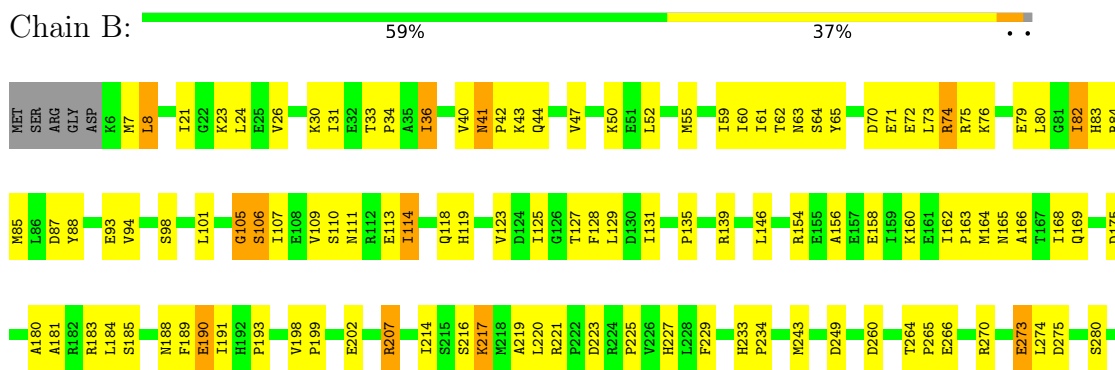
These plots are drawn for all protein, RNA, DNA and oligosaccharide chains in the entry. The first graphic for a chain summarises the proportions of the various outlier classes displayed in the second graphic. The second graphic shows the sequence view annotated by issues in geometry. Residues are color-coded according to the number of geometric quality criteria for which they contain at least one outlier: green = 0, yellow = 1, orange = 2 and red = 3 or more. Stretches of 2 or more consecutive residues without any outlier are shown as a green connector. Residues present in the sample, but not in the model, are shown in grey.

Note EDS was not executed.

- Molecule 1: Archaeosine tRNA-guanine transglycosylase



- Molecule 1: Archaeosine tRNA-guanine transglycosylase





4 Data and refinement statistics

Xtrriage (Phenix) and EDS were not executed - this section is therefore incomplete.

Property	Value	Source
Space group	P 43 21 2	Depositor
Cell constants a, b, c, α , β , γ	100.20Å 100.20Å 364.66Å 90.00° 90.00° 90.00°	Depositor
Resolution (Å)	50.00 – 2.30	Depositor
% Data completeness (in resolution range)	98.3 (50.00-2.30)	Depositor
R_{merge}	0.11	Depositor
R_{sym}	0.11	Depositor
Refinement program	CNS	Depositor
R, R_{free}	0.229 , 0.271	Depositor
Estimated twinning fraction	No twinning to report.	Xtrriage
Total number of atoms	9503	wwPDB-VP
Average B, all atoms (Å ²)	35.0	wwPDB-VP

5 Model quality [i](#)

5.1 Standard geometry [i](#)

Bond lengths and bond angles in the following residue types are not validated in this section: MG, GUN, ZN

The Z score for a bond length (or angle) is the number of standard deviations the observed value is removed from the expected value. A bond length (or angle) with $|Z| > 5$ is considered an outlier worth inspection. RMSZ is the root-mean-square of all Z scores of the bond lengths (or angles).

Mol	Chain	Bond lengths		Bond angles	
		RMSZ	# Z >5	RMSZ	# Z >5
1	A	0.38	0/4745	0.63	0/6391
1	B	0.36	0/4745	0.62	0/6391
All	All	0.37	0/9490	0.63	0/12782

There are no bond length outliers.

There are no bond angle outliers.

There are no chirality outliers.

There are no planarity outliers.

5.2 Too-close contacts [i](#)

In the following table, the Non-H and H(model) columns list the number of non-hydrogen atoms and hydrogen atoms in the chain respectively. The H(added) column lists the number of hydrogen atoms added and optimized by MolProbity. The Clashes column lists the number of clashes within the asymmetric unit, whereas Symm-Clashes lists symmetry-related clashes.

Mol	Chain	Non-H	H(model)	H(added)	Clashes	Symm-Clashes
1	A	4652	0	4747	193	0
1	B	4652	0	4747	208	0
2	A	1	0	0	0	0
2	B	1	0	0	0	0
3	A	1	0	0	0	0
3	B	1	0	0	0	0
4	A	11	0	5	0	0
5	A	105	0	0	4	0
5	B	79	0	0	3	0
All	All	9503	0	9499	395	0

The all-atom clashscore is defined as the number of clashes found per 1000 atoms (including

hydrogen atoms). The all-atom clashscore for this structure is 21.

All (395) close contacts within the same asymmetric unit are listed below, sorted by their clash magnitude.

Atom-1	Atom-2	Interatomic distance (Å)	Clash overlap (Å)
1:A:84:ARG:HA	1:A:84:ARG:HH11	1.16	1.04
1:B:264:THR:HG22	1:B:266:GLU:H	1.24	1.03
1:B:514:LYS:H	1:B:514:LYS:HD2	1.24	0.99
1:A:471:GLN:HG2	1:A:473:LYS:HE3	1.47	0.96
1:A:503:LEU:HD22	1:A:507:ARG:HH21	1.26	0.95
1:B:290:GLN:H	1:B:290:GLN:HE21	1.10	0.95
1:A:477:LYS:HD3	1:A:478:ARG:H	1.34	0.91
1:B:290:GLN:H	1:B:290:GLN:NE2	1.71	0.89
1:A:514:LYS:H	1:A:514:LYS:HD2	1.34	0.89
1:B:111:ASN:HD21	1:B:128:PHE:HB2	1.40	0.86
1:B:82:ILE:HD12	1:B:83:HIS:H	1.41	0.86
1:B:8:LEU:HD22	1:B:26:VAL:HG22	1.56	0.84
1:A:84:ARG:HA	1:A:84:ARG:NH1	1.93	0.83
1:A:111:ASN:HD21	1:A:128:PHE:HB2	1.42	0.83
1:A:119:HIS:HE1	1:A:161:GLU:H	1.26	0.82
1:B:84:ARG:HE	1:B:84:ARG:HA	1.45	0.82
1:B:499:LEU:HB3	1:B:508:MET:HE3	1.63	0.81
1:A:264:THR:HG22	1:A:266:GLU:H	1.45	0.81
1:B:514:LYS:HD2	1:B:514:LYS:N	1.96	0.79
1:B:290:GLN:HE21	1:B:290:GLN:N	1.80	0.79
1:B:295:MET:HE1	1:B:303:LEU:HD12	1.66	0.78
1:A:36:ILE:HD13	1:A:312:ILE:HG21	1.65	0.77
1:A:431:PRO:HG2	1:A:469:PRO:HG3	1.65	0.77
1:A:119:HIS:CE1	1:A:161:GLU:H	2.01	0.77
1:A:183:ARG:HB3	1:A:183:ARG:NH1	2.01	0.75
1:A:518:PRO:O	1:A:522:LYS:HD3	1.87	0.75
1:A:503:LEU:CD2	1:A:507:ARG:HH21	2.00	0.74
1:A:264:THR:CG2	1:A:266:GLU:H	2.01	0.73
1:B:470:ARG:HH12	1:B:484:ALA:HA	1.54	0.73
1:A:275:ASP:OD1	1:B:324:LYS:HG2	1.89	0.72
1:A:288:THR:HG22	1:A:291:GLU:H	1.55	0.72
1:A:362:ILE:HD13	1:A:539:ARG:HB2	1.71	0.71
1:A:514:LYS:HD2	1:A:514:LYS:N	2.04	0.71
1:A:521:ARG:HB3	1:A:582:GLU:HG2	1.71	0.71
1:B:473:LYS:HG2	1:B:478:ARG:HA	1.70	0.71
1:B:82:ILE:HD12	1:B:83:HIS:N	2.06	0.71
1:A:432:THR:OG1	1:A:435:ASP:HB2	1.90	0.70
1:A:40:VAL:HG23	1:A:62:THR:HG23	1.73	0.70

Continued on next page...

Continued from previous page...

Atom-1	Atom-2	Interatomic distance (Å)	Clash overlap (Å)
1:A:477:LYS:HD3	1:A:478:ARG:N	2.06	0.70
1:B:110:SER:OG	1:B:113:GLU:HG3	1.91	0.70
1:B:114:ILE:HD11	1:B:129:LEU:HG	1.72	0.70
1:B:535:ASP:HB3	1:B:538:ILE:HG13	1.74	0.70
1:B:114:ILE:O	1:B:118:GLN:HG3	1.91	0.70
1:A:514:LYS:H	1:A:514:LYS:CD	2.05	0.69
1:B:406:ARG:HD3	1:B:406:ARG:N	2.05	0.69
1:B:84:ARG:HA	1:B:84:ARG:NE	2.07	0.69
1:A:288:THR:CG2	1:A:290:GLN:HG2	2.23	0.68
1:A:471:GLN:OE1	1:A:478:ARG:HD3	1.93	0.68
1:A:183:ARG:HB3	1:A:183:ARG:HH11	1.57	0.68
1:A:348:ARG:HD3	5:A:683:HOH:O	1.92	0.68
1:A:576:LYS:HB2	1:A:576:LYS:NZ	2.09	0.68
1:B:321:GLN:O	1:B:325:GLU:HG3	1.94	0.67
1:B:295:MET:CE	1:B:303:LEU:HD12	2.24	0.67
1:B:105:GLY:O	1:B:106:SER:HB3	1.94	0.67
1:A:270:ARG:O	1:A:273:GLU:HG2	1.94	0.67
1:B:207:ARG:HH11	1:B:207:ARG:HB3	1.60	0.67
1:A:71:GLU:HG2	1:A:75:ARG:HH12	1.59	0.67
1:A:406:ARG:HD3	1:A:406:ARG:N	2.08	0.66
1:B:406:ARG:HD3	1:B:406:ARG:H	1.60	0.66
1:B:156:ALA:O	1:B:160:LYS:HB2	1.96	0.65
1:B:514:LYS:H	1:B:514:LYS:CD	2.03	0.65
1:A:362:ILE:HD12	1:A:383:ARG:NH1	2.12	0.64
1:B:41:ASN:HB3	1:B:44:GLN:O	1.97	0.64
1:B:288:THR:HG23	1:B:291:GLU:H	1.62	0.64
1:A:330:ARG:NH2	1:A:334:GLU:OE2	2.30	0.64
1:B:469:PRO:O	1:B:470:ARG:HD3	1.98	0.64
1:A:410:TYR:CE2	1:A:438:LYS:HB3	2.34	0.63
1:B:470:ARG:NH1	1:B:484:ALA:HA	2.13	0.63
1:A:415:TYR:HA	1:A:419:GLN:HG2	1.80	0.63
1:A:8:LEU:HG	1:A:190:GLU:HB2	1.81	0.63
1:A:109:VAL:HG21	1:A:114:ILE:HG23	1.80	0.62
1:A:112:ARG:O	1:A:116:GLU:HG3	1.99	0.62
1:B:217:LYS:HD3	1:B:243:MET:O	1.98	0.62
1:B:23:LYS:CE	1:B:30:LYS:HD3	2.29	0.62
1:A:264:THR:HG22	1:A:266:GLU:N	2.13	0.62
1:B:273:GLU:O	1:B:273:GLU:HG2	1.98	0.62
1:B:525:ASP:HA	1:B:577:VAL:HG23	1.81	0.62
1:B:40:VAL:O	1:B:62:THR:HG23	1.99	0.62
1:B:339:HIS:ND1	1:B:340:PRO:HD2	2.13	0.62

Continued on next page...

Continued from previous page...

Atom-1	Atom-2	Interatomic distance (Å)	Clash overlap (Å)
1:B:131:ILE:O	1:B:169:GLN:HG2	2.00	0.62
1:B:64:SER:HB3	1:B:94:VAL:CG2	2.29	0.61
1:A:40:VAL:O	1:A:62:THR:HG23	2.01	0.61
1:A:436:ALA:HB1	1:A:461:VAL:HB	1.81	0.61
1:B:510:VAL:HG13	1:B:546:VAL:HA	1.83	0.61
1:A:321:GLN:O	1:A:325:GLU:HG2	1.99	0.61
1:B:70:ASP:OD1	1:B:73:LEU:HD13	2.01	0.61
1:B:394:ARG:HD2	1:B:395:PHE:CE1	2.36	0.61
1:A:111:ASN:ND2	1:A:129:LEU:H	1.97	0.60
1:A:412:SER:O	1:A:418:ALA:HB2	2.01	0.60
1:B:473:LYS:HE2	1:B:478:ARG:HB2	1.83	0.60
1:B:42:PRO:HG3	1:B:62:THR:HG21	1.83	0.60
1:B:260:ASP:OD1	1:B:300:ARG:HD2	2.01	0.60
1:B:413:LEU:HD23	1:B:428:ILE:HG21	1.83	0.59
1:B:288:THR:HG22	1:B:291:GLU:CG	2.32	0.59
1:A:36:ILE:HD13	1:A:312:ILE:CG2	2.32	0.59
1:B:139:ARG:HG2	1:B:139:ARG:HH11	1.68	0.59
1:A:333:ASP:O	1:A:337:ARG:HD3	2.03	0.59
1:A:111:ASN:HD22	1:A:129:LEU:H	1.51	0.59
1:B:52:LEU:HD23	1:B:55:MET:HE3	1.85	0.59
1:B:111:ASN:ND2	1:B:129:LEU:H	1.99	0.59
1:A:41:ASN:ND2	1:A:43:LYS:H	2.01	0.58
1:B:8:LEU:CD2	1:B:26:VAL:HG22	2.33	0.58
1:B:483:ARG:NH1	1:B:488:LEU:HB2	2.17	0.58
1:B:573:ARG:HH12	1:B:576:LYS:HE2	1.67	0.58
1:B:274:LEU:O	1:B:293:ARG:NH2	2.36	0.58
1:A:368:LEU:HD11	1:A:381:VAL:HG22	1.85	0.58
1:B:503:LEU:HD12	1:B:508:MET:CE	2.33	0.58
1:B:98:SER:O	1:B:101:LEU:HB2	2.04	0.58
1:A:8:LEU:HD22	1:A:26:VAL:HG22	1.84	0.58
1:A:163:PRO:HB3	1:A:190:GLU:HG3	1.85	0.57
1:A:548:ASN:HD21	1:A:552:GLU:HB2	1.69	0.57
1:B:101:LEU:HD12	1:B:107:ILE:HG23	1.87	0.57
1:B:185:SER:HB3	1:B:221:ARG:HG3	1.85	0.57
1:B:498:ARG:O	1:B:502:VAL:HG23	2.04	0.57
1:A:13:LYS:HD2	1:A:23:LYS:HB2	1.86	0.57
1:A:61:ILE:HA	1:A:93:GLU:O	2.04	0.57
1:B:70:ASP:O	1:B:74:ARG:HB2	2.04	0.57
1:B:93:GLU:HG3	1:B:125:ILE:HB	1.85	0.57
1:A:42:PRO:HG3	1:A:62:THR:CG2	2.35	0.57
1:B:193:PRO:HA	1:B:227:HIS:O	2.05	0.57

Continued on next page...

Continued from previous page...

Atom-1	Atom-2	Interatomic distance (Å)	Clash overlap (Å)
1:B:76:LYS:HB2	1:B:85:MET:HE3	1.87	0.56
1:A:139:ARG:NH2	1:A:175:ASP:OD2	2.38	0.56
1:A:36:ILE:HD11	1:A:250:SER:HB2	1.88	0.56
1:A:83:HIS:HD2	5:A:640:HOH:O	1.88	0.56
1:B:227:HIS:HE1	1:B:249:ASP:OD2	1.89	0.56
1:A:183:ARG:HH11	1:A:183:ARG:CB	2.18	0.55
1:A:431:PRO:HG2	1:A:469:PRO:CG	2.34	0.55
1:B:105:GLY:O	1:B:106:SER:CB	2.54	0.55
1:B:419:GLN:HB2	5:B:669:HOH:O	2.05	0.55
1:B:41:ASN:HD22	1:B:42:PRO:CD	2.19	0.55
1:B:264:THR:HG22	1:B:266:GLU:N	2.07	0.55
1:A:190:GLU:N	1:A:190:GLU:CD	2.59	0.55
1:B:114:ILE:CD1	1:B:129:LEU:HG	2.37	0.55
1:A:114:ILE:HD12	1:A:115:ILE:N	2.20	0.55
1:A:288:THR:HG22	1:A:291:GLU:N	2.22	0.55
1:A:521:ARG:HB3	1:A:582:GLU:CG	2.36	0.55
1:B:41:ASN:HD22	1:B:42:PRO:HD2	1.72	0.55
1:A:290:GLN:CD	1:A:290:GLN:H	2.11	0.54
1:B:119:HIS:HD2	1:B:162:ILE:HD12	1.72	0.54
1:A:178:ARG:HB3	1:A:182:ARG:HH21	1.73	0.54
1:A:330:ARG:NH2	1:B:266:GLU:HG2	2.23	0.54
1:A:548:ASN:ND2	1:A:552:GLU:HB2	2.23	0.54
1:A:270:ARG:HB3	1:A:272:ASP:OD1	2.07	0.54
1:A:513:ASN:HD22	1:A:515:GLU:H	1.55	0.54
1:A:288:THR:HG23	1:A:290:GLN:HG2	1.89	0.54
1:A:288:THR:HG21	1:A:290:GLN:HG2	1.89	0.53
1:A:42:PRO:HG3	1:A:62:THR:HG21	1.90	0.53
1:B:42:PRO:HG3	1:B:62:THR:CG2	2.38	0.53
1:A:553:LEU:O	1:A:581:VAL:HG21	2.07	0.53
1:A:107:ILE:HG22	5:A:685:HOH:O	2.08	0.53
1:B:23:LYS:HE3	1:B:30:LYS:HD3	1.91	0.53
1:A:493:ILE:HG23	1:A:497:LYS:HE3	1.91	0.53
1:B:64:SER:HB3	1:B:94:VAL:HG21	1.89	0.53
1:A:337:ARG:HD2	1:A:337:ARG:N	2.22	0.53
1:B:165:ASN:HB3	1:B:193:PRO:HG2	1.90	0.52
1:B:339:HIS:CE1	1:B:340:PRO:HD2	2.44	0.52
1:B:507:ARG:O	1:B:509:ARG:HD2	2.10	0.52
1:A:415:TYR:HB2	1:A:419:GLN:HG3	1.91	0.52
1:A:198:VAL:O	1:A:202:GLU:HG3	2.09	0.52
1:B:499:LEU:HB3	1:B:508:MET:CE	2.38	0.52
1:A:40:VAL:O	1:A:62:THR:CG2	2.57	0.51

Continued on next page...

Continued from previous page...

Atom-1	Atom-2	Interatomic distance (Å)	Clash overlap (Å)
1:B:65:TYR:CZ	1:B:107:ILE:HB	2.45	0.51
1:B:207:ARG:HB3	1:B:207:ARG:NH1	2.26	0.51
1:A:8:LEU:CD2	1:A:26:VAL:HG22	2.40	0.51
1:B:386:GLU:HA	1:B:389:LYS:NZ	2.24	0.51
1:B:8:LEU:HG	1:B:190:GLU:HB2	1.92	0.51
1:A:503:LEU:HD22	1:A:507:ARG:NH2	2.09	0.51
1:B:74:ARG:HG3	1:B:74:ARG:NH1	2.25	0.51
1:B:109:VAL:HG21	1:B:114:ILE:HG23	1.93	0.51
1:B:119:HIS:HA	1:B:162:ILE:HD12	1.91	0.51
1:A:111:ASN:HD22	1:A:129:LEU:HB2	1.76	0.50
1:A:193:PRO:HA	1:A:227:HIS:O	2.11	0.50
1:A:526:VAL:HB	1:A:575:VAL:HB	1.93	0.50
1:A:337:ARG:N	1:A:337:ARG:CD	2.74	0.50
1:B:343:TYR:CZ	1:B:347:LYS:HD2	2.46	0.50
1:B:391:ILE:N	1:B:391:ILE:HD12	2.27	0.50
1:A:454:ARG:HA	1:A:457:ASP:OD2	2.10	0.50
1:B:461:VAL:HG11	1:B:469:PRO:HB3	1.93	0.50
1:A:540:PRO:O	1:A:541:TYR:HB2	2.11	0.50
1:B:162:ILE:HG22	1:B:163:PRO:O	2.12	0.50
1:B:474:VAL:O	1:B:477:LYS:HG2	2.12	0.50
1:A:41:ASN:C	1:A:41:ASN:HD22	2.14	0.50
1:A:223:ASP:HA	1:A:569:PHE:CZ	2.46	0.50
1:B:70:ASP:CG	1:B:73:LEU:HD13	2.32	0.50
1:B:127:THR:N	1:B:164:MET:HE2	2.27	0.50
1:B:397:GLU:CB	1:B:409:ARG:HG2	2.41	0.50
1:B:73:LEU:N	1:B:73:LEU:HD12	2.27	0.50
1:B:190:GLU:CD	1:B:190:GLU:N	2.66	0.50
1:B:368:LEU:HD11	1:B:381:VAL:HG22	1.93	0.50
1:B:466:THR:O	1:B:468:MET:N	2.40	0.50
1:A:511:VAL:HG12	1:A:532:ILE:HD11	1.94	0.49
1:B:190:GLU:O	1:B:225:PRO:HD2	2.12	0.49
1:A:82:ILE:HD11	1:A:122:GLY:C	2.33	0.49
1:B:437:ILE:HG23	1:B:438:LYS:N	2.25	0.49
1:A:16:ASP:OD1	1:A:364:LYS:HE2	2.12	0.49
1:B:431:PRO:HD2	1:B:467:GLY:O	2.10	0.49
1:A:24:LEU:HD23	1:A:25:GLU:N	2.28	0.49
1:A:576:LYS:HB2	1:A:576:LYS:HZ3	1.76	0.49
1:B:529:LYS:HE3	1:B:530:PHE:CE1	2.47	0.49
1:A:154:ARG:HA	1:A:187:MET:HE3	1.94	0.49
1:B:330:ARG:NH2	1:B:334:GLU:OE2	2.45	0.49
1:B:483:ARG:HH12	1:B:488:LEU:HB2	1.76	0.49

Continued on next page...

Continued from previous page...

Atom-1	Atom-2	Interatomic distance (Å)	Clash overlap (Å)
1:B:74:ARG:HG3	1:B:74:ARG:HH11	1.76	0.49
1:B:131:ILE:O	1:B:169:GLN:CG	2.61	0.49
1:B:288:THR:HG22	1:B:291:GLU:HB2	1.94	0.49
1:A:324:LYS:HG2	1:B:275:ASP:OD1	2.13	0.49
1:B:163:PRO:HB3	1:B:190:GLU:HG3	1.95	0.49
1:A:270:ARG:HB2	1:A:270:ARG:HH11	1.78	0.49
1:B:373:ASN:HD22	1:B:377:ARG:HH12	1.61	0.49
1:A:190:GLU:CD	1:A:190:GLU:H	2.17	0.48
1:B:503:LEU:HD12	1:B:508:MET:HE1	1.95	0.48
1:B:62:THR:HG22	1:B:63:ASN:H	1.78	0.48
1:A:259:ASP:HB3	1:A:261:ARG:HG3	1.95	0.48
1:B:135:PRO:HG2	1:B:199:PRO:HB2	1.94	0.48
1:B:288:THR:HG22	1:B:291:GLU:CD	2.33	0.48
1:A:165:ASN:HD22	1:A:191:ILE:HB	1.78	0.48
1:A:535:ASP:HB3	1:A:538:ILE:HG13	1.96	0.48
1:A:348:ARG:NH1	1:A:351:GLU:OE1	2.46	0.48
1:B:165:ASN:HD22	1:B:191:ILE:HB	1.78	0.48
1:B:562:SER:OG	1:B:565:GLU:HG3	2.14	0.48
1:A:432:THR:H	1:A:435:ASP:CB	2.26	0.48
1:B:526:VAL:HB	1:B:575:VAL:HB	1.95	0.48
1:A:82:ILE:HD11	1:A:122:GLY:O	2.14	0.48
1:B:33:THR:HA	1:B:34:PRO:C	2.34	0.48
1:B:511:VAL:HG12	1:B:532:ILE:HD11	1.95	0.48
1:A:270:ARG:HH11	1:A:270:ARG:CB	2.27	0.47
1:B:280:SER:O	1:B:285:SER:HB3	2.14	0.47
1:B:431:PRO:HG3	1:B:439:TYR:CE2	2.49	0.47
1:B:119:HIS:HB3	5:B:634:HOH:O	2.14	0.47
1:A:55:MET:O	1:A:313:LYS:HE3	2.14	0.47
1:A:198:VAL:HB	1:A:199:PRO:HD3	1.97	0.47
1:B:503:LEU:HD12	1:B:508:MET:HE2	1.96	0.47
1:B:547:VAL:HG22	1:B:552:GLU:N	2.29	0.47
1:A:64:SER:HB3	1:A:94:VAL:HG21	1.96	0.47
1:B:414:THR:HG22	1:B:415:TYR:N	2.30	0.47
1:A:343:TYR:CZ	1:A:347:LYS:HD2	2.49	0.47
1:B:146:LEU:HD21	1:B:180:ALA:HB2	1.96	0.47
1:B:519:PHE:HB3	1:B:524:LYS:HB2	1.96	0.47
1:B:555:ALA:HB2	1:B:580:GLY:HA2	1.97	0.47
1:A:168:ILE:HG23	1:A:180:ALA:HB3	1.96	0.47
1:A:135:PRO:HB3	1:A:200:LEU:HD21	1.97	0.47
1:A:471:GLN:HG2	1:A:473:LYS:CE	2.33	0.47
1:B:343:TYR:CE1	1:B:347:LYS:HD2	2.50	0.47

Continued on next page...

Continued from previous page...

Atom-1	Atom-2	Interatomic distance (Å)	Clash overlap (Å)
1:B:555:ALA:CB	1:B:580:GLY:HA2	2.44	0.47
1:A:169:GLN:O	1:A:177:ARG:HD3	2.15	0.47
1:B:524:LYS:O	1:B:577:VAL:HG21	2.14	0.47
1:A:64:SER:HB3	1:A:94:VAL:CG2	2.45	0.47
1:B:216:SER:O	1:B:220:LEU:HG	2.14	0.47
1:B:160:LYS:HE2	1:B:188:ASN:O	2.15	0.46
1:B:290:GLN:HA	1:B:293:ARG:NH1	2.31	0.46
1:A:362:ILE:HD13	1:A:539:ARG:CB	2.43	0.46
1:A:547:VAL:HG21	1:A:551:ASP:OD2	2.13	0.46
1:B:24:LEU:HB3	1:B:31:ILE:HG22	1.98	0.46
1:A:138:PRO:HD2	1:A:141:GLN:HE21	1.81	0.46
1:A:547:VAL:HG13	1:A:548:ASN:O	2.15	0.46
1:B:21:ILE:HA	1:B:33:THR:O	2.15	0.46
1:B:73:LEU:CD1	1:B:73:LEU:H	2.29	0.46
1:A:478:ARG:HD2	1:A:481:THR:OG1	2.16	0.46
1:B:190:GLU:N	1:B:190:GLU:OE1	2.48	0.46
1:B:198:VAL:O	1:B:202:GLU:HG3	2.15	0.46
1:B:264:THR:HG23	1:B:265:PRO:HD2	1.97	0.46
1:B:437:ILE:CG2	1:B:438:LYS:N	2.79	0.46
1:B:355:PHE:CE1	1:B:359:PHE:HE1	2.34	0.46
1:A:389:LYS:O	1:A:393:GLU:HG3	2.16	0.46
1:A:391:ILE:HD12	1:A:445:GLU:HB3	1.98	0.46
1:A:431:PRO:HG3	1:A:439:TYR:CE2	2.50	0.46
1:B:79:GLU:HG3	1:B:80:LEU:HG	1.97	0.46
1:B:154:ARG:O	1:B:158:GLU:HG3	2.16	0.46
1:B:61:ILE:HA	1:B:93:GLU:O	2.16	0.45
1:B:459:ALA:HA	1:B:474:VAL:HG22	1.98	0.45
1:A:346:TYR:CE2	1:A:374:GLU:HG2	2.51	0.45
1:A:423:GLU:OE2	1:A:423:GLU:N	2.47	0.45
1:B:198:VAL:HB	1:B:199:PRO:HD3	1.97	0.45
1:A:368:LEU:HB3	1:A:420:SER:HB3	1.98	0.45
1:A:391:ILE:CD1	1:A:445:GLU:HB3	2.46	0.45
1:B:335:ARG:HD2	5:B:651:HOH:O	2.15	0.45
1:B:397:GLU:HB2	1:B:409:ARG:HG2	1.98	0.45
1:B:496:ALA:HB2	1:B:556:THR:OG1	2.16	0.45
1:A:165:ASN:ND2	1:A:191:ILE:HB	2.31	0.45
1:A:181:ALA:HB3	1:A:219:ALA:HB3	1.98	0.45
1:B:31:ILE:CD1	1:B:59:ILE:HB	2.47	0.45
1:B:162:ILE:HG23	1:B:163:PRO:HD2	1.98	0.45
1:A:289:PRO:HD2	1:A:290:GLN:OE1	2.16	0.45
1:B:474:VAL:HG12	1:B:475:ASN:ND2	2.31	0.45

Continued on next page...

Continued from previous page...

Atom-1	Atom-2	Interatomic distance (Å)	Clash overlap (Å)
1:B:413:LEU:HD23	1:B:428:ILE:CG2	2.46	0.45
1:B:436:ALA:HB1	1:B:461:VAL:HB	1.98	0.45
1:B:503:LEU:HA	1:B:504:PRO:HD3	1.80	0.45
1:A:476:GLY:O	1:A:477:LYS:O	2.35	0.45
1:B:439:TYR:O	1:B:443:ILE:HG13	2.17	0.45
1:A:483:ARG:NH2	1:A:543:GLU:OE2	2.50	0.45
1:A:513:ASN:HB3	1:A:516:ALA:H	1.82	0.45
1:A:24:LEU:HD23	1:A:24:LEU:C	2.36	0.45
1:A:270:ARG:HB2	1:A:273:GLU:HG2	1.99	0.45
1:B:288:THR:HG22	1:B:291:GLU:CB	2.47	0.45
1:A:180:ALA:O	1:A:184:LEU:HD22	2.17	0.44
1:A:578:ARG:HG2	1:A:578:ARG:HH11	1.81	0.44
1:B:41:ASN:ND2	1:B:43:LYS:H	2.15	0.44
1:B:50:LYS:HD3	1:B:87:ASP:OD2	2.18	0.44
1:B:181:ALA:HB3	1:B:219:ALA:HB3	1.98	0.44
1:B:223:ASP:HA	1:B:569:PHE:CZ	2.52	0.44
1:A:343:TYR:CE1	1:A:347:LYS:HD2	2.52	0.44
1:B:415:TYR:CD1	1:B:416:PRO:HA	2.53	0.44
1:B:499:LEU:HD22	1:B:508:MET:HE1	1.99	0.44
1:A:432:THR:H	1:A:435:ASP:HB2	1.81	0.44
1:A:448:PHE:HB2	1:A:452:ALA:CB	2.48	0.44
1:B:47:VAL:HG21	1:B:52:LEU:HD21	1.99	0.44
1:A:41:ASN:HD22	1:A:42:PRO:N	2.16	0.44
1:A:419:GLN:CA	1:A:419:GLN:HE21	2.31	0.44
1:A:399:VAL:HG22	1:A:400:GLU:N	2.33	0.44
1:A:166:ALA:HB2	1:A:189:PHE:CG	2.53	0.43
1:A:368:LEU:HB3	1:A:420:SER:CB	2.48	0.43
1:B:7:MET:CB	1:B:163:PRO:HG3	2.48	0.43
1:B:154:ARG:HH11	1:B:183:ARG:HH22	1.65	0.43
1:A:233:HIS:HA	1:A:234:PRO:HD3	1.88	0.43
1:A:328:LEU:HD22	1:A:332:VAL:HG23	1.99	0.43
1:B:529:LYS:HE3	1:B:530:PHE:CZ	2.54	0.43
1:B:64:SER:HB3	1:B:94:VAL:HG22	1.99	0.43
1:B:410:TYR:HD2	1:B:439:TYR:CD1	2.36	0.43
1:A:413:LEU:CD2	1:A:428:ILE:HD12	2.48	0.43
1:A:34:PRO:HA	1:A:246:ASP:O	2.19	0.43
1:B:431:PRO:HG3	1:B:439:TYR:CZ	2.53	0.43
1:B:448:PHE:HB2	1:B:452:ALA:CB	2.48	0.43
1:B:474:VAL:C	1:B:476:GLY:H	2.22	0.43
1:A:42:PRO:HG3	1:A:62:THR:HG22	2.01	0.43
1:A:406:ARG:N	1:A:406:ARG:CD	2.80	0.43

Continued on next page...

Continued from previous page...

Atom-1	Atom-2	Interatomic distance (Å)	Clash overlap (Å)
1:B:362:ILE:HG22	1:B:541:TYR:HB2	2.01	0.43
1:A:362:ILE:HG22	1:A:363:THR:HG22	2.00	0.43
1:B:60:ILE:HG12	1:B:88:TYR:CE2	2.53	0.43
1:A:83:HIS:CE1	1:A:124:ASP:OD2	2.72	0.43
1:A:150:LEU:O	1:A:154:ARG:HG3	2.18	0.43
1:B:41:ASN:HD22	1:B:42:PRO:N	2.17	0.43
1:B:73:LEU:N	1:B:73:LEU:CD1	2.82	0.43
1:B:292:LEU:HD22	1:B:295:MET:HE1	2.00	0.43
1:B:288:THR:HG23	1:B:290:GLN:HG2	1.99	0.43
1:A:24:LEU:HB3	1:A:31:ILE:HG22	2.01	0.43
1:A:38:PRO:HD2	1:A:60:ILE:HG22	2.01	0.43
1:B:466:THR:C	1:B:468:MET:H	2.20	0.43
1:A:178:ARG:HB3	1:A:182:ARG:NH2	2.32	0.42
1:A:42:PRO:HB2	1:A:73:LEU:HD13	2.01	0.42
1:A:266:GLU:HG2	1:B:330:ARG:HH22	1.84	0.42
1:B:292:LEU:HD13	1:B:295:MET:HE2	2.02	0.42
1:A:401:HIS:HA	1:A:402:PRO:HD3	1.88	0.42
1:A:423:GLU:HG3	1:B:344:SER:HB2	2.02	0.42
1:B:139:ARG:HG2	1:B:139:ARG:NH1	2.34	0.42
1:A:578:ARG:HD2	5:A:646:HOH:O	2.19	0.42
1:A:83:HIS:HE1	1:A:124:ASP:OD2	2.03	0.42
1:A:147:GLU:OE2	1:A:147:GLU:HA	2.19	0.42
1:A:221:ARG:HA	1:A:222:PRO:HD3	1.79	0.42
1:A:348:ARG:HD2	1:A:351:GLU:OE1	2.20	0.42
1:B:168:ILE:HD12	1:B:168:ILE:N	2.34	0.42
1:B:370:LYS:HD3	1:B:376:LEU:HD21	2.02	0.42
1:A:507:ARG:HA	1:A:535:ASP:OD2	2.20	0.42
1:B:473:LYS:HG2	1:B:478:ARG:CA	2.43	0.42
1:A:55:MET:HE1	1:A:309:LEU:HD13	2.02	0.41
1:A:63:ASN:OD1	1:A:65:TYR:HB3	2.20	0.41
1:A:266:GLU:HG2	1:B:330:ARG:NH2	2.35	0.41
1:A:358:GLU:OE2	1:A:564:ARG:HD3	2.20	0.41
1:A:483:ARG:NH1	1:A:488:LEU:HB2	2.35	0.41
1:B:270:ARG:NH2	1:B:273:GLU:HB2	2.35	0.41
1:A:493:ILE:O	1:A:497:LYS:HG3	2.21	0.41
1:B:71:GLU:O	1:B:75:ARG:HG3	2.20	0.41
1:B:292:LEU:CD1	1:B:300:ARG:HG3	2.50	0.41
1:A:37:MET:HB2	1:A:60:ILE:HA	2.02	0.41
1:B:82:ILE:HA	1:B:85:MET:HB3	2.01	0.41
1:B:119:HIS:CD2	1:B:162:ILE:HB	2.56	0.41
1:B:166:ALA:HB2	1:B:189:PHE:CG	2.56	0.41

Continued on next page...

Continued from previous page...

Atom-1	Atom-2	Interatomic distance (Å)	Clash overlap (Å)
1:B:430:LYS:HA	1:B:431:PRO:HD3	1.83	0.41
1:B:521:ARG:HB3	1:B:582:GLU:HB3	2.01	0.41
1:A:54:LYS:NZ	1:A:54:LYS:HB2	2.35	0.41
1:A:362:ILE:HD12	1:A:362:ILE:HA	1.90	0.41
1:A:76:LYS:HE3	1:A:76:LYS:HB2	1.85	0.41
1:A:410:TYR:HE2	1:A:435:ASP:OD1	2.04	0.41
1:B:36:ILE:HG22	1:B:316:ILE:HG13	2.02	0.41
1:A:36:ILE:HD12	1:A:237:PHE:CZ	2.56	0.41
1:A:36:ILE:HG21	1:A:312:ILE:CG2	2.51	0.41
1:A:399:VAL:O	1:A:406:ARG:HA	2.20	0.41
1:A:436:ALA:O	1:A:439:TYR:HB2	2.21	0.41
1:B:214:ILE:HD12	1:B:355:PHE:CD2	2.56	0.41
1:B:395:PHE:HB3	1:B:410:TYR:CD1	2.56	0.41
1:A:114:ILE:O	1:A:118:GLN:HG3	2.20	0.41
1:A:203:SER:O	1:A:204:TYR:HB2	2.20	0.41
1:B:7:MET:HB3	1:B:163:PRO:HG3	2.02	0.41
1:A:454:ARG:NH1	1:A:502:VAL:HG13	2.36	0.40
1:A:469:PRO:O	1:A:470:ARG:NH1	2.50	0.40
1:B:62:THR:HG22	1:B:63:ASN:N	2.37	0.40
1:A:431:PRO:HD2	1:A:467:GLY:O	2.21	0.40
1:A:119:HIS:CE1	1:A:162:ILE:HG23	2.56	0.40
1:B:217:LYS:HE2	1:B:217:LYS:HB3	1.97	0.40
1:B:233:HIS:HA	1:B:234:PRO:HD3	1.96	0.40
1:A:439:TYR:O	1:A:443:ILE:HG13	2.22	0.40
1:A:479:LEU:HD22	1:A:498:ARG:HD2	2.03	0.40
1:B:76:LYS:HB2	1:B:85:MET:CE	2.50	0.40
1:A:146:LEU:O	1:A:149:THR:HB	2.22	0.40
1:B:493:ILE:O	1:B:497:LYS:HG3	2.21	0.40
1:B:519:PHE:H	1:B:519:PHE:HD1	1.69	0.40

There are no symmetry-related clashes.

5.3 Torsion angles

5.3.1 Protein backbone

In the following table, the Percentiles column shows the percent Ramachandran outliers of the chain as a percentile score with respect to all X-ray entries followed by that with respect to entries of similar resolution.

The Analysed column shows the number of residues for which the backbone conformation was analysed, and the total number of residues.

Mol	Chain	Analysed	Favoured	Allowed	Outliers	Percentiles	
1	A	575/582 (99%)	553 (96%)	19 (3%)	3 (0%)	29	35
1	B	575/582 (99%)	542 (94%)	28 (5%)	5 (1%)	17	20
All	All	1150/1164 (99%)	1095 (95%)	47 (4%)	8 (1%)	22	26

All (8) Ramachandran outliers are listed below:

Mol	Chain	Res	Type
1	A	475	ASN
1	A	477	LYS
1	B	82	ILE
1	B	106	SER
1	A	436	ALA
1	B	420	SER
1	B	105	GLY
1	B	467	GLY

5.3.2 Protein sidechains [i](#)

In the following table, the Percentiles column shows the percent sidechain outliers of the chain as a percentile score with respect to all X-ray entries followed by that with respect to entries of similar resolution.

The Analysed column shows the number of residues for which the sidechain conformation was analysed, and the total number of residues.

Mol	Chain	Analysed	Rotameric	Outliers	Percentiles	
1	A	499/503 (99%)	457 (92%)	42 (8%)	11	13
1	B	499/503 (99%)	469 (94%)	30 (6%)	19	26
All	All	998/1006 (99%)	926 (93%)	72 (7%)	14	18

All (72) residues with a non-rotameric sidechain are listed below:

Mol	Chain	Res	Type
1	A	8	LEU
1	A	20	ARG
1	A	40	VAL
1	A	41	ASN
1	A	49	PRO
1	A	62	THR
1	A	74	ARG
1	A	82	ILE

Continued on next page...

Continued from previous page...

Mol	Chain	Res	Type
1	A	84	ARG
1	A	136	ASP
1	A	183	ARG
1	A	184	LEU
1	A	190	GLU
1	A	207	ARG
1	A	227	HIS
1	A	229	PHE
1	A	259	ASP
1	A	264	THR
1	A	270	ARG
1	A	288	THR
1	A	290	GLN
1	A	292	LEU
1	A	294	GLU
1	A	328	LEU
1	A	330	ARG
1	A	337	ARG
1	A	342	LEU
1	A	368	LEU
1	A	370	LYS
1	A	394	ARG
1	A	406	ARG
1	A	419	GLN
1	A	429	GLU
1	A	435	ASP
1	A	438	LYS
1	A	445	GLU
1	A	471	GLN
1	A	485	ASP
1	A	493	ILE
1	A	499	LEU
1	A	529	LYS
1	A	547	VAL
1	B	8	LEU
1	B	36	ILE
1	B	41	ASN
1	B	72	GLU
1	B	74	ARG
1	B	114	ILE
1	B	123	VAL
1	B	175	ASP

Continued on next page...

Continued from previous page...

Mol	Chain	Res	Type
1	B	184	LEU
1	B	190	GLU
1	B	207	ARG
1	B	217	LYS
1	B	229	PHE
1	B	273	GLU
1	B	290	GLN
1	B	292	LEU
1	B	297	LYS
1	B	302	ARG
1	B	328	LEU
1	B	330	ARG
1	B	342	LEU
1	B	365	LYS
1	B	368	LEU
1	B	406	ARG
1	B	434	GLU
1	B	485	ASP
1	B	501	ARG
1	B	522	LYS
1	B	547	VAL
1	B	582	GLU

Sometimes sidechains can be flipped to improve hydrogen bonding and reduce clashes. All (17) such sidechains are listed below:

Mol	Chain	Res	Type
1	A	41	ASN
1	A	83	HIS
1	A	111	ASN
1	A	119	HIS
1	A	141	GLN
1	A	165	ASN
1	A	419	GLN
1	A	513	ASN
1	B	41	ASN
1	B	83	HIS
1	B	111	ASN
1	B	141	GLN
1	B	165	ASN
1	B	227	HIS
1	B	290	GLN
1	B	373	ASN

Continued on next page...

Continued from previous page...

Mol	Chain	Res	Type
1	B	475	ASN

5.3.3 RNA [i](#)

There are no RNA molecules in this entry.

5.4 Non-standard residues in protein, DNA, RNA chains [i](#)

There are no non-standard protein/DNA/RNA residues in this entry.

5.5 Carbohydrates [i](#)

There are no monosaccharides in this entry.

5.6 Ligand geometry [i](#)

Of 5 ligands modelled in this entry, 4 are monoatomic - leaving 1 for Mogul analysis.

In the following table, the Counts columns list the number of bonds (or angles) for which Mogul statistics could be retrieved, the number of bonds (or angles) that are observed in the model and the number of bonds (or angles) that are defined in the Chemical Component Dictionary. The Link column lists molecule types, if any, to which the group is linked. The Z score for a bond length (or angle) is the number of standard deviations the observed value is removed from the expected value. A bond length (or angle) with $|Z| > 2$ is considered an outlier worth inspection. RMSZ is the root-mean-square of all Z scores of the bond lengths (or angles).

Mol	Type	Chain	Res	Link	Bond lengths			Bond angles		
					Counts	RMSZ	# Z > 2	Counts	RMSZ	# Z > 2
4	GUN	A	602	-	7,12,12	1.37	1 (14%)	8,17,17	0.80	0

In the following table, the Chirals column lists the number of chiral outliers, the number of chiral centers analysed, the number of these observed in the model and the number defined in the Chemical Component Dictionary. Similar counts are reported in the Torsion and Rings columns. '-' means no outliers of that kind were identified.

Mol	Type	Chain	Res	Link	Chirals	Torsions	Rings
4	GUN	A	602	-	-	-	0/2/2/2

All (1) bond length outliers are listed below:

Mol	Chain	Res	Type	Atoms	Z	Observed(Å)	Ideal(Å)
4	A	602	GUN	C6-N1	2.76	1.42	1.37

There are no bond angle outliers.

There are no chirality outliers.

There are no torsion outliers.

There are no ring outliers.

No monomer is involved in short contacts.

5.7 Other polymers [i](#)

There are no such residues in this entry.

5.8 Polymer linkage issues [i](#)

There are no chain breaks in this entry.

6 Fit of model and data

6.1 Protein, DNA and RNA chains

EDS was not executed - this section is therefore empty.

6.2 Non-standard residues in protein, DNA, RNA chains

EDS was not executed - this section is therefore empty.

6.3 Carbohydrates

EDS was not executed - this section is therefore empty.

6.4 Ligands

EDS was not executed - this section is therefore empty.

6.5 Other polymers

EDS was not executed - this section is therefore empty.