



Full wwPDB X-ray Structure Validation Report ⓘ

Aug 3, 2023 – 03:50 AM EDT

PDB ID : 1I7J
Title : CRYSTAL STRUCTURE OF 2'-O-ME(CGCGCG)2: AN RNA DUPLEX AT 1.19 Å RESOLUTION. 2-METHYL-2,4-PENTANEDIOL AND MAGNESIUM BINDING.
Authors : Adamiak, D.A.; Rypniewski, W.R.; Milecki, J.; Adamiak, R.W.
Deposited on : 2001-03-09
Resolution : 1.19 Å(reported)

This is a Full wwPDB X-ray Structure Validation Report for a publicly released PDB entry.

We welcome your comments at validation@mail.wwpdb.org

A user guide is available at

<https://www.wwpdb.org/validation/2017/XrayValidationReportHelp>

with specific help available everywhere you see the ⓘ symbol.

The types of validation reports are described at

<http://www.wwpdb.org/validation/2017/FAQs#types>.

The following versions of software and data (see [references ⓘ](#)) were used in the production of this report:

MolProbity : 4.02b-467
Mogul : 1.8.5 (274361), CSD as541be (2020)
Xtriage (Phenix) : 1.13
EDS : 2.34
Percentile statistics : 20191225.v01 (using entries in the PDB archive December 25th 2019)
Refmac : 5.8.0158
CCP4 : 7.0.044 (Gargrove)
Ideal geometry (proteins) : Engh & Huber (2001)
Ideal geometry (DNA, RNA) : Parkinson et al. (1996)
Validation Pipeline (wwPDB-VP) : 2.34

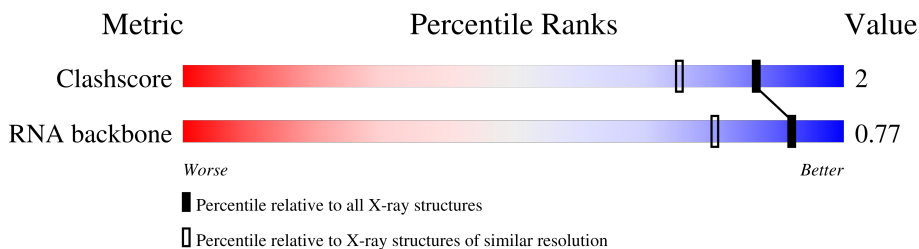
1 Overall quality at a glance

The following experimental techniques were used to determine the structure:

X-RAY DIFFRACTION

The reported resolution of this entry is 1.19 Å.

Percentile scores (ranging between 0-100) for global validation metrics of the entry are shown in the following graphic. The table shows the number of entries on which the scores are based.



Metric	Whole archive (#Entries)	Similar resolution (#Entries, resolution range(Å))
Clashscore	141614	1286 (1.22-1.18)
RNA backbone	3102	1000 (2.34-0.62)

The table below summarises the geometric issues observed across the polymeric chains and their fit to the electron density. The red, orange, yellow and green segments of the lower bar indicate the fraction of residues that contain outliers for ≥ 3 , 2, 1 and 0 types of geometric quality criteria respectively. A grey segment represents the fraction of residues that are not modelled. The numeric value for each fraction is indicated below the corresponding segment, with a dot representing fractions $\leq 5\%$. The upper red bar (where present) indicates the fraction of residues that have poor fit to the electron density. The numeric value is given above the bar.

Mol	Chain	Length	Quality of chain
1	A	6	
1	B	6	

2 Entry composition [i](#)

There are 4 unique types of molecules in this entry. The entry contains 510 atoms, of which 160 are hydrogens and 0 are deuteriums.

In the tables below, the ZeroOcc column contains the number of atoms modelled with zero occupancy, the AltConf column contains the number of residues with at least one atom in alternate conformation and the Trace column contains the number of residues modelled with at most 2 atoms.

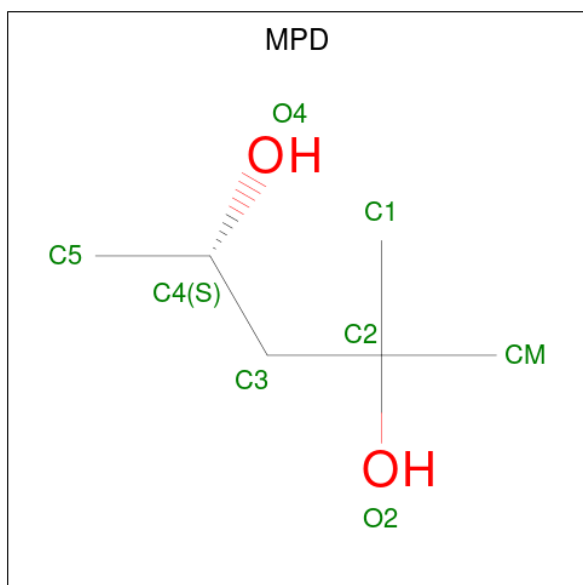
- Molecule 1 is a RNA chain called 5'-R*(OMC)P*(OMG)P*(OMC)P*(OMG)P*(OMC)P*(OMG))-3'.

Mol	Chain	Residues	Atoms					ZeroOcc	AltConf	Trace	
			Total	C	H	N	O				P
1	A	6	Total 212	C 63	H 80	N 24	O 40	P 5	0	0	0
1	B	6	Total 212	C 63	H 80	N 24	O 40	P 5	0	0	0

- Molecule 2 is MAGNESIUM ION (three-letter code: MG) (formula: Mg).

Mol	Chain	Residues	Atoms		ZeroOcc	AltConf
			Total	Mg		
2	A	3	Total 3	Mg 3	0	0
2	B	2	Total 2	Mg 2	0	0

- Molecule 3 is (4S)-2-METHYL-2,4-PENTANEDIOL (three-letter code: MPD) (formula: C₆H₁₄O₂).



Mol	Chain	Residues	Atoms			ZeroOcc	AltConf
3	A	1	Total	C	O	0	0
			8	6	2		
3	B	1	Total	C	O	0	0
			8	6	2		

- Molecule 4 is water.

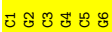
Mol	Chain	Residues	Atoms		ZeroOcc	AltConf
4	A	33	Total	O	0	0
			33	33		
4	B	32	Total	O	0	0
			32	32		

3 Residue-property plots


These plots are drawn for all protein, RNA, DNA and oligosaccharide chains in the entry. The first graphic for a chain summarises the proportions of the various outlier classes displayed in the second graphic. The second graphic shows the sequence view annotated by issues in geometry and electron density. Residues are color-coded according to the number of geometric quality criteria for which they contain at least one outlier: green = 0, yellow = 1, orange = 2 and red = 3 or more. A red dot above a residue indicates a poor fit to the electron density ($RSRZ > 2$). Stretches of 2 or more consecutive residues without any outlier are shown as a green connector. Residues present in the sample, but not in the model, are shown in grey.

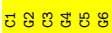
- Molecule 1: 5'-R*(OMC)P*(OMG)P*(OMC)P*(OMG)P*(OMC)P*(OMG))-3'

Chain A:  100%

 5 5 5 5 5 5

- Molecule 1: 5'-R*(OMC)P*(OMG)P*(OMC)P*(OMG)P*(OMC)P*(OMG))-3'

Chain B:  100%

 5 5 5 5 5 5

4 Data and refinement statistics i

Property	Value	Source
Space group	P 32 1 2	Depositor
Cell constants a, b, c, α , β , γ	24.80Å 24.80Å 77.37Å 90.00° 90.00° 120.00°	Depositor
Resolution (Å)	20.00 – 1.19 18.78 – 1.19	Depositor EDS
% Data completeness (in resolution range)	95.8 (20.00-1.19) 90.6 (18.78-1.19)	Depositor EDS
R_{merge}	0.05	Depositor
R_{sym}	(Not available)	Depositor
$\langle I/\sigma(I) \rangle$ ¹	1.92 (at 1.19Å)	Xtrriage
Refinement program	SHELXL-97	Depositor
R, R_{free}	0.155 , (Not available) 0.161 , (Not available)	Depositor DCC
R_{free} test set	No test flags present.	wwPDB-VP
Wilson B-factor (Å ²)	13.0	Xtrriage
Anisotropy	0.199	Xtrriage
Bulk solvent k_{sol} (e/Å ³), B_{sol} (Å ²)	0.35 , 78.2	EDS
L-test for twinning ²	$\langle L \rangle = 0.50$, $\langle L^2 \rangle = 0.33$	Xtrriage
Estimated twinning fraction	0.489 for -h,-k,l	Xtrriage
F_o, F_c correlation	0.98	EDS
Total number of atoms	510	wwPDB-VP
Average B, all atoms (Å ²)	20.0	wwPDB-VP

Xtrriage's analysis on translational NCS is as follows: *The analyses of the Patterson function reveals a significant off-origin peak that is 25.26 % of the origin peak, indicating pseudo-translational symmetry. The chance of finding a peak of this or larger height randomly in a structure without pseudo-translational symmetry is equal to 3.2795e-03. The detected translational NCS is most likely also responsible for the elevated intensity ratio.*

¹Intensities estimated from amplitudes.

²Theoretical values of $\langle |L| \rangle$, $\langle L^2 \rangle$ for acentric reflections are 0.5, 0.333 respectively for untwinned datasets, and 0.375, 0.2 for perfectly twinned datasets.

5 Model quality

5.1 Standard geometry

Bond lengths and bond angles in the following residue types are not validated in this section: MG, MPD, OMC, OMG

The Z score for a bond length (or angle) is the number of standard deviations the observed value is removed from the expected value. A bond length (or angle) with $|Z| > 5$ is considered an outlier worth inspection. RMSZ is the root-mean-square of all Z scores of the bond lengths (or angles).

There are no protein, RNA or DNA chains available to summarize Z scores of covalent bonds and angles.

There are no bond length outliers.

There are no bond angle outliers.

There are no chirality outliers.

There are no planarity outliers.

5.2 Too-close contacts

In the following table, the Non-H and H(model) columns list the number of non-hydrogen atoms and hydrogen atoms in the chain respectively. The H(added) column lists the number of hydrogen atoms added and optimized by MolProbity. The Clashes column lists the number of clashes within the asymmetric unit, whereas Symm-Clashes lists symmetry-related clashes.

Mol	Chain	Non-H	H(model)	H(added)	Clashes	Symm-Clashes
1	A	132	80	79	0	0
1	B	132	80	79	0	0
2	A	3	0	0	0	0
2	B	2	0	0	0	0
3	A	8	0	14	1	0
3	B	8	0	14	0	0
4	A	33	0	0	0	0
4	B	32	0	0	0	0
All	All	350	160	186	1	0

The all-atom clashscore is defined as the number of clashes found per 1000 atoms (including hydrogen atoms). The all-atom clashscore for this structure is 2.

All (1) close contacts within the same asymmetric unit are listed below, sorted by their clash magnitude.

Atom-1	Atom-2	Interatomic distance (Å)	Clash overlap (Å)
3:A:201:MPD:H12	3:A:201:MPD:H4	1.83	0.41

There are no symmetry-related clashes.

5.3 Torsion angles [i](#)

5.3.1 Protein backbone [i](#)

There are no protein molecules in this entry.

5.3.2 Protein sidechains [i](#)

There are no protein molecules in this entry.

5.3.3 RNA [i](#)

Mol	Chain	Analysed	Backbone Outliers	Pucker Outliers
1	A	5/6 (83%)	0	0
1	B	5/6 (83%)	0	0
All	All	10/12 (83%)	0	0

There are no RNA backbone outliers to report.

There are no RNA pucker outliers to report.

5.4 Non-standard residues in protein, DNA, RNA chains [i](#)

12 non-standard protein/DNA/RNA residues are modelled in this entry.

In the following table, the Counts columns list the number of bonds (or angles) for which Mogul statistics could be retrieved, the number of bonds (or angles) that are observed in the model and the number of bonds (or angles) that are defined in the Chemical Component Dictionary. The Link column lists molecule types, if any, to which the group is linked. The Z score for a bond length (or angle) is the number of standard deviations the observed value is removed from the expected value. A bond length (or angle) with $|Z| > 2$ is considered an outlier worth inspection. RMSZ is the root-mean-square of all Z scores of the bond lengths (or angles).

Mol	Type	Chain	Res	Link	Bond lengths			Bond angles		
					Counts	RMSZ	# Z > 2	Counts	RMSZ	# Z > 2
1	OMG	A	6	1	18,26,27	1.06	2 (11%)	19,38,41	1.78	4 (21%)

Mol	Type	Chain	Res	Link	Bond lengths			Bond angles		
					Counts	RMSZ	# Z > 2	Counts	RMSZ	# Z > 2
1	OMC	A	1	1	19,19,23	0.60	0	26,27,34	2.36	8 (30%)
1	OMG	A	4	1	18,26,27	1.14	2 (11%)	19,38,41	1.27	3 (15%)
1	OMC	B	3	1	19,22,23	0.55	0	26,31,34	1.34	3 (11%)
1	OMG	A	2	2,1	18,26,27	1.21	3 (16%)	19,38,41	1.79	6 (31%)
1	OMC	A	3	1	19,22,23	0.62	0	26,31,34	1.39	3 (11%)
1	OMC	B	5	1	19,22,23	0.54	0	26,31,34	1.14	2 (7%)
1	OMG	B	4	1	18,26,27	1.00	2 (11%)	19,38,41	1.44	4 (21%)
1	OMG	B	6	1	18,26,27	1.11	2 (11%)	19,38,41	1.56	3 (15%)
1	OMC	B	1	1	19,19,23	0.72	0	26,27,34	3.24	7 (26%)
1	OMG	B	2	2,1	18,26,27	1.34	5 (27%)	19,38,41	1.25	3 (15%)
1	OMC	A	5	2,1	19,22,23	0.48	0	26,31,34	1.67	7 (26%)

In the following table, the Chirals column lists the number of chiral outliers, the number of chiral centers analysed, the number of these observed in the model and the number defined in the Chemical Component Dictionary. Similar counts are reported in the Torsion and Rings columns. '-' means no outliers of that kind were identified.

Mol	Type	Chain	Res	Link	Chirals	Torsions	Rings
1	OMG	A	6	1	-	0/5/27/28	0/3/3/3
1	OMC	A	1	1	-	1/8/24/28	0/2/2/2
1	OMG	A	4	1	-	0/5/27/28	0/3/3/3
1	OMC	B	3	1	-	0/9/27/28	0/2/2/2
1	OMG	A	2	2,1	-	0/5/27/28	0/3/3/3
1	OMC	A	3	1	-	0/9/27/28	0/2/2/2
1	OMC	B	5	1	-	0/9/27/28	0/2/2/2
1	OMG	B	4	1	-	0/5/27/28	0/3/3/3
1	OMG	B	6	1	-	0/5/27/28	0/3/3/3
1	OMC	B	1	1	-	0/8/24/28	0/2/2/2
1	OMG	B	2	2,1	-	0/5/27/28	0/3/3/3
1	OMC	A	5	2,1	-	0/9/27/28	0/2/2/2

All (16) bond length outliers are listed below:

Mol	Chain	Res	Type	Atoms	Z	Observed(Å)	Ideal(Å)
1	A	2	OMG	C5-C6	-2.80	1.41	1.47
1	A	4	OMG	C5-C6	-2.74	1.41	1.47
1	B	6	OMG	O4'-C1'	2.67	1.44	1.41
1	B	6	OMG	C5-C4	-2.57	1.36	1.43
1	A	2	OMG	C5-C4	-2.57	1.36	1.43
1	A	6	OMG	C5-C6	-2.56	1.42	1.47

Continued on next page...

Continued from previous page...

Mol	Chain	Res	Type	Atoms	Z	Observed(Å)	Ideal(Å)
1	B	4	OMG	C5-C6	-2.51	1.42	1.47
1	B	2	OMG	O4'-C1'	2.48	1.44	1.41
1	B	2	OMG	C5-C6	-2.40	1.42	1.47
1	A	6	OMG	C5-C4	-2.39	1.37	1.43
1	A	4	OMG	C8-N7	-2.33	1.31	1.35
1	B	2	OMG	C6-N1	2.21	1.41	1.37
1	B	4	OMG	C5-C4	-2.21	1.37	1.43
1	A	2	OMG	C6-N1	2.21	1.41	1.37
1	B	2	OMG	C8-N7	-2.13	1.31	1.35
1	B	2	OMG	C5-C4	-2.03	1.37	1.43

All (53) bond angle outliers are listed below:

Mol	Chain	Res	Type	Atoms	Z	Observed(°)	Ideal(°)
1	B	1	OMC	O5'-C5'-C4'	8.40	140.11	111.29
1	B	1	OMC	C3'-C2'-C1'	-7.35	89.08	102.89
1	B	1	OMC	O4'-C1'-C2'	6.46	117.90	106.57
1	A	1	OMC	C3'-C2'-C1'	-6.31	91.02	102.89
1	B	1	OMC	O4'-C4'-C5'	-5.65	97.00	109.21
1	B	1	OMC	C5'-C4'-C3'	-5.61	101.56	115.09
1	B	1	OMC	C4'-O4'-C1'	-5.15	98.10	109.47
1	A	1	OMC	O4'-C1'-C2'	4.94	115.23	106.57
1	A	1	OMC	C5'-C4'-C3'	4.28	125.40	115.09
1	A	3	OMC	C2'-C1'-N1	-4.04	106.38	114.22
1	A	6	OMG	C2'-C3'-C4'	-3.84	93.65	101.99
1	B	3	OMC	O4'-C4'-C3'	-3.66	97.86	105.11
1	A	5	OMC	O4'-C4'-C3'	-3.53	98.12	105.11
1	A	4	OMG	O6-C6-C5	3.39	131.00	124.37
1	A	2	OMG	O6-C6-C5	3.38	130.97	124.37
1	A	1	OMC	C2'-C1'-N1	-3.29	107.83	114.22
1	A	6	OMG	O6-C6-C5	3.26	130.73	124.37
1	A	2	OMG	O4'-C4'-C3'	-3.25	98.69	105.11
1	A	1	OMC	C2'-C3'-C4'	3.25	109.05	101.99
1	B	6	OMG	O6-C6-C5	3.23	130.69	124.37
1	A	5	OMC	C3'-C2'-C1'	-3.23	96.82	102.89
1	A	3	OMC	O3'-C3'-C2'	3.13	120.06	111.17
1	A	1	OMC	O4'-C4'-C3'	-3.11	98.95	105.11
1	B	3	OMC	C3'-C2'-C1'	-3.05	97.15	102.89
1	B	4	OMG	O4'-C4'-C3'	-2.99	99.19	105.11
1	B	4	OMG	CM2-O2'-C2'	-2.97	106.73	114.52
1	A	6	OMG	O3'-C3'-C2'	-2.94	102.83	111.17
1	A	3	OMC	O4'-C4'-C3'	-2.87	99.43	105.11

Continued on next page...

Continued from previous page...

Mol	Chain	Res	Type	Atoms	Z	Observed(°)	Ideal(°)
1	A	5	OMC	C5'-C4'-C3'	2.85	125.86	115.18
1	A	2	OMG	C2'-C3'-C4'	2.77	108.02	101.99
1	B	4	OMG	O6-C6-C5	2.77	129.78	124.37
1	A	5	OMC	C2'-C3'-C4'	2.76	107.98	101.99
1	B	2	OMG	O4'-C4'-C3'	-2.72	99.73	105.11
1	A	2	OMG	C5'-C4'-C3'	2.70	125.29	115.18
1	A	1	OMC	CM2-O2'-C2'	-2.70	107.45	114.52
1	A	5	OMC	C2'-C1'-N1	-2.60	109.18	114.22
1	A	1	OMC	O2'-C2'-C1'	-2.58	104.04	109.08
1	B	2	OMG	O6-C6-C5	2.58	129.41	124.37
1	A	6	OMG	O2'-C2'-C1'	2.55	114.16	109.09
1	B	5	OMC	O2'-C2'-C1'	2.48	113.92	109.08
1	B	6	OMG	O2'-C2'-C1'	-2.44	104.25	109.09
1	A	4	OMG	O6-C6-N1	-2.41	117.81	120.65
1	A	2	OMG	O3'-C3'-C2'	2.40	117.98	111.17
1	B	3	OMC	O5'-C5'-C4'	2.37	117.04	108.99
1	A	5	OMC	CM2-O2'-C2'	-2.31	108.45	114.52
1	B	1	OMC	O3'-C3'-C2'	-2.31	104.61	111.17
1	A	4	OMG	O4'-C4'-C3'	-2.30	100.56	105.11
1	A	2	OMG	O6-C6-N1	-2.27	117.97	120.65
1	B	5	OMC	CM2-O2'-C2'	-2.26	108.60	114.52
1	B	4	OMG	O3'-C3'-C4'	-2.19	104.72	111.05
1	A	5	OMC	O3'-C3'-C2'	2.14	117.24	111.17
1	B	6	OMG	O6-C6-N1	-2.06	118.22	120.65
1	B	2	OMG	C5-C6-N1	-2.04	110.35	113.95

There are no chirality outliers.

All (1) torsion outliers are listed below:

Mol	Chain	Res	Type	Atoms
1	A	1	OMC	C3'-C4'-C5'-O5'

There are no ring outliers.

No monomer is involved in short contacts.

5.5 Carbohydrates [i](#)

There are no monosaccharides in this entry.

5.6 Ligand geometry [i](#)

Of 7 ligands modelled in this entry, 5 are monoatomic - leaving 2 for Mogul analysis.

In the following table, the Counts columns list the number of bonds (or angles) for which Mogul statistics could be retrieved, the number of bonds (or angles) that are observed in the model and the number of bonds (or angles) that are defined in the Chemical Component Dictionary. The Link column lists molecule types, if any, to which the group is linked. The Z score for a bond length (or angle) is the number of standard deviations the observed value is removed from the expected value. A bond length (or angle) with $|Z| > 2$ is considered an outlier worth inspection. RMSZ is the root-mean-square of all Z scores of the bond lengths (or angles).

Mol	Type	Chain	Res	Link	Bond lengths			Bond angles		
					Counts	RMSZ	# Z > 2	Counts	RMSZ	# Z > 2
3	MPD	B	202	-	7,7,7	0.37	0	9,10,10	0.65	0
3	MPD	A	201	-	7,7,7	0.25	0	9,10,10	0.58	0

In the following table, the Chirals column lists the number of chiral outliers, the number of chiral centers analysed, the number of these observed in the model and the number defined in the Chemical Component Dictionary. Similar counts are reported in the Torsion and Rings columns. '-' means no outliers of that kind were identified.

Mol	Type	Chain	Res	Link	Chirals	Torsions	Rings
3	MPD	B	202	-	-	0/5/5/5	-
3	MPD	A	201	-	-	0/5/5/5	-

There are no bond length outliers.

There are no bond angle outliers.

There are no chirality outliers.

There are no torsion outliers.

There are no ring outliers.

1 monomer is involved in 1 short contact:

Mol	Chain	Res	Type	Clashes	Symm-Clashes
3	A	201	MPD	1	0

5.7 Other polymers [i](#)

There are no such residues in this entry.

5.8 Polymer linkage issues

There are no chain breaks in this entry.

6 Fit of model and data [i](#)

6.1 Protein, DNA and RNA chains [i](#)

In the following table, the column labelled '#RSRZ > 2' contains the number (and percentage) of RSRZ outliers, followed by percent RSRZ outliers for the chain as percentile scores relative to all X-ray entries and entries of similar resolution. The OWAB column contains the minimum, median, 95th percentile and maximum values of the occupancy-weighted average B-factor per residue. The column labelled 'Q < 0.9' lists the number of (and percentage) of residues with an average occupancy less than 0.9.

Mol	Chain	Analysed	<RSRZ>	#RSRZ>2	OWAB(Å ²)	Q<0.9
1	A	0/6	-	-	-	-
1	B	0/6	-	-	-	-
All	All	0/12	-	-	-	-

There are no RSRZ outliers to report.

6.2 Non-standard residues in protein, DNA, RNA chains [i](#)

In the following table, the Atoms column lists the number of modelled atoms in the group and the number defined in the chemical component dictionary. The B-factors column lists the minimum, median, 95th percentile and maximum values of B factors of atoms in the group. The column labelled 'Q < 0.9' lists the number of atoms with occupancy less than 0.9.

Mol	Type	Chain	Res	Atoms	RSCC	RSR	B-factors(Å ²)	Q<0.9
1	OMC	B	1	18/22	0.94	0.07	16,21,31,43	0
1	OMG	A	2	24/25	0.96	0.06	14,19,30,30	0
1	OMC	A	1	18/22	0.96	0.06	14,20,35,49	0
1	OMG	B	2	24/25	0.96	0.06	14,19,37,37	0
1	OMG	B	6	24/25	0.97	0.06	12,17,40,40	0
1	OMG	A	6	24/25	0.98	0.05	12,17,33,37	0
1	OMC	B	3	21/22	0.98	0.05	13,18,28,28	0
1	OMC	B	5	21/22	0.98	0.04	12,14,19,19	0
1	OMC	A	3	21/22	0.98	0.04	12,17,28,28	0
1	OMG	B	4	24/25	0.99	0.04	11,14,26,26	0
1	OMG	A	4	24/25	0.99	0.04	11,14,24,24	0
1	OMC	A	5	21/22	0.99	0.04	11,15,20,20	0

6.3 Carbohydrates [i](#)

There are no monosaccharides in this entry.

6.4 Ligands [i](#)

In the following table, the Atoms column lists the number of modelled atoms in the group and the number defined in the chemical component dictionary. The B-factors column lists the minimum, median, 95th percentile and maximum values of B factors of atoms in the group. The column labelled 'Q< 0.9' lists the number of atoms with occupancy less than 0.9.

Mol	Type	Chain	Res	Atoms	RSCC	RSR	B-factors(Å ²)	Q<0.9
2	MG	A	104	1/1	0.73	0.18	55,55,55,55	1
3	MPD	B	202	8/8	0.85	0.37	34,37,40,44	8
3	MPD	A	201	8/8	0.87	0.27	24,33,36,37	8
2	MG	B	102	1/1	0.91	0.10	23,23,23,23	1
2	MG	B	105	1/1	0.96	0.09	23,23,23,23	1
2	MG	A	101	1/1	0.97	0.07	20,20,20,20	1
2	MG	A	103	1/1	0.99	0.08	12,12,12,12	1

6.5 Other polymers [i](#)

There are no such residues in this entry.