



wwPDB X-ray Structure Validation Summary Report ⓘ

Mar 23, 2024 – 10:06 PM EDT

PDB ID : 1FZB
Title : CRYSTAL STRUCTURE OF CROSSLINKED FRAGMENT D
Authors : Spraggon, G.; Everse, S.J.; Doolittle, R.F.
Deposited on : 1997-08-05
Resolution : 2.90 Å(reported)

This is a wwPDB X-ray Structure Validation Summary Report for a publicly released PDB entry.

We welcome your comments at validation@mail.wwpdb.org

A user guide is available at

<https://www.wwpdb.org/validation/2017/XrayValidationReportHelp>

with specific help available everywhere you see the ⓘ symbol.

The types of validation reports are described at

<http://www.wwpdb.org/validation/2017/FAQs#types>.

The following versions of software and data (see [references ⓘ](#)) were used in the production of this report:

MolProbity : 4.02b-467
Mogul : 1.8.5 (274361), CSD as541be (2020)
Xtrriage (Phenix) : **NOT EXECUTED**
EDS : **NOT EXECUTED**
Percentile statistics : 20191225.v01 (using entries in the PDB archive December 25th 2019)
Ideal geometry (proteins) : Engh & Huber (2001)
Ideal geometry (DNA, RNA) : Parkinson et al. (1996)
Validation Pipeline (wwPDB-VP) : 2.36.1

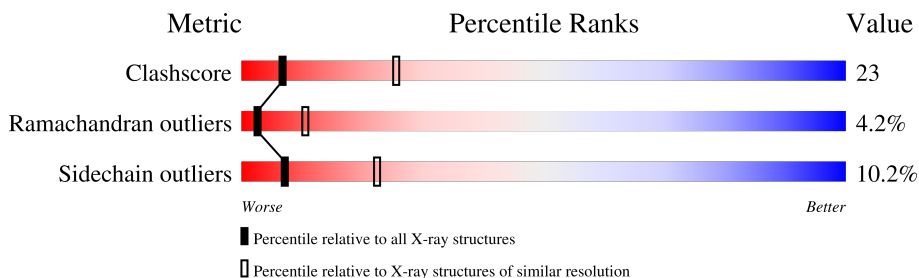
1 Overall quality at a glance

The following experimental techniques were used to determine the structure:

X-RAY DIFFRACTION

The reported resolution of this entry is 2.90 Å.

Percentile scores (ranging between 0-100) for global validation metrics of the entry are shown in the following graphic. The table shows the number of entries on which the scores are based.



Metric	Whole archive (#Entries)	Similar resolution (#Entries, resolution range(Å))
Clashscore	141614	2172 (2.90-2.90)
Ramachandran outliers	138981	2115 (2.90-2.90)
Sidechain outliers	138945	2117 (2.90-2.90)

The table below summarises the geometric issues observed across the polymeric chains and their fit to the electron density. The red, orange, yellow and green segments of the lower bar indicate the fraction of residues that contain outliers for ≥ 3 , 2, 1 and 0 types of geometric quality criteria respectively. A grey segment represents the fraction of residues that are not modelled. The numeric value for each fraction is indicated below the corresponding segment, with a dot representing fractions $\leq 5\%$

Note EDS was not executed.

Mol	Chain	Length	Quality of chain
1	A	87	
1	D	87	
2	B	328	
2	E	328	
3	C	319	
3	F	319	
4	G	4	
4	H	4	

2 Entry composition [i](#)

There are 6 unique types of molecules in this entry. The entry contains 11417 atoms, of which 0 are hydrogens and 0 are deuteriums.

In the tables below, the ZeroOcc column contains the number of atoms modelled with zero occupancy, the AltConf column contains the number of residues with at least one atom in alternate conformation and the Trace column contains the number of residues modelled with at most 2 atoms.

- Molecule 1 is a protein called FIBRINOGEN.

Mol	Chain	Residues	Atoms					ZeroOcc	AltConf	Trace
			Total	C	N	O	S			
1	A	81	Total 669	C 413	N 128	O 125	S 3	0	0	0
1	D	81	Total 669	C 413	N 128	O 125	S 3	0	0	0

- Molecule 2 is a protein called FIBRINOGEN.

Mol	Chain	Residues	Atoms					ZeroOcc	AltConf	Trace
			Total	C	N	O	S			
2	B	312	Total 2508	C 1566	N 442	O 478	S 22	0	0	0
2	E	312	Total 2508	C 1566	N 442	O 478	S 22	0	0	0

- Molecule 3 is a protein called FIBRINOGEN.

Mol	Chain	Residues	Atoms					ZeroOcc	AltConf	Trace
			Total	C	N	O	S			
3	C	309	Total 2480	C 1574	N 415	O 478	S 13	0	0	0
3	F	311	Total 2493	C 1581	N 418	O 481	S 13	0	0	0

There are 2 discrepancies between the modelled and reference sequences:

Chain	Residue	Modelled	Actual	Comment	Reference
C	88	LYS	ILE	conflict	UNP P02679
F	88	LYS	ILE	conflict	UNP P02679

- Molecule 4 is a protein called PEPTIDE LIGAND GPRG.

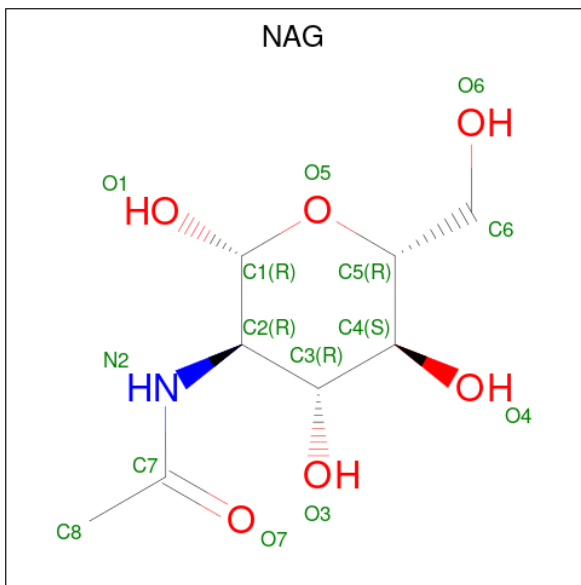
Mol	Chain	Residues	Atoms				ZeroOcc	AltConf	Trace
			Total	C	N	O			
4	G	4	Total 30	C 18	N 7	O 5	0	0	0

Continued on next page...

Continued from previous page...

Mol	Chain	Residues	Atoms				ZeroOcc	AltConf	Trace
			Total	C	N	O			
4	H	4	30	18	7	5	0	0	0

- Molecule 5 is 2-acetamido-2-deoxy-beta-D-glucopyranose (three-letter code: NAG) (formula: $C_8H_{15}NO_6$).



Mol	Chain	Residues	Atoms				ZeroOcc	AltConf
			Total	C	N	O		
5	B	1	14	8	1	5	0	0
5	E	1	14	8	1	5	0	0

- Molecule 6 is CALCIUM ION (three-letter code: CA) (formula: Ca).

Mol	Chain	Residues	Atoms		ZeroOcc	AltConf
			Total	Ca		
6	C	1	1	1	0	0
6	F	1	1	1	0	0

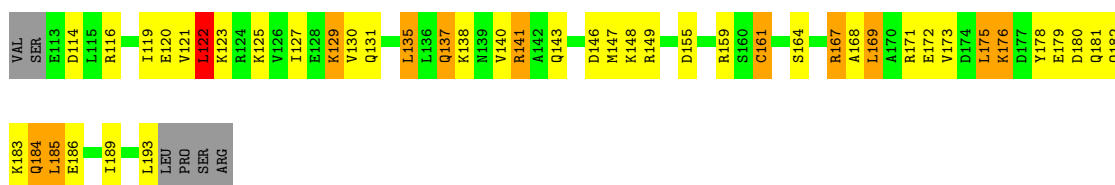
3 Residue-property plots

These plots are drawn for all protein, RNA, DNA and oligosaccharide chains in the entry. The first graphic for a chain summarises the proportions of the various outlier classes displayed in the second graphic. The second graphic shows the sequence view annotated by issues in geometry. Residues are color-coded according to the number of geometric quality criteria for which they contain at least one outlier: green = 0, yellow = 1, orange = 2 and red = 3 or more. Stretches of 2 or more consecutive residues without any outlier are shown as a green connector. Residues present in the sample, but not in the model, are shown in grey.

Note EDS was not executed.

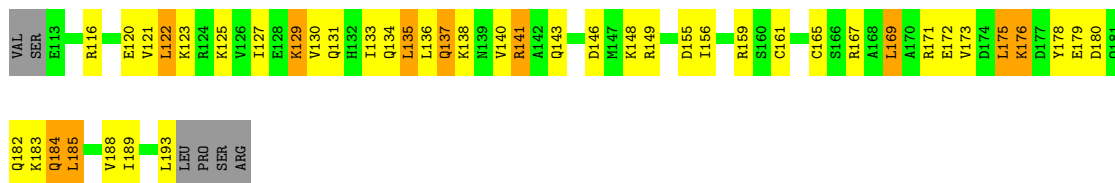
- Molecule 1: FIBRINOGEN

Chain A: 



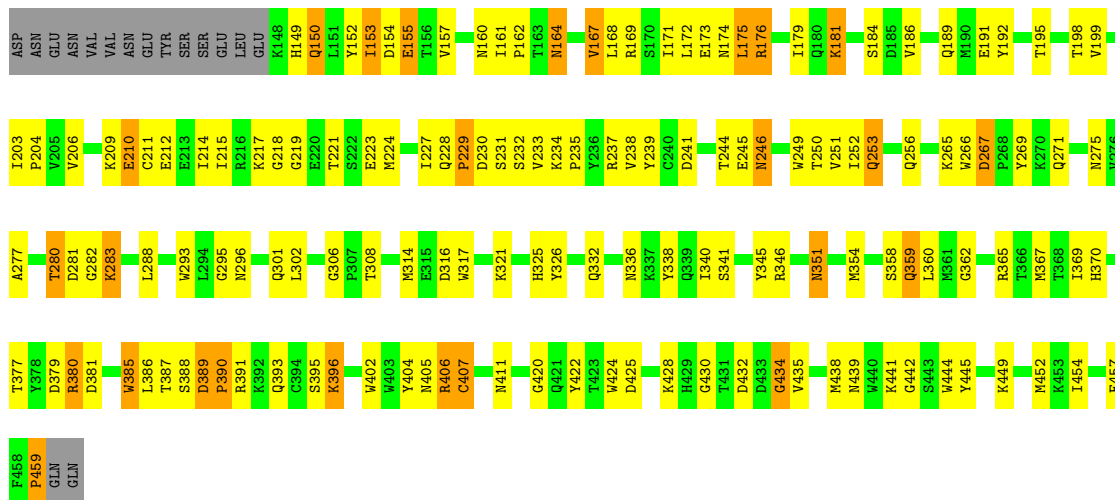
- Molecule 1: FIBRINOGEN

Chain D: 



- Molecule 2: FIBRINOGEN


Chain B: 



Chain G:  50% 25% 25%



● Molecule 4: PEPTIDE LIGAND GPRG

Chain H:  25% 25% 50%



4 Data and refinement statistics

Xtrriage (Phenix) and EDS were not executed - this section is therefore incomplete.

Property	Value	Source
Space group	P 1 21 1	Depositor
Cell constants a, b, c, α , β , γ	93.82Å 95.50Å 113.76Å 90.00° 96.08° 90.00°	Depositor
Resolution (Å)	30.00 – 2.90	Depositor
% Data completeness (in resolution range)	88.8 (30.00-2.90)	Depositor
R_{merge}	0.19	Depositor
R_{sym}	(Not available)	Depositor
Refinement program	X-PLOR	Depositor
R, R_{free}	0.241 , 0.318	Depositor
Estimated twinning fraction	No twinning to report.	Xtrriage
Total number of atoms	11417	wwPDB-VP
Average B, all atoms (Å ²)	48.0	wwPDB-VP

5 Model quality [i](#)

5.1 Standard geometry [i](#)

Bond lengths and bond angles in the following residue types are not validated in this section: CA, NAG

The Z score for a bond length (or angle) is the number of standard deviations the observed value is removed from the expected value. A bond length (or angle) with $|Z| > 5$ is considered an outlier worth inspection. RMSZ is the root-mean-square of all Z scores of the bond lengths (or angles).

Mol	Chain	Bond lengths		Bond angles	
		RMSZ	# Z >5	RMSZ	# Z >5
1	A	0.63	1/670 (0.1%)	0.70	1/892 (0.1%)
1	D	0.79	1/670 (0.1%)	0.73	1/892 (0.1%)
2	B	0.63	2/2572 (0.1%)	0.80	4/3475 (0.1%)
2	E	0.67	2/2572 (0.1%)	0.81	3/3475 (0.1%)
3	C	0.65	3/2546 (0.1%)	0.80	1/3440 (0.0%)
3	F	0.59	3/2559 (0.1%)	0.73	1/3457 (0.0%)
4	G	0.49	0/31	0.69	0/40
4	H	0.82	0/31	0.89	0/40
All	All	0.65	12/11651 (0.1%)	0.78	11/15711 (0.1%)

Chiral center outliers are detected by calculating the chiral volume of a chiral center and verifying if the center is modelled as a planar moiety or with the opposite hand. A planarity outlier is detected by checking planarity of atoms in a peptide group, atoms in a mainchain group or atoms of a sidechain that are expected to be planar.

Mol	Chain	#Chirality outliers	#Planarity outliers
2	E	0	1

The worst 5 of 12 bond length outliers are listed below:

Mol	Chain	Res	Type	Atoms	Z	Observed(Å)	Ideal(Å)
2	E	459	PRO	C-O	17.70	1.58	1.23
1	D	193	LEU	C-O	16.14	1.54	1.23
2	B	459	PRO	C-O	15.17	1.53	1.23
3	C	396	GLU	C-O	-13.74	0.97	1.23
1	A	193	LEU	C-O	11.37	1.45	1.23

The worst 5 of 11 bond angle outliers are listed below:

Mol	Chain	Res	Type	Atoms	Z	Observed(°)	Ideal(°)
3	C	396	GLU	CA-C-O	-20.43	77.20	120.10
2	E	459	PRO	CA-C-O	-11.70	92.13	120.20
2	B	459	PRO	CA-C-O	-9.82	96.64	120.20
1	D	193	LEU	CA-C-O	-8.89	101.43	120.10
3	F	398	GLN	N-CA-C	8.57	134.13	111.00

There are no chirality outliers.

All (1) planarity outliers are listed below:

Mol	Chain	Res	Type	Group
2	E	292	TYR	Sidechain

5.2 Too-close contacts [i](#)

In the following table, the Non-H and H(model) columns list the number of non-hydrogen atoms and hydrogen atoms in the chain respectively. The H(added) column lists the number of hydrogen atoms added and optimized by MolProbity. The Clashes column lists the number of clashes within the asymmetric unit, whereas Symm-Clashes lists symmetry-related clashes.

Mol	Chain	Non-H	H(model)	H(added)	Clashes	Symm-Clashes
1	A	669	0	712	43	0
1	D	669	0	712	53	0
2	B	2508	0	2371	135	0
2	E	2508	0	2371	132	0
3	C	2480	0	2333	120	0
3	F	2493	0	2344	95	0
4	G	30	0	32	0	0
4	H	30	0	32	5	0
5	B	14	0	13	1	0
5	E	14	0	13	6	0
6	C	1	0	0	0	0
6	F	1	0	0	0	0
All	All	11417	0	10933	520	0

The all-atom clashscore is defined as the number of clashes found per 1000 atoms (including hydrogen atoms). The all-atom clashscore for this structure is 23.

The worst 5 of 520 close contacts within the same asymmetric unit are listed below, sorted by their clash magnitude.

Atom-1	Atom-2	Interatomic distance (Å)	Clash overlap (Å)
3:C:396:GLU:C	3:C:396:GLU:CA	1.77	1.53

Continued on next page...

Continued from previous page...

Atom-1	Atom-2	Interatomic distance (Å)	Clash overlap (Å)
3:C:396:GLU:CA	3:C:396:GLU:O	1.82	1.22
2:E:389:ASP:HB3	2:E:390:PRO:HD2	1.38	1.05
2:B:389:ASP:HB3	2:B:390:PRO:HD2	1.37	1.02
3:C:209:ILE:H	3:C:209:ILE:HD12	1.25	0.98

There are no symmetry-related clashes.

5.3 Torsion angles [i](#)

5.3.1 Protein backbone [i](#)

In the following table, the Percentiles column shows the percent Ramachandran outliers of the chain as a percentile score with respect to all X-ray entries followed by that with respect to entries of similar resolution.

The Analysed column shows the number of residues for which the backbone conformation was analysed, and the total number of residues.

Mol	Chain	Analysed	Favoured	Allowed	Outliers	Percentiles	
1	A	79/87 (91%)	72 (91%)	5 (6%)	2 (2%)	5	21
1	D	79/87 (91%)	72 (91%)	5 (6%)	2 (2%)	5	21
2	B	310/328 (94%)	263 (85%)	33 (11%)	14 (4%)	2	9
2	E	310/328 (94%)	258 (83%)	39 (13%)	13 (4%)	3	10
3	C	307/319 (96%)	264 (86%)	33 (11%)	10 (3%)	4	15
3	F	309/319 (97%)	257 (83%)	38 (12%)	14 (4%)	2	9
4	G	2/4 (50%)	0	0	2 (100%)	0	0
4	H	2/4 (50%)	0	0	2 (100%)	0	0
All	All	1398/1476 (95%)	1186 (85%)	153 (11%)	59 (4%)	3	10

5 of 59 Ramachandran outliers are listed below:

Mol	Chain	Res	Type
2	B	149	HIS
2	B	280	THR
2	B	391	ARG
2	B	407	CYS
3	C	89	MET

5.3.2 Protein sidechains [i](#)

In the following table, the Percentiles column shows the percent sidechain outliers of the chain as a percentile score with respect to all X-ray entries followed by that with respect to entries of similar resolution.

The Analysed column shows the number of residues for which the sidechain conformation was analysed, and the total number of residues.

Mol	Chain	Analysed	Rotameric	Outliers	Percentiles	
1	A	76/82 (93%)	59 (78%)	17 (22%)	1	2
1	D	76/82 (93%)	62 (82%)	14 (18%)	1	5
2	B	270/286 (94%)	243 (90%)	27 (10%)	7	23
2	E	270/286 (94%)	246 (91%)	24 (9%)	9	29
3	C	261/267 (98%)	241 (92%)	20 (8%)	13	35
3	F	262/267 (98%)	241 (92%)	21 (8%)	12	33
4	G	3/3 (100%)	2 (67%)	1 (33%)	0	0
4	H	3/3 (100%)	3 (100%)	0	100	100
All	All	1221/1276 (96%)	1097 (90%)	124 (10%)	7	22

5 of 124 residues with a non-rotameric sidechain are listed below:

Mol	Chain	Res	Type
3	C	325	ASN
3	F	192	THR
1	D	169	LEU
3	F	176	GLN
3	F	382	THR

Sometimes sidechains can be flipped to improve hydrogen bonding and reduce clashes. 5 of 64 such sidechains are listed below:

Mol	Chain	Res	Type
3	F	239	GLN
3	F	311	GLN
3	C	230	ASN
3	C	189	ASN
3	F	325	ASN

5.3.3 RNA [i](#)

There are no RNA molecules in this entry.

5.4 Non-standard residues in protein, DNA, RNA chains [i](#)

There are no non-standard protein/DNA/RNA residues in this entry.

5.5 Carbohydrates [i](#)

There are no monosaccharides in this entry.

5.6 Ligand geometry [i](#)

Of 4 ligands modelled in this entry, 2 are monoatomic - leaving 2 for Mogul analysis.

In the following table, the Counts columns list the number of bonds (or angles) for which Mogul statistics could be retrieved, the number of bonds (or angles) that are observed in the model and the number of bonds (or angles) that are defined in the Chemical Component Dictionary. The Link column lists molecule types, if any, to which the group is linked. The Z score for a bond length (or angle) is the number of standard deviations the observed value is removed from the expected value. A bond length (or angle) with $|Z| > 2$ is considered an outlier worth inspection. RMSZ is the root-mean-square of all Z scores of the bond lengths (or angles).

Mol	Type	Chain	Res	Link	Bond lengths			Bond angles		
					Counts	RMSZ	# Z > 2	Counts	RMSZ	# Z > 2
5	NAG	E	1	-	14,14,15	0.49	0	17,19,21	0.66	0
5	NAG	B	1	-	14,14,15	0.45	0	17,19,21	0.65	0

In the following table, the Chirals column lists the number of chiral outliers, the number of chiral centers analysed, the number of these observed in the model and the number defined in the Chemical Component Dictionary. Similar counts are reported in the Torsion and Rings columns. '-' means no outliers of that kind were identified.

Mol	Type	Chain	Res	Link	Chirals	Torsions	Rings
5	NAG	E	1	-	-	2/6/23/26	0/1/1/1
5	NAG	B	1	-	-	3/6/23/26	0/1/1/1

There are no bond length outliers.

There are no bond angle outliers.

There are no chirality outliers.

All (5) torsion outliers are listed below:

Mol	Chain	Res	Type	Atoms
5	E	1	NAG	C3-C2-N2-C7
5	B	1	NAG	C4-C5-C6-O6

Continued on next page...

Continued from previous page...

Mol	Chain	Res	Type	Atoms
5	B	1	NAG	O5-C5-C6-O6
5	E	1	NAG	O5-C5-C6-O6
5	B	1	NAG	C3-C2-N2-C7

There are no ring outliers.

2 monomers are involved in 7 short contacts:

Mol	Chain	Res	Type	Clashes	Symm-Clashes
5	E	1	NAG	6	0
5	B	1	NAG	1	0

5.7 Other polymers [i](#)

There are no such residues in this entry.

5.8 Polymer linkage issues [i](#)

The following chains have linkage breaks:

Mol	Chain	Number of breaks
3	F	1
2	E	1
2	B	1

All chain breaks are listed below:

Model	Chain	Residue-1	Atom-1	Residue-2	Atom-2	Distance (Å)
1	F	397:GLY	C	398:GLN	N	1.19
1	E	175:LEU	C	176:ARG	N	1.13
1	B	175:LEU	C	176:ARG	N	1.11

6 Fit of model and data

6.1 Protein, DNA and RNA chains

EDS was not executed - this section is therefore empty.

6.2 Non-standard residues in protein, DNA, RNA chains

EDS was not executed - this section is therefore empty.

6.3 Carbohydrates

EDS was not executed - this section is therefore empty.

6.4 Ligands

EDS was not executed - this section is therefore empty.

6.5 Other polymers

EDS was not executed - this section is therefore empty.