



# Full wwPDB X-ray Structure Validation Report ⓘ

Jul 12, 2021 – 06:09 PM EDT

PDB ID : 1FGX  
Title : CRYSTAL STRUCTURE OF THE BOVINE BETA 1,4 GALACTOSYLTRANSFERASE (B4GALT1) CATALYTIC DOMAIN COMPLEXED WITH UMP  
Authors : Gastinel, L.N.; Cambillau, C.; Bourne, Y.  
Deposited on : 2000-07-29  
Resolution : 2.40 Å(reported)

This is a Full wwPDB X-ray Structure Validation Report for a publicly released PDB entry.

We welcome your comments at [validation@mail.wwpdb.org](mailto:validation@mail.wwpdb.org)

A user guide is available at

<https://www.wwpdb.org/validation/2017/XrayValidationReportHelp>

with specific help available everywhere you see the ⓘ symbol.

---

The following versions of software and data (see [references ⓘ](#)) were used in the production of this report:

MolProbity : 4.02b-467  
Mogul : 1.8.5 (274361), CSD as541be (2020)  
Xtriage (Phenix) : 1.13  
EDS : 2.22  
buster-report : 1.1.7 (2018)  
Percentile statistics : 20191225.v01 (using entries in the PDB archive December 25th 2019)  
Refmac : 5.8.0158  
CCP4 : 7.0.044 (Gargrove)  
Ideal geometry (proteins) : Engh & Huber (2001)  
Ideal geometry (DNA, RNA) : Parkinson et al. (1996)  
Validation Pipeline (wwPDB-VP) : 2.22

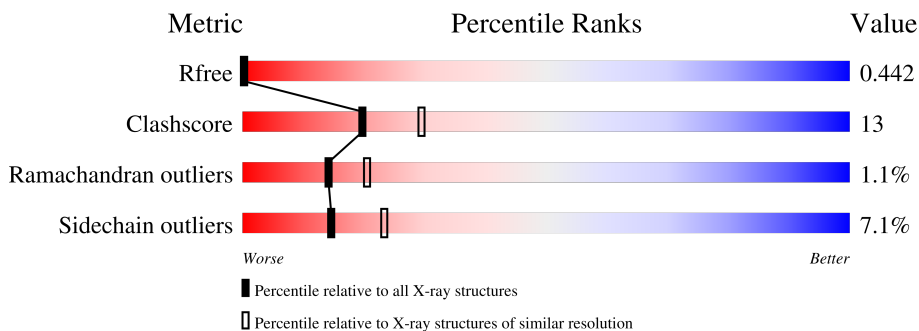
# 1 Overall quality at a glance

The following experimental techniques were used to determine the structure:

*X-RAY DIFFRACTION*

The reported resolution of this entry is 2.40 Å.

Percentile scores (ranging between 0-100) for global validation metrics of the entry are shown in the following graphic. The table shows the number of entries on which the scores are based.



Metric	Whole archive (#Entries)	Similar resolution (#Entries, resolution range(Å))
$R_{free}$	130704	3907 (2.40-2.40)
Clashscore	141614	4398 (2.40-2.40)
Ramachandran outliers	138981	4318 (2.40-2.40)
Sidechain outliers	138945	4319 (2.40-2.40)

The table below summarises the geometric issues observed across the polymeric chains and their fit to the electron density. The red, orange, yellow and green segments of the lower bar indicate the fraction of residues that contain outliers for  $\geq 3$ , 2, 1 and 0 types of geometric quality criteria respectively. A grey segment represents the fraction of residues that are not modelled. The numeric value for each fraction is indicated below the corresponding segment, with a dot representing fractions  $\leq 5\%$

Mol	Chain	Length	Quality of chain
1	A	288	 65% 26% • 6%
1	B	288	 66% 25% • 5%

## 2 Entry composition [i](#)

There are 3 unique types of molecules in this entry. The entry contains 4609 atoms, of which 0 are hydrogens and 0 are deuteriums.

In the tables below, the ZeroOcc column contains the number of atoms modelled with zero occupancy, the AltConf column contains the number of residues with at least one atom in alternate conformation and the Trace column contains the number of residues modelled with at most 2 atoms.

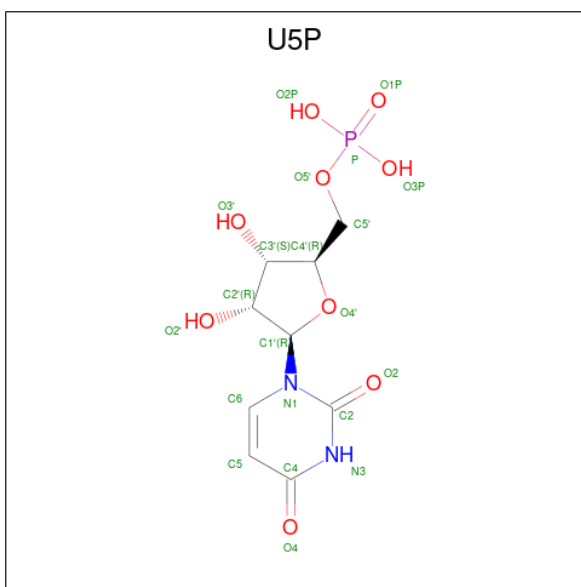
- Molecule 1 is a protein called BETA 1,4 GALACTOSYLTRANSFERASE.

Mol	Chain	Residues	Atoms					ZeroOcc	AltConf	Trace
			Total	C	N	O	S			
1	A	272	Total 2219	C 1425	N 382	O 398	S 14	0	0	0
1	B	273	Total 2224	C 1428	N 383	O 399	S 14	0	0	0

There are 2 discrepancies between the modelled and reference sequences:

Chain	Residue	Modelled	Actual	Comment	Reference
A	187	PRO	LEU	SEE REMARK 999	UNP P08037
B	187	PRO	LEU	SEE REMARK 999	UNP P08037

- Molecule 2 is URIDINE-5'-MONOPHOSPHATE (three-letter code: U5P) (formula:  $C_9H_{13}N_2O_9P$ ).



Mol	Chain	Residues	Atoms					ZeroOcc	AltConf
			Total	C	N	O	P		
2	B	1	Total 21	C 9	N 2	O 9	P 1	0	0

- Molecule 3 is water.

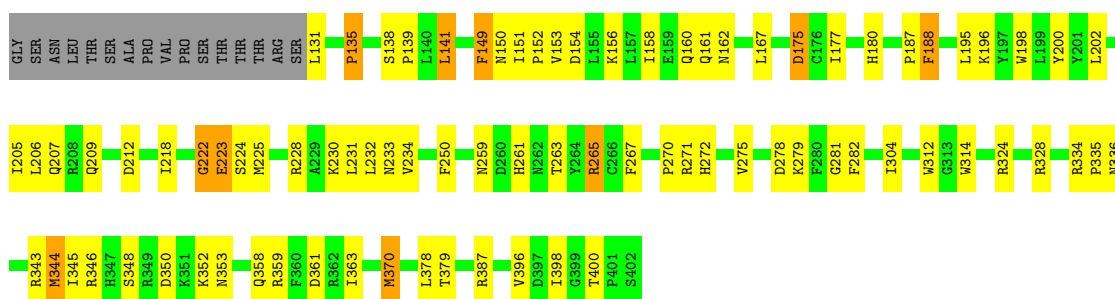
Mol	Chain	Residues	Atoms		ZeroOcc	AltConf
3	A	73	Total 73	O 73	0	0
3	B	72	Total 72	O 72	0	0

### 3 Residue-property plots

These plots are drawn for all protein, RNA, DNA and oligosaccharide chains in the entry. The first graphic for a chain summarises the proportions of the various outlier classes displayed in the second graphic. The second graphic shows the sequence view annotated by issues in geometry. Residues are color-coded according to the number of geometric quality criteria for which they contain at least one outlier: green = 0, yellow = 1, orange = 2 and red = 3 or more. Stretches of 2 or more consecutive residues without any outlier are shown as a green connector. Residues present in the sample, but not in the model, are shown in grey.

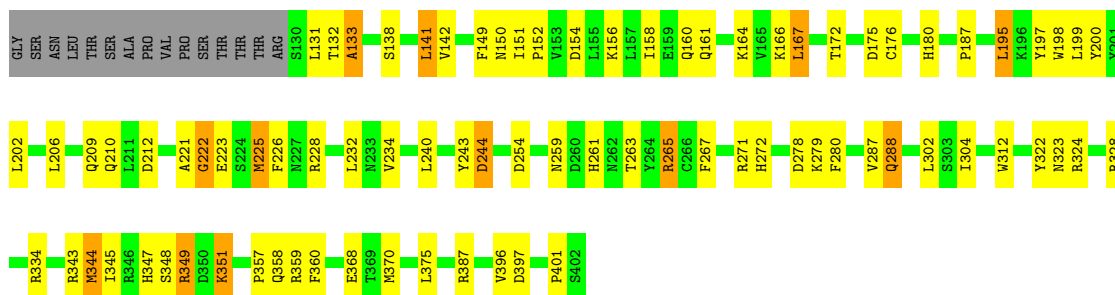
- Molecule 1: BETA 1,4 GALACTOSYLTRANSFERASE

Chain A: 



- Molecule 1: BETA 1,4 GALACTOSYLTRANSFERASE

Chain B: 



## 4 Data and refinement statistics

Property	Value	Source
Space group	C 2 2 21	Depositor
Cell constants a, b, c, $\alpha$ , $\beta$ , $\gamma$	108.50Å 161.00Å 107.40Å 90.00° 90.00° 90.00°	Depositor
Resolution (Å)	29.28 – 2.40 29.88 – 2.40	Depositor EDS
% Data completeness (in resolution range)	96.0 (29.28-2.40) 91.6 (29.88-2.40)	Depositor EDS
$R_{merge}$	0.06	Depositor
$R_{sym}$	(Not available)	Depositor
$\langle I/\sigma(I) \rangle$ <sup>1</sup>	2.33 (at 2.39Å)	Xtrriage
Refinement program	CNS 0.9	Depositor
R, $R_{free}$	0.225 , 0.268 0.401 , 0.442	Depositor DCC
$R_{free}$ test set	1026 reflections (3.01%)	wwPDB-VP
Wilson B-factor (Å <sup>2</sup> )	55.3	Xtrriage
Anisotropy	0.269	Xtrriage
Bulk solvent $k_{sol}$ (e/Å <sup>3</sup> ), $B_{sol}$ (Å <sup>2</sup> )	0.32 , 76.0	EDS
L-test for twinning <sup>2</sup>	$\langle  L  \rangle = 0.48$ , $\langle L^2 \rangle = 0.32$	Xtrriage
Estimated twinning fraction	No twinning to report.	Xtrriage
$F_o, F_c$ correlation	0.81	EDS
Total number of atoms	4609	wwPDB-VP
Average B, all atoms (Å <sup>2</sup> )	60.0	wwPDB-VP

Xtrriage's analysis on translational NCS is as follows: *The largest off-origin peak in the Patterson function is 4.23% of the height of the origin peak. No significant pseudotranslation is detected.*

<sup>1</sup>Intensities estimated from amplitudes.

<sup>2</sup>Theoretical values of  $\langle |L| \rangle$ ,  $\langle L^2 \rangle$  for acentric reflections are 0.5, 0.333 respectively for untwinned datasets, and 0.375, 0.2 for perfectly twinned datasets.

## 5 Model quality [i](#)

### 5.1 Standard geometry [i](#)

Bond lengths and bond angles in the following residue types are not validated in this section: U5P

The Z score for a bond length (or angle) is the number of standard deviations the observed value is removed from the expected value. A bond length (or angle) with  $|Z| > 5$  is considered an outlier worth inspection. RMSZ is the root-mean-square of all Z scores of the bond lengths (or angles).

Mol	Chain	Bond lengths		Bond angles	
		RMSZ	# $ Z  > 5$	RMSZ	# $ Z  > 5$
1	A	0.70	0/2279	0.88	2/3086 (0.1%)
1	B	0.75	0/2284	0.88	2/3093 (0.1%)
All	All	0.72	0/4563	0.88	4/6179 (0.1%)

There are no bond length outliers.

All (4) bond angle outliers are listed below:

Mol	Chain	Res	Type	Atoms	Z	Observed(°)	Ideal(°)
1	A	222	GLY	N-CA-C	9.06	135.76	113.10
1	B	167	LEU	CA-CB-CG	5.39	127.70	115.30
1	A	212	ASP	N-CA-C	-5.14	97.11	111.00
1	B	344	MET	CB-CG-SD	5.12	127.77	112.40

There are no chirality outliers.

There are no planarity outliers.

### 5.2 Too-close contacts [i](#)

In the following table, the Non-H and H(model) columns list the number of non-hydrogen atoms and hydrogen atoms in the chain respectively. The H(added) column lists the number of hydrogen atoms added and optimized by MolProbity. The Clashes column lists the number of clashes within the asymmetric unit, whereas Symm-Clashes lists symmetry-related clashes.

Mol	Chain	Non-H	H(model)	H(added)	Clashes	Symm-Clashes
1	A	2219	0	2187	53	4
1	B	2224	0	2189	61	4
2	B	21	0	11	1	0
3	A	73	0	0	4	1
3	B	72	0	0	6	1

*Continued on next page...*

*Continued from previous page...*

Mol	Chain	Non-H	H(model)	H(added)	Clashes	Symm-Clashes
All	All	4609	0	4387	112	5

The all-atom clashscore is defined as the number of clashes found per 1000 atoms (including hydrogen atoms). The all-atom clashscore for this structure is 13.

All (112) close contacts within the same asymmetric unit are listed below, sorted by their clash magnitude.

Atom-1	Atom-2	Interatomic distance (Å)	Clash overlap (Å)
1:B:279:LYS:HZ2	1:B:344:MET:HB2	1.40	0.86
1:B:279:LYS:NZ	1:B:344:MET:HB2	1.99	0.77
1:A:230:LYS:HD3	1:A:398:ILE:HB	1.66	0.77
1:A:222:GLY:O	1:A:223:GLU:HB2	1.86	0.76
1:A:131:LEU:HD13	1:A:177:ILE:HD11	1.73	0.71
1:A:151:ILE:HG13	1:A:151:ILE:O	1.92	0.69
1:B:158:ILE:HD11	1:B:200:TYR:HB2	1.74	0.68
1:B:280:PHE:CZ	1:B:357:PRO:HD3	2.31	0.66
1:B:154:ASP:OD2	1:B:156:LYS:HB2	1.97	0.64
1:A:154:ASP:OD2	1:A:156:LYS:HB2	1.98	0.63
1:A:344:MET:HG2	1:A:346:ARG:HG2	1.80	0.63
1:B:259:ASN:OD1	1:B:261:HIS:HB2	2.00	0.61
1:A:158:ILE:HD11	1:A:200:TYR:HB2	1.83	0.60
1:B:150:ASN:O	1:B:152:PRO:HD3	2.01	0.60
1:B:225:MET:HE3	1:B:225:MET:HA	1.82	0.59
1:B:312:TRP:CD2	1:B:401:PRO:HG3	2.38	0.59
1:A:202:LEU:O	1:A:206:LEU:HG	2.03	0.59
1:B:234:VAL:HG11	1:B:396:VAL:HG11	1.84	0.58
1:A:232:LEU:HD22	1:A:250:PHE:HD2	1.69	0.58
1:B:132:THR:O	1:B:133:ALA:HB2	2.02	0.58
1:A:205:ILE:O	1:A:209:GLN:HG3	2.04	0.57
1:A:358:GLN:NE2	1:B:358:GLN:HG3	2.19	0.57
1:A:275:VAL:HG22	1:A:334:ARG:HD3	1.85	0.57
1:A:150:ASN:O	1:A:152:PRO:HD3	2.05	0.56
1:A:279:LYS:HD3	1:A:344:MET:SD	2.45	0.56
1:A:234:VAL:HG11	1:A:396:VAL:HG11	1.88	0.56
1:B:167:LEU:CD1	1:B:387:ARG:HB3	2.36	0.56
1:B:349:ARG:CZ	1:B:351:LYS:HB3	2.35	0.55
1:B:131:LEU:HD22	1:B:176:CYS:HA	1.88	0.55
1:B:132:THR:O	1:B:133:ALA:CB	2.54	0.55
1:A:358:GLN:HE21	1:B:358:GLN:HG3	1.73	0.54
1:B:138:SER:HB3	1:B:141:LEU:HD13	1.90	0.54
1:A:259:ASN:OD1	1:A:261:HIS:HB2	2.07	0.53

*Continued on next page...*



*Continued from previous page...*

Atom-1	Atom-2	Interatomic distance (Å)	Clash overlap (Å)
1:A:233:ASN:HB3	1:A:378:LEU:HD22	1.90	0.53
1:B:151:ILE:HD12	1:B:151:ILE:O	2.09	0.52
1:B:226:PHE:HB2	2:B:101:U5P:H1'	1.90	0.52
1:A:151:ILE:O	1:A:151:ILE:CG1	2.57	0.52
1:B:312:TRP:CG	1:B:401:PRO:HG3	2.45	0.52
1:A:278:ASP:OD2	1:A:279:LYS:N	2.43	0.52
1:B:141:LEU:HD23	1:B:261:HIS:CE1	2.45	0.52
1:B:267:PHE:CD1	1:B:271:ARG:HD3	2.45	0.52
1:B:225:MET:HA	1:B:225:MET:CE	2.39	0.51
1:A:187:PRO:HD3	1:A:232:LEU:HD21	1.92	0.51
1:B:272:HIS:HB3	1:B:334:ARG:HG2	1.93	0.51
1:B:221:ALA:O	1:B:222:GLY:O	2.28	0.51
1:A:281:GLY:O	1:A:282:PHE:HB2	2.10	0.51
1:B:167:LEU:HD11	1:B:387:ARG:HB3	1.92	0.51
1:B:197:TYR:CE1	1:B:347:HIS:HE1	2.29	0.51
1:A:228:ARG:HB2	3:A:509:HOH:O	2.10	0.50
1:B:328:ARG:NH2	3:B:522:HOH:O	2.06	0.50
1:B:278:ASP:OD2	1:B:279:LYS:N	2.45	0.50
1:B:280:PHE:CE1	1:B:357:PRO:HD3	2.47	0.50
1:B:244:ASP:O	1:B:244:ASP:CG	2.50	0.50
1:A:180:HIS:CE1	1:A:265:ARG:HD2	2.47	0.50
1:A:379:THR:N	3:A:549:HOH:O	2.13	0.49
1:A:162:ASN:HD22	1:A:207:GLN:HE22	1.58	0.49
1:B:180:HIS:CE1	1:B:265:ARG:HD2	2.48	0.48
1:B:288:GLN:HB3	1:B:322:TYR:CZ	2.47	0.48
1:B:304:ILE:HB	1:B:324:ARG:HB3	1.95	0.48
1:A:324:ARG:HG2	1:A:370:MET:HG3	1.96	0.48
1:B:279:LYS:CE	1:B:344:MET:HB2	2.44	0.48
1:A:271:ARG:NH2	1:A:335:PRO:HB3	2.29	0.48
1:A:225:MET:SD	1:A:312:TRP:HB3	2.55	0.47
1:B:323:ASN:ND2	3:B:582:HOH:O	2.35	0.47
1:A:138:SER:HB3	1:A:141:LEU:HD13	1.96	0.47
1:A:222:GLY:O	1:A:223:GLU:CB	2.56	0.47
1:A:281:GLY:N	1:A:353:ASN:OD1	2.47	0.47
1:A:275:VAL:CG2	1:A:334:ARG:HD3	2.45	0.47
1:B:164:LYS:NZ	3:B:568:HOH:O	2.48	0.47
1:B:212:ASP:OD2	1:B:243:TYR:OH	2.22	0.47
1:B:167:LEU:HD11	1:B:387:ARG:CB	2.45	0.46
1:B:265:ARG:NH1	3:B:641:HOH:O	2.48	0.46
1:A:188:PHE:C	1:A:188:PHE:CD1	2.88	0.46
1:B:288:GLN:HG3	1:B:359:ARG:NH2	2.31	0.46

*Continued on next page...*

Continued from previous page...

Atom-1	Atom-2	Interatomic distance (Å)	Clash overlap (Å)
1:A:175:ASP:OD1	1:A:175:ASP:N	2.48	0.46
1:B:279:LYS:NZ	1:B:344:MET:CB	2.77	0.45
1:B:198:TRP:CZ2	1:B:202:LEU:HG	2.52	0.45
1:A:167:LEU:CD1	1:A:387:ARG:HB3	2.47	0.44
1:A:328:ARG:HE	1:A:328:ARG:HB3	1.55	0.44
1:A:218:ILE:HG22	1:A:231:LEU:HD22	2.00	0.44
1:B:288:GLN:OE1	1:B:288:GLN:N	2.52	0.43
1:A:153:VAL:HG23	1:A:196:LYS:HB3	2.00	0.43
1:B:187:PRO:HD3	1:B:232:LEU:HD21	2.00	0.43
1:B:360:PHE:HA	3:B:585:HOH:O	2.19	0.43
1:A:149:PHE:CE2	1:A:345:ILE:HG12	2.54	0.43
1:B:209:GLN:O	1:B:210:GLN:HB2	2.19	0.43
1:A:267:PHE:CD1	1:A:271:ARG:HD3	2.54	0.42
1:B:240:LEU:HD23	1:B:240:LEU:HA	1.86	0.42
1:B:195:LEU:HD22	1:B:199:LEU:HG	2.01	0.42
1:A:135:PRO:HG3	1:A:139:PRO:HD3	2.02	0.42
1:B:370:MET:HE3	1:B:370:MET:HB3	1.80	0.42
1:B:397:ASP:OD2	1:B:397:ASP:C	2.58	0.42
1:A:167:LEU:HD11	1:A:387:ARG:HB3	2.02	0.42
1:B:142:VAL:O	1:B:142:VAL:HG12	2.19	0.42
1:B:287:VAL:HG23	3:B:559:HOH:O	2.19	0.42
1:A:363:ILE:HG23	3:A:551:HOH:O	2.19	0.42
1:A:272:HIS:HB3	1:A:334:ARG:HG2	2.01	0.42
1:A:304:ILE:HB	1:A:324:ARG:HB3	2.02	0.42
1:B:375:LEU:HD12	1:B:375:LEU:HA	1.80	0.42
1:B:279:LYS:HD2	1:B:344:MET:HB2	2.01	0.42
1:A:344:MET:O	1:A:346:ARG:HG3	2.20	0.41
1:A:378:LEU:HA	3:A:549:HOH:O	2.19	0.41
1:B:347:HIS:O	1:B:349:ARG:N	2.52	0.41
1:A:361:ASP:OD1	1:A:363:ILE:HG22	2.20	0.41
1:B:254:ASP:HA	1:B:345:ILE:HD12	2.02	0.41
1:B:172:THR:HG23	1:B:212:ASP:CG	2.41	0.41
1:B:202:LEU:O	1:B:206:LEU:HG	2.21	0.41
1:A:198:TRP:CZ2	1:A:202:LEU:HG	2.56	0.41
1:A:167:LEU:C	1:A:167:LEU:HD13	2.41	0.41
1:A:131:LEU:HD23	1:A:131:LEU:HA	1.93	0.40
1:B:228:ARG:O	1:B:232:LEU:HG	2.21	0.40
1:A:167:LEU:HD11	1:A:387:ARG:CB	2.51	0.40

All (5) symmetry-related close contacts are listed below. The label for Atom-2 includes the symmetry operator and encoded unit-cell translations to be applied.

Atom-1	Atom-2	Interatomic distance (Å)	Clash overlap (Å)
1:A:200:TYR:OH	1:B:160:GLN:OE1[6_554]	1.36	0.84
1:A:161:GLN:OE1	1:B:161:GLN:OE1[6_554]	1.63	0.57
1:A:161:GLN:NE2	1:B:161:GLN:OE1[6_554]	1.66	0.54
1:A:161:GLN:CD	1:B:161:GLN:OE1[6_554]	1.82	0.38
3:A:553:HOH:O	3:B:522:HOH:O[3_555]	2.10	0.10

### 5.3 Torsion angles [i](#)

#### 5.3.1 Protein backbone [i](#)

In the following table, the Percentiles column shows the percent Ramachandran outliers of the chain as a percentile score with respect to all X-ray entries followed by that with respect to entries of similar resolution.

The Analysed column shows the number of residues for which the backbone conformation was analysed, and the total number of residues.

Mol	Chain	Analysed	Favoured	Allowed	Outliers	Percentiles	
1	A	270/288 (94%)	252 (93%)	15 (6%)	3 (1%)	14	20
1	B	271/288 (94%)	250 (92%)	18 (7%)	3 (1%)	14	20
All	All	541/576 (94%)	502 (93%)	33 (6%)	6 (1%)	14	20

All (6) Ramachandran outliers are listed below:

Mol	Chain	Res	Type
1	A	352	LYS
1	B	133	ALA
1	B	222	GLY
1	B	348	SER
1	A	135	PRO
1	A	348	SER

#### 5.3.2 Protein sidechains [i](#)

In the following table, the Percentiles column shows the percent sidechain outliers of the chain as a percentile score with respect to all X-ray entries followed by that with respect to entries of similar resolution.

The Analysed column shows the number of residues for which the sidechain conformation was analysed, and the total number of residues.

Mol	Chain	Analysed	Rotameric	Outliers	Percentiles	
1	A	245/259 (95%)	226 (92%)	19 (8%)	12	19
1	B	245/259 (95%)	229 (94%)	16 (6%)	17	27
All	All	490/518 (95%)	455 (93%)	35 (7%)	14	23

All (35) residues with a non-rotameric sidechain are listed below:

Mol	Chain	Res	Type
1	A	141	LEU
1	A	149	PHE
1	A	160	GLN
1	A	175	ASP
1	A	188	PHE
1	A	195	LEU
1	A	223	GLU
1	A	224	SER
1	A	263	THR
1	A	265	ARG
1	A	270	PRO
1	A	314	TRP
1	A	336	ASN
1	A	343	ARG
1	A	344	MET
1	A	350	ASP
1	A	359	ARG
1	A	370	MET
1	A	400	THR
1	B	141	LEU
1	B	149	PHE
1	B	166	LYS
1	B	175	ASP
1	B	195	LEU
1	B	223	GLU
1	B	225	MET
1	B	244	ASP
1	B	263	THR
1	B	265	ARG
1	B	288	GLN
1	B	302	LEU
1	B	343	ARG
1	B	349	ARG
1	B	351	LYS
1	B	368	GLU

Sometimes sidechains can be flipped to improve hydrogen bonding and reduce clashes. All (9) such sidechains are listed below:

Mol	Chain	Res	Type
1	A	161	GLN
1	A	162	ASN
1	A	207	GLN
1	A	210	GLN
1	A	219	ASN
1	A	358	GLN
1	B	161	GLN
1	B	210	GLN
1	B	347	HIS

### 5.3.3 RNA [i](#)

There are no RNA molecules in this entry.

## 5.4 Non-standard residues in protein, DNA, RNA chains [i](#)

There are no non-standard protein/DNA/RNA residues in this entry.

## 5.5 Carbohydrates [i](#)

There are no monosaccharides in this entry.

## 5.6 Ligand geometry [i](#)

1 ligand is modelled in this entry.

In the following table, the Counts columns list the number of bonds (or angles) for which Mogul statistics could be retrieved, the number of bonds (or angles) that are observed in the model and the number of bonds (or angles) that are defined in the Chemical Component Dictionary. The Link column lists molecule types, if any, to which the group is linked. The Z score for a bond length (or angle) is the number of standard deviations the observed value is removed from the expected value. A bond length (or angle) with  $|Z| > 2$  is considered an outlier worth inspection. RMSZ is the root-mean-square of all Z scores of the bond lengths (or angles).

Mol	Type	Chain	Res	Link	Bond lengths			Bond angles		
					Counts	RMSZ	$\# Z  > 2$	Counts	RMSZ	$\# Z  > 2$
2	U5P	B	101	-	18,22,22	2.73	6 (33%)	21,33,33	2.01	6 (28%)

In the following table, the Chirals column lists the number of chiral outliers, the number of chiral

centers analysed, the number of these observed in the model and the number defined in the Chemical Component Dictionary. Similar counts are reported in the Torsion and Rings columns. '-' means no outliers of that kind were identified.

Mol	Type	Chain	Res	Link	Chirals	Torsions	Rings
2	U5P	B	101	-	-	4/8/26/26	0/2/2/2

All (6) bond length outliers are listed below:

Mol	Chain	Res	Type	Atoms	Z	Observed(Å)	Ideal(Å)
2	B	101	U5P	C6-N1	6.56	1.43	1.35
2	B	101	U5P	C4-N3	5.21	1.42	1.33
2	B	101	U5P	O4'-C1'	3.94	1.46	1.41
2	B	101	U5P	P-O3P	3.81	1.69	1.54
2	B	101	U5P	O3'-C3'	2.71	1.49	1.43
2	B	101	U5P	C5'-C4'	2.25	1.58	1.51

All (6) bond angle outliers are listed below:

Mol	Chain	Res	Type	Atoms	Z	Observed(°)	Ideal(°)
2	B	101	U5P	C5-C4-N3	-4.46	113.49	123.31
2	B	101	U5P	O5'-P-O1P	4.16	118.16	106.47
2	B	101	U5P	O5'-C5'-C4'	2.77	118.53	108.99
2	B	101	U5P	O3P-P-O5'	-2.44	100.24	106.73
2	B	101	U5P	C2'-C3'-C4'	-2.30	98.17	102.64
2	B	101	U5P	O3P-P-O1P	2.06	118.76	110.68

There are no chirality outliers.

All (4) torsion outliers are listed below:

Mol	Chain	Res	Type	Atoms
2	B	101	U5P	C2'-C1'-N1-C6
2	B	101	U5P	C4'-C5'-O5'-P
2	B	101	U5P	C3'-C4'-C5'-O5'
2	B	101	U5P	O4'-C4'-C5'-O5'

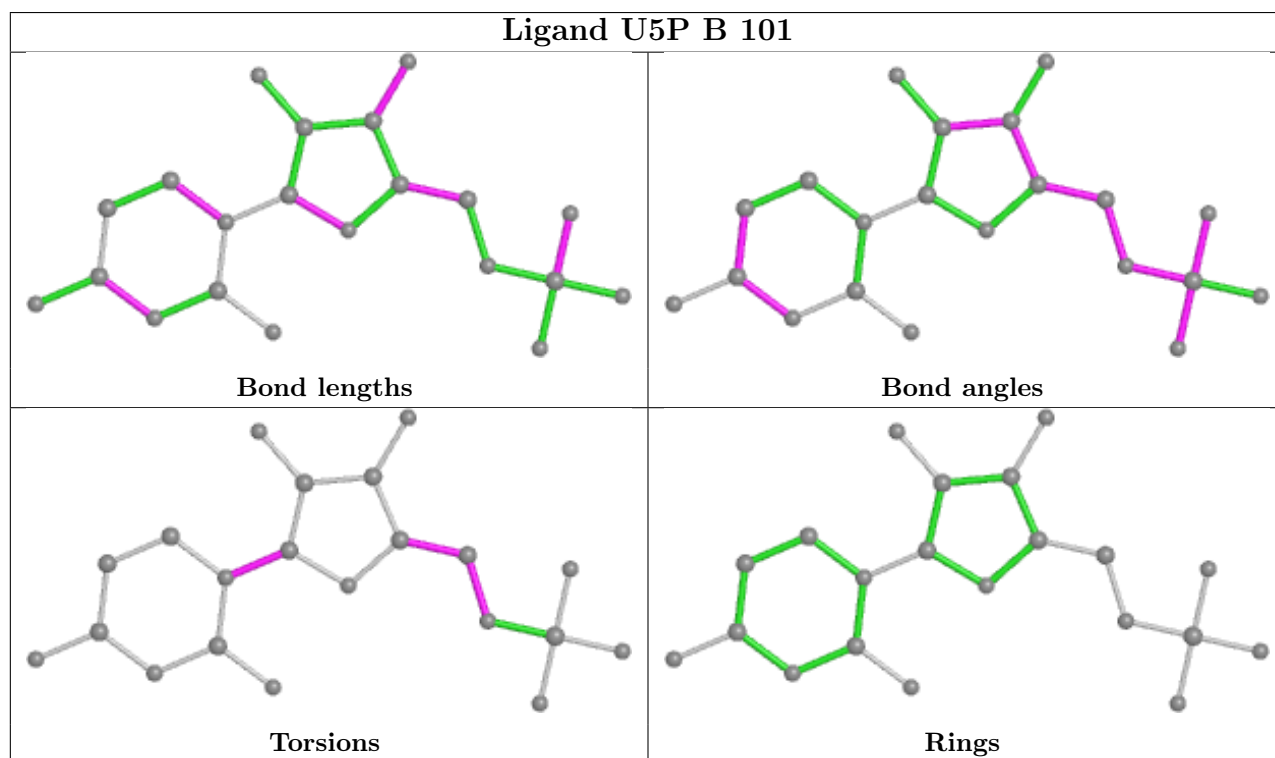
There are no ring outliers.

1 monomer is involved in 1 short contact:

Mol	Chain	Res	Type	Clashes	Symm-Clashes
2	B	101	U5P	1	0

The following is a two-dimensional graphical depiction of Mogul quality analysis of bond lengths,

bond angles, torsion angles, and ring geometry for all instances of the Ligand of Interest. In addition, ligands with molecular weight > 250 and outliers as shown on the validation Tables will also be included. For torsion angles, if less than 5% of the Mogul distribution of torsion angles is within 10 degrees of the torsion angle in question, then that torsion angle is considered an outlier. Any bond that is central to one or more torsion angles identified as an outlier by Mogul will be highlighted in the graph. For rings, the root-mean-square deviation (RMSD) between the ring in question and similar rings identified by Mogul is calculated over all ring torsion angles. If the average RMSD is greater than 60 degrees and the minimal RMSD between the ring in question and any Mogul-identified rings is also greater than 60 degrees, then that ring is considered an outlier. The outliers are highlighted in purple. The color gray indicates Mogul did not find sufficient equivalents in the CSD to analyse the geometry.



## 5.7 Other polymers [i](#)

There are no such residues in this entry.

## 5.8 Polymer linkage issues [i](#)

There are no chain breaks in this entry.

## 6 Fit of model and data

### 6.1 Protein, DNA and RNA chains

Unable to reproduce the depositors R factor - this section is therefore empty.

### 6.2 Non-standard residues in protein, DNA, RNA chains

Unable to reproduce the depositors R factor - this section is therefore empty.

### 6.3 Carbohydrates

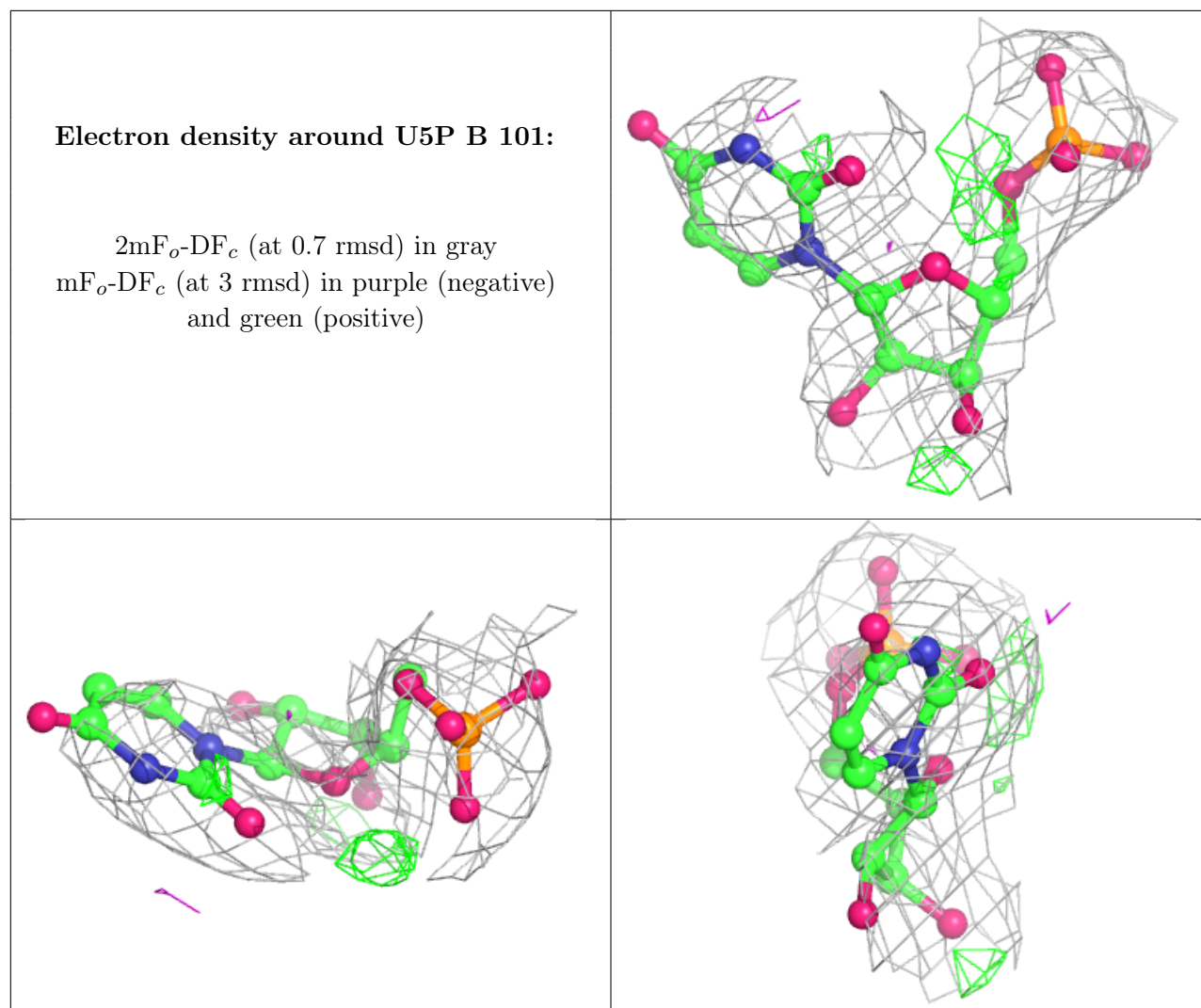
Unable to reproduce the depositors R factor - this section is therefore empty.

### 6.4 Ligands

Unable to reproduce the depositors R factor - this section is therefore empty.

The following is a graphical depiction of the model fit to experimental electron density of all instances of the Ligand of Interest. In addition, ligands with molecular weight > 250 and outliers as shown on the geometry validation Tables will also be included. Each fit is shown from different orientation to approximate a three-dimensional view.





## 6.5 Other polymers [i](#)

Unable to reproduce the depositor's R factor - this section is therefore empty.