

# Bioimage Informatics

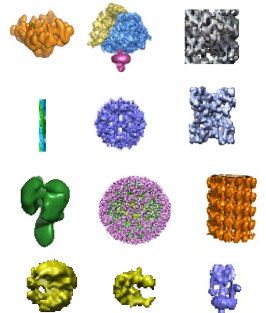
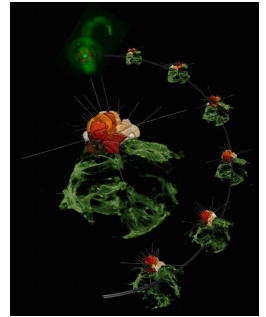
- Informatics in support of biological imaging
- Why?
  - Image data rapidly increasing in several fields
    - (Confocal) Fluorescence microscopy (Cellular B.)
    - EMDB: Electron Microscopy (Structural Biology)
    - High-throughput methods (Genome Biology)
  - Enabling science by making data accessible, reliable, and understandable

**Quality assessment**

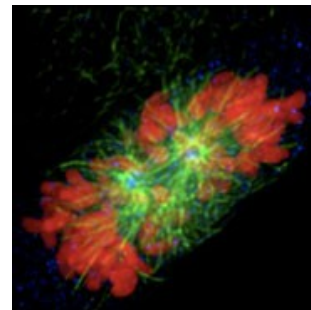
**Public Databases**

**Open Microscopy Environment**

**Standards&Conventions**



EMDB, EBI



J. Swedlow, U. Dundee

# Bioimage informatics

